

SECTION CORNER RECORD

NE 600-400

BOONE COUNTY SURVEYOR'S OFFICE

State Plane grid coordinates NAD83 (2011):

Corner 1: North: 1777577.77 East: 3145401.96 (U.S. survey feet)

Corner 2: North: 1777578.71 East: 3145456.06 (U.S. survey feet)

Type of monument: INDOT type B, plug in monument box

Depth: Flush with adjacent road surface

Indiana tie card references:

IN02_T20NR1E34_80 IN02_T20NR1E35_72

IN02_T19NR1E03_08 IN02_T19NR1E02_00



CORNER WITNESS DETAIL

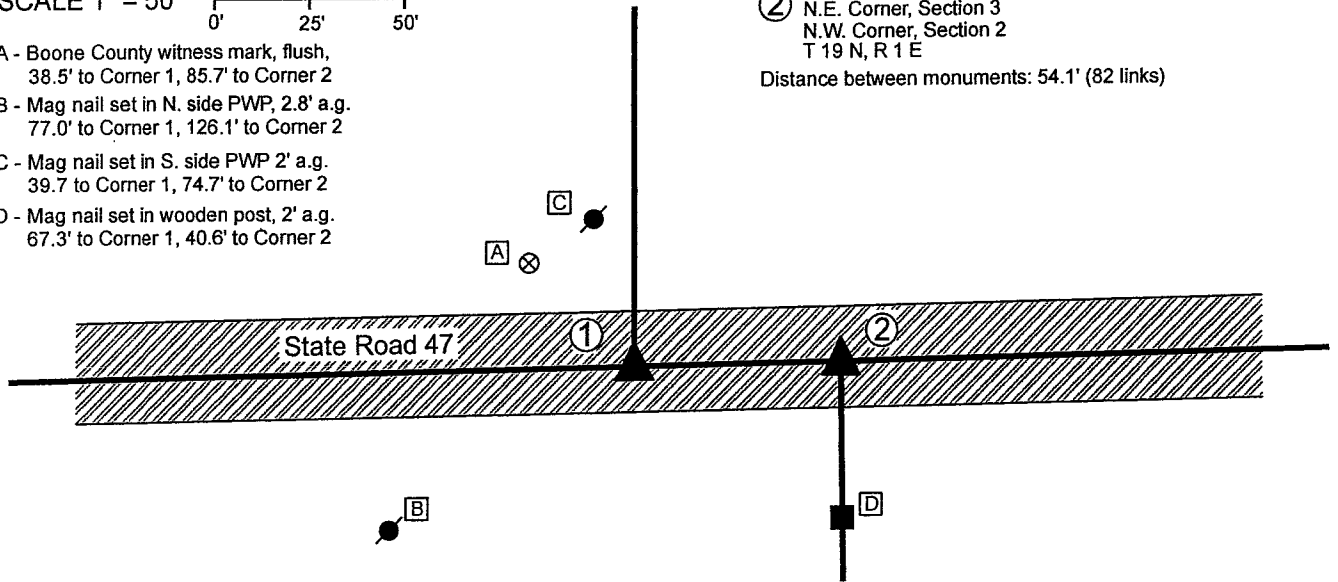
SCALE 1" = 50'

- A - Boone County witness mark, flush, 38.5' to Corner 1, 85.7' to Corner 2
- B - Mag nail set in N. side PWP, 2.8' a.g. 77.0' to Corner 1, 126.1' to Corner 2
- C - Mag nail set in S. side PWP 2' a.g. 39.7' to Corner 1, 74.7' to Corner 2
- D - Mag nail set in wooden post, 2' a.g. 67.3' to Corner 1, 40.6' to Corner 2

① S.E. Corner, Section 34
S.W. Corner, Section 35
T 20 N, R 1 E

② N.E. Corner, Section 3
N.W. Corner, Section 2
T 19 N, R 1 E

Distance between monuments: 54.1' (82 links)



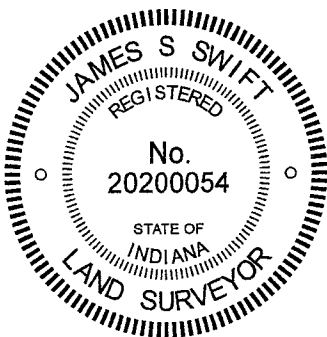
The INDOT Type B monuments were found in place and held as marking the respective corners.

A BCS record of November 6, 1871 states, with respect to Corner 1, "Reestablished from stumps of Elm and rotten roots of Hickory, Set Rock 17.12.12 +."

A BCS record of the same date states, with respect to Corner 2, "Reestablished 82 links East of corner, Sects. 35 & 36, which I found from stumps. Set a Rock 17.11.7 +."

A BCS tie card dated 2004 shows both corners as PK Nails with washers, at 54.12 feet (82 links) apart. Subsequent BCS tie cards, dated June 22, 2005 show both corners as Type "C" Monuments, in the same evident positions as shown on the 2004 tie cards. The monuments found, being INDOT Type B monuments, appear to be the same monuments in the same positions as shown on the 2005 tie cards. It is noted that these monument are located at 54.1 feet apart, matching the original federal closing distance of 82 links, which also matched the 1871 BCS records. No excavation was performed at these corners, as they fall in a state highway. The corners as held by this office in 2004-2006 are held hereon.

Corner 1 was originally established as a wood post in 1819. Corner 2 was originally established as a wood post in 1822.

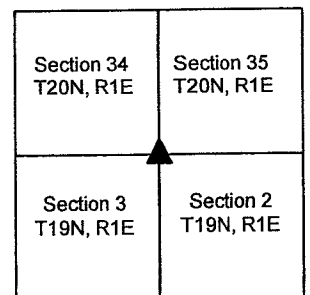


Kenneth E. Hedge, County Surveyor

James S. Swift, IN LS 20200054

February 17, 2021

Clinton Township



SECTION CORNER RECORD

NE 600-450

BOONE COUNTY SURVEYOR'S OFFICE

State Plane grid coordinates NAD83 (2011):

North: 1777624.56 East: 3148049.74 (U.S. survey feet)

North: 1777624.39 East: 3148037.28 (U.S. survey feet)

Type of monument: INDOT type B, plug in monument box

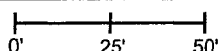
Depth: Flush with adjacent road surface

Indiana tie card references:

IN02_T20NR1E35_76 IN02_T19NR1E02_04

CORNER WITNESS DETAIL

SCALE 1" = 50'

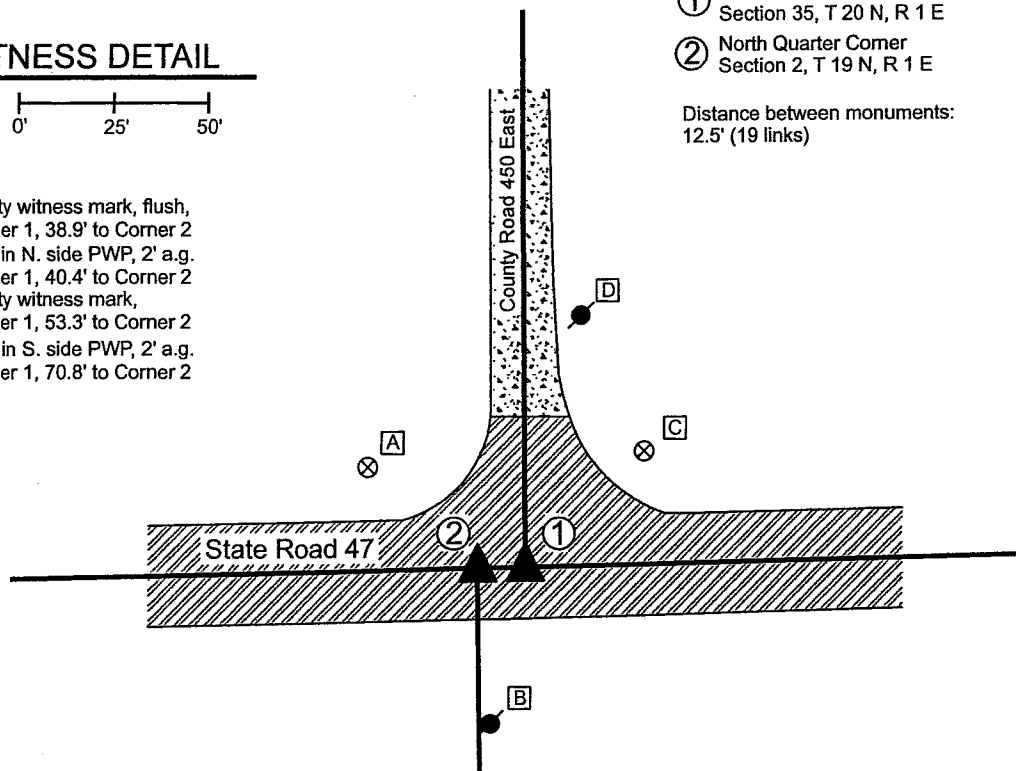


- A - Boone County witness mark, flush, 48.7' to Corner 1, 38.9' to Corner 2
- B - Mag nail set in N. side PWP, 2' a.g. 41.5' to Corner 1, 40.4' to Corner 2
- C - Boone County witness mark, 43.5' to Corner 1, 53.3' to Corner 2
- D - Mag nail set in S. side PWP, 2' a.g. 66.9' to Corner 1, 70.8' to Corner 2

① South Quarter Corner Section 35, T 20 N, R 1 E

② North Quarter Corner Section 2, T 19 N, R 1 E

Distance between monuments: 12.5' (19 links)



The INDOT Type B monuments were found in place and held as marking the respective corners.

A BCS record of November 6, 1871 states, with respect to Corner 1, "Reestablished. Set two rocks. One 8.6.5 +. Top one 10.9.7 +." A BCS record of the

same date states, with respect to Corner 2, "Reestablished 19 links West of qtr sect corner for Sect 35. Set two rocks. One 8.7.6 +. Top one 11.9.5 +"

A BCS tie card dated 2004 shows both corners as PK Nails with washers, at 12.54 feet (19 links) apart. Subsequent BCS tie cards, dated June 22, 2005

show both corners as Type "C" Monuments, in the same evident positions as shown on the 2004 tie cards. The monuments found, being INDOT Type B

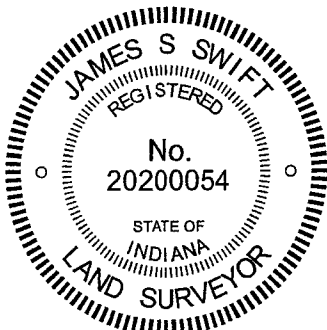
monuments, appear to be the same monuments in the same positions as shown on the 2005 tie cards. It is noted that these monument are located at

12.54 feet apart, matching the average of the original federal closing distance of at the northeast and northwest corners of Section 2, which also matches

the 1871 BCS records. No excavation was performed at these corners, as they fall in a state highway. The corners as held by this office in 2004-2006 are

held hereon.

Corner 1 was originally established as a wood post in 1819. Corner 2 is not an original federal corner.



Kenneth E. Hedge
 Kenneth E. Hedge, County Surveyor

James S. Swift
 James S. Swift, IN LS 20200054

February 17, 2021

Clinton Township

Section 35
T20N, R1E

Section 2
T19N, R1E

SECTION CORNER RECORD

NE 600-500

BOONE COUNTY SURVEYOR'S OFFICE

State Plane grid coordinates NAD83 (2011):

Corner 1: North: 1777674.27 East: 3150689.51 (U.S. survey feet)

Corner 2: North: 1777672.82 East: 3150610.28 (U.S. survey feet)

Type of monument: INDOT Type B, plug in monument box

Depth: Flush with adjacent road surface

① S.E. Corner, Section 35
S.W. Corner, Section 36
T 20 N, R 1 E

② N.E. Corner, Section 2
N.W. Corner, Section 1
T 19 N, R 1 E

Distance between monuments: 79.2'
Original federal offset: 120 links (79.2')

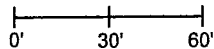
Indiana tie card references:

IN02_T20NR1E35_80 IN02_T20NR1E36_72

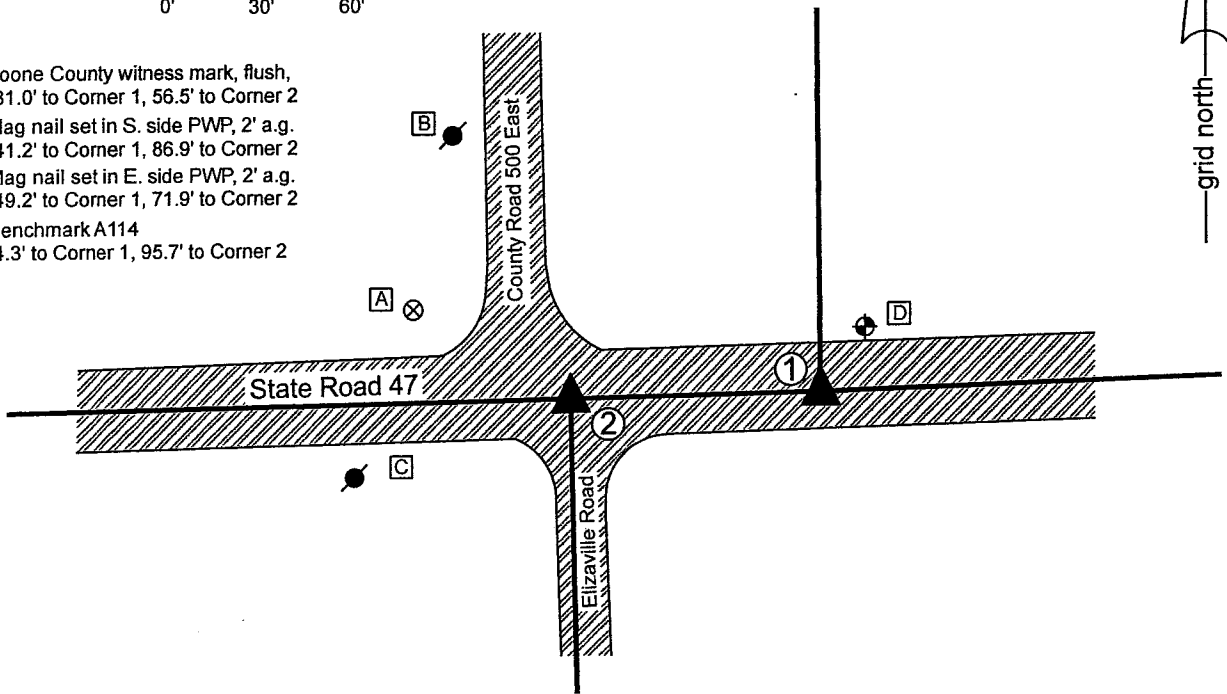
IN02_T19NR1E02_08 IN02_T19NR1E01_00

CORNER WITNESS DETAIL

SCALE 1" = 60'



- A - Boone County witness mark, flush, 131.0' to Corner 1, 56.5' to Corner 2
- B - Mag nail set in S. side PWP, 2' a.g. 141.2' to Corner 1, 86.9' to Corner 2
- C - Mag nail set in E. side PWP, 2' a.g. 149.2' to Corner 1, 71.9' to Corner 2
- D - Benchmark A114 24.3' to Corner 1, 95.7' to Corner 2

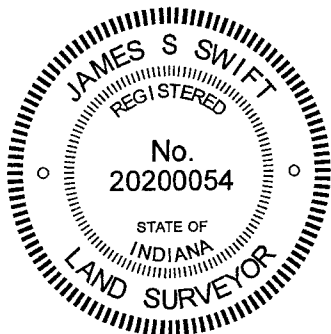


The INDOT Type B monuments were found in place and held as marking the respective corners.

A BCS record of November 6, 1871 states, with respect to Corner 1, "Found point from stump of Oak. Drove no stake." A BCS record of the same date states, with respect to Corner 2, "Reestablished 120 links West of corner, Sects. 35 & 36, set two rocks. One 10.6.6 +. Top one 16.8.8 +"

A BCS tie card dated 2004 shows both corners as PK Nails with washers, at 79.20 feet (120 links) apart. Subsequent BCS tie cards, dated June 22, 2005 show both corners as Type "C" Monuments, in the same evident positions as shown on the 2004 tie cards. The monuments found, being INDOT Type B monuments, appear to be the same monuments in the same positions as shown on the 2005 tie cards. It is noted that these monument are located at 79.2 feet apart, matching the original federal closing distance of 120 links, which also matched the 1871 BCS records. No excavation was performed at these corners, as they fall in a state highway. The corners as held by this office in 2004-2006 are held hereon.

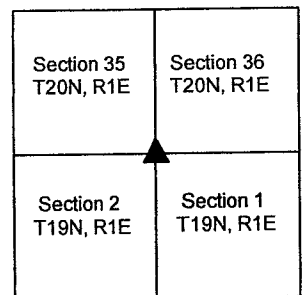
Corner 1 was originally established as a wood post in 1819. Corner 2 was originally established as a wood post in 1822.



Kenneth E. Hedge
Kenneth E. Hedge, County Surveyor

James S. Swift
James S. Swift, IN LS 20200054
February 17, 2021

Clinton Township



SECTION CORNER RECORD

NE 650-400

BOONE COUNTY SURVEYOR'S OFFICE

State Plane grid coordinates NAD83 (2011):

North: 1780209.35 East: 3145398.12 (U.S. survey feet)

Type of monument: Harrison, 4" disk 'Section Corner'

Depth: Five inches above adjacent ground

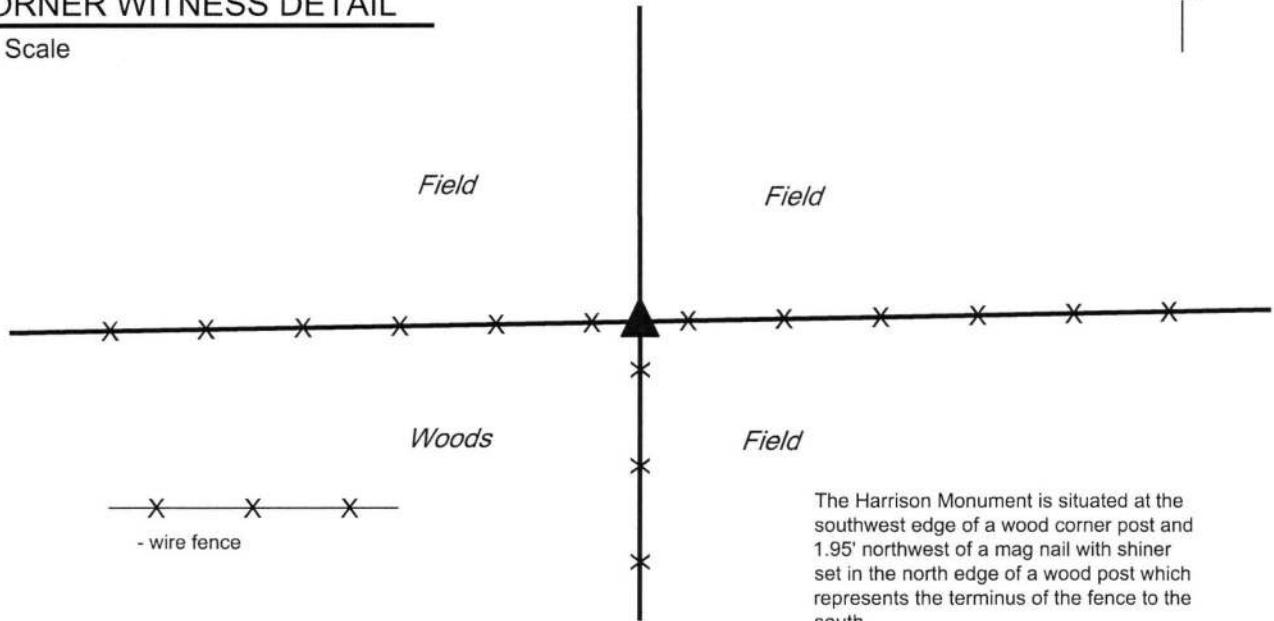
Indiana tie card references:

IN02_T20NR1E34_44 IN02_T20NR1E35_36



CORNER WITNESS DETAIL

No Scale



The Harrison Monument is situated at the southwest edge of a wood corner post and 1.95' northwest of a mag nail with shiner set in the north edge of a wood post which represents the terminus of the fence to the south.

The corner is at the northeast corner of a large wooded plot.

No other distance ties are provided.

The Harrison monument was set in place of a stone found.

A BCS record of November 6, 1871 states, with respect to this corner, "Reestablished from trees. Set Rock 12.7to6.5 +." No recent BCS tie cards were found referencing this corner.

Excavation performed on February 26, 2018 revealed the stone described in the 1871 record found at the southwest edge of the base of a wood corner post. The stone was found approximately 3 inches deep, leaning slightly to the east. The position of the main body of the stone, as found, was held as the specific location of the corner. The stone was removed and replaced with a Harrison monument.

This corner was originally established as a wood post in 1822.

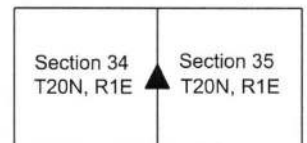



Kenneth E. Hedge, County Surveyor


James S. Swift, IN LS 20200054

March 7, 2018

Clinton Township



SECTION CORNER RECORD

NE 700-400

BOONE COUNTY SURVEYOR'S OFFICE

State Plane grid coordinates NAD83 (2011):

North: 1782844.21 East: 3145397.87 (U.S. survey feet)

Type of monument: 5/8 inch rebar with metal cap 'Boone County Surveyor'

Depth: Flush with adjacent ground

Indiana tie card references:

IN02_T20NR1E27_80 IN02_T20NR1E26_72

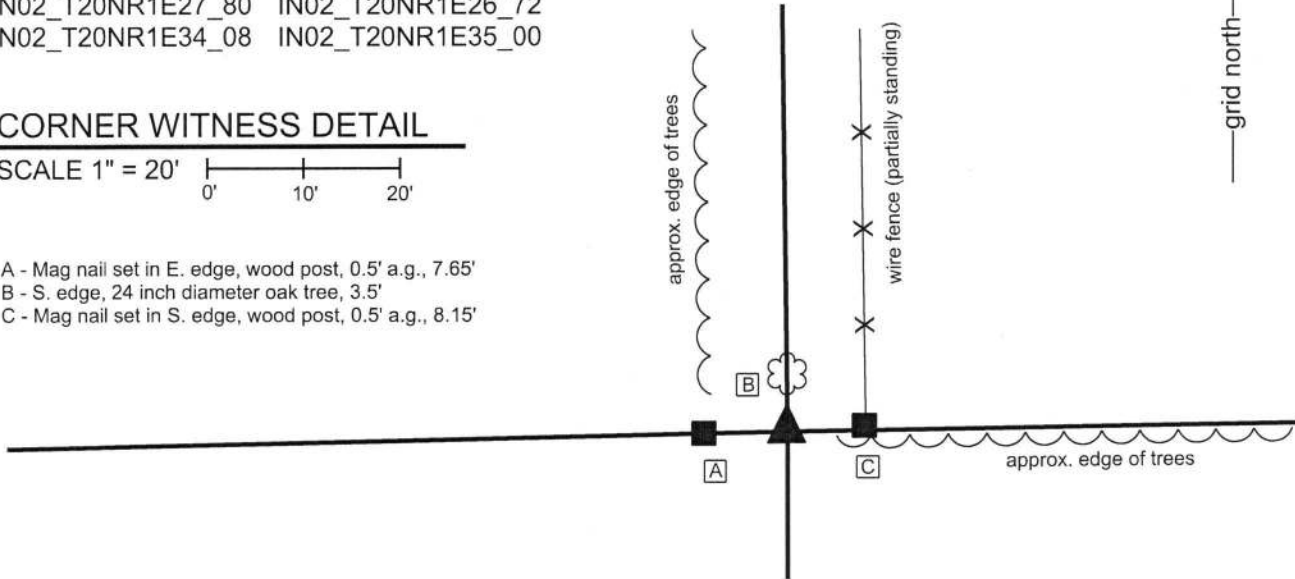
IN02_T20NR1E34_08 IN02_T20NR1E35_00

CORNER WITNESS DETAIL

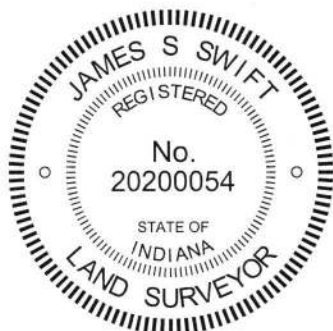
SCALE 1" = 20'



- A - Mag nail set in E. edge, wood post, 0.5' a.g., 7.65'
- B - S. edge, 24 inch diameter oak tree, 3.5'
- C - Mag nail set in S. edge, wood post, 0.5' a.g., 8.15'



The corner is monumented by a 30 inch length of 5/8 inch diameter rebar with a metal cap stamped 'Boone County Surveyor'. The rebar was set at a calculated position, in-line with and equidistant from posts approximately 8 feet east and west of the corner. No specific descriptions of this corner were found in the BCS Surveyor's Record. Neither recent BCS tie cards nor surveys recorded in the Office of the Boone County recorder found which reference the corner. Minor excavation and substantial probing were performed in the immediate vicinity of this corner on several occasions during April, 2018. The existing evidence of the corner is in the form of two posts, 16 feet apart, both of which appear to represent the corners of old fences. The westerly of the two posts was found to have fencing cut-off toward the south and the easterly post is in-line with ancient fencing toward the north. Both posts are in-line with evidence of occupation to the east and west in the form of a field division to the west and the edge of a woods to the east. Detailed investigation of the positions of the posts with respect to remote evidence of proximate corners yields the conclusion that the actual corner is between the two posts. Among the supporting evidence to this conclusion is the observation that a calculated point which represents a double-distance position with respect to the corner approximately 1/2 mile east (see BCS corner NE-700-450) and evidence of the 1/8 corner approximately 1/4 mile of the subject corner, in the form of a found wood corner post with fencing cut-off in all four cardinal directions, would place the theoretical corner approximately 5 feet east of the midpoint between the two posts near the subject corner. A similar computation with respect to the corner approximately 1/2 mile west of the subject corner (see BCS corner NE 700-350) and various evidence of the corner approximately 1/4 mile west of the subject corner, including a found rebar, a post on the east edge of County Road 375 East and ties from a BCS tie card dated June 24, 1975, place the theoretical position for the corner either at the midpoint between the posts or up to 4 feet west thereof. A line extended from the corners 1 mile south and 1/2 mile south, respectively, (see BCS Corners NE 600-400 and NE 650-400) also falls between the posts, slightly west of the midpoint between the posts. Also, testimony from the adjacent property owner, Marcus Wiley, who's family has lived and farmed in this immediate vicinity since 1834, states that family history reports that a north-south lane once ran north from this corner. Given that the posts are almost one rod apart, a one-rod wide lane would explain why the fence end posts are either side of the most likely position for the corner. Minor excavation and probing revealed no further evidence of the corner in the form of a stone or other similar evidence. The preponderance of evidence clearly indicates that the corner falls between the two found end posts and the corner was established at the midpoint between the posts. Due to the presence of a mulberry tree immediately north of the corner (tree cut down, but stump remaining), no Harrison monument was set and the rebar described above was set to mark the corner. This corner was originally established as a wood post in 1822.



Kenneth E. Hedge
 Kenneth E. Hedge, County Surveyor

James S. Swift
 James S. Swift, IN LS 20200054
 January 30, 2019

Clinton Township

Section 27 T20N, R1E	Section 26 T20N, R1E
Section 34 T20N, R1E	Section 35 T20N, R1E

SECTION CORNER RECORD

BOONE COUNTY SURVEYOR'S OFFICE

NE 700-450

State Plane grid coordinates NAD83 (CORS96):

North: 1782886.26 East: 3148007.82 (U.S. survey feet)

Type of monument: Harrison, 4" disk 'Section Corner'

Depth: Six inches below adjacent gravel road surface

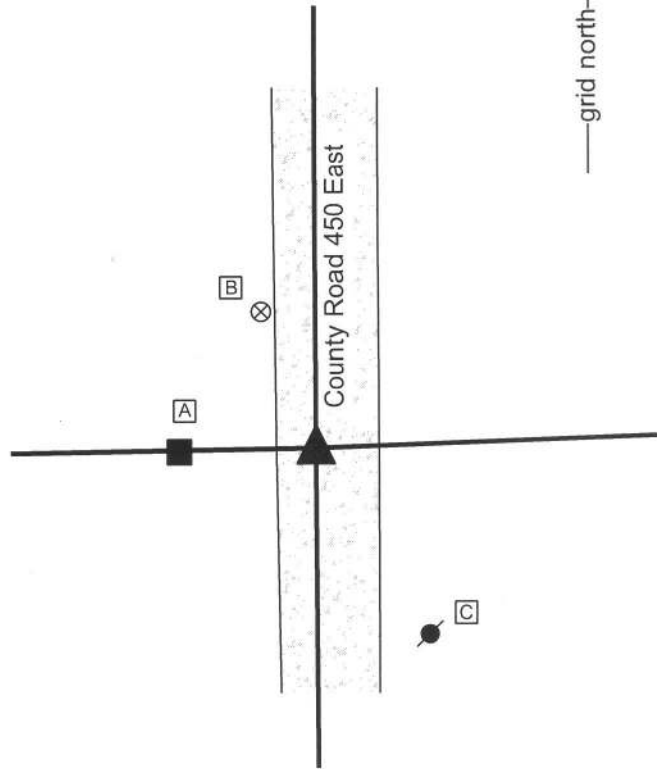
Indiana tie card references:

IN02_T20NR1E26_76

IN02_T20NR1E35_04

CORNER WITNESS DETAIL

SCALE 1" = 30'



- A - Mag nail set in E. side, wood post, 2' a.g., 19.9'
- B - Boone County witness mark, flush, 23.0'
- C - Mag nail set in N. side, power pole, 2' a.g., 32.6'

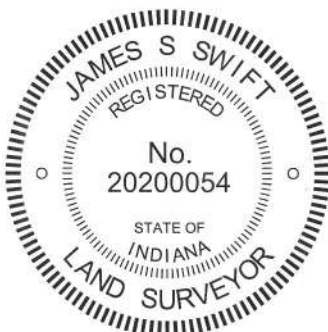
Boone County witness mark is a 3/8" diameter x 2' long rebar bearing a metal cap stamped "Boone County Witness Point."

The harrison monument was set over a stone found.

A BCS record of March 12, 1874 states "Reestablished from the roots of both trees. Set Rock 24.13.13 +." A BCS tie card dated June 3, 1975 states "No stone found - set rod."

This corner was excavated on December 3, 2013. Prior to excavation a 1/2 inch diameter rebar was found disturbed at the surface of the gravel road, approximately 3 feet west of the center of the roadway. Excavation revealed a stone found at 14 inches deep. The top 12 inches of the stone were exposed, at which point the stone measured 13 inches N-S by 11 inches E-W, with the appearance that the stone was yet larger in the E-W dimension towards the base. The stone was embedded in the clay layer below the road, protruding approximately 3 inches into the bottom of the road bed. The stone had a distinct and clearly visible etched "+" mark on the top, sloping north side of the stone. The highest point of the stone was approximately 2 inches south of the mark, but it was not clear whether the stone was undisturbed or had possibly been leaned slightly to the north. The mark appeared to be generally over the center of the mass of the stone. The stone was accepted as being the monument described in the 1874 record. The stone was left in place and a harrison monument was set over the etched "+" mark on the top of the stone. The rebar, removed during excavation, had been 1.5' west of the stone.

This corner was originally established as a wood post in 1822.



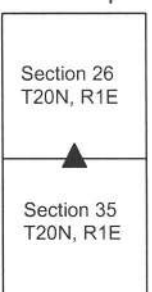
Kenneth E. Hedge

 Kenneth E. Hedge, County Surveyor

James S. Swift

 James S. Swift, IN LS 20200054
 February 5, 2015

Clinton
 Township



PHOTOGRAPHIC DOCUMENTATION
Date of photography: December 3, 2013

View of the stone as first exposed.



View of the stone from the west,
looking east along the adjacent fence.



View of the stone from above and south.



View of the stone from directly above.



For details and documentation, refer to related sheet "Section Corner Record."