

SECTION CORNER RECORD

NW 050-100

BOONE COUNTY SURVEYOR'S OFFICE

State Plane grid coordinates NAD83 (2011):

North: 1748224.54 East: 3119532.94 (U.S. survey feet)

Type of monument: Mag nail in asphalt (N. edge concrete island)

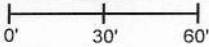
Depth: Flush with surrounding pavement

Indiana tie card references:


IN02_T19NR1W35_44 IN02_T19NR1W36_36

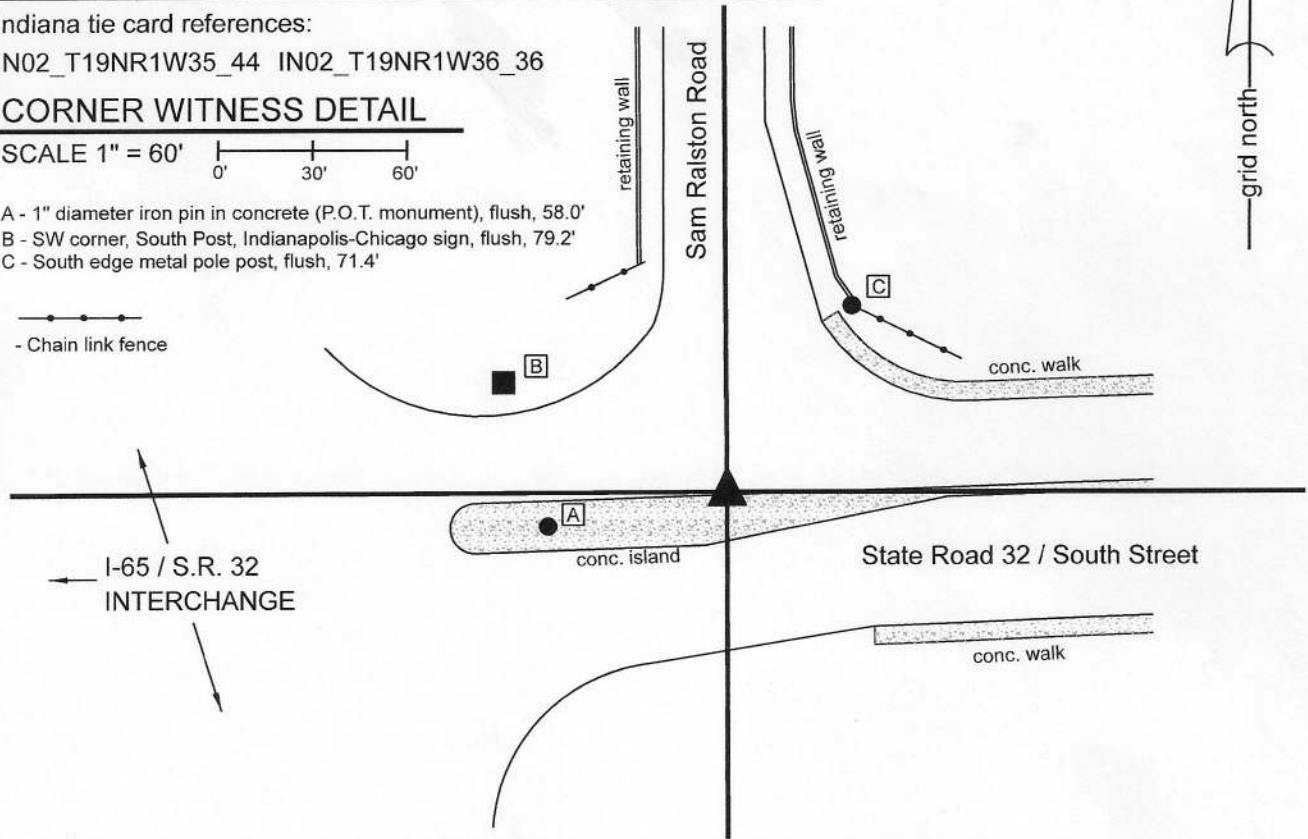
CORNER WITNESS DETAIL

SCALE 1" = 60'



- A - 1" diameter iron pin in concrete (P.O.T. monument), flush, 58.0'
- B - SW corner, South Post, Indianapolis-Chicago sign, flush, 79.2'
- C - South edge metal pole post, flush, 71.4'

 - Chain link fence



The Mag nail was found in place and held as marking the corner. The nail is slated to be replaced with an INDOT section corner monument in upcoming road work, per agreement with the INDOT Crawfordsville District Surveyor.

A BCS record of October 24, 1868 shows the corner as 'Rock.' A BCS te card dated January 19, 1994 shows the corner as a P.K. Nail at the intersection of the centers of State Road 32 and Sam Ralston Road.

Significant road work has taken place at this corner since 1994. The PK Nail found at that time has been destroyed and no Type B or Section Corner type monument is known to have been set to mark the corner. A survey by the Schneider Corporation dated December 6, 1999, recorded as Instrument 00008940 in the Office of the Boone County Recorder shows the corner as a P.K. Nail. A subsequent survey by the same company, dated June 18, 2007, recorded as Instrument 200800001363 shows the corner as a Mag nail. In the intervening time, Road Plans prepared by INDOT, project R-26614, dated October 10, 2003, show the corner as being required to have a section corner monument set. The found Mag nail is believed to be in the same position as is shown on the plans. The found Mag nail is located in-line with Sam Ralston Road to the north, being on the extension of a line connecting the section corner 1/2 mile north (see BCS corner NW 100-100) with an INDOT Type B monument found 288.5 feet north of the nail. The nail is reasonably in-line with the center of State Road 32 as it exists from west of the I-65 interchange to the section corner 1 mile west (see BCS Corner NW-050-200). It is believed that various positions have been attributed to this corner by surveys, due to the lack of substantial monumentation, but the position of the found nail represents the most reliable interpretation of the corner. As noted above, plans currently in process for INDOT call for replacement of the nail with a more substantial monument, per INDOT specifications.




Kenneth E. Hedge, County Surveyor


James S. Swift, IN LS 20200054

May 11, 2020

Center Township

Section 35 T19N, R1W	Section 36 T19N, R1W
-------------------------	-------------------------

SECTION CORNER RECORD

BOONE COUNTY SURVEYOR'S OFFICE

NW 050-200

State Plane grid coordinates NAD83 (2011):

North: 1748199.33 East: 3114216.18 (U.S. survey feet)

Type of monument: plug in monument box, INDOT Type B

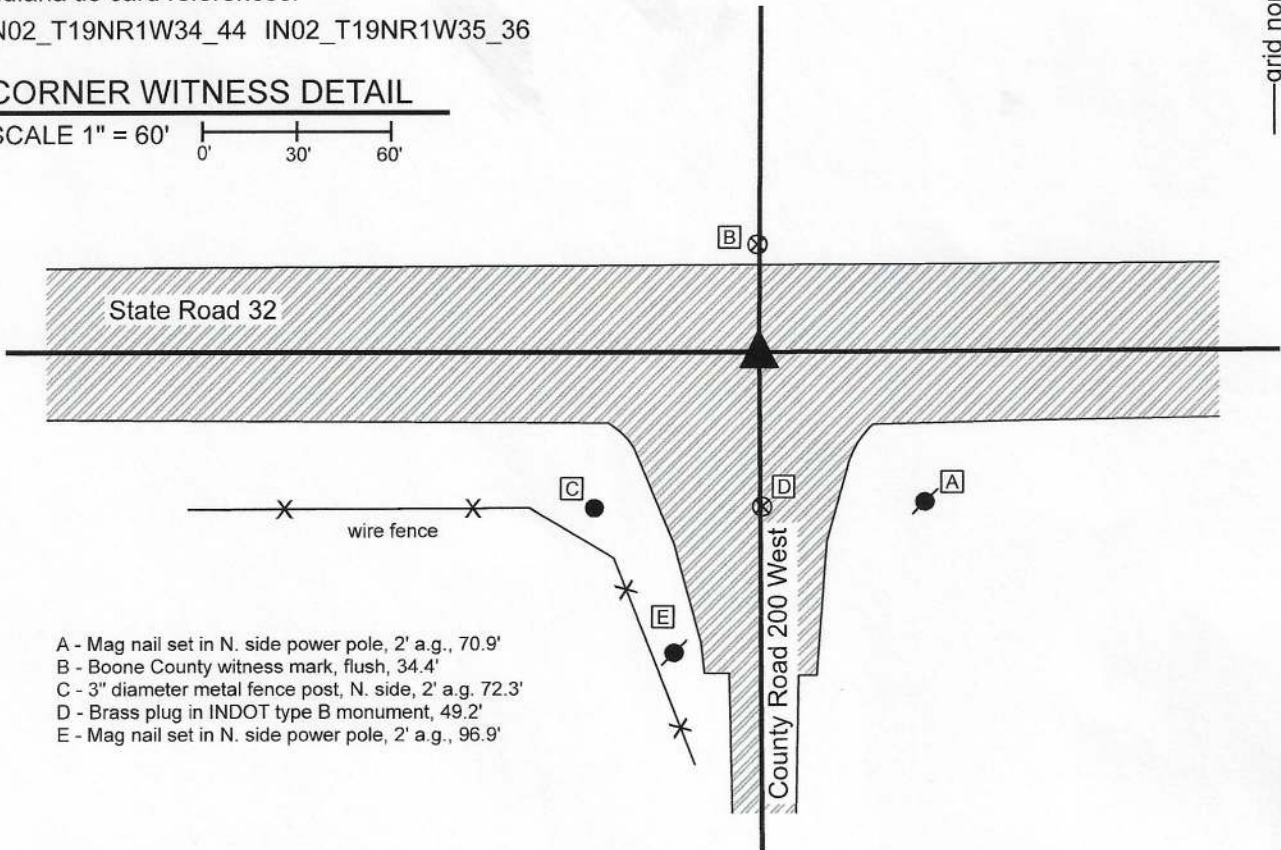
Depth: Flush with adjacent road surface

Indiana tie card references:

IN02_T19NR1W34_44 IN02_T19NR1W35_36

CORNER WITNESS DETAIL

SCALE 1" = 60'



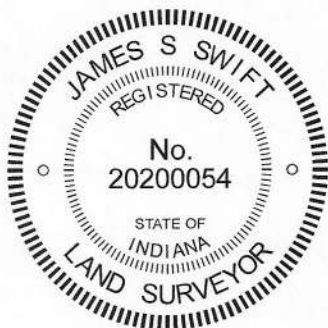
- A - Mag nail set in N. side power pole, 2' a.g., 70.9'
- B - Boone County witness mark, flush, 34.4'
- C - 3" diameter metal fence post, N. side, 2' a.g. 72.3'
- D - Brass plug in INDOT type B monument, 49.2'
- E - Mag nail set in N. side power pole, 2' a.g., 96.9'

The Type B monument was found in place and held as marking the corner.

A BCS record of October 24, 1868 states, with respect to this corner, "Reest. from stump of Ash. SEt Rock 20x16x4 market + on S. side." A BCS data sheet dated February 10, 1990 shows the corner as a railroad rail 3 inches below the blacktop road surface, referencing a stone found in October, 1968. The tie card from October, 1968 was not found. It is believed most likely that the stone was replaced with the railroad rail at that time. A Road Plans supplied by INDOT, dated October 10, 2003, contract R-26614, shows the corner as "Sec. Corner Mon. Req'd."

No large scale excavation was performed at this corner as it falls in a state road. The Type B monument was found in place and is believed to match the position of the corner called in the 2003 route survey. It is most likely that this monument is in the same position as the aforementioned stone and railroad rail, though that fact has not been proven. The monument fits with local evidence of the corner, being at the approximate intersection of the two roads. The Type B monument was held as marking the corner as found.

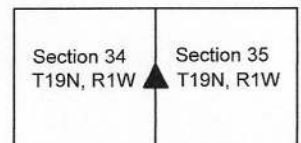
This corner was originally established as a wood post in 1822.



Kenneth E. Hedge
 Kenneth E. Hedge, County Surveyor

James S. Swift
 James S. Swift, IN LS 20200054
 May 11, 2020

Center Township



SECTION CORNER RECORD

NW 100-100

BOONE COUNTY SURVEYOR'S OFFICE

State Plane grid coordinates NAD83 (2011):

North: 1750877.41 East: 3119511.14 (U.S. survey feet)

Type of monument: Harrison, 4" disk 'Section Corner'

Depth: Flush with adjacent road surface

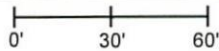
Indiana tie card references:

IN02_T19NR1W25_80 IN02_T19NR1W26_72

IN02_T19NR1W35_08 IN02_T19NR1W36_00

CORNER WITNESS DETAIL

SCALE 1" = 60'



A - Mag nail in E side PWP, 2' a.g., 101.6'

B - Mag nail in S side PWP, 2' a.g., 53.1'

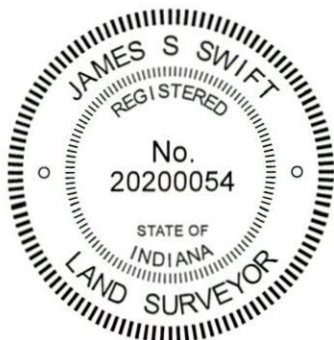
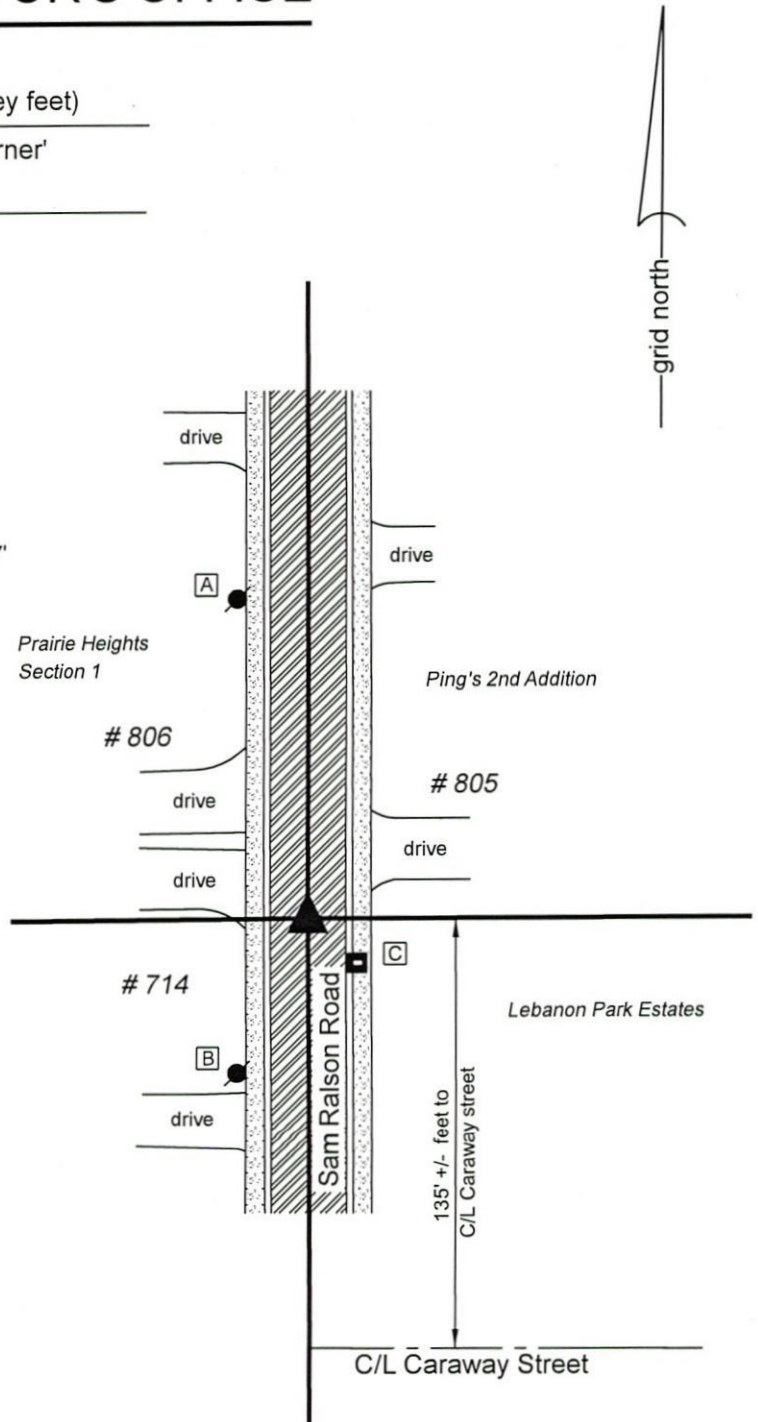
C - Notch in NW edge of post, Mailbox 714 Sam Ralston Rd., 20.7'

The Harrison Monument was found in place. A BCS record dated June 27, 1872 states, with respect to this corner, "Set Reest'd from trees. Oak lately cut down. Is 18 links to Elm. Set rock 31x13x8 +." A BCS tie card dated January 18, 1994 shows the corner as a railroad rail with rebar.

No excavation was performed at this corner. A Harrison monument was found. It is believed that this monument is situated over or in place of the railroad rail referenced in the 1994 tie card. Both the Harrison monument and railroad rail were most likely set in cooperation with the Boone County Surveyor's Office but documentation for that was not found. The Harrison monument has been in place since at least 2006. It is believed that the position of the Harrison monument or railroad rail has been held for numerous surveys for many years and that the adjoining subdivisions and properties are tied to this corner position. (See Prairie Heights, Section 1, Ping's 2nd Addition and various plats for Lebanon Park Estates) The position of the monument works well with local evidence in the form of the center of the road and works well with the relative positions of the corners approximately 1/2 and 1 mile west, respectively (see Boone County Corners NW 100-150 and NW 100-200.)

The Harrison monument was held as marking the corner and was left in place, undisturbed.

This corner was originally established as a wood post in 1822.



Kenneth E. Hedge
Kenneth E. Hedge, County Surveyor

James S. Swift
James S. Swift, IN LS 20200054
February 5, 2020

Center Township

Section 26 T19N, R1W	Section 25 T19N, R1W
Section 35 T19N, R1W	Section 36 T19N, R1W

SECTION CORNER RECORD

NW 100-150

BOONE COUNTY SURVEYOR'S OFFICE

State Plane grid coordinates NAD83 (2011):

North: 1750855.90 East: 3116868.82 (U.S. survey feet)

Type of monument: Harrison, 4" disk 'Section Corner'

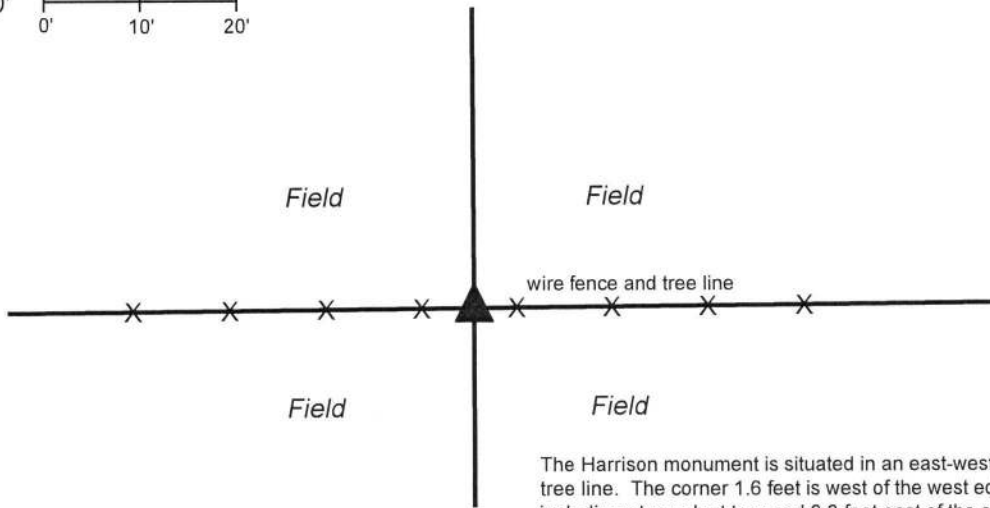
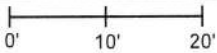
Depth: Four inches above adjacent ground.

Indiana tie card references:

IN02_T19NR1W26_04 IN02_T19NR1W35_76

CORNER WITNESS DETAIL

SCALE 1" = 20'



The Harrison monument is situated in an east-west fence and tree line. The corner 1.6 feet is west of the west edge of a 19 inch diameter walnut tree and 9.3 feet east of the east edge of a 19 inch diameter walnut tree. The monument is witnessed by an orange fiberglass lathe labeled 'survey marker'. No other distance ties are provided.

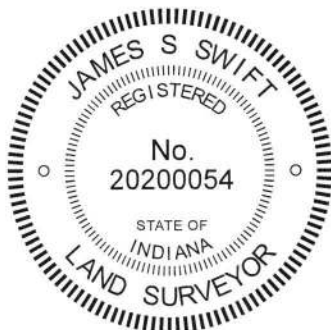
The Harrison monument was set in place of a wood corner post found.

A BCS record dated June 27, 1872 states, with respect to this corner, "Set Stake." No calls for stones were found in the BCS Surveyor's Record. No recent tie cards were found referencing the corner nor were any recorded surveys found which call out a specific location for the corner.


This corner was excavated on November 20, 2018. Prior to excavation, two wood posts, both with evidence of bracing wires, were found in an E-W fence. Both posts appeared to be ancient. Excavation in the vicinity of both posts revealed no further evidence of the corners. Analysis of the positions of the post with respect to remote evidence of other corners indicates that the easterly post is the corner. This post was found to be approximately 1.2 feet east of a theoretical midpoint between the section corners approximately 1/2 mile to the east and west (see BCS corners NW 100-100 and NW 100-200, respectively). Also, it was observed that the post is almost precisely at double the distance east from posts providing evidence of the 1/8 corner approximately 1/4 mile west (post with standing fence east and west and cut toward the north) and a post providing evidence of the 1/16 corner approximately 1/8 mile west of the subject corner (post with fence east, west and south).

The easterly of the two found posts was held as marking the corner. The post was removed and replaced with a Harrison monument in the same position.

This corner was originally established as a wood post in 1822.




Kenneth E. Hedge, County Surveyor


James S. Swift, IN LS 20200054
January 23, 2019

Center
Township

Section 26
T19N, R1W

Section 35
T19N, R1W

SECTION CORNER RECORD

NW 100-200

BOONE COUNTY SURVEYOR'S OFFICE

State Plane grid coordinates NAD83 (2011):

North: 1750834.15 East: 3114224.09 (U.S. survey feet)

Type of monument: 5/8" rebar with metal cap stamped 'Boone County Surveyor'

Depth: 14 inches below adjacent ground

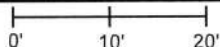
Indiana tie card references:

IN02_T19NR1W27_80 IN02_T19NR1W26_72

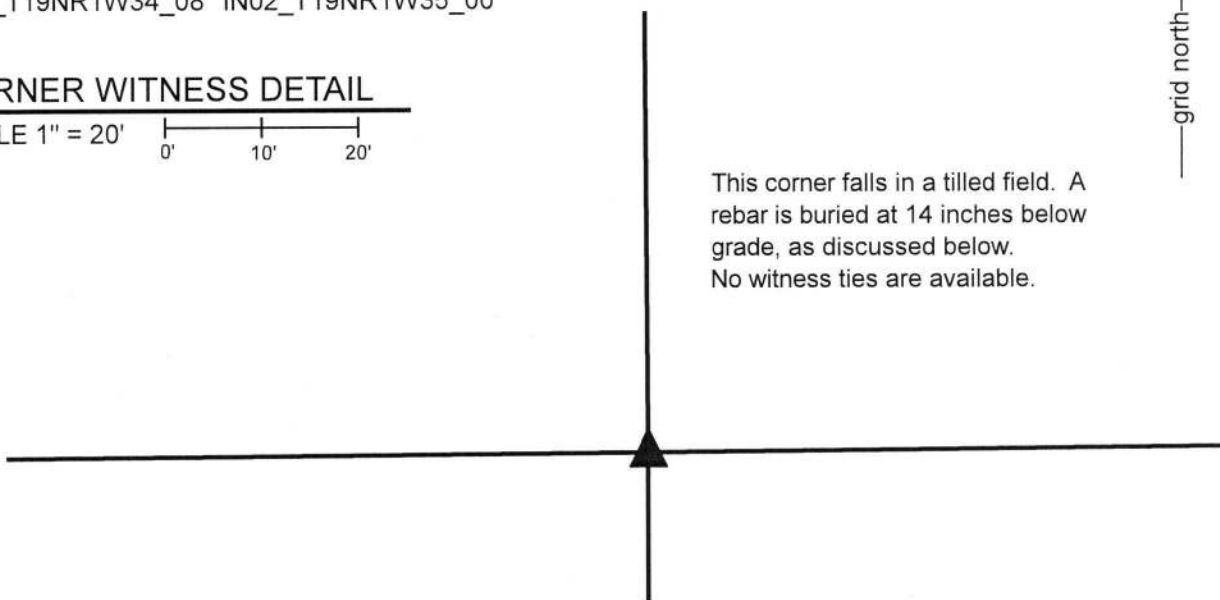
IN02_T19NR1W34_08 IN02_T19NR1W35_00

CORNER WITNESS DETAIL

SCALE 1" = 20'



This corner falls in a tilled field. A rebar is buried at 14 inches below grade, as discussed below. No witness ties are available.



This corner is monumented by a 30 inch length of 5/8 inch rebar, set vertically and buried 14 inches below grade. The rebar has a metal cap stamped 'Boone County Surveyor' affixed to the top. A Harrison monument which was set at this corner in 2017 was destroyed during a fence removal project in the Spring of 2019. The rebar was set on September 25, 2019 in the same horizontal position as Harrison monument occupied previously.

The following narrative is verbatim per the original version of this document, dated January 10, 2018:

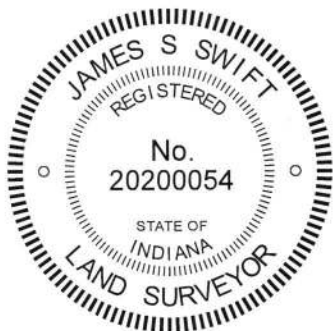
The Harrison monument was set in the position of an ancient wood corner post.

A BCS record of October 4, 1884 states, with respect to this corner, "Reestablished from stumps of both trees. Set Rock 29-16-9." A BCS record of March 11, 1895 states "see C Section 34, marked + the rock." The latter entry refers to the former.

No recent BCS tie cards were found referencing the corner.

This corner was excavated on November 9, 2017. The approximate position of the corner was computed with respect to the relative positions of evidence of the corners 1/2 and 1/4 mile west, respectively. An established east-west occupation line is visible in the form of an ancient fence which is generally not standing, being almost entirely on the ground, and the associated mound of dirt along the fence. Within a few feet of the computed position of the corner, an ancient wood corner post was found lying on the ground with various fencing attached. Substantial manual excavation around the post revealed several rocks and bricks, none of which were found to match the dimensions of the rock called for in the 1884 record. The position of the post was readily evident from its position on the ground, but fragments of the base of the post were minimal, as it appears that the post was of a type of wood prone to rotting underground. However, fragments of wire were found below the ground and the exact position of the corner was established at the point where fragments of underground wire were found extending in all four cardinal directions. A Harrison monument was set at this position.

This corner was originally established as a wood post in 1822.



Kenneth E. Hedge
Kenneth E. Hedge, County Surveyor

James S. Swift
James S. Swift, IN LS 20200054

January 10, 2018, updated December 3, 2019

Center Township

Section 27 T19N, R1W	Section 26 T19N, R1W
Section 34 T19N, R1W	Section 35 T19N, R1W

A 2x2 grid of sections. A small black triangle is placed at the intersection of Section 26 and Section 34, pointing upwards.