

SECTION CORNER RECORD

NW 600-200

BOONE COUNTY SURVEYOR'S OFFICE

State Plane grid coordinates NAD83 (2011):

Corner 1: North: 1777276.10 East: 3114207.33 (U.S. survey feet)

Corner 2: North: 1777276.21 East: 3114184.82 (U.S. survey feet)

Type of monument: INDOT Type B, plug in monument box

Depth: Flush with adjacent road surface

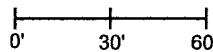
Indiana tie card references:

IN02_T20NR1W34_80 IN02_T19NR1W35_72

IN02_T19NR1W04_08 IN02_T19NR1W03_00

CORNER WITNESS DETAIL

SCALE 1" = 60'

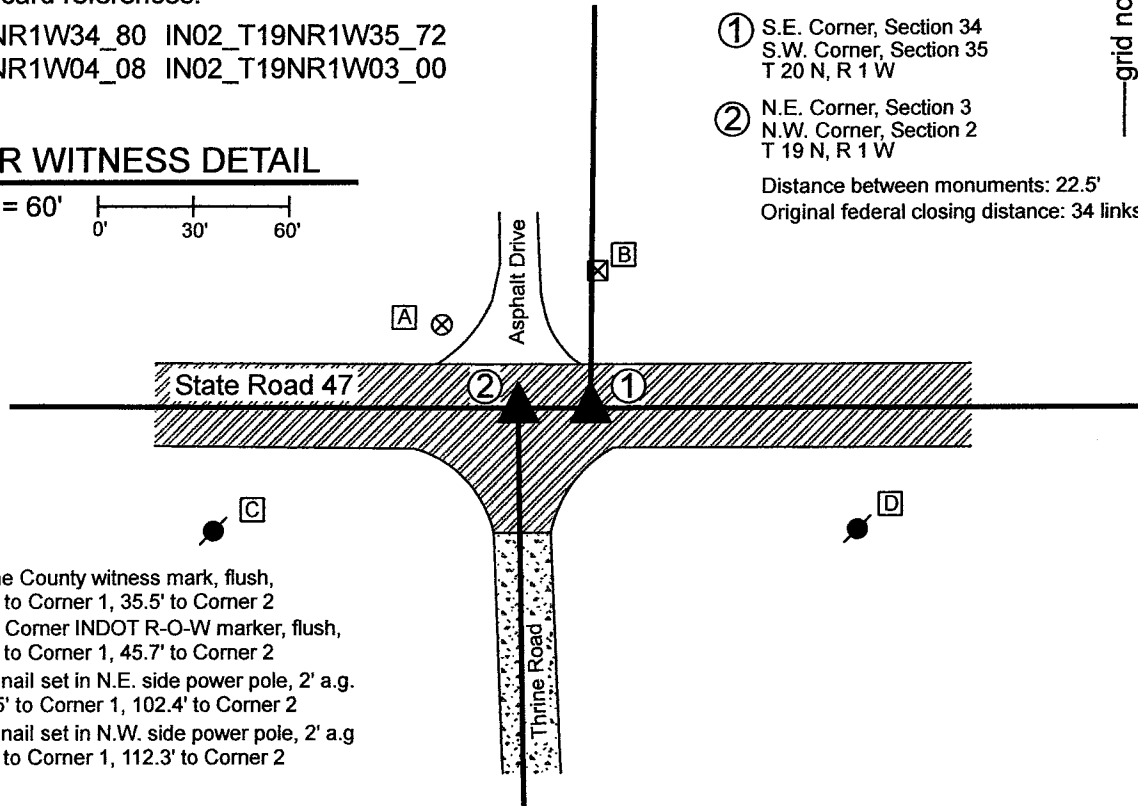


① S.E. Corner, Section 34
S.W. Corner, Section 35
T 20 N, R 1 W

② N.E. Corner, Section 3
N.W. Corner, Section 2
T 19 N, R 1 W

Distance between monuments: 22.5'

Original federal closing distance: 34 links (22.4')



- A - Boone County witness mark, flush, 53.4' to Corner 1, 35.5' to Corner 2
- B - S.W. Corner INDOT R-O-W marker, flush, 40.1' to Corner 1, 45.7' to Corner 2
- C - Mag nail set in N.E. side power pole, 2' a.g. 123.5' to Corner 1, 102.4' to Corner 2
- D - Mag nail set in N.W. side power pole, 2' a.g. 91.4' to Corner 1, 112.3' to Corner 2

The INDOT Type B monuments were found in place and held as marking the respective corners.

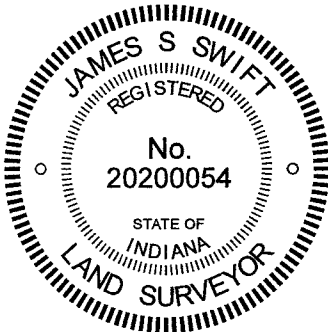
A BCS record of February 21, 1920 states, with respect to Corner 1, "Set rock, 14x8x8." No specific descriptions of Corner 2 were found in the BCS Surveyor's Record beyond the establishment of the corner as a wood post in 1829.

A BCS tie card dated June 22, 2005 shows both corners as P.K. Nails. No BCS tie card was found showing the found Type B monuments, though the respective positions of the two monuments agree substantially with the positions shown on the 2005 tie card. It is believed that the current monuments were set in the same, or nearly the same, positions as held on this 2005 tie card. A Surveyor's Report prepared for INDOT by TBird Design Services, recorded as Instrument 200700000086 in the Office of the Boone County Recorder shows both corners as INDOT Type B monuments and states that the monuments were set in place of Mag Nails after the resurfacing of S.R. 47 per INDOT plas RS-28322 (SR 47). The positions of the found monuments agree with those shown on this report. Please refer to page 30 of 33 of said Instrument 200700000086.

The position of Corner 2 agrees with local evidence in the form of being at the intersection of the east-west state road and the county road to the south. The position of Corner 1 is not supported by local evidence, but agrees with the relative position of Corner 2 with respect to the original federal closing distance of 34 links.

Corner 1 was originally established as a wood post in 1819. Corner 2 was originally established as a wood post in 1829.

Washington Township



Kenneth E. Hedge
 Kenneth E. Hedge, County Surveyor

James S. Swift
 James S. Swift, IN LS 20200054

January 12, 2021

Section 34 T20N, R1W	Section 35 T20N, R1W
Section 3 T19N, R1W	Section 2 T19N, R1W

SECTION CORNER RECORD

NW 600-250

BOONE COUNTY SURVEYOR'S OFFICE

① South Quarter Corner
Section 34, T 20 N, R 1 W

② North Quarter Corner
Section 3, T 19 N, R 1 W

Distance between
monuments: 3.55'



State Plane grid coordinates NAD83 (2011):
Corner 1: North: 1777287.46 East: 3111575.49
Corner 2: North: 1777287.45 East: 3111579.04

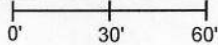
Corner 1: Mag nail set flush with adjacent road surface
Corner 2: Mag nail set flush with adjacent road surface

Indiana tie card references:

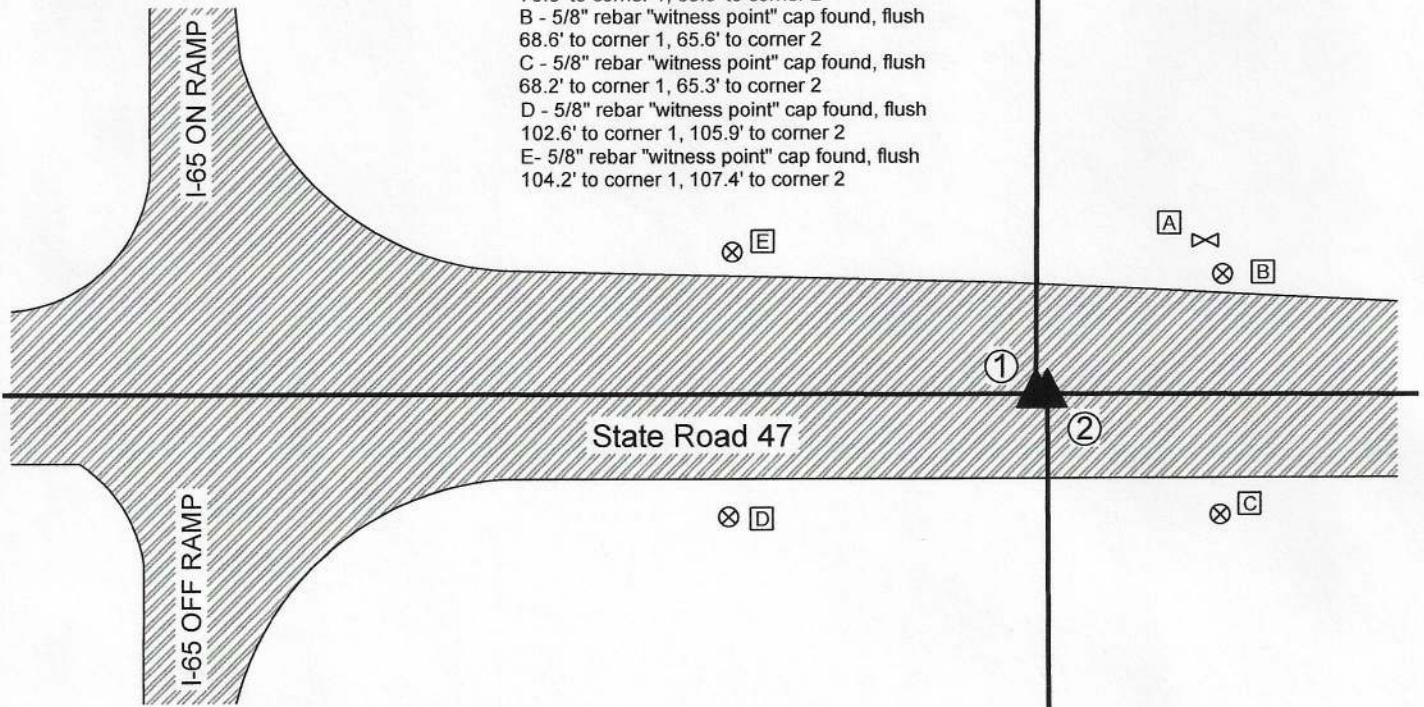
IN02_T20NR1W34_76 IN02_T19NR1W03_04

CORNER WITNESS DETAIL

SCALE 1" = 60'



- A - S.W. corner, S. post "Indianapolis-Chicago" sign, 70.6' to corner 1, 68.0' to corner 2
- B - 5/8" rebar "witness point" cap found, flush 68.6' to corner 1, 65.6' to corner 2
- C - 5/8" rebar "witness point" cap found, flush 68.2' to corner 1, 65.3' to corner 2
- D - 5/8" rebar "witness point" cap found, flush 102.6' to corner 1, 105.9' to corner 2
- E - 5/8" rebar "witness point" cap found, flush 104.2' to corner 1, 107.4' to corner 2



The Mag nails at both corners were set with respect to information shown on a BCS tie card dated June 22, 2005. This document shows both corners as "X" marks in concrete on the approach to the overpass of Interstate 65. The corners are tied to four witness rebars. All four rebars were found and the positions of the corners were established per the distance ties shown on the tie card with uncertainties of less than 0.1 foot.

Corner 1 is an original federal corner set in 1819. This corner is shown on a BCS record dated August 30, 1921 which states "Set Rock 12x8x6 marked +. Witness Rock 24x16x6 North 34 3/4° East, 33 1/2 [links]." Corner 2 is not an original federal corner but is referenced in a BCS record of January 31, 1850.

Corner 1 is shown as "approximate 1/4 corner" on the plans for the overpass of SR47 over I-65, F.Y. 1969, project no. I-65-5(35) 140 Sheet No. 25.

Corner 1 is shown as "cross cut found" on a survey recorded as Instrument 9711589, Boone County Recorder.

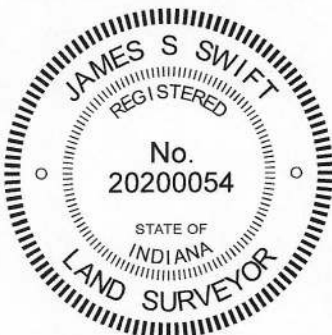
No excavation was performed as these corners fall in a state road and are clearly in an area of significant fill. The X in concrete marks were not found as the overpass has been resurfaced since 2005. The township line offset of 3.55 feet represents the average of the offsets recorded in the original federal field notes for the northeast and northwest corners of Section 3.

Mag nails with washers stamped 'Boone County Surveyor' were set at both positions. This document will be presented to INDOT to request the establishment of a more durable monument during the next resurfacing project on S.R. 47.

Washington
Township

Section 34
T20N, R1W

Section 3
T19N, R1W



Kenneth E. Hedge
Kenneth E. Hedge, County Surveyor

James S. Swift
James S. Swift, IN LS 20200054

September 9, 2020

SECTION CORNER RECORD

NW 600-300

BOONE COUNTY SURVEYOR'S OFFICE

State Plane grid coordinates NAD83 (2011):

Corner 1: North: 1777290.16 East: 3108929.71 (U.S. survey feet)

Corner 2: North: 1777290.13 East: 3108959.41 (U.S. survey feet)

Corner 1: INDOT Type B monument, flush

Corner 2: Mag nail with 'Boone County Surveyor' washer, flush

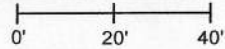
Indiana tie card references:

IN02_T20NR1W33_80 IN02_T20NR1W34_72

IN02_T19NR1W04_08 IN02_T19NR1W03_00

CORNER WITNESS DETAIL

SCALE 1" = 40'



A - Boone County witness mark, flush,

43.6' to corner 1, 22.0' to corner 2

B - Mag nail set in S. side power pole, 2' a.g.,

69.0' to corner 1, 47.7' to corner 2

C - Mag nail set in N. side power pole, 2' a.g.,

124.3 to corner 1, 96.4' to corner 2

D - S.W. corner top of right-of-way marker,

50.7' to corner 1, 40.3' to corner 2

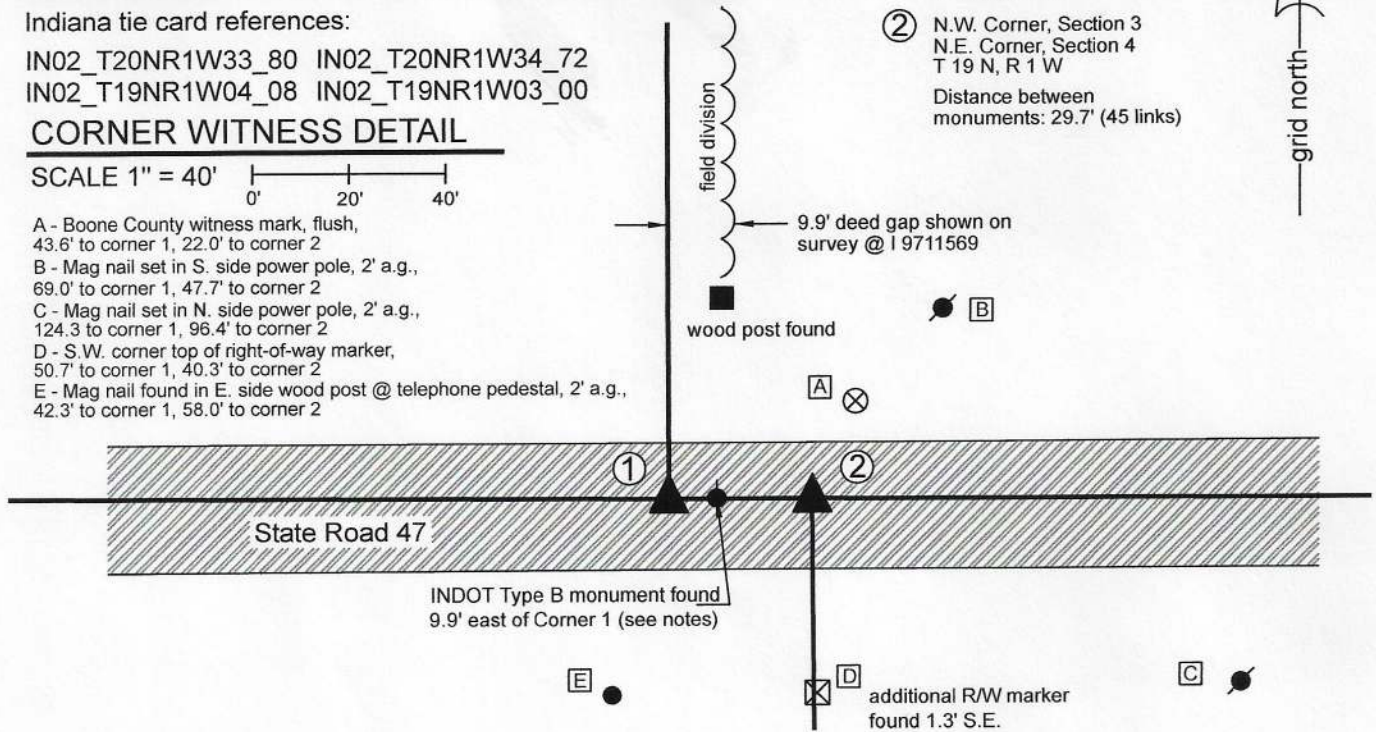
E - Mag nail found in E. side wood post @ telephone pedestal, 2' a.g.,

42.3' to corner 1, 58.0' to corner 2

① S.W. Corner, Section 34
S.E. Corner, Section 33
T 20 N, R 1 W

② N.W. Corner, Section 3
N.E. Corner, Section 4
T 19 N, R 1 W

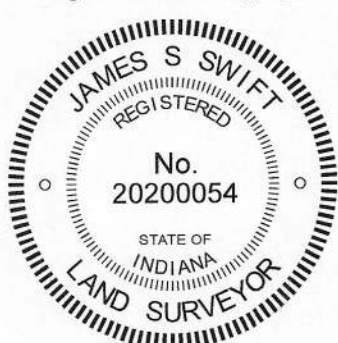
Distance between
monuments: 29.7' (45 links)



The INDOT Type B Monument at Corner 1 was found and held as marking the corner. This position agrees with the position of a P.K. Nail shown as marking the corner on a BCS tie card dated June 22, 2005. Another INDOT Type B Monument was found at 9.9 feet east of the monument marking Corner 1. This monument does not represent the position of Corner 2. A surveyor's report produced for INDOT and recorded as Instrument 200700000086 in the Office of the Boone County Recorder shows, on page 26 of 33, that the easterly of the Type B monuments represents the northeast corner of section 4, T19N, R1W. This is not correct and is not in agreement with the 2005 BCS tie card, INDOT plans for the I-65 / S.R. 47 interchange or original federal field notes.

Both corners are original federal corners. Corner 1 was set in 1819 and Corner 2 was set in 1829, 45 links (29.7 feet) east of Corner 1. A BCS record dated October 21, 1862 states, with respect to Corner 1, "Reestablished from the corner of sects 3 & 4, T19. Trees both gone. Set two rocks. Under one 7x5x3. Top 9x8x7." A BCS record dated October 22, 1862 states, with respect to Corner 2, "Found stone at Corner." Both corners are shown on a BCS tie card dated June 22, 2005 with a separation of 29.70 feet, equal to the original offset of 45 links reported in the 1829 federal notes. A survey recorded as Instrument 9711589 in the Office of the Boone County Recorder shows a P.K. Nail found at Corner 1 and demonstrates a 9.90 foot deed gap east of the section line to the north of Corner 1. It is most likely that the additional INDOT Type B monument, shown as marking Corner 2 on the report recorded as Instrument 200700000086, was set in place of a monument which marked the easterly edge of the 9.90 foot deed gap. This monument does not mark Corner 2. Neither corner is specifically shown on the plans for the S.R. 47, Interstate 65 interchange (F.Y. 1969, project no. I-65-5(35) 140. Sheet No. 25), though the plans show station information for the section lines to the north and south of the road. This information indicates a separation of approximately 22.5 feet. Two INDOT right-of-way markers were found on the south side of S.R. 47, one of which is approximately 1 foot east of the section line defined by Corner 2, the other being 1.3 feet southeasterly of the first. Uncertainties with respect to the position of Corner 2 and the south quarter corner of section 34, as shown on the aforementioned plans, is approximately 4 feet east-west.

The Type B monument at Corner 1 was held as found. Corner 2 was established at 29.70 feet east thereof on the township line as defined by Corner 1 and the south quarter corner of section 34 (see BCS Corner NW 600-250). A Mag nail was set at this position of September 8, 2020. The Type B monument 9.9 feet east of Corner 1 is noted but is not considered as marking either corner. This document will be presented to INDOT to request establishment of a more durable monument at Corner 2 during the next resurfacing project on S.R. 47.



Kenneth E. Hedge
Kenneth E. Hedge, County Surveyor

James S. Swift
James S. Swift, IN LS 20200054

September 9, 2020

Washington Township

Section 33 T20N, R1W	Section 34 T20N, R1W
Section 4 T19N, R1W	Section 3 T19N, R1W

SECTION CORNER RECORD

NW 650-300

BOONE COUNTY SURVEYOR'S OFFICE

State Plane grid coordinates NAD83 (2011):

North: 1779935.88 East: 3108922.39 (U.S. survey feet)

Type of monument: Harrison, 4" disk 'Section Corner'

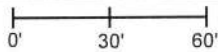
Depth: 5 inches above adjacent ground

Indiana tie card references:

IN02_T20NR1W33_36 IN02_T20NR1W34_44

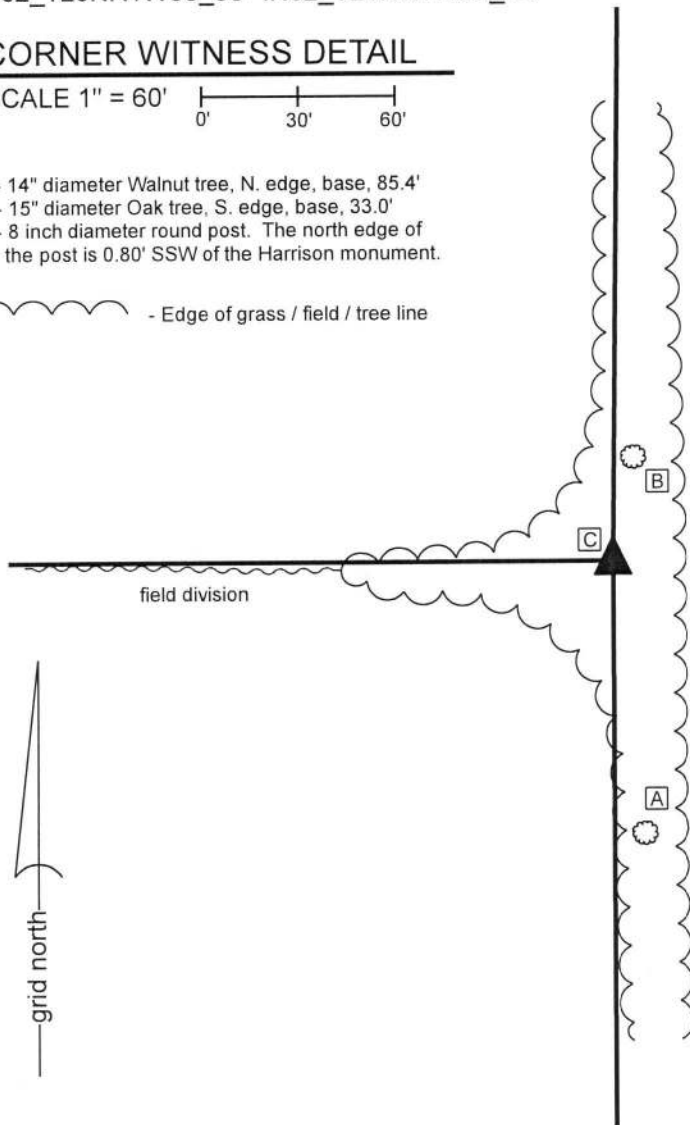
CORNER WITNESS DETAIL

SCALE 1" = 60'



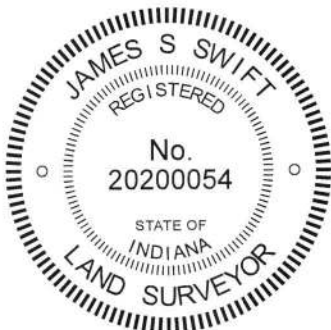
- A - 14" diameter Walnut tree, N. edge, base, 85.4'
- B - 15" diameter Oak tree, S. edge, base, 33.0'
- C - 8 inch diameter round post. The north edge of the post is 0.80' SSW of the Harrison monument.

- Edge of grass / field / tree line



The Harrison monument was set in place of a stone found. A BCS record of February 21, 1920 states, with respect to this corner, "Found rock in place." No recent BCS tie cards were found referencing the corner. A survey by Colin Nicholas Starr, LS #S0159, recorded as Instrument 9711589 in the Office of the Boone County Recorder shows the corner as a CRS (capped rebar set) 9.90 feet west of 'old wooden post found.' The Starr survey clearly shows a 9.9 foot gap between the adjoining land to the southeast and the section line. A 5/8 inch rebar matching the position shown on the Starr survey was found in a substantially disturbed condition at the southeast corner of an 8 inch diameter round corner post. The post does not appear to be ancient but does appear to pre-date the Starr survey. It appears Starr set a rebar at the southeast edge of the post and called the rebar the corner. The post has a notch to the north, indicating a former brace in that direction, and has evidence of fencing cut-off toward the north, east and west. The post approximately in-line with a field division to the west, approximately 10 feet west of a tree line to the south, and slightly west of a tree line to the north. The Starr survey shows fence along the line north from the corner. This fencing was not found present in 2019, but, as noted, the found post had fencing cut-off toward the north. An ancient post found at 660 feet north of the corner has fencing cut-off toward the north and south and standing fencing to the east. This post was found to fall approximately 1 foot west of a straight line between the corner to the north (see BCS corner NW 700-300) and the found post. Hence, the general position of the corner as shown on the Starr survey fits with the evidence to the north and also fits with the evidence to the south, taking into account the 9.90 foot gap. Excavation around the post on March 27, 2019 revealed a stone which bore the distinct characteristics of a stone set purposely to mark the corner. The stone was found north of, but not touching, the post. The stone is triangular in shape, measuring 18 inches tall by 13 inches N-S by 13 inches E-W. One point of the triangle was oriented toward the north and the other points oriented east-west. It was vertical, as found, with a distinct top of approximately 4 inches by 4 inches. The stone was found slightly below ground level. No specific etched marks were found on the stone, nor were any noted in the 1920 record. The stone did not appear to be acting as a brace rock for the post and did appear to have been purposely set, oriented vertically and in cardinal directions. The stone was accepted as the best available evidence of the corner and was held as marking the corner. The stone was removed and replaced with a Harrison monument in the position of the center of the 4 inch by 4 inch top. The Harrison monument is 0.80 foot NNE of the north edge of the post. The rebar, removed during excavation, had been 1.6 feet south and 0.7 foot east of the Harrison monument.

This corner was originally established as a wood post in 1822.



Kenneth E. Hedge, County Surveyor

James S. Swift, IN LS 20200054
May 22, 2019

Washington Township

Section 33 T20N, R1W	Section 34 T20N, R1W
-------------------------	-------------------------

SECTION CORNER RECORD

NW 700-200

BOONE COUNTY SURVEYOR'S OFFICE

State Plane grid coordinates NAD83 (2011):
North: 1782550.76 East: 3114232.84 (U.S. survey feet)

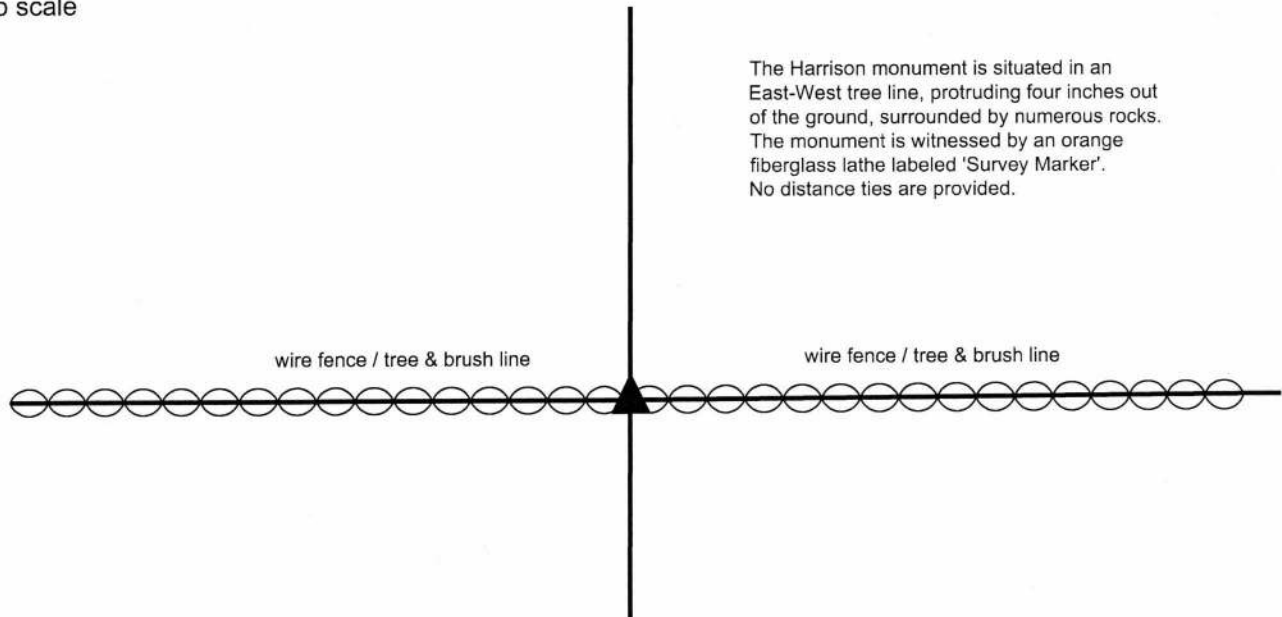
Type of monument: Harrison, 4" disk 'Section Corner'
Depth: Four inches above adjacent ground

Indiana tie card references:
IN02_T20NR1W27_80 IN02_T20NR1W26_72
IN02_T20NR1W34_08 IN02_T20NR1W35_00



CORNER WITNESS DETAIL

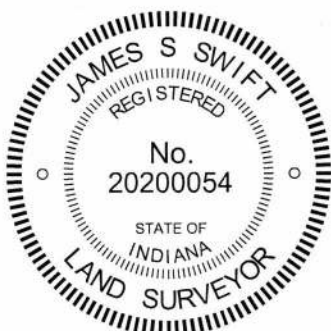
No scale




The Harrison monument is situated in an East-West tree line, protruding four inches out of the ground, surrounded by numerous rocks. The monument is witnessed by an orange fiberglass lathe labeled 'Survey Marker'. No distance ties are provided.

The Harrison monument was set over the base of a wood corner post. A BCS record of October 21, 1871 states, with respect to this corner, "Corner of section 26, 27, 34 & 35 reestablished from trees, boxed Ash, and found mark. Hickory out. Set rock 18x15x10 +." No recent BCS tie cards were found referencing this corner. Excavation was performed at this corner on November 1, 2017. Prior to excavation an ancient wood post was found with fencing to the east and west. The post is the most substantial post found in the east-west fence line in this vicinity and clearly appears to represent a corner post. The post is known to have been held as marking the corner for previous surveys in the area and the position of the post works well with the relative positions of proximate corners, particularly with the strong evidence of the corners 1/2 and 1/4 mile north, respectively. (See documentation for corner NW 750-200.) Many rocks were found around and in the immediate vicinity of the post, including an extremely large piece of granite immediately west of the post. Excavation of the various rocks and inspection of the dimensions thereof did not reveal the stone described in the 1871 record. The huge piece of granite to the west of the post was not displaced, though excavation and probing under it did not yield the discovery of further rocks. The post, being an ancient cedar headpost 8 inches by 8 inches, was accepted as the best available evidence of the corner and was held as marking the corner. The top of the post was broken off from the subterranean base of the post at approximately 4 inches below ground level. The Harrison monument was set directly over the base of the post, anchored in part to the aforementioned adjacent large piece of granite and also anchored to the top 10 inches of the remaining portion of the base of the post.

This corner was originally established as a wood post in 1829.




Kenneth E. Hedge, County Surveyor


James S. Swift, IN LS 20200054
December 13, 2017

Washington Township

Section 27 T20N, R1W	Section 26 T20N, R1W
Section 34 T20N, R1W	Section 35 T20N, R1W

SECTION CORNER RECORD

NW 700-200

BOONE COUNTY SURVEYOR'S OFFICE

State Plane grid coordinates NAD83 (2011):

North: 1782550.76 East: 3114232.84 (U.S. survey feet)

Type of monument: 5/8" diameter rebar with aluminum cap stamped 'Boone County Surveyor'

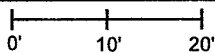
Depth: Three inches below adjacent ground

Indiana tie card references:

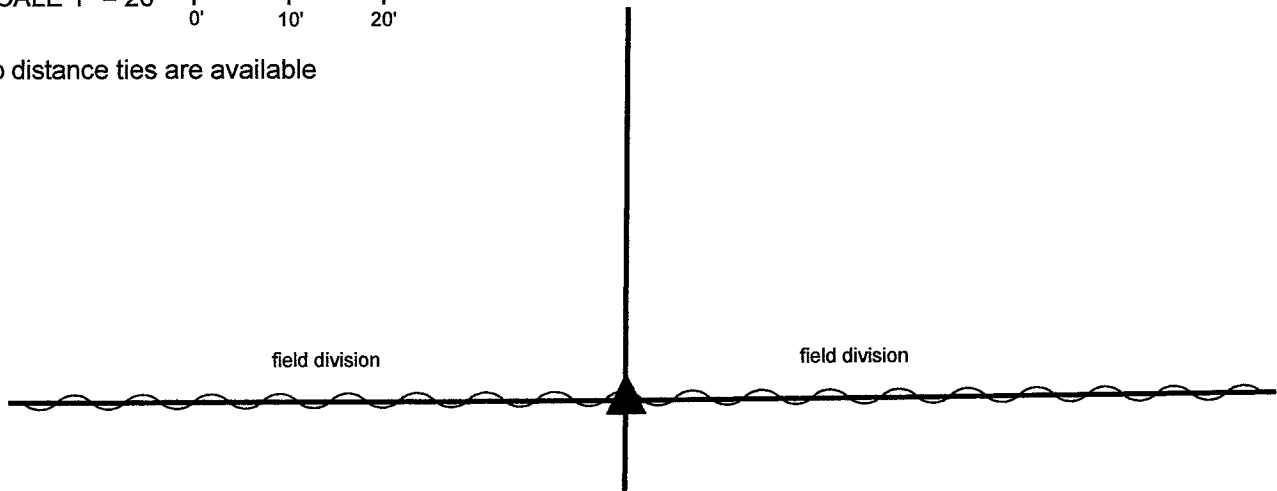
IN02_T20NR1W27_80 IN02_T20NR1W26_72

IN02_T20NR1W34_08 IN02_T20NR1W35_00

CORNER WITNESS DETAIL

SCALE 1" = 20' 

No distance ties are available



This corner was monumented in 2017. In the fall of 2020, the standing east-west fence was removed by the adjoining land owners and the Harrison monument which had been set over the base of a wood corner post was destroyed when the adjacent rocks were removed but the base of the wood post was left largely intact. On March 25, 2021, a rebar was driven into the remnants of the base of the post at the same position previously marked by the Harrison monument.

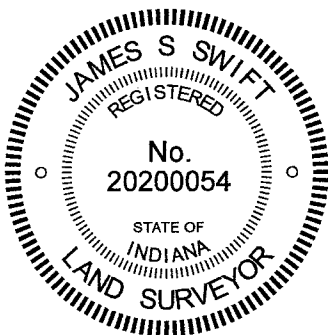
The report of findings and monumentation from 2017 is as follows:

The Harrison monument was set over the base of a wood corner post.


A BCS record of October 21, 1871 states, with respect to this corner, "Corner of section 26, 27, 34 & 35 reestablished from trees, boxed Ash, and found mark. Hickory out. Set rock 18x15x10 +." No recent BCS tie cards were found referencing this corner.

Excavation was performed at this corner on November 1, 2017. Prior to excavation an ancient wood post was found with fencing to the east and west. The post is the most substantial post found in the east-west fence line in this vicinity and clearly appears to represent a corner post. The post is known to have been held as marking the corner for previous surveys in the area and the position of the post works well with the relative positions of proximate corners, particularly with the strong evidence of the corners 1/2 and 1/4 mile north, respectively. (See documentation for corner NW 750-200.) Many rocks were found around and in the immediate vicinity of the post, including an extremely large piece of granite immediately west of the post. Excavation of the various rocks and inspection of the dimensions thereof did not reveal the stone described in the 1871 record. The huge piece of granite to the west of the post was not displaced, though excavation and probing under it did not yield the discovery of further rocks. The post, being an ancient cedar headpost 8 inches by 8 inches, was accepted as the best available evidence of the corner and was held as marking the corner. The top of the post was broken off from the subterranean base of the post at approximately 4 inches below ground level. The Harrison monument was set directly over the base of the post, anchored in part to the aforementioned adjacent large piece of granite and also anchored to the top 10 inches of the remaining portion of the base of the post.

This corner was originally established as a wood post in 1829.




 Kenneth E. Hedge, County Surveyor


 James S. Swift, IN LS 20200054

December 13, 2017 - revised June 1, 2021

Washington Township

Section 27 T20N, R1W	Section 26 T20N, R1W
Section 34 T20N, R1W	Section 35 T20N, R1W

SECTION CORNER RECORD

NW 700-250

BOONE COUNTY SURVEYOR'S OFFICE

State Plane grid coordinates NAD83 (CORS96):

North: 1782547.98 East: 3111597.04 (U.S. survey feet)

Type of monument: Harrison, 4" disk 'Section Corner'

Depth: One inch below adjacent road surface

Indiana tie card references:

IN02_T20NR1W27_76 IN02_T20NR1W34_04

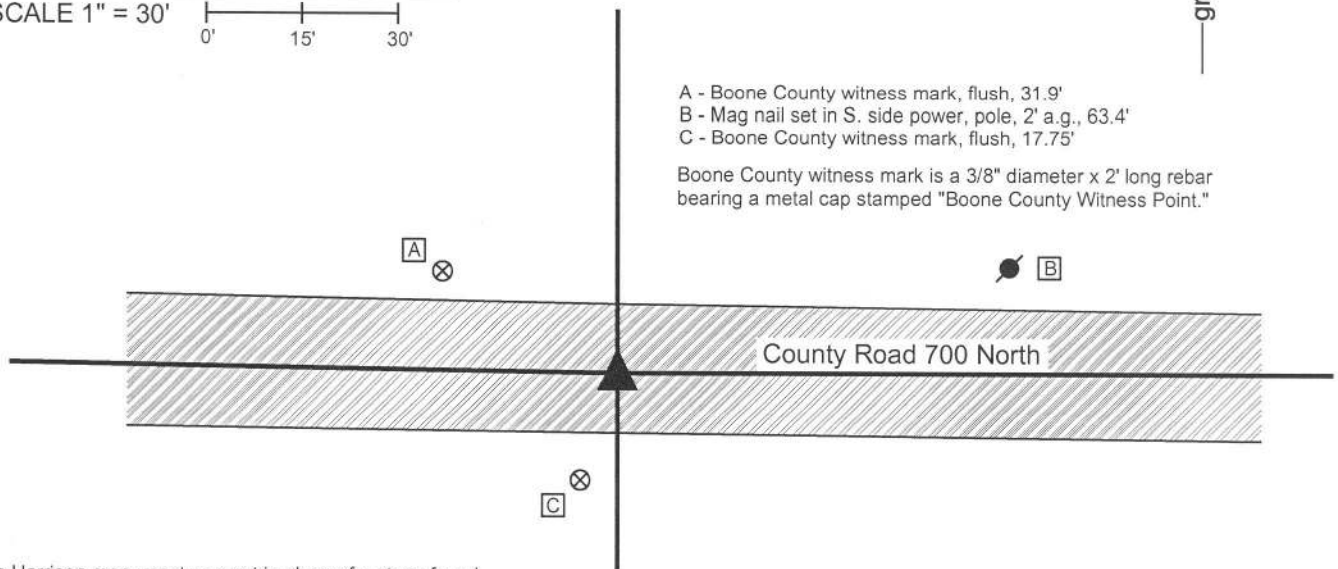
CORNER WITNESS DETAIL

SCALE 1" = 30'



- A - Boone County witness mark, flush, 31.9'
- B - Mag nail set in S. side power, pole, 2' a.g., 63.4'
- C - Boone County witness mark, flush, 17.75'

Boone County witness mark is a 3/8" diameter x 2' long rebar bearing a metal cap stamped "Boone County Witness Point."



The Harrison monument was set in place of a stone found.

A BCS record dated March 23, 1874 states, with respect to this corner, "Reestablished from stump of Poplar and after finding a stake I drove when surveying the road when I had both trees, Set Two Rocks. Under one 12x7x6 +. Top one 12x11x6 +." No recent BCS tie cards were found referencing this corner.

Excavation was performed at this corner on July 3, 2014. Prior to excavation a Mag nail was found at the surface of the road in line with occupation lines to the north and south. Excavation revealed a vertical section of railroad rail found at 6 inches deep, north and west of the nail. Further excavation revealed a stone found at 12 inches deep, slightly south and east of both the nail and rail. As found, the stone appeared to be leaning to the east, presumably having been displaced from its vertical position by road grading equipment. The stone was stood up in a vertical orientation and an etched "+" mark was clearly visible on the top of the stone. As stood up the stone measured 13 inches tall by 11 inches N-S by 6 inches E-W. This stone was accepted as being the top stone described in the 1874 record. The stone was removed and the lower stone was searched for but not found. Further excavation of an area being approximately 30 inches wide, centered in the N-S dimension on the found stone and extending 2 feet east and 3 feet west of the stone yielded no further evidence of the corner. No explanation is offered for the fact that the record lower stone was not found. It is possible that the upper stone had been displaced from its original position when it was knocked, hence moved from over the lower stone. However, this is not considered likely, given that the upper stone was well embedded in the clay layer below the road and appeared merely to be leaning, not displaced. If it was displaced, it seems even less likely that it would have been moved more than 2 feet and yet remained partially vertical. The position of the stone of the stone, as stood vertical where it was originally found, was held as marking the corner. A Harrison monument was set in this position. The Mag nail and railroad rail were both removed during excavation. The source of these monuments is not known. The Mag nail had been 0.4 foot north and 0.3 foot west of the corner. The rail had been 1 foot north and 1 foot west of the corner.

This corner was originally established as a wood post in 1829.



Kenneth E. Hedge
Kenneth E. Hedge, County Surveyor

James S. Swift
James S. Swift, IN LS 20200054
March 27, 2015

Washington Township

Section 27
T20N, R1W

Section 34
T20N, R1W

PHOTOGRAPHIC DOCUMENTATION

Date of photography: July 3, 2014

The stone as originally found, leaning towards the east (which is to the left on this picture.)



The excavation area with #53 stone in the bottom of the trench, approximately 30" wide by 5' long excavated in search of the record lower stone.



The stone stood up, showing the etched "+" mark on top.



View from the west, looking across the stone and east along County Road 700 North.



The same picture as above with the mark visually enhanced for ease of visual detection.



For details and documentation, refer to related sheet "Section Corner Record."

SECTION CORNER RECORD

BOONE COUNTY SURVEYOR'S OFFICE

NW 700-300

State Plane grid coordinates NAD83 (2011):

North: 1772068.94 East: 3087819.95 (U.S. survey feet)

Type of monument: 4 inch Mag spike set over

Brass Plug in monument box, INDOT Type B

Depth: Mag spike - flush, plug - 5 inches deep

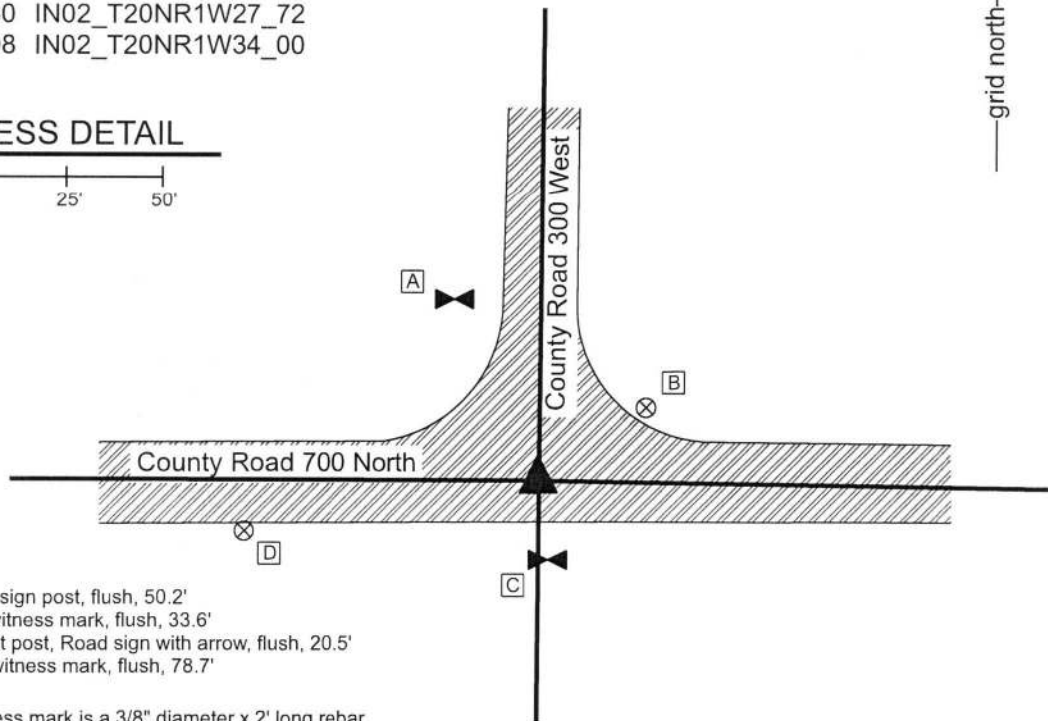
Indiana tie card references:

IN02_T20NR1W28_80 IN02_T20NR1W27_72

IN02_T20NR1W33_08 IN02_T20NR1W34_00

CORNER WITNESS DETAIL

SCALE 1" = 50'

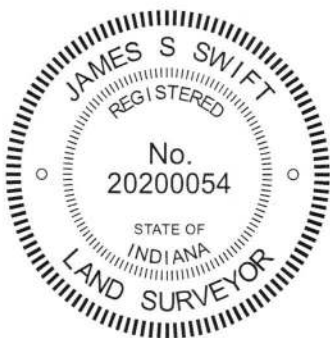


- A - East edge, stop sign post, flush, 50.2'
- B - Boone County witness mark, flush, 33.6'
- C - West edge, west post, Road sign with arrow, flush, 20.5'
- D - Boone County witness mark, flush, 78.7'

Boone County witness mark is a 3/8" diameter x 2' long rebar bearing a metal cap stamped "Boone County Witness Point."

The brass plug within the monument box was found in place, buried under 5 inches of asphalt. The Mag Spike was set directly over the plug. A BCS record dated September 25, 1871 states, with respect to this corner, "Reestablished from knowledge obtained when surveying road, when stump of one tree was here. Found two stakes I drove at that time, One 15 ft. N, the other 15 ft. S. of Corner. Set rock 28x16x10." No recent BCS tie cards were found referencing this corner.

No excavation was performed at this corner beyond exposing the monument box from below the 5 inch covering of asphalt due to the fact that the corner falls in an area of substantial fill associated with the approach to the overpass of County Road 700 North over Interstate 65. The corner is shown on the plans for I-65, reference R-08208-29, fiscal year 1969, plan I-65-5(36) 140. The plans show the corner at the intersection of 'Sec. Lines' and is labeled as "approx. 1/4 Sect. Cor. TYPE B MONUMENT REQ'D." It is believed that the monument has been held as the corner by surveyors since being established in association with the construction of Interstate 65. Due to the substantial fill placed during the construction of the overpass, it is not practical to excavate for further evidence and the INDOT Type B monument was held as marking the corner. The position of the monument works well with the relative positions of proximate corner and works well with the local evidence of the corner in the form of the roadways to the east and north. On July 17, 2018, the top of the monument box was exposed, the lid of the box was removed and the brass plug located. Asphalt patching was placed over the box, with no lid, and plug to flush with the surface of the road. On August 3, 2018, a 4 inch long Mag Spike was set directly over the brass plug. This corner was originally established as a wood post in 1822.



Kenneth E. Hedge
 Kenneth E. Hedge, County Surveyor

James S. Swift
 James S. Swift, IN LS 20200054
 August 7, 2018

Washington Township

Section 28 T20N, R1W	Section 27 T20N, R1W
Section 33 T20N, R1W	Section 34 T20N, R1W