

# SECTION CORNER RECORD

# NE 600-300

## BOONE COUNTY SURVEYOR'S OFFICE

State Plane grid coordinates NAD83 (2011):

Corner 1: North: 1777482.45 East: 3140144.30 (U.S. survey feet)

Corner 2: North: 1777484.65 East: 3140271.66 (U.S. survey feet)

Type of monument: INDOT Type B, plug in monument box

Depth: Flush with adjacent road surface

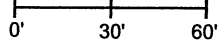
Indiana tie card references:

IN02\_T20NR1E33\_80 IN02\_T20NR1E34\_72

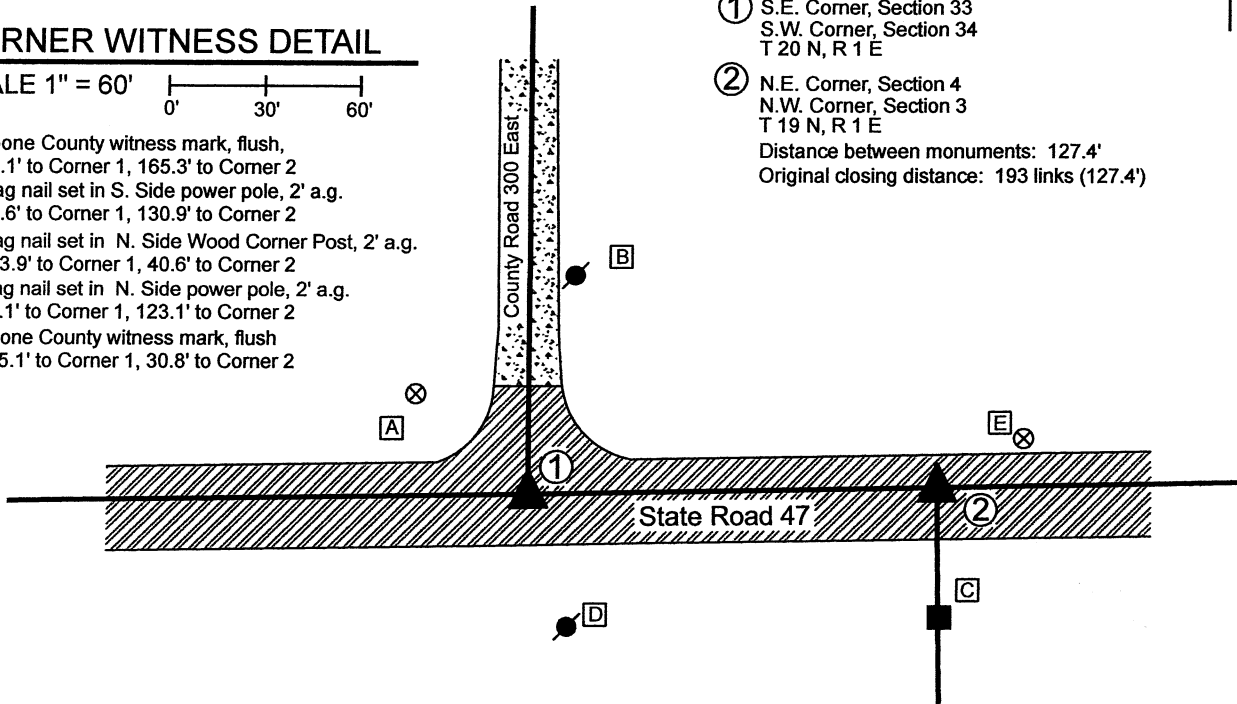
IN02\_T19NR1E04\_08 IN02\_T19NR1E03\_00

### CORNER WITNESS DETAIL

SCALE 1" = 60'



- A - Boone County witness mark, flush, 47.1' to Corner 1, 165.3' to Corner 2
- B - Mag nail set in S. Side power pole, 2' a.g. 69.6' to Corner 1, 130.9' to Corner 2
- C - Mag nail set in N. Side Wood Corner Post, 2' a.g. 133.9' to Corner 1, 40.6' to Corner 2
- D - Mag nail set in N. Side power pole, 2' a.g. 43.1' to Corner 1, 123.1' to Corner 2
- E - Boone County witness mark, flush 155.1' to Corner 1, 30.8' to Corner 2



① S.E. Corner, Section 33  
S.W. Corner, Section 34  
T 20 N, R 1 E

② N.E. Corner, Section 4  
N.W. Corner, Section 3  
T 19 N, R 1 E

Distance between monuments: 127.4'  
Original closing distance: 193 links (127.4')



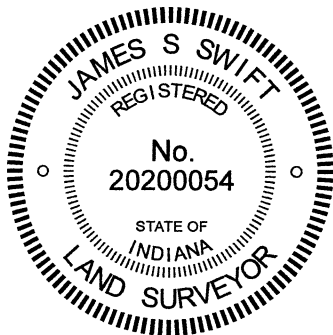
The INDOT Type B monuments were found in place and held as marking the respective corners.

A BCS record of April 7, 1855 states, with respect to Corner 2, "Stone in Road." A BCS record of March 14, 1873 states, with respect to Corner 1, "Found from corner of Sects 4 & 3 where we set the rock deeper and placed one under it, 12.8.6." No distance is provided in these records to indicate the separation of the two monuments, though it is noted that the original federal closing distance recorded in 1822 is 193 links or 127.4 feet.

A BCS tie card dated 2004 shows both corners as P.K. Nail with washers. A subsequent BCS tie card dated June 22, 2005 shows both corners as INDOT Type "C" Monuments, in positions which agree precisely with the P.K. Nails shown on the previous tie card.

The INDOT monuments, being Type B monuments (brass plug in monument box), were found in good condition in positions which agree with the 2005 BCS tie card. These corners were not excavated as the fall in a state highway. The Type B monuments were held as marking the respective corners. Corner 1 agrees with local evidence in the form of being at the intersection of the east-west state road and the county road to the north. Corner 2 agrees with local evidence in the form of being in the center of the east-west state road, immediately north of an old wood corner post on the south side of the road. It is noted that the two corners are separated by the original federal closing distance of 193 links or 127.4 feet.

Corner 1 was originally established as a wood post in 1819. Corner 2 was original established as a wood post in 1822.



*Kenneth E. Hedge*  
Kenneth E. Hedge, County Surveyor

*James S. Swift*  
James S. Swift, IN LS 20200054

January 12, 2020

Clinton Township

Section 33 T20N, R1E	Section 34 T20N, R1E
Section 4 T19N, R1E	Section 3 T19N, R1E

# SECTION CORNER RECORD

# NE 600-350

## BOONE COUNTY SURVEYOR'S OFFICE

State Plane grid coordinates NAD83 (2011):

Corner 1: North: 1777528.12 East: 3142786.08 (U.S. survey feet)

Corner 2: North: 1777529.77 East: 3142871.13 (U.S. survey feet)

① South Quarter Corner  
Section 34, T 20 N, R 1 E

② North Quarter Corner  
Section 3, T 19 N, R 1 E

Distance between monuments: 85.1'  
Previously reported distance: 137 links = 90.4'

Type of monument: INDOT Type B, plug in monument box

Depth: flush with adjacent road surface

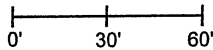
Indiana tie card references:

IN02\_T20NR1E34\_76

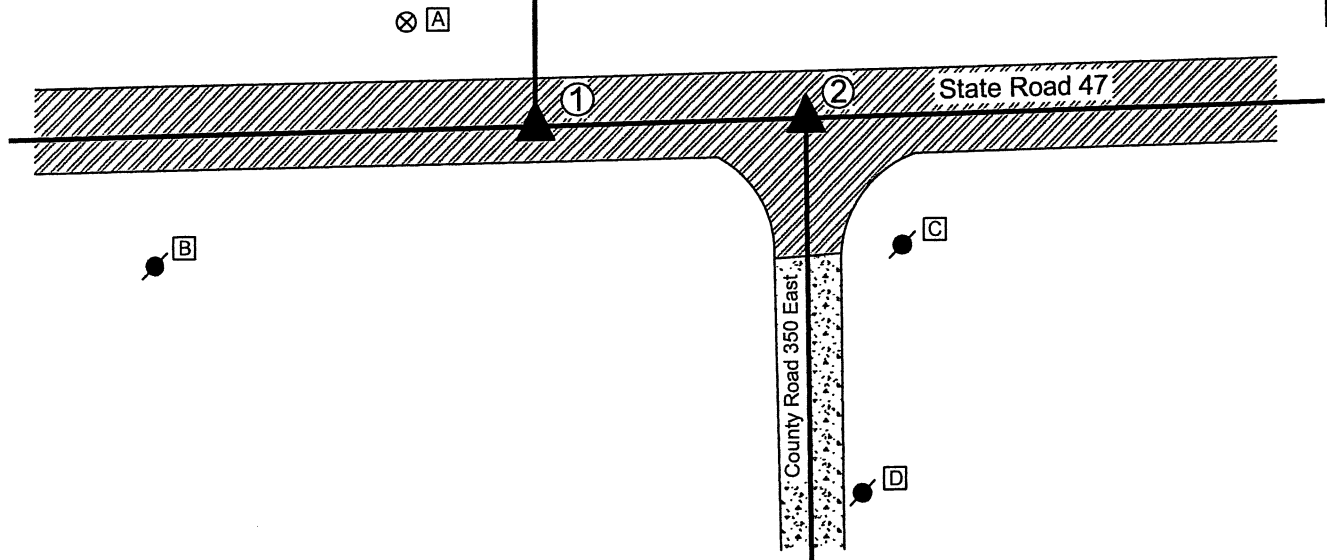
IN02\_T19NR1E03\_04

### CORNER WITNESS DETAIL

SCALE 1" = 60'

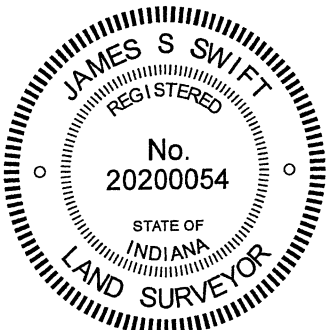


- A - Boone County witness mark, flush, 52.4' to Corner 1, 129.7' to Corner 2
- B - Mag nail set in N. side PWP, 2' a.g. 127.6' to Corner 1, 210.2' to Corner 2
- C - Mag nail set in N. side PWP, 2' a.g. 121.9' to Corner 1, 50.1' to Corner 2
- D - Mag nail set in NW. side PWP, 2' a.g. 154.3' to Corner 1, 117.9' to Corner 2



The INDOT Type B monuments were found in place and held as marking the respective corners. A BCS record of October 8, 1861 states, with respect to Corner 1, "Reestablished, set two rocks. One 16.8 by 6 in. Top Rock 18.10 by 8 in." A BCS record of August 27, 1881 states, with respect to Corner 2, "... 137 links laps from "F" in 34 set Rock 10x8x7 marked +." The reference to "F" in 34 is a reference to Corner 1, as shown hereon. It is noted that the 137 link offset is approximately the average of the original federal closing distances at the northeast and northwest corners of Section 3.

A BCS tie card dated September 1, 1995 shows both corners at 85.44 feet apart, noting Corner 2 to be a P.K. Nail with washer set. A BCS tie card dated 2004 shows both corners as PK Nails with washers, at 85.1 feet apart. Subsequent BCS tie cards, dated June 22, 2005 show both corners as Type "C" Monuments, in the same evident positions as shown on the 2004 tie cards. The monuments found, being INDOT Type B monuments, appear to be the same monuments in the same positions as shown on the 2005 tie cards. It is noted that these monument are approximately five feet closer to each other than the reported distance of 137 links, as noted on the 1881 tie card. No excavation was performed at these corners, as they fall in a state highway. The corners as held by this office in 2004-2006 are held, acknowledging up to 5.4 feet of uncertainty east-west with respect to the previous BCS records. Corner 1 was originally established as a wood post in 1819. Corner 2 is not an original federal corner.



*Kenneth E. Hedge*  
Kenneth E. Hedge, County Surveyor

*James S. Swift*  
James S. Swift, IN LS 20200054

February 17, 2021

Clinton  
Township

Section 34  
T20N, R1E



Section 3  
T19N, R1E

# SECTION CORNER RECORD

# NE 600-400

## BOONE COUNTY SURVEYOR'S OFFICE

State Plane grid coordinates NAD83 (2011):

Corner 1: North: 1777577.77 East: 3145401.96 (U.S. survey feet)

Corner 2: North: 1777578.71 East: 3145456.06 (U.S. survey feet)

Type of monument: INDOT type B, plug in monument box

Depth: Flush with adjacent road surface

Indiana tie card references:

IN02\_T20NR1E34\_80 IN02\_T20NR1E35\_72

IN02\_T19NR1E03\_08 IN02\_T19NR1E02\_00



### CORNER WITNESS DETAIL

SCALE 1" = 50'

A - Boone County witness mark, flush,

38.5' to Corner 1, 85.7' to Corner 2

B - Mag nail set in N. side PWP, 2.8' a.g.

77.0' to Corner 1, 126.1' to Corner 2

C - Mag nail set in S. side PWP 2' a.g.

39.7' to Corner 1, 74.7' to Corner 2

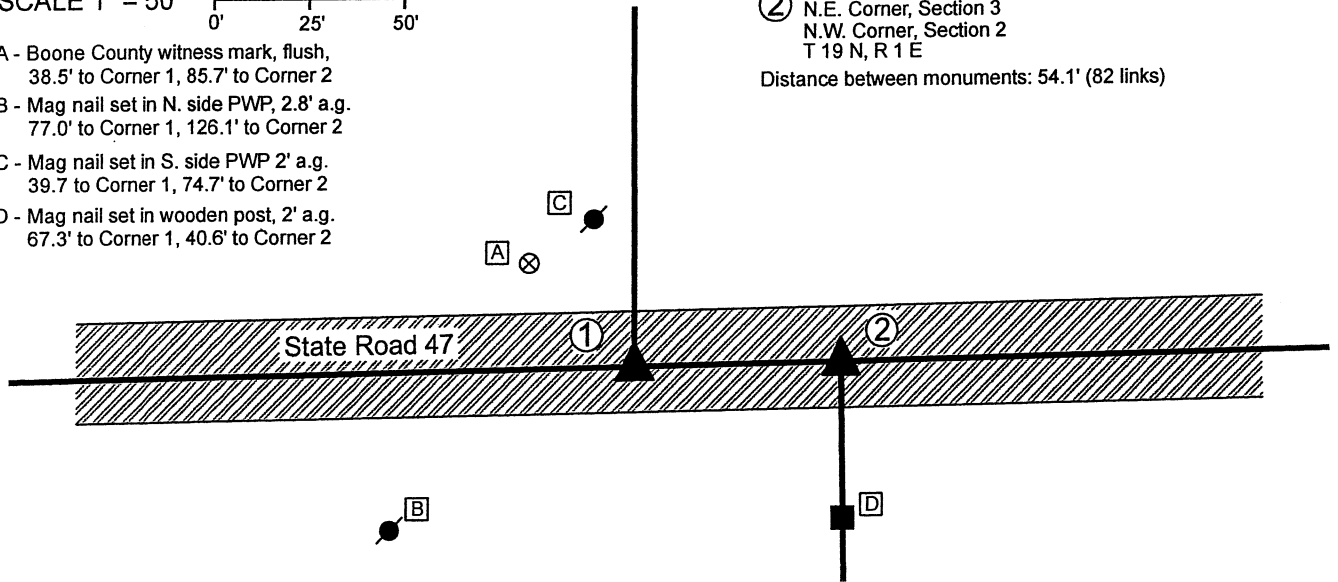
D - Mag nail set in wooden post, 2' a.g.

67.3' to Corner 1, 40.6' to Corner 2

① S.E. Corner, Section 34  
S.W. Corner, Section 35  
T 20 N, R 1 E

② N.E. Corner, Section 3  
N.W. Corner, Section 2  
T 19 N, R 1 E

Distance between monuments: 54.1' (82 links)



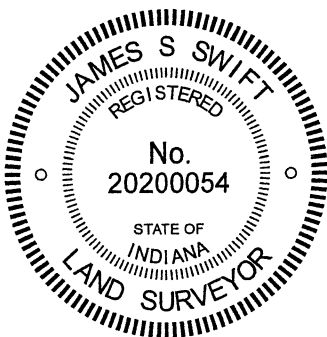
The INDOT Type B monuments were found in place and held as marking the respective corners.

A BCS record of November 6, 1871 states, with respect to Corner 1, "Reestablished from stumps of Elm and rotten roots of Hickory, Set Rock 17.12.12 +."

A BCS record of the same date states, with respect to Corner 2, "Reestablished 82 links East of corner, Sects. 35 & 36, which I found from stumps. Set a Rock 17.11.7 +."

A BCS tie card dated 2004 shows both corners as PK Nails with washers, at 54.12 feet (82 links) apart. Subsequent BCS tie cards, dated June 22, 2005 show both corners as Type "C" Monuments, in the same evident positions as shown on the 2004 tie cards. The monuments found, being INDOT Type B monuments, appear to be the same monuments in the same positions as shown on the 2005 tie cards. It is noted that these monument are located at 54.1 feet apart, matching the original federal closing distance of 82 links, which also matched the 1871 BCS records. No excavation was performed at these corners, as they fall in a state highway. The corners as held by this office in 2004-2006 are held hereon.

Corner 1 was originally established as a wood post in 1819. Corner 2 was originally established as a wood post in 1822.

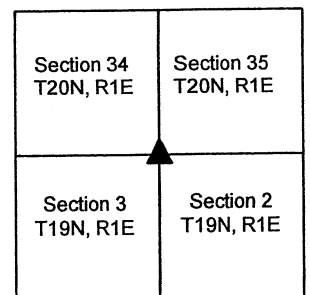


Kenneth E. Hedge, County Surveyor

James S. Swift, IN LS 20200054

February 17, 2021

Clinton Township



# SECTION CORNER RECORD

NE 650-300

## BOONE COUNTY SURVEYOR'S OFFICE

State Plane grid coordinates NAD83 (CORS96):

North: 1780120.91 East: 3140145.25 (U.S. survey feet)

Type of monument: Harrison, 4" disk 'Section Corner'

Depth: six inches below adjacent gravel road surface

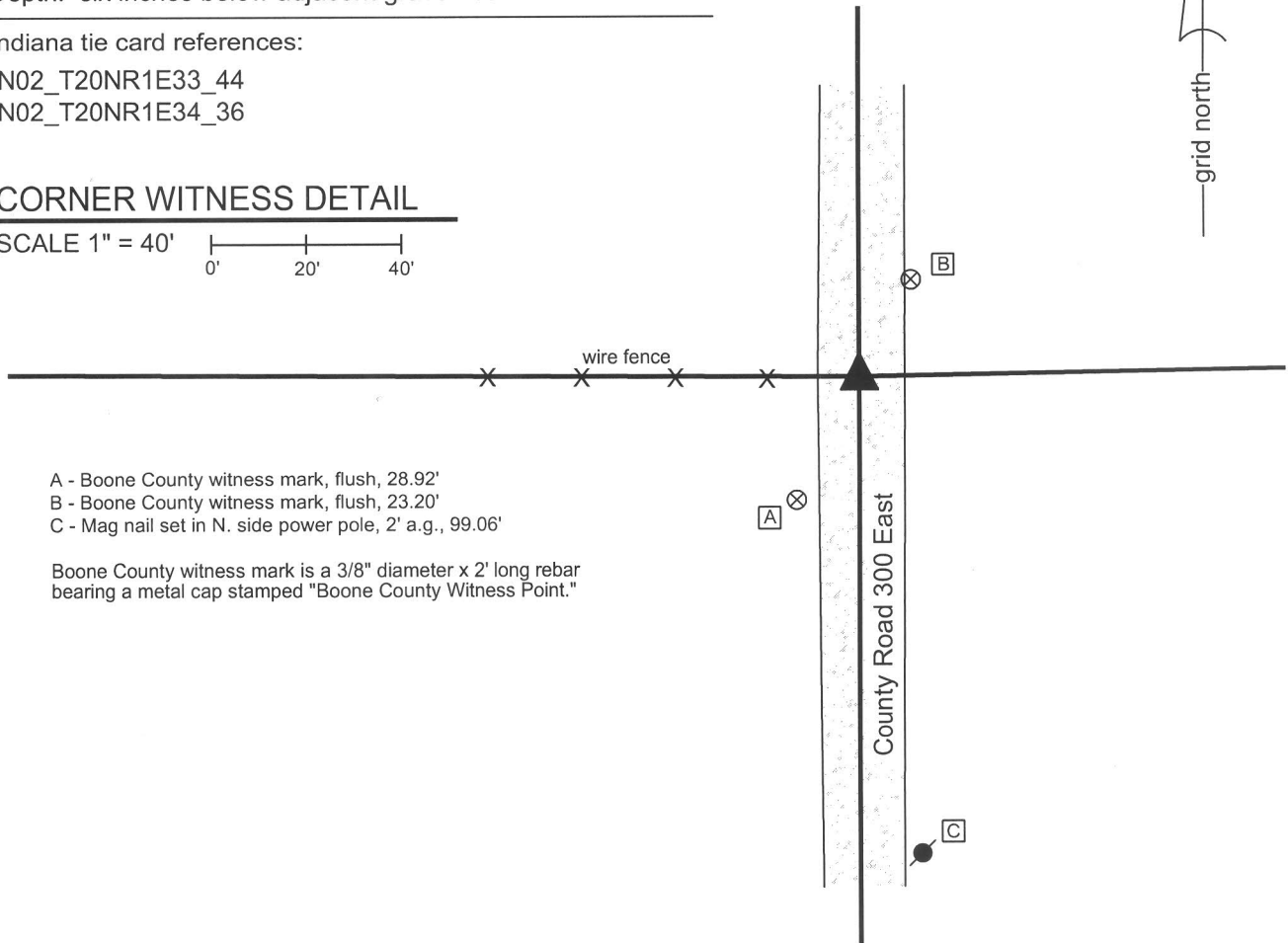
Indiana tie card references:

IN02\_T20NR1E33\_44

IN02\_T20NR1E34\_36

### CORNER WITNESS DETAIL

SCALE 1" = 40'



- A - Boone County witness mark, flush, 28.92'
- B - Boone County witness mark, flush, 23.20'
- C - Mag nail set in N. side power pole, 2' a.g., 99.06'

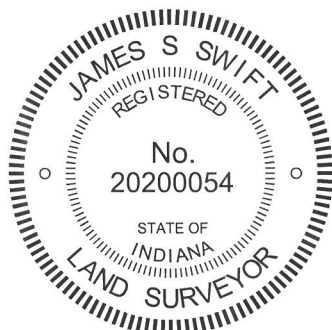
Boone County witness mark is a 3/8" diameter x 2' long rebar bearing a metal cap stamped "Boone County Witness Point."

The harrison monument was set in place of a railroad rail found.

A BCS record of March 14, 1873 states "ReEst from stumps. Set a Rock 12.9.6+ with one under it 6.6.5+." A BCS tie card dated September, 1975 calls "2 stones found - set rail."

This corner was excavated on December 3, 2013. Prior to excavation a railroad rail was found, flush with the surface of the gravel road. The rail appeared to have been hit by road grading equipment and was leaning slightly to the south and east. Excavation revealed no further evidence of the corner. It is believed that the stones were most likely removed in 1975 and replaced by the rail, as this is known to have been a common practice by BCS crews in that time frame. A harrison monument was set in the position of the bottom of the rail, as found, 0.7' north and 0.25' west of the position of the top of the rail as it was originally found.

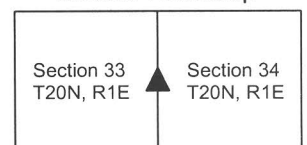
This corner was originally set as a wood post in 1822.



*Kenneth E. Hedge*  
Kenneth E. Hedge, County Surveyor

*James S. Swift*  
James S. Swift, IN LS 20200054  
February 5, 2014

Clinton Township



# SECTION CORNER RECORD

NE 650-400

## BOONE COUNTY SURVEYOR'S OFFICE

State Plane grid coordinates NAD83 (2011):

North: 1780209.35 East: 3145398.12 (U.S. survey feet)

Type of monument: Harrison, 4" disk 'Section Corner'

Depth: Five inches above adjacent ground

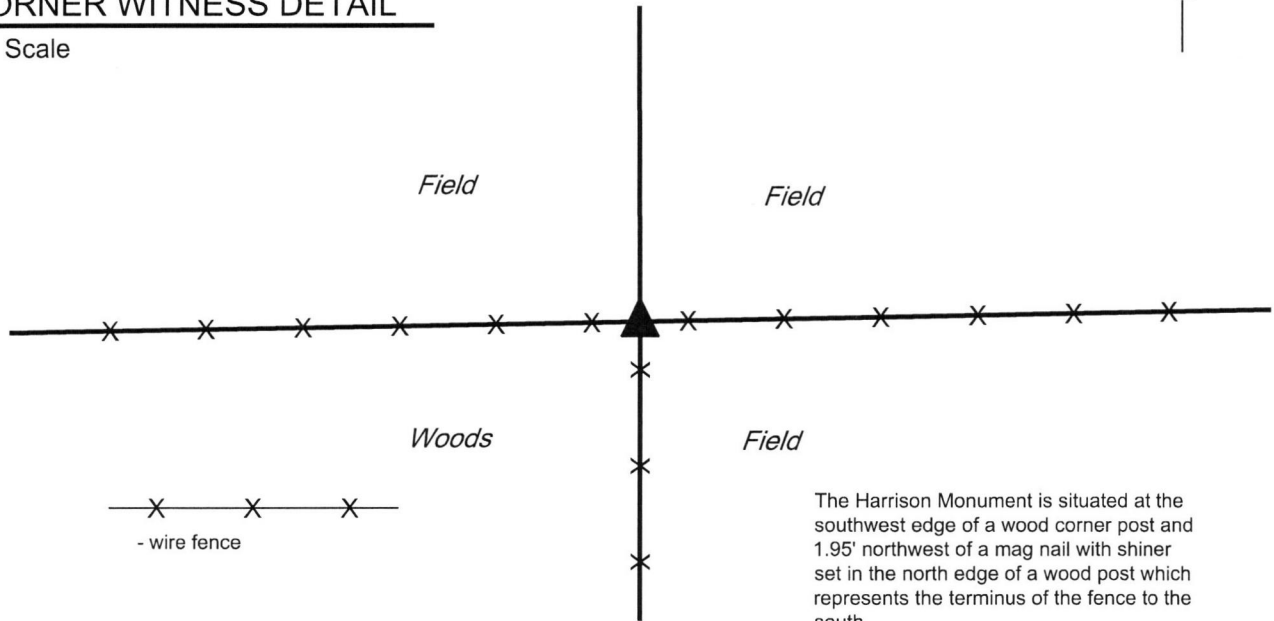
Indiana tie card references:

IN02\_T20NR1E34\_44 IN02\_T20NR1E35\_36



### CORNER WITNESS DETAIL

No Scale



The Harrison Monument is situated at the southwest edge of a wood corner post and 1.95' northwest of a mag nail with shiner set in the north edge of a wood post which represents the terminus of the fence to the south.

The corner is at the northeast corner of a large wooded plot.

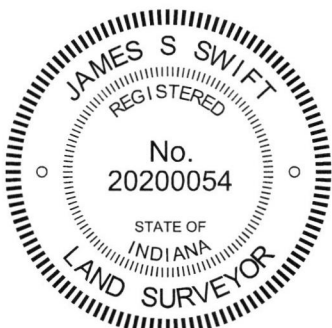
No other distance ties are provided.

The Harrison monument was set in place of a stone found.

A BCS record of November 6, 1871 states, with respect to this corner, "Reestablished from trees. Set Rock 12.7to6.5 + ." No recent BCS tie cards were found referencing this corner.

Excavation performed on February 26, 2018 revealed the stone described in the 1871 record found at the southwest edge of the base of a wood corner post. The stone was found approximately 3 inches deep, leaning slightly to the east. The position of the main body of the stone, as found, was held as the specific location of the corner. The stone was removed and replaced with a Harrison monument.

This corner was originally established as a wood post in 1822.

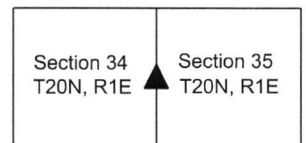


*Kenneth E. Hedge*  
Kenneth E. Hedge, County Surveyor

*James S. Swift*  
James S. Swift, IN LS 20200054

March 7, 2018

Clinton Township



# SECTION CORNER RECORD

NE 700-300

## BOONE COUNTY SURVEYOR'S OFFICE

State Plane grid coordinates NAD83 (CORSS96):

North: 1782761.20 East: 3140145.16 (U.S. survey feet)

Type of monument: Harrison, 4" disk 'Section Corner'

Depth: six inches below adjacent gravel road surface

Indiana tie card references:

IN02\_T20NR1E28\_80 IN02\_T20NR1E27\_72

IN02\_T20NR1E33\_08 IN02\_T20NR1E34\_00

### CORNER WITNESS DETAIL

SCALE 1" = 40'

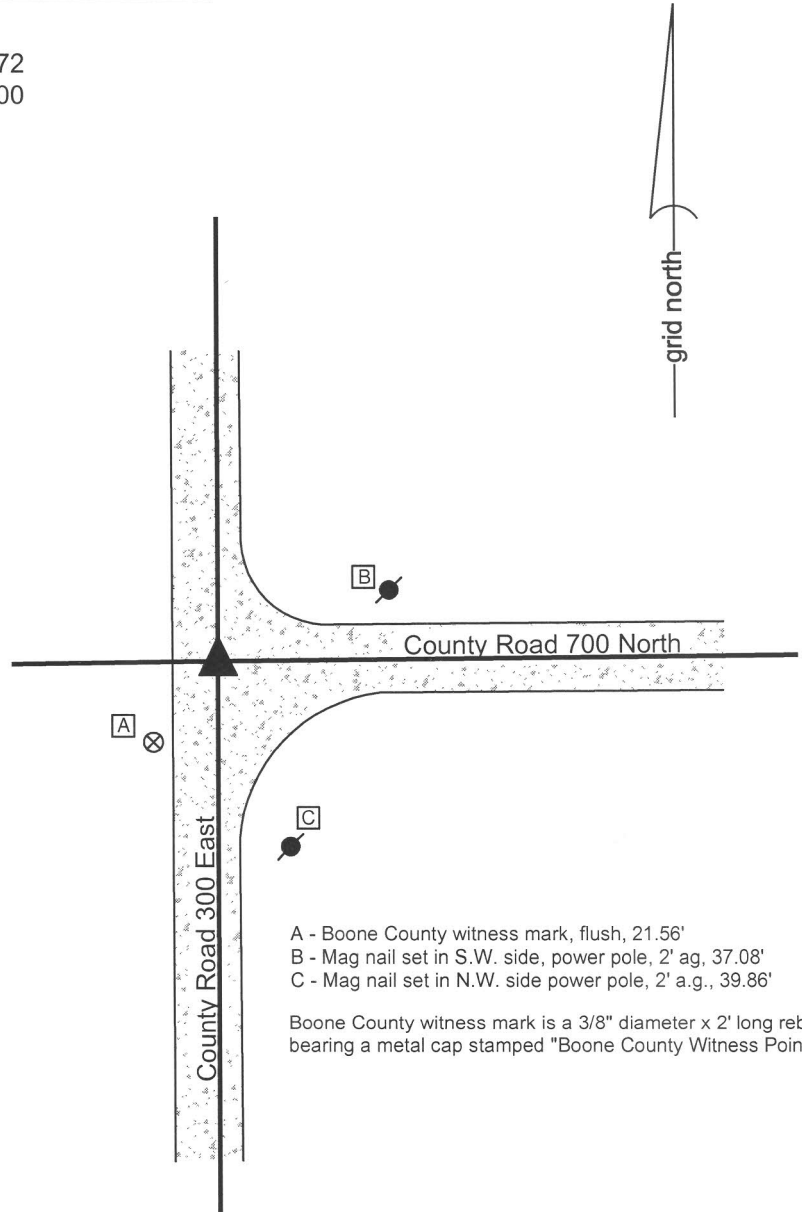


The Harrison monument was set over an etched "+" mark on the top of a stone.

A BCS record dated June 18, 1888 states, with respect to this corner, "Re-est. by the line H to h. Set rock 24, 14, 12 + .....". It is noted that "the line H to h" refers to the corners approximately 1/2 mile and 1/4 mile south, respectively. A BCS tie card dated September, 1975 states "Found stone Still in RRR" which is interpreted to mean that a stone was found, left in place and a railroad rail was set near to or against the stone.

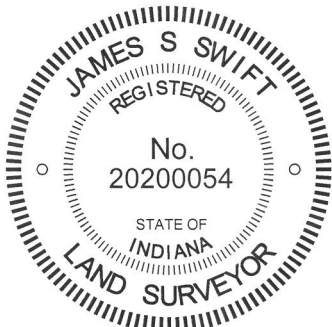
This corner was excavated on May 21, 2014. Prior to excavation, the top of a section of railroad rail was found at 2 inches below grade, apparently leaning to the south. Excavation revealed another railroad rail, leaning slightly to the north, south and west of the first rail. Further excavation revealed a stone found at 12 inches deep. The rail which had been found first was leaning over the top of the stone. The other rail was approximately 1 foot west of the top of the stone. The stone had a clearly etched "+" mark on the top. With 8 inches of the top of the stone exposed, it measured 12 inches E-W by 10 inches N-S and appeared to be vertical and oriented in cardinal directions. The stone was embedded in the clay layer below the road, protruding approximately 3 inches into the bottom of the road bed. With the top portion of the stone exposed, the dimensions of the stone approximated the 1888 record dimensions and it is expected that complete excavation would demonstrate that the stone is of very similar dimensions as called for in the 1888 record. With the similar dimensions and the obvious mark, the stone was accepted as being the same rock set in 1888 and was held as marking the corner. The stone was left in place, the two sections of railroad rail were removed and a Harrison monument was set directly over the etched "+" mark on the top of the stone.

This corner was originally established as a wood post in 1822.



- A - Boone County witness mark, flush, 21.56'
- B - Mag nail set in S.W. side, power pole, 2' ag, 37.08'
- C - Mag nail set in N.W. side power pole, 2' a.g., 39.86'

Boone County witness mark is a 3/8" diameter x 2' long rebar bearing a metal cap stamped "Boone County Witness Point."



*Kenneth E. Hedge*  
 Kenneth E. Hedge, County Surveyor

*James S. Swift*  
 James S. Swift, IN LS 20200054  
 March 27, 2015

Clinton Township

Section 28 T20N, R1E	Section 27 T20N, R1E
Section 33 T20N, R1E	Section 34 T20N, R1E

# SECTION CORNER RECORD

NE 700-350

## BOONE COUNTY SURVEYOR'S OFFICE

State Plane grid coordinates NAD83 (CORS96):

North: 1782790.70 East: 3142769.82 (U.S. survey feet)

Type of monument: Harrison, 4" disk 'Section Corner'

Depth: six inches below adjacent gravel road surface

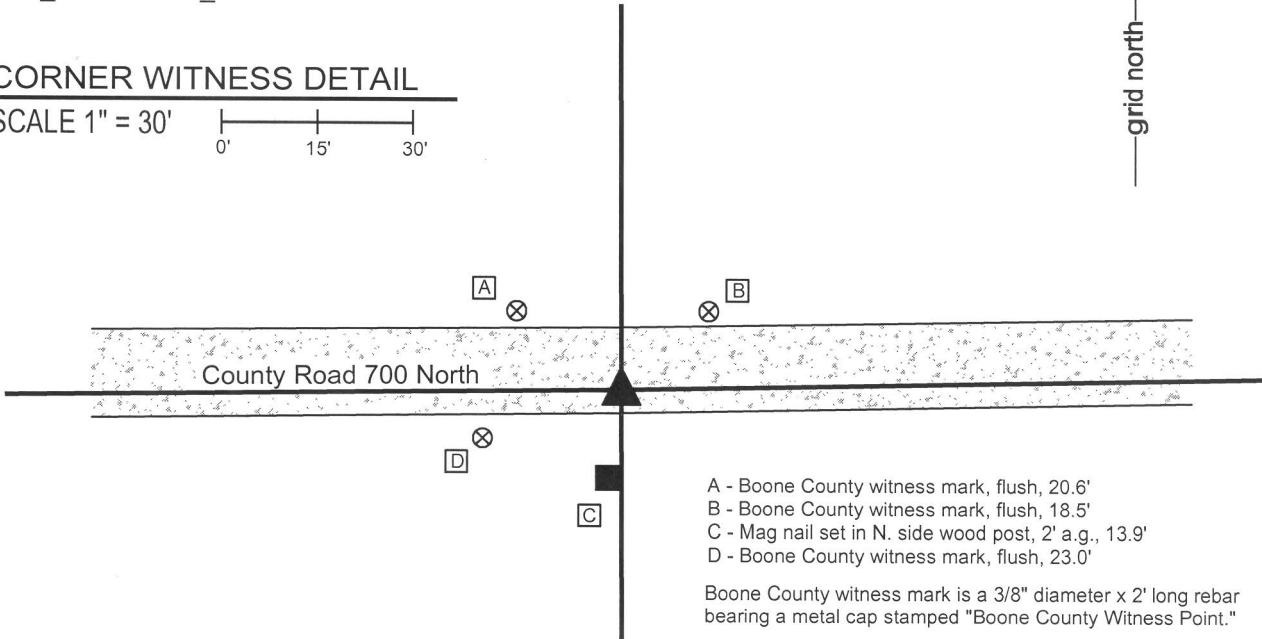
Indiana tie card references:

IN02\_T20NR1E27\_76

IN02\_T20NR1E34\_04

### CORNER WITNESS DETAIL

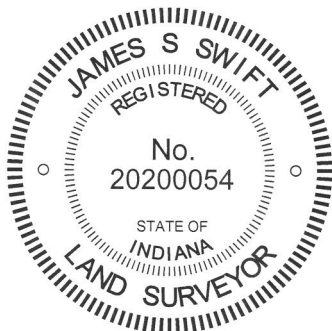
SCALE 1" = 30'



The Harrison monument was set over a stone found.

No specific descriptions of this corner were found in the BCS Surveyor's Record. The corner is mentioned as the terminal point for measurements in records of 1863 and 1872, implying that some object was present from which to measure at that time. No recent BCS tie cards were found referencing this corner.

Excavation occurred at this corner on May 22, 2014. Prior to excavation, a 5/8 inch diameter rebar was found, bent and slightly disturbed, at the surface of the road, near the south edge of the gravel roadway. Excavation revealed a stone found at 11 inches deep, south and east of the rebar. The stone was fully embedded in the clay layer below the road bed with the top of the stone being at the bottom of the road bed. The stone had a rounded top. With 9 inches of the top of the stone exposed, it measured 9 inches E-W by 10 inches N-S and remained stable in the clay. Clearly the stone was much larger than that part which was exposed. The stone appeared to be vertical, though the total height of the stone was not determined. No specific marks were found on the stone. The lack of marks is typical for stones for which the records are similar, wherein it may be concluded that the County Surveyor found and measured from the stone, rather than having set it. The stone was accepted as providing the best available evidence of the corner and the high point of the stone, being at the top, center of the rock was held as the corner. The rebar, removed during excavation, had been 0.5 foot north and 1.0 foot west of this point. The top 9 inches of the stone were encased in concrete and a short Harrison monument, actually being a 2 inch spacer with a lid, was set over the high point of the stone. The wood post on the south side of the road is approximately 2 feet west of the corner. This post appeared to be more of the type intended to denote a residential parcel from tillable ground than an ancient corner post. This corner was originally established as a wood post in 1822.



*Kenneth E. Hedge*  
Kenneth E. Hedge, County Surveyor

*James S. Swift*  
James S. Swift, IN LS 20200054  
March 27, 2015

Clinton Township

Section 27  
T20N, R1E

Section 34  
T20N, R1E

PHOTOGRAPHIC DOCUMENTATION

Date of photography: May 22, 2014

The stone as originally found.



The stone from above and west.



The stone from above. The marks seen in this picture were made by the excavator at the time of discovery of the stone.



View from the north, looking across the stone and towards the south.



The stone before the top was encased in concrete and the harrison monument set.



For details and documentation, refer to related sheet "Section Corner Record."



# SECTION CORNER RECORD

# NE 700-400

## BOONE COUNTY SURVEYOR'S OFFICE

State Plane grid coordinates NAD83 (2011):

North: 1782844.21 East: 3145397.87 (U.S. survey feet)

Type of monument: 5/8 inch rebar with metal cap 'Boone County Surveyor'

Depth: Flush with adjacent ground

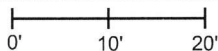
Indiana tie card references:

IN02\_T20NR1E27\_80 IN02\_T20NR1E26\_72

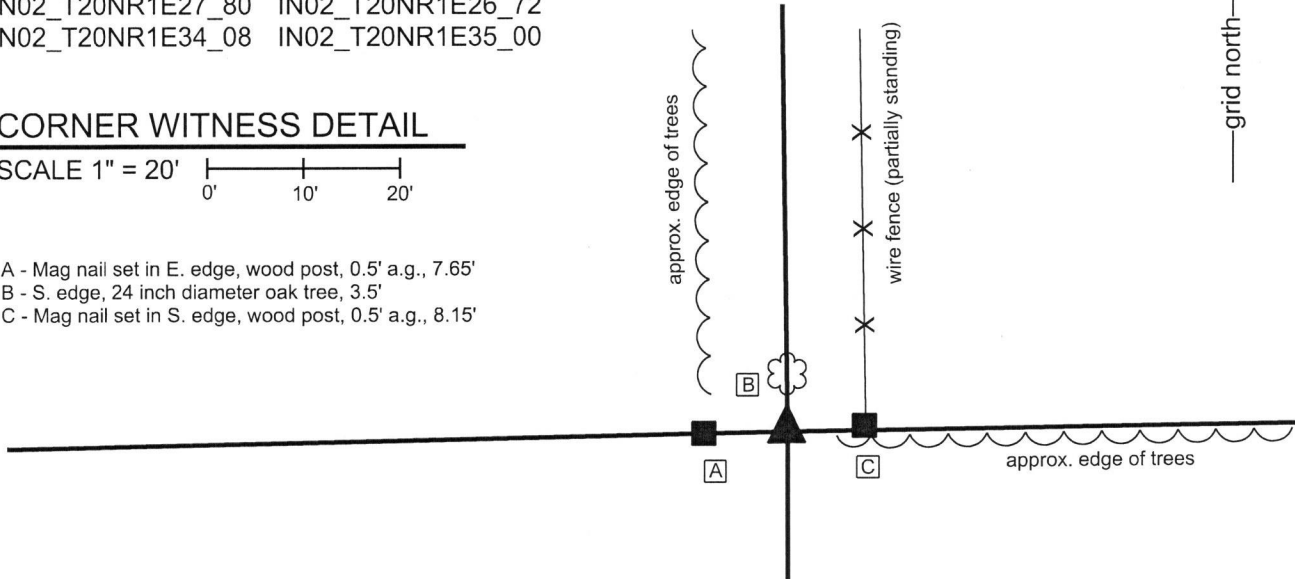
IN02\_T20NR1E34\_08 IN02\_T20NR1E35\_00

### CORNER WITNESS DETAIL

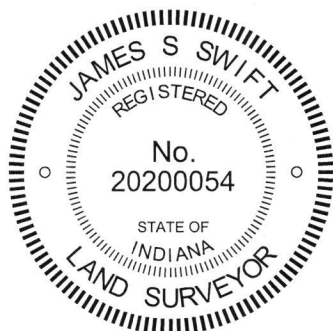
SCALE 1" = 20'



- A - Mag nail set in E. edge, wood post, 0.5' a.g., 7.65'
- B - S. edge, 24 inch diameter oak tree, 3.5'
- C - Mag nail set in S. edge, wood post, 0.5' a.g., 8.15'



The corner is monumented by a 30 inch length of 5/8 inch diameter rebar with a metal cap stamped 'Boone County Surveyor'. The rebar was set at a calculated position, in-line with and equidistant from posts approximately 8 feet east and west of the corner. No specific descriptions of this corner were found in the BCS Surveyor's Record. Neither recent BCS tie cards nor surveys recorded in the Office of the Boone County recorder found which reference the corner. Minor excavation and substantial probing were performed in the immediate vicinity of this corner on several occasions during April, 2018. The existing evidence of the corner is in the form of two posts, 16 feet apart, both of which appear to represent the corners of old fences. The westerly of the two posts was found to have fencing cut-off toward the south and the easterly post is in-line with ancient fencing toward the north. Both posts are in-line with evidence of occupation to the east and west in the form of a field division to the west and the edge of a woods to the east. Detailed investigation of the positions of the posts with respect to remote evidence of proximate corners yields the conclusion that the actual corner is between the two posts. Among the supporting evidence to this conclusion is the observation that a calculated point which represents a double-distance position with respect to the corner approximately 1/2 mile east (see BCS corner NE-700-450) and evidence of the 1/8 corner approximately 1/4 mile of the subject corner, in the form of a found wood corner post with fencing cut-off in all four cardinal directions, would place the theoretical corner approximately 5 feet east of the midpoint between the two posts near the subject corner. A similar computation with respect to the corner approximately 1/2 mile west of the subject corner (see BCS corner NE 700-350) and various evidence of the corner approximately 1/4 mile west of the subject corner, including a found rebar, a post on the east edge of County Road 375 East and ties from a BCS tie card dated June 24, 1975, place the theoretical position for the corner either at the midpoint between the posts or up to 4 feet west thereof. A line extended from the corners 1 mile south and 1/2 mile south, respectively, (see BCS Corners NE 600-400 and NE 650-400) also falls between the posts, slightly west of the midpoint between the posts. Also, testimony from the adjacent property owner, Marcus Wiley, who's family has lived and farmed in this immediate vicinity since 1834, states that family history reports that a north-south lane once ran north from this corner. Given that the posts are almost one rod apart, a one-rod wide lane would explain why the fence end posts are either side of the most likely position for the corner. Minor excavation and probing revealed no further evidence of the corner in the form of a stone or other similar evidence. The preponderance of evidence clearly indicates that the corner falls between the two found end posts and the corner was established at the midpoint between the posts. Due to the presence of a mulberry tree immediately north of the corner (tree cut down, but stump remaining), no Harrison monument was set and the rebar described above was set to mark the corner. This corner was originally established as a wood post in 1822.



*Kenneth E. Hedge*  
 Kenneth E. Hedge, County Surveyor

*James S. Swift*  
 James S. Swift, IN LS 20200054  
 January 30, 2019

Clinton Township

Section 27 T20N, R1E	Section 26 T20N, R1E
Section 34 T20N, R1E	Section 35 T20N, R1E