

# SECTION CORNER RECORD

## BOONE COUNTY SURVEYOR'S OFFICE

NW 000-800

State Plane grid coordinates NAD83 (2011):

Corner 1: North: 1745547.30 East: 3082530.02 (U.S. survey feet)

Corner 2: North: 1745547.23 East: 3082574.74 (U.S. survey feet)

Type of monuments: INDOT Type B monument

Depth: flush

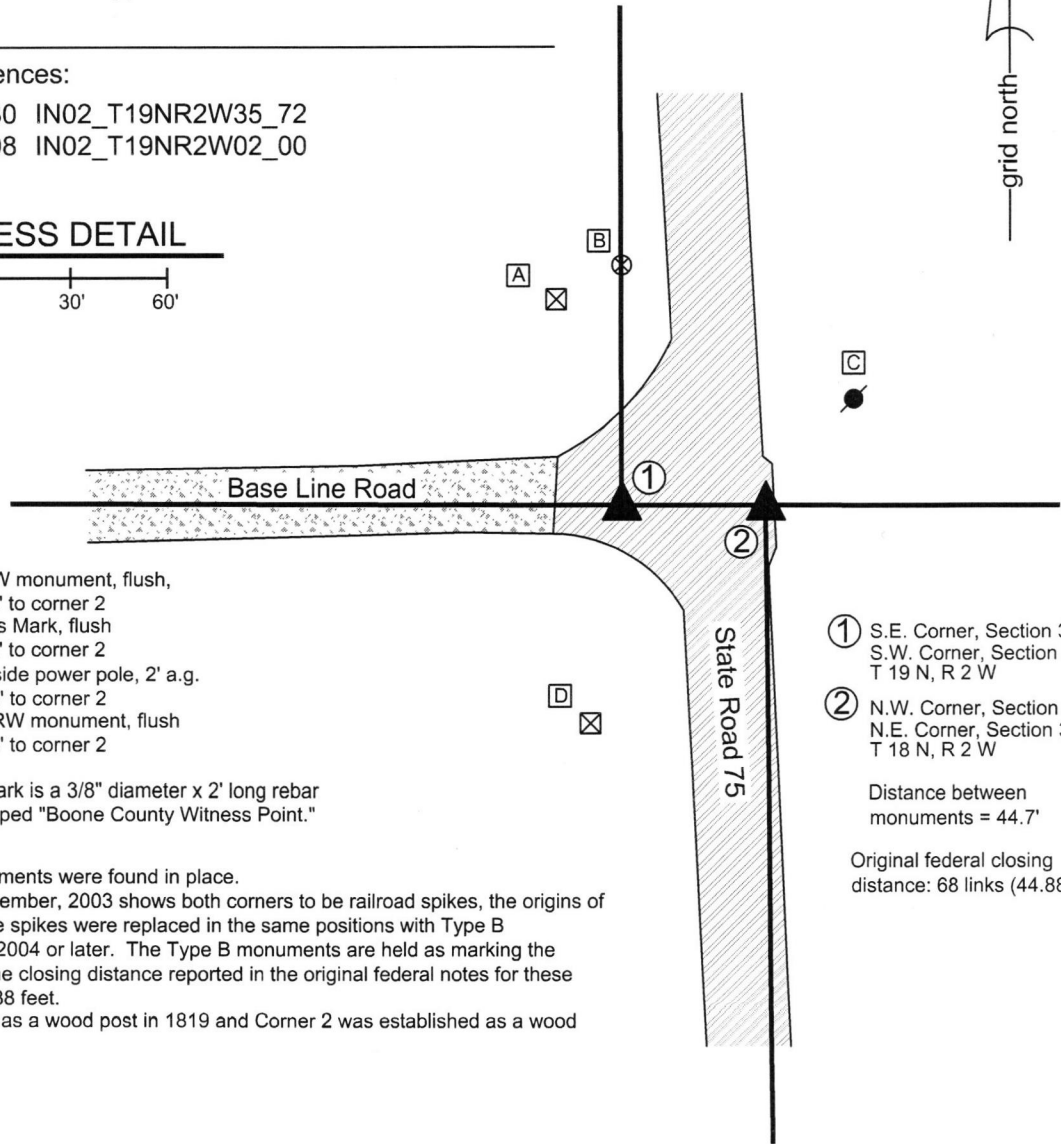
Indiana tie card references:

IN02\_T19NR2W34\_80 IN02\_T19NR2W35\_72

IN02\_T18NR2W03\_08 IN02\_T19NR2W02\_00

### CORNER WITNESS DETAIL

SCALE 1" = 60'



- A - S.E. corner INDOT RW monument, flush,  
62.8' to corner 1, 86.5' to corner 2
- B - Boone County Witness Mark, flush  
74.3' to corner 1, 86.8' to corner 2
- C - Mag Nail set in S.W. side power pole, 2' a.g.  
76.9' to corner 1, 40.3' to corner 2
- D - N.W. corner, INDOT RW monument, flush  
65.5' to corner 1, 83.0' to corner 2

Boone County witness mark is a 3/8" diameter x 2' long rebar bearing a metal cap stamped "Boone County Witness Point."

The INDOT Type B monuments were found in place.

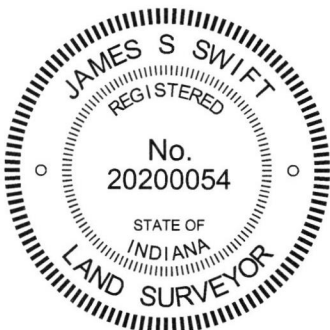
A BCS tie card dated December, 2003 shows both corners to be railroad spikes, the origins of which are not known. The spikes were replaced in the same positions with Type B monuments by INDOT in 2004 or later. The Type B monuments are held as marking the corners. It is noted that the closing distance reported in the original federal notes for these corners is 68 links, or 44.88 feet.

Corner 1 was established as a wood post in 1819 and Corner 2 was established as a wood post in 1820.

- ① S.E. Corner, Section 34  
S.W. Corner, Section 35  
T 19 N, R 2 W
- ② N.W. Corner, Section 2  
N.E. Corner, Section 3  
T 18 N, R 2 W

Distance between monuments = 44.7'

Original federal closing distance: 68 links (44.88')



*Kenneth E. Hedge*  
Kenneth E. Hedge, County Surveyor

*James S. Swift*  
James S. Swift, IN LS 20200054  
March 23, 2017

Jefferson Township

|                         |                         |
|-------------------------|-------------------------|
| Section 34<br>T19N, R2W | Section 35<br>T19N, R2W |
| Section 3<br>T18N, R2W  | Section 2<br>T18N, R2W  |

# SECTION CORNER RECORD

NW 000-850

## BOONE COUNTY SURVEYOR'S OFFICE

State Plane grid coordinates NAD83 (2011):

Corner 1: North: 1745549.01 East: 3079881.76 (U.S. survey feet)

Corner 2: North: 1745548.99 East: 3079913.40 (U.S. survey feet)

Type of monument: Harrison, 4" disk 'Section Corner'

Depth: six inches below adjacent gravel road surface

Indiana tie card references:

IN02\_T19NR2W34\_76 IN02\_T18NR2W03\_04

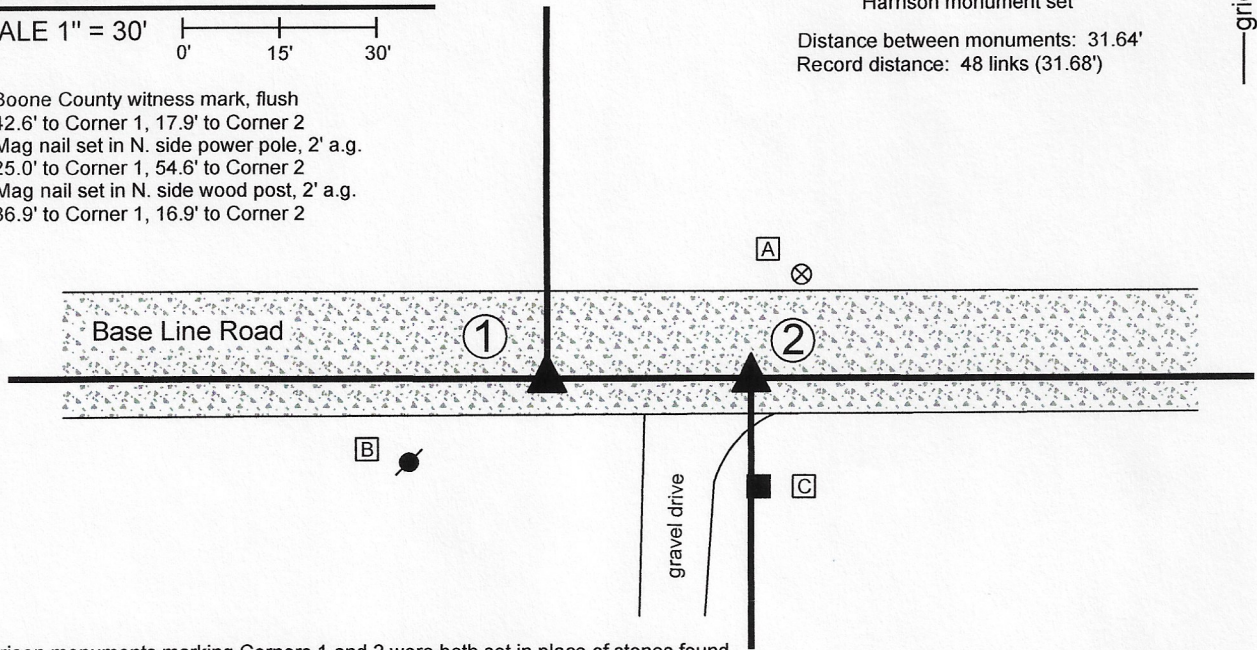
### CORNER WITNESS DETAIL

SCALE 1" = 30'  
0' 15' 30'

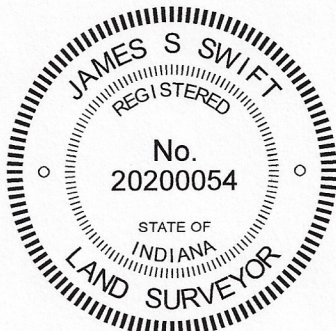
- A - Boone County witness mark, flush  
42.6' to Corner 1, 17.9' to Corner 2
- B - Mag nail set in N. side power pole, 2' a.g.  
25.0' to Corner 1, 54.6' to Corner 2
- C - Mag nail set in N. side wood post, 2' a.g.  
36.9' to Corner 1, 16.9' to Corner 2

- ① South Quarter Corner  
Section 34, T 19 N, R 2 W  
Harrison monument set
- ② North Quarter Corner  
Section 3, T 18 N, R 2 W  
Harrison monument set

Distance between monuments: 31.64'  
Record distance: 48 links (31.68')



The Harrison monuments marking Corners 1 and 2 were both set in place of stones found. A BCS record of November 2-3, 1865, referencing Corner 1, states "Reestablished by measurement. Set Rock 14, 10, 6 marked + on N. side and an oak stake under it." A BCS record of November 3, 1865, referencing Corner 2, states "Est 48 links E. of quar. sec. cor. N. side of line. Set a rock 14,8,7 marked + on top. Walnut stake under it." A BCS tie card dated October 16, 1969 shows both corners with the caption, "No stone - R/R Rail set." These corners were excavated February 10, 2020 and again on June 5, 2020. In February, the railroad rails shown on the 1969 tie card were found but no other evidence was found. Due to winter road conditions, the area of excavation was kept limited. The rails were removed at that time and replaced with railroad spikes. Further, more extensive, excavation in June revealed both stones called for in the 1865 record. Both stones were found as described, in good condition, evidently undisturbed, at the recorded distance separation of 48 links. The stone at Corner 1 was found to be 14 inches tall by 10 inches E-W by 6 inches N-S with a distinct high point and an etched "+" mark on the north side. The stone at Corner 2 was found to be 14 inches tall by 8 inches N-S by 7 inches E-W with an etched "+" mark on the top. The rail shown on the 1969 tie card as marking Corner 1 had been 4.3 feet north and 6.2 feet west of the stone found marking that corner. The rail shown on the 1969 tie card as marking Corner 2 had been 3.3 feet north and 1.1 feet east of the stone found marking that corner. It is noted that the rails were substantially further apart than the average federal closing distance of 48 links and that the two rails also did not fall along a common east-west line with respect to other monuments. It is also noted that the found stones fall close to a straight line between the standard corners to the east and west. The rails were removed in February, 2020, the railroad spikes marking those positions were removed in June, 2020 and the stones were both removed and replaced with Harrison monuments in June, 2020. Corner 1 was originally established as a wood post in 1819. Corner 2 is not an original federal corner.



*Kenneth E. Hedge*  
Kenneth E. Hedge, County Surveyor

*James S. Swift*  
James S. Swift, IN LS 20200054  
June 17, 2020

Jefferson Township

Section 34  
T19N, R2W

Section 3  
T18N, R2W

# SECTION CORNER RECORD

# NW 000-900

## BOONE COUNTY SURVEYOR'S OFFICE

State Plane grid coordinates NAD83 (2011):

Corner 1: North: 1745551.17 East: 3077233.44 (U.S. survey feet)

Corner 2: North: 1745551.16 East: 3077250.84 (U.S. survey feet)

Type of monument: Harrison, 4" disk 'Section Corner'

Depth: Six inches below adjacent road surface

Indiana tie card references:

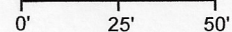
IN02\_T19NR2W34\_72 IN02\_T19NR2W33\_80

IN02\_T18NR2W04\_08 IN02\_T18NR2W03\_00

- A - Boone County witness mark, flush, 23.7' to Corner 1, 17.0' to Corner 2
- B - Boone County witness mark, flush, 31.5' to Corner 1, 47.0' to Corner 2
- C - Mag nail set in N. side pwp, 2' a.g., 125.3' to Corner 1, 142.7' to Corner 2
- D - Mag nail set in N. side pwp, 2' a.g., 127.8' to Corner 1, 110.8' to Corner 2

### CORNER WITNESS DETAIL

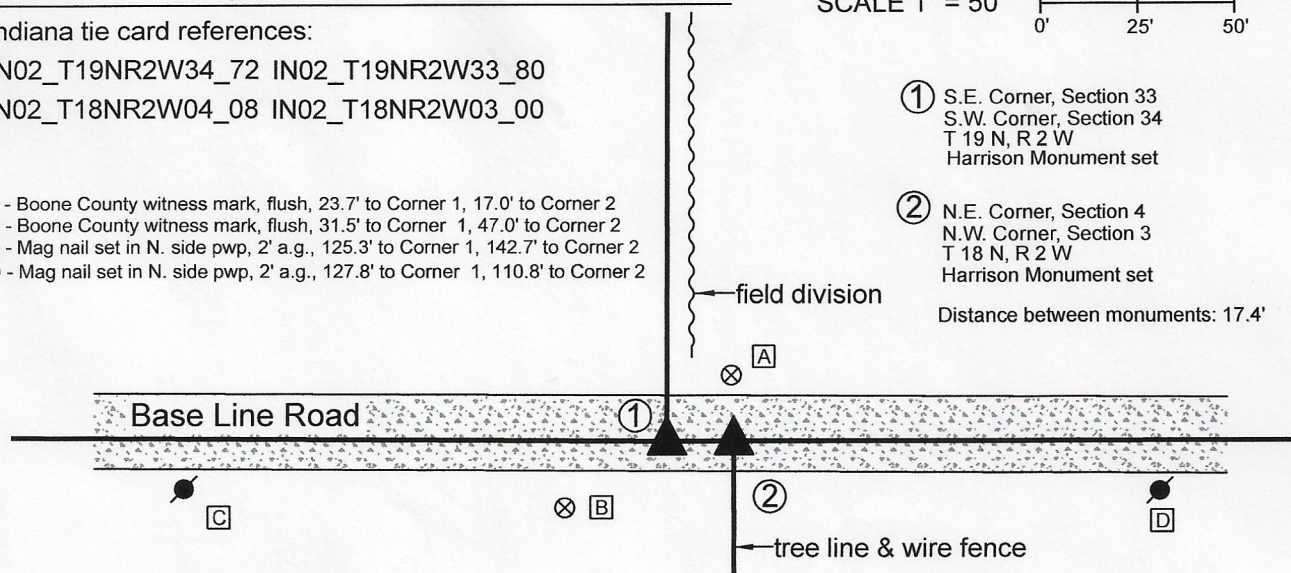
SCALE 1" = 50'



① S.E. Corner, Section 33  
S.W. Corner, Section 34  
T 19 N, R 2 W  
Harrison Monument set

② N.E. Corner, Section 4  
N.W. Corner, Section 3  
T 18 N, R 2 W  
Harrison Monument set

Distance between monuments: 17.4'



The Harrison Monument at Corner 1 was set in place of a stone found.

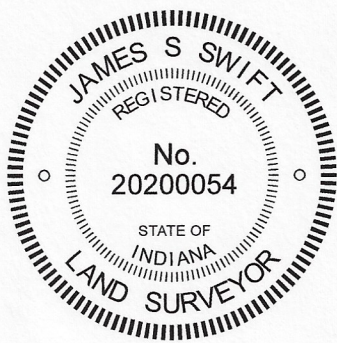
A BCS Record dated November 2-3, 1865 states, with respect to Corner 1, "Reestablished from trees. Set a Rock 20.13.3 + and an oak stake under it.

A BCS record dated October 22 and November 2, 1869 states, with respect to Corner 2, "Reest. from trees. Set a rock 9.7.4 1/2. Oak stake under it."

A BCS tie card dated August 30, 1968 states, with respect to Corner 1, "(No stone)." A BCS tie card dated October 16, 1969 states, with respect to Corner 2, "(No stone) Set RRR."

This set of corners was excavated on January 14, 2020. Prior to excavation, a 5/8 inch diameter rebar was found providing evidence of Corner 2. No metal survey monument was found providing evidence of Corner 1. It is noted that the original federal closing distance at these corners was 28 links, or 18.5 feet. The found rebar fit reasonably well with local evidence of Corner 2, in the form of the center of the east-west road and the northerly prolongation of a fence to the south. A position 28 links west of the rebar fit approximately with the southerly prolongation of a fence existing from 1/4 to 1/2 mile north, but was well west of the north-south field division on the north side of the county road. Excavation at the estimated position of Corner 1 revealed a stone found at 11 inches deep. The stone was vertical and oriented in cardinal directions, measuring 18 inches tall by 9 inches north-south by 8 inches E-W, but did not match the description of the stone in the 1865 record. The stone was embedded in the clay layer below the road bed and clearly appeared to have been set to mark the corner. Excavation in the vicinity of the 5/8 inch rebar revealed the a stone found at 15 inches, clearly leaning toward the east. As stood up, the stone measured 12 inches tall by 9 inches N-S by 4 1/2 inches E-W. The stones were in similar positions in the north-south dimension, being slightly south of the apparent center of the roadway, and were separated by 17.4 feet in the east-west dimension, approximately 1 foot less than the reported federal offset of 18 links. Although the BCS tie cards for both corners call for railroad rails, no such monuments were found. Evidence of disturbance of the road bed and clay layer below the road bed indicate that the rail at Corner 2 may have been approximately 2 feet north of the stone found at that corner. The rebar, removed during excavation, had been 2.9 feet north of the top, center of the stone. The stones were accepted as the best available evidence of the respective corners. Both stones were removed. A Harrison monument was set in place of the top, center of the stone found marking Corner 1 on January 14, 2020. A Harrison monument was set at Corner 2, on the township line, 17.4 feet east of Corner 1, on June 22, 2020. This position agrees with the east-west position of the stone found at Corner 2, as stood up, and is close to the south edge of that stone, as originally found.

Corner 1 was originally established as a wood post in 1819. Corner 2 was originally established as a wood post in 1820.



*Kenneth E. Hedge*  
Kenneth E. Hedge, County Surveyor

*James S. Swift*  
James S. Swift, IN LS 20200054  
June 30, 2020

Jefferson Township

|                         |                         |
|-------------------------|-------------------------|
| Section 33<br>T19N, R2W | Section 34<br>T19N, R2W |
| Section 4<br>T18N, R2W  | Section 3<br>T18N, R2W  |

# SECTION CORNER RECORD

NW 050-800

## BOONE COUNTY SURVEYOR'S OFFICE

State Plane grid coordinates NAD83 (2011):

North: 1748194.09 East: 3082530.02 (U.S. survey feet)

Type of monument: INDOT Type B monument

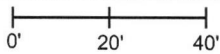
Depth: Flush with adjacent road surface

Indiana tie card references:

IN02\_T19NR2W34\_44 IN02\_T19R2W35\_36

### CORNER WITNESS DETAIL

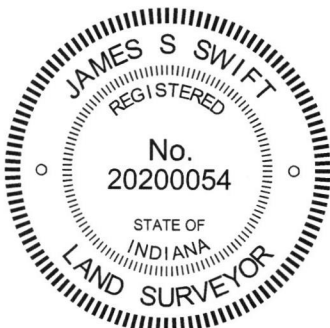
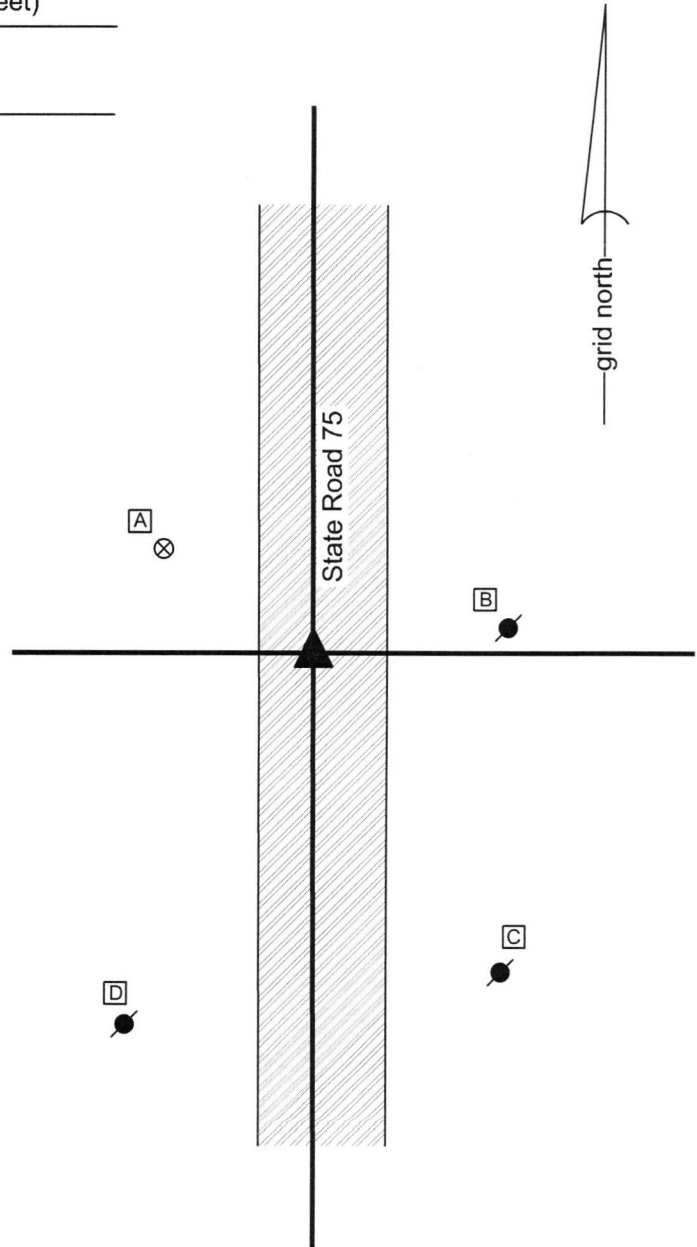
SCALE 1" = 40'



- A - Boone County witness mark, flush, 37.9'
- B - Mag nail set in W. side power pole, 0.5' a.g., 39.0'
- C - Mag nail set in N.W. side power pole, 2' a.g., 75.3'
- D - Mag nail set in N.E. side power pole, 2' a.g., 84.8'

Boone County witness mark is a 3/8" diameter x 2' long rebar bearing a metal cap stamped "Boone County Witness Point."

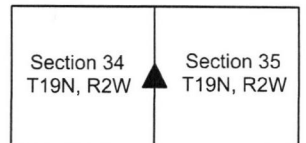
The INDOT Type B monument was found in place. A BCS tie card dated June 20, 1982 shows the corner to be a PK Nail. A BCS tie card dated December, 2003 shows the corner to be a Type C monument. The found monument is believed to be the same monument shown on this document, being a Type B, not Type C, monument per INDOT standards. The origin of the monument is not known. Excavation was not performed at this corner as it is located within a state highway. The Type B monument was held as marking the corner. This corner was originally established as a wood post in 1822.



*Kenneth E. Hedge*  
Kenneth E. Hedge, County Surveyor

*James S. Swift*  
James S. Swift, IN LS 20200054  
March 23, 2017

Jefferson Township



# SECTION CORNER RECORD

## BOONE COUNTY SURVEYOR'S OFFICE

NW 050-900

State Plane grid coordinates NAD83 (2011):  
 North: 1748189.77 East: 3077231.97 (U.S. survey feet)

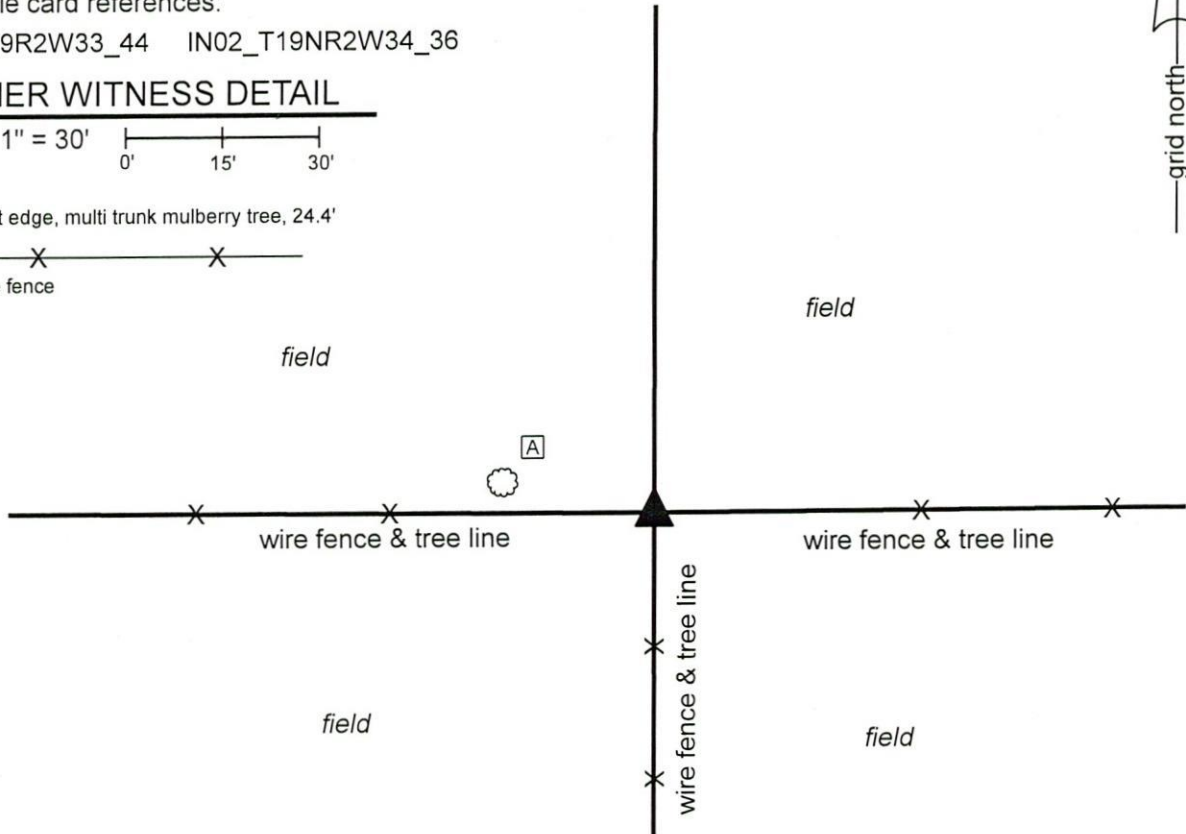
Type of monument: Harrison, 4" disk 'Section Corner'  
 Depth: three inches above adjacent ground

Indiana tie card references:  
 IN02\_T19R2W33\_44 IN02\_T19NR2W34\_36

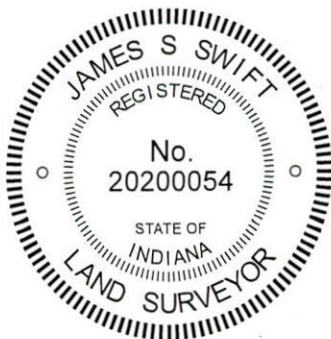
### CORNER WITNESS DETAIL

SCALE 1" = 30'  
 0' 15' 30'

A - east edge, multi trunk mulberry tree, 24.4'  
 - Wire fence



The Harrison monument was set in place of a stone found.  
 A BCS record dated November 2-3, 1865 states, with respect to this corner, "Reestablished from trees. Set rock 14,7,2 1/2 marked + on E. side." No recent BCS tie cards were found referencing this corner, nor is the corner referenced in recorded surveys.  
 Excavation was performed at this corner on December 4-5, 2020. Prior to excavation, no metal monument was found. A metal post and fragments of a wood post were found buried within a large pile of brush and tree limbs. Excavation in the vicinity of the two posts revealed the stone described in the 1865 record at 12 inches deep. The stone was found to be vertical and oriented in cardinal directions, being 14 inches N-S by 2 1/2 inches E-W by 7 inches tall. The stone, as found, appeared to be undisturbed and the position of the stone fit well with evidence of proximate corners to the south, east and west. The stone was removed and an etched "+" mark was observed on the east side, toward the bottom, southerly corner of the stone. The stone was held as marking the corner and a Harrison monument was set in place of the top, center of the stone.  
 This corner was originally established as a wood post in 1822.



*Kenneth E. Hedge*  
 Kenneth E. Hedge, County Surveyor

*James S. Swift*  
 James S. Swift, IN LS 20200054  
 January 8, 2020

Jefferson Township

|                         |                         |
|-------------------------|-------------------------|
| Section 33<br>T19N, R2W | Section 34<br>T19N, R2W |
|-------------------------|-------------------------|

# SECTION CORNER RECORD

## BOONE COUNTY SURVEYOR'S OFFICE

NW 100-800

State Plane grid coordinates NAD83 (2011):

North: 1750841.63 East: 3082517.70 (U.S. survey feet)

Type of monument: plug in monument box, INDOT Type B

Depth: Flush with adjacent road surface

Indiana tie card references:

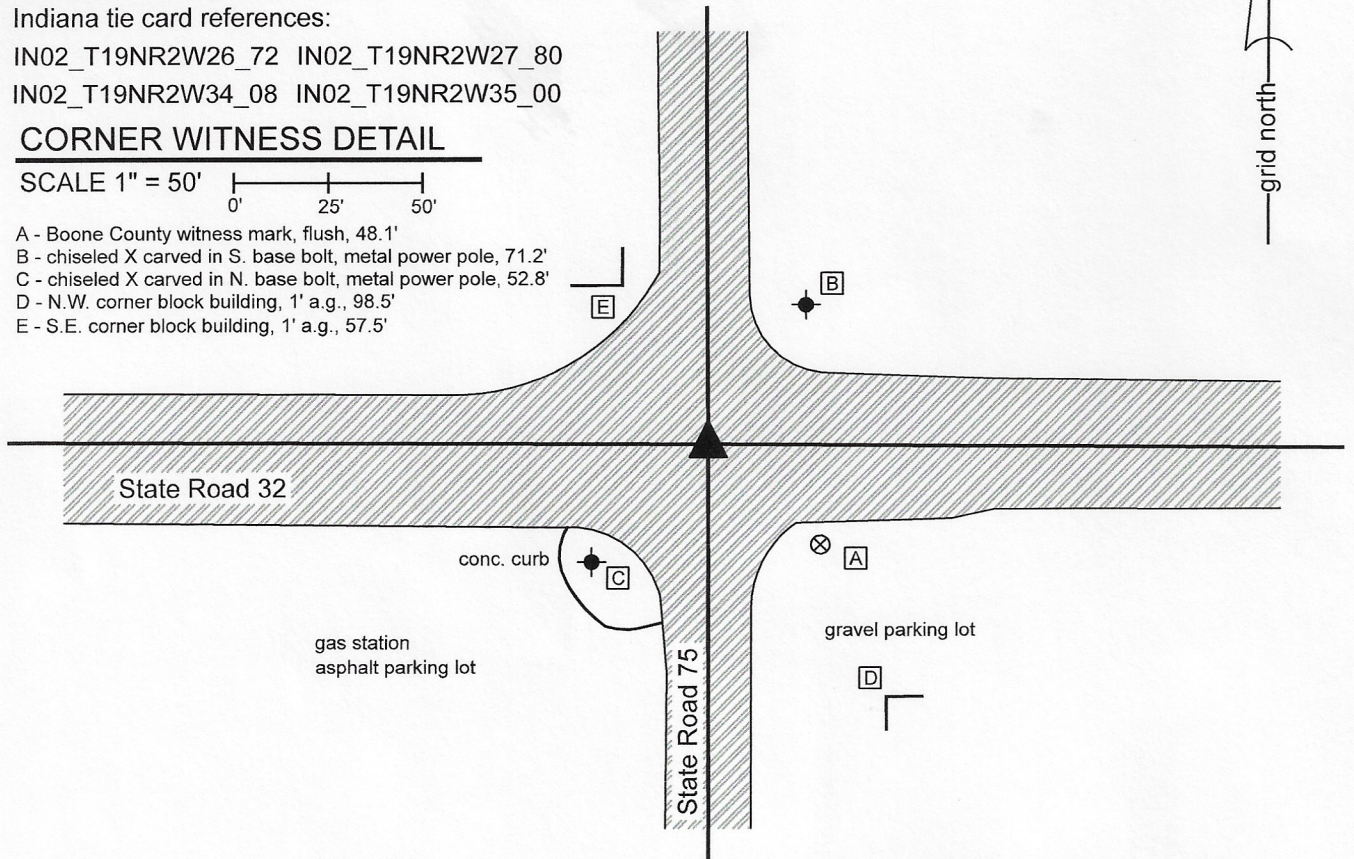
IN02\_T19NR2W26\_72 IN02\_T19NR2W27\_80

IN02\_T19NR2W34\_08 IN02\_T19NR2W35\_00

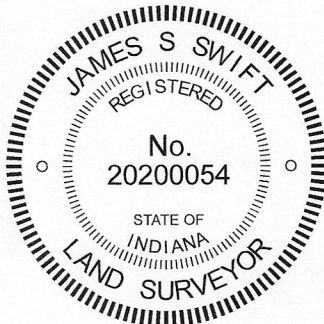
### CORNER WITNESS DETAIL

SCALE 1" = 50'

- A - Boone County witness mark, flush, 48.1'
- B - chiseled X carved in S. base bolt, metal power pole, 71.2'
- C - chiseled X carved in N. base bolt, metal power pole, 52.8'
- D - N.W. corner block building, 1' a.g., 98.5'
- E - S.E. corner block building, 1' a.g., 57.5'



The Type B monument was found in place and held as marking the corner. A BCS record of September 12, 1912 states, with respect to this corner, "Stone in crossing long recognized as corner." A BCS tie card dated June 30, 1982 shows the corner as a bolt in the center of the intersection of the two state roads. A BCS tie card dated August 4, 1995 shows the corner with ties but does not reference a specific monument. A tie card which is believed to have been supplied by INDOT, dated November 10, 1998, shows the corner as an Iron Rod in Pod. BCS tie cards of July 30, 1996 and December, 2003 show the corner as a Type C monument. A Survey Monument Replacement Surveyor's Report recorded as Instrument 200700005107 in the Office of the Boone County Recorder states that a new Type B monument was set following resurfacing operations, between May 2006 and May, 2007. The report indicates that the new monument was set 0.07 foot northeast of the previous monument. The ties that remain from the various tie cards, including ties to the corners of the two block buildings shown on this drawing, match the distances measured in the field within 0.1 foot. The Type B monument is held as the corner in the current position, with uncertainties of approximately 0.1 foot in all directions. This corner was originally established as a wood post in 1822.



*Kenneth E. Hedge*  
 Kenneth E. Hedge, County Surveyor

*James S. Swift*  
 James S. Swift, IN LS 20200054  
 May 11, 2020

Jefferson Township

|                         |                         |
|-------------------------|-------------------------|
| Section 27<br>T19N, R2W | Section 26<br>T19N, R2W |
| Section 34<br>T19N, R2W | Section 35<br>T19N, R2W |

# SECTION CORNER RECORD

## BOONE COUNTY SURVEYOR'S OFFICE

NW 100-850

State Plane grid coordinates NAD83 (2011):

North: 1750846.99 East: 3079870.15 (U.S. survey feet)

Type of monument: Mag nail with 'Boone County Surveyor' washer

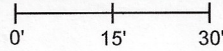
Depth: Flush with adjacent road surface

Indiana tie card references:

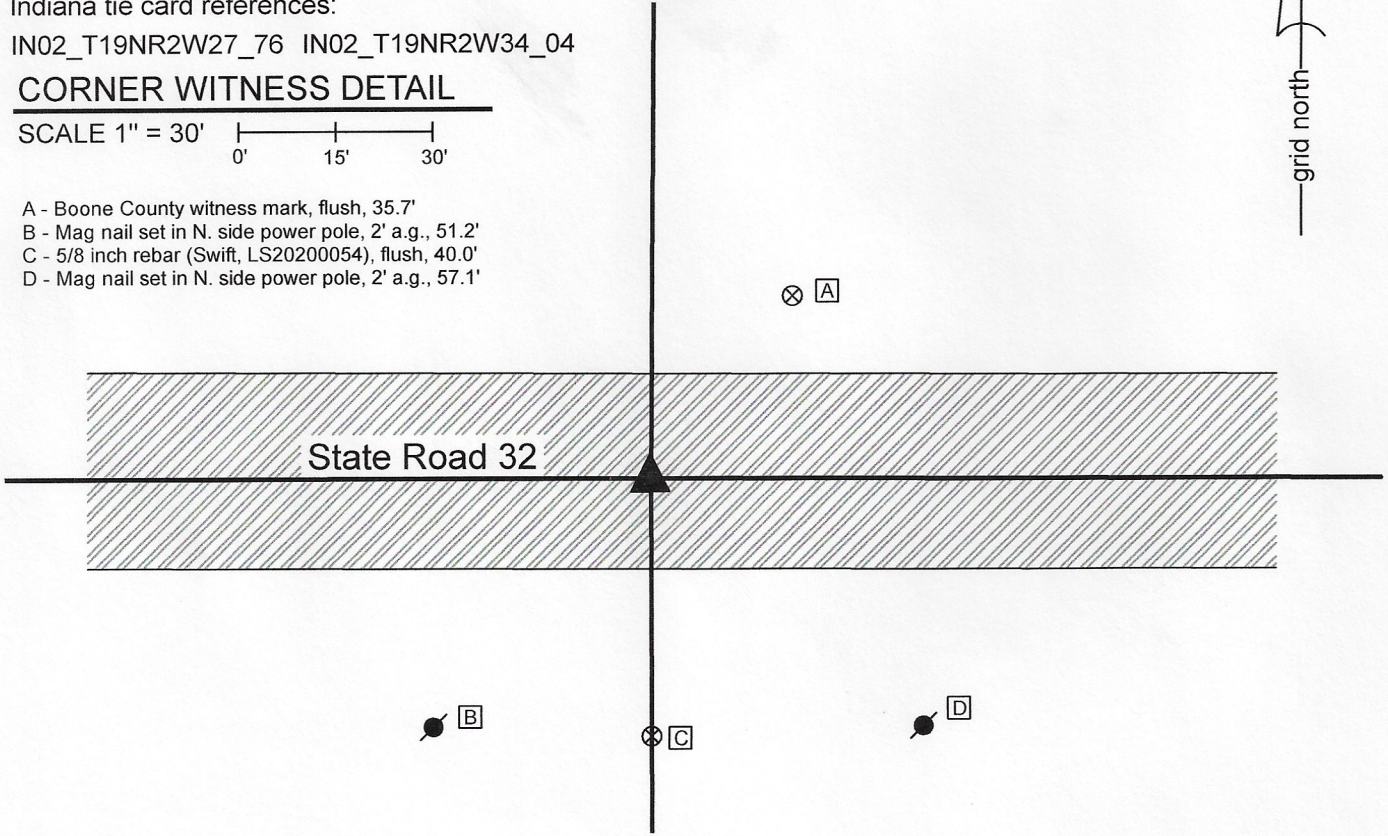
IN02\_T19NR2W27\_76 IN02\_T19NR2W34\_04

### CORNER WITNESS DETAIL

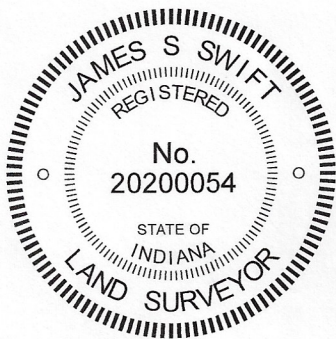
SCALE 1" = 30'



- A - Boone County witness mark, flush, 35.7'
- B - Mag nail set in N. side power pole, 2' a.g., 51.2'
- C - 5/8 inch rebar (Swift, LS20200054), flush, 40.0'
- D - Mag nail set in N. side power pole, 2' a.g., 57.1'



The mag nail was set at a computed position.  
 No specific descriptions of this corner were found in the Boone County Surveyor's Record beyond the original establishment of the corner as a wood post in 1822. No recent BCS tie cards were found referencing this corner.  
 The corner is shown as a railroad spike on surveys by Jerry L. Carter, LS S0350, on surveys recorded as Instruments 0209856 and 0217196 in the Office of the Boone County Surveyor. The position of the railroad spike was computed with respect to the relative positions of other monuments shown on said surveys and found marking corners in State Road 75. Uncertainties with respect to this computed position are approximately 0.5 foot in all directions. The position established per the surveys falls in the approximate center of State Road 32, immediately north of a wood end post. It is noted that the corner falls slightly east of the end post as it is currently placed but the post appears to have been moved recently, with most of the portion of the base which was clearly previously underground being well above ground. No railroad spike or other monument was found marking the corner. The position computed with respect to the Carter surveys was held and a Mag nail with washer stamped 'Boone County Surveyor' was set at this position on June 17, 2020.



*Kenneth E. Hedge*  
 Kenneth E. Hedge, County Surveyor

*James S. Swift*  
 James S. Swift, IN LS 20200054  
 August 5, 2020

Jefferson Township

