

SECTION CORNER RECORD

NW 000-300

BOONE COUNTY SURVEYOR'S OFFICE

State Plane grid coordinates NAD83 (2011):

North: 1745549.76 East: 3108954.57 (U.S. survey feet)

North: 1745549.47 East: 3108878.67 (U.S. survey feet)

Type and depth of monument

Corner 1: Harrison 4" disk 'Section Corner', flush with adjacent ground

Corner 2: 5/8" rebar with metal cap 'Boone County Surveyor' 14 inches deep

Indiana tie card references:

IN02_T19NR1W33_80 IN02_T19NR1W34_72

IN02_T18NR1W04_08 IN02_T18NR1W03_00

CORNER WITNESS DETAIL

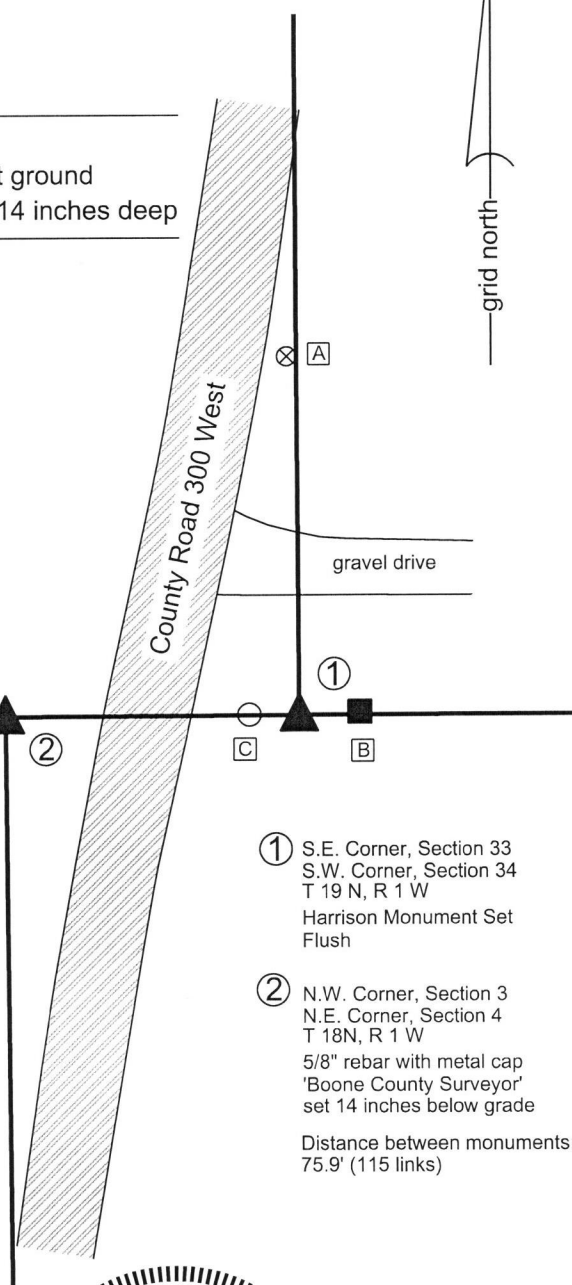
SCALE 1" = 50'

A - Boone County witness mark, flush,
93.0' to Corner 1, 118.4' to Corner 2

B - Mag nail set in W. side power pole, 1' a.g.,
13.1' to Corner 1, 89.0' to Corner 2

C - East edge plastic underground cable marker, flush,
13.0' to Corner 1, 62.9' to Corner 2

Boone County witness mark is a 3/8" diameter x 2' long rebar bearing a metal cap stamped "Boone County Witness Point."



The Harrison monument at Corner 1 was set over a vertical section of railroad rail found. This corner was monumented in 2016 and shown on a record of March 23, 2017. The position of Corner 2 was established at 115 links (75.9 feet) from Corner 1 along a line between the southeast and southwest corners of section 33. (See BCS Corner NW 000-400 as well as NW 000-350).

A BCS record of March 17, 1894 states, with respect to Corner 1, "Reestablished. Set Rock + 14.14.5 + at corner. Set Rock + 3.9.7 underneath. Brick bat + underneath. Old ax under all. All packed with brick bats, small rocks, an old ax and pieces of iron & crockery." No specific descriptions of Corner 2 were found in the entries of the BCS Surveyor's Record. A BCS tie card dated September 30 and October 4, 1971 shows Corner 1 as "Stone Found - 9/30/71- RRR Put in" and shows Corner 2 as "No Stone - RRR put in - 10/4/71." This tie card shows the corners 66.7 feet apart, 9.2 feet less than the original record offset. Another tie card, dated June 27, 1994, shows Corner 1 as a railroad rail found.

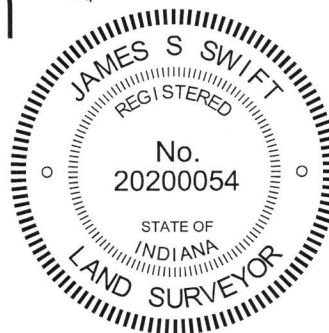
The railroad rail at Corner 1 was found in 2016. The rail was accepted as marking the corner, presuming the stone found in 1971 was one of the monuments described in the 1894 record. The top of the rail was five inches below grade, as found. The rail was left in place with two 24" lengths of 3/8 inch diameter rebar driven at angles adjacent to the rail. The top 8 inches of the rail and the tops of both rebars were encased in concrete and a Harrison monument was set over the top, center of the rail. A survey by Jerry L. Carter, IN LS #S0350 recorded as Instrument 0107644 in the Office of the Boone County Recorder shows Corner 2 at 75.9 feet west of Corner 1, in agreement with the original federal notes which state that Corner 2 is 115 links west of Corner 1. The descriptions of the adjoining land match the survey (see I200900008570). This position falls in a tilled field but fits well with the center of County Road 300 West to the south. A 2 foot length of 5/8 inch rebar was found bent and severely disturbed in the immediate vicinity of Corner 2. The railroad rail (RRR) called in the 1971 tie card was not found at Corner 2 and is believed to have not been present since at least 1989. It is not known why the 1971 tie card established the corners at 66.7 feet apart. No evidence was found to support this position nor were any surveys or deeds found which explicitly hold the position. The federal dimension of 115 links was held, in agreement with the Carter survey and adjoining descriptions. The bent rebar was removed and replaced with a 30 inch length of 5/8 inch diameter rebar with metal cap stamped 'Boone County Surveyor' set at 14 inches below the top of the tilled field on May 31, 2019.

Corner 1 was originally established as a wood post in 1819. Corner 2 was originally established as a wood post in 1820.

① S.E. Corner, Section 33
S.W. Corner, Section 34
T 19 N, R 1 W
Harrison Monument Set
Flush

② N.W. Corner, Section 3
N.E. Corner, Section 4
T 18N, R 1 W
5/8" rebar with metal cap
'Boone County Surveyor'
set 14 inches below grade

Distance between monuments:
75.9' (115 links)



Center Township

Section 33 T19N, R1W	Section 34 T19N, R1W
Section 4 T18N, R1W	Section 3 T18N, R1W

Kenneth E. Hedge, County Surveyor
June 19, 2019

James S. Swift, IN LS 20200054

SECTION CORNER RECORD

BOONE COUNTY SURVEYOR'S OFFICE

NW 050-200

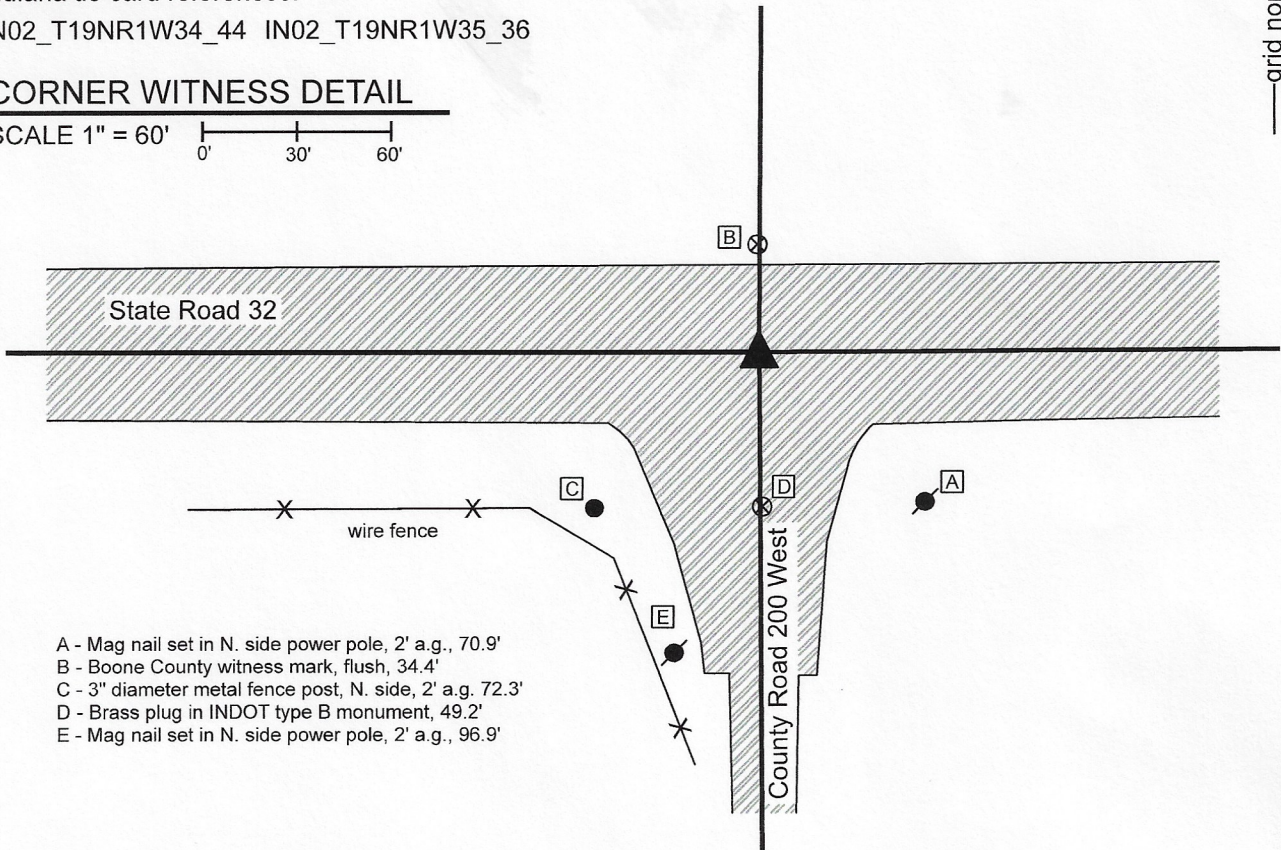
State Plane grid coordinates NAD83 (2011):
 North: 1748199.33 East: 3114216.18 (U.S. survey feet)

Type of monument: plug in monument box, INDOT Type B
 Depth: Flush with adjacent road surface

Indiana tie card references:
 IN02_T19NR1W34_44 IN02_T19NR1W35_36

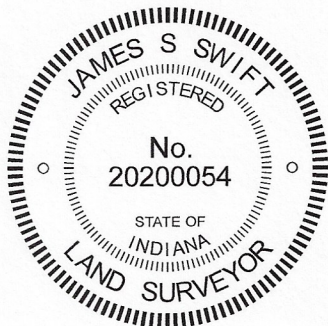
CORNER WITNESS DETAIL

SCALE 1" = 60'



- A - Mag nail set in N. side power pole, 2' a.g., 70.9'
- B - Boone County witness mark, flush, 34.4'
- C - 3" diameter metal fence post, N. side, 2' a.g. 72.3'
- D - Brass plug in INDOT type B monument, 49.2'
- E - Mag nail set in N. side power pole, 2' a.g., 96.9'

The Type B monument was found in place and held as marking the corner.
 A BCS record of October 24, 1868 states, with respect to this corner, "Reest. from stump of Ash. SEt Rock 20x16x4 market + on S. side." A BCS data sheet dated February 10, 1990 shows the corner as a railroad rail 3 inches below the blacktop road surface, referencing a stone found in October, 1968. The tie card from October, 1968 was not found. It is believed most likely that the stone was replaced with the railroad rail at that time. A Road Plans supplied by INDOT, dated October 10, 2003, contract R-26614, shows the corner as "Sec. Corner Mon. Req'd."
 No large scale excavation was performed at this corner as it falls in a state road. The Type B monument was found in place and is believed to match the position of the corner called in the 2003 route survey. It is most likely that this monument is in the same position as the aforementioned stone and railroad rail, though that fact has not been proven. The monument fits with local evidence of the corner, being at the approximate intersection of the two roads. The Type B monument was held as marking the corner as found.
 This corner was originally established as a wood post in 1822.



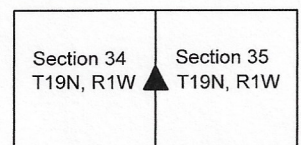
Kenneth E. Hedge

 Kenneth E. Hedge, County Surveyor

James S. Swift

 James S. Swift, IN LS 20200054
 May 11, 2020

Center Township



SECTION CORNER RECORD

NW 050-300

BOONE COUNTY SURVEYOR'S OFFICE

State Plane grid coordinates NAD83 (2011):

North: 1748182.99 East: 3108940.44 (U.S. survey feet)

Type of monument: Harrison, 4" disk 'Section Corner'

Depth: Six inches above adjacent ground

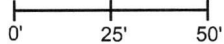
Indiana tie card references:

IN02_T19R1W33_44 IN02_T19NR1W44_36

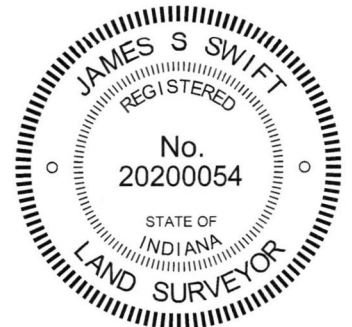
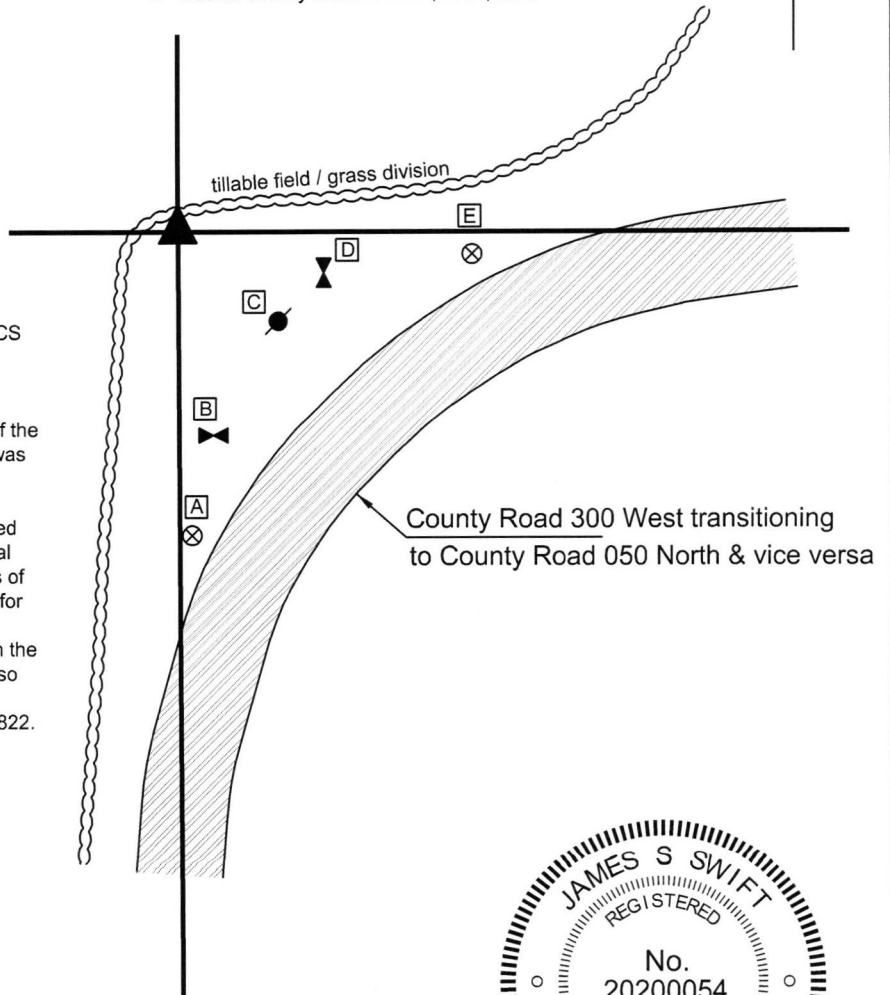
- A - Boone County witness mark, flush, 78.9'
- B - West edge, road sign (arrow pointing East), flush, 53.2'
- C - Mag nail set in N. side power pole, 1' a.g., 33.0'
- D - North edge, road sign (arrow pointing South), flush, 38.2'
- E - Boone County witness mark, flush, 76.5'

CORNER WITNESS DETAIL

SCALE 1" = 50'



The Harrison monument was set over a vertical section of railroad rail found. No specific descriptions of this corner were found in the BCS Surveyor's Record. A BCS tie card dated August 7, 1968 states "Stone Located" with respect to the corner. A section of railroad rail which has long been accepted as marking this corner is believed to have been set in place of the stone as part of the creation of the 1968 record. The rail was accepted as marking the corner. On August 21, 2016, a Harrison monument was set over the rail. After minor excavation around the top of the rail, the rail was hammered into the ground approximately 8 inches, a section of vertical plastic storm pipe was set around the rail and two sections of 5/8 inch rebar were driven along the north edge of the rail for stability. The top 8 inches of the rail and both rebars were anchored in concrete and a Harrison monument was set in the position of the top, center of the rail, as originally found, also anchored in concrete. This corner was originally established as a wood post in 1822.

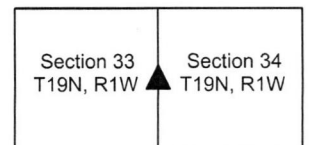


James S. Swift
 James S. Swift, IN LS 20200054

Kenneth E. Hedge
 Kenneth E. Hedge, County Surveyor

March 23, 2017

Center Township



SECTION CORNER RECORD

NW 100-200

BOONE COUNTY SURVEYOR'S OFFICE

State Plane grid coordinates NAD83 (2011):

North: 1750834.15 East: 3114224.09 (U.S. survey feet)

Type of monument: 5/8" rebar with metal cap stamped 'Boone County Surveyor'

Depth: 14 inches below adjacent ground

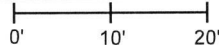
Indiana tie card references:

IN02_T19NR1W27_80 IN02_T19NR1W26_72

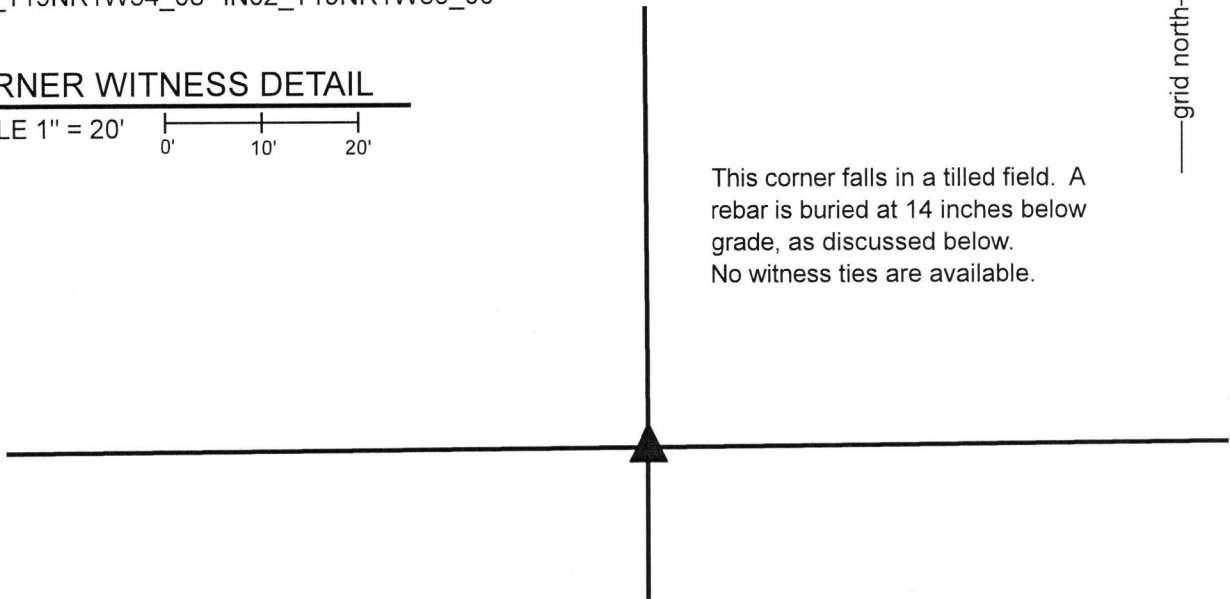
IN02_T19NR1W34_08 IN02_T19NR1W35_00

CORNER WITNESS DETAIL

SCALE 1" = 20'



This corner falls in a tilled field. A rebar is buried at 14 inches below grade, as discussed below. No witness ties are available.



This corner is monumented by a 30 inch length of 5/8 inch rebar, set vertically and buried 14 inches below grade. The rebar has a metal cap stamped 'Boone County Surveyor' affixed to the top. A Harrison monument which was set at this corner in 2017 was destroyed during a fence removal project in the Spring of 2019. The rebar was set on September 25, 2019 in the same horizontal position as Harrison monument occupied previously.

The following narrative is verbatim per the original version of this document, dated January 10, 2018:

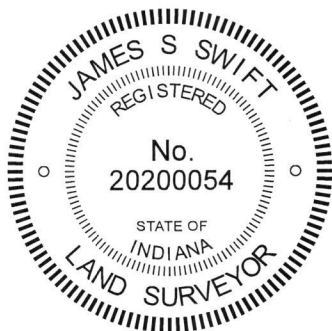
The Harrison monument was set in the position of an ancient wood corner post.

A BCS record of October 4, 1884 states, with respect to this corner, "Reestablished from stumps of both trees. Set Rock 29-16-9." A BCS record of March 11, 1895 states "see C Section 34, marked + the rock." The latter entry refers to the former.

No recent BCS tie cards were found referencing the corner.

This corner was excavated on November 9, 2017. The approximate position of the corner was computed with respect to the relative positions of evidence of the corners 1/2 and 1/4 mile west, respectively. An established east-west occupation line is visible in the form of an ancient fence which is generally not standing, being almost entirely on the ground, and the associated mound of dirt along the fence. Within a few feet of the computed position of the corner, an ancient wood corner post was found lying on the ground with various fencing attached. Substantial manual excavation around the post revealed several rocks and bricks, none of which were found to match the dimensions of the rock called for in the 1884 record. The position of the post was readily evident from its position on the ground, but fragments of the base of the post were minimal, as it appears that the post was of a type of wood prone to rotting underground. However, fragments of wire were found below the ground and the exact position of the corner was established at the point where fragments of underground wire were found extending in all four cardinal directions. A Harrison monument was set at this position.

This corner was originally established as a wood post in 1822.



Kenneth E. Hedge
Kenneth E. Hedge, County Surveyor

James S. Swift
James S. Swift, IN LS 20200054

January 10, 2018, updated December 3, 2019

Center Township

Section 27 T19N, R1W	Section 26 T19N, R1W
Section 34 T19N, R1W	Section 35 T19N, R1W

SECTION CORNER RECORD

NW 100-250

BOONE COUNTY SURVEYOR'S OFFICE

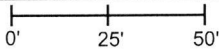
State Plane grid coordinates NAD83 (2011):
North: 1750818.01 East: 3111577.81 (U.S. survey feet)

Type of monument: Harrison, 4" disk 'Section Corner'
Depth: One inch below adjacent ground

Indiana tie card references:
IN02_T19NR1W27_76 IN02_T19NR1W34_04

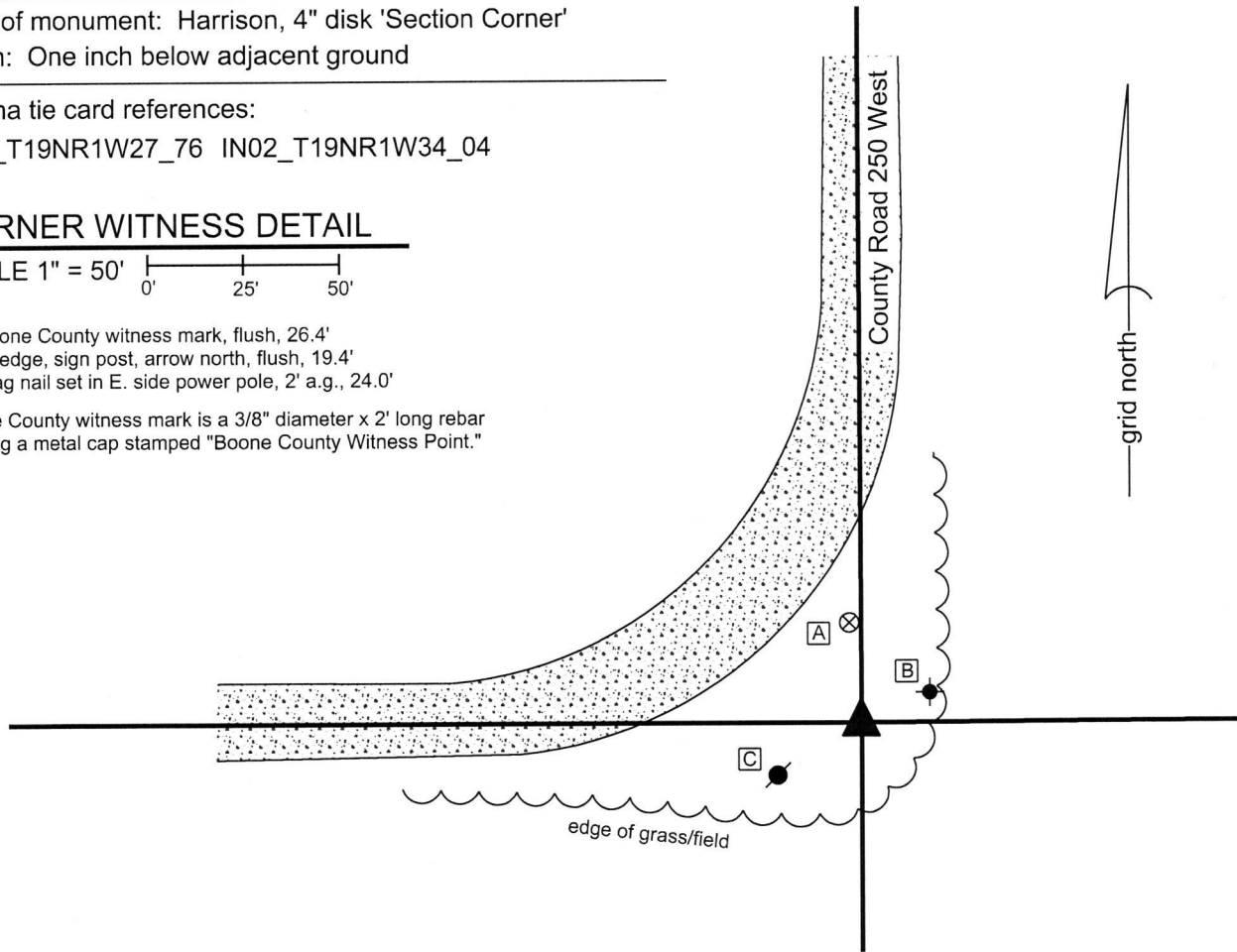
CORNER WITNESS DETAIL

SCALE 1" = 50'



- A - Boone County witness mark, flush, 26.4'
- B - S. edge, sign post, arrow north, flush, 19.4'
- C - Mag nail set in E. side power pole, 2' a.g., 24.0'

Boone County witness mark is a 3/8" diameter x 2' long rebar bearing a metal cap stamped "Boone County Witness Point."



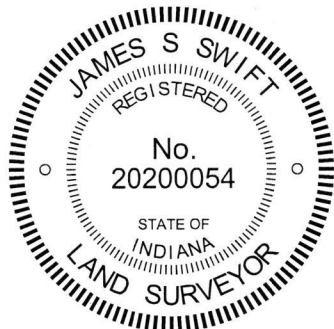
The Harrison monument was set in place of a vertical section of railroad rail found.

A BCS record of May 26, 1874 states, with respect to this corner, "Reestd from stump of the Red Oak. Set Rock 22x20x10 marked +." A BCS tie card dated November 14, 1968 states "no stone." This document does not specifically mention the railroad rail but it is believed most likely that the found rail was set at that time, in association with the creation of the tie card.

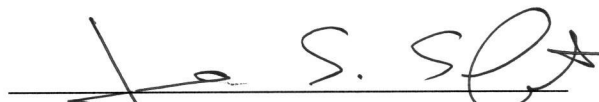
The position of the rail fits well with local evidence of the corner in the form of the existing roadways to the north and west and also fits reasonably well with remote evidence in the form of the prolongation of a standing fence which begins 1/4 mile east of the corner and continues to and beyond the corner 1/2 mile east (see corner NW 100-200).

Substantial excavation was performed at this corner on December 19, 2017. Excavation of an area extending 4 feet east, 4 feet north, 4 feet south and 6 feet west of the rail yielded no further evidence of the corner. Excavation was performed to 18 inches deep minimum, slightly into the clay layer below the soil. It is noted that the elevation of the ground at this corner is slightly below the surrounding fields to the east and south and that the corner is at the north edge of a shallow drainage swale. It is possible that the stone was previously removed during excavation/earthwork in the immediate vicinity of this corner.

The rail was accepted as marking the position of the corner. The rail was removed and replaced with a Harrison monument in the same position. This corner was originally established as a wood post in 1822.




Kenneth E. Hedge, County Surveyor


James S. Swift, IN LS 20200054
February 14, 2018

Center
Township

Section 27
T19N, R1W

Section 34
T19N, R1W