

SECTION CORNER RECORD

BOONE COUNTY SURVEYOR'S OFFICE

SW 550-800

State Plane grid coordinates NAD83 (2011):
 North: 1713606.38 East: 3082729.46 (U.S. survey feet)

Type of monument: INDOT Type B Monument
 Depth: Flush with adjacent road surface

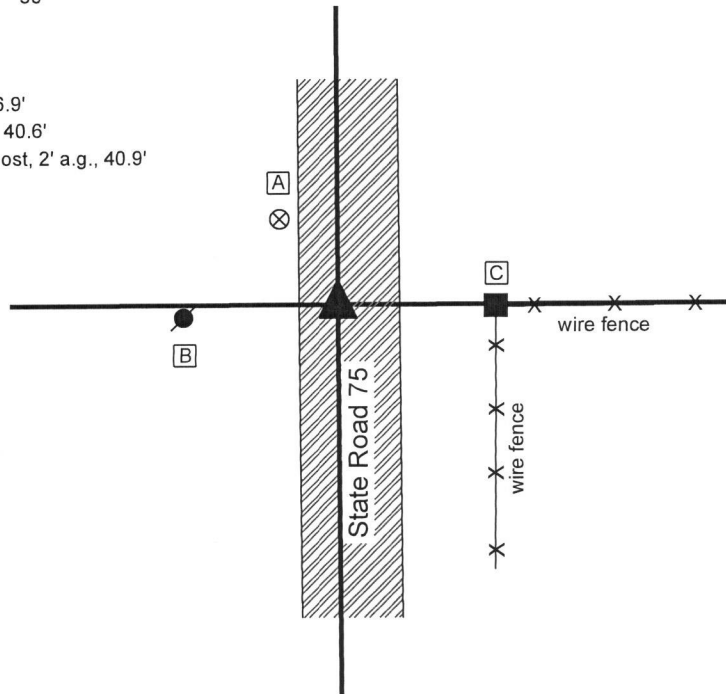
Indiana tie card references:
 IN02_T18NR2W34_44 IN02_T18NR2W35_36

CORNER WITNESS DETAIL

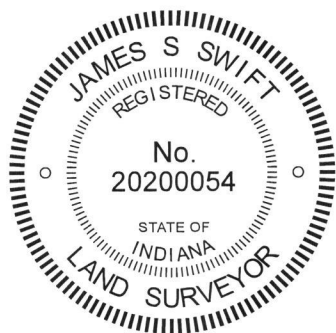
SCALE 1" = 50'



- A - Boone County witness mark, flush, 26.9'
- B - East edge, base of metal power pole, 40.6'
- C - Mag Nail set in N. side wood corner post, 2' a.g., 40.9'



The INDOT Type B monument was found in place.
 A BCS tie card dated December, 2003 shows the corner to be a PK nail/washer. In 2004 or later, INDOT replaced the nail with a Type B monument in the same position. Though the origin of the position of the monument is not known, it fits with local evidence in the the form the the north-south roadway and being in line with the fence to the east. This corner was not excavated, being in a state highway. The Type B monument is held as marking the corner.
 This corner was originally established as a wood post in 1820.



Kenneth E. Hedge
 Kenneth E. Hedge, County Surveyor

James S. Swift
 James S. Swift, IN LS 20200054
 March 13, 2019

Jackson Township

Section 34 T18N, R2W	Section 35 T18N, R2W
-------------------------	-------------------------

SECTION CORNER RECORD

SW 550-900

BOONE COUNTY SURVEYOR'S OFFICE

State Plane grid coordinates NAD83 (2011):

North: 1716231.14 East: 3077377.24 (U.S. survey feet)

Type of monument: Harrison, 4" disk 'Section Corner'

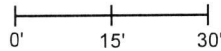
Depth: Six inches below adjacent road surface

Indiana tie card references:

IN02_T18NR2W33_44 IN02_T18NR2W34_36

CORNER WITNESS DETAIL

SCALE 1" = 30'



A - Boone County witness mark, flush, 30.4'

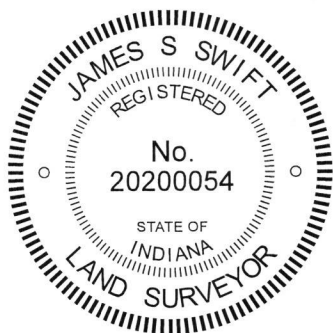
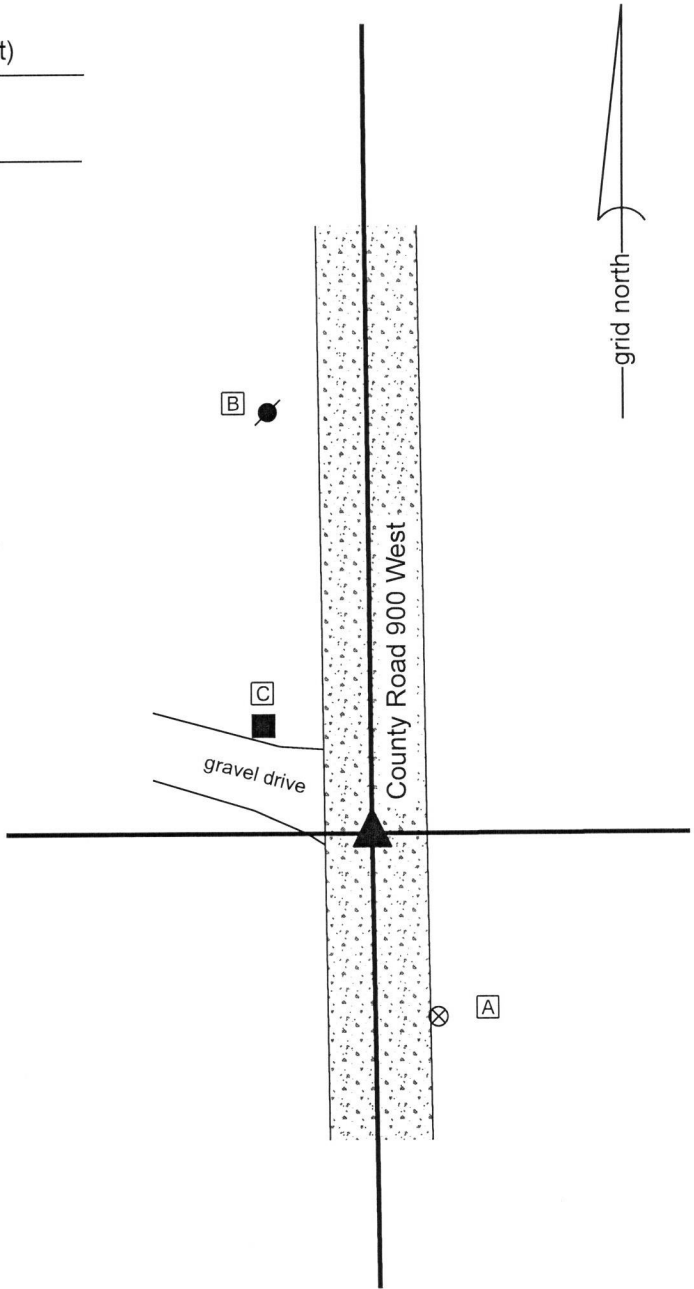
B - Mag nail set in E. side power pole, 2' a.g., 67.5'

C - Mag nail set in E. side wooden post, 2' a.g., 22.6'

The Harrison monument was set in place of a rebar found. No specific descriptions of this corner were found in the BCS Surveyor's Record beyond the original establishment of the corner as a wood post in 1820.

A tie card which appears to be an image of field notes supplied by a private survey company, source not known, shows the corner as "I.P." and states "no stone." The field notes also states "see Job #800104."

This corner was excavated on October 23, 2019. Prior to excavation, a vertical section of 5/8 inch rebar was found in the center of the county road at a position which fit with the two remaining distance tie references shown on the aforementioned field notes. Excavation of an area extending 2.5 feet north, 4 feet east, 4 feet west and 4.5 feet south revealed no further evidence of the corner. It was observed that the road bed is approximately 3 inches thick in this vicinity. The position of the rebar fits well with the relative positions of proximate corners. The field notes / tie card demonstrate that the rebar was found or set in line with fences to the east and west, indicating that the position of the rebar agreed with local evidence of the corner. As of the date of publication of this document, the fence to the east has been removed and the fence to the west is intermittent. The rebar appears to be the same monument referenced in the field notes and did not appear to be disturbed. The rebar was accepted as the best available evidence of the corner. It was removed and replaced with a Harrison monument in the same position on October 23, 2019.



Kenneth E. Hedge
 Kenneth E. Hedge, County Surveyor

James S. Swift
 James S. Swift, IN LS 20200054
 December 11, 2019

Jackson Township	
Section 33 T18N, R2W	Section 34 T18N, R2W

SECTION CORNER RECORD

SW 600-800

BOONE COUNTY SURVEYOR'S OFFICE



State Plane grid coordinates NAD83 (2011):

North: 1713606.38 East: 3082729.46 (U.S. survey feet)

North: 1713605.98 East: 3082716.46 (U.S. survey feet)

Type of monument: INDOT Type B Monument

Depth: Flush with adjacent road surface

Indiana tie card references:

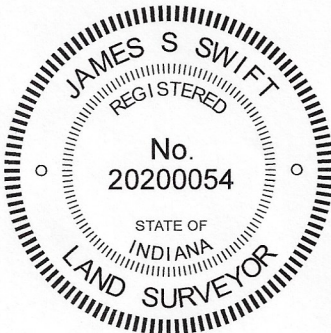
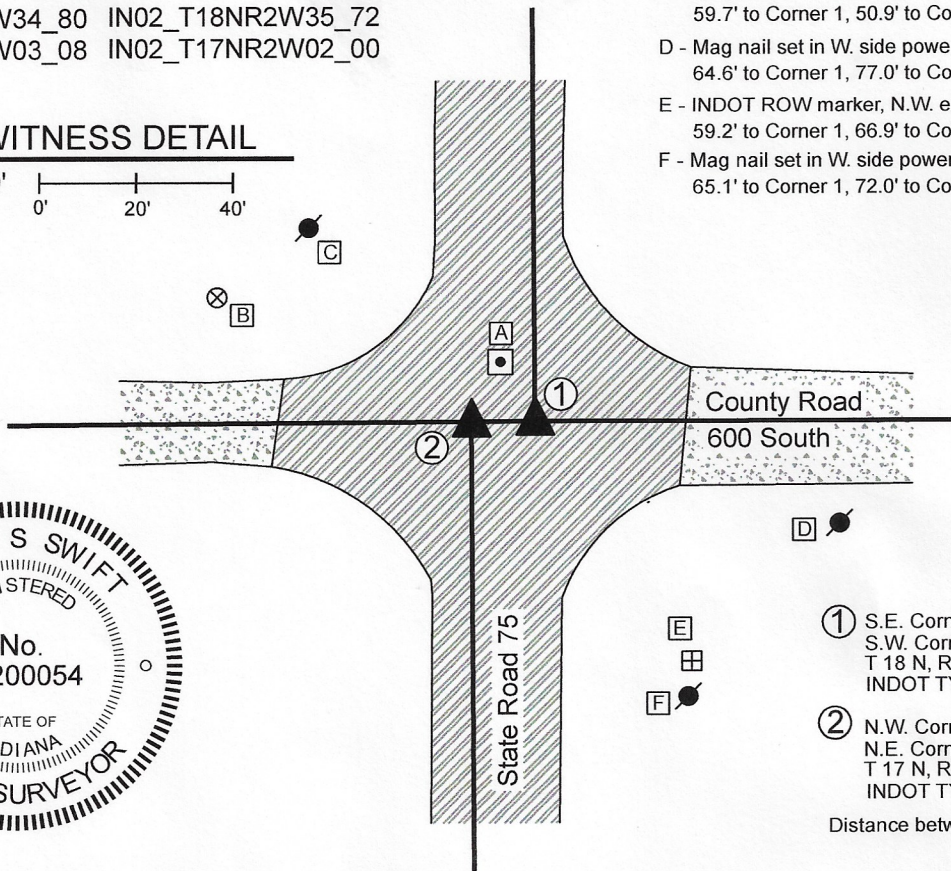
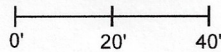
IN02_T18NR2W34_80 IN02_T18NR2W35_72

IN02_T17NR2W03_08 IN02_T17NR2W02_00

- A - INDOT Type B monument, flush
14.3 to Corner 1, 14.2' to Corner 2
- B - Boone County witness mark, flush,
70.6' to Corner 1, 58.8' to Corner 2
- C - Mag nail set in S.E. side power pole, 2' a.g.
59.7' to Corner 1, 50.9' to Corner 2
- D - Mag nail set in W. side power pole, 2' a.g.
64.6' to Corner 1, 77.0' to Corner 2
- E - INDOT ROW marker, N.W. edge
59.2' to Corner 1, 66.9' to Corner 2
- F - Mag nail set in W. side power pole, 2' a.g.
65.1' to Corner 1, 72.0' to Corner 2

CORNER WITNESS DETAIL

SCALE 1" = 40'

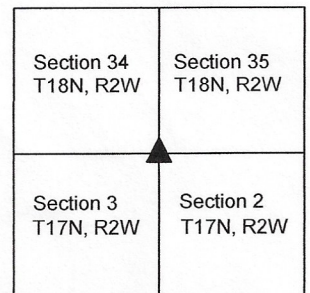


- ① S.E. Corner, Section 34
S.W. Corner, Section 35
T 18 N, R 2 W
INDOT TYPE B MONUMENT
- ② N.W. Corner, Section 2
N.E. Corner, Section 3
T 17 N, R 2 W
INDOT TYPE B MONUMENT

Distance between monuments: 13.0'

The INDOT Type B monuments were found in place and held as marking the respective corners. No specific descriptions of Corner 1 were found in the BCS Surveyor's Record beyond the original establishment of the corner as a wood post in 1819. The original federal notes for Corner 2 call for an offset of 22 links (14.52 feet) west. A BCS record on November 13-14, 1856 states, with respect to corner 2 and referencing a measured line from the south, "Intersected township line 14 links East of corner. Reestablished. Set Rock 12,14. No bearing trees." It is not clear from this record whether the corner was established at 14 links East, or whether it was established at the record offset of 22 links. A BCS tie card dated December, 2003 shows Corner 1 as a '1' bar bent north' and shows Corner 2 as a rebar, with a distance separation of 13.08 feet. The date when the Type B monuments were set is not known, but it is believed that they replaced the monuments shown on the 2003 tie card. The two monuments are 13.0 feet apart, very similar to the 2003 call. Uncertainties of approximately 1.5 feet may be attributed to the relative position of the monuments with respect to the federal offset of 22 links (14.52 feet) versus the measured offset of 13.0 feet. Both monuments fit well with local evidence, being in-line with the east-west roadway and being in-line with the prolongations of the respective portions of State Highway 75 to the north and south. No excavation was performed at these corners as they fall within a state highway. The Type B monuments were held as marking the respective corners. It is noted that Corner 2 falls approximately 0.2 foot south of a straight line connecting Corner 1 with the south quarter corner of section 34 (see BCS Corner SW 600-850). A third, similar monument was also found, as shown on the attached sketch. This monument does not represent a section corner and is shown for informational purposes only.

Jackson Township



Kenneth E. Hedge
Kenneth E. Hedge, County Surveyor

James S. Swift
James S. Swift, IN LS 20200054

July 21, 2020

SECTION CORNER RECORD

BOONE COUNTY SURVEYOR'S OFFICE

SW 600-850

Data for Corner 1 only:
 State Plane grid coordinates NAD83 (2011):
 North: 1713588.41 East: 3080070.04 (U.S. survey feet)

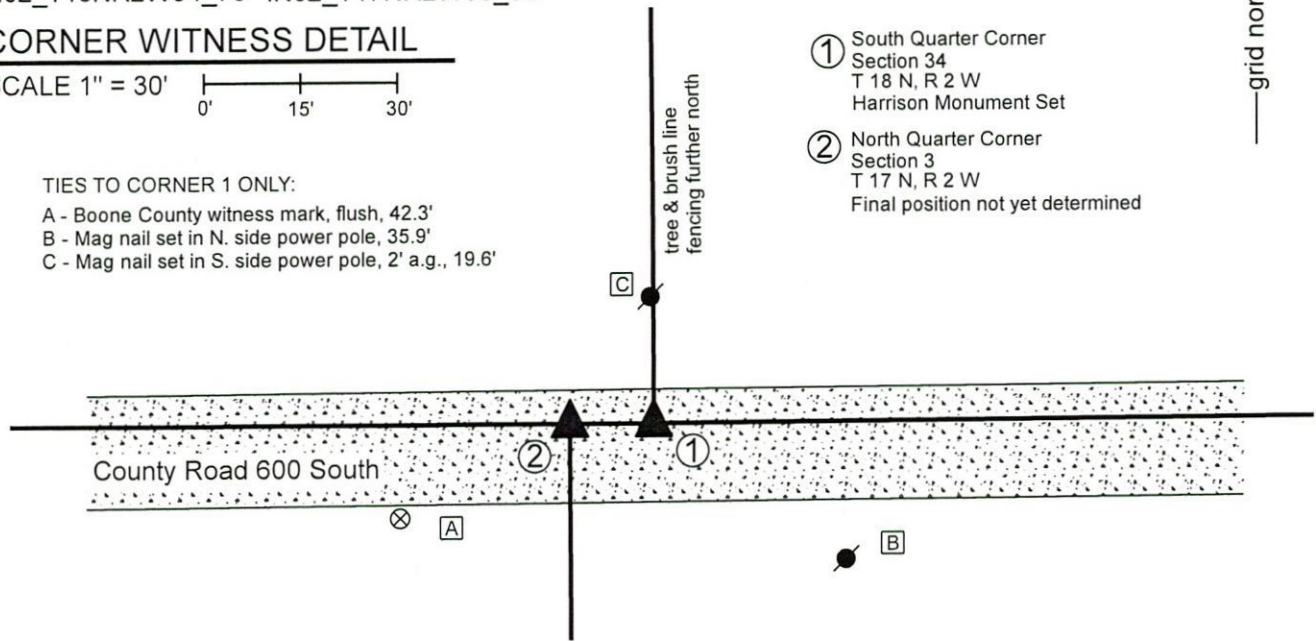
Type of monument: Harrison, 4" disk 'Section Corner'
 Depth: Six inches below adjacent road

Indiana tie card references:
 IN02_T18NR2W34_76 IN02_T17NR2W03_04

CORNER WITNESS DETAIL

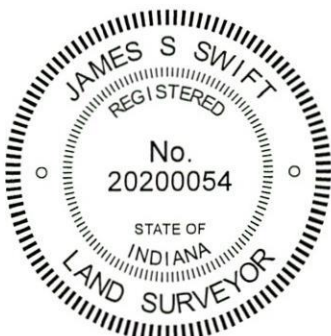
SCALE 1" = 30'

TIES TO CORNER 1 ONLY:
 A - Boone County witness mark, flush, 42.3'
 B - Mag nail set in N. side power pole, 35.9'
 C - Mag nail set in S. side power pole, 2' a.g., 19.6'



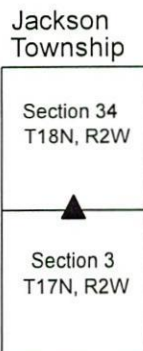
- ① South Quarter Corner
 Section 34
 T 18 N, R 2 W
 Harrison Monument Set
- ② North Quarter Corner
 Section 3
 T 17 N, R 2 W
 Final position not yet determined

The Harrison monument at Corner 1 was set in the position of a railroad spike previously found marking the corner. No specific descriptions of these corners were found in the BCS Surveyor's Record beyond the original establishment of Corner 1 as a wood post in 1819. Corner 2 is not an original federal corner. No BCS tie cards were found referencing these corners. Excavation was performed at both of these corners on October 23, 2019. Immediately prior to excavation, no survey monument was found. However, in 2010, a railroad spike had been found marking the apparent location of Corner 1, being slightly north of the center of County Road 600 South and in line with the southerly pronging of fencing to the north. Excavation of an area extending 5 feet in all cardinal directions from the position of the spike revealed no further evidence of Corner 1. It is noted that that the railroad spike was found to be approximately 6 feet south of a straight line between the standard corners to the east and west. Excavation was extended to the north edge of the County road. It was observed that the road bed does not extend further north than what is currently graded, indicating that the road has not somehow gradually shifted south over time and that the current road bed appears to also be the historical road bed. An approximate position for Corner 2 was computed at 13.2 feet (20 links) west of Corner 1. Excavation of an area extending approximately 4 feet in all cardinal directions from this position did not reveal further evidence of that corner. The position of the railroad spike found in 2010 was accepted as the best available evidence of the corner and was held as marking the corner. A Harrison monument was set at this position to mark Corner 1 on October 23, 2019. The exact position of Corner 2 will be determined pending confirmation of the position of the two corners at the intersection of County Road 600 South and State Road 75, approximately 1/2 mile east.



Kenneth E. Hedge
 Kenneth E. Hedge, County Surveyor

James S. Swift
 James S. Swift, IN LS 20200054
 January 15, 2020



SECTION CORNER RECORD

SW 600-900

BOONE COUNTY SURVEYOR'S OFFICE

State Plane grid coordinates NAD83 (2011):

Corner 1: North: 1713583.52 East: 3077410.66 (U.S. survey feet)

Corner 2: North: 1713583.47 East: 3077398.78 (U.S. survey feet)

Corner 1: Harrison, 4" disk 'Section Corner', 4" below adjoining gravel

Corner 2: Harrison, 4" disk 'Section Corner', 4" below road surface

Indiana tie card references:

IN02_T18NR2W34_72 IN02_T18NR2W33_80

IN02_T17NR2W04_08 IN02_T17NR2W03_00

① S.E. Corner, Section 33
S.W. Corner, Section 34
T 18 N, R 2 W

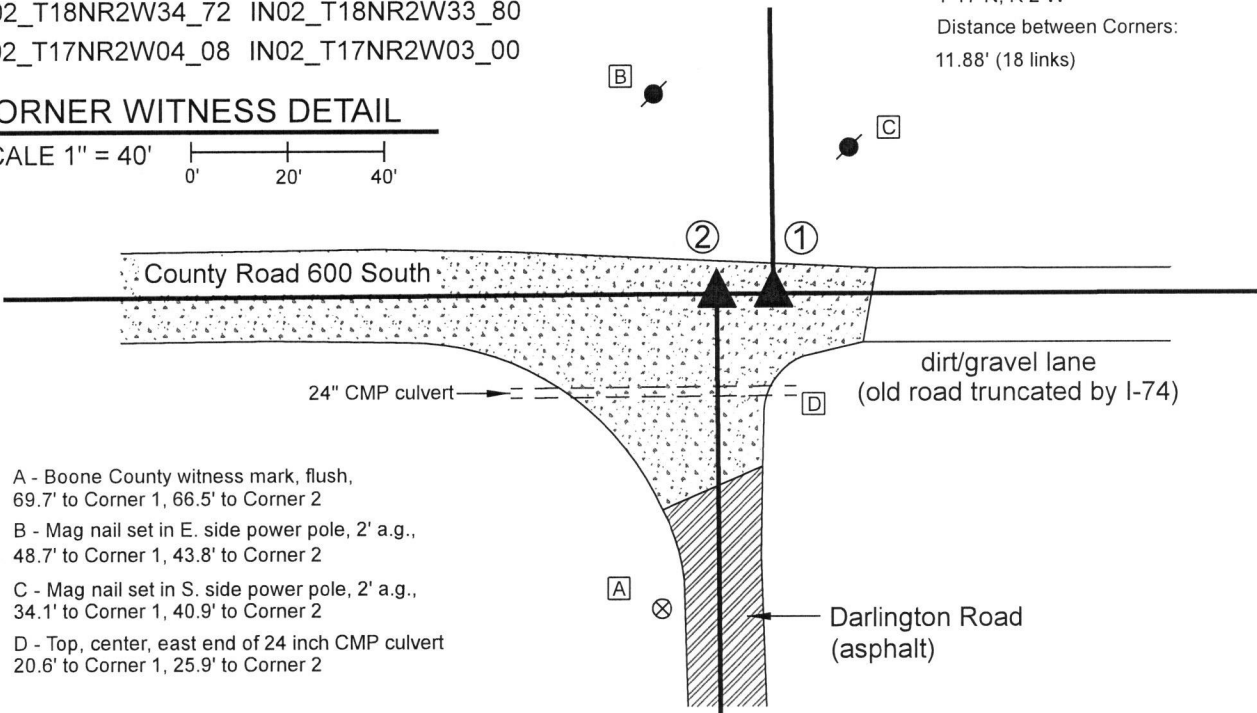
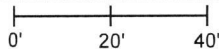
② N.W. Corner, Section 3
N.E. Corner, Section 4
T 17 N, R 2 W

Distance between Corners:
11.88' (18 links)



CORNER WITNESS DETAIL

SCALE 1" = 40'



A - Boone County witness mark, flush,
69.7' to Corner 1, 66.5' to Corner 2

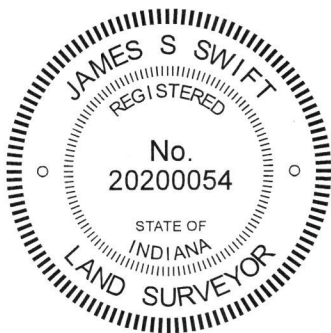
B - Mag nail set in E. side power pole, 2' a.g.,
48.7' to Corner 1, 43.8' to Corner 2

C - Mag nail set in S. side power pole, 2' a.g.,
34.1' to Corner 1, 40.9' to Corner 2

D - Top, center, east end of 24 inch CMP culvert
20.6' to Corner 1, 25.9' to Corner 2

The Harrison monument at Corner 2 was set in place of a rebar found. The Harrison monument at Corner 1 was set at a calculated position. A BCS record of November 11, 1865 states, with respect to Corner 2, "Found both stumps of trees. Drove no stake." No specific descriptions of Corner 1 were found in the BCS Surveyor's Record beyond the original establishment of the corner as a wood post in 1819. No recent BCS tie cards were found referencing these corners.

Initial excavation was performed at this set of corners on October 24, 2019. Prior to excavation, a 1/2 inch diameter rebar was found at the intersection of the prolonged centers of the county roads to the south and west, representing the commonly accepted position of Corner 2. No specific evidence was found marking the accepted position of Corner 1. Excavation centered on the found rebar revealed substantial evidence of a previously wet area. The base material of the road bed is made up of fist sized rocks. Below the road bed, at 2 feet deep, was found an intact section of 'corduroy road,' being large pieces of wood, milled with flat tops, oriented east-west and embedded in the clay layer below the road bed. This discovery is held as substantial evidence of the previously wet area and may explain why the surveyors in 1865 drove no stake. No further excavation was performed at Corner 2 as it is considered highly unlikely that a stone would be found below the corduroy road. Excavation at Corner 1 was limited due the presence of a large multi-pair phone line which was improperly marked prior to excavation and damaged during excavation. The rebar found at Corner 2 was held as marking that corner. The rebar was removed and replaced with a Harrison monument in the same position. Corner 1 was established at the record closing distance of 18 links from Corner 2 on the prolongation of the line connecting Corner 2 with the standard corner 1/2 mile west (see BCS Corner SW 600-950). A Harrison monument was set at this position on November 1, 2019. It is noted that this computed position fits very well with evidence of and relative distances to the standard corners 1/2 mile east and 1 mile east, respectively (see BCS corners SW-600-850 and SW 600-800).



Kenneth E. Hedge
Kenneth E. Hedge, County Surveyor

James S. Swift
James S. Swift, IN LS 20200054
November 19, 2019

Jackson Township

Section 33 T18N, R2W	Section 34 T18N, R2W
Section 4 T17N, R2W	Section 3 T17N, R2W