

# SECTION CORNER RECORD

NW 600-300

## BOONE COUNTY SURVEYOR'S OFFICE

State Plane grid coordinates NAD83 (2011):

Corner 1: North: 1777290.16 East: 3108929.71 (U.S. survey feet)

Corner 2: North: 1777290.13 East: 3108959.41 (U.S. survey feet)

Corner 1: INDOT Type B monument, flush

Corner 2: Mag nail with 'Boone County Surveyor' washer, flush

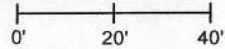
Indiana tie card references:

IN02\_T20NR1W33\_80 IN02\_T20NR1W34\_72

IN02\_T19NR1W04\_08 IN02\_T19NR1W03\_00

### CORNER WITNESS DETAIL

SCALE 1" = 40'



A - Boone County witness mark, flush,

43.6' to corner 1, 22.0' to corner 2

B - Mag nail set in S. side power pole, 2' a.g.,

69.0' to corner 1, 47.7' to corner 2

C - Mag nail set in N. side power pole, 2' a.g.,

124.3 to corner 1, 96.4' to corner 2

D - S.W. corner top of right-of-way marker,

50.7' to corner 1, 40.3' to corner 2

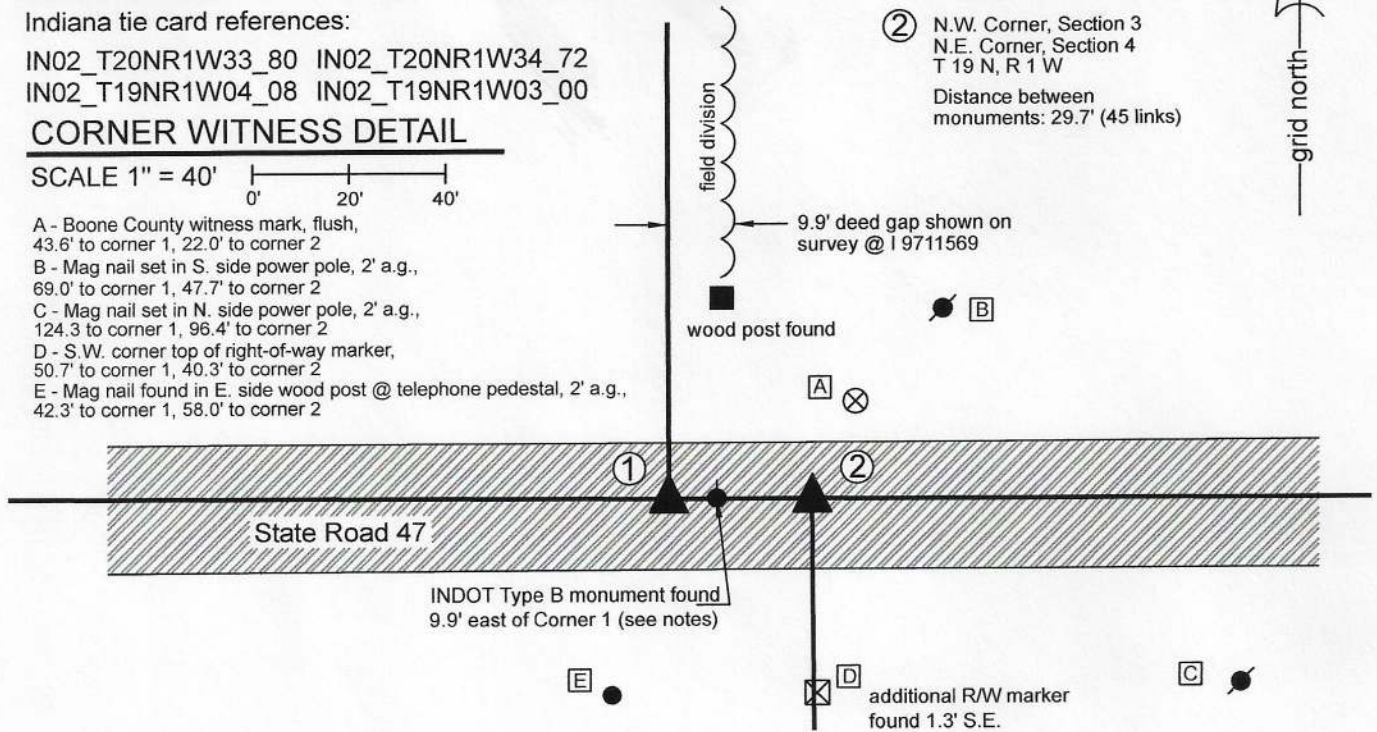
E - Mag nail found in E. side wood post @ telephone pedestal, 2' a.g.,

42.3' to corner 1, 58.0' to corner 2

① S.W. Corner, Section 34  
S.E. Corner, Section 33  
T 20 N, R 1 W

② N.W. Corner, Section 3  
N.E. Corner, Section 4  
T 19 N, R 1 W

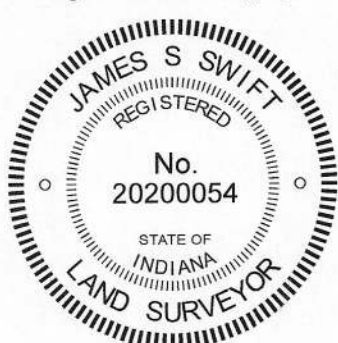
Distance between  
monuments: 29.7' (45 links)



The INDOT Type B Monument at Corner 1 was found and held as marking the corner. This position agrees with the position of a P.K. Nail shown as marking the corner on a BCS tie card dated June 22, 2005. Another INDOT Type B Monument was found at 9.9 feet east of the monument marking Corner 1. This monument does not represent the position of Corner 2. A surveyor's report produced for INDOT and recorded as Instrument 200700000086 in the Office of the Boone County Recorder shows, on page 26 of 33, that the easterly of the Type B monuments represents the northeast corner of section 4, T19N, R1W. This is not correct and is not in agreement with the 2005 BCS tie card, INDOT plans for the I-65 / S.R. 47 interchange or original federal field notes.

Both corners are original federal corners. Corner 1 was set in 1819 and Corner 2 was set in 1829, 45 links (29.7 feet) east of Corner 1. A BCS record dated October 21, 1862 states, with respect to Corner 1, "Reestablished from the corner of sects 3 & 4, T19. Trees both gone. Set two rocks. Under one 7x5x3. Top 9x8x7." A BCS record dated October 22, 1862 states, with respect to Corner 2, "Found stone at Corner." Both corners are shown on a BCS tie card dated June 22, 2005 with a separation of 29.70 feet, equal to the original offset of 45 links reported in the 1829 federal notes. A survey recorded as Instrument 9711589 in the Office of the Boone County Recorder shows a P.K. Nail found at Corner 1 and demonstrates a 9.90 foot deed gap east of the section line to the north of Corner 1. It is most likely that the additional INDOT Type B monument, shown as marking Corner 2 on the report recorded as Instrument 200700000086, was set in place of a monument which marked the easterly edge of the 9.90 foot deed gap. This monument does not mark Corner 2. Neither corner is specifically shown on the plans for the S.R. 47, Interstate 65 interchange ( F.Y. 1969, project no. I-65-5(35) 140. Sheet No. 25 ), though the plans show station information for the section lines to the north and south of the road. This information indicates a separation of approximately 22.5 feet. Two INDOT right-of-way markers were found on the south side of S.R. 47, one of which is approximately 1 foot east of the section line defined by Corner 2, the other being 1.3 feet southeasterly of the first. Uncertainties with respect to the position of Corner 2 and the south quarter corner of section 34, as shown on the aforementioned plans, is approximately 4 feet east-west.

The Type B monument at Corner 1 was held as found. Corner 2 was established at 29.70 feet east thereof on the township line as defined by Corner 1 and the south quarter corner of section 34 (see BCS Corner NW 600-250). A Mag nail was set at this position of September 8, 2020. The Type B monument 9.9 feet east of Corner 1 is noted but is not considered as marking either corner. This document will be presented to INDOT to request establishment of a more durable monument at Corner 2 during the next resurfacing project on S.R. 47.



*Kenneth E. Hedge*  
Kenneth E. Hedge, County Surveyor

*James S. Swift*  
James S. Swift, IN LS 20200054

September 9, 2020

Washington Township

Section 33 T20N, R1W	Section 34 T20N, R1W
Section 4 T19N, R1W	Section 3 T19N, R1W



# SECTION CORNER RECORD

NW 600-350

## BOONE COUNTY SURVEYOR'S OFFICE

State Plane grid coordinates NAD83 (2011):

Corner 1: North: 1777295.97 East: 3106292.41 (U.S. survey feet)  
 Corner 2: North: 1777295.93 East: 3106311.05 (U.S. survey feet)

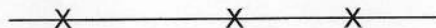
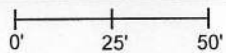
Corner 1: Indot type B monument, flush with adjacent road  
 Corner 2: Mag nail with "Boone County Surveyor" washer, flush

Indiana tie card references:

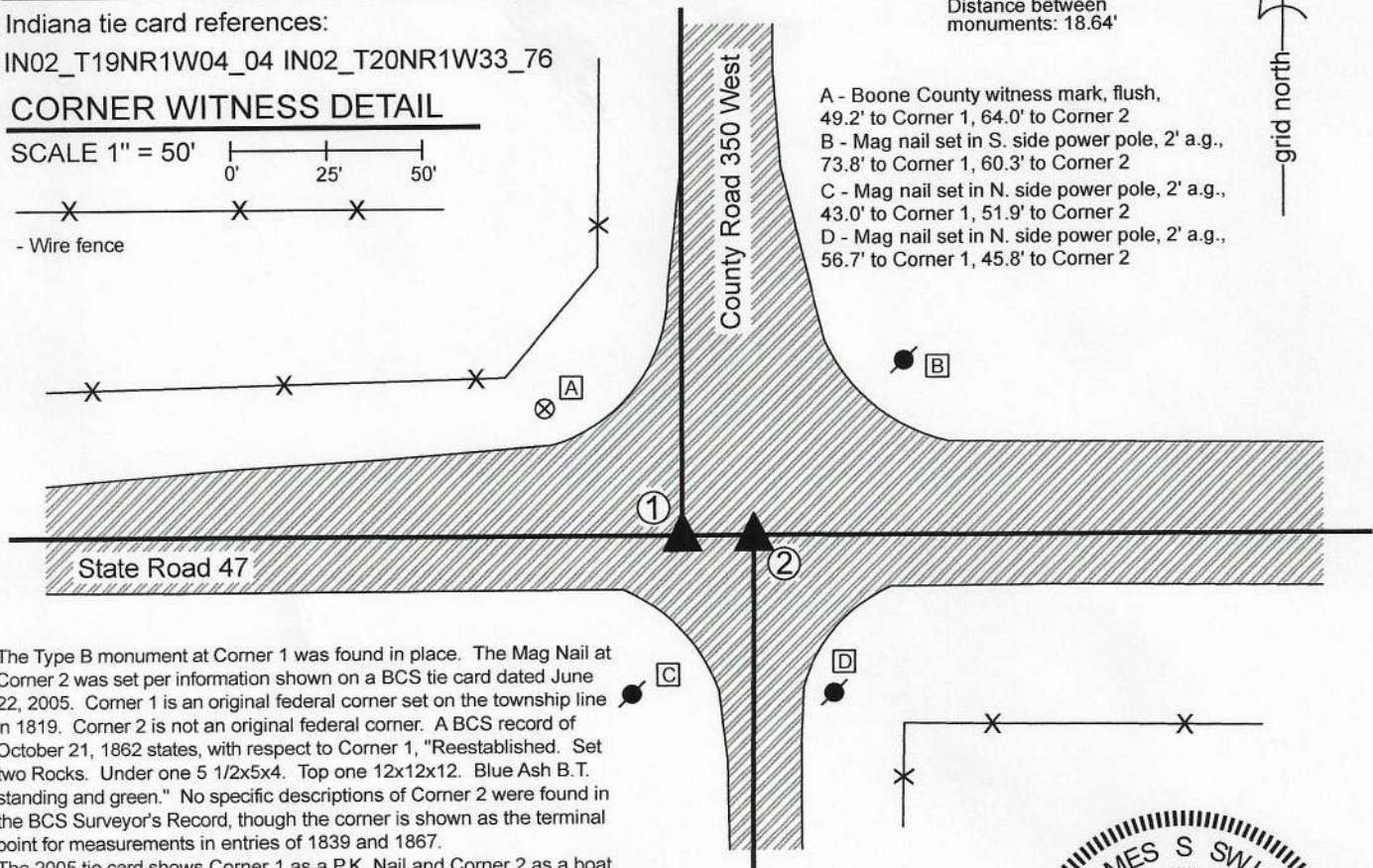
IN02\_T19NR1W04\_04 IN02\_T20NR1W33\_76

### CORNER WITNESS DETAIL

SCALE 1" = 50'



- Wire fence



- ① South Quarter Corner Section 33, T 20 N, R 1 W  
INDOT Type B Monument
  - ② North Quarter Corner Section 4, T 19 N, R 1 W  
Mag Nail Set
- Distance between monuments: 18.64'

- A - Boone County witness mark, flush, 49.2' to Corner 1, 64.0' to Corner 2
- B - Mag nail set in S. side power pole, 2' a.g., 73.8' to Corner 1, 60.3' to Corner 2
- C - Mag nail set in N. side power pole, 2' a.g., 43.0' to Corner 1, 51.9' to Corner 2
- D - Mag nail set in N. side power pole, 2' a.g., 56.7' to Corner 1, 45.8' to Corner 2

The Type B monument at Corner 1 was found in place. The Mag Nail at Corner 2 was set per information shown on a BCS tie card dated June 22, 2005. Corner 1 is an original federal corner set on the township line in 1819. Corner 2 is not an original federal corner. A BCS record of October 21, 1862 states, with respect to Corner 1, "Reestablished. Set two Rocks. Under one 5 1/2x5x4. Top one 12x12x12. Blue Ash B.T. standing and green." No specific descriptions of Corner 2 were found in the BCS Surveyor's Record, though the corner is shown as the terminal point for measurements in entries of 1839 and 1867.

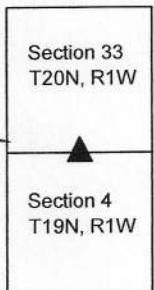
The 2005 tie card shows Corner 1 as a P.K. Nail and Corner 2 as a boat spike. Both corners are believed to have been removed during a 2006 paving project. Corner 1 was replaced with an INDOT Type B monument, as shown on a surveyor's report recorded as Instrument 200700000086 in the Office of the Boone County Recorder. Corner 2 was not replaced at that time. The 2005 tie card shows the corners at 18.64 feet apart with Corner 2 being in-line with the County Road to the south and Corner 1 being west of the County Road to the North. It is observed that Corner 1 generally lines up with the west edge of pavement for the County Road to the north. The 1939 aerial photo of this area shows a more distinct offset of the county roads than is visible today. It is known that significant improvements were made to the portion of the road north of S.R. 47 for purposes of providing transport and utilities to the former Old Indiana Fun Park. Conveyances to Boone County were not found, but it is believed that the roadway was expanded and shifted to the east. The deeds for the land adjoining this corner to the northeast and northwest (see Instruments 201100000585 and 201100000587, Boone County Recorder) appear to hold Corner 1 as shown on the 2005 tie card, calling for the north-south section line to be west of the center of the road. It is not specifically known how the offset distance of 18.64 feet was established. The average offset for the northeast and northwest corners of section 4, per the original federal field notes, is 28.7 feet. The corners as shown on the 2005 BCS tie card are held. Corner 1 was held as found and Corner 2 was established at 18.64 feet east on the township line as defined by Corner 1 and an INDOT Type B monument at the southeast corner of section 33. A mag nail was set at this position on September 8, 2020. This document will be presented to INDOT to request establishment of a more durable monument at Corner 2 during the next resurfacing project on S.R. 47.



*Kenneth E. Hedge*  
 Kenneth E. Hedge, County Surveyor

*James S. Swift*  
 James S. Swift, IN LS 20200054  
 September 9, 2020

Washington Township





# SECTION CORNER RECORD

# NW 600-400

## BOONE COUNTY SURVEYOR'S OFFICE

State Plane grid coordinates NAD83 (2011):

Corner 1: North: 1777297.42 East: 3103645.11 (U.S. survey feet)

Corner 2: North: 1777297.40 East: 3103672.75 (U.S. survey feet)

Corner 1: Mag nail with "Boone County Surveyor" washer, flush

Corner 2: INDOT Type B monument, flush with adjacent road

Indiana tie card references:

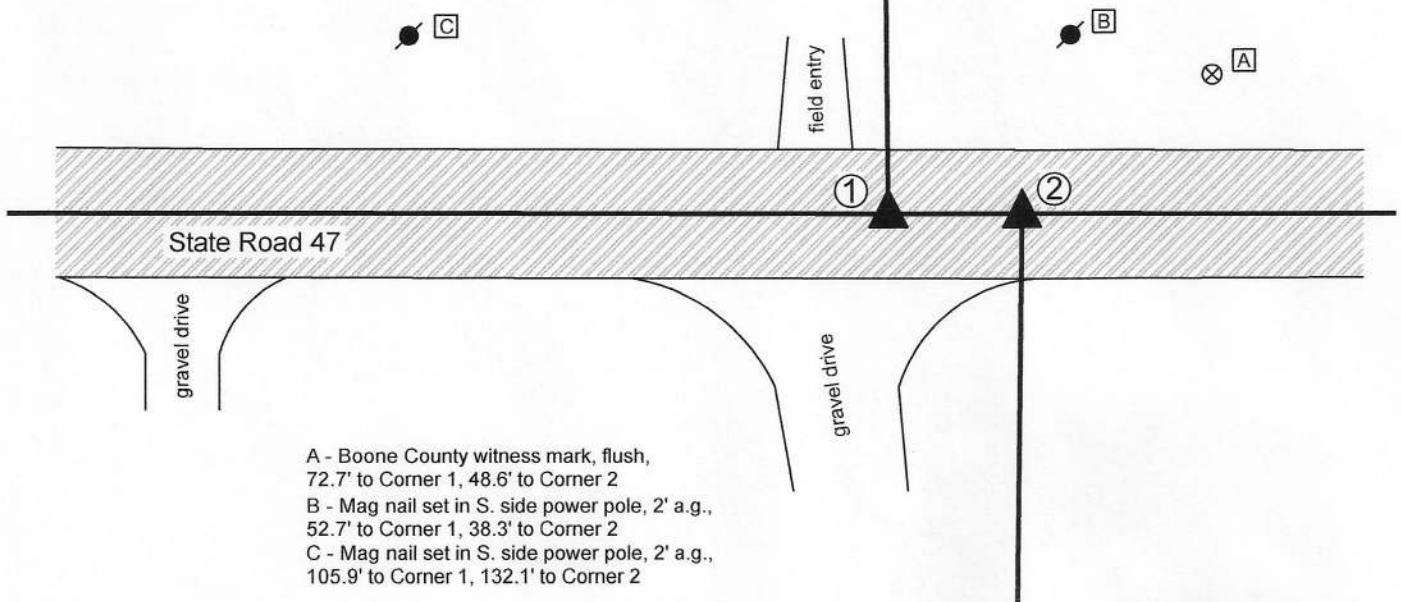
IN02\_T20NR1W33\_72 IN02\_T20NR1W32\_80

IN02\_T19NR1W05\_08 IN02\_T19NR1W04\_00

### CORNER WITNESS DETAIL

SCALE 1" = 40'

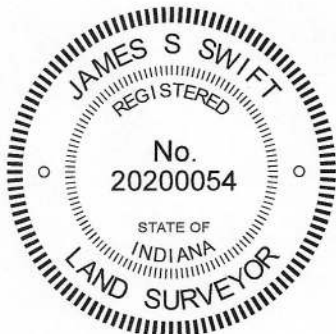
- ① S.E. Corner, Section 32  
S.W. Corner, Section 33  
T 20 N, R 1 W
  - ② N.W. Corner, Section 4  
N.E. Corner, Section 5  
T 19 N, R 1 W
- Distance between monuments: 27.64'  
Original offset = 42 links (27.72')



- A - Boone County witness mark, flush, 72.7' to Corner 1, 48.6' to Corner 2
- B - Mag nail set in S. side power pole, 2' a.g., 52.7' to Corner 1, 38.3' to Corner 2
- C - Mag nail set in S. side power pole, 2' a.g., 105.9' to Corner 1, 132.1' to Corner 2

The INDOT Type B monument at Corner 2 was found in place and held as the corner. The Mag nail set at Corner 1 was set with respect to information shown on a previous BCS tie card dated June 22, 2005.

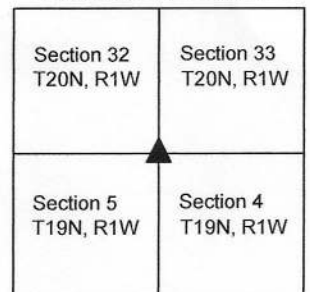
The original federal notes for Township 19 North, Range 1 West note an offset of 42 links east for the closing corner. A BCS Record of April 11-12, 1862, states, with respect to Corner 1, "Found stake set 42 links of Corner, Sects. 4 & 5." No specific descriptions of Corner 2 were found in the BCS Surveyor's record beyond the original establishment of the corner in 1829 and the reference in the 1862 record for Corner 1. A BCS tie card dated June 22, 2005 shows railroad spikes at both corners. It is believed that the railroad spike at Corner 2 was replaced with the Type B monument in 2006. The railroad spike at Corner 1 was not replaced with a monument at that time. Corner 1 was established on the prolongation of the township line as defined by Corner 2 and a Type B monument at the south quarter corner of Section 32 (see BCS Corner NW 600-350) at 27.64 feet, per the 2005 tie card. A Mag nail with washer was set at this position on August 27, 2020. No large scale excavation was performed as these corners fall in a state road. This documentation will be presented to INDOT to request the establishment of an INDOT section corner monument during the next resurfacing project on this part of S.R. 47.



*Kenneth E. Hedge*  
Kenneth E. Hedge, County Surveyor

*James S. Swift*  
James S. Swift, IN LS 20200054  
September 2, 2020

Washington Township



# SECTION CORNER RECORD

# NW 650-300

## BOONE COUNTY SURVEYOR'S OFFICE

State Plane grid coordinates NAD83 (2011):

North: 1779935.88 East: 3108922.39 (U.S. survey feet)

Type of monument: Harrison, 4" disk 'Section Corner'

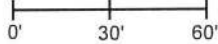
Depth: 5 inches above adjacent ground

Indiana tie card references:

IN02\_T20NR1W33\_36 IN02\_T20NR1W34\_44

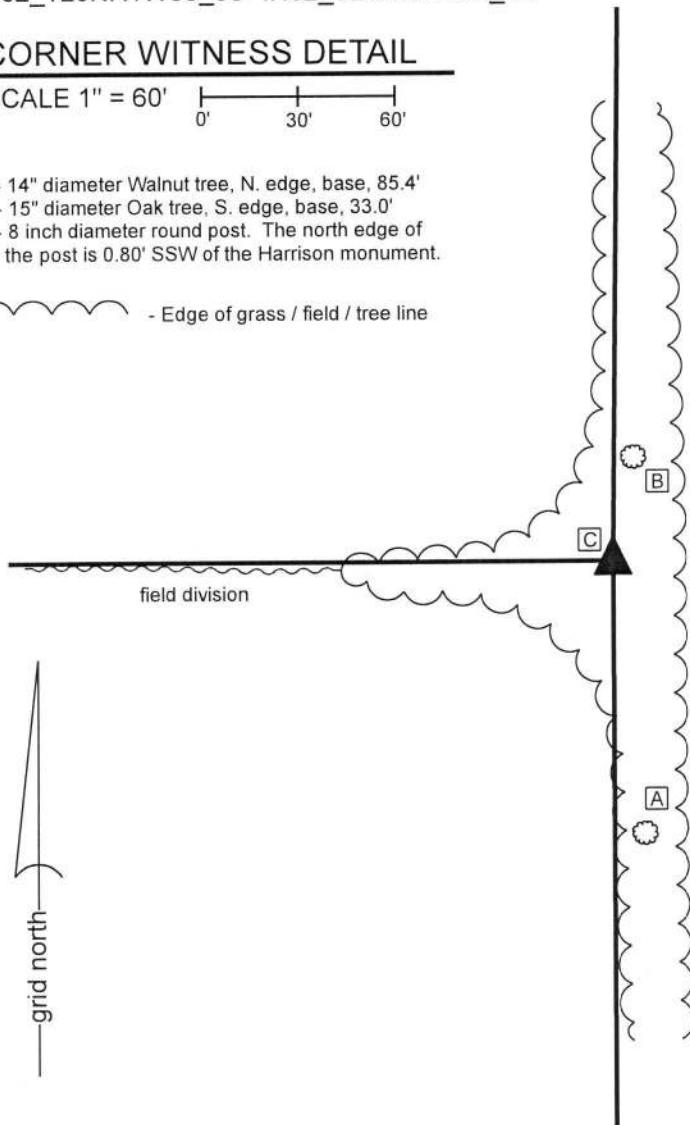
### CORNER WITNESS DETAIL

SCALE 1" = 60'



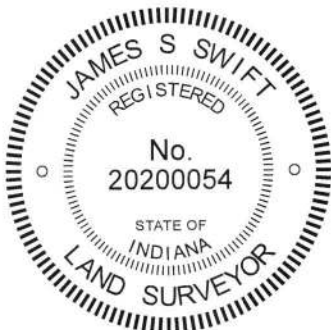
- A - 14" diameter Walnut tree, N. edge, base, 85.4'
- B - 15" diameter Oak tree, S. edge, base, 33.0'
- C - 8 inch diameter round post. The north edge of the post is 0.80' SSW of the Harrison monument.

- Edge of grass / field / tree line



The Harrison monument was set in place of a stone found. A BCS record of February 21, 1920 states, with respect to this corner, "Found rock in place." No recent BCS tie cards were found referencing the corner. A survey by Colin Nicholas Starr, LS #S0159, recorded as Instrument 9711589 in the Office of the Boone County Recorder shows the corner as a CRS (capped rebar set) 9.90 feet west of 'old wooden post found.' The Starr survey clearly shows a 9.9 foot gap between the adjoining land to the southeast and the section line. A 5/8 inch rebar matching the position shown on the Starr survey was found in a substantially disturbed condition at the southeast corner of an 8 inch diameter round corner post. The post does not appear to be ancient but does appear to pre-date the Starr survey. It appears Starr set a rebar at the southeast edge of the post and called the rebar the corner. The post has a notch to the north, indicating a former brace in that direction, and has evidence of fencing cut-off toward the north, east and west. The post approximately in-line with a field division to the west, approximately 10 feet west of a tree line to the south, and slightly west of a tree line to the north. The Starr survey shows fence along the line north from the corner. This fencing was not found present in 2019, but, as noted, the found post had fencing cut-off toward the north. An ancient post found at 660 feet north of the corner has fencing cut-off toward the north and south and standing fencing to the east. This post was found to fall approximately 1 foot west of a straight line between the corner to the north (see BCS corner NW 700-300) and the found post. Hence, the general position of the corner as shown on the Starr survey fits with the evidence to the north and also fits with the evidence to the south, taking into account the 9.90 foot gap. Excavation around the post on March 27, 2019 revealed a stone which bore the distinct characteristics of a stone set purposely to mark the corner. The stone was found north of, but not touching, the post. The stone is triangular in shape, measuring 18 inches tall by 13 inches N-S by 13 inches E-W. One point of the triangle was oriented toward the north and the other points oriented east-west. It was vertical, as found, with a distinct top of approximately 4 inches by 4 inches. The stone was found slightly below ground level. No specific etched marks were found on the stone, nor were any noted in the 1920 record. The stone did not appear to be acting as a brace rock for the post and did appear to have been purposely set, oriented vertically and in cardinal directions. The stone was accepted as the best available evidence of the corner and was held as marking the corner. The stone was removed and replaced with a Harrison monument in the position of the center of the 4 inch by 4 inch top. The Harrison monument is 0.80 foot NNE of the north edge of the post. The rebar, removed during excavation, had been 1.6 feet south and 0.7 foot east of the Harrison monument.

This corner was originally established as a wood post in 1822.



Kenneth E. Hedge, County Surveyor

James S. Swift, IN LS 20200054  
May 22, 2019

Washington Township

Section 33 T20N, R1W	Section 34 T20N, R1W
-------------------------	-------------------------

# SECTION CORNER RECORD

## BOONE COUNTY SURVEYOR'S OFFICE

NW 650-350

State Plane grid coordinates NAD83 (2011):  
 North: 1779936.46 East: 3106283.42 (U.S. survey feet)

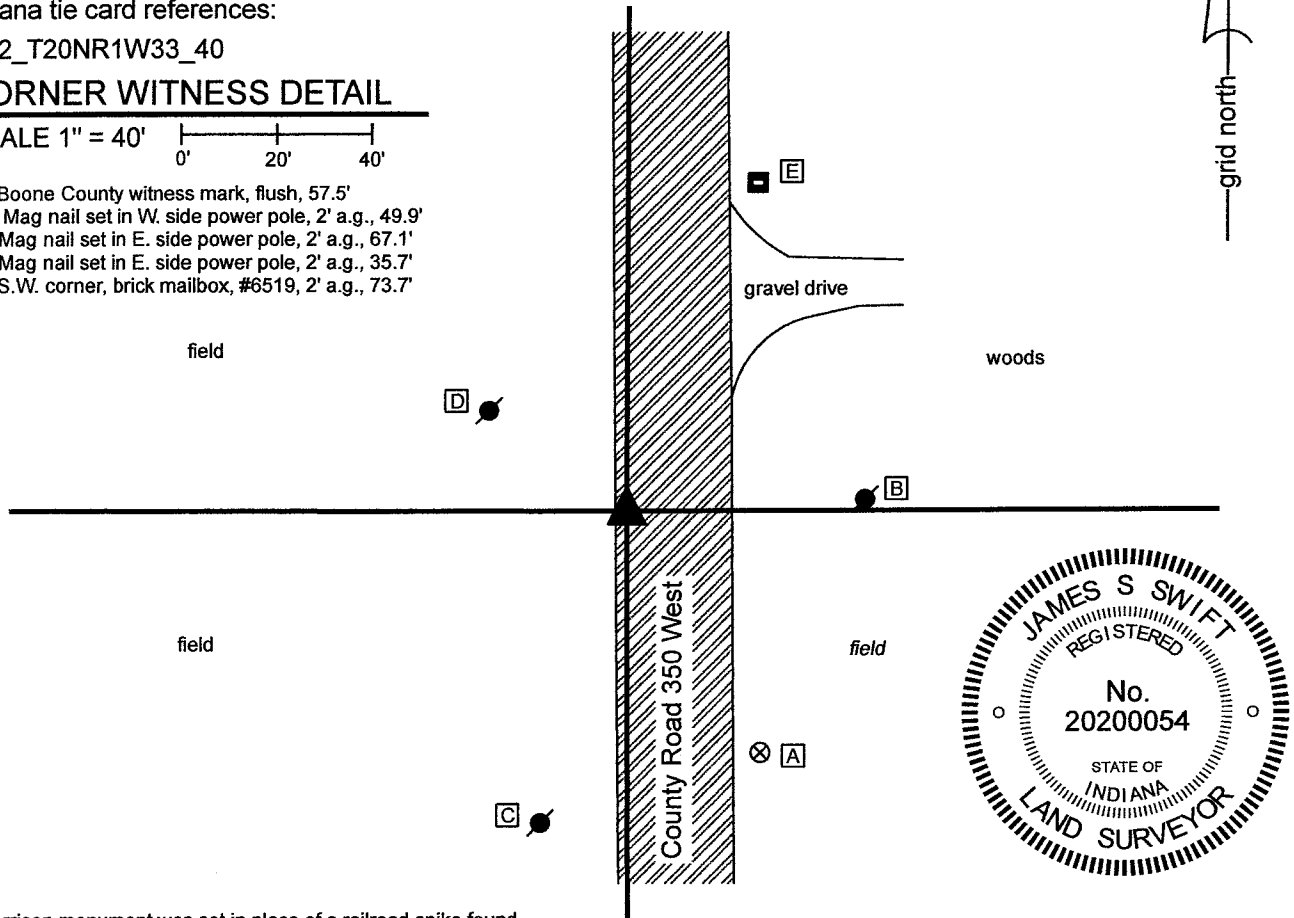
Type of monument: Harrison, 4" disk 'Section Corner'  
 Depth: Flush with adjacent road surface

Indiana tie card references:  
 IN02\_T20NR1W33\_40

### CORNER WITNESS DETAIL

SCALE 1" = 40'

- A - Boone County witness mark, flush, 57.5'
- B - Mag nail set in W. side power pole, 2' a.g., 49.9'
- C - Mag nail set in E. side power pole, 2' a.g., 67.1'
- D - Mag nail set in E. side power pole, 2' a.g., 35.7'
- E - S.W. corner, brick mailbox, #6519, 2' a.g., 73.7'



The Harrison monument was set in place of a railroad spike found. This corner is not an original corner of the PLSS, set by the federal government. It is shown as being established by the Boone County Surveyor per an entry in the BCS Surveyor's Record of June 1, 1832. No monument is mentioned in that entry and no other references were found in the old Surveyor's Record. A BCS tie card of unknown date, likely late 1960s or early 1970s, shows the corner as being in the center of County Road 350 West and states "No stone." A BCS record of November 4, 1989 shows the corner as a P.K. Nail found. A description in Instrument 201100000586 calls for the corner as a railroad rail on end. Several other descriptions call the east line of the southwest quarter of Section 33 as being west of the center of the road. It is noted that the presence of a railroad rail at the corner fits with the character of the undated tie card and known procedures of BCS field crews from the late 1960s and early 1970s.

It is known that this portion of County Road 350 West was reconstructed in the late 1980s. Plans for that reconstruction are on file with the Boone County Highway Department, Project Number RSS-BRS-8106, dated February 7, 1986. These plans clearly show the corner as "R.R. Rail on end Sec. Cor." at P.I. Sta 26+41.65, Line "A" of said project. The plans also clearly demonstrate that the center of the reconstructed road was intended to be east of the old road and section line in the immediate vicinity of this corner. The railroad spike found at three inches deep in the pavement fit well with deed references to the corner, including the reference to the rail on end. Approximately 1 foot of uncertainty in all directions may be attributed to the relative position of this monument with other evidence shown on the 1986 road plans. The railroad spike was removed but no further evidence was found below. Clearly the rail was removed during road construction, which would have also removed other evidence of the corner, such as a corner stone, if one was ever present. The railroad spike was held as marking the corner. This monument was replaced with a Harrison monument set in the same position on April 30, 2021. It is noted that the road plans show a bend of 0°15'20" in Line "A" at this corner, and that the east line of the northwest quarter of Section 33 crosses the center of the reconstructed road. While this corner falls on the west side of the reconstructed roadway, the north quarter corner of Section 33 falls on the east side of the reconstructed intersection of Roads 350 West and 700 North.

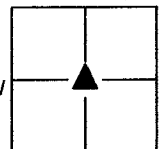
Kenneth E. Hedge, County Surveyor

James S. Swift, IN LS 20200054

May 11, 2021

Washington Township

Section 33  
 T20N, R1W



# SECTION CORNER RECORD

# NW 650-400

## BOONE COUNTY SURVEYOR'S OFFICE

State Plane grid coordinates NAD83 (2011):

North: 1779940.60 East: 3103627.99 (U.S. survey feet)

Type of monument: Harrison, 4" disk 'Section Corner'

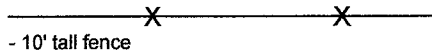
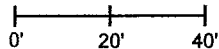
Depth: Three inches above surrounding ground

Indiana tie card references:

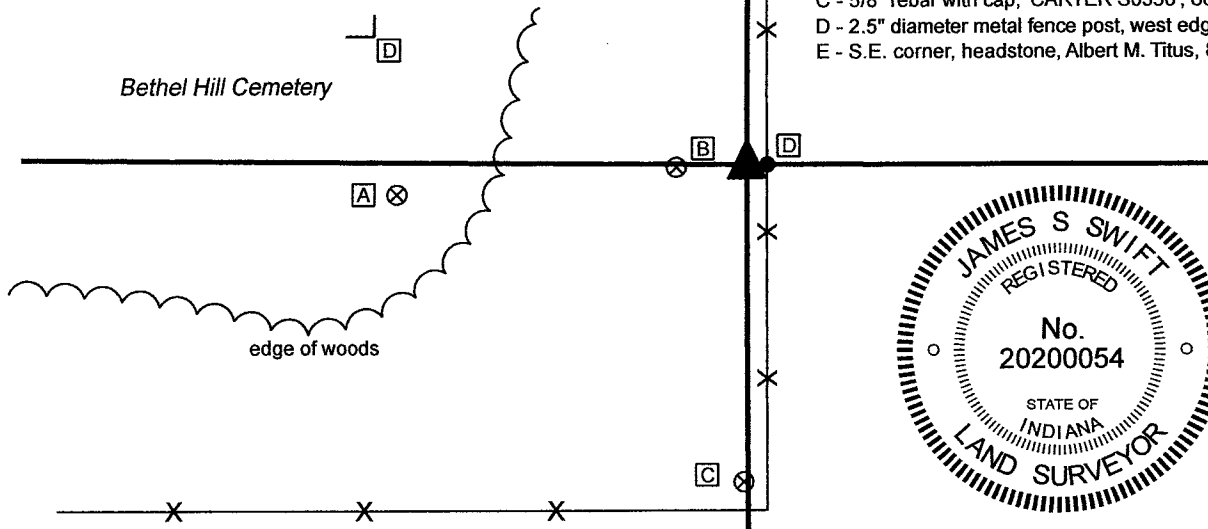
IN02\_T20NR1W32\_44 IN02\_T20NR1W33\_36

### CORNER WITNESS DETAIL

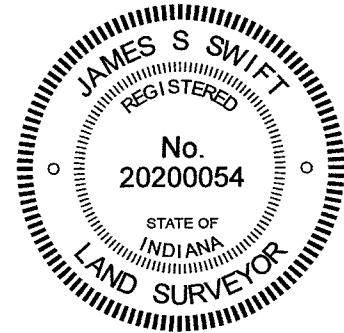
SCALE 1" = 40'



- 10' tall fence



- A - Boone County witness mark, flush, 73.3'
- B - Uncapped 5/8" rebar, 14.8'
- C - 5/8" rebar with cap, 'CARTER S0350', 66.0'
- D - 2.5" diameter metal fence post, west edge, 4.3'
- E - S.E. corner, headstone, Albert M. Titus, 82.2'



The Harrison monument was set in place of a wood corner post found. No specific description of this corner was found in the BCS Surveyor's Record beyond the original establishment of the corner as a wood post in 1829. However, the corner is mentioned in a record of April 11-12, 1862 which states that the corner is "A little east of road. Found point, drove no stake." No recent BCS tie cards were found referencing the corner. A survey recorded in Survey Book 3, pages 11-16 in the Office of the Boone County Recorder states that a 5/8-inch rebar was found one foot north of a fence corner post and held as marking the corner. The deed description in Instrument 200900000175 in said Recorder's Office (adjoining land to the southeast) calls the corner as a post. The deed description in Instrument 201400006332 (nearby, to the northwest, tied to this corner) references the corner as a wooden headpost.

Both the rebar called in the referenced survey and the post called in the referenced deeds were found in the field. The rebar is 14.8 feet west of the post. The rebar is, indeed, adjacent to a wood post, but this does not appear to be corner post. The post called in the deeds, the position of which was confirmed by numerous monuments found marking corners of the two respective parcels described by the deeds, is at the intersection of old fences to the south, north and east. The fence to the south is ill defined, and appears to bear slightly southwest from the corner. The rebar falls generally in-line with the center of a short segment of roadway to the north. The post is east of the roadway, matching the 1862 reference that the corner was east of the road. No reliable evidence was found to support the position of the uncapped rebar as representing the corner. The wood corner post has clearly been held as marking the corner for deed descriptions in the area. The position of the post also works with respect to old fencing on the south, east and west sides of the adjacent Bethel Hill Cemetery with respect to the description in Deed Book 202, page 325, which calls for an exception of 4 rods north-south by 20 rods east-west in the northeast corner of the southeast quarter of Section 32. It is noted that a straight line connecting evidence of the northeast and southeast corners of Section 32 falls yet further east than the post. The wood corner post was held as the best available evidence of the corner. By April, 2021, the post was no longer attached to the ground and was in a standing position only as supported by standing fencing. The post was removed and a Harrison monument was set partially over and partially in place of the subterranean base of the post on April 22, 2021.

It is noted that the existing ten-foot tall fence shown as being east of the corner on this sketch is known to have been purposely set off the line and that said fencing was installed only after surveyor Jerry L. Carter, S0350, had staked the line. Although no survey is available showing Mr. Carter's work in this immediate vicinity, it is apparent that he held the post as marking the corner. The tall fence is not in-line with older, traditional wire fence, which is partially present to the east, north and south of the corner, but not shown hereon.

Washington Township

Section 32 T20N, R1W	Section 33 T20N, R1W
-------------------------	-------------------------

Kenneth E. Hedge, County Surveyor

James S. Swift, IN LS 20200054 May 11, 2021



# SECTION CORNER RECORD

## BOONE COUNTY SURVEYOR'S OFFICE

NW 700-300

State Plane grid coordinates NAD83 (2011):

North: 1772068.94 East: 3087819.95 (U.S. survey feet)

Type of monument: 4 inch Mag spike set over

Brass Plug in monument box, INDOT Type B

Depth: Mag spike - flush, plug - 5 inches deep

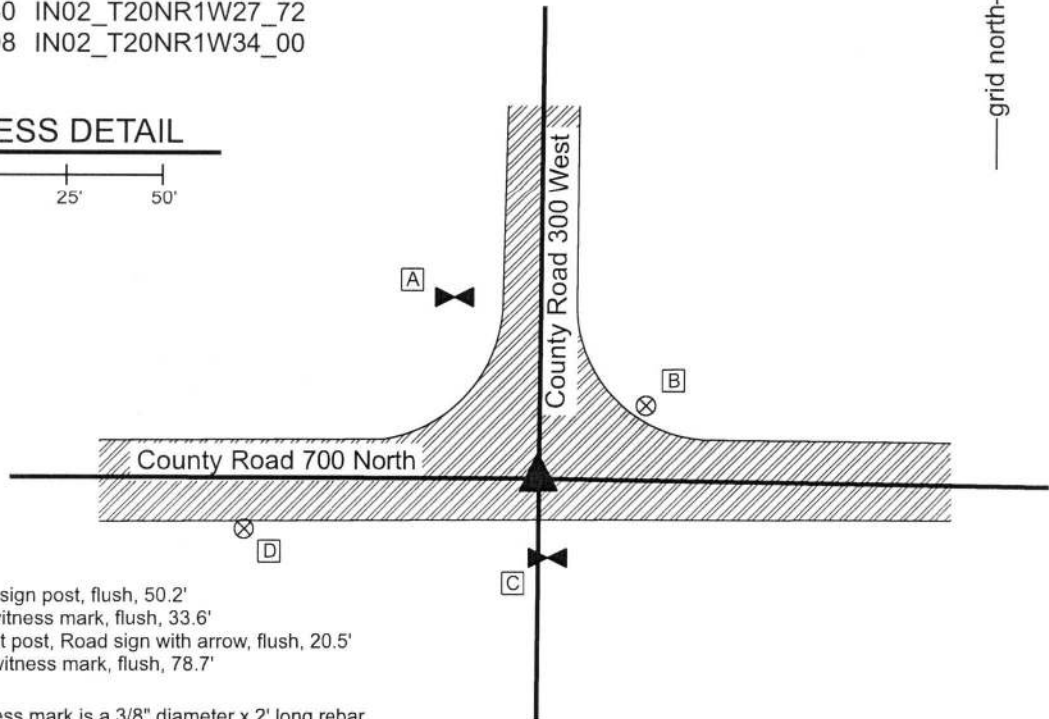
Indiana tie card references:

IN02\_T20NR1W28\_80 IN02\_T20NR1W27\_72

IN02\_T20NR1W33\_08 IN02\_T20NR1W34\_00

### CORNER WITNESS DETAIL

SCALE 1" = 50'

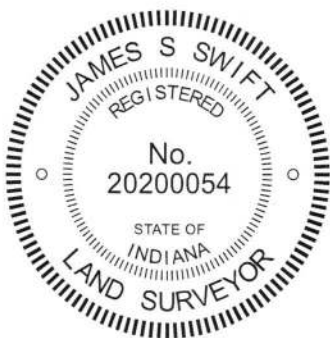


- A - East edge, stop sign post, flush, 50.2'
- B - Boone County witness mark, flush, 33.6'
- C - West edge, west post, Road sign with arrow, flush, 20.5'
- D - Boone County witness mark, flush, 78.7'

Boone County witness mark is a 3/8" diameter x 2' long rebar bearing a metal cap stamped "Boone County Witness Point."

The brass plug within the monument box was found in place, buried under 5 inches of asphalt. The Mag Spike was set directly over the plug. A BCS record dated September 25, 1871 states, with respect to this corner, "Reestablished from knowledge obtained when surveying road, when stump of one tree was here. Found two stakes I drove at that time, One 15 ft. N, the other 15 ft. S. of Corner. Set rock 28x16x10." No recent BCS tie cards were found referencing this corner.

No excavation was performed at this corner beyond exposing the monument box from below the 5 inch covering of asphalt due to the fact that the corner falls in an area of substantial fill associated with the approach to the overpass of County Road 700 North over Interstate 65. The corner is shown on the plans for I-65, reference R-08208-29, fiscal year 1969, plan I-65-5(36) 140. The plans show the corner at the intersection of 'Sec. Lines' and is labeled as "approx. 1/4 Sect. Cor. TYPE B MONUMENT REQ'D." It is believed that the monument has been held as the corner by surveyors since being established in association with the construction of Interstate 65. Due to the substantial fill placed during the construction of the overpass, it is not practical to excavate for further evidence and the INDOT Type B monument was held as marking the corner. The position of the monument works well with the relative positions of proximate corner and works well with the local evidence of the corner in the form of the roadways to the east and north. On July 17, 2018, the top of the monument box was exposed, the lid of the box was removed and the brass plug located. Asphalt patching was placed over the box, with no lid, and plug to flush with the surface of the road. On August 3, 2018, a 4 inch long Mag Spike was set directly over the brass plug. This corner was originally established as a wood post in 1822.



*Kenneth E. Hedge*  
 Kenneth E. Hedge, County Surveyor

*James S. Swift*  
 James S. Swift, IN LS 20200054  
 August 7, 2018

Washington Township

Section 28 T20N, R1W	Section 27 T20N, R1W
Section 33 T20N, R1W	Section 34 T20N, R1W

# SECTION CORNER RECORD

# NW 700-350

## BOONE COUNTY SURVEYOR'S OFFICE

State Plane grid coordinates NAD83 (2011):

North: 1782593.00 East: 3106285.59 (U.S. survey feet)

Type of monument: Harrison, 4" disk 'Section Corner'

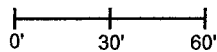
Depth: Flush with adjacent road surface

Indiana tie card references:

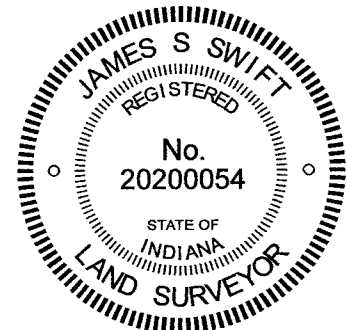
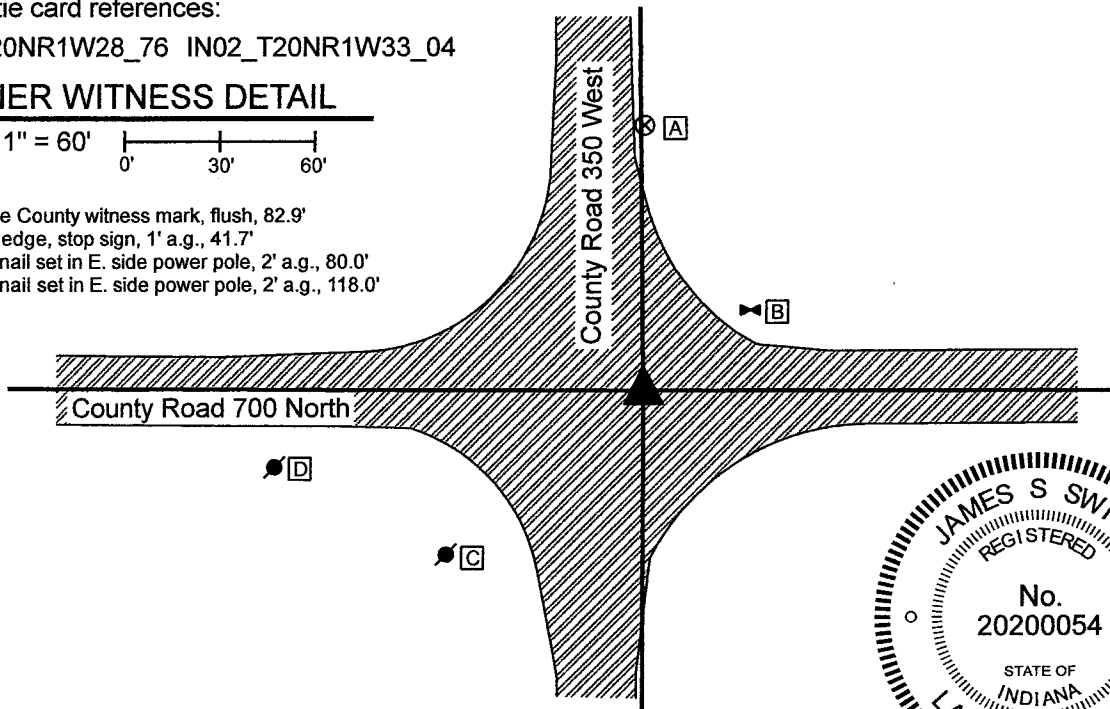
IN02\_T20NR1W28\_76 IN02\_T20NR1W33\_04

### CORNER WITNESS DETAIL

SCALE 1" = 60'



- A - Boone County witness mark, flush, 82.9'
- B - S.W. edge, stop sign, 1' a.g., 41.7'
- C - Mag nail set in E. side power pole, 2' a.g., 80.0'
- D - Mag nail set in E. side power pole, 2' a.g., 118.0'



The Harrison monument was set in place of a railroad spike found.

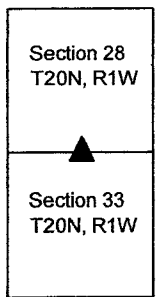
A BCS record dated March 23, 1874 states, with respect to this corner, "Set Rock. 24x15x11 +."

No recent BCS tie cards were found referencing the corner.

This corner is shown on plans for County Road 350 West, Project Number RSS-BRS-8106, dated February 7, 1986, on file at the Boone County Highway Department. These plans show the corner as "Iron Pipe 1/4 Sec. Cor." at P.I. Sta. 52+97.60, "A". The plans clearly demonstrate that this position was at the approximate center of the intersection of County Roads 700 North and 350 West prior to the reconstruction of the roadway. The railroad spike found at 3 inches deep in the road fits with the P.I. station for the iron pipe shown on the plans with approximately 1 foot of uncertainty in all directions, with respect to other references shown on the plans, including a railroad spike at the center of Section 33 (see BCS Corner NW 650-350) and a Type B Monument at the south quarter corner of Section 33 (see BCS Corner NW 600-350). The railroad spike was accepted as being in the same position as the iron pipe shown on the road plans and was held as marking the corner. The spike was removed and replaced with a Harrison monument on April 30, 2021. No other metal monument was found below the spike. No excavation was performed in search of a corner stone or other ancient evidence, as it is believed that the entire roadway was completely reconstructed in the late 1980s, destroying other evidence of the corner.

Given the references to the iron pipe on the highway plans and the relative positions of this corner with respect to adjacent corners, minimal uncertainty is associated with the position of the corner as held prior to and during the 1980s reconstruction of the road. However, it is apparent from deed and survey references that this position has not generally been known since the reconstruction of the road. The north-south roadway was built almost entirely west of the section line in the immediate vicinity of the corner and subsequent surveyors have held the center of the intersection as it is located post-reconstruction, as evidence of the corner. A survey recorded in Survey Book 3, pages 11-16, Boone County Recorder, and a survey by Jerry L. Carter, LS NO. S0350, dated January 19, 2008, both show the corner as a P.K. Nail found at the approximate center of the current intersection. Said nail is no longer present, but is known to have been 1.2 feet north and 11.4 feet west of the actual corner. A metes and bounds description of the northwest quarter of Section 33 found in Instrument 201200013398 states a difference between record and measured distances along the north line of the northwest quarter of almost 30 feet and appears to hold the subject corner as being approximately 18 feet west of the actual position of the corner.

Clearly the reconstruction of the intersection west of the original intersection has caused confusion for surveyors, but the road plans on file at the Boone County Highway Department make clear the position of the corner, as held prior to and during the reconstruction and based on the iron pipe found at the center of the original intersection. It is noted that the east line of the northwest quarter crosses the center of the reconstructed road and that the center quarter corner of Section 33 (see BCS Corner NW 650-350) is on the west side of the current roadway.



*Kenneth E. Hedge*  
 Kenneth E. Hedge, County Surveyor

*James S. Swift*  
 James S. Swift, IN LS 20200054  
 Washington Township  
 May 11, 2021