

SECTION CORNER RECORD

NE 600-200

BOONE COUNTY SURVEYOR'S OFFICE

State Plane grid coordinates NAD83 (2011):

Corner 1: North: 1777408.36 East: 3134886.33 (U.S. survey feet)

Corner 2: North: 1777410.73 East: 3135063.54 (U.S. survey feet)

Type of monument: INDOT Type B, plug in monument box

Depth: flush with adjacent road surface

Indiana tie card references:

IN02_T20NR1E32_80 IN02_T20NR1E33_72

IN02_T19NR1E05_08 IN02_T19NR1E04_00

CORNER WITNESS DETAIL

SCALE 1" = 60'

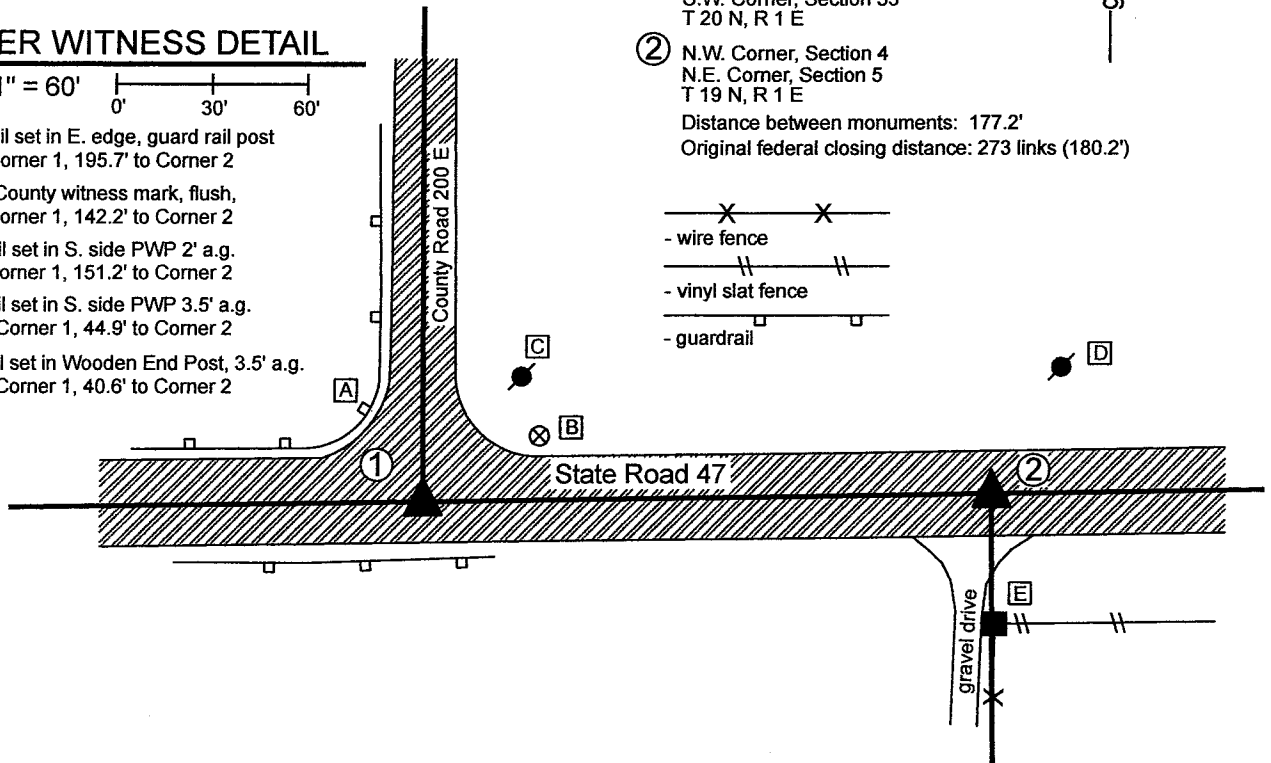
A - Mag Nail set in E. edge, guard rail post
33.6' to Corner 1, 195.7' to Corner 2

B - Boone County witness mark, flush,
41.6' to Corner 1, 142.2' to Corner 2

C - Mag nail set in S. side PWP 2' a.g.
49.4' to Corner 1, 151.2' to Corner 2

D - Mag nail set in S. side PWP 3.5' a.g.
203.2' to Corner 1, 44.9' to Corner 2

E - Mag nail set in Wooden End Post, 3.5' a.g.
182.6' to Corner 1, 40.6' to Corner 2



① S.E. Corner, Section 32
S.W. Corner, Section 33
T 20 N, R 1 E

② N.W. Corner, Section 4
N.E. Corner, Section 5
T 19 N, R 1 E

Distance between monuments: 177.2'

Original federal closing distance: 273 links (180.2')

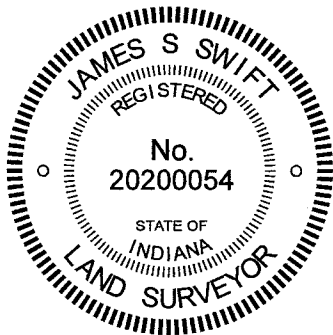
The INDOT Type B monuments were found in place.

A BCS record of June 2-3, 1862 states, with respect to Corner 1, "Set two rocks. One is 7.5 by 7 X. Top rock 28.18 by 10 marked 1." No specific descriptions of Corner 2 were found in the BCS Surveyor's Record beyond the original establishment of the corner as a wood post in 1822 at a point 273 links east of the post found at Corner 1.

A BCS tie card dated 2004 shows both corners as P.K. Nails with washers. A subsequent BCS tie card dated June 22, 2005 shows both corners as Type "C" Monument, in positions which agree precisely with the P.K. Nails shown on the previous tie card.

The INDOT monuments, being Type B monuments (brass plug in monument box), were found in good condition in positions which agree with the previous BCS tie cards. These corners were not excavated, as they fall in a state highway. The Type B monuments were held as marking the respective corners. Corner 1 agrees with local evidence in the form of being at the intersection of the east-west state road and the county road to the north. Corner 2 agrees with local evidence, being in the center of the east-west state road, in line with a fence to the south.

Corner 1 was originally established as a wood post in 1819. Corner 2 was originally established as a wood post in 1822.



Kenneth E. Hedge
Kenneth E. Hedge, County Surveyor

James S. Swift
James S. Swift, IN LS 20200054
January 12, 2020

Clinton Township

Section 32 T20N, R1E	Section 33 T20N, R1E
Section 5 T19N, R1E	Section 4 T19N, R1E

SECTION CORNER RECORD

NE 600-250

BOONE COUNTY SURVEYOR'S OFFICE

State Plane grid coordinates NAD83 (2011):

North: 1777443.52 East: 3137516.38 (U.S. survey feet)

North: 1777445.68 East: 3137668.71 (U.S. survey feet)

Type of monument: INDOT Type B, plug in monument box

Depth: Flush with adjacent road surface

Indiana tie card references:

IN02_T20NR1E33_76 IN02_T19NR1E04_04

① South Quarter Corner
Section 33, T 20 N, R 1 E
INDOT Type B monument found

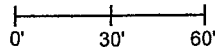
② North Quarter Corner
Section 4, T 19 N, R 1 E
INDOT Type B monument found

Distance between monuments: 152.3'
Average federal closing: 233 links = 153.8'

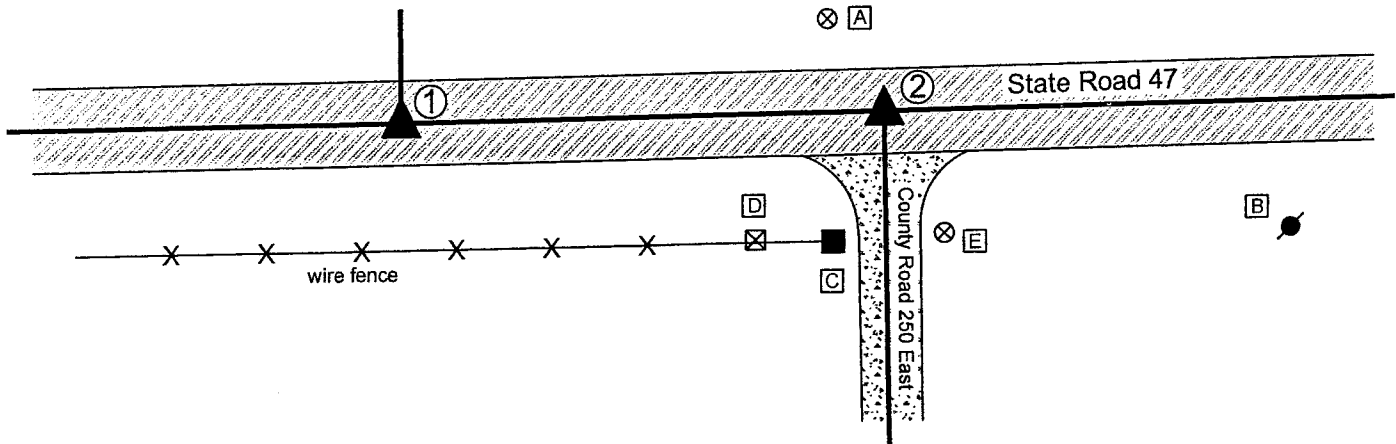


CORNER WITNESS DETAIL

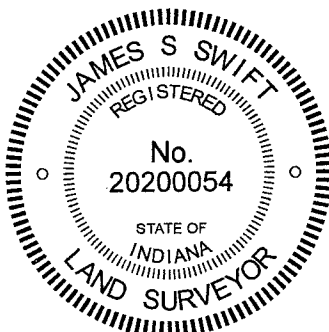
SCALE 1" = 60'



- A - Boone County witness mark, flush, 137.9' to Corner 1, 33.8' to Corner 2,
- B - Mag nail set in W. side power pole, 2' a.g., 281.5' to Corner 1, 132.4' to Corner 2
- C - Mag nail set in N. side wooden end post, 2' a.g., 141.3' to Corner 1, 43.6' to Corner 2
- D - North East Corner Right of Way monument 117.8' to Corner 1, 56.9' to Corner 2
- E - Benchmark, no disk, rebar in concrete, 2" a.g., 174.8' to Corner 1, 42.5' to Corner 2

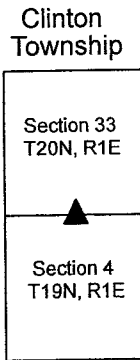


The INDOT Type B monuments were found in place. A BCS record of March 14, 1873 states, with respect to Corner 1, "Set Rock 13.9.5 +." A BCS record of January 19, 1836 shows Corner 2 with no reference of what monument may have been set or held. A BCS record of April 7, 1855 states, with respect to Corner 2, "Stone in the road." A BCS tie card dated 2004 shows both corners as P.K. Nails with washers. A subsequent BCS tie card, dated June 22, 2005, shows both corners as Type "C" Monuments in the same positions as the Nails shown on the previous tie card. The monuments found, being INDOT Type 'B' monuments appear to be the same monuments, in the same positions, as those shown on the 2005 tie cards. The separation of the monuments is 1.5 feet less than the average of the federal closing distances at the northeast and northwest corners of Section 4. The position of the monument at Corner 2 agrees with local evidence of the corner, being at the intersection of the approximate centers of the east-west state road and the county road to the south. No evidence of Corner 1 beyond the east-west state road was found in the immediate vicinity of the corner. The positions of the corners fit well with the relative positions of proximate corners to the east and west. No excavation was performed at these corners, as they fall in a state highway. The existing monuments are held as the best available evidence of the respective corners. Corner 1 was originally set as a wood post in 1819. Corner 2 is not an original federal corner.



Kenneth E. Hedge
Kenneth E. Hedge, County Surveyor

James S. Swift
James S. Swift, IN LS 20200054
January 26, 2021



SECTION CORNER RECORD

NE 600-300

BOONE COUNTY SURVEYOR'S OFFICE

State Plane grid coordinates NAD83 (2011):

Corner 1: North: 1777482.45 East: 3140144.30 (U.S. survey feet)

Corner 2: North: 1777484.65 East: 3140271.66 (U.S. survey feet)

Type of monument: INDOT Type B, plug in monument box

Depth: Flush with adjacent road surface

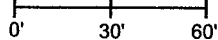
Indiana tie card references:

IN02_T20NR1E33_80 IN02_T20NR1E34_72

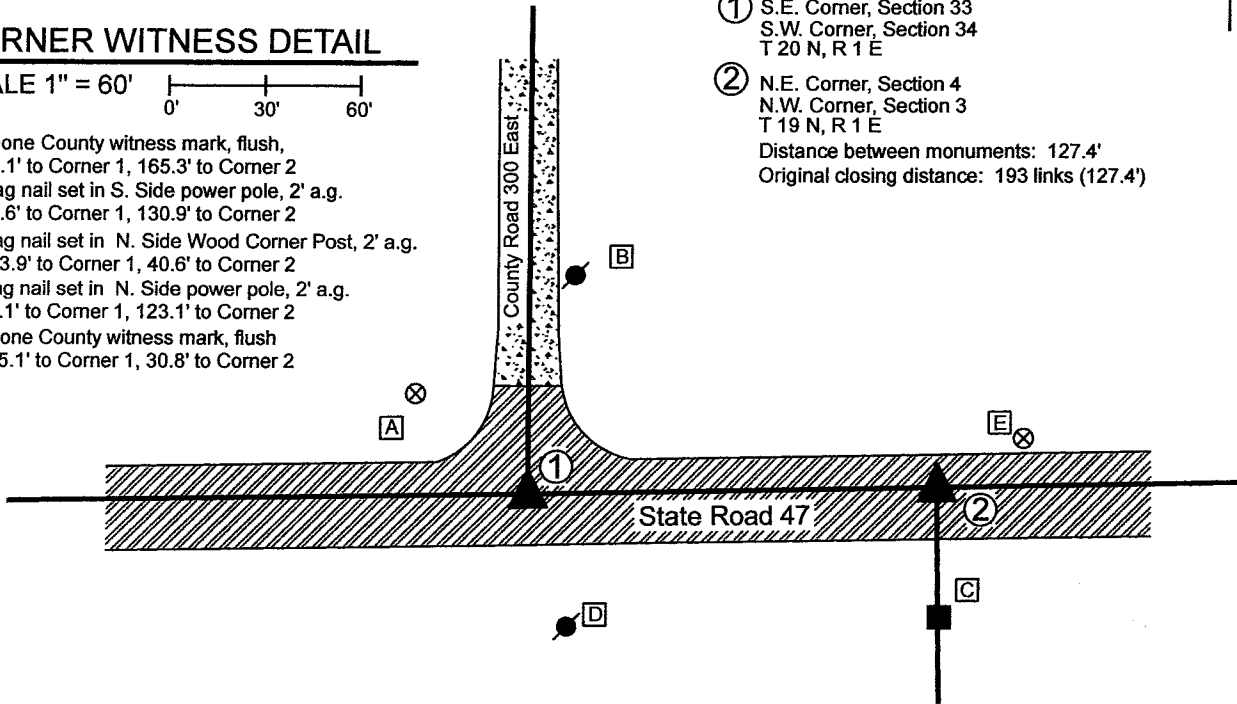
IN02_T19NR1E04_08 IN02_T19NR1E03_00

CORNER WITNESS DETAIL

SCALE 1" = 60'



- A - Boone County witness mark, flush, 47.1' to Corner 1, 165.3' to Corner 2
- B - Mag nail set in S. Side power pole, 2' a.g. 69.6' to Corner 1, 130.9' to Corner 2
- C - Mag nail set in N. Side Wood Corner Post, 2' a.g. 133.9' to Corner 1, 40.6' to Corner 2
- D - Mag nail set in N. Side power pole, 2' a.g. 43.1' to Corner 1, 123.1' to Corner 2
- E - Boone County witness mark, flush 155.1' to Corner 1, 30.8' to Corner 2



① S.E. Corner, Section 33
S.W. Corner, Section 34
T 20 N, R 1 E

② N.E. Corner, Section 4
N.W. Corner, Section 3
T 19 N, R 1 E

Distance between monuments: 127.4'
Original closing distance: 193 links (127.4')



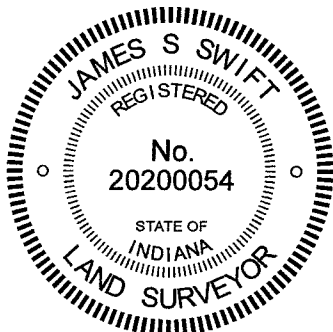
The INDOT Type B monuments were found in place and held as marking the respective corners.

A BCS record of April 7, 1855 states, with respect to Corner 2, "Stone in Road." A BCS record of March 14, 1873 states, with respect to Corner 1, "Found from corner of Sects 4 & 3 where we set the rock deeper and placed one under it, 12.8.6." No distance is provided in these records to indicate the separation of the two monuments, though it is noted that the original federal closing distance recorded in 1822 is 193 links or 127.4 feet.

A BCS tie card dated 2004 shows both corners as P.K. Nail with washers. A subsequent BCS tie card dated June 22, 2005 shows both corners as INDOT Type "C" Monuments, in positions which agree precisely with the P.K. Nails shown on the previous tie card.

The INDOT monuments, being Type B monuments (brass plug in monument box), were found in good condition in positions which agree with the 2005 BCS tie card. These corners were not excavated as the fall in a state highway. The Type B monuments were held as marking the respective corners. Corner 1 agrees with local evidence in the form of being at the intersection of the east-west state road and the county road to the north. Corner 2 agrees with local evidence in the form of being in the center of the east-west state road, immediately north of an old wood corner post on the south side of the road. It is noted that the two corners are separated by the original federal closing distance of 193 links or 127.4 feet.

Corner 1 was originally established as a wood post in 1819. Corner 2 was original established as a wood post in 1822.



Kenneth E. Hedge
Kenneth E. Hedge, County Surveyor

James S. Swift
James S. Swift, IN LS 20200054

January 12, 2020

Clinton Township

Section 33 T20N, R1E	Section 34 T20N, R1E
Section 4 T19N, R1E	Section 3 T19N, R1E

SECTION CORNER RECORD

BOONE COUNTY SURVEYOR'S OFFICE

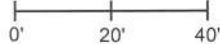
NE 650-300

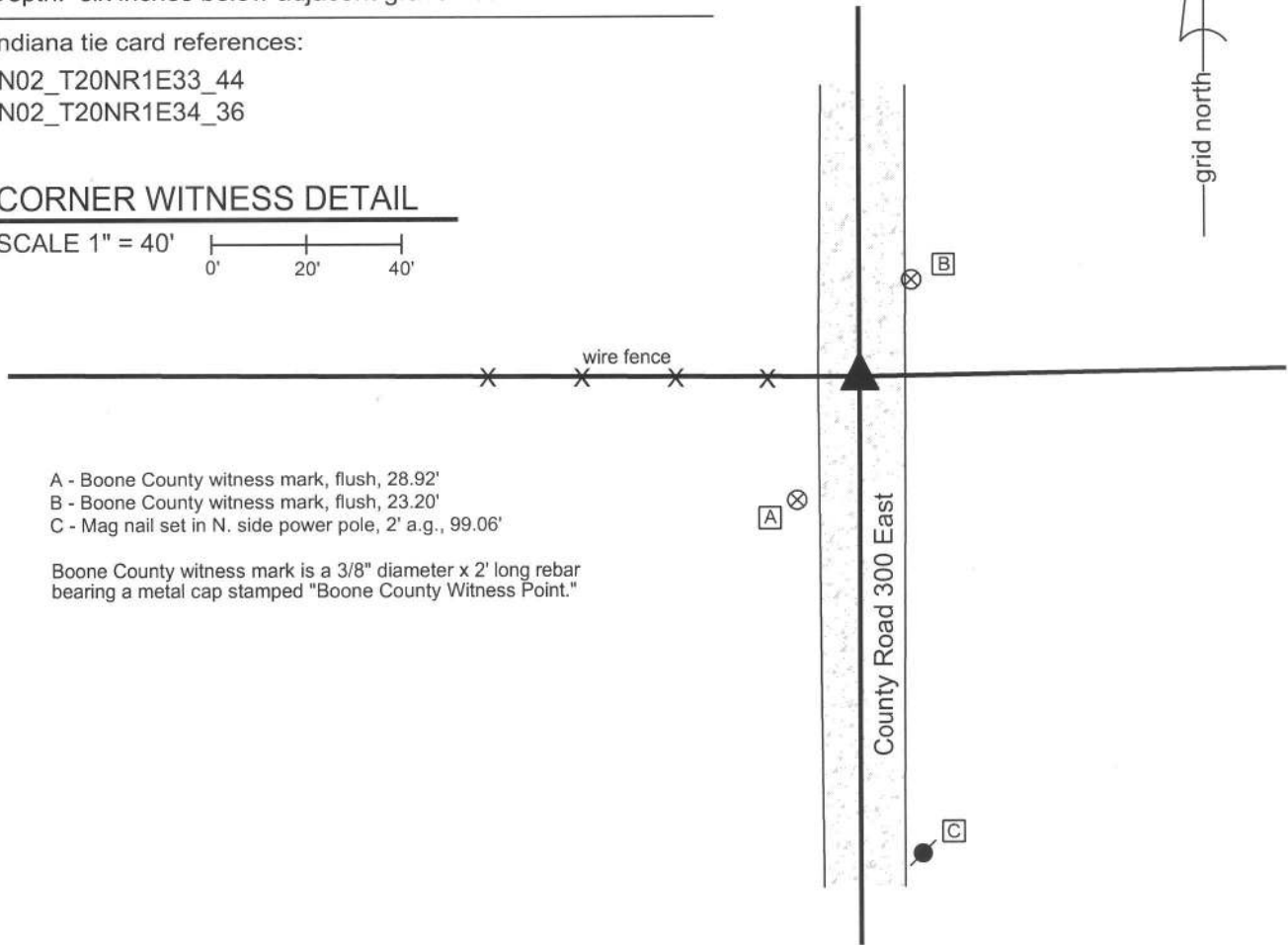
State Plane grid coordinates NAD83 (CORS96):
 North: 1780120.91 East: 3140145.25 (U.S. survey feet)

Type of monument: Harrison, 4" disk 'Section Corner'
 Depth: six inches below adjacent gravel road surface

Indiana tie card references:
 IN02_T20NR1E33_44
 IN02_T20NR1E34_36

CORNER WITNESS DETAIL

SCALE 1" = 40'





- A - Boone County witness mark, flush, 28.92'
- B - Boone County witness mark, flush, 23.20'
- C - Mag nail set in N. side power pole, 2' a.g., 99.06'

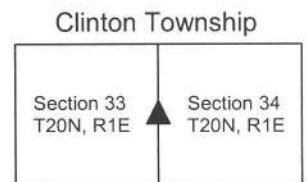
Boone County witness mark is a 3/8" diameter x 2' long rebar bearing a metal cap stamped "Boone County Witness Point."

The harrison monument was set in place of a railroad rail found.
 A BCS record of March 14, 1873 states "ReEst from stumps. Set a Rock 12.9.6+ with one under it 6.6.5+." A BCS tie card dated September, 1975 calls "2 stones found - set rail."
 This corner was excavated on December 3, 2013. Prior to excavation a railroad rail was found, flush with the surface of the gravel road. The rail appeared to have been hit by road grading equipment and was leaning slightly to the south and east. Excavation revealed no further evidence of the corner. It is believed that the stones were most likely removed in 1975 and replaced by the rail, as this is known to have been a common practice by BCS crews in that time frame. A harrison monument was set in the position of the bottom of the rail, as found, 0.7' north and 0.25' west of the position of the top of the rail as it was originally found.
 This corner was originally set as a wood post in 1822.




 Kenneth E. Hedge, County Surveyor


 James S. Swift, IN LS 20200054
 February 5, 2014



SECTION CORNER RECORD

BOONE COUNTY SURVEYOR'S OFFICE

NE 700-200

State Plane grid coordinates NAD83 (CORS96):

North: 1782688.13 East: 3134877.00 (U.S. survey feet)

Type of monument: Harrison, 4" disk 'Section Corner'

Depth: One inch below adjacent road surface

Indiana tie card references:

IN02_T20NR1E29_80 IN02_T20NR1E28_72

IN02_T20NR1E32_08 IN02_T20NR1E33_00

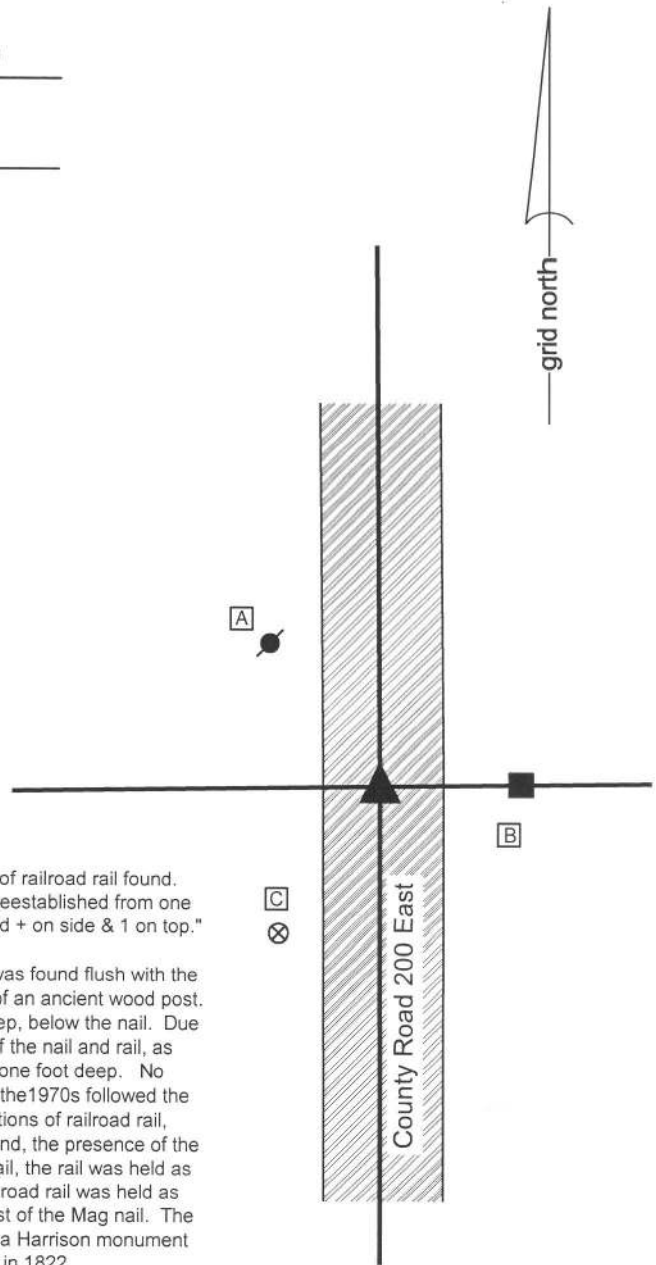
CORNER WITNESS DETAIL

SCALE 1" = 30'

- A - Mag nail set in S.E. side power pole, 2' a.g., 27.1'
- B - Mag nail set in W. side power pole, 1' a.g., 19.7'
- C - Boone County witness mark, flush, 28.0'

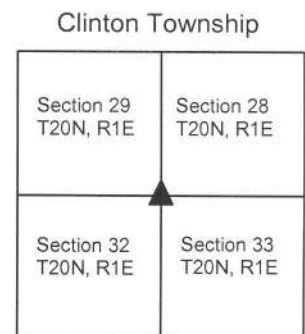
Boone County witness mark is a 3/8" diameter x 2' long rebar bearing a metal cap stamped "Boone County Witness Point."

The Harrison monument was set in place of a Mag nail and a vertical section of railroad rail found. A BCS record dated June 22&23, 1866 states, with respect to this corner, "Reestablished from one tree. Set two Rocks. One 8.6.6 in marked +. Top Rock 16.8.8 inches marked + on side & 1 on top." A BCS tie card dated August, 1970 states "Found small stones - set rail." This corner was excavated on June 3, 2014. Prior to excavation a Mag nail was found flush with the surface of the road, in the approximate center of the road, immediately west of an ancient wood post. Excavation revealed a vertical section of railroad rail found at eight inches deep, below the nail. Due to the presence of a 600 pair phone line crossing the road in one foot south of the nail and rail, as marked by IUPPS, only an area being one foot by one foot was excavated to one foot deep. No further evidence of the corner was found. It is known that BCS field crews of the 1970s followed the practice of removing stones, when found and replacing them with vertical sections of railroad rail, unless otherwise noted. Given this known practice, the call for the stones found, the presence of the rail and the lack of any other evidence found in the immediate vicinity of the rail, the rail was held as providing the best available evidence of the corner. The top, center of the railroad rail was held as the position of the corner, being approximately 0.2 foot north and 0.2 foot east of the Mag nail. The railroad rail was left in place, the top of the rail was anchored in concrete and a Harrison monument was set above the rail. This corner was originally established as a wood post in 1822.



Kenneth E. Hedge
 Kenneth E. Hedge, County Surveyor

James S. Swift
 James S. Swift, IN LS 20200054
 March 27, 2015



SECTION CORNER RECORD

NE 700-300

BOONE COUNTY SURVEYOR'S OFFICE

State Plane grid coordinates NAD83 (CORS96):

North: 1782761.20 East: 3140145.16 (U.S. survey feet)

Type of monument: Harrison, 4" disk 'Section Corner'

Depth: six inches below adjacent gravel road surface

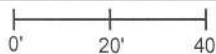
Indiana tie card references:

IN02_T20NR1E28_80 IN02_T20NR1E27_72

IN02_T20NR1E33_08 IN02_T20NR1E34_00

CORNER WITNESS DETAIL

SCALE 1" = 40'

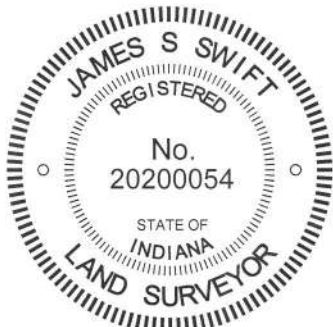
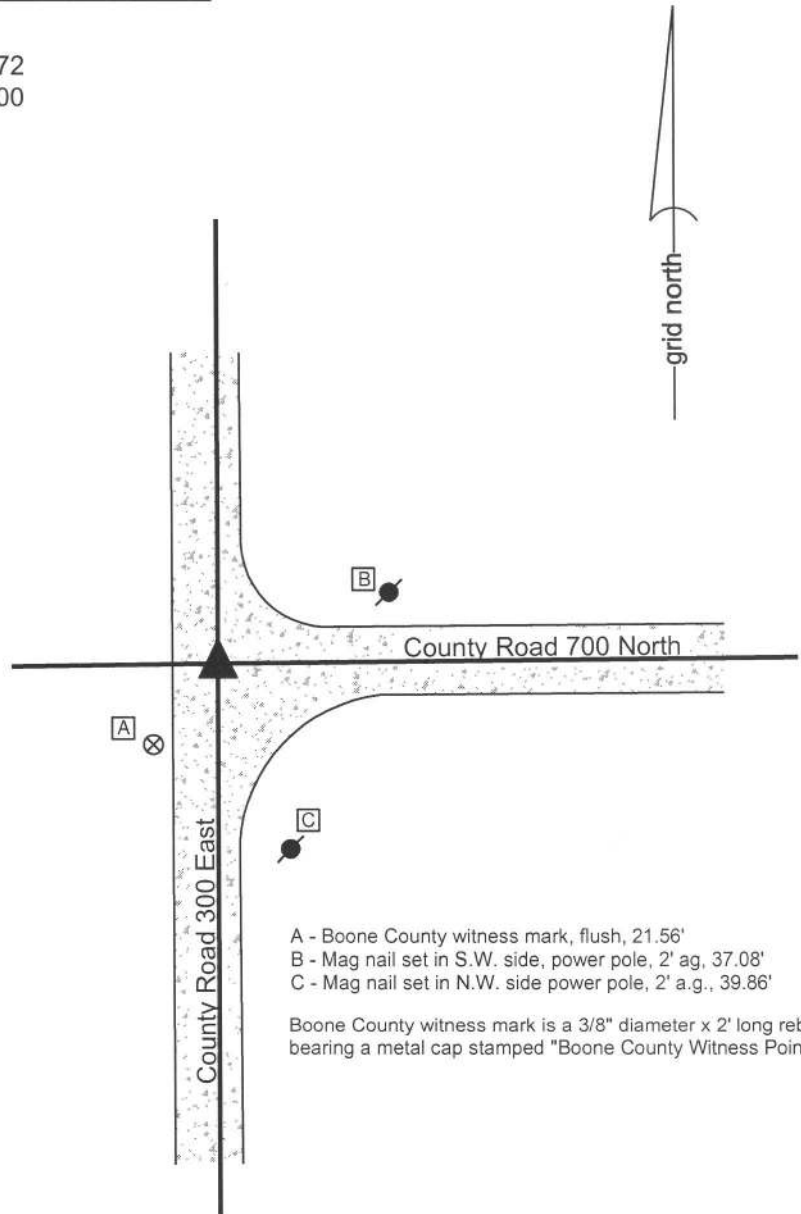


The Harrison monument was set over an etched "+" mark on the top of a stone.

A BCS record dated June 18, 1888 states, with respect to this corner, "Re-est. by the line H to h. Set rock 24, 14, 12 +" It is noted that "the line H to h" refers to the corners approximately 1/2 mile and 1/4 mile south, respectively. A BCS tie card dated September, 1975 states "Found stone Still in RRR" which is interpreted to mean that a stone was found, left in place and a railroad rail was set near to or against the stone.

This corner was excavated on May 21, 2014. Prior to excavation, the top of a section of railroad rail was found at 2 inches below grade, apparently leaning to the south. Excavation revealed another railroad rail, leaning slightly to the north, south and west of the first rail. Further excavation revealed a stone found at 12 inches deep. The rail which had been found first was leaning over the top of the stone. The other rail was approximately 1 foot west of the top of the stone. The stone had a clearly etched "+" mark on the top. With 8 inches of the top of the stone exposed, it measured 12 inches E-W by 10 inches N-S and appeared to be vertical and oriented in cardinal directions. The stone was embedded in the clay layer below the road, protruding approximately 3 inches into the bottom of the road bed. With the top portion of the stone exposed, the dimensions of the stone approximated the 1888 record dimensions and it is expected that complete excavation would demonstrate that the stone is of very similar dimensions as called for in the 1888 record. With the similar dimensions and the obvious mark, the stone was accepted as being the same rock set in 1888 and was held as marking the corner. The stone was left in place, the two sections of railroad rail were removed and a Harrison monument was set directly over the etched "+" mark on the top of the stone.

This corner was originally established as a wood post in 1822.



Kenneth E. Hedge
 Kenneth E. Hedge, County Surveyor

James S. Swift
 James S. Swift, IN LS 20200054
 March 27, 2015

Clinton Township

Section 28 T20N, R1E	Section 27 T20N, R1E
Section 33 T20N, R1E	Section 34 T20N, R1E

PHOTOGRAPHIC DOCUMENTATION

Date of photography: May 21, 2014

The tops of the two found rails.



View from above the stone looking East along County Road 700 North.



The stone from above and west, washed.



The same picture as above with the etched "+" mark enhanced for ease of visual detection.



View from the north looking across the stone and south along County Road 300 East.



For details and documentation, refer to related sheet "Section Corner Record."