

SECTION CORNER RECORD

NW 600-400

BOONE COUNTY SURVEYOR'S OFFICE

State Plane grid coordinates NAD83 (2011):

Corner 1: North: 1777297.42 East: 3103645.11 (U.S. survey feet)

Corner 2: North: 1777297.40 East: 3103672.75 (U.S. survey feet)

Corner 1: Mag nail with "Boone County Surveyor" washer, flush

Corner 2: INDOT Type B monument, flush with adjacent road

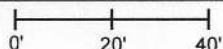
Indiana tie card references:

IN02_T20NR1W33_72 IN02_T20NR1W32_80

IN02_T19NR1W05_08 IN02_T19NR1W04_00

CORNER WITNESS DETAIL

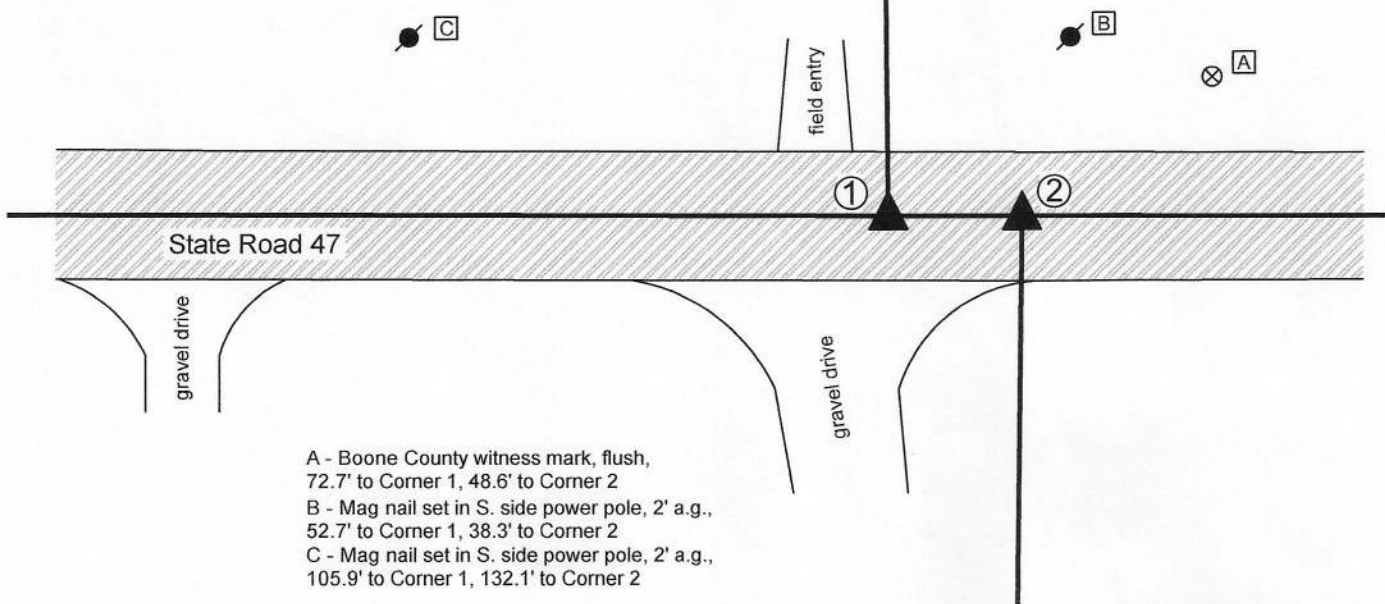
SCALE 1" = 40'



① S.E. Corner, Section 32
S.W. Corner, Section 33
T 20 N, R 1 W

② N.W. Corner, Section 4
N.E. Corner, Section 5
T 19 N, R 1 W

Distance between monuments: 27.64'
Original offset = 42 links (27.72')



- A - Boone County witness mark, flush, 72.7' to Corner 1, 48.6' to Corner 2
- B - Mag nail set in S. side power pole, 2' a.g., 52.7' to Corner 1, 38.3' to Corner 2
- C - Mag nail set in S. side power pole, 2' a.g., 105.9' to Corner 1, 132.1' to Corner 2

The INDOT Type B monument at Corner 2 was found in place and held as the corner. The Mag nail set at Corner 1 was set with respect to information shown on a previous BCS tie card dated June 22, 2005.

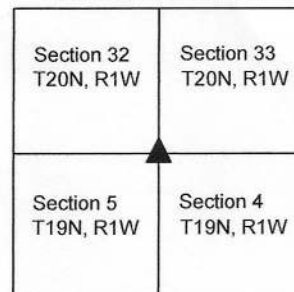
The original federal notes for Township 19 North, Range 1 West note an offset of 42 links east for the closing corner. A BCS Record of April 11-12, 1862, states, with respect to Corner 1, "Found stake set 42 links of Corner, Sects. 4 & 5." No specific descriptions of Corner 2 were found in the BCS Surveyor's record beyond the original establishment of the corner in 1829 and the reference in the 1862 record for Corner 1. A BCS tie card dated June 22, 2005 shows railroad spikes at both corners. It is believed that the railroad spike at Corner 2 was replaced with the Type B monument in 2006. The railroad spike at Corner 1 was not replaced with a monument at that time. Corner 1 was established on the prolongation of the township line as defined by Corner 2 and a Type B monument at the south quarter corner of Section 32 (see BCS Corner NW 600-350) at 27.64 feet, per the 2005 tie card. A Mag nail with washer was set at this position on August 27, 2020. No large scale excavation was performed as these corners fall in a state road. This documentation will be presented to INDOT to request the establishment of an INDOT section corner monument during the next resurfacing project on this part of S.R. 47.



Kenneth E. Hedge
Kenneth E. Hedge, County Surveyor

James S. Swift
James S. Swift, IN LS 20200054
September 2, 2020

Washington Township



SECTION CORNER RECORD

NW 600-450

BOONE COUNTY SURVEYOR'S OFFICE

State Plane grid coordinates NAD83 (2011):

Corner 1: North: 1777303.74 East: 3100996.91 (U.S. survey feet)

Corner 2: North: 1777303.73 East: 3101010.78 (U.S. survey feet)

Corner 1: Mag nail with "Boone County Surveyor" washer, flush

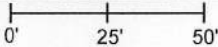
Corner 2: INDOT Type B monument, flush

Indiana tie card references:

IN02_T20NR1W32_76 IN02_T19NR1W05_04

CORNER WITNESS DETAIL

SCALE 1" = 50'



A - Boone County witness mark, flush,
42.3' to Corner 1, 34.3' to Corner 2

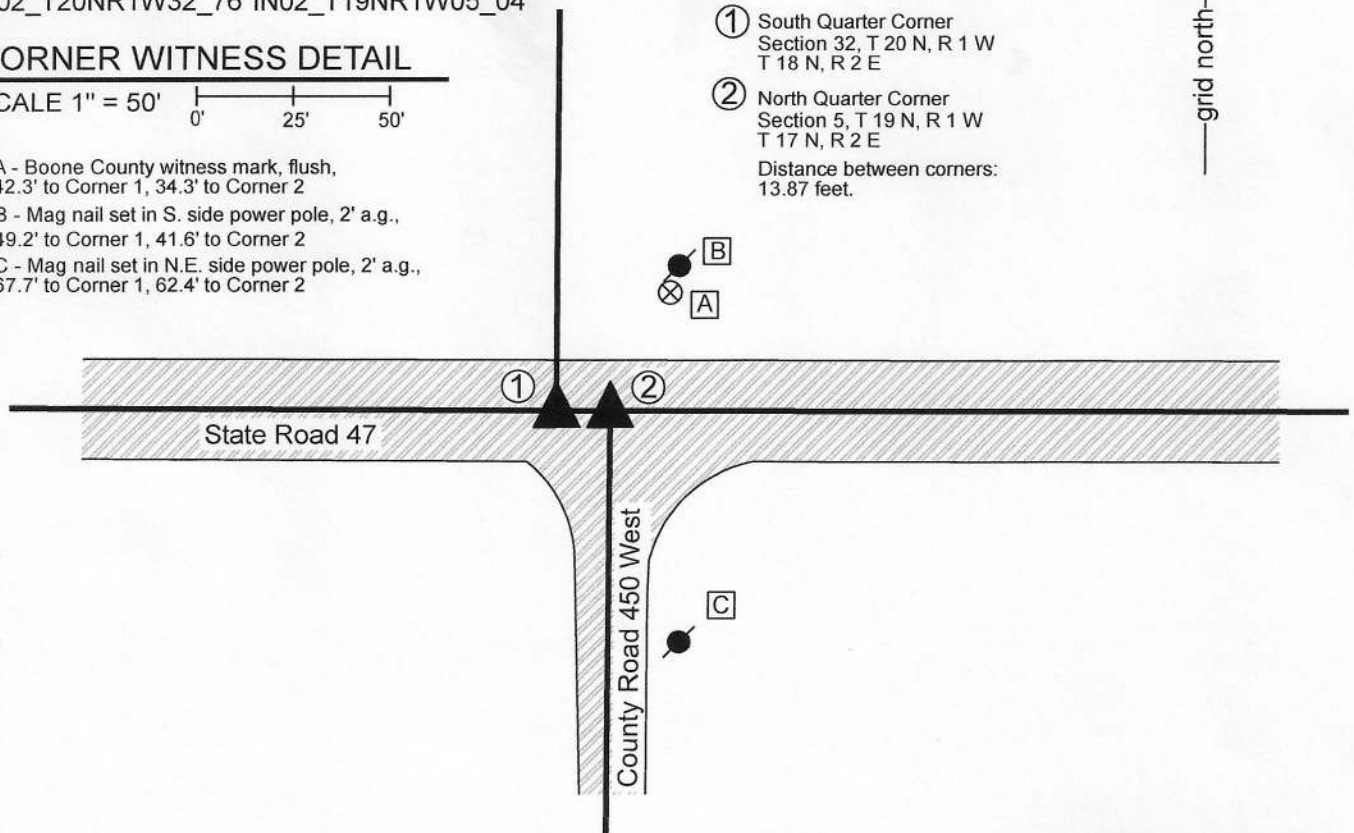
B - Mag nail set in S. side power pole, 2' a.g.,
49.2' to Corner 1, 41.6' to Corner 2

C - Mag nail set in N.E. side power pole, 2' a.g.,
67.7' to Corner 1, 62.4' to Corner 2

① South Quarter Corner
Section 32, T 20 N, R 1 W
T 18 N, R 2 E

② North Quarter Corner
Section 5, T 19 N, R 1 W
T 17 N, R 2 E

Distance between corners:
13.87 feet.



The INDOT Type B monument at Corner 2 was found in place and held as marking the corner. The Mag nail at Corner 1 was set with respect to information shown on a BCS tie card dated June 22, 2005.

Corner 1 was set in 1819. Corner 2 is not an original federal corner. The average of the closing distances for the northeast and northwest corners of section 5 is 21 links, nearly identical to the 13.87 offset shown on the 2005 BCS tie card.

No specific descriptions of Corner 1 were found in the BCS Surveyor's Record beyond the original establishment of the corner in 1819. A BCS Record dated February 6, 1903 states, with respect to Corner 2, "Set Rocks 6 ft. South and 6ft. North of Corner. Also a Rock at B." In this record, "B" refers to Corner 2. The 2005 BCS tie card shows Corner 1 as a PK Nail and Corner 2 as a rebar. It is believed that Corner 2 was replaced with a Type B monument in 2006 during a resurfacing project on State Road 47. No monument was set at Corner 1 at that time. The monument at Corner 2 was held as marking that corner and Corner 1 was established at 13.87 feet west on the township line as defined by Corner 2 and a Mag nail set at the southeast corner of Section 32 (see BCS Corner NW 600-400). A Mag nail with washer was set at this position on August 27, 2020. No large scale excavation was performed as these corner fall in a state road. This documentation will be presented to INDOT to request the establishment of an INDOT section corner monument during the next resurfacing project on this part of S.R. 47.



Kenneth E. Hedge
Kenneth E. Hedge, County Surveyor

James S. Swift
James S. Swift, IN LS 20200054
September 2, 2020

Washington
Township

Section 32
T20N, R1W

Section 5
T19N, R1W

SECTION CORNER RECORD

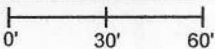
BOONE COUNTY SURVEYOR'S OFFICE

NW 600-500

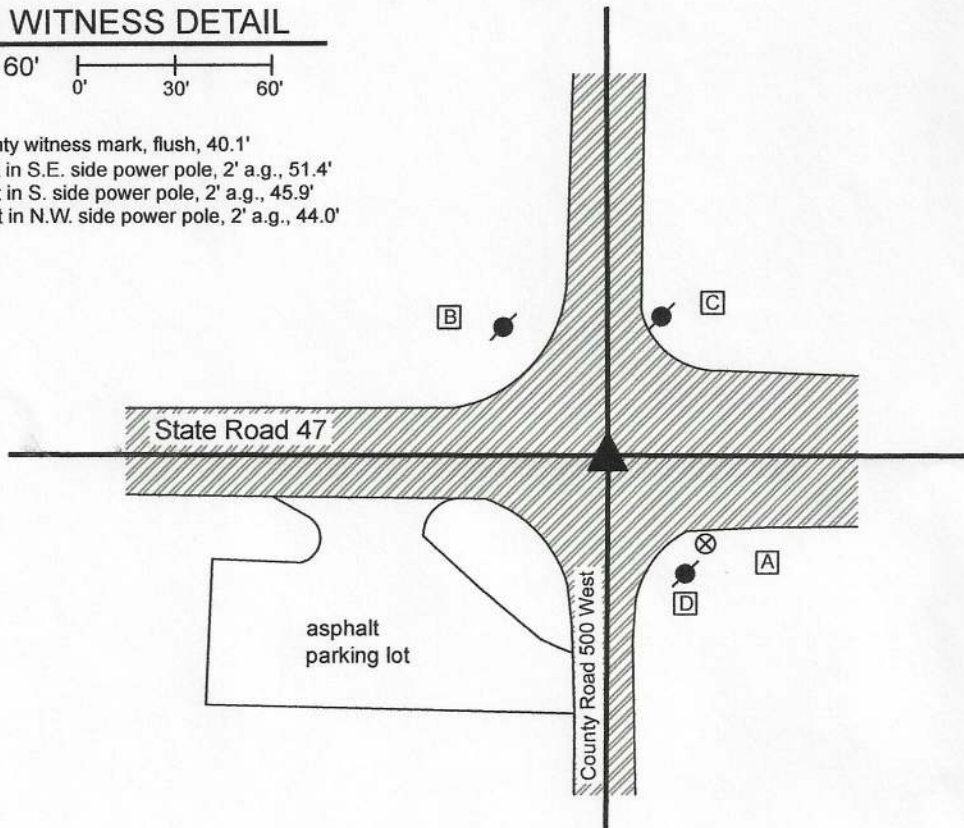
State Plane grid coordinates NAD83 (2011):
 North: 1777316.20 East: 3098345.81 (U.S. survey feet)
 Type of monument: Plug in monument box, INDOT Type B
 Depth: flush with adjacent road surface

Indiana tie card references:
 IN02_T20NR1W31_80 IN02_T20NR1W32_72
 IN02_T19NR1W06_08 IN02_T19NR1W05_00

CORNER WITNESS DETAIL

SCALE 1" = 60' 

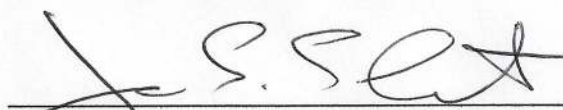
- A - Boone County witness mark, flush, 40.1'
- B - Mag nail set in S.E. side power pole, 2' a.g., 51.4'
- C - Mag nail set in S. side power pole, 2' a.g., 45.9'
- D - Mag nail set in N.W. side power pole, 2' a.g., 44.0'



The INDOT Type B monument was found in place and held as marking the corner.
 No specific descriptions of this corner were found in the BCS Surveyor's Record beyond the original establishment of the corner as a wood post in 1819. Though on a township line, this corner represents a common corner for the sections in township 20 north and township 19 north, as the notes for the subdivision of township 19 north, range 1 west, 1829, state that the closing corner fell "at post" and no township line offset was recorded.
 A BCS tie card dated June 22, 2005 shows the corner as a PK Nail in the center of the intersection of the two roads. At some point between that date and January 2, 2007 (exact date not known), the PK nail was replaced with an INDOT Type B monument in the same position. As this corner falls in a state road, no significant excavation was performed. The INDOT Type B monument is held as marking the corner.




 Kenneth E. Hedge, County Surveyor


 James S. Swift, IN LS 20200054

June 1, 2020

Washington Township

Section 31 T20N, R1W	Section 32 T20N, R1W
Section 6 T19N, R1W	Section 5 T19N, R1W

SECTION CORNER RECORD

NW 650-400

BOONE COUNTY SURVEYOR'S OFFICE

State Plane grid coordinates NAD83 (2011):

North: 1779940.60 East: 3103627.99 (U.S. survey feet)

Type of monument: Harrison, 4" disk 'Section Corner'

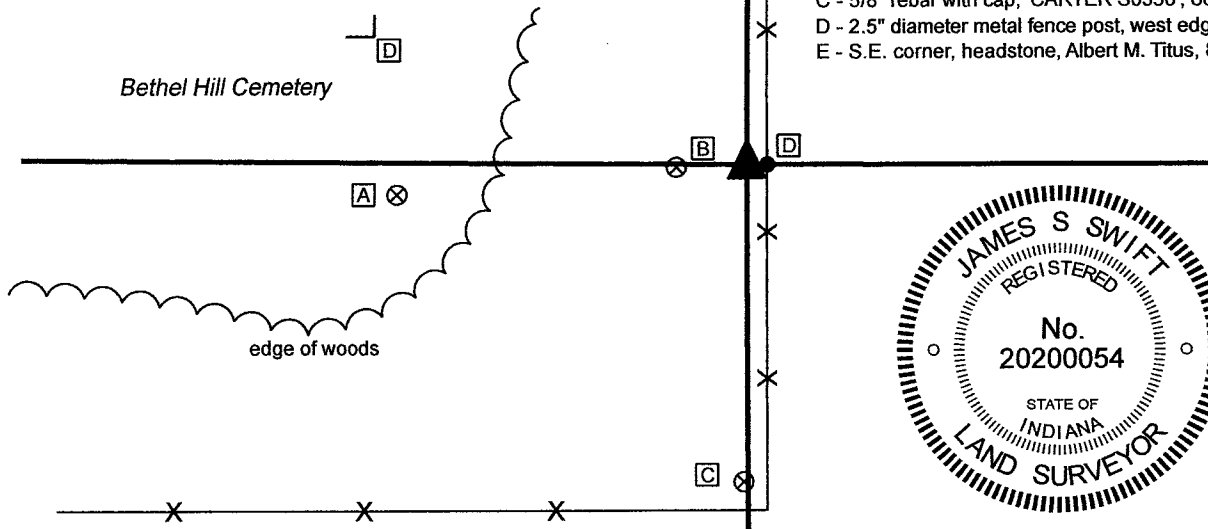
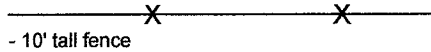
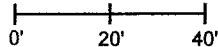
Depth: Three inches above surrounding ground

Indiana tie card references:

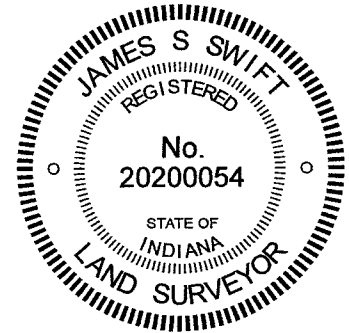
IN02_T20NR1W32_44 IN02_T20NR1W33_36

CORNER WITNESS DETAIL

SCALE 1" = 40'



- A - Boone County witness mark, flush, 73.3'
- B - Uncapped 5/8" rebar, 14.8'
- C - 5/8" rebar with cap, 'CARTER S0350', 66.0'
- D - 2.5" diameter metal fence post, west edge, 4.3'
- E - S.E. corner, headstone, Albert M. Titus, 82.2'



The Harrison monument was set in place of a wood corner post found. No specific description of this corner was found in the BCS Surveyor's Record beyond the original establishment of the corner as a wood post in 1829. However, the corner is mentioned in a record of April 11-12, 1862 which states that the corner is "A little east of road. Found point, drove no stake." No recent BCS tie cards were found referencing the corner. A survey recorded in Survey Book 3, pages 11-16 in the Office of the Boone County Recorder states that a 5/8-inch rebar was found one foot north of a fence corner post and held as marking the corner. The deed description in Instrument 20090000175 in said Recorder's Office (adjoining land to the southeast) calls the corner as a post. The deed description in Instrument 201400006332 (nearby, to the northwest, tied to this corner) references the corner as a wooden headpost.

Both the rebar called in the referenced survey and the post called in the referenced deeds were found in the field. The rebar is 14.8 feet west of the post. The rebar is, indeed, adjacent to a wood post, but this does not appear to be corner post. The post called in the deeds, the position of which was confirmed by numerous monuments found marking corners of the two respective parcels described by the deeds, is at the intersection of old fences to the south, north and east. The fence to the south is ill defined, and appears to bear slightly southwest from the corner. The rebar falls generally in-line with the center of a short segment of roadway to the north. The post is east of the roadway, matching the 1862 reference that the corner was east of the road. No reliable evidence was found to support the position of the uncapped rebar as representing the corner. The wood corner post has clearly been held as marking the corner for deed descriptions in the area. The position of the post also works with respect to old fencing on the south, east and west sides of the adjacent Bethel Hill Cemetery with respect to the description in Deed Book 202, page 325, which calls for an exception of 4 rods north-south by 20 rods east-west in the northeast corner of the southeast quarter of Section 32. It is noted that a straight line connecting evidence of the northeast and southeast corners of Section 32 falls yet further east than the post. The wood corner post was held as the best available evidence of the corner. By April, 2021, the post was no longer attached to the ground and was in a standing position only as supported by standing fencing. The post was removed and a Harrison monument was set partially over and partially in place of the subterranean base of the post on April 22, 2021.

It is noted that the existing ten-foot tall fence shown as being east of the corner on this sketch is known to have been purposely set off the line and that said fencing was installed only after surveyor Jerry L. Carter, S0350, had staked the line. Although no survey is available showing Mr. Carter's work in this immediate vicinity, it is apparent that he held the post as marking the corner. The tall fence is not in-line with older, traditional wire fence, which is partially present to the east, north and south of the corner, but not shown hereon.

Washington Township

Section 32 T20N, R1W	Section 33 T20N, R1W
-------------------------	-------------------------

Kenneth E. Hedge, County Surveyor

James S. Swift, IN LS 20200054 May 11, 2021