

# SECTION CORNER RECORD

# NE 600-100

## BOONE COUNTY SURVEYOR'S OFFICE

State Plane grid coordinates NAD83 (2011):

Corner 1: North: 1777337.73 East: 3129618.11 (U.S. survey feet)

Corner 2: North: 1777340.10 East: 3129793.16 (U.S. survey feet)

Type of monument: Plug in monument box, INDOT Type B

Depth: One inch below adjacent road surface

Indiana tie card references:

IN02\_T20NR1E32\_72 IN02\_T20NR1E31\_80

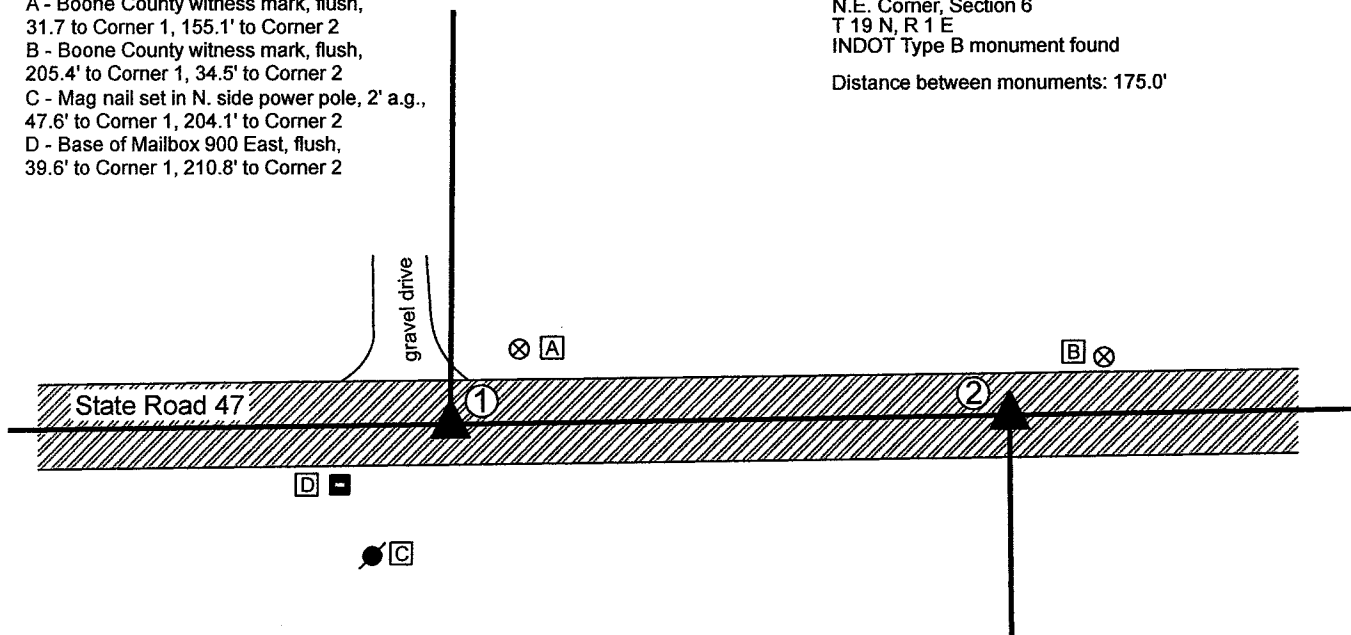
IN02\_T19NR1E06\_08 IN02\_T19NR1E05\_00

### CORNER WITNESS DETAIL

SCALE 1" = 60'

- A - Boone County witness mark, flush, 31.7' to Corner 1, 155.1' to Corner 2
- B - Boone County witness mark, flush, 205.4' to Corner 1, 34.5' to Corner 2
- C - Mag nail set in N. side power pole, 2' a.g., 47.6' to Corner 1, 204.1' to Corner 2
- D - Base of Mailbox 900 East, flush, 39.6' to Corner 1, 210.8' to Corner 2

- ① S.E. Corner, Section 31  
S.W. Corner, Section 32  
T 20 N, R 1 E  
INDOT Type B monument found
  - ② N.W. Corner, Section 5  
N.E. Corner, Section 6  
T 19 N, R 1 E  
INDOT Type B monument found
- Distance between monuments: 175.0'



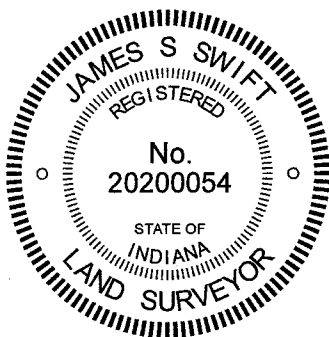
The INDOT Type B monuments were found in place and held as marking the respective corners.

A BCS record of June 2-3, 1862 states, with respect to Corner 1, "Found by measuring the lap from corners Sections 5&6 where found a stone and one tree. Set two Rocks at G. One 8.7 by 5. Top one 24.16 by 8 in." No specific descriptions of Corner 2 were found in the BCS Surveyor's Record beyond the original establishment of the corner as a wood post in 1822, 265 links east of Corner 1, though the corner is referenced in the 1862 record for Corner 1.

A BCS tie card dated June 22, 2005 shows both corners at Type "C" monuments.

The found monuments, being INDOT Type B monuments, fit with the 2005 tie card and also fit with evidence of occupation in the form of the edge of a field and lawn to the north and a field division to the south, respectively. The distance between the monuments fits within 0.2 foot of the original federal closing distance of 265 links. No excavation was performed at these corners as they fall in a state road. The found Type B monuments were held as marking the respective corners.

Corner 1 was originally established as a wood post in 1819. Corner 2 was originally established as a wood post in 1822.



*Kenneth E. Hedge*  
Kenneth E. Hedge, County Surveyor

*James S. Swift*  
James S. Swift, IN LS 20200054  
December 20, 2021

Clinton Township

Section 31 T20N, R1E	Section 32 T20N, R1E
Section 6 T19N, R1E	Section 5 T19N, R1E

# SECTION CORNER RECORD

NE 600-150

## BOONE COUNTY SURVEYOR'S OFFICE

State Plane grid coordinates NAD83 (2011):

Corner 1: North: 1777372.77 East: 3132253.23 (U.S. survey feet)

Corner 2: North: 1777374.98 East: 3132428.64 (U.S. survey feet)

Type of monument: INDOT Type B, plug in monument box

Depth: Flush with adjacent road surface

Indiana tie card references:

IN02\_T20NR1E32\_76

IN02\_T19NR1E05\_04

### CORNER WITNESS DETAIL

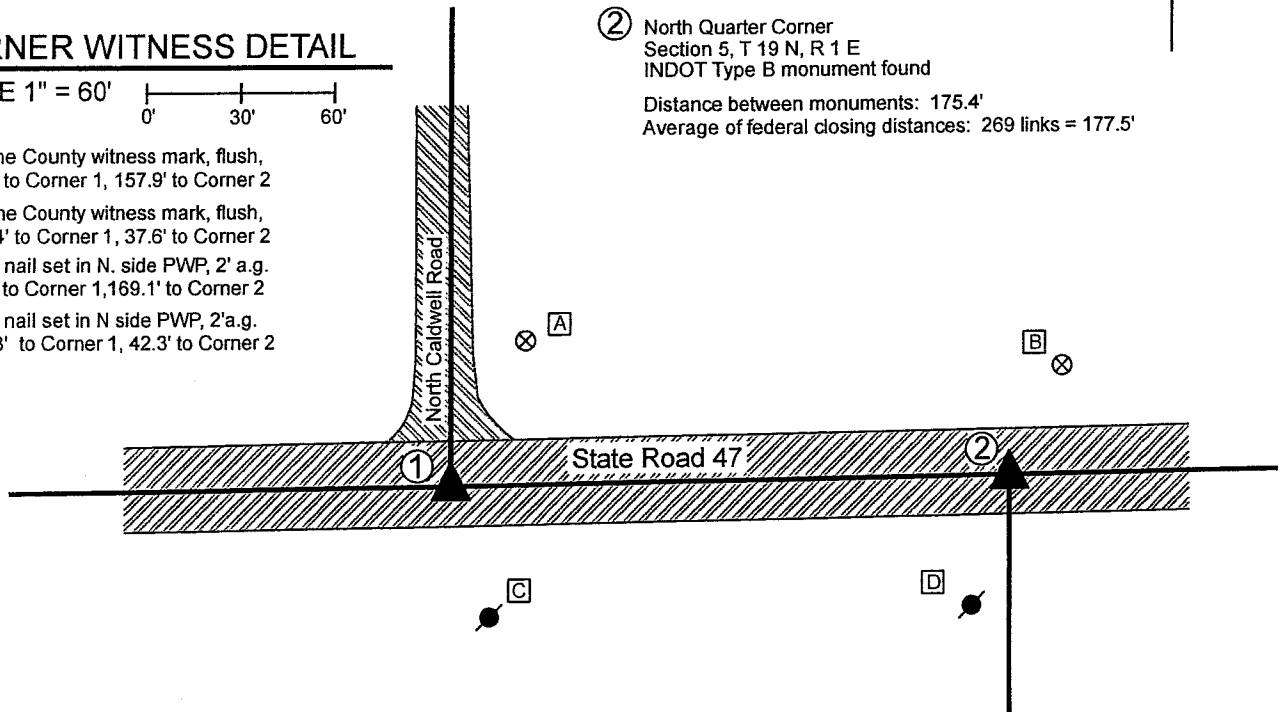
SCALE 1" = 60'

- A - Boone County witness mark, flush, 50.7' to Corner 1, 157.9' to Corner 2
- B - Boone County witness mark, flush, 195.4' to Corner 1, 37.6' to Corner 2
- C - Mag nail set in N. side PWP, 2' a.g. 42.5' to Corner 1, 169.1' to Corner 2
- D - Mag nail set in N side PWP, 2'a.g. 167.8' to Corner 1, 42.3' to Corner 2

① South Quarter Corner  
Section 32, T 20 N, R 1 E  
INDOT Type B monument found

② North Quarter Corner  
Section 5, T 19 N, R 1 E  
INDOT Type B monument found

Distance between monuments: 175.4'  
Average of federal closing distances: 269 links = 177.5'

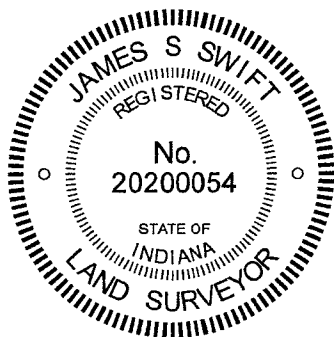


The INDOT Type B monuments were found in place.

A BCS record of June 5, 1862 states, with respect to Corner 1, "Set two rocks. One is 7.5 by 5 in X. Top rock 28.18 by 10 in. marked 1." No specific descriptions of Corner 2 were found in the BCS Surveyor's Record.

A BCS tie card dated June 22, 2005 shows both corners as Type "C" Monuments. The monuments found, being INDOT Type 'B' monuments, appear to be the same monuments, in the same positions, as those shown on the 2005 tie cards. The separation of the monuments is approximately 2 feet less than the average of the federal closing distances at the northeast and northwest corners of Section 5. The origin of the Type B monuments is not known, though they are believed to have been installed in 2004 or 2005 in the position of nails previously marking the corners. The position of the monument at Corner 1 agrees with local evidence of the corner, being at the intersection of the approximate centers of the east-west state road and the county road to the north. No evidence of Corner 2 beyond the east-west state road was found in the immediate vicinity of the corner. The positions of the corners fit well with the relative positions of proximate corners to the east and west.

No excavation was performed at these corners, as they fall in a state highway. The existing monuments are held as the best available evidence of the respective corners. Corner 1 was originally set as a wood post in 1819. Corner 2 is not an original federal corner.



*Kenneth E. Hedge*  
 Kenneth E. Hedge, County Surveyor

*James S. Swift*  
 James S. Swift, IN LS 20200054  
 January 26, 2021

Clinton Township

Section 32  
T20N, R1E

Section 5  
T19N, R1E

# SECTION CORNER RECORD

NE 600-200

## BOONE COUNTY SURVEYOR'S OFFICE

State Plane grid coordinates NAD83 (2011):

Corner 1: North: 1777408.36 East: 3134886.33 (U.S. survey feet)

Corner 2: North: 1777410.73 East: 3135063.54 (U.S. survey feet)

Type of monument: INDOT Type B, plug in monument box

Depth: flush with adjacent road surface

Indiana tie card references:

IN02\_T20NR1E32\_80 IN02\_T20NR1E33\_72

IN02\_T19NR1E05\_08 IN02\_T19NR1E04\_00

### CORNER WITNESS DETAIL

SCALE 1" = 60'

A - Mag Nail set in E. edge, guard rail post  
33.6' to Corner 1, 195.7' to Corner 2

B - Boone County witness mark, flush,  
41.6' to Corner 1, 142.2' to Corner 2

C - Mag nail set in S. side PWP 2' a.g.  
49.4' to Corner 1, 151.2' to Corner 2

D - Mag nail set in S. side PWP 3.5' a.g.  
203.2' to Corner 1, 44.9' to Corner 2

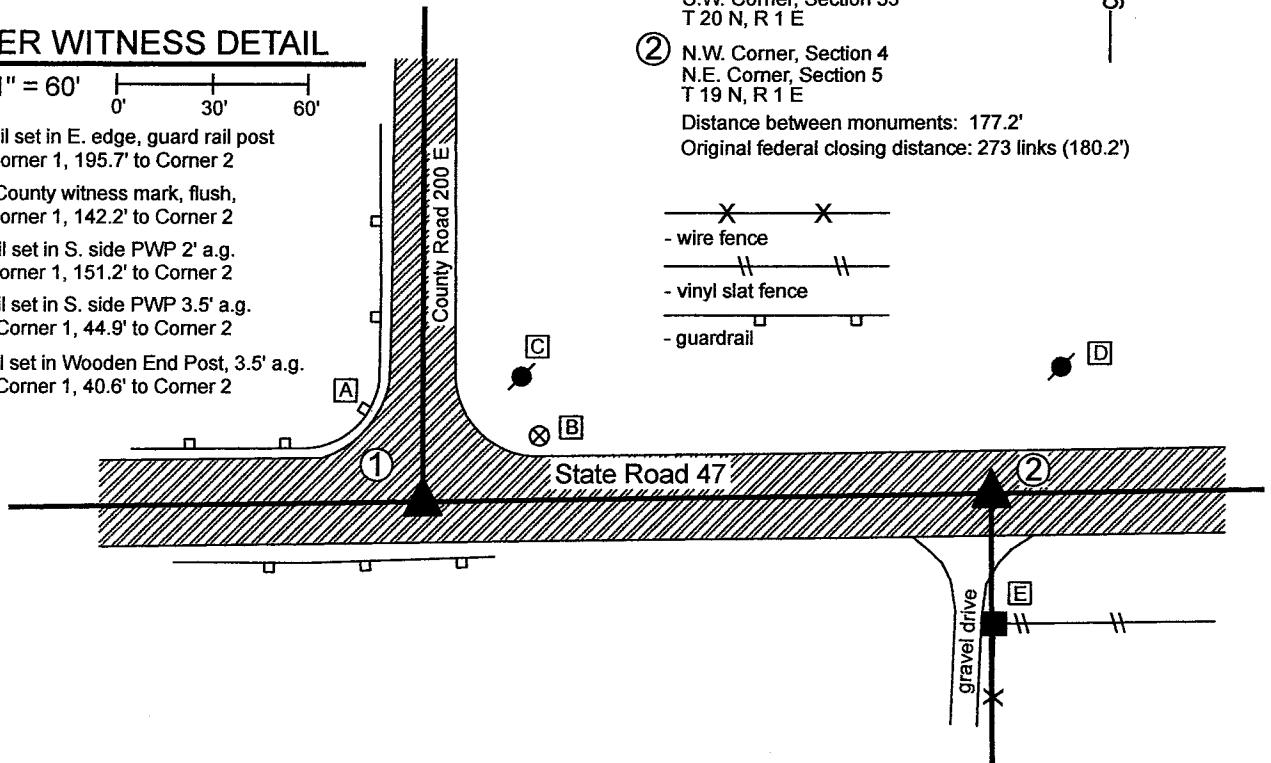
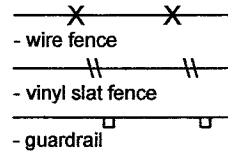
E - Mag nail set in Wooden End Post, 3.5' a.g.  
182.6' to Corner 1, 40.6' to Corner 2

① S.E. Corner, Section 32  
S.W. Corner, Section 33  
T 20 N, R 1 E

② N.W. Corner, Section 4  
N.E. Corner, Section 5  
T 19 N, R 1 E

Distance between monuments: 177.2'

Original federal closing distance: 273 links (180.2')



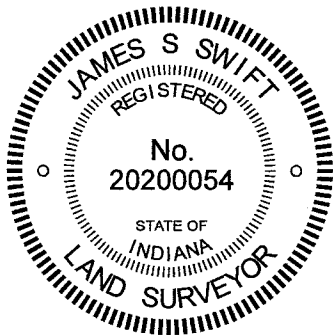
The INDOT Type B monuments were found in place.

A BCS record of June 2-3, 1862 states, with respect to Corner 1, "Set two rocks. One is 7.5 by 7 X. Top rock 28.18 by 10 marked 1." No specific descriptions of Corner 2 were found in the BCS Surveyor's Record beyond the original establishment of the corner as a wood post in 1822 at a point 273 links east of the post found at Corner 1.

A BCS tie card dated 2004 shows both corners as P.K. Nails with washers. A subsequent BCS tie card dated June 22, 2005 shows both corners as Type "C" Monument, in positions which agree precisely with the P.K. Nails shown on the previous tie card.

The INDOT monuments, being Type B monuments (brass plug in monument box), were found in good condition in positions which agree with the previous BCS tie cards. These corners were not excavated, as they fall in a state highway. The Type B monuments were held as marking the respective corners. Corner 1 agrees with local evidence in the form of being at the intersection of the east-west state road and the county road to the north. Corner 2 agrees with local evidence, being in the center of the east-west state road, in line with a fence to the south.

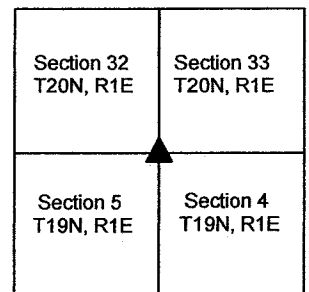
Corner 1 was originally established as a wood post in 1819. Corner 2 was originally established as a wood post in 1822.



*Kenneth E. Hedge*  
Kenneth E. Hedge, County Surveyor

*James S. Swift*  
James S. Swift, IN LS 20200054  
January 12, 2020

Clinton Township



# SECTION CORNER RECORD

## BOONE COUNTY SURVEYOR'S OFFICE

NE 650-100

State Plane grid coordinates NAD83 (2011):  
 North: 1779975.21 East: 3129622.37 (U.S. survey feet)

Type of monument: + mark on granite stone  
 Depth: 2 inches below adjacent ground

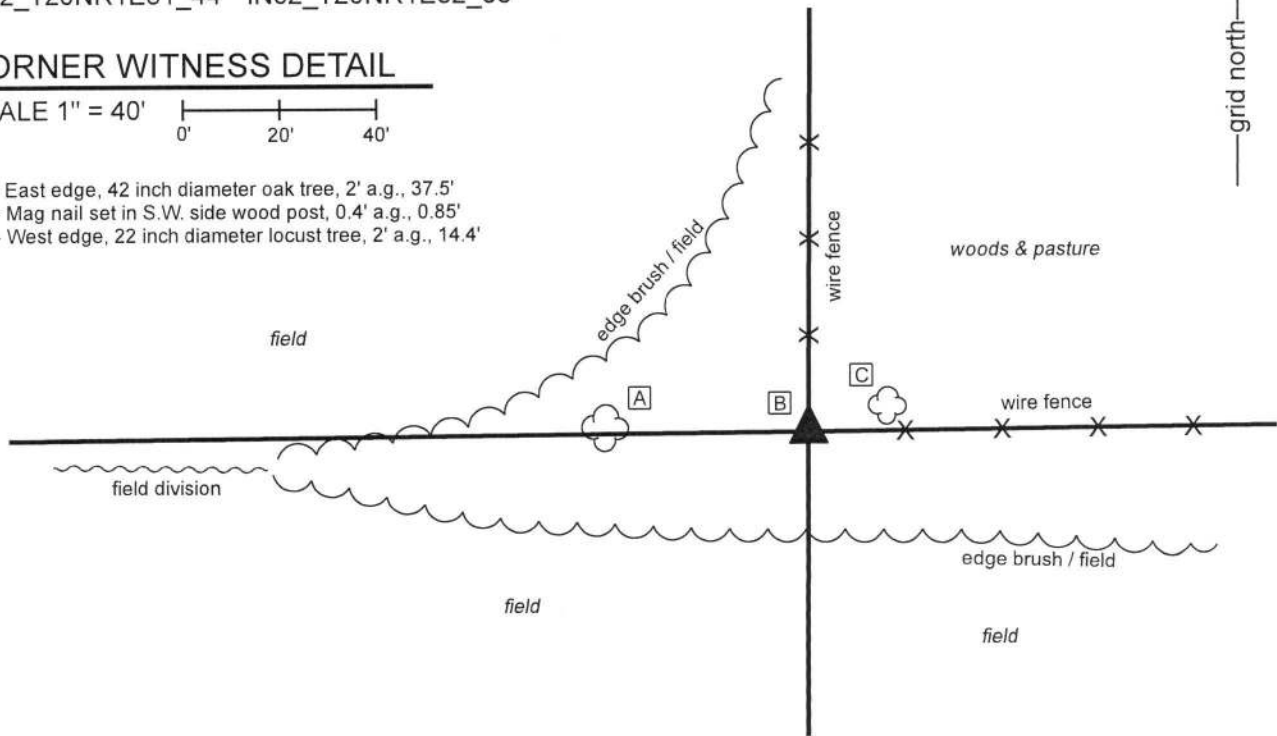
Indiana tie card references:  
 IN02\_T20NR1E31\_44 IN02\_T20NR1E32\_36



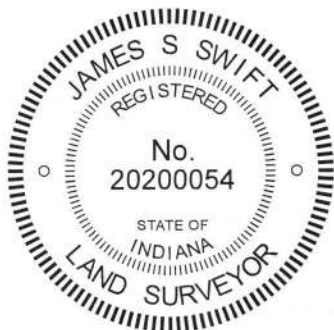
### CORNER WITNESS DETAIL

SCALE 1" = 40'

- A - East edge, 42 inch diameter oak tree, 2' a.g., 37.5'
- B - Mag nail set in S.W. side wood post, 0.4' a.g., 0.85'
- C - West edge, 22 inch diameter locust tree, 2' a.g., 14.4'

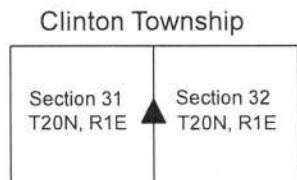


The stone was found in place. This stone is described in a BCS record of June 2-3, 1862, which states "Reestablished from sugar and roots of ash. Set two rocks, one 3. 2 1/2 by 2 inches. Top rock 22.15.8 in. marked X."  
 The stone was found on March 18, 2019 at the south edge of a post which represents the terminus of a standing fence to the north and at the east edge of a post (leaning substantially and loose in the ground) which is in-line with standing fence to the east. As found, the stone was approximately 4 inches below grade. After removal of various brush, dirt and detritus, the stone was left exposed, approximately 2 inches below the surrounding dirt. The stone has a distinct X mark on the top. The top of the stone is approximately 12 inches N-S by 8 inches E-W. The north, east and west sides of the stone appear to be vertical. The south side of the stone slopes to a point approximately 9 inches below the top, below which the south side also appears to be vertical. At 9 inches below the top, the stone measures 15 inches N-S by 8 inches E-W, matching two of the dimensions in the 1862 record. The top 11 inches of the stone were exposed. Probing along the east edge of the stone indicates that it is approximately 22 inches tall. The lower stone was not detected with a probe, as it is substantially smaller than the larger stone.  
 The stone matches the dimensions recited in the 1862 record and was accepted as marking the corner and left in place with the top exposed. No recent BCS tie cards or recorded surveys were found referencing this corner. No rebars or other modern survey monuments were found in the vicinity of the corner.  
 This corner was originally established as a wood post in 1822.



*Kenneth E. Hedge*  
 Kenneth E. Hedge, County Surveyor

*James S. Swift*  
 James S. Swift, IN LS 20200054  
 April 3, 2019



# SECTION CORNER RECORD

NE 700-150

## BOONE COUNTY SURVEYOR'S OFFICE

State Plane grid coordinates NAD83 (2011):

North: 1782642.50 East: 3132261.03 (U.S. survey feet)

Type of monument: 5/8 inch rebar with metal cap stamped 'Boone County Surveyor'

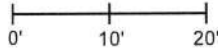
Depth: 14 inches below adjacent tilled field

Indiana tie card references:

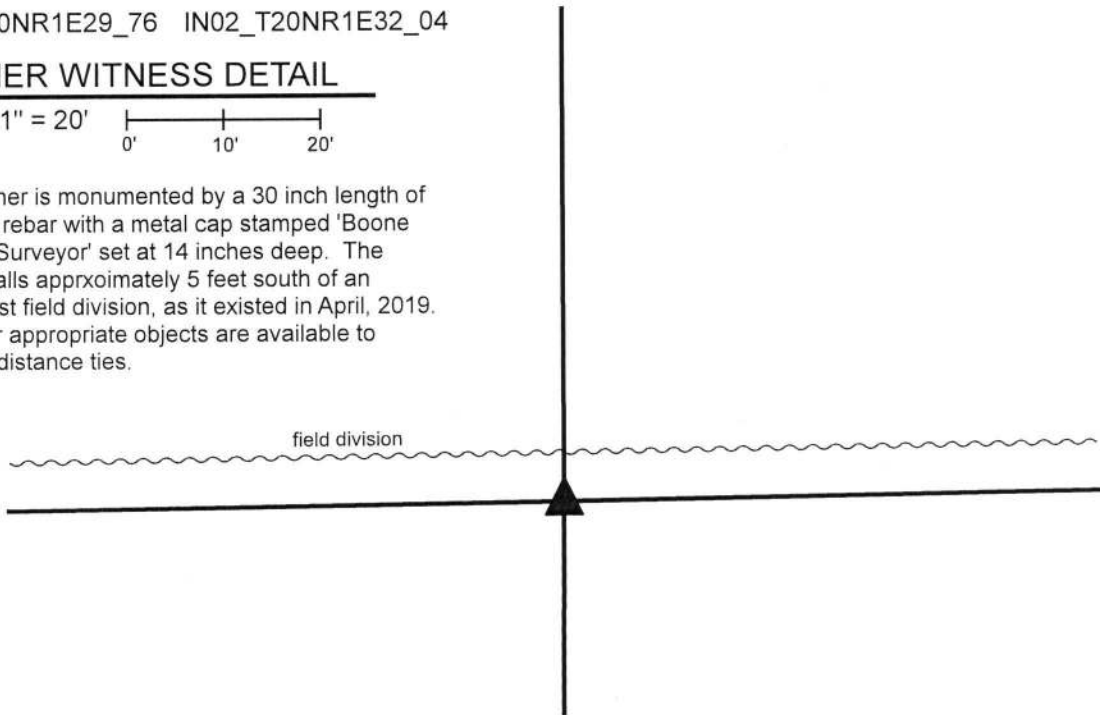
IN02\_T20NR1E29\_76 IN02\_T20NR1E32\_04

### CORNER WITNESS DETAIL

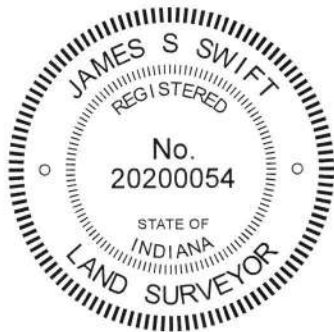
SCALE 1" = 20'



The corner is monumented by a 30 inch length of 5/8 inch rebar with a metal cap stamped 'Boone County Surveyor' set at 14 inches deep. The corner falls approximately 5 feet south of an east-west field division, as it existed in April, 2019. No other appropriate objects are available to provide distance ties.



The rebar was set in the position of a rebar which previously marked the corner and adjacent to the remnants of a wood post. No specific descriptions of this corner were found in the BCS Surveyor's Record beyond the original establishment of the corner as a wood post in 1822. No recent BCS tie cards were found referencing the corner. The corner is shown as being a 5/8 inch rebar with cap (found) a survey by Dewey L. Witte, LS #29800022, dated August 12, 2009 and recorded in Survey Book 11, page 37 in the Office of the Boone County Recorder. This corner was investigated substantially in April, 2019 and excavated on April 25, 2019. It is known that a section of east-west fence previously existed in this vicinity but the physical fence has been removed. Substantial accessory evidence remains in the form of east-west fencing which remains standing beginning at 560 feet east of the corner and continuing east for several hundred feet. Evidence of adjacent quarter-quarter section lines exists in the form of N-S fencing approximately 1/4 mile east of the corner, the physical roadway of Caldwell Road approximately 1/4 mile west of the corner and an old corner post approximately 1/4 mile south of the corner. The position of the rebar shown on the Witte survey was computed with minimal uncertainty with respect to the relative positions of other evidence shown on the survey. The computed position of the rebar fits very well with the relative positions of the aforementioned accessory evidence and with the relative positions of evidence of the northeast corner, northwest corner and center quarter corner of section 32. Excavation in the immediate vicinity of the calculated position of the rebar revealed the remnants of an old wood post found at 14 inches below the surface of the tilled field. Scraps of wire were also found in the ground to the east and west of the calculated position and post remnants. The post is mostly rotten. The computed position fell along the west edge of the remnants of the post. The computed position was held for the corner and a 30 inch length of 5/8 inch diameter rebar was set at this position, partially driven into the remnants of the post. The top of the rebar was set at 14 inches deep to avoid disruption by agricultural equipment. The existing east-west field division, as it existed at the time of excavation, is approximately 5 feet north of the corner.



*Kenneth E. Hedge*  
Kenneth E. Hedge, County Surveyor

*James S. Swift*  
James S. Swift, IN LS 20200054  
May 22, 2019

Clinton Township

Section 29  
T20N, R1E

Section 32  
T20N, R1E

# SECTION CORNER RECORD

## BOONE COUNTY SURVEYOR'S OFFICE

NE 700-200

State Plane grid coordinates NAD83 (CORS96):

North: 1782688.13 East: 3134877.00 (U.S. survey feet)

Type of monument: Harrison, 4" disk 'Section Corner'

Depth: One inch below adjacent road surface

Indiana tie card references:

IN02\_T20NR1E29\_80 IN02\_T20NR1E28\_72

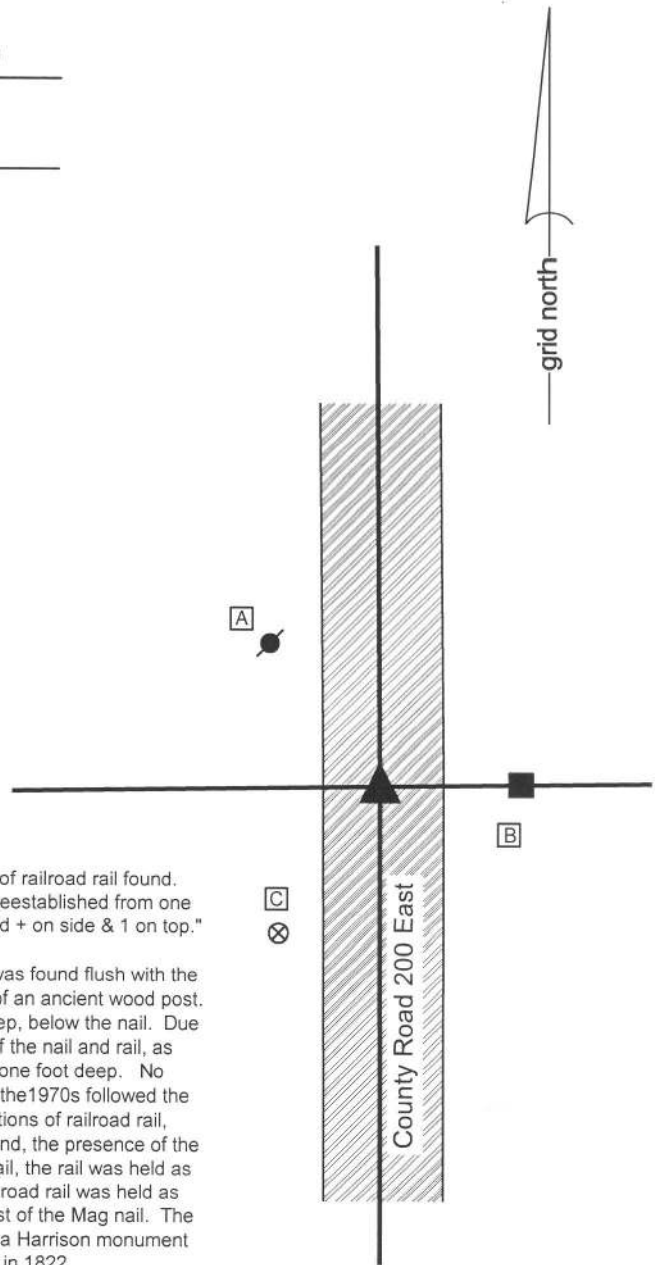
IN02\_T20NR1E32\_08 IN02\_T20NR1E33\_00

### CORNER WITNESS DETAIL

SCALE 1" = 30'

- A - Mag nail set in S.E. side power pole, 2' a.g., 27.1'
- B - Mag nail set in W. side power pole, 1' a.g., 19.7'
- C - Boone County witness mark, flush, 28.0'

Boone County witness mark is a 3/8" diameter x 2' long rebar bearing a metal cap stamped "Boone County Witness Point."



The Harrison monument was set in place of a Mag nail and a vertical section of railroad rail found. A BCS record dated June 22&23, 1866 states, with respect to this corner, "Reestablished from one tree. Set two Rocks. One 8.6.6 in marked +. Top Rock 16.8.8 inches marked + on side & 1 on top." A BCS tie card dated August, 1970 states "Found small stones - set rail." This corner was excavated on June 3, 2014. Prior to excavation a Mag nail was found flush with the surface of the road, in the approximate center of the road, immediately west of an ancient wood post. Excavation revealed a vertical section of railroad rail found at eight inches deep, below the nail. Due to the presence of a 600 pair phone line crossing the road in one foot south of the nail and rail, as marked by IUPPS, only an area being one foot by one foot was excavated to one foot deep. No further evidence of the corner was found. It is known that BCS field crews of the 1970s followed the practice of removing stones, when found and replacing them with vertical sections of railroad rail, unless otherwise noted. Given this known practice, the call for the stones found, the presence of the rail and the lack of any other evidence found in the immediate vicinity of the rail, the rail was held as providing the best available evidence of the corner. The top, center of the railroad rail was held as the position of the corner, being approximately 0.2 foot north and 0.2 foot east of the Mag nail. The railroad rail was left in place, the top of the rail was anchored in concrete and a Harrison monument was set above the rail. This corner was originally established as a wood post in 1822.



*Kenneth E. Hedge*  
 Kenneth E. Hedge, County Surveyor

*James S. Swift*  
 James S. Swift, IN LS 20200054  
 March 27, 2015

Clinton Township

