

SECTION CORNER RECORD

NW 000-1000

BOONE COUNTY SURVEYOR'S OFFICE

State Plane grid coordinates NAD83 (2011):

Corner 1: North: 1745562.22 East: 3071932.64 (U.S. survey feet)

Corner 2: North: 1745562.24 East: 3071959.04 (U.S. survey feet)

Type of monument: Harrison, 4" disk 'Section Corner'

Depth: Six inches below adjacent road surface

Indiana tie card references:

IN02_T19NR2W33_72 IN02_T19NR2W32_80

IN02_T18NR2W05_08 IN02_T18NR2W04_00

CORNER WITNESS DETAIL

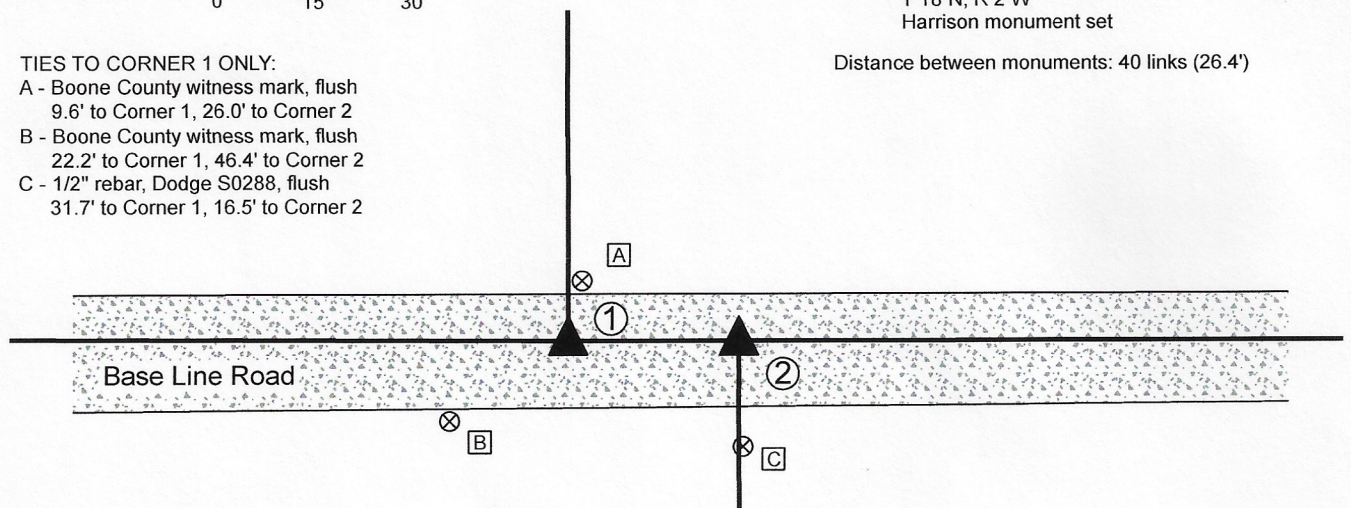
SCALE 1" = 30'

TIES TO CORNER 1 ONLY:

- A - Boone County witness mark, flush
9.6' to Corner 1, 26.0' to Corner 2
- B - Boone County witness mark, flush
22.2' to Corner 1, 46.4' to Corner 2
- C - 1/2" rebar, Dodge S0288, flush
31.7' to Corner 1, 16.5' to Corner 2

- ① S.E. Corner, Section 32
S.W. Corner, Section 33
T 19 N, R 2 W
Harrison monument set
- ② N.E. Corner, Section 5
N.W. Corner, Section 4
T 18 N, R 2 W
Harrison monument set

Distance between monuments: 40 links (26.4')

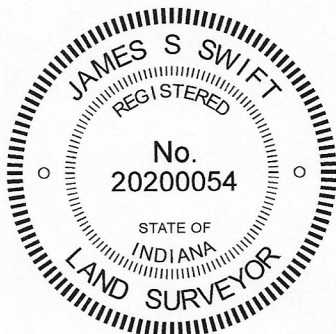


The Harrison monument at Corner 1 was set in place of a stone found. The position of Corner 2 is 26.4 feet (40 links) east of Corner 1. The final position of Corner 2 will be established on the township line after the standard corner to the east (NW 000-950) is determined and monumented.

A BCS record of 1857 shows corner 2 as "set post." No specific descriptions of Corner 1 were found in the BCS Surveyor's Record beyond the original establishment of the corner as a wood post in 1819. Corner 1 is noted as the terminal point for measurements in an entry of 1867, indicating that some monument was likely present from which to measure at that time.

A BCS tie card dated October 16, 1969 states "No stone. RRR set." The tie card is referenced to Corner 2 but it is believed that the railroad rail was set at that time at Corner 1. A BC tie card dated January 18, 1994 shows a railroad spike at Corner 2, 26.4 feet east of Corner 1. The 1994 tie card demonstrates that, at that time, existing north-south fences existing to the north of Corner 1 and to the south of Corner 2.

Both of these corners were excavated on January 3, 2020. Prior to excavation, a section of railroad rail leaning substantially toward the west was found providing evidence of Corner 1 and broken off piece of steel t-post was found providing evidence of Corner 2. The tops of the two monuments were found at 26.9 feet apart. Excavation revealed a stone found at 4 inches deep, slightly north and west of the railroad rail. The stone was 8 inches E-W by 7 inches N-S by 6 inches tall, embedded in the clay layer below the rather thin road bed. No specific etched marks were observed on the stone. Excavation of an area extending 1 foot east, 5 foot north, 1 foot south and 6 feet west of the piece of steel t-post revealed no further evidence of Corner 2. The found stone was held as marking the position of Corner 1. The stone was removed and replaced with a Harrison monument in the position of the top, center of the stone. The top of the railroad rail, removed during excavation, had been 2.0 feet south and 0.9 foot east of the top, center of the stone. Corner 2 was established on the township line at the record federal closing distance of 40 links east of Corner 1. A Harrison monument was set at this position on June 4, 2020. The broken-off piece of steel t-post, removed during excavation, had been 2.0 feet south and 1.4 feet east of this position.



Kenneth E. Hedge
Kenneth E. Hedge, County Surveyor

James S. Swift
James S. Swift, IN LS 20200054
June 17, 2020

Jefferson Township

| | |
|-------------------------|-------------------------|
| Section 32 T19N, R2W | Section 33 T19N, R2W |
| Section 5 T18N, R2W | Section 4 T18N, R2W |

SECTION CORNER RECORD

NW 000-1050

BOONE COUNTY SURVEYOR'S OFFICE

State Plane grid coordinates NAD83 (2011):

Corner: North: 1745572.27 East: 3069288.79 (U.S. survey feet)

Witness: North: 1745572.27 East: 3069288.09 (U.S. survey feet)

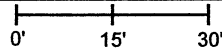
Type of monument: Wood corner post, witnessed by a 5/8" diameter rebar, 30" long, with aluminum cap stamped 'Boone County Surveyor' three inches above grade.

Indiana tie card references:

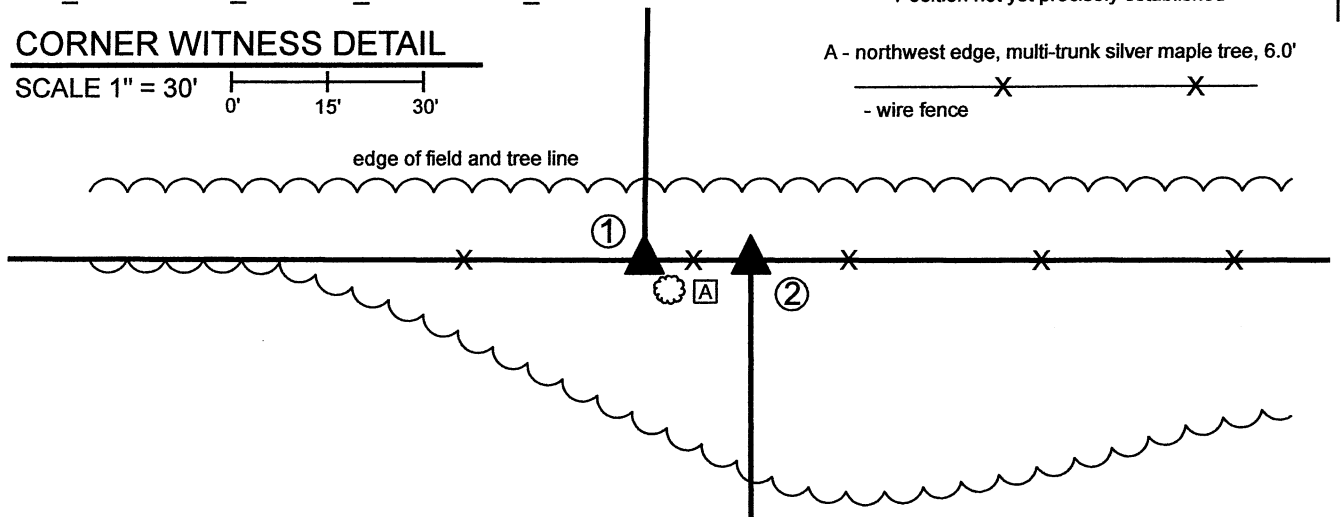
IN02_T19NR2W32_76 IN02_T18NR2W05_04

CORNER WITNESS DETAIL

SCALE 1" = 30'



- ① South quarter corner Section 32, T 19 N, R 2 W Wood corner post witnessed by 5/8 inch rebar with metal cap
- ② North Quarter Corner Section 5, T 18 N, R 2 W Position not yet precisely established

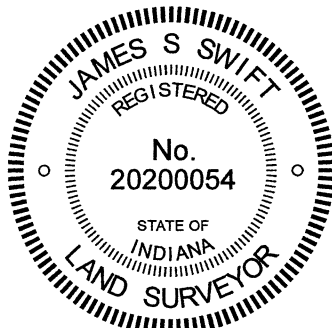


The wood corner post marking Corner 1 was found in place. The rebar with metal cap set adjacent to the post is intended to act as a witness to the post, which is held as marking the corner. The position of Corner 2 has not yet been fully established.

A BCS Record of March 24, 1857 for section 32 states, with respect to Corner 1, "Reestablished quarter sect. cor. Set post." Another entry for section 5, recorded on the same date plus the next day (March 25) states, with respect to Corner 2, "Reest. Set post." The two entries, though recorded on the same and successive days, do not cross reference to the other corner and no information is stated about the distance between the two posts. The entry for section 5 also shows reference distances which demonstrate that Corner 2 was set at the midpoint of the northeast and northwest corners of Section 5. A survey by Jerry L. Carter, LS S03250, dated December 6, 2002 and recorded a Instrument 0305089 in the Office of the Boone County Recorder, shows Corner 2 as being a headpost. It is noted that the average of the original federal closing distances reported for the northeast and northwest corners of section 5 is 16.5 feet or 25 links.

These corners were investigated several times from 2017 through 2020. An ancient wood corner post with fencing to the east and west and cut-off toward the north was found providing the best available evidence of Corner 1. Several large rocks were found in the vicinity, none of which appeared to represent corner stone monuments. A 1/2-inch diameter rebar with yellow plastic cap (markings illegible) was found 14.2 feet east of and slightly south of the wood corner post. The origin of this rebar is not known. The position of the post is 2.4 feet east of a position equidistant from the southeast and southwest corners of section 32. The found 1/2-inch rebar is within 0.5 foot of a position equidistant from the northeast and northwest corner of section 5 but is 2.1 feet closer to the post than may be expected with respect to the original federal closing distances. The corner post, being the most reliable evidence found for the corners, was accepted as the best available evidence of Corner 1. The post is held as the corner and the rebar set adjacent to the corner is intended to witness the post. It is noted that the aforementioned Carter survey appears to hold this post as the position of Corner 2, but this conclusion is not supported by evidence. The Carter survey specifically shows the center of County Road 1050 West to diverge from the west line of the northeast quarter of section 2. Had Mr. Carter treated the post as marking Corner 1 and held either the 1/2-inch rebar or the average closing distance of 16.5 feet to establish Corner 2, he would have observed the road generally aligning with said west line. The precise position of Corner 2 remains uncertain, pending further investigations into the origin of the 1/2-inch rebar and evidence of quarter-quarter corners to the east and west.

Corner 1 was established as a wood post in 1819. Corner 2 is not an original federal corner.



Kenneth E. Hedge

 Kenneth E. Hedge, County Surveyor

James S. Swift

 James S. Swift, IN LS 20200054 January 12, 2021

Jefferson Township

Section 32
T19N, R2W

Section 5
T18N, R2W

SECTION CORNER RECORD

NW 000-1100

BOONE COUNTY SURVEYOR'S OFFICE

State Plane grid coordinates NAD83 (2011):

Corner 1: North: 1745581.50 East: 3066640.19 (U.S. survey feet)

Corner 2: North: 1745581.47 East: 3066646.79 (U.S. survey feet)

Monument: Harrison monument, 4" disk 'Section Corner'

Depth: Six inches below adjacent road surface

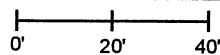
Indiana tie card references:

IN02_T19NR2W32_72 IN02_T19NR2W31_80

IN02_T18NR2W06_08 IN02_T18NR2W05_00

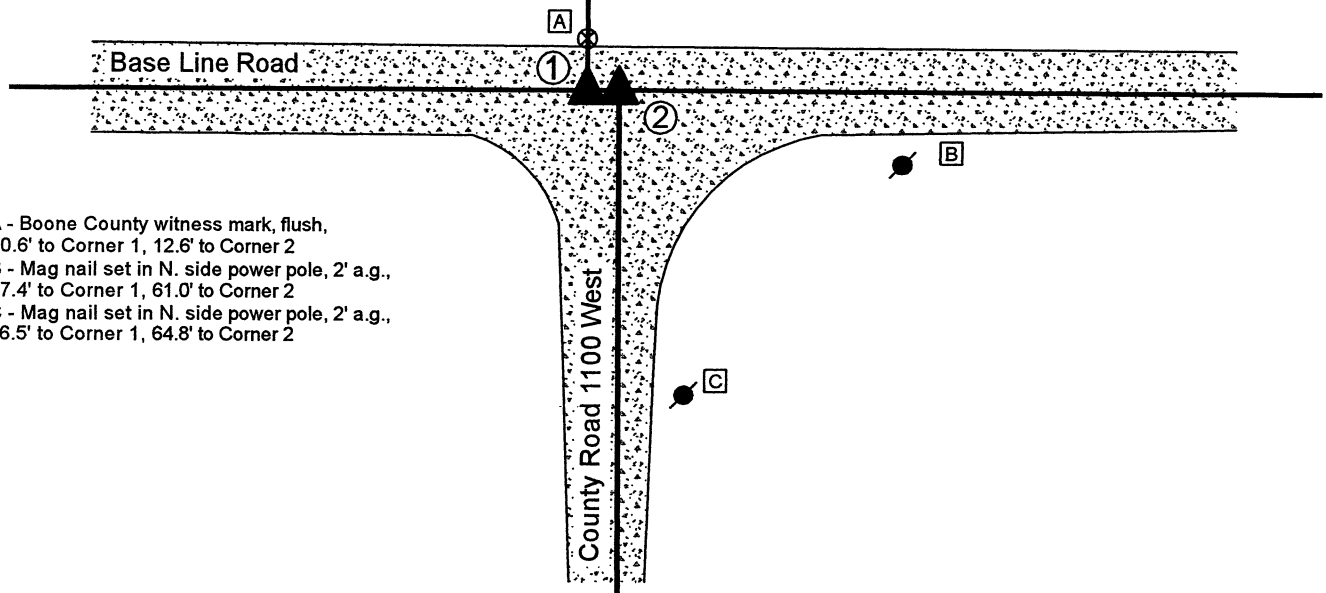
CORNER WITNESS DETAIL

SCALE 1" = 40'



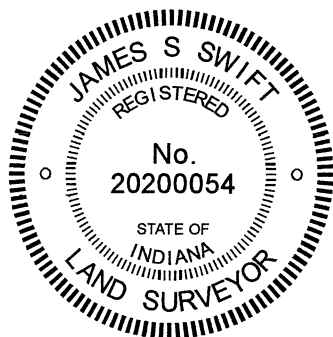
- ① S.E. Corner, Section 31
S.W. Corner, Section 32
T 19 N, R 2 W
Harrison monument set
- ② N.E. Corner, Section 6
N.W. Corner, Section 5
T 18 N, R 2 W
Harrison monument set

Distance between corners: 10 links = 6.6'



- A - Boone County witness mark, flush, 10.6' to Corner 1, 12.6' to Corner 2
- B - Mag nail set in N. side power pole, 2' a.g., 67.4' to Corner 1, 61.0' to Corner 2
- C - Mag nail set in N. side power pole, 2' a.g., 66.5' to Corner 1, 64.8' to Corner 2

The Harrison monument at Corner 2 was set over a stone found. Corner 1 was established on the township line, 6.6 feet west of Corner 2. A BCS tie card dated September 20, 1912 states, with respect to Corner 2, "Located by measurement from rock at quarter section corner in section 6 and by line from quarter section corner on section line between 5 and 6. Set stone 10x10x14 flat, sandy rock, 10x12x6 under." No specific descriptions of Corner 1 were found in the BCS Surveyor's Record beyond the original establishment of the corner as a wood post in 1819. It is noted that the federal closing distance at this corner is 10 links (6.6 feet) east. A BCS tie card dated October, 1971 states, with respect to Corner 2, "Stone located. RRR 6" from stone, S. side." These corners were both excavated on December 27, 2019. Prior to excavation, a vertical section of railroad rail was found at the intersection of Base Line Road and County Road 1100 West, per the 1971 tie card. Excavation at Corner 2 revealed the lower stone described in the 1912 record at 27 inches deep. The stone measured 12 inches N-S by 10 inches E-W on the top and was buried 10 inches into the clay layer below the road bed. The top, center of the stone was 6 inches north of the position of the railroad rail, removed during excavation. No specific marks were observed etched on the stone. The stone was accepted as being the lower monument called in the 1912 record. Excavation of an area 3 feet east-west by 4 feet north-south, centered on a position 6.6 feet west of the found stone revealed no evidence of Corner 1. The stone found at Corner 2 was left in place and a Harrison monument was set over the top, center of the stone, 6 inches south of the position of the rail, in agreement with the 1971 tie card, on December 27, 2019. Corner 1 was established on the westerly prolongation of the township line as defined by Corner 2 and the south quarter corner of Section 32, T19N, R2W, (see BCS Corner NW 000-1050). A Harrison monument was set at this position on December 4, 2020.



Kenneth E. Hedge
Kenneth E. Hedge, County Surveyor

James S. Swift
James S. Swift, IN LS 20200054
December 15, 2020

Jefferson Township

| | |
|-------------------------|-------------------------|
| Section 31 T19N, R2W | Section 32 T19N, R2W |
| Section 6 T18N, R2W | Section 5 T18N, R2W |

SECTION CORNER RECORD

NW 050-1000

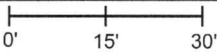
BOONE COUNTY SURVEYOR'S OFFICE

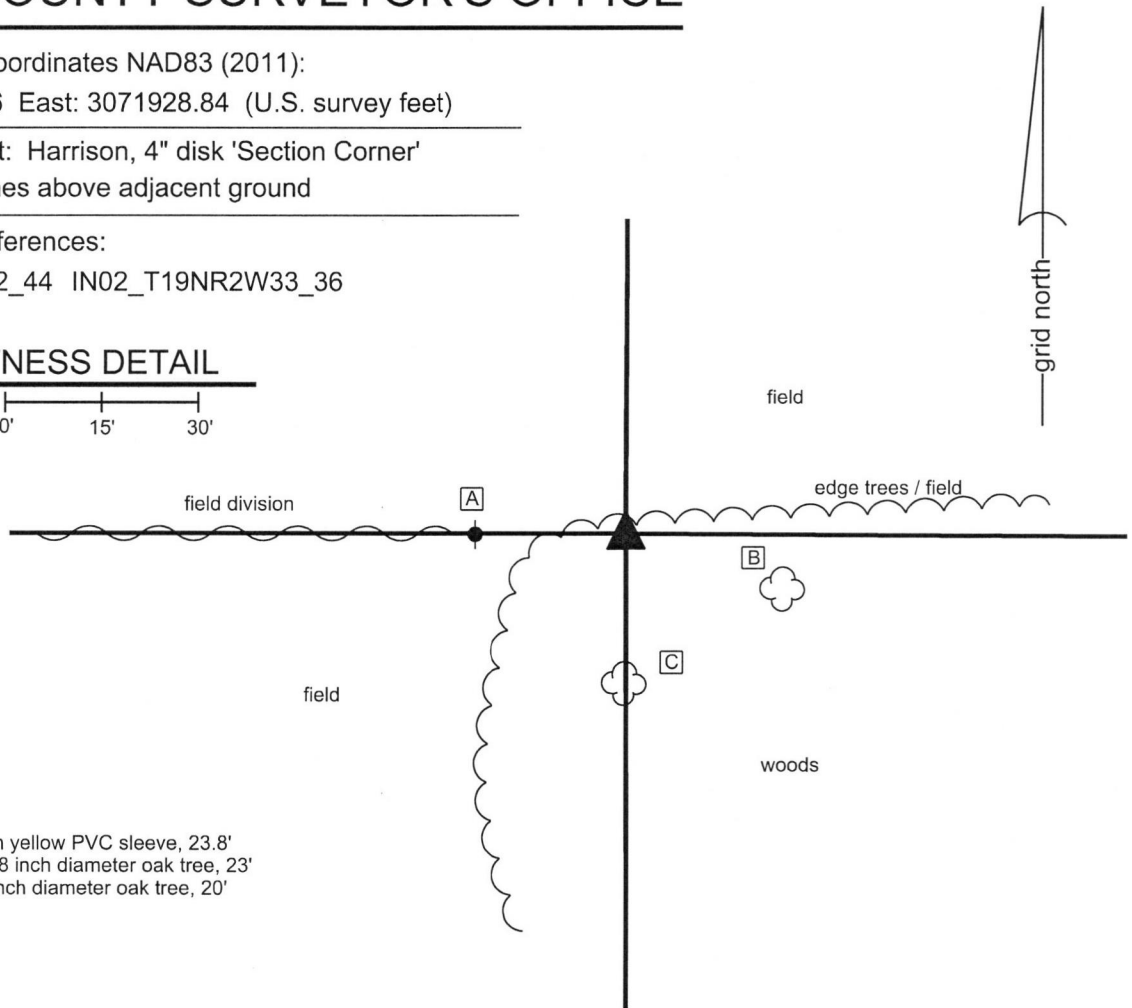
State Plane grid coordinates NAD83 (2011):
North: 1748210.76 East: 3071928.84 (U.S. survey feet)

Type of monument: Harrison, 4" disk 'Section Corner'
Depth: Three inches above adjacent ground

Indiana tie card references:
IN02_T19NR2W32_44 IN02_T19NR2W33_36

CORNER WITNESS DETAIL

SCALE 1" = 30' 




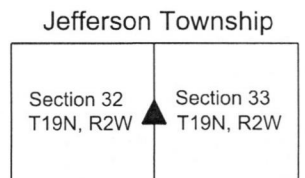
- A - Steel t-post in yellow PVC sleeve, 23.8'
- B - N.W. edge, 48 inch diameter oak tree, 23'
- C - N. edge, 13 inch diameter oak tree, 20'

The Harrison Monument was set in place of a rebar which was set in place of a stone found. No specific descriptions of this corner were found in the BCS Surveyor's Record beyond the original establishment of the corner as a wood post in 1822. No recent BCS tie cards were found referencing the corner. In October, 2013, James Reese Harpel, LS20000203, found a stone which he believed to be marking the corner. He contacted the Boone County Surveyor's Office and I, James Swift, met him at the corner and confirmed that the stone appeared to represent the best evidence of the original position of the corner. The associated survey by Harpel dated October 7, 2013 holds the position of the stone as the corner. On October 16, 2018 the corner was revisited. On this visit, it was apparent that significant disruption has occurred at the corner, as fences have been removed. A rebar bearing the cap of Deckard Engineering (Harpel's company) was found at the corner in the same position as the stone as found in October, 2013. The position of the rebar (formerly stone) fits well with local evidence of the corner in the form of fragments of fence to the south and a field division to the west and fits well with the relative positions of proximate corners. The rebar was held as marking the corner and was replaced with a Harrison monument in the same position on October 16, 2018.




Kenneth E. Hedge, County Surveyor


James S. Swift, IN LS 20200054
November 14, 2018



SECTION CORNER RECORD

NW 050-1100

BOONE COUNTY SURVEYOR'S OFFICE

State Plane grid coordinates NAD83 (2011):

Corner: North: 1748226.53 East: 3066641.25 (U.S. survey feet)

Witness: North: 1748226.53 East: 3066641.83 (U.S. survey feet)

Corner monument: Wood corner post

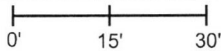
Witness monument: 5/8 inch rebar with metal cap stamped 'Boone County Surveyor' 3 inches a.g.

Indiana tie card references:

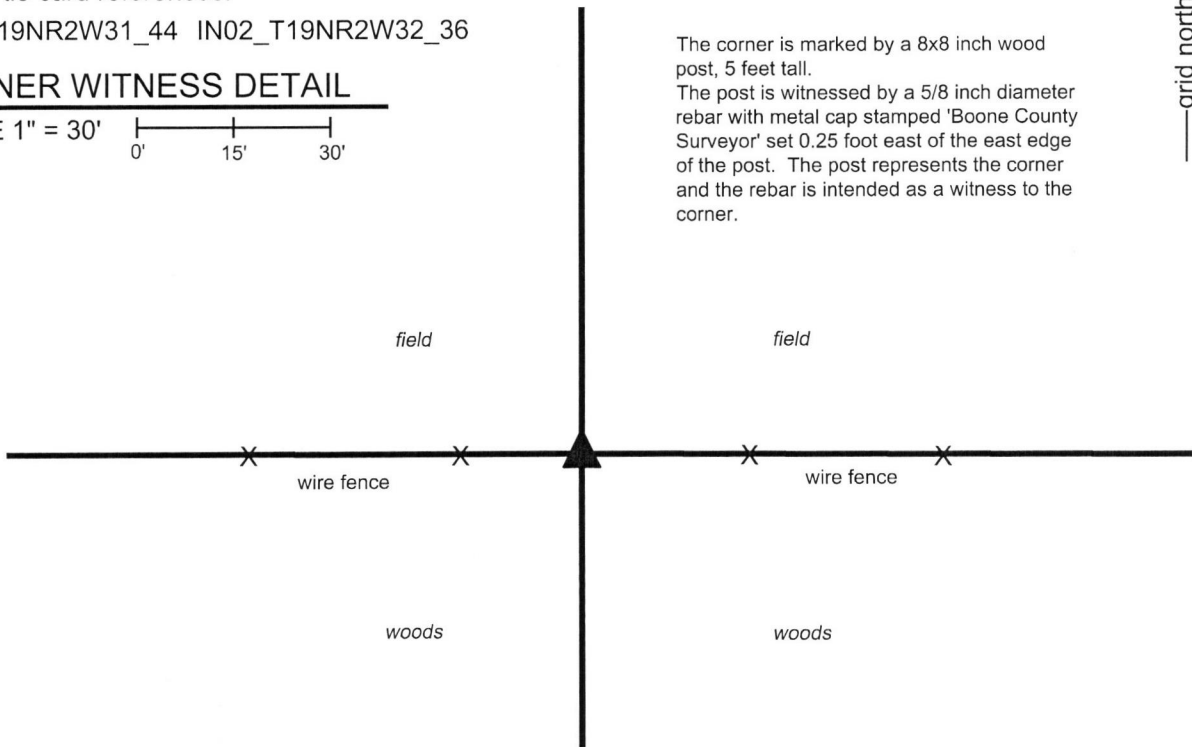
IN02_T19NR2W31_44 IN02_T19NR2W32_36

CORNER WITNESS DETAIL

SCALE 1" = 30'



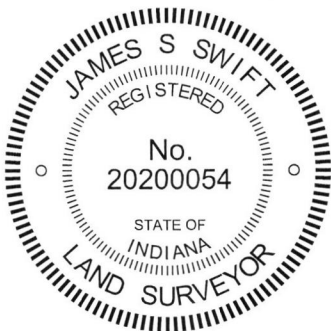
The corner is marked by a 8x8 inch wood post, 5 feet tall.
The post is witnessed by a 5/8 inch diameter rebar with metal cap stamped 'Boone County Surveyor' set 0.25 foot east of the east edge of the post. The post represents the corner and the rebar is intended as a witness to the corner.



The wood corner post was found in place.

No specific descriptions of this corner were found in the BCS Surveyor's Record beyond the original establishment of the corner as a wood post in 1822. Neither recent BCS tie cards nor surveys recorded in the Boone County Recorder's Office were found referencing the corner. The corner is referenced in a metes and bounds description found in Instrument 0312629 in said Recorder's Office, which calls for a distance of 1323.96 feet between this corner and the northeast corner of the west half of the southwest quarter of section 32.

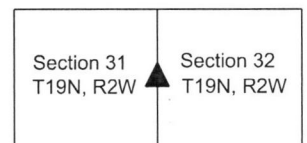
This corner was excavated on May 17, 2019. Prior to excavation, a wood corner post was found with standing fencing to the east and west and with fencing cut-off toward the north. The post is 8 inches square with a wood brace toward the west and the notch for a former brace toward the north. No stones were found around the post. Numerous stones were found in loose pile centered approximately 10 feet east of the post. None of these stones appeared to represent monuments purposely set to mark the corner. The distance between the post and a railroad spike found in the center of County Road 1075 West is approximately 2 feet less than the distance called in the aforementioned Instrument 0312629 for the line between the subject corner and the northeast corner of the west half of the southwest quarter. No rebars or other artificial survey monuments were found in the vicinity of the post. The post is clearly ancient and fits well with the relative positions of proximate corners. The post was accepted as the best available evidence of the corner. The post was left in place and is witnessed by a 30 inch length of 5/8 inch rebar with metal cap stamped 'Boone County Surveyor' set 0.25 feet east of the east edge of the post.



Kenneth E. Hedge, County Surveyor

James S. Swift, IN LS 20200054
June 12, 2019

Jefferson Township



SECTION CORNER RECORD

BOONE COUNTY SURVEYOR'S OFFICE

NW 100-1000

State Plane grid coordinates NAD83 (2011):
 North: 1750865.98 East: 3071941.75 (U.S. survey feet)

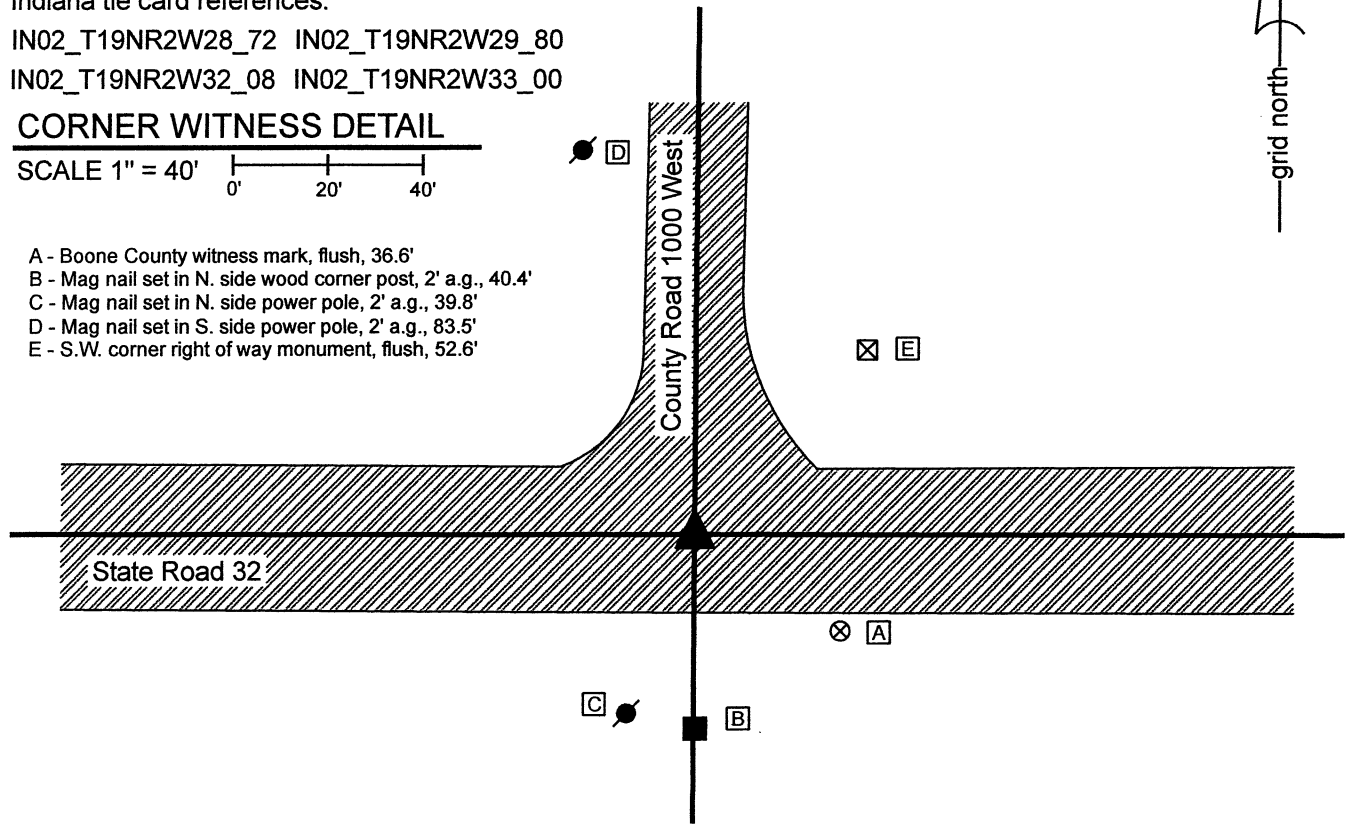
Type of monument: plug in monument box, INDOT Type B
 Depth: Flush with adjacent road surface

Indiana tie card references:
 IN02_T19NR2W28_72 IN02_T19NR2W29_80
 IN02_T19NR2W32_08 IN02_T19NR2W33_00

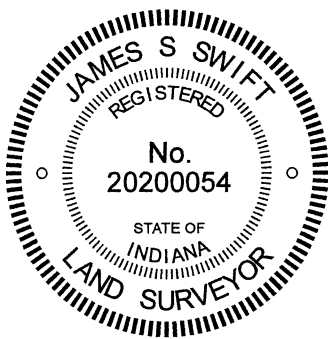
CORNER WITNESS DETAIL

SCALE 1" = 40'

- A - Boone County witness mark, flush, 36.6'
- B - Mag nail set in N. side wood corner post, 2' a.g., 40.4'
- C - Mag nail set in N. side power pole, 2' a.g., 39.8'
- D - Mag nail set in S. side power pole, 2' a.g., 83.5'
- E - S.W. corner right of way monument, flush, 52.6'



The INDOT Type B Monument was found in place and held as marking the corner.
 No specific references to this corner were found in the BCS Surveyor's Record beyond the original establishment of the corner as a wood post in 1822. No recent BCS tie cards were found referencing this corner.
 A Survey Monument Replacement Surveyor's Report recorded as Instrument 200700005107 in the Office of the Boone County Recorder indicates that between May 2006 and May 2007 an existing monument, not identified, was replaced with a Type B monument. The report notes that the new monument was set 0.04 foot SE of the previous monument.
 No excavation was performed at this corner, as it falls in State Road 32. The Type B monument is located at the approximate intersection the centers of the east-west state road and County Road 1000 West. The monument was accepted as the best available evidence of the corner.



Kenneth E. Hedge
 Kenneth E. Hedge, County Surveyor

James S. Swift
 James S. Swift, IN LS 20200054
 June 16, 2021

Jefferson Township

| | |
|-------------------------|-------------------------|
| Section 29 T19N, R2W | Section 28 T19N, R2W |
| Section 32 T19N, R2W | Section 33 T19N, R2W |

SECTION CORNER RECORD

BOONE COUNTY SURVEYOR'S OFFICE

NW 100-1050

State Plane grid coordinates NAD83 (2011):

North: 1750870.12 East: 3069288.64 (U.S. survey feet)

Type of monument: plug in monument box, INDOT Type B

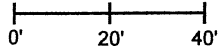
Depth: Flush with adjacent road surface

Indiana tie card references:

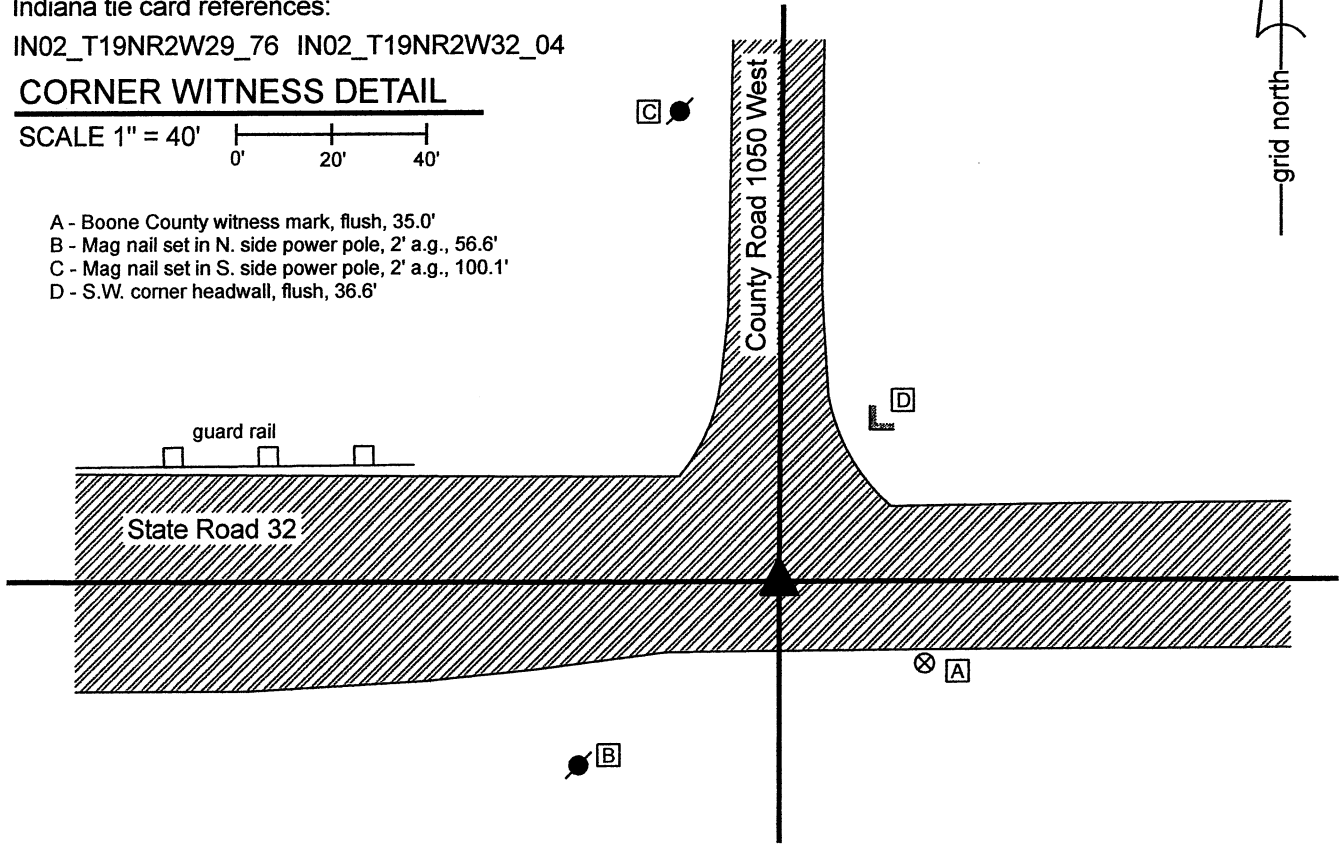
IN02_T19NR2W29_76 IN02_T19NR2W32_04

CORNER WITNESS DETAIL

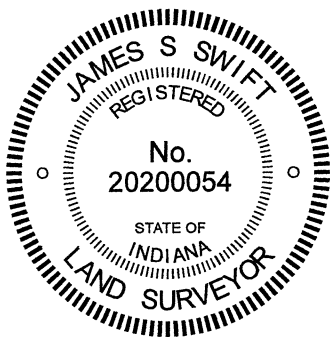
SCALE 1" = 40'



- A - Boone County witness mark, flush, 35.0'
- B - Mag nail set in N. side power pole, 2' a.g., 56.6'
- C - Mag nail set in S. side power pole, 2' a.g., 100.1'
- D - S.W. corner headwall, flush, 36.6'



The INDOT Type B Monument was found in place and held as marking the corner.
 No specific references to this corner were found in the BCS Surveyor's Record beyond the original establishment of the corner as a wood post in 1822.
 No recent BCS tie cards were found referencing this corner.
 A Survey Monument Replacement Surveyor's Report recorded as Instrument 200700005107 in the Office of the Boone County Recorder indicates that between May 2006 and May 2007 an existing monument, not identified, was replaced with a Type B monument. The report notes that the new monument was set 0.05 foot SW of the previous monument.
 No excavation was performed at this corner, as it falls in State Road 32. The Type B monument is located at the approximate intersection the centers of the east-west state road and County Road 1050 West. The monument was accepted as the best available evidence of the corner.



Kenneth E. Hedge
 Kenneth E. Hedge, County Surveyor

James S. Swift
 James S. Swift, IN LS 20200054
 June 16, 2021

Jefferson Township

Section 29
 T19N, R2W

Section 32
 T19N, R2W