

SECTION CORNER RECORD

NW 000-400

BOONE COUNTY SURVEYOR'S OFFICE

State Plane grid coordinates NAD83 (2011):

Corner 1: North: 1745529.48 East: 3103656.14 (U.S. survey feet)

Corner 2: North: 1745529.62 East: 3103594.31 (U.S. survey feet)

Type of monument: Harrison, 4" disk 'Section Corner'

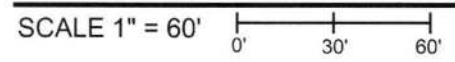
Depth: Flush with adjoining ground (both corners)

Indiana tie card references:

IN02_T19NR1W32_80 IN02_T19NR1W33_72

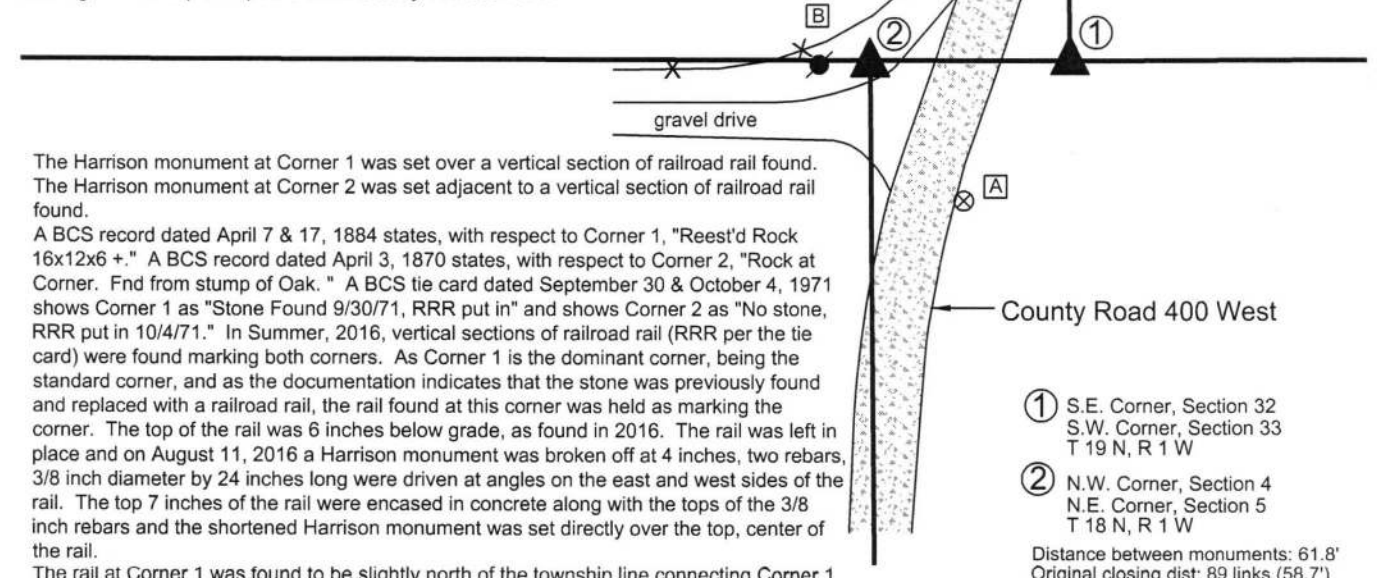
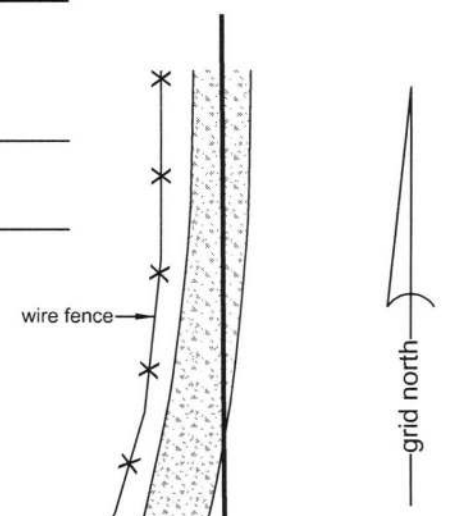
IN02_T18NR1W05_08 IN02_T18NR1W04_00

CORNER WITNESS DETAIL



- A - Boone County witness mark, flush, 54.5' to Corner 1, 52.5' to Corner 2
- B - Mag nail set in W. side power pole, 2' a.g., 78.1' to Corner 1, 16.3' to Corner 2
- C - Mag nail set in E. side wood post, 1' a.g., 57.4' to Corner 1, 45.3' to Corner 2

Boone County witness mark is a 3/8" diameter x 2' long rebar bearing a metal cap stamped "Boone County Witness Point."



The Harrison monument at Corner 1 was set over a vertical section of railroad rail found. The Harrison monument at Corner 2 was set adjacent to a vertical section of railroad rail found.

A BCS record dated April 7 & 17, 1884 states, with respect to Corner 1, "Reest'd Rock 16x12x6 +." A BCS record dated April 3, 1870 states, with respect to Corner 2, "Rock at Corner. Fnd from stump of Oak." A BCS tie card dated September 30 & October 4, 1971 shows Corner 1 as "Stone Found 9/30/71, RRR put in" and shows Corner 2 as "No stone, RRR put in 10/4/71." In Summer, 2016, vertical sections of railroad rail (RRR per the tie card) were found marking both corners. As Corner 1 is the dominant corner, being the standard corner, and as the documentation indicates that the stone was previously found and replaced with a railroad rail, the rail found at this corner was held as marking the corner. The top of the rail was 6 inches below grade, as found in 2016. The rail was left in place and on August 11, 2016 a Harrison monument was broken off at 4 inches, two rebars, 3/8 inch diameter by 24 inches long were driven at angles on the east and west sides of the rail. The top 7 inches of the rail were encased in concrete along with the tops of the 3/8 inch rebars and the shortened Harrison monument was set directly over the top, center of the rail.

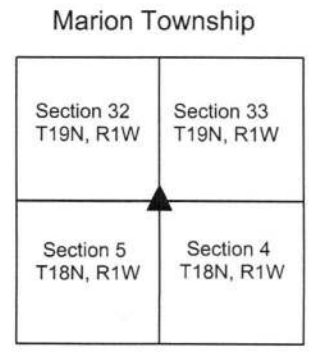
The rail at Corner 1 was found to be slightly north of the township line connecting Corner 1 with the standard corner approximately one-half mile to the west (see corner NW 000-450). The rail was also approximately 3 feet further from Corner 1 than the original closing distance specified in the federal survey notes. Extensive probing performed in the immediate vicinity of the corner yielded no further evidence of the corner. The position of the rail was held in the east-west dimension. The corner was established on the township line and on October 21, 2016 a Harrison monument was set at this position, 0.8 foot south of the rail, which was left in place and partially encased in concrete.

Corner 1 was originally established as a wood post in 1819. Corner 2 was originally established as a wood post in 1820.



Kenneth E. Hedge
Kenneth E. Hedge, County Surveyor

James S. Swift
James S. Swift, IN LS 20200054
March 23, 2017



SECTION CORNER RECORD

NW 000-450

BOONE COUNTY SURVEYOR'S OFFICE

Data for Corner 1 only:

State Plane grid coordinates NAD83 (2011):

North: 1745535.44 East: 3101006.77 (U.S. survey feet)

Type of monument: 5/8 inch rebar with metal cap

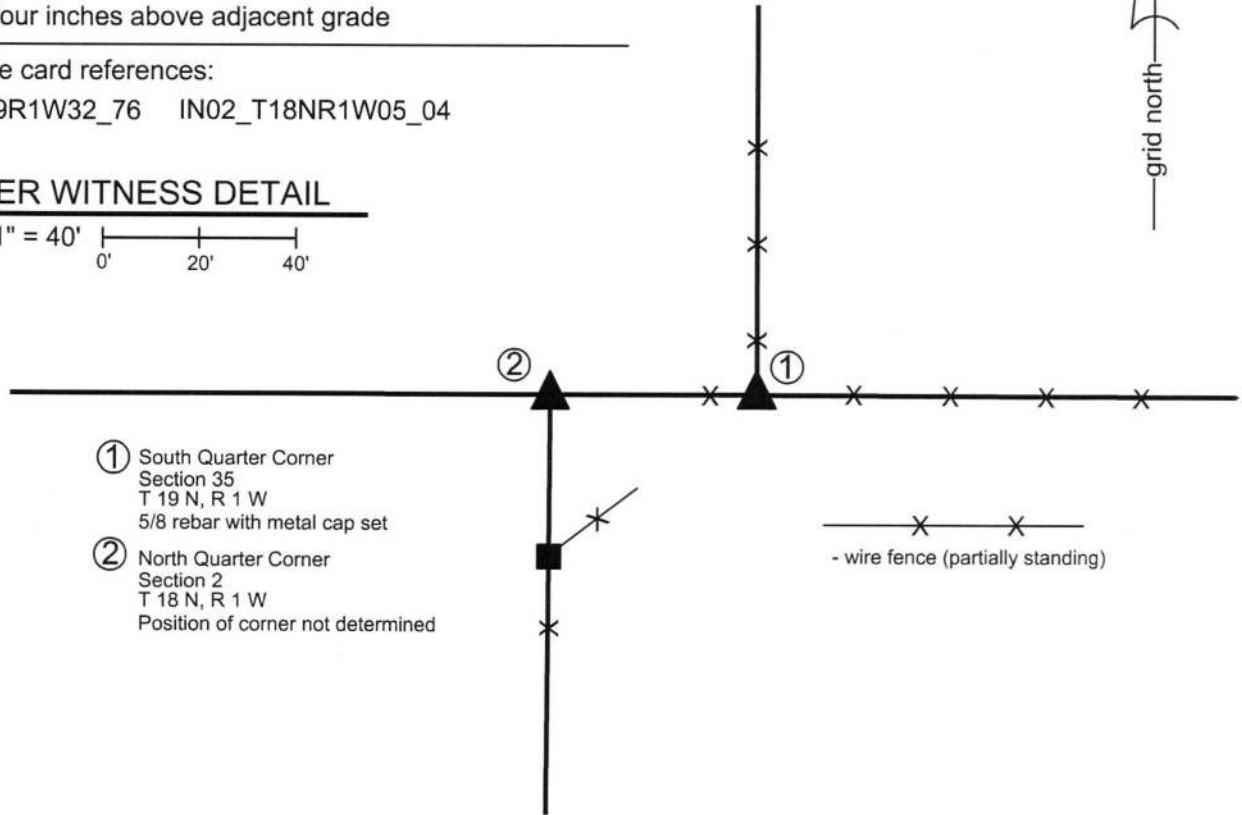
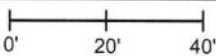
Depth: Four inches above adjacent grade

Indiana tie card references:

IN02_T19R1W32_76 IN02_T18NR1W05_04

CORNER WITNESS DETAIL

SCALE 1" = 40'



- ① South Quarter Corner
Section 35
T 19 N, R 1 W
5/8 rebar with metal cap set
- ② North Quarter Corner
Section 2
T 18 N, R 1 W
Position of corner not determined

- wire fence (partially standing)

The rebar at Corner 1 was driven into the base of a rotten corner post.

A BCS record of March 3, 1858 states, with respect to Corner 1, "Reestablished from old Wit trees. Set Rock 17, 17." A BCS record of March 2, 1858 states, with respect to Corner 2, "Established. Rock 11,13." No recent BCS tie cards were found referencing this corner.


This set of corners was investigated in September, 2016. Substantial evidence of Corner 1 was found in the form of an ancient wood corner post with fencing to the north, east and west. The evidence of Corner 2 was less reliable, as the east-west fencing peters out west of the aforementioned corner post. Fences to the south provide conflicting evidence of the line through the center of the section. None of this fencing reaches as far north as the township line, presumably due to the presence of an ancient railway bed which exists south of and adjacent to the township line. Extensive probing around the corner post yielded no further evidence of the corner. The stone described in the 1858 record was not found nor were any other stones which appeared to be purposeful corner monuments. The ancient post was held as marking the corner. At the time of these investigations, the top of the post had already rotted away from the base, held only by the standing fencing. On September 22, 2016, the fencing was cut away from the post and the top of the post removed. A 36 inch length of 5/8 inch diameter rebar was driven into the rotten base of the post and capped with a metal cap stamped "Boone County Surveyor."

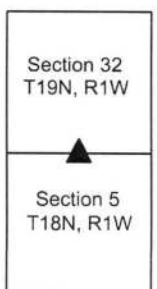
Descriptions for the adjacent properties to the northeast and northwest appear to hold a calculated position for Corner 1. This position is estimated to be approximately 3 feet west and 2 feet south of the corner post. It is not clear why the physical evidence of the corner was disregarded in the preparation of these descriptions.

Corner 1 was originally established as a wood post in 1819. Corner 2 is not an original federal corner.




Kenneth E. Hedge, County Surveyor


James S. Swift, IN LS 20200054
March 23, 2017



SECTION CORNER RECORD

NW 000-500

BOONE COUNTY SURVEYOR'S OFFICE

State Plane grid coordinates NAD83 (2011):

Corner 1: North: 1745537.70 East: 3098351.72 (U.S. survey feet)

Corner 2: North: 1745537.76 East: 3098321.60 (U.S. survey feet)

Corner 1 only:

Type of monument: Harrison, 4" disk 'Section Corner'

Depth: flush with shoulder of road

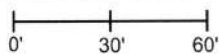
Indiana tie card references:

IN02_T19NR1W31_80 IN02_T19NR1W32_72

IN02_T18NR1W06_08 IN02_T18NR1W05_00

CORNER WITNESS DETAIL

SCALE 1" = 60'



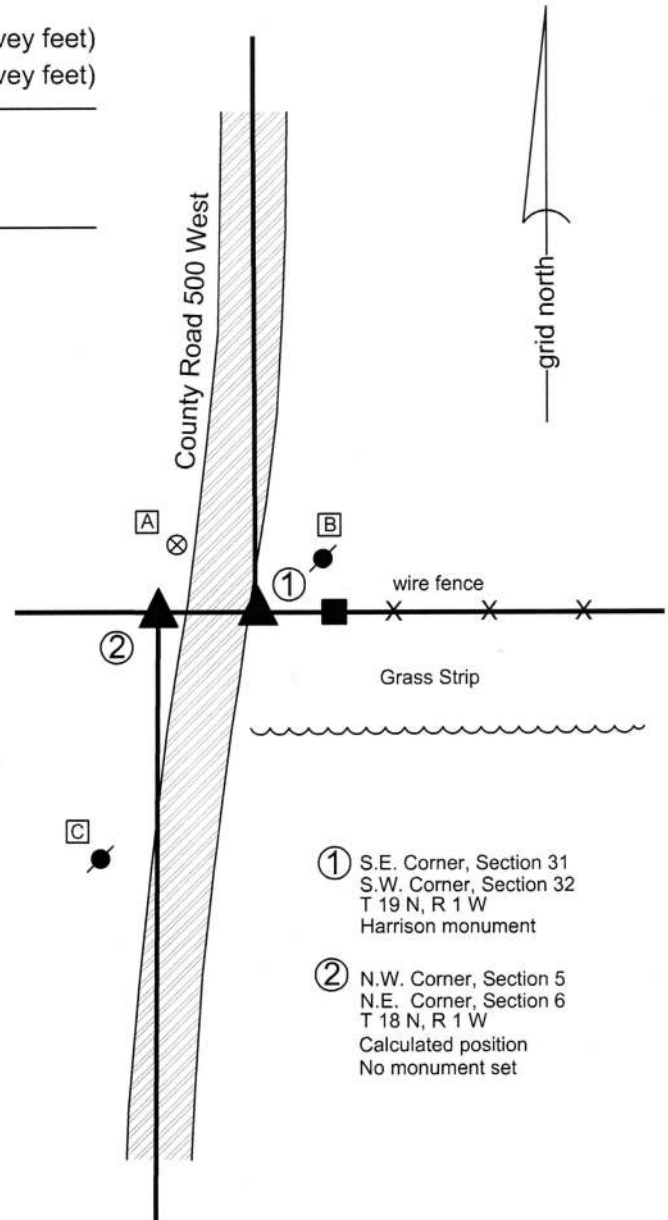
The Harrison monument at Corner 1 was set at a calculated position. No monument was set at Corner 2, as this position falls on an exposed section of metal culvert. The position of Corner 2 is shown as calculated.

No excavation was performed at these corners as the presence of twin culverts indicates that any ancient evidence which may have existed at these corners is no longer present. The position of Corner 2 was established by this office in 1968. A tie card dated September 9, 1968 states "no stone." While the type of monument established that day is not specifically stated, it is known to have been a common practice for BCS field crews to set vertical sections of railroad rails at corners, particularly when the reference remarks are "no stone." The position of Corner 2 was established with respect to deed calls to the corner in both sections 5 and 6. The specific position of the corner was established at the prolongation of a line connecting a railroad rail previously accepted as marking the quarter corner to the south (see Corner SW-050-700 and note that the position held for establishing the corner which is the subject of the current record is that of the railroad rail found during excavation in 2016 but not held as the corner) through a railroad spike found marking the west line of the northwest quarter of section 5 at a point 735 feet south of the subject corner, per calls in Instrument 201300009089 in the Boone County Recorder's Office.

The position of Corner 1 was established in the north-south dimension with respect to the position of Corner 2 and the quarter corner to the east (see Corner NW-000-450). The position of Corner 1 was established in the east-west dimension with respect to the position of the quarter corner to the north (see Corner NW-050-500) and a railroad spike found 448.6 feet north of the corner (deed call of 449.51'), per Document 9601416 in said Recorder's Office. A Harrison monument was set at Corner 1 on September 23, 2016. This monument is directly above a section of metal culvert pipe, but is in sufficient fill to be firmly attached to the ground.

Uncertainties in the north-south dimension of up 1 foot exist with respect to the position of Corner 1 and the previously held position of the corner, per the calls in Document 9601416. Uncertainties of up to 3 feet east-west exist with respect to the relative positions of the two corners, as the original closing distance was 50 links, but the corners, as established herein, are separated by approximately 3 feet less than the original closing distance.

Corner 1 was originally established as a wood post in 1819. Corner 2 was originally established as a wood post in 1820.



① S.E. Corner, Section 31
S.W. Corner, Section 32
T 19 N, R 1 W
Harrison monument

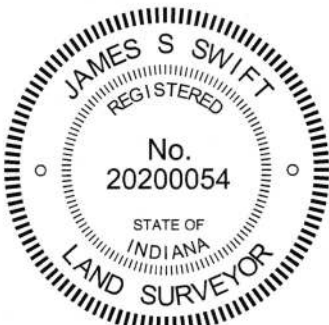
② N.W. Corner, Section 5
N.E. Corner, Section 6
T 18 N, R 1 W
Calculated position
No monument set

A - Boone County witness mark, flush, 32.2'

B - Mag nail set in S.W. side power pole, 2' a.g., 24.1'

C - Mag nail set in E. side power pole, 2' a.g., 89.3'

Note: ties are to Corner 1 only, which is a Harrison monument set on the east shoulder of C.R. 500 West, adjacent to the roadway. Corner 2 falls on an area of exposed culvert. No monument was set at this position.



Kenneth E. Hedge
Kenneth E. Hedge, County Surveyor

James S. Swift
James S. Swift, IN LS 20200054

April 27, 2017

Jefferson Township

Section 31 T19N, R1W	Section 32 T19N, R1W
Section 6 T18N, R1W	Section 5 T18N, R1W

SECTION CORNER RECORD

BOONE COUNTY SURVEYOR'S OFFICE

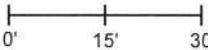
NW 050-400

State Plane grid coordinates NAD83 (2011):
 North: 1748173.16 East: 3103639.84 (U.S. survey feet)

Type of monument: Harrison, 4" disk 'Section Corner'
 Depth: Six inches below adjacent gravel road surface

Indiana tie card references:
 IN02_T19NR1W32_44 IN02_T19NR1W33_36

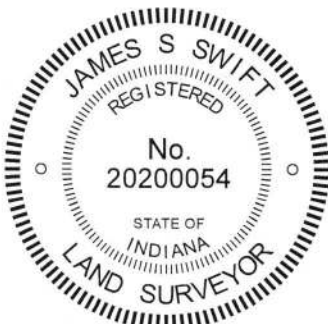
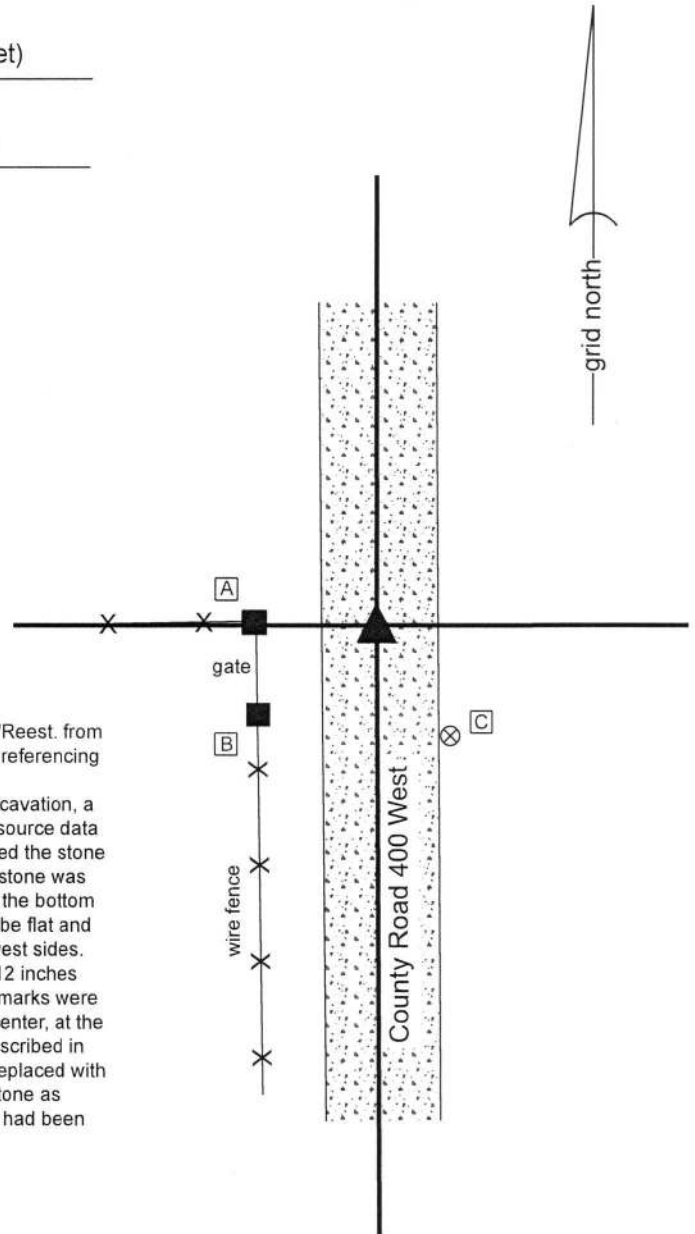
CORNER WITNESS DETAIL

SCALE 1" = 30' 

- A - Mag Nail set in E. side wood corner post, 2' a.g., 18.8'
- B - Mag Nail set in N.E. side wood gate post, 2' a.g., 23.1'
- C - Boone County witness mark, flush, 20.7'

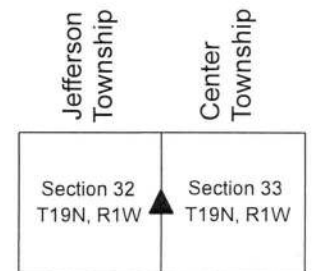
Boone County witness mark is a 3/8" diameter x 2' long rebar bearing a metal cap stamped "Boone County Witness Point."

The Harrison Monument was set in place of a stone found. A BCS record of April 7 & 17, 1884 states, with respect to this corner, "Reest. from Beech. Rock 14x12x10 mark +." No recent BCS tie cards were found referencing this corner. Excavation was performed at this corner on June 28, 2018. Prior to excavation, a vertical section of railroad rail was found at 2 inches below grade. No source data was found referencing the establishment of the rail. Excavation revealed the stone described in the 1884 record at 9 inches deep in the gravel road. The stone was embedded in the clay layer below the road, with the top of the stone at the bottom of the road bed. The north and south sides of the stone were found to be flat and vertical while the stone had a rounded character across the east and west sides. The stone was removed, measured, and found to be 14 inches tall by 12 inches E-W by 10 inches N-S, exactly matching the 1884 record. No specific marks were detected on the stone. The highest point of the stone was at the top, center, at the north edge. The stone was accepted as being the same monument described in the 1884 record and was held as marking the corner. The stone was replaced with a Harrison monument in the same position of the highest point of the stone as found. The vertical section of railroad rail, removed during excavation, had been 1.8 feet north and 0.7 foot west of the high point of the stone. This corner was originally established as a wood post in 1822.



Kenneth E. Hedge
 Kenneth E. Hedge, County Surveyor

James S. Swift
 James S. Swift, IN LS 20200054
 July 25, 2018



SECTION CORNER RECORD

BOONE COUNTY SURVEYOR'S OFFICE

NW 050-500

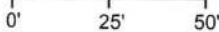
State Plane grid coordinates NAD83 (2011):
 North: 1748172.33 East: 3098344.25 (U.S. survey feet)

Type of monument: Harrison, 4" disk 'Section Corner'
 Depth: One inch below adjacent road surface

Indiana tie card references:
 IN02_T19NR1W31_44 IN02_T19NR1W32_36

CORNER WITNESS DETAIL

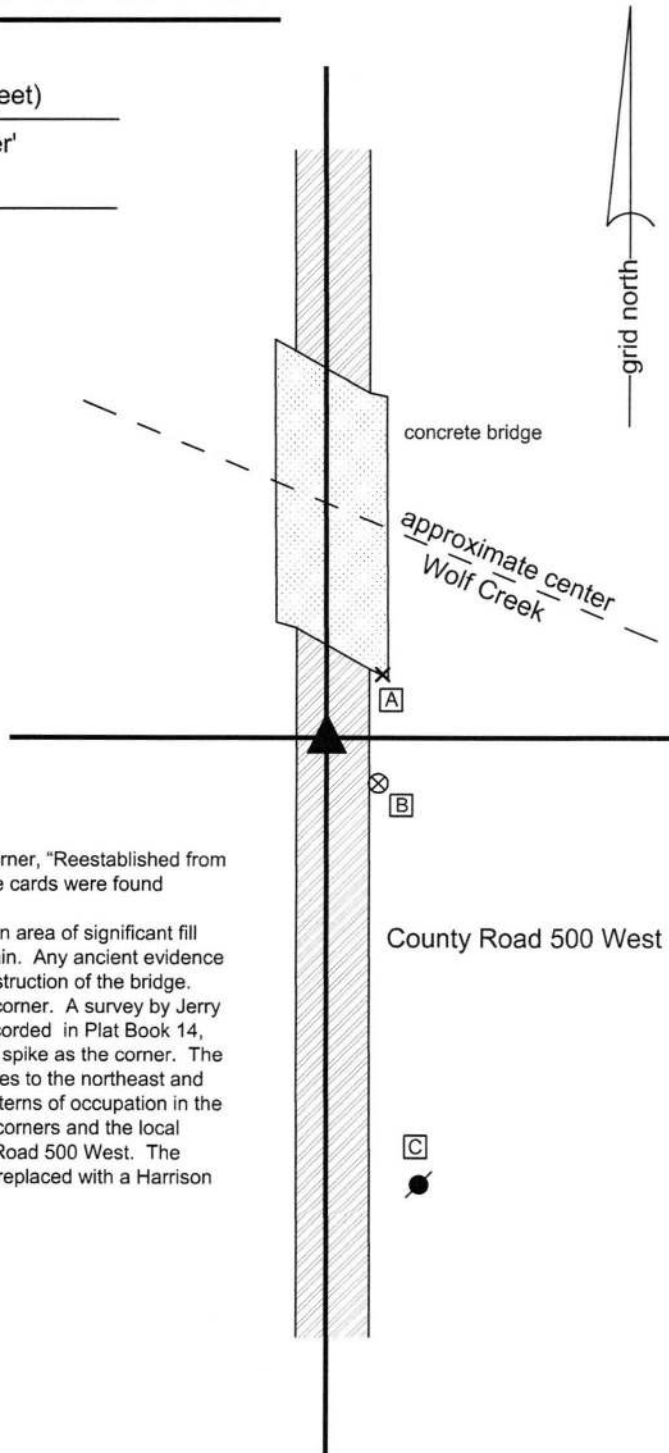
SCALE 1" = 50'



- A - "+" mark etched in base concrete wing wall, flush, 21.8'
- B - Boone County witness mark, flush, 17.8'
- C - Mag nail set in W. side power pole, 4' a.g., 117.3'

Boone County witness mark is a 3/8" diameter x 2' long rebar bearing a metal cap stamped "Boone County Witness Point."

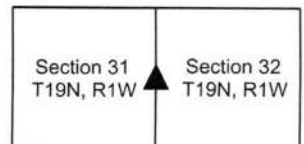
The Harrison monument was set in place of a railroad spike found. A BCS record dated October 10, 1867 states, with respect to this corner, "Reestablished from Oak (down). Set rock 12, 7 1/2 marked + on top." No recent BCS tie cards were found referencing this corner. No significant excavation was performed at this corner as it falls in an area of significant fill on the southern approach to a bridge over the Wolf Creek Open Drain. Any ancient evidence of the corner would have been either destroyed or buried in the construction of the bridge. The plans for Bridge 108 dated April 5, 1965, do not reference the corner. A survey by Jerry L. Carter, being the Lane Minor Plat, certified March 4, 2004 and recorded in Plat Book 14, page 50, Boone County Recorder's Office, shows the found railroad spike as the corner. The railroad spike fits with the deed descriptions of the adjoining properties to the northeast and southeast, both as shown on the Carter plat and as observed by patterns of occupation in the field. The position of the railroad spike also fits well with proximate corners and the local evidence in the form of the existing north-south roadway of County Road 500 West. The railroad spike was held as marking the corner. It was removed and replaced with a Harrison monument on September 6, 2016. This corner was originally established as a wood post in 1822.



Kenneth E. Hedge
 Kenneth E. Hedge, County Surveyor

James S. Swift
 James S. Swift, IN LS 20200054
 March 23, 2017

Jefferson Township



SECTION CORNER RECORD

BOONE COUNTY SURVEYOR'S OFFICE

NW 100-400

State Plane grid coordinates NAD83 (2011):

North: 1750809.53 East: 3103635.14 (U.S. survey feet)

Type of monument: Plug in monument box, INDOT Type B

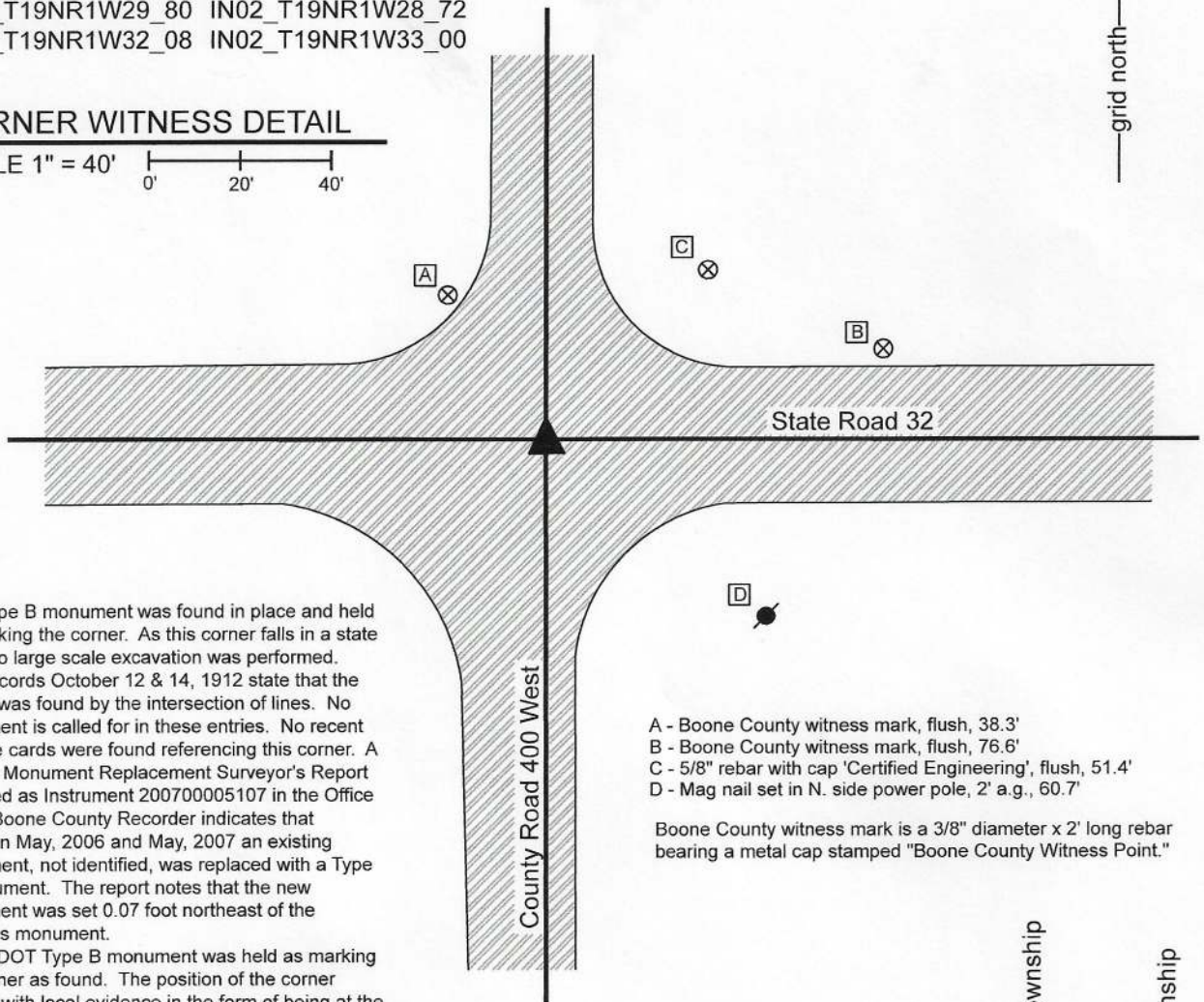
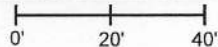
Depth: Flush with adjacent road surface

Indiana tie card references:

IN02_T19NR1W29_80 IN02_T19NR1W28_72
 IN02_T19NR1W32_08 IN02_T19NR1W33_00

CORNER WITNESS DETAIL

SCALE 1" = 40'



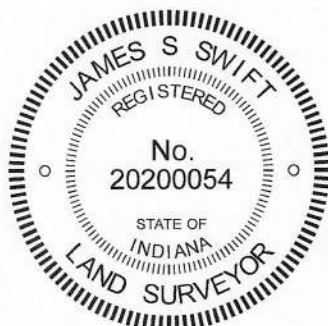
The Type B monument was found in place and held as marking the corner. As this corner falls in a state road, no large scale excavation was performed. BCS records October 12 & 14, 1912 state that the corner was found by the intersection of lines. No monument is called for in these entries. No recent BCS tie cards were found referencing this corner. A Survey Monument Replacement Surveyor's Report recorded as Instrument 200700005107 in the Office of the Boone County Recorder indicates that between May, 2006 and May, 2007 an existing monument, not identified, was replaced with a Type B monument. The report notes that the new monument was set 0.07 foot northeast of the previous monument.

The INDOT Type B monument was held as marking the corner as found. The position of the corner agrees with local evidence in the form of being at the intersection of the two roads. This appears to agree as well with the 1912 records.

This corner was originally established as a wood post in 1822.

- A - Boone County witness mark, flush, 38.3'
- B - Boone County witness mark, flush, 76.6'
- C - 5/8" rebar with cap 'Certified Engineering', flush, 51.4'
- D - Mag nail set in N. side power pole, 2' a.g., 60.7'

Boone County witness mark is a 3/8" diameter x 2' long rebar bearing a metal cap stamped "Boone County Witness Point."



Kenneth E. Hedge
 Kenneth E. Hedge, County Surveyor

James S. Swift
 James S. Swift, IN LS 20200054

May 11, 2020

Jefferson Township

Center Township

Section 29 T19N, R1W	Section 28 T19N, R1W
Section 32 T19N, R1W	Section 33 T19N, R1W

SECTION CORNER RECORD

NW 100-450

BOONE COUNTY SURVEYOR'S OFFICE

State Plane grid coordinates NAD83 (2011):

North: 1750812.22 East: 3100979.62 (U.S. survey feet)

Type of monument: Harrison, 4" disk 'Section Corner'

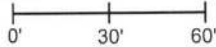
Depth: Flush with adjacent ground

Indiana tie card references:

IN02_T19NR1W29_76 IN02_T19NR1W32_04

CORNER WITNESS DETAIL

SCALE 1" = 60'



A - Boone County witness mark, flush, 52.3'

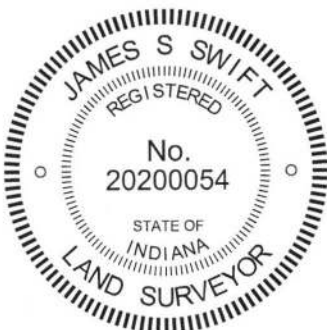
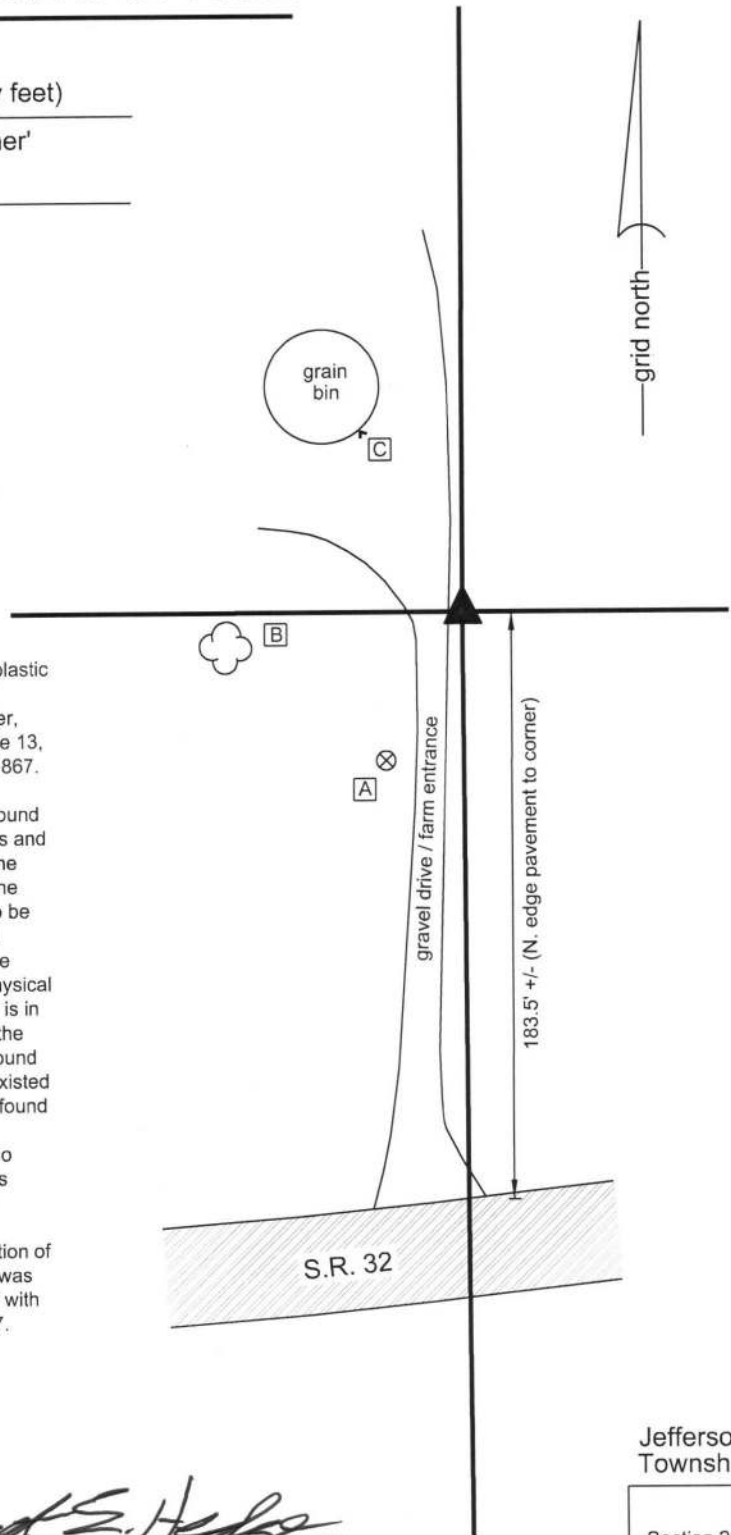
B - N.E. edge, 36 inch diameter Maple tree, 1' up, 66.8'

C - Anchor bolt, S.E. edge, grain bin, 65.4'

The Harrison monument was set in place of a 5/8 inch rebar with plastic cap stamped "Section Corner" found.

A BCS record of October 10, 1867 states, with respect to this corner, Reest'd from stump of both trees. Set stake." A BCS record of June 13, 1873 states "Reest'd from the stake driven in survey of Oct. 10th, 1867. Sect. 32." Set Rock 15x12x7."

No recent BCS tie cards were found referencing this corner. The found rebar is known to have been accepted as the corner for many years and fits with deed calls to the center of S.R. 32 recited in the deed for the adjoining property to the east, recorded in Instrument 0408581 in the Office of the Boone County Recorder. The plastic cap appeared to be substantially aged. The rebar was generally undisturbed as found, having been protected by the installation of a steel t-post next to the rebar by the adjacent landowner. Other than the rebar, the only physical evidence of the section lines in the immediate vicinity of the corner is in the form of a north-south field division separating the farm yard to the west from the tilled field to the east. No evidence of fencing was found along the line and it is believed that any fencing which may have existed along the north-south line has been removed for a long time. The found rebar was in-line with the field division. As the corner falls a short distance north of State Road 32, which generally runs east-west, no evidence of the section lines to the east and west of the corner was found, nor is it likely that any has existed in recent years. Several attempts to find the 1873 record stone with a probe beginning in October, 2015 yielded no further evidence of the corner. The position of the rebar fits well with proximate corners and local deed calls and was held as marking the corner. The rebar was removed and replaced with a Harrison monument in the same position on September 22, 2017. This corner was originally established as a wood post in 1822.



Kenneth E. Hedge
Kenneth E. Hedge, County Surveyor

James S. Swift
James S. Swift, IN LS 20200054
October 3, 2017

Jefferson Township

Section 29
T19N, R1W

Section 32
T19N, R1W

SECTION CORNER RECORD

BOONE COUNTY SURVEYOR'S OFFICE

NW 100-500

State Plane grid coordinates NAD83 (2011):

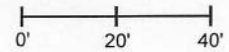
North: 1750807.99 East: 3098335.91 (U.S. survey feet)

Type of monument: Plug in monument box, INDOT Type B

Depth: Flush with adjacent road surface

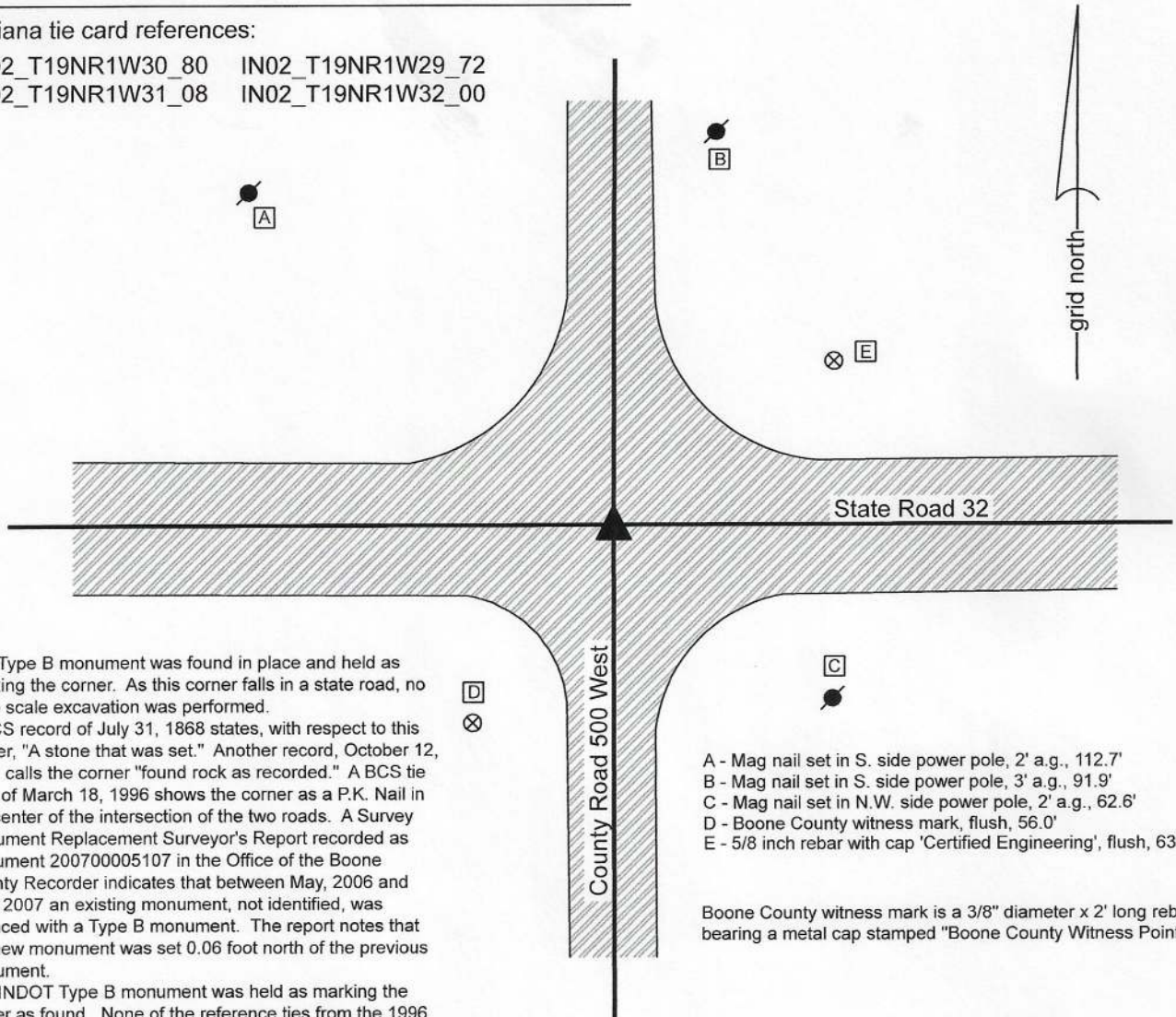
CORNER WITNESS DETAIL

SCALE 1" = 40'



Indiana tie card references:

IN02_T19NR1W30_80 IN02_T19NR1W29_72
 IN02_T19NR1W31_08 IN02_T19NR1W32_00



The Type B monument was found in place and held as marking the corner. As this corner falls in a state road, no large scale excavation was performed.

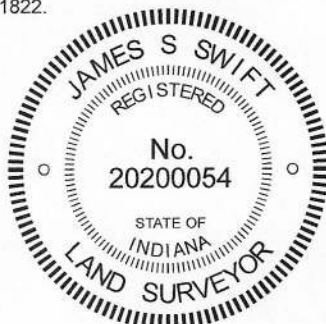
A BCS record of July 31, 1868 states, with respect to this corner, "A stone that was set." Another record, October 12, 1912 calls the corner "found rock as recorded." A BCS tie card of March 18, 1996 shows the corner as a P.K. Nail in the center of the intersection of the two roads. A Survey Monument Replacement Surveyor's Report recorded as Instrument 200700005107 in the Office of the Boone County Recorder indicates that between May, 2006 and May, 2007 an existing monument, not identified, was replaced with a Type B monument. The report notes that the new monument was set 0.06 foot north of the previous monument.

The INDOT Type B monument was held as marking the corner as found. None of the reference ties from the 1996 tie card were found. It is assumed, but not proven, that the Type B is in the same position as the previously held PK Nail.

This corner was originally established as a wood post in 1822.

- A - Mag nail set in S. side power pole, 2' a.g., 112.7'
- B - Mag nail set in S. side power pole, 3' a.g., 91.9'
- C - Mag nail set in N.W. side power pole, 2' a.g., 62.6'
- D - Boone County witness mark, flush, 56.0'
- E - 5/8 inch rebar with cap 'Certified Engineering', flush, 63.1'

Boone County witness mark is a 3/8" diameter x 2' long rebar bearing a metal cap stamped "Boone County Witness Point."



Kenneth E. Hedge
 Kenneth E. Hedge, County Surveyor

James S. Swift
 James S. Swift, IN LS 20200054
 May 11, 2020

Jefferson Township

Section 30 T19N, R1W	Section 29 T19N, R1W
Section 31 T19N, R1W	Section 32 T19N, R1W