

SECTION CORNER RECORD

SW 500-1000

BOONE COUNTY SURVEYOR'S OFFICE

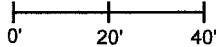
State Plane grid coordinates NAD83 (2011):
North: 1718861.47 East: 3072064.70 (U.S. survey feet)

Type of monument: plug in monument box, INDOT 'Type B'
Depth: Three inches below adjacent road surface

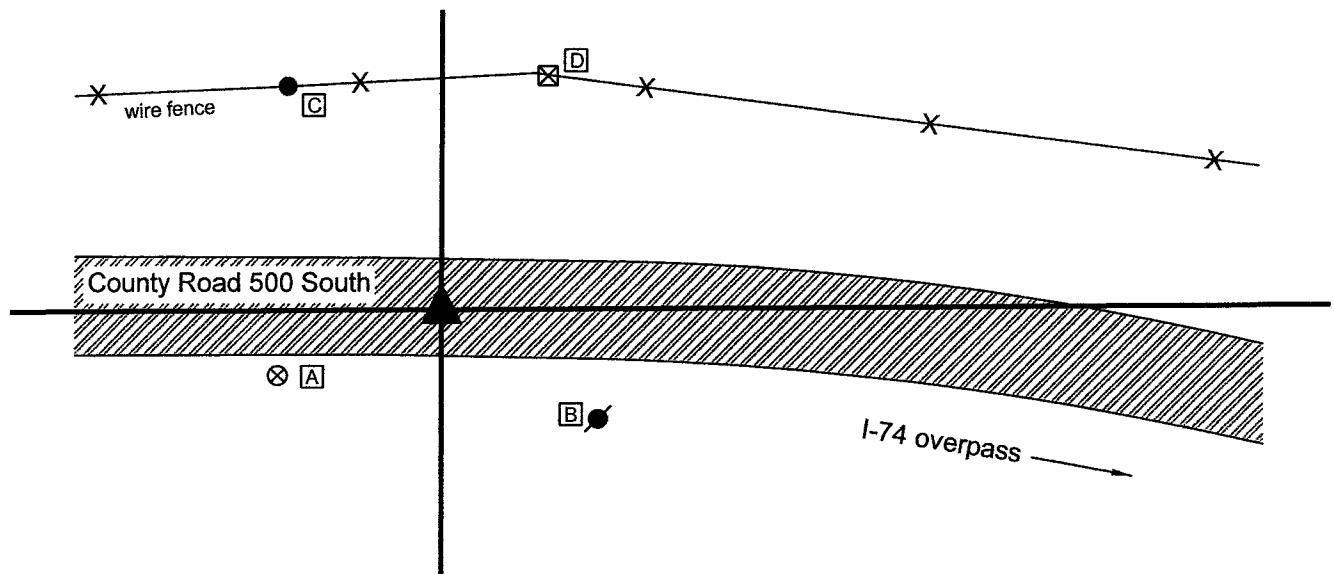
Indiana tie card references:
IN02_T18NR2W28_72 IN02_T18NR2W29_80
IN02_T18NR2W32_08 IN02_T18NR2W33_00

CORNER WITNESS DETAIL

SCALE 1" = 40'

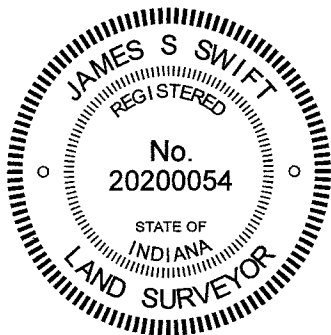


- A - Boone County witness mark, flush, 36.9'
- B - Mag nail set in N. side power pole, 2' a.g., 39.9'
- C - Mag nail set in S. side wood post, 2' a.g., 56.6'
- D - S.W. corner, INDOT ROW marker, flush, 53.4'



The INDOT Type B Monument was found and held as marking the corner. A BCS record dated April 22, 1870 states, with respect to this corner, "Set Rock 17.16.15 +." No recent BCS tie cards were found referencing the corner. The plans for interstate 74, as revised February 16, 1974, show the overpass of County Road 500 South over I-74 as project 74-2(33)47. The sheet provided by INDOT is not entirely legible but appears to show the section line crossing County Road 500 South with the label "Monument Required" apparently pointing at the section corner at a point slightly west of a substantial bend in the R/W on the north side of the road. Station data and specifics of the corner are not clear, due to the poor quality of this particular plan sheet. However, it appears that a monument was set to mark the section corner at the time of the construction of the overpass. The position of the found monument appears to agree with the position shown on the plans, though this is not specifically proven due to the lack of legible information. The found monument falls in an area of substantial cut, hence no excavation was performed, due to the fact that any ancient monument such as a stone would have been destroyed when the roadway was cut. It is noted, however, that the found monument agrees remarkably well with the relative positions of adjacent corners. The Type B monument was held as marking the corner.

This corner was originally established as a wood post in 1820.



Kenneth E. Hedge
 Kenneth E. Hedge, County Surveyor

James S. Swift
 James S. Swift, IN LS 20200054
 June 16, 2021

Jackson Township

Section 29 T18N, R2W	Section 28 T18N, R2W
Section 32 T18N, R2W	Section 33 T18N, R2W

SECTION CORNER RECORD

SW 500-1050

BOONE COUNTY SURVEYOR'S OFFICE

State Plane grid coordinates NAD83 (2011):

North: 1718848.70 East: 3069418.16 (U.S. survey feet)

Type of monument: Harrison, 4" disk 'Section Corner'

Depth: One inch below adjacent road surface

Indiana tie card references:

IN02_T18NR2W29_76 IN02_T18NR2W32_04

CORNER WITNESS DETAIL

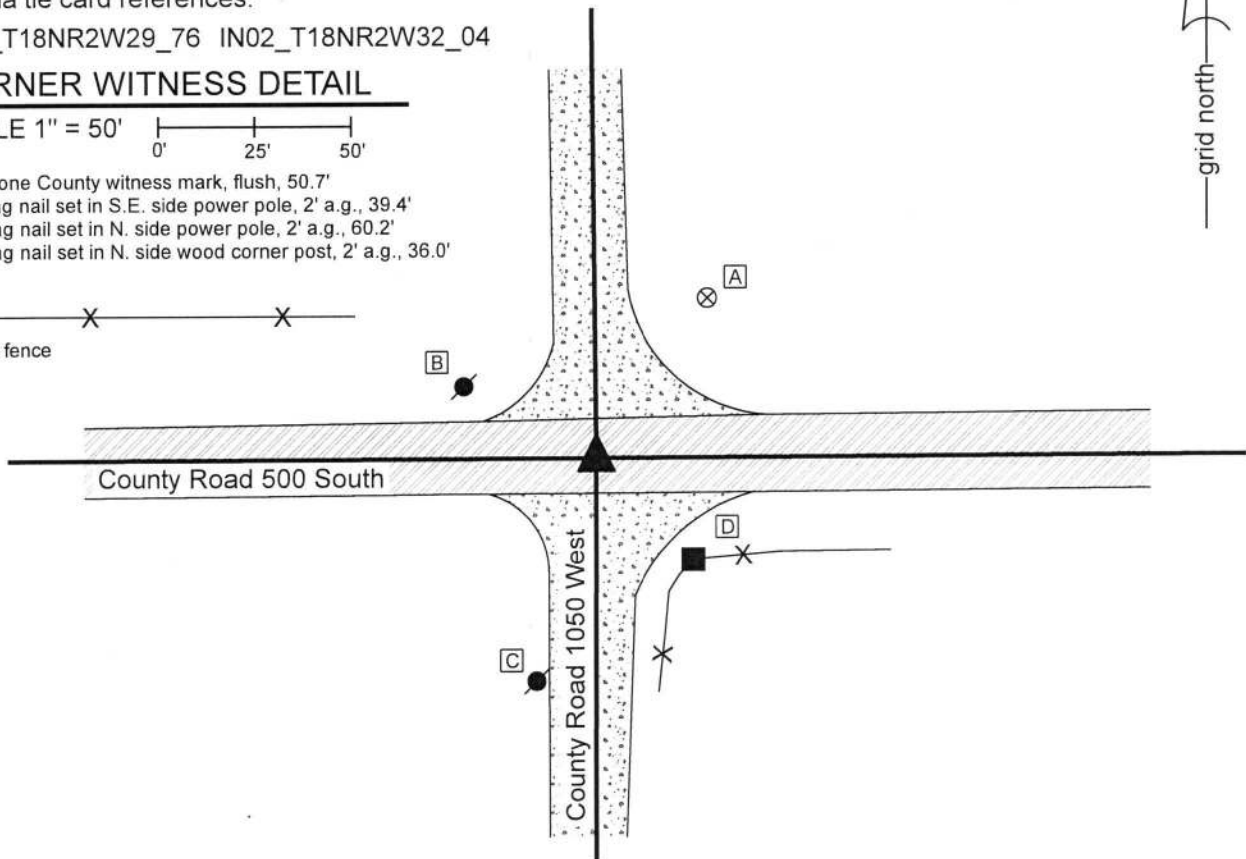
SCALE 1" = 50'



- A - Boone County witness mark, flush, 50.7'
- B - Mag nail set in S.E. side power pole, 2' a.g., 39.4'
- C - Mag nail set in N. side power pole, 2' a.g., 60.2'
- D - Mag nail set in N. side wood corner post, 2' a.g., 36.0'



- Wire fence



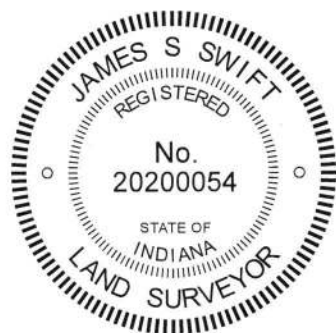
The Harrison monument was set in place of a rebar found.

A BCS record dated April 22, 1870 states, with respect to this corner, "Rock that was set. We marked +." A BCS tie card dated January 18, 1994 shows the corner as a railroad spike.

This corner was excavated on October 24, 2019. Prior to excavation, a 1/2 inch diameter rebar was found at 4 inches deep at the center of the intersection of the two county roads. Excavation of an area extending 2.5 feet north, 2.5 feet south, 4 feet east and 2.5 feet west of the rebar revealed no further evidence of the corner. The bottom of the road bed was found at 16 inches deep. Excavation was performed to approximately 20 inches deep. Neither the stone called in the 1870 record nor the railroad spike called in 1994 record were found. The position of the found rebar fits well with local evidence in the form of the centers of the existing roadways and fits well with the relative positions of proximate corners.

The rebar was accepted as the best available evidence of the corner and was held as marking the corner. The rebar was removed and replaced with a Harrison monument in the same position.

This corner was originally established in 1820.



Kenneth E. Hedge, County Surveyor

James S. Swift, IN LS 20200054
December 3, 2019

Jackson
Township

Section 29
T18N, R2W

Section 32
T18N, R2W

SECTION CORNER RECORD

SW 500-1100

BOONE COUNTY SURVEYOR'S OFFICE

State Plane grid coordinates NAD83 (2011):

North: 1718840.52 East: 3066755.32 (U.S. survey feet)

Type of monument: Harrison, 4" disk 'Section Corner'

Depth: One inch below adjacent road surface

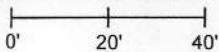
Indiana tie card references:

IN02_T18NR2W29_72 IN02_T18NR2W30_80

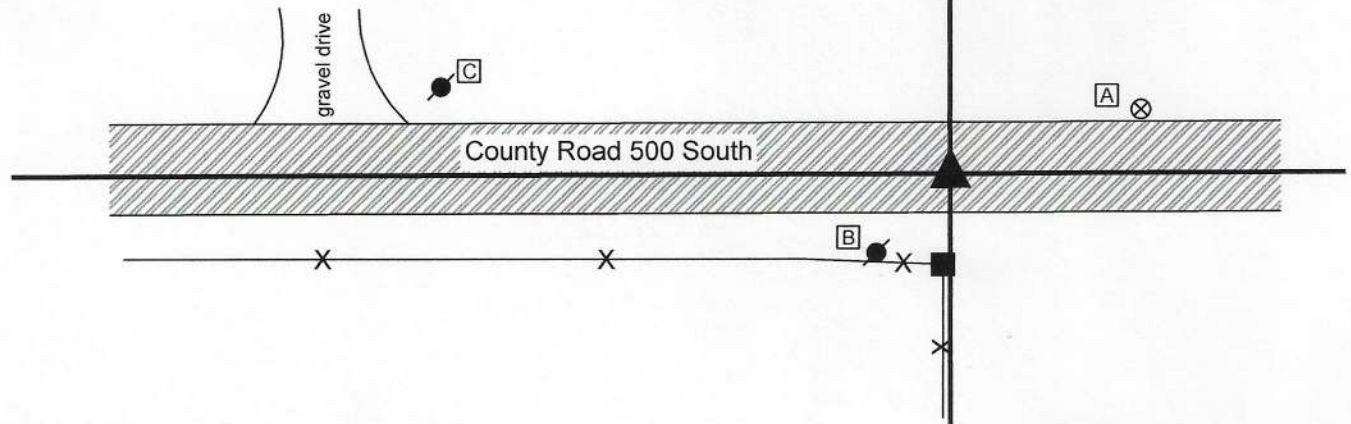
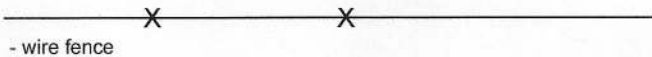
IN02_T18NR2W31_08 IN02_T18NR2W32_00

CORNER WITNESS DETAIL

SCALE 1" = 40'



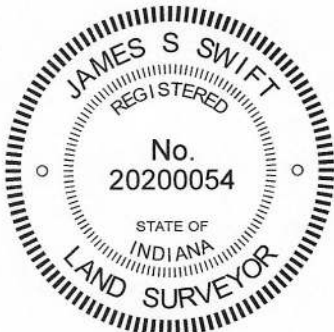
- A - Boone County witness mark, flush, 41.5'
- B - Mag nail set in N. side power pole, 2' a.g., 22.4'
- C - Mag nail set in E. side power pole, 2' a.g., 106.9'



The Harrison monument was set in place of a stone found.

A BCS record of September 19, 1895 states, with respect to this corner, "Set Rock 24x12x8." No recent BCS tie cards were found referencing this corner.

Excavation was performed at this corner on October 21, 2020. Prior to excavation, a rebar was found at the surface of the road, generally in-line with a fence to the south. Excavation revealed a stone found at 3 inches deep, slightly southeast of the found rebar. The stone appeared to be vertical but was broken as found, being in several pieces. The top of the stone had been embedded in the pavement layer of the road and most of the stone was in the fill material of the road bed. The stone was removed, measured, and found to be 12 inches north-south by 8 inches east-west by 15 inches tall. The bottom four inches of the stone had been embedded in the clay layer below the road bed. The stone matched two of the record dimensions but not the third. As noted above, the stone was broken as found. It is possible that a significant portion of the top of the rock had been broken previously, accounting for the fact that it was 15 inches tall, not 24 inches, per the 1895 record. The stone was held as marking the corner. A Harrison monument was set in place of the top, center of the stone as found. Both the stone and rebar were removed during excavation. The rebar had been 0.6 foot north and 1.2 foot west of the top, center of the stone.



Kenneth E. Hedge
Kenneth E. Hedge, County Surveyor

James S. Swift
James S. Swift, IN LS 20200054
October 28, 2020

Jackson Township

Section 30 T18N, R2W	Section 29 T18N, R2W
Section 31 T18N, R2W	Section 32 T18N, R2W

SECTION CORNER RECORD

SW 550-1000

BOONE COUNTY SURVEYOR'S OFFICE

State Plane grid coordinates NAD83 (2011):

North: 1716212.93 East: 3072064.21 (U.S. survey feet)

Type of monument: 24" length of 5/8" diameter rebar with aluminum cap stamped, 'Boone County Surveyor'

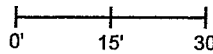
Depth: 14" below surrounding ground

Indiana tie card references:

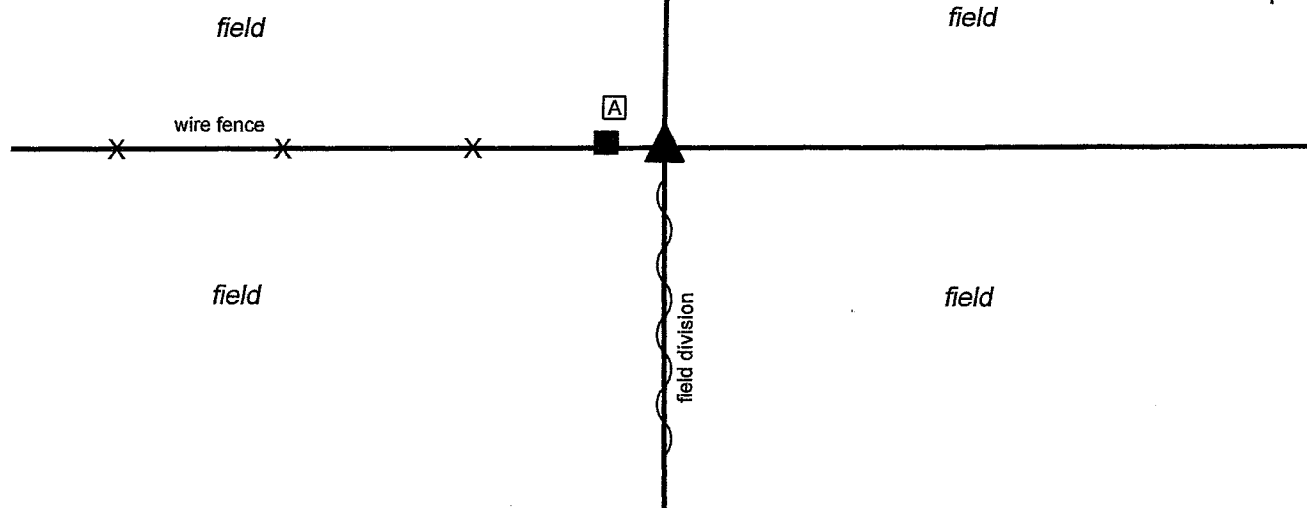
IN02_T18NR2W32_44 IN02_T18NR2W33_36

CORNER WITNESS DETAIL

SCALE 1" = 30'



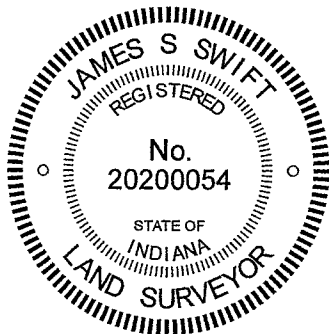
A - Mag nail set in E. side wood corner post, 2' a.g., 9.2'



The rebar with Boone County cap was set in place of a stone found.

A BCS record of April 22, 1870 states, with respect to this corner, "Reest. from trees (down). Set two rocks. One 8.6.5 1/2 mkd +. Top one 16.10.5 +." No recent BCS tie cards were found referencing this corner, nor were any surveys recorded in the Boone County Recorder's Office found referencing the corner.

Excavation was performed at this corner on April 23, 2021. Prior to excavation, it was observed that the corner almost certainly fell in an area of tilled field. The existing east-west fence providing evidence of the north line of the southeast quarter of Section 32 terminates at an end post approximately nine feet west of the corner. The existing north-south fence which provides evidence of the east line of said southeast quarter terminates at an old corner post approximately 514 feet south of the corner. An estimated position for the corner was computed at the intersection of the easterly prolongation of the east-west fence and the northerly prolongation of a line connecting a stone found at the southeast corner of Section 32 (see BCS Corner SW 600-1000) through the post 514 feet south of subject corner. Accessory evidence of the corners 1/2 mile and 1/4 mile, respectively, to both the east and west indicated that the computed position fell in a reasonable location. Excavation at the computed position on April 23, 2021 revealed substantial evidence of an old corner, in the form of numerous small rocks and wire fencing found embedded in the field which appeared be oriented to the south and east. No post was found, but the buried pieces of fence indicated the previous presence of a post. During excavation, the lower stone described in the 1870 record was found at 16 inches deep, being the lowest rock found in the immediate vicinity. The dimensions of the found stone matched the 1870 call and a "+" mark was clearly visible, etched on the surface of the stone. It is observed that the 16-inch depth of this stone precisely matched the largest dimension recorded for the upper stone. Clearly, the upper stone has been previously removed, but the lower stone remained. The found stone was held as marking the corner. The stone was removed and replaced with a 24-inch length of 5/8-inch rebar with metal 'Boone County Surveyor' cap set at 14 inches deep in the tilled field, 9.2 feet east of the existing end post which marks the easterly terminus of the existing east-west fence.



Kenneth E. Hedge
Kenneth E. Hedge, County Surveyor

James S. Swift
James S. Swift, IN LS 20200054

May 5, 2020

Jackson Township

Section 32 T18N, R2W	Section 33 T18N, R2W
-------------------------	-------------------------

SECTION CORNER RECORD

SW 600-1000

BOONE COUNTY SURVEYOR'S OFFICE

State Plane grid coordinates NAD83 (2011):

Corner 1: North: 1713559.98 East: 3072095.16 (U.S. survey feet)

Corner 2: North: 1713560.06 East: 3072114.96 (U.S. survey feet)

Corner 1: Harrison, 4" disk 'Section Corner', 6" below grade

Corner 2: Harrison, 4" disk 'Section Corner', 6" below grade

Indiana tie card references:

IN02_T18NR2W33_72 IN02_T18NR2W32_80

IN02_T17NR2W05_08 IN02_T17NR2W04_00

① S.E. Corner, Section 32
S.W. Corner, Section 33
T 18 N, R 2 W
Harrison Monument Set

② N.E. Corner, Section 5
N.W. Corner, Section 4
T 17 N, R 2 W
Harrison Monument Set

Distance between monuments: 30 links = 19.80'

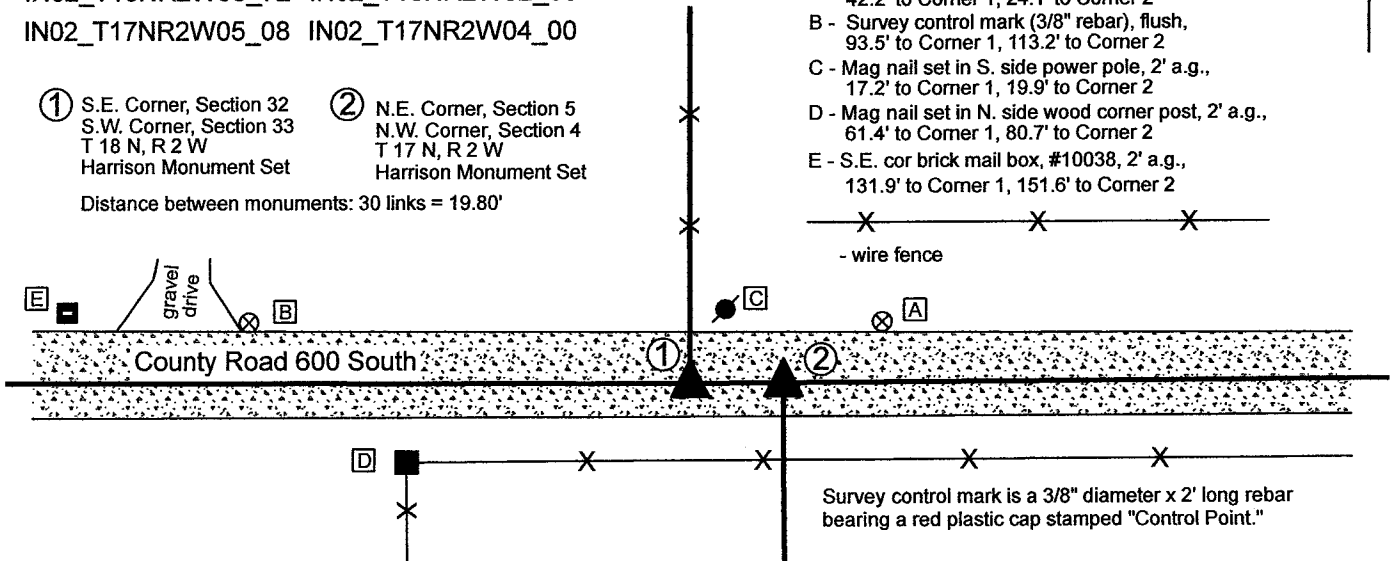
CORNER WITNESS DETAIL

SCALE 1" = 40'

- A - Survey control mark (3/8" rebar), flush, 42.2' to Corner 1, 24.1' to Corner 2
- B - Survey control mark (3/8" rebar), flush, 93.5' to Corner 1, 113.2' to Corner 2
- C - Mag nail set in S. side power pole, 2' a.g., 17.2' to Corner 1, 19.9' to Corner 2
- D - Mag nail set in N. side wood corner post, 2' a.g., 61.4' to Corner 1, 80.7' to Corner 2
- E - S.E. cor brick mail box, #10038, 2' a.g., 131.9' to Corner 1, 151.6' to Corner 2

- wire fence

grid north

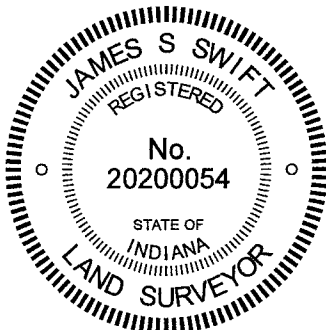


Survey control mark is a 3/8" diameter x 2' long rebar bearing a red plastic cap stamped "Control Point."

The Harrison monument at Corner 1 was set in place of a stone found. The Harrison monument at Corner 2 was set at a calculated position. Corner 1 was originally established as a wood post in 1819. Corner 2 was established in 1820 at a closing distance of 30 links (19.8 feet) east of Corner 1. A BCS record of November 1, 1865 states, with respect to Corner 2, "Found by measuring the lap from cor. 32 & 33, township 18. Set a rock 12.8.6 + mark on S. side. Is very near the edge of a large Oak on S.W." A BCS record of December 13-14, 1894 states, with respect to Corner 1, "Reestablished from lap. Set Rock + 14.10.10. Corner Rock Sects 4 & 5 East 30 [links]." It is noted that the term "lap" refers to the offset between corners on a township or range line. It is also noted that in 1865, some object, perhaps the original wood post, must have been present at Corner 1, from which Corner 2 was established. This object was evidently no longer present in 1895, at which time Corner 1 was established relative to the position of the rock at Corner 2. Both records clearly indicate that the corners were set at 30 links (19.8 feet) apart, which is the same closing offset noted in the 1820 federal field notes. No recent BCS tie cards were found referencing the corner. Surveys by William J. Hudson, recorded as Miscellaneous Record 139, pages 939 - 945 in the Office of the Boone County Recorder, call Corner 2 as a railroad spike set with a statement that this position was established by a previous survey, with no reference information about the previous survey.

These corners were excavated on March 19, 2021. Prior to excavation, a rebar with red plastic cap (marking illegible) was found ostensibly marking Corner 1. No metal monument was found marking Corner 2. Excavation revealed a stone found at Corner 1 at 6 inches deep. The stone measured 14 inches tall by 8 inches N-S by 4 inches E-W. The stone had clearly been broken previously, presumably by road grading equipment, which may account for the variation between the measured size and that which was noted in 1895. The stone was adjacent to the found rebar, in line with the old fence to the north. Excavation of an area 10 feet E-W by 4 feet N-S at Corner 2 revealed no further evidence of that corner. The position held by Hudson appears to have been approximately 7 feet west of a position 30 links East of Corner 1. Excavation at Corner 2 encompassed both the computed Hudson position and the computed position 30 links East of Corner 1. Deeds for land in section 4 and 5 either use the description created by Hudson, which calls for the fence shown on this drawing, west of both corners, or use acreage calls which are inconclusive with respect to the position of Corner 2. The stone at Corner 1 was held as marking that corner. Corner 2 was established at 30 links east, per the federal field notes and two previous BCS records. The fact that no stone was found at Corner 2 may be due to the large Oak tree noted in the 1865 record. That tree is clearly no longer present, and its removal may have also removed the stone. It is also noted that the stone found at Corner 1 had clearly been damaged in the past. Road grading equipment may have also removed the stone at Corner 2.

A Harrison monument was set in place of the found stone at Corner 1 on March 19, 2021. A Harrison monument was set at Corner 2, at the computed position 30 links east of Corner 1, on September 14, 2021.



Kenneth E. Hedge
Kenneth E. Hedge, County Surveyor

James S. Swift
James S. Swift, IN LS 20200054
September 15, 2021

Jackson Township

Section 32 T18N, R2W	Section 33 T18N, R2W
Section 5 T17N, R2W	Section 4 T17N, R2W

SECTION CORNER RECORD

SW 600-1050

BOONE COUNTY SURVEYOR'S OFFICE

State Plane grid coordinates NAD83 (2011):

Corner 1: North: 1713563.98 East: 3069424.56 (U.S. survey feet)

Corner 2: North: 1713563.91 East: 3069471.75 (U.S. survey feet)

Type of monument: Harrison, 4" disk 'Section Corner'

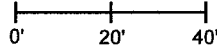
Depth: 6" below adjacent gravel road surface.

Indiana tie card references:

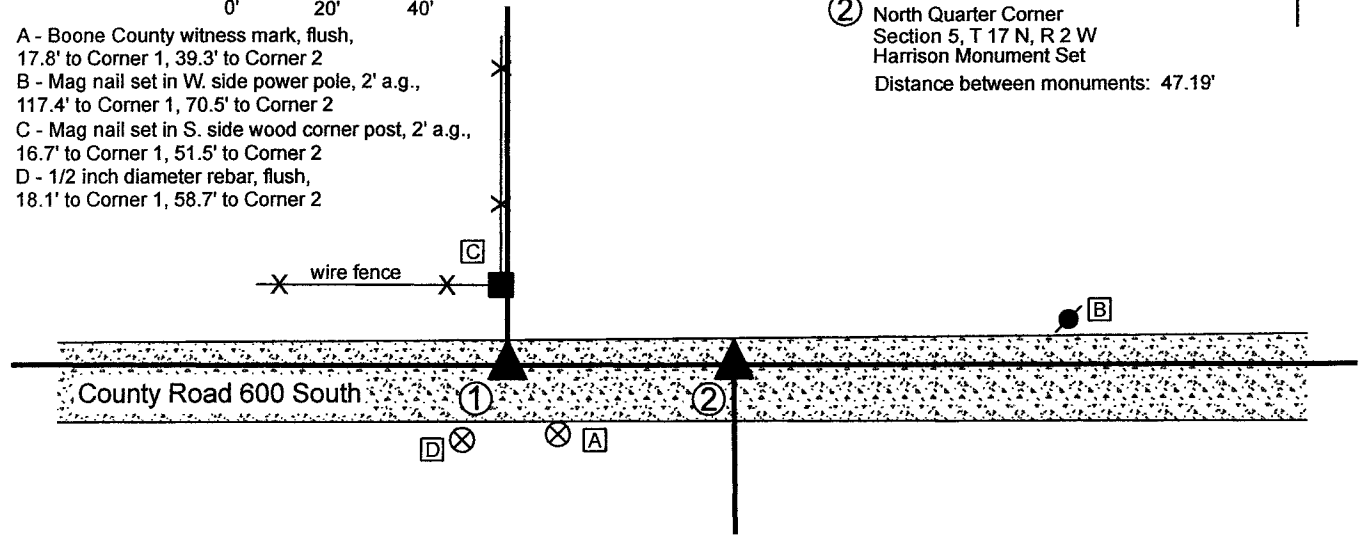
IN02_T18NR2W32_76 IN02_T17NR2W05_04

CORNER WITNESS DETAIL

SCALE 1" = 40'



- A - Boone County witness mark, flush, 17.8' to Corner 1, 39.3' to Corner 2
- B - Mag nail set in W. side power pole, 2' a.g., 117.4' to Corner 1, 70.5' to Corner 2
- C - Mag nail set in S. side wood corner post, 2' a.g., 16.7' to Corner 1, 51.5' to Corner 2
- D - 1/2 inch diameter rebar, flush, 18.1' to Corner 1, 58.7' to Corner 2



- ① South Quarter Corner
Section 32, T 18 N, R 2 W
Harrison Monument Set
- ② North Quarter Corner
Section 5, T 17 N, R 2 W
Harrison Monument Set
Distance between monuments: 47.19'

The Harrison monuments at both corners were set in place of 1/2-inch diameter rebars found.

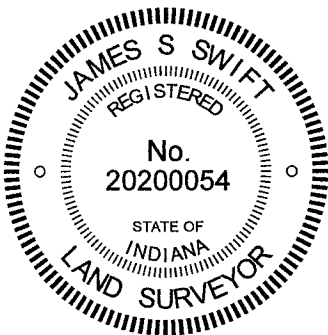
A BCS record of December 13-14, 1894 states, with respect to Corner 1, "Point from which 1/4 sect. cor. Sec. 5 bears east 71 [links]. A BCS record of January 1, 1894 states, with respect to Corner 2, "Set Rock 15,11,8 at corner. Set Rock + 8,12,12 under."

A BCS tie card dated January 18, 1994 shows both corners as railroad spikes, 47.19 feet apart. It is noted that the offset of 47.19 feet matches the average of the original federal closing distances (71.5 links) for the northeast and northwest corners of Section 5 but is 1/2 link (0.33 foot) greater than the offset called in the December, 1894 record. The adjacent land to the north is platted as Countrytime Minor Plat, Instrument 0406200, Boone County Recorder. This plat shows both corners as rebars found.

These corners were both excavated on March 29, 2021. Prior to excavation, 1/2-inch diameter rebars were found marking both corners. These monuments agreed with the positions shown on the 1994 BCS tie card and also shown on the Countrytime Minor Plat. Excavation revealed no further evidence of either corner. The stones called in the January 1894 record were not found, though it is noted that the road bed in the immediate vicinity of Corner 2 had clearly been disturbed previously. Generally, the road bed in this immediate vicinity is of minimal thickness, but an area of sandy, gravel material was found to extend much deeper in the immediate vicinity of the rebar marking Corner 2. Perhaps this material represents the position of the two stones which had been previously removed. It is also evident that the railroad spikes called in the 1994 tie card have been replaced with 1/2-inch diameter rebars at some point.

The found rebars were held as marking the respective corners. These monuments were removed and replaced with Harrison monuments in the same positions on March 29, 2021.

Corner 1 was originally established as a wood post in 1819. Corner 2 is not an original federal corner.



Kenneth E. Hedge

 Kenneth E. Hedge, County Surveyor

James S. Swift

 James S. Swift, IN LS 20200054
 April 21, 2021

Jackson Township

Section 32
T18N, R2W

Section 5
T17N, R2W

SECTION CORNER RECORD

SW 600-1100

BOONE COUNTY SURVEYOR'S OFFICE

State Plane grid coordinates NAD83 (2011):

Corner 1: North: 1713571.45 East: 3066759.63 (U.S. survey feet)

Corner 2: North: 1713571.24 East: 3066834.21 (U.S. survey feet)

Type of monument: Harrison, 4" disk 'Section Corner'

Depth: Six inches below adjacent road surface

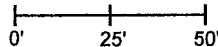
Indiana tie card references:

IN02_T18NR2W32_72 IN02_T18NR2W31_80

IN02_T17NR2W06_08 IN02_T17NR2W05_00

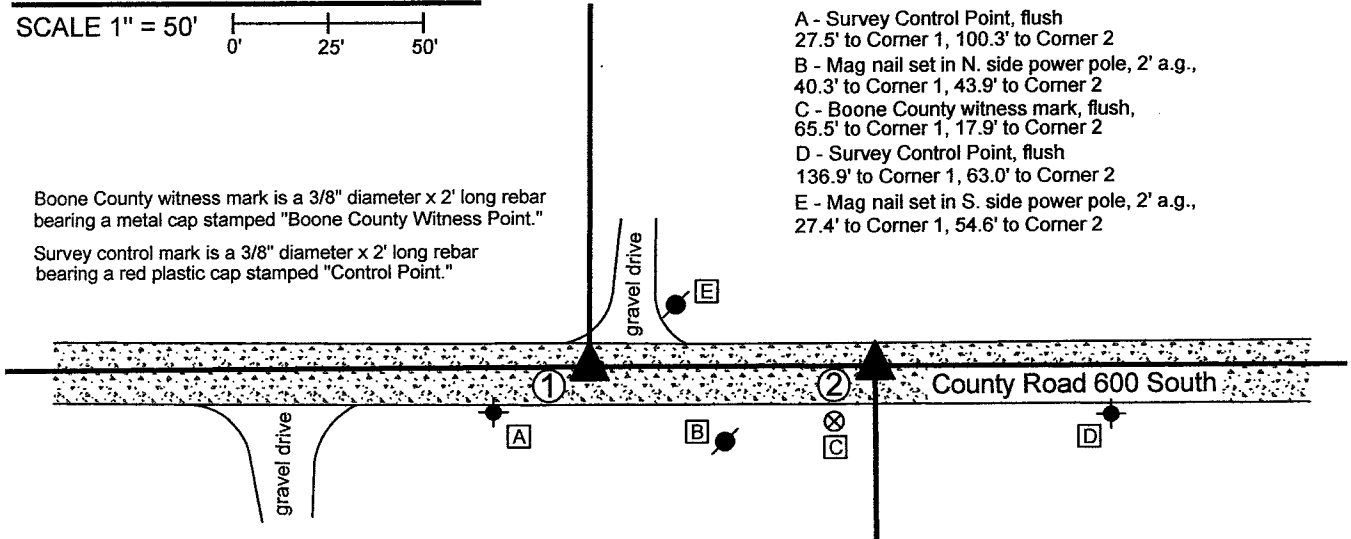
CORNER WITNESS DETAIL

SCALE 1" = 50'



Boone County witness mark is a 3/8" diameter x 2' long rebar bearing a metal cap stamped "Boone County Witness Point."

Survey control mark is a 3/8" diameter x 2' long rebar bearing a red plastic cap stamped "Control Point."



- A - Survey Control Point, flush
27.5' to Corner 1, 100.3' to Corner 2
- B - Mag nail set in N. side power pole, 2' a.g.,
40.3' to Corner 1, 43.9' to Corner 2
- C - Boone County witness mark, flush,
65.5' to Corner 1, 17.9' to Corner 2
- D - Survey Control Point, flush
136.9' to Corner 1, 63.0' to Corner 2
- E - Mag nail set in S. side power pole, 2' a.g.,
27.4' to Corner 1, 54.6' to Corner 2

① S.E. Corner, Section 31
S.W. Corner, Section 32
T 18 N, R 2 W
Harrison Monument Set

② N.E. Corner, Section 6
N.W. Corner, Section 5
T 17 N, R 2 W
Harrison Monument Set

Distance between monuments:
74.58' = 113 links

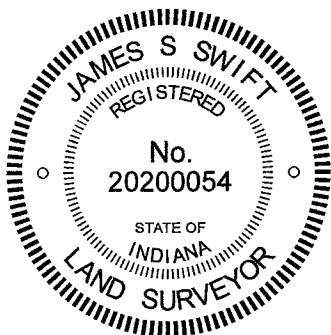


The Harrison monument at Corner 2 was set in place of a stone found. The Harrison monument at Corner 1 was set 113 links west of the stone found at Corner 2. No specific descriptions of Corner 1 were found in the Boone County Surveyor's Record beyond the original establishment of the corner as a wood post in 1819. A BCS record of December 14-15, 1870 states, with respect to Corner 2, "Reestablished. Set a Rock. 14.10.9 marked +." It is noted that the original federal field notes call for a closing offset of 113 links East for these corners.

A BCS tie card dated January 19, 1994 shows Corner 1 as a rebar and Corner 2 as a 1/2-inch rebar at the federal closing distance of 74.58 feet (113 links) apart. Corner 1 is shown in-line with a post on the north side of the road.

These corners were both excavated on March 19, 2021. Prior to excavation, the rebars shown on the 1994 tie card were found, slightly disturbed. Excavation at Corner 1 did not reveal further evidence of the corner. Excavation at Corner 2 revealed a large stone found at 6 inches deep in the road, slightly northwest of the 1/2-inch rebar referenced in the 1994 tie card. The top of the stone, as found was 18 inches E-W by 16 inches N-S. The stone was removed from the road and found to be, in full measure, 26 inches tall by 24 inches E-W by 16 inches N-S. The stone was fully embedded in the clay layer below the road bed, was vertical and oriented in cardinal directions. No specific marks were observed on the stone. This is not the monument referenced in the 1870 BCS record but is clearly a monument set with the purpose of marking the corner. The top, center of the stone was held as the specific position of Corner 2. The stone was removed and replaced with a Harrison monument in the same position on March 19, 2021. The position of Corner 1 was established on the westerly prolongation of the line connecting Corner 2 with a Harrison monument marking the standard corner 1/2 mile east (see BCS Corner SW 600-1050) at the record federal offset of 113 links or 74.58 feet. A Harrison monument was set at this position on April 19, 2021. It is noted that this position falls in-line with the existing occupation line to the north, which is trees with fragments of fence.

With respect to the monuments found prior to excavation and called in the 1994 tie card, the rebars (removed during excavation) had been 2.5 feet south and 2.5 feet east of the respective positions marked with Harrison monuments.



Kenneth E. Hedge
Kenneth E. Hedge, County Surveyor

James S. Swift
James S. Swift, IN LS 20200054
April 21, 2021

Jackson Township

Section 31 T18N, R2W	Section 32 T18N, R2W
Section 6 T17N, R2W	Section 5 T17N, R2W