

SECTION CORNER RECORD

BOONE COUNTY SURVEYOR'S OFFICE

SE 500-700

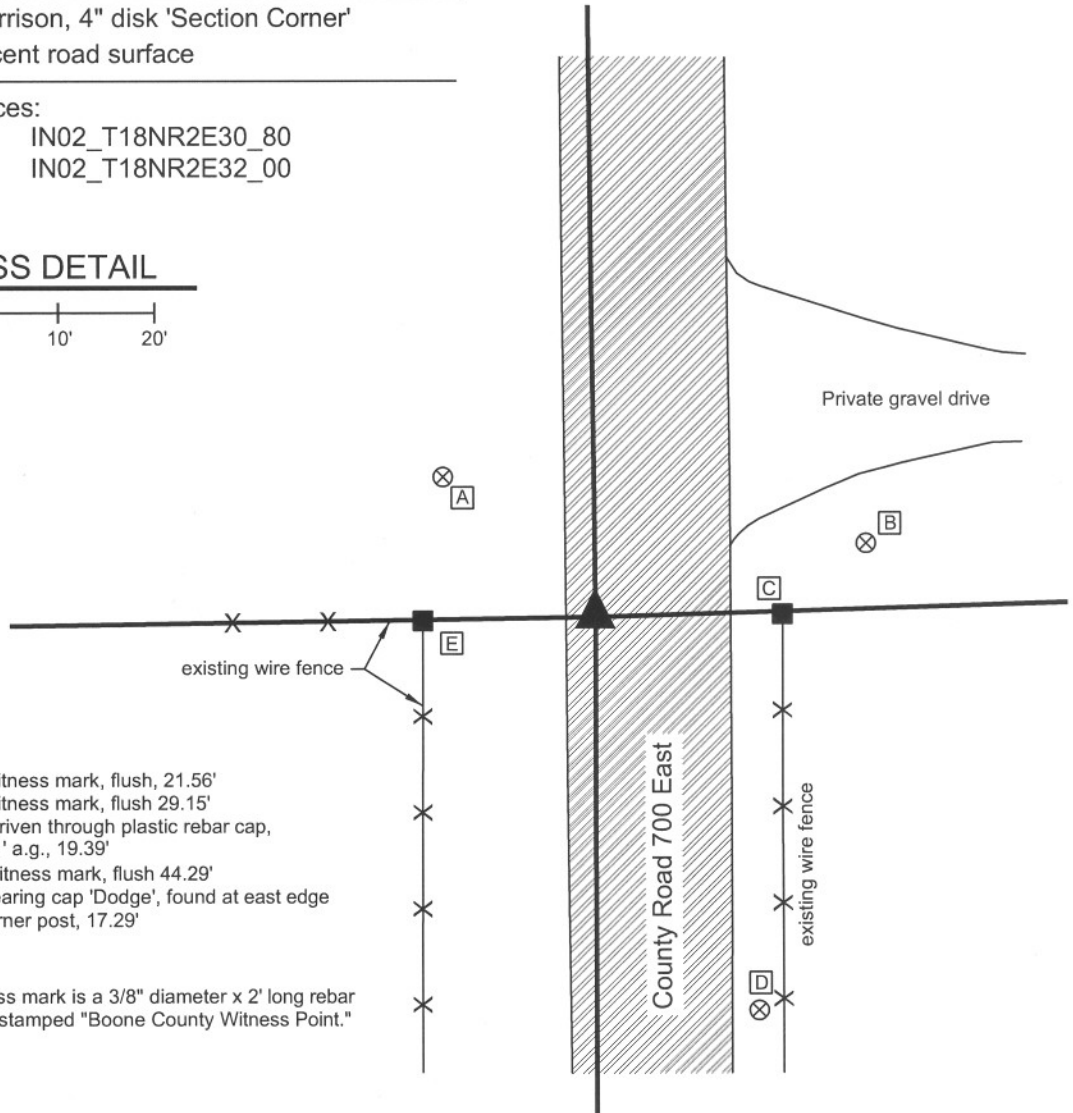
State Plane grid coordinates NAD83 (NSRS 2007):
 North: 1720034.42 East: 3162077.73 (U.S. survey feet)

Type of monument: Harrison, 4" disk 'Section Corner'
 Depth: 0.1' below adjacent road surface

Indiana tie card references:
 IN02_T18NR2E29_72 IN02_T18NR2E30_80
 IN02_T18NR2E31_08 IN02_T18NR2E32_00

CORNER WITNESS DETAIL

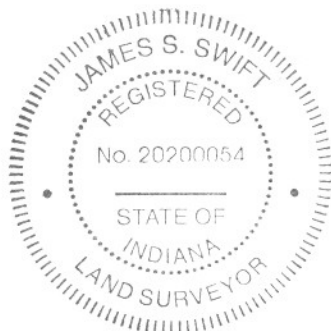
SCALE 1" = 20'
 0' 10' 20'



- A - Boone County witness mark, flush, 21.56'
- B - Boone County witness mark, flush 29.15'
- C - Mag nail found driven through plastic rebar cap, W. side post, 1.1' a.g., 19.39'
- D - Boone County witness mark, flush 44.29'
- E - 5/8 inch rebar bearing cap 'Dodge', found at east edge base of wood corner post, 17.29'

Boone County witness mark is a 3/8" diameter x 2' long rebar bearing a metal cap stamped "Boone County Witness Point."

The Harrison monument was set in place of a 5/8 inch rebar found and accepted as marking the corner. A previous BCS record dated August 19, 1903 states "Established corner by intersecting lines. Set rock 18x12x12 +. Cedar post 12x12 N8°W 19 links." A 3 foot wide (N-S) by 12 foot long (E-W) hole was excavated to the clay sub-base. The hole was centered N-S on the existing fence end posts on the east and west sides of the road and extended from the west edge of the pavement to across the physical centerline. The stone was not found in this area of excavation. The found 5/8 inch rebar was near the west edge of the road, approximately 0.1 below grade and visible within a small hole. Another rebar, bearing the cap "Witness point" was found 1 foot east of the visible rebar. Recent recorded surveys have held the visible, non-capped rebar. The Harrison monument was set in place of this rebar. Both rebars were removed during excavation. This corner was originally established in July, 1821.



Kenneth E. Hedge
 Kenneth E. Hedge, County Surveyor

James S. Swift
 James S. Swift, IN LS 20200054
 January 30, 2008

Worth Township

Eagle Township

Section 30 T18N, R2E	Section 29 T18N, R2E
Section 31 T18N, R2E	Section 32 T18N, R2E

SECTION CORNER RECORD

SE 500-750

BOONE COUNTY SURVEYOR'S OFFICE

State Plane grid coordinates NAD83 (NSRS 2007):

North: 1720112.7 East: 3164738.4 (U.S. survey feet)

Type of monument: Wood corner post with mag nail set in S. edge

Depth: Mag nail on post is at 5 inches above ground.

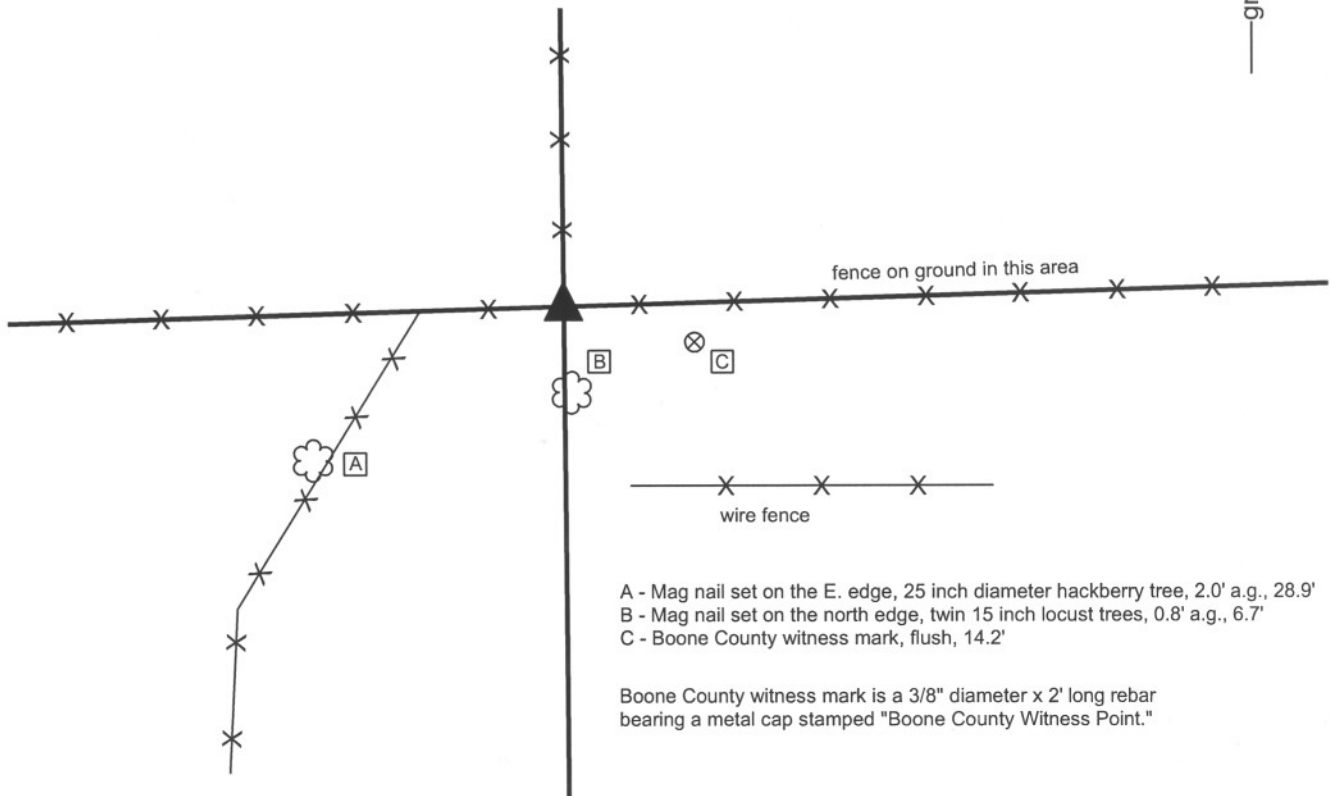
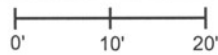
Indiana tie card references:

IN02_T18NR2E29_76

IN02_T18NR2E32_04

CORNER WITNESS DETAIL

SCALE 1" = 20'



- A - Mag nail set on the E. edge, 25 inch diameter hackberry tree, 2.0' a.g., 28.9'
- B - Mag nail set on the north edge, twin 15 inch locust trees, 0.8' a.g., 6.7'
- C - Boone County witness mark, flush, 14.2'

Boone County witness mark is a 3/8" diameter x 2' long rebar bearing a metal cap stamped "Boone County Witness Point."

The wood post was found in place.

A BCS record of August 19, 1902 mentions this corner several times. The record does not describe what object was set or found at the corner, but shows measurements from this corner to several other corners to the east, west and south. The measurements reported on this record indicate that the corner was half-way between the section corners to the west and east, presumably on the same line, though not specifically documented as such. No recent BCS tie cards were found for this corner. An old wood post at the intersection of fences to the north, east and west exists at a point very close to the midpoint of the line connecting the section corners to the east and west. No stones which had the characteristics of section corner stones were found around the wood post. The post was held as the best available evidence of the corner. As the fences attached to the post are still standing, the post was left in place. A mag nail with a washer stamped "Boone County Surveyor" was set on the south side of the post. As the post leans slightly to the north, this nail is positioned roughlyly over the base of the post in the ground. The coordinates shown above represent the position of the mag nail. This corner was originally established as a wood post in July, 1821.



Kenneth E. Hedge
Kenneth E. Hedge, County Surveyor

James S. Swift
James S. Swift, IN LS 20200054
July 14, 2010

Worth Twp

Section 29
T18N, R2E

Eagle Twp

Section 32
T18N, R2E

SECTION CORNER RECORD

SE 500-800

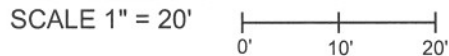
BOONE COUNTY SURVEYOR'S OFFICE

State Plane grid coordinates NAD83 (NSRS 2007):
 North: 1720188.49 East: 3167398.38 (U.S. survey feet)

Type of monument: Harrison, 4" disk 'Section Corner'
 Depth: 0.1' below adjacent road surface

Indiana tie card references:
 IN02_T18NR2E28_72 IN02_T18NR2E29_80
 IN02_T18NR2E32_08 IN02_T18NR2E33_00

CORNER WITNESS DETAIL

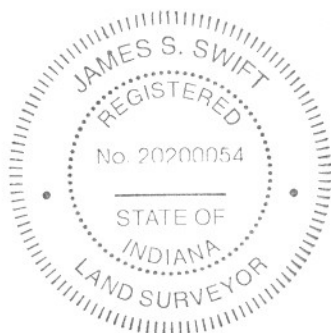
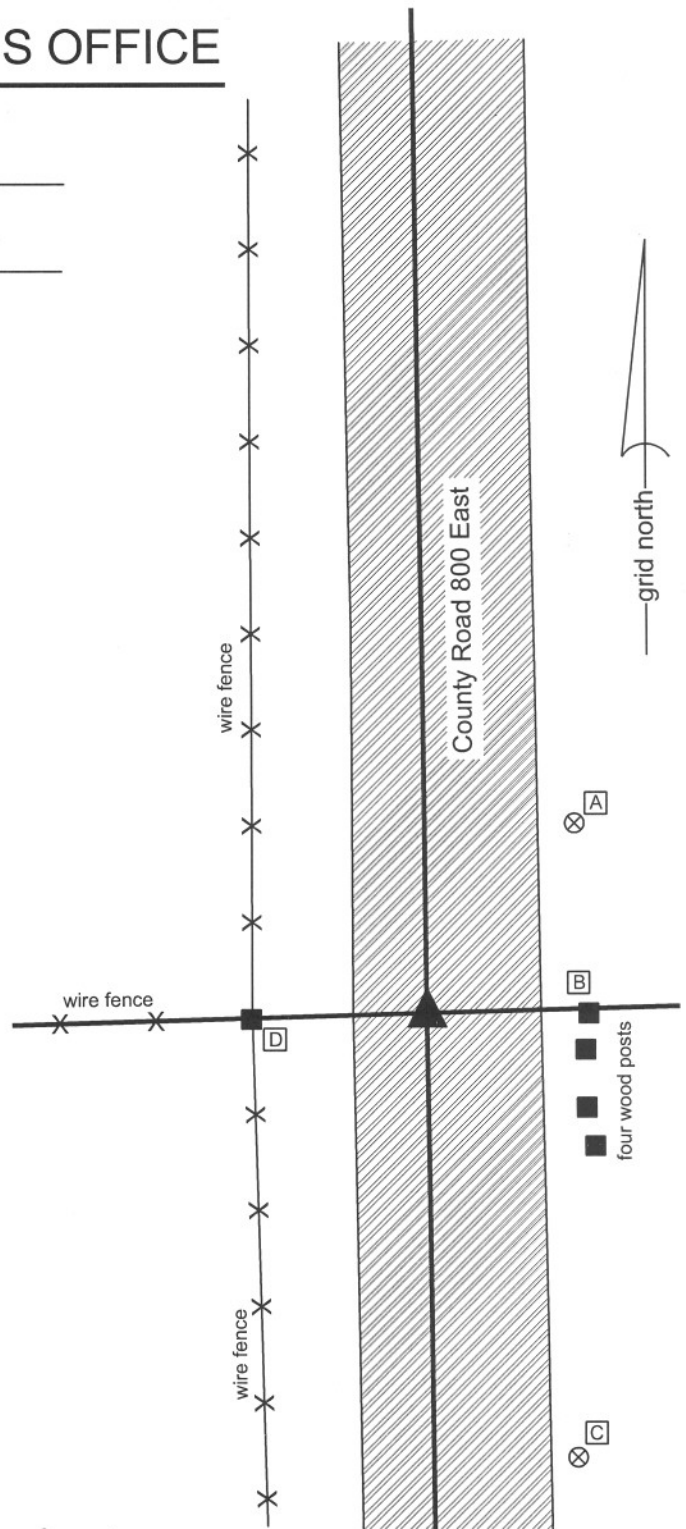


- A - Boone County witness mark, flush, 25.02'
- B - Mag nail found in N. side post, 0.5' a.g., 17.00'
- C - Boone County witness mark, flush 48.85'
- D - Mag nail found in S.E. side post, 1.3' a.g., 18.09'

Boone County witness mark is a 3/8" diameter x 2' long rebar bearing a metal cap stamped "Boone County Witness Point."

The Harrison monument was set in place of a stone found and accepted as marking the corner. The stone was slightly west of the center of the physical roadway of County Road 800 East, though close to the midpoint between the end posts on each side of the road. The position of the stone also fits well, in the east-west dimension, with the extended physical center of the roadway to the south and is at the easterly prlongation of an old fence to the west. The stone is 11 inches by 6 inches at its widest point and 12 inches tall. The stone was found to be standing vertically, fully lodged in the clay sub-base of the road, with the top of the stone at 5 inches below the existing surface of the road. No previous record of this stone is on file with this office.

A previous BCS tie card, undated though likely from 1968, states "no stone found." A piece of railroad rail found 1.8' E and 0.3' N of the top center of the stone was likely set as part of the field work associated with the creation of that tie card. The rail is closer to the physical center of the roadway than the stone, but does not fit as well with other evidence, including the extended physical roadway or the posts on each side. The stone is considered to be better evidence of the location of the original corner than the rail. The rail may represent a previous interpretation of the corner by the Office of the County Surveyor, though it is not specifically documented as such, and has been held by previous surveys as marking the corner. The 1967 tie card is considered erroneous, given the fact that the exclusive documentation on the tie card states "no stone found" while clearly a stone was present. It is noted that this corner is on the slope of a short, steep hill, through which the road drifts slightly to the east of the longer roadway. It is believed that the 1967 crew probably looked exclusively in the physical center of the roadway at the easterly prolongation of the old fence and did not search beyond that specific point. The rail was removed during excavation. Due to its shallow depth, the stone was also removed and the Harrison monument was set in place of the stone.



Kenneth E. Hedge
 Kenneth E. Hedge, County Surveyor

J. S. Swift
 James S. Swift, IN LS 20200054
 January 30, 2008

Eagle & Worth Townships

Section 29 T18N, R2E (Worth)	Section 28 T18N, R2E (Eagle)
Section 32 T18N, R2E (Eagle)	Section 33 T18N, R2E (Eagle)

PHOTOGRAPHIC DOCUMENTATION

Date of photography: 11/14/2007

View from east, looking west. The stone is exposed to bottom. Most of the stone was embedded in the clay sub-base layer below the gravel road. Main square hole is 4 feet by 4 feet centered on the railroad rail. Stone found at west edge of main hole. Note wood end post to west.



View from above and south of stone as exposed. The top of the stone is 5 inches below the surface of the road.



View from above and slightly south of west. Clay sub-base has been excavated from around the stone almost to the bottom of the stone.



View from above and west. Hole and indentation in the clay sub-base after the stone was removed. Harrison monument was set in the position of the midpoint of the top of the stone.



SECTION CORNER RECORD

SE 550-700

BOONE COUNTY SURVEYOR'S OFFICE

State Plane grid coordinates NAD83 (NSRS 2007):

North: 1717395.50 East: 3162083.98 (U.S. survey feet)

Type of monument: Harrison, 4" disk 'Section Corner'

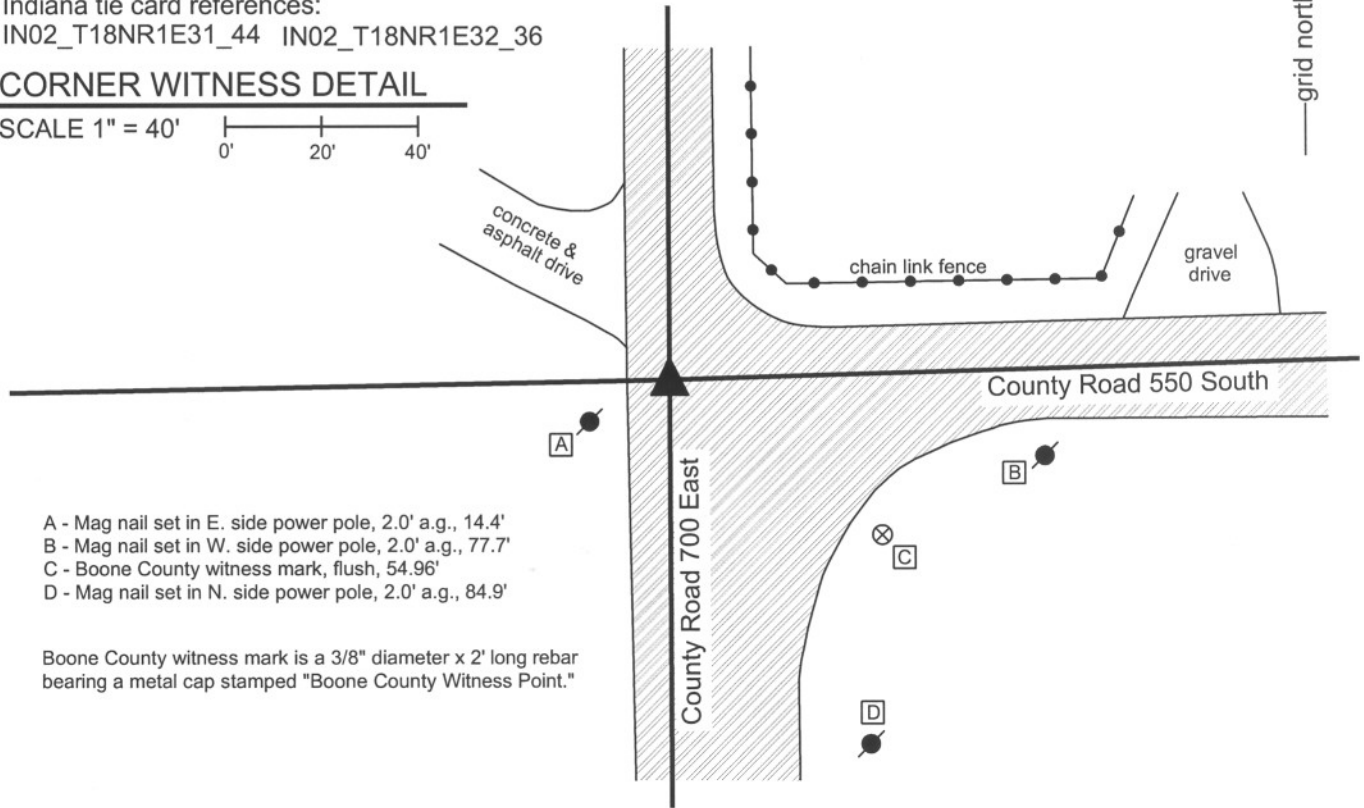
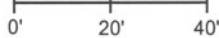
Depth: One inch below adjacent road surface

Indiana tie card references:

IN02_T18NR1E31_44 IN02_T18NR1E32_36

CORNER WITNESS DETAIL

SCALE 1" = 40'



- A - Mag nail set in E. side power pole, 2.0' a.g., 14.4'
- B - Mag nail set in W. side power pole, 2.0' a.g., 77.7'
- C - Boone County witness mark, flush, 54.96'
- D - Mag nail set in N. side power pole, 2.0' a.g., 84.9'

Boone County witness mark is a 3/8" diameter x 2' long rebar bearing a metal cap stamped "Boone County Witness Point."

The harrison monument was set over a stone found.

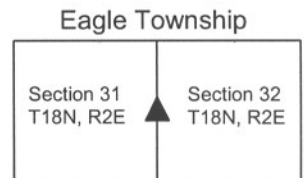
This corner is not specifically identified as being marked by a stone in the BCS Surveyor's Record. It is referenced as the terminal point for measurements in 1834, 1842 and 1903. A BCS tie card of May 19, 1994 shows conflicting information about the corner. The tie card calls a 5/8 inch rebar as marking the corner but also shows that the east-west section line is 4.1 feet north of the rebar. This corner was excavated on December 12, 2008. Prior to excavation, two mag nails were visible in the intersection, 4 feet apart in the N-S dimension. The south mag nail fit approximately with the ties shown on the 1994 tie card. The north mag appeared to fit with the tie card reference of the section line being 4.1 feet north of the corner. It is noted that the north mag nail fit better with the local evidence in the form of the center of County Road 550 South, bearing east from this corner. Both mag nails were removed during excavation. A 5/8 inch rebar was found at 0.2 foot below the surface of the road, approximately below the south Mag nail, being 0.14 foot west and 0.1 foot out of the nail. A railroad spike was found at approximately 1.5 foot deep, in the vicinity of the north mag nail. A stone was found below the railroad spike at 2 feet deep. The top 6 inches of the stone were exposed at which point it measures 12 inches N-S by 8 inches E-W. The stone was fully embedded in the clay, with the top 2 inches of the stone protruding into the base material at the bottom of the road. The stone clearly fits better with the center of County Road 500 South than the rebar did and fits with the reference of the tie card showing the section line being 4.1 feet north of the rebar. The harrison monument was set over the top, center of the stone, which point is 0.2 foot north and 0.35 foot east of the north mag nail and 4.2 feet north and 0.35 foot east of the south mag nail.

This corner was originally established as a wood post in July 1821.



Kenneth E. Hedge
 Kenneth E. Hedge, County Surveyor

James S. Swift
 James S. Swift, IN LS 20200054
 July 14, 2010



SECTION CORNER RECORD

SE 550-800

BOONE COUNTY SURVEYOR'S OFFICE

State Plane grid coordinates NAD83 (NSRS 2007):

North: 1717551.84 East: 3167430.83 (U.S. survey feet)

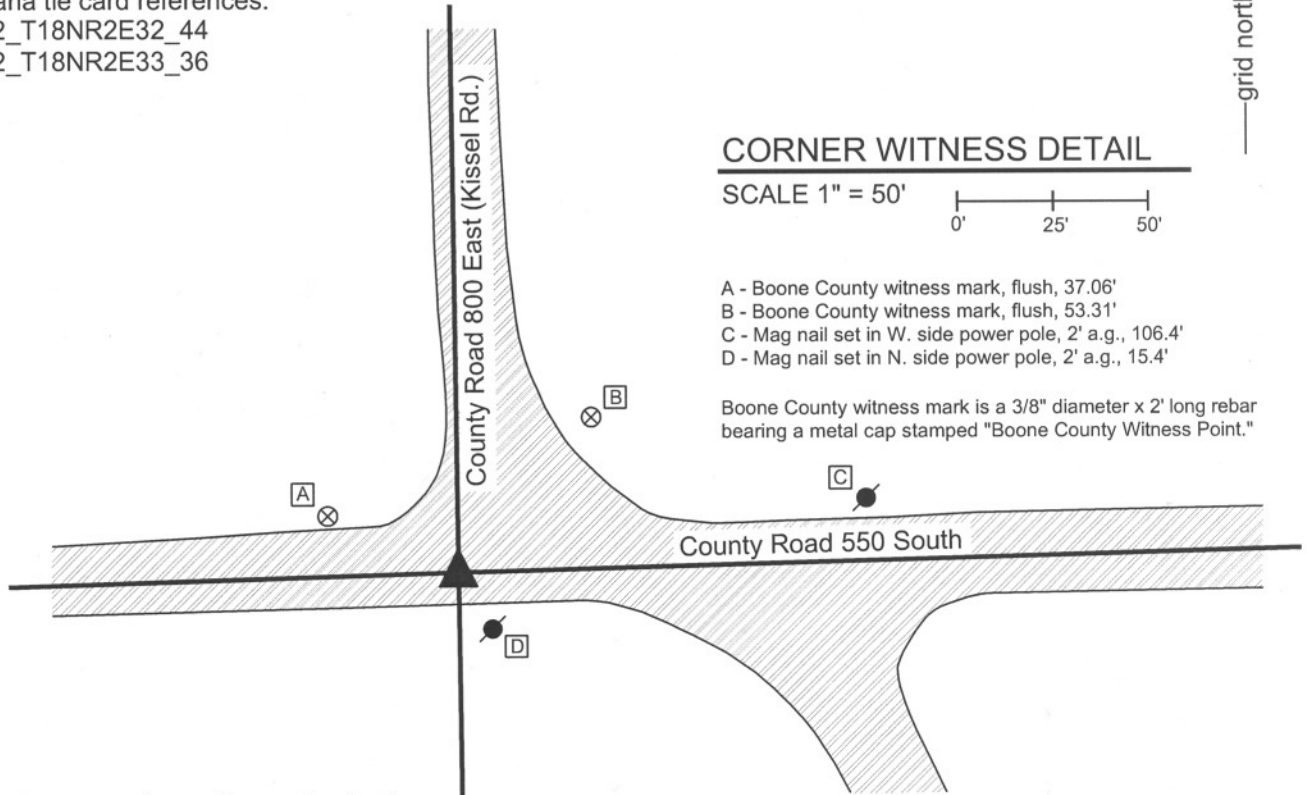
Type of monument: Harrison, 4" disk 'Section Corner'

Depth: One inch below adjacent road surface

Indiana tie card references:

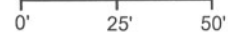
IN02_T18NR2E32_44

IN02_T18NR2E33_36



CORNER WITNESS DETAIL

SCALE 1" = 50'

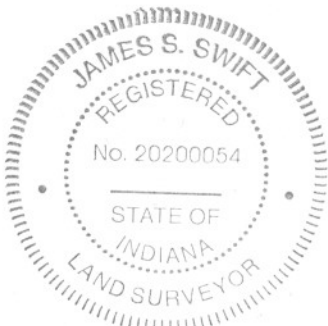


- A - Boone County witness mark, flush, 37.06'
- B - Boone County witness mark, flush, 53.31'
- C - Mag nail set in W. side power pole, 2' a.g., 106.4'
- D - Mag nail set in N. side power pole, 2' a.g., 15.4'

Boone County witness mark is a 3/8" diameter x 2' long rebar bearing a metal cap stamped "Boone County Witness Point."

The harrison monument was set over a stone found.

This corner is not specifically identified as being marked by a stone in the old BCS stone records. It is referenced on several measurement records within the stone record, including references from 1834, 1836 and 1903. No BCS tie cards were found for this corner. No monuments were visible at the surface or easily detected at this intersection prior to fall, 2008. Numerous small holes were visible in the intersection which appear to be previous efforts by surveying field crews to locate a physical monument. It is noted that the asphalt must contain traces of ferrous metal, as numerous readings can be detected with a magnetic locator. The position of a PK nail shown as the corner on some private surveys was calculated with respect to other common monuments and the PK nail was found at 3 inches below the surface of the road. The source of the PK nail is not known and preliminary reconnaissance and analysis indicated that this monument was likely further east than the actual corner. This corner was excavated on December 12, 2008. Excavation revealed a stone at 14 inches deep, 5.3 feet west and 1.1 feet south of the PK nail. The top 8 inches of the stone were exposed at which point it remained stable in the clay, and measured 14 inches N-S by 16 inches E-W. The stone fits well with several forms of evidence for this corner. While it appears to be slightly west of the physical intersection of Kissel Road and County Road 550 South, it fits well with the southerly prolongation of Kissel Road from the north and fits with a pattern of stones found along this road to the north being slightly west of the physical center. Kissel Road is offset at this intersection, as shown above, and it is observed that the road bears slightly to the east as it comes into the intersection from the north, in apparent preparation for the transition to the portion of road bearing south from the intersection, well to the east. The stone is within one foot of the north-south line connecting the stone found at the northeast corner of section 32 with the calculated southeast corner of section 32. The harrison monument was set directly over the top, center of the stone. This corner was originally established as a wood post in July, 1821.

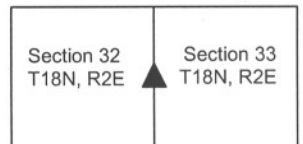


Kenneth E. Hedge
 Kenneth E. Hedge, County Surveyor

James S. Swift
 James S. Swift, IN LS 20200054

March 11, 2009

Eagle Township



PHOTOGRAPHIC DOCUMENTATION

Date of photography: December 17, 2008 and March 2, 2009

Corner stone.
View of east side of stone as intially exposed.



Corner stone. View from above.



View from standing upon the harrison monument / stone, looking north along County Road 800 East (Kissel Road).



View from standing upon the harrison monument / stone, looking east along County Road 550 South.



For details and documentation, refer to related sheet "Section Corner Record."

SECTION CORNER RECORD

SE 600-700

BOONE COUNTY SURVEYOR'S OFFICE

State Plane grid coordinates NAD83 (NSRS 2007):

Corner 1: North: 1714752.63 East: 3162095.24 (U.S. survey feet)

Corner 2: North: 1714760.44 East: 3162364.69 (U.S. survey feet)

Type of monument: Harrison, 4" disk 'Section Corner'

Depth: One inch deep (corner 1), three inches deep (corner 2)

Indiana tie card references:

IN02_T17NR2E05_00 IN02_T17NR2E06_08

IN02_T18NR2E31_80 IN02_T18NR2E32_72

- ① S.E. Corner, Section 31
S.W. Corner, Section 32
T 18 N, R 2 E
- ② N.W. Corner, Section 5
N.E. Corner, Section 6
T 17 N, R 2 E



CORNER WITNESS DETAIL

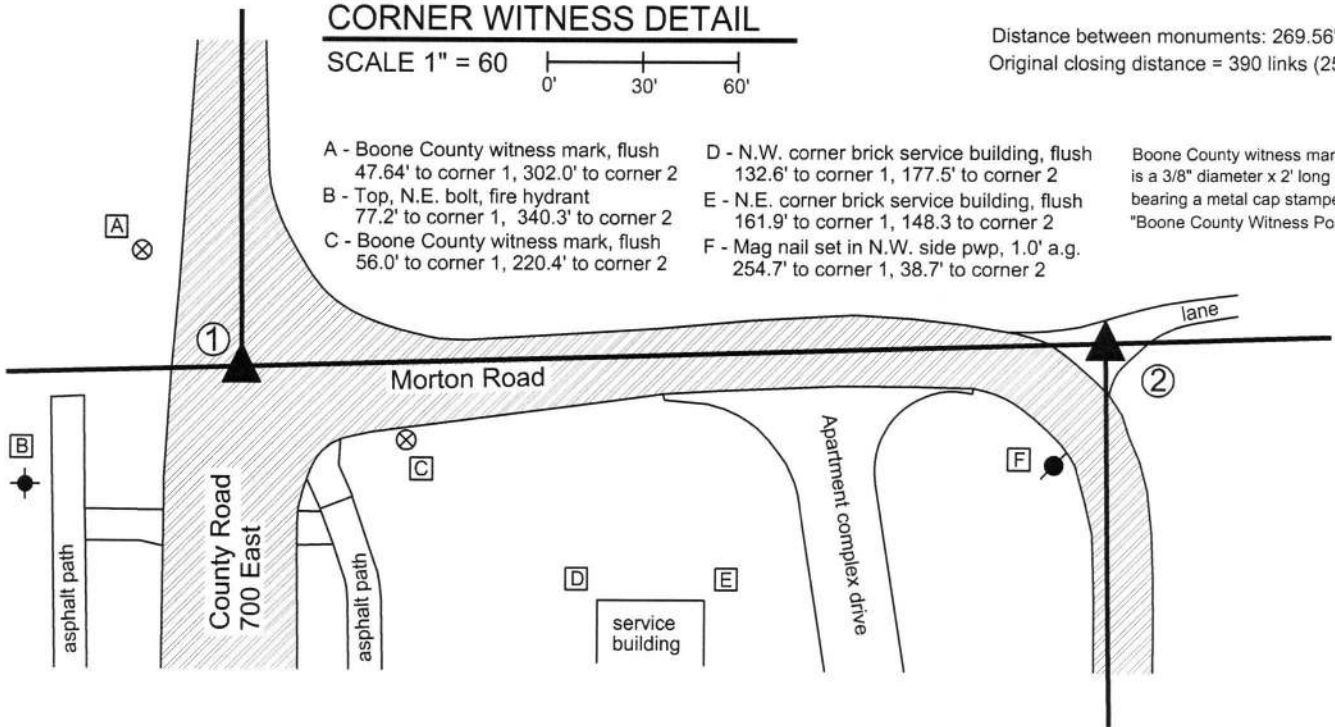
SCALE 1" = 60'

Distance between monuments: 269.56'
Original closing distance = 390 links (257.4')

- A - Boone County witness mark, flush
47.64' to corner 1, 302.0' to corner 2
- B - Top, N.E. bolt, fire hydrant
77.2' to corner 1, 340.3' to corner 2
- C - Boone County witness mark, flush
56.0' to corner 1, 220.4' to corner 2

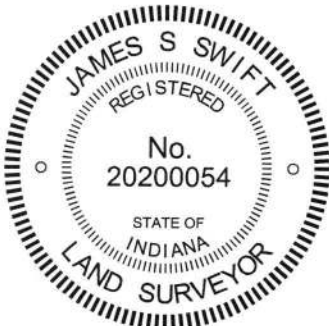
- D - N.W. corner brick service building, flush
132.6' to corner 1, 177.5' to corner 2
- E - N.E. corner brick service building, flush
161.9' to corner 1, 148.3' to corner 2
- F - Mag nail set in N.W. side pwp, 1.0' a.g.
254.7' to corner 1, 38.7' to corner 2

Boone County witness mark is a 3/8" diameter x 2' long rebar bearing a metal cap stamped "Boone County Witness Point."



The Harrison monument at Corner 1 was set in a calculated position in the same position as a rebar which formerly marked the corner. A BCS tie card dated May 19, 1994 shows the corner as a 5/8 inch rebar. Numerous surveys have held this monument as the corner, including a survey by American Consulting, Inc. recorded in Survey Book 7, pages 21-22 in the Boone County Recorder's Office. It is believed that the rebar was removed during road construction in 2006. The position of the rebar was computed with respect to the relative locations of other monuments shown on the above referenced survey and other surveys by American Consulting, Inc. and American Structurepoint, Inc. (same company, different names.) A Harrison Monument was set at the calculated position in 2009.

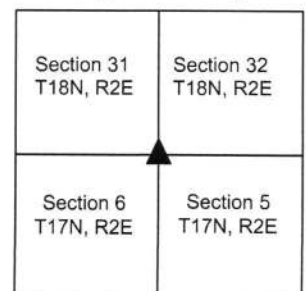
A monument called on many surveys to be a rebar with a yellow cap, but which was actually an iron pipe with a yellow survey cap (markings illegible), has long been held as marking Corner 2. The area around the pipe was excavated on September 9, 2013. Excavation of an area extending 3 feet north, 3 feet south, 2.5 feet east and 2.5 feet west of the iron pipe yielded remnants of a wood stake approximately one foot south of the pipe. No other credible evidence of the corner was found during excavation. The iron pipe (called rebar on surveys) was held to define the east-west position of the corner. The north-south position of the pipe was not held, as the monument falls slightly south of the township line connecting Corner 1 with the standard corner approximately 1/2 mile to the east. The corner was established along the range line and a Harrison monument was set at this position, 0.4 foot north of the original position of the iron pipe with cap.



Kenneth E. Hedge
Kenneth E. Hedge, County Surveyor

James S. Swift
James S. Swift, IN LS 20200054
March 23, 2017

Eagle Township



SECTION CORNER RECORD

SE 600-750

BOONE COUNTY SURVEYOR'S OFFICE

State Plane grid coordinates NAD83 (2011):

Corner 1: North: 1714830.49 East: 3164779.58 (U.S. survey feet)

Corner 2: North: 1714837.82 East: 3165016.04 (U.S. survey feet)

Corner 1: Harrison, 4" disk 'Section Corner', 6" below grade

Corner 2: Harrison, 4" disk 'Section Corner', flush

Indiana tie card references:

IN02_T18NR2E32_76

IN02_T17NR2E05_04

CORNER WITNESS DETAIL

SCALE 1" = 100'

Ties to Corner 1, S 1/4 corner Sec. 32, T18N, R2E

A - Rebar with aluminum cap, intersection of Beekman Place and Beekman Terrace, 177.02'

TIES TO STRUCTURE

6683 BEEKMAN PL, TOWNHOME C

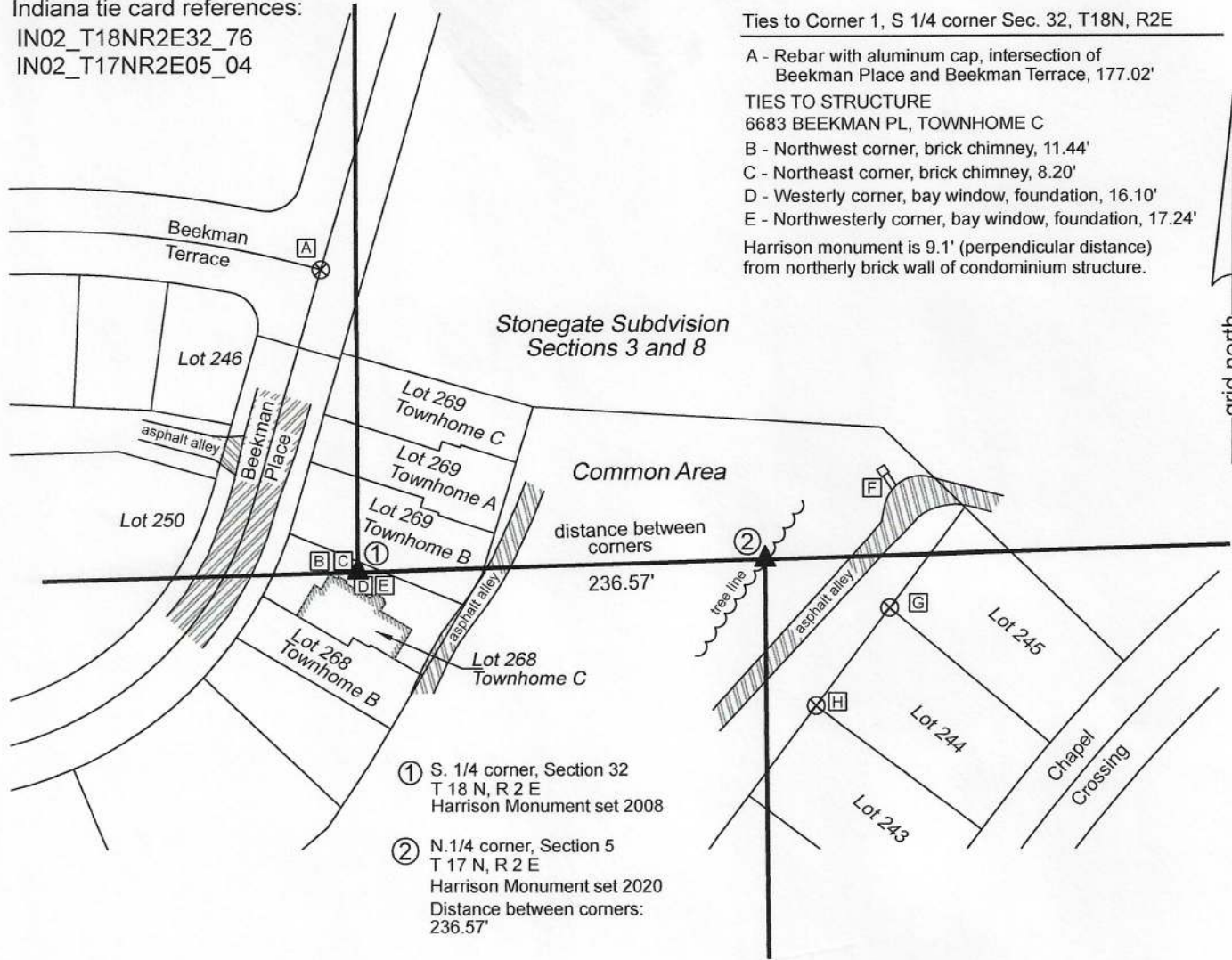
B - Northwest corner, brick chimney, 11.44'

C - Northeast corner, brick chimney, 8.20'

D - Westerly corner, bay window, foundation, 16.10'

E - Northwesterly corner, bay window, foundation, 17.24'

Harrison monument is 9.1' (perpendicular distance) from northerly brick wall of condominium structure.



① S. 1/4 corner, Section 32
T 18 N, R 2 E
Harrison Monument set 2008

② N. 1/4 corner, Section 5
T 17 N, R 2 E
Harrison Monument set 2020
Distance between corners:
236.57'

Ties to corner 2, N 1/4 corner Sec. 5, T17N, R2E

F - south corner, concrete base, community mailbox stand, 82.6'

G - 5/8 inch rebar with B.L.N. cap, flush, 77.5'

H - 5/8 inch rebar with B.L.N. cap, flush, 90.3'



Kenneth E. Hedge
Kenneth E. Hedge, County Surveyor

James S. Swift
James S. Swift, IN LS 20200054

September 2, 2020 (previous @ 9/22/2010)

Page 1 of 2

See page 2 for explanation of findings

Eagle
Township

Section 32
T18N, R2E

Section 05
T17N, R2E

SECTION CORNER RECORD

SE 600-750

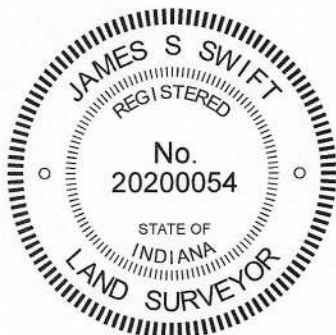
BOONE COUNTY SURVEYOR'S OFFICE

The Harrison monument at Corner 1 was set in place of an old wood corner post.

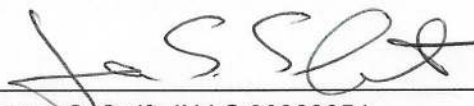
This corner falls within Stonegate Section VIII but is not shown on the plat. The old corner post was still present in the summer of 2007, at the intersection of the old tree lines marking historical evidence of occupation along the section lines to the north, east and west. A 3/4 inch diameter rebar was found at the northeast edge of the post and two stones were visible at the north and northwest edges of the post, respectively. By the summer of 2008 the post had been cut off at ground level and the adjoining lots appeared to be under preparation for construction of the proposed townhomes. The base of the post was removed on September 24, 2008, during which process numerous rocks were found around the post, all of which were accepted as being brace rocks rather than section corner stones. The Harrison monument was set in the position of the center of the base of the post.

In 2008, neither a monument nor physical evidence were found in the immediate vicinity of the closing corner. Several monuments including a rebar with Dodge cap and an iron pipe were known to have been located approximately 236.5' feet east of standard corner prior to disruptions associated with construction of Stonegate subdivision, as shown on an unrecorded survey by Weihe Engineers, Job. No. 9900920, dated 4/24/2002, which represents a preliminary survey to the Stonegate development. The original Stonegate plat (Plat Book 10, page 9, Boone County Recorder) shows a rebar set at Corner 2 and an iron pipe found 1.75 feet south. Additional plats for the same development show a rebar found and pipe 1.8 feet south. Though they had not been found as of 2008, the iron pipe and rebar were both present, approximately 18 inches deep. Evidently, fill material had been placed above them and they did not register on metal detection devices. During recent retracement of property in the vicinity, Professional Surveyor James Foster, LS 2050003, did discover the monuments. Excavation on August 26, 2020, based on the information shared by Mr. Foster, revealed a 5/8 inch rebar and a 1 inch diameter iron pipe found at 18 inches deep. Excavation also revealed a stone found at 24 inches deep. The top of stone measured 6 inches N-S by 8 inches E-W. The total dimensions of the stone were not measured. It is not known whether this represents the same stone as is described in a BCS record of April 5, 1853 which describes the corner as "A Rock that was set." The rebar is at the northeast edge of the stone and the iron pipe is adjacent to, and slightly east of, the rebar. The position of the corner was established along the township line as defined by Corner 1 and the southeast corner of section 32, T18N, R2E (see BCS Corner SE 600-800), 0.6 foot south of the found rebar. A Harrison monument was set at this position on August 26, 2020. This position falls above the east edge of the stone, approximately 0.4 foot east of the evident high point of the stone. The stone, rebar and pipe were all left in the ground, with the tops of all three objects encased in concrete.

The coordinates shown for Corner 1 are updated since the previous 2010 revision of this corner record. Corner 1 was originally established as a wood post in 1819. Corner 2 is not an original federal corner. The average of the township line offsets at the northeast and northwest corners of section 5 is 341.5 links or 225.4 feet. The separation of the monuments as established is 236.57 feet, close to the previously noted offset of 236.50, as discussed above.




Kenneth E. Hedge, County Surveyor


James S. Swift, IN LS 20200054

September 2, 2020 (previous @ 9/22/2010)

Page 2 of 2

See page 1 for sketch

Eagle
Township

Section 32
T18N, R2E

▲
Section 05
T17N, R2E

SECTION CORNER RECORD

SE 600-750

BOONE COUNTY SURVEYOR'S OFFICE

State Plane grid coordinates NAD83 (NSRS 2007):
North: 1714830.48 East: 3164779.54 (U.S. survey feet)

Type of monument: Harrison, 4" disk 'Section Corner'
Depth: six inches below adjoining ground.

Indiana tie card references:
IN02_T17NR2E05_04
IN02_T18NR2E32_76

CORNER WITNESS DETAIL

SCALE 1" = 60'

- A - Rebar with aluminum cap, intersection of Beekman Place and East Stonegate Drive, 395.00'
- B - Rebar with aluminum cap, intersection of Beekman Place and Beekman Terrace, 177.02'

TIES TO STRUCTURE

- 6683 BEEKMAN PL, TOWNHOME C
- C - Northwest corner, brick chimney, 11.44'
- D - Northeast corner, brick chimney, 8.20'
- E - Westerly corner, bay window, foundation, 16.10'
- F - Northwesterly corner, bay window, foundation, 17.24'

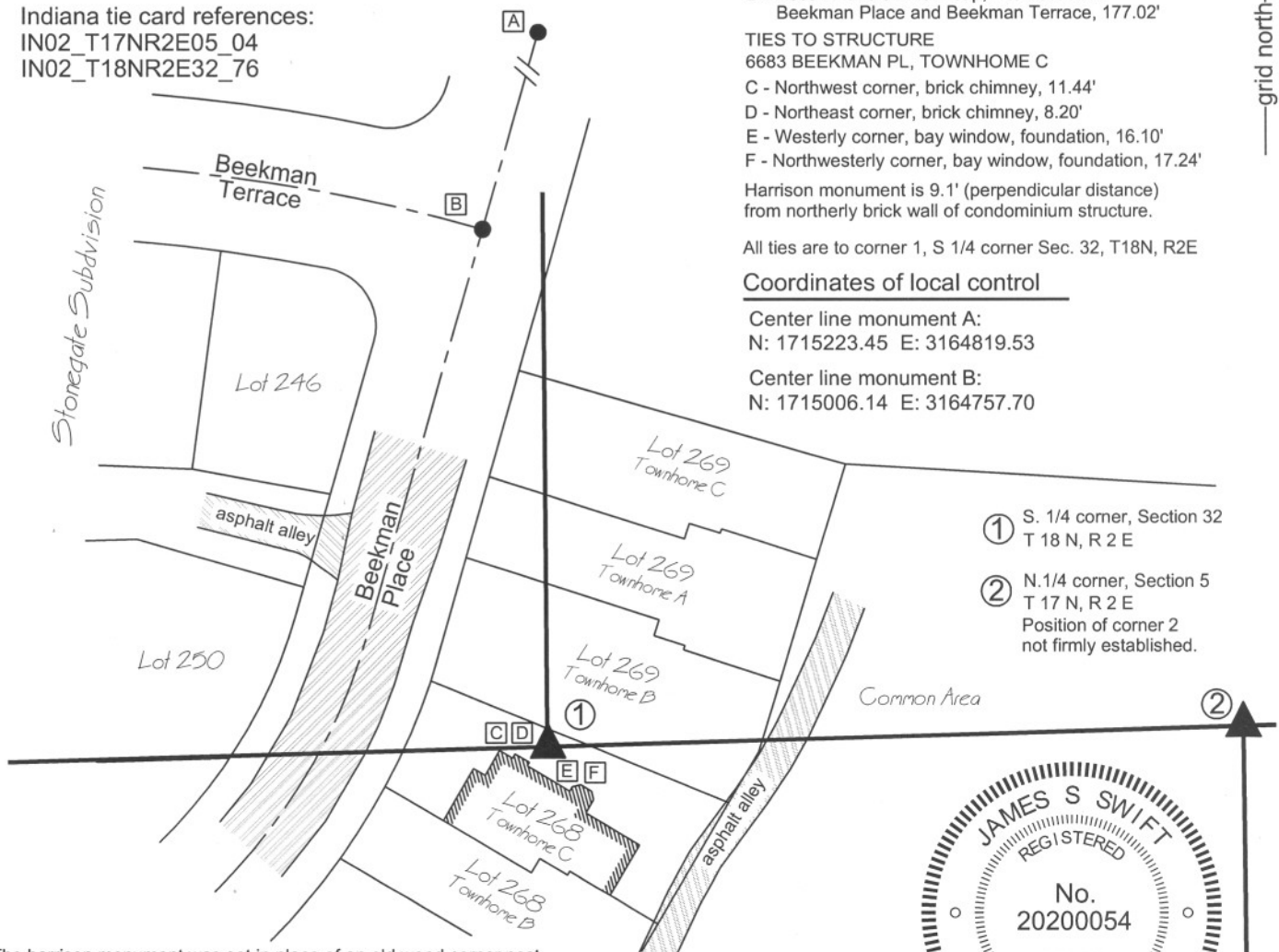
Harrison monument is 9.1' (perpendicular distance) from northerly brick wall of condominium structure.

All ties are to corner 1, S 1/4 corner Sec. 32, T18N, R2E

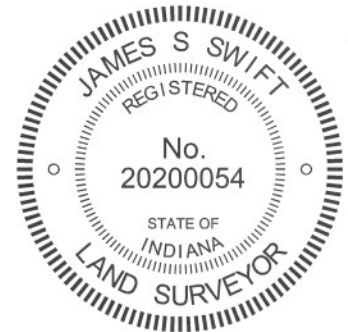
Coordinates of local control

Center line monument A:
N: 1715223.45 E: 3164819.53

Center line monument B:
N: 1715006.14 E: 3164757.70



- ① S. 1/4 corner, Section 32 T 18 N, R 2 E
- ② N. 1/4 corner, Section 5 T 17 N, R 2 E
Position of corner 2 not firmly established.



The harrison monument was set in place of an old wood corner post. This corner falls within Stonegate Section VIII but is not shown on the plat. The old corner post was still present in the summer of 2007, at the intersection of the old tree lines marking historical evidence of occupation along the section lines to the north, east and west. A 3/4 inch diameter rebar was found at the northeast edge of the post and two stones were visible at the north and northwest edges of the post, respectively. By the summer of 2008 the post had been cut off at ground level and the adjoining lots appeared to be under preparation for construction of the proposed townhomes. The base of the post was removed on September 24, 2008, during which process numerous rocks were found around the post, all of which were accepted as being brace rocks rather than section corner stones. The harrison monument was set in the position of the center of the base of the post.

Neither a monument nor physical evidence were found in the immediate vicinity of the closing corner. Several monuments including a rebar with Dodge cap and an iron pipe existed approximately 236.5' feet east of standard corner prior to disruptions associated with construction of Stonegate subdivision, as shown on an unrecorded survey by Weihe Engineers, Job. No. 9900920, dated 4/24/2002, which represents a preliminary survey to the Stonegate development. This closing corner is not an original federal corner and was not firmly established as of the date of certification of this tie card.

Kenneth E. Hedge
Kenneth E. Hedge, County Surveyor

Eagle Township

James S. Swift
James S. Swift, IN LS 20200054

March 11, 2009
Updated to show structure September 22, 2010

Section 32
T18N, R2E

Section 05
T17N, R2E



SECTION CORNER RECORD

SE 600-800

BOONE COUNTY SURVEYOR'S OFFICE

State Plane grid coordinates NAD83 (NSRS 2007):

Corner 1: North: 1714913.62 East: 3167460.82 (U.S. survey feet)
 Corner 2: North: 1714919.27 East: 3167654.12 (U.S. survey feet)

Corner 1:

Type of monument: Calculated position, no monument set.

Corner 2:

Type of monument: Harrison, 4" disk 'Section Corner'

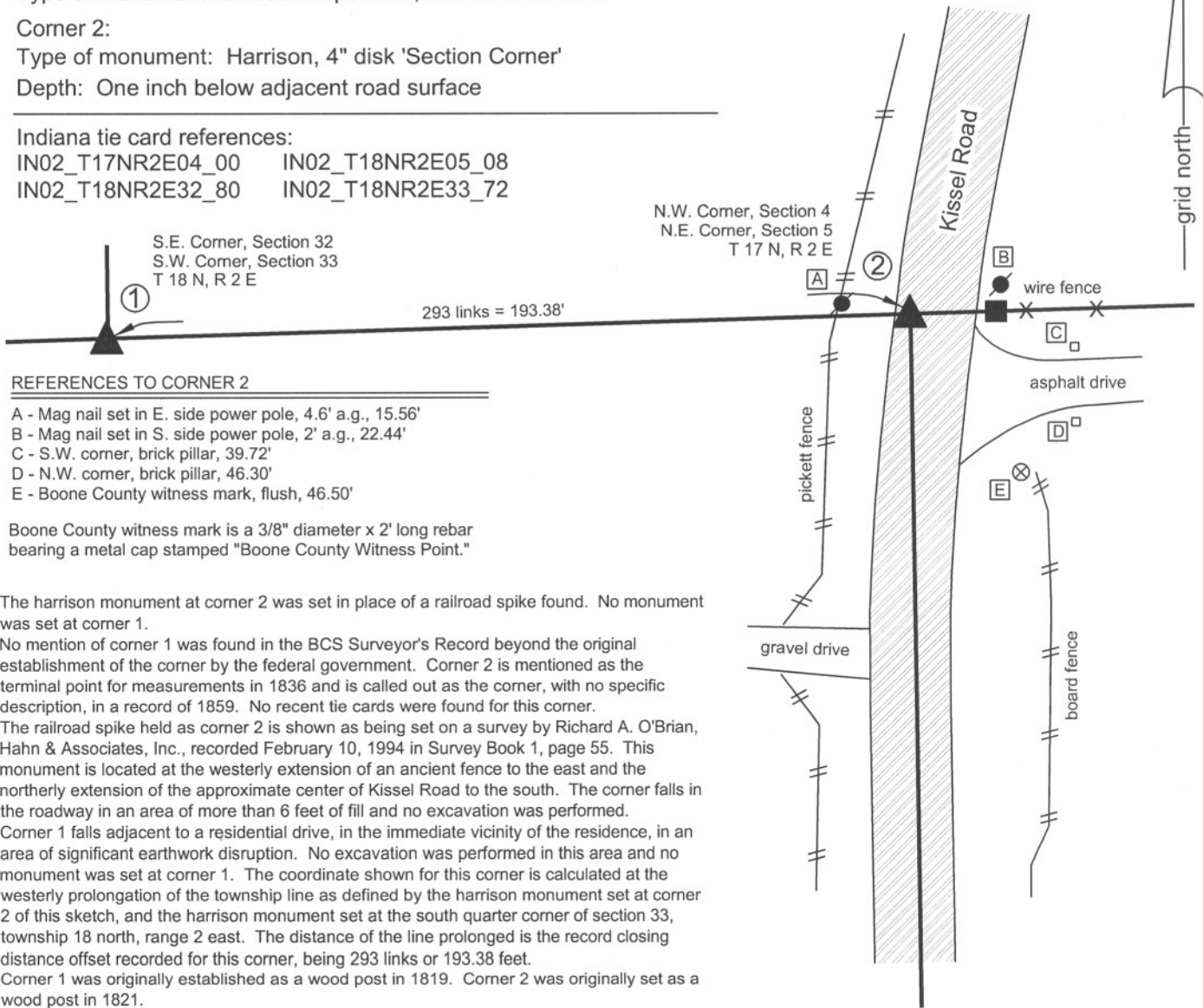
Depth: One inch below adjacent road surface

Indiana tie card references:

IN02_T17NR2E04_00 IN02_T18NR2E05_08
 IN02_T18NR2E32_80 IN02_T18NR2E33_72

CORNER WITNESS DETAIL

SCALE 1" = 40'



REFERENCES TO CORNER 2

- A - Mag nail set in E. side power pole, 4.6' a.g., 15.56'
- B - Mag nail set in S. side power pole, 2' a.g., 22.44'
- C - S.W. corner, brick pillar, 39.72'
- D - N.W. corner, brick pillar, 46.30'
- E - Boone County witness mark, flush, 46.50'

Boone County witness mark is a 3/8" diameter x 2' long rebar bearing a metal cap stamped "Boone County Witness Point."

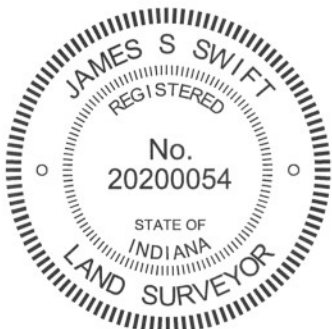
The harrison monument at corner 2 was set in place of a railroad spike found. No monument was set at corner 1.

No mention of corner 1 was found in the BCS Surveyor's Record beyond the original establishment of the corner by the federal government. Corner 2 is mentioned as the terminal point for measurements in 1836 and is called out as the corner, with no specific description, in a record of 1859. No recent tie cards were found for this corner.

The railroad spike held as corner 2 is shown as being set on a survey by Richard A. O'Brian, Hahn & Associates, Inc., recorded February 10, 1994 in Survey Book 1, page 55. This monument is located at the westerly extension of an ancient fence to the east and the northerly extension of the approximate center of Kissel Road to the south. The corner falls in the roadway in an area of more than 6 feet of fill and no excavation was performed.

Corner 1 falls adjacent to a residential drive, in the immediate vicinity of the residence, in an area of significant earthwork disruption. No excavation was performed in this area and no monument was set at corner 1. The coordinate shown for this corner is calculated at the westerly prolongation of the township line as defined by the harrison monument set at corner 2 of this sketch, and the harrison monument set at the south quarter corner of section 33, township 18 north, range 2 east. The distance of the line prolonged is the record closing distance offset recorded for this corner, being 293 links or 193.38 feet.

Corner 1 was originally established as a wood post in 1819. Corner 2 was originally set as a wood post in 1821.



Kenneth E. Hedge
 Kenneth E. Hedge, County Surveyor

James S. Swift
 James S. Swift, IN LS 20200054
 March 1, 2012

Eagle Township

Section 32 T18N, R2E	Section 33 T18N, R2E
Section 5 T17N, R2E	Section 4 T17N, R2E