

SECTION CORNER RECORD

SW 550-500

BOONE COUNTY SURVEYOR'S OFFICE

State Plane grid coordinates NAD83 (2011):

North: 1716306.60 East: 3098413.26 (U.S. survey feet)

Type of monument: Harrison, 4" disk 'Section Corner'

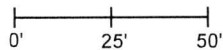
Depth: One inch below adjacent road surface

Indiana tie card references:

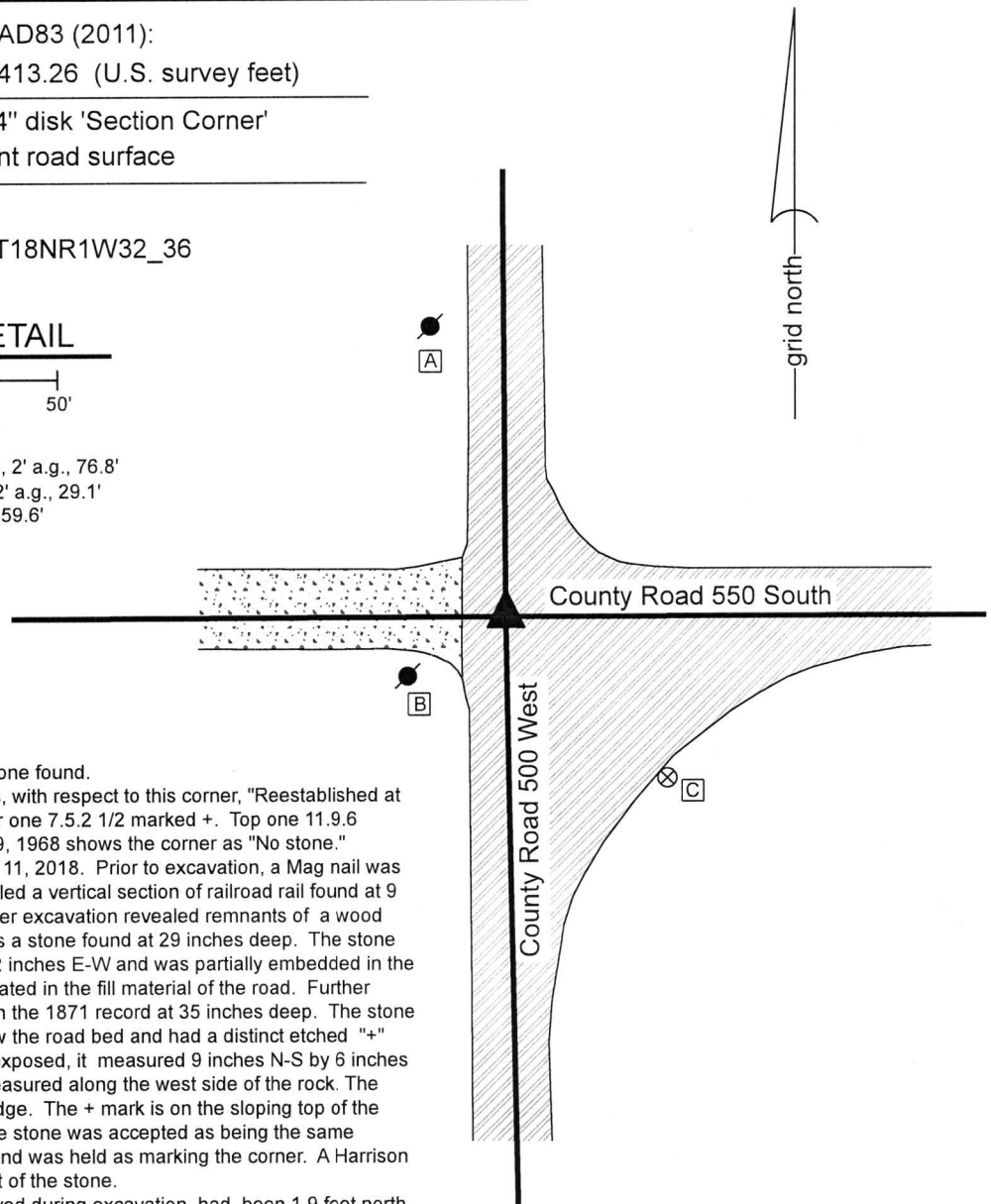
IN02_T18NR1W31_44 IN02_T18NR1W32_36

CORNER WITNESS DETAIL

SCALE 1" = 50'



- A - Mag nail set in S.E. side power pole, 2' a.g., 76.8'
- B - Mag nail set in N. side power pole, 2' a.g., 29.1'
- C - Boone County Witness Mark, flush, 59.6'

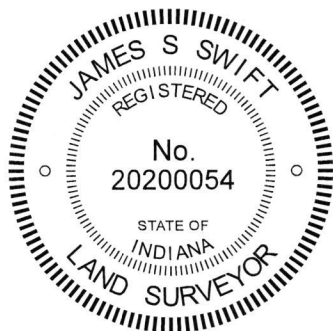


The Harrison monument was set over a stone found.

A BCS record of February 24, 1871 states, with respect to this corner, "Reestablished at intersection of lines. Set two rocks. Under one 7.5.2 1/2 marked +. Top one 11.9.6 marked +." A BCS tie card dated August 9, 1968 shows the corner as "No stone." This corner was excavated on September 11, 2018. Prior to excavation, a Mag nail was found at 2 inches deep. Excavation revealed a vertical section of railroad rail found at 9 inches deep, directly below the nail. Further excavation revealed remnants of a wood stake found at 19 inches, below which was a stone found at 29 inches deep. The stone was 9 inches tall by 7 inches N-S by 3 1/2 inches E-W and was partially embedded in the clay layer below the road and partially situated in the fill material of the road. Further excavation revealed the stone described in the 1871 record at 35 inches deep. The stone was fully embedded in the clay layer below the road bed and had a distinct etched "+" mark. With the top 6 inches of the stone exposed, it measured 9 inches N-S by 6 inches E-W. The full height of 11 inches was measured along the west side of the rock. The highest point of the stone is at the north edge. The + mark is on the sloping top of the stone, slightly south of the high point. The stone was accepted as being the same monument described in the 1871 record and was held as marking the corner. A Harrison monument was set over the top, high point of the stone.

The Mag nail and railroad rail, both removed during excavation, had been 1.9 feet north and 0.5 foot east of the high point of the stone. Though the 1968 tie card does not mention the rail, it is considered most likely that the rail was set in association with the creation of that document. Clearly the statement of "No stone" is erroneous. The wood stake and the non-record stone, both removed during excavation, had been 2.6 feet north and 2.1 feet east of the high point of the record stone.

This corner was originally established as a wood post in 1820.



Kenneth E. Hedge
 Kenneth E. Hedge, County Surveyor

James S. Swift
 James S. Swift, IN LS 20200054
 September 19, 2018 (revised March 6, 2019)

Jackson Township

