

SECTION CORNER RECORD

NE 650-600

BOONE COUNTY SURVEYOR'S OFFICE

State Plane grid coordinates NAD83 (2011):

Corner 1: North: 1780476.53 East: 3155942.15 (U.S. survey feet)

Corner 2: North: 1780549.36 East: 3155941.53 (U.S. survey feet)

Corner 1: Harrison, 4" disk 'Section Corner', 2 inches above ground

Corner 2: Harrison, 4" disk 'Section Corner', 4 inches above ground

Indiana tie card references:

IN02_T20NR1E36_44 IN02_T20NR2E31_36

CORNER WITNESS DETAIL

SCALE 1" = 40'

The Harrison monument at Corner 2 was set in place of a stone found. The Harrison monument at Corner 1 was set on the range line as defined by Corner 2 and the northeast corner of Section 36 (see BCS Corner NE 700-600 STD) adjacent to an ancient wood corner post.

Both corners contain similar references in the BCS Surveyor's Record. An entry of October 25, 1865 states, with respect to Corner 2, "Established 107 links North of Qtr. Sect. Cor. for Sect 36. Set Stake." An entry with no specific date, but which appears to have been recorded after 1882, states, with respect to Corner 1, "Reestablished, Oak stake 107 South of "H" in sec. 31, Twp. 20 N, Range 2 East. Found from witness stump..." The referenced distance of 107 links represents half the closing distance reported in the federal notes for the northwest corner of Section 31.

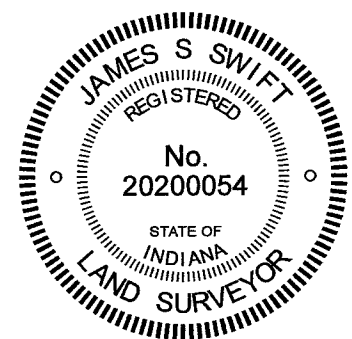
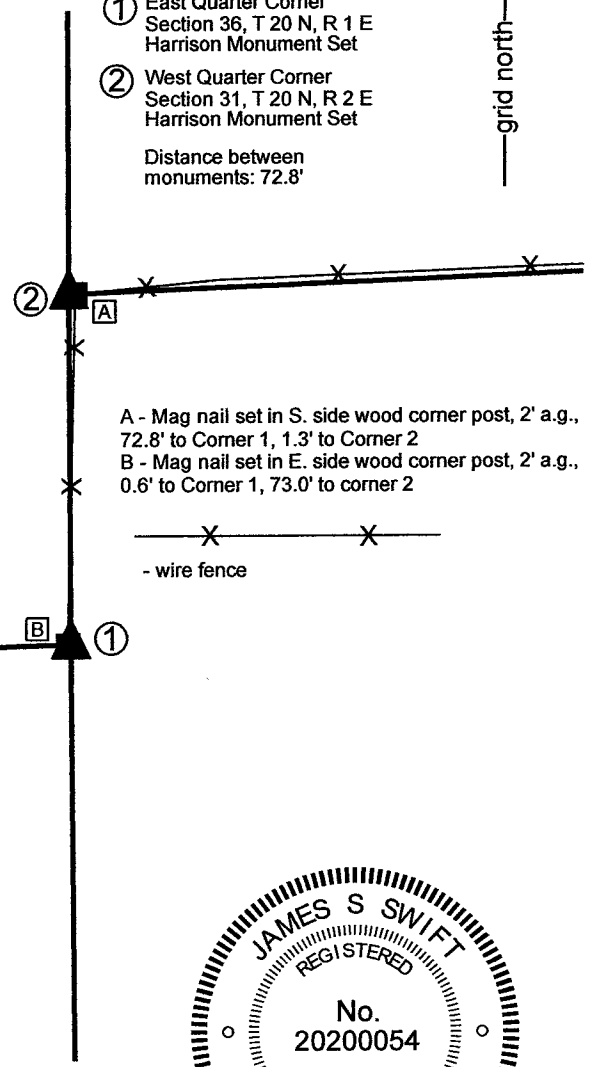
These corners have been investigated several times over several years. Wood corner posts which provide evidence of each corner were found, the southerly post has fence to the north and west attached to it, the northerly post has fence to the east and south. The posts are approximately 2.5 feet further apart than the called-for separation of 107 links. The posts also do not line up well in the east-west dimension. Reconnaissance and positioning of accessory evidence of fence and posts to the west of Corner 1 and east of Corner 2 did not solve the mystery of why the posts are further apart than 107 link distance nor did it make evident which of the posts may represent the most reliable evidence of the corner. A stone found at the southwest corner of the post providing evidence of Corner 2 represented the only non-post monument found. The stone measured 13 inches E-W by 6 inches N-S by 6 inches tall, with a distinct high spot on the top. Stakes, not stones, are called in the previous BCS records, but this stone did appear that it may have been set to mark the corner. In any case, the stone fit well with the found evidence, being adjacent to the old post and providing a solution for the range line which is a best-fit solution with respect to the east-west positions of the two posts. The stone was held as marking Corner 2 and was replaced with a Harrison monument on December 14, 2021. The position of Corner 1 was established on the southerly prolongation of the line connecting the Harrison monument at the northeast corner of Section 36 with Corner 2, at the same distance as separates the found stone and the post providing evidence of Corner 1. This position fell at the east edge of the old wood corner post. A Harrison monument was set at this position, also on December 14, 2021. It is noted that the distance of 72.8 feet which separates the monuments is 2.2 feet longer than the reported distance of 107 links.

Corner 1 was originally established as a wood post in 1819. Corner 2 is not an original federal corner.

① East Quarter Corner
Section 36, T 20 N, R 1 E
Harrison Monument Set

② West Quarter Corner
Section 31, T 20 N, R 2 E
Harrison Monument Set

Distance between
monuments: 72.8'



Kenneth E. Hedge
Kenneth E. Hedge, County Surveyor

James S. Swift
James S. Swift, IN LS 20200054

Clinton Township	Marion Township
Section 36 T20N, R1E	Section 31 T20N, R2E

December 20, 2021

SECTION CORNER RECORD

NE 700-600

BOONE COUNTY SURVEYOR'S OFFICE

State Plane grid coordinates NAD83 (2011):

Corner 1: North: 1783137.43 East: 3155919.39 (U.S. survey feet)

Type of monument: Harrison, 4" disk 'Section Corner'

Depth: Three inches above surrounding ground

Indiana tie card references:

IN02_T20NR2E30_72 IN02_T20NR1E25_80

IN02_T20NR1E36_08 IN02_T20NR2E31_00

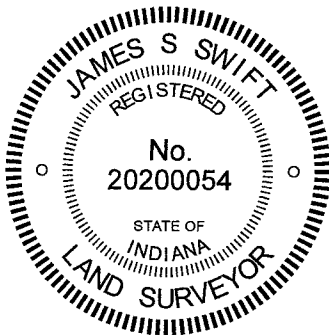
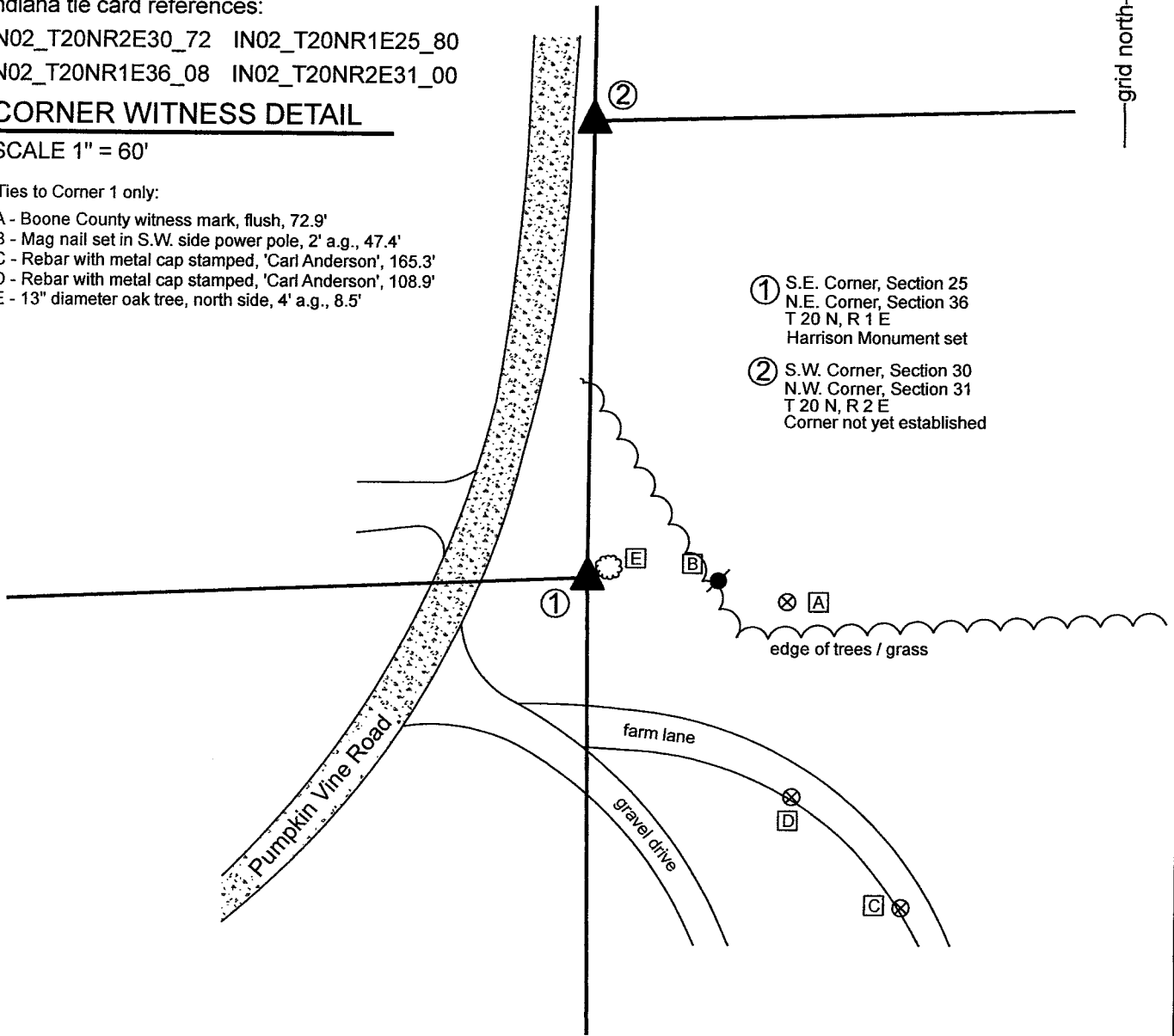
CORNER WITNESS DETAIL

SCALE 1" = 60'

Ties to Corner 1 only:

- A - Boone County witness mark, flush, 72.9'
- B - Mag nail set in S.W. side power pole, 2' a.g., 47.4'
- C - Rebar with metal cap stamped, 'Carl Anderson', 165.3'
- D - Rebar with metal cap stamped, 'Carl Anderson', 108.9'
- E - 13" diameter oak tree, north side, 4' a.g., 8.5'

- ① S.E. Corner, Section 25
N.E. Corner, Section 36
T 20 N, R 1 E
Harrison Monument set
- ② S.W. Corner, Section 30
N.W. Corner, Section 31
T 20 N, R 2 E
Corner not yet established



Kenneth E. Hedge
Kenneth E. Hedge, County Surveyor

James S. Swift
James S. Swift, IN LS 20200054

Clinton Township	Marion Township
Section 25 T20N, R1E	Section 30 T20N, R2E
Section 36 T20N, R1E	Section 31 T20N, R2E

SECTION CORNER RECORD

BOONE COUNTY SURVEYOR'S OFFICE

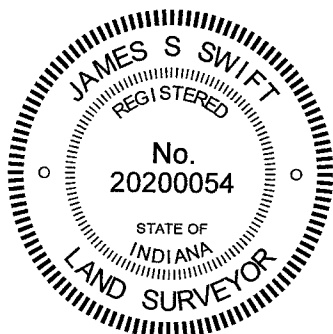
NE 700-600

WRITTEN DOCUMENTATION


The Harrison monument at Corner 1 was set in place of a rebar found. The precise position of Corner 2 has not been established as of the publication of this document. No specific descriptions of Corner 1 were found in the BCS Surveyor's Record beyond the original establishment of the corner as a wood post in 1819. Corner 2 is referenced in an entry of December 19-21, 1865 which states that the corner was "found by measuring from N.E. corner, Sect. 36." This record does not state what, if any, monument was set at that time nor does it specify by what 'measure' the corner was established.

Substantial reconnaissance was performed with respect to these corners and adjacent private properties to the southeast and southwest in November, 2020. A survey by Ronald A. Wharry, LS No. S0420 dated December 22, 1992, which is not recorded in the Office of the Boone County Recorder but was provided by an adjacent property owner shows Corner 1 as a rebar set and shows Corner 2 at or near a wood corner post. The rebar which set to mark Corner 1 as part of that survey was found in good condition, evidently undisturbed. The position of the monument was confirmed with respect to the relative positions of other monuments shown on the survey. The position of the corner works well with adjacent monuments and deed calls for properties to the southeast, southwest and northwest. A post shown as Corner 2 was also found. It is noted that the distance between the post and the rebar is 165.5 feet, substantially longer than the 213 link (140.6 feet) offset recorded by the federal surveyors in 1822. It is further noted that the position of the rebar marking Corner 1 works well with the available evidence of properties in Range 1 East and that the post appears to work with evidence in Range 2 East.

Probing and manual evidence in the immediate vicinity of the Wharry rebar revealed no stones or further evidence of Corner 1. Manual excavation in the vicinity of the wood post revealed several rocks, none of which appeared to represent corner stones. The Wharry rebar was accepted as the best available evidence of Corner 1 and was replaced with a Harrison monument on December 10, 2020. The position of Corner 2 remains uncertain, pending further investigation as well as excavation of the section corners approximately 1/2 mile north.




Kenneth E. Hedge, County Surveyor


James S. Swift, IN LS 20200054

SECTION CORNER RECORD

NE 700-650

BOONE COUNTY SURVEYOR'S OFFICE

State Plane grid coordinates NAD83 (2011):

CORNER: North: 1783374.22 East: 3158761.61 (U.S. survey feet)

WITNESS: North: 1783374.97 East: 3158761.61 (U.S. survey feet)

Type of monument at corner: Wood corner post.

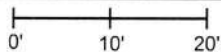
Witness monument: 5/8 inch rebar with metal cap 'Boone County Surveyor'

Indiana tie card references:

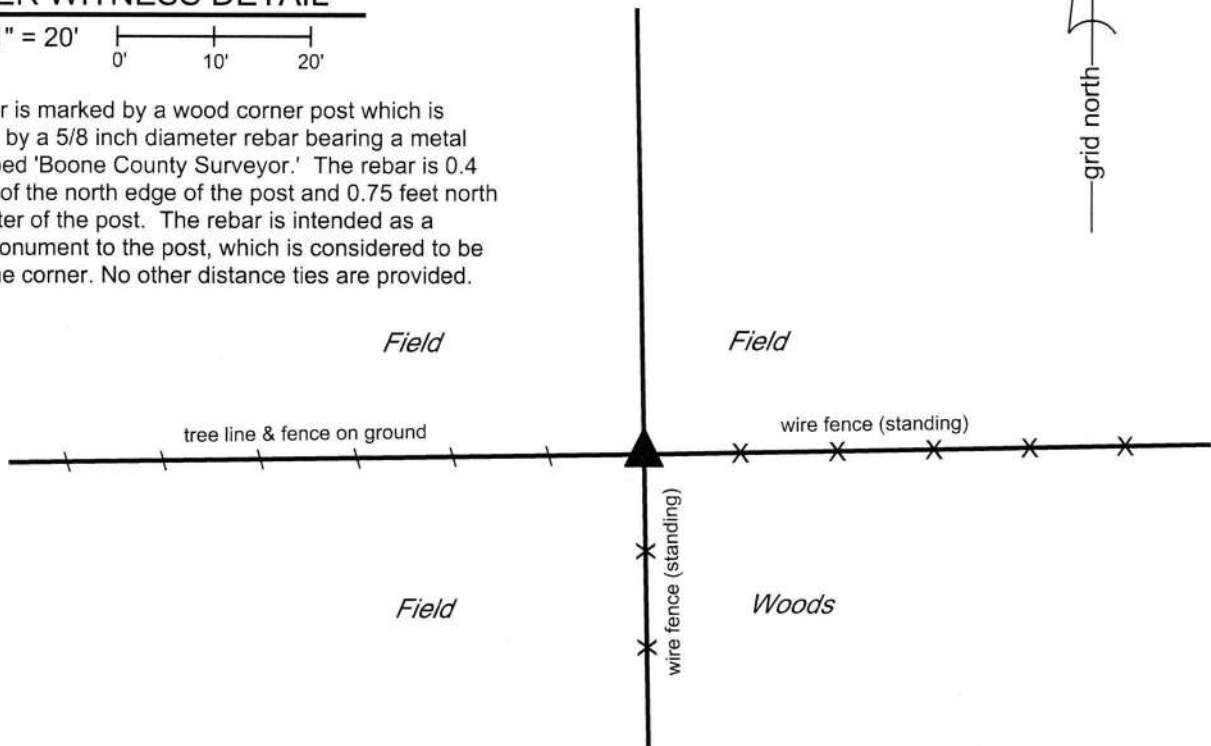
IN02_T20NR2E30_76 IN02_T20NR2E31_04

CORNER WITNESS DETAIL

SCALE 1" = 20'



The corner is marked by a wood corner post which is witnessed by a 5/8 inch diameter rebar bearing a metal cap stamped 'Boone County Surveyor.' The rebar is 0.4 feet north of the north edge of the post and 0.75 feet north of the center of the post. The rebar is intended as a witness monument to the post, which is considered to be marking the corner. No other distance ties are provided.

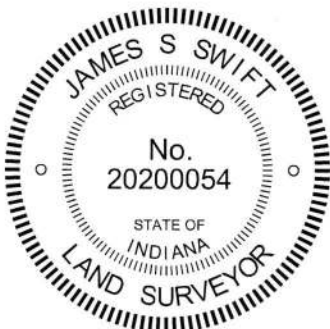


The wood post was found in place. The 5/8 inch rebar is intended as a witness to the wood post and is not intended to mark the corner.

No specific descriptions of this corner were found in the BCS Surveyor's Record. It is mentioned as the terminal point for measurements in a few records from the 1800s. No recent BCS tie cards were found referencing the corner.

This corner was excavated on March 15, 2018. Prior to excavation, a wood post was found at the intersection of standing fences to the south and east and a fence to the west which is mostly on the ground. Probing and manual excavation around the post revealed several stones, none of which bore the characteristics of a stone which had been purposely set to mark the corner. The presence of a tree at the southwest edge of the post rendered substantial probing in that quadrant unfeasible.

The position of the post fits well with proximate corners. The post was accepted as the best available evidence of the original position of the corner and was accepted as marking the corner. As the fences to the south and east are standing and reasonably well maintained, the post was left in place. As noted above, the rebar is intended as a witness to the post. The center of the post is held as marking the corner. This corner was originally established as a wood post in 1821.



Kenneth E. Hedge
Kenneth E. Hedge, County Surveyor

James S. Swift
James S. Swift, IN LS 20200054
April 3, 2018

Marion Township

