

# SECTION CORNER RECORD

## BOONE COUNTY SURVEYOR'S OFFICE

NW 600-500

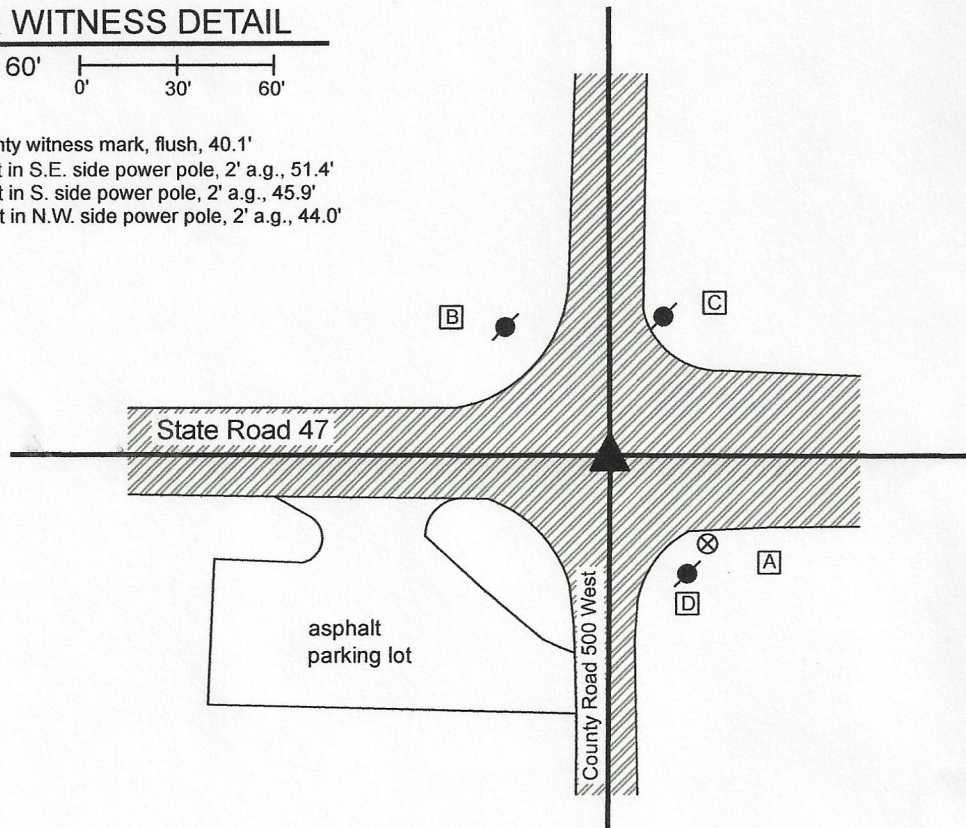
State Plane grid coordinates NAD83 (2011):  
 North: 1777316.20 East: 3098345.81 (U.S. survey feet)  
 Type of monument: Plug in monument box, INDOT Type B  
 Depth: flush with adjacent road surface

Indiana tie card references:  
 IN02\_T20NR1W31\_80 IN02\_T20NR1W32\_72  
 IN02\_T19NR1W06\_08 IN02\_T19NR1W05\_00

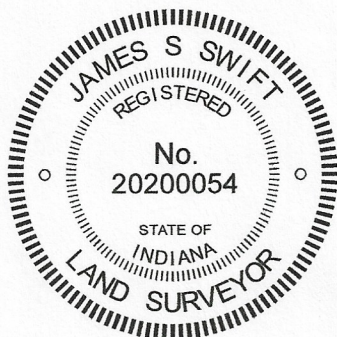
### CORNER WITNESS DETAIL

SCALE 1" = 60'

- A - Boone County witness mark, flush, 40.1'
- B - Mag nail set in S.E. side power pole, 2' a.g., 51.4'
- C - Mag nail set in S. side power pole, 2' a.g., 45.9'
- D - Mag nail set in N.W. side power pole, 2' a.g., 44.0'



The INDOT Type B monument was found in place and held as marking the corner.  
 No specific descriptions of this corner were found in the BCS Surveyor's Record beyond the original establishment of the corner as a wood post in 1819. Though on a township line, this corner represents a common corner for the sections in township 20 north and township 19 north, as the notes for the subdivision of township 19 north, range 1 west, 1829, state that the closing corner fell "at post" and no township line offset was recorded.  
 A BCS tie card dated June 22, 2005 shows the corner as a PK Nail in the center of the intersection of the two roads. At some point between that date and January 2, 2007 (exact date not known), the PK nail was replaced with an INDOT Type B monument in the same position. As this corner falls in a state road, no significant excavation was performed. The INDOT Type B monument is held as marking the corner.



*Kenneth E. Hedge*  
 Kenneth E. Hedge, County Surveyor

*James S. Swift*  
 James S. Swift, IN LS 20200054

June 1, 2020

Washington Township

Section 31 T20N, R1W	Section 32 T20N, R1W
Section 6 T19N, R1W	Section 5 T19N, R1W



# SECTION CORNER RECORD

## BOONE COUNTY SURVEYOR'S OFFICE

NW 600-550

State Plane grid coordinates NAD83 (2011):

North: 1777324.54 East: 3095692.96 (U.S. survey feet)

Type of monument: Plug in monument box, INDOT Type B

Depth: Flush with adjacent road surface

Indiana tie card references:

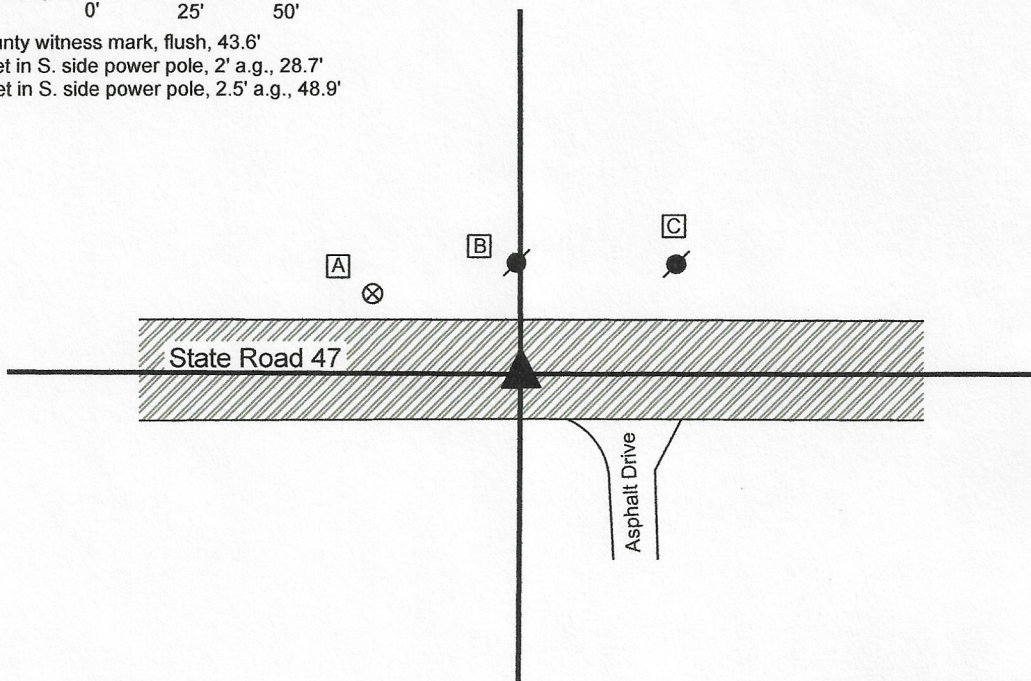
IN02\_T20NR1W31\_76

IN02\_T19NR1W06\_08

### CORNER WITNESS DETAIL

SCALE 1" = 50'

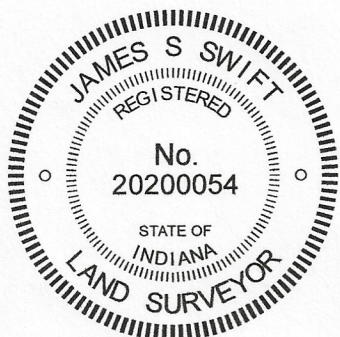
- A - Boone County witness mark, flush, 43.6'
- B - Mag nail set in S. side power pole, 2' a.g., 28.7'
- C - Mag nail set in S. side power pole, 2.5' a.g., 48.9'



The INDOT Type B monument was found in place and held as marking the corner.

No specific descriptions of this corner were found in the Boone County Surveyor's Record beyond the original establishment of the corner as a wood post in 1819. During the 1829 subdivision of Township 19 North, Range 1 West, no offset was observed on the township line for the standard and closing corners at the northeast corner of section 6 and southeast corner of section 31, hence no offset exists at this corner. This corner represents a common, single corner for section 6 and section 31.

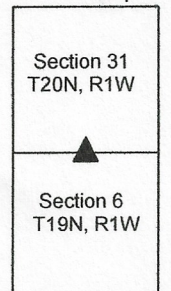
A BCS tie card dated June 22, 2005 shows the corner as a railroad spike. This monument was replaced with an INDOT Type B monument at some point (exact date not known) between that date and January 2, 2007. The Type B monument is held as marking the corner. No significant excavation was performed at this corner as it falls in a state road.



*Kenneth E. Hedge*  
 Kenneth E. Hedge, County Surveyor

*James S. Swift*  
 James S. Swift, IN LS 20200054  
 June 1, 2020

Washington Township





# SECTION CORNER RECORD

## BOONE COUNTY SURVEYOR'S OFFICE

NW 700-600

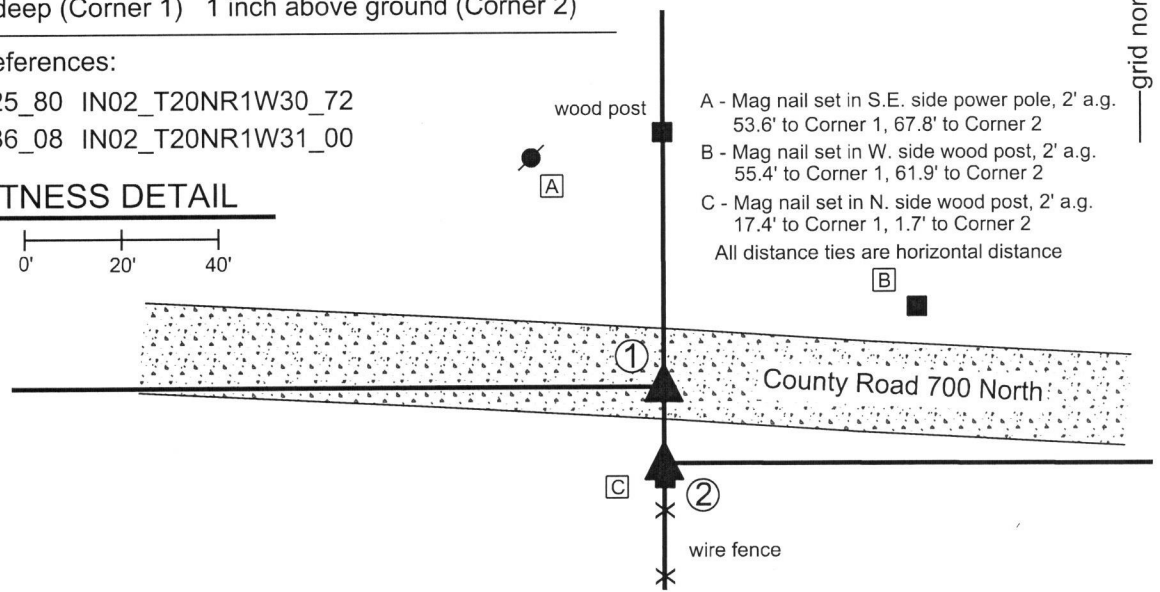
State Plane grid coordinates NAD83 (2011):  
 Corner 1: North: 1782631.81 East: 3093109.89 (U.S. survey feet)  
 Corner 2: North: 1782616.01 East: 3093109.93 (U.S. survey feet)

Type of monument: Harrison, 4" disk 'Section Corner'  
 Depth: 4 inches deep (Corner 1) 1 inch above ground (Corner 2)

Indiana tie card references:  
 IN02\_T20NR2W25\_80 IN02\_T20NR1W30\_72  
 IN02\_T20NR2W36\_08 IN02\_T20NR1W31\_00

### CORNER WITNESS DETAIL

SCALE 1" = 40'



- ① S.E. Corner, Section 25  
N.E. Corner, Section 36  
T 20 N, R 2 W
- ② S.W. Corner, Section 30  
N.W. Corner, Section 31  
T 20 N, R 1 W

Distance between monuments: 15.8'  
 Federal closing dist. 27 links (17.82')

- A - Mag nail set in S.E. side power pole, 2' a.g.  
53.6' to Corner 1, 67.8' to Corner 2
  - B - Mag nail set in W. side wood post, 2' a.g.  
55.4' to Corner 1, 61.9' to Corner 2
  - C - Mag nail set in N. side wood post, 2' a.g.  
17.4' to Corner 1, 1.7' to Corner 2
- All distance ties are horizontal distance

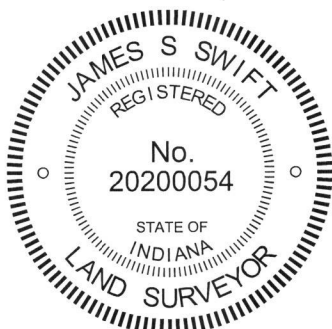
The Harrison monument at Corner 1 was set in place of a stone found. The Harrison monument at Corner 2 was set in place of a stone known to formerly mark the corner.

No specific descriptions of Corner 1 were found in the BCS Surveyor's Record beyond the original establishment of the corner as a wood post in 1819. Corner 2 is described in a record of March 10, 1906 which states, 'Found Rock.' This entry also includes distances, in feet, to the adjacent corner 1/4 mile south. The original federal closing distance on the range line, reported in 1829 is 27 links south, or 17.82 feet. No recent BCS tie cards were found referencing the corner. Corner 2 is shown as being a stone on a survey by Cary B. Dodge, LS #S0288, recorded in Survey Book 1, pages 11-12 and on a survey by Jerry L. Carter, LS #S0350, recorded in Survey Book 11, page 64, both in the Recorder's Office of Boone County. Corner 2 is shown as a rebar on a survey by Jonathon E. Hause, LS 20600040, recorded in Survey Book 18, pages 86-87. This stone was found and located in 2010. The rebar was found in 2018, in approximately the same position as the stone. The stone was not observed to be present in 2018. Corner 2 is also called as a stone in the deed for the adjoining property to the north, Slipher, Instrument 200600013687. The Slipher deed describes Corner 1 as being 17.82 feet north of the stone at Corner 2. The found stone/rebar at Corner 2 work with monuments found marking corners of the Slipher parcel. The 1923 plans for US 52, called Lafayette Pike, do not provide reliable information about the position of the corners or the line between sections 30 and 31, as they cross the highway.

It is noted that County Road 700 North does not line up well with the section lines in this vicinity. Most deeds for land east of U.S. 52 call for the section line to be along or near the north right-of-way line, which works with the stone found at Corner 2 and a stone found at the north quarter corner of section 31 (see BCS Corner NW 700-550). Excavation on March 15, 2019 revealed a stone found at 10 inches deep, at the bottom of the road bed of County Road 700 North, 15.8 feet north of the rebar ostensibly marking Corner 2. This stone measured 8 inches N-S by 10 inches E-W by 8 inches tall. With respect to the evidence of the County Road 700 North, the stone appeared in the field as if it could be either corner. However, the stone (now rebar) at Corner 2 is substantiated as the corner not only by the numerous deeds and surveys which are tied to it, but also by a distance reference in the 1906 BCS record which calls the corner as being 1322-1/2 feet north of Corner "h" of section 31. The distance between the stone/rebar and a post found providing evidence of Corner "h" was measured to be 1322.9 feet. Hence, it is accepted that the stone at Corner 2 held as the corner by modern surveyors was also held as the corner by the Boone County Surveyor in 1906. The stone found in the road bed was accepted as marking Corner 1 and was replaced with a Harrison monument on April 1, 2019. The stone, now rebar, on the south edge of the road was accepted as providing reliable evidence of Corner 2. Approximately one-half foot of uncertainty is associated with the various calls for the stone and rebar. The north-south position of the rebar was held for Corner 2 but the Harrison monument was set on the range line, defined by the stone at Corner 1 and a nail providing evidence of the corner 1/2 mile south. This position is 0.2 foot west of the rebar and within the extent of uncertainty of the position of the stone. Corner 2 was monumented on April 10, 2019.

Sugar Creek Township      Washington Township

Section 25 T20N, R2W	Section 30 T20N, R1W
Section 36 T20N, R2W	Section 31 T20N, R1W



*Kenneth E. Hedge*  
 Kenneth E. Hedge, County Surveyor

*James S. Swift*  
 James S. Swift, IN LS 20200054  
 April 24, 2019