

SECTION CORNER RECORD

NE 600-000

BOONE COUNTY SURVEYOR'S OFFICE

State Plane grid coordinates NAD83 (2011):
North: 1777284.21 East: 3124807.27 (U.S. survey feet)

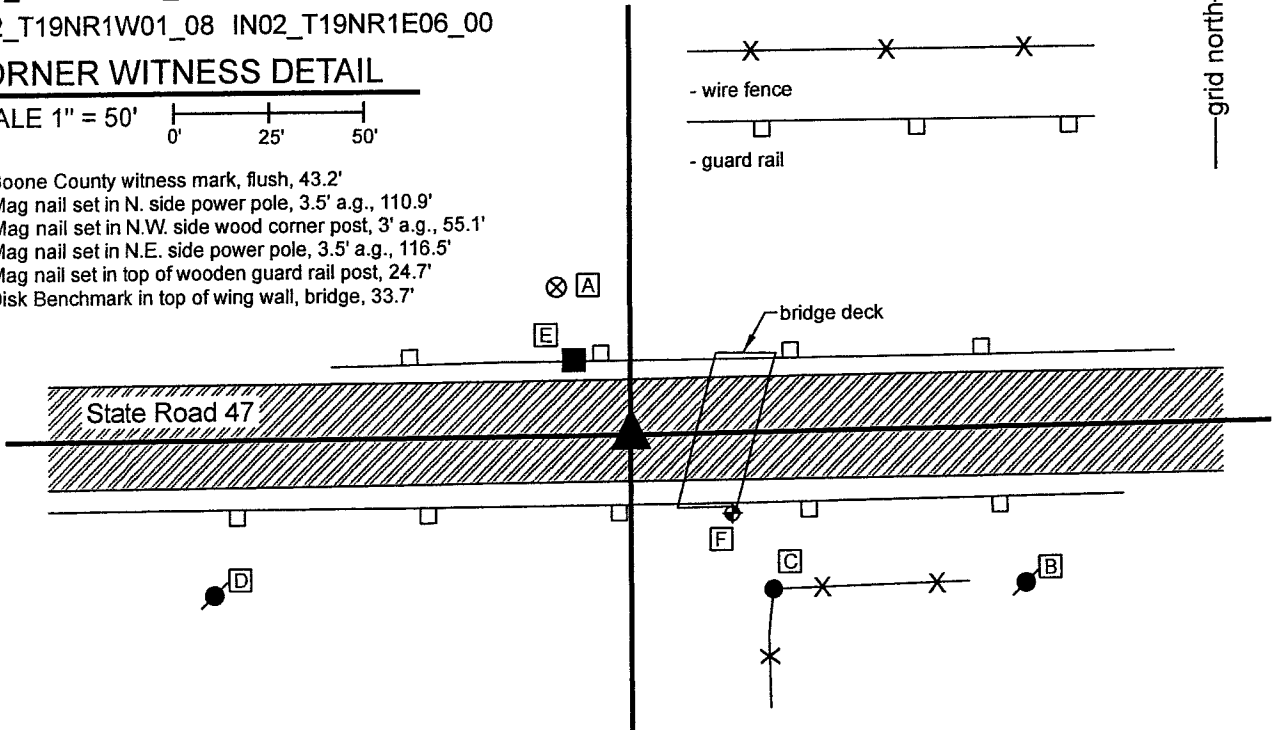
Type of monument: INDOT Type B, plug in monument box
Depth: Flush with adjacent road surface

Indiana tie card references:
IN02_T20NR1E31_72 IN02_T20NR1W36_80
IN02_T19NR1W01_08 IN02_T19NR1E06_00

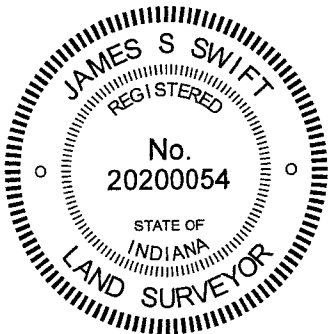
CORNER WITNESS DETAIL

SCALE 1" = 50'

- A - Boone County witness mark, flush, 43.2'
- B - Mag nail set in N. side power pole, 3.5' a.g., 110.9'
- C - Mag nail set in N.W. side wood corner post, 3' a.g., 55.1'
- B - Mag nail set in N.E. side power pole, 3.5' a.g., 116.5'
- E - Mag nail set in top of wooden guard rail post, 24.7'
- F - Disk Benchmark in top of wing wall, bridge, 33.7'



The INDOT Type B monument was found in place.
 A BCS record of November 10, 1887 shown in the records of Section 36, Township 20 North, Range 1 West states, with respect to this corner, "Drove stake in road at corner, 36 1/2 links north of corner."
 A BCS tie card dated 2004 shows the corner as a P.K. Nail with washers. A subsequent BCS tie card, dated June 22, 2005, shows the corner as a Type "C" Monument in the same position as the nail shown on the previous tie card.
 The monument found, being an INDOT Type 'B' monument, appears to be the same monument, in the same position, as those shown on the 2005 tie cards. This corner falls amidst an area of fill immediately west of a bridge under State Road 47. The only local evidence of the corner is the east-west state road. The position of the corner fits well with the relative positions of proximate corners to the east and west.
 No excavation was performed at this corner, as it falls in a state highway and is an area of fill. The existing monument is held as the best available evidence of the respective corner. This township corner was originally established as a wood post in 1819.



Kenneth E. Hedge
 Kenneth E. Hedge, County Surveyor

James S. Swift
 James S. Swift, IN LS 20200054
 January 26, 2021

Washington Township	Clinton Township
Section 36 T20N, R1W	Section 31 T20N, R1E
Section 1 T19N, R1W	Section 6 T19N, R1E

SECTION CORNER RECORD

NE 600-100

BOONE COUNTY SURVEYOR'S OFFICE

State Plane grid coordinates NAD83 (2011):

Corner 1: North: 1777337.73 East: 3129618.11 (U.S. survey feet)

Corner 2: North: 1777340.10 East: 3129793.16 (U.S. survey feet)

Type of monument: Plug in monument box, INDOT Type B

Depth: One inch below adjacent road surface

Indiana tie card references:

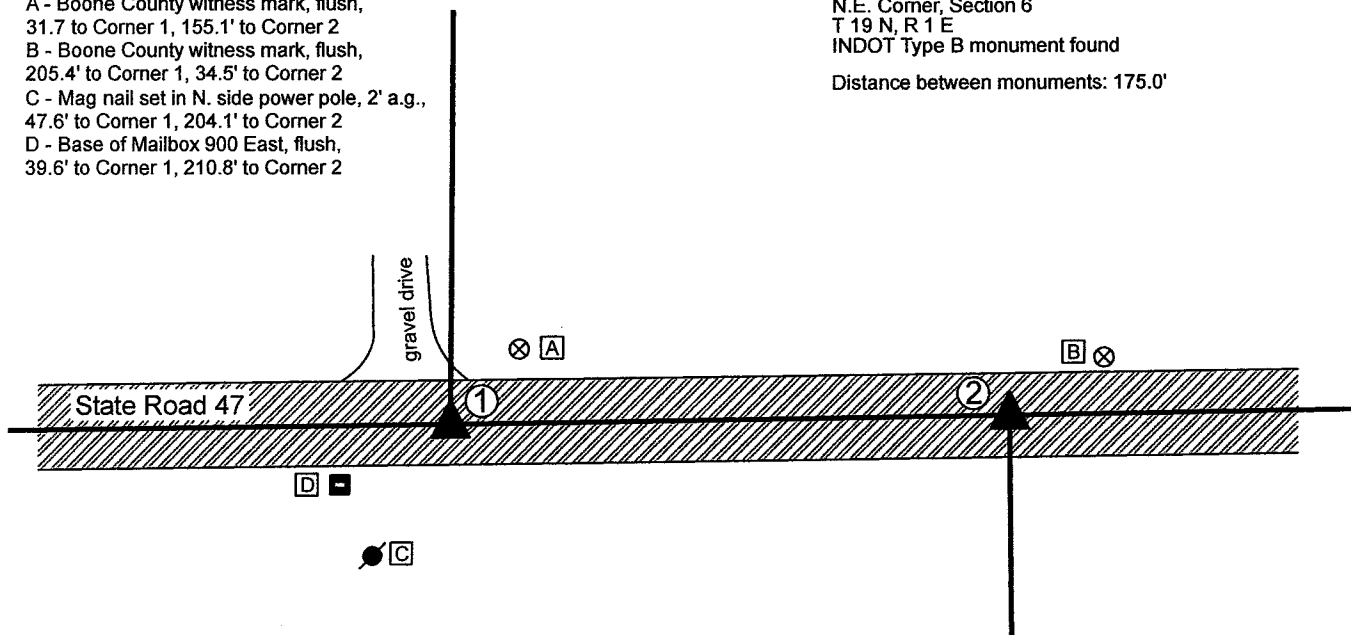
IN02_T20NR1E32_72 IN02_T20NR1E31_80

IN02_T19NR1E06_08 IN02_T19NR1E05_00

CORNER WITNESS DETAIL

SCALE 1" = 60'

- A - Boone County witness mark, flush, 31.7' to Corner 1, 155.1' to Corner 2
- B - Boone County witness mark, flush, 205.4' to Corner 1, 34.5' to Corner 2
- C - Mag nail set in N. side power pole, 2' a.g., 47.6' to Corner 1, 204.1' to Corner 2
- D - Base of Mailbox 900 East, flush, 39.6' to Corner 1, 210.8' to Corner 2



- ① S.E. Corner, Section 31
S.W. Corner, Section 32
T 20 N, R 1 E
INDOT Type B monument found
 - ② N.W. Corner, Section 5
N.E. Corner, Section 6
T 19 N, R 1 E
INDOT Type B monument found
- Distance between monuments: 175.0'

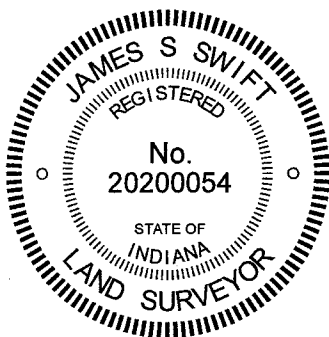
The INDOT Type B monuments were found in place and held as marking the respective corners.

A BCS record of June 2-3, 1862 states, with respect to Corner 1, "Found by measuring the lap from corners Sections 5&6 where found a stone and one tree. Set two Rocks at G. One 8.7 by 5. Top one 24.16 by 8 in." No specific descriptions of Corner 2 were found in the BCS Surveyor's Record beyond the original establishment of the corner as a wood post in 1822, 265 links east of Corner 1, though the corner is referenced in the 1862 record for Corner 1.

A BCS tie card dated June 22, 2005 shows both corners at Type "C" monuments.

The found monuments, being INDOT Type B monuments, fit with the 2005 tie card and also fit with evidence of occupation in the form of the edge of a field and lawn to the north and a field division to the south, respectively. The distance between the monuments fits within 0.2 foot of the original federal closing distance of 265 links. No excavation was performed at these corners as they fall in a state road. The found Type B monuments were held as marking the respective corners.

Corner 1 was originally established as a wood post in 1819. Corner 2 was originally established as a wood post in 1822.



Kenneth E. Hedge, County Surveyor

James S. Swift, IN LS 20200054
December 20, 2021

Clinton Township

Section 31 T20N, R1E	Section 32 T20N, R1E
Section 6 T19N, R1E	Section 5 T19N, R1E

SECTION CORNER RECORD

BOONE COUNTY SURVEYOR'S OFFICE

NE 650-100

State Plane grid coordinates NAD83 (2011):
 North: 1779975.21 East: 3129622.37 (U.S. survey feet)

Type of monument: + mark on granite stone
 Depth: 2 inches below adjacent ground

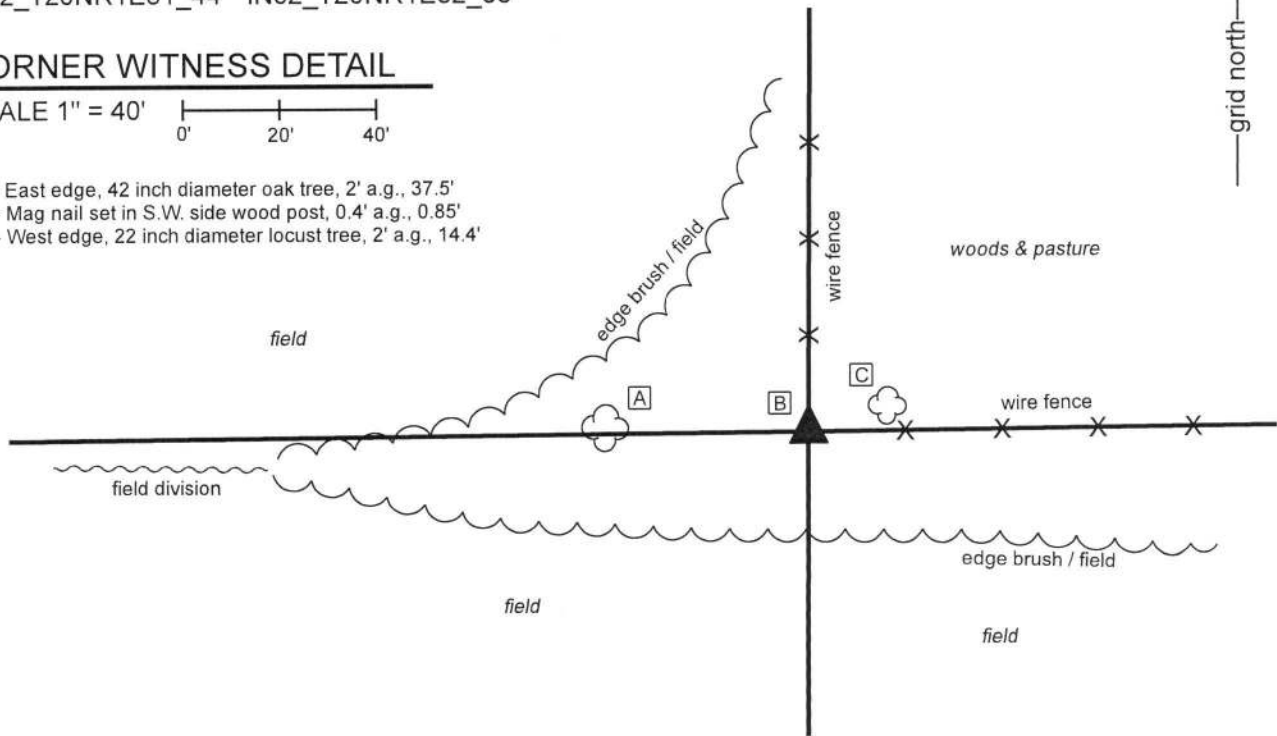
Indiana tie card references:
 IN02_T20NR1E31_44 IN02_T20NR1E32_36



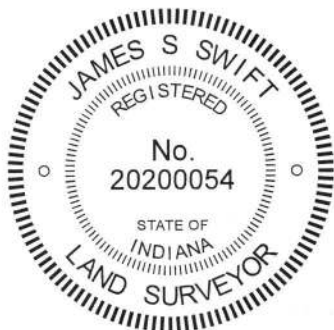
CORNER WITNESS DETAIL

SCALE 1" = 40'

- A - East edge, 42 inch diameter oak tree, 2' a.g., 37.5'
- B - Mag nail set in S.W. side wood post, 0.4' a.g., 0.85'
- C - West edge, 22 inch diameter locust tree, 2' a.g., 14.4'

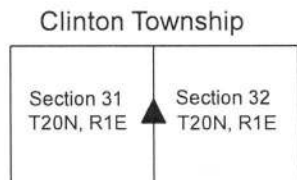


The stone was found in place. This stone is described in a BCS record of June 2-3, 1862, which states "Reestablished from sugar and roots of ash. Set two rocks, one 3. 2 1/2 by 2 inches. Top rock 22.15.8 in. marked X."
 The stone was found on March 18, 2019 at the south edge of a post which represents the terminus of a standing fence to the north and at the east edge of a post (leaning substantially and loose in the ground) which is in-line with standing fence to the east. As found, the stone was approximately 4 inches below grade. After removal of various brush, dirt and detritus, the stone was left exposed, approximately 2 inches below the surrounding dirt. The stone has a distinct X mark on the top. The top of the stone is approximately 12 inches N-S by 8 inches E-W. The north, east and west sides of the stone appear to be vertical. The south side of the stone slopes to a point approximately 9 inches below the top, below which the south side also appears to be vertical. At 9 inches below the top, the stone measures 15 inches N-S by 8 inches E-W, matching two of the dimensions in the 1862 record. The top 11 inches of the stone were exposed. Probing along the east edge of the stone indicates that it is approximately 22 inches tall. The lower stone was not detected with a probe, as it is substantially smaller than the larger stone.
 The stone matches the dimensions recited in the 1862 record and was accepted as marking the corner and left in place with the top exposed. No recent BCS tie cards or recorded surveys were found referencing this corner. No rebars or other modern survey monuments were found in the vicinity of the corner.
 This corner was originally established as a wood post in 1822.



Kenneth E. Hedge
 Kenneth E. Hedge, County Surveyor

James S. Swift
 James S. Swift, IN LS 20200054
 April 3, 2019



SECTION CORNER RECORD

NE 700-050

BOONE COUNTY SURVEYOR'S OFFICE

State Plane grid coordinates NAD83 (2011):

North: 1782594.62 East: 3127006.89 (U.S. survey feet)

Type of monument: Harrison, 4" disk 'Section Corner'

Depth: Flush with slope on south side, 5" a.g. on north side

Indiana tie card references:

IN02_T20NR1E30_76 IN02_T20NR1E31_04

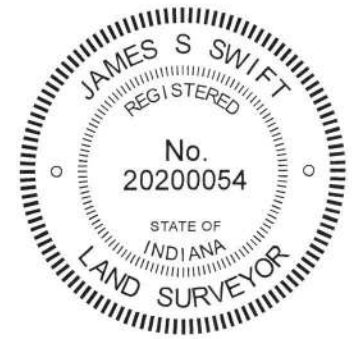
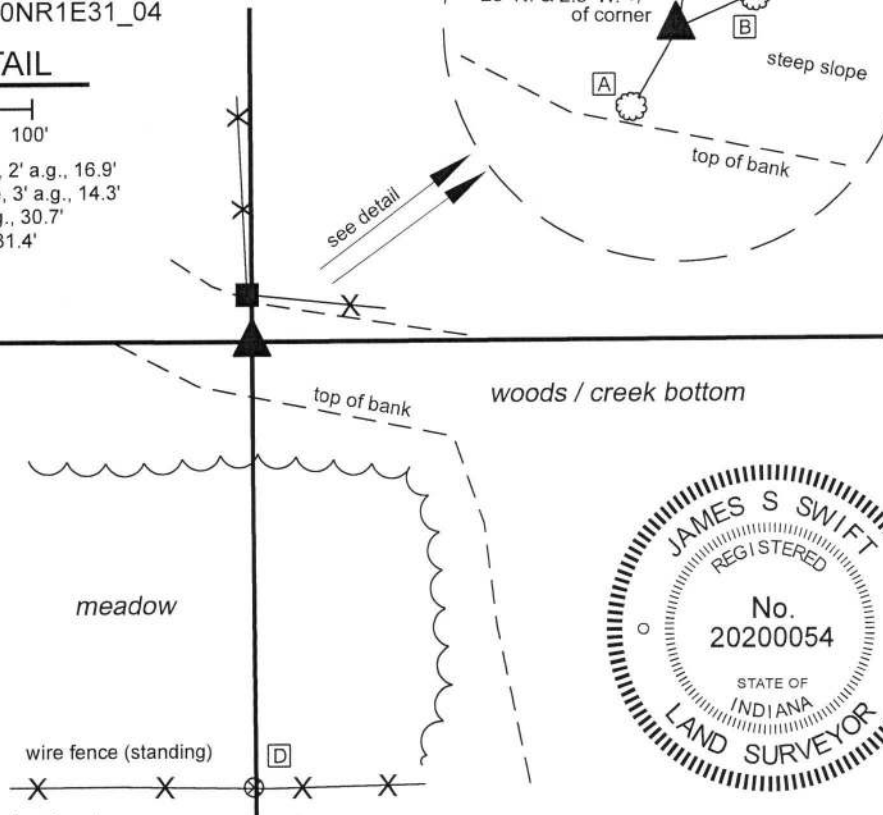
CORNER WITNESS DETAIL

SCALE 1" = 100'

- A - 1' diameter Sycamore Tree, N.E. Edge, 2' a.g., 16.9'
- B - 4' diameter Sycamore Tree, S.W. Edge, 3' a.g., 14.3'
- C - 2' diameter Walnut Tree, S. Edge, 5'a.g., 30.7'
- D - 5/8" Rebar - Dodge S0288, 0.2' a.g., 231.4'

- wire fence (on ground in valley)

- edge of woods and meadow



The Harrison monument was set in place of a rebar found.

No specific descriptions of this corner were found in the BCS Surveyor's Record beyond the original establishment of the corner as a wood post in 1822. The corner is shown as being established but not monumented on a survey by Jerry L. Carter, LS #S0350, Anderson and Associates Land Surveyors Job #040303, dated April 1, 2004. The same apparent position is shown as being monumented by a capped rebar on a survey by Jonathon E. Hause, LS 20600040 on a survey dated October 11, 2011 and recorded in Survey Book 13, page 53 in the Office of the Boone County Recorder. Both surveys demonstrate that this position was established at a double distance prolongation of a line from a nail held as marking the center of section 30 through a headpost found 1/4 mile south thereof. Both surveys show the position to be south and east of a wood corner post found. This corner was investigated March, 2019. A rebar bearing a blue cap stamped 'Hause PLS20600040' was found at the position shown on the aforementioned Hause survey. The wood corner post was found nearby, on the ground, north and west of the corner position, as demonstrated on the surveys. It is noted that the corner position shown on the Carter and Hause surveys falls on a steep slope and that the post and fence bearing east from it are along the bottom of slope of the steep bank, indicating that they were installed in that location for practical reasons of fencing along the bottom of the hill. Hence, the post is not considered reliable evidence of the corner. It is also noted that the section of north south fence (on the ground), though not along the half-mile section line, bears toward the corner position, as monumented by the rebar. The position of the rebar works well with the relative positions of proximate corners and with the closing distance to the range line, 1/2 mile west. It also works reasonably well calls in deeds to the south and east. The descriptions of the land to the west and adjoining strip of land to the south were described from the monumented position per the Carter survey. The description of the Hamstra property to the west (I9604352) appears to be referenced to the corner post. As noted, the post is not considered reliable evidence of the corner and the position established by Carter and held by Hause was accepted as the corner. The rebar was removed and replaced with a Harrison monument in the same position on March 25, 2019.

Clinton Township

Section 30
T20N, R1E

Section 31
T20N, R1E

Kenneth E. Hedge, County Surveyor

James S. Swift, IN LS 20200054
May 22, 2019