

SECTION CORNER RECORD

NW 000-500

BOONE COUNTY SURVEYOR'S OFFICE

State Plane grid coordinates NAD83 (2011):

Corner 1: North: 1745537.70 East: 3098351.72 (U.S. survey feet)

Corner 2: North: 1745537.76 East: 3098321.60 (U.S. survey feet)

Corner 1 only:

Type of monument: Harrison, 4" disk 'Section Corner'

Depth: flush with shoulder of road

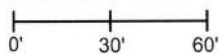
Indiana tie card references:

IN02_T19NR1W31_80 IN02_T19NR1W32_72

IN02_T18NR1W06_08 IN02_T18NR1W05_00

CORNER WITNESS DETAIL

SCALE 1" = 60'



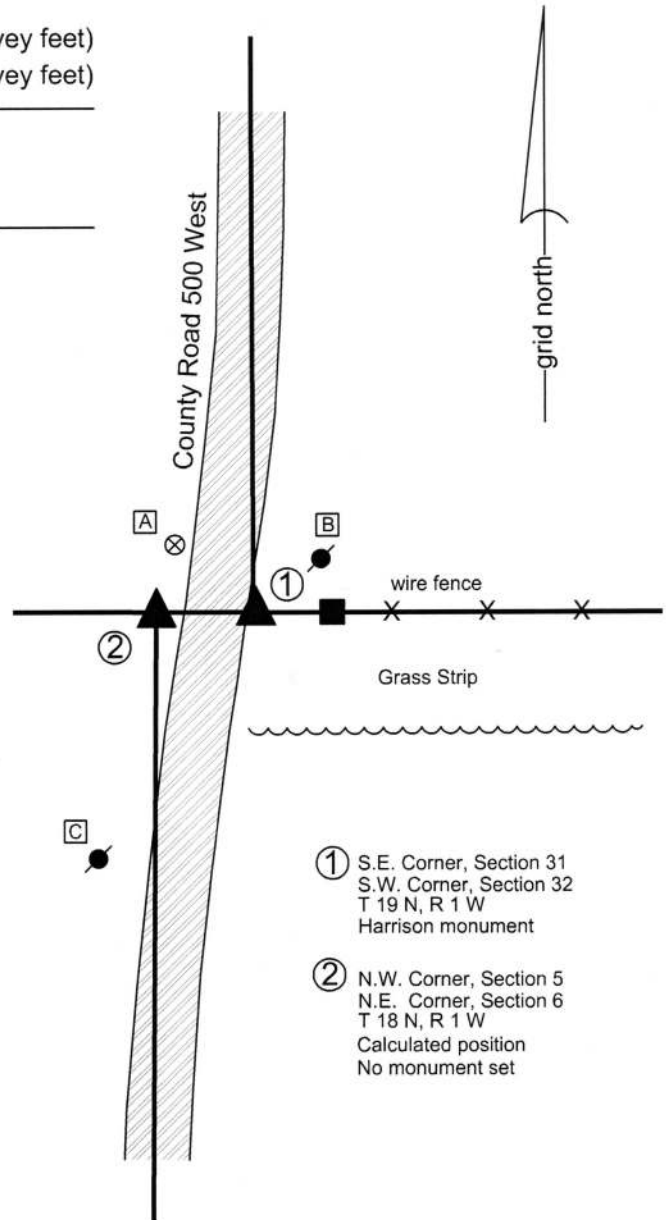
The Harrison monument at Corner 1 was set at a calculated position. No monument was set at Corner 2, as this position falls on an exposed section of metal culvert. The position of Corner 2 is shown as calculated.

No excavation was performed at these corners as the presence of twin culverts indicates that any ancient evidence which may have existed at these corners is no longer present. The position of Corner 2 was established by this office in 1968. A tie card dated September 9, 1968 states "no stone." While the type of monument established that day is not specifically stated, it is known to have been a common practice for BCS field crews to set vertical sections of railroad rails at corners, particularly when the reference remarks are "no stone." The position of Corner 2 was established with respect to deed calls to the corner in both sections 5 and 6. The specific position of the corner was established at the prolongation of a line connecting a railroad rail previously accepted as marking the quarter corner to the south (see Corner SW-050-700 and note that the position held for establishing the corner which is the subject of the current record is that of the railroad rail found during excavation in 2016 but not held as the corner) through a railroad spike found marking the west line of the northwest quarter of section 5 at a point 735 feet south of the subject corner, per calls in Instrument 201300009089 in the Boone County Recorder's Office.

The position of Corner 1 was established in the north-south dimension with respect to the position of Corner 2 and the quarter corner to the east (see Corner NW-000-450). The position of Corner 1 was established in the east-west dimension with respect to the position of the quarter corner to the north (see Corner NW-050-500) and a railroad spike found 448.6 feet north of the corner (deed call of 449.51'), per Document 9601416 in said Recorder's Office. A Harrison monument was set at Corner 1 on September 23, 2016. This monument is directly above a section of metal culvert pipe, but is in sufficient fill to be firmly attached to the ground.

Uncertainties in the north-south dimension of up 1 foot exist with respect to the position of Corner 1 and the previously held position of the corner, per the calls in Document 9601416. Uncertainties of up to 3 feet east-west exist with respect to the relative positions of the two corners, as the original closing distance was 50 links, but the corners, as established herein, are separated by approximately 3 feet less than the original closing distance.

Corner 1 was originally established as a wood post in 1819. Corner 2 was originally established as a wood post in 1820.



① S.E. Corner, Section 31
S.W. Corner, Section 32
T 19 N, R 1 W
Harrison monument

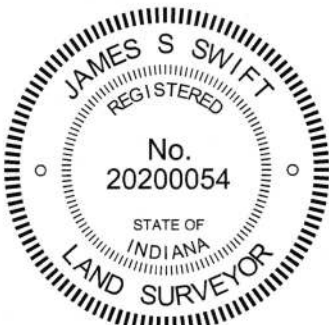
② N.W. Corner, Section 5
N.E. Corner, Section 6
T 18 N, R 1 W
Calculated position
No monument set

A - Boone County witness mark, flush, 32.2'

B - Mag nail set in S.W. side power pole, 2' a.g., 24.1'

C - Mag nail set in E. side power pole, 2' a.g., 89.3'

Note: ties are to Corner 1 only, which is a Harrison monument set on the east shoulder of C.R. 500 West, adjacent to the roadway. Corner 2 falls on an area of exposed culvert. No monument was set at this position.



Kenneth E. Hedge
Kenneth E. Hedge, County Surveyor

James S. Swift
James S. Swift, IN LS 20200054

April 27, 2017

Jefferson Township

Section 31 T19N, R1W	Section 32 T19N, R1W
Section 6 T18N, R1W	Section 5 T18N, R1W

SECTION CORNER RECORD

BOONE COUNTY SURVEYOR'S OFFICE

NW 000-600

State Plane grid coordinates NAD83 (2011):
 North: 1745549.93 East: 3093131.39 (U.S. survey feet)
 Type of monument: Harrison, 4" disk 'Section Corner'
 Depth: Six inches below adjacent gravel road surface

Indiana tie card references:
 IN02_T19NR2W36_80 IN02_T19NR1W31_72
 IN02_T18NR2W01_08 IN02_T18NR1W06_00

CORNER WITNESS DETAIL

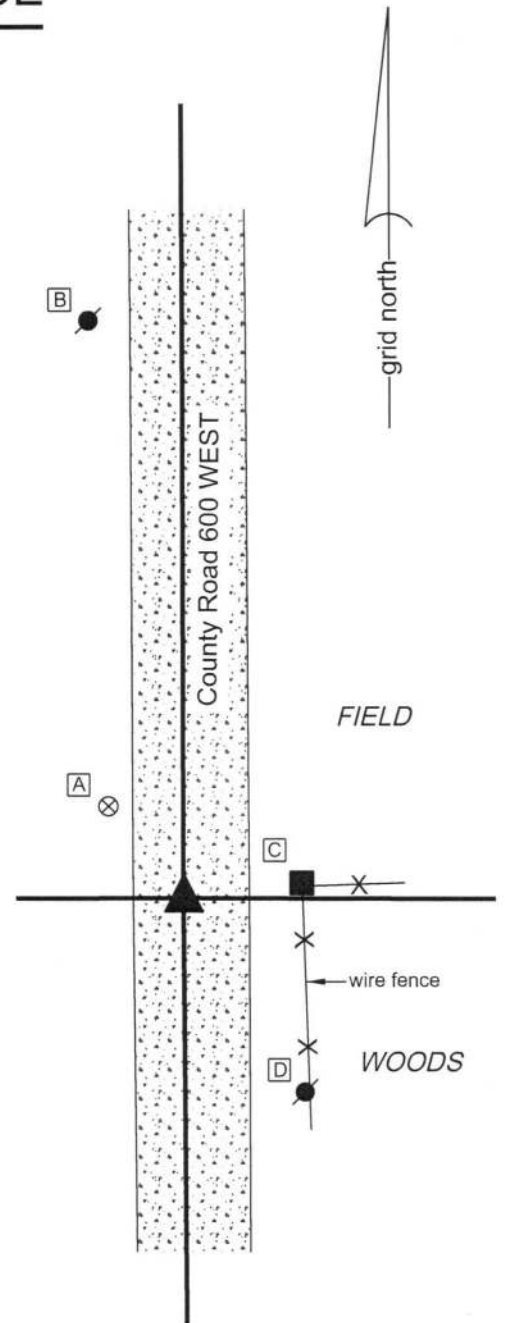
SCALE 1" = 30'

The Harrison monument was set over a stone found. No specific descriptions of this corner were found in the BCS Surveyor's Record beyond the original establishment of the corner as a wood post in 1819, though the corner is referenced as the terminal point for measurements in records of 1870, 1873, 1874, and 1880, indicating that some object was present at those times from which to measure. It is noted that the roadway of C.R. 600 West is shown as existing on the 1876 map of Boone County, hence the monument held as the corner during the previous surveys would have almost certainly been buried in the road.

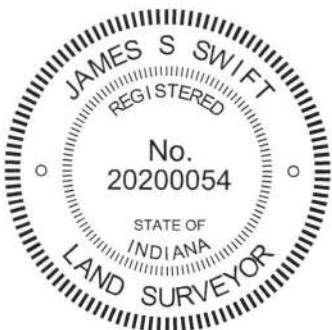
This corner was excavated on June 12, 2018. Prior to excavation, a section of 5/8 inch diameter rebar was found, the source of which is not known. The rebar was in the approximate center of the N-S roadway, in line with the north edge of a wood end post on the east side of the road. Excavation in the vicinity of the rebar revealed two stones found, one on top of the other, with the top of the top stone being 18 inches deep. The top stone was found to be 8 inches tall by 8 inches N-S by 4 inches E-W. The stone was triangular in shape, vertical and oriented N-S with a distinct high point. The stone was sitting on top of another stone which was flat and horizontal, being 10 inches N-S by 10 inches E-W by 4 inches thick. Both stones were embedded in the clay layer below the road bed. Discoloration of the clay was also observed along the west side of the lower stone. This discoloration appeared in the field to represent remnants of a wood stake. The two stones bore the distinct characteristics of monuments set to mark the corner, with the vertical upper stone oriented in cardinal directions and a distinct high point sitting over horizontal base stone. As noted above, the corner is mentioned in several records from 1870 to 1880. Comparison of the records from this period with evidence found in the field at numerous other corners throughout the county has yielded the observation that, if no monument was present, the surveyors of that era would determine a position for the corner and set a monument, typically a stone. However, if a stone were already present marking the corner, the surveyors may not mention the monument. It is believed they would hold its position, note the measurements which were tied to it and either make no mention of the existing monument, or, in some cases, note the corner to be marked by "a stone that was set."

The two stones were accepted as providing the best evidence of the original position of the corner and are believed to have been present as early as 1870. The position of the top of the top stone was held as marking the corner. The top stone was removed. The lower stone was left in place and a Harrison monument was set over it. The rebar, removed during excavation, had been 2.4 feet north and 0.4 foot west of the rebar. It is noted that the rebar fit generally with the evidence of the wood post on the east side of the road, but per the rationale described above, the found stones are considered the superior evidence of the original position of the corner.

This corner was originally established as a wood post in 1819.



- A - Boone County witness mark, flush, 18.4'
- B - E. edge, base of metal power pole 838-3441, 90.0'
- C - Mag nail set in W. side wood post, 2' a.g., 18.7'
- D - Mag nail set in W. side power pole, 2' a.g. 35.1'



Kenneth E. Hedge
 Kenneth E. Hedge, County Surveyor

James S. Swift
 James S. Swift, IN LS 20200054
 June 27, 2018

Jefferson Township

Section 36 T19N, R2W	Section 31 T19N, R1W
Section 1 T18N, R2W	Section 6 T18N, R1W

SECTION CORNER RECORD

BOONE COUNTY SURVEYOR'S OFFICE

NW 050-500

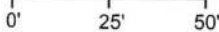
State Plane grid coordinates NAD83 (2011):
 North: 1748172.33 East: 3098344.25 (U.S. survey feet)

Type of monument: Harrison, 4" disk 'Section Corner'
 Depth: One inch below adjacent road surface

Indiana tie card references:
 IN02_T19NR1W31_44 IN02_T19NR1W32_36

CORNER WITNESS DETAIL

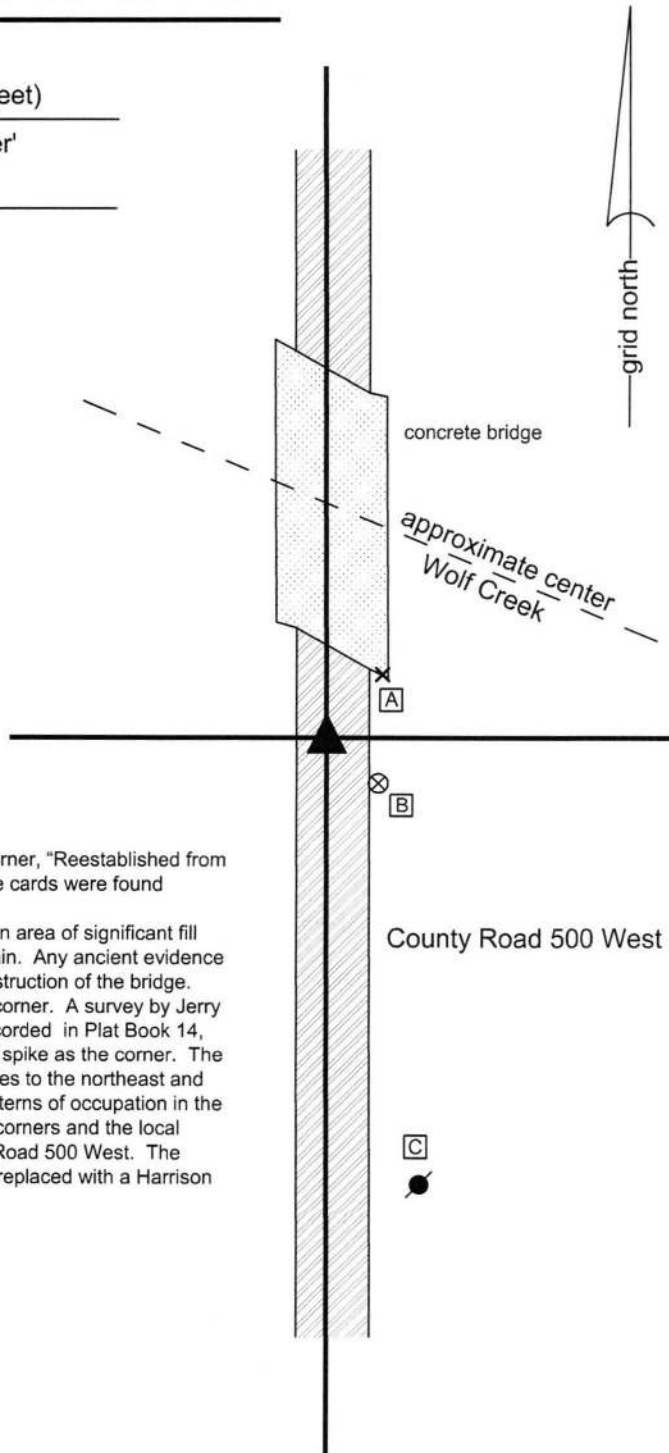
SCALE 1" = 50'



- A - "+" mark etched in base concrete wing wall, flush, 21.8'
- B - Boone County witness mark, flush, 17.8'
- C - Mag nail set in W. side power pole, 4' a.g., 117.3'

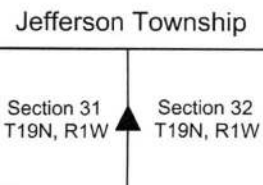
Boone County witness mark is a 3/8" diameter x 2' long rebar bearing a metal cap stamped "Boone County Witness Point."

The Harrison monument was set in place of a railroad spike found. A BCS record dated October 10, 1867 states, with respect to this corner, "Reestablished from Oak (down). Set rock 12, 7 1/2 marked + on top." No recent BCS tie cards were found referencing this corner. No significant excavation was performed at this corner as it falls in an area of significant fill on the southern approach to a bridge over the Wolf Creek Open Drain. Any ancient evidence of the corner would have been either destroyed or buried in the construction of the bridge. The plans for Bridge 108 dated April 5, 1965, do not reference the corner. A survey by Jerry L. Carter, being the Lane Minor Plat, certified March 4, 2004 and recorded in Plat Book 14, page 50, Boone County Recorder's Office, shows the found railroad spike as the corner. The railroad spike fits with the deed descriptions of the adjoining properties to the northeast and southeast, both as shown on the Carter plat and as observed by patterns of occupation in the field. The position of the railroad spike also fits well with proximate corners and the local evidence in the form of the existing north-south roadway of County Road 500 West. The railroad spike was held as marking the corner. It was removed and replaced with a Harrison monument on September 6, 2016. This corner was originally established as a wood post in 1822.



Kenneth E. Hedge
 Kenneth E. Hedge, County Surveyor

James S. Swift
 James S. Swift, IN LS 20200054
 March 23, 2017



SECTION CORNER RECORD

NW 050-600

BOONE COUNTY SURVEYOR'S OFFICE

State Plane grid coordinates NAD83 (2011):

Corner 1: North: 1748192.36 East: 3093123.21 (U.S. survey feet)

Corner 2: North: 1748177.14 East: 3093123.25 (U.S. survey feet)

Type of monument: Harrison, 4" disk 'Section Corner'

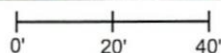
Depth: Six inches below adjacent gravel road surface

Indiana tie card references:

IN02_T19NR2W36_44 IN02_T19NR1W31_36

CORNER WITNESS DETAIL

SCALE 1" = 40'



- ① East Quarter Corner
Section 36
T 19 N, R 2 W
- ② West Quarter Corner
Section 31
T 18 N, R 1 W

Distance between monuments: 15.22'
Record distance: 15.18' (23 links)

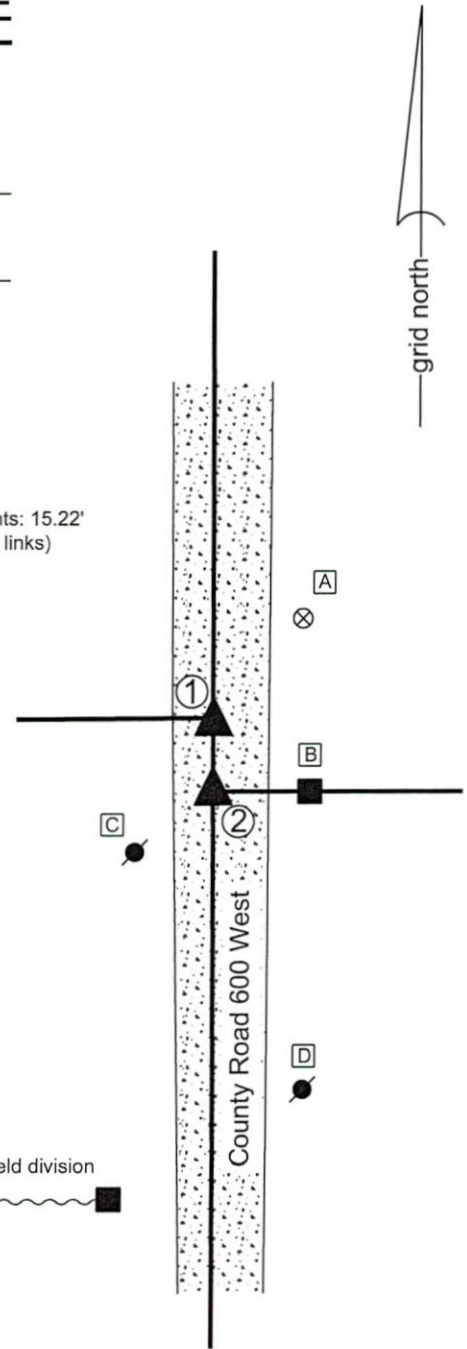
The Harrison monument at Corner 1 was set in place of a stone found. The Harrison monument at Corner 2 was set at a position calculated relative to Corner 1 and record references. A BCS record dated April 30, 1867 states, with respect to Corner 1, "Reestablished. Set Rock. Top One 8 1/2, 7, 4 marked + on top. Under one 6, 5 1/2, 2 1/2." A BCS record dated September 11, 1873 states, with respect to Corner 2, "23 links S. of D Sec. 36." This record makes no mention of a monument set or found at Corner 2 but does establish the offset between the two corners as the average of the original closing distance of 0 links at the southeast corner of section 36 and 46 links at the northeast corner of section 36.

An undated BCS tie card references Corner 1 but appears to graphically demonstrate Corner 2 (fence to the east). The tie card states "No stone."

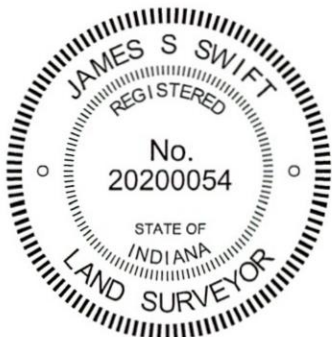
Both of these corners were excavated on September 13, 2018. Prior to excavation, a section of 5/8 inch rebar with a yellow cap (markings illegible) was found at the surface of the road, substantially disturbed, in the vicinity of Corner 2. No metal monuments were found in the vicinity of Corner 1. It is noted that the local evidence of the corners, in the form of an old wood post on the east side of the road, witnessed Corner 2. The only visible evidence of Corner 1 was the north-south roadway. Analysis of the relative positions of the rebar and the corner to the south (see Corner NW 000-600) indicated that the position of the wood post and rebar providing evidence of Corner 2 fit well with measurements reported in the 1873 record. Excavation centered on the found rebar revealed no further evidence of Corner 2. Excavation in search of Corner 1, at a point in the center of the roadway, 23 links north of the post and rebar, revealed a stone found at 9 inches deep. The stone was embedded in the clay layer below the road, vertical, and oriented in cardinal directions. The stone measured 14 inches tall by 14 inches N-S by 9 inches E-W. This stone does not appear to be either of the monuments described in the 1867 record but was clearly a stone set by humans in a purposeful manner, ostensibly to mark the corner. The position of the stone fit remarkably well with the available evidence of Corner 2, the reported 23 link offset, and the measurements reported in the 1873 record. The stone was accepted as the best available evidence of the corner. The stone was removed and replaced with a Harrison monument in the same position as the top, center of the stone as found.

The position of Corner 2 was established on the range line as defined by Corner 1 and Corner NW 000-600. Corner 2 was set at 23 links, with a scale factor indexed to the variations between the old records and current measurements. The specific position of Corner 2 was established at 15.22 feet south of Corner 1. This position fits well with the wood post on the east side of the road and is 0.5 foot north and 0.5 foot east of the position of the rebar found prior to excavation and removed during excavation.

Corner 1 was originally established as a wood post in 1819. Corner 2 is not an original federal corner.



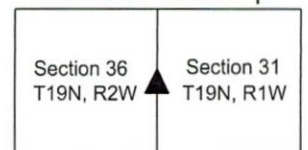
- A - Boone County witness mark, flush
27.8' to Corner 1, 40.4' to Corner 2
- B - Mag nail set in N. side wood post, 2' a.g.
25.0' to Corner 1, 20.4' to Corner 2
- C - Mag nail set in N. side power pole, 2' a.g.
77.9' TO Corner 1, 63.2' to Corner 2
- D - East edge, base of metal power pole
31.2' to Corner 1, 19.2' to Corner 2



Kenneth E. Hedge
Kenneth E. Hedge, County Surveyor

James S. Swift
James S. Swift, IN LS 20200054
September 19, 2018

Jefferson Township



SECTION CORNER RECORD

BOONE COUNTY SURVEYOR'S OFFICE

NW 100-500

State Plane grid coordinates NAD83 (2011):

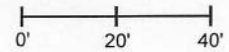
North: 1750807.99 East: 3098335.91 (U.S. survey feet)

Type of monument: Plug in monument box, INDOT Type B

Depth: Flush with adjacent road surface

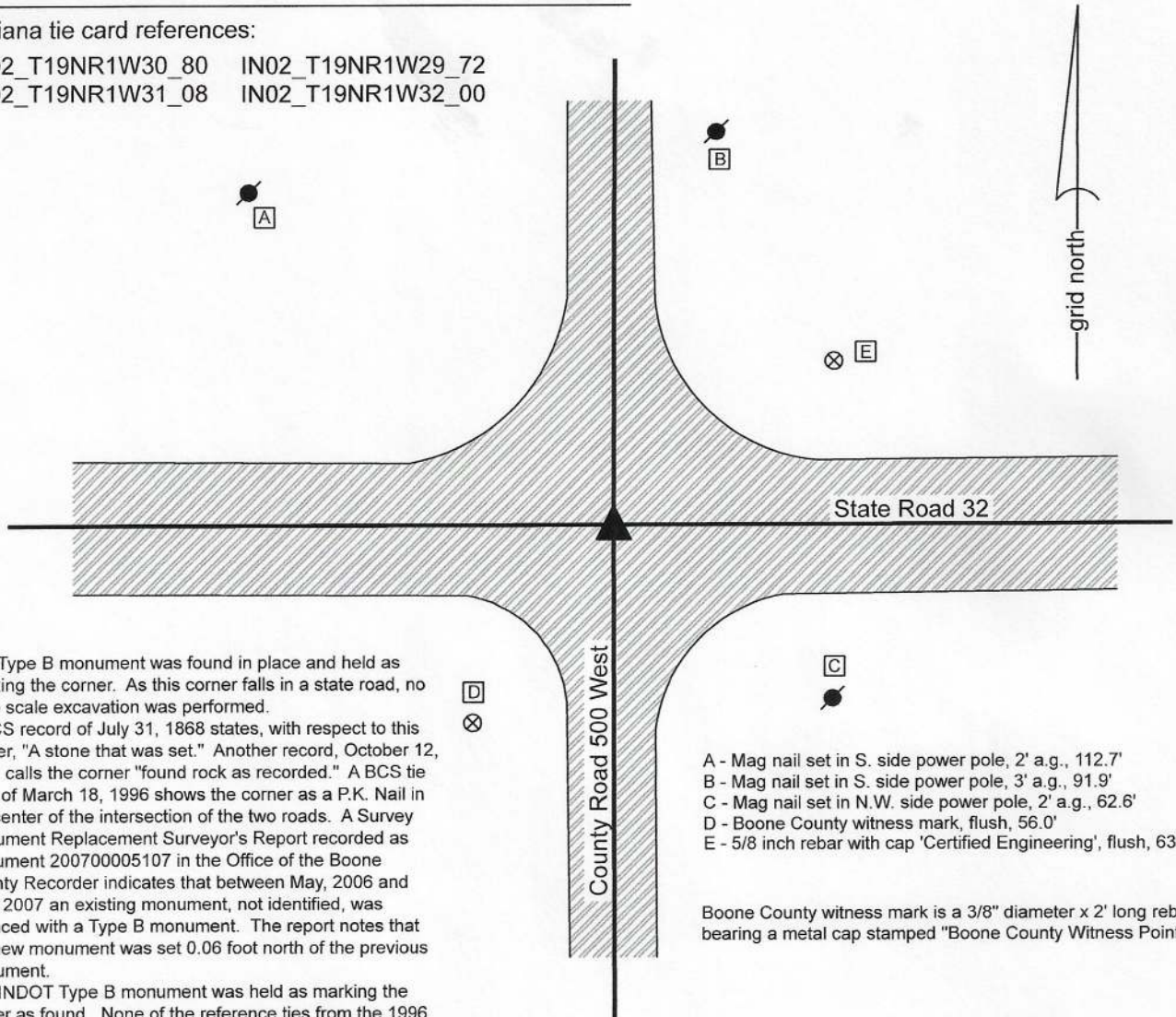
CORNER WITNESS DETAIL

SCALE 1" = 40'



Indiana tie card references:

IN02_T19NR1W30_80 IN02_T19NR1W29_72
 IN02_T19NR1W31_08 IN02_T19NR1W32_00



The Type B monument was found in place and held as marking the corner. As this corner falls in a state road, no large scale excavation was performed.

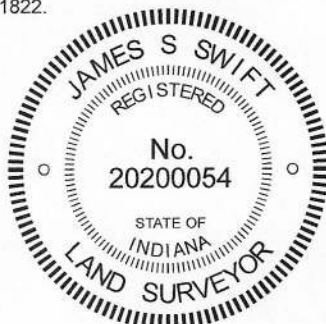
A BCS record of July 31, 1868 states, with respect to this corner, "A stone that was set." Another record, October 12, 1912 calls the corner "found rock as recorded." A BCS tie card of March 18, 1996 shows the corner as a P.K. Nail in the center of the intersection of the two roads. A Survey Monument Replacement Surveyor's Report recorded as Instrument 200700005107 in the Office of the Boone County Recorder indicates that between May, 2006 and May, 2007 an existing monument, not identified, was replaced with a Type B monument. The report notes that the new monument was set 0.06 foot north of the previous monument.

The INDOT Type B monument was held as marking the corner as found. None of the reference ties from the 1996 tie card were found. It is assumed, but not proven, that the Type B is in the same position as the previously held PK Nail.

This corner was originally established as a wood post in 1822.

- A - Mag nail set in S. side power pole, 2' a.g., 112.7'
- B - Mag nail set in S. side power pole, 3' a.g., 91.9'
- C - Mag nail set in N.W. side power pole, 2' a.g., 62.6'
- D - Boone County witness mark, flush, 56.0'
- E - 5/8 inch rebar with cap 'Certified Engineering', flush, 63.1'

Boone County witness mark is a 3/8" diameter x 2' long rebar bearing a metal cap stamped "Boone County Witness Point."



Kenneth E. Hedge
 Kenneth E. Hedge, County Surveyor

James S. Swift
 James S. Swift, IN LS 20200054
 May 11, 2020

Jefferson Township

Section 30 T19N, R1W	Section 29 T19N, R1W
Section 31 T19N, R1W	Section 32 T19N, R1W

SECTION CORNER RECORD

BOONE COUNTY SURVEYOR'S OFFICE

NW 100-550

State Plane grid coordinates NAD83 (2011):
 North: 1750803.23 East: 3095695.08 (U.S. survey feet)

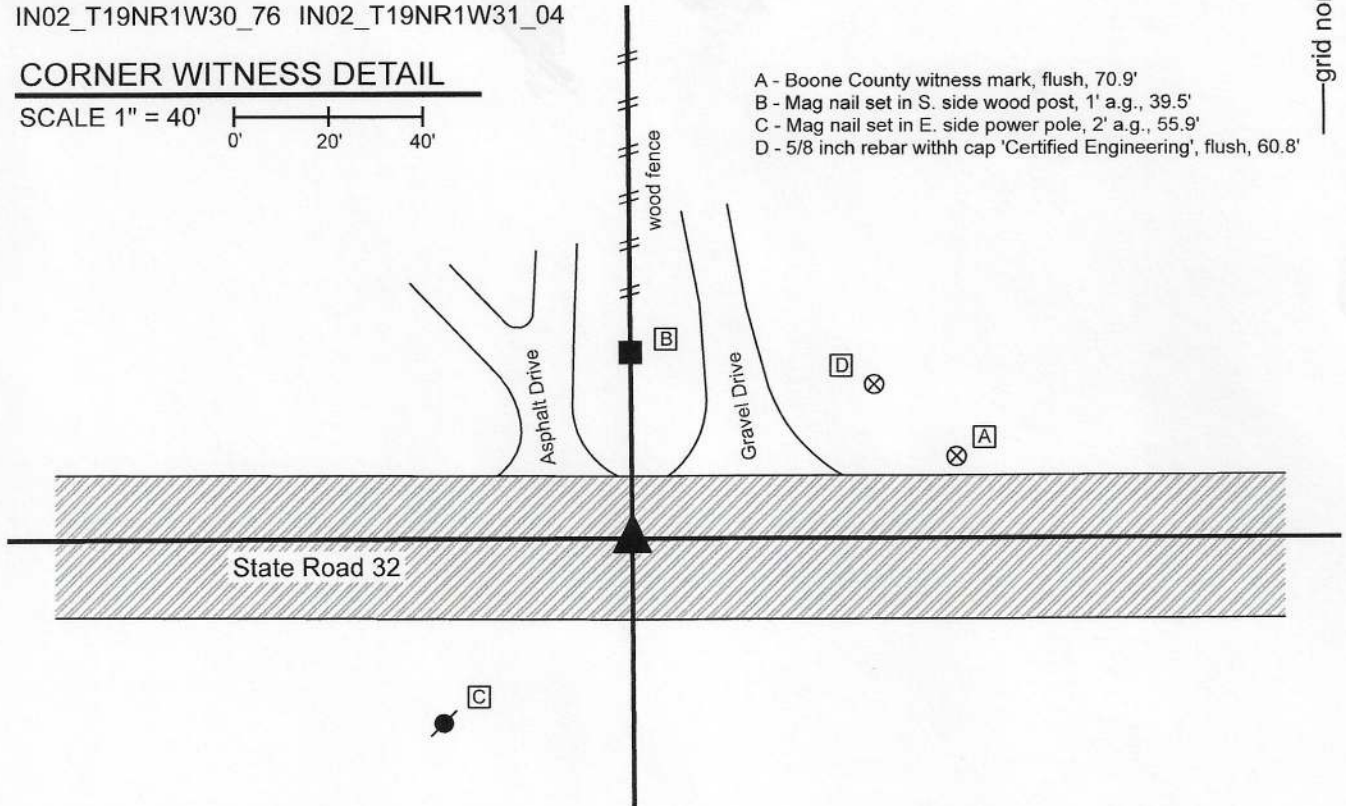
Type of monument: plug in monument box, INDOT Type B
 Depth: flush with road surface

Indiana tie card references:
 IN02_T19NR1W30_76 IN02_T19NR1W31_04

CORNER WITNESS DETAIL

SCALE 1" = 40'

- A - Boone County witness mark, flush, 70.9'
- B - Mag nail set in S. side wood post, 1' a.g., 39.5'
- C - Mag nail set in E. side power pole, 2' a.g., 55.9'
- D - 5/8 inch rebar with cap 'Certified Engineering', flush, 60.8'



The Type B monument was found in place and held as marking the corner. As this corner falls in a state road, no large scale excavation was performed.

ABCS record of March 9, 1880 states, with respect to this corner, "Reestd. Set rock 40x15x20 plus on top." BCS tie cards of 1994, 1995 and 1996 show the corner as a P.K. Nail in the approximate center of the state road, in-line with an occupation line to the north. A Survey Monument Replacement Surveyor's Report recorded as Instrument 200700005107 in the Office of the Boone County Recorder indicates that between May, 2006 and May, 2007 an existing monument, not identified, was replaced with a Type B monument. The report notes that the new monument was set 0.09 foot northwest of the previous monument.

The INDOT Type B monument was held as marking the corner as found. The position of the corner agrees with local evidence in the form of being at the the center of the east-west road and being in-line wih a wood post and fence to the north. This appears to agree as well with the 1912 records. This corner was originally established as a wood post in 1822.



Kenneth E. Hedge
 Kenneth E. Hedge, County Surveyor

James S. Swift
 James S. Swift, IN LS 20200054
 May 11, 2020

Jefferson
 Township

Section 30
 T19N, R1W

Section 31
 T19N, R1W

SECTION CORNER RECORD

NW 100-600

BOONE COUNTY SURVEYOR'S OFFICE

State Plane grid coordinates NAD83 (2011) U.S. Survey feet:

Corner 1: North: 1750828.27 East: 3093116.03

Corner 2: North: 1750797.91 East: 3093116.12

Corner 1: Mag nail with washer, flush

Corner 2: INDOT Type B Monument

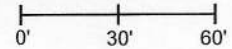
Indiana tie card references:

IN02_T19NR2W25_80 IN02_T19NR1W30_72

IN02_T19NR2W36_08 IN02_T19NR1W31_00

CORNER WITNESS DETAIL

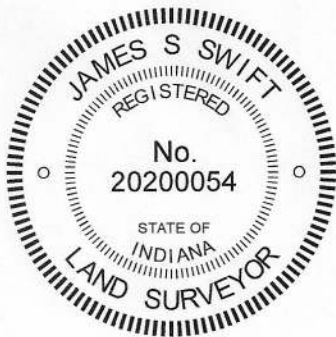
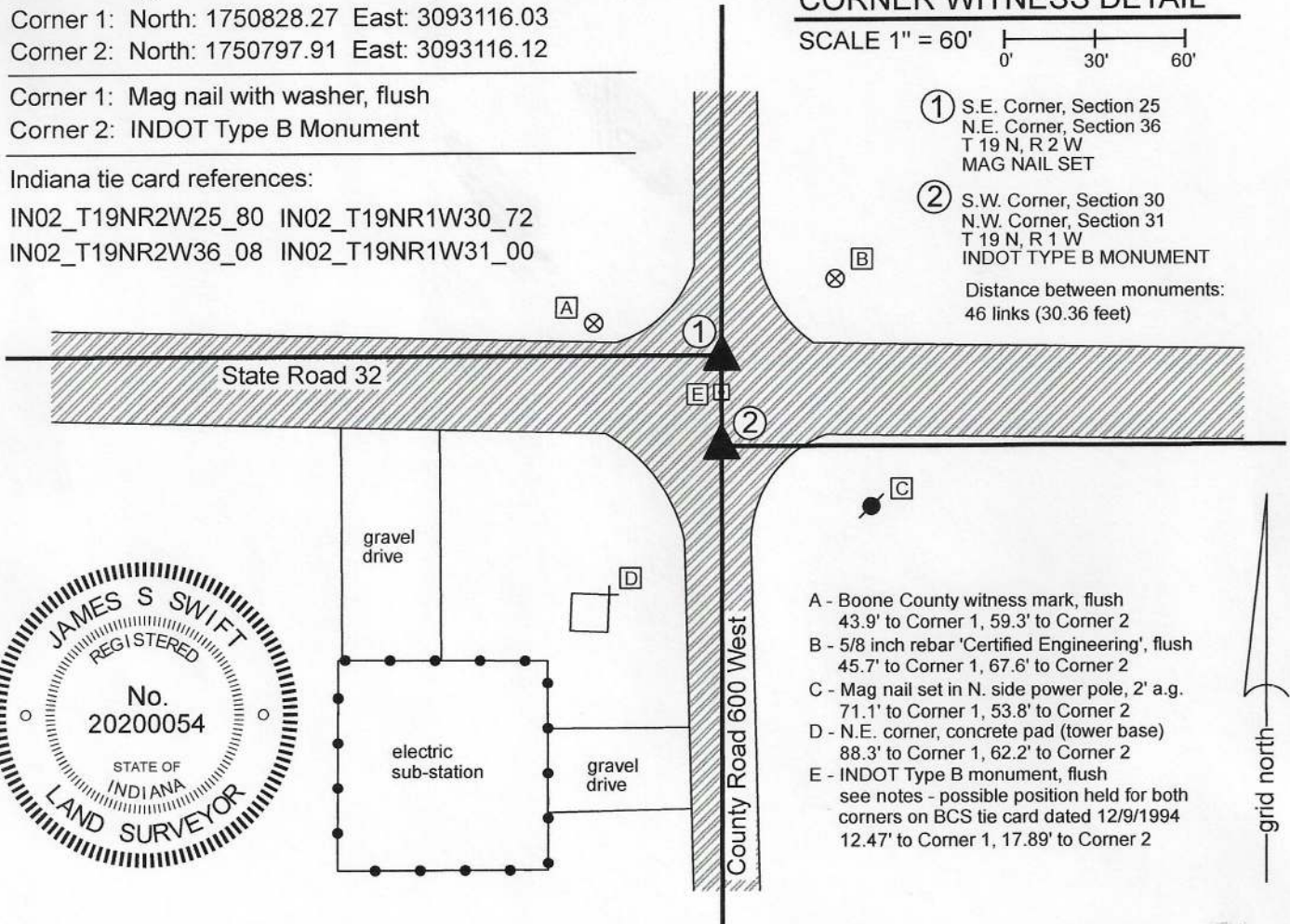
SCALE 1" = 60'



① S.E. Corner, Section 25
N.E. Corner, Section 36
T 19 N, R 2 W
MAG NAIL SET

② S.W. Corner, Section 30
N.W. Corner, Section 31
T 19 N, R 1 W
INDOT TYPE B MONUMENT

Distance between monuments:
46 links (30.36 feet)



- A - Boone County witness mark, flush
43.9' to Corner 1, 59.3' to Corner 2
- B - 5/8 inch rebar 'Certified Engineering', flush
45.7' to Corner 1, 67.6' to Corner 2
- C - Mag nail set in N. side power pole, 2' a.g.
71.1' to Corner 1, 53.8' to Corner 2
- D - N.E. corner, concrete pad (tower base)
88.3' to Corner 1, 62.2' to Corner 2
- E - INDOT Type B monument, flush
see notes - possible position held for both
corners on BCS tie card dated 12/9/1994
12.47' to Corner 1, 17.89' to Corner 2

The INDOT Type B monument was found and held as marking Corner 2. The Mag nail with washer "Boone County Surveyor" marking Corner 1 was set at the record federal closing distance of 46 links (30.36 feet) northerly of Corner 2.

The original federal notes of 1822 show the closing corner (Corner 2) as being 46 links south of the standard corner (Corner 1). A BCS record of September 4, 1865 states, with respect to Corner 1 and referencing Corner 2, "Reestablished by measuring the lap 46 links from the corner of Sects. 30 & 31. Set a Rock 12, 11, 7 marked." No specific descriptions of Corner 2 were found in the BCS Surveyor's Record beyond the original establishment of the corner in 1822. A BCS tie card dated December 9, 1994 shows Corner 1 as a P.K. Nail with washer. The sketch does not appear to take into account the 46 links offset at Corner 1 and demonstrates the corner to be at the center of the intersection of the two roads. Although the tie card states that the specific corner is the standard corner (Corner 1), the sketch demonstrates the section line bearing east and west from the corner with no offset.

Two INDOT Type B monuments were found at this intersection. Both monuments are referenced on a Survey Monument Replacement Surveyor's Report recorded as Instrument 200700005107 in the Office of the Boone County Recorder. The monuments are separated by 17.9 feet, significantly less than the original federal offset of 46 links (30.36 feet) which was confirmed by the 1865 record. Analysis of the relative positions of the found Type B monuments with adjacent corners in all cardinal directions, taking into account original federal dimensions and dimensions shown in the 1865 record clearly indicates that the southerly of the two monuments is in a reasonable position expected for Corner 2, but the northerly of the two monuments is south of the expected position for Corner 1. No uncertainty exists as to the offset, being 46 links or 30.36 feet.

Distance ties shown on the 1994 BCS tie card indicate that the northerly of the Type B monuments was likely set in the same position as the P.K. Nail shown on the 1994 tie card. As noted above, this tie card does not take into account the 46 links federal offset on the range line, treating the two separate corners as a common corner and is clearly in error on that count. No excavation was performed at these corners, as they both fall within the state highway. The southerly of the two Type B monuments was held as marking Corner 2. Corner 1 was established at 30.36 feet north thereof on the prolongation of the line connecting the east quarter corner of section 36 (see BCS Corner NW 050-600) with the monument held as marking Corner 2. A mag nail with washer stamped 'Boone County Surveyor' was set at this position on June 17, 2020. The Type B monument previously held as marking this corner is 12.5 feet south. Another mag nail, unknown origin, was found 16.1 feet north of Corner 2.

Corner 1 was originally established as a wood post in 1819. Corner 2 was established as a wood post in 1822.

Jefferson Township

Section 25 T19N, R2W	Section 30 T19N, R1W
Section 36 T19N, R2W	Section 31 T19N, R1W

Kenneth E. Hedge
Kenneth E. Hedge, County Surveyor

James S. Swift
James S. Swift, IN LS 20200054 August 5, 2020