

# SECTION CORNER RECORD

SW 500-1100

## BOONE COUNTY SURVEYOR'S OFFICE

State Plane grid coordinates NAD83 (2011):

North: 1718840.52 East: 3066755.32 (U.S. survey feet)

Type of monument: Harrison, 4" disk 'Section Corner'

Depth: One inch below adjacent road surface

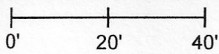
Indiana tie card references:

IN02\_T18NR2W29\_72 IN02\_T18NR2W30\_80

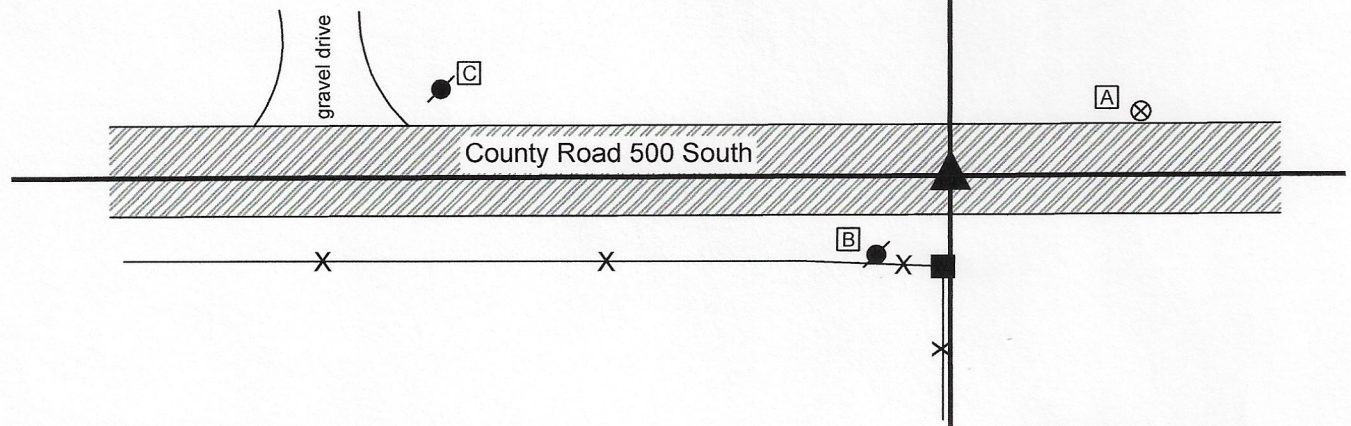
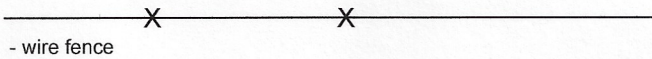
IN02\_T18NR2W31\_08 IN02\_T18NR2W32\_00

### CORNER WITNESS DETAIL

SCALE 1" = 40'



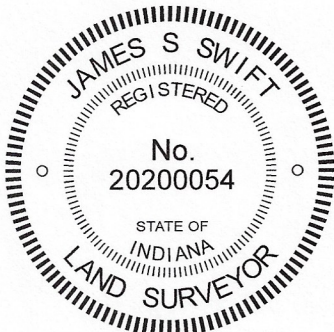
- A - Boone County witness mark, flush, 41.5'
- B - Mag nail set in N. side power pole, 2' a.g., 22.4'
- C - Mag nail set in E. side power pole, 2' a.g., 106.9'



The Harrison monument was set in place of a stone found.

A BCS record of September 19, 1895 states, with respect to this corner, "Set Rock 24x12x8." No recent BCS tie cards were found referencing this corner.

Excavation was performed at this corner on October 21, 2020. Prior to excavation, a rebar was found at the surface of the road, generally in-line with a fence to the south. Excavation revealed a stone found at 3 inches deep, slightly southeast of the found rebar. The stone appeared to be vertical but was broken as found, being in several pieces. The top of the stone had been embedded in the pavement layer of the road and most of the stone was in the fill material of the road bed. The stone was removed, measured, and found to be 12 inches north-south by 8 inches east-west by 15 inches tall. The bottom four inches of the stone had been embedded in the clay layer below the road bed. The stone matched two of the record dimensions but not the third. As noted above, the stone was broken as found. It is possible that a significant portion of the top of the rock had been broken previously, accounting for the fact that it was 15 inches tall, not 24 inches, per the 1895 record. The stone was held as marking the corner. A Harrison monument was set in place of the top, center of the stone as found. Both the stone and rebar were removed during excavation. The rebar had been 0.6 foot north and 1.2 foot west of the top, center of the stone.



*Kenneth E. Hedge*  
Kenneth E. Hedge, County Surveyor

*James S. Swift*  
James S. Swift, IN LS 20200054  
October 28, 2020

Jackson Township

Section 30 T18N, R2W	Section 29 T18N, R2W
Section 31 T18N, R2W	Section 32 T18N, R2W



# SECTION CORNER RECORD

SW 500-1150

## BOONE COUNTY SURVEYOR'S OFFICE

State Plane grid coordinates NAD83 (2011):

North: 1718834.61 East: 3064114.57 (U.S. survey feet)

Type of monument: Harrison, 4" disk 'Section Corner'

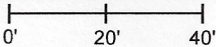
Depth: One inch below adjacent road surface

Indiana tie card references:

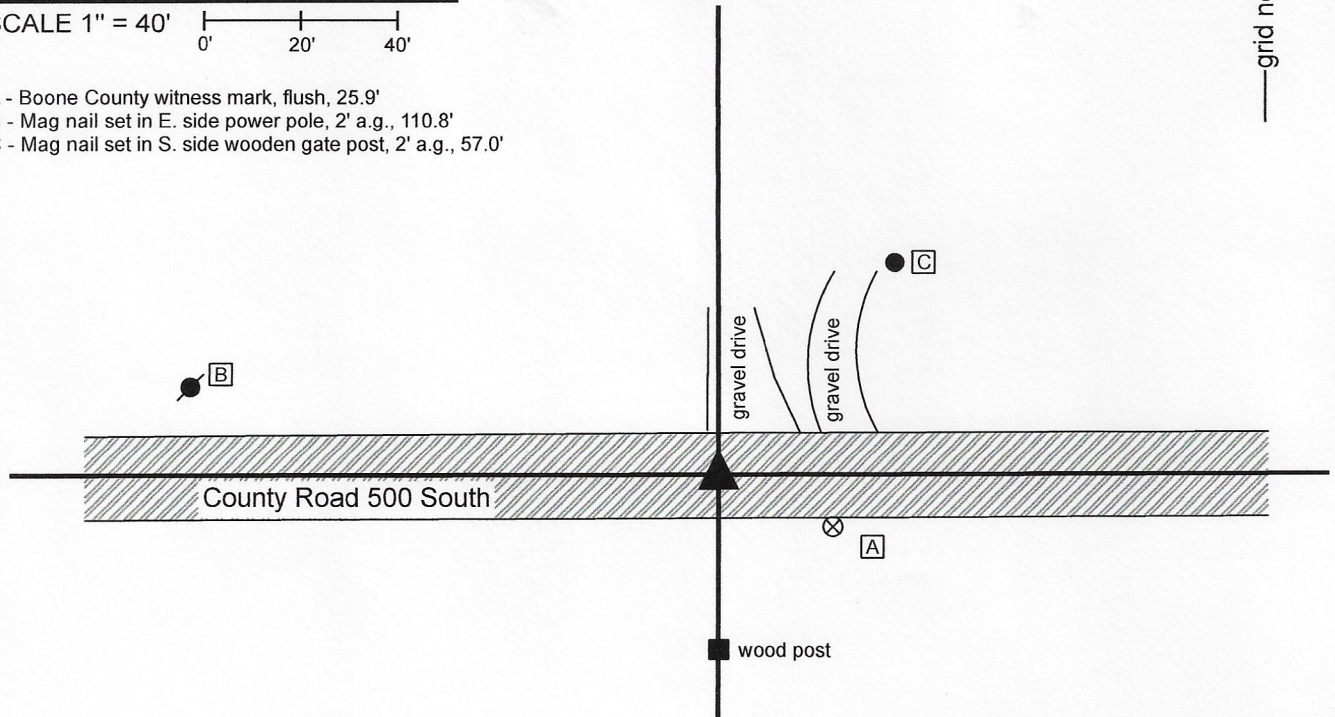
IN02\_T18NR2W30\_76 IN02\_T18NR2W31\_04

### CORNER WITNESS DETAIL

SCALE 1" = 40'



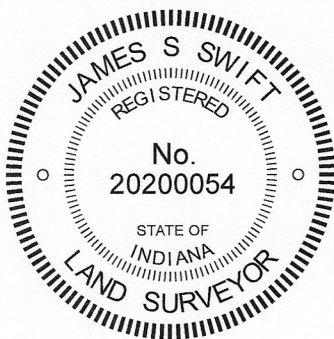
- A - Boone County witness mark, flush, 25.9'
- B - Mag nail set in E. side power pole, 2' a.g., 110.8'
- C - Mag nail set in S. side wooden gate post, 2' a.g., 57.0'




The Harrison monument was set over a stone found.

A BCS record dated August 27, 1885 states, with respect to this corner, "Reestablished. Set Rock 12x10x8 ... Corner is sharp point on east side" No recent BCS tie cards were found referencing this corner.

Excavation was performed at this corner on October 21, 2020. Prior to excavation, a railroad spike was found in the approximate center of County Road 500 South, in-line with a post on the south side of the road. This monument was set by this surveyor (Swift) as part of a survey in 2004, per the available visible evidence of the road and post to the south. Excavation revealed the stone described in the 1885 record at 14 inches deep, slightly north of the railroad spike. The top of the stone was broken off during excavation. The stone measured 8 inches E-W by 10 inches N-S. The height of the stone was measured as 9 inches along the south side. The E-W and N-S dimensions matched the 1885 record. The height did not, but as noted, the stone had been broken during excavation and appeared that it may have also been broken previously. The stone was embedded in the clay layer below the road, protruding approximately 6 inches into the bottom of the road bed. No specific marks were observed on the stone, as expected given the broken top. The sharp point on the east side was also not observed, presumed to have been broken off as well. The stone was held as marking the corner. It was left in place and a Harrison monument was set over the middle of the east side of the stone, in accordance with the reference to the east side in the 1885 record. The railroad spike, removed during excavation, had been 0.75 foot south and 0.2 foot east of the east side of the stone. This corner was originally established as a wood post in 1820.



  
Kenneth E. Hedge, County Surveyor

  
James S. Swift, IN LS 20200054  
October 28, 2020

Jackson Township

Section 30  
T18N, R2W

Section 31  
T18N, R2W



# SECTION CORNER RECORD

SW 500-1200

## BOONE COUNTY SURVEYOR'S OFFICE

State Plane grid coordinates NAD83 (2011):

Corner 1: North: 1718881.92 East: 3061464.10 (U.S. survey feet)

Corner 2: North: 1718829.19 East: 3061464.54 (U.S. survey feet)

Corner 1: 5/8 inch diameter rebar with aluminum cap stamped 'Montgomery County Surveyor' one inch deep

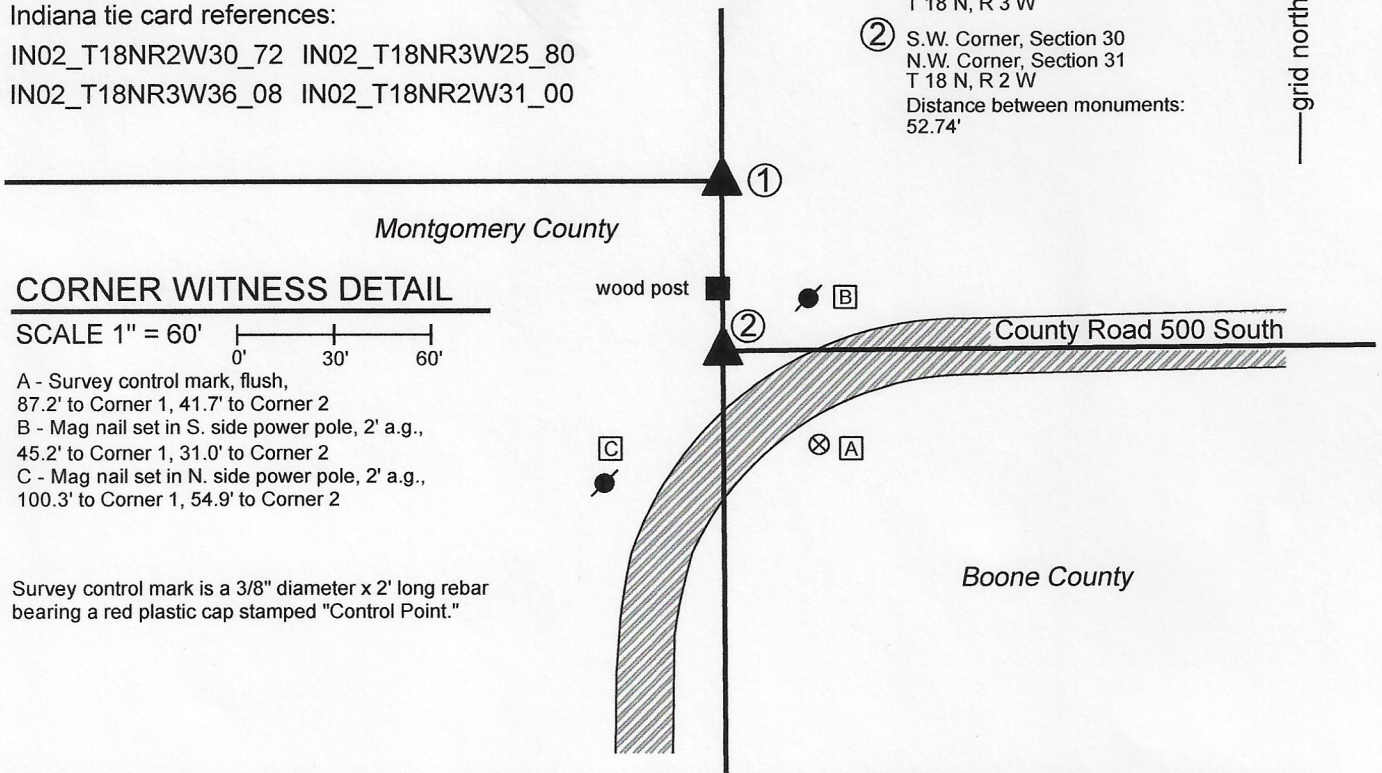
Corner 2: 5/8 inch diameter rebar with aluminum cap stamped 'Boone County Surveyor' flush, 24 inches long

Indiana tie card references:

IN02\_T18NR2W30\_72 IN02\_T18NR3W25\_80

IN02\_T18NR3W36\_08 IN02\_T18NR2W31\_00

- ① S.E. Corner, Section 25  
N.E. Corner, Section 36  
T 18 N, R 3 W
- ② S.W. Corner, Section 30  
N.W. Corner, Section 31  
T 18 N, R 2 W  
Distance between monuments:  
52.74'



### CORNER WITNESS DETAIL

SCALE 1" = 60'

- A - Survey control mark, flush, 87.2' to Corner 1, 41.7' to Corner 2
- B - Mag nail set in S. side power pole, 2' a.g., 45.2' to Corner 1, 31.0' to Corner 2
- C - Mag nail set in N. side power pole, 2' a.g., 100.3' to Corner 1, 54.9' to Corner 2

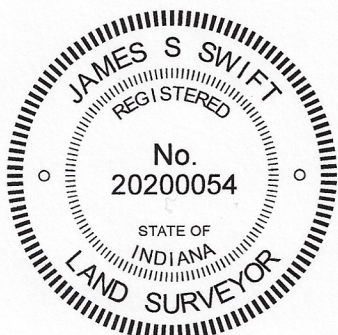
Survey control mark is a 3/8" diameter x 2' long rebar bearing a red plastic cap stamped "Control Point."

The 5/8 inch diameter rebar with metal cap was set on the range line as defined by adjacent Montgomery County corners at the westerly prolongation of the center of County Road 500 South.

No specific descriptions of this corner were found in the BCS Surveyor's Record beyond the original establishment of the corner as a wood post in 1820. No recent BCS tie cards were found referencing the corner. A Section Corner Dossier provided by the Office of the Montgomery County Surveyor shows the adjacent standard corner as being set in-line with wood post, at the record range line jog north of the center of County Road 500 North. This corner falls amidst numerous buried utility lines. No excavation was performed due to the presence of phone and fiber optic lines in the immediate vicinity of the corner, as marked by IUPPS. The specific position of the corner was established on the range line as defined by the Montgomery County rebar at the standard corner and a Montgomery County rebar at the east quarter corner of section 36, Township 18 North, Range 3 West. It is noted that the wood post on the north side of the road falls approximately 1 foot west of the line defined by the Montgomery County monuments. No explanation is offered for this. It is also noted that the position of the corner appears to be approximately 3 feet further south than the position held when the standard corner was established by Montgomery County. It is not clear why the corner would have been established further north, as the center of County Road 500 South is quite straight and extends to the position held hereon, based on GPS positions of the center of the road at numerous points between the quarter corner 1/2 mile east and the subject corner. The rebar with metal cap was set at the corner on November 6, 2020.

Walnut Township Montgomery County	Jackson Township Boone County
--------------------------------------	----------------------------------

Section 25 T18N, R3W	Section 30 T18N, R2W
Section 36 T18N, R3W	Section 31 T18N, R2W



*Kenneth E. Hedge*  
Kenneth E. Hedge, County Surveyor

*James S. Swift*  
James S. Swift, IN LS 20200054  
November 18, 2020

# SECTION CORNER RECORD

SW 600-1100

## BOONE COUNTY SURVEYOR'S OFFICE

State Plane grid coordinates NAD83 (2011):

Corner 1: North: 1713571.45 East: 3066759.63 (U.S. survey feet)

Corner 2: North: 1713571.24 East: 3066834.21 (U.S. survey feet)

Type of monument: Harrison, 4" disk 'Section Corner'

Depth: Six inches below adjacent road surface

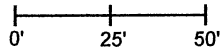
Indiana tie card references:

IN02\_T18NR2W32\_72 IN02\_T18NR2W31\_80

IN02\_T17NR2W06\_08 IN02\_T17NR2W05\_00

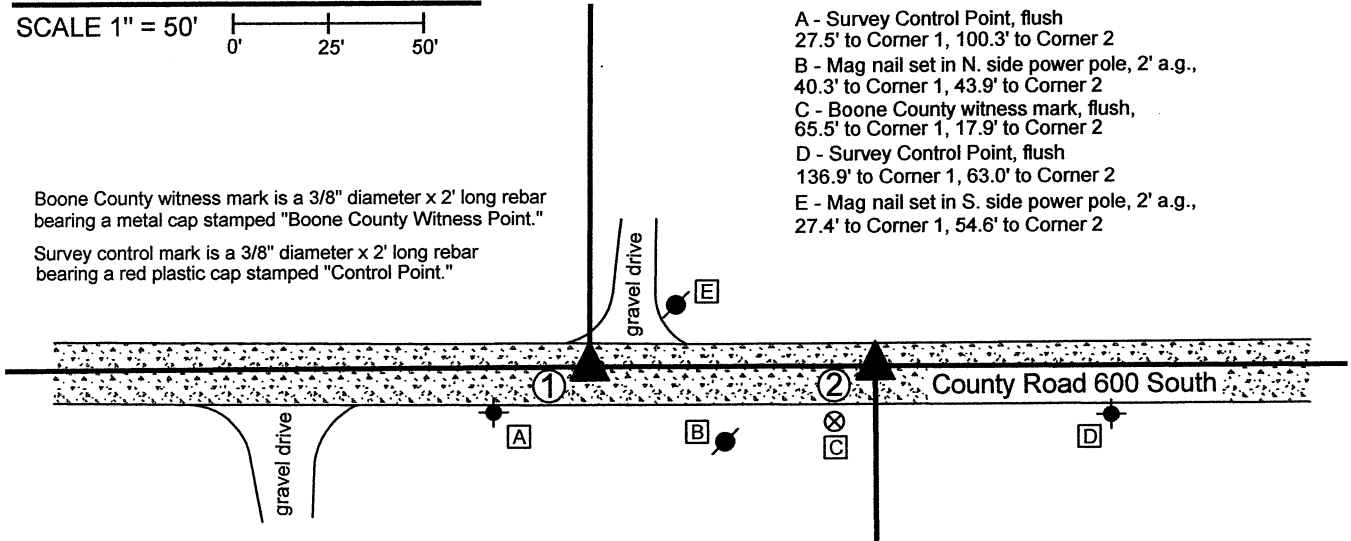
### CORNER WITNESS DETAIL

SCALE 1" = 50'



Boone County witness mark is a 3/8" diameter x 2' long rebar bearing a metal cap stamped "Boone County Witness Point."

Survey control mark is a 3/8" diameter x 2' long rebar bearing a red plastic cap stamped "Control Point."



① S.E. Corner, Section 31  
S.W. Corner, Section 32  
T 18 N, R 2 W  
Harrison Monument Set

② N.E. Corner, Section 6  
N.W. Corner, Section 5  
T 17 N, R 2 W  
Harrison Monument Set

Distance between monuments:  
74.58' = 113 links



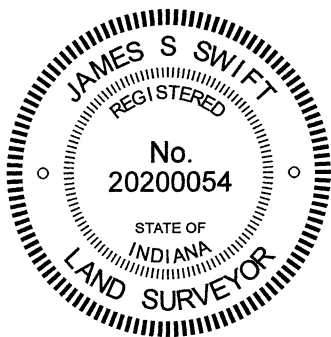
- A - Survey Control Point, flush  
27.5' to Corner 1, 100.3' to Corner 2
- B - Mag nail set in N. side power pole, 2' a.g.,  
40.3' to Corner 1, 43.9' to Corner 2
- C - Boone County witness mark, flush,  
65.5' to Corner 1, 17.9' to Corner 2
- D - Survey Control Point, flush  
136.9' to Corner 1, 63.0' to Corner 2
- E - Mag nail set in S. side power pole, 2' a.g.,  
27.4' to Corner 1, 54.6' to Corner 2

The Harrison monument at Corner 2 was set in place of a stone found. The Harrison monument at Corner 1 was set 113 links west of the stone found at Corner 2. No specific descriptions of Corner 1 were found in the Boone County Surveyor's Record beyond the original establishment of the corner as a wood post in 1819. A BCS record of December 14-15, 1870 states, with respect to Corner 2, "Reestablished. Set a Rock. 14.10.9 marked +." It is noted that the original federal field notes call for a closing offset of 113 links East for these corners.

A BCS tie card dated January 19, 1994 shows Corner 1 as a rebar and Corner 2 as a 1/2-inch rebar at the federal closing distance of 74.58 feet (113 links) apart. Corner 1 is shown in-line with a post on the north side of the road.

These corners were both excavated on March 19, 2021. Prior to excavation, the rebars shown on the 1994 tie card were found, slightly disturbed. Excavation at Corner 1 did not reveal further evidence of the corner. Excavation at Corner 2 revealed a large stone found at 6 inches deep in the road, slightly northwest of the 1/2-inch rebar referenced in the 1994 tie card. The top of the stone, as found was 18 inches E-W by 16 inches N-S. The stone was removed from the road and found to be, in full measure, 26 inches tall by 24 inches E-W by 16 inches N-S. The stone was fully embedded in the clay layer below the road bed, was vertical and oriented in cardinal directions. No specific marks were observed on the stone. This is not the monument referenced in the 1870 BCS record but is clearly a monument set with the purpose of marking the corner. The top, center of the stone was held as the specific position of Corner 2. The stone was removed and replaced with a Harrison monument in the same position on March 19, 2021. The position of Corner 1 was established on the westerly prolongation of the line connecting Corner 2 with a Harrison monument marking the standard corner 1/2 mile east (see BCS Corner SW 600-1050) at the record federal offset of 113 links or 74.58 feet. A Harrison monument was set at this position on April 19, 2021. It is noted that this position falls in-line with the existing occupation line to the north, which is trees with fragments of fence.

With respect to the monuments found prior to excavation and called in the 1994 tie card, the rebars (removed during excavation) had been 2.5 feet south and 2.5 feet east of the respective positions marked with Harrison monuments.



*Kenneth E. Hedge*  
Kenneth E. Hedge, County Surveyor

*James S. Swift*  
James S. Swift, IN LS 20200054  
April 21, 2021

Jackson Township

Section 31 T18N, R2W	Section 32 T18N, R2W
Section 6 T17N, R2W	Section 5 T17N, R2W