

SECTION CORNER RECORD

BOONE COUNTY SURVEYOR'S OFFICE

NW 700-1200

State Plane grid coordinates NAD83 (2011):

North: 1782772.12 East: 3061108.91 (U.S. survey feet)

Type of monument: Iron pin in concrete

Depth: Four inches below adjacent road surface

Indiana tie card references:

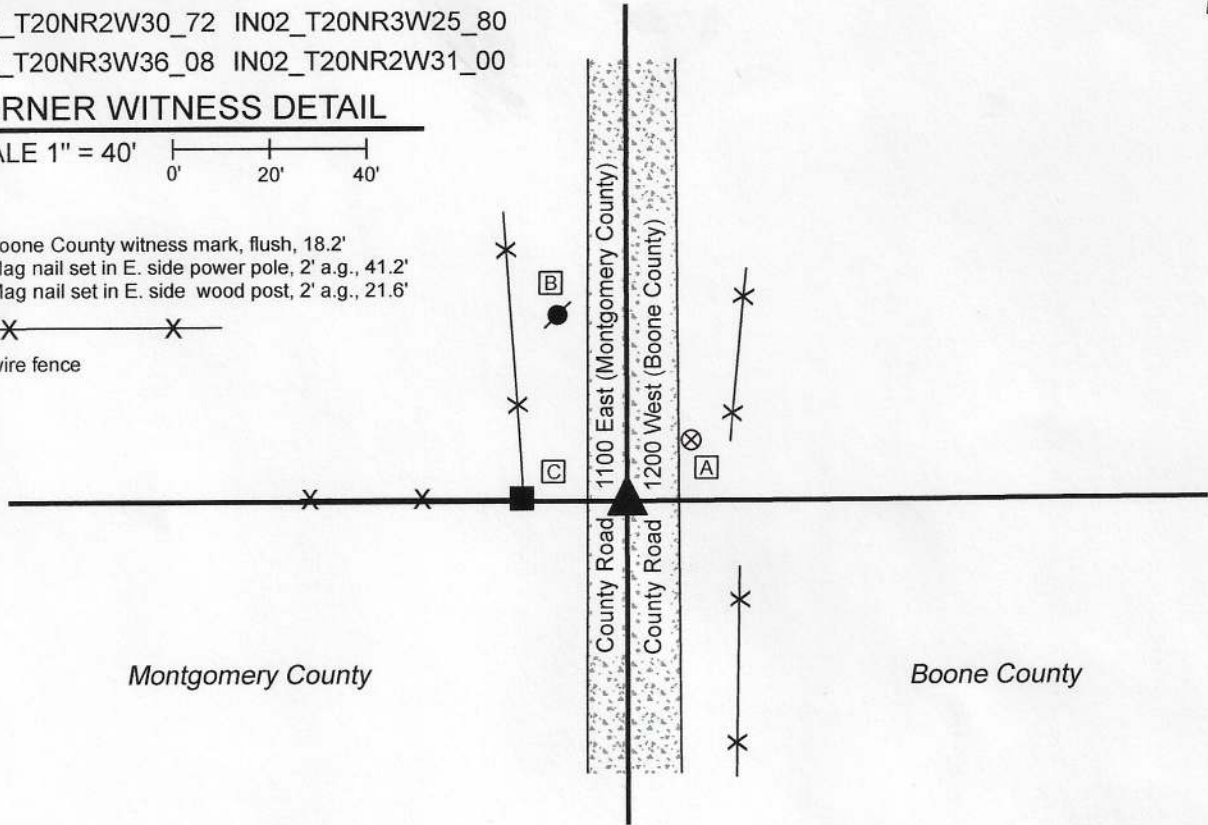
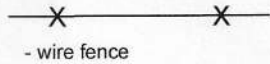
IN02_T20NR2W30_72 IN02_T20NR3W25_80

IN02_T20NR3W36_08 IN02_T20NR2W31_00

CORNER WITNESS DETAIL

SCALE 1" = 40'

- A - Boone County witness mark, flush, 18.2'
- B - Mag nail set in E. side power pole, 2' a.g., 41.2'
- C - Mag nail set in E. side wood post, 2' a.g., 21.6'

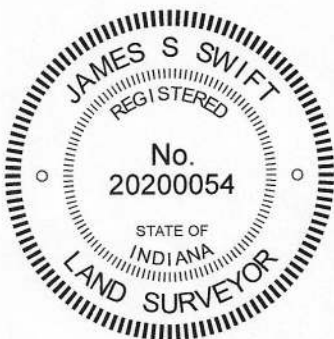


The iron pin in concrete was found and held as marking the corner.

No specific descriptions of this corner were found in the BCS Surveyor's Record beyond the original establishment of the corner as a wood post in 1819 and subsequent holding of the corner in 1822.

The iron pin in concrete is shown as marking the corner on a Section Corner Dossier provided by the Office of the Montgomery County Surveyor dated March 13, 2011. This document references a previous record of July 29, 1985 which shows a stone found at the corner and an additional record of July 27, 1989 which shows the stone as having been replaced by an iron pin in concrete, evidently during a bridge improvement project. The Section Corner Dossier states that excavation was performed in 2011 but no additional subsurface monuments were found. It is accepted that the iron pin in concrete replaced the stone found and held as marking the corner in 1985. The monument was left in place, as found.

It is noted that, though this corner is on a range line, there is no offset and the corners for Montgomery and Boone Counties represent a common corner. This is due to the presence of the east line of the Thorntown Reserve to the east and the fact that the federal subdivision survey of T20N, R2W in 1822 held the standard corner and surveyed east from that corner.



Kenneth E. Hedge
 Kenneth E. Hedge, County Surveyor

James S. Swift
 James S. Swift, IN LS 20200054
 August 19, 2020

Sugar Creek Township Montgomery County Sugar Creek Township Boone County

Section 25 T20N, R3W	Section 30 T20N, R2W
Section 36 T20N, R3W	Section 31 T20N, R2W

SECTION CORNER RECORD

NW 750-1100

BOONE COUNTY SURVEYOR'S OFFICE

State Plane grid coordinates NAD83 (2011):

North: 1785463.74 East: 3066546.28 (U.S. survey feet)

Type of monument: Harrison, 4" disk 'Section Corner'

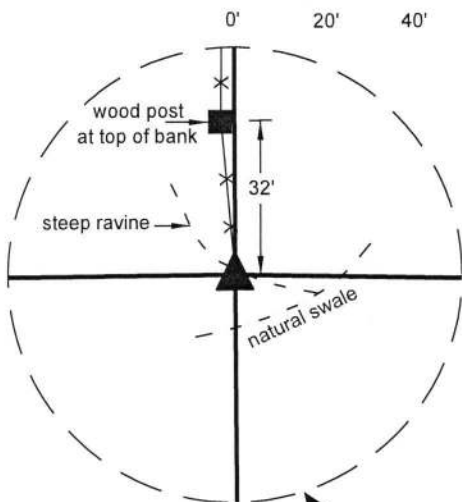
Depth: Six inches above adjacent ground

Indiana tie card references:

IN02_T20NR2W30_44 IN02_T20NR2W29_36

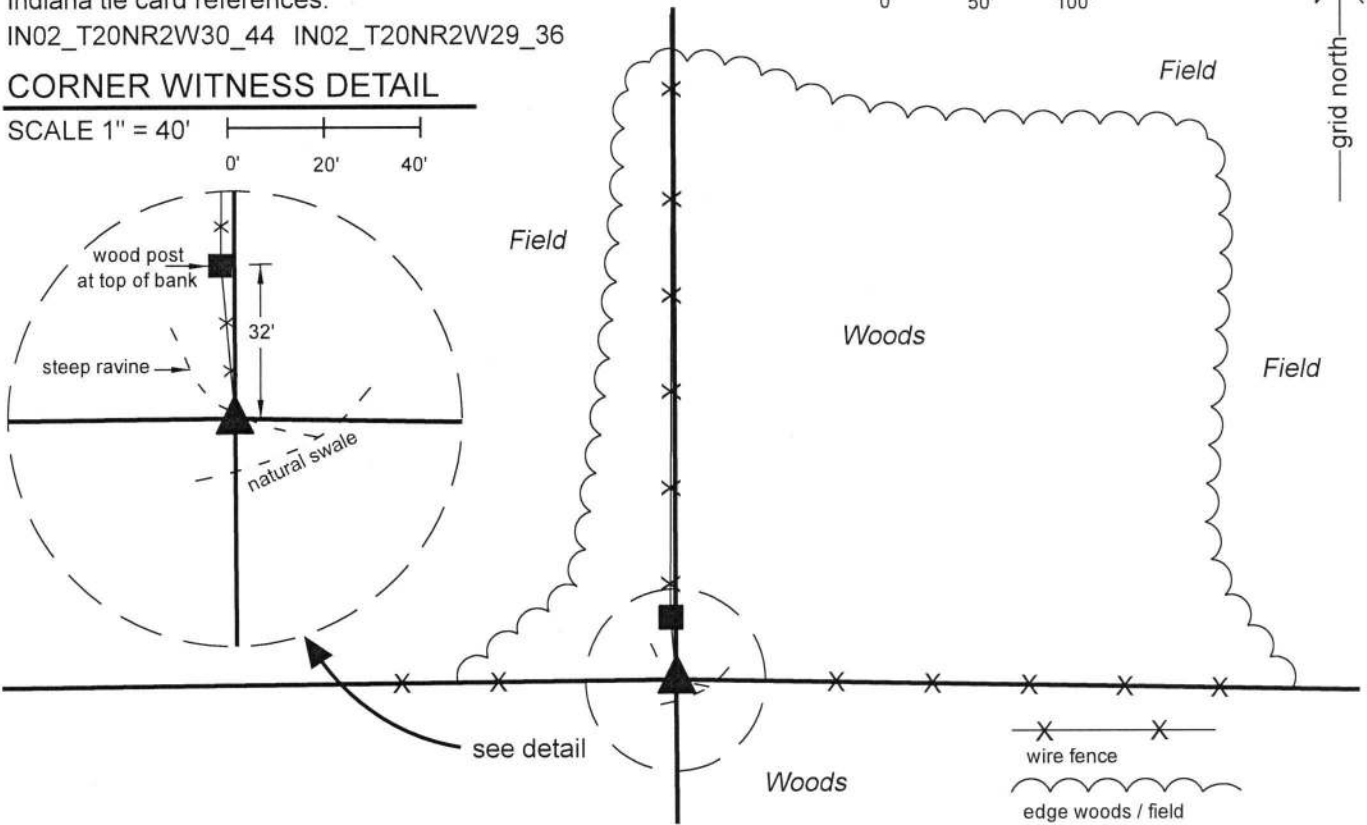
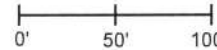
CORNER WITNESS DETAIL

SCALE 1" = 40'

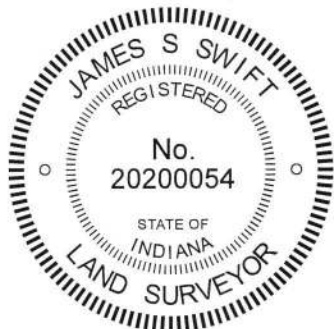


CORNER OVERVIEW

SCALE 1" = 100'



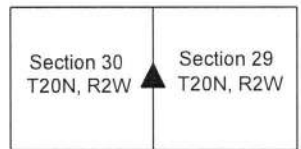
The Harrison monument was set in place of a wood corner post found. No specific descriptions of this corner were found in the BCS Surveyor's Record beyond the original establishment of the corner as a wood post in 1829. No recent BCS tie cards or recorded surveys were found referencing the corner. This corner was excavated on December 19, 2018. Prior to excavation, an ancient wood corner post was found with evidence of fencing to the north, south, east, and west. The corner falls along the edge of a steep ravine to the northwest at approximately the point where the ravine opens into a wider swale slightly south of the corner. The surrounding area is forested and the fences are not maintained in the immediate vicinity of the corner. Hence, the fences are visible but generally on the ground. Clearly, however, the found post represents the corner of the fences in the four cardinal directions and notches for former braces were visible on the south and east sides of the post. Excavation around the post revealed a large rock found at one foot deep, adjacent to the east edge of the post. The rock appears to serve the purpose of bracing the post. It is noted that the rock is situated on the downhill side of the post, in line with one of the brace notches. The stone does not match the characteristics of a stone purposely set to mark the corner and considered to be a brace rock, rather than corner stone. The post is in-line with standing fencing found to the west and east of the corner and fits well with evidence found indicating the positions of the corners 1/2 and 1/4 mile east, respectively. It is noted that the standing fence north of the corner, beginning at the top of the bank, approximately 32 feet north of the corner, is generally approximately 2.5 feet west of the line connecting the subject corner and the corner 1/2 mile north (see BCS Corner NW 800-1100). Hence, an uncertainty of 2.5 feet east-west may be attributed to the position of the corner. Nonetheless, the ancient post clearly represents the intersection point of the old fences in all four directions. The post was held as marking the corner. The post was removed and replaced with a Harrison monument in the same position on December 19, 2018.



Kenneth E. Hedge
 Kenneth E. Hedge, County Surveyor

James S. Swift
 James S. Swift, IN LS 20200054
 January 23, 2019

Sugar Creek Township



SECTION CORNER RECORD

BOONE COUNTY SURVEYOR'S OFFICE

NW 800-1100

State Plane grid coordinates NAD83 (2011):

North: 1788128.40 East: 3066534.22 (U.S. survey feet)

Type of monument: Harrison, 4" disk 'Section Corner'

Depth: One inch below adjacent road surface

Indiana tie card references:

IN02_T20NR2W19_80 IN02_T20NR2W20_72

IN02_T20NR2W30_08 IN02_T20NR2W29_00

CORNER WITNESS DETAIL

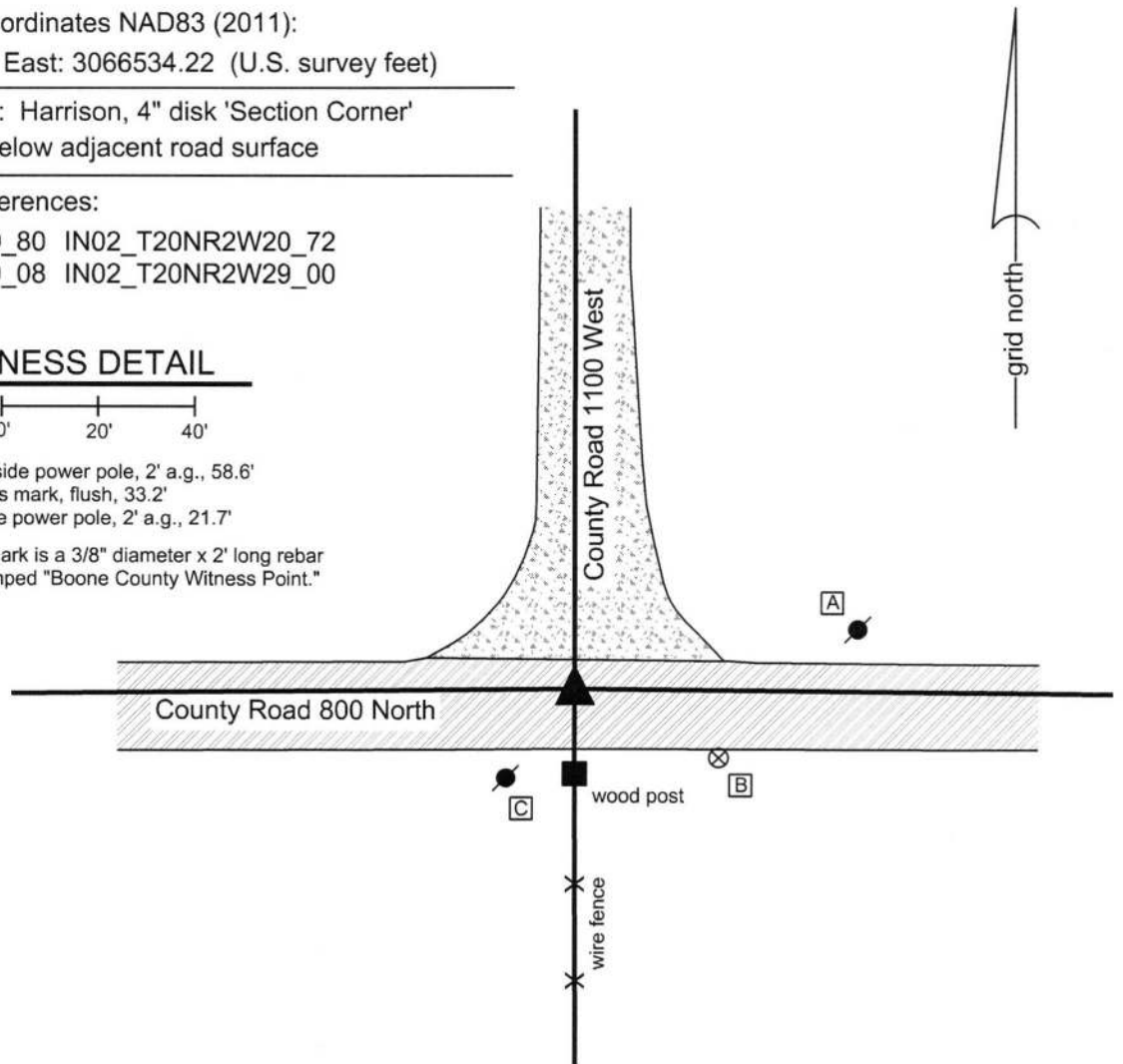
SCALE 1" = 40'

A - Mag nail set in S.W. side power pole, 2' a.g., 58.6'

B - Boone County witness mark, flush, 33.2'

C - Mag nail set in N. side power pole, 2' a.g., 21.7'

Boone County witness mark is a 3/8" diameter x 2' long rebar bearing a metal cap stamped "Boone County Witness Point."



The Harrison monument was set over a stone found.

A BCS record dated October 21, 1867 states, with respect to this corner, "A Stone that was placed." A BCS tie card dated August 16, 1971 states "No Stone - RRR put in."

This corner was excavated on June 15, 2016. Prior to excavation, a Mag nail was found at 3 inches deep in a hole in the asphalt roadway.

Excavation revealed a vertical section of railroad rail found at 5 inches deep, slightly north and east of the Mag nail. Further excavation revealed a stone found at 17 inches, several feet north of the nail and rail. With the top 6 inches of the stone exposed, it measured 8.5 inches E-W by 6 inches N-S. The south side of the stone was exposed to its bottom, 10 inches below the top of the stone. The south side is vertical and flat while the north side is more sloping. The stone had a distinct ridge across the top oriented in the E-W direction. No specific marks were found on the stone. The stone was held as marking the corner and a Harrison monument was set over the center of the E-W ridge. The Mag nail and railroad rail, removed during excavation, had been 3.0 feet south and 0.5 foot west of the stone.

This corner was originally established as a wood post in 1829.



Kenneth E. Hedge
Kenneth E. Hedge, County Surveyor

James S. Swift
James S. Swift, IN LS 20200054
March 23, 2017

Sugar Creek Twp

Section 19 T20N, R2W	Section 20 T20N, R2W
Section 30 T20N, R2W	Section 29 T20N, R2W

PHOTOGRAPHIC DOCUMENTATION

Date of photography: June 15, 2016

The stone as it was originally exposed, circled in red.



View showing the exposed, vertical south edge of the stone.



View from the south, looking across the stone and north along County Road 1100 West.



View from the north, looking across the stone and along the existing fence to the south.



For details and documentation, refer to related sheet "Section Corner Record."

SECTION CORNER RECORD

NW 800-1150

BOONE COUNTY SURVEYOR'S OFFICE

State Plane grid coordinates NAD83 (2011):

North: 1788104.08 East: 3063875.71 (U.S. survey feet)

Type of monument: Harrison, 4" disk 'Section Corner'

Depth: One inch below adjacent road surface

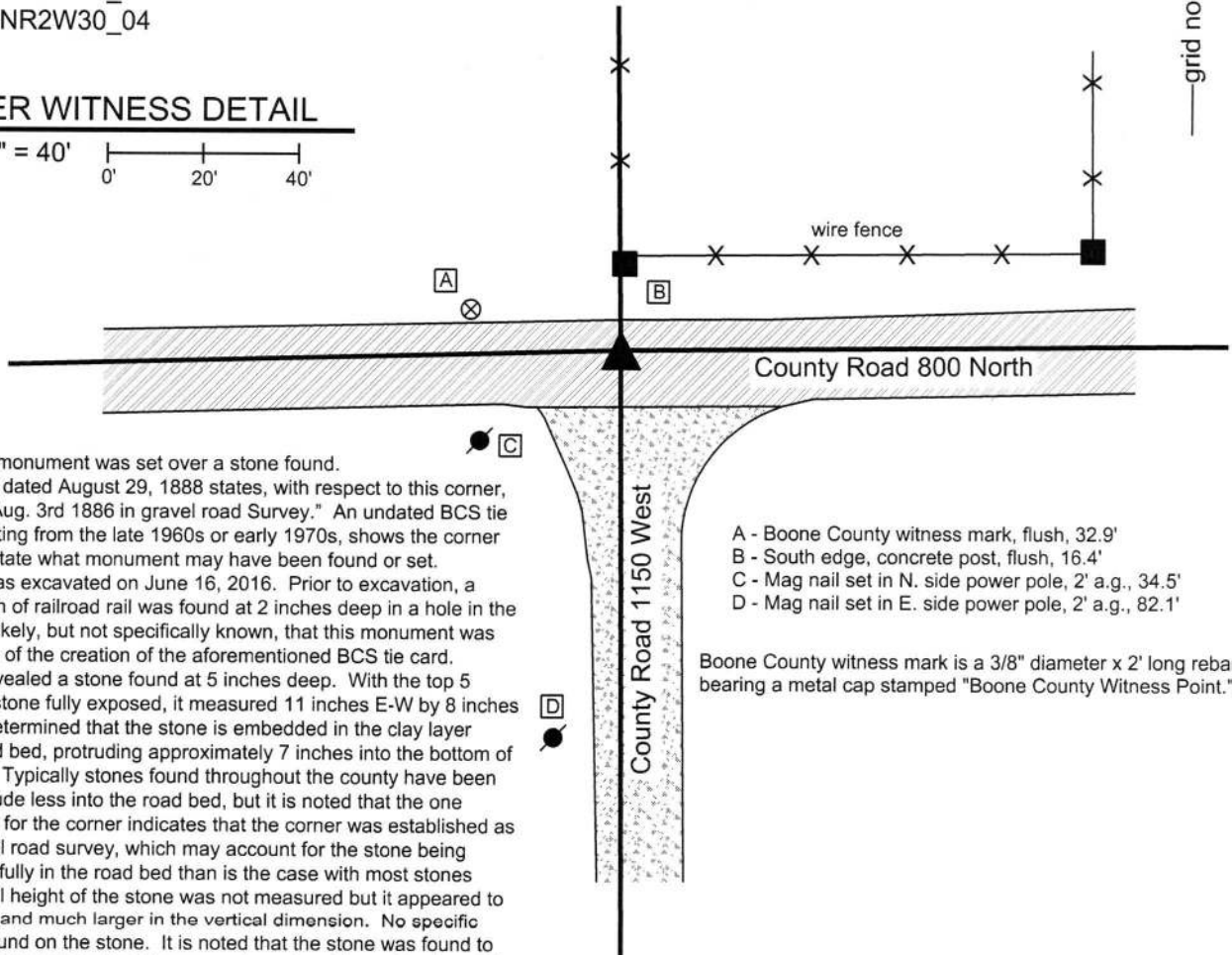
Indiana tie card references:

IN02_T20NR2W19_76

IN02_T20NR2W30_04

CORNER WITNESS DETAIL

SCALE 1" = 40'



The Harrison monument was set over a stone found. A BCS record dated August 29, 1888 states, with respect to this corner, "Established Aug. 3rd 1886 in gravel road Survey." An undated BCS tie card, likely dating from the late 1960s or early 1970s, shows the corner but does not state what monument may have been found or set. This corner was excavated on June 16, 2016. Prior to excavation, a vertical section of railroad rail was found at 2 inches deep in a hole in the asphalt. It is likely, but not specifically known, that this monument was set at the time of the creation of the aforementioned BCS tie card. Excavation revealed a stone found at 5 inches deep. With the top 5 inches of the stone fully exposed, it measured 11 inches E-W by 8 inches N-S. It was determined that the stone is embedded in the clay layer below the road bed, protruding approximately 7 inches into the bottom of the road bed. Typically stones found throughout the county have been found to protrude less into the road bed, but it is noted that the one reliable record for the corner indicates that the corner was established as part of a gravel road survey, which may account for the stone being situated more fully in the road bed than is the case with most stones found. The full height of the stone was not measured but it appeared to be substantial and much larger in the vertical dimension. No specific marks were found on the stone. It is noted that the stone was found to be situated at one rod south of the concrete post on the north edge of the road. The stone was accepted as marking the corner. The top 5 inches of the stone were embedded in concrete and a Harrison monument was set over the top, center of the stone. The vertical section of railroad rail, removed during excavation, had been 1.9 feet south and 1.3 feet east of the stone. This corner was originally established as a wood post in 1829.

- A - Boone County witness mark, flush, 32.9'
- B - South edge, concrete post, flush, 16.4'
- C - Mag nail set in N. side power pole, 2' a.g., 34.5'
- D - Mag nail set in E. side power pole, 2' a.g., 82.1'

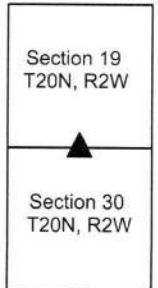
Boone County witness mark is a 3/8" diameter x 2' long rebar bearing a metal cap stamped "Boone County Witness Point."



Kenneth E. Hedge
 Kenneth E. Hedge, County Surveyor

James S. Swift
 James S. Swift, IN LS 20200054
 March 23, 2017

Sugar Creek Township



PHOTOGRAPHIC DOCUMENTATION

Date of photography: June 16, 2016

The stone as it was originally exposed.



The stone more fully exposed, from above and north.



View from above the stone looking south along County Road 1150 West.



View from the west looking across the stone and east along County Road 800 North.



For details and documentation, refer to related sheet "Section Corner Record."