

# SECTION CORNER RECORD

## BOONE COUNTY SURVEYOR'S OFFICE

NW 000-1000

State Plane grid coordinates NAD83 (2011):

Corner 1: North: 1745562.22 East: 3071932.64 (U.S. survey feet)

Type of monument: Harrison, 4" disk 'Section Corner'

Depth: Six inches below adjacent road surface

Indiana tie card references:

IN02\_T19NR2W33\_72 IN02\_T19NR2W32\_80

IN02\_T18NR2W05\_08 IN02\_T18NR2W04\_00

### CORNER WITNESS DETAIL

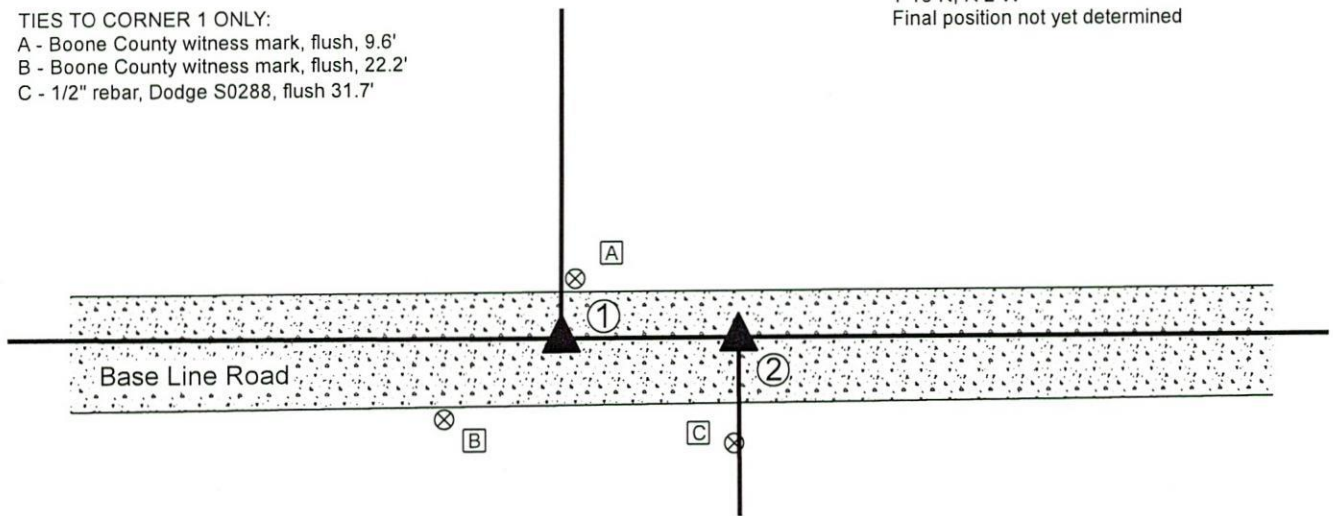
SCALE 1" = 30'

TIES TO CORNER 1 ONLY:

A - Boone County witness mark, flush, 9.6'

B - Boone County witness mark, flush, 22.2'

C - 1/2" rebar, Dodge S0288, flush 31.7'



- ① S.E. Corner, Section 32  
S.W. Corner, Section 33  
T 19 N, R 2 W  
Harrison monument set
- ② N.E. Corner, Section 5  
N.W. Corner, Section 4  
T 18 N, R 2 W  
Final position not yet determined

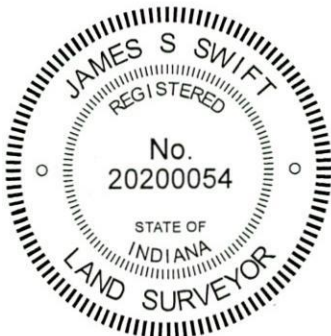


The Harrison monument at Corner 1 was set in place of a stone found. The final position of Corner 2 will be established on the township line after the standard corner to the east (NW 000-950) is determined and monumented.

A BCS record of 1857 shows Corner 2 as "set post." No specific descriptions of Corner 1 were found in the BCS Surveyor's Record beyond the original establishment of the corner as a wood post in 1819. Corner 1 is noted as the terminal point for measurements in an entry of 1867, indicating that some monument was likely present from which to measure at that time.

A BCS tie card dated October 16, 1969 states "No stone. RRR set." The tie card is referenced to Corner 2 but it is believed that the railroad rail was set at that time closer to Corner 1. A BCS tie card dated January 18, 1994 shows a railroad spike at Corner 2, 26.4 feet east of Corner 1. The 1994 tie card demonstrates that, at that time, a fence bore north from Corner 1.

Both of these corners were excavated on January 3, 2020. Prior to excavation, a section of railroad rail leaning substantially toward the west was found providing evidence of Corner 1 and a broken off piece of steel t-post was found providing evidence of Corner 2. The tops of the two monuments were found at 26.9 feet apart. Excavation revealed a stone found at 4 inches deep, slightly north and west of the railroad rail. The stone was 8 inches E-W by 7 inches N-S by 6 inches tall, embedded in the clay layer below the rather thin road bed. No specific etched marks were observed on the stone. Excavation of an area extending 1 foot east, 5 foot north, 1 foot south and 6 feet west of the piece of steel t-post revealed no further evidence of Corner 2. The found stone was held as marking the position of Corner 1. The stone was removed and replaced with a Harrison monument in the position of the top, center of the stone. The top of the railroad rail, removed during excavation, had been 2.0 feet south and 0.9 foot east of the top, center of the stone. Corner 2 was not monumented. The final position of this corner will be established on the township line at the record federal closing distance of 40 links east of Corner 1, after the standard corner to the east (NW 000-950) is monumented.



*Kenneth E. Hedge*  
Kenneth E. Hedge, County Surveyor

*James S. Swift*  
James S. Swift, IN LS 20200054  
January 8, 2020

Jefferson Township

Section 32 T19N, R2W	Section 33 T19N, R2W
Section 5 T18N, R2W	Section 4 T18N, R2W

# SECTION CORNER RECORD

NW 050-1000

## BOONE COUNTY SURVEYOR'S OFFICE

State Plane grid coordinates NAD83 (2011):

North: 1748210.76 East: 3071928.84 (U.S. survey feet)

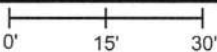
Type of monument: Harrison, 4" disk 'Section Corner'

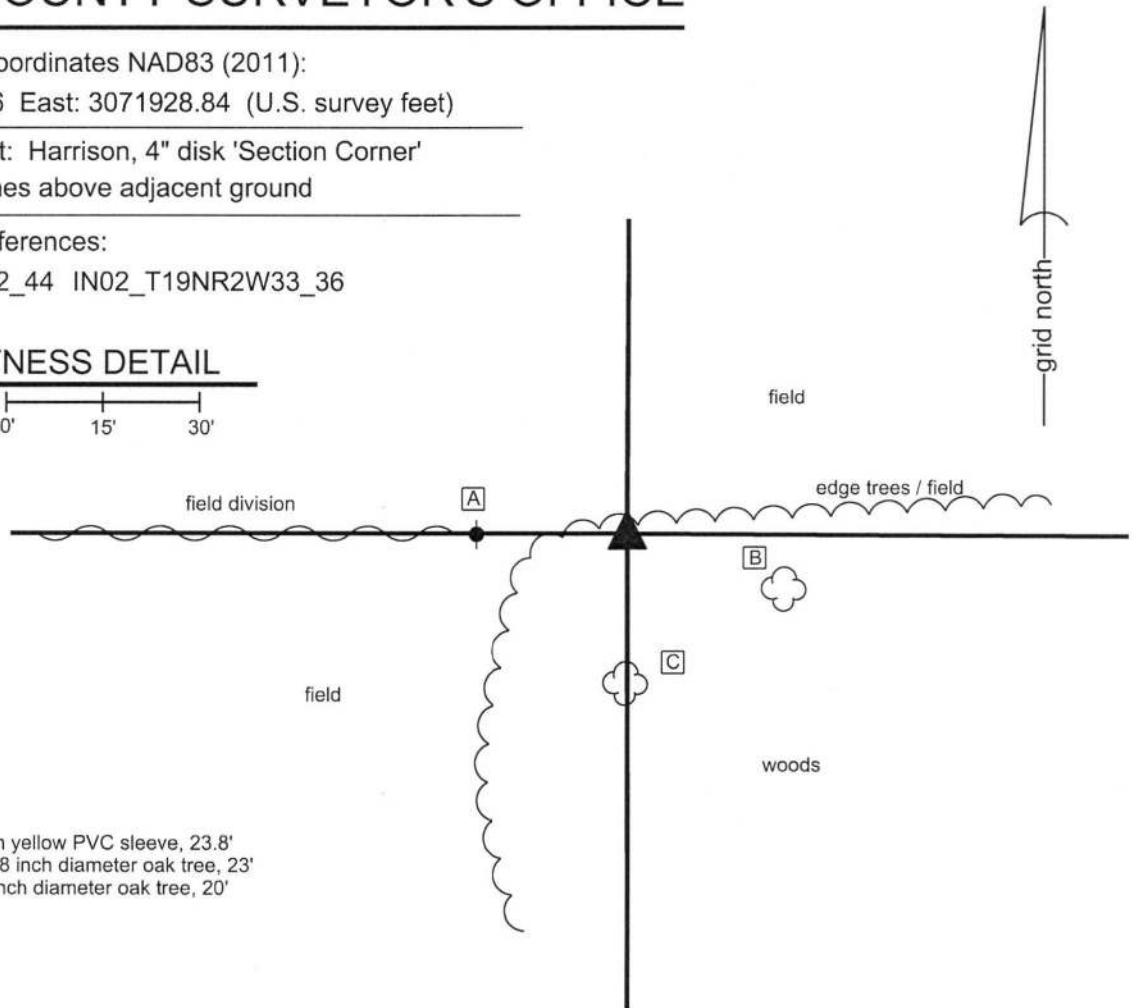
Depth: Three inches above adjacent ground

Indiana tie card references:

IN02\_T19NR2W32\_44 IN02\_T19NR2W33\_36

### CORNER WITNESS DETAIL

SCALE 1" = 30' 




- A - Steel t-post in yellow PVC sleeve, 23.8'
- B - N.W. edge, 48 inch diameter oak tree, 23'
- C - N. edge, 13 inch diameter oak tree, 20'

The Harrison Monument was set in place of a rebar which was set in place of a stone found. No specific descriptions of this corner were found in the BCS Surveyor's Record beyond the original establishment of the corner as a wood post in 1822. No recent BCS tie cards were found referencing the corner. In October, 2013, James Reese Harpel, LS20000203, found a stone which he believed to be marking the corner. He contacted the Boone County Surveyor's Office and I, James Swift, met him at the corner and confirmed that the stone appeared to represent the best evidence of the original position of the corner. The associated survey by Harpel dated October 7, 2013 holds the position of the stone as the corner. On October 16, 2018 the corner was revisited. On this visit, it was apparent that significant disruption has occurred at the corner, as fences have been removed. A rebar bearing the cap of Deckard Engineering (Harpel's company) was found at the corner in the same position as the stone as found in October, 2013. The position of the rebar (formerly stone) fits well with local evidence of the corner in the form of fragments of fence to the south and a field division to the west and fits well with the relative positions of proximate corners. The rebar was held as marking the corner and was replaced with a Harrison monument in the same position on October 16, 2018.



  
Kenneth E. Hedge, County Surveyor

  
James S. Swift, IN LS 20200054  
November 14, 2018

Jefferson Township

Section 32 T19N, R2W	Section 33 T19N, R2W
-------------------------	-------------------------

# SECTION CORNER RECORD

# NW 050-1100

## BOONE COUNTY SURVEYOR'S OFFICE

State Plane grid coordinates NAD83 (2011):

Corner: North: 1748226.53 East: 3066641.25 (U.S. survey feet)

Witness: North: 1748226.53 East: 3066641.83 (U.S. survey feet)

Corner monument: Wood corner post

Witness monument: 5/8 inch rebar with metal cap stamped

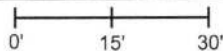
'Boone County Surveyor' 3 inches a.g.

Indiana tie card references:

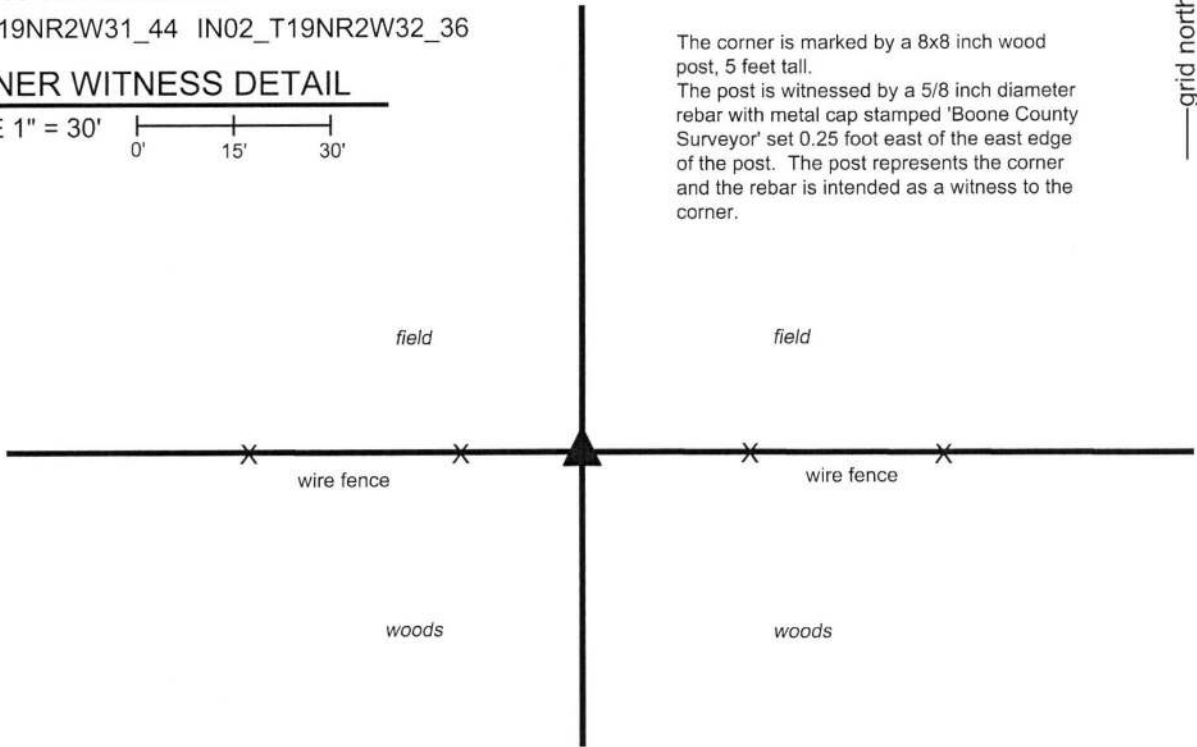
IN02\_T19NR2W31\_44 IN02\_T19NR2W32\_36

### CORNER WITNESS DETAIL

SCALE 1" = 30'



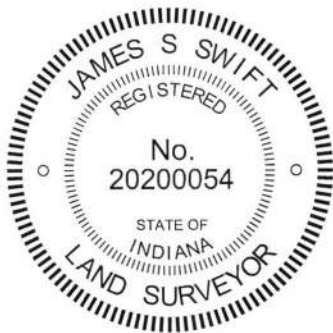
The corner is marked by a 8x8 inch wood post, 5 feet tall.  
 The post is witnessed by a 5/8 inch diameter rebar with metal cap stamped 'Boone County Surveyor' set 0.25 foot east of the east edge of the post. The post represents the corner and the rebar is intended as a witness to the corner.



The wood corner post was found in place.

No specific descriptions of this corner were found in the BCS Surveyor's Record beyond the original establishment of the corner as a wood post in 1822. Neither recent BCS tie cards nor surveys recorded in the Boone County Recorder's Office were found referencing the corner. The corner is referenced in a metes and bounds description found in Instrument 0312629 in said Recorder's Office, which calls for a distance of 1323.96 feet between this corner and the northeast corner of the west half of the southwest quarter of section 32.

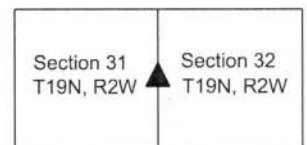
This corner was excavated on May 17, 2019. Prior to excavation, a wood corner post was found with standing fencing to the east and west and with fencing cut-off toward the north. The post is 8 inches square with a wood brace toward the west and the notch for a former brace toward the north. No stones were found around the post. Numerous stones were found in loose pile centered approximately 10 feet east of the post. None of these stones appeared to represent monuments purposely set to mark the corner. The distance between the post and a railroad spike found in the center of County Road 1075 West is approximately 2 feet less than the distance called in the aforementioned Instrument 0312629 for the line between the subject corner and the northeast corner of the west half of the southwest quarter. No rebars or other artificial survey monuments were found in the vicinity of the post. The post is clearly ancient and fits well with the relative positions of proximate corners. The post was accepted as the best available evidence of the corner. The post was left in place and is witnessed by a 30 inch length of 5/8 inch rebar with metal cap stamped 'Boone County Surveyor' set 0.25 feet east of the east edge of the post.



*Kenneth E. Hedge*  
 Kenneth E. Hedge, County Surveyor

*James S. Swift*  
 James S. Swift, IN LS 20200054  
 June 12, 2019

Jefferson Township



# SECTION CORNER RECORD

## BOONE COUNTY SURVEYOR'S OFFICE

NW 100-1150

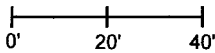
State Plane grid coordinates NAD83 (2011):  
 North: 1750868.29 East: 3063979.78 (U.S. survey feet)

Type of monument: Plug in monument box, INDOT Type B  
 Depth: Flush with adjacent road surface

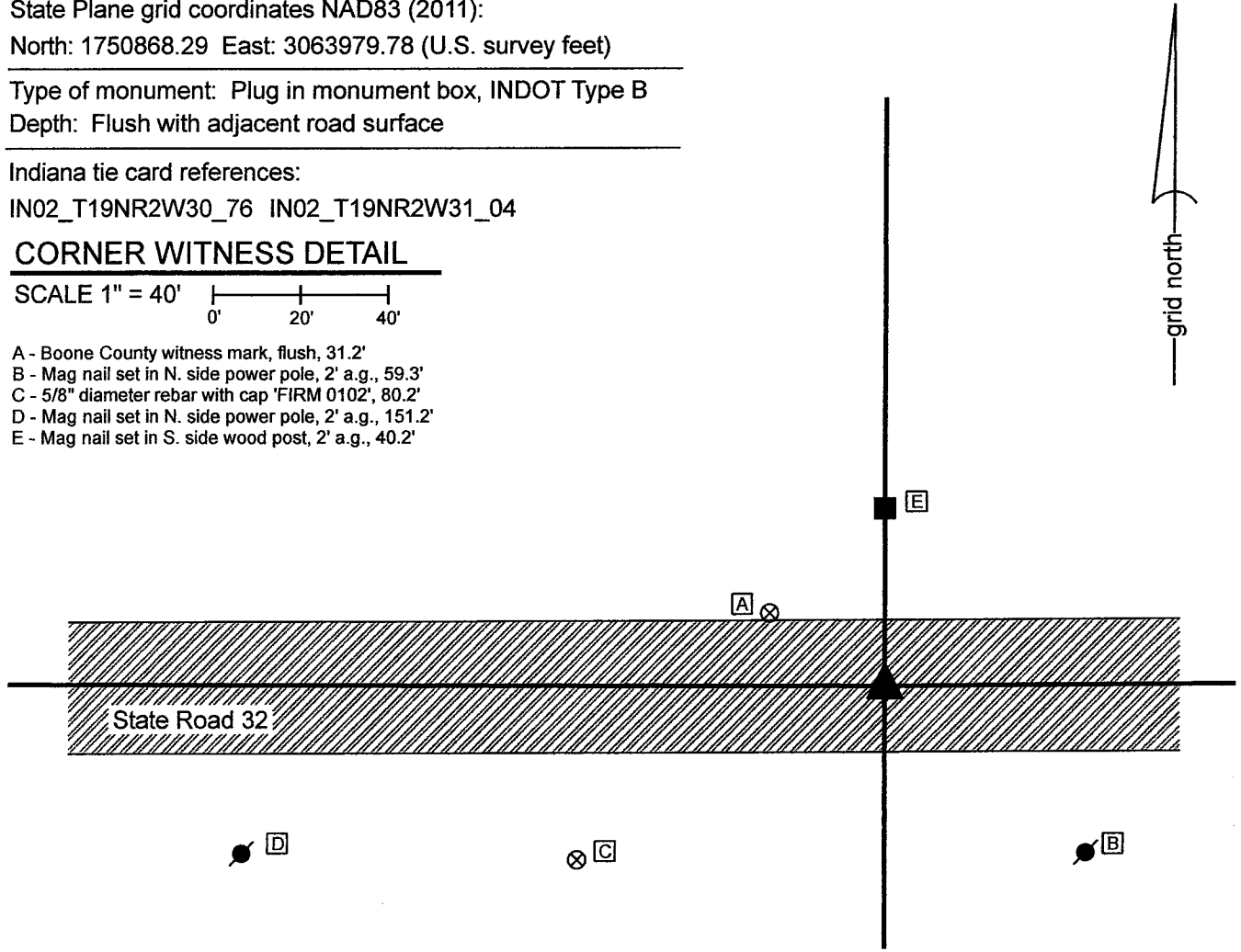
Indiana tie card references:  
 IN02\_T19NR2W30\_76 IN02\_T19NR2W31\_04

### CORNER WITNESS DETAIL

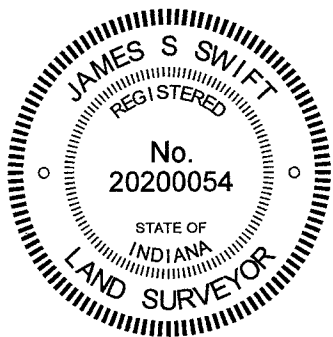
SCALE 1" = 40'



- A - Boone County witness mark, flush, 31.2'
- B - Mag nail set in N. side power pole, 2' a.g., 59.3'
- C - 5/8" diameter rebar with cap 'FIRM 0102', 80.2'
- D - Mag nail set in N. side power pole, 2' a.g., 151.2'
- E - Mag nail set in S. side wood post, 2' a.g., 40.2'

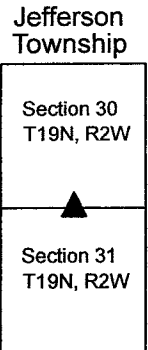


The INDOT Type B Monument was found in place and held as marking the corner.  
 No specific references to this corner were found in the BCS Surveyor's Record beyond the original establishment of the corner as a wood post in 1822. The corner is referenced as the terminal point for measurements in entries of 1850, 1852, 1858, and 1919, indicating that on those dates, some monument was present from which to measure. No recent BCS tie cards were found referencing this corner.  
 A Survey Monument Replacement Surveyor's Report recorded as Instrument 200700005107 in the Office of the Boone County Recorder indicates that between May 2006 and May 2007 an existing monument, not identified, was replaced with a Type B monument. The report notes that the new monument was set 0.08 foot SE of the previous monument.  
 No excavation was performed at this corner, as it falls in State Road 32. The Type B monument is located in a position which generally agrees with the original federal distances for the line between Sections 30 and 31, with respect to evidence of the southeast and southwest corners of Section 30, as well as the southeast corner of west half of the southeast quarter of Section 30. The monument was accepted as the best available evidence of the corner.



*Kenneth E. Hedge*  
 Kenneth E. Hedge, County Surveyor

*James S. Swift*  
 James S. Swift, IN LS 20200054  
 June 16, 2021



# SECTION CORNER RECORD

# NW 150-1200

## BOONE COUNTY SURVEYOR'S OFFICE

State Plane grid coordinates NAD83 (2011):

North: 1753523.38 East: 3061229.74 (U.S. survey feet)

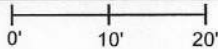
Type of monument: 5/8" rebar with aluminum cap stamped  
'Montgomery County Surveyor'

Depth: 17 inches below surrounding ground

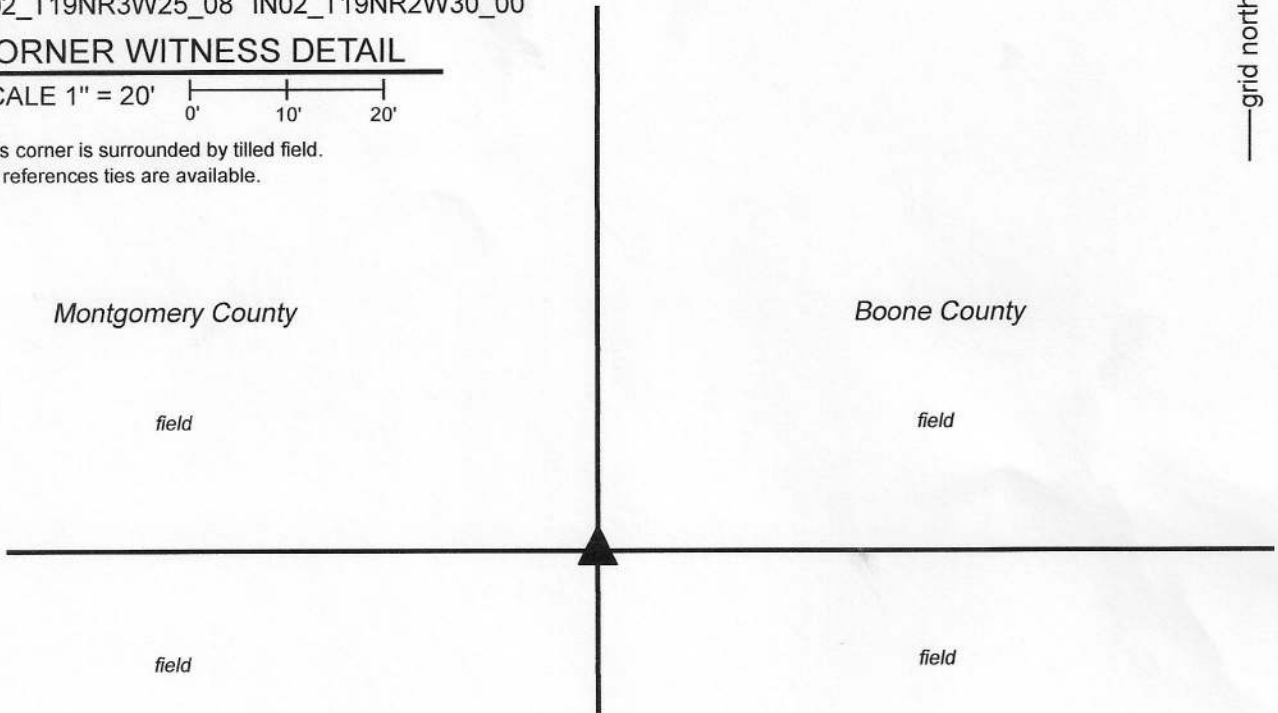
Indiana tie card references:

IN02\_T19NR3W25\_08 IN02\_T19NR2W30\_00

### CORNER WITNESS DETAIL

SCALE 1" = 20' 

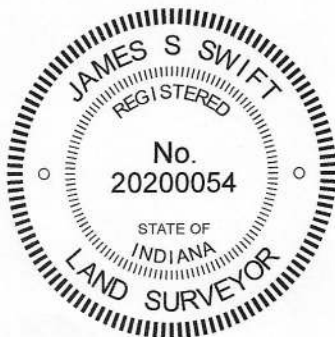
This corner is surrounded by tilled field.  
No references ties are available.



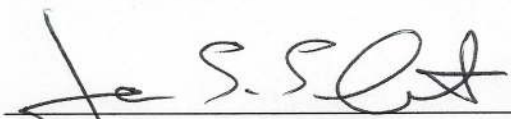
The rebar with Montgomery County Surveyor cap was found in place and held as marking the corner.

A BCS record of June 30, 1852 references the corner but does not specify a monument found or set. No specific descriptions of monumentation for the corner were found in the Boone County Surveyor's Record. No recent BCS tie cards were found referencing the corner. A Section Corner Dossier dated March 30, 2016, provided by the Montgomery County Surveyor, shows the corner as a 5/8 inch rebar with metal cap stamped 'Montgomery County Surveyor.' The dossier states that the rebar was set in place of a stone found 1.4 feet below grade. The stone was found near the remnants of the base of a wood corner post, which was found per information shown on a 1993 survey recorded in Survey Book 2, page 469 in the Office of the Montgomery County Recorder. Currently, no evidence of occupation exists in the immediate vicinity of the corner. Evidently, the old corner post was still visible in 1993 and held as the corner for purposes of that survey. The rebar set in place of the stone which was found near the remnants of the old corner post was held as marking the corner. The rebar was found at 17 inches below grade, amidst tilled field, on March 20, 2020. The rebar was held as found and left in place.

It is noted that this corner, though on a range line, is a common corner for the sections in Ranges 2 and 3 West, due to the presence of the west line of the Thorntown Reserve slightly to the east and the fact that the original federal surveyors in 1822 held the standard corners at the section corners and surveyed east therefrom to the west line of the reserve. The corner was originally established in 1819 as the quarter corner for the section to the west. This corner is not technically an original corner for the section to the east (Boone County).



  
Kenneth E. Hedge, County Surveyor

  
James S. Swift, IN LS 20200054  
May 27, 2020

Franklin Township  
Montgomery County

Jefferson Township  
Boone County

Section 25 T19N, R3W	Section 30 T19N, R2W
-------------------------	-------------------------

# SECTION CORNER RECORD

NW 200-1100

## BOONE COUNTY SURVEYOR'S OFFICE

State Plane grid coordinates NAD83 (2011):  
North: 1756190.09 East: 3066637.85 (U.S. survey feet)

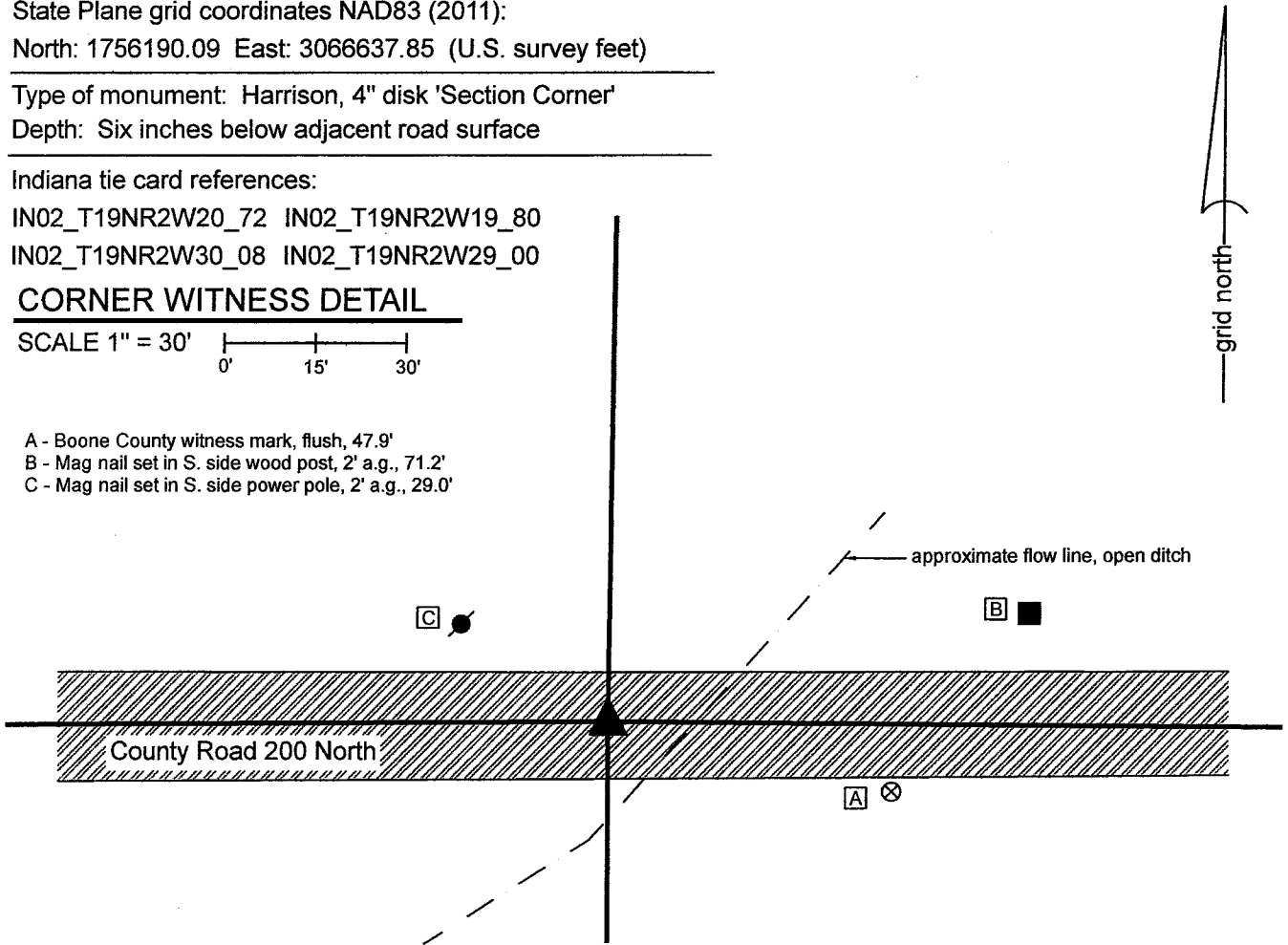
Type of monument: Harrison, 4" disk 'Section Corner'  
Depth: Six inches below adjacent road surface

Indiana tie card references:  
IN02\_T19NR2W20\_72 IN02\_T19NR2W19\_80  
IN02\_T19NR2W30\_08 IN02\_T19NR2W29\_00

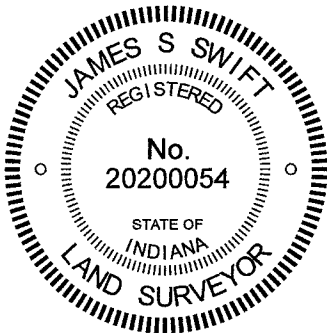
### CORNER WITNESS DETAIL

SCALE 1" = 30'  
0' 15' 30'

- A - Boone County witness mark, flush, 47.9'
- B - Mag nail set in S. side wood post, 2' a.g., 71.2'
- C - Mag nail set in S. side power pole, 2' a.g., 29.0'



The Harrison monument was set in place of a rebar found.  
No specific descriptions of this corner were found in the BCS Surveyor's Record beyond the original establishment of the corner as a wood post in 1829. No recent BCS tie cards were found referencing this corner.  
Excavation was performed at this corner on October 26, 2021. Prior to excavation, a 5/8-inch diameter rebar was found at 3 inches below grade, in the approximate center of the east-west county road, at the northerly prolongation of an old north-south fence which terminates on the south side of the open ditch which crosses under the road immediately east of the corner. Due to the presence of the ditch and a large metal culvert so close to the corner, exploratory excavation was not performed at this corner, as there appears to be minimal chance of an old monument such as a corner stone being present and having survived previous excavations associated with the open ditch and culvert. An area 30 inches wide N-S by 4 feet long E-W was excavated to 2 feet deep. This depth is below the general grade of the adjacent land but only fill material was observed in this area of excavation, indicating, as expected, that the immediate vicinity of the corner has been previously disturbed.  
The position of the rebar fit well with the relative positions of other, proximate corners and fit well with local evidence of the corner, being in the center of the east-west road and in-line with the standing fence south of the ditch.  
The rebar was accepted as providing the best available evidence of the corner and was held as marking the corner. The rebar was removed during excavation and replaced with a Harrison monument in the same position on October 26, 2021.



*Kenneth E. Hedge*  
Kenneth E. Hedge, County Surveyor

*James S. Swift*  
James S. Swift, IN LS 20200054  
November 1, 2021

Jefferson Township

Section 19 T19N, R2W	Section 20 T19N, R2W
Section 30 T19N, R2W	Section 29 T19N, R2W

# SECTION CORNER RECORD

NW 200-1200

## BOONE COUNTY SURVEYOR'S OFFICE

State Plane grid coordinates NAD83 (2011):

North: 1756171.73 East: 3061223.59 (U.S. survey feet)

Type of monument: 5/8" rebar with aluminum cap stamped  
'Montgomery County Surveyor'

Depth: 12 inches below surrounding ground

Indiana tie card references:

IN02\_T19NR2W19\_72 IN02\_T19NR3W24\_80

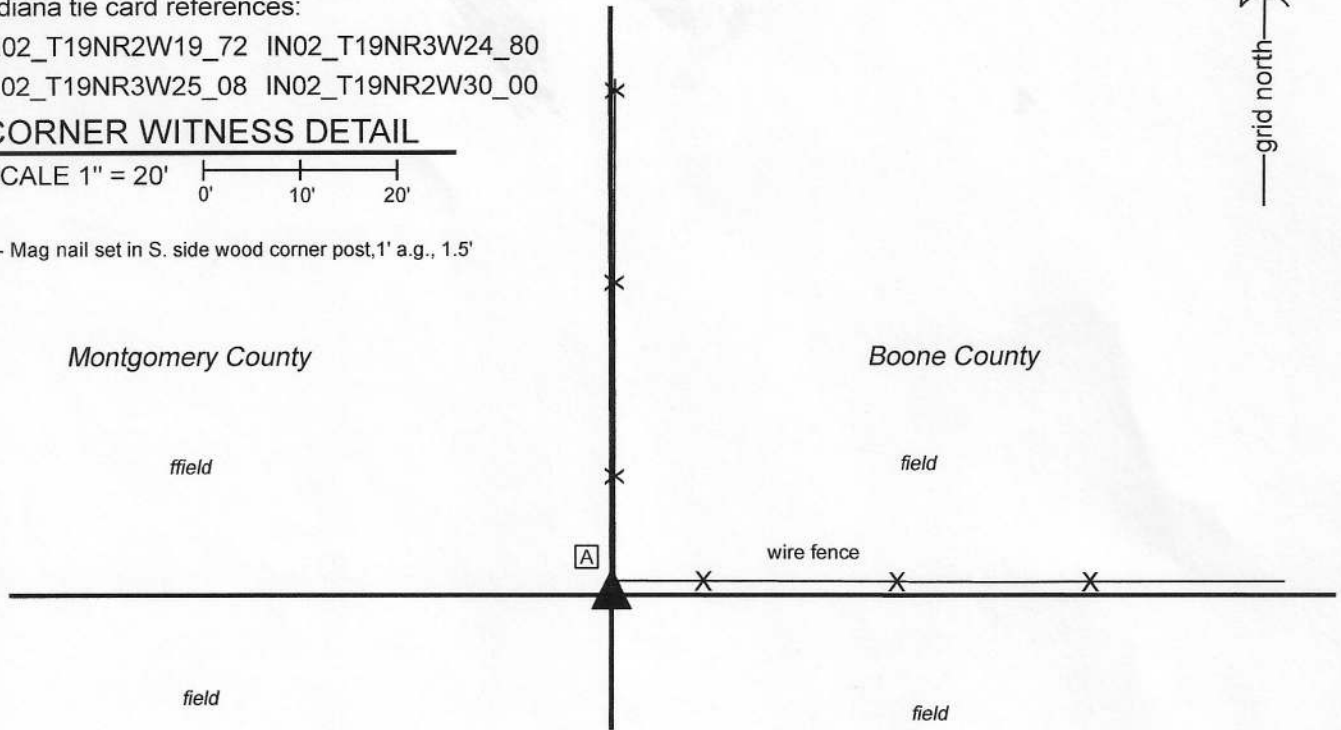
IN02\_T19NR3W25\_08 IN02\_T19NR2W30\_00

### CORNER WITNESS DETAIL

SCALE 1" = 20'



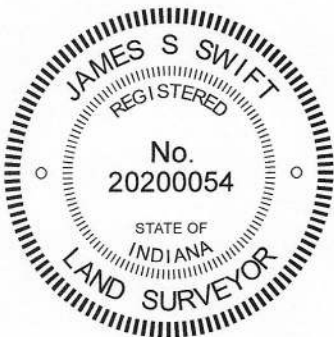
A - Mag nail set in S. side wood corner post, 1' a.g., 1.5'



The rebar with Montgomery County Surveyor cap was found in place and held as marking the corner.

A BCS record dated April 27, 1869 states, with respect to this corner, "Reestablished from stumps of both trees. Set rock 12, 15 marked +."

No recent BCS tie cards were found referencing this corner. A Section Corner Dossier dated March 23, 2016, provided by the Montgomery County Surveyor, shows the corner as a 5/8 inch rebar with metal cap set in place of a stone. The dossier notes that the stone was found 0.8 foot below grade, 1.7 feet south of the center of a 7 inch square wood corner post with old fence line running north and east. The dossier states that the stone is of the same size as referenced by Boone County Surveyor D.M. Burns in a record of July 23, 1873. It is observed that the entry in the BCS Surveyor's Record which references a stone set at this corner is dated April 27, 1869 and is directly above a set of entries dated July 23, 1873. The Montgomery County monument was found on March 20, 2020 and was held, accepted as being in place of the stone set by the Boone County Surveyor in 1869. The monument is sufficiently far from the edge of the post that it is in a tilled area. A surface monument may be damaged or destroyed at this position. The rebar was found at 12 inches below grade, evidently below that which would be tilled in the vicinity of the post. The Montgomery County rebar was left in place, as found. It is noted that this corner, though on a range line, is a common corner for the sections in Ranges 2 and 3 West, due to the presence of the west line of the Thorntown Reserve slightly to the east and the fact that the original federal surveyors in 1822 held the standard corners at the section corners and surveyed east therefrom to the west line of the reserve. The corner was originally established in 1819 and held in 1822.



*Kenneth E. Hedge*  
Kenneth E. Hedge, County Surveyor

*James S. Swift*  
James S. Swift, IN LS 20200054  
May 27, 2020

Franklin Township  
Montgomery County

Jefferson Township  
Boone County

Section 24 T19N, R3W	Section 19 T19N, R2W
Section 25 T19N, R3W	Section 30 T19N, R2W