

SECTION CORNER RECORD

BOONE COUNTY SURVEYOR'S OFFICE

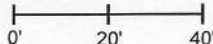
NW 100-500

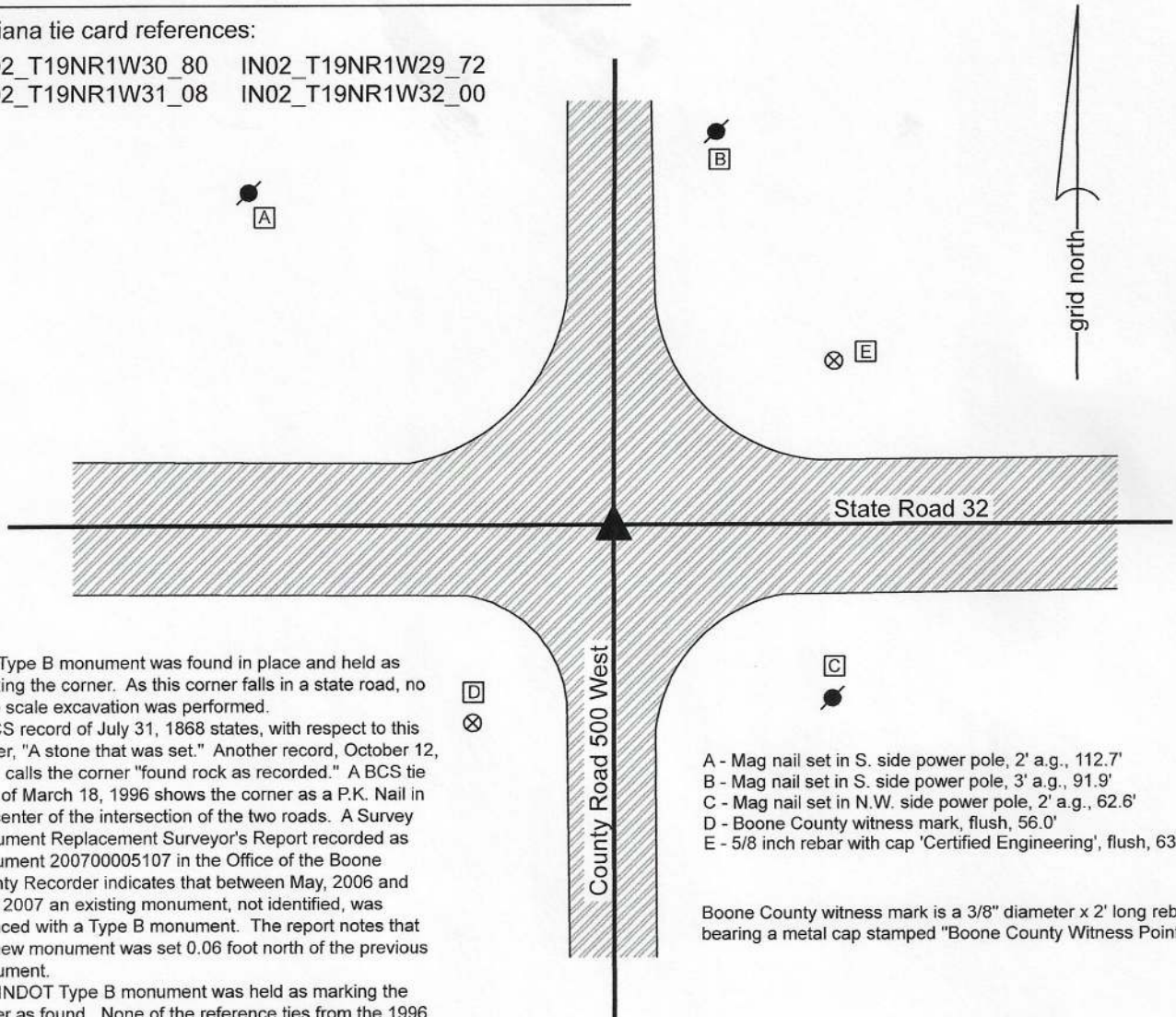
State Plane grid coordinates NAD83 (2011):
 North: 1750807.99 East: 3098335.91 (U.S. survey feet)

Type of monument: Plug in monument box, INDOT Type B
 Depth: Flush with adjacent road surface

Indiana tie card references:
 IN02_T19NR1W30_80 IN02_T19NR1W29_72
 IN02_T19NR1W31_08 IN02_T19NR1W32_00

CORNER WITNESS DETAIL

SCALE 1" = 40' 



The Type B monument was found in place and held as marking the corner. As this corner falls in a state road, no large scale excavation was performed.

A BCS record of July 31, 1868 states, with respect to this corner, "A stone that was set." Another record, October 12, 1912 calls the corner "found rock as recorded." A BCS tie card of March 18, 1996 shows the corner as a P.K. Nail in the center of the intersection of the two roads. A Survey Monument Replacement Surveyor's Report recorded as Instrument 200700005107 in the Office of the Boone County Recorder indicates that between May, 2006 and May, 2007 an existing monument, not identified, was replaced with a Type B monument. The report notes that the new monument was set 0.06 foot north of the previous monument.

The INDOT Type B monument was held as marking the corner as found. None of the reference ties from the 1996 tie card were found. It is assumed, but not proven, that the Type B is in the same position as the previously held PK Nail.

This corner was originally established as a wood post in 1822.

- A - Mag nail set in S. side power pole, 2' a.g., 112.7'
- B - Mag nail set in S. side power pole, 3' a.g., 91.9'
- C - Mag nail set in N.W. side power pole, 2' a.g., 62.6'
- D - Boone County witness mark, flush, 56.0'
- E - 5/8 inch rebar with cap 'Certified Engineering', flush, 63.1'

Boone County witness mark is a 3/8" diameter x 2' long rebar bearing a metal cap stamped "Boone County Witness Point."



Kenneth E. Hedge
 Kenneth E. Hedge, County Surveyor

James S. Swift
 James S. Swift, IN LS 20200054
 May 11, 2020

Jefferson Township

Section 30 T19N, R1W	Section 29 T19N, R1W
Section 31 T19N, R1W	Section 32 T19N, R1W

SECTION CORNER RECORD

BOONE COUNTY SURVEYOR'S OFFICE

NW 100-550

State Plane grid coordinates NAD83 (2011):
 North: 1750803.23 East: 3095695.08 (U.S. survey feet)

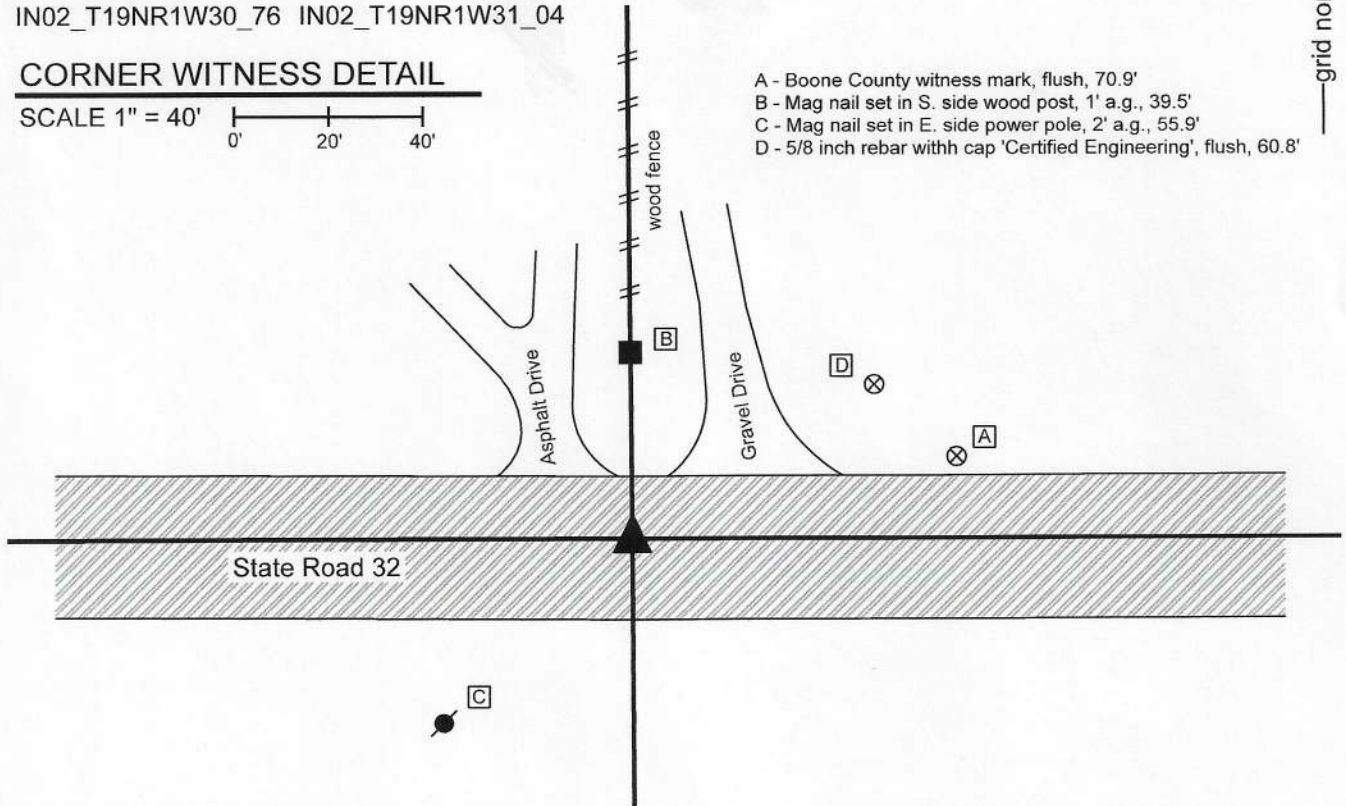
Type of monument: plug in monument box, INDOT Type B
 Depth: flush with road surface

Indiana tie card references:
 IN02_T19NR1W30_76 IN02_T19NR1W31_04

CORNER WITNESS DETAIL

SCALE 1" = 40'

- A - Boone County witness mark, flush, 70.9'
- B - Mag nail set in S. side wood post, 1' a.g., 39.5'
- C - Mag nail set in E. side power pole, 2' a.g., 55.9'
- D - 5/8 inch rebar with cap 'Certified Engineering', flush, 60.8'



The Type B monument was found in place and held as marking the corner. As this corner falls in a state road, no large scale excavation was performed.

ABCS record of March 9, 1880 states, with respect to this corner, "Reestd. Set rock 40x15x20 plus on top." BCS tie cards of 1994, 1995 and 1996 show the corner as a P.K. Nail in the approximate center of the state road, in-line with an occupation line to the north. A Survey Monument Replacement Surveyor's Report recorded as Instrument 200700005107 in the Office of the Boone County Recorder indicates that between May, 2006 and May, 2007 an existing monument, not identified, was replaced with a Type B monument. The report notes that the new monument was set 0.09 foot northwest of the previous monument.

The INDOT Type B monument was held as marking the corner as found. The position of the corner agrees with local evidence in the form of being at the the center of the east-west road and being in-line wih a wood post and fence to the north. This appears to agree as well with the 1912 records. This corner was originally established as a wood post in 1822.



Kenneth E. Hedge
 Kenneth E. Hedge, County Surveyor

James S. Swift
 James S. Swift, IN LS 20200054
 May 11, 2020

Jefferson Township

Section 30
 T19N, R1W

Section 31
 T19N, R1W

SECTION CORNER RECORD

NW 100-600

BOONE COUNTY SURVEYOR'S OFFICE

State Plane grid coordinates NAD83 (2011) U.S. Survey feet:

Corner 1: North: 1750828.27 East: 3093116.03

Corner 2: North: 1750797.91 East: 3093116.12

Corner 1: Mag nail with washer, flush

Corner 2: INDOT Type B Monument

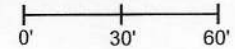
Indiana tie card references:

IN02_T19NR2W25_80 IN02_T19NR1W30_72

IN02_T19NR2W36_08 IN02_T19NR1W31_00

CORNER WITNESS DETAIL

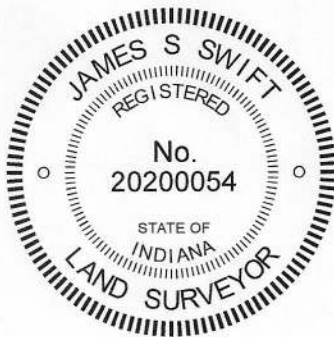
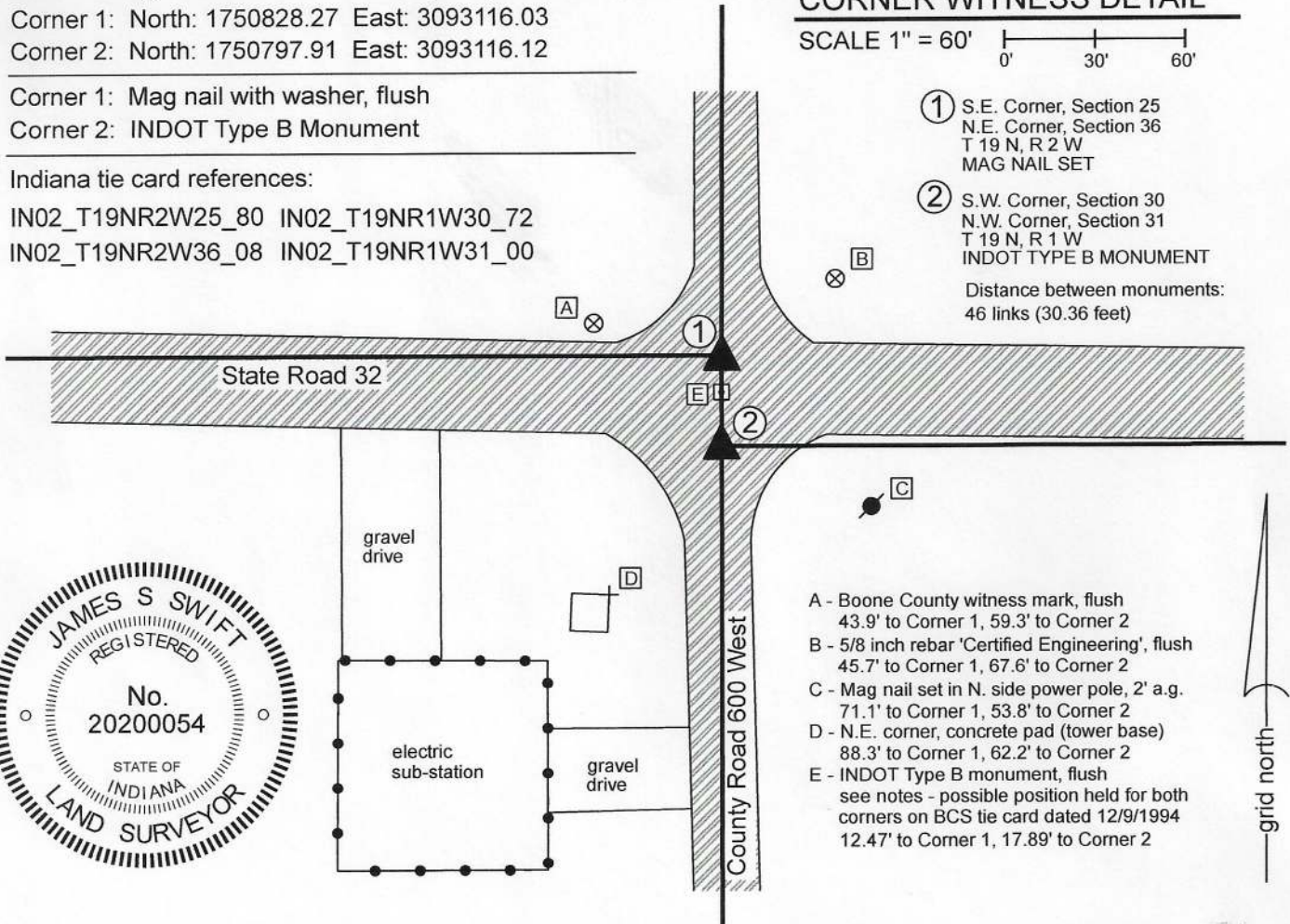
SCALE 1" = 60'



① S.E. Corner, Section 25
N.E. Corner, Section 36
T 19 N, R 2 W
MAG NAIL SET

② S.W. Corner, Section 30
N.W. Corner, Section 31
T 19 N, R 1 W
INDOT TYPE B MONUMENT

Distance between monuments:
46 links (30.36 feet)



- A - Boone County witness mark, flush
43.9' to Corner 1, 59.3' to Corner 2
- B - 5/8 inch rebar 'Certified Engineering', flush
45.7' to Corner 1, 67.6' to Corner 2
- C - Mag nail set in N. side power pole, 2' a.g.
71.1' to Corner 1, 53.8' to Corner 2
- D - N.E. corner, concrete pad (tower base)
88.3' to Corner 1, 62.2' to Corner 2
- E - INDOT Type B monument, flush
see notes - possible position held for both
corners on BCS tie card dated 12/9/1994
12.47' to Corner 1, 17.89' to Corner 2

The INDOT Type B monument was found and held as marking Corner 2. The Mag nail with washer "Boone County Surveyor" marking Corner 1 was set at the record federal closing distance of 46 links (30.36 feet) northerly of Corner 2.

The original federal notes of 1822 show the closing corner (Corner 2) as being 46 links south of the standard corner (Corner 1). A BCS record of September 4, 1865 states, with respect to Corner 1 and referencing Corner 2, "Reestablished by measuring the lap 46 links from the corner of Sects. 30 & 31. Set a Rock 12, 11, 7 marked." No specific descriptions of Corner 2 were found in the BCS Surveyor's Record beyond the original establishment of the corner in 1822. A BCS tie card dated December 9, 1994 shows Corner 1 as a P.K. Nail with washer. The sketch does not appear to take into account the 46 links offset at Corner 1 and demonstrates the corner to be at the center of the intersection of the two roads. Although the tie card states that the specific corner is the standard corner (Corner 1), the sketch demonstrates the section line bearing east and west from the corner with no offset.

Two INDOT Type B monuments were found at this intersection. Both monuments are referenced on a Survey Monument Replacement Surveyor's Report recorded as Instrument 200700005107 in the Office of the Boone County Recorder. The monuments are separated by 17.9 feet, significantly less than the original federal offset of 46 links (30.36 feet) which was confirmed by the 1865 record. Analysis of the relative positions of the found Type B monuments with adjacent corners in all cardinal directions, taking into account original federal dimensions and dimensions shown in the 1865 record clearly indicates that the southerly of the two monuments is in a reasonable position expected for Corner 2, but the northerly of the two monuments is south of the expected position for Corner 1. No uncertainty exists as to the offset, being 46 links or 30.36 feet.

Distance ties shown on the 1994 BCS tie card indicate that the northerly of the Type B monuments was likely set in the same position as the P.K. Nail shown on the 1994 tie card. As noted above, this tie card does not take into account the 46 links federal offset on the range line, treating the two separate corners as a common corner and is clearly in error on that count. No excavation was performed at these corners, as they both fall within the state highway. The southerly of the two Type B monuments was held as marking Corner 2. Corner 1 was established at 30.36 feet north thereof on the prolongation of the line connecting the east quarter corner of section 36 (see BCS Corner NW 050-600) with the monument held as marking Corner 2. A mag nail with washer stamped 'Boone County Surveyor' was set at this position on June 17, 2020. The Type B monument previously held as marking this corner is 12.5 feet south. Another mag nail, unknown origin, was found 16.1 feet north of Corner 2.

Corner 1 was originally established as a wood post in 1819. Corner 2 was established as a wood post in 1822.

Jefferson Township

Section 25 T19N, R2W	Section 30 T19N, R1W
Section 36 T19N, R2W	Section 31 T19N, R1W

Kenneth E. Hedge
Kenneth E. Hedge, County Surveyor

James S. Swift
James S. Swift, IN LS 20200054 August 5, 2020

SECTION CORNER RECORD

NW 150-500

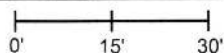
BOONE COUNTY SURVEYOR'S OFFICE

State Plane grid coordinates NAD83 (2011):
North: 1753445.69 East: 3098338.90 (U.S. survey feet)

Type of monument: Harrison, 4" disk 'Section Corner'
Depth: One inch below adjacent road surface

Indiana tie card references:
IN02_T19N1W29_36 IN02_T19NR1W30_44

CORNER WITNESS DETAIL

SCALE 1" = 30' 

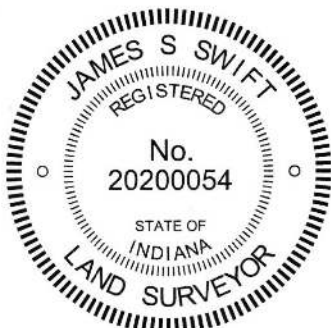
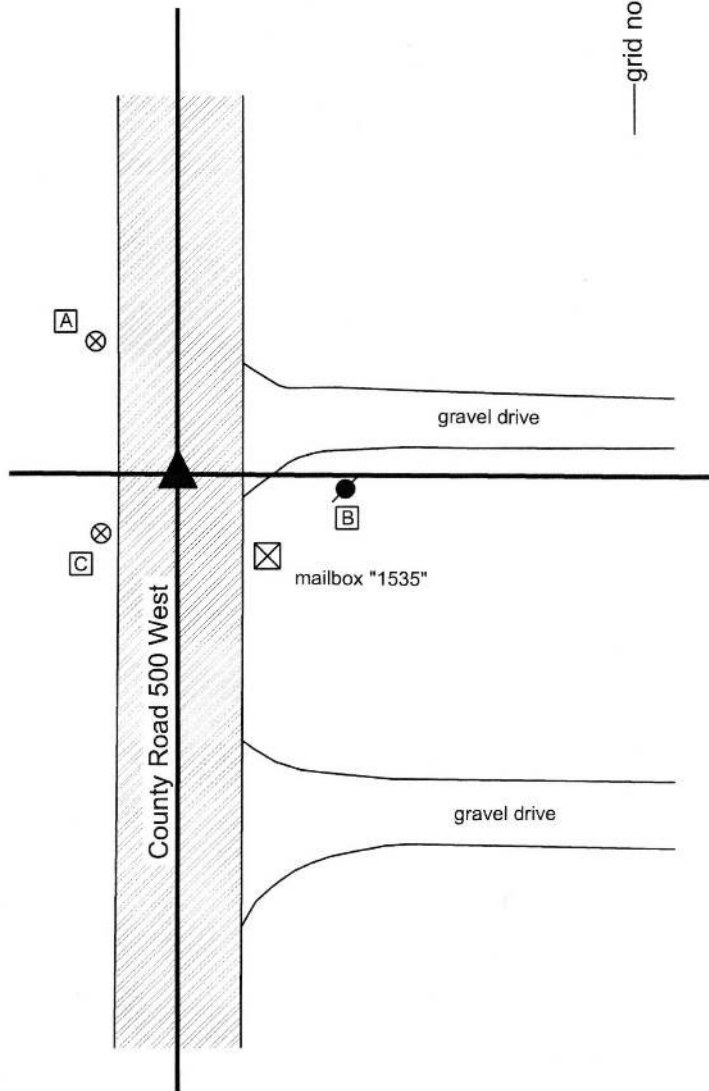
- A - Boone County witness mark, flush, 24.3'
- B - Mag nail set in W. side power pole, 2' a.g., 24.8'
- C - Boone County witness mark, flush, 15.1'

Boone County witness mark is a 3/8" diameter x 2' long rebar bearing a metal cap stamped "Boone County Witness Point."

The Harrison monument was set over a stone found. A BCS record dated October 12, 1912 states "Set rock in line 18x15x7 marked +." A BCS tie card dated September 9, 1968 states "No stone."

This corner was excavated on June 9, 2015. Prior to excavation, a 5/8 inch diameter rebar with a red plastic cap (markings illegible) was found at the surface of the road. Excavation revealed a vertical section of railroad rail found at 7 inches deep. The center of mass of the top of the rail, the point on the rail known to have been held as the exact position of the corner by the BCS crews which set the rails, was 0.2 foot south of the rebar. It is considered most likely that the rail was set in association with the creation of the 1968 tie card. Further excavation revealed a stone found at 12 inches deep. With 8 inches of the top of the stone exposed, it measured 15 inches N-S by 7 inches E-W. The stone was embedded in the clay layer below the road bed, with the top of the stone coincident with the bottom of the road bed. With 8 inches exposed, the stone remained entirely stable in the clay, indicating that it was yet larger in the vertical dimension. The east side of the stone was flat and vertical while the west side of the stone was more sloping. The stone had a distinct N-S ridge across the top and an etched notch was found at the center of the ridge, at the top, center point of the stone. The stone was accepted as being the same monument called for in the 1912 record and was held as marking the corner. The stone was left in place and a Harrison monument was set over the etched mark. The rebar and rail were both removed during excavation. The final position for the corner is 1.0 foot North and 0.4 foot East of the position of the rebar found prior to excavation.

This corner was originally established as a wood post in 1829.



Kenneth E. Hedge
Kenneth E. Hedge, County Surveyor

James S. Swift
James S. Swift, IN LS 20200054
March 24, 2016

Jefferson
Township

Section 30 T19N, R1W	Section 29 T19N, R1W
-------------------------	-------------------------

PHOTOGRAPHIC DOCUMENTATION

Date of photography: June 9, 2015

The stone as it was originally exposed.



The stone more fully exposed.



The stone exposed, view from the west.



View from the south, looking across the stone and north along County Road 500 West.



The top of the stone from above after fill material was packed back around the stone.



For details and documentation, refer to related sheet "Section Corner Record."

SECTION CORNER RECORD

BOONE COUNTY SURVEYOR'S OFFICE

NW 150-600

State Plane grid coordinates NAD83 (2011):
 North: 1753493.23 East: 3093113.65 (U.S. survey feet)

Type of monument: Harrison, 4" disk 'Section Corner'
 Depth: One inch below adjacent road surface

Indiana tie card references:
 IN02_T19NR2W25_44 IN02_T19NR1W30_36

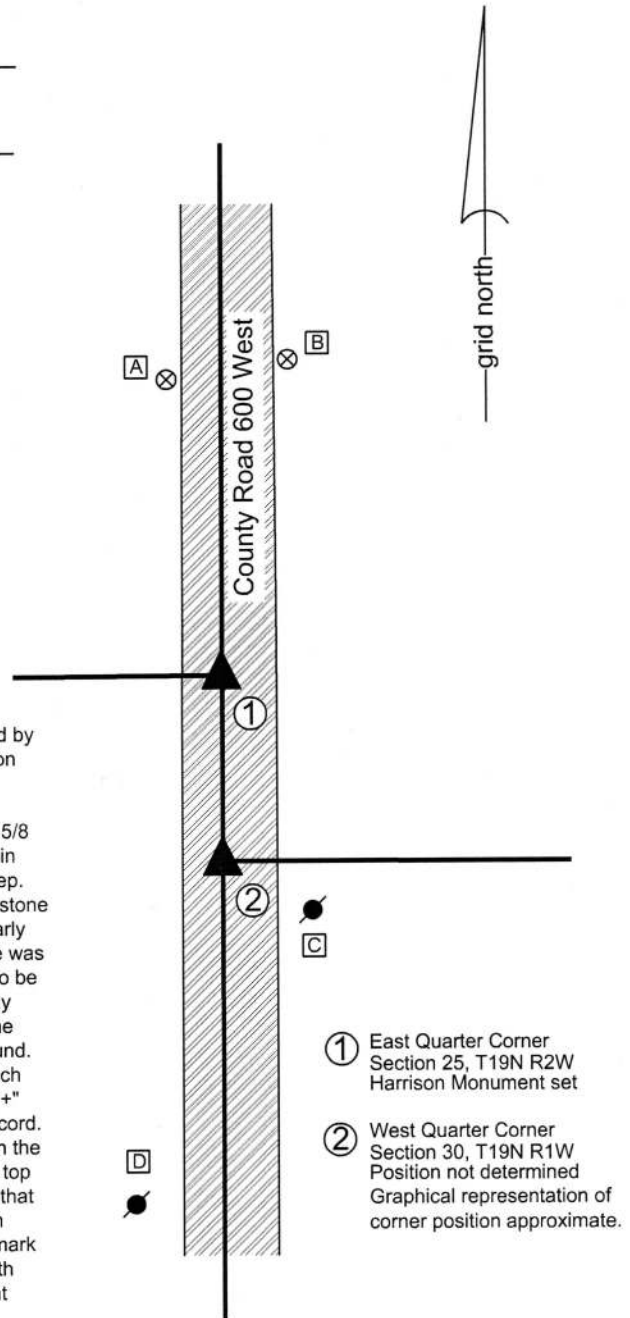
CORNER WITNESS DETAIL

SCALE 1" = 40'

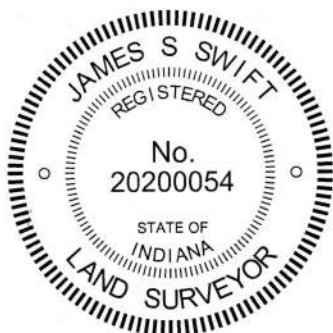
- A - Boone County witness mark, flush, 62.3'
 - B - Boone County witness mark, flush, 66.9'
 - C - Mag nail set in W. side power pole, 2' a.g., 51.4'
 - D - Mag nail set in E. side power pole, 2' a.g., 109.7'
- All ties are to corner 1 only

Boone County witness mark is a 3/8" diameter x 2' long rebar bearing a metal cap stamped "Boone County Witness Point."

The Harrison monument was set in place of a stone found.
 A BCS record dated September 4, 1865 states, with respect to this corner, "Found by boxing Elm. Hick gone but roots there. Reestablished Set Rock 8,6,6 marked + on the under side. Mulberry stake set under Rock."
 No recent tie cards were found referencing this corner.
 Excavation was performed at this corner on June 12, 2015. Prior to excavation a 5/8 inch diameter rebar with a red plastic cap (markings illegible) was found in a hole in the asphalt at 5 inches deep. Excavation revealed a stone found at 13 inches deep. The stone was found to be 6 inches N-S by 6 inches E-W by 8.5 inches tall. The stone was accepted as being the same monument described in the 1865 record. A clearly defined "+" mark was found etched on the top, center of the stone. Another stone was also found on the east edge of the record stone, but the second stone appeared to be providing stabilization for the primary rock. Both stones were embedded in the clay layer below the road, with the record stone protruding slightly into the bottom of the road bed. Both stones were removed. No further evidence of the corner was found. No evidence of a mulberry stake was found below the rocks, though a stake of such soft wood may well have rotted to nothing since 1865. It is noted that the etched "+" mark was found on the top of the rock rather than the underside, as called for in the record. Perhaps the stone was displaced and the rock oriented such that the mark was on the top rather than the underside. It is noted that most marks are found on either the top or sides of the rock and the orientation of this rock relative to its mark fit well with that general pattern. The primary rock was held as marking the corner and a Harrison monument was set in place of the rocks at the precise position of the etched "+" mark as originally found. The rebar, removed during excavation, had been 0.6 foot North and 0.2 foot West of the corner as established in place of the stone. The adjacent closing corner, being the west quarter corner of section 30, T19N, R1W was not established.
 The established corner was originally set as a wood post in 1819.

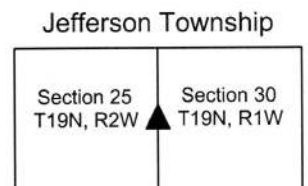


- ① East Quarter Corner Section 25, T19N R2W Harrison Monument set
- ② West Quarter Corner Section 30, T19N R1W Position not determined Graphical representation of corner position approximate.



Kenneth E. Hedge
 Kenneth E. Hedge, County Surveyor

James S. Swift
 James S. Swift, IN LS 20200054
 March 24, 2016, revised April 7, 2016



PHOTOGRAPHIC DOCUMENTATION

Date of photography: June 12, 2015

The first stone found, being the bracing stone east of the record stone, as originally found.



Both stones and the rebar.



Close-up view of the stones, showing the etched mark on the top of the record stone.



View from the north, looking across the stones and south along County Road 600 West.



The stones removed from the road, oriented approximately as found below the road bed.



For details and documentation, refer to related sheet "Section Corner Record."

SECTION CORNER RECORD

NW 200-500

BOONE COUNTY SURVEYOR'S OFFICE

State Plane grid coordinates NAD83 (2011):

North: 1756092.46 East: 3098338.74 (U.S. survey feet)

Type of monument: Harrison, 4" disk 'Section Corner'

Depth: flush with adjacent road surface

Indiana tie card references:

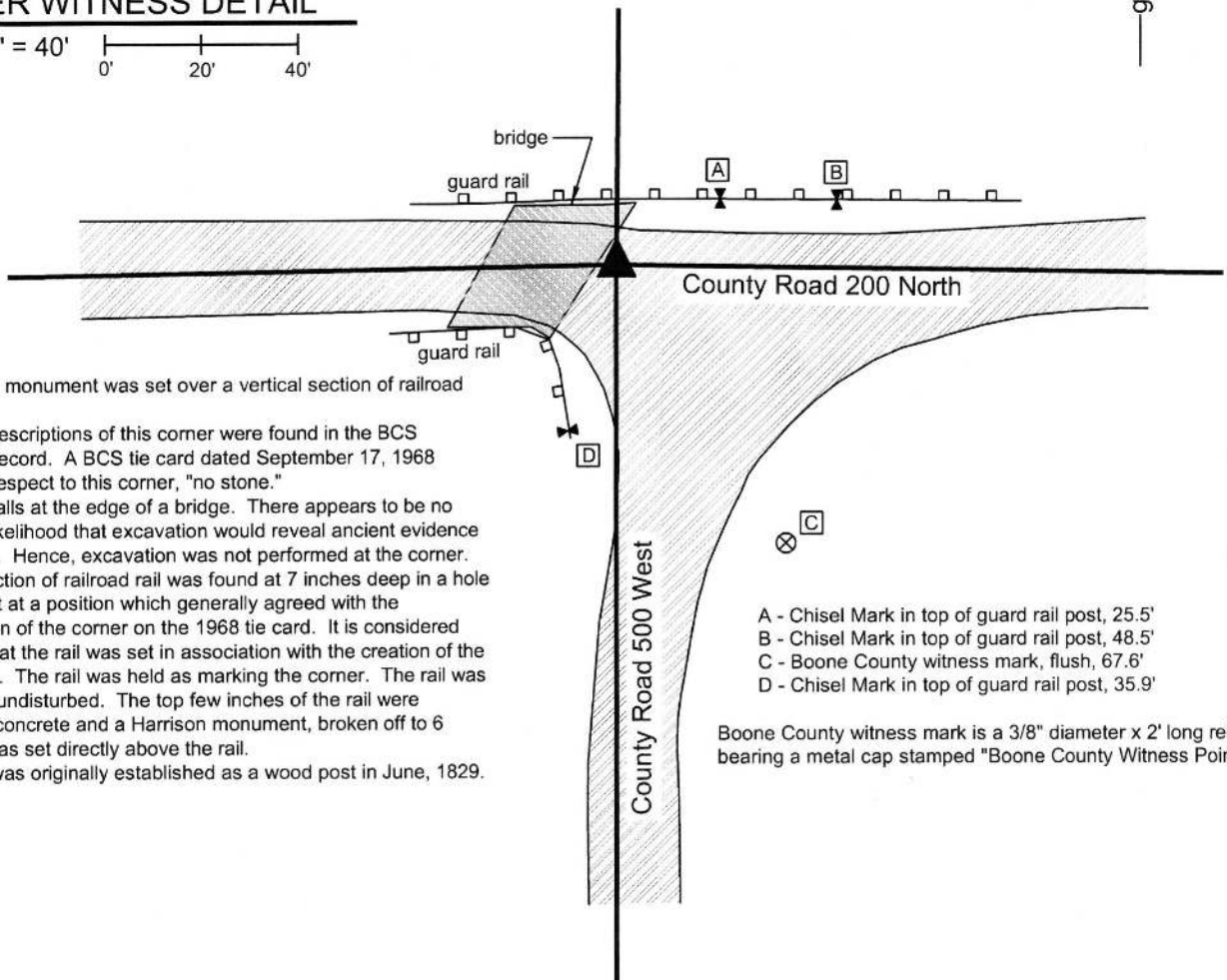
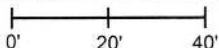
IN02_T19NR1W19_80 IN02_T19NR1W20_72

IN02_T19NR1W30_08 IN02_T19NR1W30_00



CORNER WITNESS DETAIL

SCALE 1" = 40'



The Harrison monument was set over a vertical section of railroad rail found.

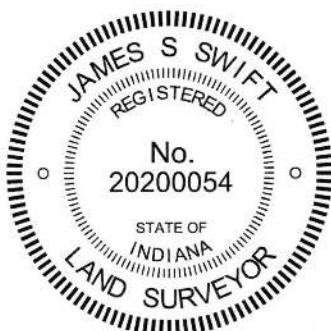
No specific descriptions of this corner were found in the BCS Surveyor's Record. A BCS tie card dated September 17, 1968 states, with respect to this corner, "no stone."

This corner falls at the edge of a bridge. There appears to be no substantial likelihood that excavation would reveal ancient evidence of the corner. Hence, excavation was not performed at the corner. A vertical section of railroad rail was found at 7 inches deep in a hole in the asphalt at a position which generally agreed with the representation of the corner on the 1968 tie card. It is considered most likely that the rail was set in association with the creation of the 1968 tie card. The rail was held as marking the corner. The rail was left in place, undisturbed. The top few inches of the rail were anchored in concrete and a Harrison monument, broken off to 6 inches tall, was set directly above the rail.

This corner was originally established as a wood post in June, 1829.

- A - Chisel Mark in top of guard rail post, 25.5'
- B - Chisel Mark in top of guard rail post, 48.5'
- C - Boone County witness mark, flush, 67.6'
- D - Chisel Mark in top of guard rail post, 35.9'

Boone County witness mark is a 3/8" diameter x 2' long rebar bearing a metal cap stamped "Boone County Witness Point."



Kenneth E. Hedge
Kenneth E. Hedge, County Surveyor

James S. Swift
James S. Swift, IN LS 20200054
March 24, 2016

Jefferson Township

Section 19 T19N, R1W	Section 20 T19N, R1W
Section 30 T19N, R1W	Section 29 T19N, R1W

SECTION CORNER RECORD

NW 200-550

BOONE COUNTY SURVEYOR'S OFFICE

State Plane grid coordinates NAD83 (2011):

North: 1756047.96 East: 3095692.59 (U.S. survey feet)

Type of monument: Harrison, 4" disk 'Section Corner'

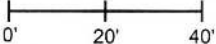
Depth: One inch below adjacent road surface

Indiana tie card references:

IN02_T19NR1W19_76 IN02_T19NR1W30_04

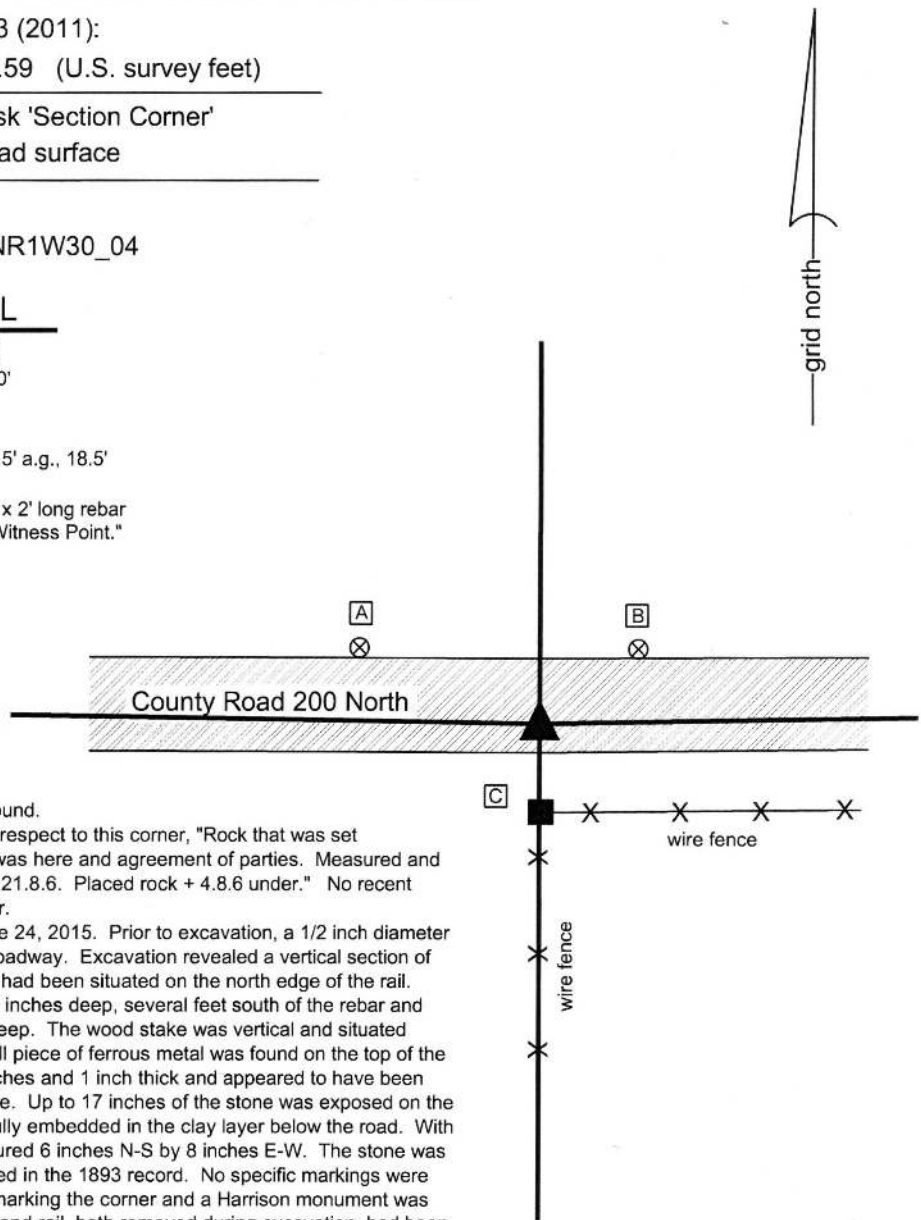
CORNER WITNESS DETAIL

SCALE 1" = 40'



- A - Boone County witness mark, flush, 40.6'
- B - Boone County witness mark, flush, 25.6'
- C - Mag nail set in N. side wood corner post, 2.5' a.g., 18.5'

Boone County witness mark is a 3/8" diameter x 2' long rebar bearing a metal cap stamped "Boone County Witness Point."



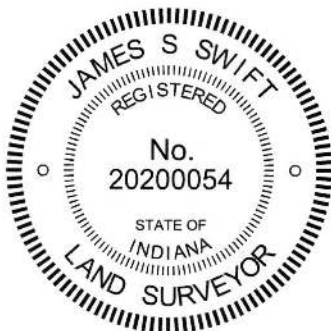
The Harrison monument was set over a stone found.

A BCS record dated March 8, 1893 states, with respect to this corner, "Rock that was set recognized from recollection from time witness was here and agreement of parties. Measured and marked + same & sunk to level of ground. Size 21.8.6. Placed rock + 4.8.6 under." No recent BCS tie cards were found referencing this corner.

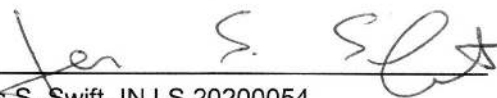
Excavation was performed at this corner on June 24, 2015. Prior to excavation, a 1/2 inch diameter rebar was found at 4 inches below the asphalt roadway. Excavation revealed a vertical section of railroad rail found at 14 inches deep. The rebar had been situated on the north edge of the rail. Further excavation revealed a stone found at 15 inches deep, several feet south of the rebar and rail. A wood stake was also found at 7 inches deep. The wood stake was vertical and situated against the east edge of the stone. Also, a small piece of ferrous metal was found on the top of the stone. The piece of iron was 5 inches by 2.5 inches and 1 inch thick and appeared to have been set to bring attention to the presence of the stone. Up to 17 inches of the stone was exposed on the north side. The stone was clearly vertical and fully embedded in the clay layer below the road. With 10 inches exposed on all sides, the stone measured 6 inches N-S by 8 inches E-W. The stone was accepted as being the same monument described in the 1893 record. No specific markings were detected on the stone. The stone was held as marking the corner and a Harrison monument was set over the top, center of the stone. The rebar and rail, both removed during excavation, had been 0.5 foot west and 3.3 feet north (rebar) and 3.2 feet north (rail), respectively, of the top, center of the stone.

It is noted that this corner is approximately 43 feet south of a straight line between the section corners to the east and west. No explanation is offered for this substantial variation from a straight line. The E-W roadway also contains a significant bend at this point and the stone appeared to be the monument as called for in the 1893 record.

This corner was originally established as a wood post in 1829.




Kenneth E. Hedge, County Surveyor


James S. Swift, IN LS 20200054
March 24, 2016

Jefferson
Township

Section 19
T19N, R1E

Section 30
T19N, R1E

PHOTOGRAPHIC DOCUMENTATION

Date of photography: June 24, 2015

The stone as it was originally exposed with the wood stake found along the east side of the stone.



The stone as it was originally exposed with the wood stake found along the east side of the stone.



The stone from above and northwest



View from the north looking across the stone and south to the wood post on the south side of County Road 200 North.



The stone fully exposed, view from above.



For details and documentation, refer to related sheet "Section Corner Record."

SECTION CORNER RECORD

NW 200-600

BOONE COUNTY SURVEYOR'S OFFICE

State Plane grid coordinates NAD83 (2011): (U.S. survey feet)

Corner 1: North: 1756136.60 East: 3093113.15

Corner 2: North: 1756089.97 East: 3093113.17

Type of monument: Harrison, 4" disk 'Section Corner'

Depth: One inch below adjacent road surface

Indiana tie card references:

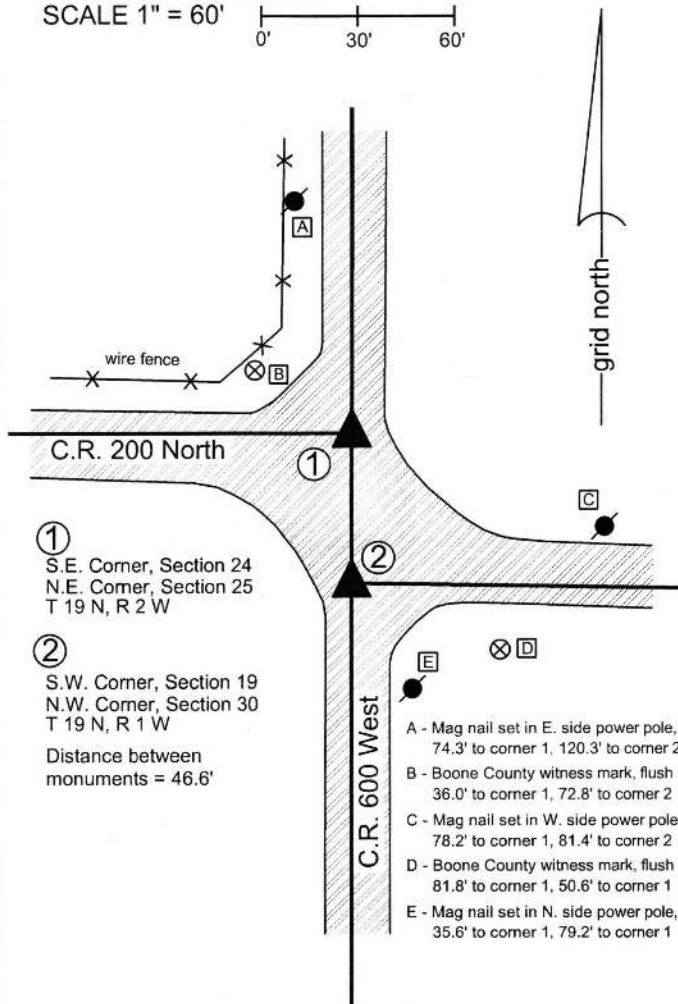
IN02_T19NR2W24_80 IN02_T19NR1W19_72

IN02_T19NR2W25_08 IN02_T19NR1W30_00

CORNER WITNESS DETAIL

SCALE 1" = 60'

0' 30' 60'



The Harrison monument at corner 1 was set over a stone found. The Harrison monument at corner 2 was set on the range line adjacent to a stone found.

A BCS record dated December 31, 1872 states, with respect to corner 1, Reestablished N.E. corner, set rock 16,12.8 +. One under it 6 1/2, 5 1/2, 4 +."

An undated BCS tie card, believed to date from June, 1974, states, with respect to corner 1, "No stone located."

A BCS record dated November 30, 1878, states, with respect to corner 2, "Reest'd 71 links S. of the lap corner. Set two limestones 12x11x3, lower, lies on side, + on top side. (Top) 18x8x4 on end + on top and a smaller one on each side. + on sides."

A BCS tie card dated June 1974 states, with respect to corner 2, "No stone."

Both corners were excavated on June 23, 2015. Prior to excavation, a railroad spike had been found in the vicinity of corner 1 and a vertical section of railroad rail had been found in the vicinity of corner 2. These two monuments were located at 43.8 feet apart. The record closing distance, originally recorded in 1829 and reaffirmed in 1878, of 71 links equates to approximately 46.9 feet.

Excavation at corner 1 revealed a railroad rail found directly below the railroad spike. Further excavation revealed a stone found at 22 inches deep. With 10 inches of the stone exposed, it measured 11.5 inches N-S by 8 inches E-W. The stone was embedded in the clay layer below the road, appeared to be vertical, and remained stable with the top 11 inches exposed. The stone had a distinct N-S ridge across the top with a discernable high point. No specific markings were observed on the stone, though it is a rough-surfaced rock and marks are hard to distinguish on such a stone. The top, high point of the stone was held as marking the corner and a Harrison monument was set at this point. The railroad spike and railroad rail, both removed during excavation, had been 0.2 foot south and 0.8 foot east of the point held as the corner.

Excavation at corner 2 revealed several stones found. The top stone was found at 22 inches deep. This stone appeared to be of limestone material and appeared to be leaning slightly toward the north. Stood vertically, the stone had a distinct etched "+" mark on the top. As stood vertically, the stone measured 18 inches tall by 8 inches N-S by 4 inches E-W. Two smaller rocks were found on the east and west sides, respectively, of the larger rock. All three stones were removed and another stone was found at 40 inches deep. This stone appeared to be horizontal and had a distinct etched "+" mark on the top of the flat rock. This set of four stones was accepted as being the same set of stones called for in the 1878 record. The etched mark on the lower stone was found to be 46.6 feet south of the top, center of the stone at corner 1 and approximately 0.4 foot west of the range line as defined by the positions of corner 1 and the standard corner approximately 1/2 mile south. Corner 2 was established on the range line at the same north-south dimension as the etched "+" mark on the lower stone. A Harrison monument was set at this position. The railroad rail, removed during excavation, had been 1.5 feet east and 2.6 feet north of the final position for corner 2. An iron pipe was also found 1 foot south of the rail. This monument was also removed during excavation. Corner 1 was originally established as a wood post in 1819 and corner 2 was originally established as a wood post in 1829.



Kenneth E. Hedge
Kenneth E. Hedge, County Surveyor

James S. Swift
James S. Swift, IN LS 20200054
March 24, 2016

Jefferson Township

Section 24 T19N, R2W	Section 19 T19N, R1W
Section 25 T19N, R2W	Section 30 T19N, R1W

PHOTOGRAPHIC DOCUMENTATION

Date of photography: June 23, 2015

The stone at the standard corner (Corner 1) as it was originally exposed.



The first stone found at the closing corner (Corner 2). Note the mark on top.



The situation at the closing corner. Three stones removed, the bottom stone left in place.



View of the standard corner.
View from the East, looking across the stone and west along County Road 200 South.



Another view of the standard corner, including the removed stone and the found iron pipe.



For details and documentation, refer to related sheet "Section Corner Record."