

# SECTION CORNER RECORD

# SW 400-1100

## BOONE COUNTY SURVEYOR'S OFFICE

State Plane grid coordinates NAD83 (2011):

North: 1724118.70 East: 3066733.25 (U.S. survey feet)

Type of monument: INDOT Type B

Depth: two inches below adjacent road surface

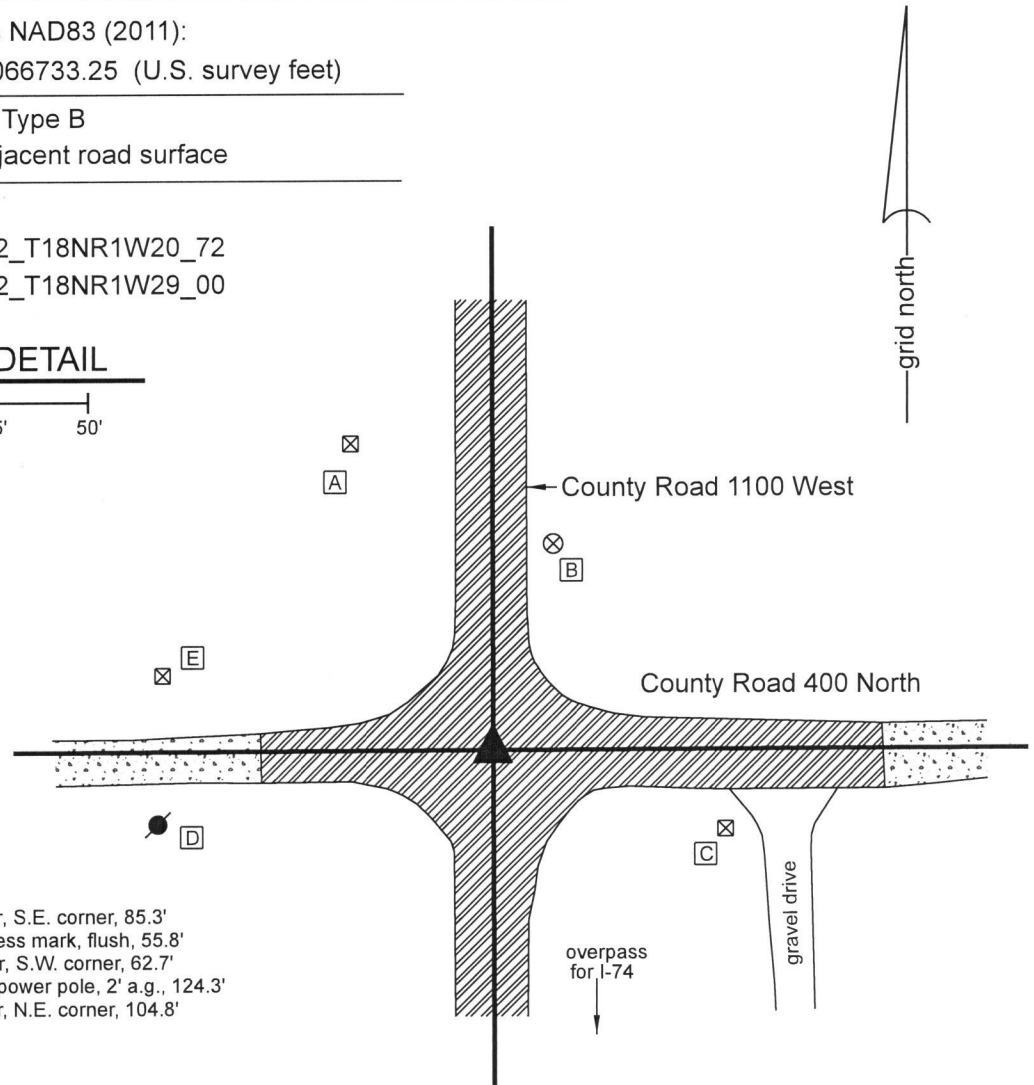
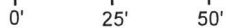
Indiana tie card references:

IN02\_T18NR2W19\_80 IN02\_T18NR1W20\_72

IN02\_T18NR2W30\_08 IN02\_T18NR1W29\_00

### CORNER WITNESS DETAIL

SCALE 1" = 50'



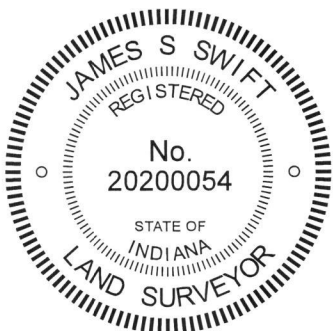
- A - INDOT R/W marker, S.E. corner, 85.3'
- B - Boone County witness mark, flush, 55.8'
- C - INDOT R/W marker, S.W. corner, 62.7'
- D - Mag nail in E. side power pole, 2' a.g., 124.3'
- E - INDOT R/W marker, N.E. corner, 104.8'

The INDOT Type B monument was found in place and held as marking the corner.

A BCS record dated February 28, 1887 states, with respect to this corner, "Took out the two small rocks and put one in 14,17,30 marked +." A BCS record dated September 23, 1912 confirms the presence of the stone called in the earlier record, stating, "Rock 14.17.30 +." A BCS tie card dated March 20, 1969 shows the corner as a "brass pin on monument, State Highway Department."

This corner falls in an area of fill in the approach to the bridge which represents the overpass of County Road 1100 West over Interstate 74. The found monument is an INDOT Type B monument matching the description in the 1969 BCS tie card. The plans for Interstate 74, approved by the Indiana State Highway Commission on March 22, 1963, show the overpass as project 74-2(42)35. The plans do not specifically call for a section corner but show P.O.T 42+53.5 of line S-13-A = P.O.T 50+00 of line S-14-A at the center of the intersection and show the intersecting lines as COUNTY ROAD (gravel) SECTION LINE. The found Type B monument is believed to represent this P.O.T. The corner was not excavated and the found monument was accepted as marking the corner. It is not known if this monument replaced, is above, or at variance with the position the stone called in the 1887 and 1912 BCS records. The monument is believed to be the same monument as is called in the 1969 BCS tie card.

This corner was originally established as a wood post in 1820.



*Kenneth E. Hedge*  
 \_\_\_\_\_  
 Kenneth E. Hedge, County Surveyor

*James S. Swift*  
 \_\_\_\_\_  
 James S. Swift, IN LS 20200054  
 March 13, 2019

Jackson Township

Section 19 T18N, R2W	Section 20 T18N, R2W
Section 30 T18N, R2W	Section 29 T18N, R2W

# SECTION CORNER RECORD

SW 400-1150

## BOONE COUNTY SURVEYOR'S OFFICE

State Plane grid coordinates NAD83 (2011):

North: 1724106.85 East: 3064099.31 (U.S. survey feet)

Type of monument: Harrison, 4" disk 'Section Corner'

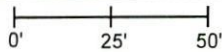
Depth: six inches below adjacent gravel road surface

Indiana tie card references:

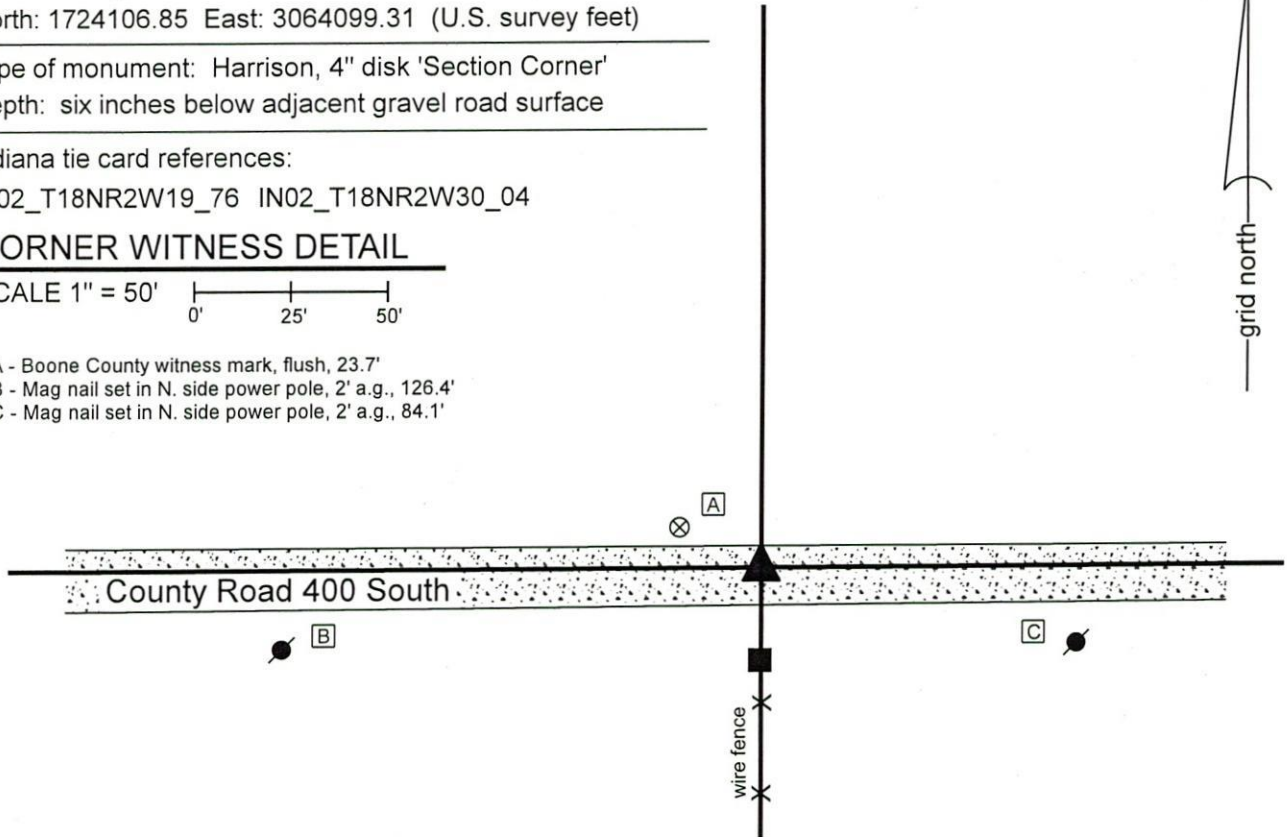
IN02\_T18NR2W19\_76 IN02\_T18NR2W30\_04

### CORNER WITNESS DETAIL

SCALE 1" = 50'



- A - Boone County witness mark, flush, 23.7'
- B - Mag nail set in N. side power pole, 2' a.g., 126.4'
- C - Mag nail set in N. side power pole, 2' a.g., 84.1'



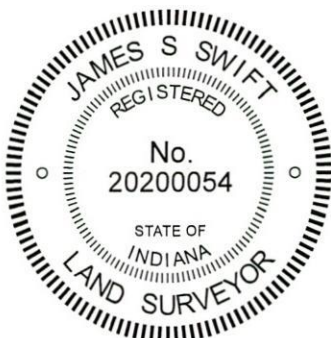
The Harrison monument was set in place of a stone found.

A BCS record dated September 23, 1912 states, with respect to this corner, "Rock 8-10-14 +." No recent BCS tie cards were found referencing this corner.

Excavation was performed at this corner on January 14, 2020. Prior to excavation, a section of railroad rail was found slightly below the surface of the gravel road. The rail was clearly leaning toward the west. No record of the rail was found. Excavation revealed a stone found at 8 inches below grade, near the north edge of the rail and in line with the old end post on the south side of the road. The stone was 10 inches tall by 14 inches E-W by 6 inches N-S. A vague mark was visible on the top of the stone. The stone was embedded in the clay layer below the road with the top of the stone coincident with the bottom of the road bed. The stone precisely matched two of the dimensions in the 1912 record and was 2 inches different than the third recorded dimension. The stone was accepted as being the same monument as called in the 1912 record and was held as marking the corner.

Both the stone and the rail were removed. A Harrison monument was set in place of the top, center of the stone. The top of the rail, as found leaning to the west, had been 1.1 foot south of the top, center of the stone.

This corner was originally established as a wood post in 1820.



*Kenneth E. Hedge*  
Kenneth E. Hedge, County Surveyor

*James S. Swift*  
James S. Swift, IN LS 20200054  
January 22, 2020

Jackson Township

Section 19  
T18N, R2W

Section 30  
T18N, R2W



# SECTION CORNER RECORD

SW 400-1200

## BOONE COUNTY SURVEYOR'S OFFICE

State Plane grid coordinates NAD83 (2011):

Corner 1: North: 1724182.63 East: 3061428.65 (U.S. survey feet)

Corner 2: North: 1724096.83 East: 3061429.18 (U.S. survey feet)

Corner 1: 5/8" rebar with aluminum cap stamped, 'Montgomery County Surveyor'

Corner 2: Harrison, 4" disk 'Section Corner', flush with adjacent ground

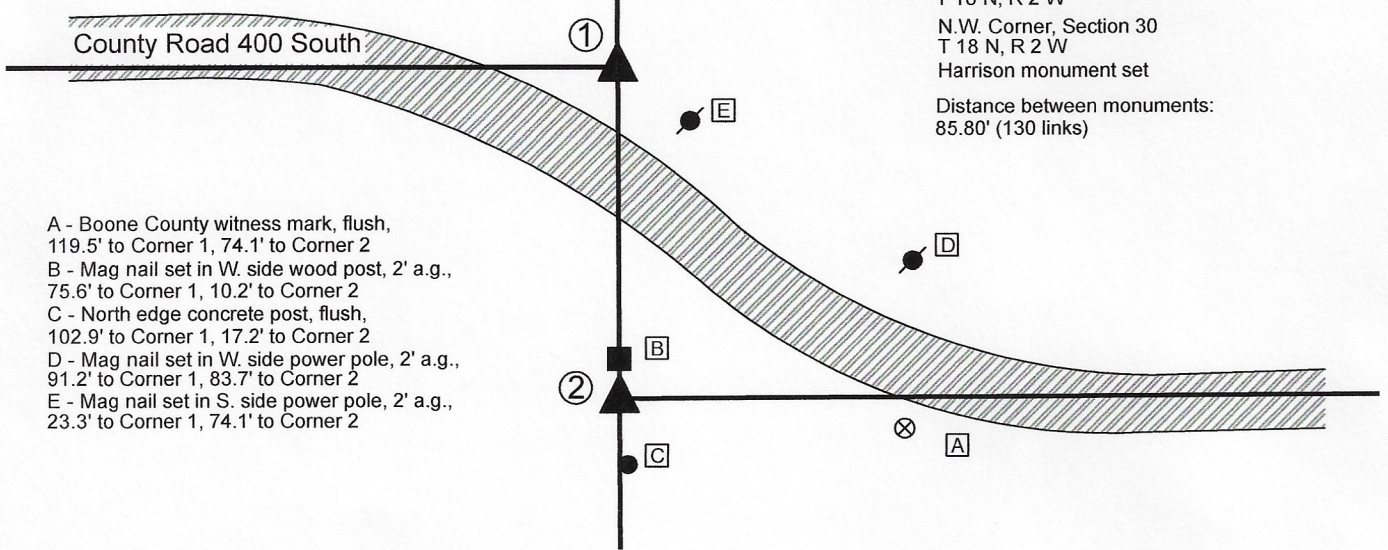
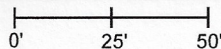
Indiana tie card references:

IN02\_T18NR2W19\_72 IN02\_T18NR3W24\_80

IN02\_T18NR3W25\_08 IN02\_T18NR2W30\_00

### CORNER WITNESS DETAIL

SCALE 1" = 50'



- ① S.E. Corner, Section 24  
T 18 N, R 3 W  
N.E. Corner, Section 25  
T 18 N, R 3 W  
Rebar found  
see Montgomery County dossier
- ② S.W. Corner, Section 19  
T 18 N, R 2 W  
N.W. Corner, Section 30  
T 18 N, R 2 W  
Harrison monument set  
Distance between monuments:  
85.80' (130 links)

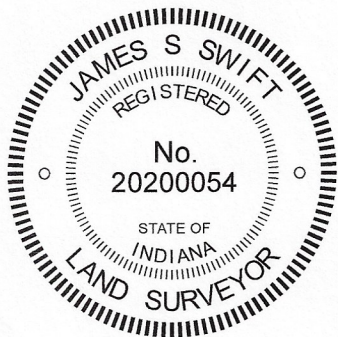
- A - Boone County witness mark, flush, 119.5' to Corner 1, 74.1' to Corner 2
- B - Mag nail set in W. side wood post, 2' a.g., 75.6' to Corner 1, 10.2' to Corner 2
- C - North edge concrete post, flush, 102.9' to Corner 1, 17.2' to Corner 2
- D - Mag nail set in W. side power pole, 2' a.g., 91.2' to Corner 1, 83.7' to Corner 2
- E - Mag nail set in S. side power pole, 2' a.g., 23.3' to Corner 1, 74.1' to Corner 2

The Harrison monument was set in place of a stone found.

A BCS record of uncertain date, shown on entries recorded September 23, 1912 and referencing a previous survey by A.K. Warren, states, with respect to this corner, "Re-est. from stumps, both witness trees. Rock, 8-14-16 +." No recent BCS tie cards were found referencing the corner. A survey recorded as Instrument 2007011620 in the Office of the Boone County Recorder shows the Corner 1 as IPFN and Corner 2 as WOOD FC COR POST. A Section Corner Dossier provided by the Montgomery County Surveyor, dated November 7, 2018, shows the standard corner (Corner 1) set at the record closing distance of 130 links north of the high point of a stone found.

This corner was excavated on October 1, 2020. The stone called in the Montgomery County dossier was found protruding approximately 3 inches above ground at the westerly extension of the approximate center of the county road to the east, in-line with a wood post to the north. The stone had a distinct high point and was found to measure, in total, 8 inches east-west by 14 inches north-south by 16 inches tall. An etched "+" mark was found on the west side of the stone, approximately 2 inches below the high point. The stone was accepted as being the same monument as is called for in the aforementioned record and was held as marking the corner. The stone was removed and replaced with a Harrison monument in the same position of the high point on October 1, 2020.

This corner was originally established as a wood post in 1820, 130 links south of the standard corner.



*Kenneth E. Hedge*  
Kenneth E. Hedge, County Surveyor

*James S. Swift*  
James S. Swift, IN LS 20200054  
October 6, 2020

Walnut Township  
Montgomery County

Jackson Township  
Boone County

Section 24 T18N, R3W	Section 19 T18N, R2W
Section 25 T18N, R3W	Section 30 T18N, R2W

# SECTION CORNER RECORD

# SW 450-1100

## BOONE COUNTY SURVEYOR'S OFFICE

State Plane grid coordinates NAD83 (2011):

North: 1721471.66 East: 3066739.21 (U.S. survey feet)

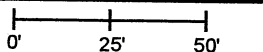
Type of monument: Harrison, 4" disk 'Section Corner'

Depth: six inches below adjacent road surface

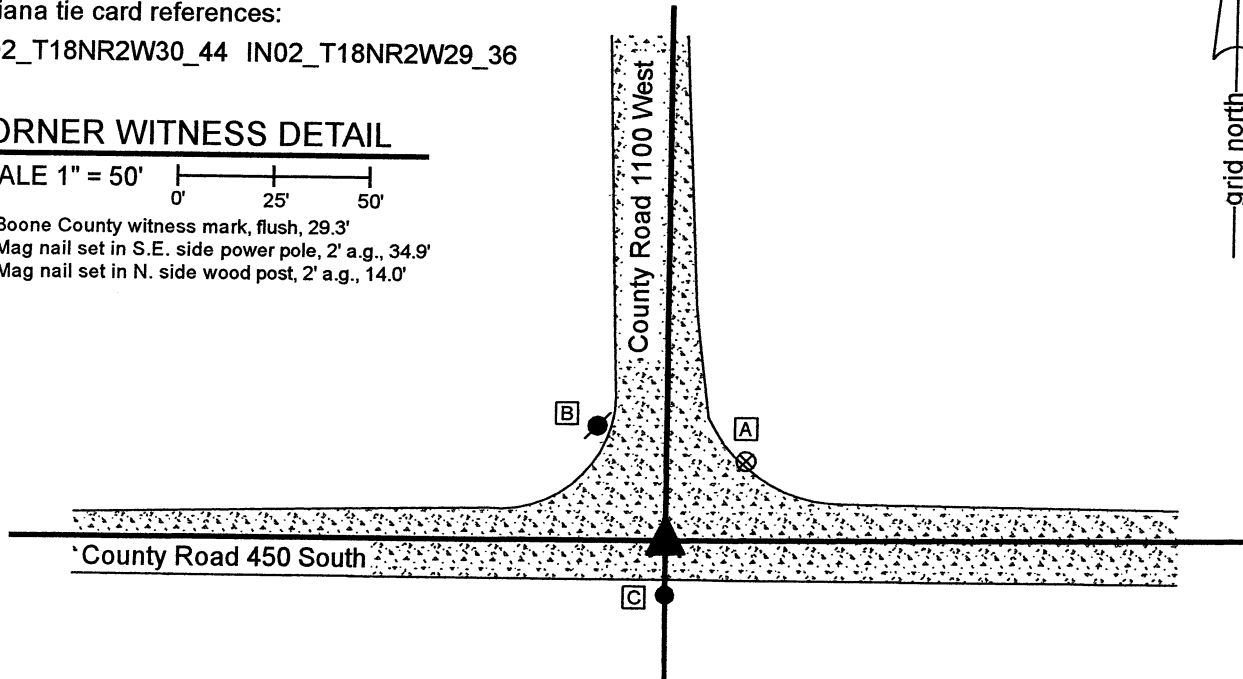
Indiana tie card references:

IN02\_T18NR2W30\_44 IN02\_T18NR2W29\_36

### CORNER WITNESS DETAIL

SCALE 1" = 50' 

- A - Boone County witness mark, flush, 29.3'
- B - Mag nail set in S.E. side power pole, 2' a.g., 34.9'
- C - Mag nail set in N. side wood post, 2' a.g., 14.0'

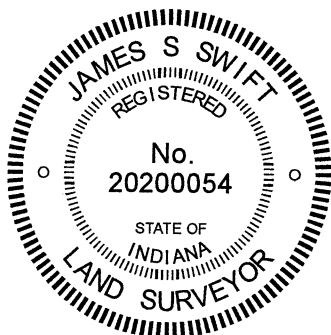


The Harrison monument was set per the best available evidence of the corner.

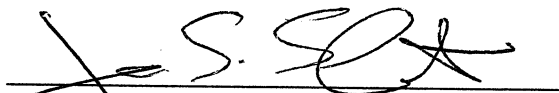
No specific descriptions of this corner were found in the BCS Surveyor's Record beyond the original establishment of the corner as a wood post in 1820. No recent BCS tie cards were found referencing the corner, nor were any surveys recorded in the Office of the Boone County Recorder found.

The plans for Interstate 74, approved by the Indiana State Highway Commission on March 22, 1963 show the overpass of County Road 1100 West over I-74 under project 74-2(42)35. The plans show line S-13-A as being along "County Road (gravel) Section Line." This corner represents the southerly terminus of that section line. As discussed on the documentation for BCS Corner SW 400-1100, certified March 13, 2019, an INDOT Type B monument was found and accepted as marking the station shown as said plans as POT 42+53.5, Line S-13-A. An iron pin was found in the gravel road at the station shown as POT 63+00, Line S-13-A on said plans. The two monuments agree with the plans and align with the center of the road as it crosses over I-74. However, the road bends slightly toward the west in the vicinity of POT 63+00 and the plans make no reference to any monument marking the southerly terminus of the section line, being the subject corner. The plans simply show the gravel road at POT 63+00 and do not show further information to the south.

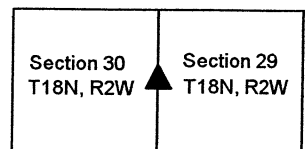
This corner was originally excavated on October 9, 2018. At that time an area 6 feet north-south by 6 feet east-west was excavated to the bottom of the road bed at the intersection of the two gravel roads. No evidence of a stone or other survey marker was found. The road was repaired without setting a monument, pending further investigation. It is noted that the southerly prolongation of line S-13-A, per the found INDOT monuments, falls 2.4 feet east of the local evidence of the corner, in the form of a wood post on the south side of the road and the physical intersection of the two gravel roads. Analysis of accessory evidence to the corner, in the form of occupation lines marking evidence of other aliquot corners and deed lines along County Road 450 South through Section 30 indicates that the local evidence of the corner fits better with the available accessory evidence than with the prolongation of line S-13-A. The evidence of the wood post on the south side of the road and the physical roadways to the north, east and west, was accepted as the best available evidence of the corner. A Harrison monument was set at the center of the intersection of the roads, immediately north of the wood post, on December 4, 2020. No further excavation, beyond the setting of the monument, was performed in 2020, as the intersection had been thoroughly excavated in October, 2018.



  
 Kenneth E. Hedge, County Surveyor

  
 James S. Swift, IN LS 20200054  
 December 15, 2020

Jackson Township





# SECTION CORNER RECORD

SW 500-1100

## BOONE COUNTY SURVEYOR'S OFFICE

State Plane grid coordinates NAD83 (2011):

North: 1718840.52 East: 3066755.32 (U.S. survey feet)

Type of monument: Harrison, 4" disk 'Section Corner'

Depth: One inch below adjacent road surface

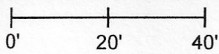
Indiana tie card references:

IN02\_T18NR2W29\_72 IN02\_T18NR2W30\_80

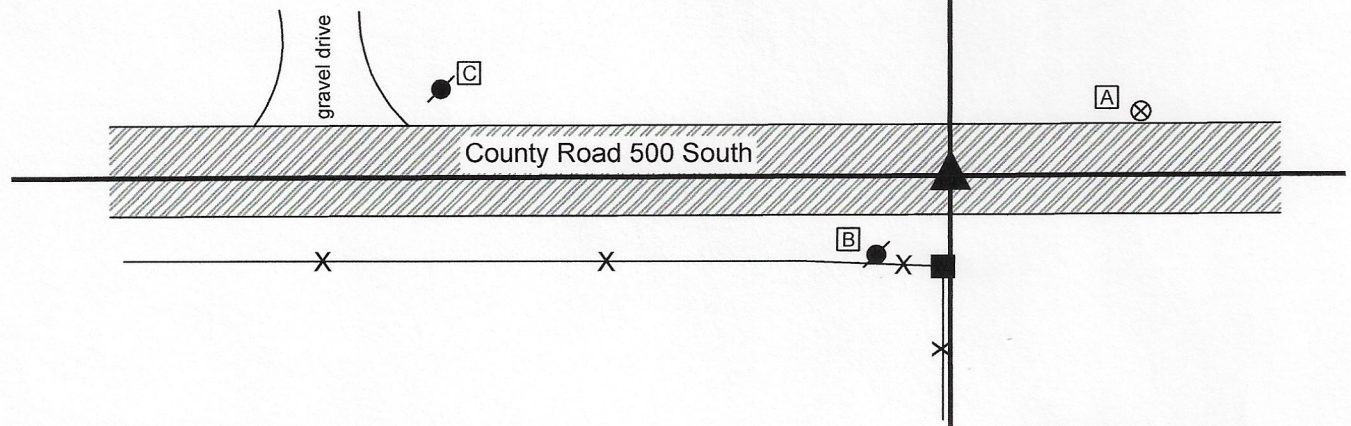
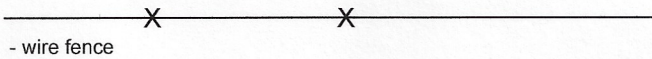
IN02\_T18NR2W31\_08 IN02\_T18NR2W32\_00

### CORNER WITNESS DETAIL

SCALE 1" = 40'



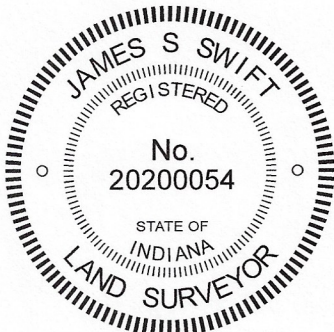
- A - Boone County witness mark, flush, 41.5'
- B - Mag nail set in N. side power pole, 2' a.g., 22.4'
- C - Mag nail set in E. side power pole, 2' a.g., 106.9'



The Harrison monument was set in place of a stone found.

A BCS record of September 19, 1895 states, with respect to this corner, "Set Rock 24x12x8." No recent BCS tie cards were found referencing this corner.

Excavation was performed at this corner on October 21, 2020. Prior to excavation, a rebar was found at the surface of the road, generally in-line with a fence to the south. Excavation revealed a stone found at 3 inches deep, slightly southeast of the found rebar. The stone appeared to be vertical but was broken as found, being in several pieces. The top of the stone had been embedded in the pavement layer of the road and most of the stone was in the fill material of the road bed. The stone was removed, measured, and found to be 12 inches north-south by 8 inches east-west by 15 inches tall. The bottom four inches of the stone had been embedded in the clay layer below the road bed. The stone matched two of the record dimensions but not the third. As noted above, the stone was broken as found. It is possible that a significant portion of the top of the rock had been broken previously, accounting for the fact that it was 15 inches tall, not 24 inches, per the 1895 record. The stone was held as marking the corner. A Harrison monument was set in place of the top, center of the stone as found. Both the stone and rebar were removed during excavation. The rebar had been 0.6 foot north and 1.2 foot west of the top, center of the stone.



*Kenneth E. Hedge*  
Kenneth E. Hedge, County Surveyor

*James S. Swift*  
James S. Swift, IN LS 20200054  
October 28, 2020

Jackson Township

Section 30 T18N, R2W	Section 29 T18N, R2W
Section 31 T18N, R2W	Section 32 T18N, R2W



# SECTION CORNER RECORD

SW 500-1150

## BOONE COUNTY SURVEYOR'S OFFICE

State Plane grid coordinates NAD83 (2011):

North: 1718834.61 East: 3064114.57 (U.S. survey feet)

Type of monument: Harrison, 4" disk 'Section Corner'

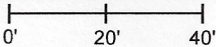
Depth: One inch below adjacent road surface

Indiana tie card references:

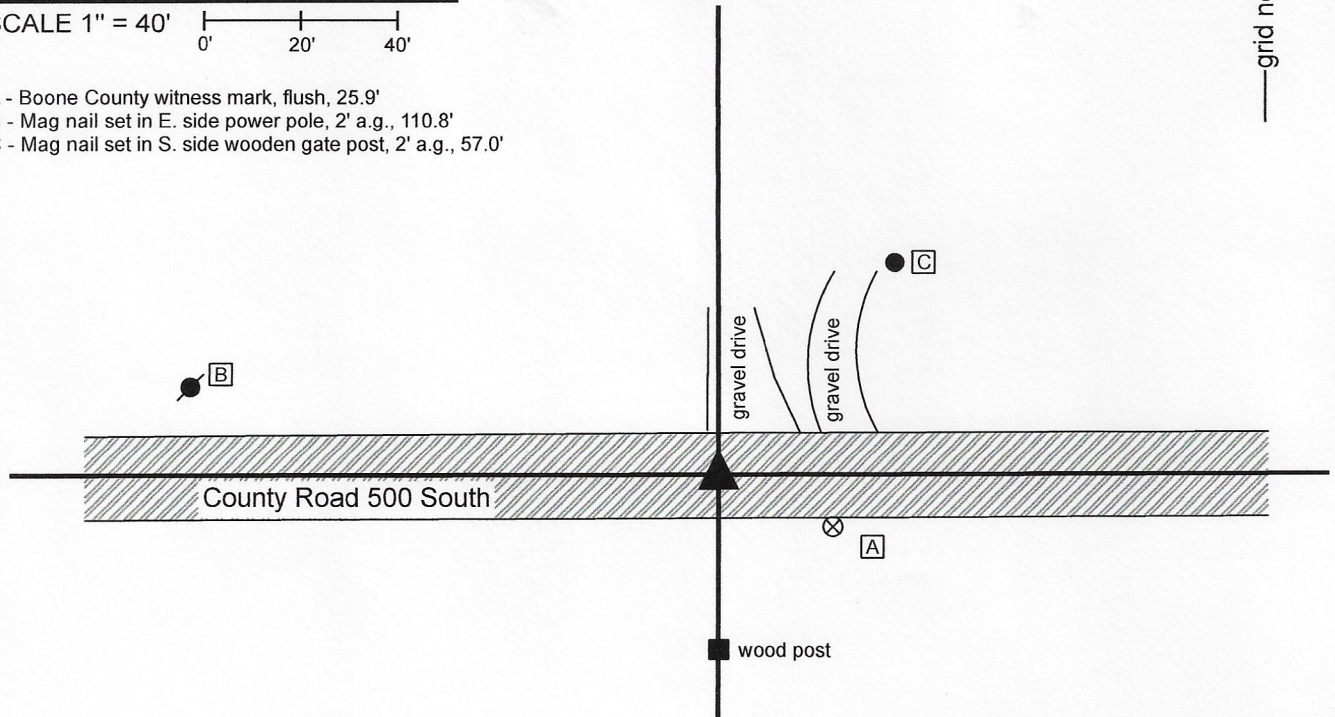
IN02\_T18NR2W30\_76 IN02\_T18NR2W31\_04

### CORNER WITNESS DETAIL

SCALE 1" = 40'



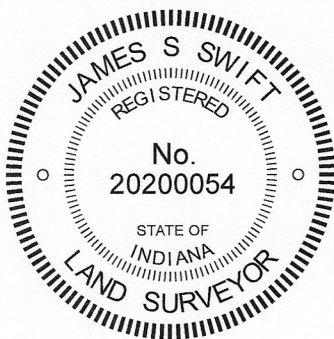
- A - Boone County witness mark, flush, 25.9'
- B - Mag nail set in E. side power pole, 2' a.g., 110.8'
- C - Mag nail set in S. side wooden gate post, 2' a.g., 57.0'




The Harrison monument was set over a stone found.

A BCS record dated August 27, 1885 states, with respect to this corner, "Reestablished. Set Rock 12x10x8 ... Corner is sharp point on east side" No recent BCS tie cards were found referencing this corner.

Excavation was performed at this corner on October 21, 2020. Prior to excavation, a railroad spike was found in the approximate center of County Road 500 South, in-line with a post on the south side of the road. This monument was set by this surveyor (Swift) as part of a survey in 2004, per the available visible evidence of the road and post to the south. Excavation revealed the stone described in the 1885 record at 14 inches deep, slightly north of the railroad spike. The top of the stone was broken off during excavation. The stone measured 8 inches E-W by 10 inches N-S. The height of the stone was measured as 9 inches along the south side. The E-W and N-S dimensions matched the 1885 record. The height did not, but as noted, the stone had been broken during excavation and appeared that it may have also been broken previously. The stone was embedded in the clay layer below the road, protruding approximately 6 inches into the bottom of the road bed. No specific marks were observed on the stone, as expected given the broken top. The sharp point on the east side was also not observed, presumed to have been broken off as well. The stone was held as marking the corner. It was left in place and a Harrison monument was set over the middle of the east side of the stone, in accordance with the reference to the east side in the 1885 record. The railroad spike, removed during excavation, had been 0.75 foot south and 0.2 foot east of the east side of the stone. This corner was originally established as a wood post in 1820.



  
Kenneth E. Hedge, County Surveyor

  
James S. Swift, IN LS 20200054  
October 28, 2020

Jackson Township

Section 30  
T18N, R2W

Section 31  
T18N, R2W



# SECTION CORNER RECORD

SW 500-1200

## BOONE COUNTY SURVEYOR'S OFFICE

State Plane grid coordinates NAD83 (2011):

Corner 1: North: 1718881.92 East: 3061464.10 (U.S. survey feet)

Corner 2: North: 1718829.19 East: 3061464.54 (U.S. survey feet)

Corner 1: 5/8 inch diameter rebar with aluminum cap stamped 'Montgomery County Surveyor' one inch deep

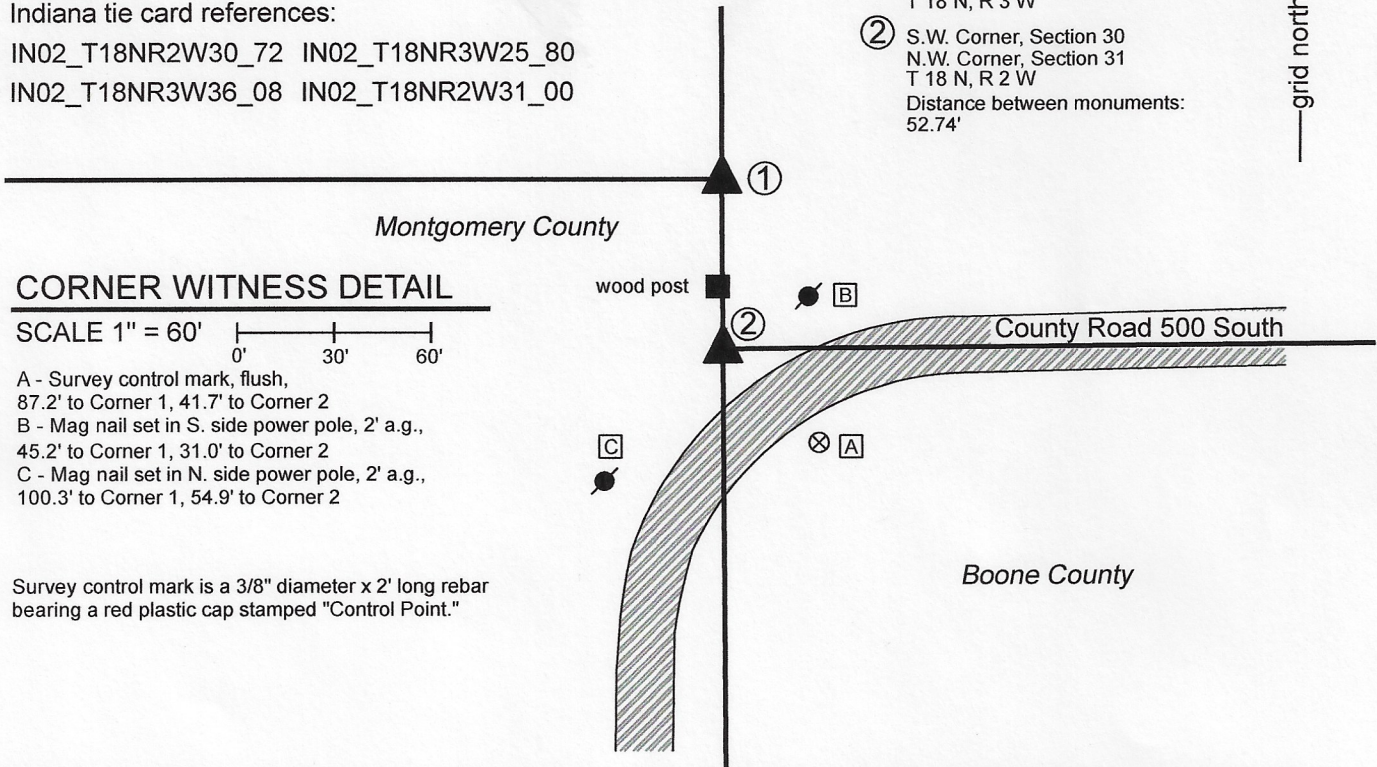
Corner 2: 5/8 inch diameter rebar with aluminum cap stamped 'Boone County Surveyor' flush, 24 inches long

Indiana tie card references:

IN02\_T18NR2W30\_72 IN02\_T18NR3W25\_80

IN02\_T18NR3W36\_08 IN02\_T18NR2W31\_00

- ① S.E. Corner, Section 25  
N.E. Corner, Section 36  
T 18 N, R 3 W
- ② S.W. Corner, Section 30  
N.W. Corner, Section 31  
T 18 N, R 2 W  
Distance between monuments:  
52.74'



### CORNER WITNESS DETAIL

SCALE 1" = 60'

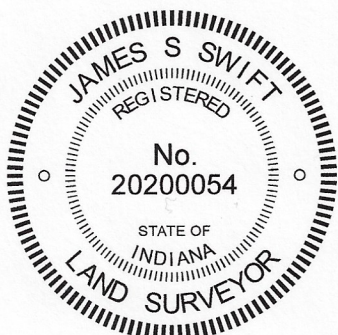
- A - Survey control mark, flush, 87.2' to Corner 1, 41.7' to Corner 2
- B - Mag nail set in S. side power pole, 2' a.g., 45.2' to Corner 1, 31.0' to Corner 2
- C - Mag nail set in N. side power pole, 2' a.g., 100.3' to Corner 1, 54.9' to Corner 2

Survey control mark is a 3/8" diameter x 2' long rebar bearing a red plastic cap stamped "Control Point."

The 5/8 inch diameter rebar with metal cap was set on the range line as defined by adjacent Montgomery County corners at the westerly prolongation of the center of County Road 500 South. No specific descriptions of this corner were found in the BCS Surveyor's Record beyond the original establishment of the corner as a wood post in 1820. No recent BCS tie cards were found referencing the corner. A Section Corner Dossier provided by the Office of the Montgomery County Surveyor shows the adjacent standard corner as being set in-line with wood post, at the record range line jog north of the center of County Road 500 North. This corner falls amidst numerous buried utility lines. No excavation was performed due to the presence of phone and fiber optic lines in the immediate vicinity of the corner, as marked by IUPPS. The specific position of the corner was established on the range line as defined by the Montgomery County rebar at the standard corner and a Montgomery County rebar at the east quarter corner of section 36, Township 18 North, Range 3 West. It is noted that the wood post on the north side of the road falls approximately 1 foot west of the line defined by the Montgomery County monuments. No explanation is offered for this. It is also noted that the position of the corner appears to be approximately 3 feet further south than the position held when the standard corner was established by Montgomery County. It is not clear why the corner would have been established further north, as the center of County Road 500 South is quite straight and extends to the position held hereon, based on GPS positions of the center of the road at numerous points between the quarter corner 1/2 mile east and the subject corner. The rebar with metal cap was set at the corner on November 6, 2020.

Walnut Township Montgomery County	Jackson Township Boone County
--------------------------------------	----------------------------------

Section 25 T18N, R3W	Section 30 T18N, R2W
Section 36 T18N, R3W	Section 31 T18N, R2W



*Kenneth E. Hedge*  
Kenneth E. Hedge, County Surveyor

*James S. Swift*  
James S. Swift, IN LS 20200054  
November 18, 2020