

# SECTION CORNER RECORD

## BOONE COUNTY SURVEYOR'S OFFICE

NW 100-400

State Plane grid coordinates NAD83 (2011):

North: 1750809.53 East: 3103635.14 (U.S. survey feet)

Type of monument: Plug in monument box, INDOT Type B

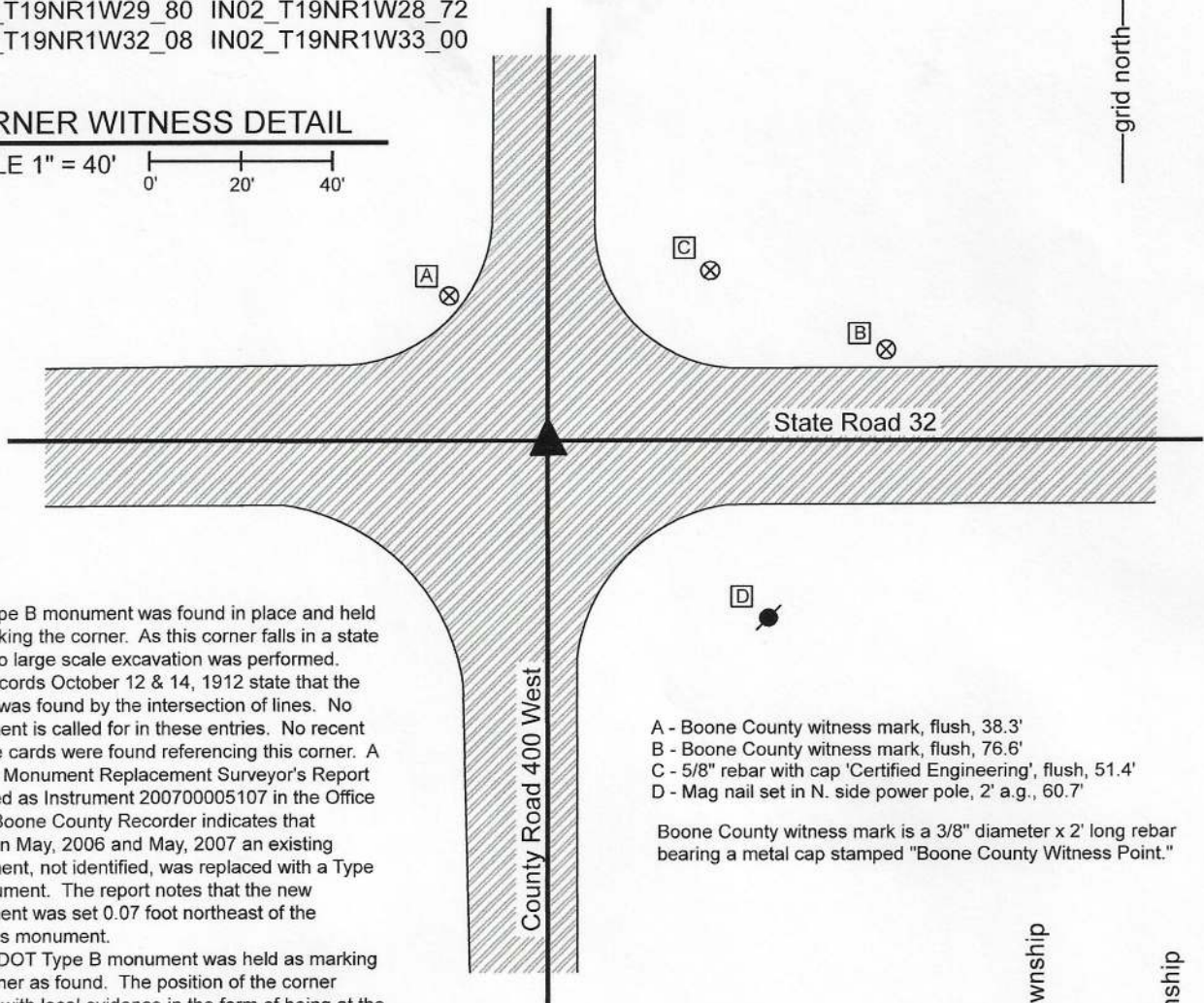
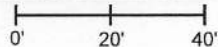
Depth: Flush with adjacent road surface

Indiana tie card references:

IN02\_T19NR1W29\_80 IN02\_T19NR1W28\_72  
 IN02\_T19NR1W32\_08 IN02\_T19NR1W33\_00

### CORNER WITNESS DETAIL

SCALE 1" = 40'



The Type B monument was found in place and held as marking the corner. As this corner falls in a state road, no large scale excavation was performed. BCS records October 12 & 14, 1912 state that the corner was found by the intersection of lines. No monument is called for in these entries. No recent BCS tie cards were found referencing this corner. A Survey Monument Replacement Surveyor's Report recorded as Instrument 200700005107 in the Office of the Boone County Recorder indicates that between May, 2006 and May, 2007 an existing monument, not identified, was replaced with a Type B monument. The report notes that the new monument was set 0.07 foot northeast of the previous monument.

The INDOT Type B monument was held as marking the corner as found. The position of the corner agrees with local evidence in the form of being at the intersection of the two roads. This appears to agree as well with the 1912 records.

This corner was originally established as a wood post in 1822.

- A - Boone County witness mark, flush, 38.3'
- B - Boone County witness mark, flush, 76.6'
- C - 5/8" rebar with cap 'Certified Engineering', flush, 51.4'
- D - Mag nail set in N. side power pole, 2' a.g., 60.7'

Boone County witness mark is a 3/8" diameter x 2' long rebar bearing a metal cap stamped "Boone County Witness Point."



*Kenneth E. Hedge*  
 Kenneth E. Hedge, County Surveyor

*James S. Swift*  
 James S. Swift, IN LS 20200054

May 11, 2020

Jefferson Township

Center Township

Section 29 T19N, R1W	Section 28 T19N, R1W
Section 32 T19N, R1W	Section 33 T19N, R1W

# SECTION CORNER RECORD

NW 100-450

## BOONE COUNTY SURVEYOR'S OFFICE

State Plane grid coordinates NAD83 (2011):

North: 1750812.22 East: 3100979.62 (U.S. survey feet)

Type of monument: Harrison, 4" disk 'Section Corner'

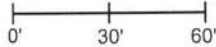
Depth: Flush with adjacent ground

Indiana tie card references:

IN02\_T19NR1W29\_76 IN02\_T19NR1W32\_04

### CORNER WITNESS DETAIL

SCALE 1" = 60'



A - Boone County witness mark, flush, 52.3'

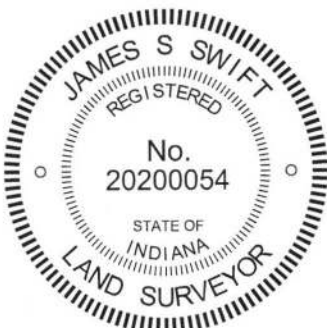
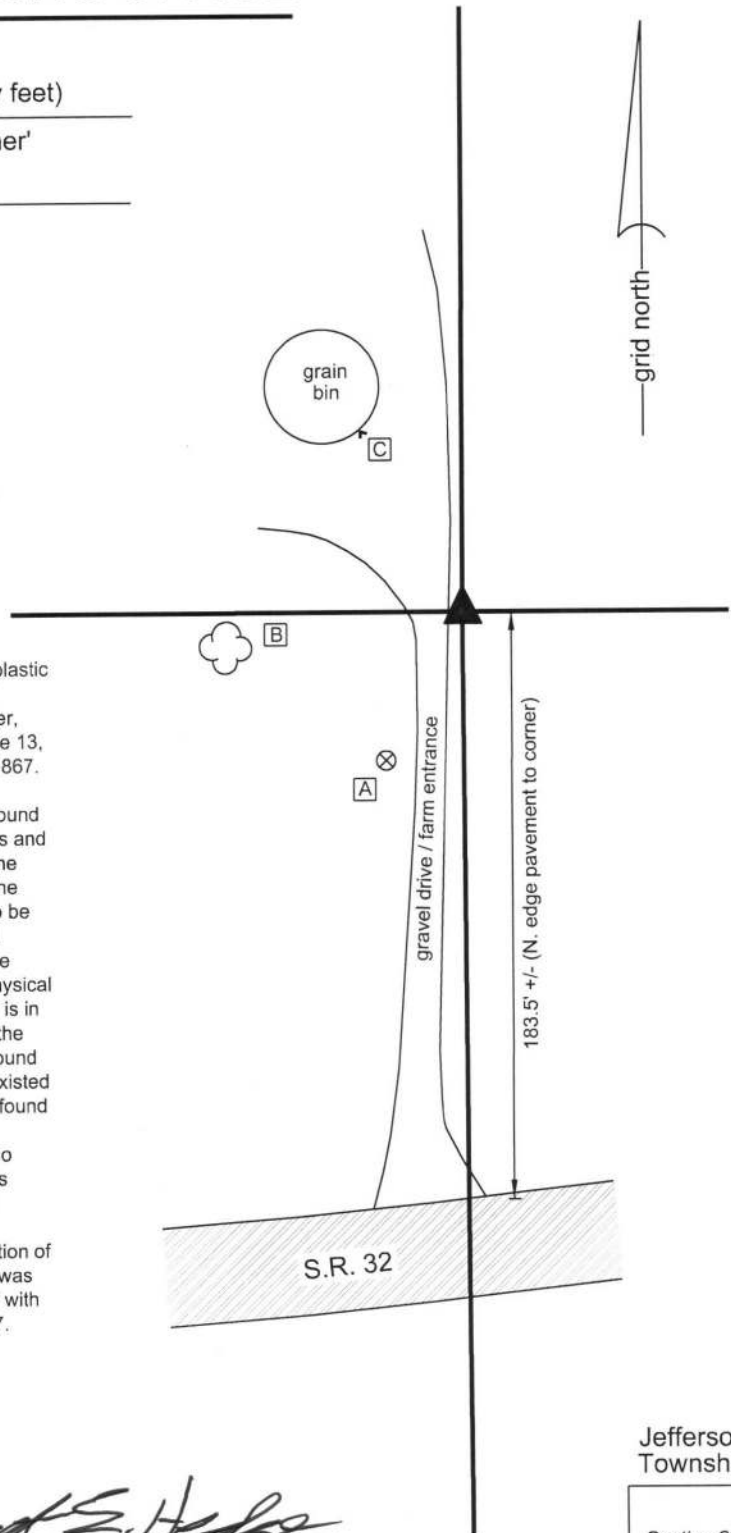
B - N.E. edge, 36 inch diameter Maple tree, 1' up, 66.8'

C - Anchor bolt, S.E. edge, grain bin, 65.4'

The Harrison monument was set in place of a 5/8 inch rebar with plastic cap stamped "Section Corner" found.

A BCS record of October 10, 1867 states, with respect to this corner, Reest'd from stump of both trees. Set stake." A BCS record of June 13, 1873 states "Reest'd from the stake driven in survey of Oct. 10th, 1867. Sect. 32." Set Rock 15x12x7."

No recent BCS tie cards were found referencing this corner. The found rebar is known to have been accepted as the corner for many years and fits with deed calls to the center of S.R. 32 recited in the deed for the adjoining property to the east, recorded in Instrument 0408581 in the Office of the Boone County Recorder. The plastic cap appeared to be substantially aged. The rebar was generally undisturbed as found, having been protected by the installation of a steel t-post next to the rebar by the adjacent landowner. Other than the rebar, the only physical evidence of the section lines in the immediate vicinity of the corner is in the form of a north-south field division separating the farm yard to the west from the tilled field to the east. No evidence of fencing was found along the line and it is believed that any fencing which may have existed along the north-south line has been removed for a long time. The found rebar was in-line with the field division. As the corner falls a short distance north of State Road 32, which generally runs east-west, no evidence of the section lines to the east and west of the corner was found, nor is it likely that any has existed in recent years. Several attempts to find the 1873 record stone with a probe beginning in October, 2015 yielded no further evidence of the corner. The position of the rebar fits well with proximate corners and local deed calls and was held as marking the corner. The rebar was removed and replaced with a Harrison monument in the same position on September 22, 2017. This corner was originally established as a wood post in 1822.



*Kenneth E. Hedge*  
Kenneth E. Hedge, County Surveyor

*James S. Swift*  
James S. Swift, IN LS 20200054  
October 3, 2017

Jefferson Township

Section 29  
T19N, R1W

Section 32  
T19N, R1W

# SECTION CORNER RECORD

## BOONE COUNTY SURVEYOR'S OFFICE

NW 100-500

State Plane grid coordinates NAD83 (2011):  
 North: 1750807.99 East: 3098335.91 (U.S. survey feet)

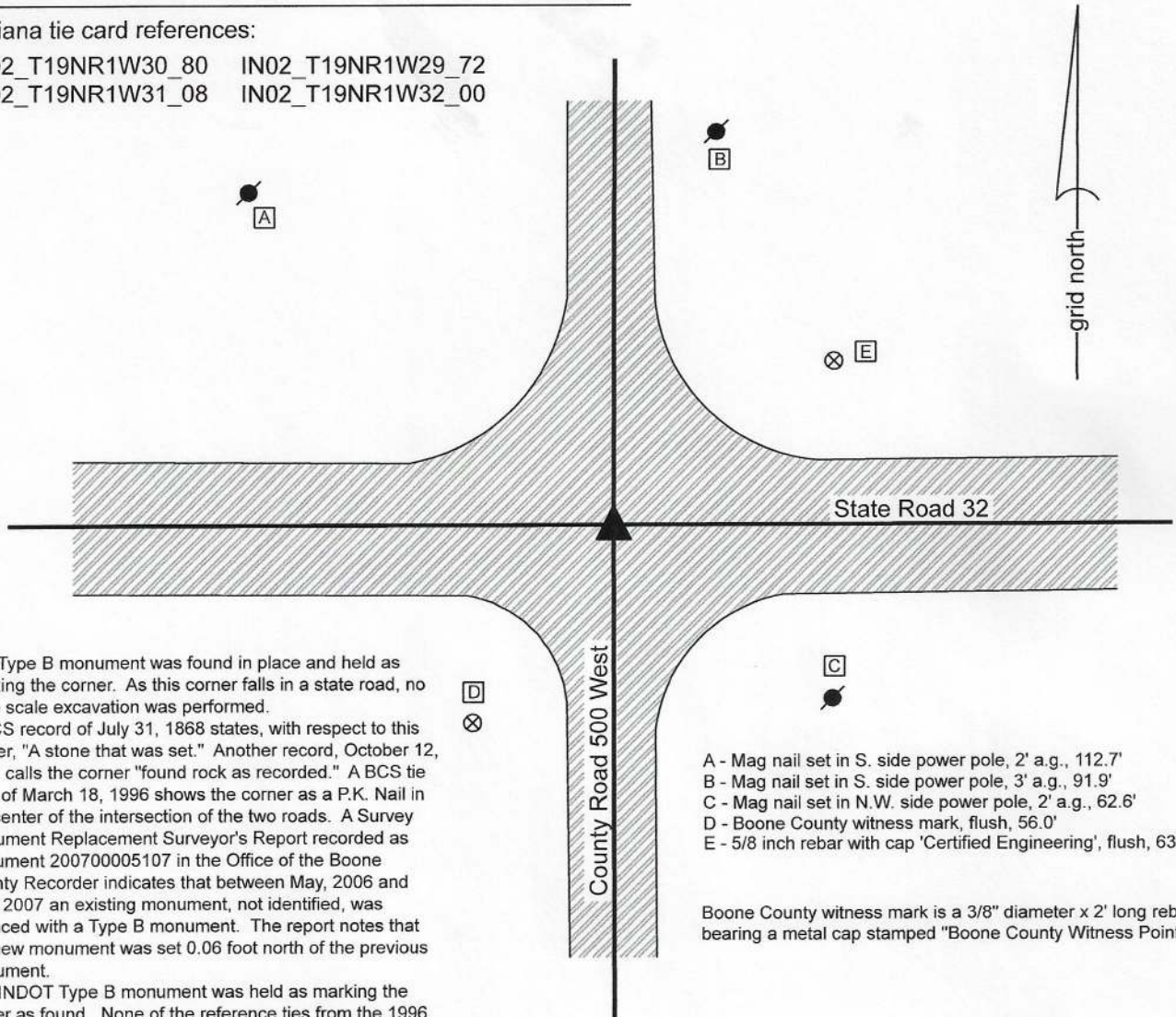
Type of monument: Plug in monument box, INDOT Type B  
 Depth: Flush with adjacent road surface

Indiana tie card references:

IN02\_T19NR1W30\_80 IN02\_T19NR1W29\_72  
 IN02\_T19NR1W31\_08 IN02\_T19NR1W32\_00

### CORNER WITNESS DETAIL

SCALE 1" = 40'



The Type B monument was found in place and held as marking the corner. As this corner falls in a state road, no large scale excavation was performed.

A BCS record of July 31, 1868 states, with respect to this corner, "A stone that was set." Another record, October 12, 1912 calls the corner "found rock as recorded." A BCS tie card of March 18, 1996 shows the corner as a P.K. Nail in the center of the intersection of the two roads. A Survey Monument Replacement Surveyor's Report recorded as Instrument 200700005107 in the Office of the Boone County Recorder indicates that between May, 2006 and May, 2007 an existing monument, not identified, was replaced with a Type B monument. The report notes that the new monument was set 0.06 foot north of the previous monument.

The INDOT Type B monument was held as marking the corner as found. None of the reference ties from the 1996 tie card were found. It is assumed, but not proven, that the Type B is in the same position as the previously held PK Nail.

This corner was originally established as a wood post in 1822.

- A - Mag nail set in S. side power pole, 2' a.g., 112.7'
- B - Mag nail set in S. side power pole, 3' a.g., 91.9'
- C - Mag nail set in N.W. side power pole, 2' a.g., 62.6'
- D - Boone County witness mark, flush, 56.0'
- E - 5/8 inch rebar with cap 'Certified Engineering', flush, 63.1'

Boone County witness mark is a 3/8" diameter x 2' long rebar bearing a metal cap stamped "Boone County Witness Point."



*Kenneth E. Hedge*  
 Kenneth E. Hedge, County Surveyor

*James S. Swift*  
 James S. Swift, IN LS 20200054  
 May 11, 2020

Jefferson Township

Section 30 T19N, R1W	Section 29 T19N, R1W
Section 31 T19N, R1W	Section 32 T19N, R1W

# SECTION CORNER RECORD

## BOONE COUNTY SURVEYOR'S OFFICE

NW 100-550

State Plane grid coordinates NAD83 (2011):  
 North: 1750803.23 East: 3095695.08 (U.S. survey feet)

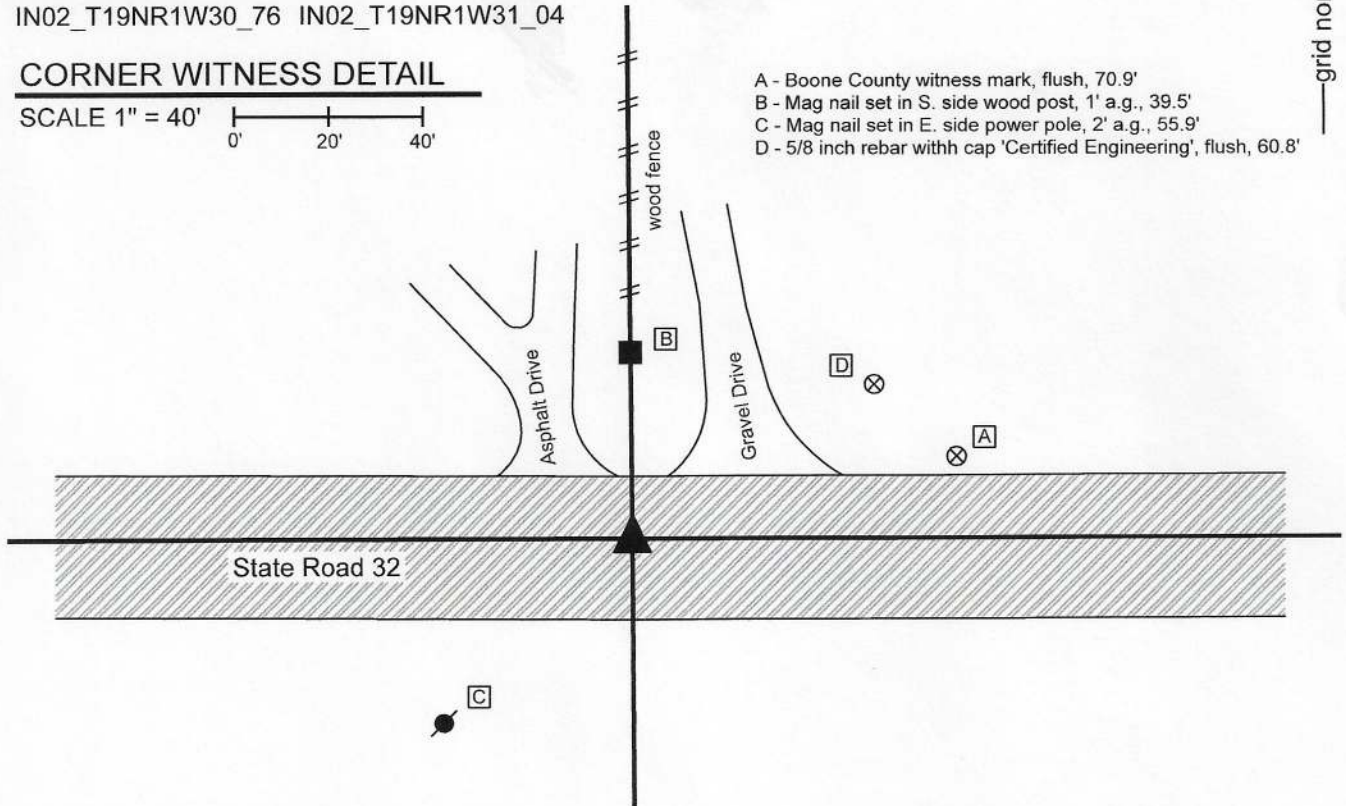
Type of monument: plug in monument box, INDOT Type B  
 Depth: flush with road surface

Indiana tie card references:  
 IN02\_T19NR1W30\_76 IN02\_T19NR1W31\_04

### CORNER WITNESS DETAIL

SCALE 1" = 40'

- A - Boone County witness mark, flush, 70.9'
- B - Mag nail set in S. side wood post, 1' a.g., 39.5'
- C - Mag nail set in E. side power pole, 2' a.g., 55.9'
- D - 5/8 inch rebar with cap 'Certified Engineering', flush, 60.8'



The Type B monument was found in place and held as marking the corner. As this corner falls in a state road, no large scale excavation was performed.

ABCS record of March 9, 1880 states, with respect to this corner, "Reestd. Set rock 40x15x20 plus on top." BCS tie cards of 1994, 1995 and 1996 show the corner as a P.K. Nail in the approximate center of the state road, in-line with an occupation line to the north. A Survey Monument Replacement Surveyor's Report recorded as Instrument 200700005107 in the Office of the Boone County Recorder indicates that between May, 2006 and May, 2007 an existing monument, not identified, was replaced with a Type B monument. The report notes that the new monument was set 0.09 foot northwest of the previous monument.

The INDOT Type B monument was held as marking the corner as found. The position of the corner agrees with local evidence in the form of being at the the center of the east-west road and being in-line wih a wood post and fence to the north. This appears to agree as well with the 1912 records. This corner was originally established as a wood post in 1822.



*Kenneth E. Hedge*  
 Kenneth E. Hedge, County Surveyor

*James S. Swift*  
 James S. Swift, IN LS 20200054  
 May 11, 2020

Jefferson  
 Township

Section 30  
 T19N, R1W

Section 31  
 T19N, R1W

# SECTION CORNER RECORD

NW 100-600

## BOONE COUNTY SURVEYOR'S OFFICE

State Plane grid coordinates NAD83 (2011) U.S. Survey feet:

Corner 1: North: 1750828.27 East: 3093116.03

Corner 2: North: 1750797.91 East: 3093116.12

Corner 1: Mag nail with washer, flush

Corner 2: INDOT Type B Monument

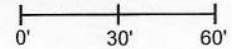
Indiana tie card references:

IN02\_T19NR2W25\_80 IN02\_T19NR1W30\_72

IN02\_T19NR2W36\_08 IN02\_T19NR1W31\_00

### CORNER WITNESS DETAIL

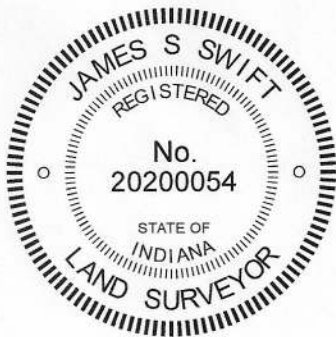
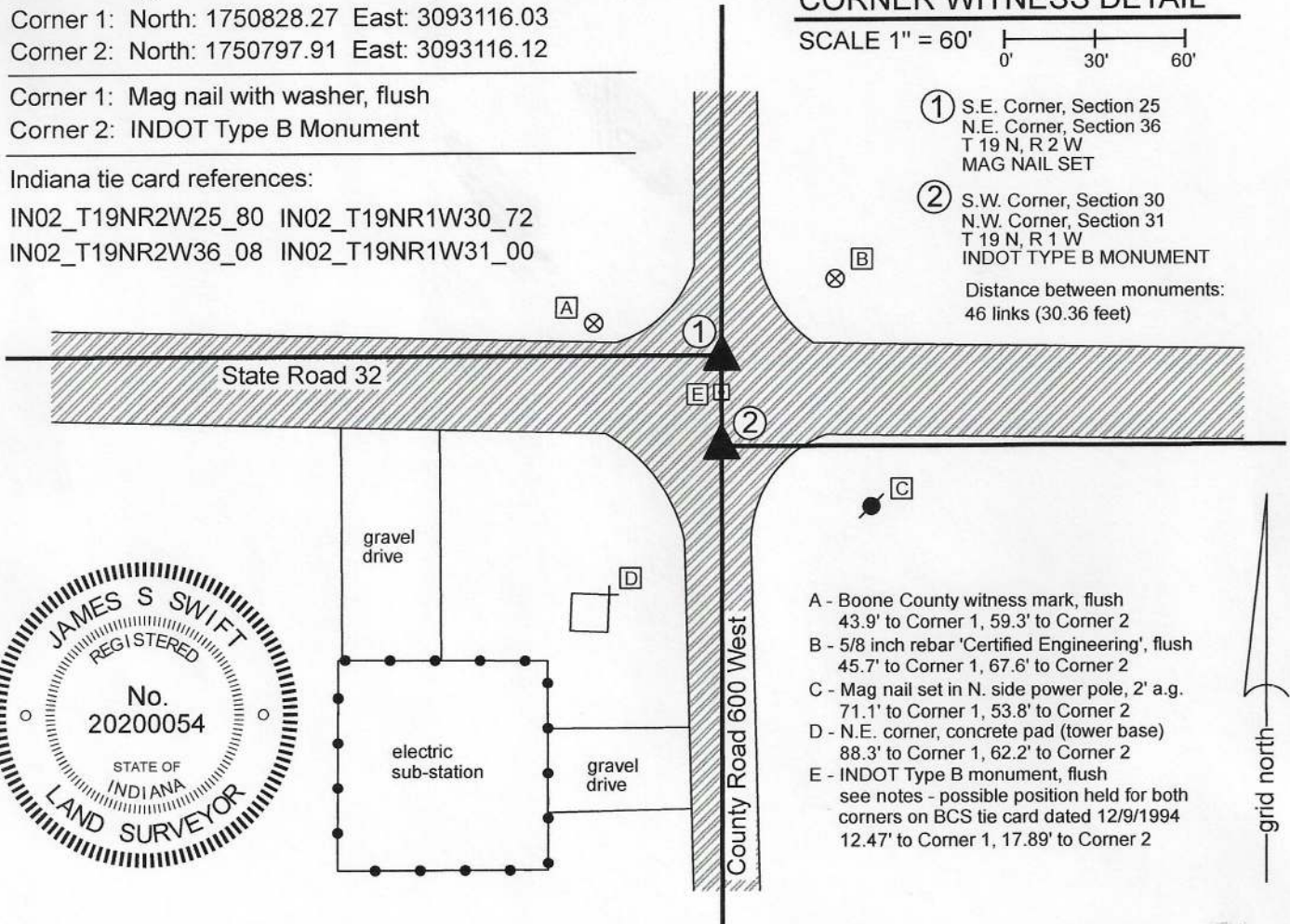
SCALE 1" = 60'



① S.E. Corner, Section 25  
N.E. Corner, Section 36  
T 19 N, R 2 W  
MAG NAIL SET

② S.W. Corner, Section 30  
N.W. Corner, Section 31  
T 19 N, R 1 W  
INDOT TYPE B MONUMENT

Distance between monuments:  
46 links (30.36 feet)



- A - Boone County witness mark, flush  
43.9' to Corner 1, 59.3' to Corner 2
- B - 5/8 inch rebar 'Certified Engineering', flush  
45.7' to Corner 1, 67.6' to Corner 2
- C - Mag nail set in N. side power pole, 2' a.g.  
71.1' to Corner 1, 53.8' to Corner 2
- D - N.E. corner, concrete pad (tower base)  
88.3' to Corner 1, 62.2' to Corner 2
- E - INDOT Type B monument, flush  
see notes - possible position held for both  
corners on BCS tie card dated 12/9/1994  
12.47' to Corner 1, 17.89' to Corner 2

The INDOT Type B monument was found and held as marking Corner 2. The Mag nail with washer "Boone County Surveyor" marking Corner 1 was set at the record federal closing distance of 46 links (30.36 feet) northerly of Corner 2.

The original federal notes of 1822 show the closing corner (Corner 2) as being 46 links south of the standard corner (Corner 1). A BCS record of September 4, 1865 states, with respect to Corner 1 and referencing Corner 2, "Reestablished by measuring the lap 46 links from the corner of Sects. 30 & 31. Set a Rock 12, 11, 7 marked." No specific descriptions of Corner 2 were found in the BCS Surveyor's Record beyond the original establishment of the corner in 1822. A BCS tie card dated December 9, 1994 shows Corner 1 as a P.K. Nail with washer. The sketch does not appear to take into account the 46 links offset at Corner 1 and demonstrates the corner to be at the center of the intersection of the two roads. Although the tie card states that the specific corner is the standard corner (Corner 1), the sketch demonstrates the section line bearing east and west from the corner with no offset.

Two INDOT Type B monuments were found at this intersection. Both monuments are referenced on a Survey Monument Replacement Surveyor's Report recorded as Instrument 200700005107 in the Office of the Boone County Recorder. The monuments are separated by 17.9 feet, significantly less than the original federal offset of 46 links (30.36 feet) which was confirmed by the 1865 record. Analysis of the relative positions of the found Type B monuments with adjacent corners in all cardinal directions, taking into account original federal dimensions and dimensions shown in the 1865 record clearly indicates that the southerly of the two monuments is in a reasonable position expected for Corner 2, but the northerly of the two monuments is south of the expected position for Corner 1. No uncertainty exists as to the offset, being 46 links or 30.36 feet.

Distance ties shown on the 1994 BCS tie card indicate that the northerly of the Type B monuments was likely set in the same position as the P.K. Nail shown on the 1994 tie card. As noted above, this tie card does not take into account the 46 links federal offset on the range line, treating the two separate corners as a common corner and is clearly in error on that count. No excavation was performed at these corners, as they both fall within the state highway. The southerly of the two Type B monuments was held as marking Corner 2. Corner 1 was established at 30.36 feet north thereof on the prolongation of the line connecting the east quarter corner of section 36 (see BCS Corner NW 050-600) with the monument held as marking Corner 2. A mag nail with washer stamped 'Boone County Surveyor' was set at this position on June 17, 2020. The Type B monument previously held as marking this corner is 12.5 feet south. Another mag nail, unknown origin, was found 16.1 feet north of Corner 2.

Corner 1 was originally established as a wood post in 1819. Corner 2 was established as a wood post in 1822.

### Jefferson Township

Section 25 T19N, R2W	Section 30 T19N, R1W
Section 36 T19N, R2W	Section 31 T19N, R1W

*Kenneth E. Hedge*  
Kenneth E. Hedge, County Surveyor

*James S. Swift*  
James S. Swift, IN LS 20200054 August 5, 2020

# SECTION CORNER RECORD

## BOONE COUNTY SURVEYOR'S OFFICE

NW 150-400

State Plane grid coordinates NAD83 (2011):

North: 1753429.67 East: 3103639.68 (U.S. survey feet)

Type of monument: Harrison, 4" disk 'Section Corner'

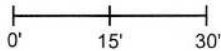
Depth: Six inches below adjacent gravel road surface

Indiana tie card references:

IN02\_T19NR1W29\_44 IN02\_T19NR1W28\_36

### CORNER WITNESS DETAIL

SCALE 1" = 30'



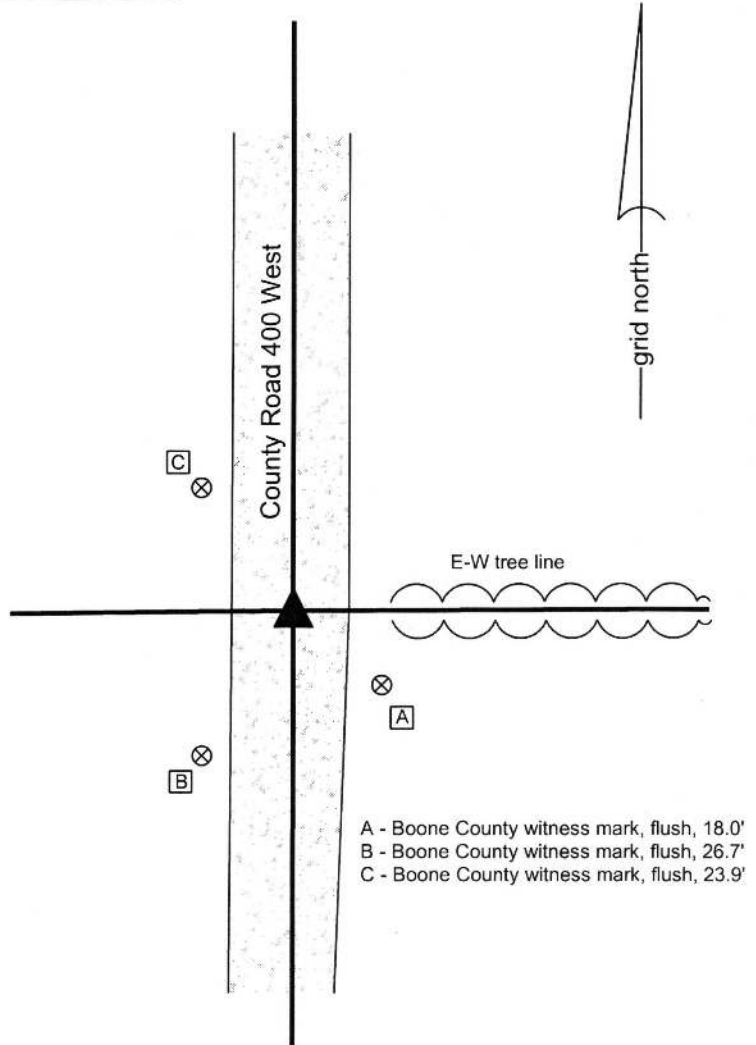
The Harrison monument was set in place of a vertical section of railroad rail found.

No specific descriptions of the corner were found in the BCS Surveyor's Record. A BCS tie card dated October, 1975 states "No Stone - Rail Set" and shows the corner as being at the midpoint between fence corner posts on the east and west sides of the road.

This corner was excavated on June 10, 2015. Prior to excavation, a vertical section of railroad rail was found at 6 inches below grade in the center of the gravel road at the westerly prolongation of an old tree line to the east. Though the corner posts shown on the 1975 tie card are no longer present, it is believed that the found rail is the same monument called for on the 1975 record. Excavation of an area extending 4 feet North, 4 feet South, 3.5 feet East, and 3.5 feet West of the rail yielded no further evidence of the corner.

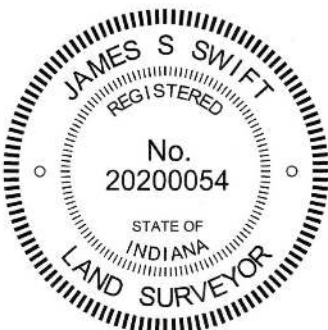
The rail was accepted as providing the best available evidence of the corner. The rail was removed during excavation and was replaced with a Harrison monument set in the same position.

This corner was originally established as a wood post in 1829.



- A - Boone County witness mark, flush, 18.0'
- B - Boone County witness mark, flush, 26.7'
- C - Boone County witness mark, flush, 23.9'

Boone County witness mark is a 3/8" diameter x 2' long rebar bearing a metal cap stamped "Boone County Witness Point."



*Kenneth E. Hedge*  
Kenneth E. Hedge, County Surveyor

*James S. Swift*  
James S. Swift, IN LS 20200054  
March 24, 2016

Jefferson Township  
Center Township

Section 29 T19N, R1W	Section 28 T19N, R1W
-------------------------	-------------------------

# SECTION CORNER RECORD

NW 150-500

## BOONE COUNTY SURVEYOR'S OFFICE

State Plane grid coordinates NAD83 (2011):

North: 1753445.69 East: 3098338.90 (U.S. survey feet)

Type of monument: Harrison, 4" disk 'Section Corner'

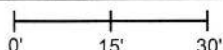
Depth: One inch below adjacent road surface

Indiana tie card references:

IN02\_T19N1W29\_36 IN02\_T19NR1W30\_44

### CORNER WITNESS DETAIL

SCALE 1" = 30'



A - Boone County witness mark, flush, 24.3'

B - Mag nail set in W. side power pole, 2' a.g., 24.8'

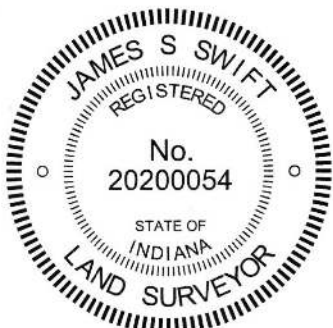
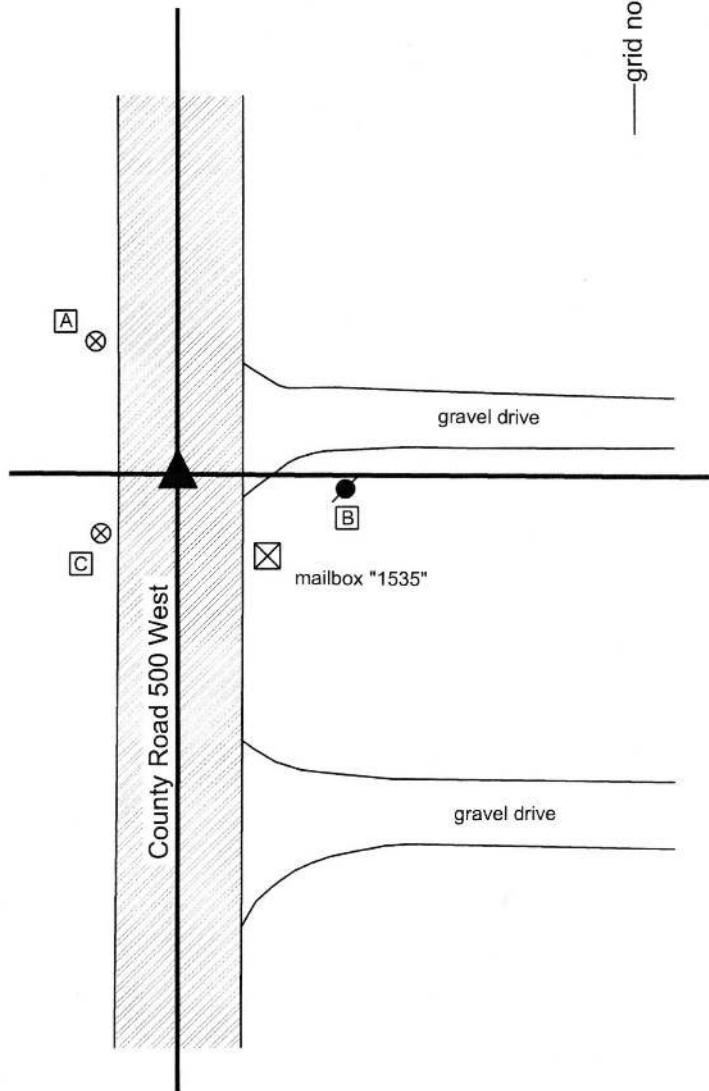
C - Boone County witness mark, flush, 15.1'

Boone County witness mark is a 3/8" diameter x 2' long rebar bearing a metal cap stamped "Boone County Witness Point."

The Harrison monument was set over a stone found. A BCS record dated October 12, 1912 states "Set rock in line 18x15x7 marked +." A BCS tie card dated September 9, 1968 states "No stone."

This corner was excavated on June 9, 2015. Prior to excavation, a 5/8 inch diameter rebar with a red plastic cap (markings illegible) was found at the surface of the road. Excavation revealed a vertical section of railroad rail found at 7 inches deep. The center of mass of the top of the rail, the point on the rail known to have been held as the exact position of the corner by the BCS crews which set the rails, was 0.2 foot south of the rebar. It is considered most likely that the rail was set in association with the creation of the 1968 tie card. Further excavation revealed a stone found at 12 inches deep. With 8 inches of the top of the stone exposed, it measured 15 inches N-S by 7 inches E-W. The stone was embedded in the clay layer below the road bed, with the top of the stone coincident with the bottom of the road bed. With 8 inches exposed, the stone remained entirely stable in the clay, indicating that it was yet larger in the vertical dimension. The east side of the stone was flat and vertical while the west side of the stone was more sloping. The stone had a distinct N-S ridge across the top and an etched notch was found at the center of the ridge, at the top, center point of the stone. The stone was accepted as being the same monument called for in the 1912 record and was held as marking the corner. The stone was left in place and a Harrison monument was set over the etched mark. The rebar and rail were both removed during excavation. The final position for the corner is 1.0 foot North and 0.4 foot East of the position of the rebar found prior to excavation.

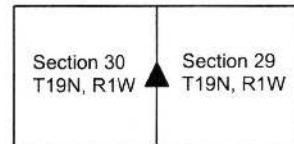
This corner was originally established as a wood post in 1829.



*Kenneth E. Hedge*  
Kenneth E. Hedge, County Surveyor

*James S. Swift*  
James S. Swift, IN LS 20200054  
March 24, 2016

Jefferson  
Township



PHOTOGRAPHIC DOCUMENTATION

Date of photography: June 9, 2015

The stone as it was originally exposed.



The stone more fully exposed.



The stone exposed, view from the west.



View from the south, looking across the stone and north along County Road 500 West.



The top of the stone from above after fill material was packed back around the stone.



For details and documentation, refer to related sheet "Section Corner Record."



# SECTION CORNER RECORD

NW 200-400

## BOONE COUNTY SURVEYOR'S OFFICE

State Plane grid coordinates NAD83 (2011):  
 North: 1756068.65 East: 3103638.65 (U.S. survey feet)

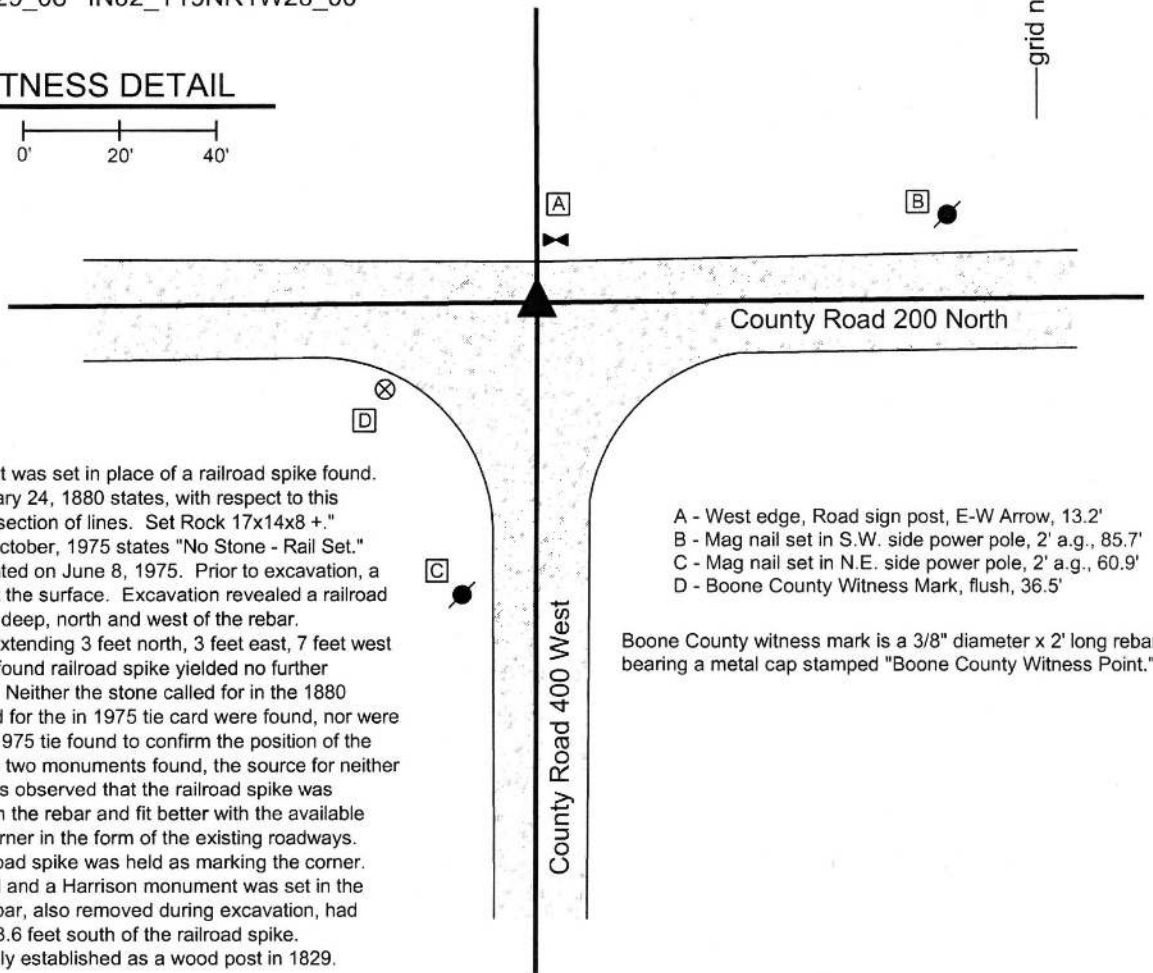
Type of monument: Harrison, 4" disk 'Section Corner'  
 Depth: six inches below adjacent gravel road surface

Indiana tie card references:  
 IN02\_T19NR1W20\_80 IN02\_T19NR1W21\_72  
 IN02\_T19NR1W29\_08 IN02\_T19NR1W28\_00



### CORNER WITNESS DETAIL

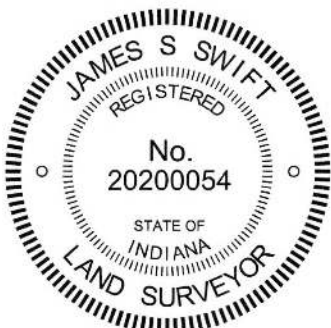
SCALE 1" = 40'



The Harrison monument was set in place of a railroad spike found. A BCS record of February 24, 1880 states, with respect to this corner, "Reestb at intersection of lines. Set Rock 17x14x8 +." A BCS tie card dated October, 1975 states "No Stone - Rail Set." This corner was excavated on June 8, 1975. Prior to excavation, a rebar was found bent at the surface. Excavation revealed a railroad spike found at 8 inches deep, north and west of the rebar. Excavation of an area extending 3 feet north, 3 feet east, 7 feet west and 7 feet south of the found railroad spike yielded no further evidence of the corner. Neither the stone called for in the 1880 record nor the rail called for the in 1975 tie card were found, nor were sufficient ties from the 1975 tie found to confirm the position of the rail. With respect to the two monuments found, the source for neither of which is known, it was observed that the railroad spike was significantly deeper than the rebar and fit better with the available local evidence of the corner in the form of the existing roadways. The position of the railroad spike was held as marking the corner. The spike was removed and a Harrison monument was set in the same position. The rebar, also removed during excavation, had been 1.0 foot east and 3.6 feet south of the railroad spike. This corner was originally established as a wood post in 1829.

- A - West edge, Road sign post, E-W Arrow, 13.2'
- B - Mag nail set in S.W. side power pole, 2' a.g., 85.7'
- C - Mag nail set in N.E. side power pole, 2' a.g., 60.9'
- D - Boone County Witness Mark, flush, 36.5'

Boone County witness mark is a 3/8" diameter x 2' long rebar bearing a metal cap stamped "Boone County Witness Point."



*Kenneth E. Hedge*  
 Kenneth E. Hedge, County Surveyor

*James S. Swift*  
 James S. Swift, IN LS 20200054  
 March 24, 2016

Jefferson Township	Center Township
Section 20 T19N, R1W	Section 21 T19N, R1W
Section 29 T19N, R1W	Section 28 T19N, R1W

# SECTION CORNER RECORD

NW 200-450

## BOONE COUNTY SURVEYOR'S OFFICE

State Plane grid coordinates NAD83 (2011):

North: 1756048.33 East: 3100985.010 (U.S. survey feet)

Type of monument: Harrison, 4" disk 'Section Corner'

Depth: six inches below adjacent gravel road surface

Indiana tie card references:

IN02\_T19NR1W20\_72

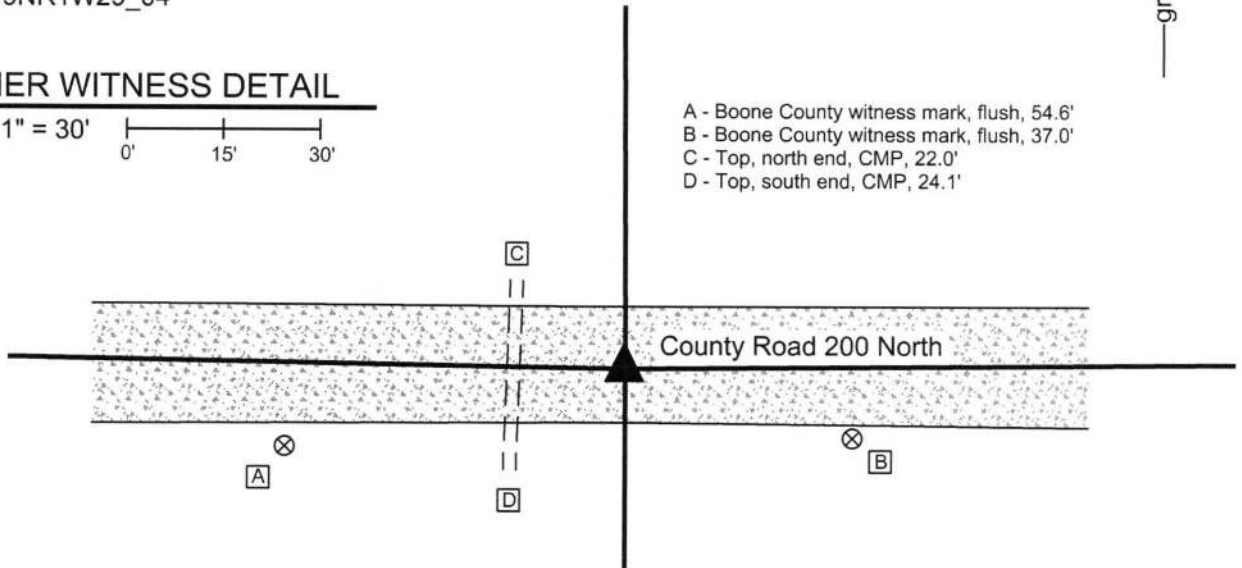
IN02\_T19NR1W29\_04



### CORNER WITNESS DETAIL

SCALE 1" = 30'

- A - Boone County witness mark, flush, 54.6'
- B - Boone County witness mark, flush, 37.0'
- C - Top, north end, CMP, 22.0'
- D - Top, south end, CMP, 24.1'



The Harrison monument was set in place of a vertical section of 1/2 inch diameter rebar found.

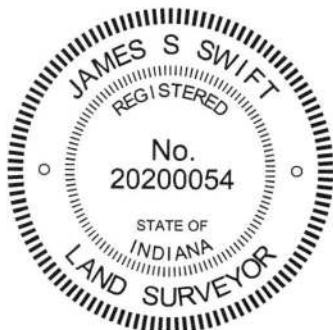
No specific descriptions of this corner were found in the BCS Surveyor's Record, though the corner is noted as the terminal point for measurements in several entries, most notably in an entry from November, 1853 which shows the relative locations of the subject corner and the section corners to the east and west. No recent BCS tie cards were found referencing this corner.

Excavation was performed at this corner on November 19, 2015. Prior to excavation, two rebars were found in the general vicinity of the corner. A 5/8 inch diameter rebar with a red cap, markings illegible, was found at 1 inch deep in the gravel road. A 1/2 inch diameter rebar with no cap was found at 9 inches deep in the gravel road, approximately 1 foot south and 3 feet west of the shallower rebar. Both rebars were in the approximate center of the east-west roadway. The 1/2 inch diameter rebar was at the west edge of a vague field entrance known to have formerly been used to access the field to the south and east, per testimony of local landowners.

Excavation of an area extending 4 feet in all directions from the 1/2 inch diameter rebar yielded no further evidence of the corner. Numerous fist-sized rocks were found at the base of the road bed. None of these stones appeared to be section corner monuments and the presence of this substantial base material indicates that this specific area was formerly wet and muddy.

It is noted that the roadway bends significantly at this quarter corner. Contrary to the expectation that the east-west section line be generally straight, the road diverges from the straight line. The center of the road and existing monuments were found to be up to 30 feet south of a straight line connecting the section corners to the east and west. The 1939 aerial photos on file in this office indicate that the bend in the road has existed since at least that time. Of the two monuments, the 1/2 inch rebar fit better with the local evidence of the corner in the form of the old farm lane, fit better with remote evidence of the corner with respect to evidence of occupation along the sixteenth line 1/4 mile to the west and fit better with the measurements reported in the 1853 record. The 5/8 inch rebar appears to have been set at or approximately equidistant from previously accepted (though not currently accepted) positions of the section corners to the east and west. However, the 1853 record indicates that the distance between the quarter corner (subject corner) and the corner to the west is longer than the distance to the quarter corner to the east. On all counts, the deeper monument fit better with old evidence and BCS records than the shallower monument. The 1/2 inch rebar was held as marking the corner and was replaced with a Harrison monument in the same position. Both rebars were removed during excavation. The 5/8 inch rebar had been 0.9 foot north and 3.1 feet east of the corner.

This corner was originally established as a wood post in 1822.



Kenneth E. Hedge, County Surveyor

James S. Swift, IN LS 20200054  
March 23, 2017

Jefferson  
Township

Section 20  
T19N, R1W

Section 29  
T19N, R1W

# SECTION CORNER RECORD

NW 200-500

## BOONE COUNTY SURVEYOR'S OFFICE

State Plane grid coordinates NAD83 (2011):

North: 1756092.46 East: 3098338.74 (U.S. survey feet)

Type of monument: Harrison, 4" disk 'Section Corner'

Depth: flush with adjacent road surface

Indiana tie card references:

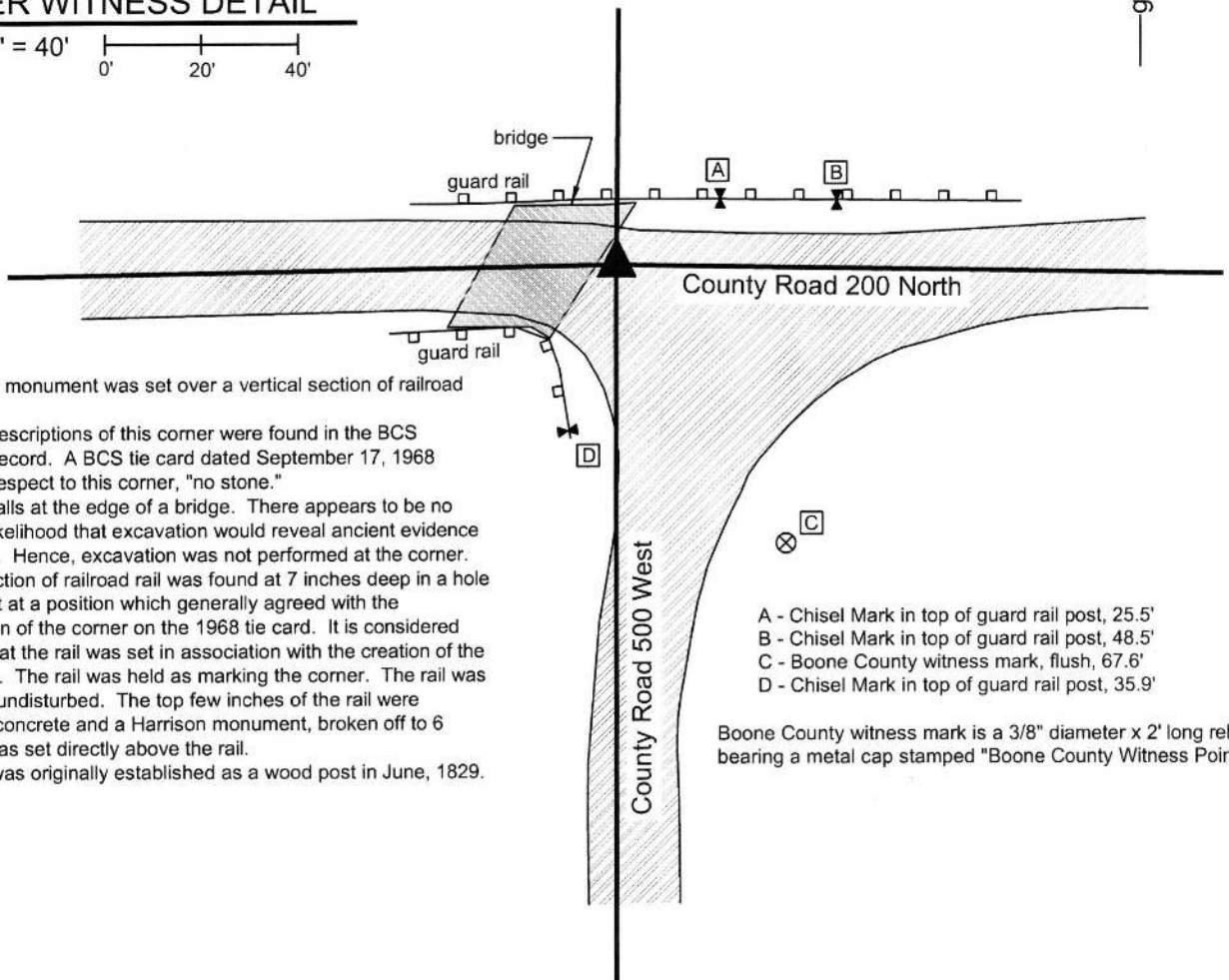
IN02\_T19NR1W19\_80 IN02\_T19NR1W20\_72

IN02\_T19NR1W30\_08 IN02\_T19NR1W30\_00



### CORNER WITNESS DETAIL

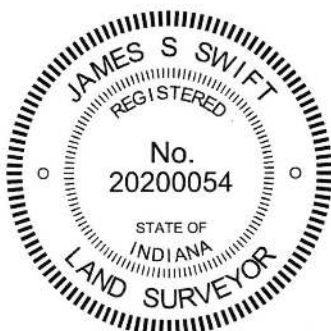
SCALE 1" = 40'



The Harrison monument was set over a vertical section of railroad rail found.  
No specific descriptions of this corner were found in the BCS Surveyor's Record. A BCS tie card dated September 17, 1968 states, with respect to this corner, "no stone."  
This corner falls at the edge of a bridge. There appears to be no substantial likelihood that excavation would reveal ancient evidence of the corner. Hence, excavation was not performed at the corner. A vertical section of railroad rail was found at 7 inches deep in a hole in the asphalt at a position which generally agreed with the representation of the corner on the 1968 tie card. It is considered most likely that the rail was set in association with the creation of the 1968 tie card. The rail was held as marking the corner. The rail was left in place, undisturbed. The top few inches of the rail were anchored in concrete and a Harrison monument, broken off to 6 inches tall, was set directly above the rail.  
This corner was originally established as a wood post in June, 1829.

- A - Chisel Mark in top of guard rail post, 25.5'
- B - Chisel Mark in top of guard rail post, 48.5'
- C - Boone County witness mark, flush, 67.6'
- D - Chisel Mark in top of guard rail post, 35.9'

Boone County witness mark is a 3/8" diameter x 2' long rebar bearing a metal cap stamped "Boone County Witness Point."



*Kenneth E. Hedge*  
Kenneth E. Hedge, County Surveyor

*James S. Swift*  
James S. Swift, IN LS 20200054  
March 24, 2016

Jefferson Township

Section 19 T19N, R1W	Section 20 T19N, R1W
Section 30 T19N, R1W	Section 29 T19N, R1W