

SECTION CORNER RECORD

BOONE COUNTY SURVEYOR'S OFFICE

NW 700-300

State Plane grid coordinates NAD83 (2011):

North: 1772068.94 East: 3087819.95 (U.S. survey feet)

Type of monument: 4 inch Mag spike set over

Brass Plug in monument box, INDOT Type B

Depth: Mag spike - flush, plug - 5 inches deep

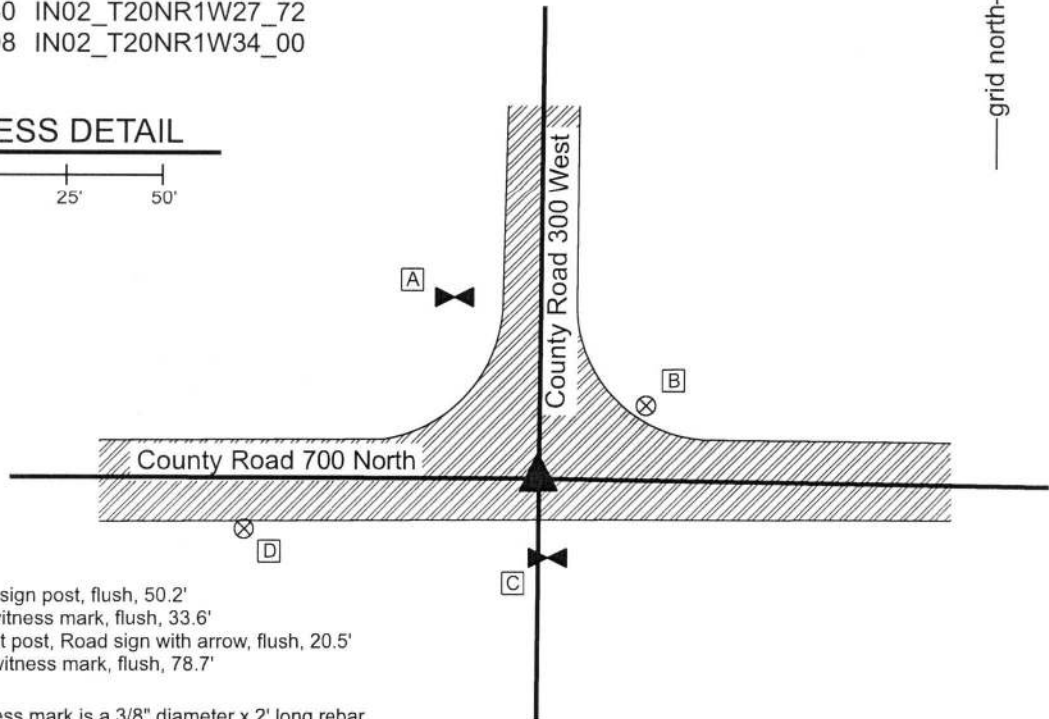
Indiana tie card references:

IN02_T20NR1W28_80 IN02_T20NR1W27_72

IN02_T20NR1W33_08 IN02_T20NR1W34_00

CORNER WITNESS DETAIL

SCALE 1" = 50'

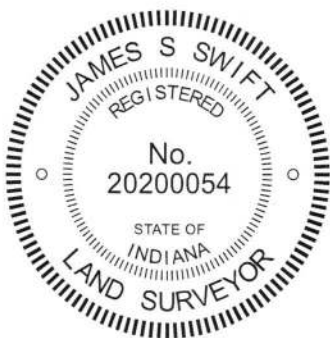


- A - East edge, stop sign post, flush, 50.2'
- B - Boone County witness mark, flush, 33.6'
- C - West edge, west post, Road sign with arrow, flush, 20.5'
- D - Boone County witness mark, flush, 78.7'

Boone County witness mark is a 3/8" diameter x 2' long rebar bearing a metal cap stamped "Boone County Witness Point."

The brass plug within the monument box was found in place, buried under 5 inches of asphalt. The Mag Spike was set directly over the plug. A BCS record dated September 25, 1871 states, with respect to this corner, "Reestablished from knowledge obtained when surveying road, when stump of one tree was here. Found two stakes I drove at that time, One 15 ft. N, the other 15 ft. S. of Corner. Set rock 28x16x10." No recent BCS tie cards were found referencing this corner.

No excavation was performed at this corner beyond exposing the monument box from below the 5 inch covering of asphalt due to the fact that the corner falls in an area of substantial fill associated with the approach to the overpass of County Road 700 North over Interstate 65. The corner is shown on the plans for I-65, reference R-08208-29, fiscal year 1969, plan I-65-5(36) 140. The plans show the corner at the intersection of 'Sec. Lines' and is labeled as "approx. 1/4 Sect. Cor. TYPE B MONUMENT REQ'D." It is believed that the monument has been held as the corner by surveyors since being established in association with the construction of Interstate 65. Due to the substantial fill placed during the construction of the overpass, it is not practical to excavate for further evidence and the INDOT Type B monument was held as marking the corner. The position of the monument works well with the relative positions of proximate corner and works well with the local evidence of the corner in the form of the roadways to the east and north. On July 17, 2018, the top of the monument box was exposed, the lid of the box was removed and the brass plug located. Asphalt patching was placed over the box, with no lid, and plug to flush with the surface of the road. On August 3, 2018, a 4 inch long Mag Spike was set directly over the brass plug. This corner was originally established as a wood post in 1822.



Kenneth E. Hedge
 Kenneth E. Hedge, County Surveyor

James S. Swift
 James S. Swift, IN LS 20200054
 August 7, 2018

Washington Township

Section 28 T20N, R1W	Section 27 T20N, R1W
Section 33 T20N, R1W	Section 34 T20N, R1W

SECTION CORNER RECORD

NW 700-350

BOONE COUNTY SURVEYOR'S OFFICE

State Plane grid coordinates NAD83 (2011):

North: 1782593.00 East: 3106285.59 (U.S. survey feet)

Type of monument: Harrison, 4" disk 'Section Corner'

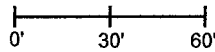
Depth: Flush with adjacent road surface

Indiana tie card references:

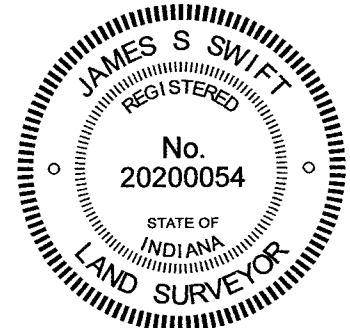
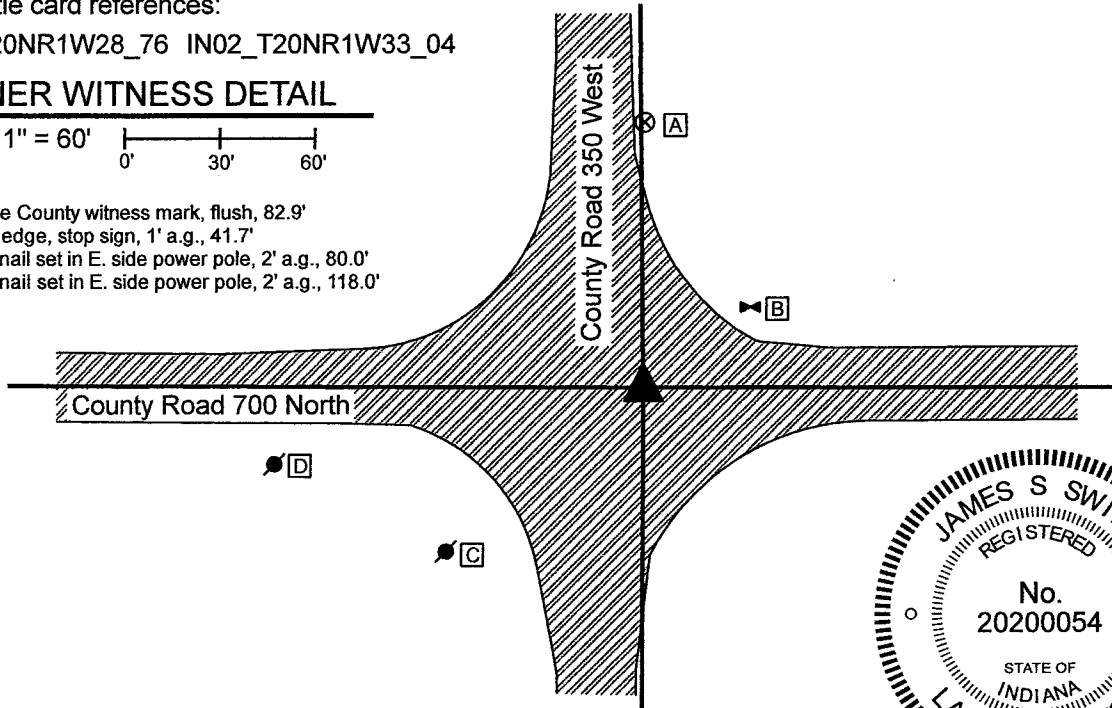
IN02_T20NR1W28_76 IN02_T20NR1W33_04

CORNER WITNESS DETAIL

SCALE 1" = 60'



- A - Boone County witness mark, flush, 82.9'
- B - S.W. edge, stop sign, 1' a.g., 41.7'
- C - Mag nail set in E. side power pole, 2' a.g., 80.0'
- D - Mag nail set in E. side power pole, 2' a.g., 118.0'



The Harrison monument was set in place of a railroad spike found.

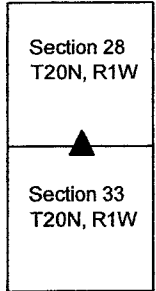
A BCS record dated March 23, 1874 states, with respect to this corner, "Set Rock. 24x15x11 +."

No recent BCS tie cards were found referencing the corner.

This corner is shown on plans for County Road 350 West, Project Number RSS-BRS-8106, dated February 7, 1986, on file at the Boone County Highway Department. These plans show the corner as "Iron Pipe 1/4 Sec. Cor." at P.I. Sta. 52+97.60, "A". The plans clearly demonstrate that this position was at the approximate center of the intersection of County Roads 700 North and 350 West prior to the reconstruction of the roadway. The railroad spike found at 3 inches deep in the road fits with the P.I. station for the iron pipe shown on the plans with approximately 1 foot of uncertainty in all directions, with respect to other references shown on the plans, including a railroad spike at the center of Section 33 (see BCS Corner NW 650-350) and a Type B Monument at the south quarter corner of Section 33 (see BCS Corner NW 600-350). The railroad spike was accepted as being in the same position as the iron pipe shown on the road plans and was held as marking the corner. The spike was removed and replaced with a Harrison monument on April 30, 2021. No other metal monument was found below the spike. No excavation was performed in search of a corner stone or other ancient evidence, as it is believed that the entire roadway was completely reconstructed in the late 1980s, destroying other evidence of the corner.

Given the references to the iron pipe on the highway plans and the relative positions of this corner with respect to adjacent corners, minimal uncertainty is associated with the position of the corner as held prior to and during the 1980s reconstruction of the road. However, it is apparent from deed and survey references that this position has not generally been known since the reconstruction of the road. The north-south roadway was built almost entirely west of the section line in the immediate vicinity of the corner and subsequent surveyors have held the center of the intersection as it is located post-reconstruction, as evidence of the corner. A survey recorded in Survey Book 3, pages 11-16, Boone County Recorder, and a survey by Jerry L. Carter, LS NO. S0350, dated January 19, 2008, both show the corner as a P.K. Nail found at the approximate center of the current intersection. Said nail is no longer present, but is known to have been 1.2 feet north and 11.4 feet west of the actual corner. A metes and bounds description of the northwest quarter of Section 33 found in Instrument 201200013398 states a difference between record and measured distances along the north line of the northwest quarter of almost 30 feet and appears to hold the subject corner as being approximately 18 feet west of the actual position of the corner.

Clearly the reconstruction of the intersection west of the original intersection has caused confusion for surveyors, but the road plans on file at the Boone County Highway Department make clear the position of the corner, as held prior to and during the reconstruction and based on the iron pipe found at the center of the original intersection. It is noted that the east line of the northwest quarter crosses the center of the reconstructed road and that the center quarter corner of Section 33 (see BCS Corner NW 650-350) is on the west side of the current roadway.



Kenneth E. Hedge
 Kenneth E. Hedge, County Surveyor

James S. Swift
 James S. Swift, IN LS 20200054
 Washington Township
 May 11, 2021

SECTION CORNER RECORD

NW 750-300

BOONE COUNTY SURVEYOR'S OFFICE

State Plane grid coordinates NAD83 (CORS96):

North: 1785231.74 East: 3108975.58 (U.S. survey feet)

Type of monument: Harrison, 4" disk 'Section Corner'

Depth: six inches below adjacent gravel road surface

Indiana tie card references:

IN02_T20NR1W28_44 IN02_T20NR1W27_36

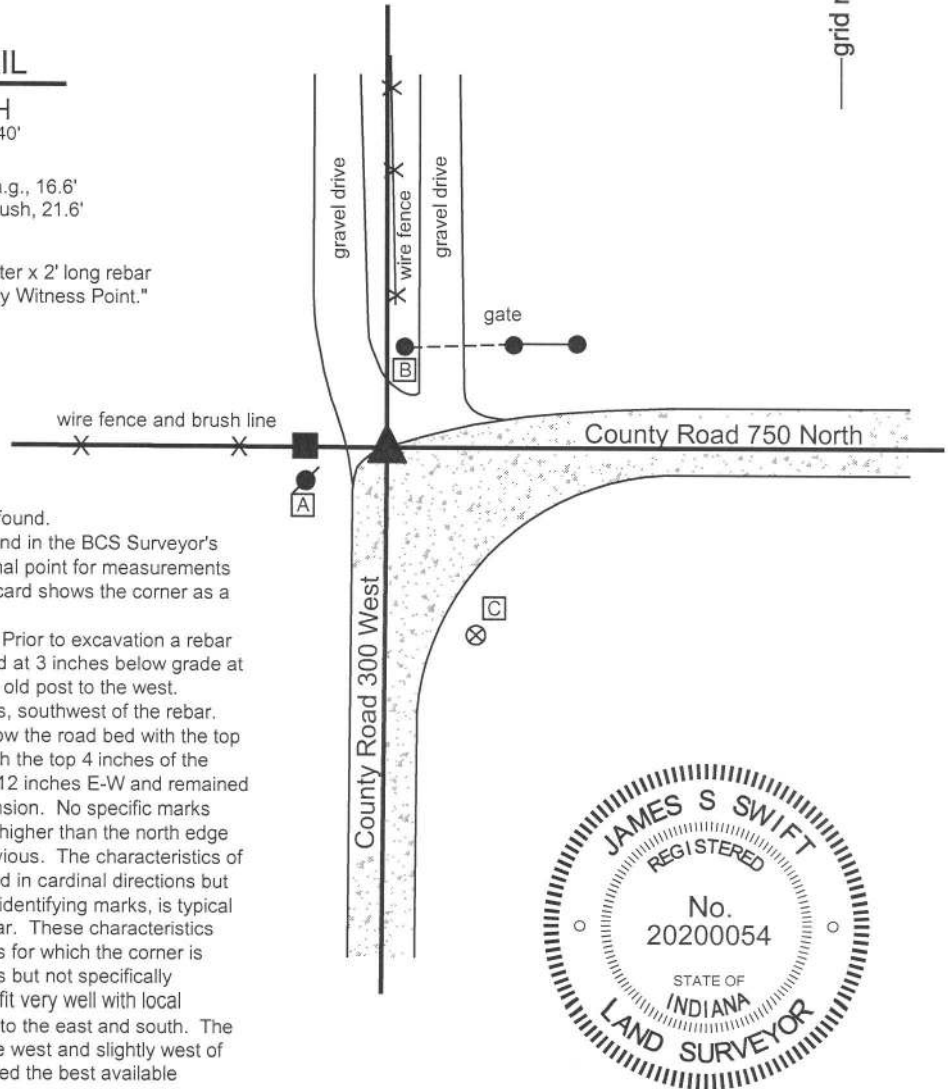


CORNER WITNESS DETAIL

SCALE 1" = 40'

- A - Mag nail set in E. side of power pole, 2' a.g., 16.6'
- B - South edge galvanized steel gate post, flush, 21.6'
- C - Boone County witness point, flush, 43.2'

Boone County witness mark is a 3/8" diameter x 2' long rebar bearing a metal cap stamped "Boone County Witness Point."



The Harrison monument was set over a stone found.

No specific descriptions of this corner were found in the BCS Surveyor's Record. The corner is mentioned as the terminal point for measurements in records of 1839 and 1871. A 1996 BCS tie card shows the corner as a rebar with no documentation of source.

This corner was excavated on June 26, 2014. Prior to excavation a rebar with a plastic cap (markings illegible) was found at 3 inches below grade at the 90 degree bend in the road and east of the old post to the west.

Excavation revealed a stone found at 16 inches, southwest of the rebar.

The stone was embedded in the clay layer below the road bed with the top of the stone at the bottom of the road bed. With the top 4 inches of the stone exposed, it measured 14 inches N-S by 12 inches E-W and remained stable, clearly much larger in the vertical dimension. No specific marks were found. The south edge of the stone was higher than the north edge though a clearly defined high point was not obvious. The characteristics of this stone, being embedded in the clay, oriented in cardinal directions but neither being specifically vertically nor bearing identifying marks, is typical of stones found for which the records are similar. These characteristics have been observed for numerous other stones for which the corner is identified as the terminal point for measurements but not specifically described by the County Surveyor. The stone fit very well with local evidence in the form of the centers of the road to the east and south. The stone was generally in line with the fence to the west and slightly west of the fence to the north. The stone was accepted the best available evidence of the corner. The highest point of the stone, near the south edge of the stone, was held as marking the corner and a Harrison monument was set over this point. The rebar, removed during construction, had been 1 foot east and 1 foot north.

This corner was originally established as a wood post in 1829.

Kenneth E. Hedge, County Surveyor

James S. Swift, IN LS 20200054

March 27, 2015

Washington Township

Section 28 T20N, R1W	Section 27 T20N, R1W
-------------------------	-------------------------

PHOTOGRAPHIC DOCUMENTATION

Date of photography: June 26, 2014

The stone as originally found.



The stone more fully exposed.



View from the north, looking across the stone and south along County Road 300 West.



The stone and the fence/brush line to the west. The end post of the fence is to the right of the sign.



For details and documentation, refer to related sheet "Section Corner Record."

SECTION CORNER RECORD

NW 750-400

BOONE COUNTY SURVEYOR'S OFFICE

State Plane grid coordinates NAD83 (CORS96):
North: 1785250.88 East: 3103584.86 (U.S. survey feet)

Type of monument: Harrison, 4" disk 'Section Corner'
Depth: four inches above adjacent ground.

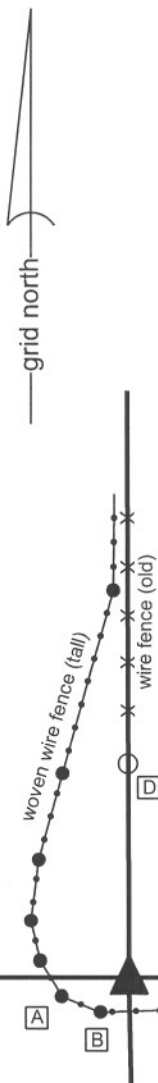
Indiana tie card references:
IN02_T20NR1W29_44 IN02_T20NR1W28_36

CORNER WITNESS DETAIL

SCALE 1" = 40'

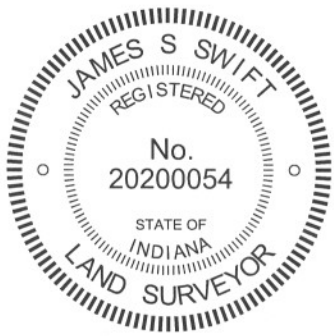
- A - N. edge, round steel post, 2' a.g., 14.76'
- B - N. edge, round steel post, 2' a.g., 9.45'
- C - N. edge, round steel post, 2' a.g., 15.34'
- D - Boone County witness mark, flush, 51.61'
- E - Rebar "Section Corner", flush, 44.72' (see notes)

Boone County witness mark is a 3/8" diameter x 2' long rebar bearing a metal cap stamped "Boone County Witness Point."



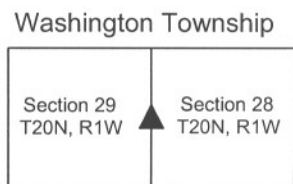
The harrison monument was set at a calculated position. This corner was investigated and monumented in the spring of 2010. Prior to the involvement of the Surveyor's Office, there existed considerable confusion as to whether the corner was at a position represented by a 5/8 inch diameter rebar bearing a red plastic cap stamed "Section Corner" or whether the corner was further south, in line with an ancient fence to the east. The confusion at the corner was exacerbated by wording in the deed for the adjacent land to the south and east which creates a small gap in deeds between the described north line of that property and the section line. Two surveys, one by MSE Surveying, MSE Corporation, recorded in Survey Book 3, pages 11-16 in the Office of the Boone County Recorder and another survey by Jerry L. Carter, dated January 19, 2008 were available for review. The two surveys show significantly different positions for the corner.

The position of the corner was computed from evidence found at various points along the section lines to the north and south, as documented in the records for Section 29, T20N, R1W in the BCS Sruveyors Record, and in agreement with the old fences to the north and east. A stone was found and held as the northeast corner of section 29, as discussed on the documentation for corner NW-800-400. A rebar was found and held as marking the southeast corner of section 29. This monument is shown as the corner on the Carter survey and is believed to replace the corner post shown as the corner on the MSE survey. A stone at the base of an old wood corner post with fences to the north, south and east was found marking the apparent N.E. corner of the S.E. 1/4 of the S.E. 1/4 of section 29. A BCS record dated May 20, 1905 states that this 1/16 th corner was established and a rock set at the split of the distance between the S.E. and E. quarter corners of section 29. Holding the rebar at the S.E. corner and the stone at the 1/16 th corner and prolonging the line between them for double the distance yields a position which is in line with the ancient fence to the east and precisely at the southerly extension of the ancient fence to the north. This position is close to the position for the corner believed to be held for the M.S.E. survey. It is 44.7 feet south of the rebar held as marking the corner on the Carter survey. While the specific source of the rebar is not known, Mr. Carter explained that he believed that it was set by field crews working for Anderson and Associates and that they set it next to the "old corner post." However, close inspection of the object adjacent to the rebar yields no evidence of it being a corner post and ample evidence that it was actually an old tree around which substantial amounts of wire were wrapped. The presence of this wire may be explained by the fact that the tree is at the edge of a steep slope to the south and represents the southerly terminus of that portion of the old north-south fence which was established on generally flat, stable ground. The corner, calculated as described above, falls along a wet hillside where a natrual spring apparently opens onto the ground, creating constant wetness and a much mud. Limited probing was performed in this area but it is believed that specific physical evidence of the actual corner has been washed away in the wetness and mud. In the spring of 2010 remnants of the old fence to the east were still present, including two old posts at approximately 300 feet east of the corner. These old posts fit precisely with the line extended from the calculated position of the corner to a railroad rail generally accepted as marking the center quarter corner of the section and documented on a BCS tie card dated October 1969. Mr. Lloyd Hayden, the adjacent land-owner to the north and east of the corner, states his knowledge that the old fence has long been accepted as marking the line between the properties and was used for containing livestock through much of the 20th century. The calculated position of the corner was found to agree with all of the available local evidence except the capped rebar and wire-wrapped tree. Upon review of the evidence, Mr. Carter accepted the calculated position for the corner and acknowledged the lack of supporting evidence for the rebar. The calculated position was held as marking the corner and a harrison monument was set at this position on March 30, 2010. Mr. Carter held the harrison monument as the corner for purposes of staking the adjacent lines. Substantial, new woven wire fences were constructed in this vicinity after the harrison monument was set.



Kenneth E. Hedge
Kenneth E. Hedge, County Surveyor

James S. Swift
James S. Swift, IN LS 20200054
March 30, 2012



SECTION CORNER RECORD

BOONE COUNTY SURVEYOR'S OFFICE

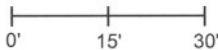
NW 800-400

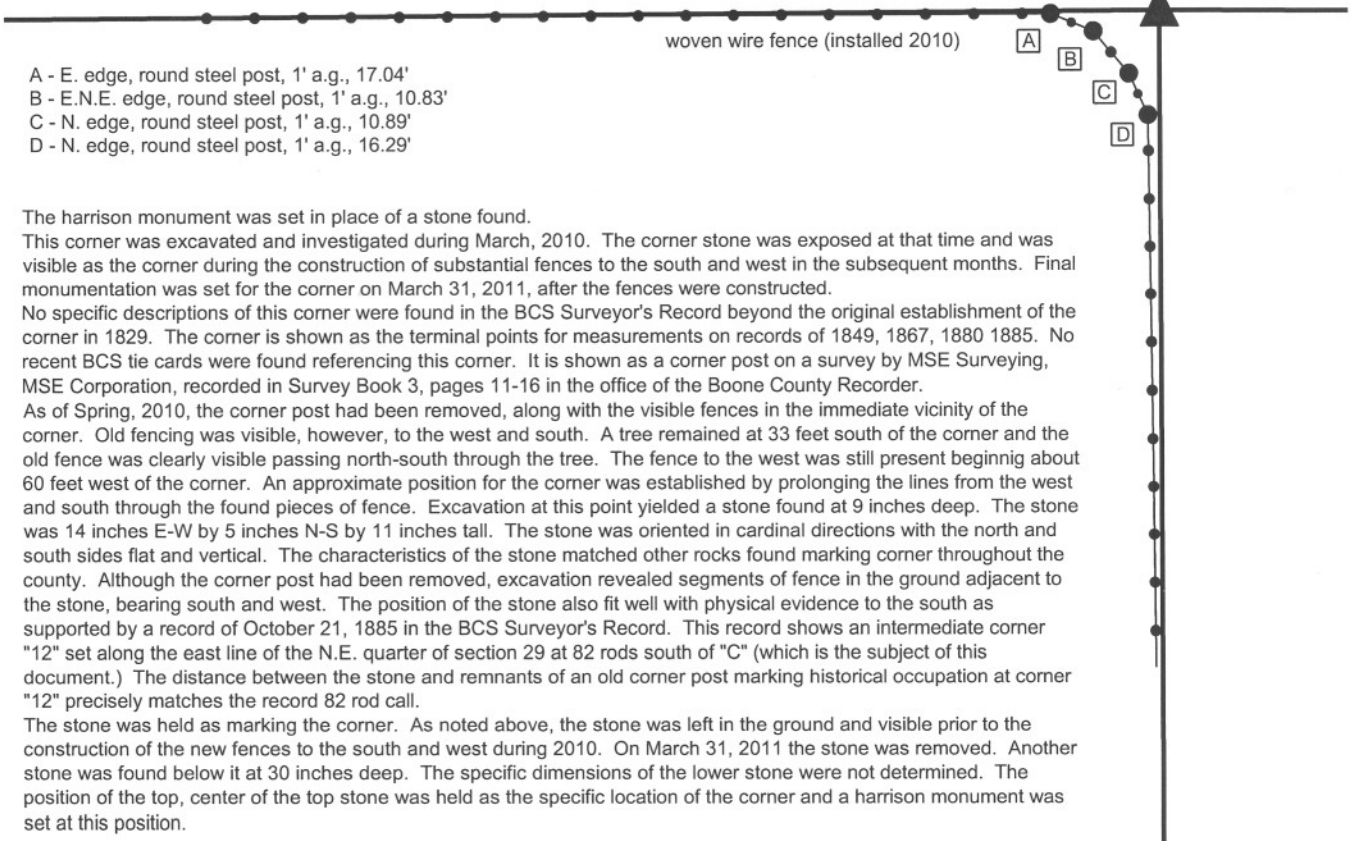
State Plane grid coordinates NAD83 (NSRS 2007):
 North: 1787920.85 East: 3103576.93 (U.S. survey feet)

Type of monument: Harrison, 4" disk 'Section Corner'
 Depth: four inches above adjacent ground

Indiana tie card references:
 IN02_T20NR1W20_80 IN02_T20NR1W21_72
 IN02_T20NR1W29_08 IN02_T20NR1W28_00

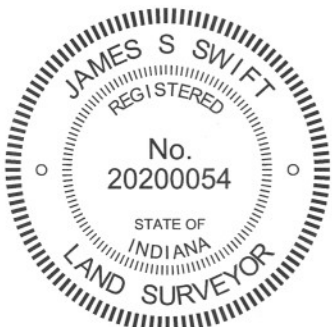
CORNER WITNESS DETAIL

SCALE 1" = 30' 




- A - E. edge, round steel post, 1' a.g., 17.04'
- B - E.N.E. edge, round steel post, 1' a.g., 10.83'
- C - N. edge, round steel post, 1' a.g., 10.89'
- D - N. edge, round steel post, 1' a.g., 16.29'

The harrison monument was set in place of a stone found. This corner was excavated and investigated during March, 2010. The corner stone was exposed at that time and was visible as the corner during the construction of substantial fences to the south and west in the subsequent months. Final monumentation was set for the corner on March 31, 2011, after the fences were constructed. No specific descriptions of this corner were found in the BCS Surveyor's Record beyond the original establishment of the corner in 1829. The corner is shown as the terminal points for measurements on records of 1849, 1867, 1880 1885. No recent BCS tie cards were found referencing this corner. It is shown as a corner post on a survey by MSE Surveying, MSE Corporation, recorded in Survey Book 3, pages 11-16 in the office of the Boone County Recorder. As of Spring, 2010, the corner post had been removed, along with the visible fences in the immediate vicinity of the corner. Old fencing was visible, however, to the west and south. A tree remained at 33 feet south of the corner and the old fence was clearly visible passing north-south through the tree. The fence to the west was still present beginning about 60 feet west of the corner. An approximate position for the corner was established by prolonging the lines from the west and south through the found pieces of fence. Excavation at this point yielded a stone found at 9 inches deep. The stone was 14 inches E-W by 5 inches N-S by 11 inches tall. The stone was oriented in cardinal directions with the north and south sides flat and vertical. The characteristics of the stone matched other rocks found marking corner throughout the county. Although the corner post had been removed, excavation revealed segments of fence in the ground adjacent to the stone, bearing south and west. The position of the stone also fit well with physical evidence to the south as supported by a record of October 21, 1885 in the BCS Surveyor's Record. This record shows an intermediate corner "12" set along the east line of the N.E. quarter of section 29 at 82 rods south of "C" (which is the subject of this document.) The distance between the stone and remnants of an old corner post marking historical occupation at corner "12" precisely matches the record 82 rod call. The stone was held as marking the corner. As noted above, the stone was left in the ground and visible prior to the construction of the new fences to the south and west during 2010. On March 31, 2011 the stone was removed. Another stone was found below it at 30 inches deep. The specific dimensions of the lower stone were not determined. The position of the top, center of the top stone was held as the specific location of the corner and a harrison monument was set at this position.




 Kenneth E. Hedge, County Surveyor


 James S. Swift, IN LS 20200054
 March 30, 2012

Washington Township

Section 20 T20N, R1W	Section 21 T20N, R1W
Section 29 T20N, R1W	Section 28 T20N, R1W

PHOTOGRAPHIC DOCUMENTATION

Date of photography: March 19, 2010 & March 31, 2011

The stone as first exposed on March 19, 2010, along with remnants of wire embedded in the dirt.



The harrison monument set on March 31, 2011.



View from the north, looking across the stone and south along the fence constructed in 2010.



View from the east, looking across the stone and west along the fence constructed in 2010.



For details and documentation, refer to related sheet "Section Corner Record."