

SECTION CORNER RECORD

NW 100-950

BOONE COUNTY SURVEYOR'S OFFICE

State Plane grid coordinates NAD83 (2011):

North: 1750848.86 East: 3074585.05 (U.S. survey feet)

Type of monument: plug in monument box, INDOT Type B

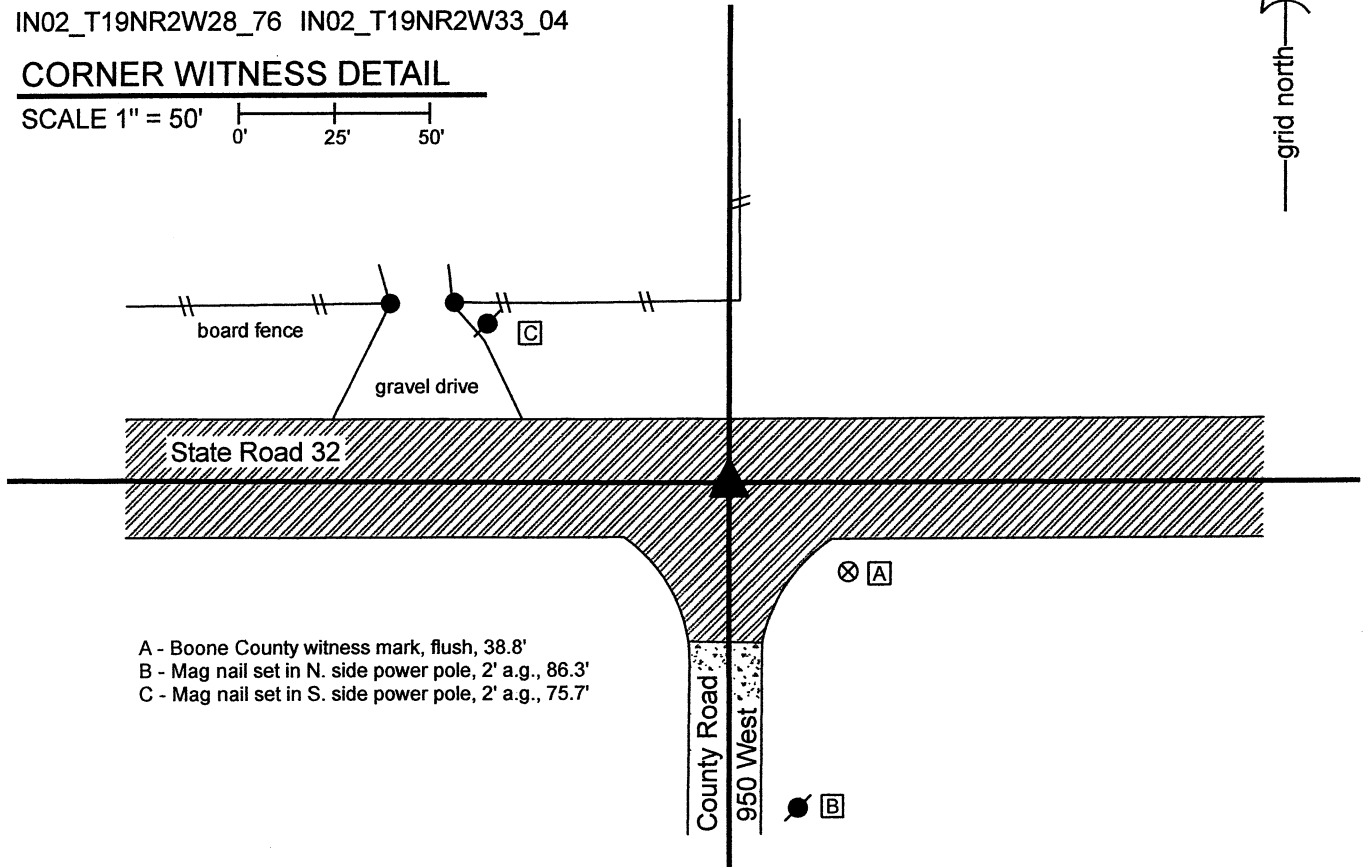
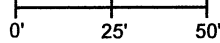
Depth: Flush with adjacent road surface

Indiana tie card references:

IN02_T19NR2W28_76 IN02_T19NR2W33_04

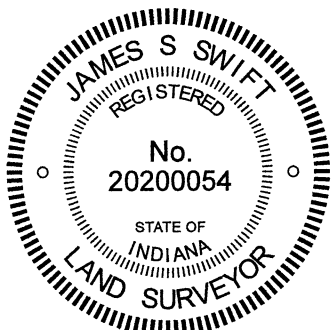
CORNER WITNESS DETAIL

SCALE 1" = 50'



- A - Boone County witness mark, flush, 38.8'
- B - Mag nail set in N. side power pole, 2' a.g., 86.3'
- C - Mag nail set in S. side power pole, 2' a.g., 75.7'

The INDOT Type B Monument was found in place and held as marking the corner. No specific descriptions of this corner were found in the BCS Surveyor's Record beyond the original establishment of the corner as a wood post in 1822. The corner is listed as the terminal point for measurements in a record of October 17, 1892, indicating that some monument was present at that time from which to measure. No recent BCS tie cards were found referencing the corner. A Survey Monument Replacement Surveyor's Report recorded as Instrument 200700005107 in the Office of the Boone County Recorder indicates that between May 2006 and May 2007 an existing monument, not identified, was replaced with a Type B monument. The report notes that the new monument was set 0.06 foot SE of the previous monument. No excavation was performed at this corner, as it falls in State Road 32. The Type B monument is located at the approximate intersection the centers of the east-west state road and County Road 950 West. The monument was accepted as the best available evidence of the corner.



Kenneth E. Hedge
Kenneth E. Hedge, County Surveyor

James S. Swift
James S. Swift, IN LS 20200054

June 16, 2021

Jefferson Township

Section 28
T19N, R2W

Section 33
T19N, R2W

SECTION CORNER RECORD

BOONE COUNTY SURVEYOR'S OFFICE

NW 100-1000

State Plane grid coordinates NAD83 (2011):
 North: 1750865.98 East: 3071941.75 (U.S. survey feet)

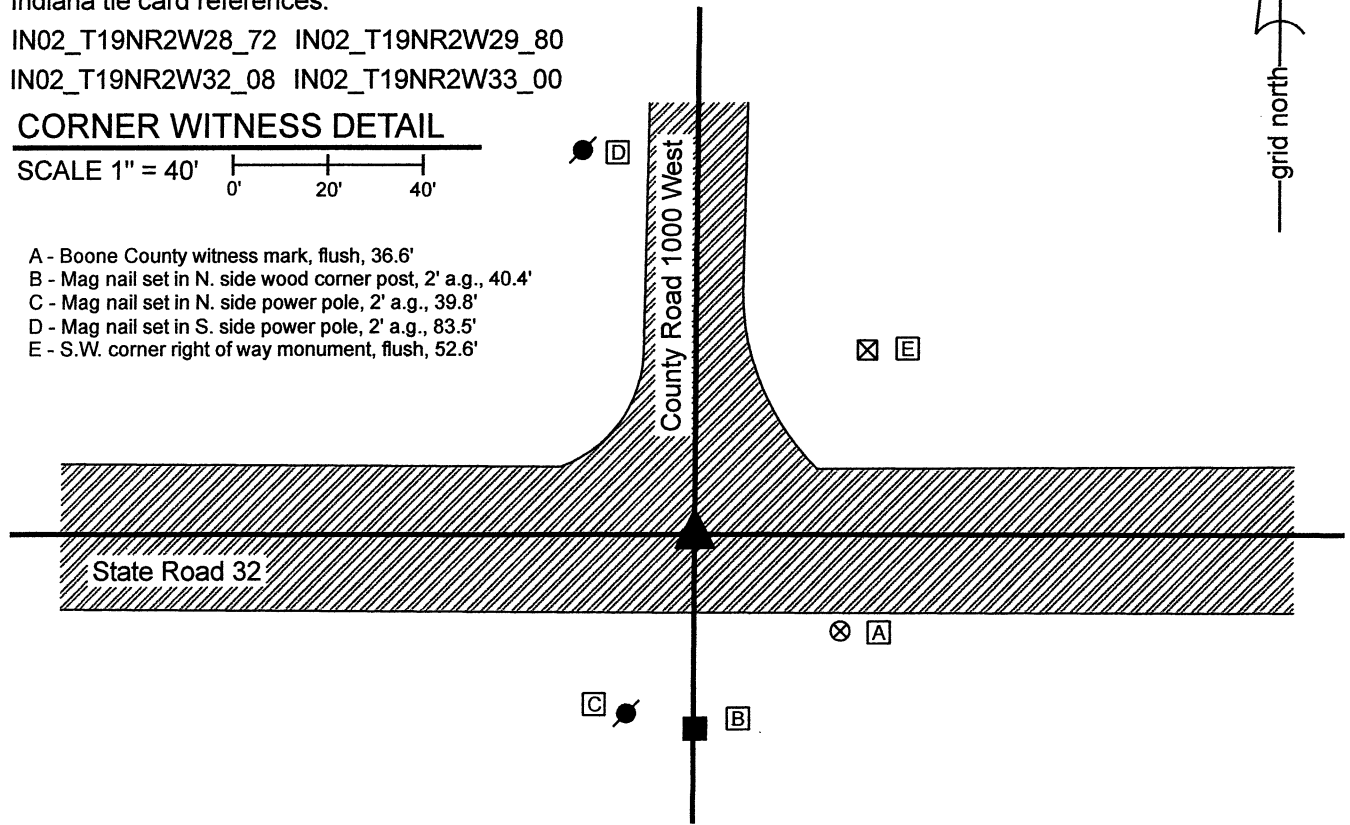
Type of monument: plug in monument box, INDOT Type B
 Depth: Flush with adjacent road surface

Indiana tie card references:
 IN02_T19NR2W28_72 IN02_T19NR2W29_80
 IN02_T19NR2W32_08 IN02_T19NR2W33_00

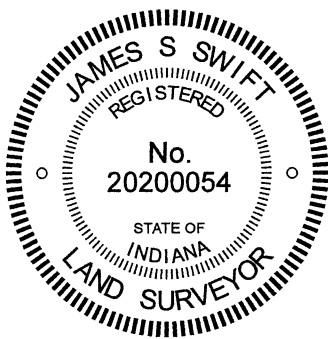
CORNER WITNESS DETAIL

SCALE 1" = 40'

- A - Boone County witness mark, flush, 36.6'
- B - Mag nail set in N. side wood corner post, 2' a.g., 40.4'
- C - Mag nail set in N. side power pole, 2' a.g., 39.8'
- D - Mag nail set in S. side power pole, 2' a.g., 83.5'
- E - S.W. corner right of way monument, flush, 52.6'



The INDOT Type B Monument was found in place and held as marking the corner.
 No specific references to this corner were found in the BCS Surveyor's Record beyond the original establishment of the corner as a wood post in 1822. No recent BCS tie cards were found referencing this corner.
 A Survey Monument Replacement Surveyor's Report recorded as Instrument 200700005107 in the Office of the Boone County Recorder indicates that between May 2006 and May 2007 an existing monument, not identified, was replaced with a Type B monument. The report notes that the new monument was set 0.04 foot SE of the previous monument.
 No excavation was performed at this corner, as it falls in State Road 32. The Type B monument is located at the approximate intersection the centers of the east-west state road and County Road 1000 West. The monument was accepted as the best available evidence of the corner.



Kenneth E. Hedge
 Kenneth E. Hedge, County Surveyor

James S. Swift
 James S. Swift, IN LS 20200054
 June 16, 2021

Jefferson Township

Section 29 T19N, R2W	Section 28 T19N, R2W
Section 32 T19N, R2W	Section 33 T19N, R2W

SECTION CORNER RECORD

NW 150-900

BOONE COUNTY SURVEYOR'S OFFICE

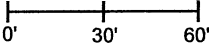
State Plane grid coordinates NAD83 (2011):
North: 1753495.61 East: 3077226.39 (U.S. survey feet)

Type of monument: Harrison, 4" disk 'Section Corner'
Depth: One inch below adjacent road surface

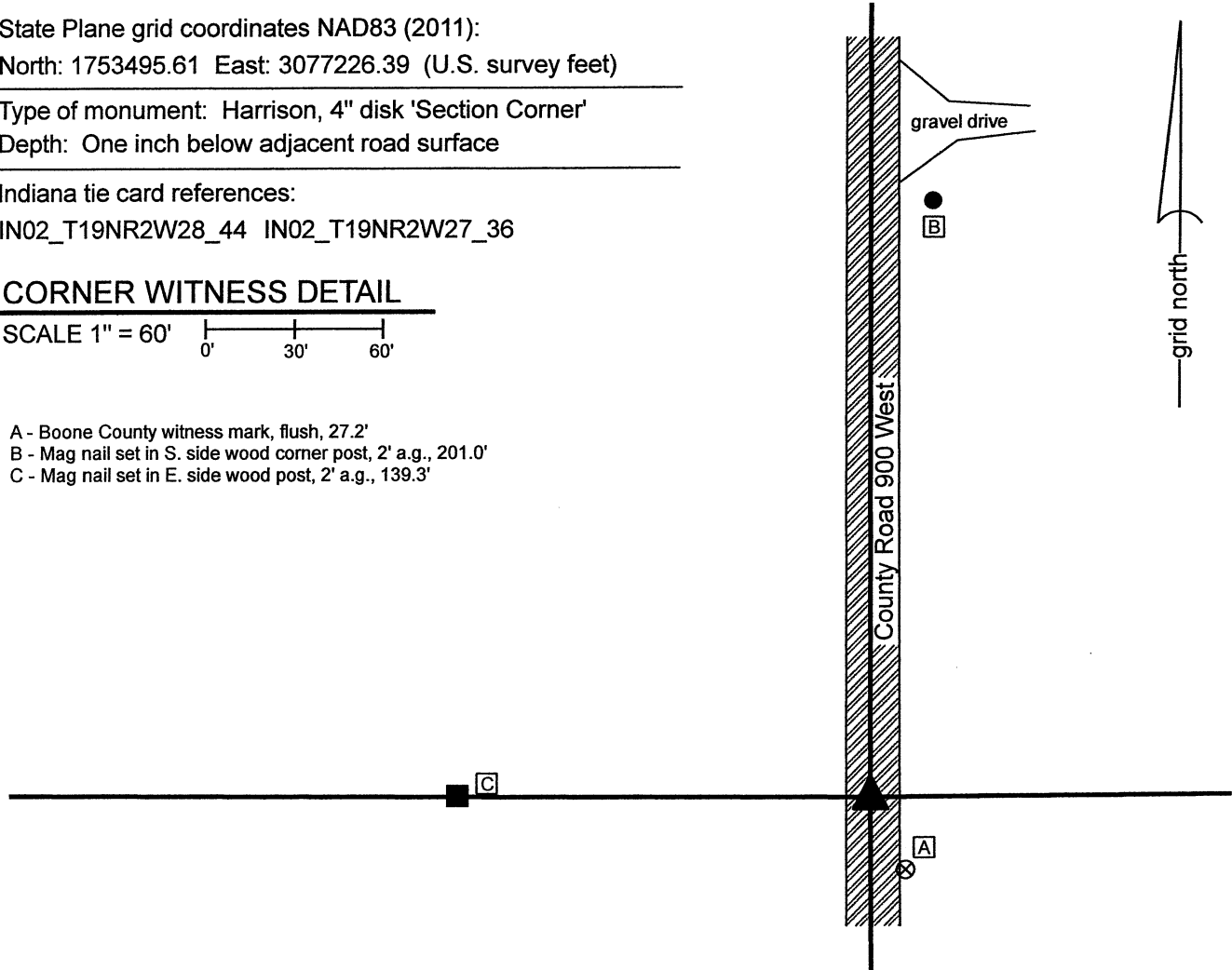
Indiana tie card references:
IN02_T19NR2W28_44 IN02_T19NR2W27_36

CORNER WITNESS DETAIL

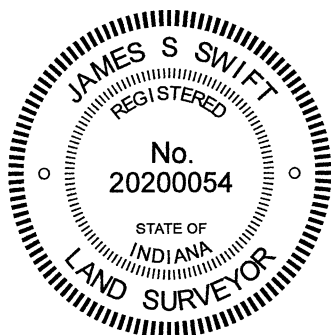
SCALE 1" = 60'



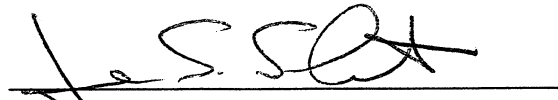
- A - Boone County witness mark, flush, 27.2'
- B - Mag nail set in S. side wood corner post, 2' a.g., 201.0'
- C - Mag nail set in E. side wood post, 2' a.g., 139.3'

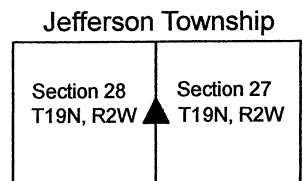


The Harrison monument was set in place of a rebar and vertical section of railroad rail found. No specific descriptions of this corner were found in the BCS Surveyor's Record beyond the original establishment of the corner as a wood post in 1829. No recent BCS tie cards were found referencing the corner. Excavation was performed at this corner on September 24, 2021. Prior to excavation, a rebar with plastic cap stamped 'Section Corner' was found at 2 inches below grade in the approximate center of the north-south roadway, at the easterly prolongation of a fence and field division to the west. Excavation revealed a vertical section of railroad rail at 11 inches below grade. The rebar had been at the east edge of the rail but was situated such that the top of the rebar was directly above the top of the rail. Two small rocks were found at approximately 17 inches deep, approximately 2 feet northeast of the rebar and rail. The rocks were haphazard in their orientation and were entirely within the fill material of the road bed. These rocks could not be confirmed as being purposely set section corner monuments. No further evidence was found in an area of excavation being 5 feet N-S by 5 feet E-W, centered on the found rebar and rail. The bottom of the road bed was found at 22 inches deep. No documentation of source was found for the rebar and rail, but they fit well with the local evidence of the corner, being in the center of the north-south road and in line with evidence of occupation to the west. They also fit well with the relative positions of proximate corners. It is most likely that these monuments were set by personnel from this office, but that is not confirmed by available records. The rebar and rail were both removed during excavation and were replaced with a Harrison monument in the same horizontal position.




Kenneth E. Hedge, County Surveyor


James S. Swift, IN LS 20200054
September 29, 2021



SECTION CORNER RECORD

NW 150-1000

BOONE COUNTY SURVEYOR'S OFFICE

State Plane grid coordinates NAD83 (2011):

North: 1753513.84 East: 3071954.32 (U.S. survey feet)

Type of monument: Harrison, 4" disk 'Section Corner'

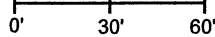
Depth: One inch below adjacent road surface

Indiana tie card references:

IN02_T19NR2W29_44 IN02_T19NR2W28_36

CORNER WITNESS DETAIL

SCALE 1" = 60'



A - Boone County witness mark, flush, 43.0'

B - Mag nail set in E. side power pole, 2' a.g., 23.7'

C - Mag nail set in N.E. side power pole, 2' a.g., 160.0'

The Harrison monument was set in place of a vertical section of railroad rail found.

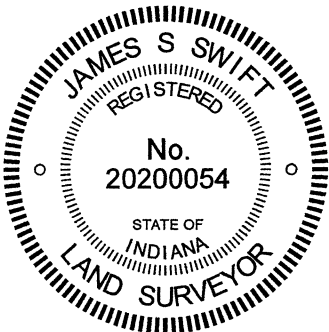
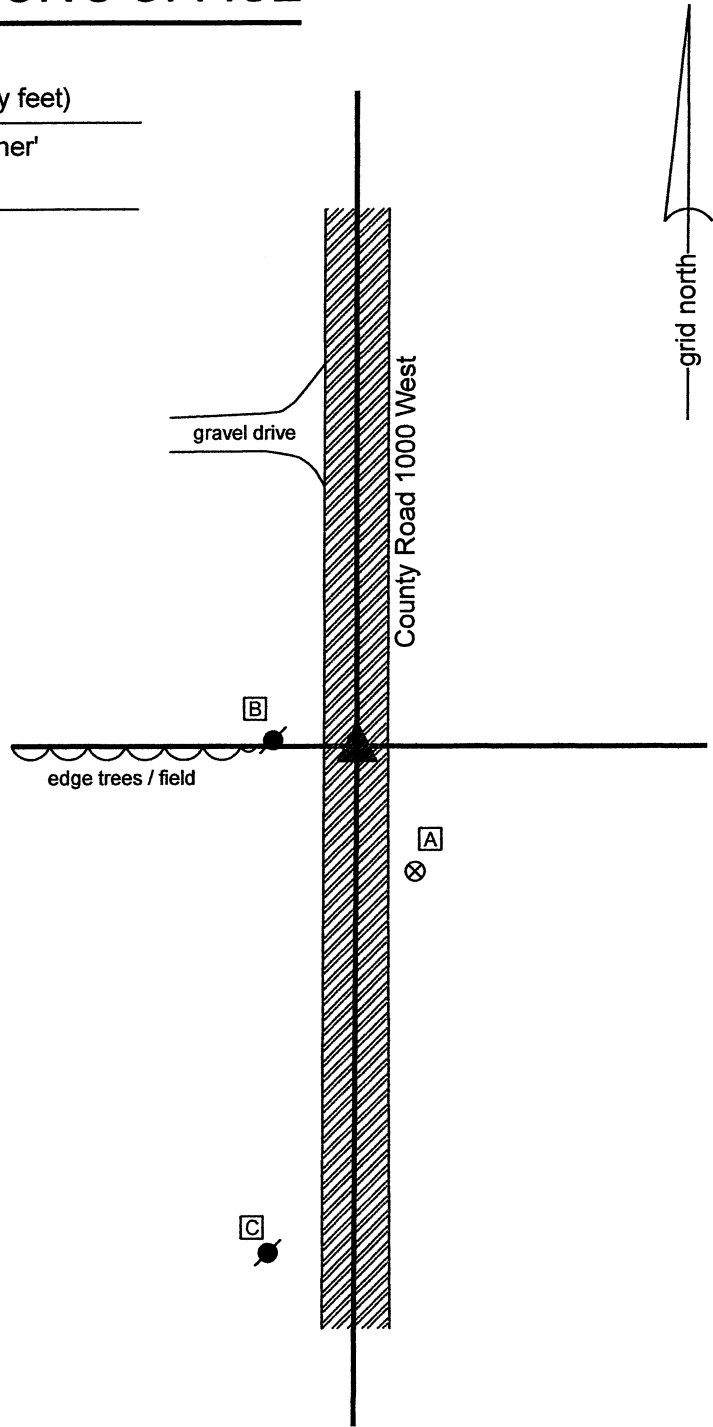
This corner is referenced in a BCS Record of October 21, 1869 which states "Reestablished from trees. Set Rock 12,8,5 1/2 +."

A BCS tie card dated June 23, 1969 shows the corner at a point midway between end posts on the east and west sides of the road with the caption "No Stone."

This corner was excavated on July 15, 2021. Prior to excavation, a 1/2-inch diameter rebar was found at 2 inches below grade in the asphalt roadway. Excavation revealed a vertical section of railroad rail found at 7 inches deep. The rebar had been situated against the east edge of the rail and the top of the rebar had been directly above the top, center of the rail. Further excavation did not reveal further evidence of the corner. Excavation of a 5-foot by 5-foot area centered on the rebar and rail was extended to approximately 18 inches deep. The bottom of the road bed was found at 15 inches deep.

Though it is not specifically referenced on the 1969 tie card, the rail was most likely set at that time, as it was the standard procedure of BCS field crews from that era to set vertical sections of railroad rail to mark section corners. The position of the rail fits well with the relative positions of proximate corners. Per the evidence shown on the 1969 tie card, the rail was set with respect to visible evidence of occupation indicating the position of the section line. The stone called for in the 1869 record was not found. The rail was held as marking the corner. The rebar and rail were both removed during excavation and replaced with a Harrison monument in the same position.

This corner was originally established as a wood post in 1829.



Kenneth E. Hedge
 Kenneth E. Hedge, County Surveyor

James S. Swift
 James S. Swift, IN LS 20200054
 July 21, 2021

Jefferson Township

Section 29 T19N, R2W	Section 28 T19N, R2W
-------------------------	-------------------------

SECTION CORNER RECORD

NW 200-900

BOONE COUNTY SURVEYOR'S OFFICE

State Plane grid coordinates NAD83 (2011):

North: 1756130.40 East: 3077219.52 (U.S. survey feet)

Type of monument: Harrison, 4" disk 'Section Corner'

Depth: One inch below adjacent road surface

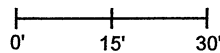
Indiana tie card references:

IN02_T19NR2W22_72 IN02_T19NR2W21_80

IN02_T19NR2W28_08 IN02_T19NR2W27_00

CORNER WITNESS DETAIL

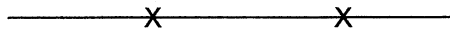
SCALE 1" = 30'



A - Boone County witness mark, flush, 18.6'

B - Mag nail set in E. side wood corner post, 2' a.g., 21.5'

C - Mag nail set in S. side power pole, 2' a.g., 78.1'



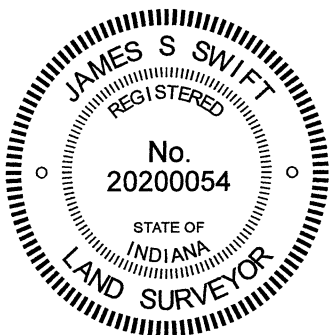
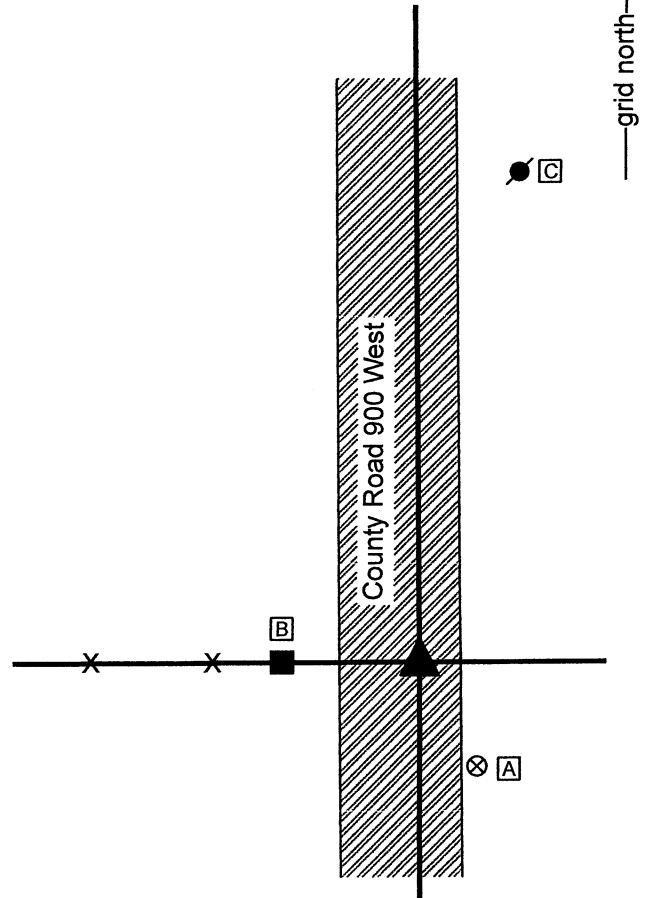
- wire fence

The Harrison monument was set over a stone found.

A BCS record dated 1917 states, with respect to this corner, "Set Rock. Under 7" x 8" x 9". Top 5" x 6" x 6" +." A BCS tie card August 26, 1969 states 'No Stone Located.'

This corner was excavated on September 23, 2021. Prior to excavation, a vertical section of railroad rail was found at 3 inches below grade. The rail is not mentioned in the 1969 tie card but was most likely set at that time by that crew, as setting railroad rails was a standard practice of BCS field crews from that era. Excavation revealed a stone found at 6 inches deep, east of the rail. The stone was in the fill material of the road bed, but was oriented in cardinal directions. The stone measured 7 inches E-W by 7 inches N-S by 4 inches tall, approximating but not quite matching the dimensions of the top rock described in the 1917 record. No specific marks were detected on the stone, perhaps due to the remarkably rough surface of the rock. Further excavation revealed another stone found directly below the top stone at 12 inches deep. The west edge of this stone was exposed. The stone was vertical and oriented in cardinal directions, measuring 9 inches tall by 7 inches N-S. The east-west dimension was measured as 7 inches at 3 inches down from the top of the stone. No specific marks were observed on the stone, nor were any called for in description. The stone was accepted as being the lower monument called for in the 1917 record and was held as marking the corner. The stone was left in place and a Harrison monument was set directly over the top, high point. The railroad rail, removed during excavation, had been 2.2 feet west of the stone. Both the stone and the rail were at the easterly prolongation of a fence to the west.

This corner was originally established as a wood post in 1829.



Kenneth E. Hedge
 Kenneth E. Hedge, County Surveyor

James S. Swift
 James S. Swift, IN LS 20200054
 September 29, 2021

Jefferson Township

Section 21 T19N, R2W	Section 22 T19N, R2W
Section 28 T19N, R2W	Section 27 T19N, R2W

SECTION CORNER RECORD

NW 200-950

BOONE COUNTY SURVEYOR'S OFFICE

State Plane grid coordinates NAD83 (2011):

North: 1756125.04 East: 3074575.22 (U.S. survey feet)

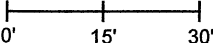
Type of monument: 5/8 inch rebar with aluminum cap stamped 'Boone County Surveyor' 4 feet long, set in concrete

Depth: Flush with adjacent ditch bank

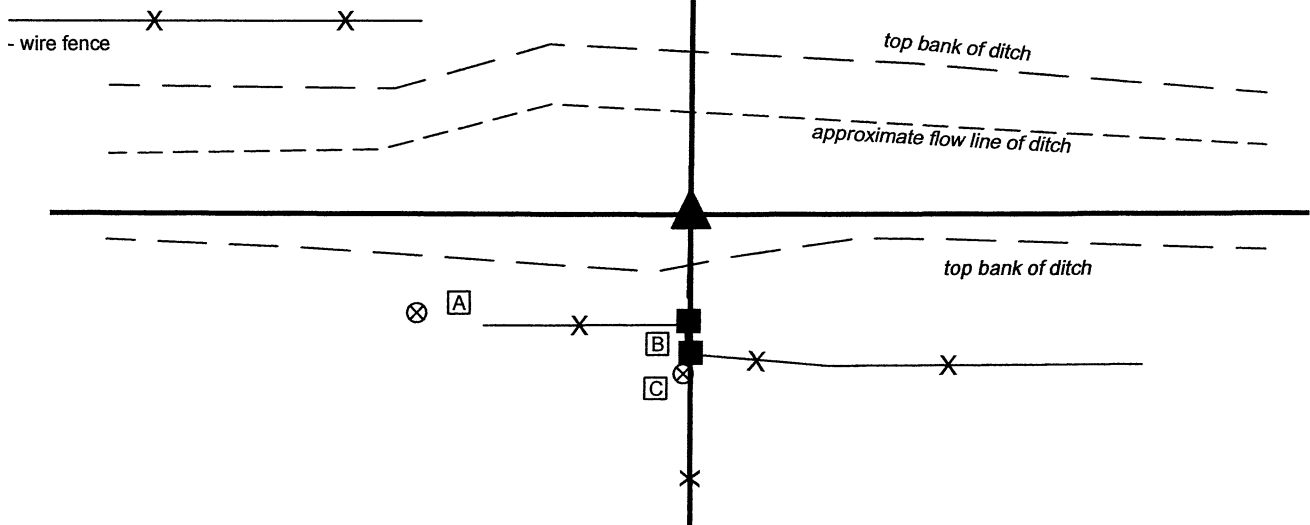
Indiana tie card references:

IN02_T19NR2W21_76 IN02_T19NR2W28_04

CORNER WITNESS DETAIL

SCALE 1" = 30' 

- A - Boone County witness mark, flush, 45.4'
- B - Mag nail set in W. side wood corner post, 2, a.g., 21.4'
- C - Rebar with yellow cap (Dodge), flush, 24.7'



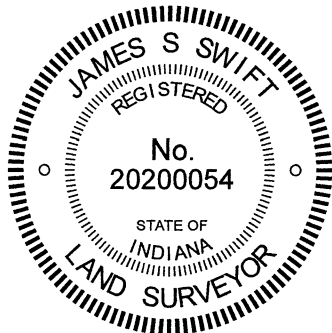
The rebar with metal cap was set at a calculated position.

A BCS record of April 25, 1919 states, with respect to this corner, "Set Rock 6x8x12. Top 12x9x6 +."


No recent BCS tie cards were found referencing this corner. The corner is shown on a survey by Jerry L. Carter recorded as Instrument 200600005905 in the Office of the Boone County Recorder. This survey shows the corner as a calculated position, witnessed by a rebar 24.75 feet south. The actual corner falls within the banks of the Riggins Legal Drain. No evidence of the actual corner is likely to have survived the excavation of the open ditch. The specific position of the corner was computed with respect to information shown on the aforementioned survey. The position of the corner was computed with an uncertainty of approximately 0.3 foot in all directions, as computed with respect to the evidence found for the southeast, southwest, west quarter and east quarter corners of section 21. A rebar with yellow plastic cap found in the fence to the south, appears to be 1.1 foot west of the position shown on the survey. It is noted that the survey shows the corner to be east of a standing fence, but the rebar found in the field is located in-line with the fence.

The position of the corner computed with respect to the survey data falls on the south bank of the Riggins ditch, at the northerly prolongation of an old fence to the south. As the corner falls on the edge of a steep ditch bank, no Harrison monument was set. A 48-inch length of 5/8-inch diameter rebar was set at the computed position, anchored to the ditch bank with concrete surrounding portions of the rebar from approximately 3 inches to 24 inches below grade. The concrete is also anchored to two 1/2-inch diameter rebars, 2-foot long, driven into the southerly ditch bank, slightly south of the primary monument. A metal cap stamped 'Boone County Surveyor' was attached to the top of the 48-inch long rebar.

This corner was originally established as a wood post in 1829.




 Kenneth E. Hedge, County Surveyor


 James S. Swift, IN LS 20200054

December 2, 2020

Jefferson Township

Section 21
T19N, R2W

Section 28
T19N, R2W