

SECTION CORNER RECORD

BOONE COUNTY SURVEYOR'S OFFICE

NW 100-350

State Plane grid coordinates NAD83 (2011):

North: 1750808.91 East: 3106278.37 (U.S. survey feet)

Type of monument: plug in monument box, INDOT Type B

Depth: Flush with adjacent road surface

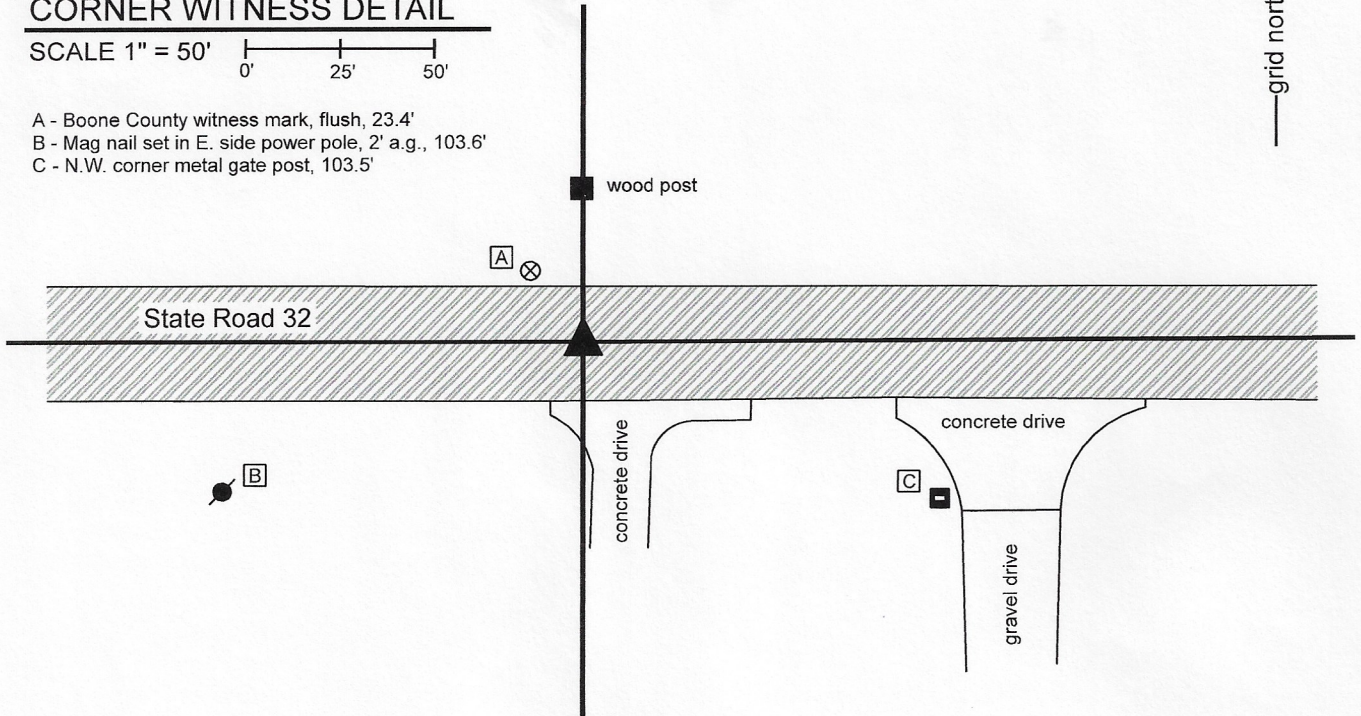
Indiana tie card references:

IN02_T19NR1W28_76 IN02_T19NR1W33_04

CORNER WITNESS DETAIL

SCALE 1" = 50'

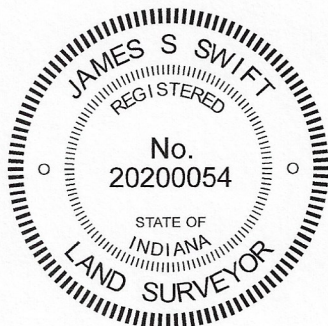
- A - Boone County witness mark, flush, 23.4'
- B - Mag nail set in E. side power pole, 2' a.g., 103.6'
- C - N.W. corner metal gate post, 103.5'



The Type B monument was found in place and held as marking the corner. As this corner falls in a state road, no large scale excavation was performed.

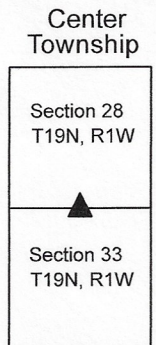
No specific descriptions of this corner were found in the BCS Surveyor's Record beyond the original establishment of the corner as a wood post in 1822. A Survey Monument Replacement Surveyor's Report recorded as Instrument 200700005107 in the Office of the Boone County Recorder indicates that between May, 2006 and May, 2007 an existing monument, not identified, was replaced with a Type B monument. The report notes that the new monument was set 0.06 foot east of the previous monument.

The INDOT Type B monument was held as marking the corner as found. The position of the corner agrees with local evidence in the form of being in the approximate center of the east-west road, in-line with an ancient wood corner post on the north side of the road.



Kenneth E. Hedge
 Kenneth E. Hedge, County Surveyor

James S. Swift
 James S. Swift, IN LS 20200054
 May 11, 2020



SECTION CORNER RECORD

BOONE COUNTY SURVEYOR'S OFFICE

NW 100-400

State Plane grid coordinates NAD83 (2011):

North: 1750809.53 East: 3103635.14 (U.S. survey feet)

Type of monument: Plug in monument box, INDOT Type B

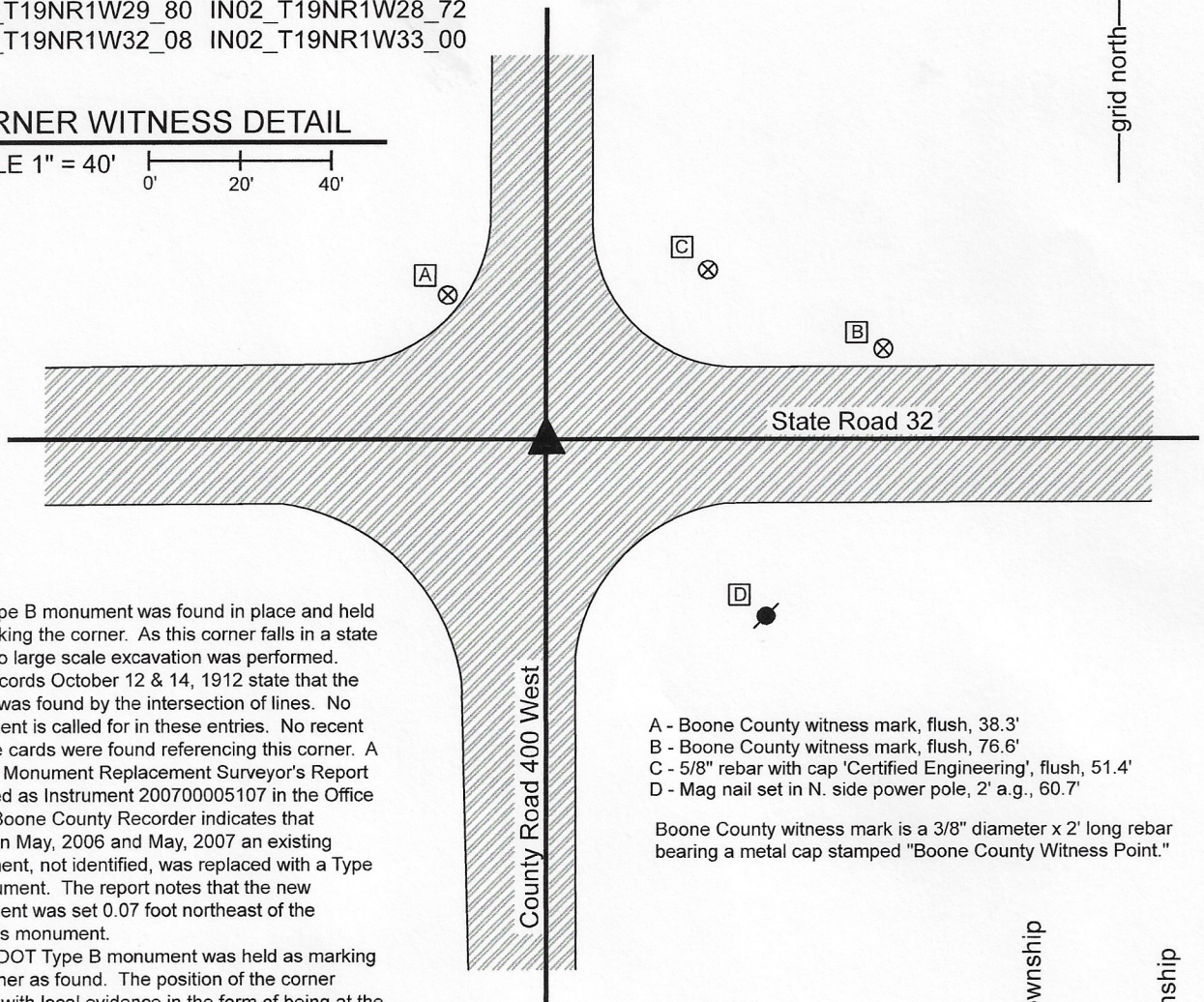
Depth: Flush with adjacent road surface

Indiana tie card references:

IN02_T19NR1W29_80 IN02_T19NR1W28_72
 IN02_T19NR1W32_08 IN02_T19NR1W33_00

CORNER WITNESS DETAIL

SCALE 1" = 40'



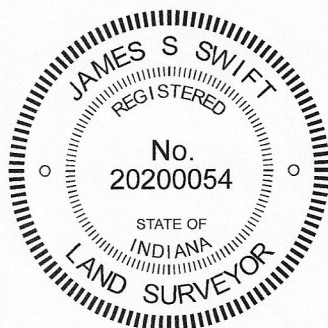
The Type B monument was found in place and held as marking the corner. As this corner falls in a state road, no large scale excavation was performed. BCS records October 12 & 14, 1912 state that the corner was found by the intersection of lines. No monument is called for in these entries. No recent BCS tie cards were found referencing this corner. A Survey Monument Replacement Surveyor's Report recorded as Instrument 200700005107 in the Office of the Boone County Recorder indicates that between May, 2006 and May, 2007 an existing monument, not identified, was replaced with a Type B monument. The report notes that the new monument was set 0.07 foot northeast of the previous monument.

The INDOT Type B monument was held as marking the corner as found. The position of the corner agrees with local evidence in the form of being at the intersection of the two roads. This appears to agree as well with the 1912 records.

This corner was originally established as a wood post in 1822.

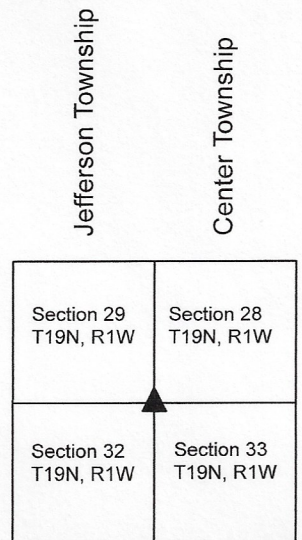
- A - Boone County witness mark, flush, 38.3'
- B - Boone County witness mark, flush, 76.6'
- C - 5/8" rebar with cap 'Certified Engineering', flush, 51.4'
- D - Mag nail set in N. side power pole, 2' a.g., 60.7'

Boone County witness mark is a 3/8" diameter x 2' long rebar bearing a metal cap stamped "Boone County Witness Point."



Kenneth E. Hedge
 Kenneth E. Hedge, County Surveyor

James S. Swift
 James S. Swift, IN LS 20200054
 May 11, 2020



SECTION CORNER RECORD

NW 150-400

BOONE COUNTY SURVEYOR'S OFFICE

State Plane grid coordinates NAD83 (2011):

North: 1753429.67 East: 3103639.68 (U.S. survey feet)

Type of monument: Harrison, 4" disk 'Section Corner'

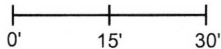
Depth: Six inches below adjacent gravel road surface

Indiana tie card references:

IN02_T19NR1W29_44 IN02_T19NR1W28_36

CORNER WITNESS DETAIL

SCALE 1" = 30'



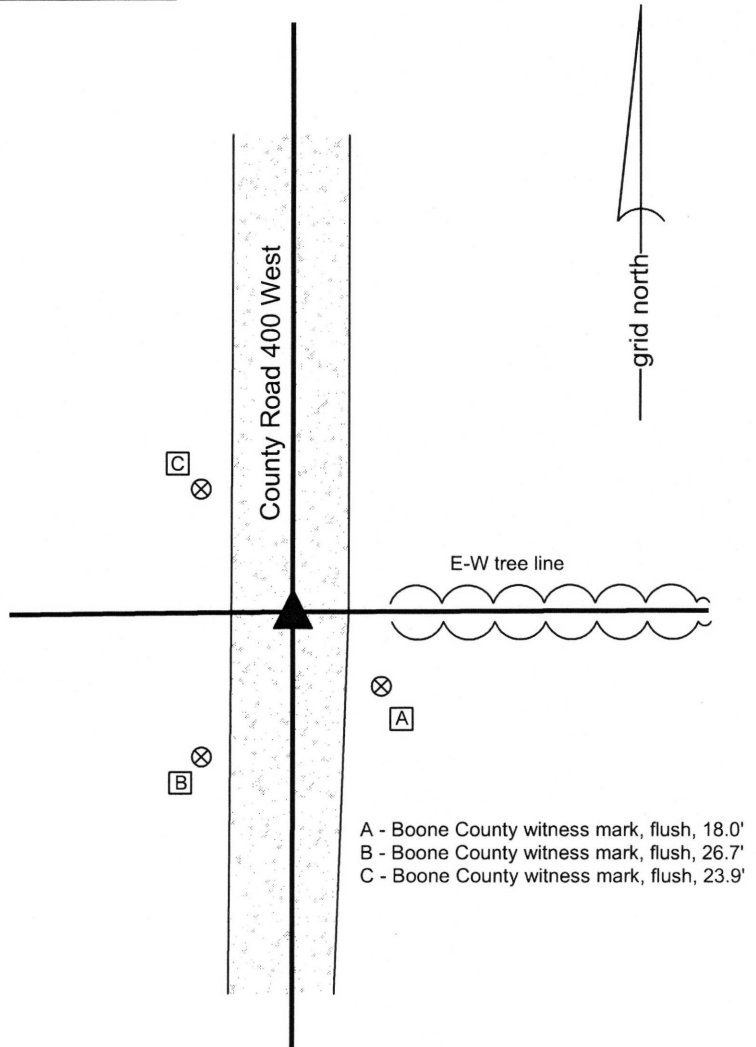
The Harrison monument was set in place of a vertical section of railroad rail found.

No specific descriptions of the corner were found in the BCS Surveyor's Record. A BCS tie card dated October, 1975 states "No Stone - Rail Set" and shows the corner as being at the midpoint between fence corner posts on the east and west sides of the road.

This corner was excavated on June 10, 2015. Prior to excavation, a vertical section of railroad rail was found at 6 inches below grade in the center of the gravel road at the westerly prolongation of an old tree line to the east. Though the corner posts shown on the 1975 tie card are no longer present, it is believed that the found rail is the same monument called for on the 1975 record. Excavation of an area extending 4 feet North, 4 feet South, 3.5 feet East, and 3.5 feet West of the rail yielded no further evidence of the corner.

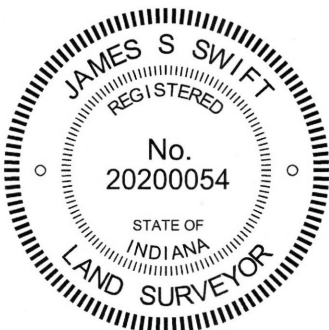
The rail was accepted as providing the best available evidence of the corner. The rail was removed during excavation and was replaced with a Harrison monument set in the same position.

This corner was originally established as a wood post in 1829.



- A - Boone County witness mark, flush, 18.0'
- B - Boone County witness mark, flush, 26.7'
- C - Boone County witness mark, flush, 23.9'

Boone County witness mark is a 3/8" diameter x 2' long rebar bearing a metal cap stamped "Boone County Witness Point."



Kenneth E. Hedge
Kenneth E. Hedge, County Surveyor

James S. Swift
James S. Swift, IN LS 20200054
March 24, 2016

Jefferson Township
Center Township

Section 29 T19N, R1W	Section 28 T19N, R1W
-------------------------	-------------------------

SECTION CORNER RECORD

NW 200-300

BOONE COUNTY SURVEYOR'S OFFICE

State Plane grid coordinates NAD83 (2011):

North: 1756120.19 East: 3108893.60 (U.S. survey feet)

Type of monument: Harrison, 4" disk 'Section Corner'

Depth: Two inches above adjacent ground

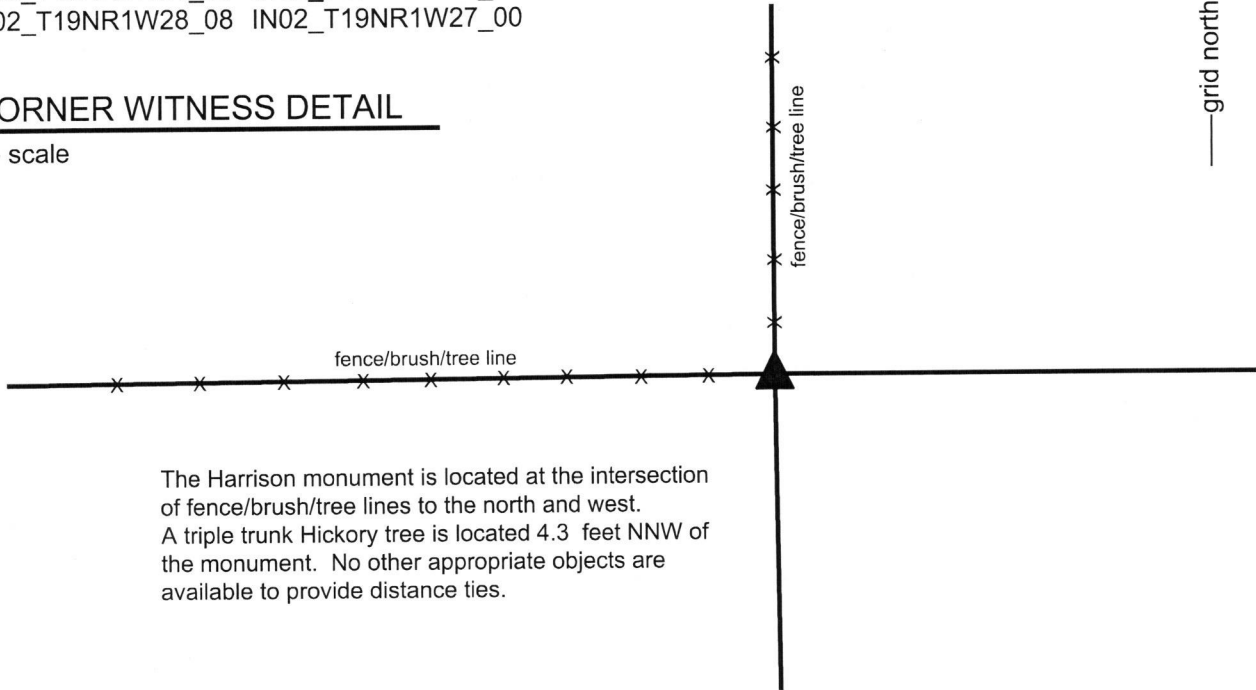
Indiana tie card references:

IN02_T19NR1W21_80 IN02_T19NR1W22_72

IN02_T19NR1W28_08 IN02_T19NR1W27_00

CORNER WITNESS DETAIL

no scale



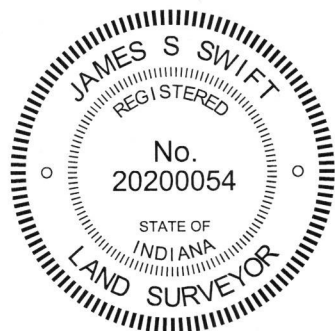
The Harrison monument is located at the intersection of fence/brush/tree lines to the north and west. A triple trunk Hickory tree is located 4.3 feet NNW of the monument. No other appropriate objects are available to provide distance ties.

The Harrison monument was set in place of a wood corner post found.

A BCS record dated May 13-14, 1884 states, with respect to this corner, "Reest'd from O.B.T. Set Flat Rock marked +." No recent BCS tie cards were found referencing this corner.

Excavation was performed at this corner on October 21, 2017. Prior to excavation, an ancient wood corner post was found with standing fences to the north and west and fencing cut-off toward the east. The position of the post fit well with the relative positions of proximate corners. Excavation around and in the vicinity of the post revealed several rocks found, none of which were particularly flat or had a discernable etched "+" mark. Hence, no rocks matching the 1884 record were found, nor were any rocks found which appeared to have been set as marking the corner. The post itself was accepted as providing the best available evidence of the original location of the corner. As found, the top of the post was not attached to the ground and was standing, albeit leaning substantially to the northwest, as supported by the attached fencing and brace posts. Excavation around the base of the post revealed that the old base must have rotted away as only small fragments of wood were found in the dirt below the post. The top of the post was pushed toward the northwest, but in so doing, the northerly brace was displaced and the post was left in an awkward position, suspended and leaning over the corner. The wire to the north was cut and the post was laid on the ground, adjacent to and northwest of its former position. A Harrison monument was set in the position of the bottom of the post, as originally found.

This corner was originally established as a wood post in 1829.



Kenneth E. Hedge

 Kenneth E. Hedge, County Surveyor

James S. Swift

 James S. Swift, IN LS 20200054
 November 7, 2017

Center Township

Section 21 T19N, R1W	Section 22 T19N, R1W
Section 28 T19N, R1W	Section 27 T19N, R1W

SECTION CORNER RECORD

NW 200-400

BOONE COUNTY SURVEYOR'S OFFICE

State Plane grid coordinates NAD83 (2011):
North: 1756068.65 East: 3103638.65 (U.S. survey feet)

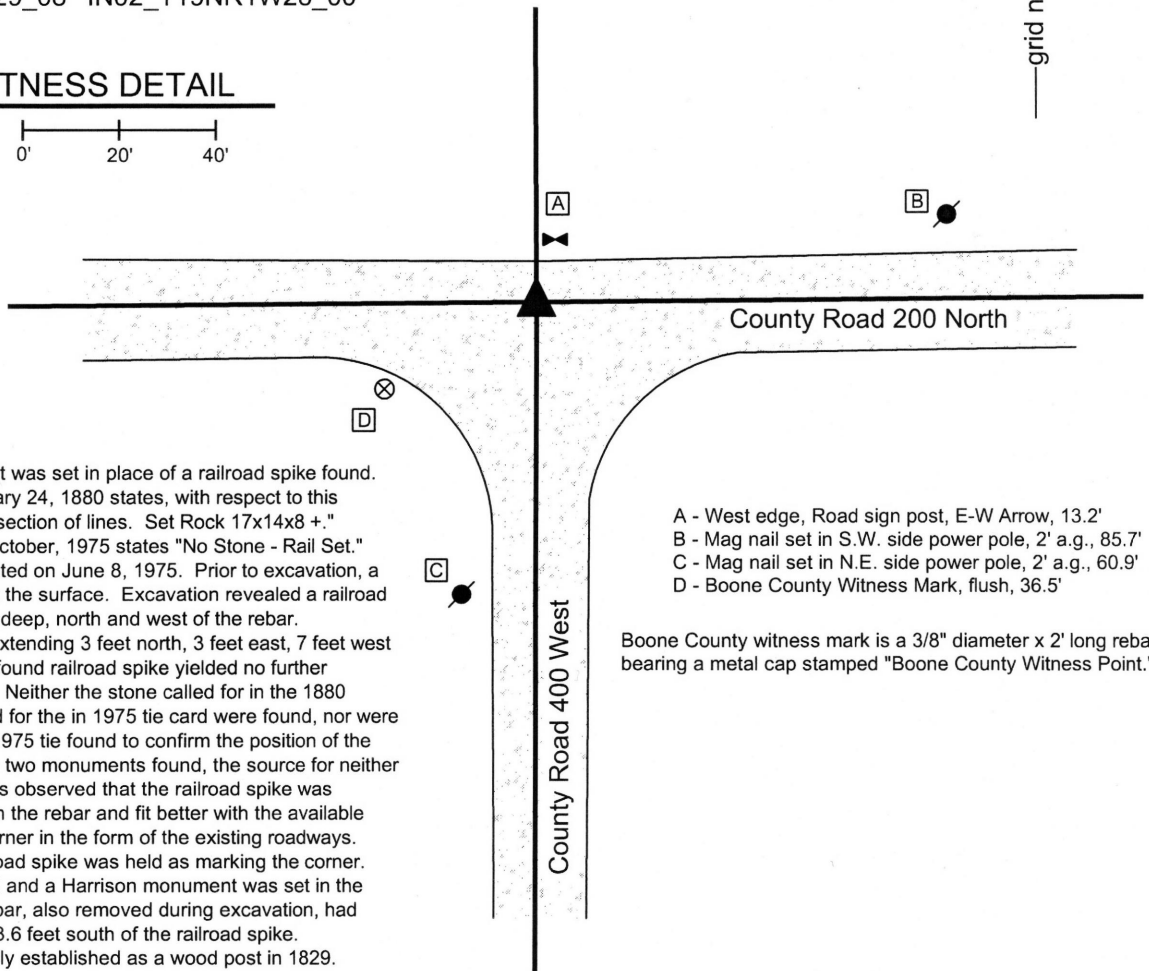
Type of monument: Harrison, 4" disk 'Section Corner'
Depth: six inches below adjacent gravel road surface

Indiana tie card references:
IN02_T19NR1W20_80 IN02_T19NR1W21_72
IN02_T19NR1W29_08 IN02_T19NR1W28_00



CORNER WITNESS DETAIL

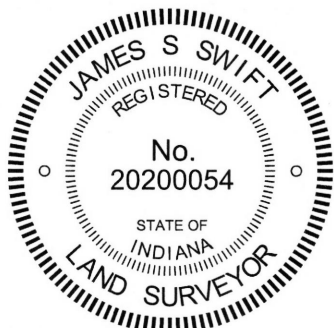
SCALE 1" = 40'



The Harrison monument was set in place of a railroad spike found. A BCS record of February 24, 1880 states, with respect to this corner, "Reestb at intersection of lines. Set Rock 17x14x8 +." A BCS tie card dated October, 1975 states "No Stone - Rail Set." This corner was excavated on June 8, 1975. Prior to excavation, a rebar was found bent at the surface. Excavation revealed a railroad spike found at 8 inches deep, north and west of the rebar. Excavation of an area extending 3 feet north, 3 feet east, 7 feet west and 7 feet south of the found railroad spike yielded no further evidence of the corner. Neither the stone called for in the 1880 record nor the rail called for the in 1975 tie card were found, nor were sufficient ties from the 1975 tie found to confirm the position of the rail. With respect to the two monuments found, the source for neither of which is known, it was observed that the railroad spike was significantly deeper than the rebar and fit better with the available local evidence of the corner in the form of the existing roadways. The position of the railroad spike was held as marking the corner. The spike was removed and a Harrison monument was set in the same position. The rebar, also removed during excavation, had been 1.0 foot east and 3.6 feet south of the railroad spike. This corner was originally established as a wood post in 1829.

- A - West edge, Road sign post, E-W Arrow, 13.2'
- B - Mag nail set in S.W. side power pole, 2' a.g., 85.7'
- C - Mag nail set in N.E. side power pole, 2' a.g., 60.9'
- D - Boone County Witness Mark, flush, 36.5'

Boone County witness mark is a 3/8" diameter x 2' long rebar bearing a metal cap stamped "Boone County Witness Point."



Kenneth E. Hedge, County Surveyor

James S. Swift, IN LS 20200054
March 24, 2016

Jefferson Township	Center Township
Section 20 T19N, R1W	Section 21 T19N, R1W
Section 29 T19N, R1W	Section 28 T19N, R1W