

SECTION CORNER RECORD

SW 400-1000

BOONE COUNTY SURVEYOR'S OFFICE

State Plane grid coordinates NAD83 (2011):

North: 1724143.45 East: 3072032.74 (U.S. survey feet)

Type of monument: Harrison, 4" disk 'Section Corner'

Depth: Six inches below adjacent gravel road surface

Indiana tie card references:

IN02_T18NR2W20_80 IN02_T18NR2W21_72

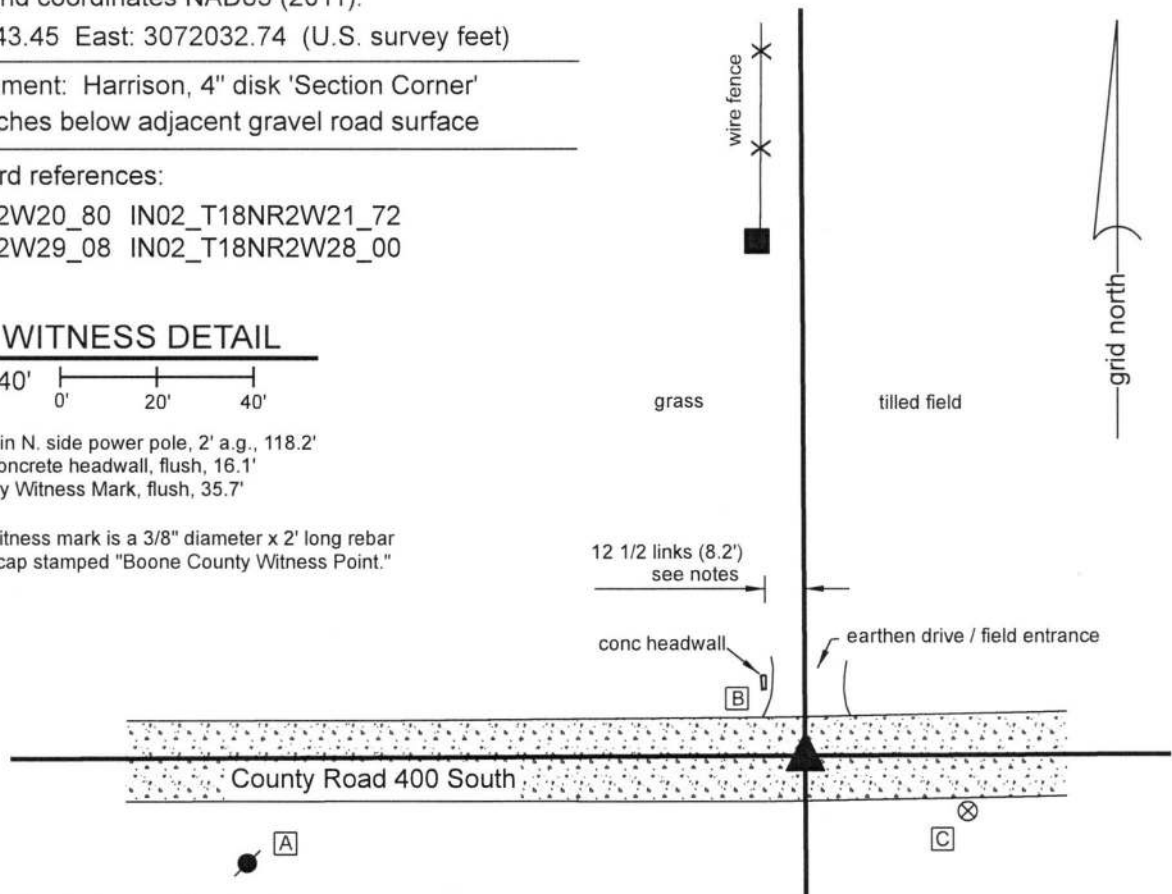
IN02_T18NR2W29_08 IN02_T18NR2W28_00

CORNER WITNESS DETAIL

SCALE 1" = 40'

- A - Mag Nail set in N. side power pole, 2' a.g., 118.2'
- B - S.E. corner concrete headwall, flush, 16.1'
- C - Boone County Witness Mark, flush, 35.7'

Boone County witness mark is a 3/8" diameter x 2' long rebar bearing a metal cap stamped "Boone County Witness Point."



The Harrison monument was set over a stone found.

The position of this corner is discussed in significant detail in BCS records of 1887 and 1889. A record of February 14-16, 1887 gives this explanation for the establishment of the corner: "Point for E found by running line from C and doubling distance from C to D making C to E 79.94 & C to D 39.97 & D to E 39.97." Note, in this record the subject corner is referred to as corner E. A subsequent record of May 2, 1887 states, with respect to this corner, "Set two rocks. One 12x8x6 +. The other 8x7x5 +." Another record, dated June 3, 1889 appears to be the report of a survey performed in response to land owners who questioned the position of the corner and discusses in considerable detail the position of the corner relative to other proximate corners, concluding with the statement, "The parties requiring the resurvey consent that the corner be confirmed as set." This record confirms the position of the two rocks set in 1887. The description of a survey dated May 31, 1943 describes the east line of the property to the west as beginning 12 1/2 links west of the corner. No recent BCS tie cards were found referencing this corner.

The corner was excavated on October 8, 2018. Prior to excavation, no metal monuments were found in the road. A position was calculated for the corner by doubling the distance between the section corner 1/2 mile east (see Corner SW 400-950) and evidence of the corner 1/4 mile east in the form of a centerline/fenceline intersection. It was observed that this calculated position fell almost exactly 12 1/2 links east of the southerly prolongation of a fence beginning approximately 100 feet north of the road, consistent with the 1943 description. Excavation at the calculated position revealed both stones described in the May 2, 1887 record. The top stone was found at 16 inches deep. The stone was vertical, measuring 8 inches tall by 7 inches N-S by 5 inches E-W. The stone was of a reasonably soft material and the top of the stone was damaged during excavation. No mark was found. The stone was removed and the lower stone was found at 26 inches deep, directly below the top stone. This stone measured 12 inches E-W by 8 inches N-S. The thickness of the stone was not measured. An etched "+" mark was clearly visible at the center of the top of the stone. The two stones were accepted as marking the corner. The top stone was removed, the lower stone was left in place and a Harrison monument was set directly over the mark on the lower stone.

This corner was originally established as a wood post in 1820.



Kenneth E. Hedge
Kenneth E. Hedge, County Surveyor

James S. Swift
James S. Swift, IN LS 20200054
November 20, 2018

Jackson Township

Section 20 T18N, R2W	Section 21 T18N, R2W
Section 29 T18N, R2W	Section 28 T18N, R2W

SECTION CORNER RECORD

SW 400-900

BOONE COUNTY SURVEYOR'S OFFICE

State Plane grid coordinates NAD83 (2011):

North: 1724165.86 East: 3077331.35 (U.S. survey feet)

Type of monument: Harrison, 4" disk 'Section Corner'

Depth: Six inches below adjacent gravel road surface

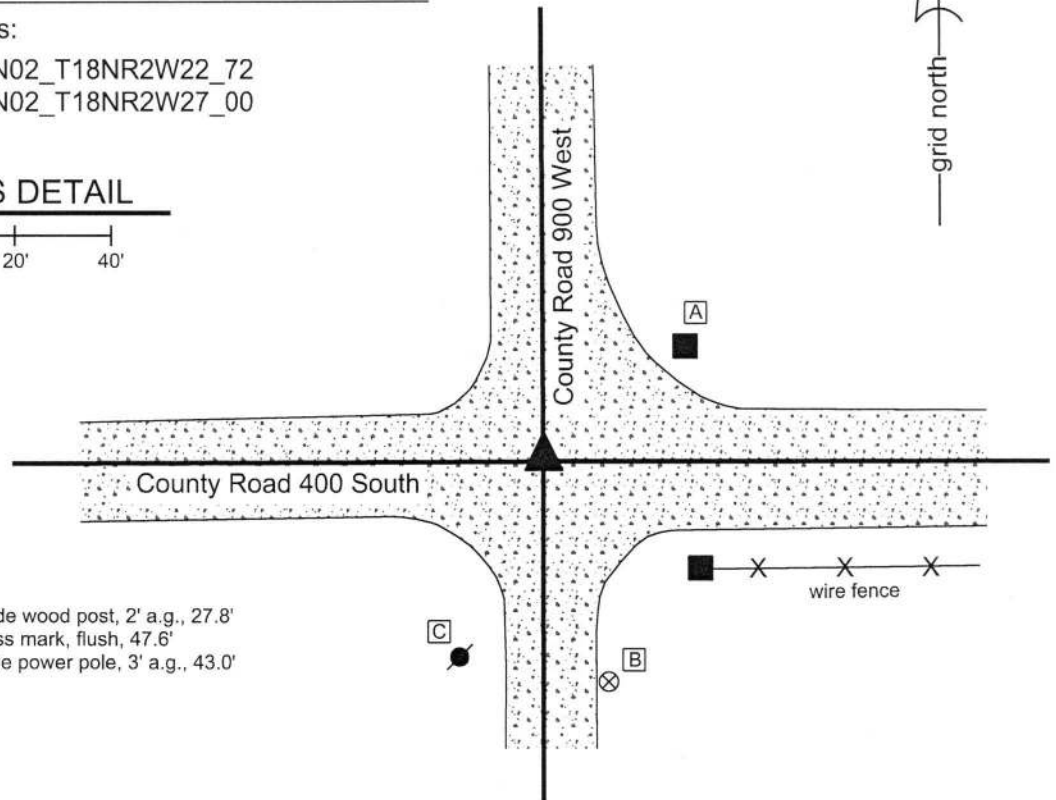
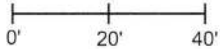
Indiana tie card references:

IN02_T18NR2W21_80 IN02_T18NR2W22_72

IN02_T18NR2W28_08 IN02_T18NR2W27_00

CORNER WITNESS DETAIL

SCALE 1" = 40'



- A - Mag nail set in W. side wood post, 2' a.g., 27.8'
- B - Boone County witness mark, flush, 47.6'
- C - Mag nail set in E. side power pole, 3' a.g., 43.0'

The Harrison monument was set over a stone found. A BCS record of April 20-22, 1870 calls this corner "Rock that was set." A BCS tie card with no date, though evidently originating from the late 1960s or early 1970s, based on the drafting style of the sketch and the names of the crew members, shows this corner as "Stone Located. RRR 7" east of stone."

This corner was excavated on September 28, 2018. Prior to excavation, a section of 5/8 inch rebar was found flush with the road surface. The rebar was bent at 4 inches below the surface of the road, above which point it was generally horizontal and below which point it was generally vertical. Excavation revealed a railroad rail found at 5 inches deep in the same approximate horizontal position as the shaft of the rebar. Further excavation revealed a stone found at 32 inches deep. The stone had a distinct "+" mark at the top, center. With the top 4 inches of the stone exposed, it measured 9 inches N-S by 8 inches E-W. The stone was fully embedded in the clay layer below the road, with the top of the stone coincident with the bottom of the road bed. The "+" mark on the stone was 7 inches west of the railroad rail, in precise conformity with the undated tie card. The tie card clearly indicates that the found stone is held as the corner and that the rail was set 7 inches east, presumably as a witness. It is noted that the section of rail, removed during excavation, was 30 inches long. The vertical separation between the top of the stone and the top of the rail was computed to be 27 inches. It is concluded that the top of the rail was most likely originally set flush with the road bed and that, given that the rail was too long to be placed directly over the stone, the rail was set slightly east of the stone as a witness to the stone. The "+" mark on the top of the stone was held as marking the specific location of the corner and a Harrison monument was set directly over this point. As noted, the rebar and rail, both removed during excavation, had been 7 inches east of the mark on the stone.

This corner was originally established as a wood post in 1820.



Kenneth E. Hedge
 Kenneth E. Hedge, County Surveyor

James S. Swift
 James S. Swift, IN LS 20200054
 October 10, 2018

Jackson Township

Section 21 T18N, R2W	Section 22 T18N, R2W
Section 28 T18N, R2W	Section 27 T18N, R2W

SECTION CORNER RECORD

SW 400-950

BOONE COUNTY SURVEYOR'S OFFICE

State Plane grid coordinates NAD83 (2011):

North: 1724155.33 East: 3074680.79 (U.S. survey feet)

Type of monument: Harrison, 4" disk 'Section Corner'

Depth: Six inches below adjacent gravel road surface

Indiana tie card references:

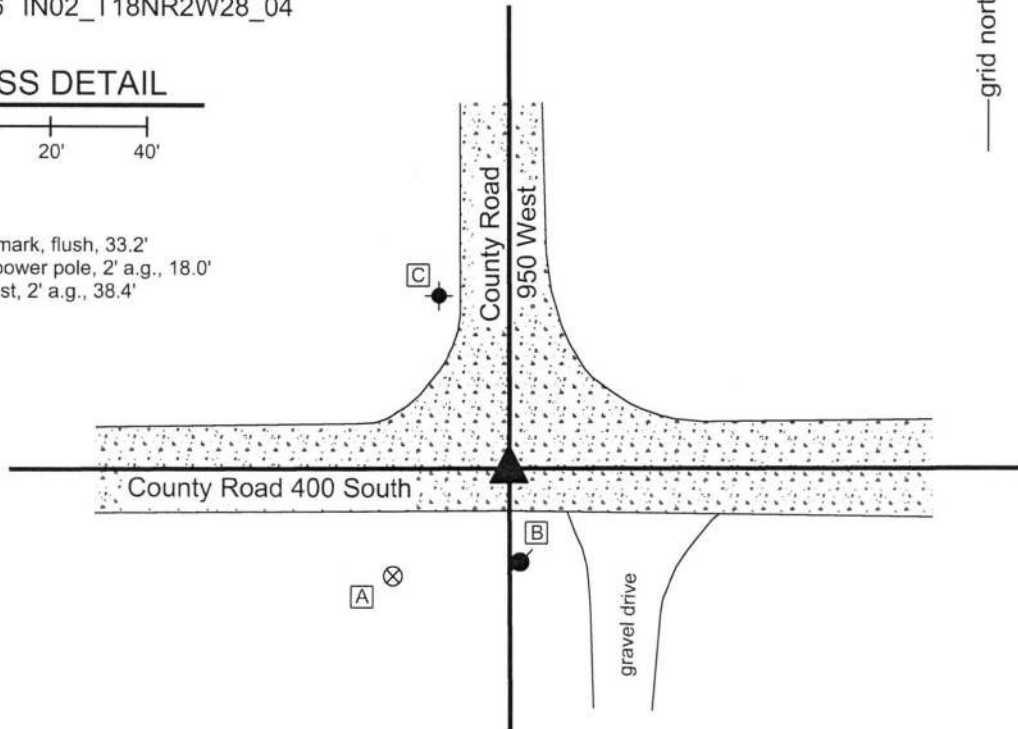
IN02_T18NR2W21_76 IN02_T18NR2W28_04

CORNER WITNESS DETAIL

SCALE 1" = 40'



- A - Boone County witness mark, flush, 33.2'
- B - Mag nail set in N. side power pole, 2' a.g., 18.0'
- C - East edge, stop sign post, 2' a.g., 38.4'



The Harrison monument was set over a stone found.

A BCS record of April 20-22, 1870 calls this corner "a stone that was set." The entry includes a tie reference to a white oak tree. A BCS record of May 2, 1887 states that the corner was "Reestablished from White Oak."

No recent BCS tie cards were found referencing this corner.

Excavation was performed at this corner on September 27, 2018. Prior to excavation, no metal or other artificial monuments were found or known to exist at this corner. Excavation at center of the intersection of County Roads 400 South and 950 West revealed a stone found at 18 inches deep.

The stone was vertical with a distinct high point. The stone was embedded in the clay layer below the road with the top of the stone coincident with the bottom of the road bed. The top 7 inches of the stone were exposed, at which point it measured 6 inches N-S by 10 inches E-W. The west edge of the stone was partially exposed and measured to be approximately 15 inches tall. No specific marks were detected on the stone. The north and south sides were flat and vertical while the stone rounded across the top in the E-W dimensions. The stone was accepted as providing the best available evidence of the original position of the corner and was held as marking the corner. A Harrison monument was set directly over the top, high point of the stone.

This corner was originally established as a wood post in 1820.



Kenneth E. Hedge
Kenneth E. Hedge, County Surveyor

James S. Swift
James S. Swift, IN LS 20200054
October 10, 2018

Jackson
Township

Section 21
T18N, R2W

Section 28
T18N, R2W

SECTION CORNER RECORD

SW 500-900

BOONE COUNTY SURVEYOR'S OFFICE

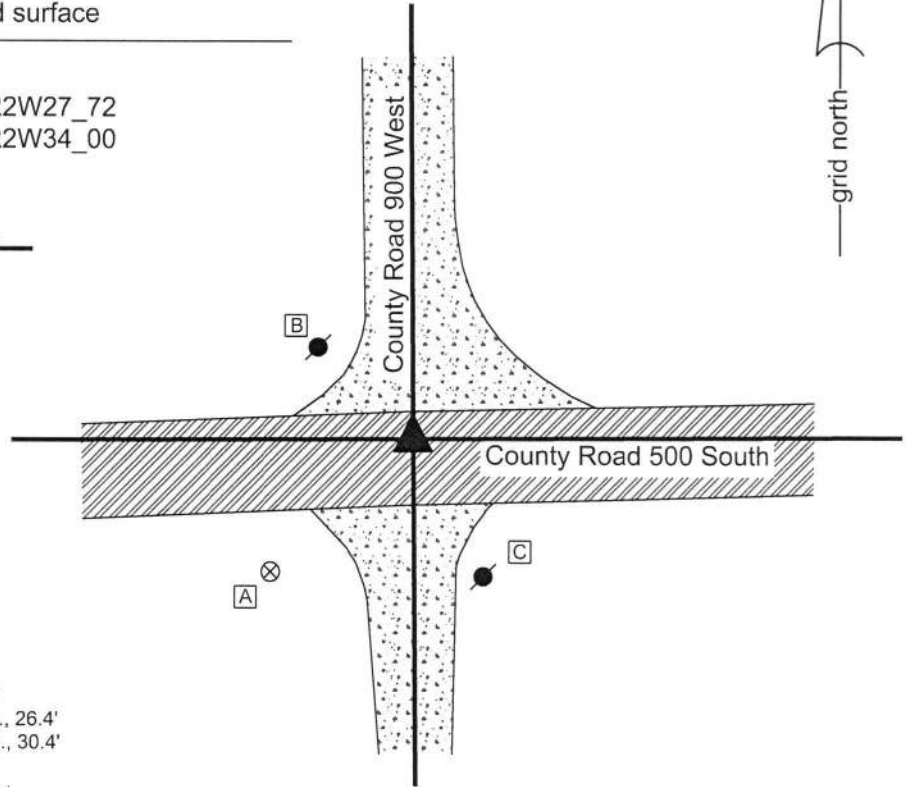
State Plane grid coordinates NAD83 (2011):
North: 1718883.32 East: 3077353.15 (U.S. survey feet)

Type of monument: Harrison, 4" disk 'Section Corner'
Depth: One inch below adjacent road surface

Indiana tie card references:
IN02_T18NR2W28_80 IN02_T18NR2W27_72
IN02_T18NR2W33_08 IN02_T18NR2W34_00

CORNER WITNESS DETAIL

SCALE 1" = 40'



- A - Boone County witness mark, flush, 40.6'
- B - Mag nail set in E. side power pole, 2' a.g., 26.4'
- C - Mag nail set in N. side power pole, 2' a.g., 30.4'

The Harrison monument was set over a stone found.

No specific descriptions of this corner were found in the BCS Surveyor's Record. The corner is shown as the terminal point for measurements in several entries, including an entry dated November 13, 1893. This entry pertains to the establishment of the south quarter corner of Section 27, clearly indicating that the quarter corner was set at the midpoint between the southeast and southwest corners of the section. No monument was described for the southwest corner of Section 27, being the subject corner of this documentation sheet, in the 1893 entry. However, it has been observed at numerous other corners throughout Boone County that such measurement references are associated with a stone found at the corner. A tie card originating from an unknown source, dated January 14, 1980, attributed to "Ken and Tim" with reference to Job 800104 shows the corner as "No stone. Set Brass Rod."

This corner was excavated on September 28, 2018. Prior to excavation, a spike with a steel top and brass shaft was found at the intersection of the two county roads. This is believed to be the monument set in 1980. Also, prior to excavation, an approximate position for the corner was estimated with respect to the overall centerline of the east-west roadway as it exists between the subject corner and the intersection with State Road 75, 1 mile east. This estimated position indicated that the corner held in 1893 could be up to 3 feet north of the found spike. Excavation proved this estimation to be accurate. A stone was found at 21 inches deep, 2.5 feet north of the spike. The stone was embedded in the clay layer below the road bed with the top of the stone protruding 2 inches into the bottom of the road bed. With the top 10 inches of the stone exposed, it measured 15 inches E-W by 11 inches N-S and was clearly larger yet in all dimensions. The high point of the stone was found at the northeast edge of the rock. The stone was clearly set by humans to mark the corner and fit remarkably well with the estimation of the position of the corner with respect to the roadway to the east, in conformity with the 1893 record. The stone was accepted as providing the best available evidence of the corner and a Harrison monument was set directly over the high point of the stone. The brass shafted spike, removed during excavation, had been 2.5 feet south of the stone. It is noted that the sketch from 1980 clearly indicates that no stone was found at the corner, indicating that a stone was searched for but not found.

This corner was originally established as a wood post in 1820.

Jackson Township



Kenneth E. Hedge
Kenneth E. Hedge, County Surveyor

James S. Swift
James S. Swift, IN LS 20200054
October 10, 2018

Section 28 T18N, R2W	Section 27 T18N, R2W
Section 33 T18N, R2W	Section 34 T18N, R2W

SECTION CORNER RECORD

SW 500-1000

BOONE COUNTY SURVEYOR'S OFFICE

State Plane grid coordinates NAD83 (2011):

North: 1718861.47 East: 3072064.70 (U.S. survey feet)

Type of monument: plug in monument box, INDOT 'Type B'

Depth: Three inches below adjacent road surface

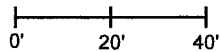
Indiana tie card references:

IN02_T18NR2W28_72 IN02_T18NR2W29_80

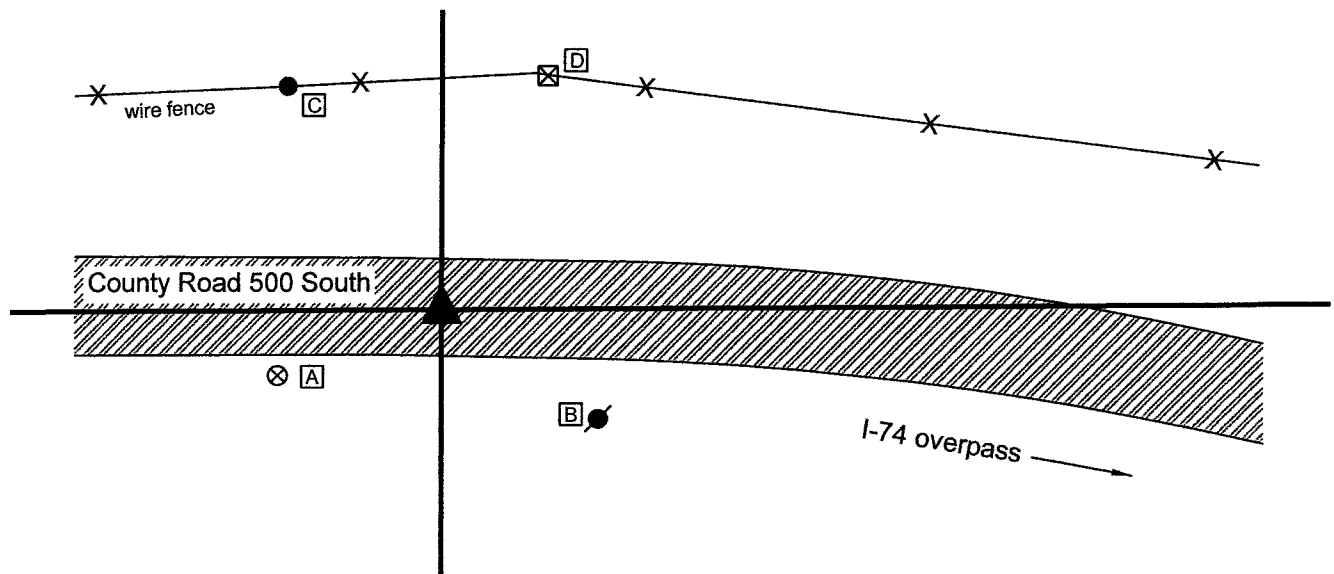
IN02_T18NR2W32_08 IN02_T18NR2W33_00

CORNER WITNESS DETAIL

SCALE 1" = 40'



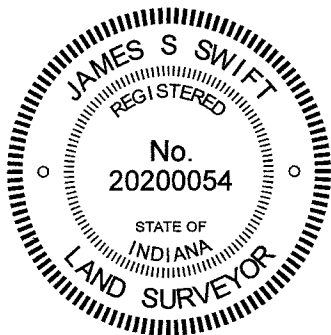
- A - Boone County witness mark, flush, 36.9'
- B - Mag nail set in N. side power pole, 2' a.g., 39.9'
- C - Mag nail set in S. side wood post, 2' a.g., 56.6'
- D - S.W. corner, INDOT ROW marker, flush, 53.4'



The INDOT Type B Monument was found and held as marking the corner.

A BCS record dated April 22, 1870 states, with respect to this corner, "Set Rock 17.16.15 +." No recent BCS tie cards were found referencing the corner. The plans for interstate 74, as revised February 16, 1974, show the overpass of County Road 500 South over I-74 as project 74-2(33)47. The sheet provided by INDOT is not entirely legible but appears to show the section line crossing County Road 500 South with the label "Monument Required" apparently pointing at the section corner at a point slightly west of a substantial bend in the R/W on the north side of the road. Station data and specifics of the corner are not clear, due to the poor quality of this particular plan sheet. However, it appears that a monument was set to mark the section corner at the time of the construction of the overpass. The position of the found monument appears to agree with the position shown on the plans, though this is not specifically proven due to the lack of legible information. The found monument falls in an area of substantial cut, hence no excavation was performed, due to the fact that any ancient monument such as a stone would have been destroyed when the roadway was cut. It is noted, however, that the found monument agrees remarkably well with the relative positions of adjacent corners. The Type B monument was held as marking the corner.

This corner was originally established as a wood post in 1820.



Kenneth E. Hedge
 Kenneth E. Hedge, County Surveyor

James S. Swift
 James S. Swift, IN LS 20200054
 June 16, 2021

Jackson Township

Section 29 T18N, R2W	Section 28 T18N, R2W
Section 32 T18N, R2W	Section 33 T18N, R2W