

SECTION CORNER RECORD

NE 700-300

BOONE COUNTY SURVEYOR'S OFFICE

State Plane grid coordinates NAD83 (CORSS96):

North: 1782761.20 East: 3140145.16 (U.S. survey feet)

Type of monument: Harrison, 4" disk 'Section Corner'

Depth: six inches below adjacent gravel road surface

Indiana tie card references:

IN02_T20NR1E28_80 IN02_T20NR1E27_72

IN02_T20NR1E33_08 IN02_T20NR1E34_00

CORNER WITNESS DETAIL

SCALE 1" = 40'

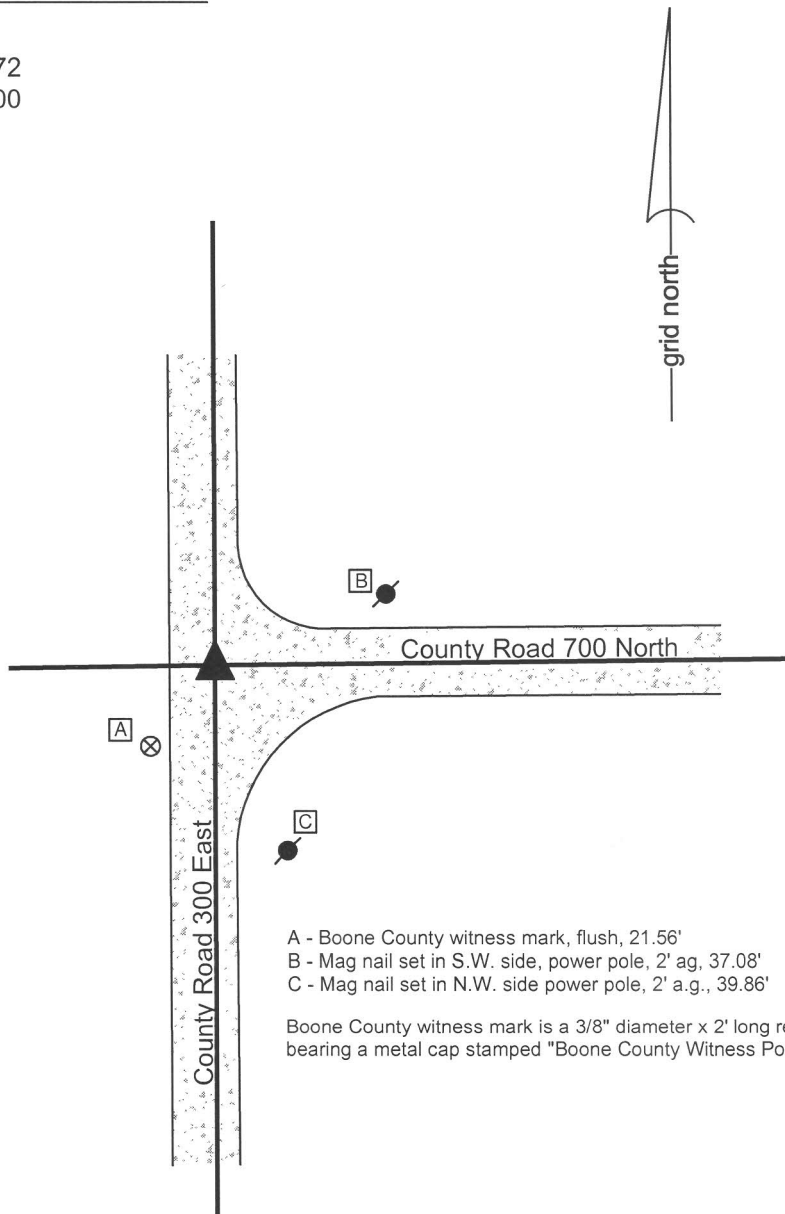


The Harrison monument was set over an etched "+" mark on the top of a stone.

A BCS record dated June 18, 1888 states, with respect to this corner, "Re-est. by the line H to h. Set rock 24, 14, 12 +". It is noted that "the line H to h" refers to the corners approximately 1/2 mile and 1/4 mile south, respectively. A BCS tie card dated September, 1975 states "Found stone Still in RRR" which is interpreted to mean that a stone was found, left in place and a railroad rail was set near to or against the stone.

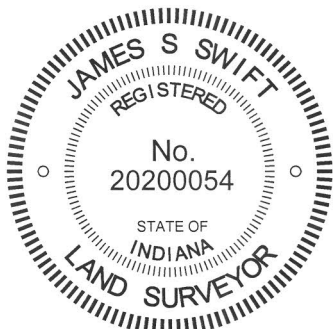
This corner was excavated on May 21, 2014. Prior to excavation, the top of a section of railroad rail was found at 2 inches below grade, apparently leaning to the south. Excavation revealed another railroad rail, leaning slightly to the north, south and west of the first rail. Further excavation revealed a stone found at 12 inches deep. The rail which had been found first was leaning over the top of the stone. The other rail was approximately 1 foot west of the top of the stone. The stone had a clearly etched "+" mark on the top. With 8 inches of the top of the stone exposed, it measured 12 inches E-W by 10 inches N-S and appeared to be vertical and oriented in cardinal directions. The stone was embedded in the clay layer below the road, protruding approximately 3 inches into the bottom of the road bed. With the top portion of the stone exposed, the dimensions of the stone approximated the 1888 record dimensions and it is expected that complete excavation would demonstrate that the stone is of very similar dimensions as called for in the 1888 record. With the similar dimensions and the obvious mark, the stone was accepted as being the same rock set in 1888 and was held as marking the corner. The stone was left in place, the two sections of railroad rail were removed and a Harrison monument was set directly over the etched "+" mark on the top of the stone.

This corner was originally established as a wood post in 1822.



- A - Boone County witness mark, flush, 21.56'
- B - Mag nail set in S.W. side, power pole, 2' ag, 37.08'
- C - Mag nail set in N.W. side power pole, 2' a.g., 39.86'

Boone County witness mark is a 3/8" diameter x 2' long rebar bearing a metal cap stamped "Boone County Witness Point."



Kenneth E. Hedge

 Kenneth E. Hedge, County Surveyor

James S. Swift

 James S. Swift, IN LS 20200054
 March 27, 2015

Clinton Township

Section 28 T20N, R1E	Section 27 T20N, R1E
Section 33 T20N, R1E	Section 34 T20N, R1E

SECTION CORNER RECORD

NE 700-350

BOONE COUNTY SURVEYOR'S OFFICE

State Plane grid coordinates NAD83 (CORS96):

North: 1782790.70 East: 3142769.82 (U.S. survey feet)

Type of monument: Harrison, 4" disk 'Section Corner'

Depth: six inches below adjacent gravel road surface

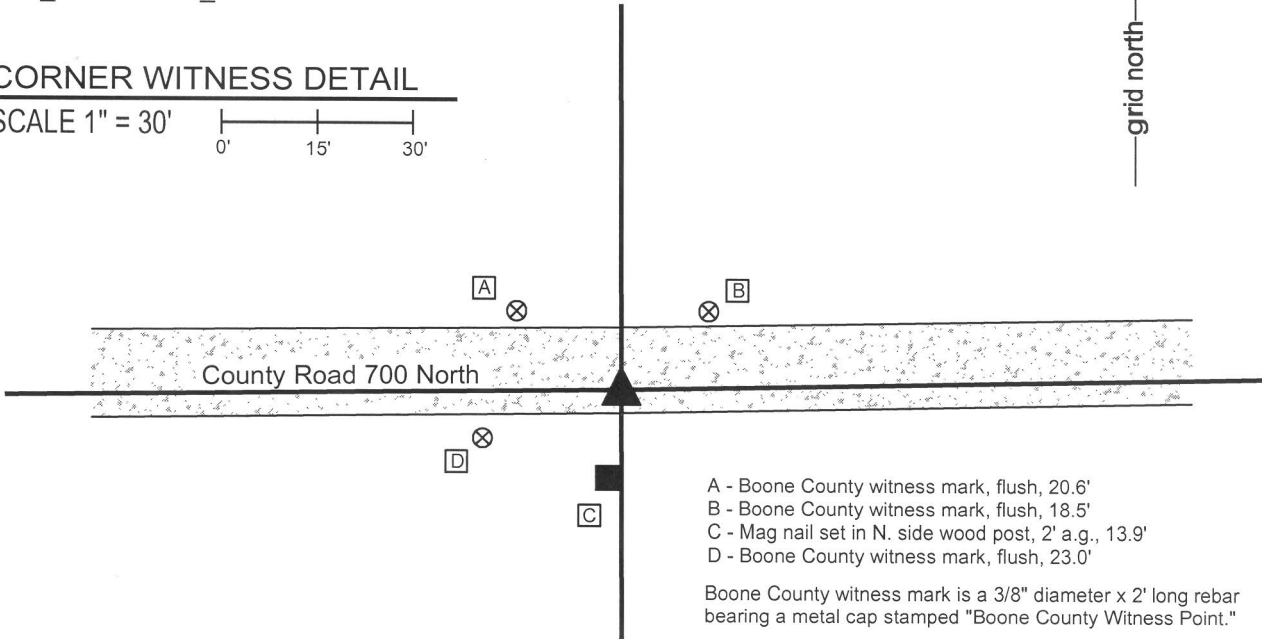
Indiana tie card references:

IN02_T20NR1E27_76

IN02_T20NR1E34_04

CORNER WITNESS DETAIL

SCALE 1" = 30'



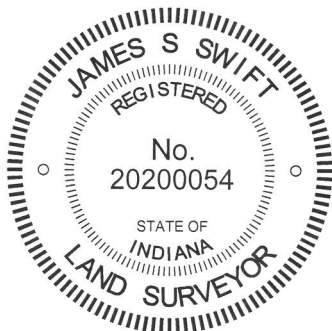
- A - Boone County witness mark, flush, 20.6'
- B - Boone County witness mark, flush, 18.5'
- C - Mag nail set in N. side wood post, 2' a.g., 13.9'
- D - Boone County witness mark, flush, 23.0'

Boone County witness mark is a 3/8" diameter x 2' long rebar bearing a metal cap stamped "Boone County Witness Point."

The Harrison monument was set over a stone found.

No specific descriptions of this corner were found in the BCS Surveyor's Record. The corner is mentioned as the terminal point for measurements in records of 1863 and 1872, implying that some object was present from which to measure at that time. No recent BCS tie cards were found referencing this corner.

Excavation occurred at this corner on May 22, 2014. Prior to excavation, a 5/8 inch diameter rebar was found, bent and slightly disturbed, at the surface of the road, near the south edge of the gravel roadway. Excavation revealed a stone found at 11 inches deep, south and east of the rebar. The stone was fully embedded in the clay layer below the road bed with the top of the stone being at the bottom of the road bed. The stone had a rounded top. With 9 inches of the top of the stone exposed, it measured 9 inches E-W by 10 inches N-S and remained stable in the clay. Clearly the stone was much larger than that part which was exposed. The stone appeared to be vertical, though the total height of the stone was not determined. No specific marks were found on the stone. The lack of marks is typical for stones for which the records are similar, wherein it may be concluded that the County Surveyor found and measured from the stone, rather than having set it. The stone was accepted as providing the best available evidence of the corner and the high point of the stone, being at the top, center of the rock was held as the corner. The rebar, removed during excavation, had been 0.5 foot north and 1.0 foot west of this point. The top 9 inches of the stone were encased in concrete and a short Harrison monument, actually being a 2 inch spacer with a lid, was set over the high point of the stone. The wood post on the south side of the road is approximately 2 feet west of the corner. This post appeared to be more of the type intended to denote a residential parcel from tillable ground than an ancient corner post. This corner was originally established as a wood post in 1822.



Kenneth E. Hedge

 Kenneth E. Hedge, County Surveyor

James S. Swift

 James S. Swift, IN LS 20200054
 March 27, 2015

Clinton Township

Section 27
T20N, R1E

Section 34
T20N, R1E

PHOTOGRAPHIC DOCUMENTATION

Date of photography: May 22, 2014

The stone as originally found.



The stone from above and west.



The stone from above. The marks seen in this picture were made by the excavator at the time of discovery of the stone.



View from the north, looking across the stone and towards the south.



The stone before the top was encased in concrete and the harrison monument set.



For details and documentation, refer to related sheet "Section Corner Record."

SECTION CORNER RECORD

NE 700-400

BOONE COUNTY SURVEYOR'S OFFICE

State Plane grid coordinates NAD83 (2011):

North: 1782844.21 East: 3145397.87 (U.S. survey feet)

Type of monument: 5/8 inch rebar with metal cap 'Boone County Surveyor'

Depth: Flush with adjacent ground

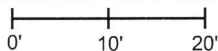
Indiana tie card references:

IN02_T20NR1E27_80 IN02_T20NR1E26_72

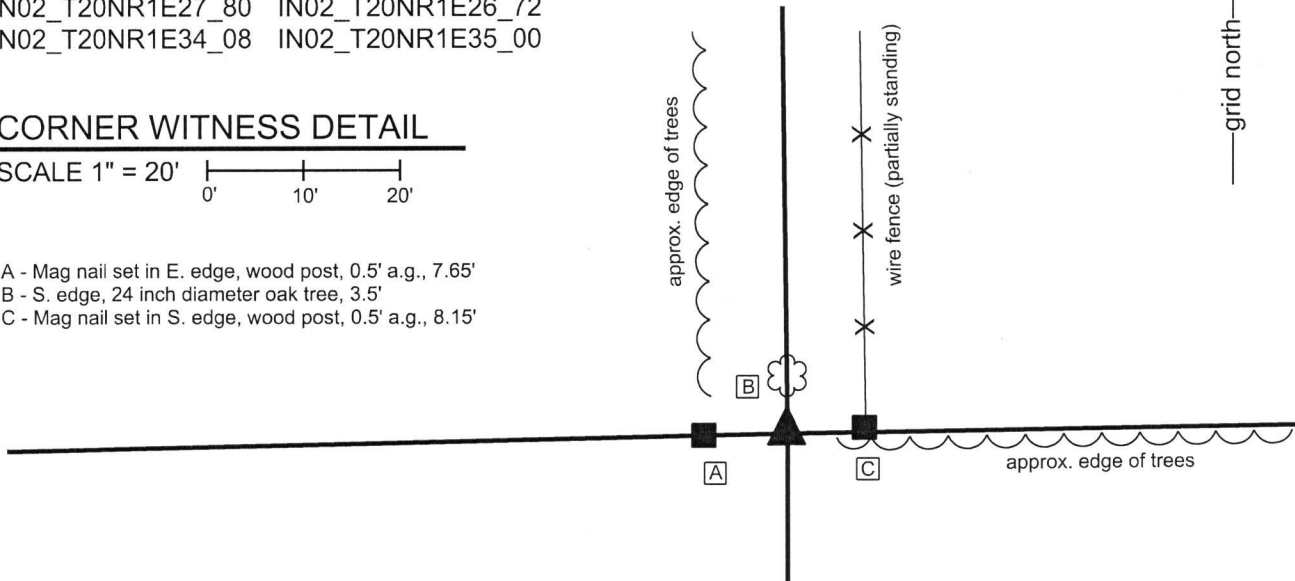
IN02_T20NR1E34_08 IN02_T20NR1E35_00

CORNER WITNESS DETAIL

SCALE 1" = 20'

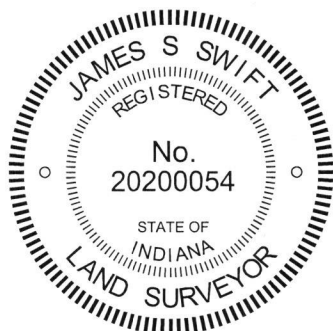


- A - Mag nail set in E. edge, wood post, 0.5' a.g., 7.65'
- B - S. edge, 24 inch diameter oak tree, 3.5'
- C - Mag nail set in S. edge, wood post, 0.5' a.g., 8.15'



The corner is monumented by a 30 inch length of 5/8 inch diameter rebar with a metal cap stamped 'Boone County Surveyor'. The rebar was set at a calculated position, in-line with and equidistant from posts approximately 8 feet east and west of the corner. No specific descriptions of this corner were found in the BCS Surveyor's Record. Neither recent BCS tie cards nor surveys recorded in the Office of the Boone County recorder found which reference the corner. Minor excavation and substantial probing were performed in the immediate vicinity of this corner on several occasions during April, 2018. The existing evidence of the corner is in the form of two posts, 16 feet apart, both of which appear to represent the corners of old fences. The westerly of the two posts was found to have fencing cut-off toward the south and the easterly post is in-line with ancient fencing toward the north. Both posts are in-line with evidence of occupation to the east and west in the form of a field division to the west and the edge of a woods to the east. Detailed investigation of the positions of the posts with respect to remote evidence of proximate corners yields the conclusion that the actual corner is between the two posts. Among the supporting evidence to this conclusion is the observation that a calculated point which represents a double-distance position with respect to the corner approximately 1/2 mile east (see BCS corner NE-700-450) and evidence of the 1/8 corner approximately 1/4 mile of the subject corner, in the form of a found wood corner post with fencing cut-off in all four cardinal directions, would place the theoretical corner approximately 5 feet east of the midpoint between the two posts near the subject corner. A similar computation with respect to the corner approximately 1/2 mile west of the subject corner (see BCS corner NE 700-350) and various evidence of the corner approximately 1/4 mile west of the subject corner, including a found rebar, a post on the east edge of County Road 375 East and ties from a BCS tie card dated June 24, 1975, place the theoretical position for the corner either at the midpoint between the posts or up to 4 feet west thereof. A line extended from the corners 1 mile south and 1/2 mile south, respectively, (see BCS Corners NE 600-400 and NE 650-400) also falls between the posts, slightly west of the midpoint between the posts. Also, testimony from the adjacent property owner, Marcus Wiley, who's family has lived and farmed in this immediate vicinity since 1834, states that family history reports that a north-south lane once ran north from this corner. Given that the posts are almost one rod apart, a one-rod wide lane would explain why the fence end posts are either side of the most likely position for the corner. Minor excavation and probing revealed no further evidence of the corner in the form of a stone or other similar evidence. The preponderance of evidence clearly indicates that the corner falls between the two found end posts and the corner was established at the midpoint between the posts. Due to the presence of a mulberry tree immediately north of the corner (tree cut down, but stump remaining), no Harrison monument was set and the rebar described above was set to mark the corner.

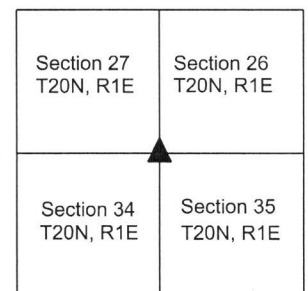
This corner was originally established as a wood post in 1822.



Kenneth E. Hedge
 Kenneth E. Hedge, County Surveyor

James S. Swift
 James S. Swift, IN LS 20200054
 January 30, 2019

Clinton Township



SECTION CORNER RECORD

NE 750-300

BOONE COUNTY SURVEYOR'S OFFICE

State Plane grid coordinates NAD83 (CORS96):

North: 1785398.00 East: 3140141.60 (U.S. survey feet)

Type of monument: Harrison, 4" disk 'Section Corner'

Depth: six inches below adjacent gravel road surface

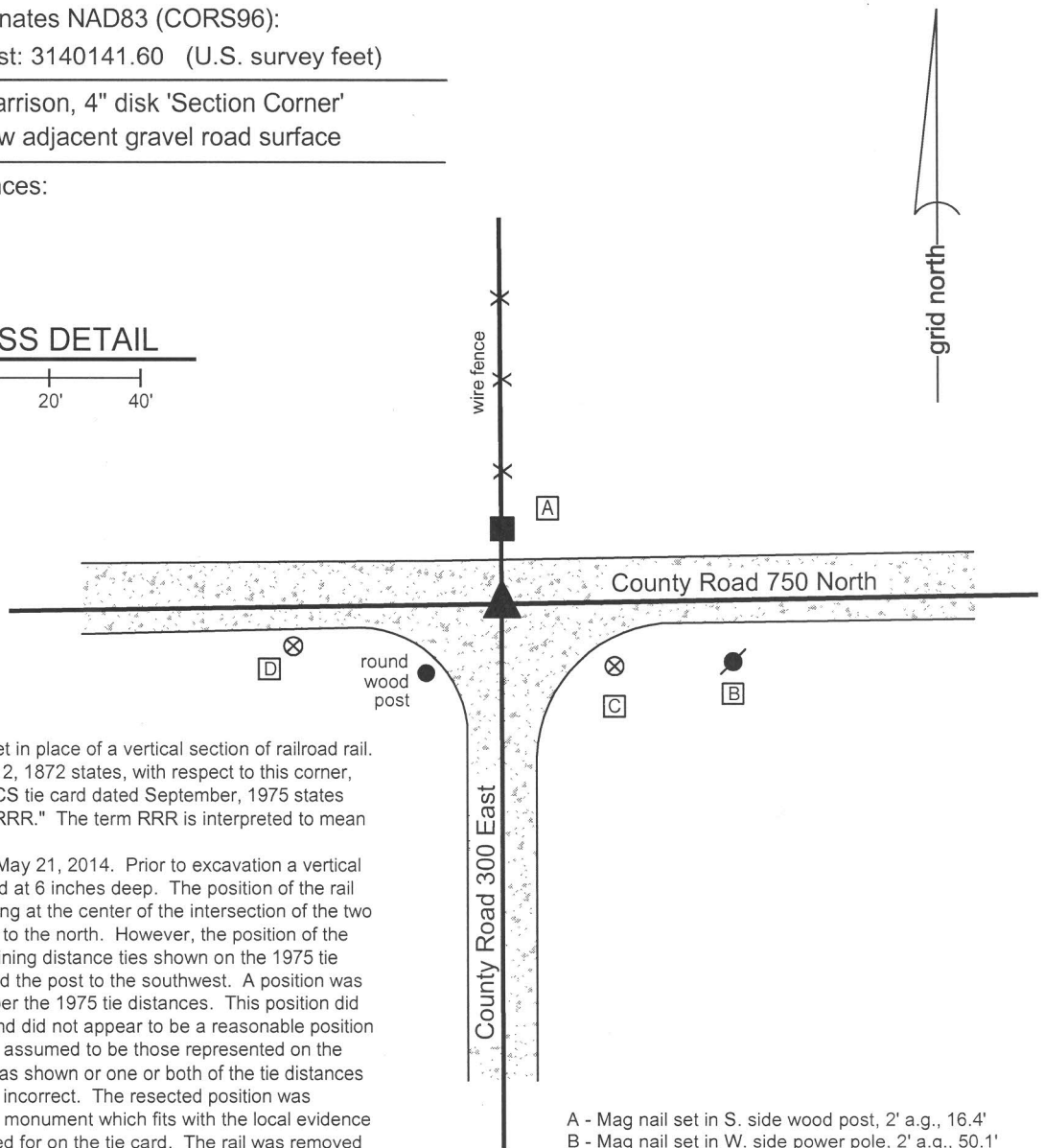
Indiana tie card references:

IN02_T20NR1E27_36

IN02_T20NR1E28_44

CORNER WITNESS DETAIL

SCALE 1" = 40'

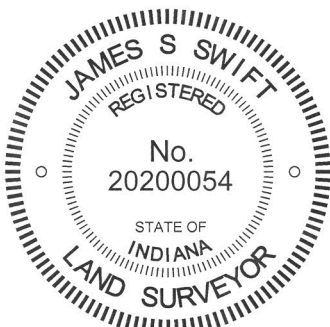


The Harrison monument was set in place of a vertical section of railroad rail. A BCS record dated February 12, 1872 states, with respect to this corner, "Reestablished by stake." A BCS tie card dated September, 1975 states "Stone Found - Replaced with RRR." The term RRR is interpreted to mean Railroad Rail.

This corner was excavated on May 21, 2014. Prior to excavation a vertical section of railroad rail was found at 6 inches deep. The position of the rail fits well with local evidence, being at the center of the intersection of the two roads and in line with the fence to the north. However, the position of the rail did not fit with the two remaining distance ties shown on the 1975 tie card, being the post to north and the post to the southwest. A position was resected from these tie points per the 1975 tie distances. This position did not fit with the local evidence and did not appear to be a reasonable position for the corner. Either the posts assumed to be those represented on the 1975 tie card are not the same as shown or one or both of the tie distances shown on the 1975 tie card are incorrect. The resected position was rejected in favor of the physical monument which fits with the local evidence and is of the same type as called for on the tie card. The rail was removed and excavation of a large area surrounding it yielded no further evidence of the corner. The rail is believed to be in the position of the stone found in 1975 and was accepted as the best available evidence of the corner. The rail was replaced with a Harrison monument in the same position. This corner was originally established as a wood post in 1822.

- A - Mag nail set in S. side wood post, 2' a.g., 16.4'
- B - Mag nail set in W. side power pole, 2' a.g., 50.1'
- C - Boone County witness mark, flush, 28.1'
- D - Boone County witness mark, flush, 46.4'

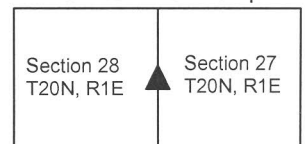
Boone County witness mark is a 3/8" diameter x 2' long rebar bearing a metal cap stamped "Boone County Witness Point."



Kenneth E. Hedge
 Kenneth E. Hedge, County Surveyor

James S. Swift
 James S. Swift, IN LS 20200054
 March 27, 2015

Clinton Township



SECTION CORNER RECORD

NE 750-400

BOONE COUNTY SURVEYOR'S OFFICE

State Plane grid coordinates NAD83 (2011):

North: 1785474.66 East: 3145377.56 (U.S. survey feet)

Type of monument: 30" length of 5/8" diameter rebar with metal cap stamped 'Boone County Surveyor'

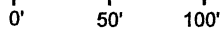
Depth: Flush with adjacent ground

Indiana tie card references:

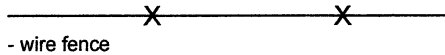
IN02_T20NR1E27_44 IN02_T20NR1E26_36

CORNER WITNESS DETAIL

SCALE 1" = 100'



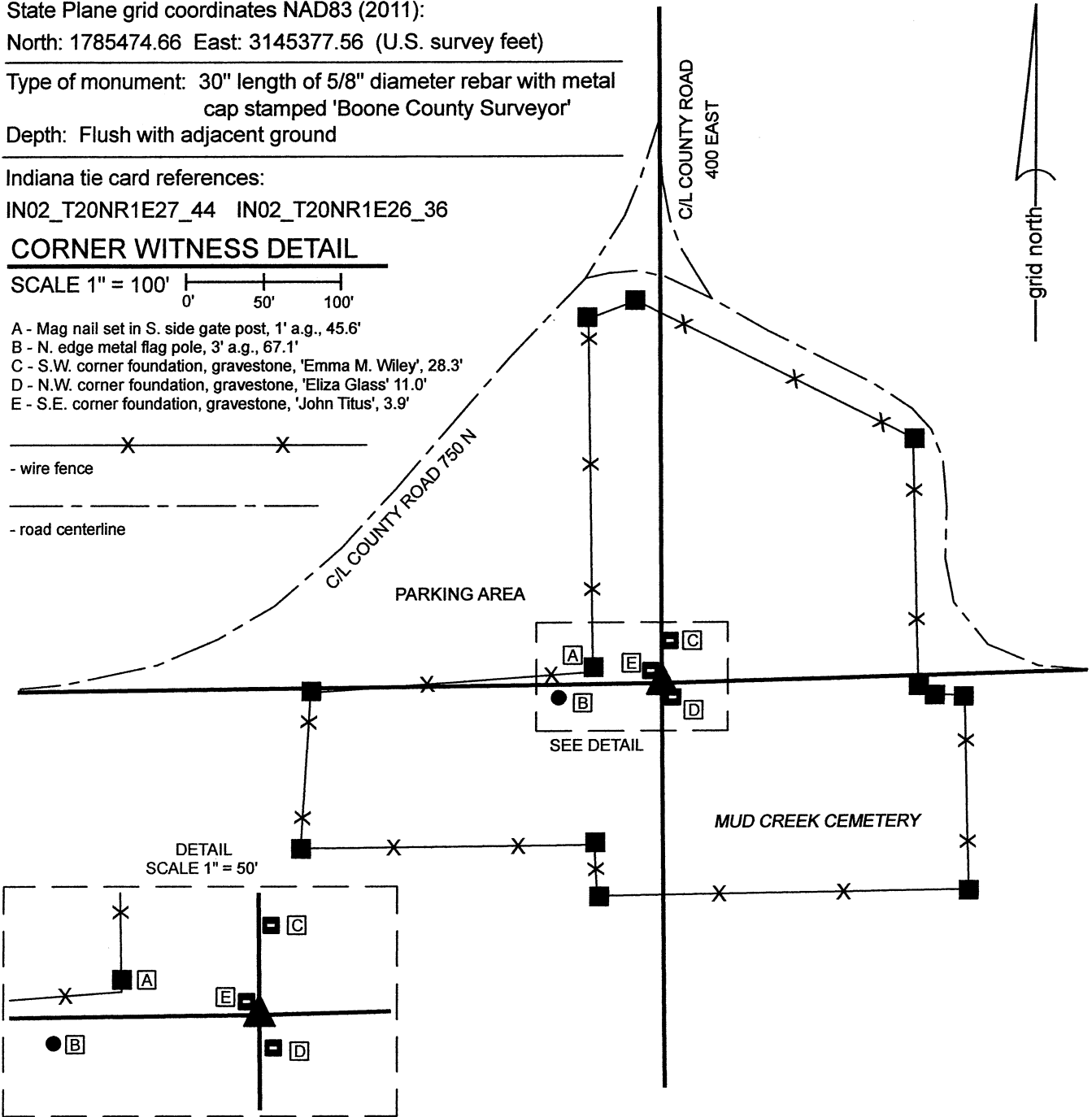
- A - Mag nail set in S. side gate post, 1' a.g., 45.6'
- B - N. edge metal flag pole, 3' a.g., 67.1'
- C - S.W. corner foundation, gravestone, 'Emma M. Wiley', 28.3'
- D - N.W. corner foundation, gravestone, 'Eliza Glass' 11.0'
- E - S.E. corner foundation, gravestone, 'John Titus', 3.9'



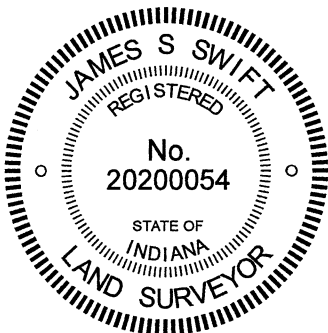
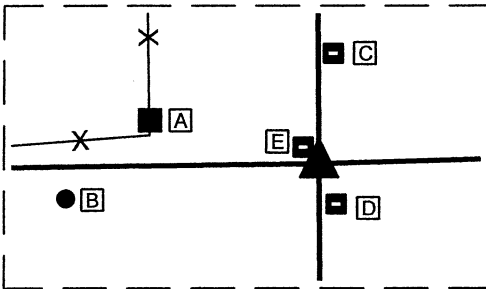
- wire fence



- road centerline



DETAIL SCALE 1" = 50'



Kenneth E. Hedge
Kenneth E. Hedge, County Surveyor

James S. Swift
James S. Swift, IN LS 20200054

September 8, 2021 PAGE 1 OF 2

Clinton Township

Section 27 T20N, R1E	Section 26 T20N, R1E
-------------------------	-------------------------

SECTION CORNER RECORD

NE 750-400

BOONE COUNTY SURVEYOR'S OFFICE

WRITTEN DOCUMENTATION

The rebar marking the corner was set in a calculated position.

This corner falls within the Mud Creek Cemetery. This corner is referenced in a BCS record of October 20, 1849. No description of the corner is given in this record. The corner is noted as a terminal point for measurements, but not specifically described, in a BCS record of May 4-5, 1865. The corner is also referenced in a record of June 15, 1874 which describes the limits of 'Meeting House Lot' with reference that the corners were reestablished in the 'same places.' This reference to the 'same places' appears to be a reference to the earlier survey of the same property, described in the record of October 20, 1849. The 1874 record describes a parcel for which the geometry closes reasonably well. Another record, dated December 2, 1881 appears to call the subject corner 'half-mile stake, stone mark +.' This record gives the geometry for a parcel which is clearly not the same geometry as referenced in the 1874 record. The geometrical figure described by the 1881 record grossly fails to close. The current deed for the property, Deed Record 218, page 809, Mud Creek Cemetery, Inc., describes two parcels, both of which grossly fail to close geometrically. Parts of this description appear to be derived from the 1881 BCS record.

The corner is referenced on two surveys recorded in the Office of the Boone County Recorder. Instrument 9801211 calls the corner Iron Bar (found) and Instrument 200900004658 calls the corner Iron Pin (found). A large bolt, set vertically, with a hexagonal top was found at what appears to be the positions called as Iron Bar and Iron Pin on those surveys.

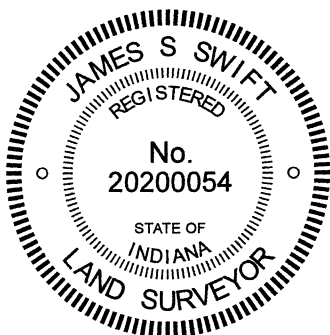
All of the descriptions of the cemetery / grave yard / meeting house lot were plotted and the effort was made to reconcile the described parcels with the existing configuration of fences and roads delineating the area currently occupied as the cemetery. As noted above, the 1881 description found in the BCS Surveyor's Record and the two descriptions in Deed Record 218, page 809, all significantly fail to close geometrically, hence estimation of the bounds described therein is imprecise at best. It was observed that the current configuration of fences and roads does not fit with any of the descriptions, as plotted. However, it was observed that the 1874 record, being the one description that does close geometrically, yields a configuration which matches reasonably well with the relative positions of the westerly portion of the south fence, the northerly portion of the east fence and the northeasterly fence. It was also observed that this harmony between the descriptions and those portions of fence works best as anchored at a position for the corner which happens to work remarkably well the the locations of the approximate road centers as they approach the cemetery from the north, east and west. The specific position which yields the best fit with 1874 record and fences was computed on a straight line connecting the northeast and southeast corners of section 27 (see BCS Corners NE 800-400 and NE 700-400) at a distance of 2625.77 feet southerly from said northeast corner. This distance represents the distance of 39.62 chains reported between the northeast corner of section 27 and the subject corner in the record of May 4-5, 1865, as adjusted by the standard scale factor of 1.00415 applied to measurements reported in the BCS Surveyor's Record between 1860 and 1895. It is observed that this position also works well with two calls in Deed Record 218, page 809, being the call of 12 poles east, which generally fits with the southern portion of the easterly fence and the implied call of 6 and 4/10 poles, south from the corner, which works reasonably well with the west portion of the south fence. No description was found which accounts for the position of the easterly portion of the south fence.

Given the general harmony of the 1874 record with parts of the existing fence surrounding the cemetery, as anchored at a position computed with respect to the distances reported in the 1865 record, this computed position was held as the most reasonable estimation of the original position of the corner, perpetuated in 1849, 1865 and 1874. As noted above, this position also fits remarkably well with the positions of the physical roadways as they approach the cemetery area from the north, east and west.

Extensive probing in the vicinity of the computed position revealed no corner stone. It appears that the specific computed position of the corner is not located within a grave site, but clearly excavation and disruption of the area has happened in the many years since the creation of the records relied upon to establish the position of the corner. Substantial excavation in search of a corner stone was not performed, due to the proximity to numerous graves. The computed position held as the position of the corner was marked with a 30-inch length of 5/8-inch diameter rebar with metal cap stamped 'Boone County Surveyor' on August 30, 2021.

The bolt with hexagonal head which may have been held by previous surveyors to mark the corner was left in place, 2.7 feet north and 17.1 feet west of the corner. No evidence was found to support holding a position for the corner that far west.

This corner was originally established as a wood post in 1822.

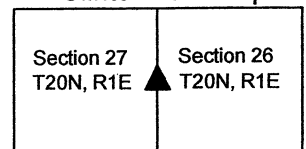


Kenneth E. Hedge
Kenneth E. Hedge, County Surveyor

James S. Swift
James S. Swift, IN LS 20200054

September 8, 2021 PAGE 2 OF 2

Clinton Township



SECTION CORNER RECORD

NE 800-300

BOONE COUNTY SURVEYOR'S OFFICE

State Plane grid coordinates NAD83 (2011):
North: 1788042.22 East: 3140128.97 (U.S. survey feet)

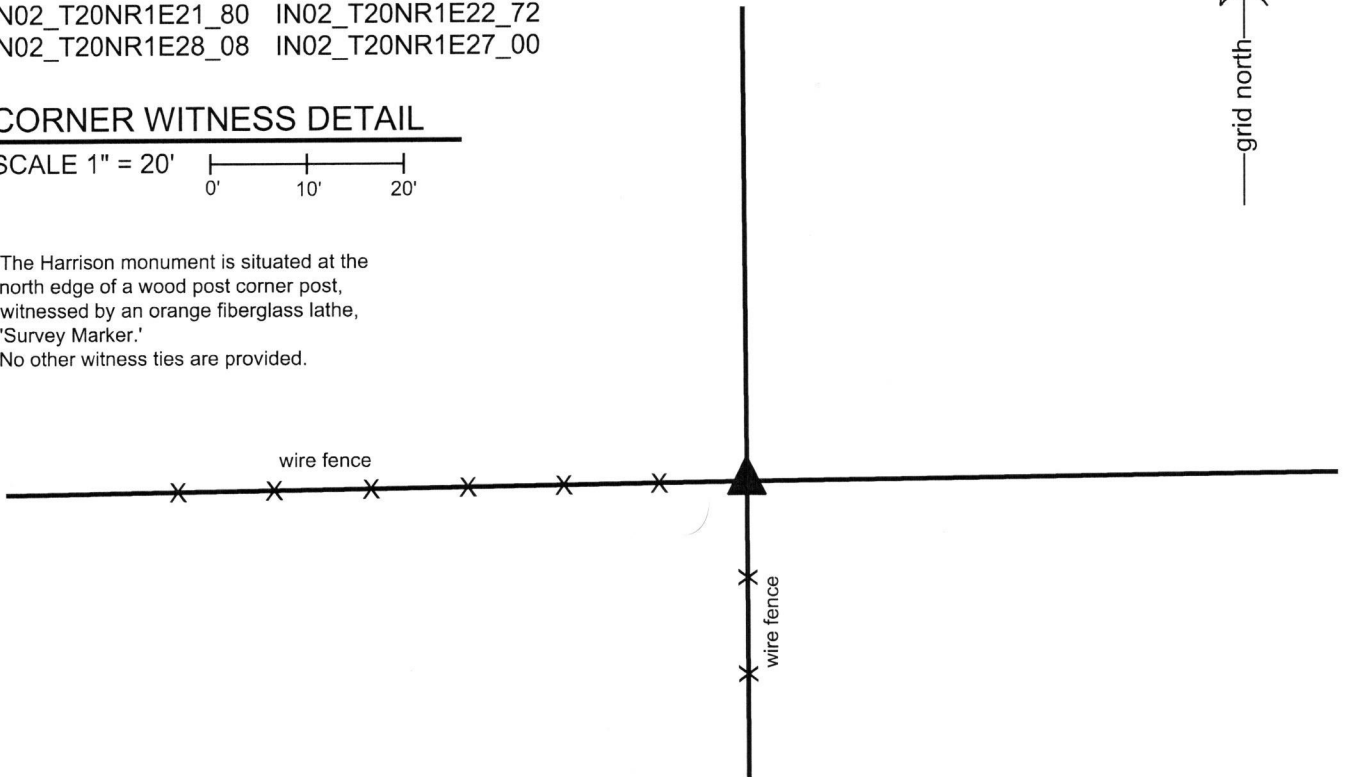
Type of monument: Harrison, 4" disk 'Section Corner'
Depth: Four inches above adjacent ground.

Indiana tie card references:
IN02_T20NR1E21_80 IN02_T20NR1E22_72
IN02_T20NR1E28_08 IN02_T20NR1E27_00

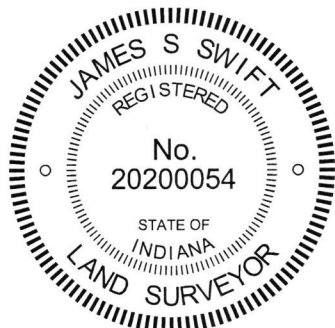
CORNER WITNESS DETAIL

SCALE 1" = 20'
0' 10' 20'

The Harrison monument is situated at the north edge of a wood post corner post, witnessed by an orange fiberglass lathe, 'Survey Marker.'
No other witness ties are provided.



The Harrison monument was set in place of remnants of an ancient wood post found at the north edge of a standing wood post and in-line with fences to the west and south.
No specific descriptions of this corner were found in the old BCS Surveyor's record beyond the original establishment of the corner as a wood post in 1822. No recent BCS tie cards were found referencing the corner.
Excavation was performed at this corner on March 13, 2018. Prior to excavation, the readily visible evidence of the corner was found in the form of a wood post at the intersection of fences to the west and south. Excavation around the post revealed numerous stones found around the post. None of the stones bore the characteristics associated with stones purposely set to mark a corner, based on evidence observed at many other corners throughout the county. Careful inspection of the situation yielded the observation that the standing post is in-line with the fence to the south but slightly south of the longer fence line to the west. The post is clearly offset from the old, established fence line to the west. Excavation at the north edge of the post revealed numerous fragments of wood which appeared to be the remnants of an ancient wood post along with buried scraps of fencing which appeared to represent old fencing to the north and west. The pieces of wood providing evidence of an old corner post were accepted as the best available evidence of the original position of the corner. A Harrison monument was set in place of this evidence, at the north edge of the standing wood post, in line with the fences to the west and south.



Kenneth E. Hedge
Kenneth E. Hedge, County Surveyor

James S. Swift
James S. Swift, IN LS 20200054
March 28, 2018

Clinton Township

Section 21 T20N, R1E	Section 22 T20N, R1E
Section 28 T20N, R1E	Section 27 T20N, R1E

SECTION CORNER RECORD

NE 800-350

BOONE COUNTY SURVEYOR'S OFFICE

State Plane grid coordinates NAD83 (2011):

North: 1788075.86 East: 3142747.91 (U.S. survey feet)

Type of monument: Harrison, 4" disk 'Section Corner'

Depth: One inch above adjacent ground

Indiana tie card references:

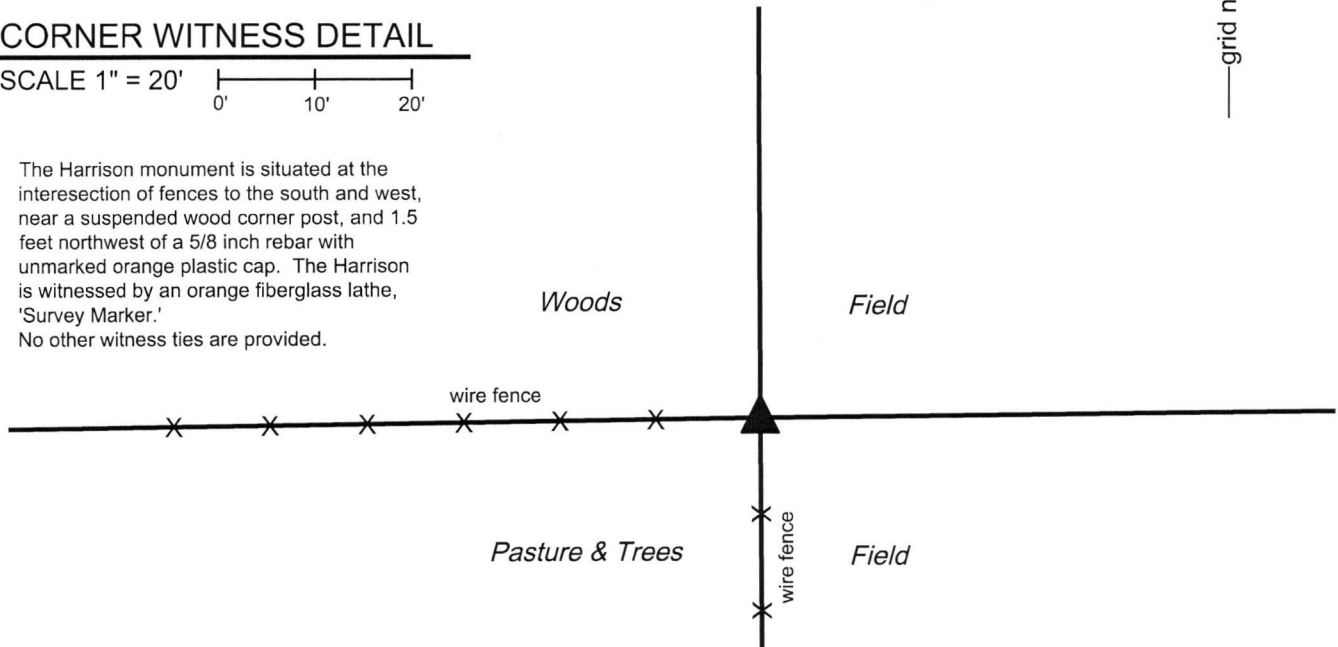
IN02_T20NR1E22_76 IN02_T20NR1E27_04



CORNER WITNESS DETAIL

SCALE 1" = 20'

The Harrison monument is situated at the intersection of fences to the south and west, near a suspended wood corner post, and 1.5 feet northwest of a 5/8 inch rebar with unmarked orange plastic cap. The Harrison is witnessed by an orange fiberglass lathe, 'Survey Marker.'
No other witness ties are provided.

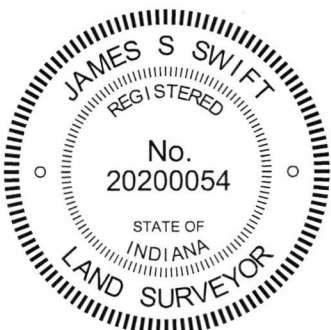


The Harrison monument was set over a stone found.

A BCS record dated May 4-5, 1865 states, with respect to this corner, "Reestablished by measurement. Set a Rock 20.9 by 8 in. marked T." No recent BCS tie cards were found referencing this corner.

Excavation was performed at this corner on March 12, 2018. Prior to excavation, a 5/8 inch rebar with an unmarked orange plastic cap was found near a wood corner post at the intersection of fences to the west and south. The post is old and is no longer attached to the ground, being suspended in the air by the attached fencing. Excavation in the immediate vicinity of the post revealed the stone called for in the 1865 record at 12 inches below grade. The top 8 inches of the stone were exposed. The stone is clearly vertical with a distinct high point. A vague mark on the southeast side appeared to be the "T" mark noted in the 1865 record. Excavation below 20 inches below ground level (12 inches from ground to stone plus the top 8 inches of the stone) was not practical as below this point the excavation hole stood in water. However, the dimensions of the stone could be approximately determined through the use of a metal probe. The probing indicated that the stone is 9 inches NS by 8 inches E-W by 20 inches tall on the NW side and 18 inches tall on the SE side. The stone was accepted as being the same monument described in the 1865 record. It did not appear to have been disturbed and was accepted as marking the corner. The top 8 inches of the stone were encased in concrete and a Harrison monument was set over the top, high point. The origin of the rebar is not known. It was not removed and remains 1.5 feet southeast of the Harrison. The exact original position of the wood corner post was not identified due to the suspended nature of the post, though the stone and Harrison appear to be at the northwest edge of the probable original position of the post.

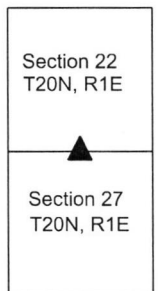
This corner was originally established as a wood post in 1822.



Kenneth E. Hedge, County Surveyor

James S. Swift, IN LS 20200054
March 28, 2018

Clinton Township



SECTION CORNER RECORD

NE 800-400

BOONE COUNTY SURVEYOR'S OFFICE

State Plane grid coordinates NAD83 (CORS96):

North: 1788100.38 East: 3145357.30 (U.S. survey feet)

Type of monument: Harrison, 4" disk 'Section Corner'

Depth: six inches below adjacent gravel road surface

Indiana tie card references:

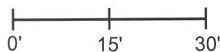
IN02_T20NR1E22_80 IN02_T20NR1E23_76

IN02_T20NR1E27_08 IN02_T20NR1E26_00



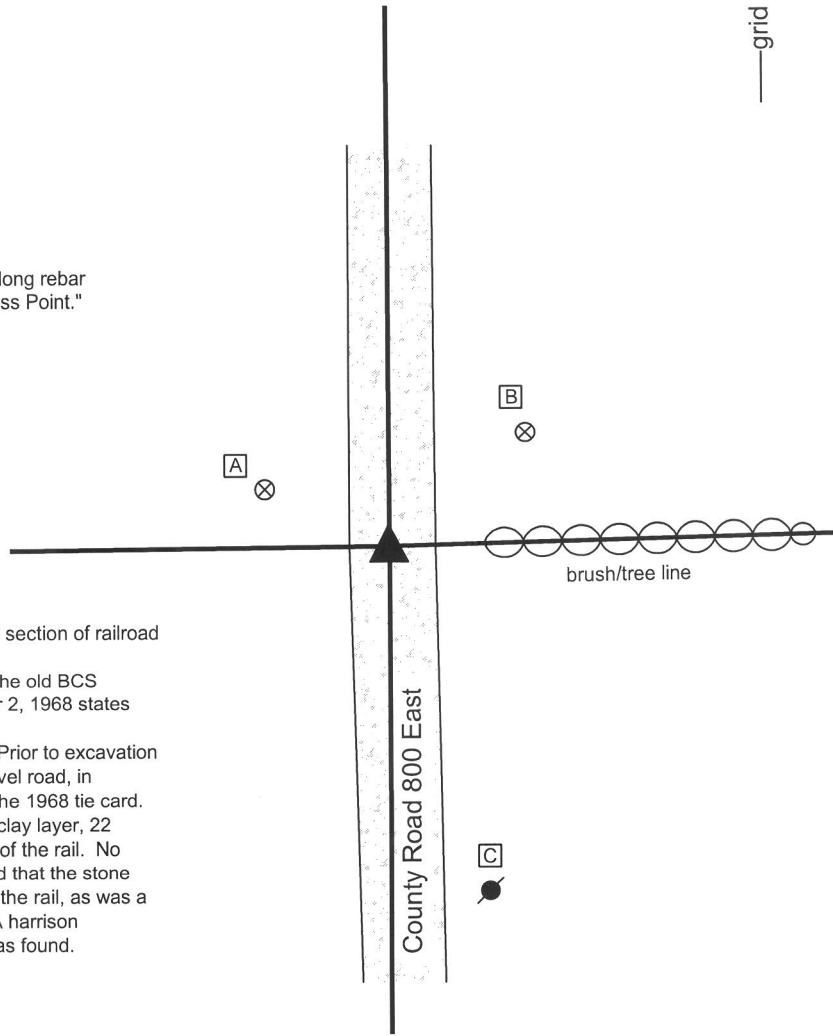
CORNER WITNESS DETAIL

SCALE 1" = 30'



- A - Boone County witness mark, flush, 21.4'
- B - Boone County witness mark, flush, 27.6'
- C - Mag nail set in N. side power pole, 2' a.g., 55.2'

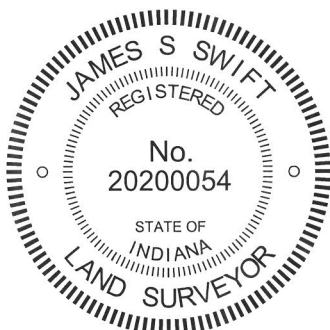
Boone County witness mark is a 3/8" diameter x 2' long rebar bearing a metal cap stamped "Boone County Witness Point."



The harrison monument was set in place of a vertical section of railroad rail found.

No specific descriptions of this corner were found in the old BCS Surveyor's Record. A BCS tie card dated September 2, 1968 states "stone found."

This corner was excavated on November 27, 2013. Prior to excavation a railroad rail was found at 11 inches deep in the gravel road, in agreement with the one remaining distance tie from the 1968 tie card. Excavation revealed a few fragments of wood at the clay layer, 22 inches deep, in the immediate vicinity of the position of the rail. No other evidence of the corner was found. It is believed that the stone was removed when found in 1968 and replaced with the rail, as was a common practice of BCS field crews from that era. A harrison monument was set in the position of the railroad rail as found.



Kenneth E. Hedge
Kenneth E. Hedge, County Surveyor

James S. Swift
James S. Swift, IN LS 20200054
February 5, 2015

Clinton Township

Section 22 T20N, R1E	Section 23 T20N, R1E
Section 27 T20N, R1E	Section 26 T20N, R1E