

SECTION CORNER RECORD

NW 700-150

BOONE COUNTY SURVEYOR'S OFFICE

State Plane grid coordinates NAD83 (CORS96):

North: 1782570.39 East: 3116878.73 (U.S. survey feet)

Type of monument: Harrison, 4" disk 'Section Corner'

Depth: six inches below adjacent gravel road surface

Indiana tie card references:

IN02_T20NR1W26_72 IN02_T20NR1W35_04

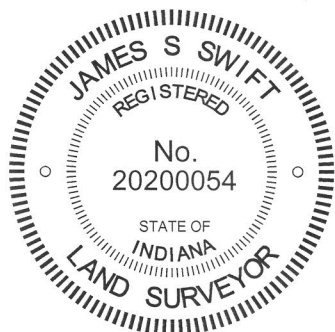
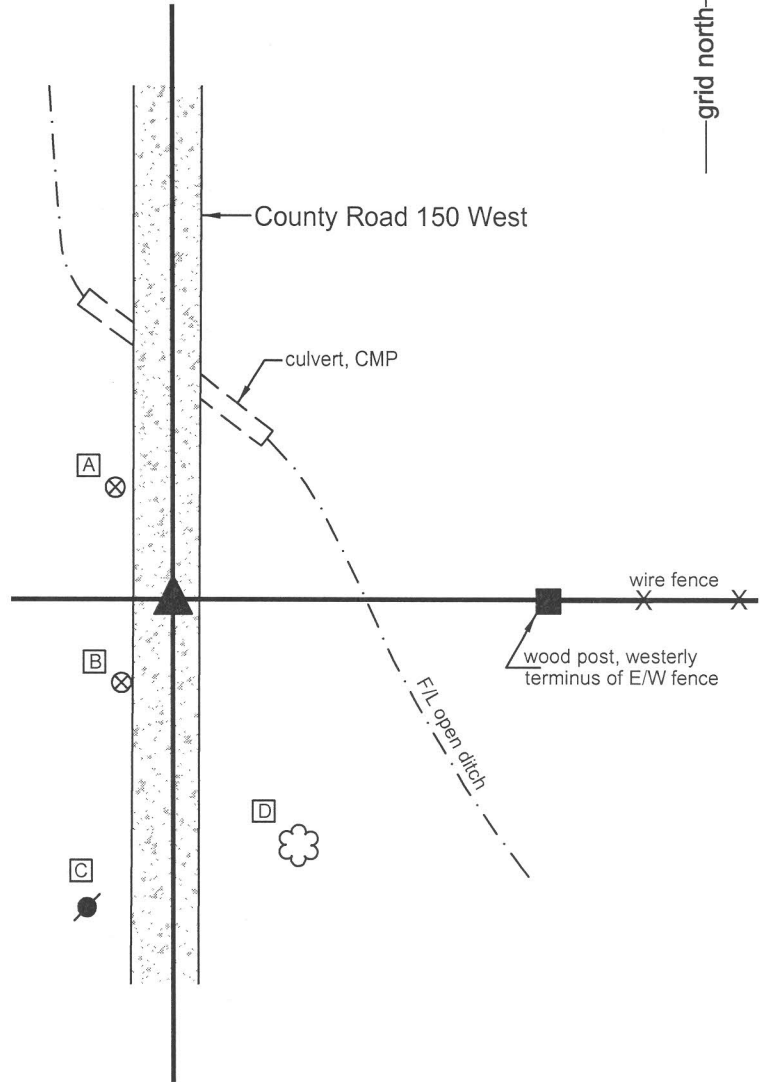
CORNER WITNESS DETAIL

SCALE 1" = 40'



- A - Boone County witness mark, flush, 29.4'
- B - Boone County witness mark, flush, 20.2'
- C - Mag nail set in N. side power pole, 2' a.g., 64.8
- D - N. edge 12 inch diameter walnut tree, 54.3'

The Harrison monument was set over the top, high point of a stone found. A BCS Record of October 15, 1912 states, with respect to this corner, "Reest. by measurement. Drove Stake." No Recent BCS tie cards were found referencing this corner. Excavation was performed at this corner of June 16, 2014. Prior to excavation a 5/8 inch diameter rebar was found at the surface of the road approximately in line with the fence to the east. The source of the rebar is not known. Excavation revealed a stone found at 11 inches deep, north and east of the rebar. With the top 9 inches of the stone exposed, it measured 14 inches N-S and 8 inches E-W. With that amount exposed, the stone remained entirely stable in the clay layer below the road and appeared to be much larger in the vertical dimension. The east and west sides of the stone are vertical while the north and south sides are sloping. The top of the stone protruded 2 to 3 inches out of the clay, into the base of the road bed. No specific marks were observed on the stone. The top center of the stone was also the obvious high point. The stone fit with local evidence of the corner, being within the N-S roadway and in line of the old fence to the east which begins on the east side of an adjacent open ditch. The stone was accepted as the best available evidence of the corner. The top 6 inches of the stone were encased in concrete and a Harrison monument was broken off at 6 inches tall and set over the top, high point of the stone. The rebar, removed during excavation, had been 0.75 foot south and 1.8 feet west of the top, high point of the stone. This corner was originally established as a wood post in 1829.



Kenneth E. Hedge
Kenneth E. Hedge, County Surveyor

James S. Swift
James S. Swift, IN LS 20200054

March 27, 2015

Washington Township

Section 26
T20N, R1W

Section 35
T20N, R1W

PHOTOGRAPHIC DOCUMENTATION

Date of photography: June 16, 2014

The stone as first exposed.



The stone more fully exposed.



View from the west, looking across the top of the stone and east along the fence to the east. Note the distinct top, high point of the stone.



For details and documentation,
refer to related sheet
"Section Corner Record."

SECTION CORNER RECORD

NW 700-200

BOONE COUNTY SURVEYOR'S OFFICE

State Plane grid coordinates NAD83 (2011):
North: 1782550.76 East: 3114232.84 (U.S. survey feet)

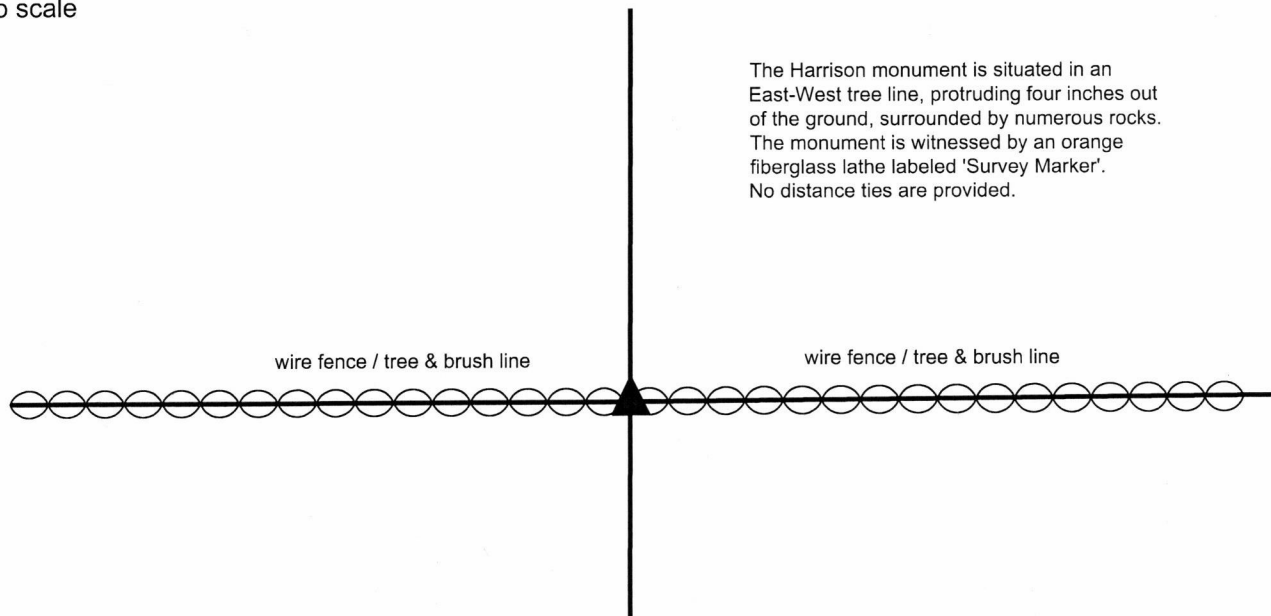
Type of monument: Harrison, 4" disk 'Section Corner'
Depth: Four inches above adjacent ground

Indiana tie card references:
IN02_T20NR1W27_80 IN02_T20NR1W26_72
IN02_T20NR1W34_08 IN02_T20NR1W35_00



CORNER WITNESS DETAIL

No scale

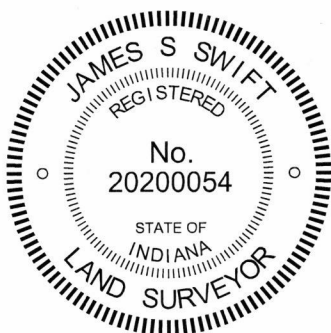


The Harrison monument is situated in an East-West tree line, protruding four inches out of the ground, surrounded by numerous rocks. The monument is witnessed by an orange fiberglass lathe labeled 'Survey Marker'. No distance ties are provided.


wire fence / tree & brush line

wire fence / tree & brush line

The Harrison monument was set over the base of a wood corner post. A BCS record of October 21, 1871 states, with respect to this corner, "Corner of section 26, 27, 34 & 35 reestablished from trees, boxed Ash, and found mark. Hickory out. Set rock 18x15x10 +." No recent BCS tie cards were found referencing this corner. Excavation was performed at this corner on November 1, 2017. Prior to excavation an ancient wood post was found with fencing to the east and west. The post is the most substantial post found in the east-west fence line in this vicinity and clearly appears to represent a corner post. The post is known to have been held as marking the corner for previous surveys in the area and the position of the post works well with the relative positions of proximate corners, particularly with the strong evidence of the corners 1/2 and 1/4 mile north, respectively. (See documentation for corner NW 750-200.) Many rocks were found around and in the immediate vicinity of the post, including an extremely large piece of granite immediately west of the post. Excavation of the various rocks and inspection of the dimensions thereof did not reveal the stone described in the 1871 record. The huge piece of granite to the west of the post was not displaced, though excavation and probing under it did not yield the discovery of further rocks. The post, being an ancient cedar headpost 8 inches by 8 inches, was accepted as the best available evidence of the corner and was held as marking the corner. The top of the post was broken off from the subterranean base of the post at approximately 4 inches below ground level. The Harrison monument was set directly over the base of the post, anchored in part to the aforementioned adjacent large piece of granite and also anchored to the top 10 inches of the remaining portion of the base of the post. This corner was originally established as a wood post in 1829.




Kenneth E. Hedge, County Surveyor


James S. Swift, IN LS 20200054
December 13, 2017

Washington Township

Section 27 T20N, R1W	Section 26 T20N, R1W
Section 34 T20N, R1W	Section 35 T20N, R1W

SECTION CORNER RECORD

NW 700-200

BOONE COUNTY SURVEYOR'S OFFICE

State Plane grid coordinates NAD83 (2011):

North: 1782550.76 East: 3114232.84 (U.S. survey feet)

Type of monument: 5/8" diameter rebar with aluminum cap stamped 'Boone County Surveyor'

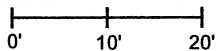
Depth: Three inches below adjacent ground

Indiana tie card references:

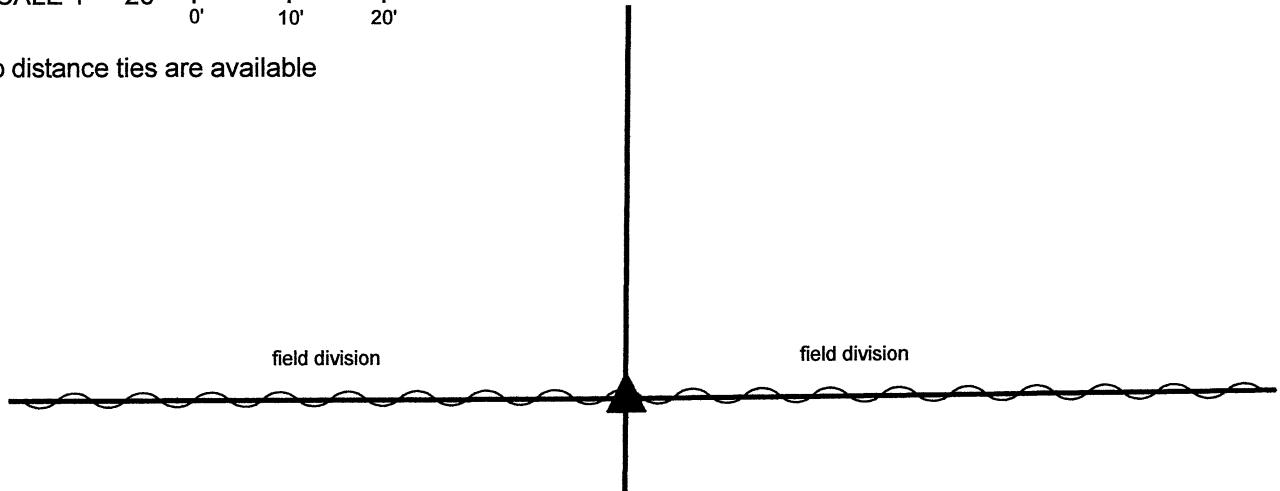
IN02_T20NR1W27_80 IN02_T20NR1W26_72

IN02_T20NR1W34_08 IN02_T20NR1W35_00

CORNER WITNESS DETAIL

SCALE 1" = 20' 

No distance ties are available



This corner was monumented in 2017. In the fall of 2020, the standing east-west fence was removed by the adjoining land owners and the Harrison monument which had been set over the base of a wood corner was destroyed when the adjacent rocks were removed but the base of the wood post was left largely intact. On March 25, 2021, a rebar was driven into the remnants of the base of the post at the same position previously marked by the Harrison monument.

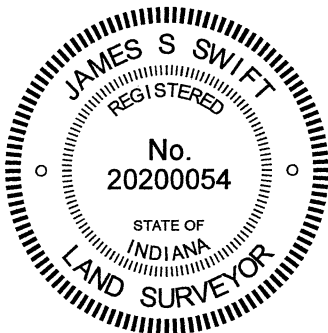
The report of findings and monumentation from 2017 is as follows:

The Harrison monument was set over the base of a wood corner post.

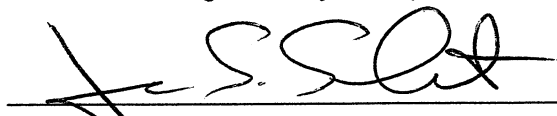
A BCS record of October 21, 1871 states, with respect to this corner, "Corner of section 26, 27, 34 & 35 reestablished from trees, boxed Ash, and found mark. Hickory out. Set rock 18x15x10 +." No recent BCS tie cards were found referencing this corner.

Excavation was performed at this corner on November 1, 2017. Prior to excavation an ancient wood post was found with fencing to the east and west. The post is the most substantial post found in the east-west fence line in this vicinity and clearly appears to represent a corner post. The post is known to have been held as marking the corner for previous surveys in the area and the position of the post works well with the relative positions of proximate corners, particularly with the strong evidence of the corners 1/2 and 1/4 mile north, respectively. (See documentation for corner NW 750-200.) Many rocks were found around and in the immediate vicinity of the post, including an extremely large piece of granite immediately west of the post. Excavation of the various rocks and inspection of the dimensions thereof did not reveal the stone described in the 1871 record. The huge piece of granite to the west of the post was not displaced, though excavation and probing under it did not yield the discovery of further rocks. The post, being an ancient cedar headpost 8 inches by 8 inches, was accepted as the best available evidence of the corner and was held as marking the corner. The top of the post was broken off from the subterranean base of the post at approximately 4 inches below ground level. The Harrison monument was set directly over the base of the post, anchored in part to the aforementioned adjacent large piece of granite and also anchored to the top 10 inches of the remaining portion of the base of the post.

This corner was originally established as a wood post in 1829.




 Kenneth E. Hedge, County Surveyor


 James S. Swift, IN LS 20200054

December 13, 2017 - revised June 1, 2021

Washington Township

Section 27 T20N, R1W	Section 26 T20N, R1W
Section 34 T20N, R1W	Section 35 T20N, R1W

SECTION CORNER RECORD

BOONE COUNTY SURVEYOR'S OFFICE

NW 700-200RSV
 Angle Point on the
 Thorntown Reserve Line

State Plane grid coordinates NAD83 (2011):
 North: 1782556.48 East: 3115046.42 (U.S. survey feet)

Type of monument: 5/8" diameter rebar with
 aluminum cap stamped 'Boone County Surveyor'
 Depth: Fourteen inches below adjacent ground

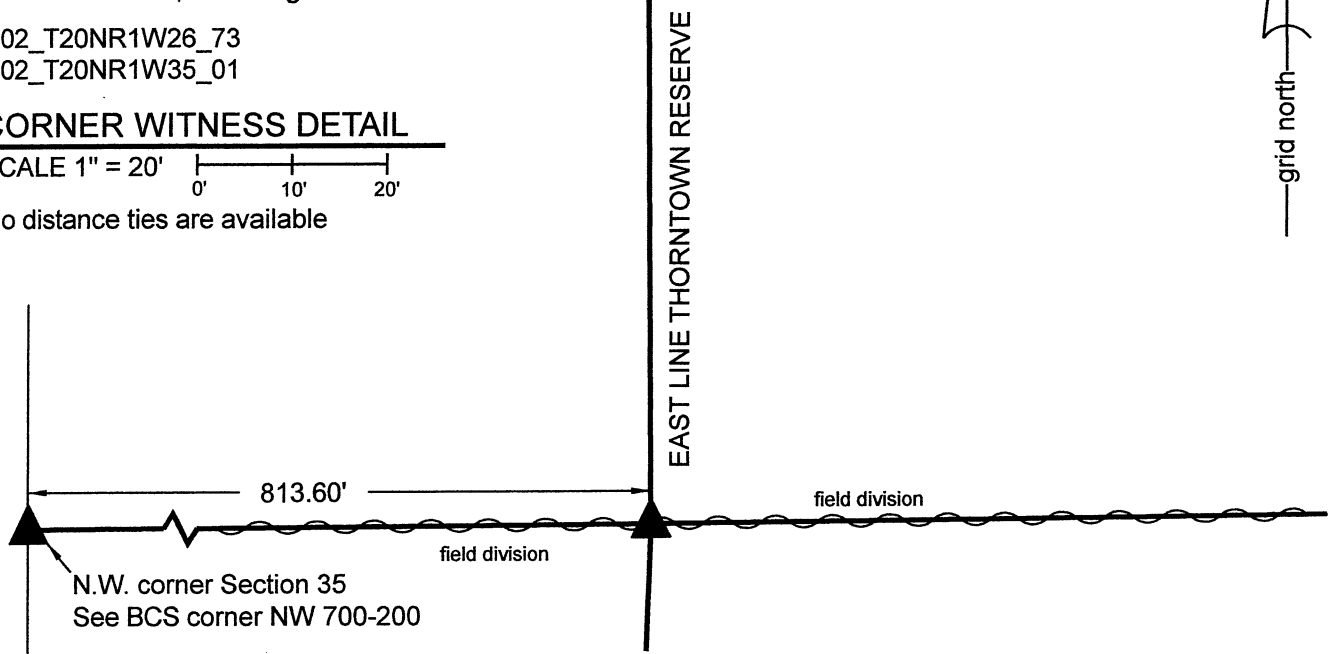
No Indiana tie card references are available to precisely
 define this corner, nearest grid references are:

IN02_T20NR1W26_73
 IN02_T20NR1W35_01

CORNER WITNESS DETAIL

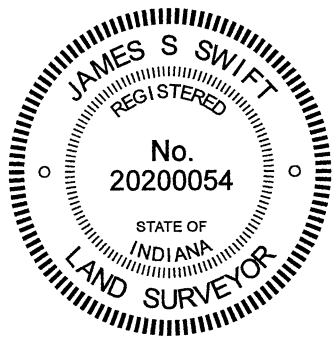
SCALE 1" = 20'

No distance ties are available



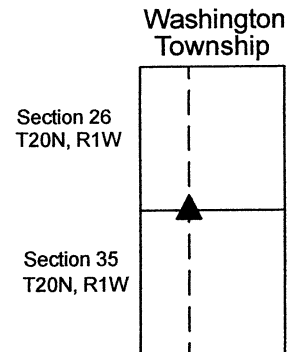
The Harrison monument was set in place of a stone found.

This corner falls along the east line of the Thorntown Reserve. The corner was originally established in 1822 as that part of Township 20 North, Range 1 West which lies east of the reserve was being subdivided. The subsequent federal notes from 1829, when that part of T20N, R1W which lies within the reserve area was being subdivided, show that the reserve corner was located at 12.34 chains (814.44 feet) east of the northwest corner of Section 35 (BCS corner NW 700-200). The legal description of the adjoining land to the south, described in Instrument 9703538 in the Office of the Boone County Recorder, calls for an iron bar at the corner, 813.54 feet east of the N.W. corner of Section 35. A BCS record of September 8, 1904 states, with respect to the reserve corner, "Found rock et by Huckstep and by measurement found it to be set in correction position." This record shows the corner as being at 12.33 chains (813.78 feet) east of the N.W. corner of Section 35. The reference to the rock set by Huckstep was not found in the BCS Surveyor's Record. It is known that a standing east-west fence existed at this corner in 2017, though specific evidence of the corner was not located at that time due to a substantial pile of brush and wood which had been bulldozed into the vicinity of the corner. The fence and brush were removed by the adjoining land owners in the fall of 2020. The corner was revisited in the Spring of 2021. A position for the corner was computed with respect to dimensions recited in said record 9703538, which substantially agreed with the distances called in the original federal field notes on 1829 and also with the 1904 BCS record. Excavation revealed a stone found at 6 inches below grade. The stone measured 14 inches tall by 6 inches E-W by 9 inches N-S, was vertical as found and appeared to have been purposely set to mark the corner. The stone was found at 813.60 feet east of the N.W. corner of Section 35 and was within 0.5 foot of the position of the corner computed with respect to said record 9703538. The stone was accepted as the best available evidence of the corner and was held as marking the corner. The stone was removed and replaced with a 24-inch length of 5/8-inch rebar with a metal cap stamped Boone County Surveyor set at 14 inches below grade. It is noted that this corner falls in-line with other evidence of the Thorntown Reserve to the north, but that the reserve line appear to bend at this corner due to issues with the alignment of the reserve line as it crosses the township line between T19N, R1W and T20N, R1W.



Kenneth E. Hedge
 Kenneth E. Hedge, County Surveyor

James S. Swift
 James S. Swift, IN LS 20200054
 June 1, 2021



SECTION CORNER RECORD

NW 750-200

BOONE COUNTY SURVEYOR'S OFFICE

State Plane grid coordinates NAD83 (2011):

North: 1785169.53 East: 3114242.98 (U.S. survey feet)

Type of monument: + mark on top of stone

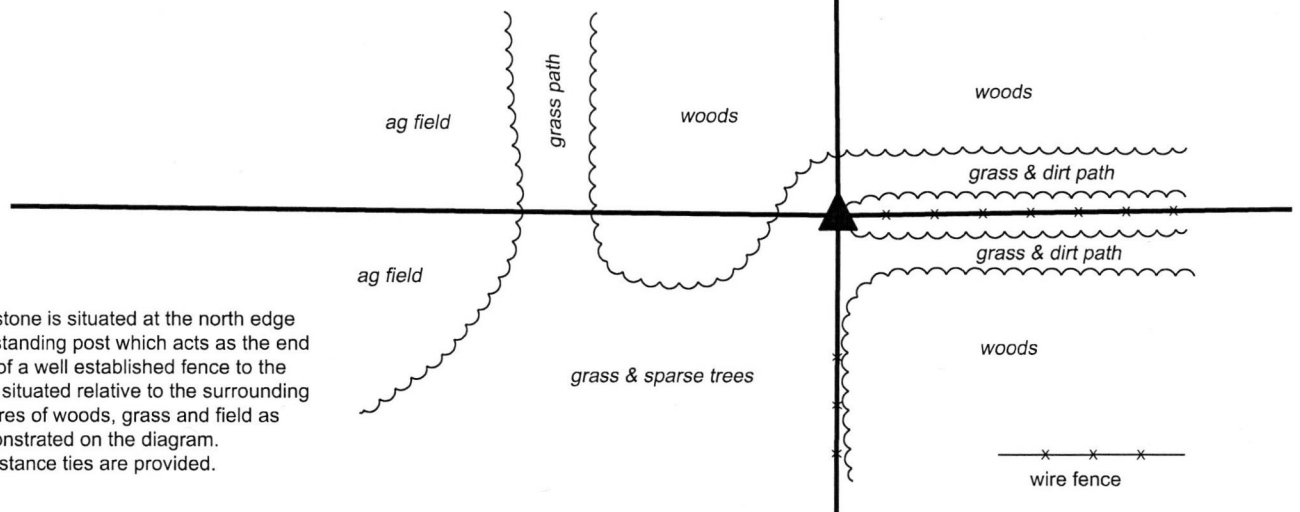
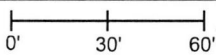
Depth: flush

Indiana tie card references:

IN02_T20NR1W26_36 IN02_T20NR1W27_44

CORNER WITNESS DETAIL

SCALE 1" = 60'

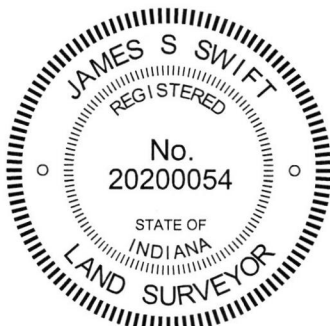


The stone is situated at the north edge of a standing post which acts as the end post of a well established fence to the east, situated relative to the surrounding features of woods, grass and field as demonstrated on the diagram. No distance ties are provided.


The stone was found in place.

A BCS record of October 21, 1871 states, with respect to this corner, "Reest'd both trees (green). Set Rock 16x13x13 marked +." No recent BCS tie cards were found referencing this corner.

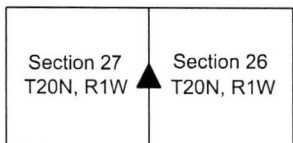
The stone was exposed on December 1, 2017. It is situated at the north edge of a wood post with fencing to the east and in line with fencing to the south which begins approximately 30 feet south of the corner. The top of the stone was found near the surface of the ground. Much of the stone was exposed and it was found to measure 13 inches N-S by 13 inches E-W by 16 inches tall. The height of the stone was measured on the west side. A clearly visible + mark was found on the top, center of the stone. The stone, as found, was generally vertical, though it appeared in the field that the stone may be leaning slightly SSE. The position of the stone works well with evidence of the section line to the south, including the relative positions of the corners 1/4 and 1/2 mile, respectively, to the south. The generally accepted position of the corner at the quarter mile to the south is marked by a nail in the center of an east-west roadway and in line with fencing to the north. However, it is noted that the stone is approximately 18 feet east and 37 feet south of a theoretical midpoint of a line connecting the section corners to the north and south. No explanation is offered for this fact. Given that the 1871 record indicates that the position of the corner was established from the original bearing trees and given the harmony of the position of the stone with the evidence to the south, minimal uncertainty is associated with acceptance of the stone as marking the corner. The stone was left in place. The + mark etched into the center of the top of the stone is clearly visible, with each arm of the + being approximately 2 inches long. The mark is held as the specific position of the corner. This corner was originally established as a wood post in 1829.




Kenneth E. Hedge, County Surveyor


James S. Swift, IN-LS 20200054
December 13, 2017

Washington Township



SECTION CORNER RECORD

NW 800-100

BOONE COUNTY SURVEYOR'S OFFICE

State Plane grid coordinates NAD83 (CORS96):

North: 1787910.37 East: 3119517.40 (U.S. survey feet)

Type of monument: Harrison, 4" disk 'Section Corner'

Depth: One inch below adjacent road surface

Indiana tie card references:

IN02_T20NR1W23_80 IN02_T20NR1W24_72

IN02_T20NR1W26_08 IN02_T20NR1W25_00

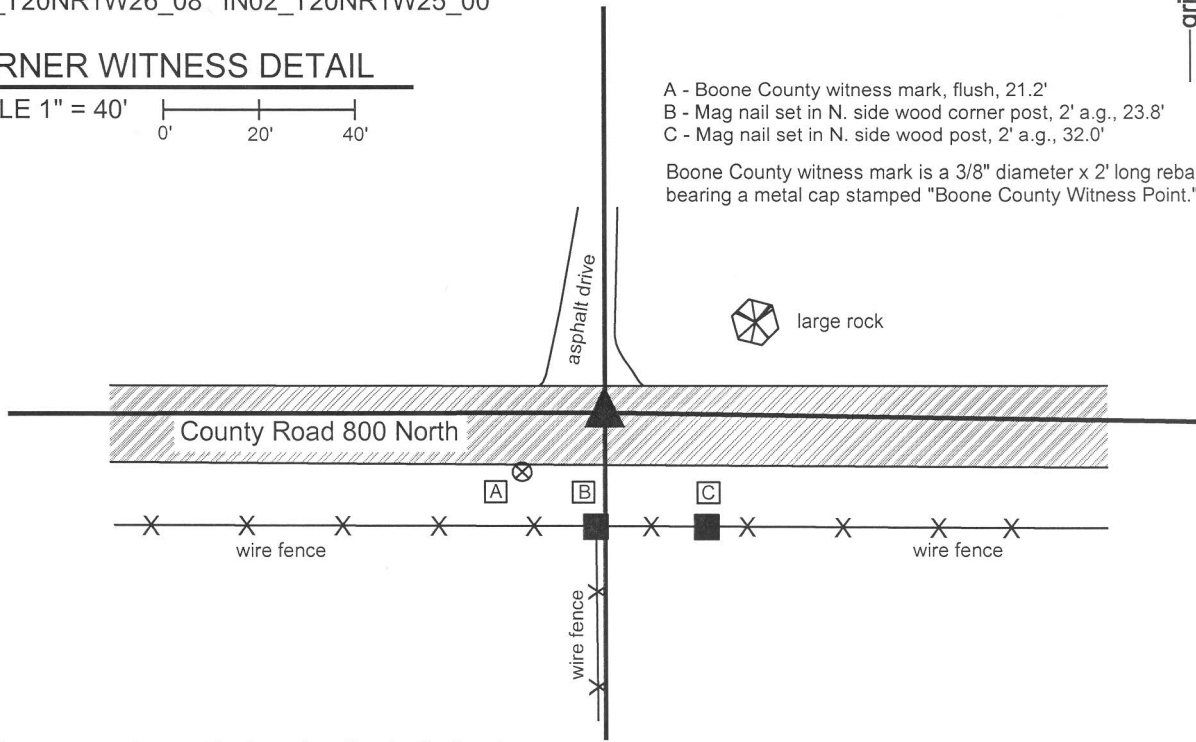


CORNER WITNESS DETAIL

SCALE 1" = 40'
0' 20' 40'

- A - Boone County witness mark, flush, 21.2'
- B - Mag nail set in N. side wood corner post, 2' a.g., 23.8'
- C - Mag nail set in N. side wood post, 2' a.g., 32.0'

Boone County witness mark is a 3/8" diameter x 2' long rebar bearing a metal cap stamped "Boone County Witness Point."

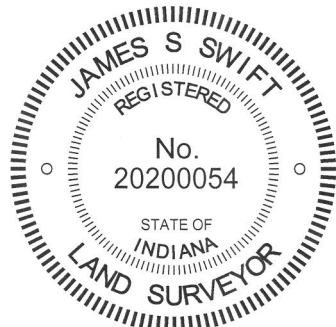


The Harrison monument was set in place of a railroad spike found.

A BCS record of August 25th 1859 states, with respect to this corner, "Rock from which another Rock 48 [links], N 28 1/2 E, 60 [links]." A BCS record of August 21, 1893 states "witness rock here." No recent BCS tie cards were found referencing this corner.

Excavation was performed at this corner on June 16, 2014. Prior to excavation, a railroad spike was found at the surface of the road, slightly north of the physical center of the road. A large rock was nearby, at approximately 60 links distance. The azimuth from the railroad spike to the rock was more like 58 degrees, than 28 degrees. This rock did not bear the characteristics of a "witness stone." Excavation of an area extending 2 feet north, 2 feet east, 4.5 feet south and 4.5 feet west of the railroad spike yielded no further evidence of the corner. Excavation was performed in an area sufficiently large to include the center of the road at the approximate intersection of the fence to the south and the center of the road at 60 links distance from the aforementioned large rock. The bottom of the road bed is at approximately 1 foot, under which a grey clay layer exists to about 16 inches. From 16 inches and deeper, a brown clay exists. Excavation was performed to at least 20 inches deep. The source of the railroad spike is not known and no explanation is offered as to why the stone which was known to exist in 1859 and 1893 was not found. The railroad spike fits with with adjacent section corners, is called for as marking the corner for some adjoining properties and is believed to represent the position of the corner from which other adjacent properties were described. It is noted that a position being S28°W, 60 links from the aforementioned large rock would fall well south of the roadway and would not fit with any of the local evidence of the corner. As no contrary evidence was found, the railroad spike was held as marking the corner. The railroad spike was removed during excavation and replaced with a Harrison monument set in the same position.

This corner was originally established as a wood post in 1822.



Kenneth E. Hedge
Kenneth E. Hedge, County Surveyor

James S. Swift
James S. Swift, IN LS 20200054
March 27, 2015

Washington Township

Section 23 T20N, R1W	Section 24 T20N, R1W
Section 26 T20N, R1W	Section 25 T20N, R1W

SECTION CORNER RECORD

NW 800-150

BOONE COUNTY SURVEYOR'S OFFICE

State Plane grid coordinates NAD83 (CORS96):

North: 1787907.36 East: 3116882.19 (U.S. survey feet)

Type of monument: Harrison, 4" disk 'Section Corner'

Depth: One inch below adjacent road surface

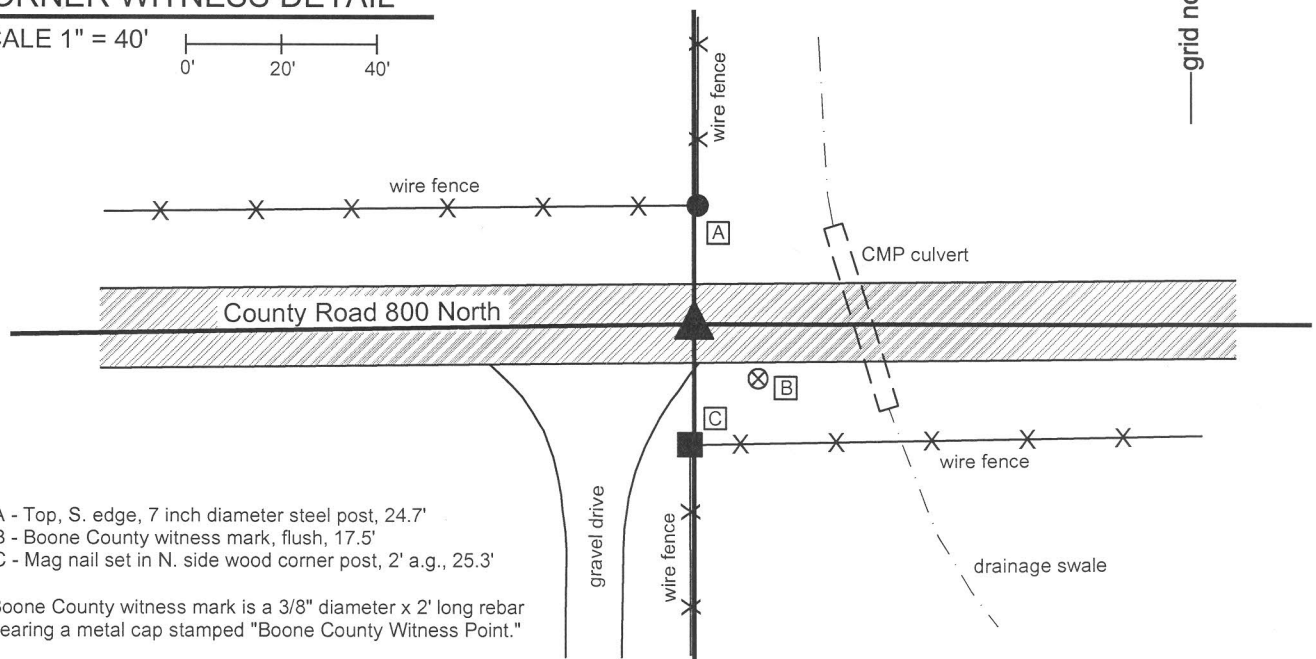
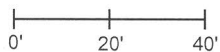
Indiana tie card references:

IN02_T20NR1W23_76 IN02_T20NR1W26_04



CORNER WITNESS DETAIL

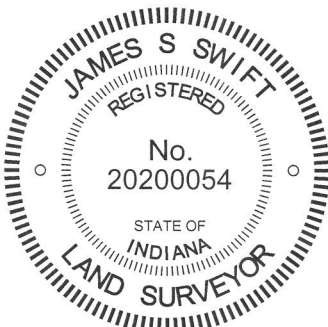
SCALE 1" = 40'



- A - Top, S. edge, 7 inch diameter steel post, 24.7'
- B - Boone County witness mark, flush, 17.5'
- C - Mag nail set in N. side wood corner post, 2' a.g., 25.3'

Boone County witness mark is a 3/8" diameter x 2' long rebar bearing a metal cap stamped "Boone County Witness Point."

The Harrison monument was set in place of a railroad spike which was set in place of a Mag nail found. A BCS record dated November 28, 1885 states, with respect to this corner, "Found from Oak wit (gov) and rock already there. Set 15,18.12 no mark." No recent BCS tie cards were found referencing this corner. Significant excavation was not performed at this corner due to obvious presence of significant amounts of fill material associated with the culvert for a drainage ditch crossing the road immediately to the east of the corner. Minor excavation was performed on June 16, 2014. At that time, a Mag nail found at the surface of the road was removed and the area under the nail was excavated. No metal monument or any other evidence of the corner was found below the Mag nail. It was observed that the Mag nail was in the center of the east-west roadway, slightly east of the fence to the south and slightly west of the fence to the north. The source of the Mag nail is not known. The nail was temporarily replaced with a railroad spike in the same position, pending review of the relative position of the found Mag nail and monumentation marking adjoining properties. Further research and field work yielded the observation that position of the Mag nail fit very well with the descriptions and monumentation to the west in both sections 23 and 26. Having confirmed this position for the corner and having found no contrary evidence, the position of the Mag nail as originally found was held as marking the corner. On October 21, 2014 the railroad spike which had been temporarily marking the position of the corner was removed and replaced with a Harrison monument. This corner was originally established as a wood post in 1822.



Kenneth E. Hedge
Kenneth E. Hedge, County Surveyor

James S. Swift
James S. Swift, IN LS 20200054

March 27, 2015

Washington Township

Section 23
T20N, R1E

Section 26
T20N, R1E

SECTION CORNER RECORD

NW 800-200

BOONE COUNTY SURVEYOR'S OFFICE

State Plane grid coordinates NAD83 (CORS96):

North: 1787863.62 East: 3114216.80 (U.S. survey feet)

Type of monument: Harrison, 4" disk 'Section Corner'

Depth: One inch below adjacent road surface

Indiana tie card references:

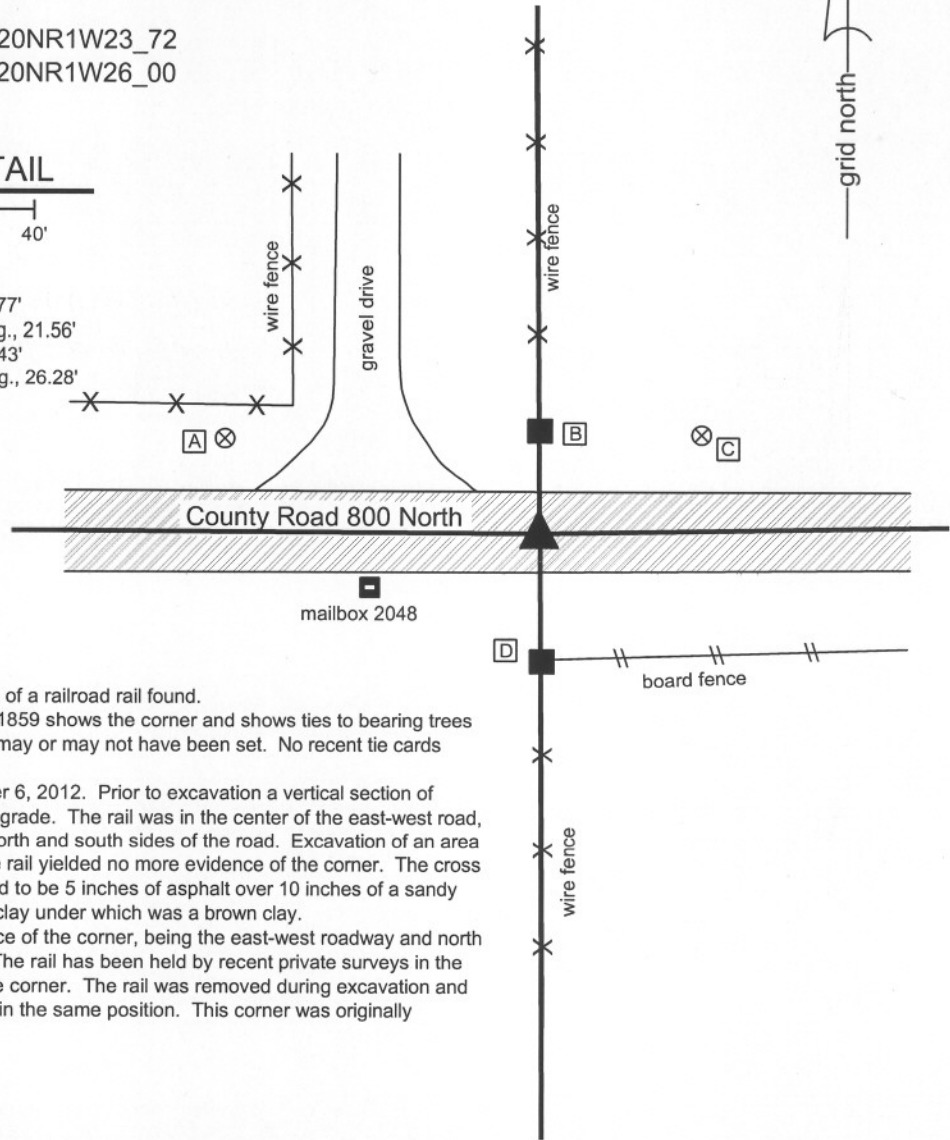
IN02_T20NR1W22_80 IN02_T20NR1W23_72

IN02_T20NR1W27_08 IN02_T20NR1W26_00

CORNER WITNESS DETAIL

SCALE 1" = 40'

- A - Boone County witness mark, flush, 68.77'
- B - Mag nail set in E. side wood post, 1' a.g., 21.56'
- C - Boone County witness mark, flush, 39.43'
- D - Mag nail set in N. side wood post, 1' a.g., 26.28'



The harrison monument was set in place of a railroad rail found.

A record of A BCS record of August 25, 1859 shows the corner and shows ties to bearing trees but does not state what monumentation may or may not have been set. No recent tie cards have been found referencing this corner.

This corner was excavated on September 6, 2012. Prior to excavation a vertical section of railroad rail was found at 4 inches below grade. The rail was in the center of the east-west road, opposite the wood corner posts on the north and south sides of the road. Excavation of an area 5 feet N-S by 5 feet E-W centered on the rail yielded no more evidence of the corner. The cross section of the road at this point was found to be 5 inches of asphalt over 10 inches of a sandy gravel material over 10 inches of a blue clay under which was a brown clay.

The railroad rail fits with the local evidence of the corner, being the east-west roadway and north south fences on each side of the road. The rail has been held by recent private surveys in the vicinity. The rail was held as marking the corner. The rail was removed during excavation and was replaced with a harrison monument in the same position. This corner was originally established as a wood post in 1829.



Kenneth E. Hedge
 Kenneth E. Hedge, County Surveyor

James S. Swift
 James S. Swift, IN LS 20200054
 November 5, 2012

Washington Township

Section 22 T20N, R1W	Section 23 T20N, R1W
Section 27 T20N, R1W	Section 26 T20N, R1W