

SECTION CORNER RECORD

BOONE COUNTY SURVEYOR'S OFFICE

NW 100-750

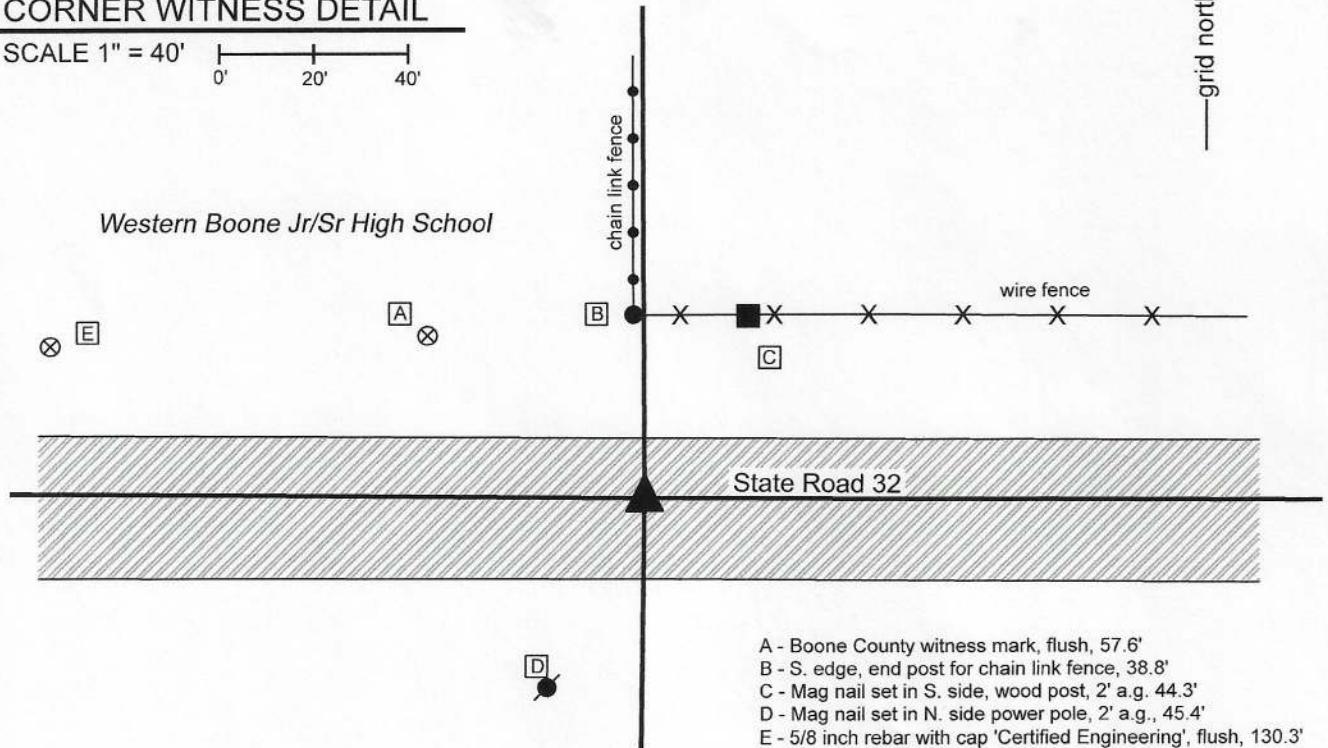
State Plane grid coordinates NAD83 (2011):
 North: 1750821.89 East: 3085168.16 (U.S. survey feet)

Type of monument: Plug in monument box, INDOT Type B
 Depth: Flush with adjacent road surface

Indiana tie card references:
 IN02_T19NR2W26_76 IN02_T19NR2W35_04

CORNER WITNESS DETAIL

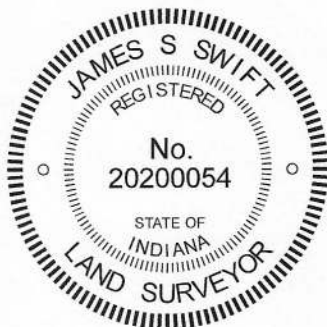
SCALE 1" = 40'



- A - Boone County witness mark, flush, 57.6'
- B - S. edge, end post for chain link fence, 38.8'
- C - Mag nail set in S. side, wood post, 2' a.g., 44.3'
- D - Mag nail set in N. side power pole, 2' a.g., 45.4'
- E - 5/8 inch rebar with cap 'Certified Engineering', flush, 130.3'

The Type B monument was found in place and held as marking the corner. A BCS record dated August 28-29 1881 shows the corner as being established and monumented by a rock 15x6x10 inches marked +. As this corner falls in a state road, no large scale excavation was performed. A tie card provided by INDOT, dated November 1998, shows the corner as a railroad spike flush. A Survey Monument Replacement Surveyor's Report recorded as Instrument 200700005107 in the Office of the Boone County Recorder indicates that between May 2006 and May 2007, a previously existing monument (type not identified) was replaced with a Type B monument, believed to be the same monument as is present at this time. The report notes that the new monument was found to be 0.07 foot northeast of the previous monument. The Type B monument is held as making the corner in the position found.

This corner was originally established as a wood post in 1822.



Kenneth E. Hedge
 Kenneth E. Hedge, County Surveyor

James S. Swift
 James S. Swift, IN LS 20200054
 May 11, 2020

Jefferson Township

Section 26
 T19N, R2W

Section 35
 T19N, R2W

SECTION CORNER RECORD

BOONE COUNTY SURVEYOR'S OFFICE

NW 100-800

State Plane grid coordinates NAD83 (2011):
 North: 1750841.63 East: 3082517.70 (U.S. survey feet)

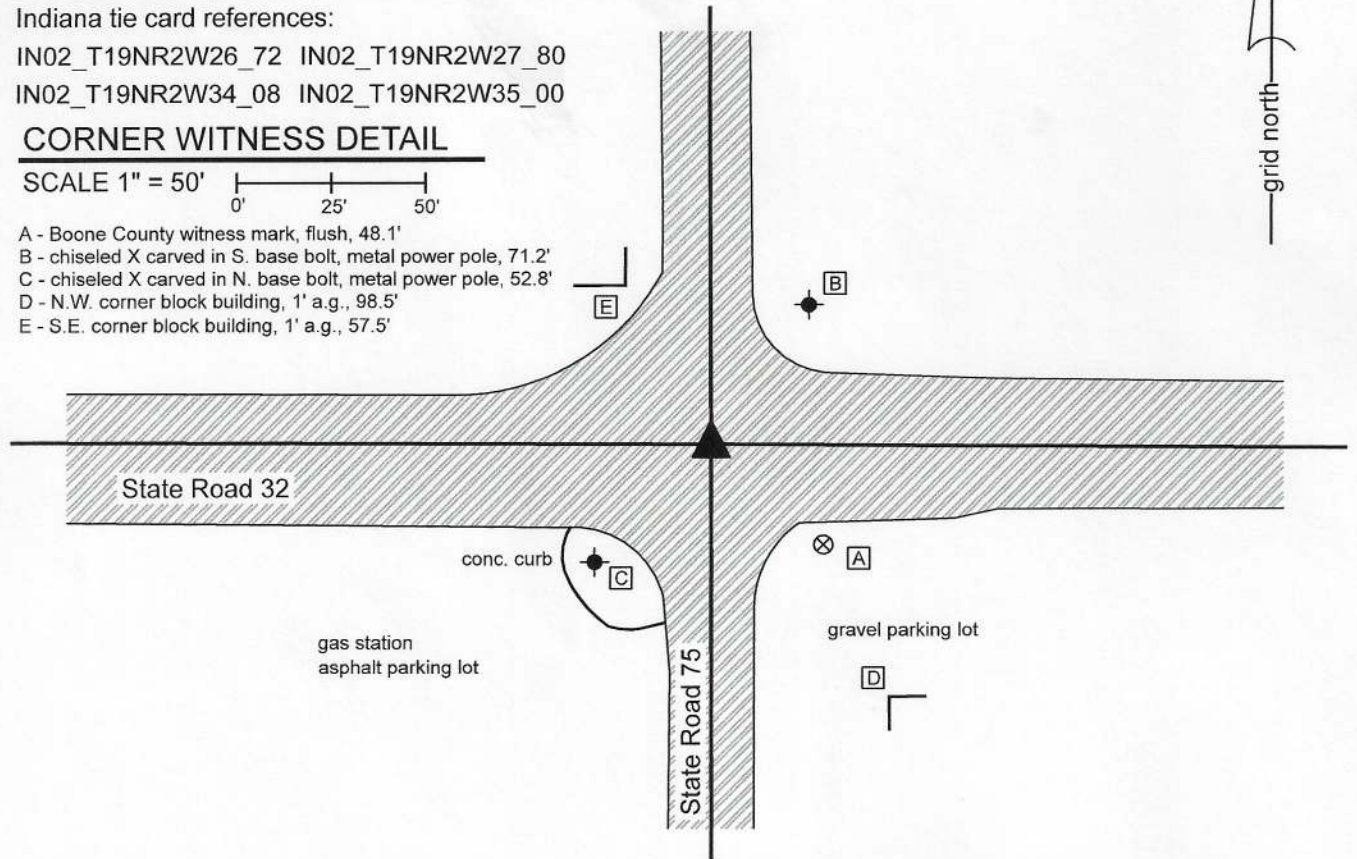
Type of monument: plug in monument box, INDOT Type B
 Depth: Flush with adjacent road surface

Indiana tie card references:
 IN02_T19NR2W26_72 IN02_T19NR2W27_80
 IN02_T19NR2W34_08 IN02_T19NR2W35_00

CORNER WITNESS DETAIL

SCALE 1" = 50'

- A - Boone County witness mark, flush, 48.1'
- B - chiseled X carved in S. base bolt, metal power pole, 71.2'
- C - chiseled X carved in N. base bolt, metal power pole, 52.8'
- D - N.W. corner block building, 1' a.g., 98.5'
- E - S.E. corner block building, 1' a.g., 57.5'



The Type B monument was found in place and held as marking the corner. A BCS record of September 12, 1912 states, with respect to this corner, "Stone in crossing long recognized as corner." A BCS tie card dated June 30, 1982 shows the corner as a bolt in the center of the intersection of the two state roads. A BCS tie card dated August 4, 1995 shows the corner with ties but does not reference a specific monument. A tie card which is believed to have been supplied by INDOT, dated November 10, 1998, shows the corner as an Iron Rod in Pod. BCS tie cards of July 30, 1996 and December, 2003 show the corner as a Type C monument. A Survey Monument Replacement Surveyor's Report recorded as Instrument 200700005107 in the Office of the Boone County Recorder states that a new Type B monument was set following resurfacing operations, between May 2006 and May, 2007. The report indicates that the new monument was set 0.07 foot northeast of the previous monument. The ties that remain from the various tie cards, including ties to the corners of the two block buildings shown on this drawing, match the distances measured in the field within 0.1 foot. The Type B monument is held as the corner in the current position, with uncertainties of approximately 0.1 foot in all directions. This corner was originally established as a wood post in 1822.



Kenneth E. Hedge
 Kenneth E. Hedge, County Surveyor

James S. Swift
 James S. Swift, IN LS 20200054
 May 11, 2020

Jefferson Township

Section 27 T19N, R2W	Section 26 T19N, R2W
Section 34 T19N, R2W	Section 35 T19N, R2W

SECTION CORNER RECORD

BOONE COUNTY SURVEYOR'S OFFICE

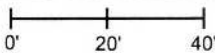
NW 150-700

State Plane grid coordinates NAD83 (2011):
 North: 1753455.20 East: 3087809.63 (U.S. survey feet)

Type of monument: Harrison, 4" disk 'Section Corner'
 Depth: One inch below adjacent road surface

Indiana tie card references:
 IN02_T19NR2W26_44 IN02_T19NR2W25_36

CORNER WITNESS DETAIL

SCALE 1" = 40' 

- A - Boone County witness mark, flush, 41.1'
- B - Mag nail set in W. side wood post, 2' a.g., 21.6'
- C - Mag nail set in W. side power pole, 2' a.g., 94.3'

Boone County witness mark is a 3/8" diameter x 2' long rebar bearing a metal cap stamped "Boone County Witness Point."

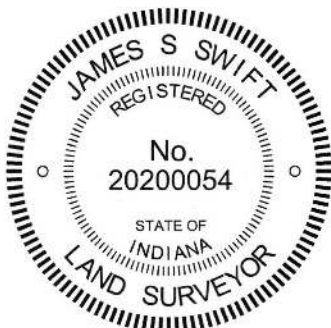
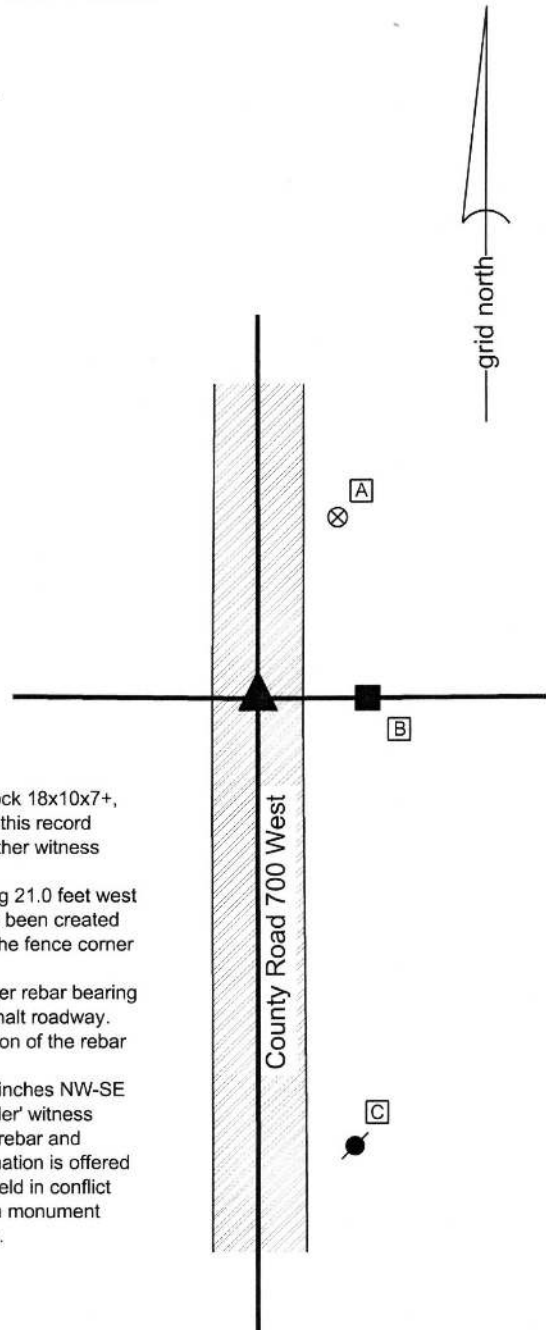
The Harrison monument was set over a stone found.

A BCS record dated May 24, 1895 states, with respect to this corner, "Established rock 18x10x7+, W. rock under 5x6x4, W. rock 'W', 9x7x6 N18°E, 29 1/2 [links]." It is interpreted that this record indicates that one witness rock was set below the primary corner stone and that another witness rock was marked "W" and set 29 1/2 links N18°E.

A BCS tie card dated Nov. 1970 states "Found Stone" and shows the corner as being 21.0 feet west of a fence corner post to the East. A BCS tie card with no date, but believed to have been created in the early 1990s, shows the corner as a 5/8 inch rebar which is 19.25 feet west of the fence corner post to the east.

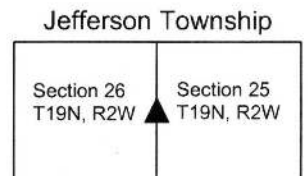
This corner was excavated on June 22, 2015. Prior to excavation, a 5/8 inch diameter rebar bearing a red plastic cap (markings illegible) was found at 5 inches deep in a hole in the asphalt roadway. An ancient wood corner post was also found on the east side of the road. The position of the rebar fit with the undated tie card.

Excavation revealed a stone found at 13 inches deep. The stone was found to be 7 inches NW-SE by 5 inches NE-SW by 3 inches tall, approximating the dimensions of the record 'under' witness stone. The center of the top of the stone was 1.4 feet west and 0.3 foot north of the rebar and matched the tie to the corner post to east, as shown on the 1970 tie card. No explanation is offered for why the rebar was situated to the east of the stone or why it was established or held in conflict with the previous records. The stone was held as marking the corner and a Harrison monument was set over the top, center of the stone. The rebar was removed during excavation. This corner was originally established as a wood post in 1829.



Kenneth E. Hedge
 Kenneth E. Hedge, County Surveyor

James S. Swift
 James S. Swift, IN LS 20200054
 March 24, 2016



PHOTOGRAPHIC DOCUMENTATION

Date of photography: June 22, 2015

The stone as it was originally exposed.



The stone viewed from above and east.



View from the south looking across the stone and north along County Road 700 West.



View from above and north, showing the stone and the position of the rebar as marked with a plumb-bob.



For details and documentation, refer to related sheet "Section Corner Record."

SECTION CORNER RECORD

NW 150-800

BOONE COUNTY SURVEYOR'S OFFICE

State Plane grid coordinates NAD83 (2011):

North: 1753517.60 East: 3082504.46 (U.S. survey feet)

Type of monument: Iron plug in concrete

Depth: Flush with adjacent road surface

Indiana tie card references:

IN02_T19NR2W27_44 IN02_T19NR2W26_36

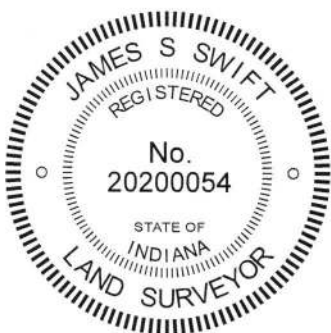
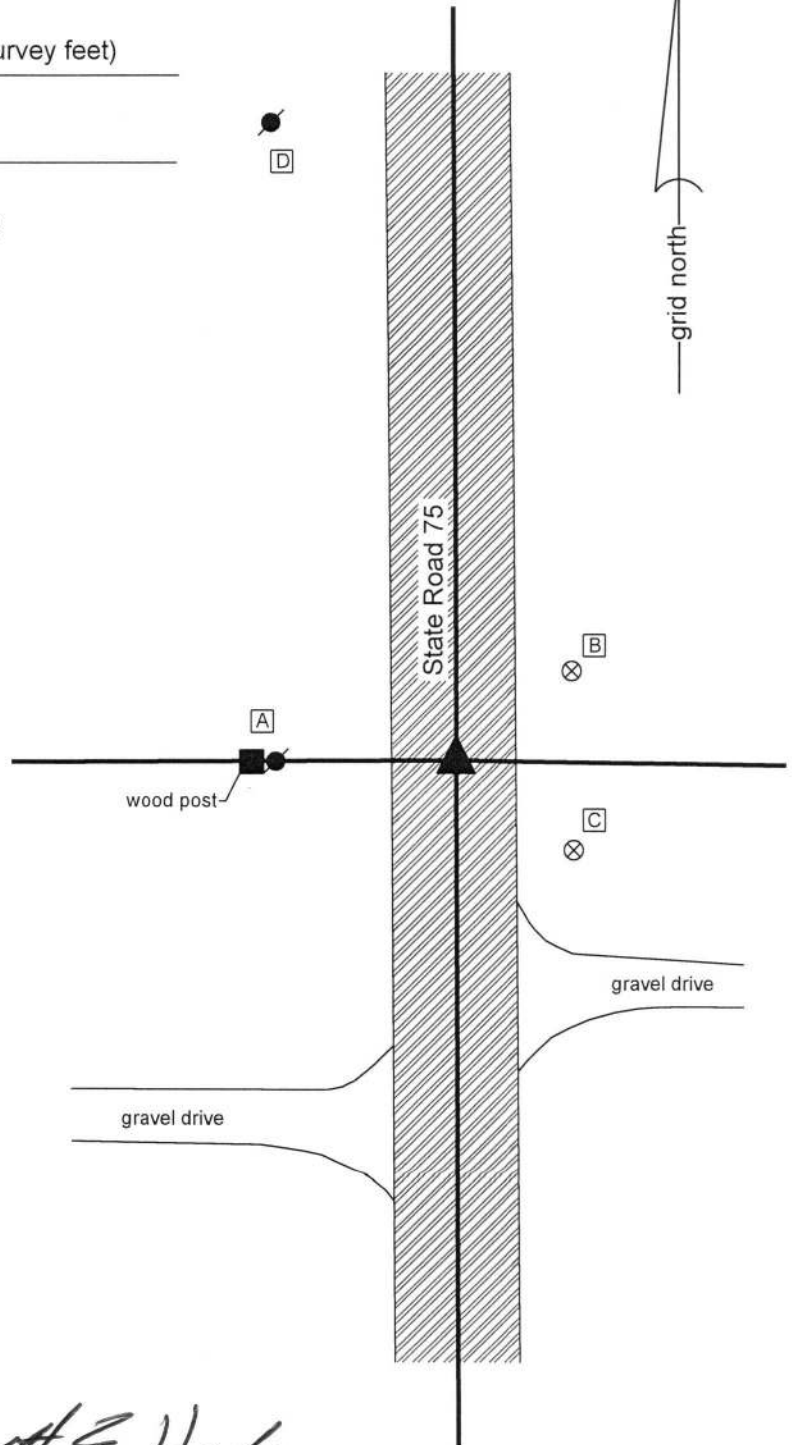


CORNER WITNESS DETAIL

SCALE 1" = 40'

- A - Mag nail set in E. side power pole, 2' a.g., 37.0'
- B - Boone County witness mark, flush, 30.5'
- C - Boone County witness mark, flush, 30.8'
- D - Mag nail set in S.E. side power pole, 2' a.g., 136.1'

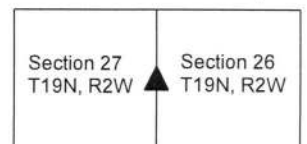
The iron monument in concrete was found in place and accepted as marking the corner. The original date of installation of this monument is not known and has not been confirmed by INDOT. A tie sheet in the Boone County Surveyor's Office with no date, but known to have been submitted to the office in 2001, shows the corner as "rebar / conc. monument." The monument found in the field is believed to be the same monument as shown on the tie card. The monument fits well with the local evidence of the corner in the form of the north-south roadway of State Road 75 and the wood end post on the west side of the road and fits well with the relative distances to proximate corners. The monument is believed to be widely accepted as marking the corner. No excavation was performed at this corner.



Kenneth E. Hedge
Kenneth E. Hedge, County Surveyor

James S. Swift
James S. Swift, IN LS 20200054
July 3, 2018

Jefferson Township



SECTION CORNER RECORD

NW 200-700

BOONE COUNTY SURVEYOR'S OFFICE

State Plane grid coordinates NAD83 (2011):
 North: 1756122.37 East: 3087805.07 (U.S. survey feet)

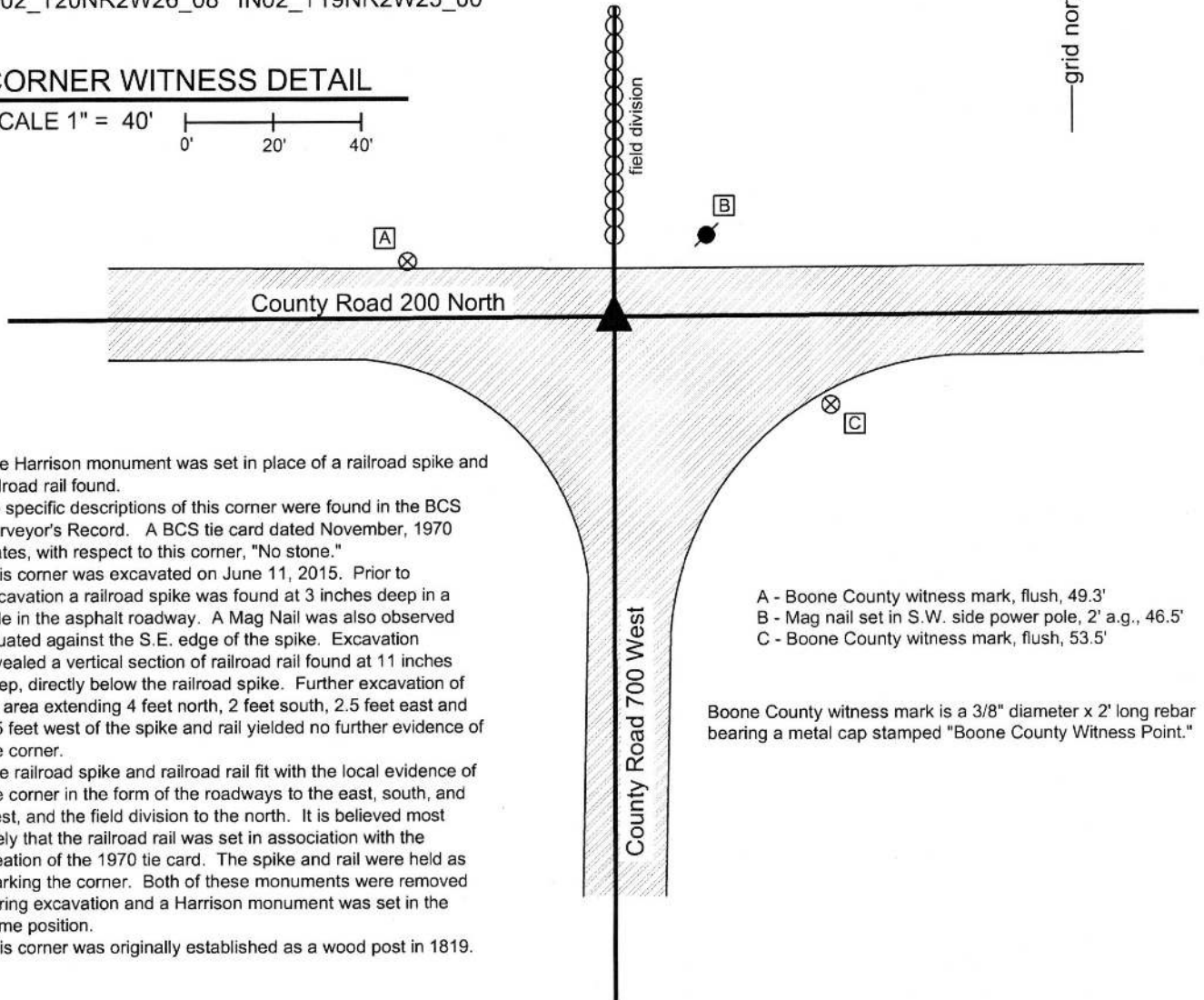
Type of monument: Harrison, 4" disk 'Section Corner'
 Depth: One inch below adjacent road surface

Indiana tie card references:
 IN02_T19NR2W23_80 IN02_T19NR2W24_72
 IN02_T20NR2W26_08 IN02_T19NR2W25_00



CORNER WITNESS DETAIL

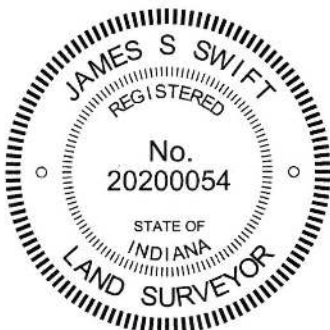
SCALE 1" = 40'



The Harrison monument was set in place of a railroad spike and railroad rail found.
 No specific descriptions of this corner were found in the BCS Surveyor's Record. A BCS tie card dated November, 1970 states, with respect to this corner, "No stone."
 This corner was excavated on June 11, 2015. Prior to excavation a railroad spike was found at 3 inches deep in a hole in the asphalt roadway. A Mag Nail was also observed situated against the S.E. edge of the spike. Excavation revealed a vertical section of railroad rail found at 11 inches deep, directly below the railroad spike. Further excavation of an area extending 4 feet north, 2 feet south, 2.5 feet east and 2.5 feet west of the spike and rail yielded no further evidence of the corner.
 The railroad spike and railroad rail fit with the local evidence of the corner in the form of the roadways to the east, south, and west, and the field division to the north. It is believed most likely that the railroad rail was set in association with the creation of the 1970 tie card. The spike and rail were held as marking the corner. Both of these monuments were removed during excavation and a Harrison monument was set in the same position.
 This corner was originally established as a wood post in 1819.

- A - Boone County witness mark, flush, 49.3'
- B - Mag nail set in S.W. side power pole, 2' a.g., 46.5'
- C - Boone County witness mark, flush, 53.5'

Boone County witness mark is a 3/8" diameter x 2' long rebar bearing a metal cap stamped "Boone County Witness Point."



Kenneth E. Hedge
 Kenneth E. Hedge, County Surveyor

James S. Swift
 James S. Swift, IN LS 20200054
 March 24, 2015

Jefferson Township

Section 23 T19N, R2W	Section 24 T19N, R2W
Section 26 T19N, R2W	Section 25 T19N, R2W

SECTION CORNER RECORD

NW 200-750

BOONE COUNTY SURVEYOR'S OFFICE

State Plane grid coordinates NAD83 (CORS96):

North: 1756115.38 East: 3085144.43 (U.S. survey feet)

Type of monument: Harrison, 4" disk 'Section Corner'

Depth: flush with adjacent road surface

Indiana tie card references:

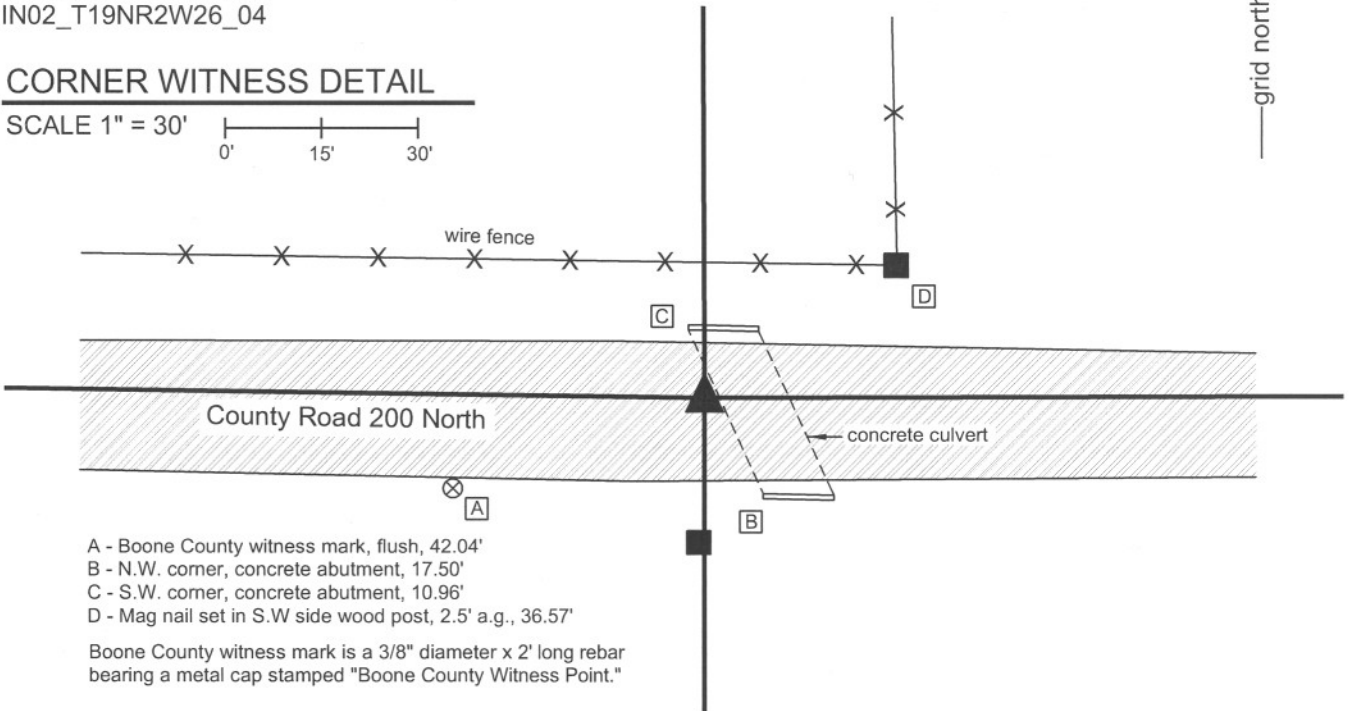
IN02_T19NR2W23_76

IN02_T19NR2W26_04



CORNER WITNESS DETAIL

SCALE 1" = 30'
0' 15' 30'



- A - Boone County witness mark, flush, 42.04'
- B - N.W. corner, concrete abutment, 17.50'
- C - S.W. corner, concrete abutment, 10.96'
- D - Mag nail set in S.W side wood post, 2.5' a.g., 36.57'

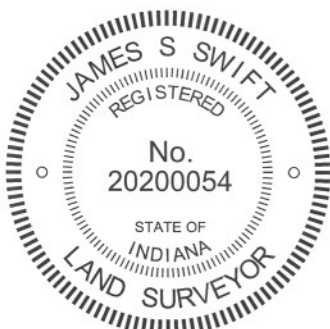
Boone County witness mark is a 3/8" diameter x 2' long rebar bearing a metal cap stamped "Boone County Witness Point."

The harrison monument was set in place of a railroad spike found.

This corner is not specifically described in the BCS Surveyor's Record beyond the original establishment of the corner as a wood post in 1829. However, the north line of section 26 is addressed in BCS records of May 1, 1841. That record demonstrates corners "a" and "b", being the corners 1/4 mile west and east, respectively, of the subject corner, as established along with other corners to the south. A subsequent record of February 25-26, 1873 shows corner "f" of section 23 (being the same as corner "a" of section 26) as being established with the statement "The corner "f" ("a" of Sec. 26, page 236) is 38 links too far west and 27 too far south."

The original notes from the federal survey in 1829 show the subject corner as being set on a "corrected" straight line between the section corners to the east and west, per standard procedures. However, the physical roadway of County Road 200 North deflects from the straight line and contains a significant bend in the vicinity of the subject corner. The generally accepted position of the corner, being in the center of the east-west roadway opposite an old wood end post on the south side of the road, is approximately 22 feet south of the straight line between the section corners to the east and west. The bend in the roadway is clearly visible on the 1939 aerial photos and is believed to be original to the construction of the road. The road is not shown as a wagon road on the 1876 map of the county. It is believed most likely that the 1841 survey created the bend, as the monumented corner 1/4 mile west was discovered to be too far south in 1873. It does not appear that the 1873 correction held, though, as the bend clearly still exists in the roadway. Surveys and deed descriptions to the east hold the corner in the roadway and do not attempt to straighten the line.

This corner was excavated on September 20, 2011. A mag nail was found slightly north of the center of C.R. 200 North opposite a wood end post on the south side of the road. Excavation revealed a railroad spike found at 3 inches deep, 0.1 foot north of the mag nail. A concrete culvert exists adjacent to the corner on the east side and excavation was limited to a 14x14 inch area. Fabric material associated with the construction of the bridge was found at 10 inches deep and hard marterial which appeared to be part of the footer of the bridge was found at the southeast corner of this area of excavation. Clearly, ground disturbance associated with the bridge construction extended beyond the probable corner. Hence, no evidence of the corner in the form of a stone or old stake was expected to be found. The railroad spike found at 3 inches deep was held as the accepted position of the corner. This position is most likely not the original position of the corner as established by the federal government in 1829, being 20 - 25 feet south of the most likely original corner. This position is likely to conform with the layout of the north line of section 26 as established in 1841. The railroad spike was replaced with a harrison monument and is considered to be marking the accepted, if not original, corner.

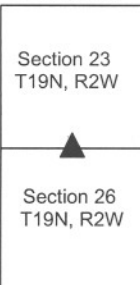


Kenneth E. Hedge
Kenneth E. Hedge, County Surveyor

James S. Swift
James S. Swift, IN LS 20200054

March 30, 2012

Jefferson Township



SECTION CORNER RECORD

BOONE COUNTY SURVEYOR'S OFFICE

NW 200-800

State Plane grid coordinates NAD83 (2011):

North: 1756152.88 East: 3082491.88 (U.S. survey feet)

Type of monument: Iron plug in concrete

Depth: Flush with adjacent road surface

Indiana tie card references:

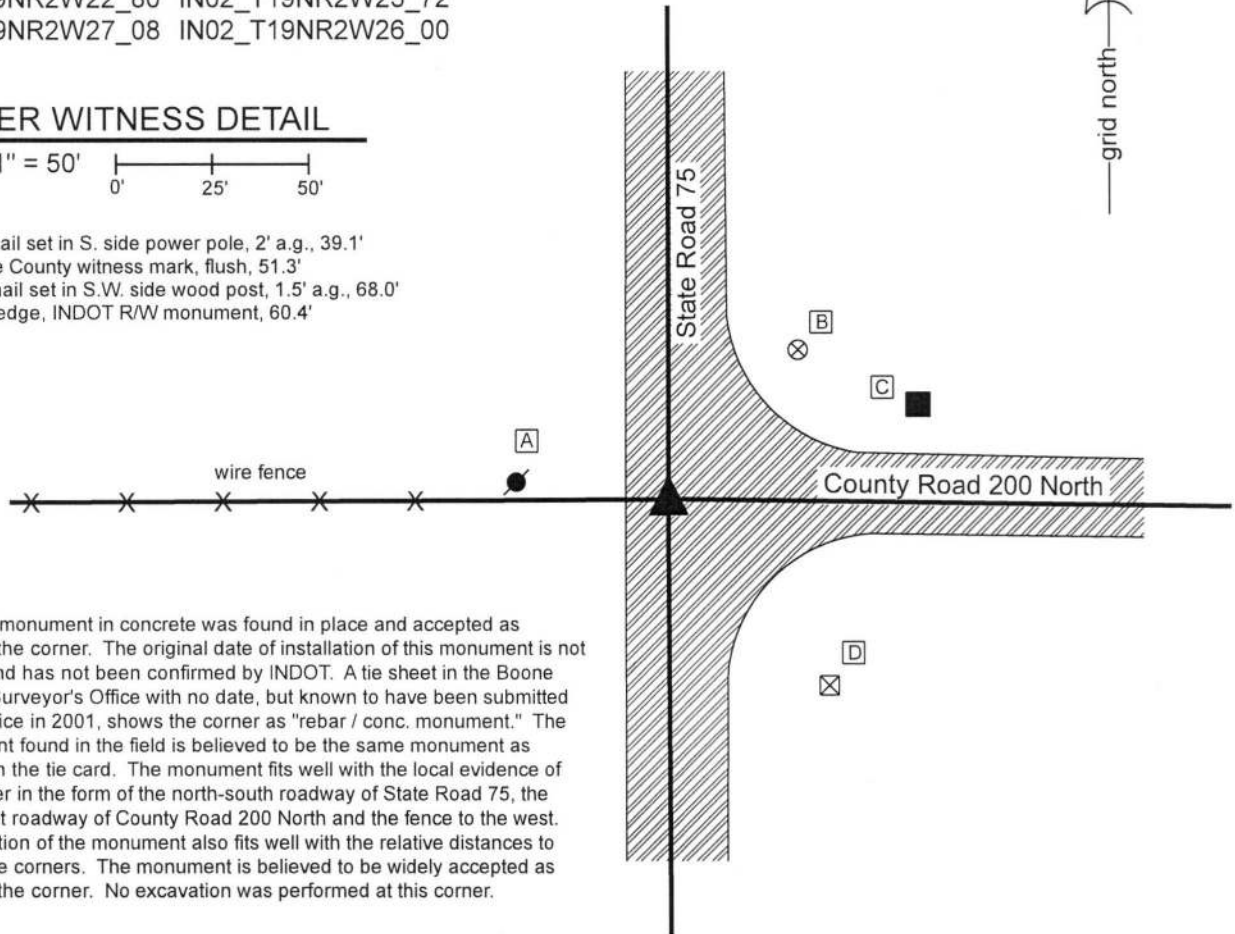
IN02_T19NR2W22_80 IN02_T19NR2W23_72

IN02_T19NR2W27_08 IN02_T19NR2W26_00

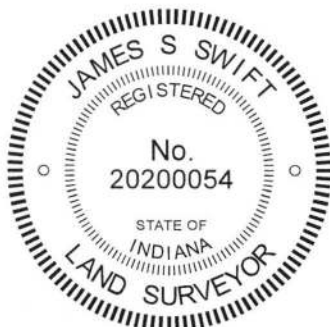
CORNER WITNESS DETAIL

SCALE 1" = 50'

- A - Mag nail set in S. side power pole, 2' a.g., 39.1'
- B - Boone County witness mark, flush, 51.3'
- C - Mag nail set in S.W. side wood post, 1.5' a.g., 68.0'
- D - N.W. edge, INDOT R/W monument, 60.4'



The iron monument in concrete was found in place and accepted as marking the corner. The original date of installation of this monument is not known and has not been confirmed by INDOT. A tie sheet in the Boone County Surveyor's Office with no date, but known to have been submitted to the office in 2001, shows the corner as "rebar / conc. monument." The monument found in the field is believed to be the same monument as shown on the tie card. The monument fits well with the local evidence of the corner in the form of the north-south roadway of State Road 75, the east-west roadway of County Road 200 North and the fence to the west. The position of the monument also fits well with the relative distances to proximate corners. The monument is believed to be widely accepted as marking the corner. No excavation was performed at this corner.



Kenneth E. Hedge
 Kenneth E. Hedge, County Surveyor

James S. Swift
 James S. Swift, IN LS 20200054
 July 3, 2018

Jefferson Township

Section 22 T19N, R2W	Section 23 T19N, R2W
Section 27 T19N, R2W	Section 26 T19N, R2W