

SECTION CORNER RECORD

BOONE COUNTY SURVEYOR'S OFFICE

NE 700-550

State Plane grid coordinates NAD83 (CORS96):
 North: 1783031.31 East: 3153304.42 (U.S. survey feet)

Type of monument: Harrison, 4" disk 'Section Corner'
 Depth: One inch below adjacent road surface

Indiana tie card references:
 IN02_T20NR1E25_76
 IN02_T20NR1E36_04

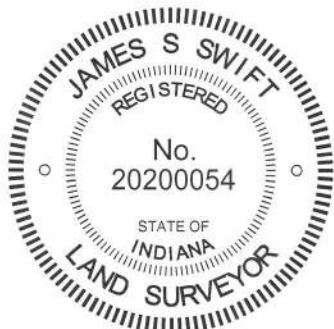
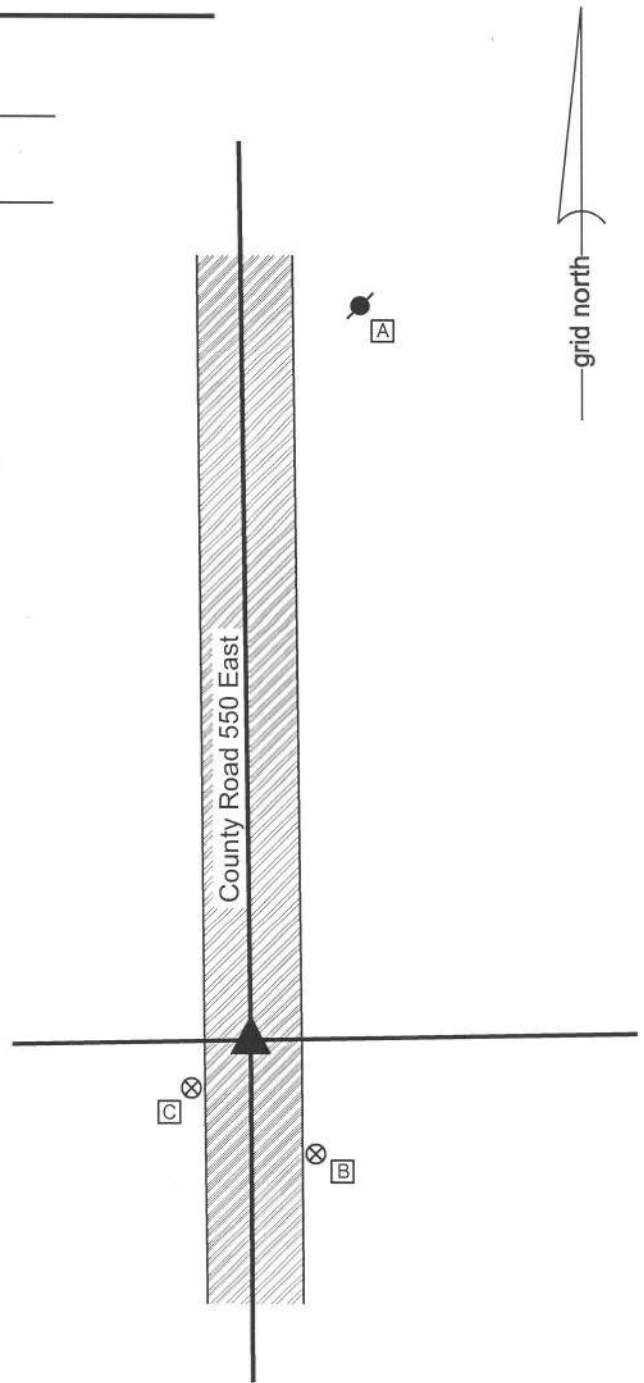
CORNER WITNESS DETAIL

SCALE 1" = 40'

- A - Mag nail set in S. side, power pole, 2' a.g., 153.7'
- B - Boone County witness mark, flush, 27.2'
- C - Boone County witness mark, flush, 15.9'

Boone County witness mark is a 3/8" diameter x 2' long rebar bearing a metal cap stamped "Boone County Witness Point."

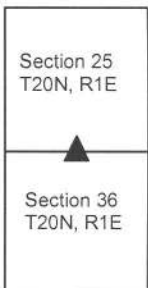
The Harrison monument was set in place of a vertical section of railroad rail found.
 An undated record in the BCS Surveyor's Record states, with respect to this corner, "Established by intersecting lines 'C' 'b' with lines '6' and '5' in sect 25, T20N, R1E. Set rock + 8,18,20 in road." It is noted that 'C' and 'b' refer to the corners approximately 1/2 and 1/4 miles east, respectively, of the subject corner and that '6' and '5' refer to intermediate corners between the subject corner and the center quarter corner of section 25.
 A BCS tie card dated August 20, 1968 states "Found Stones."
 This corner was excavated on May 29, 2015. Prior to excavation, the top of a vertical section of railroad rail was visible in a shallow hole in the center of the asphalt roadway. Excavation of a small area around the railroad rail revealed no further evidence of the corner. It is believed that the stones found in 1968 were removed and replaced with the railroad rail at that time. This is known to have been a common practice of BCS field crews in the late 1960s.
 The position of the top of the rail, as originally found, was held as marking the corner. The rail was removed and replaced with a Harrison monument in the same position.
 This corner was originally established as a wood post in 1822.



Kenneth E. Hedge
 Kenneth E. Hedge, County Surveyor

James S. Swift
 James S. Swift, IN LS 20200054
 March 27, 2015

Clinton Township



SECTION CORNER RECORD

NE 700-600

BOONE COUNTY SURVEYOR'S OFFICE

State Plane grid coordinates NAD83 (2011):

Corner 1: North: 1783137.43 East: 3155919.39 (U.S. survey feet)

Type of monument: Harrison, 4" disk 'Section Corner'

Depth: Three inches above surrounding ground

Indiana tie card references:

IN02_T20NR2E30_72 IN02_T20NR1E25_80

IN02_T20NR1E36_08 IN02_T20NR2E31_00

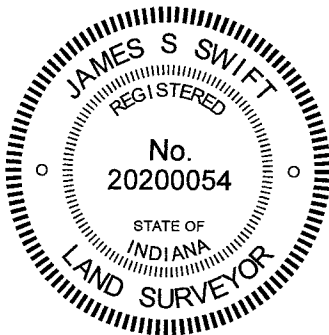
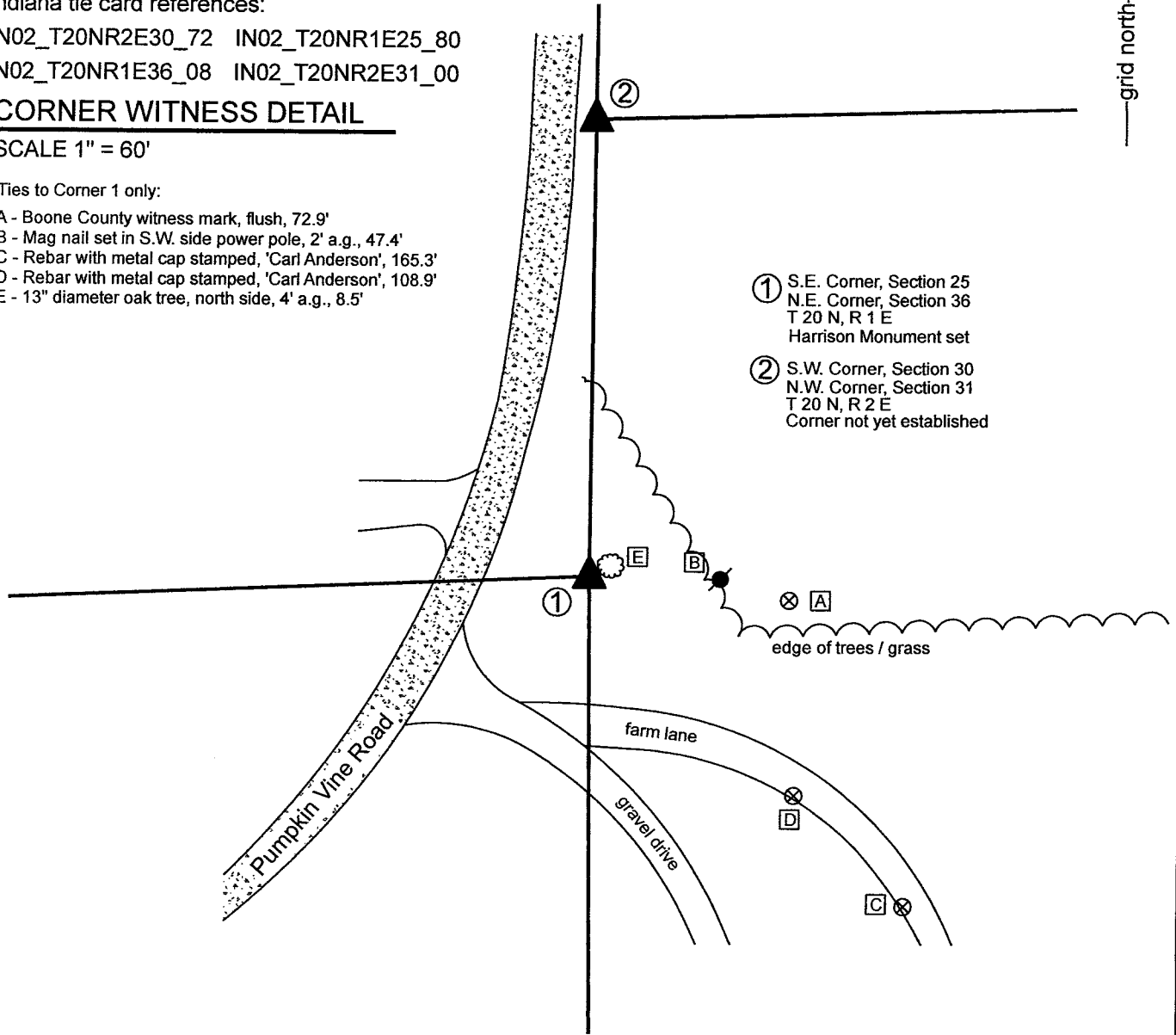
CORNER WITNESS DETAIL

SCALE 1" = 60'

Ties to Corner 1 only:

- A - Boone County witness mark, flush, 72.9'
- B - Mag nail set in S.W. side power pole, 2' a.g., 47.4'
- C - Rebar with metal cap stamped, 'Carl Anderson', 165.3'
- D - Rebar with metal cap stamped, 'Carl Anderson', 108.9'
- E - 13" diameter oak tree, north side, 4' a.g., 8.5'

- ① S.E. Corner, Section 25
N.E. Corner, Section 36
T 20 N, R 1 E
Harrison Monument set
- ② S.W. Corner, Section 30
N.W. Corner, Section 31
T 20 N, R 2 E
Corner not yet established



Kenneth E. Hedge
 Kenneth E. Hedge, County Surveyor

James S. Swift

James S. Swift, IN LS 20200054

January 6, 2020 Page 1 of 2

Clinton Township	Marion Township
Section 25 T20N, R1E	Section 30 T20N, R2E
Section 36 T20N, R1E	Section 31 T20N, R2E

SECTION CORNER RECORD

BOONE COUNTY SURVEYOR'S OFFICE

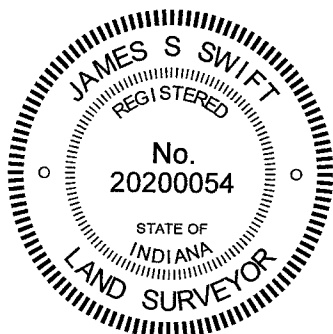
NE 700-600

WRITTEN DOCUMENTATION


The Harrison monument at Corner 1 was set in place of a rebar found. The precise position of Corner 2 has not been established as of the publication of this document. No specific descriptions of Corner 1 were found in the BCS Surveyor's Record beyond the original establishment of the corner as a wood post in 1819. Corner 2 is referenced in an entry of December 19-21, 1865 which states that the corner was "found by measuring from N.E. corner, Sect. 36." This record does not state what, if any, monument was set at that time nor does it specify by what 'measure' the corner was established.

Substantial reconnaissance was performed with respect to these corners and adjacent private properties to the southeast and southwest in November, 2020. A survey by Ronald A. Wharry, LS No. S0420 dated December 22, 1992, which is not recorded in the Office of the Boone County Recorder but was provided by an adjacent property owner shows Corner 1 as a rebar set and shows Corner 2 at or near a wood corner post. The rebar which set to mark Corner 1 as part of that survey was found in good condition, evidently undisturbed. The position of the monument was confirmed with respect to the relative positions of other monuments shown on the survey. The position of the corner works well with adjacent monuments and deed calls for properties to the southeast, southwest and northwest. A post shown as Corner 2 was also found. It is noted that the distance between the post and the rebar is 165.5 feet, substantially longer than the 213 link (140.6 feet) offset recorded by the federal surveyors in 1822. It is further noted that the position of the rebar marking Corner 1 works well with the available evidence of properties in Range 1 East and that the post appears to work with evidence in Range 2 East.

Probing and manual evidence in the immediate vicinity of the Wharry rebar revealed no stones or further evidence of Corner 1. Manual excavation in the vicinity of the wood post revealed several rocks, none of which appeared to represent corner stones. The Wharry rebar was accepted as the best available evidence of Corner 1 and was replaced with a Harrison monument on December 10, 2020. The position of Corner 2 remains uncertain, pending further investigation as well as excavation of the section corners approximately 1/2 mile north.




Kenneth E. Hedge, County Surveyor


James S. Swift, IN LS 20200054

SECTION CORNER RECORD

NE 750-500

BOONE COUNTY SURVEYOR'S OFFICE

State Plane grid coordinates NAD83 (CORS96):

North: 1785590.27 East: 3150636.97 (U.S. survey feet)

Type of monument: Harrison, 4" disk 'Section Corner'

Depth: six inches below adjacent gravel road surface

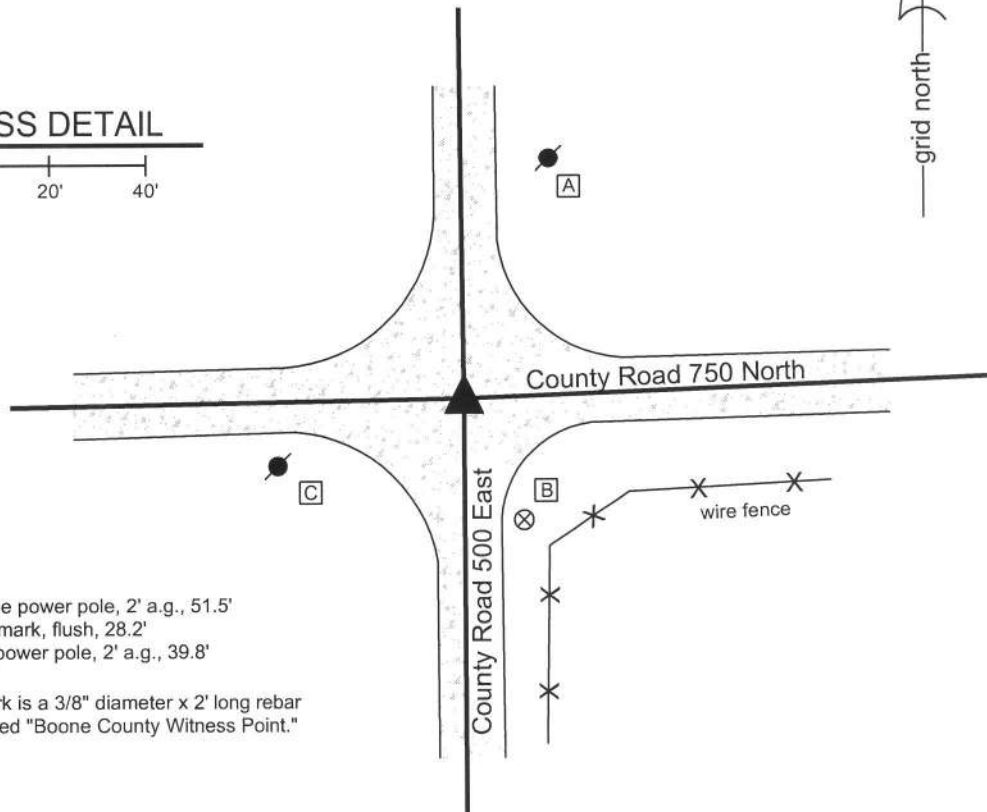
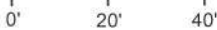
Indiana tie card references:

IN02_T20NR1E25_36

IN02_T20NR1E26_44

CORNER WITNESS DETAIL

SCALE 1" = 40'



A - Mag nail set in S.W. side power pole, 2' a.g., 51.5'

B - Boone County witness mark, flush, 28.2'

C - Mag nail set in E. side power pole, 2' a.g., 39.8'

Boone County witness mark is a 3/8" diameter x 2' long rebar bearing a metal cap stamped "Boone County Witness Point."

The Harrison monument was set in place of a vertical section of railroad rail found.

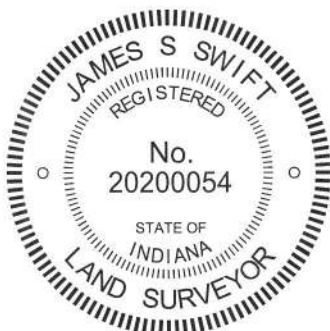
A BCS record of January 23, 1872 states "Reestablished from stump of Oak mark found by chopping. Set Rock 9.6.6 +." A BCS tie card dated September 3, 1968 states "no stone." A BCS tie card dated May 28, 1975 states "Stone Found - 16" deep. Set Rail."

This corner was excavated on November 18, 2013. Prior to excavation, a vertical section railroad rail was found at 9 inches deep in the gravel road.

Excavation revealed a rebar found at 1 foot north and 0.5 foot west of the rail. Further excavation revealed no more evidence of the corner. The clay layer below the road was found to begin at 17 inches deep. It is believed that the stone found in 1975 was removed and replaced with the railroad rail.

This is known to have been a common practice of BCS field crews in the late 1960s and early 1970s. The rail was removed and replaced with a Harrison monument set in the same position.

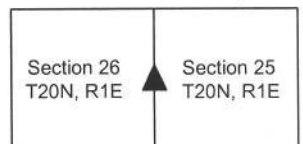
This corner was originally established as a wood post in 1822.



Kenneth E. Hedge
 Kenneth E. Hedge, County Surveyor

James S. Swift
 James S. Swift, IN LS 20200054
 February 5, 2015

Clinton Township



SECTION CORNER RECORD

BOONE COUNTY SURVEYOR'S OFFICE

NE 800-500

State Plane grid coordinates NAD83 (CORS96):

North: 1788222.91 East: 3150608.23 (U.S. survey feet)

Type of monument: Harrison, 4" disk 'Section Corner'

Depth: six inches below adjacent gravel road surface

Indiana tie card references:

IN02_T20NR1E23_80 IN02_T20NR1E24_72

IN02_T20NR1E26_08 IN02_T20NR1E25_00

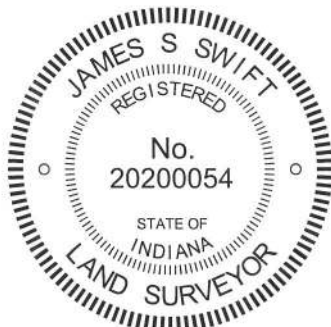
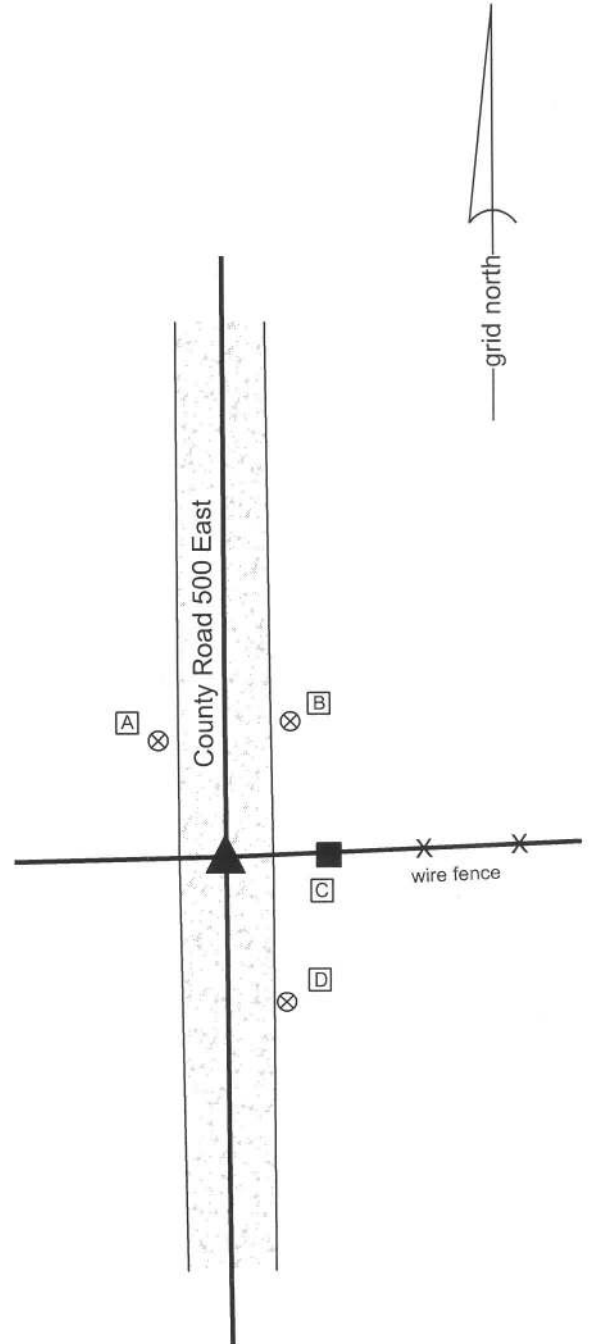
CORNER WITNESS DETAIL

SCALE 1" = 30'

- A - Boone County witness mark, flush, 21.0'
- B - Boone County witness mark, flush, 23.5'
- C - Mag nail set in W. side post 2' a.g., 16.4'
- D - Boone County witness mark, flush, 24.5'

Boone County witness mark is a 3/8" diameter x 2' long rebar bearing a metal cap stamped "Boone County Witness Point."

The harrison monument was set in place of a stone found. A BCS record of December 13 & 26, 1871 states "Reestablished from stump of S.E. tree and an old rotten stake we found when digging hole for rock which is 16.8.5 + and two small pieces under it." A BCS tie card dated May 30, 1975 states "no stone found - set rod." A BCS tie card dated March 18, 1996 shows the corner as a rebar with no documentation of source. This corner was excavated on November 18, 2013. A stone was found flush with the surface of the road with a 5/8 inch rebar along the southeast side of the stone. The stone appeared to be leaning slightly to the east. The stone was removed from the road and found to measure 13 inches tall by 8 inches N-S by 5 inches E-W with an etched "+" mark on the west side, 4 inches from the top. Two smaller rocks were found below the stone, set in a manner which indicated that they were intended to support the stone and keep it vertical. These stones appear to each be half of a rock which split down the middle and they look like mirror images of each other. Each of the smaller stones measures 9 inches by 5 inches by 3 inches, more or less. The three stones together closely match the description from the 1871 record, except for the height of the main stone, which is 3 inches shorter than the record. The stone did appear to have been broken off at the top, which is logical given the fact that the top of the rock was flush with the road surface as originally found, and which would explain the variation from the 1871 description. All monuments were removed from the road and a harrison monument was set in place of the stone as it would be have been positioned if vertical. The rebar had been on the northwest side of the stone, 0.3' west and 0.3' north of the position held as the corner. This corner was originally established as a wood post in 1822.



Kenneth E. Hedge
 Kenneth E. Hedge, County Surveyor

James S. Swift
 James S. Swift, IN LS 20200054
 February 5, 2015

Clinton Township

Section 23 T20N, R1E	Section 24 T20N, R1E
Section 26 T20N, R1E	Section 25 T20N, R1E

PHOTOGRAPHIC DOCUMENTATION
Date of photography: November 18, 2013

View of the stone from above and west.



The stone, removed from the road, showing the etched mark that was on the east side of the stone.



The stone, removed from the road, along with the two small rocks found below.



For details and documentation, refer to related sheet "Section Corner Record."

View from the west, looking across the stone and along the adjacent fence line to the east.



View from the south, looking across the stone and north along County Road 500 East.



SECTION CORNER RECORD

NE 800-550

BOONE COUNTY SURVEYOR'S OFFICE

State Plane grid coordinates NAD83 (CORS96):

North: 1788334.84 East: 3153242.37 (U.S. survey feet)

Type of monument: Harrison, 4" disk 'Section Corner'

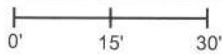
Depth: One inch below adjacent road surface

Indiana tie card references:

IN02_T20NR1E24_76 IN02_T20NR1E25_04

CORNER WITNESS DETAIL

SCALE 1" = 30'



The harrison monument was set in place of a vertical section of railroad rail. A BCS record pertaining to this corner, dated December 13 and 26, 1871, states "Reestablished in straight line due South of where it was before. Set a Rock due South of where it was before. Set a Rock 14.8.8 + and three small ones under it or around it." A BCS record dated July 16, 1871 states "Established W. corner Set Rock 6x12x14 +. Rock was set 5 feet due south of true point for corner, on line, on account of the point coming on a bridge. Old witness Ash stands N 15° E from true point, distant 149 links. Several small rocks and brick bats were placed beneath and around the witness corner." A BCS tie card dated August 19, 1968 states "No stone" and graphically demonstrates the corner to be slightly south of a bridge. A BCS tie card dated September, 1995 shows the corner to be a 5/8 inch rebar, south of a CMP culvert and north of a fence to the west.

This corner was excavated on June 5, 2014. Prior to excavation, a rebar with a plastic cap (markings illegible) was found in the center of the road, per the 1995 distance ties. Excavation revealed a vertical section of railroad rail found at 9 inches deep, slightly west of the rebar. Further excavation revealed significant evidence of prior disturbance in the immediate vicinity of the corner. Several large pieces of concrete were found at a approximately 2 feet deep, immediately north of the rebar. At 30 inches deep, approximately 1.5 feet north of the rebar and rail, formed concrete was found which appeared to represent the footer of a prior bridge structure. Further excavation to the clay layer (34 inches deep) south of the formed footer revealed no further evidence of the corner.

It is noted that the fence to the west was clearly south of the corner, but it is also noted that the fence is generally along the top of the bank of the open ditch running east-west through this area. The position of the fence is most likely controlled by topography and is not considered evidence of the section line. The records from the 1800s clearly state that the stones were set south of the true corner due to the presence of a bridge at the corner. This casts some doubt on the position of the railroad rail, being south of the footer of the old bridge. A pure interpretation of the evidence with respect to the record implies that the corner may be north of the rail, as found. This interpretation is also borne out by the relative distances to the corners to the north and south. However, it is not known when the bridge for which the footer was installed and it is not possible to know, with the available evidence, whether this is the same bridge referred to in the records of the 1800s, or how the found footer fit with the surface of the bridge. Much is uncertain relative to the old records and the found evidence. Given this uncertainty and the apparent previous acceptance of the rail and rebar as representing the corner since at least 1968, the rail was accepted as marking the corner. The rail and rebar were removed. A Harrison monument was set in the position of the top of the rail, as found. The rebar had been approximately 0.5 foot east of the rail.

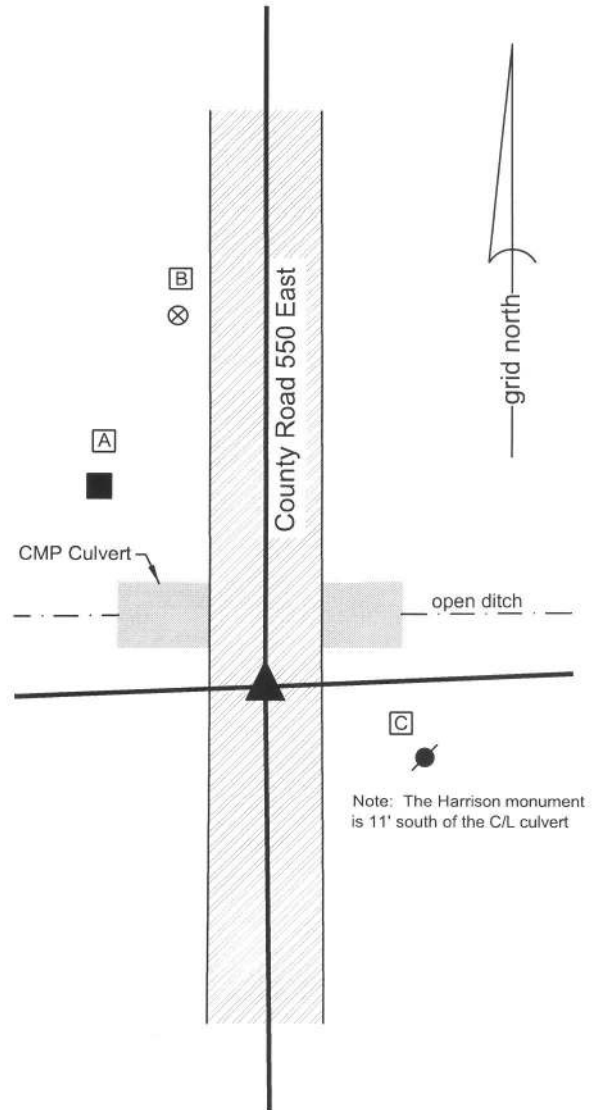
This corner was originally established as a wood post in 1822.

A - Mag nail set in E. side wood post, 3.5' a.g., 40.0'

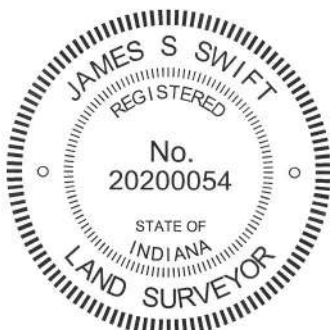
B - Boone County witness mark, flush, 59.6'

C - Mag nail set in w. side power pole, 2' a.g., 25.9'

Boone County witness mark is a 3/8" diameter x 2' long rebar bearing a metal cap stamped "Boone County Witness Point."



Note: The Harrison monument is 11' south of the C/L culvert



Kenneth E. Hedge
 Kenneth E. Hedge, County Surveyor

James S. Swift
 James S. Swift, IN LS 20200054
 March 27, 2015

Clinton Township

Section 24
T20N, R1E

Section 25
T20N, R1E

SECTION CORNER RECORD

NE 800-600

BOONE COUNTY SURVEYOR'S OFFICE

State Plane grid coordinates NAD83 (2011):

Corner 1: North: 1788449.66 East: 3155925.81 (U.S. survey feet)

Corner 2: North: 1788627.86 East: 3155926.02 (U.S. survey feet)

Type and depth of monument:

Corner 1: Harrison, 4" disk 'Section Corner' 3 inches above grade

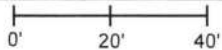
Corner 2: 5/8" rebar with metal cap 'Boone County Surveyor' 14 inches deep

Indiana tie card references:

IN02_T20NR1E24_80 IN02_T20NR2E19_72

IN02_T20NR1E25_08 IN02_T20NR2E30_00

CORNER WITNESS DETAIL

SCALE 1" = 40' 

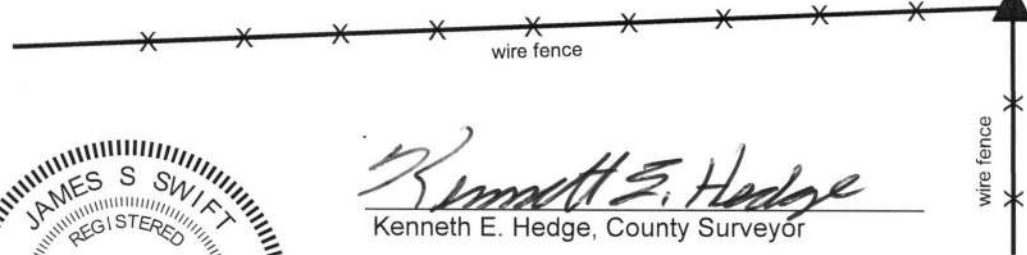
The Harrison monument at Corner 1 was set over remnants of a wood post found. The rebar at Corner 2 was set at a calculated position.

A BCS record of December 13 & 26, 1871 states, with respect to Corner 1, "Reestablished by running the line from D Section 25 North 79.80 to D of this Sect. I think the Oak B Tree was a little west of the range line but am not sure but it is gone. Placed corner in the middle of the line I run 39.80 from D and 270 links South of corner Section 19 & 30. Set a Rock 14.10.7 +." The record also includes a long note explaining the establishment of the south line of section 24.

A BCS record of December 20, 1870 states, with respect to Corner 2, "SW cor Sect [19] Reestablished at intersection of Range line with South line Sect from E to e & F to f. Set a Rock 8.6. by 5 1/2 + & a stake under it."

Excavation was performed at Corner 1 on April 25, 2018. Prior to excavation, standing fences were visible to the south and west of the corner, but the immediate vicinity of the corner was clearly disturbed, with a variety of rocks and old fencing piled together at the point where the standing fences intersect and also slightly SW of that point. The rubble was removed from the apparent position of the corner and substantial manual excavation was performed in this immediate vicinity. The stone 14.10.7 stone called for in the December 13 & 26, 1871 record was not found. It is considered most likely that the stone was removed prior to or during the obvious disruption of the corner which caused the pile of rubble. However, remnants of a wood post were found at 10 inches deep at the exact point where the fences from the south and west appear to intersect. The post appeared to be of the same size and character as the posts supporting the standing fencing to the south and west. The remnants of the post were accepted as representing the best available evidence of the corner and were held as marking the corner. It is noted that this corner, together with the south quarter corner and southwest corner of Section 24 (see corners NE 800-500 and NE 800-550) fall close to a straight line, which correlates with the explanatory notes from the 1871 record discussing the establishment of the south line of Section 24.

Corner 2 falls in a tilled field. The position of Corner 2 was computed on the range line at 270 links north of Corner 1. Excavation in the vicinity of this calculated position on April 27, 2018 revealed various pieces of broken clay tile at up to 12 inches deep, indicating previous disturbance of this corner. A 30 inch length of 5/8 inch rebar was set at at the calculated position. The rebar was set 14 inches below the surface grade of the field and capped with a metal cap stamped 'Boone County Surveyor.' The 270 links (178.2') distance was held as firm, though a scale factor of 1.00451 is typically applied to distances reported in records from 1860 to 1895. An uncertainty of approximately 0.8 foot N-S is therefore associated with the position of Corner 2 with respect to the offset distance held.

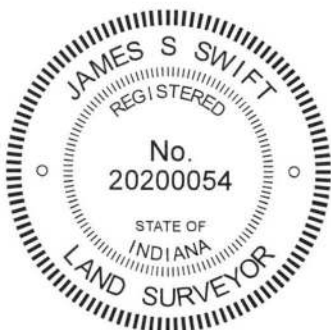


② S.W. Corner, Section 19
N.W. Corner, Section 30
T 20 N, R 2 E

The Harrison monument at Corner 1 is situated at the intersection of standing fences to the south and west, witnessed by an orange fiberglass lathe labeled 'Survey Markef.' The monument is adjacent to and northeast of a pile of rocks and fencing. Corner 2 falls within a tilled field, set at 14 inches below grade and is not visible on the surface. No other distance ties are provided.

Distance between monuments:
178.2' (270 links)

① S.E. Corner, Section 24
N.E. Corner, Section 25
T 20 N, R 1 E



Kenneth E. Hedge
Kenneth E. Hedge, County Surveyor

James S. Swift
James S. Swift, IN LS 20200054
May 23, 2018

Clinton Township	Marion Township
Section 24 T20N, R1E	Section 19 T20N, R2E
Section 25 T20N, R1E	Section 30 T20N, R2E