

# SECTION CORNER RECORD

NW 100-100

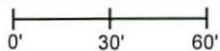
## BOONE COUNTY SURVEYOR'S OFFICE

State Plane grid coordinates NAD83 (2011):  
 North: 1750877.41 East: 3119511.14 (U.S. survey feet)

Type of monument: Harrison, 4" disk 'Section Corner'  
 Depth: Flush with adjacent road surface

Indiana tie card references:  
 IN02\_T19NR1W25\_80 IN02\_T19NR1W26\_72  
 IN02\_T19NR1W35\_08 IN02\_T19NR1W36\_00

### CORNER WITNESS DETAIL

SCALE 1" = 60' 

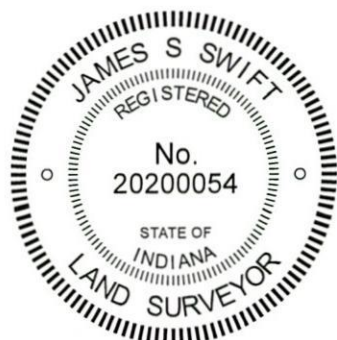
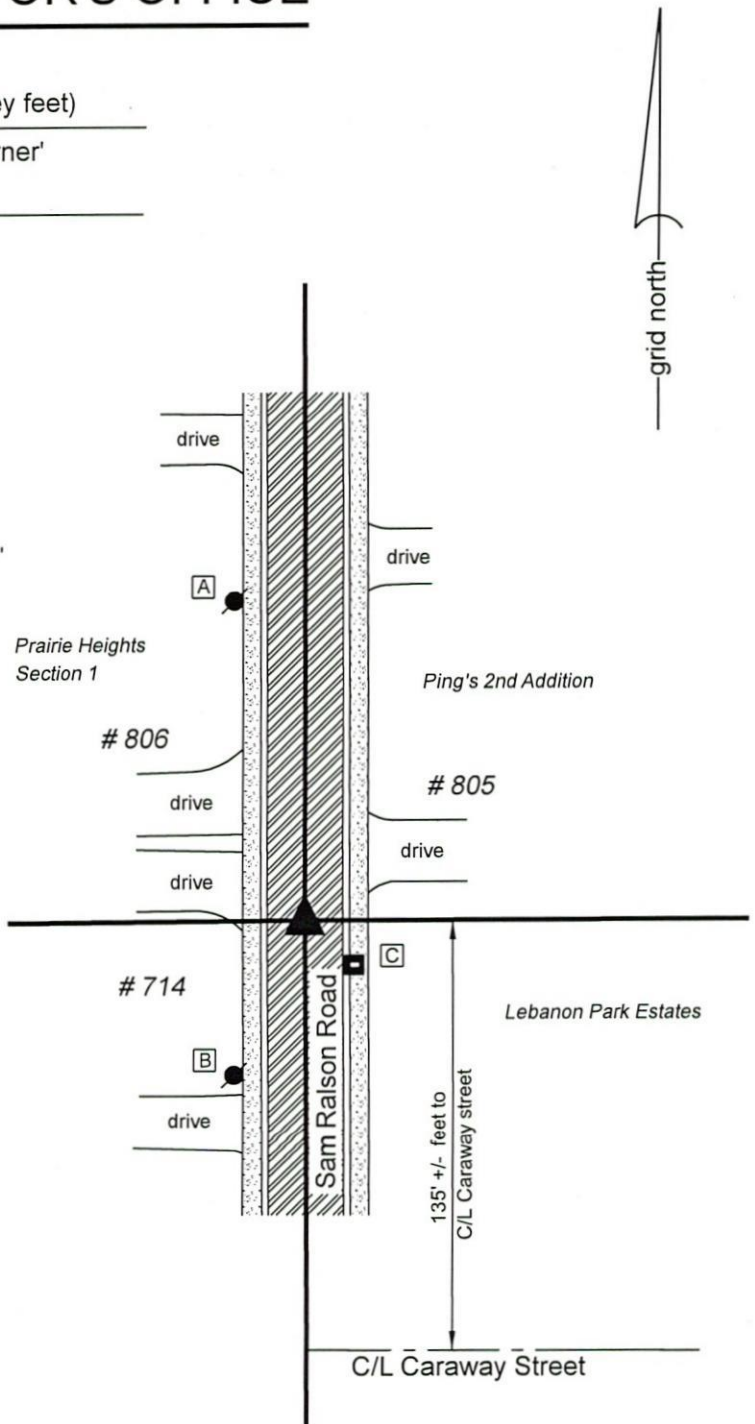
- A - Mag nail in E side PWP, 2' a.g., 101.6'
- B - Mag nail in S side PWP, 2' a.g., 53.1'
- C - Notch in NW edge of post, Mailbox 714 Sam Ralston Rd., 20.7'

The Harrison Monument was found in place. A BCS record dated June 27, 1872 states, with respect to this corner, "Set Reest'd from trees. Oak lately cut down. Is 18 links to Elm. Set rock 31x13x8 +." A BCS tie card dated January 18, 1994 shows the corner as a railroad rail with rebar.

No excavation was performed at this corner. A Harrison monument was found. It is believed that this monument is situated over or in place of the railroad rail referenced in the 1994 tie card. Both the Harrison monument and railroad rail were most likely set in cooperation with the Boone County Surveyor's Office but documentation for that was not found. The Harrison monument has been in place since at least 2006. It is believed that the position of the Harrison monument or railroad rail has been held for numerous surveys for many years and that the adjoining subdivisions and properties are tied to this corner position. (See Prairie Heights, Section 1, Ping's 2nd Addition and various plats for Lebanon Park Estates) The position of the monument works well with local evidence in the form of the center of the road and works well with the relative positions of the corners approximately 1/2 and 1 mile west, respectively (see Boone County Corners NW 100-150 and NW 100-200.)

The Harrison monument was held as marking the corner and was left in place, undisturbed.

This corner was originally established as a wood post in 1822.



*Kenneth E. Hedge*  
 Kenneth E. Hedge, County Surveyor

*James S. Swift*  
 James S. Swift, IN LS 20200054  
 February 5, 2020

Center Township

Section 26 T19N, R1W	Section 25 T19N, R1W
Section 35 T19N, R1W	Section 36 T19N, R1W

# SECTION CORNER RECORD

NW 150-000

## BOONE COUNTY SURVEYOR'S OFFICE

State Plane grid coordinates NAD83 (2011):

Corner 1: North: 1753516.78 East: 3124836.73 (U.S. survey feet)

Corner 2: North: 1753550.08 East: 3124836.71 (U.S. survey feet)

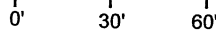
Monument: 5/8" diameter rebar, 24" long, with aluminum cap stamped 'Boone County Surveyor', flush with adjacent ground

Indiana tie card references:

IN02\_T19NR1W25\_44 IN02\_T19NR1E30\_36

### CORNER WITNESS DETAIL

SCALE 1" = 60'



A - West edge pole post, fence north and south, 1' a.g.,

29.3' to Corner 1, 10.2' to Corner 2

B - N.W. edge pole post, fence north and southwest, 1' a.g.,

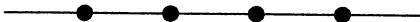
52.7' to Corner 1, 85.7' to Corner 2

C - South edge pole post, end of outfield fence

63.3' to Corner 1, 88.5' to Corner 2

D - S.W. corner concrete pad, batting cage

65.9' to Corner 1, 40.9' to Corner 2



- chainlink fence

- ① East Quarter Corner  
Section 25, T 19 N, R 1 W  
5/8" diameter rebar in concrete
- ② West Quarter Corner  
Section 30, T 19 N, R 1 E  
5/8" diameter rebar in concrete  
Distance between monuments: 33.3'



Ulen Country Club

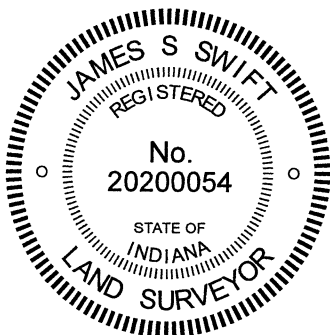
Lebanon Memorial Park

Baseball field

ASPHALT ROAD

POOL AREA

SEE PAGE 2 FOR WRITTEN REPORT



*Kenneth E. Hedge*  
Kenneth E. Hedge, County Surveyor

*James S. Swift*  
James S. Swift, IN LS 20200054

December 9, 2020 Page 1 of 2

Center Township

Section 25 T19N, R1W	Section 30 T19N, R1E
-------------------------	-------------------------

# SECTION CORNER RECORD

NW 150-000

## BOONE COUNTY SURVEYOR'S OFFICE

State Plane grid coordinates NAD83 (2011):

Corner 1: North: 1753516.78 East: 3124836.73 (U.S. survey feet)

Corner 2: North: 1753550.08 East: 3124836.71 (U.S. survey feet)

Monument: 5/8" diameter rebar, 24" long, with aluminum cap stamped 'Boone County Surveyor', flush with adjacent ground

Indiana tie card references:

IN02\_T19NR1W25\_44 IN02\_T19NR1E30\_36

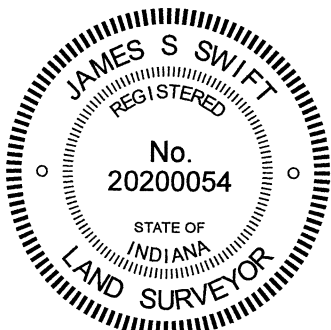
The rebar at Corner 2 was set in place of a 5/8-inch diameter rebar found 9 inches below grade. The rebar at Corner 1 was set at a calculated position.

Corner 1 represents an original corner of the PLSS, set on the Second Principal Meridian in 1819. Corner 2 is not an original corner of the PLSS. The computed average offset between the two corners, per the original federal field notes, is 57.5 links or 37.95 feet.

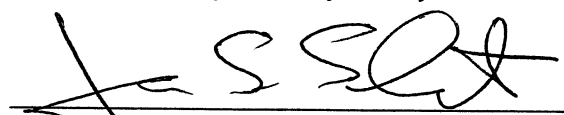
A 5/8-inch diameter rebar with orange plastic cap stamped 'section corner' was found at 9 inches below grade, west of a north-south chain link fence and in-line with a fence to the east providing evidence of occupation between Lebanon Memorial Park and the Ulen Country Club. The rebar is shown as having been set on a survey by Cary B. Dodge, Indiana LS No S0288, dated June 24, 2004 which is recorded as the final three pages of the deed for the Cowan to Winteregg property, recorded as Instrument 040806 in the Office of the Boone County Recorder. Notably, the plat of the Sunny Brook Addition to Lebanon, recorded in Plat Book 2, page 152B and certified by Frank S. Howard, Indiana Registered Engineer No. 3667 on October 11, 1954, is tied to this corner. Sunny Brook is located entirely in Section 25, T19N, R1W but is described from the southwest corner of the northwest quarter of Section 30, T19N, R1E. No reference is made to the southeast corner of the northeast quarter of Section 25. The position of the found, capped rebar fits precisely with monuments found marking lot corners on the east side of Sunny Brook and it appears that Mr. Dodge established the position of the corner with respect to the Sunny Brook Addition. The Winteregg and Cowan properties are also in Section 25. Hence, it is noted that the deeds for nearby properties and the nearby subdivision in Section 25 are all tied to the west quarter corner of Section 30, rather than the east quarter corner of Section 25. Furthermore, the deed for the adjoining part of the Lebanon Memorial Park, as described in Deed Record 129, page 422, dated June 7, 1935, is also in Section 25, but tied to the southwest corner of the northwest quarter of Section 30. Clearly, the west quarter corner of Section 30 has been treated as the dominant corner for a long time. The found rebar was accepted as marking this corner. No excavation was performed due to the presence of underground utilities in the immediate vicinity of the corner.

Though not called out in the deeds of the adjoining and nearby properties, the east quarter corner of Section 25 is nonetheless important, as it represents the easterly terminus of the line between numerous properties west of State Road 39. Most of these properties are platted as part of several different additions of the 'Northfield Village.' The first plat of this series is recorded in Plat Book 2, page 140 in the Recorder's Office, certified by Frank S. Howard, the same engineer who laid out the Sunny Brook Addition. The plat does not show the east quarter corner of Section 25, but is referenced to it. Additional Northfield Village plats also do not show this corner, but are clearly tied to the line between the northeast and southeast quarters of Section 25. The commercial properties immediately west of State Road 39 which adjoin this line (see R.J.L. Properties LLC, Instrument 2006001571, Parkview Center LLC, Instrument 2014004070 and Goodrich Quality Theaters, Instrument 20200010438) are all referenced to the northwest corner of the northeast quarter of the southeast quarter of section 25 and call for the quarter section line. A 5/8-inch diameter rebar with a metal cap stamped 'Carl Anderson' (former Boone County Surveyor) was found marking the position clearly held as said northwest corner, northeast quarter, southeast quarter. This monument fit well with other monuments and relevant calls tied to the corner. For the purpose of establishing the east quarter corner of Section 25, the Anderson capped rebar was held as marking the quarter-quarter corner and the east quarter corner was established at the easterly prolongation of a line defined by several rebars found (Hause and Dodge caps) and an iron pipe found at the west edge of S.R. 39. The specific position of the corner was established at the intersection of this line with the southerly prolongation of the line connecting the northeast corner of Section 25 (see BCS Corner NW 200-000) and the rebar found marking Corner 2, as discussed above. It is noted that, although the plat of Northfield Village appears to treat the east-west line as a common, straight line, monuments found both east and west of the aforementioned Carl Anderson rebar indicate that the line has been treated bending slightly at the quarter-quarter corner.

The rebar found and held as marking Corner 2 was replaced with a new rebar, set in concrete, with metal cap stamped 'Boone County Surveyor' set flush with the adjoining ground on November 20, 2020. On the same day, a rebar with identical cap was set in concrete at the computed position of Corner 1. Rebars were set rather than Harrison monuments due to the presence of underground utilities. It is noted that the separation between the corners is 33.30 feet, 4.6 feet less than the computed average offset. The found monumentation is held as superior evidence to the computed offset.

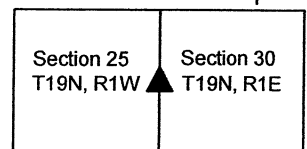


  
Kenneth E. Hedge, County Surveyor

  
James S. Swift, IN LS 20200054

December 9, 2020 Page 2 of 2

Center Township



# SECTION CORNER RECORD

# NW 150-100

## BOONE COUNTY SURVEYOR'S OFFICE

State Plane grid coordinates NAD83 (2011):

North: 1753526.74 East: 3119499.09 (U.S. survey feet)

Type of monument: Harrison, 4" disk 'Section Corner'

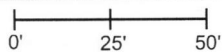
Depth: Flush with adjacent ground

Indiana tie card references:

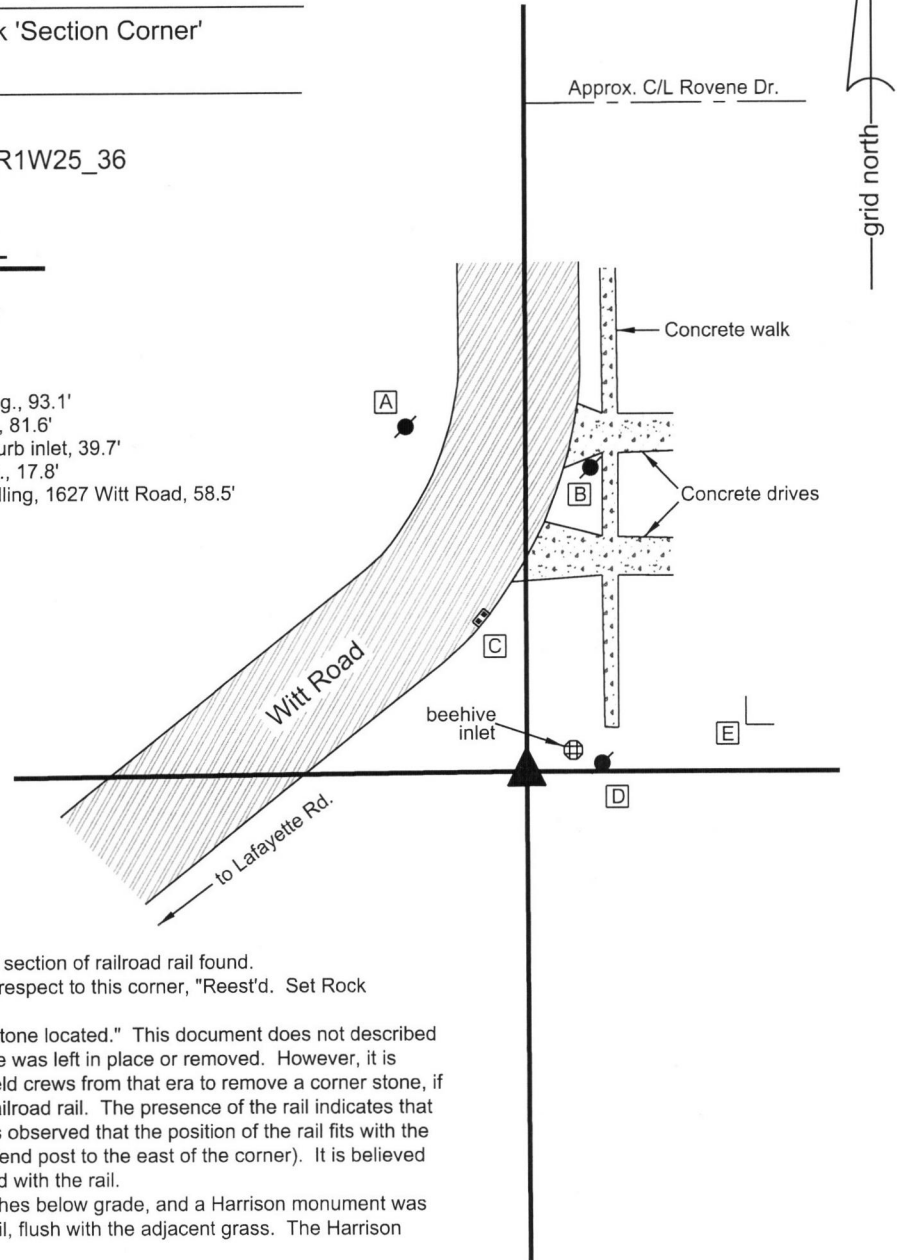
IN02\_T19NR1W26\_44 IN02\_T19NR1W25\_36

### CORNER WITNESS DETAIL

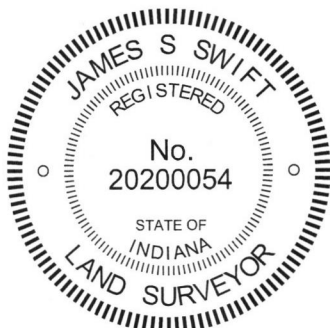
SCALE 1" = 50'



- A - Mag nail set in S.E. side power pole, 0.8' a.g., 93.1'
- B - Mag nail set in S. side power pole, 0.8' a.g., 81.6'
- C - Etched "+" in S.W. corner, top of casting, curb inlet, 39.7'
- D - Mag nail set in W. side power pole, 0.8' a.g., 17.8'
- E - S.W. corner, foundation, 1 story frame dwelling, 1627 Witt Road, 58.5'

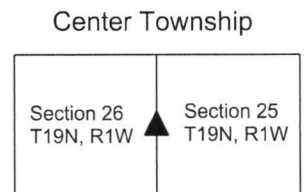


The Harrison monument was set over a vertical section of railroad rail found.  
 A BCS record dated April 29, 1875 states, with respect to this corner, "Reest'd. Set Rock 20x18x13 +."  
 A BCS tie card dated August 19, 1968 states "stone located." This document does not describe the stone nor does it describe whether the stone was left in place or removed. However, it is known that it was a common practice of BCS field crews from that era to remove a corner stone, if found, and replace it with a vertical section of railroad rail. The presence of the rail indicates that this practice was followed at this corner and it is observed that the position of the rail fits with the one remaining distance tie from the 1968 card (end post to the east of the corner). It is believed that the found stone was removed and replaced with the rail.  
 The rail was left in place, approximately five inches below grade, and a Harrison monument was broken off and set directly over the top of the rail, flush with the adjacent grass. The Harrison monument was set in October, 2015.  
 This corner was originally established as a wood post in 1822.



*Kenneth E. Hedge*  
 Kenneth E. Hedge, County Surveyor

*James S. Swift*  
 James S. Swift, IN LS 20200054  
 October 11, 2017



# SECTION CORNER RECORD

NW 200-000

## BOONE COUNTY SURVEYOR'S OFFICE

State Plane grid coordinates NAD83 (2011):

Corner 1: North: 1756158.94 East: 3124834.89 (U.S. survey feet)

Corner 2: North: 1756201.95 East: 3124834.87 (U.S. survey feet)

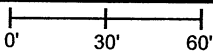
Monument: 5/8" diameter rebar, 30" long, with aluminum cap stamped 'Boone County Surveyor', 1 inch up (Corner 1), flush (Corner 2)

Indiana tie card references:

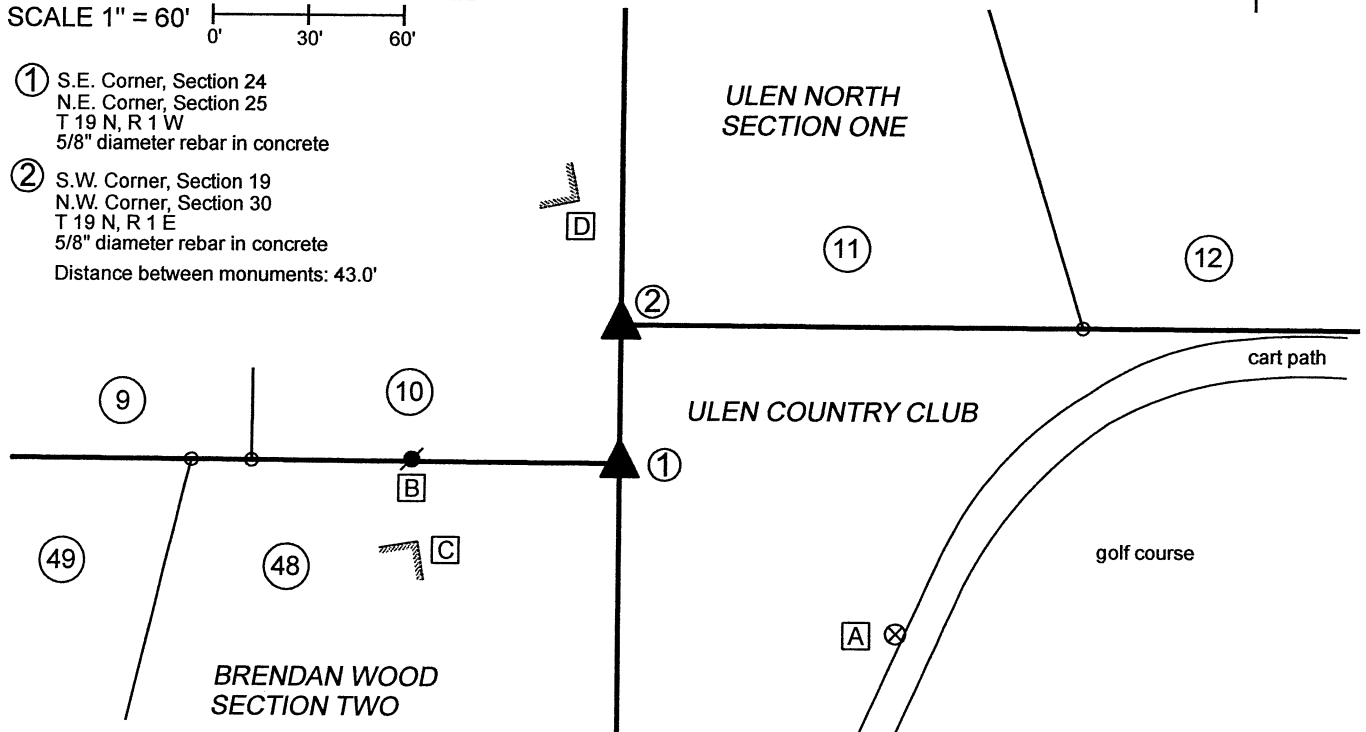
IN02\_T19NR1E19\_72 IN02\_T19NR1W24\_80

IN02\_T19NR1W25\_08 IN02\_T19NR1E30\_00

### CORNER WITNESS DETAIL

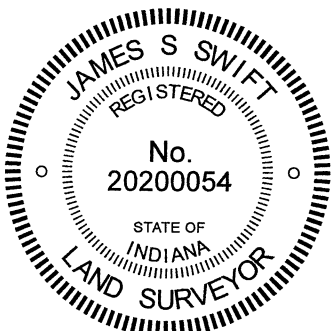
SCALE 1" = 60' 

- ① S.E. Corner, Section 24  
N.E. Corner, Section 25  
T 19 N, R 1 W  
5/8" diameter rebar in concrete
- ② S.W. Corner, Section 19  
N.W. Corner, Section 30  
T 19 N, R 1 E  
5/8" diameter rebar in concrete  
Distance between monuments: 43.0'



SEE PAGE 2 FOR WRITTEN REPORT

- A - Boone County witness mark, flush, 101.4' to corner 1, 129.1' to corner 2
- B - Mag nail set in N. side power pole, 2' a.g., 64.7' to corner 1, 77.1' to corner 2
- C - N.E. corner brick house, 2' a.g., 67.3' to corner 1, 92.3' to corner 2
- D - S.E. corner brick house, 2' a.g., 82.9' to corner 1, 41.1' to corner 2



*Kenneth E. Hedge*  
Kenneth E. Hedge, County Surveyor

*James S. Swift*  
James S. Swift, IN LS 20200054

Center Township

Section 24 T19N, R1W	Section 19 T19N, R1E
Section 25 T19N, R1W	Section 30 T19N, R1E

# SECTION CORNER RECORD

## BOONE COUNTY SURVEYOR'S OFFICE

NW 200-000

State Plane grid coordinates NAD83 (2011):

Corner 1: North: 1756158.94 East: 3124834.89 (U.S. survey feet)

Corner 2: North: 1756201.95 East: 3124834.87 (U.S. survey feet)

Monument: 5/8" diameter rebar, 30" long, with aluminum cap stamped 'Boone County Surveyor', 1 inch up (Corner 1), flush (Corner 2)

Indiana tie card references:

IN02\_T19NR1E19\_72 IN02\_T19NR1W24\_80

IN02\_T19NR1W25\_08 IN02\_T19NR1E30\_00

The rebars with metal caps at both corners were set with respect to other monuments and evidence found, as shown on the plats of the Brendan Wood and Ulen North subdivisions.

At Corner 1, two different monuments were found ostensibly marking the corner. The obvious monument, visible and above-ground, was a 5/8-inch rebar with a yellow plastic cap, markings illegible, protruding 4 inches out of the ground. The other monument was a 1/2-inch diameter rebar found 7 inches below grade. The 1/2 inch rebar was located 1.7 feet south on 0.4 feet west of the 5/8 inch rebar. At Corner 2, a 1/2-inch diameter rebar was found 4 inches below grade.

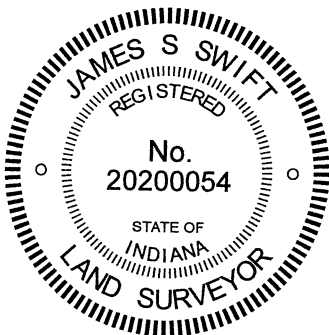
Corner 1 represents the northeast corner of Brendan Wood Second Section, as recorded in Plat Book 3, page 142 in the Office of the Boone County Recorder. This plat was certified by Robert Scherschel, Indiana LS No. 3907 on November 20, 1963. The adjoining plat to the north is Ulen North, Section 1, recorded in Plat Book 6, page 24 and certified by Gus G. Schulz, Indiana LS No. 10292 on August 24, 1977.

Corner 1 represents the southeast corner of Lot 10 in Ulen North and Corner 2 represents the southwest corner of Lot 11, being on the east line of Lot 10. It is noted that Ulen North straddles the section line and Second Principal Meridian, while Brendan Wood Second Addition is entirely in Section 25, T19N, R1W. The Ulen North plat shows both section corners, with Corner 2 shown as being 44.08 feet north of Corner 1. The found 1/2-inch diameter rebars are believed to mark the corners as they were set when Ulen North Section One was laid out or at the time of the re-plat of Lots 1 and 18, certified by Robert Hutchison, Indiana LS No. 10057 on June 4, 1979, as recorded in Plat Book 6, page 39. However, based on retracement of lot corners in both subdivisions, it appears Ulen North overlapped slightly onto the existing Brendan Wood lots. As retraced with respect to monuments found marking numerous lot corners, it also appears that the existing, visible 5/8-inch rebar with broken plastic cap was slightly north of the northeast corner of Brendan Wood Section 2 as originally laid out. Overall, approximately 0.4 foot uncertainty in all directions may be attributed to retraced position of the northeast corner of Brendan Wood Section 2. But no monuments found marking lot corners to the west indicated a position quite as far north as the existing, visible, 5/8-inch rebar. This monument is believed not to be original and also appears that it may have been moved at some point in the past. The cap appeared to have been smashed down onto the shaft of the rebar and the rebar was quite loose in the ground, being easily pulled by hand. The rebar was 20 inches long and had been protruding out of the ground. This was anything but a permanent monument, firmly fixed to the ground.

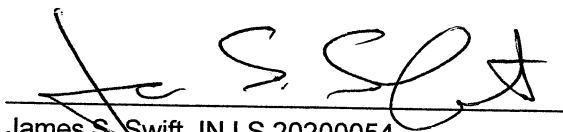
Based on the relative positions of other found monuments, the position of Corner 1 was established at platted distance (286.65 feet) north of a rebar with metal cap at the southeast corner of Lot 47, Brendan Wood Second addition, at the same easting as the found 5/8 inch rebar and 0.6 foot south of the position of the found 5/8-inch rebar. The east dimension of this position is slightly east of that which was computed with respect to monuments found marking lot corners to the west but slightly west of that which was computed with respect to monuments found marking lot corners to the south. As noted above, uncertainties of 0.4 foot in all directions may be attributed to the computed position. The 5/8-inch rebar was removed and a 30-inch length of 5/8-inch rebar was set in concrete at the computed position for the corner. The 1/2-inch diameter rebar was left in place, 0.4 foot west and 1.1 feet south of the corner.

The position of Corner 2 was established on the meridian line as defined by Corner 1 and a Harrison monument marking the east quarter corner of Section 24, T19N, R1W (seek BCS Corner NW-250-000), at the same northing as the found 1/2-inch rebar. This position falls 0.6 foot east of the 1/2-inch rebar. A 30-inch length of 5/8-inch rebar was set in concrete at this position. Both corners were set on November 20, 2020. Due to the presence of numerous underground utilities in the immediate vicinity of the corners, no substantial excavation was performed and Harrison monuments were not set.

It is noted that the closing offset distance reported by the original federal notes for T19N, R1E was 63 links or 41.58 feet. The offset shown on the plat of Ulen North Section 1 is 44.08 feet. The separation of the two corners as established herein is 43.0 feet.



  
Kenneth E. Hedge, County Surveyor

  
James S. Swift, IN LS 20200054

December 9, 2020 Page 2 of 2

Center Township

Section 24 T19N, R1W	Section 19 T19N, R1E
Section 25 T19N, R1W	Section 30 T19N, R1E

# SECTION CORNER RECORD

NW 200-050

## BOONE COUNTY SURVEYOR'S OFFICE

State Plane grid coordinates NAD83 (CORS96):

North: 1756172.41 East: 3122161.33 (U.S. survey feet)

Type of monument: Harrison, 4" disk 'Section Corner'

Depth: flush with adjacent ground

Indiana tie card references:

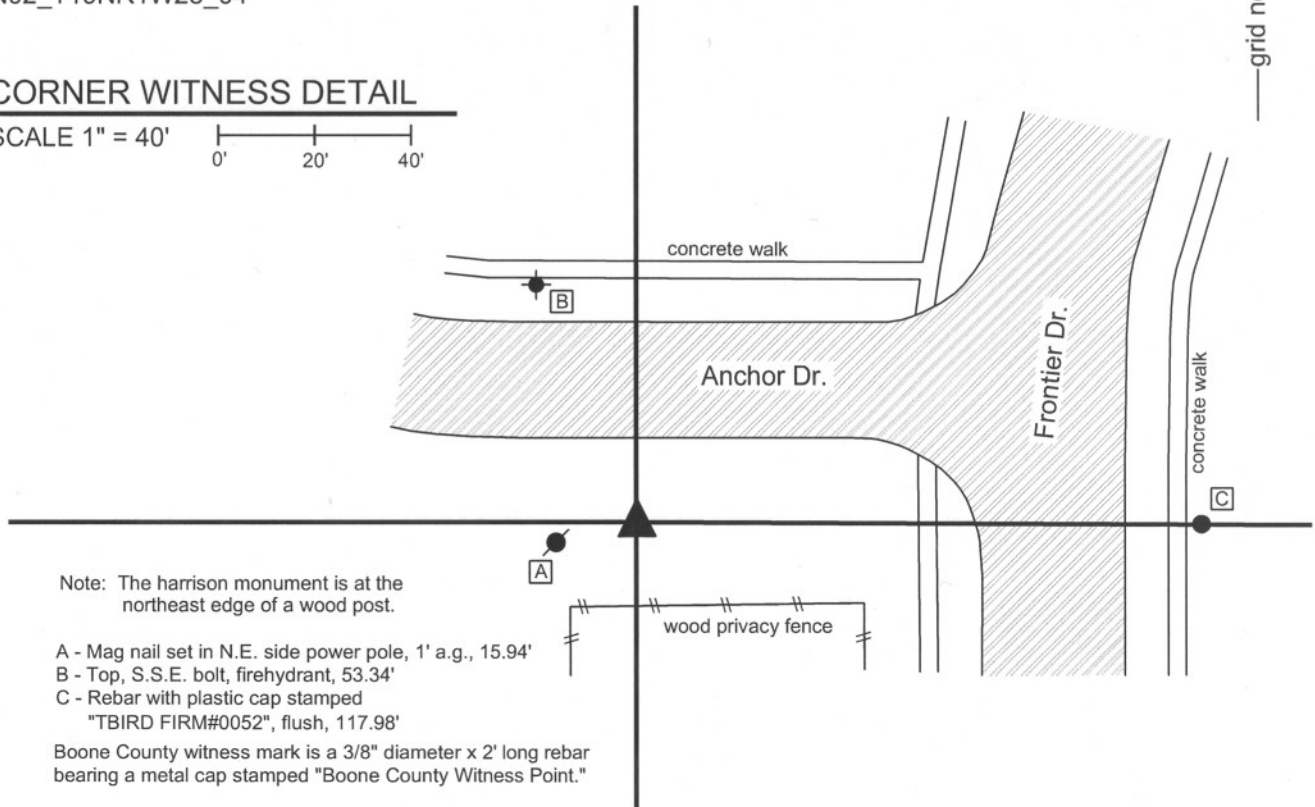
IN02\_T19NR1W24\_76

IN02\_T19NR1W25\_04



### CORNER WITNESS DETAIL

SCALE 1" = 40'



Note: The harrison monument is at the northeast edge of a wood post.

A - Mag nail set in N.E. side power pole, 1' a.g., 15.94'

B - Top, S.S.E. bolt, firehydrant, 53.34'

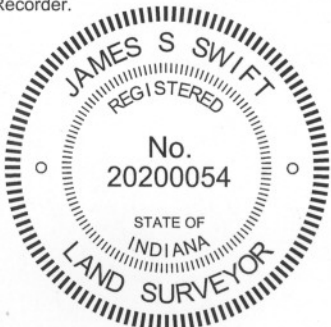
C - Rebar with plastic cap stamped

"TBIRD FIRM#0052", flush, 117.98'

Boone County witness mark is a 3/8" diameter x 2' long rebar bearing a metal cap stamped "Boone County Witness Point."

The harrison monument was set in place of a stone found.

A BCS record of June 26-28, 1859 states "Reest'd from stump of one original B.Tree (B Oak). Set." No recent BCS tie cards were found referencing this corner. The corner was excavated on May 18, 2010. Excavation was performed in cooperation with Clem Kuhns, LS, of T-Bird Design, Lafayette IN. Mr. Kuhns had performed extensive preliminary surveying and provided information which was used in determining the corner. Prior to excavation an old wood post was clearly visible and a stone was known to exist at the east edge of the wood post, approximately 6 inches deep. As found, the stone measured 16 inches N-S by 9 inches E-W by 9 inches tall. The widest part of the stone was at the north end and it appeared that the stone may previously have been vertical but was knocked over towards the south. The 1859 record does not describe the stone, but it is known from discovery at other section corners that it is most likely that the stone would have been set vertically with the most substantial part of the stone at the bottom. The most likely apparent position for the corner is the point near the north edge of the stone which represents what might have been the position of the stone as it would have stood vertically. Mr. Kuhns confirmed that this position fit well with record and combined survey dimensions to the center quarter corner to the north (See NW-250-050), local monumentation to the east and interior improvements and evidence of corners in the Shaker Square development. This position was held as the corner and the harrison monument was set at that position. The stone was removed. The stone is shown as being found and held as marking the corner on several private surveys, including a survey by Frank M. Hahn & Associates recorded in Survey Book 1, page 54 and a survey by the Schnieder Corporation recorded in Survey Book 3, pages 65-66, all in the Office of the Boone County Recorder.



*Kenneth E. Hedge*  
Kenneth E. Hedge, County Surveyor

*James S. Swift*  
James S. Swift, IN LS 20200054

Mach 30, 2012

Center Twp

Section 24  
T19N, R1W

Section 25  
T19N, R1W

PHOTOGRAPHIC DOCUMENTATION

Date of photography: May 18, 2010

The stone and the bottom of the post.  
View from the east.



The stone and the bottom of the post.  
View from above.



The stone and the post.



For details and documentation, refer to related sheet "Section Corner Record."