

SECTION CORNER RECORD

NW 200-600

BOONE COUNTY SURVEYOR'S OFFICE

State Plane grid coordinates NAD83 (2011): (U.S. survey feet)

Corner 1: North: 1756136.60 East: 3093113.15

Corner 2: North: 1756089.97 East: 3093113.17

Type of monument: Harrison, 4" disk 'Section Corner'

Depth: One inch below adjacent road surface

Indiana tie card references:

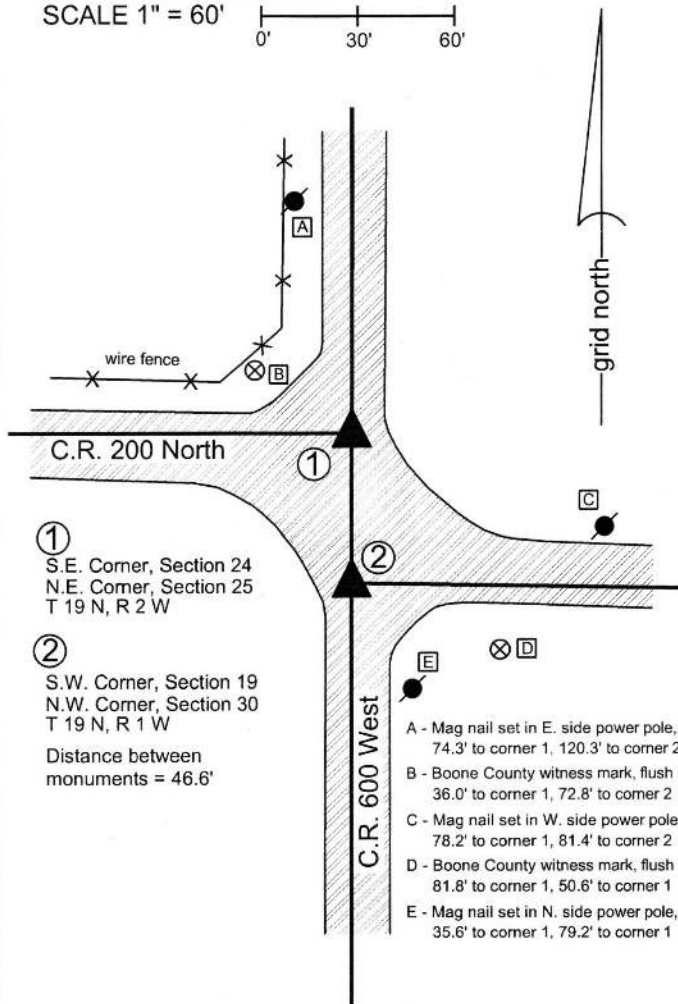
IN02_T19NR2W24_80 IN02_T19NR1W19_72

IN02_T19NR2W25_08 IN02_T19NR1W30_00

CORNER WITNESS DETAIL

SCALE 1" = 60'

0' 30' 60'



The Harrison monument at corner 1 was set over a stone found. The Harrison monument at corner 2 was set on the range line adjacent to a stone found.

A BCS record dated December 31, 1872 states, with respect to corner 1, Reestablished N.E. corner, set rock 16,12.8 +. One under it 6 1/2, 5 1/2, 4 +."

An undated BCS tie card, believed to date from June, 1974, states, with respect to corner 1, "No stone located."

A BCS record dated November 30, 1878, states, with respect to corner 2, "Reest'd 71 links S. of the lap corner. Set two limestones 12x11x3, lower, lies on side, + on top side. (Top) 18x8x4 on end + on top and a smaller one on each side. + on sides."

A BCS tie card dated June 1974 states, with respect to corner 2, "No stone."

Both corners were excavated on June 23, 2015. Prior to excavation, a railroad spike had been found in the vicinity of corner 1 and a vertical section of railroad rail had been found in the vicinity of corner 2. These two monuments were located at 43.8 feet apart. The record closing distance, originally recorded in 1829 and reaffirmed in 1878, of 71 links equates to approximately 46.9 feet.

Excavation at corner 1 revealed a railroad rail found directly below the railroad spike. Further excavation revealed a stone found at 22 inches deep. With 10 inches of the stone exposed, it measured 11.5 inches N-S by 8 inches E-W. The stone was embedded in the clay layer below the road, appeared to be vertical, and remained stable with the top 11 inches exposed. The stone had a distinct N-S ridge across the top with a discernable high point. No specific markings were observed on the stone, though it is a rough-surfaced rock and marks are hard to distinguish on such a stone. The top, high point of the stone was held as marking the corner and a Harrison monument was set at this point. The railroad spike and railroad rail, both removed during excavation, had been 0.2 foot south and 0.8 foot east of the point held as the corner.

Excavation at corner 2 revealed several stones found. The top stone was found at 22 inches deep. This stone appeared to be of limestone material and appeared to be leaning slightly toward the north. Stood vertically, the stone had a distinct etched "+" mark on the top. As stood vertically, the stone measured 18 inches tall by 8 inches N-S by 4 inches E-W. Two smaller rocks were found on the east and west sides, respectively, of the larger rock. All three stones were removed and another stone was found at 40 inches deep. This stone appeared to be horizontal and had a distinct etched "+" mark on the top of the flat rock. This set of four stones was accepted as being the same set of stones called for in the 1878 record. The etched mark on the lower stone was found to be 46.6 feet south of the top, center of the stone at corner 1 and approximately 0.4 foot west of the range line as defined by the positions of corner 1 and the standard corner approximately 1/2 mile south. Corner 2 was established on the range line at the same north-south dimension as the etched "+" mark on the lower stone. A Harrison monument was set at this position. The railroad rail, removed during excavation, had been 1.5 feet east and 2.6 feet north of the final position for corner 2. An iron pipe was also found 1 foot south of the rail. This monument was also removed during excavation. Corner 1 was originally established as a wood post in 1819 and corner 2 was originally established as a wood post in 1829.



Kenneth E. Hedge
Kenneth E. Hedge, County Surveyor

James S. Swift
James S. Swift, IN LS 20200054
March 24, 2016

Jefferson Township

Section 24 T19N, R2W	Section 19 T19N, R1W
Section 25 T19N, R2W	Section 30 T19N, R1W

PHOTOGRAPHIC DOCUMENTATION

Date of photography: June 23, 2015

The stone at the standard corner (Corner 1) as it was originally exposed.



The first stone found at the closing corner (Corner 2). Note the mark on top.



The situation at the closing corner. Three stones removed, the bottom stone left in place.



View of the standard corner. View from the East, looking across the stone and west along County Road 200 South.



Another view of the standard corner, including the removed stone and the found iron pipe.



For details and documentation, refer to related sheet "Section Corner Record."

SECTION CORNER RECORD

BOONE COUNTY SURVEYOR'S OFFICE

NW 200-650

State Plane grid coordinates NAD83 (2011):

North: 1756138.26 East: 3090466.31 (U.S. survey feet)

Type of monument: Harrison, 4" disk 'Section Corner'

Depth: One inch below adjacent road surface

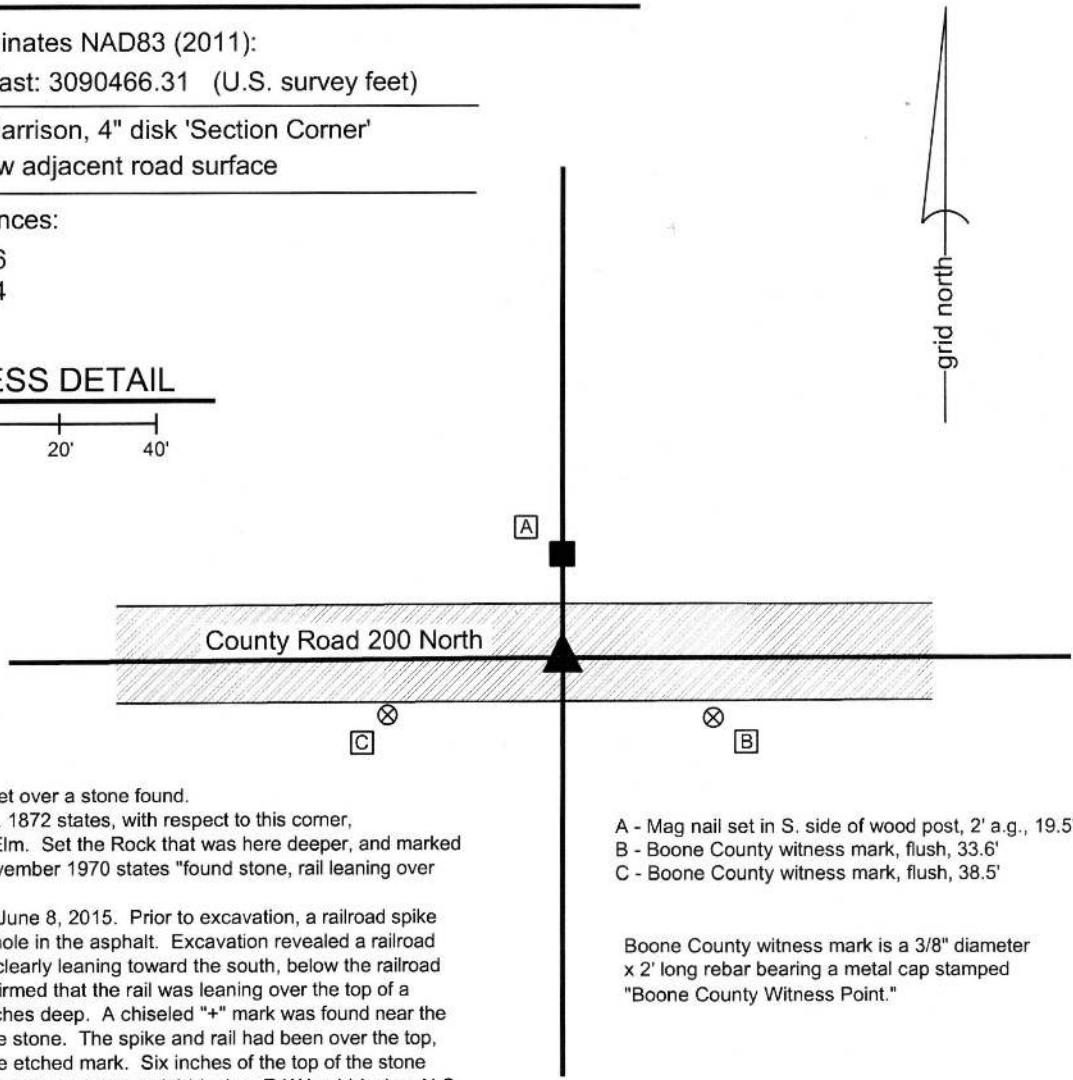

Indiana tie card references:

IN02_T19NR2W24_76

IN02_T19NR2W25_04

CORNER WITNESS DETAIL

SCALE 1" = 40'



The Harrison monument was set over a stone found.

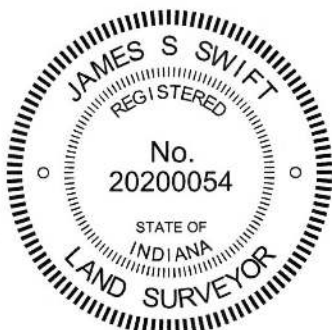
A BCS record of December 31, 1872 states, with respect to this corner, "Reestablished from Roots of Elm. Set the Rock that was here deeper, and marked it +." A BCS tie card dated November 1970 states "found stone, rail leaning over stone."

This corner was excavated on June 8, 2015. Prior to excavation, a railroad spike was found one inch deep in a hole in the asphalt. Excavation revealed a railroad rail found, partially vertical but clearly leaning toward the south, below the railroad spike. Further excavation confirmed that the rail was leaning over the top of a stone. The stone was at 19 inches deep. A chiseled "+" mark was found near the southeast edge of the top of the stone. The spike and rail had been over the top, center of the stone, not over the etched mark. Six inches of the top of the stone were exposed, at which point the stone measured 14 inches E-W by 11 inches N-S. The stone appeared to that it was likely to be larger in all dimensions than that part measured and exposed. The stone was embedded in the clay layer below the road bed, protruding 6 inches into the bottom of the road bed. The spike and rail were both removed and the stone was left in place. A Harrison monument was set over the top, center of the stone in the same position as the railroad spike found prior to excavation.

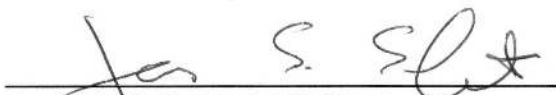
This corner was originally established as a wood post in 1829.

- A - Mag nail set in S. side of wood post, 2' a.g., 19.5'
- B - Boone County witness mark, flush, 33.6'
- C - Boone County witness mark, flush, 38.5'

Boone County witness mark is a 3/8" diameter x 2' long rebar bearing a metal cap stamped "Boone County Witness Point."




Kenneth E. Hedge, County Surveyor


James S. Swift, IN LS 20200054

March 24, 2016

Jefferson Township

Section 24
T19N, R2W

Section 25
T19N, R2W

PHOTOGRAPHIC DOCUMENTATION

Date of photography: June 8, 2015

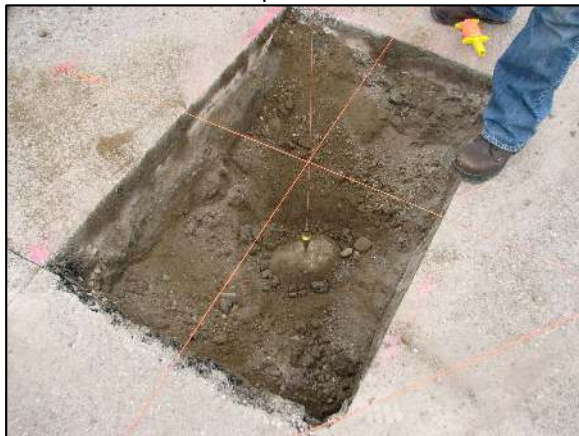
The top of the railroad rail found leaning over the stone.



The railroad rail being removed from the hole.



Straddle strings and a plumb bob used to demonstrate the position of the top of the rail as found with respect to the stone.



View of the stone as it is situated in within County Road 200 North.



View of the stone from above.



For details and documentation, refer to related sheet "Section Corner Record."

SECTION CORNER RECORD

NW 200-700

BOONE COUNTY SURVEYOR'S OFFICE

State Plane grid coordinates NAD83 (2011):
North: 1756122.37 East: 3087805.07 (U.S. survey feet)

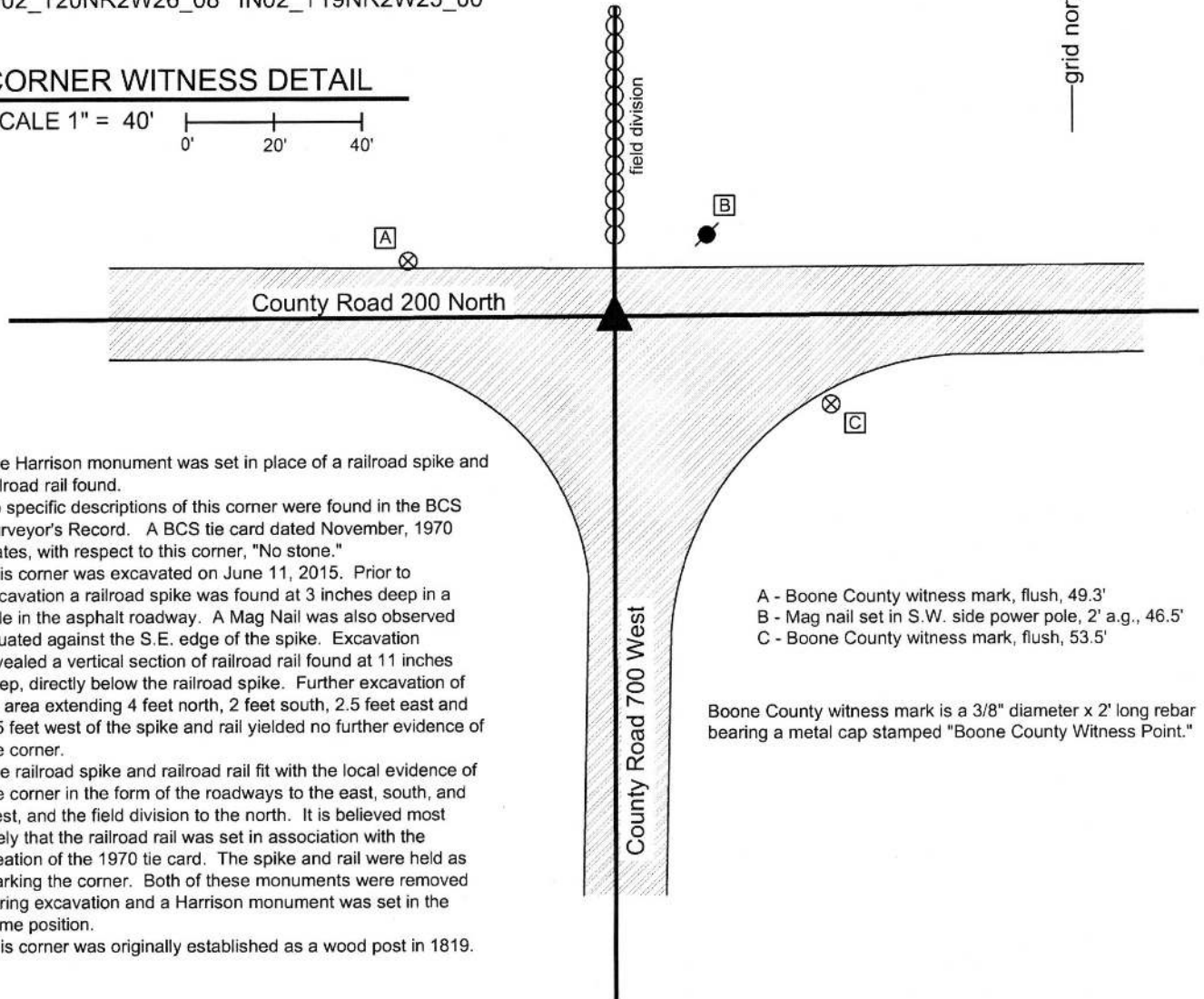
Type of monument: Harrison, 4" disk 'Section Corner'
Depth: One inch below adjacent road surface

Indiana tie card references:
IN02_T19NR2W23_80 IN02_T19NR2W24_72
IN02_T20NR2W26_08 IN02_T19NR2W25_00



CORNER WITNESS DETAIL

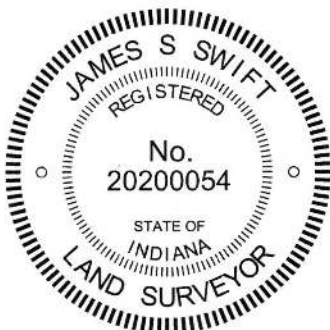
SCALE 1" = 40'
0' 20' 40'



The Harrison monument was set in place of a railroad spike and railroad rail found.
No specific descriptions of this corner were found in the BCS Surveyor's Record. A BCS tie card dated November, 1970 states, with respect to this corner, "No stone."
This corner was excavated on June 11, 2015. Prior to excavation a railroad spike was found at 3 inches deep in a hole in the asphalt roadway. A Mag Nail was also observed situated against the S.E. edge of the spike. Excavation revealed a vertical section of railroad rail found at 11 inches deep, directly below the railroad spike. Further excavation of an area extending 4 feet north, 2 feet south, 2.5 feet east and 2.5 feet west of the spike and rail yielded no further evidence of the corner.
The railroad spike and railroad rail fit with the local evidence of the corner in the form of the roadways to the east, south, and west, and the field division to the north. It is believed most likely that the railroad rail was set in association with the creation of the 1970 tie card. The spike and rail were held as marking the corner. Both of these monuments were removed during excavation and a Harrison monument was set in the same position.
This corner was originally established as a wood post in 1819.

- A - Boone County witness mark, flush, 49.3'
- B - Mag nail set in S.W. side power pole, 2' a.g., 46.5'
- C - Boone County witness mark, flush, 53.5'

Boone County witness mark is a 3/8" diameter x 2' long rebar bearing a metal cap stamped "Boone County Witness Point."



Kenneth E. Hedge
Kenneth E. Hedge, County Surveyor

James S. Swift
James S. Swift, IN LS 20200054
March 24, 2015

Jefferson Township

Section 23 T19N, R2W	Section 24 T19N, R2W
Section 26 T19N, R2W	Section 25 T19N, R2W

SECTION CORNER RECORD

NW 250-700

BOONE COUNTY SURVEYOR'S OFFICE

State Plane grid coordinates NAD83 (2011):

North: 1758789.74 East: 3087838.51 (U.S. survey feet)

Type of monument: Harrison, 4" disk 'Section Corner'

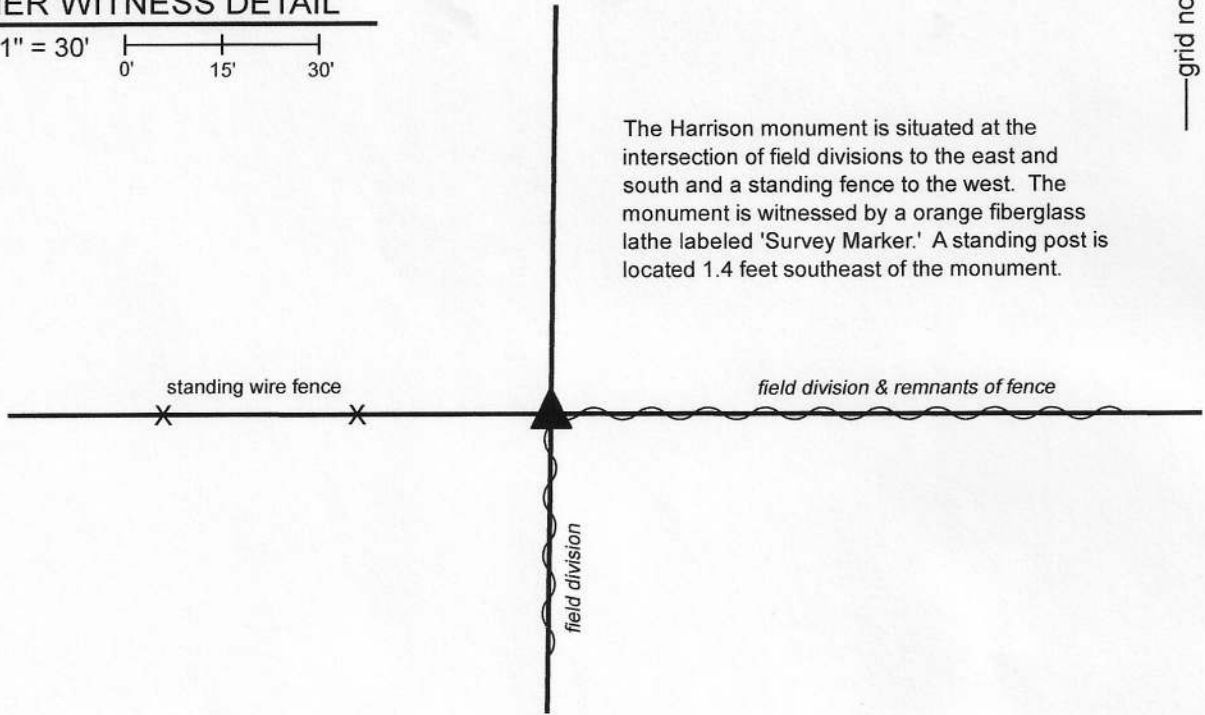
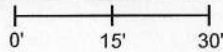
Depth: Three inches above surrounding ground

Indiana tie card references:

IN02_T19NR2W23_44 IN02_T19NR2W24_36

CORNER WITNESS DETAIL

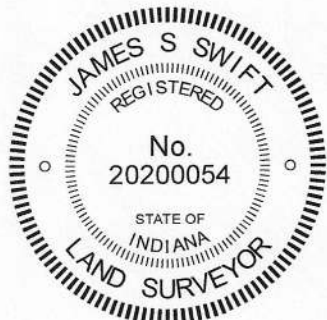
SCALE 1" = 30'



The Harrison monument was set in place of the base of a wood post found.

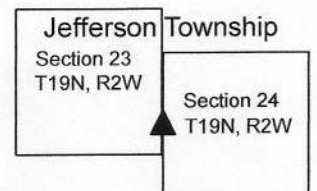
No specific descriptions of this corner were found in the BCS Surveyor's Record beyond the original establishment of the corner as a wood post in 1829. No recent BCS tie cards nor surveys recorded in the Boone County Recorder's Office were found referencing this corner.

Excavation was performed at this corner on April 6, 2020. Prior to excavation, two wood posts were found. One of the posts was found standing, the other lying on the ground. In April, 2015, the post on the ground had been found and located as standing with fencing to the east and west attached. The standing post had fencing cut-off toward the south. Excavation in the immediate vicinity of the two posts revealed numerous rocks and rubble of various sizes, none of which appeared to be have been purposely set to mark the corner. Remnants of the base of the fallen post were found at 8 inches deep. This post appeared to be of locust material. The positions of the two posts worked well with the relative positions of evidence of the corners 1/2 mile east (approximate intersection of fences immediately to the north and west) and 1/4 mile east (center of the north-south road, in line with fencing to the west). The fallen post appeared to be older and had been observed to be the primary post when both posts were standing in April 2015. The older post was accepted as the best available evidence of the corner and was held as marking the corner. The remnants of the base of the post were left in the ground, partially encased in concrete and Harrison monument was set directly over the base of post. The standing post was left in place, 1.4 feet southeast of the monument.



Kenneth E. Hedge
Kenneth E. Hedge, County Surveyor

James S. Swift
James S. Swift, IN LS 20200054
April 29, 2020



SECTION CORNER RECORD

NW 300-700

BOONE COUNTY SURVEYOR'S OFFICE

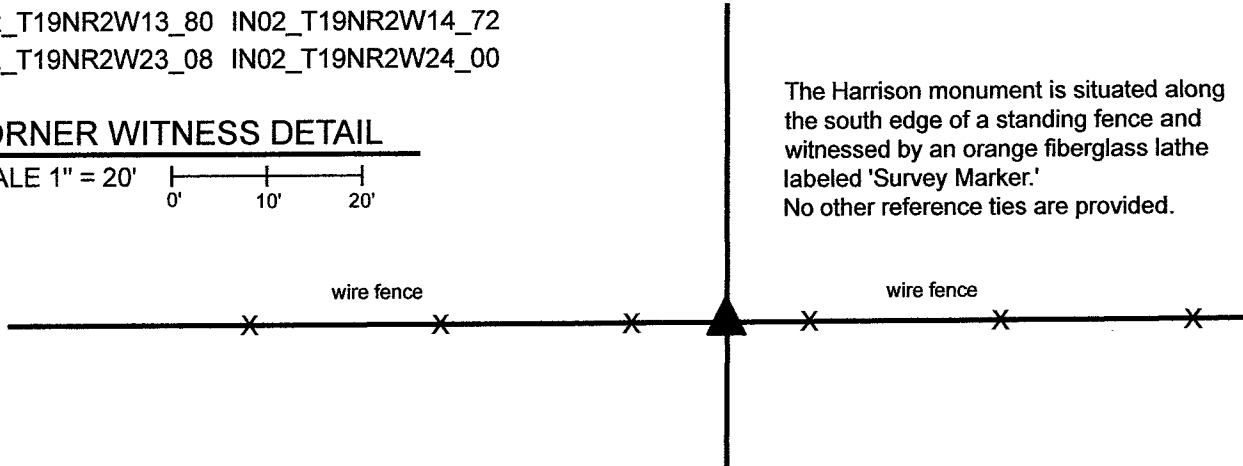
State Plane grid coordinates NAD83 (2011):
North: 1761442.59 East: 3087848.87 (U.S. survey feet)

Type of monument: Harrison, 4" disk 'Section Corner'
Depth: Three inches above surrounding ground

Indiana tie card references:
IN02_T19NR2W13_80 IN02_T19NR2W14_72
IN02_T19NR2W23_08 IN02_T19NR2W24_00

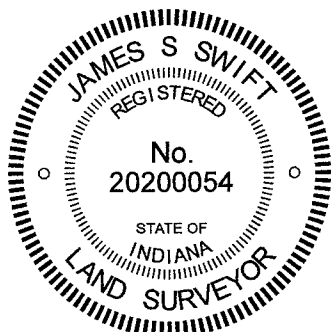
CORNER WITNESS DETAIL

SCALE 1" = 20'
0' 10' 20'



The Harrison monument was set in place of numerous small rocks found indicating the position of a previously occupied corner. No specific descriptions of this corner were found in the BCS Surveyor's Record beyond the original establishment of the corner as a wood post in 1829. Neither recent BCS tie cards nor surveys recorded in the Boone County Recorder's Office were found referencing the corner. The Harrison Minor Plat, defining land in the east half of the northwest quarter of Section 24, does not reference this corner.

As noted with the documentation for the north quarter corner of Section 23 (see BCS Corner NW 700-350), evidence of the section corners, quarter corners and quarter-quarter corners do not align well in this vicinity. Reconnaissance was first performed for this corner in 2015. No readily visible evidence of this corner was observed on first inspection other than the standing east-west fence. The corner was studied much more closely in 2020. Thorough analysis of the relative positions of the various available evidence indicates that an approach to discovering the position of this corner with respect to the quarter and quarter-quarter corners to the east west yields uncertain results. However, it was observed that substantial evidence of the occupied lines which represent the west line of the east half of the northeast quarter of Section 23 (standing fence between ancient corner posts) and the east line of the west half of the northwest quarter of Section 24 (existing roadway of County Road 675 West) is present. It was further observed that this evidence defines lines which are nearly parallel with each other. For purposes of searching for evidence of the subject corner, an approximate position for the corner was established with respect to these parallel lines, as anchored on the west quarter corner of Section 24 (see BCS Corner NW 250-700). Careful probing and digging in the vicinity of this approximate position revealed that generally, very few rocks are located in the ground along the east-west fence, but that in one specific position, numerous small rocks were clustered together at depths between flush with the surface and up to 18 inches deep. This cluster of small rocks was centered on a position 2 feet west of the approximate position for the corner computed with respect to the evidence of the aforementioned parallel lines and west quarter corner of Section 24. This locus of rocks did not appear to be natural and did appear to represent evidence of a previously occupied corner, as it has been observed at numerous other corners throughout the county that rocks, large and small, are often clustered about a corner post. None of the found rocks appeared to represent a stone purposely set to mark the corner. Rather, the congregation of rocks appeared to represent evidence of a previously occupied corner. Given the lack of reference to this corner in deeds or surveys and given the harmony of this position with the best available evidence of older lines in the area as discussed above, the grouping of small rocks was accepted as the best available evidence of the original position of the corner. A Harrison monument was set at the center of the area defined by the found rocks on April 26, 2021. Similar to what is stated with the documentation for the north quarter corner of Section 23 (see BCS Corner NW 300-750), it is recommended that future surveyors be aware that the evidence of the section, quarter and quarter-quarter corners does not align well in this area, the east-west lines zig-zag substantially, and that holding computed midpoints for quarter-quarter corners will not result in positions which work with otherwise reliable evidence of the quarter-quarter corners to the east and west of this corner. Sensible, professional judgement should be applied to establishing the position of quarter-quarter corners in this area.



Kenneth E. Hedge
Kenneth E. Hedge, County Surveyor

James S. Swift
James S. Swift, IN LS 20200054

May 11, 2021

Jefferson Township

Section 14 T19N, R2W	Section 13 T19N, R2W
Section 23 T19N, R2W	Section 24 T19N, R2W