

SECTION CORNER RECORD

NW 200-000

BOONE COUNTY SURVEYOR'S OFFICE

State Plane grid coordinates NAD83 (2011):

Corner 1: North: 1756158.94 East: 3124834.89 (U.S. survey feet)

Corner 2: North: 1756201.95 East: 3124834.87 (U.S. survey feet)

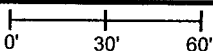
Monument: 5/8" diameter rebar, 30" long, with aluminum cap stamped 'Boone County Surveyor', 1 inch up (Corner 1), flush (Corner 2)

Indiana tie card references:

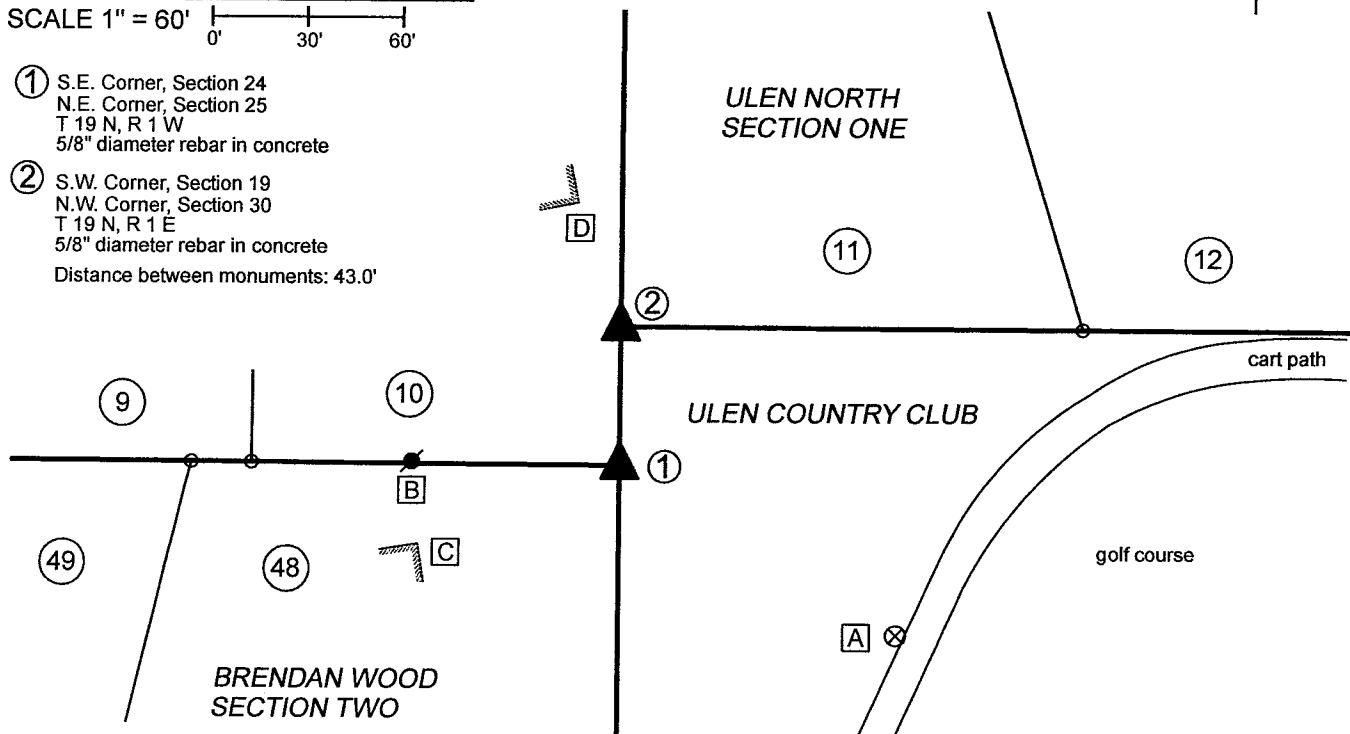
IN02_T19NR1E19_72 IN02_T19NR1W24_80

IN02_T19NR1W25_08 IN02_T19NR1E30_00

CORNER WITNESS DETAIL

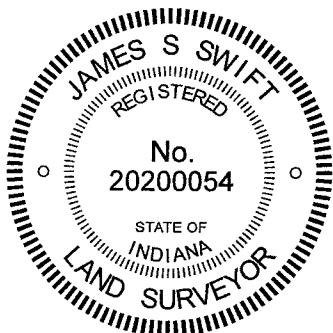
SCALE 1" = 60' 

- ① S.E. Corner, Section 24
N.E. Corner, Section 25
T 19 N, R 1 W
5/8" diameter rebar in concrete
- ② S.W. Corner, Section 19
N.W. Corner, Section 30
T 19 N, R 1 E
5/8" diameter rebar in concrete
Distance between monuments: 43.0'



SEE PAGE 2 FOR WRITTEN REPORT

- A - Boone County witness mark, flush, 101.4' to corner 1, 129.1' to corner 2
- B - Mag nail set in N. side power pole, 2' a.g., 64.7' to corner 1, 77.1' to corner 2
- C - N.E. corner brick house, 2' a.g., 67.3' to corner 1, 92.3' to corner 2
- D - S.E. corner brick house, 2' a.g., 82.9' to corner 1, 41.1' to corner 2



Kenneth E. Hedge
Kenneth E. Hedge, County Surveyor

James S. Swift
James S. Swift, IN LS 20200054

December 9, 2020 Page 1 of 2

Center Township

Section 24 T19N, R1W	Section 19 T19N, R1E
Section 25 T19N, R1W	Section 30 T19N, R1E

SECTION CORNER RECORD

NW 200-000

BOONE COUNTY SURVEYOR'S OFFICE

State Plane grid coordinates NAD83 (2011):

Corner 1: North: 1756158.94 East: 3124834.89 (U.S. survey feet)

Corner 2: North: 1756201.95 East: 3124834.87 (U.S. survey feet)

Monument: 5/8" diameter rebar, 30" long, with aluminum cap stamped 'Boone County Surveyor', 1 inch up (Corner 1), flush (Corner 2)

Indiana tie card references:

IN02_T19NR1E19_72 IN02_T19NR1W24_80

IN02_T19NR1W25_08 IN02_T19NR1E30_00

The rebars with metal caps at both corners were set with respect to other monuments and evidence found, as shown on the plats of the Brendan Wood and Ulen North subdivisions.

At Corner 1, two different monuments were found ostensibly marking the corner. The obvious monument, visible and above-ground, was a 5/8-inch rebar with a yellow plastic cap, markings illegible, protruding 4 inches out of the ground. The other monument was a 1/2-inch diameter rebar found 7 inches below grade. The 1/2 inch rebar was located 1.7 feet south on 0.4 feet west of the 5/8 inch rebar. At Corner 2, a 1/2-inch diameter rebar was found 4 inches below grade.

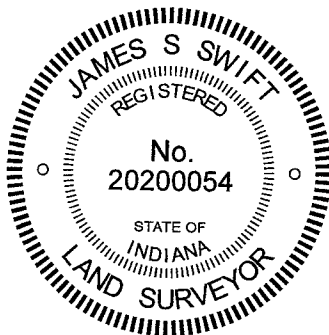
Corner 1 represents the northeast corner of Brendan Wood Second Section, as recorded in Plat Book 3, page 142 in the Office of the Boone County Recorder. This plat was certified by Robert Scherschel, Indiana LS No. 3907 on November 20, 1963. The adjoining plat to the north is Ulen North, Section 1, recorded in Plat Book 6, page 24 and certified by Gus G. Schulz, Indiana LS No. 10292 on August 24, 1977.

Corner 1 represents the southeast corner of Lot 10 in Ulen North and Corner 2 represents the southwest corner of Lot 11, being on the east line of Lot 10. It is noted that Ulen North straddles the section line and Second Principal Meridian, while Brendan Wood Second Addition is entirely in Section 25, T19N, R1W. The Ulen North plat shows both section corners, with Corner 2 shown as being 44.08 feet north of Corner 1. The found 1/2-inch diameter rebars are believed to mark the corners as they were set when Ulen North Section One was laid out or at the time of the re-plot of Lots 1 and 18, certified by Robert Hutchison, Indiana LS No. 10057 on June 4, 1979, as recorded in Plat Book 6, page 39. However, based on retracement of lot corners in both subdivisions, it appears Ulen North overlapped slightly onto the existing Brendan Wood lots. As retraced with respect to monuments found marking numerous lot corners, it also appears that the existing, visible 5/8-inch rebar with broken plastic cap was slightly north of the northeast corner of Brendan Wood Section 2 as originally laid out. Overall, approximately 0.4 foot uncertainty in all directions may be attributed to retraced position of the northeast corner of Brendan Wood Section 2. But no monuments found marking lot corners to the west indicated a position quite as far north as the existing, visible, 5/8-inch rebar. This monument is believed not to be original and also appears that it may have been moved at some point in the past. The cap appeared to have been smashed down onto the shaft of the rebar and the rebar was quite loose in the ground, being easily pulled by hand. The rebar was 20 inches long and had been protruding out of the ground. This was anything but a permanent monument, firmly fixed to the ground.

Based on the relative positions of other found monuments, the position of Corner 1 was established at platted distance (286.65 feet) north of a rebar with metal cap at the southeast corner of Lot 47, Brendan Wood Second addition, at the same easting as the found 5/8 inch rebar and 0.6 foot south of the position of the found 5/8-inch rebar. The east dimension of this position is slightly east of that which was computed with respect to monuments found marking lot corners to the west but slightly west of that which was computed with respect to monuments found marking lot corners to the south. As noted above, uncertainties of 0.4 foot in all directions may be attributed to the computed position. The 5/8-inch rebar was removed and a 30-inch length of 5/8-inch rebar was set in concrete at the computed position for the corner. The 1/2-inch diameter rebar was left in place, 0.4 foot west and 1.1 feet south of the corner.

The position of Corner 2 was established on the meridian line as defined by Corner 1 and a Harrison monument marking the east quarter corner of Section 24, T19N, R1W (seek BCS Corner NW-250-000), at the same northing as the found 1/2-inch rebar. This position falls 0.6 foot east of the 1/2-inch rebar. A 30-inch length of 5/8-inch rebar was set in concrete at this position. Both corners were set on November 20, 2020. Due to the presence of numerous underground utilities in the immediate vicinity of the corners, no substantial excavation was performed and Harrison monuments were not set.

It is noted that the closing offset distance reported by the original federal notes for T19N, R1E was 63 links or 41.58 feet. The offset shown on the plat of Ulen North Section 1 is 44.08 feet. The separation of the two corners as established herein is 43.0 feet.



Kenneth E. Hedge
Kenneth E. Hedge, County Surveyor

James S. Swift
James S. Swift, IN LS 20200054

December 9, 2020 Page 2 of 2

Center Township

Section 24 T19N, R1W	Section 19 T19N, R1E
Section 25 T19N, R1W	Section 30 T19N, R1E

SECTION CORNER RECORD

NW 200-050

BOONE COUNTY SURVEYOR'S OFFICE

State Plane grid coordinates NAD83 (CORS96):

North: 1756172.41 East: 3122161.33 (U.S. survey feet)

Type of monument: Harrison, 4" disk 'Section Corner'

Depth: flush with adjacent ground

Indiana tie card references:

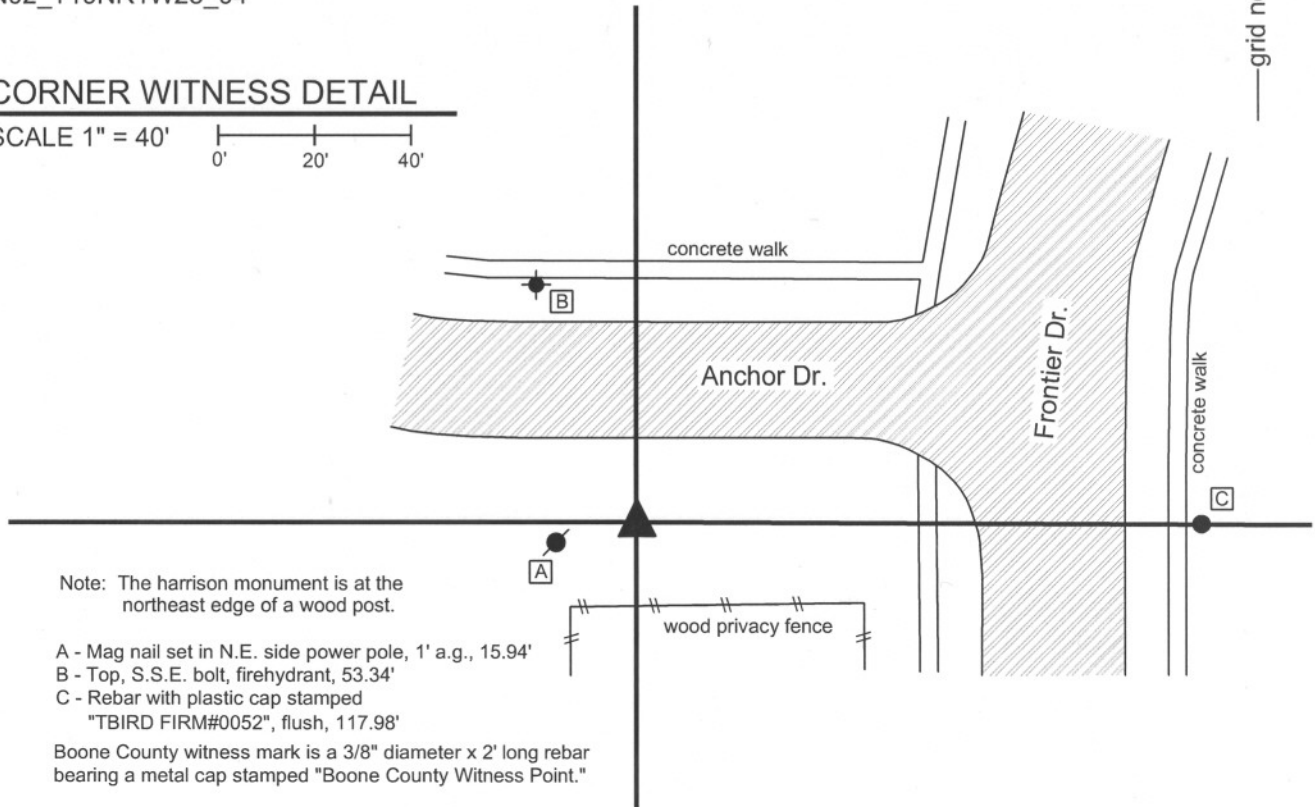
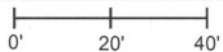
IN02_T19NR1W24_76

IN02_T19NR1W25_04



CORNER WITNESS DETAIL

SCALE 1" = 40'



Note: The harrison monument is at the northeast edge of a wood post.

A - Mag nail set in N.E. side power pole, 1' a.g., 15.94'

B - Top, S.S.E. bolt, firehydrant, 53.34'

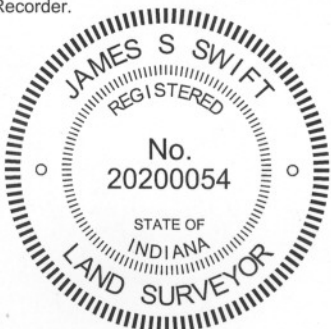
C - Rebar with plastic cap stamped

"TBIRD FIRM#0052", flush, 117.98'

Boone County witness mark is a 3/8" diameter x 2' long rebar bearing a metal cap stamped "Boone County Witness Point."

The harrison monument was set in place of a stone found.

A BCS record of June 26-28, 1859 states "Reest'd from stump of one original B.Tree (B Oak). Set." No recent BCS tie cards were found referencing this corner. The corner was excavated on May 18, 2010. Excavation was performed in cooperation with Clem Kuhns, LS, of T-Bird Design, Lafayette IN. Mr. Kuhns had performed extensive preliminary surveying and provided information which was used in determining the corner. Prior to excavation an old wood post was clearly visible and a stone was known to exist at the east edge of the wood post, approximately 6 inches deep. As found, the stone measured 16 inches N-S by 9 inches E-W by 9 inches tall. The widest part of the stone was at the north end and it appeared that the stone may previously have been vertical but was knocked over towards the south. The 1859 record does not describe the stone, but it is known from discovery at other section corners that it is most likely that the stone would have been set vertically with the most substantial part of the stone at the bottom. The most likely apparent position for the corner is the point near the north edge of the stone which represents what might have been the position of the stone as it would have stood vertically. Mr. Kuhns confirmed that this position fit well with record and combined survey dimensions to the center quarter corner to the north (See NW-250-050), local monumentation to the east and interior improvements and evidence of corners in the Shaker Square development. This position was held as the corner and the harrison monument was set at that position. The stone was removed. The stone is shown as being found and held as marking the corner on several private surveys, including a survey by Frank M. Hahn & Associates recorded in Survey Book 1, page 54 and a survey by the Schnieder Corporation recorded in Survey Book 3, pages 65-66, all in the Office of the Boone County Recorder.



Kenneth E. Hedge
Kenneth E. Hedge, County Surveyor

James S. Swift
James S. Swift, IN LS 20200054

Mach 30, 2012

Center Twp

Section 24
T19N, R1W

Section 25
T19N, R1W

PHOTOGRAPHIC DOCUMENTATION

Date of photography: May 18, 2010

The stone and the bottom of the post.
View from the east.



The stone and the bottom of the post.
View from above.



The stone and the post.



For details and documentation, refer to related sheet "Section Corner Record."

SECTION CORNER RECORD

BOONE COUNTY SURVEYOR'S OFFICE

NW 250-000

State Plane grid coordinates NAD83 (2011):

Corner 1: North: 1758805.04 East: 3124833.41 (U.S. survey feet)

Corner 2: North: 1758856.43 East: 3124833.55 (U.S. survey feet)

Type of monuments: Harrison, 4" disk 'Section Corner'

Depth: flush with adjacent ground

Indiana tie card references:

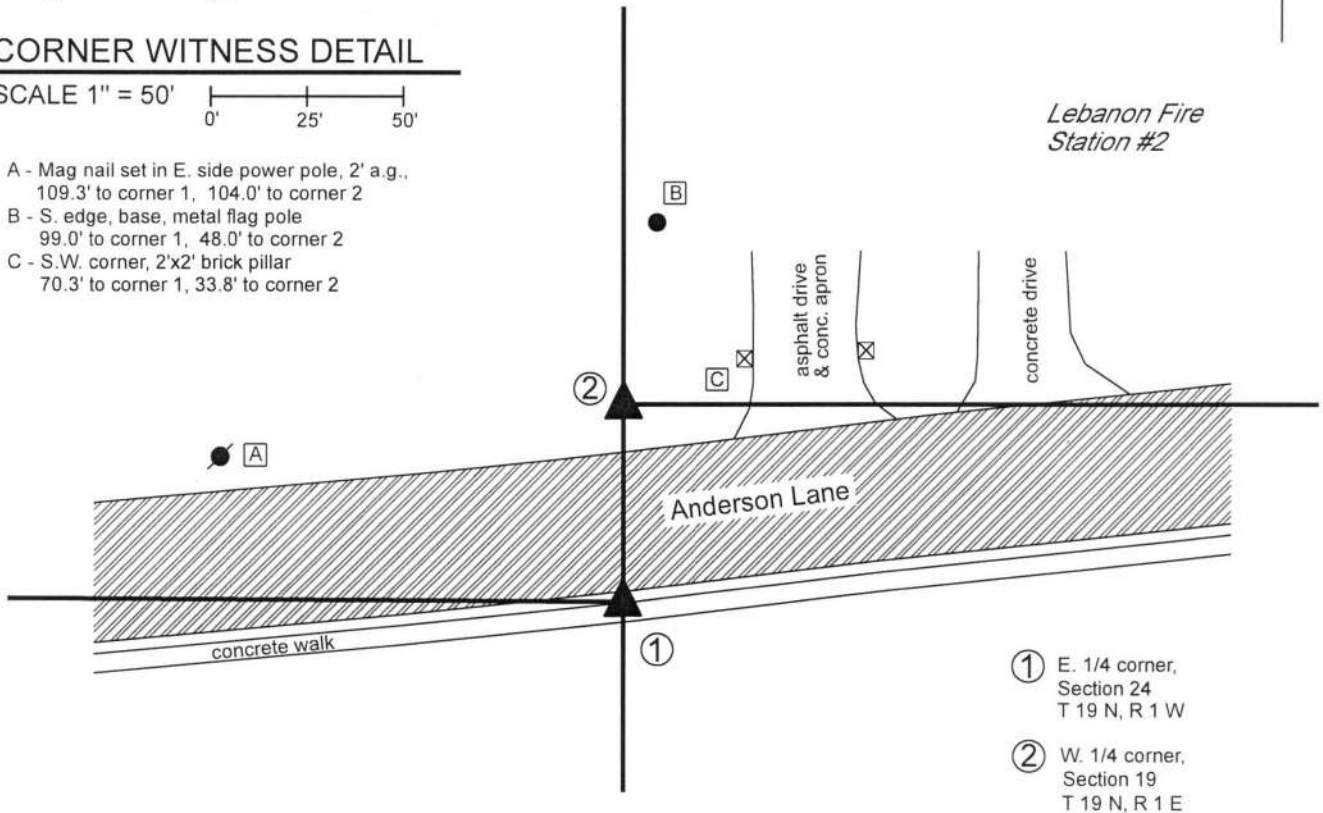
IN02_T19NR1E19_36

IN02_T19NR1W24_44

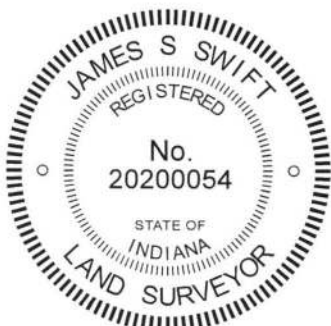
CORNER WITNESS DETAIL

SCALE 1" = 50'

- A - Mag nail set in E. side power pole, 2' a.g.,
109.3' to corner 1, 104.0' to corner 2
- B - S. edge, base, metal flag pole
99.0' to corner 1, 48.0' to corner 2
- C - S.W. corner, 2'x2' brick pillar
70.3' to corner 1, 33.8' to corner 2



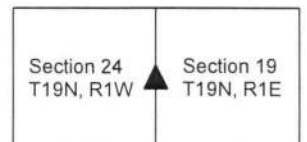
The Harrison monuments are shown as marking the corners on BCS tie cards dated August 16, 2005. The monuments were found in good condition, set in a stable manner in concrete in an area of significant fill and obvious previous disruption of the natural ground. The monuments are known to have been held as marking the corners for surveys in the area and fit well with local evidence of the corners. No recent excavation was performed at these corners due to the minimal likelihood of finding ancient evidence. However, references to the corners were found in the BCS Surveyor's record, including a record dated January 26 & 28, 1859 which states that Corner 1 was "Reest'd from stumps of O.B. trees. Set rock 6 in. di." A record dated October 2, 3 & 5, 1857 states, with respect to Corner 2, "Set Rock, 8x13." As noted, neither of the referenced rocks were found and the existing Harrison monuments were held as marking the corners. An undated BCS tie card, believed to have been created in the early 1970s, shows both corners as "No Stone. RRR put in." It is considered most likely but not confirmed that the found Harrison monuments are in the same positions as the railroad rails (RRR) referenced on the undated tie card. The 2005 tie card does not include source data for the Harrison monuments. Corner 1 was originally established as a wood post in 1819. Corner 2 is not an original federal corner.



Kenneth E. Hedge
Kenneth E. Hedge, County Surveyor

James S. Swift
James S. Swift, IN LS 20200054
July 18, 2018

Center Township



SECTION CORNER RECORD

NW 250-050

BOONE COUNTY SURVEYOR'S OFFICE

State Plane grid coordinates NAD83 (CORS96):

North: 1758816.14 East: 3122162.11 (U.S. survey feet)

Type of monument: 5/8 inch diameter rebar with metal cap stamped 'Boone County Surveyor'

Depth: flush with adjacent road surface

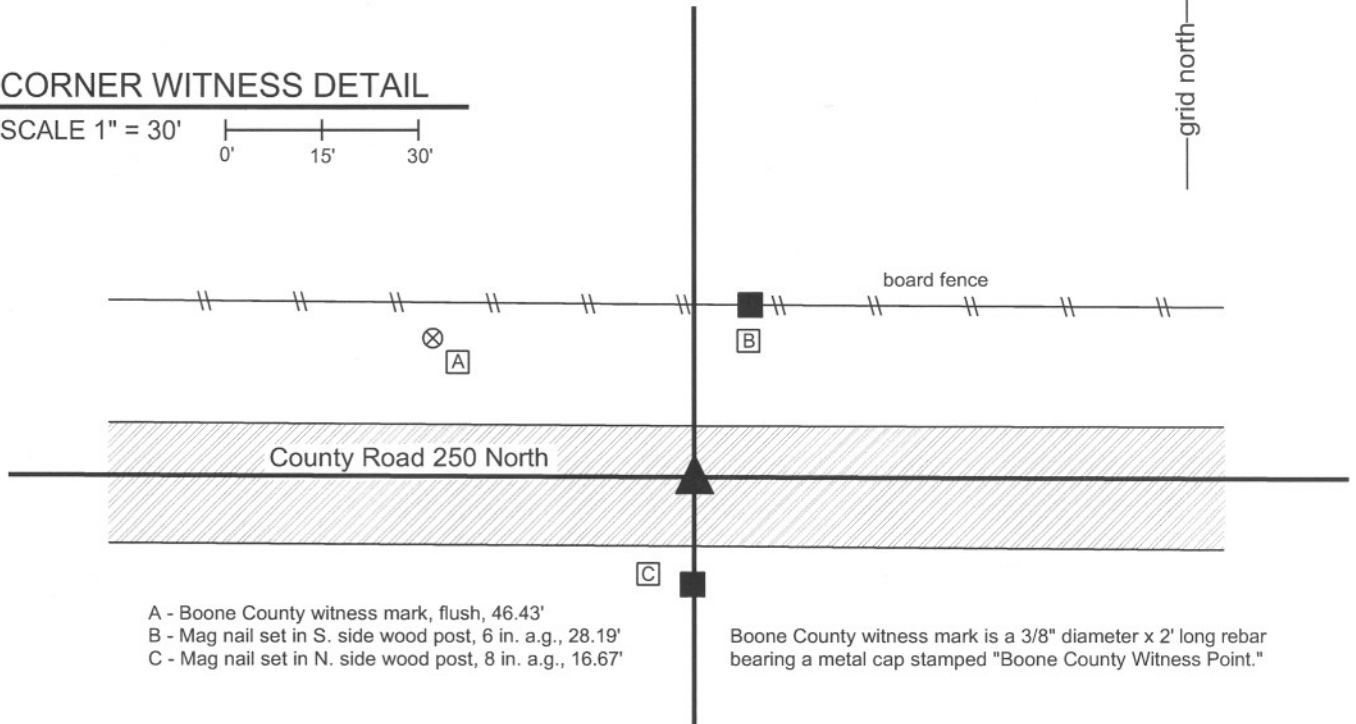
Indiana tie card references:

IN02_T19NR1W24_40



CORNER WITNESS DETAIL

SCALE 1" = 30'



- A - Boone County witness mark, flush, 46.43'
- B - Mag nail set in S. side wood post, 6 in. a.g., 28.19'
- C - Mag nail set in N. side wood post, 8 in. a.g., 16.67'

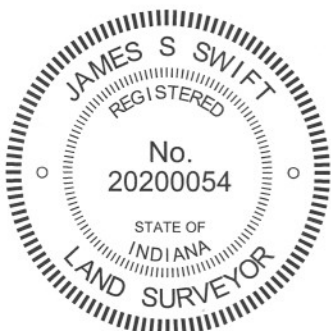
Boone County witness mark is a 3/8" diameter x 2' long rebar bearing a metal cap stamped "Boone County Witness Point."

The rebar was set over a stone found.

A BCS record dated January 26 & 28, 1859 states "Est'd. Set Rock." A BCS tie card dated September 15, 1971 states "Stone Located. RRR slanted over stone."

This corner was excavated at the request of a private surveyor to confirm the corner, given the apparent removal of most of the 1971 ties. Prior to excavation a P.K. nail was visible at the surface of the road. The P.K. nail did fit with the one remaining distance tie, being the wood corner post on the south side of the road. Excavation revealed a section of railroad rail, leaning substantially towards the north. The P.K. nail was slightly north of the northern tip of the rail. Excavation revealed horizontal sections of rebar on the east and west sides of the rail. The stone was found at 16 inches deep. The north end of the rail was leaned over the top of the stone and the P.K. nail had been directly over the top, high point of the stone. With the top 6 inches of the stone exposed, it measured 12 inches E-W by 9 inches N-S. The stone is embedded in the clay layer below the road, protruding approximately 4 inches out of the clay into the bottom of the road bed. The stone was left in place and the metal monuments removed. A short section of 5/8 inch diameter rebar was set directly over the top, high point of the stone in the same position as the P.K. nail found prior to excavation.

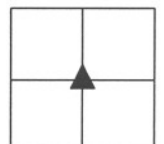
As this corner is the center of section 24, it does not represent an original corner monumented during the original federal survey. The stone is believed to have been held as the corner since at least 1859, particularly since it was found and witnessed in 1971.



Kenneth E. Hedge
Kenneth E. Hedge, County Surveyor

James S. Swift
James S. Swift, IN LS 20200054
March 30, 2012

Center Twp
Section 24
T19N, R1W



PHOTOGRAPHIC DOCUMENTATION

Date of photography: May 14, 2010

View of the railroad rail as first exposed.



View of the rail leaning over the stone.



View of the stone after the rail was removed.



For details and documentation, refer to related sheet "Section Corner Record."

SECTION CORNER RECORD

NW 300-000

BOONE COUNTY SURVEYOR'S OFFICE

State Plane grid coordinates NAD83 (2011):

North: 1761445.79 East: 3124832.52 (U.S. survey feet)

North: 1761508.43 East: 3124832.35 (U.S. survey feet)

Type of monument: 5/8 inch rebar with metal cap stamped 'Boone County Surveyor'

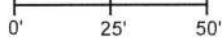
Depth: Corner 1: 14 inches deep, Corner 2: 10 inches deep.

Indiana tie card references:

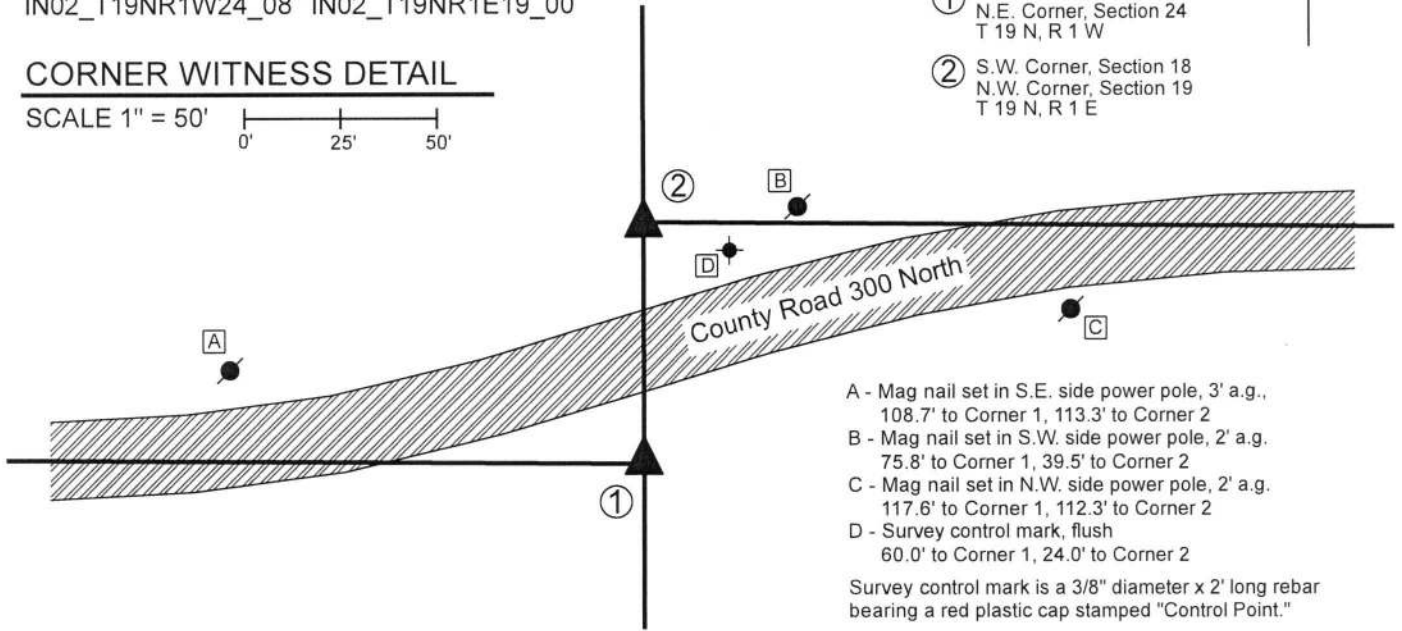
IN02_T19NR1W13_80 IN02_T19NR1E18_72
 IN02_T19NR1W24_08 IN02_T19NR1E19_00

CORNER WITNESS DETAIL

SCALE 1" = 50'



- ① S.E. Corner, Section 13
N.E. Corner, Section 24
T 19 N, R 1 W
- ② S.W. Corner, Section 18
N.W. Corner, Section 19
T 19 N, R 1 E



- A - Mag nail set in S.E. side power pole, 3' a.g.,
108.7' to Corner 1, 113.3' to Corner 2
- B - Mag nail set in S.W. side power pole, 2' a.g.,
75.8' to Corner 1, 39.5' to Corner 2
- C - Mag nail set in N.W. side power pole, 2' a.g.,
117.6' to Corner 1, 112.3' to Corner 2
- D - Survey control mark, flush
60.0' to Corner 1, 24.0' to Corner 2

Survey control mark is a 3/8" diameter x 2' long rebar bearing a red plastic cap stamped "Control Point."

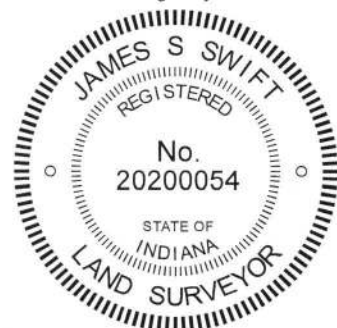
The rebar at Corner 1 was set in place of a vertical section of railroad rail found. The Rebar at Corner 2 was set approximately in place of two vertical sections of 5/8 inch rebar found.

A BCS record dated March 3, 1859 states, with respect to Corner 1, "Reestablished from both original trees. Stake from which Burr Oak, N87W, 14 in. 47 [links]." No specific descriptions of Corner 2 were found in the BCS Surveyor's Record. A tie card dated August 15, 1967 states "no stone" with apparent, though not explicit, reference to Corner 2.

Significant excavation was performed at Corner 1 on November 15, 2013 at which time a vertical section of railroad rail was found at 8 inches deep. Excavation of a large area around the rail revealed no further evidence of the corner and the rail was replaced at that time with a 5/8 inch rebar set at 14 inches deep with a metal cap stamped "Boone County Surveyor." The corner falls in an area of tilled agricultural ground on the south side of County Road 300 North. The depth of the monument was established to avoid disruption of the monument by agricultural equipment.

Minor excavation was performed at Corner 2 on July 10, 2018. At this corner, a section of 5/8 inch rebar was found with a red plastic cap stamped "Witness Point" at 6 inches deep. Excavation revealed another 5/8 inch rebar, with yellow plastic cap stamped "RLS 0083," found at 10 inches deep slightly east of the upper rebar. No further evidence of the corners was found. The position of the rebars fit well with local evidence of the corner in the form of the existing road to the east, fit well with the original federal closing distance with respect to Corner 1 and agree with previous surveys in the area. The rebars were accepted as providing the best available evidence of the general position of the corner. The final position of Corner 2 was established on the range line as defined by the rebar at Corner 1 and the Harrison monument at the standard corner 1/2 mile north (See Corner NW-350-000). The north-south position of the upper rebar was held and a BCS rebar was set on the Range line 0.1 foot west of the position of the rebar with red cap stamped 'Witness Point' and 0.1 feet south and 0.4 feet west of the position of rebar with yellow cap stamped 'RLS 0083.' Both previous rebars were removed during excavation. It is noted that Corner 2 falls on the south edge of tillable ground along the north side of County Road 300 South. The rebar was set at 10 inches deep to avoid disruption by agricultural equipment.

Corner 1 was originally established as a wood post in 1819. Corner 2 was originally established as a wood post in 1822.



Kenneth E. Hedge
 Kenneth E. Hedge, County Surveyor

James S. Swift
 James S. Swift, IN LS 20200054
 July 18, 2018

Center Township

Section 13 T19N, R1W	Section 18 T19N, R1E
Section 24 T19N, R1W	Section 19 T19N, R1E