

# SECTION CORNER RECORD

## BOONE COUNTY SURVEYOR'S OFFICE

SE 300-1100

State Plane grid coordinates NAD83 (NSRS 2007):

North: 1731212.63 East: 3183418.78 (U.S. survey feet)

Type of monument: Harrison, 4" disk 'Section Corner'

Depth: flush with adjacent ground in median

Indiana tie card references:

IN02\_T18NR2E13\_72 IN02\_T18NR2E14\_80

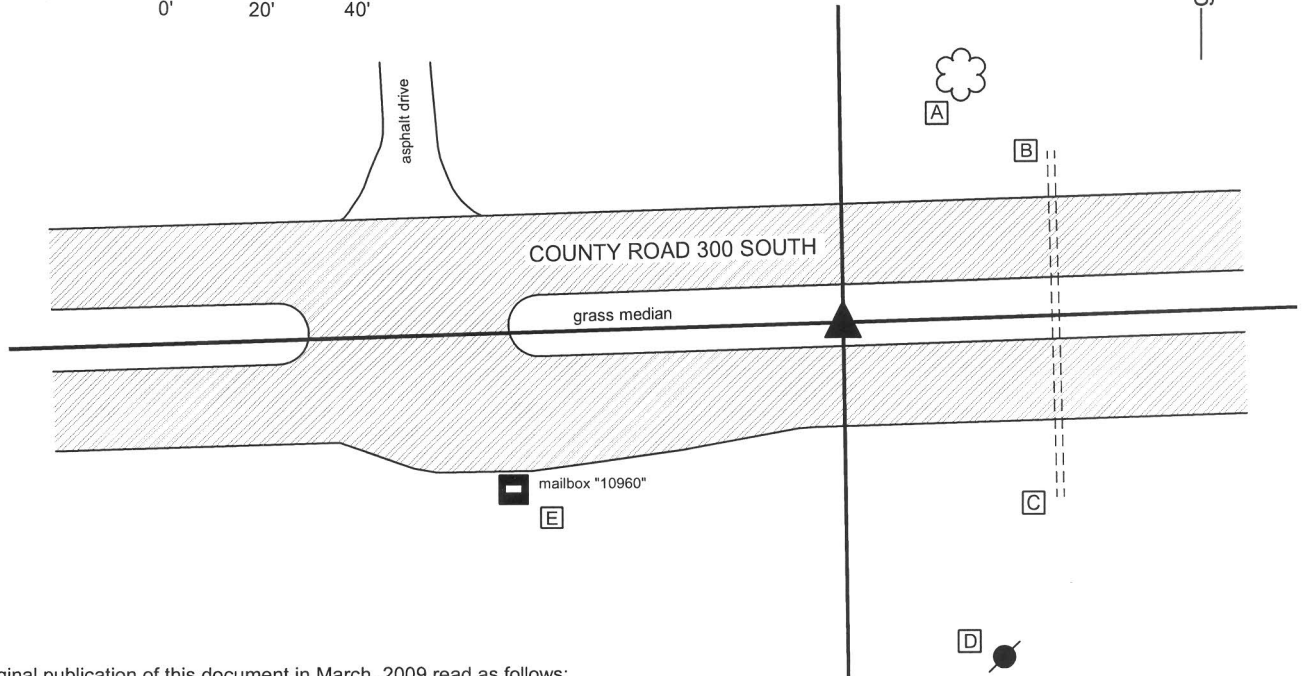
IN02\_T18NR2E23\_08 IN02\_T18NR2E24\_00

### CORNER WITNESS DETAIL

SCALE 1" = 40'



- A - 16 inch diameter Oak tree, south edge at 2' a.g., 52.0'
- B - Top, North end, 20"x30" squashed concrete storm pipe, 56.0'
- C - Top, south end, 20"x30" squashed concrete storm pipe, 58.0'
- D - Mag nail set in N. side power pole, 2' a.g., 74.6'
- E - N.E. corner, steel mailbox post, # 10960, 76.5'



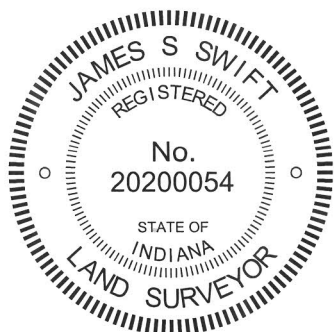
The original publication of this document in March, 2009 read as follows:

"The harrison monument was set in place of a mag nail and stone.

A BCS record of January 20, 1874 states "Reestablished after running all four lines terminating here. Set a rock 21.18.12 +". A tie card of unknown source dated May 12, 1967 states "found stone with cross. Set iron pipe over." A note added to that tie card by a field crew from this office, dated July, 1967 states "Set R.R. rail on N. side of stone." A BCS tie card dated July 5, 2006 shows the corner as a mag nail with no documentation about source. This corner was excavated on August 6, 2008. Prior to excavation a mag nail was visible, approximately one inch below the surface of the road in a hole in the asphalt. Excavation revealed the railroad rail at 20 inches deep and the stone at 23 inches deep. The etched "+" on the stone was on the north downslope of the top of the stone. The rail was leaning against the north side of the stone, extending to approximately over the "+." Please refer to the attached sheet for photographic documentation. The mag nail had been over the top, center of the stone while the top of the rail had been slightly north. All three monuments were removed. The stone was removed due to the proposed reconstruction of this section of road. The harrison monument was set in the position of the mag nail, which is also the position of the top, center of the stone.

This corner was originally established as a wood post in July, 1821."

Major reconstruction of the road since the corner was confirmed in 2009 disturbed but did not destroy the harrison monument. The monument was found at 1.2 feet deep in the grass median of the newly constructed road. The monument appeared to have been sheered off but the position of the monument had not been changed. The monument did not appear to have been tilted or displaced in any way. The damaged harrison was left in place and on May 16, 2013 a new harrison monument was set directly over the old one in the same horizontal position.



*Kenneth E. Hedge*  
 \_\_\_\_\_  
 Kenneth E. Hedge, County Surveyor

Union Twp

*James S. Swift*  
 \_\_\_\_\_  
 James S. Swift, IN LS 20200054

Eagle Twp

March 11, 2009, Revised February 5, 2015

Section 14 T18N, R2E	Section 13 T18N, R2E
Section 23 T18N, R2E	Section 24 T18N, R2E

PHOTOGRAPHIC DOCUMENTATION

Date of photography: August 6, 2008

Corner stone and railroad rail. The rail was situated against the north side of the stone, which is in agreement with the 1967 tie card.



Corner stone after rail was removed. The rail was leaning along the side of the stone with the top of the rail over the etched "+" on the stone.



Corner stone and railroad rail - both removed from ground. The stone was removed due to proposed reconstruction of County Road 300 South. The rail is 30 inches long. The stone matches the 1874 record description of "set rock 21.18.12 +"



Same picture as above with etched "+" enhanced for ease of visual detection.



For details and documentation, refer to related sheet "Section Corner Record."

# SECTION CORNER RECORD

# SE 300-1150

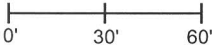
## BOONE COUNTY SURVEYOR'S OFFICE

State Plane grid coordinates NAD83 (NSRS 2007):  
North: 1731292.07 East: 3186073.24 (U.S. survey feet)

Type of monument: Harrison, 4" disk 'Section Corner'  
Depth: flush with the adjacent road surface

Indiana tie card references:  
IN02\_T18NR2E13\_76  
IN02\_T18NR2E24\_04

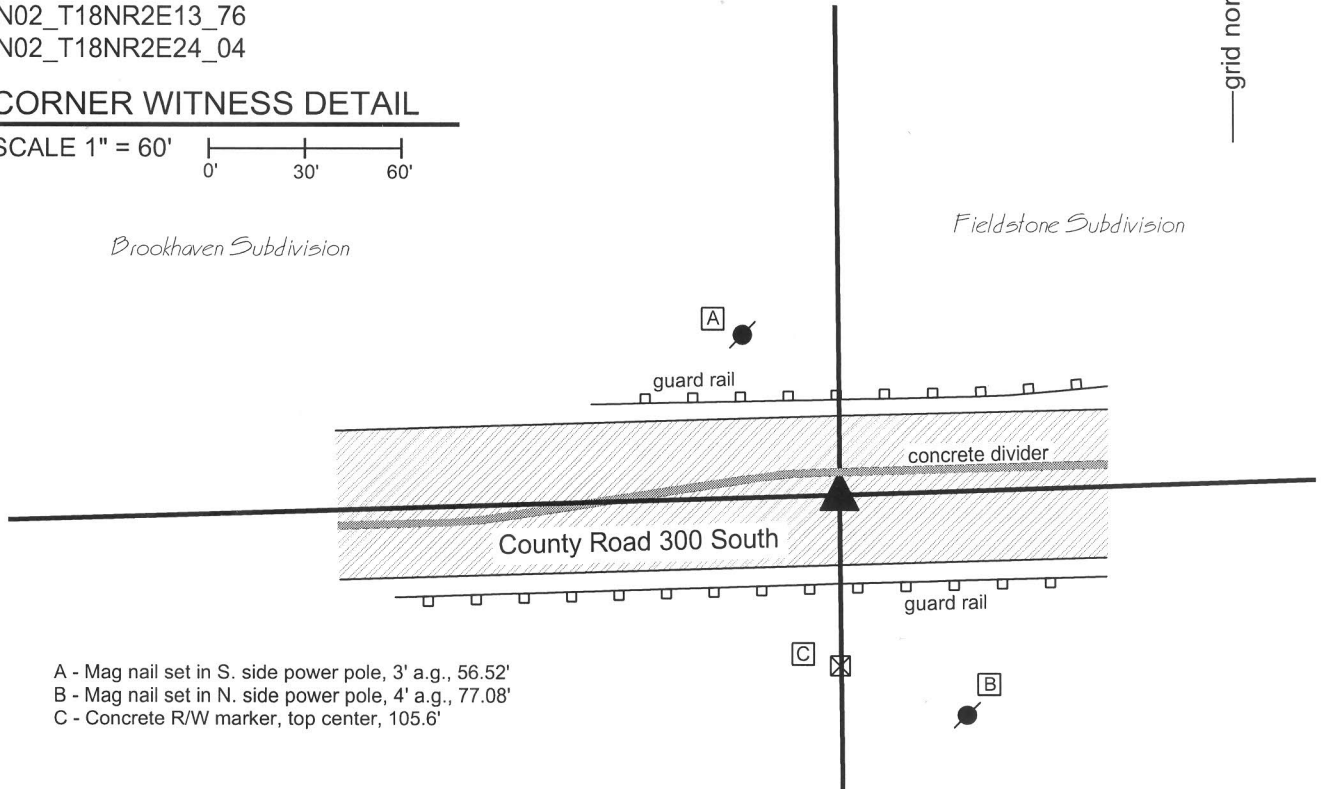
### CORNER WITNESS DETAIL

SCALE 1" = 60' 



*Brookhaven Subdivision*

*Fieldstone Subdivision*

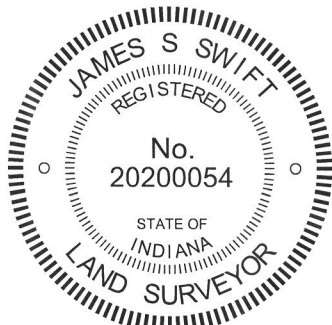


- A - Mag nail set in S. side power pole, 3' a.g., 56.52'
- B - Mag nail set in N. side power pole, 4' a.g., 77.08'
- C - Concrete R/W marker, top center, 105.6'

The original publication of this document in March, 2009 read as follows:

"The harrison monument was set in place of the top, high point of a stone found.  
A BCS record of April 1-2, 1875 states "reestablished by running a line from G to E. Set Rock 28.15 by 11 +." A BCS tie card of July 17, 1967 states "no stone found." A BCS tie card of July 5, 2006 states "mag nail w/ washer found." This corner was excavated on August 7, 2008. Prior to excavation, a mag nail was visible approximately 2 inches deep in a hole in the asphalt. Excavation revealed a railroad rail found at 19 inches deep, slightly south and east of the position of the mag nail. Excavation also revealed a wood hub on the south side of the rail and two 1/2 inch rebars, one of which was against the east side of the rail and the other in the neck of the rail on the south side, west of the hub. All of these monuments were removed for purposes of further excavation. The record stone was found at 34 inches deep, north and slightly east of the rail. The stone was removed and inspected. The stone had been vertical and the dimensions of the stone exactly match the record dimensions of 28 15 by 11 inches. No specific markings were detected. It is noted that the mag nail, the railroad rail, the wood hub, the two 1/2 inch rebars and the stone comprise six monuments, all of which were within approximately a one foot diameter horizontal circle, none of which were in the exact same horizontal position. The record stone was held as the corner and the harrison monument was set in the position of the distinct top, high point of the stone. The mag nail had been approximately 0.4 foot South and 0.4 foot West of the high point of the stone. The stone was removed due to the proposed reconstruction of this section of road. This corner was originally established as a wood post in July, 1821."

Major reconstruction of the road since the corner was confirmed in 2009 destroyed the monument set at that time. A new harrison monument was set in the same position on September 13, 2013.



  
Kenneth E. Hedge, County Surveyor

  
James S. Swift, IN LS 20200054

March 11, 2009, Revised February 5, 2015

Union Township

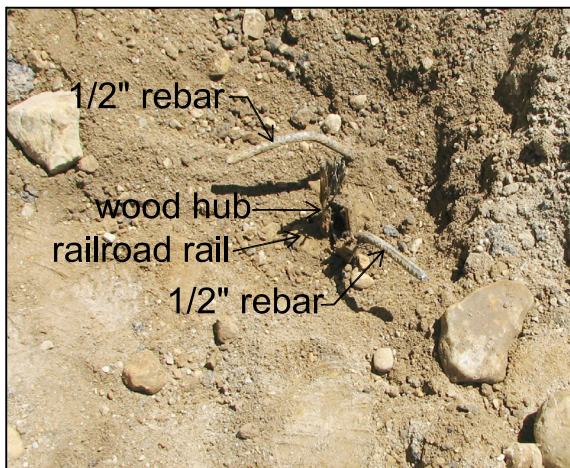
Section 13  
T18N, R2E

Eagle Township

Section 24  
T18N, R2E

PHOTOGRAPHIC DOCUMENTATION

Date of photography: August 6, 2008



Above:  
Railroad rail, wood hub and two 1/2" rebars.



Above right:  
Corner stone, exposed at bottom of fill.  
The top of the stone was 34 inches below  
the pavement.



Right:  
Assistant County Surveyor Carol Cunningham  
observes stone hunter Junior Franklin brush  
the stone in search of markings, particularly an  
etched "+".

Right:  
The stone shown as removed from the  
ground. The stone was removed due to the  
proposed reconstruction of County Road 300  
South. Though no specific markings were  
found, the stone matches the dimensions of  
the 1875 record "set rock 28.15 by 11 +"  
(without the +).



For details and documentation, refer to  
related sheet "Section Corner Record."

# SECTION CORNER RECORD

SE 300-1200

## BOONE COUNTY SURVEYOR'S OFFICE

State Plane grid coordinates NAD83 (NSRS 2007):

Corner 1: North: 1731379.40 East: 3188721.68 (U.S. survey feet)

Corner 2: North: 1731346.40 East: 3188721.89 (U.S. survey feet)

Type of monument: Harrison, 4" disk 'Section Corner'

Depth: flush or 1 inch deep.

Indiana tie card references:

IN02\_T18NR2E13\_80

IN02\_T18NR2E24\_08

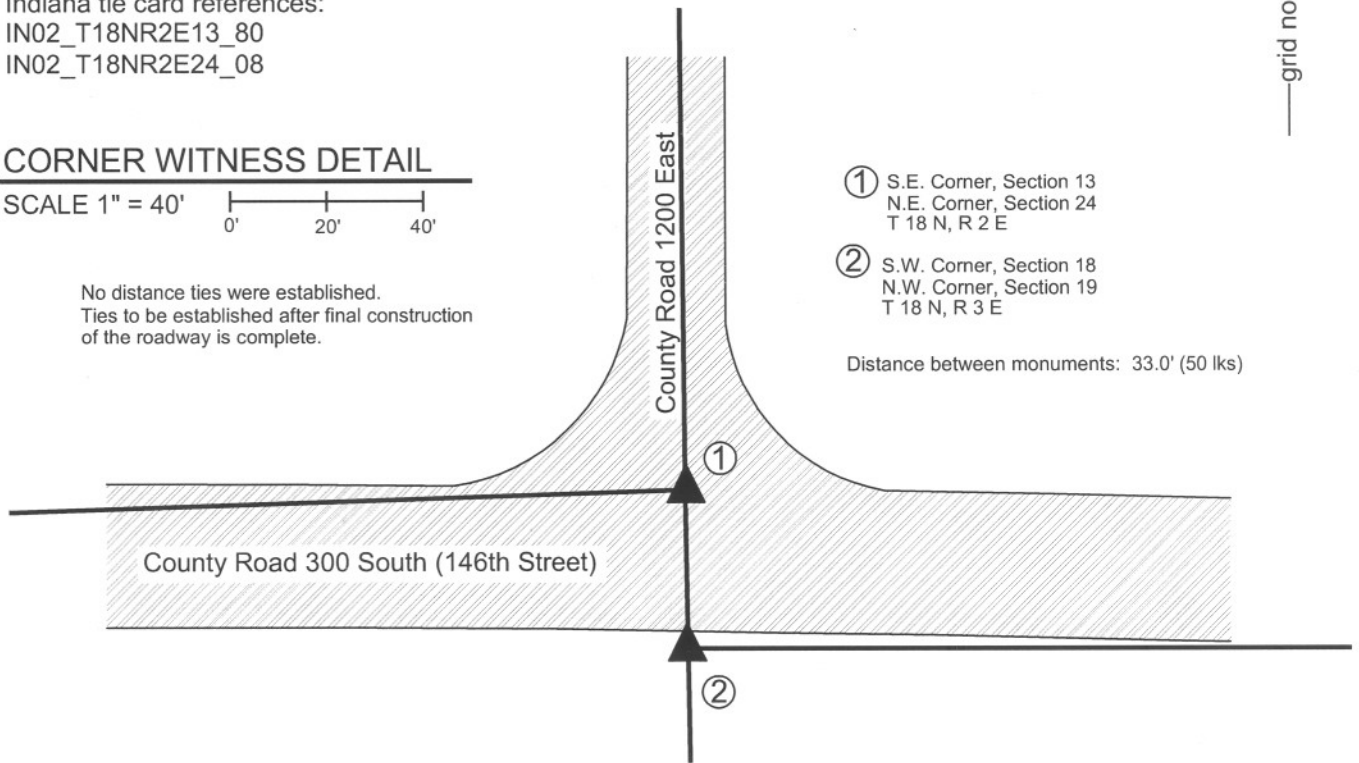


### CORNER WITNESS DETAIL

SCALE 1" = 40'



No distance ties were established.  
Ties to be established after final construction of the roadway is complete.

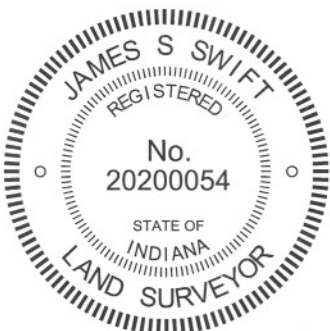


① S.E. Corner, Section 13  
N.E. Corner, Section 24  
T 18 N, R 2 E

② S.W. Corner, Section 18  
N.W. Corner, Section 19  
T 18 N, R 3 E

Distance between monuments: 33.0' (50 lks)

The harrison monument at corner 1 was set in place of a railroad spike found and the harrison monument at corner 2 was set in place of a brass plug in concrete found. The spike and plug had both been removed during road construction in 2010 or 2011. This corner was documented in detail as part of a survey by James D. Hall, LS 20500017 with Anderson and Associates dated July 7, 2006. The Hall survey was commissioned by the Boone County Surveyor and is on file in the Surveyor's Office. The findings of that survey are upheld by this document and the harrison monuments were set at the corner positions determined by that survey. Prior to the Hall survey, confusion existed with respect to the location of corner 1. Two railroad spikes existed in the vicinity of that corner. One, being at 50 links (33 feet) north of the brass plug in concrete at corner 2 and the other being at 24.2 feet north. Mr. Hall determined that the northerly of the two monuments was over an Indot Type C Monument set as part of a road construction project in 1963. The southerly of the two railroad spikes was set at a position shown on a BCS tie card dated July 17, 1967 with the statement "no stone found." The Hall survey notes that it is believed likely that this railroad spike was over a section of railroad rail, a monument commonly used by BCS field crews in the late 1960s. Although the southerly of the two spikes has been held as the corner for some surveys, the Hall survey determined that the northerly of the two spikes represents an older and more likely position for the corner. All known monumentation was removed during 2010 or 2011 as part of the reconstruction of County Road 300 South (146th Street.). The current harrison monuments were set at the positions of the brass plug in concrete (corner 2) and northerly of the two railroad spikes (corner 1) on August 30 and 31, 2011.



*Kenneth E. Hedge*  
Kenneth E. Hedge, County Surveyor

*James S. Swift*  
James S. Swift, IN LS 20200054  
March 30, 2012

		Boone County	Hamilton County		
Eagle Twp	Union Twp	Section 13 T18N, R2E	Section 18 T18N, R3E	Washington Twp	▲
	Clay Twp	Section 24 T18N, R2E	Section 19 T18N, R3E		

# SECTION CORNER RECORD

# SE 300-1200

## BOONE COUNTY SURVEYOR'S OFFICE

State Plane grid coordinates NAD83 (2011):

Corner 1: North: 1731379.43 East: 3188721.82 (U.S. survey feet)  
 Corner 2: North: 1731346.62 East: 3188721.91 (U.S. survey feet)

Both corners: Harrison, 4" disk 'Section Corner', flush

Indiana tie card references:

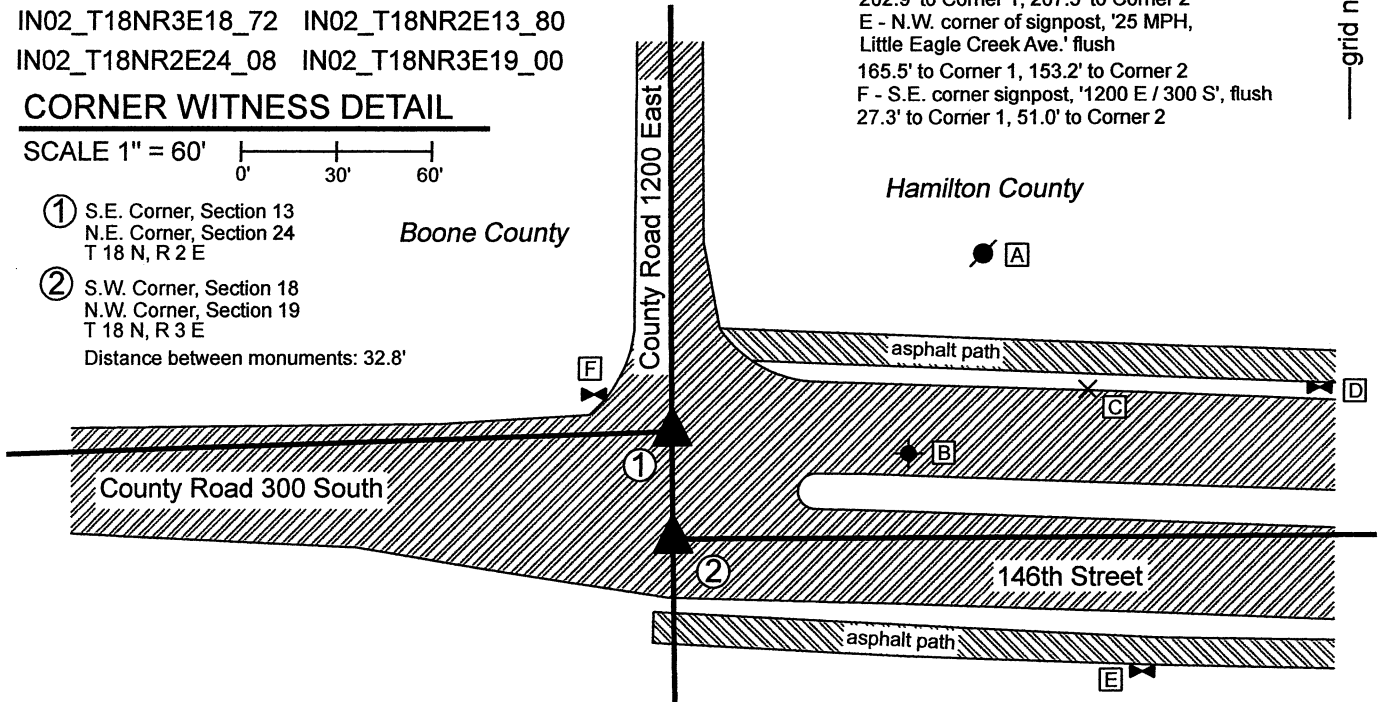
IN02\_T18NR3E18\_72 IN02\_T18NR2E13\_80  
 IN02\_T18NR2E24\_08 IN02\_T18NR3E19\_00

### CORNER WITNESS DETAIL

SCALE 1" = 60'

- ① S.E. Corner, Section 13  
 N.E. Corner, Section 24  
 T 18 N, R 2 E
  - ② S.W. Corner, Section 18  
 N.W. Corner, Section 19  
 T 18 N, R 3 E
- Distance between monuments: 32.8'

- A - Mag nail set in S. side power pole, 2' a.g., 111.8' to Corner 1, 131.1' to Corner 2
- B - Plug in monument box, flush, 74.4' to Corner 1, 78.3' to Corner 2
- C - X chiseled in top of road drain casting, w. side 130.8' to Corner 1, 137.8' to Corner 2
- D - S.W. corner of signpost, 'Right Turn Only', flush 202.9' to Corner 1, 207.5' to Corner 2
- E - N.W. corner of signpost, '25 MPH, Little Eagle Creek Ave.' flush 165.5' to Corner 1, 153.2' to Corner 2
- F - S.E. corner signpost, '1200 E / 300 S', flush 27.3' to Corner 1, 51.0' to Corner 2

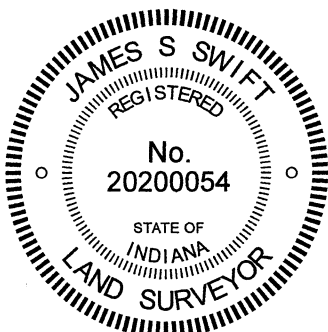


The Harrison monuments at both corners were set by road contractors during the recent reconstruction of this intersection in September, 2021. The monument set at the Boone County corner (Corner 1) was set in the position of a Mag nail set by this office to mark the position of a Harrison monument which previously marked the corner. The Hamilton County Surveyor's Office provided the position by which the Harrison monument at Corner 2 was set.

The most recent BCS documentation for this corner was a tie card dated March 30, 2012, which also followed reconstruction of the intersection and new monumentation of the corners in 2011. A summary of the previous documentation is as follows:

This corner was documented in detail as part of a survey by James D. Hall, LS 20500017 with Anderson and Associates dated July 7, 2006. The Hall survey was commissioned by the Boone County Surveyor and is on file in the Surveyor's Office. The findings of that survey are upheld by this document and the corners were monumented at the positions determined by that survey. Prior to the Hall survey, confusion existed with respect to the location of Corner 1. Two railroad spikes existed in the vicinity of that corner. One, being at 50 links (33 feet) north of the brass plug in concrete at Corner 2 and the other being at 24.2 feet north. Mr. Hall determined that the northerly of the two monuments was over an INDOT Type C Monument set as part of a road construction project in 1963. The southerly of the two railroad spikes was set at a position shown on a BCS tie card dated July 17, 1967 with the statement "no stone found." The Hall survey notes that it is believed likely that this railroad spike was over a section of railroad rail, a monument commonly used by BCS field crews in the late 1960s. Although the southerly of the two spikes has been held as the corner for some surveys, the Hall survey determined that the northerly of the two spikes represents an older and more likely position for the corner. All known monumentation was removed during 2010 or 2011 as part of the reconstruction of County Road 300 South (146th Street).

Variations between coordinates shown hereon and shown on the 2012 document represent variations in observed GPS positions with respect to the NAD83 (NSRS 2007) (held for the previous positions) adjustment and the NAD83 (2011) adjustment.



*Kenneth E. Hedge*  
 Kenneth E. Hedge, County Surveyor

*James S. Swift*  
 James S. Swift, IN LS 20200054  
 December 20, 2021

Boone County	Hamilton County
Section 13 T18N, R2E Union Township	Section 18 T18N, R3E Washington Township
Section 24 T18N, R2E Eagle Township	Section 19 T18N, R3E Clay Township

# SECTION CORNER RECORD

## BOONE COUNTY SURVEYOR'S OFFICE

SE 350-1100

State Plane grid coordinates NAD83 (NSRS 2007):

North: 1728571.61 East: 3183451.52 (U.S. survey feet)

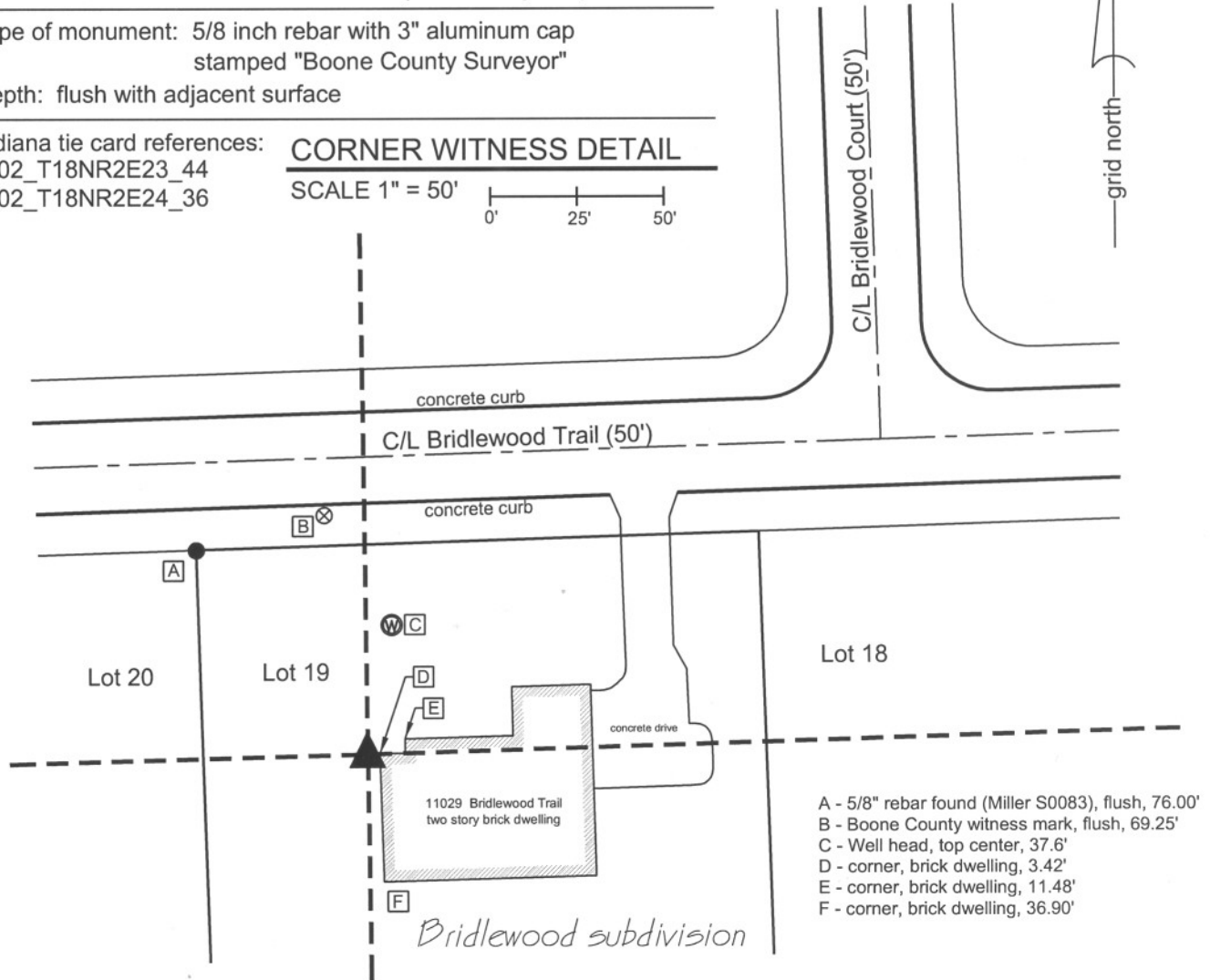
Type of monument: 5/8 inch rebar with 3" aluminum cap stamped "Boone County Surveyor"

Depth: flush with adjacent surface

Indiana tie card references:  
IN02\_T18NR2E23\_44  
IN02\_T18NR2E24\_36

### CORNER WITNESS DETAIL

SCALE 1" = 50'



- A - 5/8" rebar found (Miller S0083), flush, 76.00'
- B - Boone County witness mark, flush, 69.25'
- C - Well head, top center, 37.6'
- D - corner, brick dwelling, 3.42'
- E - corner, brick dwelling, 11.48'
- F - corner, brick dwelling, 36.90'

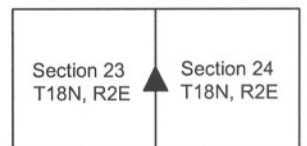
The harrison monument was set at the calculated midpoint of the line connecting the section corners to the north and south. This corner falls within Lot 19, Bridlewood Subdivision. The plat of Bridlewood, Plat Book 6, page 105, Office of the Boone County Recorder, shows the corner as being established "by split no monument found." All subsequent refernces to this corner hold a calculated mid-point position. This position for the corner falls 3.4 feet west of the corner of an existing dwelling. Any evidence of the corner which may have existing prior to construction of the house would hav been destroyed during construction of the foundation for this house. Hence, with no evidence remaining and all recent refernces in agreement, the corner was established at the midpoint of the line connecting the section corners to the north and south, in accordance with the record plat for Bridlewood Subdivision. The plat demonstrates the corners to the north and south as being stones, both of which were found. The positions of these stones were used to compute the midpoint. A 36 inch long 5/8 inch diameter rebar was set with a metal cap stamped "Boone County Surveyor" at the computed midpoint. This corner was originally established as a wood post in July, 1821.



*Kenneth E. Hedge*  
Kenneth E. Hedge, County Surveyor

*James S. Swift*  
James S. Swift, IN LS 20200054  
July 14, 2010

Eagle Township



# SECTION CORNER RECORD

# SE 350-1200

## BOONE COUNTY SURVEYOR'S OFFICE

State Plane grid coordinates NAD83 (CORS96):

CORNER 1: North: 1728745.10 East: 3188764.04 (U.S. survey feet)

CORNER 2: North: 1728710.25 East: 3188764.38 (U.S. survey feet)

Type & depth of monument:

CORNER 1: 1" diam. iron pipe, 1" above grade.

CORNER 2: Harrison monument, 1" below grade.

Indiana tie card references:

IN02\_T18NR2E24\_44 IN02\_T18NR3E19\_36

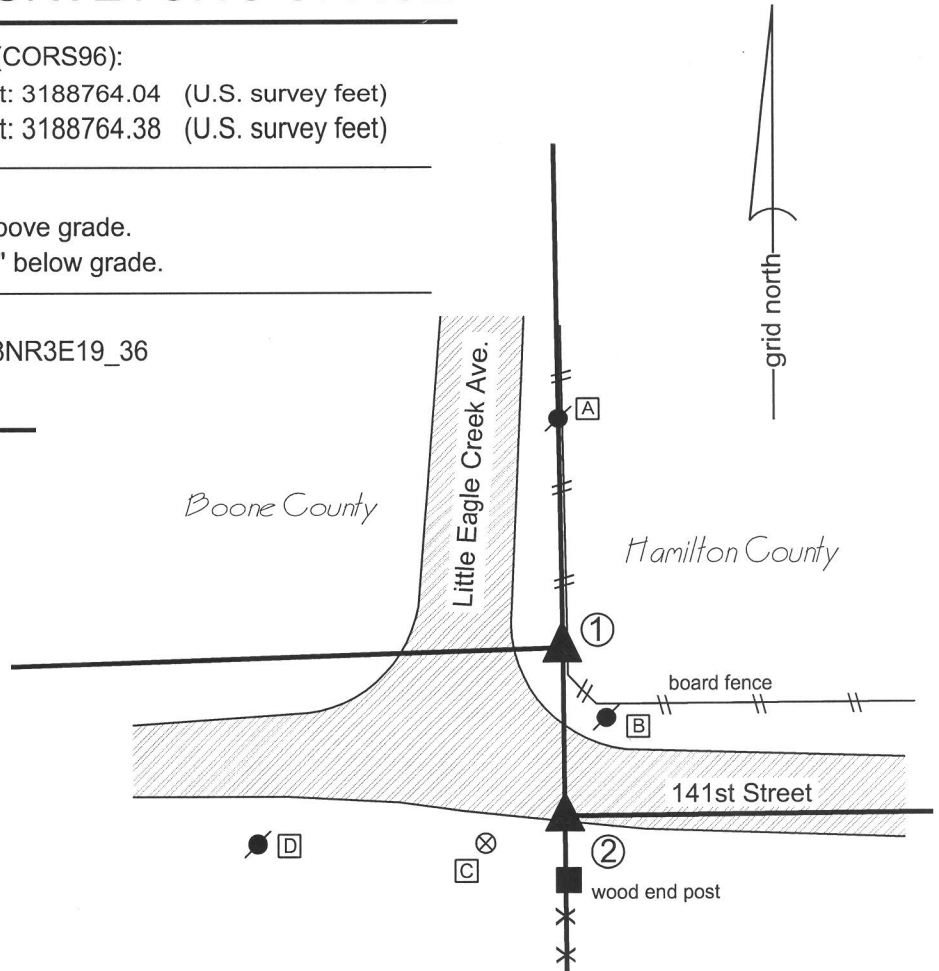
### CORNER WITNESS DETAIL

SCALE 1" = 40'

- ① East quarter corner  
Section 24  
T 18 N, R 2 E
- ② West quarter corner  
Section 19  
T 18 N, R 3 E

Distance between monuments = 34.85'

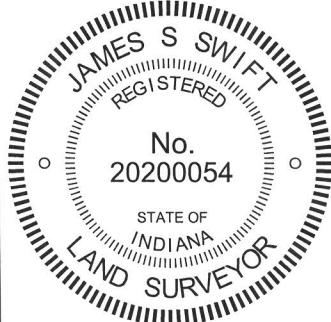
- A - Mag nail set in S. side power pole, 1' a.g.  
46.52' to corner 1, 81.37' to corner 2
- B - Mag nail set in W. side power pole, 1' a.g.  
16.14' to corner 1, 21.58' to corner 2
- C - Boone County witness mark, flush  
43.60' to corner 1, 17.36' to corner 2
- D - Mag nail set in E. side power pole, 1' a.g.  
73.89' to corner 1, 62.46' to corner 2



The Harrison monument marking corner 2 (Hamilton County corner) was set by the Hamilton County Surveyor's Office in April, 2005 in place of a rebar which was set in 1965. This monument fits with local evidence in the form of the prolongation of the ancient fence to the south and the prolongation of the center of the road to the east.

With respect to corner 1 (Boone County corner), a BCS record of November, 1866 states "Reestablished. Set Rock 8.4 by 4 marked + on top & above this another Rock 22.20 by 13 marked + on top. Thence South 39.86 to Sect. cor. E." The previous entry to this record states that corner D (subject corner 1 of this document) is 39.86 chains south of Corner C (SE-300-1200). The iron pipe marking corner 1 was set as part of a survey by Weihe Engineers, Inc., Allan H. Weihe, L.S. dated October 31, 1968. The survey shows the pipe as being set at the easterly prolongation of a fence to the west and directly north of the Hamilton County corner. The survey shows the fence existing along the section line from a point one-quarter mile west of the subject corner, east to Eagle Creek. The pipe has been held for numerous private surveys, many of which are recorded in the Office of the Boone County Recorder. The distance between the monuments is greater than that of the average of the record closing distances at the section corners to the north and south, which is computed as 32.5 links (21.45'). A few references have been found calling for a stone which is at a position close to the average closing distance of 21.45 feet. Excavation of an area centered on this position revealed several rocks, none of which matched either the record dimensions called in the 1866 record or the characteristics of other stones found marking section corners, and all of which appeared to exist in that position for the purpose of stabilizing the interior corner of the roadway. Excavation was not performed in the vicinity of the iron pipe due to the presence of a large maple tree adjacent to and west of the pipe. The pipe is within one foot of being equidistant from the section corners to the north and south, in conformity with the 1866 record.

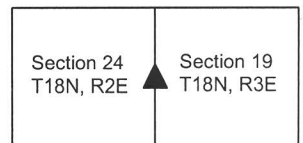
It is noted that the line extended west from this corner may be expected to represent the line between the subdivisions called Willow Ridge (recorded in Plat Book 13, pages 12-16) and The Willows (recorded in Plat Book 16, pages 40-53). However, as monumented in the field and represented on the plats, the north line of Willow Ridge and the south line of the Willows do not coincide. The north line of Willow Ridge appears to be the same line as the quarter-section line shown on the 1968 Weihe survey, connecting the iron pipe with the position of a stone found at the center of section, as shown on the 1968 Weihe survey. This line is held as the quarter-section line by this office. Please refer to documentation for corner SE-350-1150 for additional information. The south line of the Willows, as monumented, appears to hold a line connecting the iron pipe at the east quarter corner with a rebar found approximately 9.7 feet north of the stone shown on the Weihe survey. Hence the lines, as monumented, diverge as they bear west towards the center of section. However, the plat of the Willows demonstrates that its south line diverges from the section line as it bears to the east from the section line. Hence, as represented by the plats and monumentation, three lines exist: the north line of Willow Ridge, which coincides with the quarter section line held by this office, the monumented south line of the Willows, which is north of the quarter section line held by this office, and the quarter section line demonstrated graphically on the plat of the Willows, which appears to cross the quarter section line held by this office, being north of the line at the center of section and south of the line at the east quarter corner. The survey cross referenced on the plat of the Willows, Instrument 9608301, pertains to land in section 25, T18N, R2E. The plat of the Willows does not demonstrate specific, precise information about the location of the south line of the northeast quarter and leaves that to graphic interpretation.



Kenneth E. Hedge, County Surveyor

James S. Swift, IN LS 20200054  
January 15, 2013

Boone Co. Hamilton Co.  
Eagle Twp Clay Twp





PHOTOGRAPHIC DOCUMENTATION

Date of photography: July 25 & October 1, 2012

A stone found below the asphalt. This stone is believed to have been held as marking the corner for some private surveys but does not match the record description. This stone appeared, at the time of excavation, to serve the purpose of stabilizing the road, along with the other stones found. See attached report.



The corner, including the old maple tree and Little Eagle Creek Avenue. View is from the south, looking north along the fence and road.



For details and documentation, refer to related sheet "Section Corner Record."

Two more stones found. See note to the side and see documentation on attached sheet.



The various found stones and the area of excavation prior to patching the road bed.



The iron pipe held as marking the corner.



# SECTION CORNER RECORD

SE 400-1100

## BOONE COUNTY SURVEYOR'S OFFICE

State Plane grid coordinates NAD83 (NSRS 2007):

North: 1725930.58 East: 3183484.27 (U.S. survey feet)

Type of monument: Stone

Depth: 2 inches above grade

Indiana tie card references:

IN02\_T18NR2E23\_80

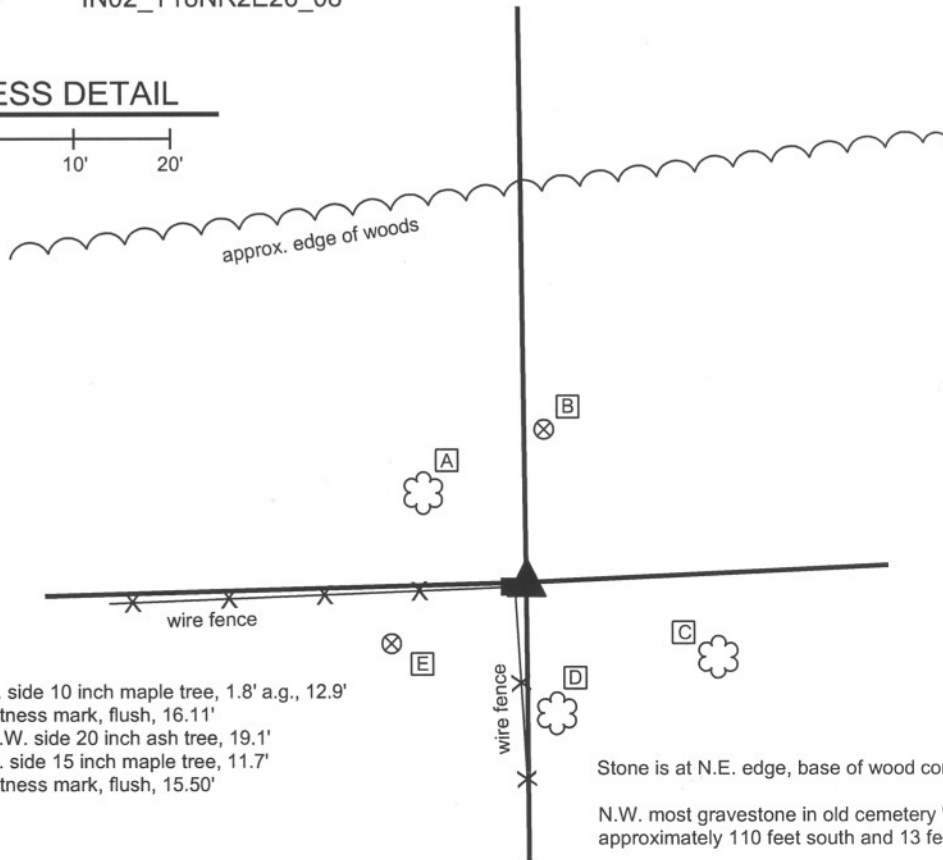
IN02\_T18NR2E24\_72

IN02\_T18NR2E25\_00

IN02\_T18NR2E26\_08

### CORNER WITNESS DETAIL

SCALE 1" = 20'



- A - Mag nail set in E. side 10 inch maple tree, 1.8' a.g., 12.9'
- B - Boone County witness mark, flush, 16.11'
- C - Mag nail set in N.W. side 20 inch ash tree, 19.1'
- D - Mag nail set in N. side 15 inch maple tree, 11.7'
- E - Boone County witness mark, flush, 15.50'

Stone is at N.E. edge, base of wood corner post.

N.W. most gravestone in old cemetery "John Purdin" is approximately 110 feet south and 13 feet east of corner.

The stone was found in place.

A BCS record of April 14, 1880 states "Reestablished from Beech bearing tree. Set Rock 18.9 by 11 in. + on top." No BCS tie cards were found for this corner. Numerous private surveys call for a stone found. The stone is visible in the ground, protruding approximately 2 inches out of the ground at the northeast corner of the base of a an old wood corner post. The "+" is clearly visible on top, which represents the precise location held as the corner for this tie card.

This corner was originally established as a wood post in July, 1821.



*Kenneth E. Hedge*  
 Kenneth E. Hedge, County Surveyor

*James S. Swift*  
 James S. Swift, IN LS 20200054

March 11, 2009 Revised July 14, 2010

Eagle Township

Section 23 T18N, R2E	Section 24 T18N, R2E
Section 26 T18N, R2E	Section 25 T18N, R2E

PHOTOGRAPHIC DOCUMENTATION

Date of photography: March 6, 2009

The stone from above.



The stone from above and east.



The stone, old wood post and fiberglass witness post.  
View from the east.



For details and documentation, refer to related sheet "Section Corner Record."

# SECTION CORNER RECORD

# SE 400-1150

## BOONE COUNTY SURVEYOR'S OFFICE

State Plane grid coordinates NAD83 (NSRS 2007):

North: 1726054.28 East: 3186137.66 (U.S. survey feet)

Type of monument: 5/8 inch rebar with metal cap stamped "Boone County Surveyor" set in concrete at base of wood post.

Depth: approximately 6 inches above adjoining grade.

Indiana tie card references:

IN02\_T18NR2E24\_76

IN02\_T18NR2E25\_04

### CORNER WITNESS DETAIL

SCALE 1" = 40'



- A - Mag nail set in S. side, 20 inch diameter oak tree, 2.0' a.g., 7.6'
- B - 5/8 inch rebar with plastic cap stamped 'Polaris LS9600005', flush, 30.0'
- C - N.W. corner, black metal post for Pool area fence, 35.0'
- D - Center of cul-de-sac monument (copperweid), flush, 159.2'

The rebar was set in place of a rebar found at the south edge of a wood corner post. No specific descriptions of the corner were found in the BCS "Surveyor's Record." The corner is shown as the terminal point for measurements in 1834. No other references were found in that record. No recent BCS tie cards were found. This corner is shown on several surveys as being a corner fence post found, including a survey by Richard H. Miller, Schneider Engineering Corporation, recorded in Survey Book 2, page 25 (Instrument 96080301). This survey is referenced as providing the underlying perimeter boundary on the plats of Brittany Chase, Section 1 (Plat Book 9, p.33-34) and Section II (Plat Book 10, p.63-64.) The plat of Willow Ridge (Plat Book 13 p.12-16) references two surveys by Donn M. Scotten, Benchmark Surveying, Inc; Survey Book 5, p.36-38, which references a computed position for the corner, and Survey Book 5, p.39-40 which shows the corner as a fence post accepted.

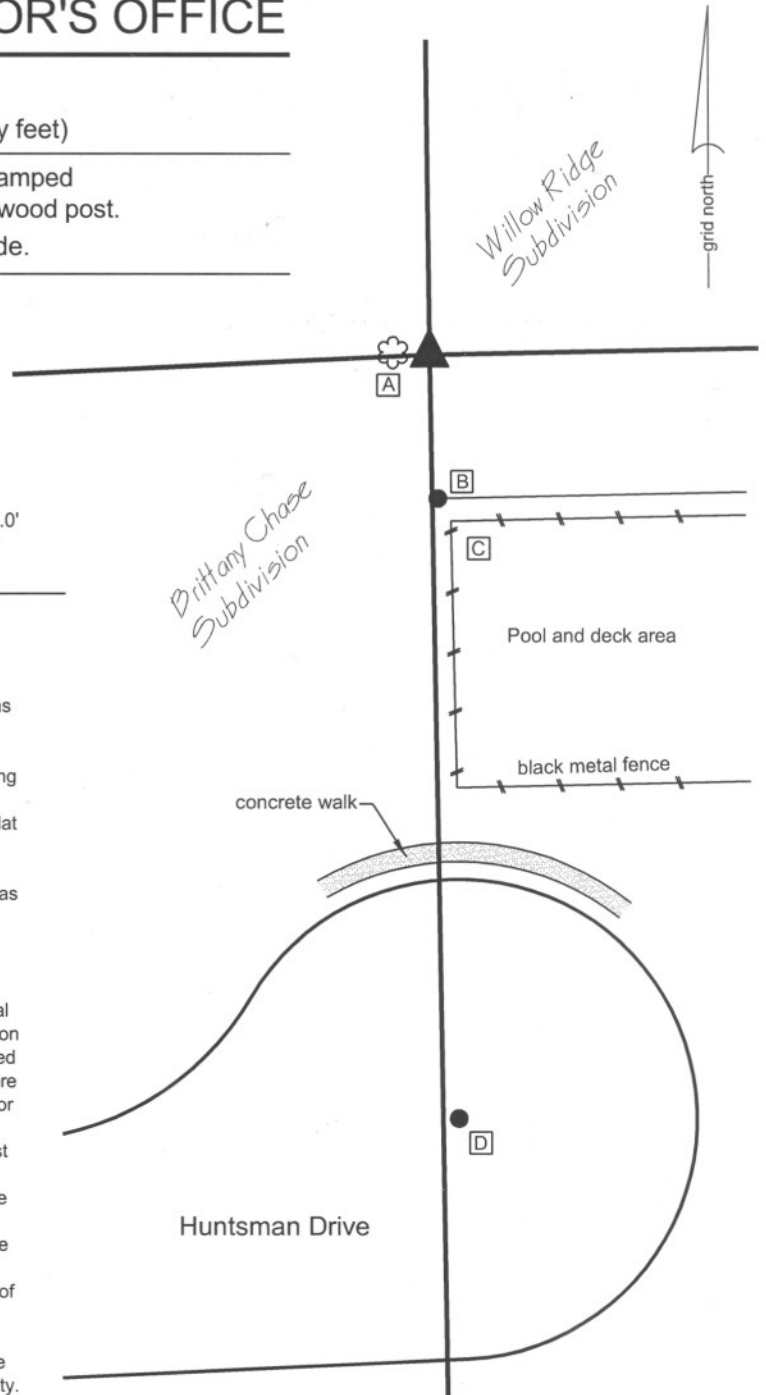
A wood corner post was found at the intersection of fences to the north and west. The post is stable but not vertical, leaning north and west. A 5/8 inch bearing a cap "Schneider FIRM #0001" was found at the south edge of the base of the post. Given the leaning condition of the post, the exact horizontal position of the post is subject to interpretation by a field surveyor. The position of the rebar is over the portion of the post within the ground and was accepted as an accurate location of the original location of the post. Several stones were found around the base of the post, all of which appeared to be brace rocks for the post rather than specific section corner monuments. Another 5/8 inch rebar was found approximately 1 foot north and 2 feet west of the corner post and Schneider rebar.

It is noted that this corner falls 34.6 feet north of a straight line connecting the section corners approximately one-half mile to the east and west. No explanation is offered for this. The existing east-west fence is considered the dominant evidence for the N-S position of the corner and the existing north-south fence is considered the dominant evidence for the E-W position of the corner. The Schneider rebar was held as the precise location of the corner. This rebar was removed and a 36 inch long rebar was set vertically along side the post, driven into the south edge of the post below grade. The new rebar and the south edge of the post were encased in concrete for stability. Up to 2 feet of uncertainty may be associated with the relative position of this corner with interior monumentation in the adjoining subdivisions. However, uncertainty associated with the corner itself is only approximately 0.5 of a foot, reflecting variations in interpretation of the position of the wood post itself. This corner was originally established as a wood post in July, 1821.

*Kenneth E. Hedge*  
 \_\_\_\_\_  
 Kenneth E. Hedge, County Surveyor

*James S. Swift*  
 \_\_\_\_\_  
 James S. Swift, IN LS 20200054

July 20, 2011



Eagle Twp

Section 24 T18N, R2E
▲
Section 25 T18N, R2E

# SECTION CORNER RECORD

SE 400-1200

## BOONE COUNTY SURVEYOR'S OFFICE

State Plane grid coordinates NAD83 (NSRS 2007):

North: 1726108.76 East: 3188792.64 (U.S. survey feet)  
(corner 1 only)

Type of monument: Harrison, 4" disk 'Section Corner'  
Depth: flush with adjoining ground

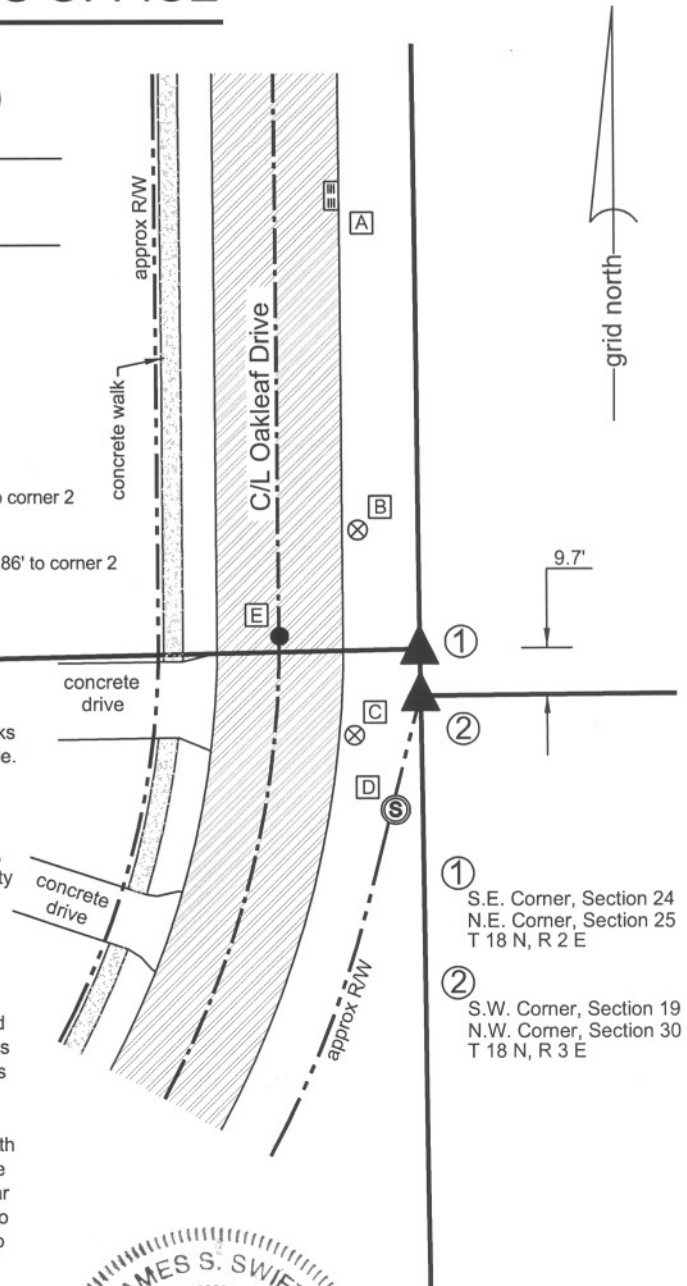
Indiana tie card references:  
IN02\_T18NR2E24\_80  
IN02\_T18NR2E25\_08

### CORNER WITNESS DETAIL

SCALE 1" = 40'

- A - Grate inlet, S.E. corner, top casting, chiseled "x", 92.90' to corner 1, 102.48' to corner 2
  - B - Boone County witness mark, flush, 27.85' to corner 1, 36.78' to corner 2
  - C - Boone County witness mark, flush, 22.62' to corner 1, 16.14' to corner 2
  - D - Sanitary manhole, N. edge, top of casting, chiseled "x", 31.34' to corner 1, 21.86' to corner 2
  - E - Center line monument (rebar), flush, 29.34' to corner 1, 31.92' to corner 2
- Boone County witness mark is a 3/8" diameter x 2' long rebar bearing a metal cap stamped "Boone County Witness Point."

The harrison monument was set in place of a rebar found. A BCS record of November 3, 10, 17, 1866 states "ReEstablished Set two Rocks one 6.5.3 in. marked +. Top Rock 20.15.9 in. marked on top and + on West side." No recent BCS tie cards were found for this corner. The transcribed notes from the original government survey with for township 18 north, range 3 east read "West Between Secs. 19 & 30. 82.60 Intersected Range line 15 lks S of post." The adjoining land in Boone County was platted in 1997 as Austin Oaks, Section 9, as recorded in Plat Book 9, page 46 in the Office of the Boone County Recorder. This plat shows the corner as a one inch iron pipe found. The reference to this monument agrees with the underlying boundary survey to this plat, which is recorded in Survey Book 1, pages 79-80. This survey shows the corner as a one inch iron pipe and also shows the closing section corner from range 3 east as being a 5/8 inch rebar, 9.7 feet north. This survey appears to reverse the two corners, showing the closing corner falling north of the standard corner, rather than south, per the government notes. Significant excavation was not performed at this corner as it is obvious that significant land disturbance has taken place and that the corners fall in an area of cut associated with the construction of Oakleaf Drive. Prior to monumentation, two rebars were found, both with caps stamped Schneider, FIRM 0001, the company which created both the aforementioned plat and underlying surveys. The rebars fit precisely with the locations of the iron pipe and rebar shown on the survey and the southerly rebar fits with the location of the iron pipe shown on the plat. The southerly rebar also falls at the westerly prolongation of an old fence to the east. Given that, prior to land disturbing activities, two monuments were found, at nearly the record closing distance apart, the southerly one of which fits with the local evidence in range 3 east in the form of the fence to the east and that this geometrical relationship fits with the government notes, the monuments were held as marking the respective corners, with the standard corner held as the northerly corner, per the government notes and the local evidence. This conclusion is supported the Hamilton County Surveyor's Office. Harrison monuments were set at both corners. The standard corner (Boone County) was set in the position of the northerly found rebar and the closing corner (Hamilton County) was set at the N-S dimension of the southerly closing rebar, but was placed on the range line, 0.1 foot east of the position of the rebar. The standard corner was monumented on August 27, 2009 and the closing corner was monumented, in cooperation with the Hamilton County Surveyor's Office on September 17, 2009. The standard corner was originally established as a wood post in 1819.



- ① S.E. Corner, Section 24  
N.E. Corner, Section 25  
T 18 N, R 2 E
- ② S.W. Corner, Section 19  
N.W. Corner, Section 30  
T 18 N, R 3 E



Eagle Township  
Boone County

Clay Township  
Hamilton County

Section 24 T18N, R2E	Section 19 T18N, R3E
Section 25 T18N, R2E	Section 30 T18N, R3E

*Kenneth E. Hedge*  
Kenneth E. Hedge, County Surveyor

*James S. Swift*  
James S. Swift, IN LS 20200054  
July 14, 2010