

SECTION CORNER RECORD

BOONE COUNTY SURVEYOR'S OFFICE

NW 200-800

State Plane grid coordinates NAD83 (2011):

North: 1756152.88 East: 3082491.88 (U.S. survey feet)

Type of monument: Iron plug in concrete

Depth: Flush with adjacent road surface

Indiana tie card references:

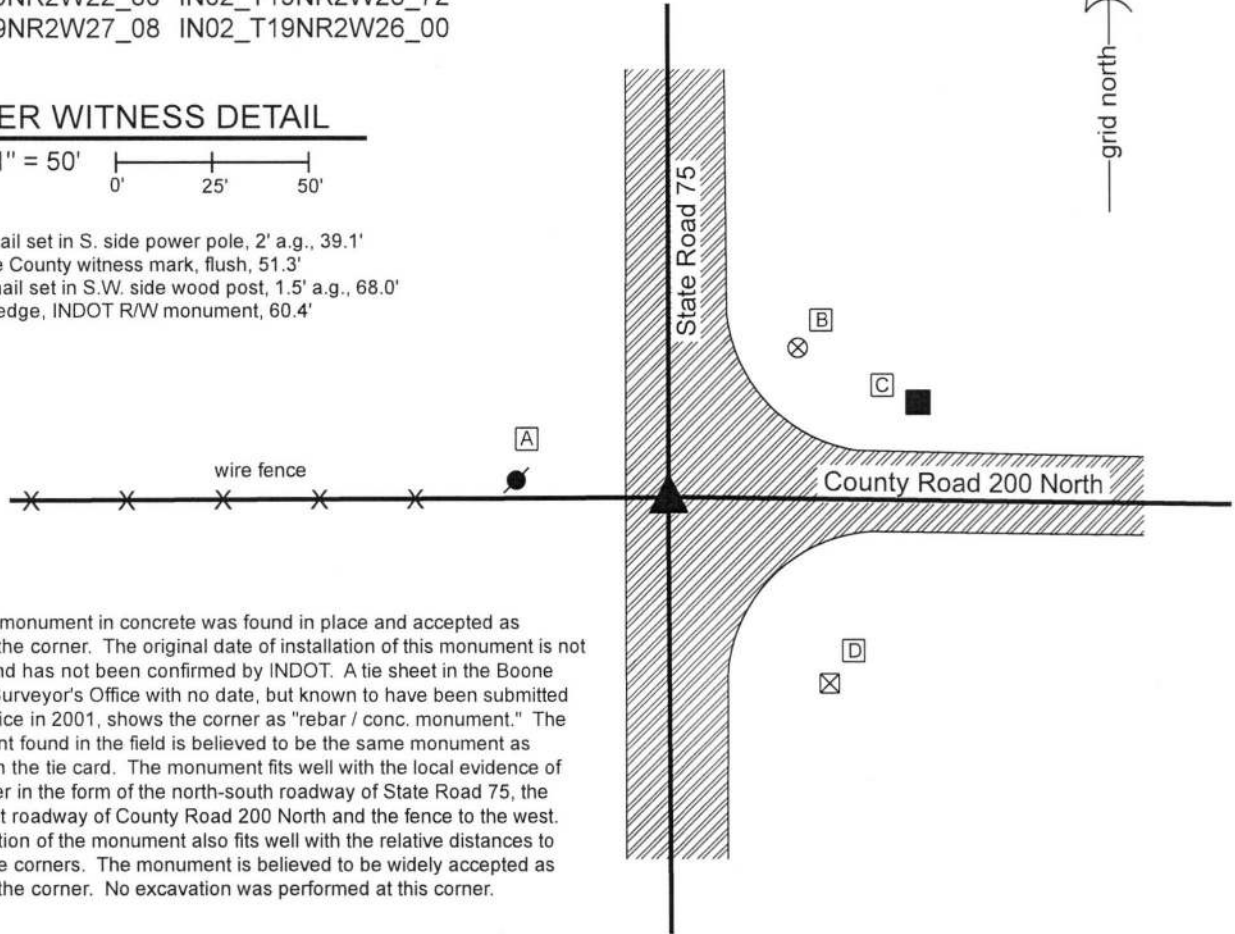
IN02_T19NR2W22_80 IN02_T19NR2W23_72

IN02_T19NR2W27_08 IN02_T19NR2W26_00

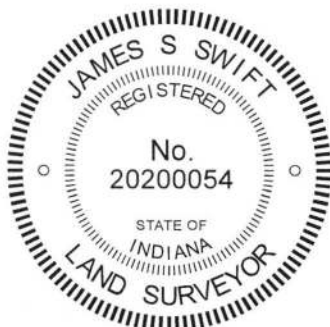
CORNER WITNESS DETAIL

SCALE 1" = 50'

- A - Mag nail set in S. side power pole, 2' a.g., 39.1'
- B - Boone County witness mark, flush, 51.3'
- C - Mag nail set in S.W. side wood post, 1.5' a.g., 68.0'
- D - N.W. edge, INDOT R/W monument, 60.4'



The iron monument in concrete was found in place and accepted as marking the corner. The original date of installation of this monument is not known and has not been confirmed by INDOT. A tie sheet in the Boone County Surveyor's Office with no date, but known to have been submitted to the office in 2001, shows the corner as "rebar / conc. monument." The monument found in the field is believed to be the same monument as shown on the tie card. The monument fits well with the local evidence of the corner in the form of the north-south roadway of State Road 75, the east-west roadway of County Road 200 North and the fence to the west. The position of the monument also fits well with the relative distances to proximate corners. The monument is believed to be widely accepted as marking the corner. No excavation was performed at this corner.



Kenneth E. Hedge
 Kenneth E. Hedge, County Surveyor

James S. Swift
 James S. Swift, IN LS 20200054
 July 3, 2018

Jefferson Township

| | |
|-------------------------|-------------------------|
| Section 22 T19N, R2W | Section 23 T19N, R2W |
| Section 27 T19N, R2W | Section 26 T19N, R2W |

SECTION CORNER RECORD

NW 200-850

BOONE COUNTY SURVEYOR'S OFFICE

State Plane grid coordinates NAD83 (2011):

North: 1756131.92 East: 3079869.21 (U.S. survey feet)

Type of monument: Harrison, 4" disk 'Section Corner'

Depth: Two inches above adjacent ground

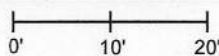
Indiana tie card references:

IN02_T19NR2W22_76 IN02_T19NR2W27_04

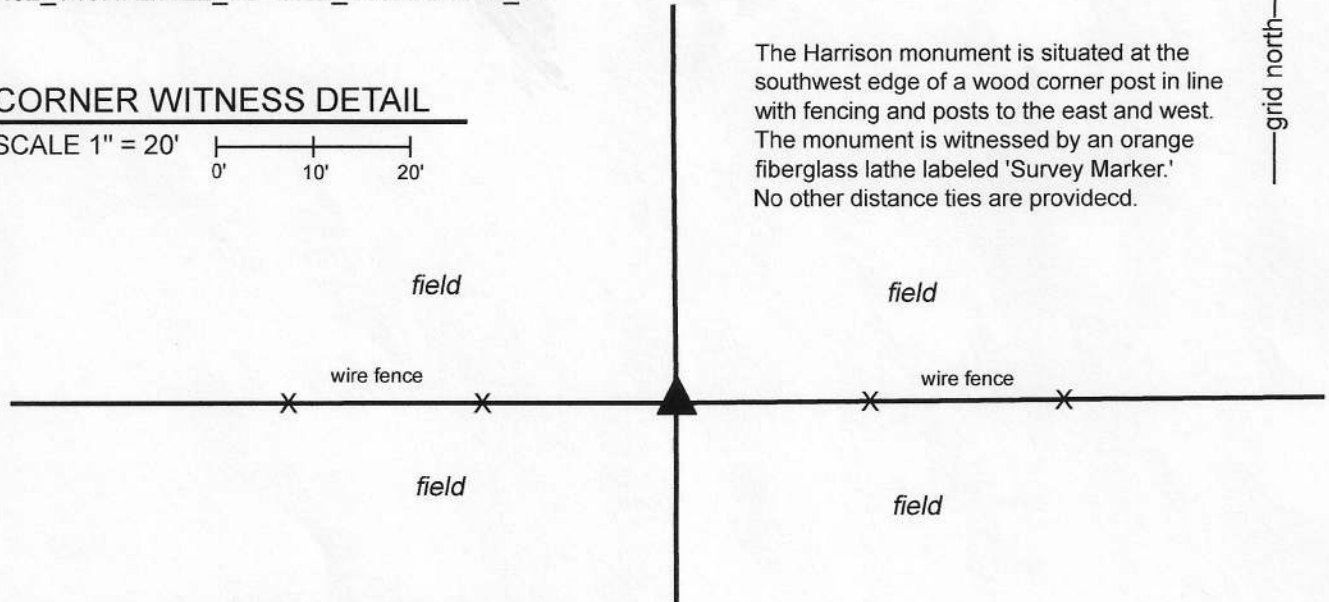


CORNER WITNESS DETAIL

SCALE 1" = 20'



The Harrison monument is situated at the southwest edge of a wood corner post in line with fencing and posts to the east and west. The monument is witnessed by an orange fiberglass lathe labeled 'Survey Marker.' No other distance ties are provided.



The Harrison monument was set in place of two stones found.

No specific descriptions of this corner were found in the BCS Surveyor's Record beyond the original establishment of the corner as a wood post in 1829. The corner is shown as the terminal point for measurements in an entry of 1917 which shows distances of 20.09 chains for the respective south lines of the east and west halves of the southwest quarter of section 22 and an entry of 1919 which shows identical distances for the respective north lines of the east and west halves of the northwest quarter of section 27. Neither recent BCS tie cards nor surveys found in the Office of the Boone County Recorder which reference the subject corner.

This corner was excavated on April 2 and 3, 2020. Prior to excavation, a wood post with fencing, partially standing, to the east and west as well as fencing cut to the north was found providing evidence of the corner. It was observed that position of the post is substantially south and east of the midpoint of a line connecting evidence of the section corners to the east and west. However, it was also observed that the post works remarkably well with the relative positions of substantial evidence of the corners approximately one-quarter and one-half mile west with respect to the aforementioned BCS entries of 1917 and 1919.

Excavation around the post revealed a large stone to the north of the post and two stones at the southwest edge of the post. The stone to the north does not appear to be a corner stone, being haphazardly oriented in the ground. The stones at the southwest edge of the post did appear to represent corner stones. The upper stone was 12 inches tall by 7 inches N-S by 9 inches E-W. The lower stone was 8 inches by 7 inches by 5 inches. Analysis of the evidence of ancient posts and fencing at several points along the quarter section lines to the east and west clearly indicated that the stones at the southwest edge of the post fit better with the evidence in the north-south dimension than did the corner post. This evidence indicated a position slightly south of the corner post. Even in the immediate vicinity of the corner, the fence evidence is more in line with the stones than the post. The stones were accepted as the best available evidence of the corner and are believed most likely to have been held as marking the corner for the 1917 and 1919 surveys. The stones were removed and replaced with a Harrison monument in the same position. It is noted that the corner post is no longer stable and that a 30 inch length of 5/8 inch rebar west set in the fencing slightly west of the corner to provide stability to the standing fence and post. This rebar does not represent evidence of the corner and is present near the corner exclusively for purposes of helping to hold up the standing fence.

Jefferson Township

Section 22
T19N, R2W

Section 27
T19N, R2W



Kenneth E. Hedge
Kenneth E. Hedge, County Surveyor

James S. Swift
James S. Swift, IN LS 20200054
April 8, 2020

SECTION CORNER RECORD

NW 200-900

BOONE COUNTY SURVEYOR'S OFFICE

State Plane grid coordinates NAD83 (2011):

North: 1756130.40 East: 3077219.52 (U.S. survey feet)

Type of monument: Harrison, 4" disk 'Section Corner'

Depth: One inch below adjacent road surface

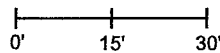
Indiana tie card references:

IN02_T19NR2W22_72 IN02_T19NR2W21_80

IN02_T19NR2W28_08 IN02_T19NR2W27_00

CORNER WITNESS DETAIL

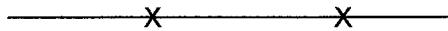
SCALE 1" = 30'



A - Boone County witness mark, flush, 18.6'

B - Mag nail set in E. side wood corner post, 2' a.g., 21.5'

C - Mag nail set in S. side power pole, 2' a.g., 78.1'



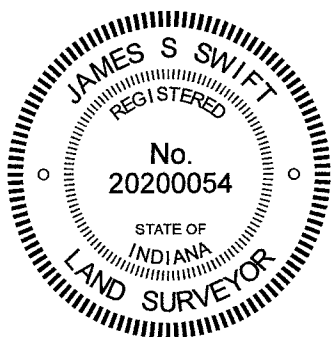
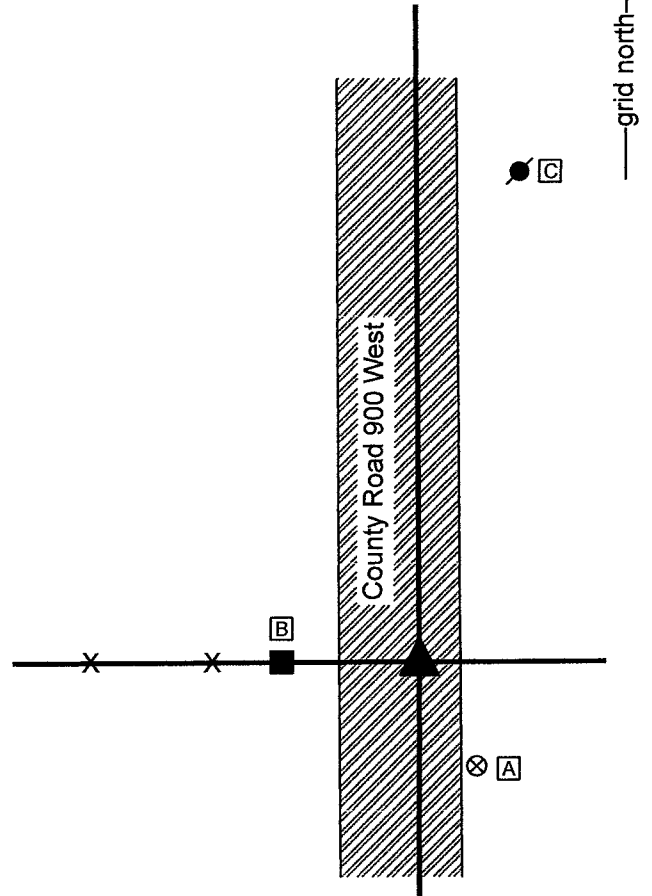
- wire fence

The Harrison monument was set over a stone found.

A BCS record dated 1917 states, with respect to this corner, "Set Rock. Under 7" x 8" x 9". Top 5" x 6" x 6" +." A BCS tie card August 26, 1969 states 'No Stone Located.'

This corner was excavated on September 23, 2021. Prior to excavation, a vertical section of railroad rail was found at 3 inches below grade. The rail is not mentioned in the 1969 tie card but was most likely set at that time by that crew, as setting railroad rails was a standard practice of BCS field crews from that era. Excavation revealed a stone found at 6 inches deep, east of the rail. The stone was in the fill material of the road bed, but was oriented in cardinal directions. The stone measured 7 inches E-W by 7 inches N-S by 4 inches tall, approximating but not quite matching the dimensions of the top rock described in the 1917 record. No specific marks were detected on the stone, perhaps due to the remarkably rough surface of the rock. Further excavation revealed another stone found directly below the top stone at 12 inches deep. The west edge of this stone was exposed. The stone was vertical and oriented in cardinal directions, measuring 9 inches tall by 7 inches N-S. The east-west dimension was measured as 7 inches at 3 inches down from the top of the stone. No specific marks were observed on the stone, nor were any called for in description. The stone was accepted as being the lower monument called for in the 1917 record and was held as marking the corner. The stone was left in place and a Harrison monument was set directly over the top, high point. The railroad rail, removed during excavation, had been 2.2 feet west of the stone. Both the stone and the rail were at the easterly prolongation of a fence to the west.

This corner was originally established as a wood post in 1829.



Kenneth E. Hedge
Kenneth E. Hedge, County Surveyor

James S. Swift
James S. Swift, IN LS 20200054
September 29, 2021

Jefferson Township

| | |
|-------------------------|-------------------------|
| Section 21 T19N, R2W | Section 22 T19N, R2W |
| Section 28 T19N, R2W | Section 27 T19N, R2W |

SECTION CORNER RECORD

NW 250-800

BOONE COUNTY SURVEYOR'S OFFICE

State Plane grid coordinates NAD83 (2011):

North: 1758810.30 East: 3082493.85 (U.S. survey feet)

Type of monument: Iron plug in concrete

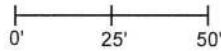
Depth: flush with adjacent road surface

Indiana tie card references:

IN02_T19NR2W22_44 IN02_T19NR2W23_36

CORNER WITNESS DETAIL

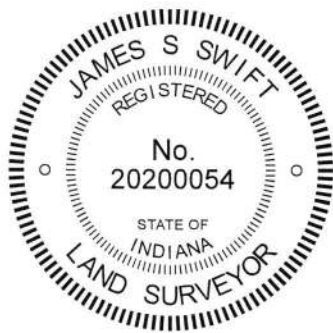
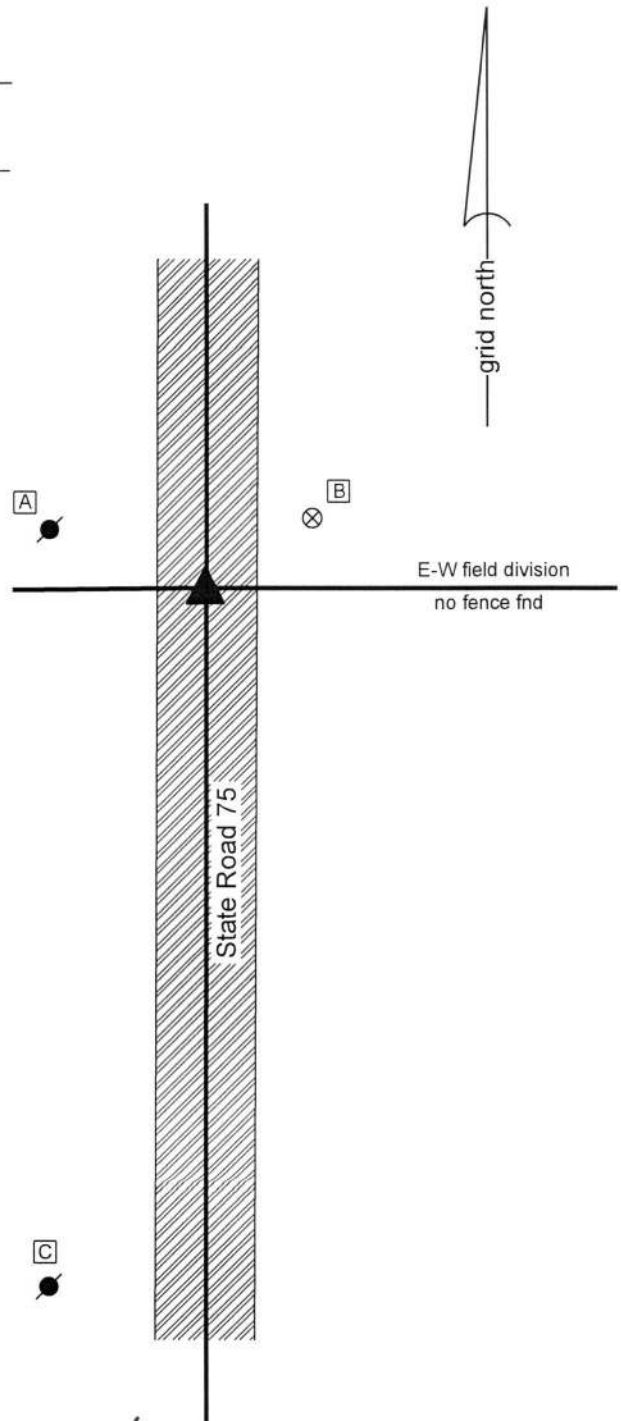
SCALE 1" = 50'



- A - Mag nail set in E. side power pole, 2' a.g., 41.5'
- B - Boone County witness mark, flush, 32.9'
- C - Mag nail set in E. side power pole, 2' a.g., 185.9'

Boone County witness mark is a 3/8" diameter x 2' long rebar bearing a metal cap stamped "Boone County Witness Point."

The iron monument in concrete was found in place and accepted as marking the corner. The original date of installation of this monument is not known and has not been confirmed by INDOT. A tie sheet in the Boone County Surveyor's Office with no date, but known to have been submitted to the office in 2001, shows the corner with no statement of the type of monument. The post and power poles which represent the reference objects for the distance ties on the undated tie card were removed in 2017 but the position of the monumented corner was confirmed with respect to those distance ties prior to removal of the references. The monument found in the field is believed to be at the same position as the corner shown on the tie card. The monument fits well with the local evidence of the corner in the form of the north-south roadway of State Road 75 and a field division to the east (shown as an existing fence on the undated tie card). The position of the corner fits well with the relative distances to proximate corners. The monument is believed to be widely accepted as marking the corner. No excavation was performed at this corner.



Kenneth E. Hedge
Kenneth E. Hedge, County Surveyor

James S. Swift
James S. Swift, IN LS 20200054

July 3, 2018

Jefferson Township

| | |
|-------------------------|-------------------------|
| Section 22 T19N, R2W | Section 23 T19N, R2W |
|-------------------------|-------------------------|

SECTION CORNER RECORD

NW 250-900

BOONE COUNTY SURVEYOR'S OFFICE

State Plane grid coordinates NAD83 (2011):

North: 1758783.19 East: 3077191.07 (U.S. survey feet)

Type of monument: Harrison, 4" disk 'Section Corner'

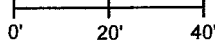
Depth: One inch below adjacent road surface

Indiana tie card references:

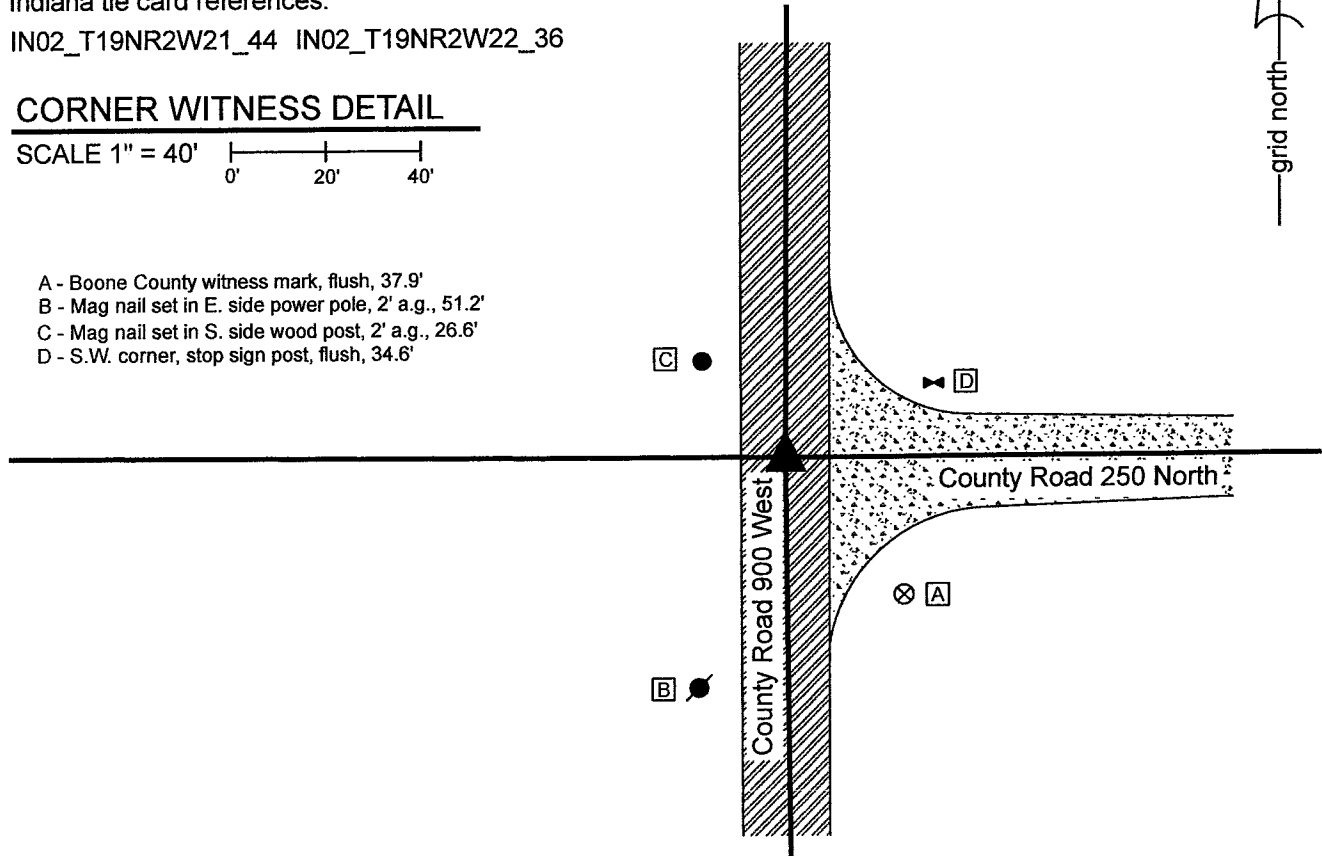
IN02_T19NR2W21_44 IN02_T19NR2W22_36

CORNER WITNESS DETAIL

SCALE 1" = 40'



- A - Boone County witness mark, flush, 37.9'
- B - Mag nail set in E. side power pole, 2' a.g., 51.2'
- C - Mag nail set in S. side wood post, 2' a.g., 26.6'
- D - S.W. corner, stop sign post, flush, 34.6'



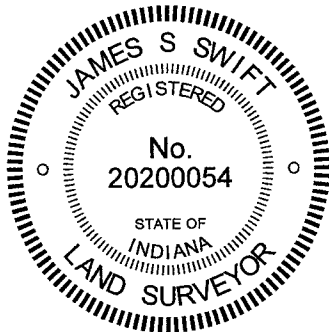
The Harrison monument was set in place of a vertical section of railroad rail found.

A BCS record dated August 25, 1865 states, with respect to this corner, "Found from stump of one tree." A BCS tie card dated August 26, 1969 states, 'No Stone Located.'

This corner was excavated on September 23, 2021. Prior to excavation, a railroad spike was found at 2 inches below grade at the approximate center of the intersection of the two roads. Excavation revealed a vertical section of railroad rail found at 10 inches deep, slightly north of the railroad spike. Further excavation of a 5-foot N-S by 5-foot E-W area, excavated to the clay layer below the road bed at 15 inches deep, revealed no further evidence of the corner.

The railroad rail is not mentioned on the 1969 tie card, but it is known that setting such a monument was standard practice for BCS survey crews of that era. The railroad rail fit with local evidence of the corner, being at the intersection of the two county roads, and fit well with the relative positions of proximate corners. The railroad rail was held as the best available evidence of the corner. Both the spike and the rail were removed during excavation. The rail was replaced with a Harrison monument in the same horizontal position. The spike had been 0.2 foot west and 0.3 foot south of the center of the rail. The spike appears to have been held as the corner on a survey by Jerry L. Carter recorded as Instrument 200600005905 in the Office of the Boone County Recorder.

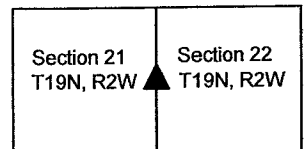
This corner was originally established as a wood post in 1829.



Kenneth E. Hedge
 Kenneth E. Hedge, County Surveyor

James S. Swift
 James S. Swift, IN LS 20200054
 September 29, 2021

Jefferson Township



SECTION CORNER RECORD

BOONE COUNTY SURVEYOR'S OFFICE

NW 300-800

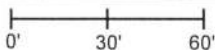
State Plane grid coordinates NAD83 (2011):
 North: 1761457.81 East: 3082495.68 (U.S. survey feet)

Type of monument: Iron plug in concrete
 Depth: Flush with adjacent road surface

Indiana tie card references:
 IN02_T19NR2W15_80 IN02_T19NR2W14_72
 IN02_T19NR2W22_08 IN02_T19NR2W23_00

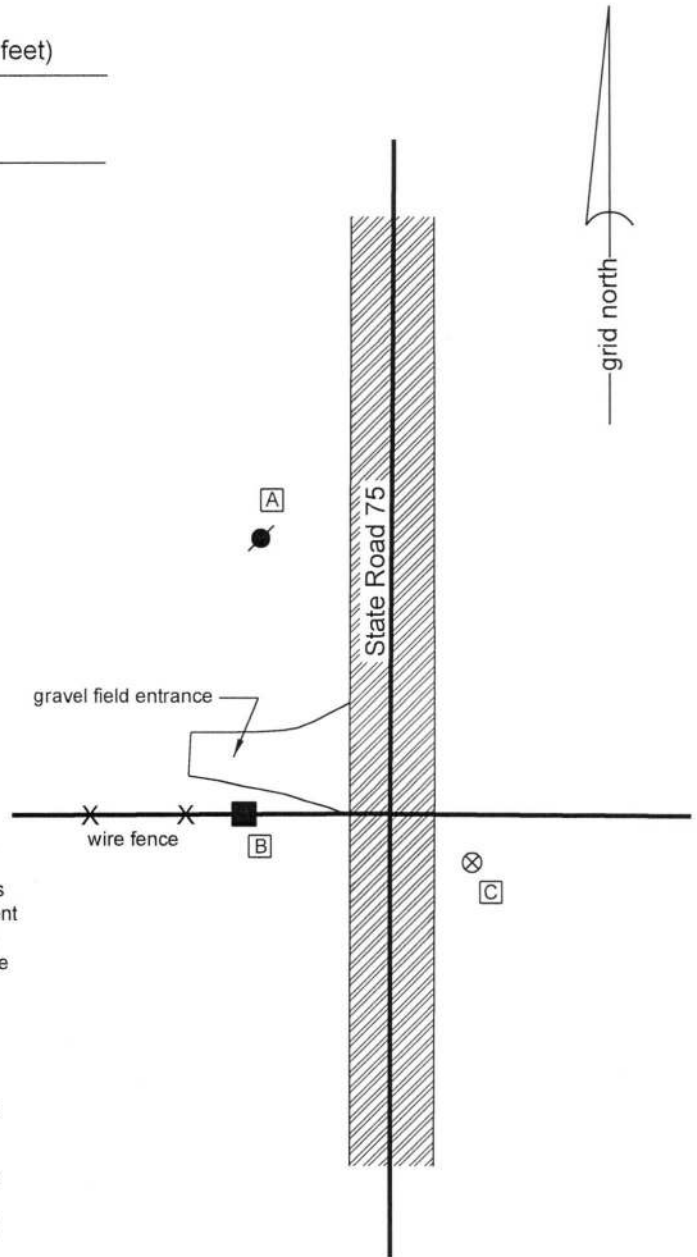
CORNER WITNESS DETAIL

SCALE 1" = 60'

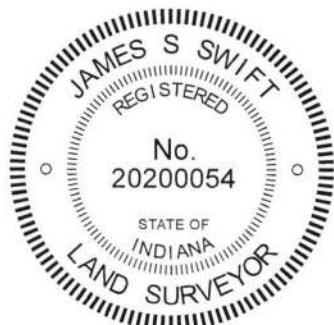


- A - Mag nail set in S.E. side power pole, 2' a.g., 92.7'
- B - Mag nail set in E. side wood post, 1.5' a.g., 41.9'
- C - Boone County witness mark, flush, 30.0'

Boone County witness mark is a 3/8" diameter x 2' long rebar bearing a metal cap stamped "Boone County Witness Point."



The iron monument in concrete was found in place and accepted as marking the corner. The original date of installation of this monument is not known and has not been confirmed by INDOT. A tie sheet in the Boone County Surveyor's Office with no date, but known to have been submitted to the office in 2001, shows the corner with no statement of the type of monument. The power poles which represent two of the reference objects for the distance ties on the undated tie card were removed in 2017 but the position of the monumented corner was confirmed with respect to those distance ties prior to removal of the references. The monument found in the field is believed to be at the same position as the corner shown on the tie card. The monument fits well with the local evidence of the corner in the form of the north-south roadway of State Road 75 and the fence to the west. The position of the corner fits well with the relative distances to proximate corners. The monument is believed to be widely accepted as marking the corner. No excavation was performed at this corner.



Kenneth E. Hedge
 Kenneth E. Hedge, County Surveyor

James S. Swift
 James S. Swift, IN LS 20200054
 July 3, 2018

Jefferson Township

| | |
|-------------------------|-------------------------|
| Section 15 T19N, R2W | Section 14 T19N, R2W |
| Section 22 T19N, R2W | Section 23 T19N, R2W |

SECTION CORNER RECORD

NW 300-850

BOONE COUNTY SURVEYOR'S OFFICE

State Plane grid coordinates NAD83 (2011):

North: 1761443.76 East: 3079815.81 (U.S. survey feet)

Type of monument: Harrison, 4" disk 'Section Corner'

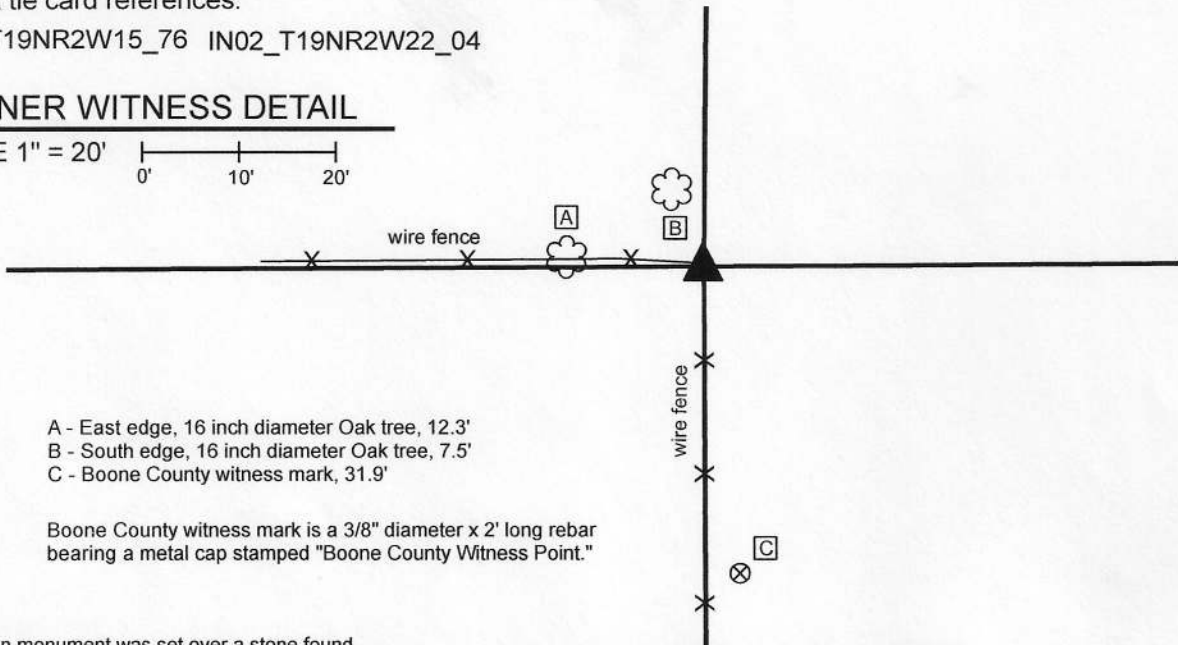
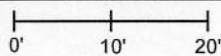
Depth: Seven inches above adjacent ground but slightly below the tops of adjacent rocks

Indiana tie card references:

IN02_T19NR2W15_76 IN02_T19NR2W22_04

CORNER WITNESS DETAIL

SCALE 1" = 20'



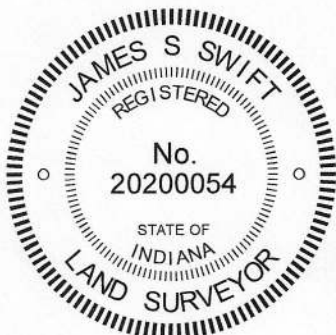
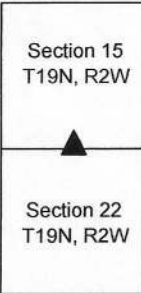
- A - East edge, 16 inch diameter Oak tree, 12.3'
- B - South edge, 16 inch diameter Oak tree, 7.5'
- C - Boone County witness mark, 31.9'

Boone County witness mark is a 3/8" diameter x 2' long rebar bearing a metal cap stamped "Boone County Witness Point."

The Harrison monument was set over a stone found.

No specific descriptions of this corner were found in the BCS Surveyor's Record beyond the original establishment of the corner as a wood post in 1829. The corner is shown as the terminal point for measurements in entries of 1833, 1857, 1895 and 1929, indicating that some monument was present from which to measure at those times. Neither recent BCS tie cards nor surveys recorded in the Boone County Recorder's Office were found referencing this corner. Excavation was performed at this corner on April 2 and 3, 2020. A wood corner post at the intersection of fence to the south and west was found providing evidence of the corner. The post did not appear to be ancient and was observed to be approximately 30 feet west of the midpoint of a line connecting substantial evidence of the section corners to the east and west. However, the position of the post was found to work well with the relative positions of evidence of the section corner to the west and an ancient wood corner post providing evidence of the quarter-quarter corner approximately one-quarter mile west of the corner. This set of evidence also fit reasonably well with the distances reported in the aforementioned BCS entries. It is clear from the combination of found physical evidence and the BCS distance entries that the existing fence intersection is much better evidence of the position of the corner held at various times previously than would be a computed midpoint of the line connecting the section corners to the east and west. It is noted that a large pile of small to medium sized granite rocks was found piled around the post prior to excavation. The rocks were displaced in the immediate vicinity of the post. Numerous rocks were found haphazardly embedded in the ground up to approximately 8 inches deep. During excavation, it was observed that the base of the post is not substantially embedded ground which may account for why the post was leaning toward the west. Excavation did reveal one notable stone which was clearly different in orientation and character from the other stones. This stone was found at 12 inches deep, slightly southeast of the base of the post. The stone did not appear to be bracing the post and was observed to be vertical and oriented in cardinal directions. The stone is 12 inches N-S by 12 inches E-W on the top and 14 inches tall, as measured on the north side. No specific marks were found on the stone but the character of the stone clearly appeared to represent a corner stone, not just a haphazardly placed rock. This stone was accepted as the best available evidence of the corner. The stone was left in place. The top several inches of the stone and the entire north side of the stone were anchored in concrete along with numerous small rocks and three 3/8 inch diameter rebars which were driven along the north and south sides of the primary stone. A Harrison monument, attached to the stone via said concrete, rocks and rebar, was set directly above the top, center of the stone. Numerous rocks from the aforementioned large rock pile were placed around the monument. The base of the corner post is approximately one foot northwest of the Harrison monument.

Jefferson Township



Kenneth E. Hedge
 Kenneth E. Hedge, County Surveyor

James S. Swift
 James S. Swift, IN LS 20200054

April 8, 2020