

# SECTION CORNER RECORD

# SW 300-800

## BOONE COUNTY SURVEYOR'S OFFICE

State Plane grid coordinates NAD83 (2011):

North: 1729460.12 East: 3082600.88 (U.S. survey feet)

Type of monument: INDOT section corner monument (iron pin in concrete)

Depth: Flush with adjacent road surface

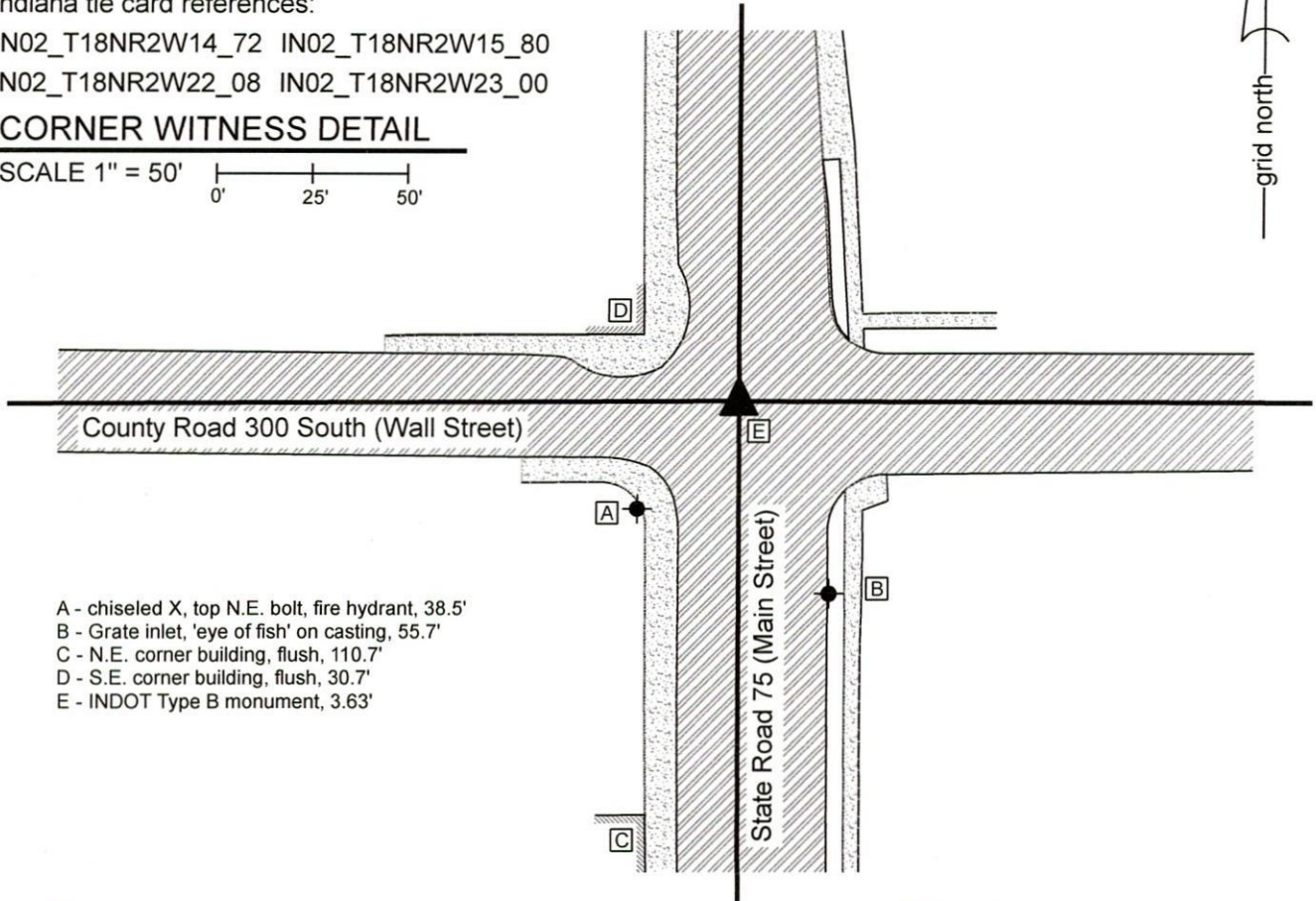
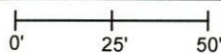
Indiana tie card references:

IN02\_T18NR2W14\_72 IN02\_T18NR2W15\_80

IN02\_T18NR2W22\_08 IN02\_T18NR2W23\_00

### CORNER WITNESS DETAIL

SCALE 1" = 50'



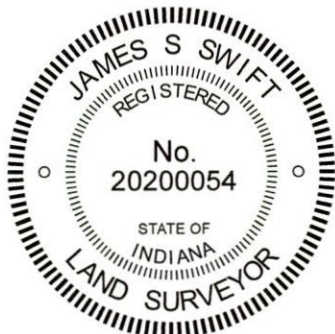
- A - chiseled X, top N.E. bolt, fire hydrant, 38.5'
- B - Grate inlet, 'eye of fish' on casting, 55.7'
- C - N.E. corner building, flush, 110.7'
- D - S.E. corner building, flush, 30.7'
- E - INDOT Type B monument, 3.63'

The INDOT section corner monument (iron pin in concrete) was set by contractors in the position of an INDOT Type B monument which formerly marked the position of this corner.

A BCS record of February 10-11, 1873 states, with respect to this corner, "Reest. cor secs 14, 15, 22 and 23. Set two rocks. One rock 17.12.10+ Other 17, 7, 6 +. Found where digging the stake I had driven about ten years before where running road west from it."

A BCS tie card dated 1952 shows the corner with ties to adjacent buildings but does not specify what monument was found or set. An associated entry in the BCS Surveyor's Record dated August 8, 1952 shows the corner as "stone" with identical measurements to the buildings as shown on the tie card. A BCS tie card dated December, 2003 shows the corner as a Type "C" monument, with one tie in common with the 1952 record. The monument referred to in this record is more specifically a Type B monument and was found in good condition prior to excavation and removal associated with the reconstruction of State Road 75 through the town of Advance in 2018-2019. The position of the INDOT Type B monument was reset by this office in December 2019.

The iron pin in concrete was set by contractors at this position the same month. A Type B monument was also set by contractors to mark centerline control at a position 3.63 feet SSE of the iron pin in concrete. The pin in concrete marks the corner. The Type B monument does not mark the corner. This corner was originally established as a wood post in 1820.



*Kenneth E. Hedge*  
 Kenneth E. Hedge, County Surveyor

*James S. Swift*  
 James S. Swift, IN LS 20200054  
 June 17, 2020

Jackson Township

Section 15 T18N, R2W	Section 14 T18N, R2W
Section 22 T18N, R2W	Section 23 T18N, R2W

# SECTION CORNER RECORD

SW 300-850

## BOONE COUNTY SURVEYOR'S OFFICE

State Plane grid coordinates NAD83 (2011):

North: 1729451.52 East: 3079966.41 (U.S. survey feet)

Type of monument: Harrison, 4" disk 'Section Corner'

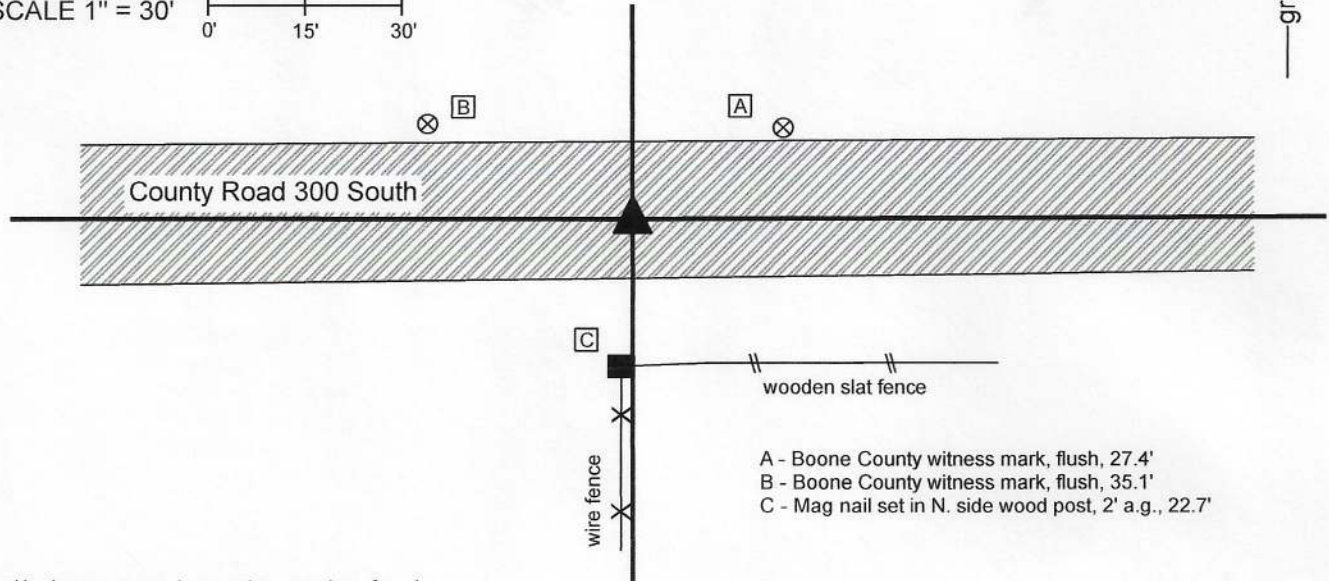
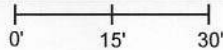
Depth: One inch below adjacent road surface

Indiana tie card references:

IN02\_T18NR2W15\_76 IN02\_T18NR2W22\_04

### CORNER WITNESS DETAIL

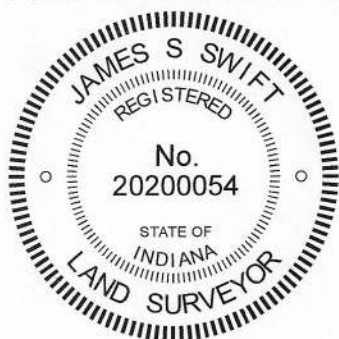
SCALE 1" = 30'



The Harrison monument was set over a stone found.

A BCS record of February 10-11, 1873 states, with respect to this corner, "Reest from Elm (green), Ash stump here. Set rock 15,8,5 +." A subsequent record, dated November 13, 1893 states "found from stump of white oak, lower rock there. Set rock + 20.16.9 over the old one." Another record, dated June 13, 1916, states "Rock was found but was found to be 6 lks east of the true point in measuring from E to G but was not reestablished." It is noted that the two earliest records appear to be in conflict, as the subsequent record calls for an oak stump and mentions the lower rock, whereas the earlier record does not reference either an oak stump or a lower and upper rock. The statement in the 1916 record that the stone was found to be 6 links (3.96 feet) too far east appears to reference the position of the corner as found with respect to the midpoint of the line connecting the southeast and southwest corners of section 15. No recent BCS tie cards were found referencing this corner.

Excavation was performed at this corner on June 26, 2020. Prior to excavation, a mag nail was found at the surface of the road, generally in-line with a fence to the south. It is noted that the fence is not ancient and appears to have been installed relatively recently. Excavation revealed no further evidence directly below the mag nail, but did reveal a stone found at 15 inches deep, east of the mag nail. The stone was 14 inches tall (as measured on the north side) by 14 inches E-W by 10 inches N-S. The north side of the stone was flat and vertical and a distinct etched "+" mark was observed on the north side, near the top. The stone was fully embedded in the clay layer below the road bed, with the top of the stone coincident with the bottom of the road bed. Fragments of a wood stake were found adjacent to the north side of the stone. The position of the stone is approximately 3 feet east and 5 feet south of a computed midpoint connecting the section corners to the east and west, generally matching, in the east-west dimension, the 1916 reference of the stone being 6 links east, as measured from G to E (section 15). The stone appeared to have been purposely set to mark the corner and matched the characteristics of other corner stones found, being vertical, oriented in cardinal directions and bearing an etched "+" mark. Probing did not indicate the presence of another stone below. No explanation is offered as to why the found stone did not match the dimensions of the stones called in the 1873 and 1893 records, other than to note the apparent discrepancies as noted above with respect to those records. The stone was accepted as the best available evidence of the corner and was held as marking the corner. The stone was left in place and a Harrison monument was set over the top of the stone, centered on the top of the stone in the N-S dimension, and directly in line with the "+" mark on the north side. The mag nail, removed during excavation, had been 0.2 foot north and 1.5 foot west of the position held as the corner. No additional evidence was found below the nail. This corner was originally established as a wood post in 1820.



*Kenneth E. Hedge*  
 Kenneth E. Hedge, County Surveyor

*James S. Swift*  
 James S. Swift, IN LS 20200054  
 July 7, 2020

Jackson Township

Section 15  
T18N, R2W

Section 22  
T18N, R2W

# SECTION CORNER RECORD

SW 300-900

## BOONE COUNTY SURVEYOR'S OFFICE

State Plane grid coordinates NAD83 (2011):

North: 1729453.58 East: 3077325.86 (U.S. survey feet)

Type of monument: Harrison, 4" disk 'Section Corner'

Depth: One inch below adjacent road surface

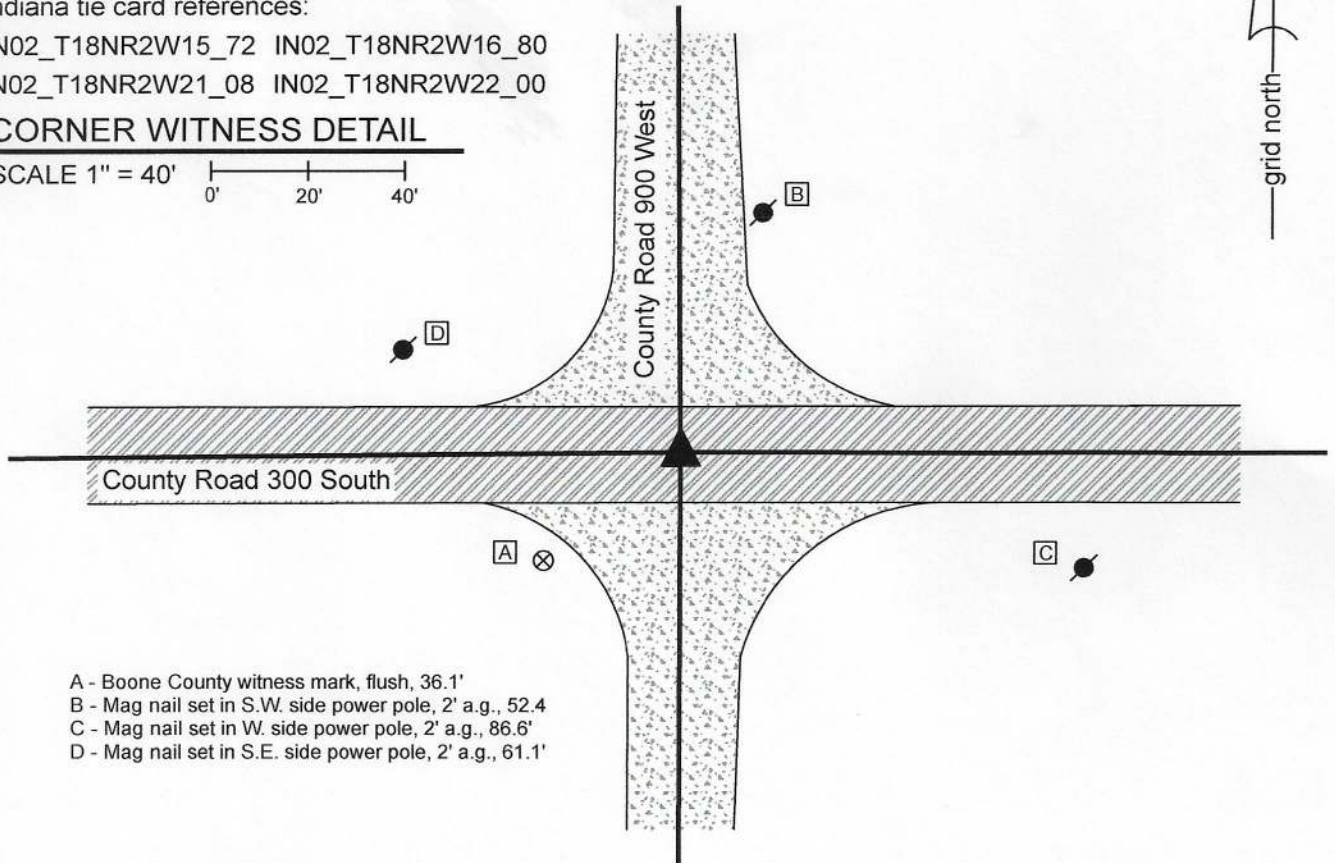
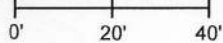
Indiana tie card references:

IN02\_T18NR2W15\_72 IN02\_T18NR2W16\_80

IN02\_T18NR2W21\_08 IN02\_T18NR2W22\_00

### CORNER WITNESS DETAIL

SCALE 1" = 40'



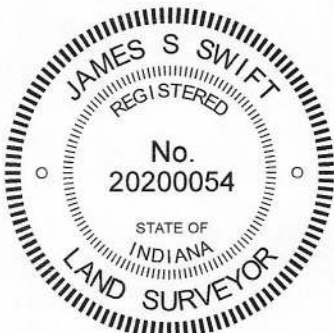
- A - Boone County witness mark, flush, 36.1'
- B - Mag nail set in S.W. side power pole, 2' a.g., 52.4'
- C - Mag nail set in W. side power pole, 2' a.g., 86.6'
- D - Mag nail set in S.E. side power pole, 2' a.g., 61.1'

The Harrison monument was set over a stone found.

A BCS record dated April 18-19, 1870 states, with respect to this corner, "Reestablished from stump of Maple. Set Rock 13.10.5 +." A BCS tie card dated August 25, 1967 states "No stone."

This corner was excavated on June 26, 2020. Prior to excavation, a mag nail was found at the surface of the road at the intersection of the two county roads. Excavation revealed a vertical section of railroad rail found at 15 inches deep, directly below the mag nail found at the surface. Further excavation revealed a stone found at 19 inches deep, slightly east of the rail and nail. With the top 9 inches of the stone exposed, it measured 10 inches E-W by 5 inches N-S with a distinct etched "+" mark on top. Fragments of a wood stake were found along the south edge of the stone. The stone was accepted as being the same monument as described in the 1870 record and was held as marking the corner. The stone was left in place and a Harrison monument was set directly over the etched mark on the top of the stone. The nail and rail, both removed during excavation, had been 0.6 foot west of the mark on the stone. Though the 1967 tie card states simply, "No stone", it is believed most likely that the vertical section of railroad rail was set in association with the creation of that tie card. The call of "no stone" is erroneous, as the stone described in the 1970 record was present, adjacent to the rail.

This corner was originally established as a wood post in 1821.



*Kenneth E. Hedge*  
 Kenneth E. Hedge, County Surveyor

*James S. Swift*  
 James S. Swift, IN LS 20200054  
 July 7, 2020

Jackson Township

Section 16 T18N, R2W	Section 15 T18N, R2W
Section 21 T18N, R2W	Section 22 T18N, R2W

# SECTION CORNER RECORD

## BOONE COUNTY SURVEYOR'S OFFICE

SW 350-800

State Plane grid coordinates NAD83 (2011):  
 North: 1726814.07 East: 3082611.32 (U.S. survey feet)

Type of monument: INDOT Type B Monument  
 Depth: Flush with adjacent road surface

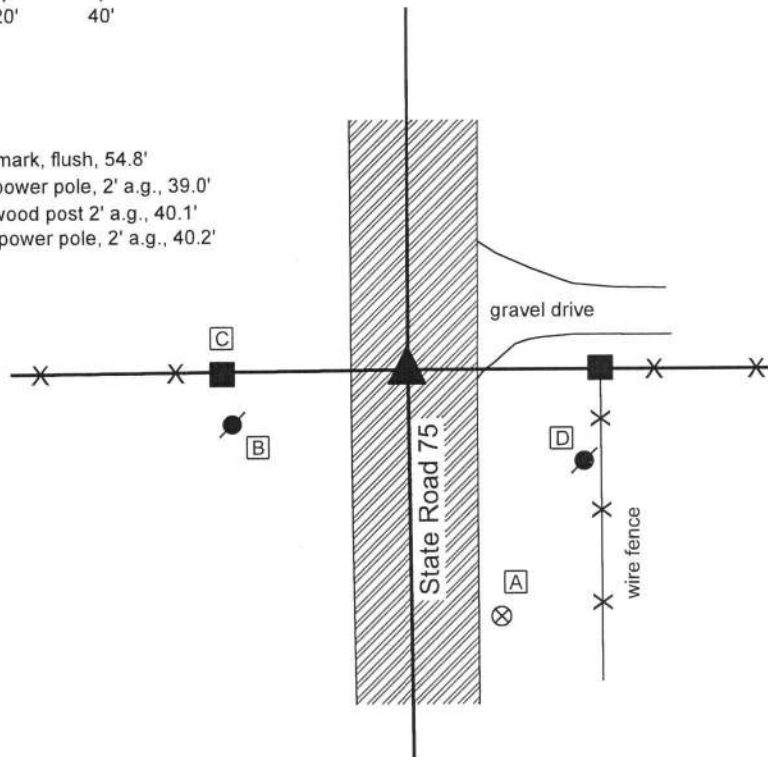
Indiana tie card references:  
 IN02\_T18NR2W22\_44 IN02\_T18NR2W23\_36

### CORNER WITNESS DETAIL

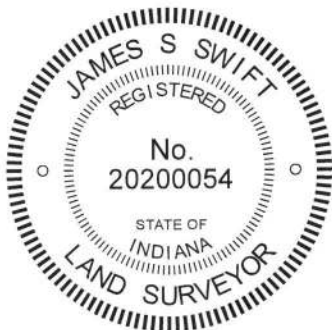
SCALE 1" = 40'



- A - Boone County witness mark, flush, 54.8'
- B - Mag nail set in E. side power pole, 2' a.g., 39.0'
- C - Mag nail set in E. side wood post 2' a.g., 40.1'
- D - Mag nail set in W. side power pole, 2' a.g., 40.2'



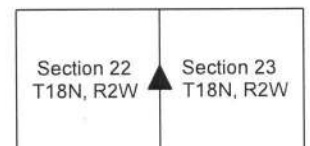
The INDOT Type B monument was found in place.  
 A BCS tie card dated December, 2003 shows the corner to be a 1 inch square rod, 8 inches deep in the center of S.R. 75, in line with fences to the east and west. In 2004 or later, INDOT replaced the rod with a Type B monument in the same position. The origin of the square rod is not known and excavation was not performed at this corner, being in a state highway. The position of the monument fits with local evidence, being in the center of the roadway and generally in-line with the fences to the east and west. The Type B monument is held as marking the corner.  
 This corner was originally established as a wood post in 1820.



*Kenneth E. Hedge*  
 Kenneth E. Hedge, County Surveyor

*James S. Swift*  
 James S. Swift, IN LS 20200054  
 March 13, 2019

Jackson Township



# SECTION CORNER RECORD

SW 350-900

## BOONE COUNTY SURVEYOR'S OFFICE

State Plane grid coordinates NAD83 (2011):

North: 1726810.63 East: 3077318.04 (U.S. survey feet)

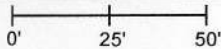
Type of monument: Harrison, 4" disk 'Section Corner'

Depth: Six inches below adjacent road surface

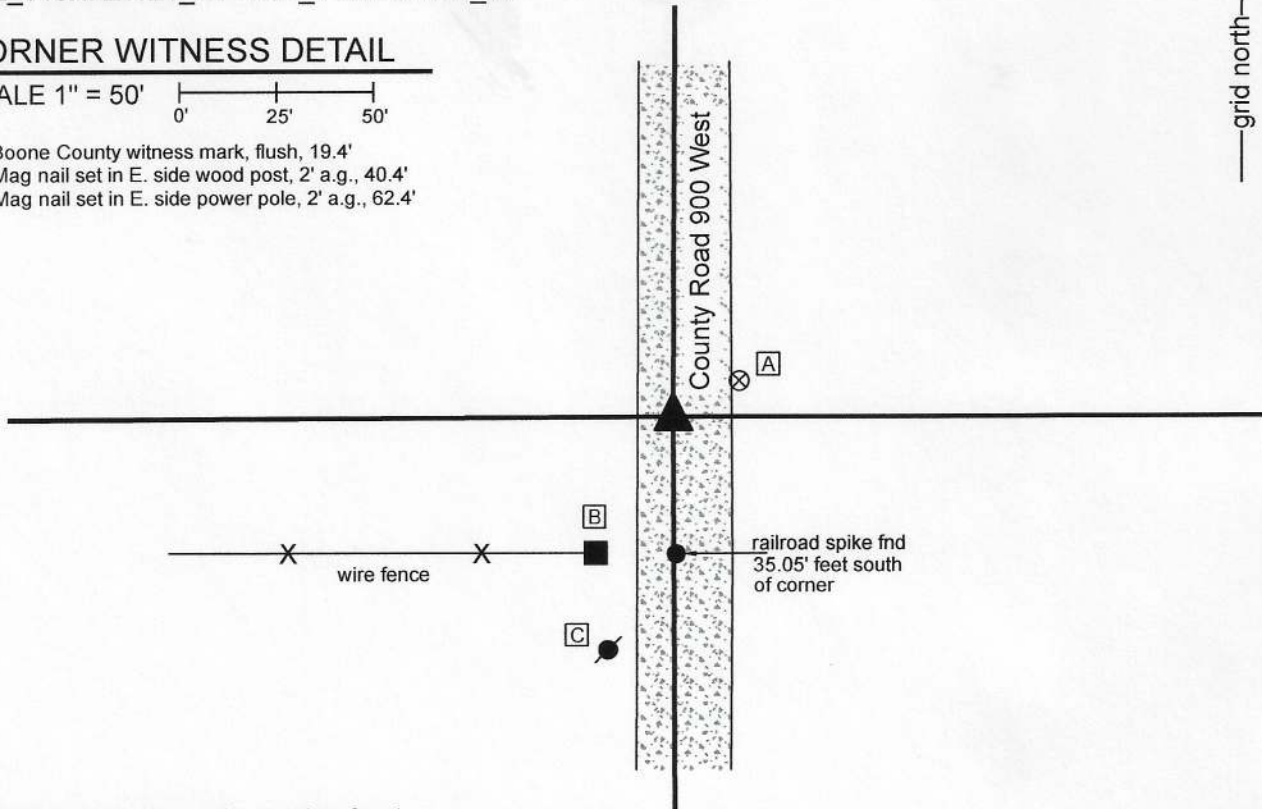
Indiana tie card references:

IN02\_T18NR2W21\_44 IN02\_T18NR2W22\_36

### CORNER WITNESS DETAIL

SCALE 1" = 50' 

- A - Boone County witness mark, flush, 19.4'
- B - Mag nail set in E. side wood post, 2' a.g., 40.4'
- C - Mag nail set in E. side power pole, 2' a.g., 62.4'

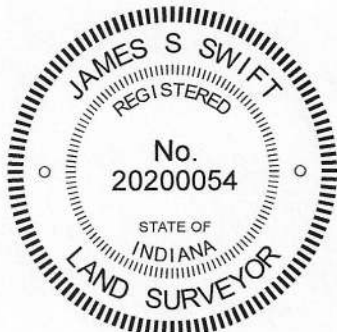



The Harrison monument was set over a stone found.

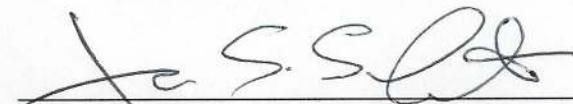
A BCS record dated April 20-22, 1870 states, with respect to this corner, "Reest. from Beech. Set a rock 8.5-1/2.4 +. Top rock 17.14.8 +." No recent BCS tie cards were found referencing this corner.

Excavation was performed at this corner on March 20, 2020. Prior to excavation, a 5/8 inch rebar was found at 2 inches below grade, bent and leaning toward the west. The position of the rebar fit generally with remote fences to the east and west and was found to be approximately 2 rods north of a fence to the west, immediately west of the county road. The position of the rebar fit with deed references for the property to the west. Excavation in the vicinity of the found rebar revealed the lower stone described in the 1870 record at 19 inches deep. The stone measured 8 inches E-W by 5-1/2 inches N-S by 4 inches thick with a distinct etched "+" mark on the top, center. Evidently the upper stone has been previously removed, presumably by road grading equipment. It is noted that when two stones were set by the Boone County Surveyor in the late 1800s, one on top of the other, typically the top stone is found to be vertical and the lower stone is found to be horizontal. The found stone matched the dimensions of the 1870 record as well as the typical, horizontal orientation for a lower stone. The stone was accepted as marking the corner. It was left in place and a Harrison monument was set directly over the etched mark on the center of the top of the stone. The rebar, removed during excavation, had been approximately 1.3 feet south and 0.6 foot east of the mark on the stone. It is noted that the rebar was 11 inches long and leaning substantially to the west.

This corner was originally established as a wood post in 1820.



  
 Kenneth E. Hedge, County Surveyor

  
 James S. Swift, IN LS 20200054  
 April 29, 2020

Jackson Township

Section 21 T18N, R2W	Section 22 T18N, R2W
-------------------------	-------------------------

# SECTION CORNER RECORD

## BOONE COUNTY SURVEYOR'S OFFICE

SW 400-800

State Plane grid coordinates NAD83 (2011):  
 North: 1724169.54 East: 3082642.75 (U.S. survey feet)

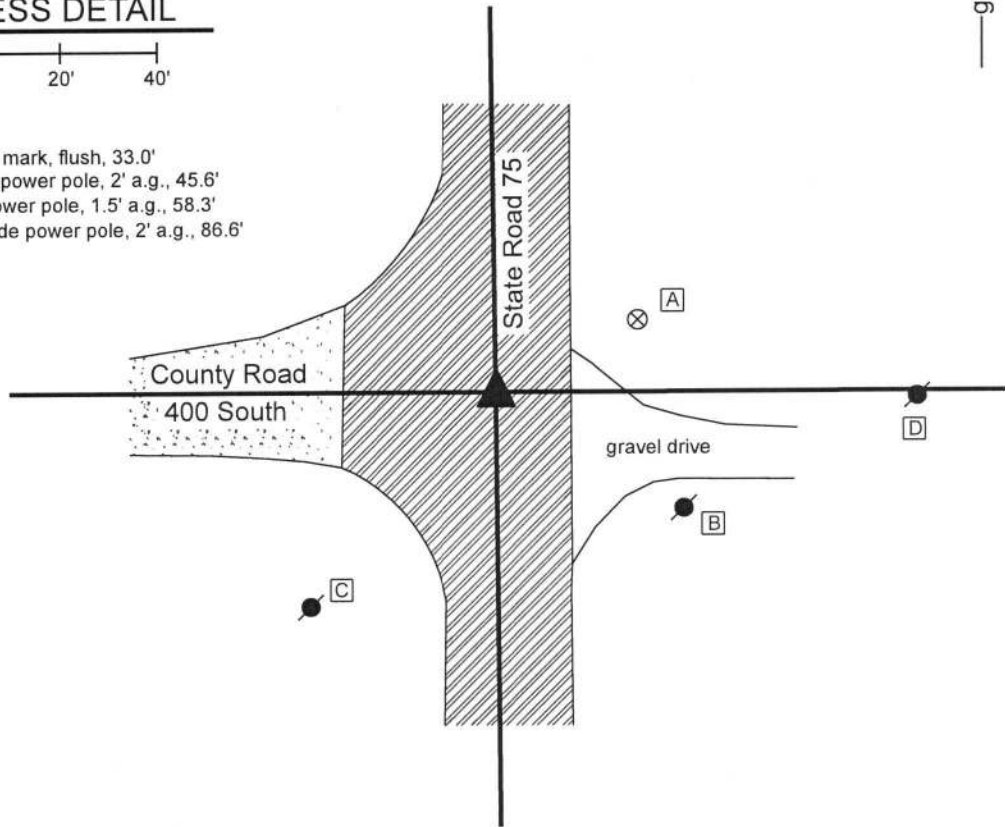
Type of monument: INDOT Type B monument  
 Depth: flush with adjacent road surface

Indiana tie card references:  
 IN02\_T18NR2W22\_80 IN02\_T18NR2W23\_72  
 IN02\_T18NR2W27\_08 IN02\_T18NR2W26\_00

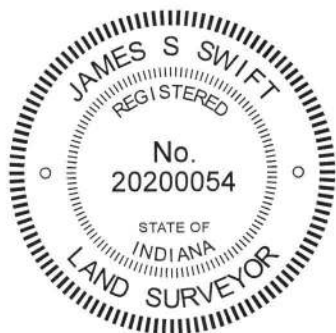
### CORNER WITNESS DETAIL

SCALE 1" = 40'

- A - Boone County witness mark, flush, 33.0'
- B - Mag nail set in N. side power pole, 2' a.g., 45.6'
- C - Nail fnd in N.E. side power pole, 1.5' a.g., 58.3'
- D - Mag nail set in S.W. side power pole, 2' a.g., 86.6'



The INDOT Type B monument was found in place.  
 A BCS tie card dated December, 2003 shows the corner to be a PK nail found in patch. In 2004 or later, INDOT replaced the nail with a Type B monument in the same position. Though the origin of the position of the monument is not known, it fits with local evidence in the form of the intersection of the existing roadways. This corner was not excavated, being in a state highway. The Type B monument is held as marking the corner.  
 This corner was originally established as a wood post in 1820.



*Kenneth E. Hedge*  
 Kenneth E. Hedge, County Surveyor

*James S. Swift*  
 James S. Swift, IN LS 20200054  
 March 13, 2019

Jackson Township

Section 22 T18N, R2W	Section 23 T18N, R2W
Section 27 T18N, R2W	Section 26 T18N, R2W

# SECTION CORNER RECORD

SW 400-850

## BOONE COUNTY SURVEYOR'S OFFICE

State Plane grid coordinates NAD83 (2011):

North: 1724167.74 East: 3079985.14 (U.S. survey feet)

Type of monument: Harrison, 4" disk 'Section Corner'

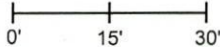
Depth: six inches below adjacent gravel road surface

Indiana tie card references:

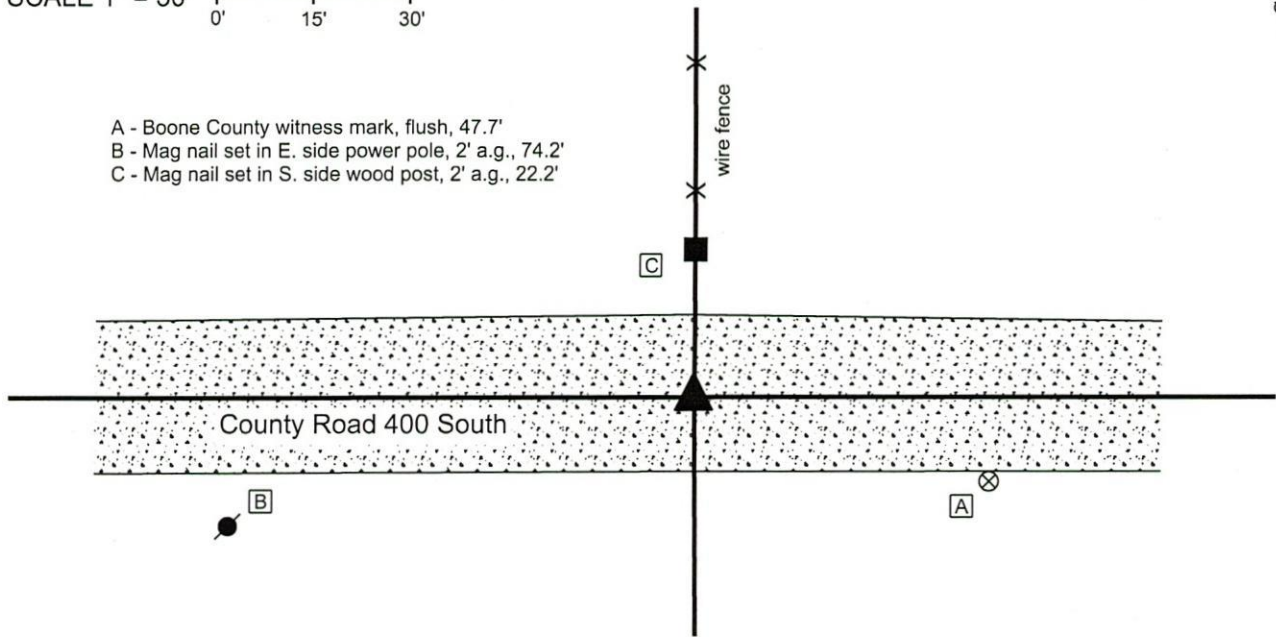
IN02\_T18NR2W22\_76 IN02\_T18NR2W27\_04

### CORNER WITNESS DETAIL

SCALE 1" = 30'



- A - Boone County witness mark, flush, 47.7'
- B - Mag nail set in E. side power pole, 2' a.g., 74.2'
- C - Mag nail set in S. side wood post, 2' a.g., 22.2'

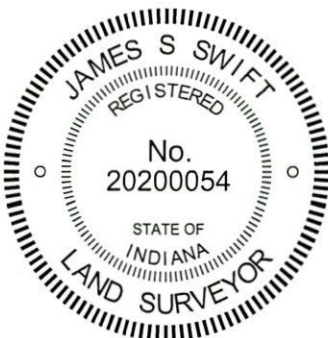


The Harrison monument was set in place of a stone found.

A BCS record dated April 28-29, 1870 states, with respect to this corner, "Reest. two rocks. One rock 7.6.3 + Top Rock 16.12.6 +." A subsequent record November 13, 1893 states "Found from stump of White Oak (F. Sec. 22) lower rock here. Set rock + 20.16.9 over the old one."

No recent BCS tie cards were found referencing this corner. Excavation was performed at this corner on February 10, 2020. Prior to excavation a 5/8 inch diameter rebar with red cap (markings illegible) was found at 4 inches deep in the approximate center of the road, south of an old post on the north side of the road. The source of this rebar is not known. Excavation revealed a small rock found at 3 inches deep, slightly east of the rebar. Further excavation revealed the top stone described in the 1893 record at 8 inches deep, directly below the small stone. The stone was removed and measured to be 19 inches tall by 15 inches E-W by 9 inches N-S, matching or very close to the dimensions recited in the 1893 record. Another stone was found directly below at 29 inches deep. This lower stone was flat and horizontal. The top of the stone was approximately 8 inches N-S by 6 inches E-W and a distinct etched "+" mark was clearly visible on the top, center of the stone. The lower stone was left in place and a Harrison monument was set directly over the etched mark on the top of the stone. The rebar, removed during excavation, had been 0.2 foot north and 0.8 foot west of the mark on the lower stone.

This corner was originally established as a wood post in 1820.



*Kenneth E. Hedge*  
Kenneth E. Hedge, County Surveyor

*James S. Swift*  
James S. Swift, IN LS 20200054  
February 19, 2020

Jackson Township

Section 22  
T18N, R2W

Section 27  
T18N, R2W

# SECTION CORNER RECORD

# SW 400-900

## BOONE COUNTY SURVEYOR'S OFFICE

State Plane grid coordinates NAD83 (2011):

North: 1724165.86 East: 3077331.35 (U.S. survey feet)

Type of monument: Harrison, 4" disk 'Section Corner'

Depth: Six inches below adjacent gravel road surface

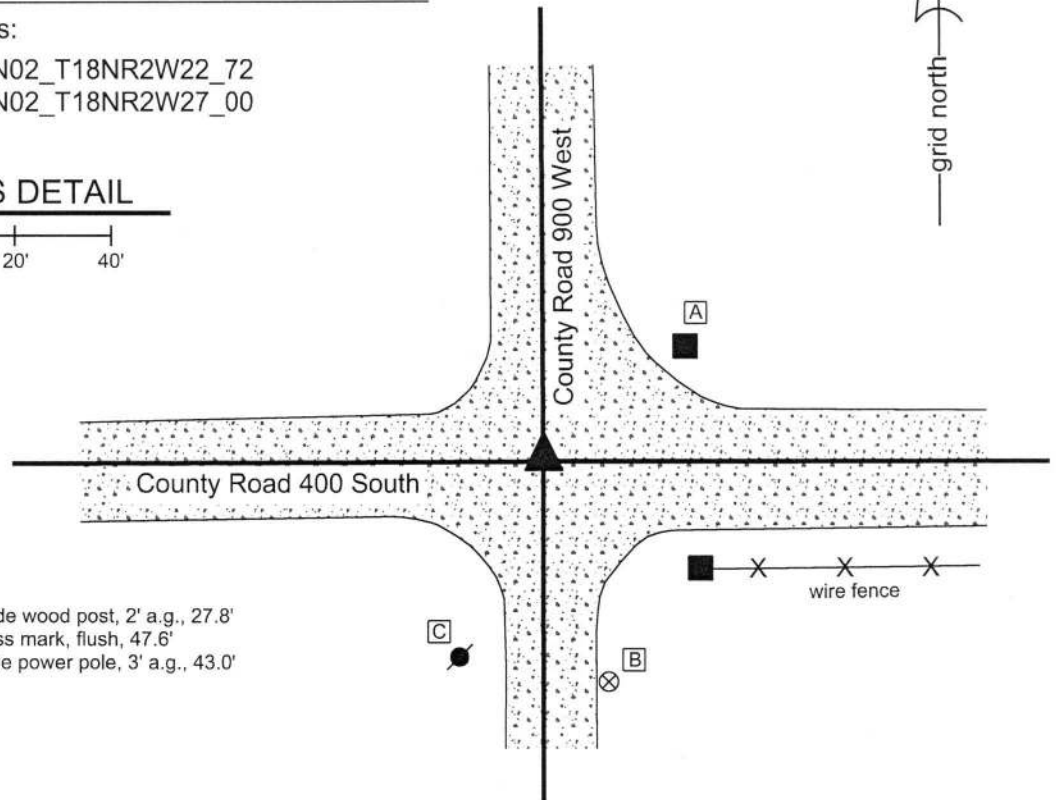
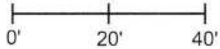
Indiana tie card references:

IN02\_T18NR2W21\_80 IN02\_T18NR2W22\_72

IN02\_T18NR2W28\_08 IN02\_T18NR2W27\_00

### CORNER WITNESS DETAIL

SCALE 1" = 40'

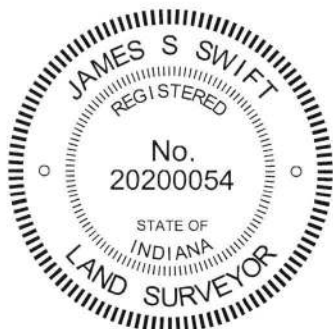


- A - Mag nail set in W. side wood post, 2' a.g., 27.8'
- B - Boone County witness mark, flush, 47.6'
- C - Mag nail set in E. side power pole, 3' a.g., 43.0'

The Harrison monument was set over a stone found. A BCS record of April 20-22, 1870 calls this corner "Rock that was set." A BCS tie card with no date, though evidently originating from the late 1960s or early 1970s, based on the drafting style of the sketch and the names of the crew members, shows this corner as "Stone Located. RRR 7" east of stone."

This corner was excavated on September 28, 2018. Prior to excavation, a section of 5/8 inch rebar was found flush with the road surface. The rebar was bent at 4 inches below the surface of the road, above which point it was generally horizontal and below which point it was generally vertical. Excavation revealed a railroad rail found at 5 inches deep in the same approximate horizontal position as the shaft of the rebar. Further excavation revealed a stone found at 32 inches deep. The stone had a distinct "+" mark at the top, center. With the top 4 inches of the stone exposed, it measured 9 inches N-S by 8 inches E-W. The stone was fully embedded in the clay layer below the road, with the top of the stone coincident with the bottom of the road bed. The "+" mark on the stone was 7 inches west of the railroad rail, in precise conformity with the undated tie card. The tie card clearly indicates that the found stone is held as the corner and that the rail was set 7 inches east, presumably as a witness. It is noted that the section of rail, removed during excavation, was 30 inches long. The vertical separation between the top of the stone and the top of the rail was computed to be 27 inches. It is concluded that the top of the rail was most likely originally set flush with the road bed and that, given that the rail was too long to be placed directly over the stone, the rail was set slightly east of the stone as a witness to the stone. The "+" mark on the top of the stone was held as marking the specific location of the corner and a Harrison monument was set directly over this point. As noted, the rebar and rail, both removed during excavation, had been 7 inches east of the mark on the stone.

This corner was originally established as a wood post in 1820.



*Kenneth E. Hedge*  
Kenneth E. Hedge, County Surveyor

*James S. Swift*  
James S. Swift, IN LS 20200054  
October 10, 2018

Jackson Township

Section 21 T18N, R2W	Section 22 T18N, R2W
Section 28 T18N, R2W	Section 27 T18N, R2W