

SECTION CORNER RECORD

NW 200-900

BOONE COUNTY SURVEYOR'S OFFICE

State Plane grid coordinates NAD83 (2011):

North: 1756130.40 East: 3077219.52 (U.S. survey feet)

Type of monument: Harrison, 4" disk 'Section Corner'

Depth: One inch below adjacent road surface

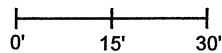
Indiana tie card references:

IN02_T19NR2W22_72 IN02_T19NR2W21_80

IN02_T19NR2W28_08 IN02_T19NR2W27_00

CORNER WITNESS DETAIL

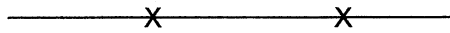
SCALE 1" = 30'



A - Boone County witness mark, flush, 18.6'

B - Mag nail set in E. side wood corner post, 2' a.g., 21.5'

C - Mag nail set in S. side power pole, 2' a.g., 78.1'



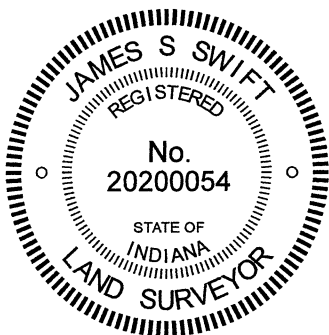
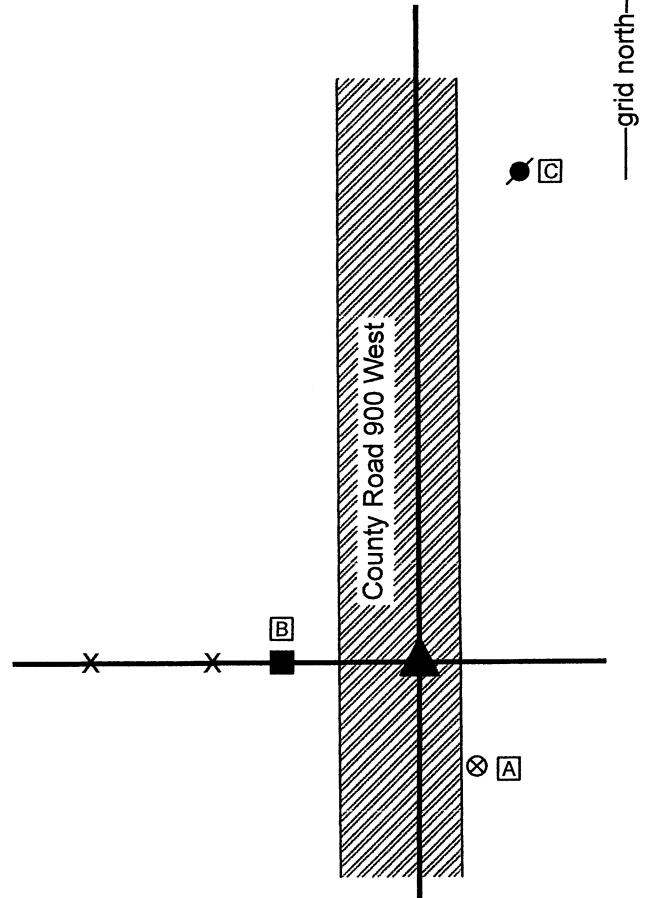
- wire fence

The Harrison monument was set over a stone found.

A BCS record dated 1917 states, with respect to this corner, "Set Rock. Under 7" x 8" x 9". Top 5" x 6" x 6" +." A BCS tie card August 26, 1969 states 'No Stone Located.'

This corner was excavated on September 23, 2021. Prior to excavation, a vertical section of railroad rail was found at 3 inches below grade. The rail is not mentioned in the 1969 tie card but was most likely set at that time by that crew, as setting railroad rails was a standard practice of BCS field crews from that era. Excavation revealed a stone found at 6 inches deep, east of the rail. The stone was in the fill material of the road bed, but was oriented in cardinal directions. The stone measured 7 inches E-W by 7 inches N-S by 4 inches tall, approximating but not quite matching the dimensions of the top rock described in the 1917 record. No specific marks were detected on the stone, perhaps due to the remarkably rough surface of the rock. Further excavation revealed another stone found directly below the top stone at 12 inches deep. The west edge of this stone was exposed. The stone was vertical and oriented in cardinal directions, measuring 9 inches tall by 7 inches N-S. The east-west dimension was measured as 7 inches at 3 inches down from the top of the stone. No specific marks were observed on the stone, nor were any called for in description. The stone was accepted as being the lower monument called for in the 1917 record and was held as marking the corner. The stone was left in place and a Harrison monument was set directly over the top, high point. The railroad rail, removed during excavation, had been 2.2 feet west of the stone. Both the stone and the rail were at the easterly prolongation of a fence to the west.

This corner was originally established as a wood post in 1829.



Kenneth E. Hedge
 Kenneth E. Hedge, County Surveyor

James S. Swift
 James S. Swift, IN LS 20200054
 September 29, 2021

Jefferson Township

Section 21 T19N, R2W	Section 22 T19N, R2W
Section 28 T19N, R2W	Section 27 T19N, R2W

SECTION CORNER RECORD

NW 200-950

BOONE COUNTY SURVEYOR'S OFFICE

State Plane grid coordinates NAD83 (2011):

North: 1756125.04 East: 3074575.22 (U.S. survey feet)

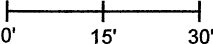
Type of monument: 5/8 inch rebar with aluminum cap stamped 'Boone County Surveyor' 4 feet long, set in concrete

Depth: Flush with adjacent ditch bank

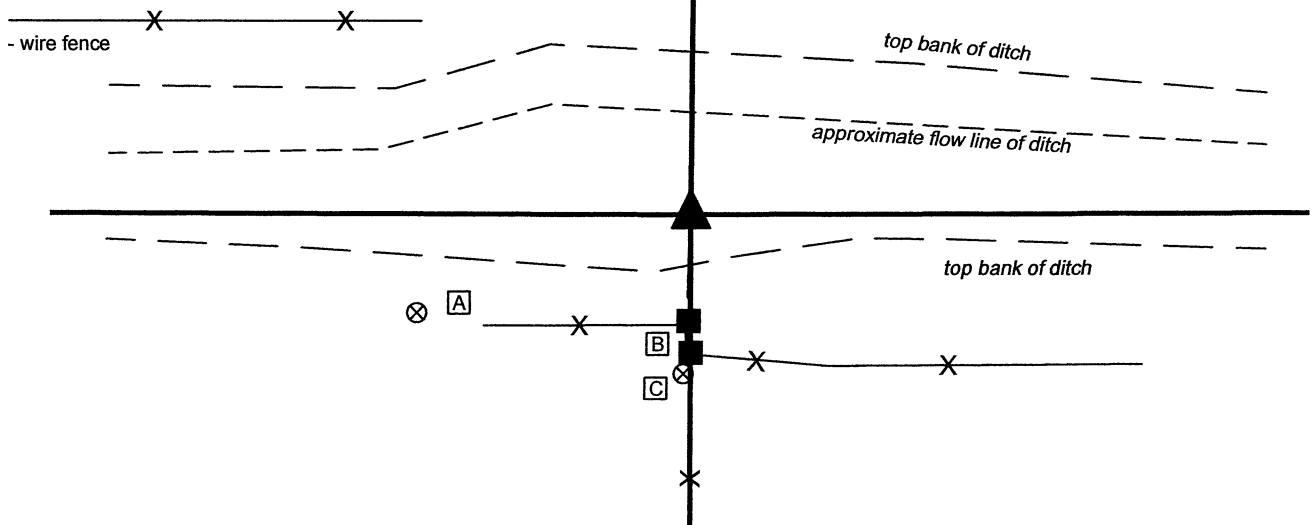
Indiana tie card references:

IN02_T19NR2W21_76 IN02_T19NR2W28_04

CORNER WITNESS DETAIL

SCALE 1" = 30' 

- A - Boone County witness mark, flush, 45.4'
- B - Mag nail set in W. side wood corner post, 2, a.g., 21.4'
- C - Rebar with yellow cap (Dodge), flush, 24.7'



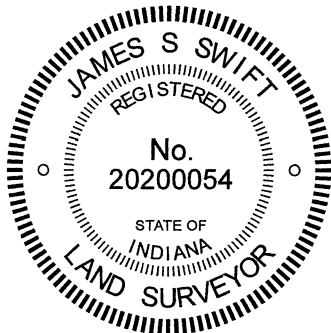
The rebar with metal cap was set at a calculated position.

A BCS record of April 25, 1919 states, with respect to this corner, "Set Rock 6x8x12. Top 12x9x6 +."

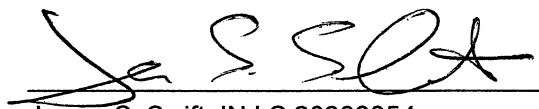
No recent BCS tie cards were found referencing this corner. The corner is shown on a survey by Jerry L. Carter recorded as Instrument 200600005905 in the Office of the Boone County Recorder. This survey shows the corner as a calculated position, witnessed by a rebar 24.75 feet south. The actual corner falls within the banks of the Riggins Legal Drain. No evidence of the actual corner is likely to have survived the excavation of the open ditch. The specific position of the corner was computed with respect to information shown on the aforementioned survey. The position of the corner was computed with an uncertainty of approximately 0.3 foot in all directions, as computed with respect to the evidence found for the southeast, southwest, west quarter and east quarter corners of section 21. A rebar with yellow plastic cap found in the fence to the south, appears to be 1.1 foot west of the position shown on the survey. It is noted that the survey shows the corner to be east of a standing fence, but the rebar found in the field is located in-line with the fence.

The position of the corner computed with respect to the survey data falls on the south bank of the Riggins ditch, at the northerly prolongation of an old fence to the south. As the corner falls on the edge of a steep ditch bank, no Harrison monument was set. A 48-inch length of 5/8-inch diameter rebar was set at the computed position, anchored to the ditch bank with concrete surrounding portions of the rebar from approximately 3 inches to 24 inches below grade. The concrete is also anchored to two 1/2-inch diameter rebars, 2-foot long, driven into the southerly ditch bank, slightly south of the primary monument. A metal cap stamped 'Boone County Surveyor' was attached to the top of the 48-inch long rebar.

This corner was originally established as a wood post in 1829.




 Kenneth E. Hedge, County Surveyor


 James S. Swift, IN LS 20200054

December 2, 2020

Jefferson Township

Section 21
T19N, R2W

Section 28
T19N, R2W

SECTION CORNER RECORD

NW 200-1000

BOONE COUNTY SURVEYOR'S OFFICE

State Plane grid coordinates NAD83 (2011):
North: 1756132.33 East: 3071944.58 (U.S. survey feet)

Type of monument: Harrison, 4" disk 'Section Corner'
Depth: flush with adjacent road surface

Indiana tie card references:
IN02_T19NR2W20_80 IN02_T19NR2W21_72
IN02_T19NR2W29_08 IN02_T19NR2W28_00

CORNER WITNESS DETAIL

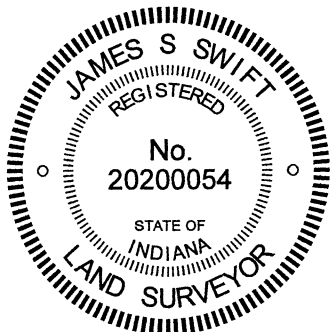
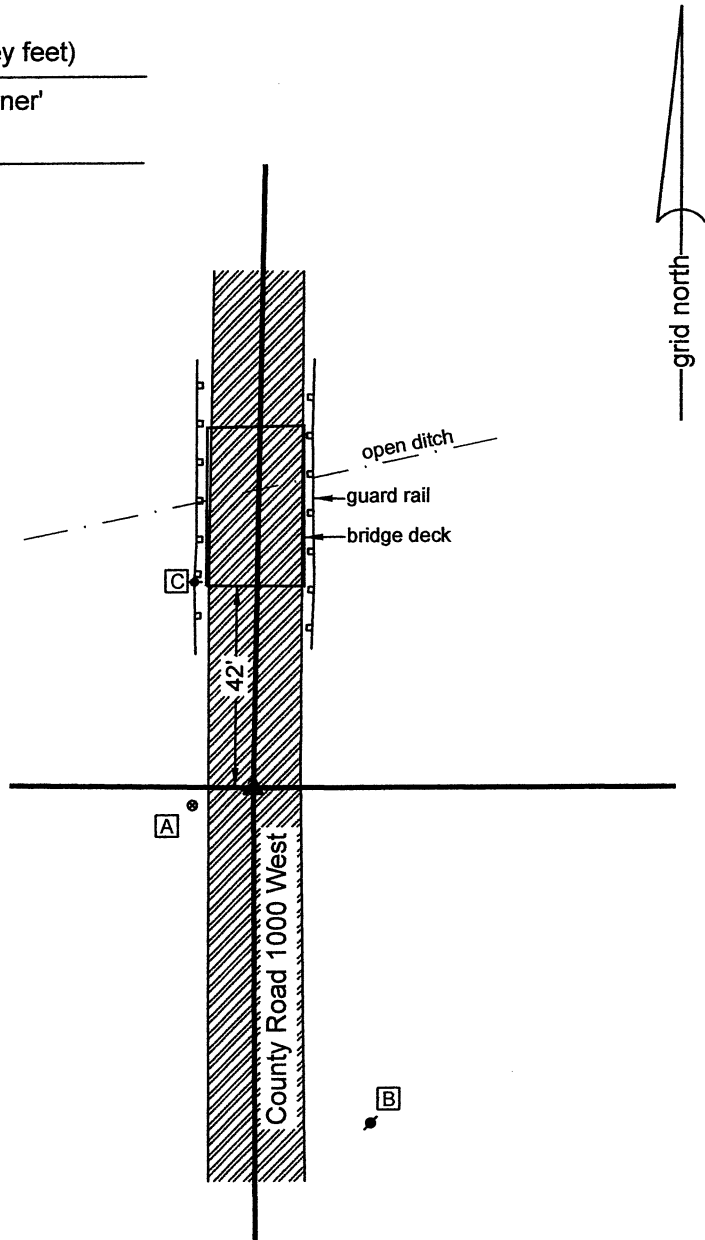
SCALE 1" = 40'
0' 20' 40'

- A - Boone County witness mark, flush, 13.4'
- B - Mag nail set in N.W. side power pole, 2' a.g., 73.4'
- C - Chisel mark in top of guard rail post, 44.7'

The Harrison monument was set over a vertical section of railroad rail found.

A BCS record of April 25, 1919 states, with respect to this corner, "Set Rock edge of road, 11,11,8 +. Bottom rock 8,6,5 +." A BCS tie card dated June 23, 1968 shows the corner in the center of the north-south road, in-line with a fence to the east, with the caption "No Stone."

This corner was partially excavated on July 15, 2021. The corner falls in an area of substantial fill in the approach to the bridge over the open ditch north of the corner. No large scale excavation was performed. A 1/2-inch diameter found at 1-inch deep in the asphalt roadway was removed and a vertical section of railroad rail was found at 9 inches deep. Though it is not specifically referenced on the 1968 tie card, the rail was most likely set at that time, as it was the standard procedure of BCS field crews from that era to set vertical sections of railroad rail to mark section corners. The rail was originally set per the visible evidence of the original corner, in the form of the north-south roadway and the fence to the east. Measurements to proximate corners indicate that the rail may be further south than the position of the corner as originally established, but no physical evidence was found to support this supposition. It is known that the rail and rebar have long been held as marking the corner, including on a survey by surveyor Jerry Carter which is recorded as Instrument 200600005905 in the Office of the Boone County Recorder. Given the lack of contrary evidence and the long held acceptance of the rail and rebar as marking the corner, the rail was held as the best available evidence of the corner. The rail was not removed from the road. A Harrison monument was partially broken off and set directly over the top, center of the rail. This corner was originally established as a wood post in 1829.



Kenneth E. Hedge
Kenneth E. Hedge, County Surveyor

James S. Swift
James S. Swift, IN LS 20200054
July 21, 2021

Jefferson Township

Section 20 T19N, R2W	Section 21 T19N, R2W
Section 29 T19N, R2W	Section 28 T19N, R2W

SECTION CORNER RECORD

NW 250-900

BOONE COUNTY SURVEYOR'S OFFICE

State Plane grid coordinates NAD83 (2011):

North: 1758783.19 East: 3077191.07 (U.S. survey feet)

Type of monument: Harrison, 4" disk 'Section Corner'

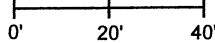
Depth: One inch below adjacent road surface

Indiana tie card references:

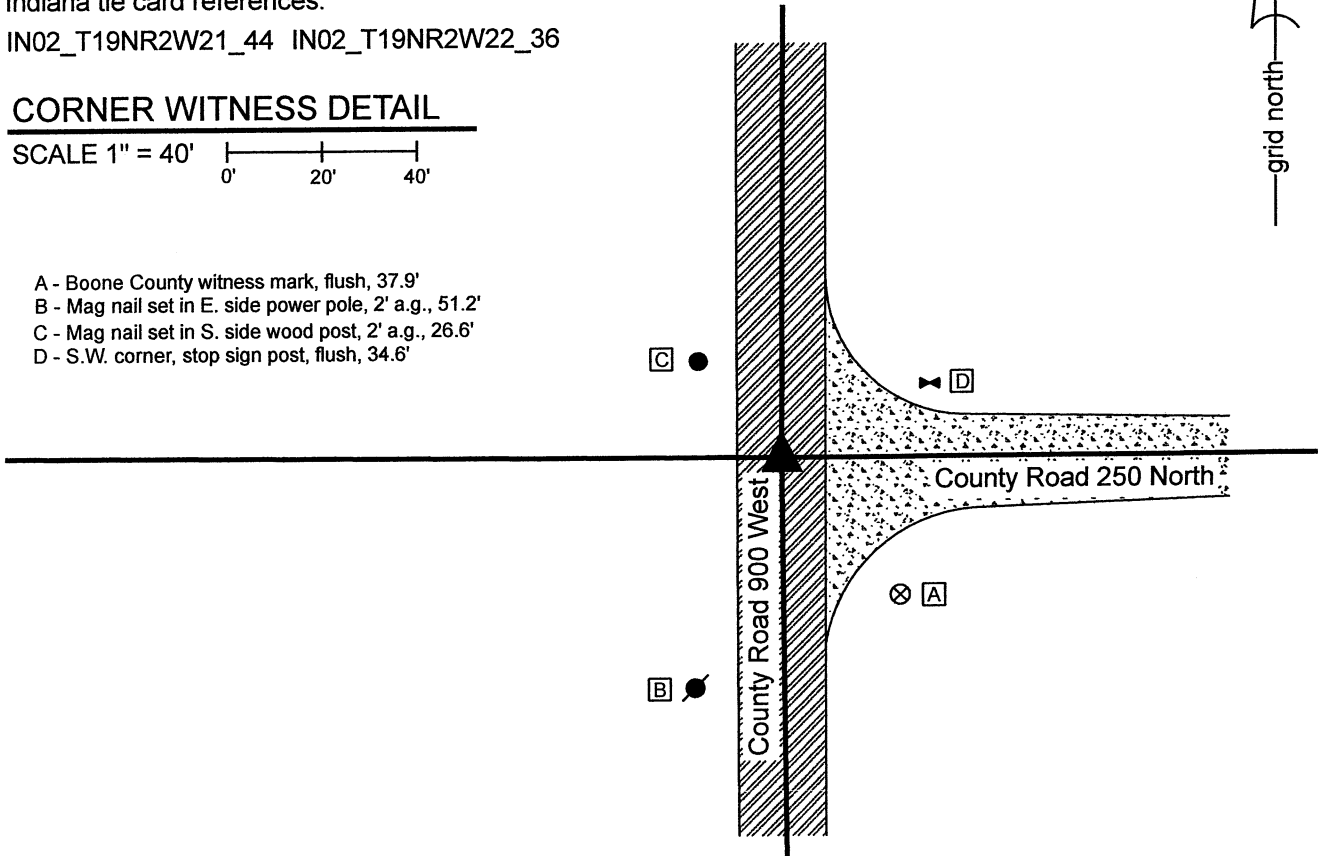
IN02_T19NR2W21_44 IN02_T19NR2W22_36

CORNER WITNESS DETAIL

SCALE 1" = 40'



- A - Boone County witness mark, flush, 37.9'
- B - Mag nail set in E. side power pole, 2' a.g., 51.2'
- C - Mag nail set in S. side wood post, 2' a.g., 26.6'
- D - S.W. corner, stop sign post, flush, 34.6'



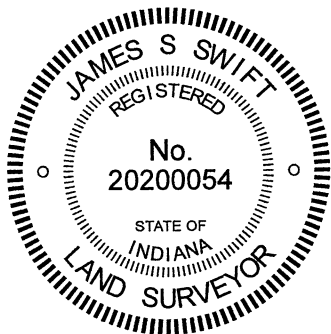
The Harrison monument was set in place of a vertical section of railroad rail found.

A BCS record dated August 25, 1865 states, with respect to this corner, "Found from stump of one tree." A BCS tie card dated August 26, 1969 states, 'No Stone Located.'

This corner was excavated on September 23, 2021. Prior to excavation, a railroad spike was found at 2 inches below grade at the approximate center of the intersection of the two roads. Excavation revealed a vertical section of railroad rail found at 10 inches deep, slightly north of the railroad spike. Further excavation of a 5-foot N-S by 5-foot E-W area, excavated to the clay layer below the road bed at 15 inches deep, revealed no further evidence of the corner.

The railroad rail is not mentioned on the 1969 tie card, but it is known that setting such a monument was standard practice for BCS survey crews of that era. The railroad rail fit with local evidence of the corner, being at the intersection of the two county roads, and fit well with the relative positions of proximate corners. The railroad rail was held as the best available evidence of the corner. Both the spike and the rail were removed during excavation. The rail was replaced with a Harrison monument in the same horizontal position. The spike had been 0.2 foot west and 0.3 foot south of the center of the rail. The spike appears to have been held as the corner on a survey by Jerry L. Carter recorded as Instrument 200600005905 in the Office of the Boone County Recorder.

This corner was originally established as a wood post in 1829.



Kenneth E. Hedge
 Kenneth E. Hedge, County Surveyor

James S. Swift
 James S. Swift, IN LS 20200054
 September 29, 2021

Jefferson Township

Section 21 T19N, R2W	Section 22 T19N, R2W
-------------------------	-------------------------

SECTION CORNER RECORD

NW 250-1000

BOONE COUNTY SURVEYOR'S OFFICE

State Plane grid coordinates NAD83 (2011):

North: 1758805.39 East: 3071988.50 (U.S. survey feet)

Type of monument: Harrison, 4" disk 'Section Corner'

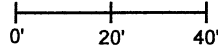
Depth: One inch below adjacent road surface

Indiana tie card references:

IN02_T19NR2W20_44 IN02_T19NR2W21_36

CORNER WITNESS DETAIL

SCALE 1" = 40'



- A - Boone County witness mark, flush, 27.7'
- B - Boone County witness mark, flush, 22.5'
- C - Boone County witness mark, flush, 32.5'
- D - Mag nail set in W. side wood post, 2' a.g., 24.3'

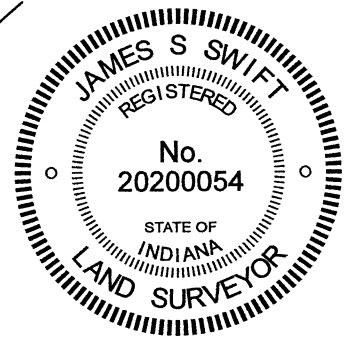
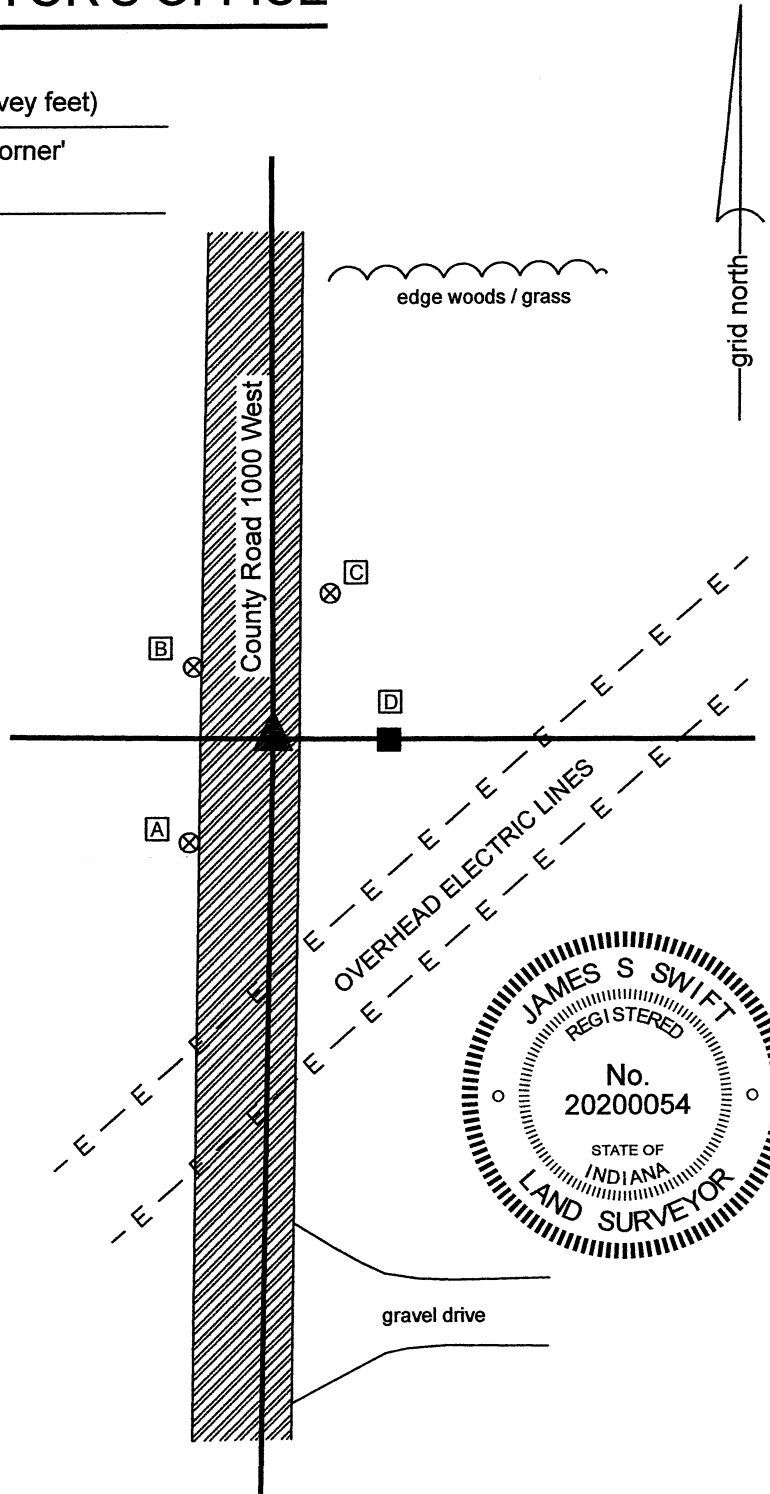
The Harrison monument was set over a vertical section of railroad rail found.

No specific descriptions of this corner were found in the BCS Surveyor's Record beyond the original establishment of the corner as a wood post in 1819.

A BCS tie card dated September 2, 1969 shows the corner in the center of the north-south roadway in-line with fences to the east and west. The caption on this tie card states "Stone Located. Rail set."

This corner was excavated on July 15, 2021. Prior to excavation, two nails were known to exist, one being a Mag nail of unknown origin found flush with the road and the other being an older nail, also of known origin, found in a hole in the asphalt slightly below flush. Excavation in the immediate vicinity of the nails did not reveal additional evidence. Further excavation to the east did reveal a vertical section of railroad rail found closer to the east edge of the road. The rail was found at 11 inches below grade. It was observed that, though the rail is closer to the edge of the road than the center of the road in the immediate vicinity of the corner, the rail falls much more in-line with the center of the road as it exists further to the north and south than did the nails. The rail was accepted as being the same monument referenced on the 1969 tie card. No evidence of a stone was found immediately adjacent to the rail. Hence, it appears that the stone was removed and replaced by the rail in 1969, which is known to have been standard practice of BCS field crews from that era. The rail was left in place and held as marking the corner. A Harrison monument was set directly over the top, center of the rail. The two nails were both removed during excavation. The older nail had been 4.6 feet West and 0.2 foot North of the rail. The newer Mag nail had been 4.7 feet West and 0.2 foot South of the rail.

This corner was originally established as a wood post in 1819.



Kenneth E. Hedge
 Kenneth E. Hedge, County Surveyor

James S. Swift
 James S. Swift, IN LS 20200054

July 21, 2021

Jefferson Township

Section 20 T19N, R2W	Section 21 T19N, R2W
-------------------------	-------------------------

SECTION CORNER RECORD

NW 300-950

BOONE COUNTY SURVEYOR'S OFFICE

State Plane grid coordinates NAD83 (2011):
North: 1761397.99 East: 3074566.54 (U.S. survey feet)

Type of monument: Harrison, 4" disk 'Section Corner'
Depth: Two inches above surrounding ground

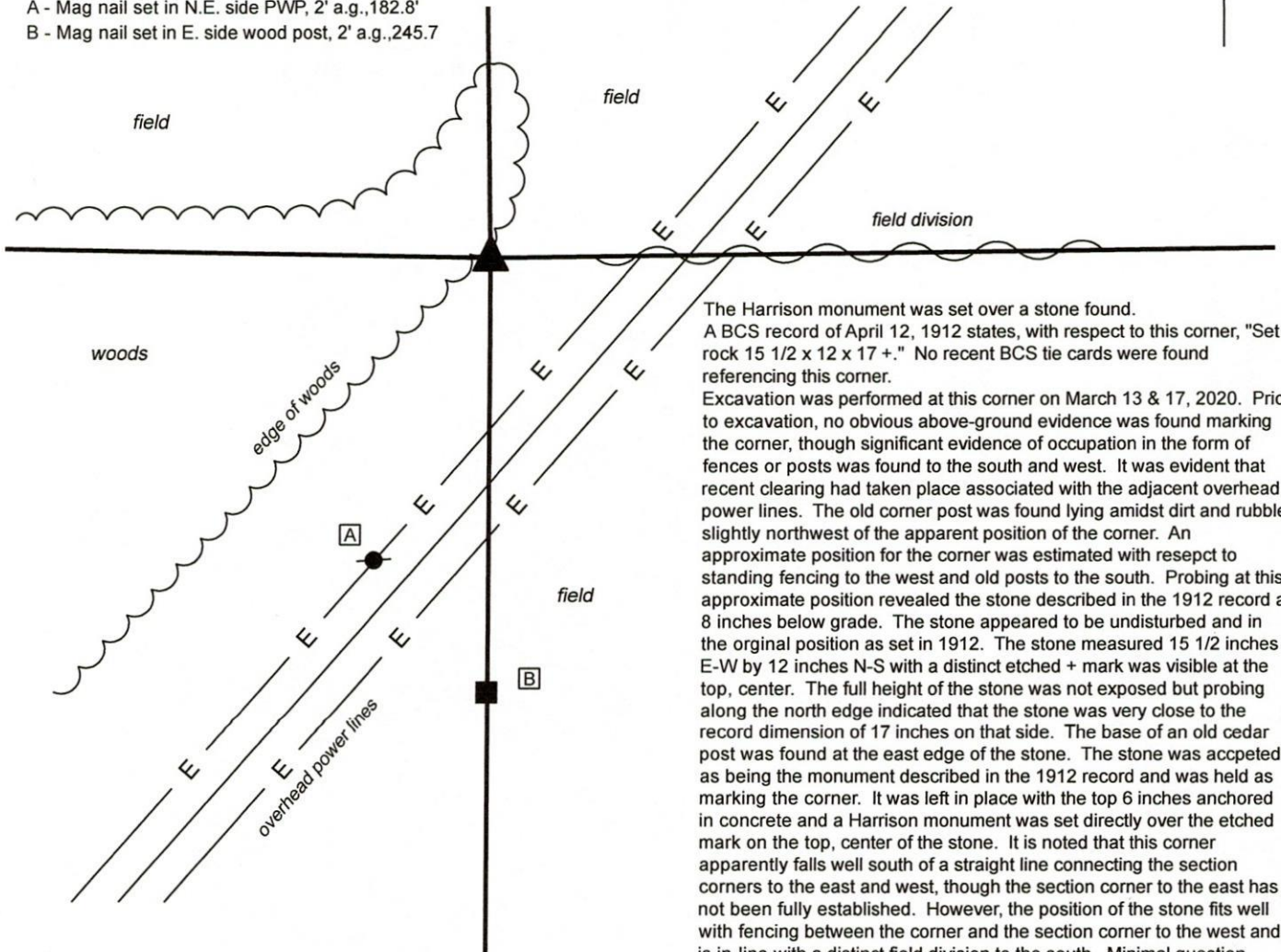
Indiana tie card references:
IN02_T19NR2W16_76 IN02_T19NR2W21_04

CORNER WITNESS DETAIL

SCALE 1" = 100'
0' 50' 100'



- A - Mag nail set in N.E. side PWP, 2' a.g., 182.8'
- B - Mag nail set in E. side wood post, 2' a.g., 245.7



The Harrison monument was set over a stone found. A BCS record of April 12, 1912 states, with respect to this corner, "Set rock 15 1/2 x 12 x 17 +." No recent BCS tie cards were found referencing this corner.

Excavation was performed at this corner on March 13 & 17, 2020. Prior to excavation, no obvious above-ground evidence was found marking the corner, though significant evidence of occupation in the form of fences or posts was found to the south and west. It was evident that recent clearing had taken place associated with the adjacent overhead power lines. The old corner post was found lying amidst dirt and rubble slightly northwest of the apparent position of the corner. An approximate position for the corner was estimated with respect to standing fencing to the west and old posts to the south. Probing at this approximate position revealed the stone described in the 1912 record at 8 inches below grade. The stone appeared to be undisturbed and in the original position as set in 1912. The stone measured 15 1/2 inches E-W by 12 inches N-S with a distinct etched + mark was visible at the top, center. The full height of the stone was not exposed but probing along the north edge indicated that the stone was very close to the record dimension of 17 inches on that side. The base of an old cedar post was found at the east edge of the stone. The stone was accepted as being the monument described in the 1912 record and was held as marking the corner. It was left in place with the top 6 inches anchored in concrete and a Harrison monument was set directly over the etched mark on the top, center of the stone. It is noted that this corner apparently falls well south of a straight line connecting the section corners to the east and west, though the section corner to the east has not been fully established. However, the position of the stone fits well with fencing between the corner and the section corner to the west and is in-line with a distinct field division to the south. Minimal question exists as to whether this is the position established in 1912. This corner was originally established as a wood post in 1829.



Kenneth E. Hedge
Kenneth E. Hedge, County Surveyor

James S. Swift
James S. Swift, IN LS 20200054
March 23, 2020

Jefferson Township

