

SECTION CORNER RECORD

SW 300-900

BOONE COUNTY SURVEYOR'S OFFICE

State Plane grid coordinates NAD83 (2011):

North: 1729453.58 East: 3077325.86 (U.S. survey feet)

Type of monument: Harrison, 4" disk 'Section Corner'

Depth: One inch below adjacent road surface

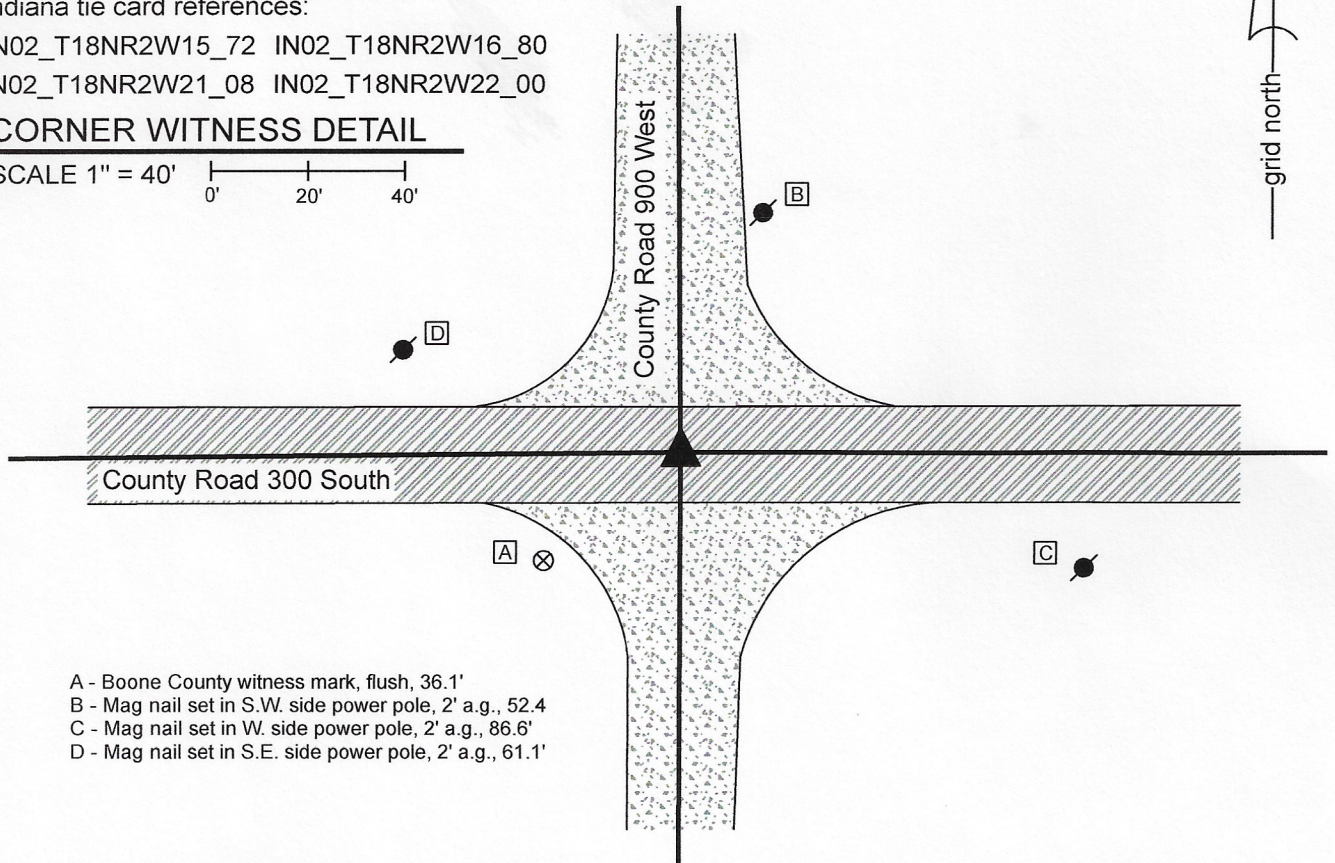
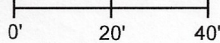
Indiana tie card references:

IN02_T18NR2W15_72 IN02_T18NR2W16_80

IN02_T18NR2W21_08 IN02_T18NR2W22_00

CORNER WITNESS DETAIL

SCALE 1" = 40'



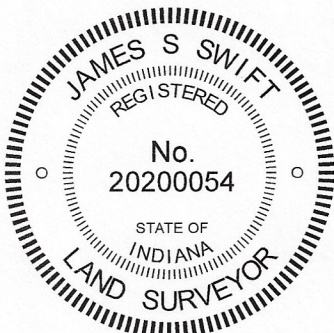
- A - Boone County witness mark, flush, 36.1'
- B - Mag nail set in S.W. side power pole, 2' a.g., 52.4
- C - Mag nail set in W. side power pole, 2' a.g., 86.6'
- D - Mag nail set in S.E. side power pole, 2' a.g., 61.1'

The Harrison monument was set over a stone found.

A BCS record dated April 18-19, 1870 states, with respect to this corner, "Reestablished from stump of Maple. Set Rock 13.10.5 +." A BCS tie card dated August 25, 1967 states "No stone."

This corner was excavated on June 26, 2020. Prior to excavation, a mag nail was found at the surface of the road at the intersection of the two county roads. Excavation revealed a vertical section of railroad rail found at 15 inches deep, directly below the mag nail found at the surface. Further excavation revealed a stone found at 19 inches deep, slightly east of the rail and nail. With the top 9 inches of the stone exposed, it measured 10 inches E-W by 5 inches N-S with a distinct etched "+" mark on top. Fragments of a wood stake were found along the south edge of the stone. The stone was accepted as being the same monument as described in the 1870 record and was held as marking the corner. The stone was left in place and a Harrison monument was set directly over the etched mark on the top of the stone. The nail and rail, both removed during excavation, had been 0.6 foot west of the mark on the stone. Though the 1967 tie card states simply, "No stone", it is believed most likely that the vertical section of railroad rail was set in association with the creation of that tie card. The call of "no stone" is erroneous, as the stone described in the 1970 record was present, adjacent to the rail.

This corner was originally established as a wood post in 1821.



Kenneth E. Hedge
Kenneth E. Hedge, County Surveyor

James S. Swift
James S. Swift, IN LS 20200054
July 7, 2020

Jackson Township

Section 16 T18N, R2W	Section 15 T18N, R2W
Section 21 T18N, R2W	Section 22 T18N, R2W

SECTION CORNER RECORD

SW 300-950

BOONE COUNTY SURVEYOR'S OFFICE

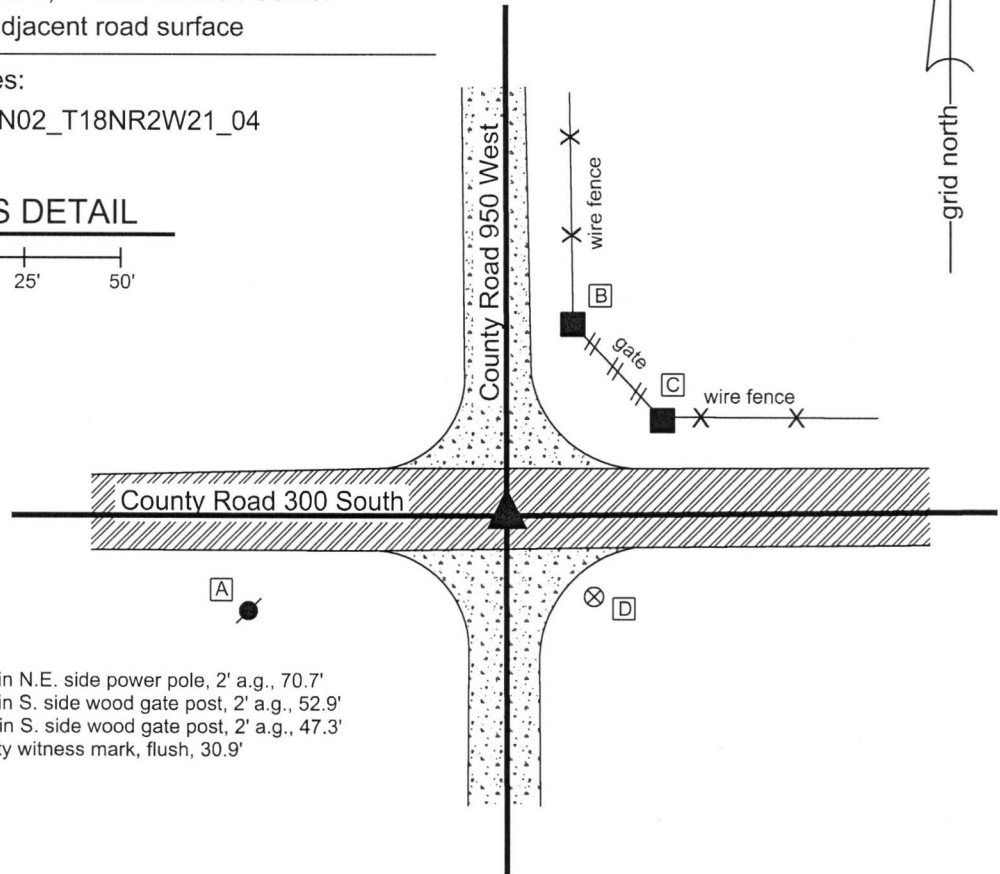
State Plane grid coordinates NAD83 (2011):
North: 1729428.57 East: 3074661.68 (U.S. survey feet)

Type of monument: Harrison, 4" disk 'Section Corner'
Depth: One inch below adjacent road surface

Indiana tie card references:
IN02_T18NR2W16_76 IN02_T18NR2W21_04

CORNER WITNESS DETAIL

SCALE 1" = 50'
0' 25' 50'



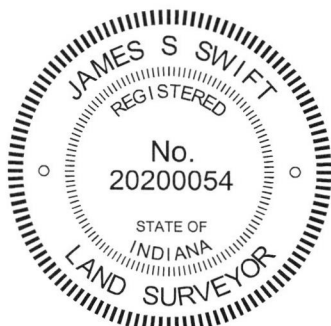
- A - Mag nail set in N.E. side power pole, 2' a.g., 70.7'
- B - Mag nail set in S. side wood gate post, 2' a.g., 52.9'
- C - Mag nail set in S. side wood gate post, 2' a.g., 47.3'
- D - Boone County witness mark, flush, 30.9'

The Harrison monument was set over a stone found.

A BCS record dated April 18-19, 1870 states, with respect to this corner, "Reest from both stumps. Set two rocks. One Rock 9.4.7 +. Top Rock 13.12.8 +." No recent BCS tie cards were found referencing this corner.

Excavation was performed at this corner on September 27, 2018. Prior to excavation, a Mag nail was found 3 inches deep in a small hole in the asphalt near the center of the intersection of the two county roads. Excavation revealed no further evidence below the mag nail but did reveal a stone found at 15 inches deep, southeast of the nail. The stone had a distinct "+" mark etched on top. With the top 9 inches of the stone exposed, it measured 12 inches N-S by 8 inches E-W. The east, west and south sides of the stone were vertical while the north side of the stone sloped down more gradually. The "+" mark was near the south edge of the stone. Fragments of a wood stake were also found along the south edge of the stone. Probing along the south edge indicated that another stone is situated below the exposed stone. These stones were accepted as being the same monuments called in the 1870 record and were held as marking the corner. A Harrison monument was set directly over the "+" mark on the upper stone. The Mag nail, removed during excavation, had been 1.0 foot north and 1.6 feet west of the mark on the stone.

This corner was originally established as a wood post in 1820.



Kenneth E. Hedge
Kenneth E. Hedge, County Surveyor

James S. Swift
James S. Swift, IN LS 20200054
October 10, 2018

Jackson
Township

Section 16
T18N, R2W

Section 21
T18N, R2W

SECTION CORNER RECORD

SW 300-1000

BOONE COUNTY SURVEYOR'S OFFICE

State Plane grid coordinates NAD83 (2011):

North: 1729427.48 East: 3072005.57 (U.S. survey feet)

Type of monument: Harrison, 4" disk 'Section Corner'

Depth: One inch below adjacent road surface

Indiana tie card references:

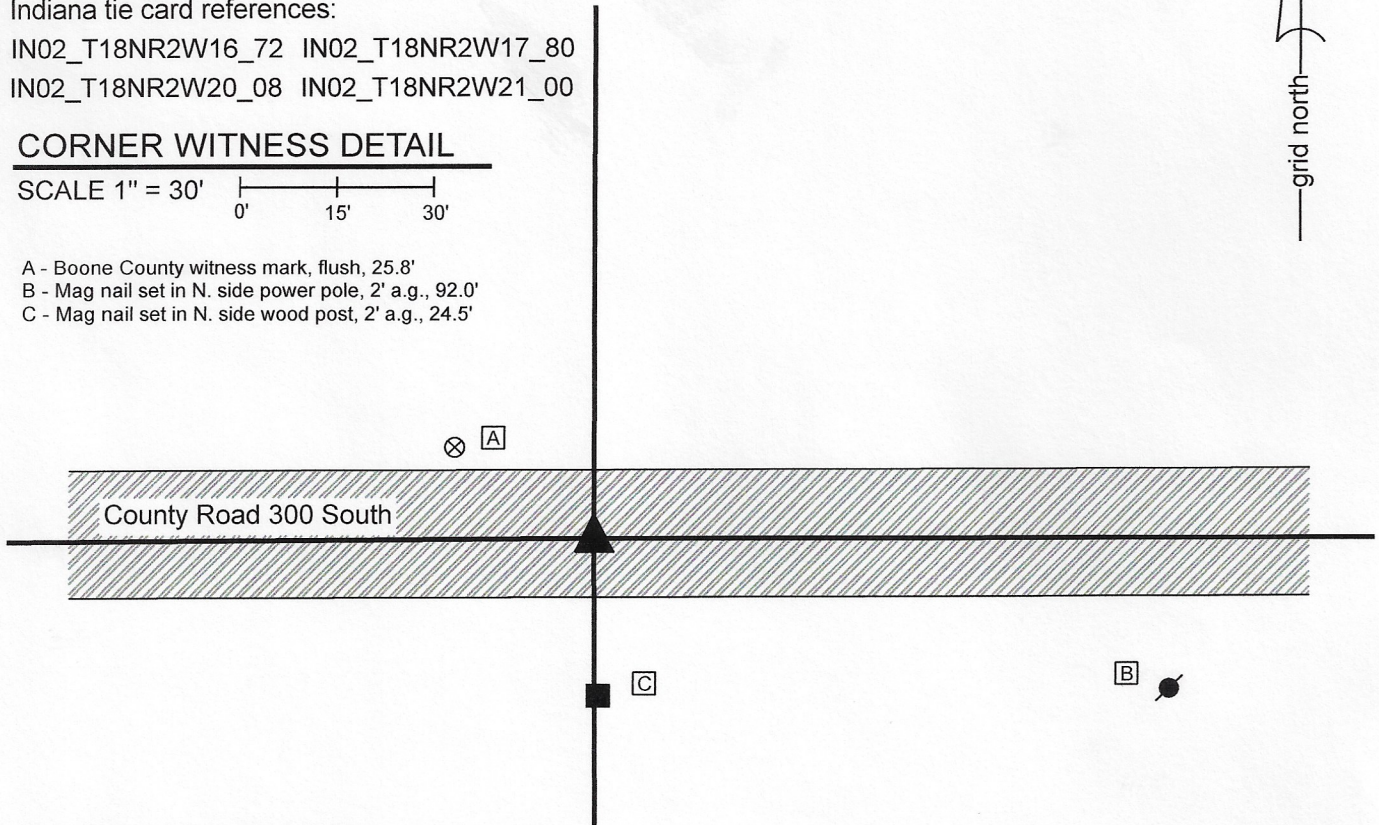
IN02_T18NR2W16_72 IN02_T18NR2W17_80

IN02_T18NR2W20_08 IN02_T18NR2W21_00

CORNER WITNESS DETAIL

SCALE 1" = 30'
0' 15' 30'

- A - Boone County witness mark, flush, 25.8'
- B - Mag nail set in N. side power pole, 2' a.g., 92.0'
- C - Mag nail set in N. side wood post, 2' a.g., 24.5'

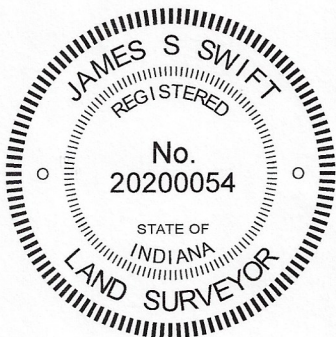


The Harrison monument was set over a stone found.

A BCS record dated April 18-19, 1870 states, with respect to this corner, "A rock that was set from stake where I run road." A BCS tie card dated August 25, 1967 states "No stone."

This corner was excavated on June 25, 2020. Prior to excavation, a mag nail with washer was found at 3 inches below the surface of the road. Excavation revealed a vertical section of railroad rail found at 12 inches deep, directly below the mag nail. A rotten, but generally intact 2 inch by 2 inch wood hub was found at 12 inches deep, slightly south and east of the rail. Further excavation revealed a stone found at 19 inches deep, below the wood hub. The stone was found to be 8 inches E-W by 8 inches N-S by 8 inches tall. The stone was embedded in the clay layer below the road bed, protruding 2 inches into the bottom of the road bed. No specific marks were observed on the stone but it was oriented such that it had a clear high point at the top, center. The stone, being oriented in cardinal directions with a distinct high point and embedded in the clay layer below the road, matched the characteristics of other stones found throughout county for which the record reference is "a rock (or stone) that was set." The stone was accepted as the best available evidence of the corner. The stone was left in place and a Harrison monument was set directly over the top, center and high point of the stone. The nail and rail, both removed during excavation, had been 1.1 foot north and 0.6 foot west of the top, center of the stone. Though the 1967 tie card states simply, "No stone", it is believed most likely that the vertical section of railroad rail was set in association with the creation of that tie card. The call of "no stone" is erroneous, as a stone was present, slightly south and east of the rail.

This corner was originally established as a wood post in 1820.



Kenneth E. Hedge

 Kenneth E. Hedge, County Surveyor

James S. Swift

 James S. Swift, IN LS 20200054
 July 7, 2020

Jackson Township

Section 17 T18N, R2W	Section 16 T18N, R2W
Section 20 T18N, R2W	Section 21 T18N, R2W

SECTION CORNER RECORD

SW 350-900

BOONE COUNTY SURVEYOR'S OFFICE

State Plane grid coordinates NAD83 (2011):

North: 1726810.63 East: 3077318.04 (U.S. survey feet)

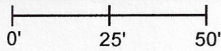
Type of monument: Harrison, 4" disk 'Section Corner'

Depth: Six inches below adjacent road surface

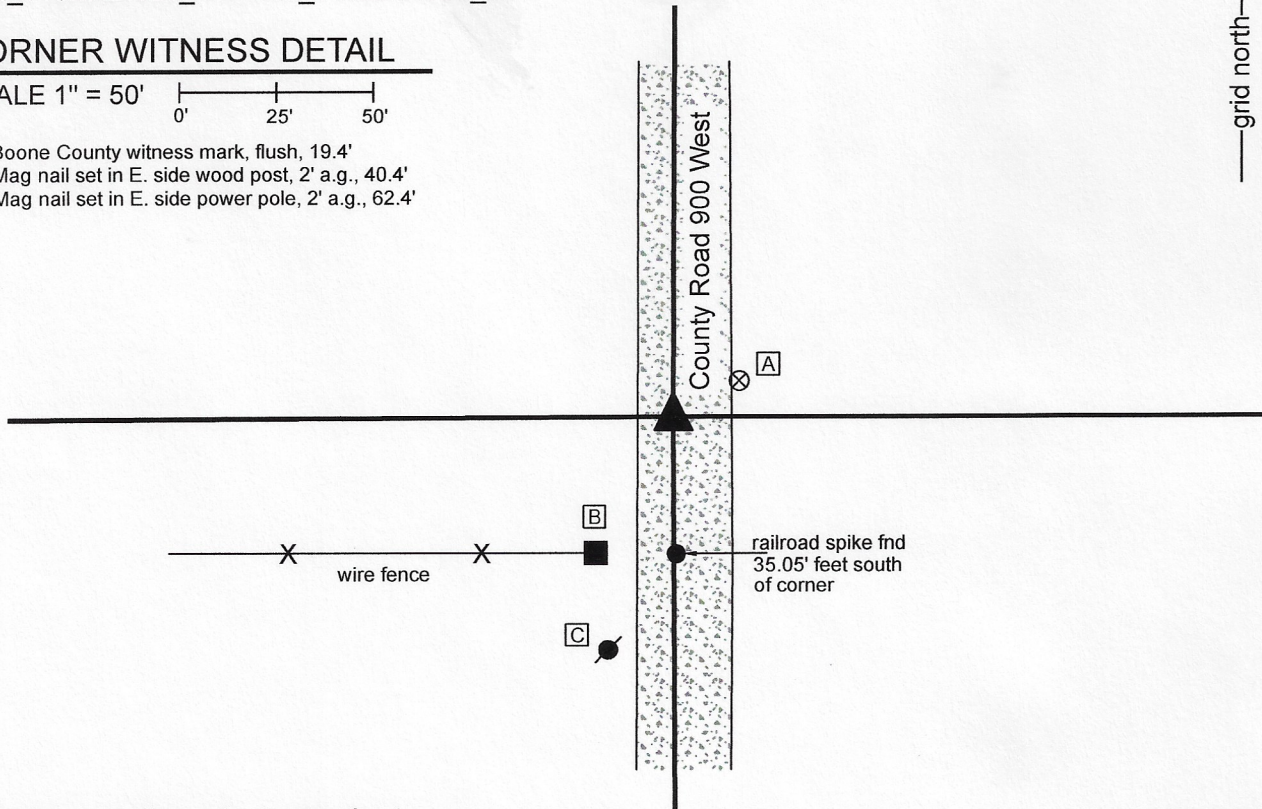
Indiana tie card references:

IN02_T18NR2W21_44 IN02_T18NR2W22_36

CORNER WITNESS DETAIL

SCALE 1" = 50' 

- A - Boone County witness mark, flush, 19.4'
- B - Mag nail set in E. side wood post, 2' a.g., 40.4'
- C - Mag nail set in E. side power pole, 2' a.g., 62.4'

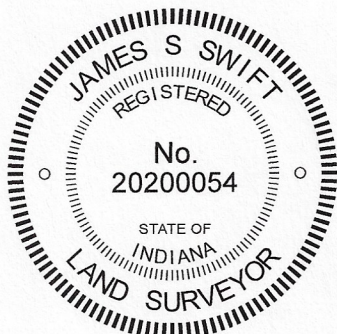


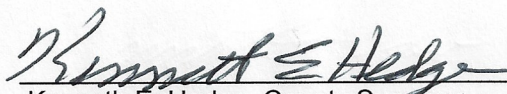
The Harrison monument was set over a stone found.

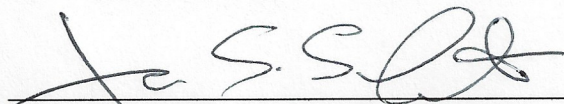
A BCS record dated April 20-22, 1870 states, with respect to this corner, "Reest. from Beech. Set a rock 8.5-1/2.4 +. Top rock 17.14.8 +." No recent BCS tie cards were found referencing this corner.

Excavation was performed at this corner on March 20, 2020. Prior to excavation, a 5/8 inch rebar was found at 2 inches below grade, bent and leaning toward the west. The position of the rebar fit generally with remote fences to the east and west and was found to be approximately 2 rods north of a fence to the west, immediately west of the county road. The position of the rebar fit with deed references for the property to the west. Excavation in the vicinity of the found rebar revealed the lower stone described in the 1870 record at 19 inches deep. The stone measured 8 inches E-W by 5-1/2 inches N-S by 4 inches thick with a distinct etched "+" mark on the top, center. Evidently the upper stone has been previously removed, presumably by road grading equipment. It is noted that when two stones were set by the Boone County Surveyor in the late 1800s, one on top of the other, typically the top stone is found to be vertical and the lower stone is found to be horizontal. The found stone matched the dimensions of the 1870 record as well as the typical, horizontal orientation for a lower stone. The stone was accepted as marking the corner. It was left in place and a Harrison monument was set directly over the etched mark on the center of the top of the stone. The rebar, removed during excavation, had been approximately 1.3 feet south and 0.6 foot east of the mark on the stone. It is noted that the rebar was 11 inches long and leaning substantially to the west.

This corner was originally established as a wood post in 1820.




 Kenneth E. Hedge, County Surveyor


 James S. Swift, IN LS 20200054
 April 29, 2020

Jackson Township

Section 21 T18N, R2W	Section 22 T18N, R2W
-------------------------	-------------------------

SECTION CORNER RECORD

SW 350-1000

BOONE COUNTY SURVEYOR'S OFFICE

State Plane grid coordinates NAD83 (2011):

North: 1726786.32 East: 3072015.12 (U.S. survey feet)

Type of monument: Harrison, 4" disk 'Section Corner'

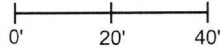
Depth: Four inches above adjacent grade

Indiana tie card references:

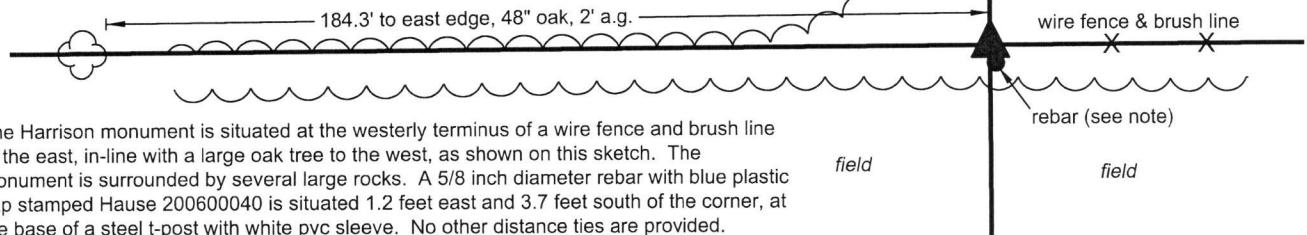
IN02_T18NR2W20_44 IN02_T18NR2W21_36

CORNER WITNESS DETAIL

SCALE 1" = 40'



- edge field / grass & brush

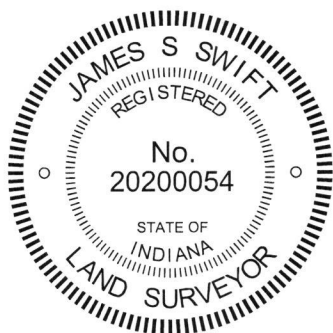


The Harrison monument is situated at the westerly terminus of a wire fence and brush line to the east, in-line with a large oak tree to the west, as shown on this sketch. The monument is surrounded by several large rocks. A 5/8 inch diameter rebar with blue plastic cap stamped Hause 200600040 is situated 1.2 feet east and 3.7 feet south of the corner, at the base of a steel t-post with white pvc sleeve. No other distance ties are provided.

The Harrison monument was set over the base of a wood corner post found.

A BCS record dated April 20-22, 1870 states, with respect to this corner, "Reestablished from stump of Oak, set two rocks. One rock 6.5-1/2.5 +. Top rock 24.15.7+." No recent BCS tie cards were found referencing this corner, nor were any surveys recorded in the Office of the Boone County Recorder found referencing this corner. Excavation was performed at this corner on October 3 and 18, 2018. Prior to excavation, a wood corner post at the westerly terminus of an ancient fence to the east was observed, surrounded by numerous rocks, several of which were quite large. Also, a rebar bearing the plastic cap of Jonathon E. Hause, LS No.20600040, was found to the south and east of the post. None of the large rocks found around the post matched the description of the rocks set in 1870. These rocks were moved to the side and excavation around the base of the post and up to 5 feet east revealed numerous additional rocks, none of which matched the record dimensions, nor appeared to have been purposely set as corner stones. Substantial probing and minor excavation in the immediate vicinity of the Hause capped rebar revealed no further evidence of the corner. Mr. Hause's office was contacted on October 3, 2018 and a survey dated November 14, 2012 was supplied. The survey shows the subject corner as "calculated position." The calculated position appears to match the position of the found rebar. The associated Surveyor's Report does not reference the subject corner and the survey specifically states that no uncertainties were found with respect to occupation and possession. No explanation was offered either on the survey or in response to verbal questions as to why the rebar was set at variance with the obvious physical evidence of the corner in the form of the found wood end post. Although the final position of the section corner to the north has not been established as of the date of publication of this document, it is noted that the position of the wood end post is much closer to a theoretical midpoint between the section corners to the north and south than is the capped rebar. Both the original federal notes of 1820 and the synthesis of BCS records of 1870 and 1895 indicate that the corner should be at or close to equidistant from the section corners to the north and south. The wood post fits better with this expectation than does the capped rebar. It is also noted that the position for the southeast corner of section 21 as shown on the Hause survey is substantially west of the true corner, as marked by a Harrison monument set over a found stone (see BCS Corner SW 400-1000). It is further noted that an ancient wood corner post with fencing to the south and east, found 940.3 feet east of the subject corner, falls along the line between the found wood end post and a fence post on the west edge of County Road 950 west, providing witness evidence of the center of section 21. The preponderance of evidence clearly indicates that the found end post represents the best available evidence of the corner. The top of the post was broken off, the base of the post was encased in concrete, and a Harrison monument was set directly over the base of the post. The found rebar was left in place, 1.2 feet east and 3.7 feet south of the corner.

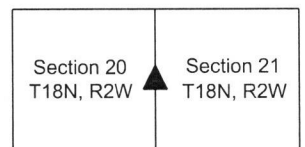
This corner was originally established as a wood post in 1820.



Kenneth E. Hedge
Kenneth E. Hedge, County Surveyor

James S. Swift
James S. Swift, IN LS 20200054
February 6, 2019

Jackson Township



SECTION CORNER RECORD

SW 400-900

BOONE COUNTY SURVEYOR'S OFFICE

State Plane grid coordinates NAD83 (2011):

North: 1724165.86 East: 3077331.35 (U.S. survey feet)

Type of monument: Harrison, 4" disk 'Section Corner'

Depth: Six inches below adjacent gravel road surface

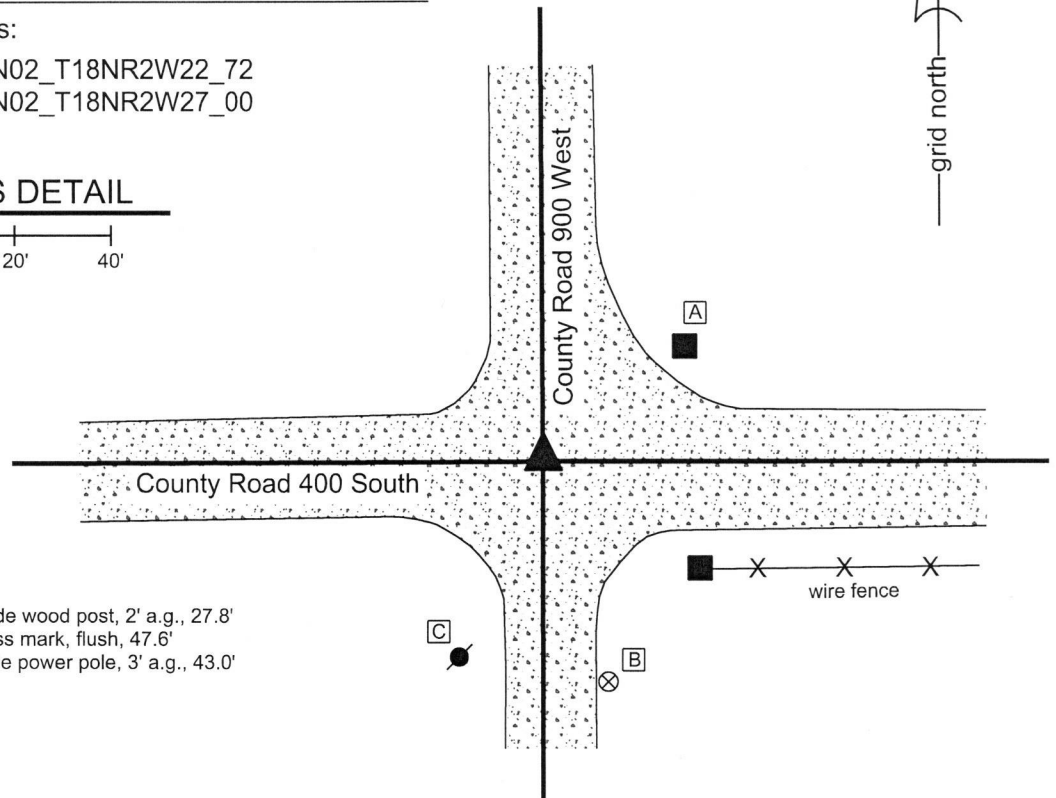
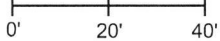
Indiana tie card references:

IN02_T18NR2W21_80 IN02_T18NR2W22_72

IN02_T18NR2W28_08 IN02_T18NR2W27_00

CORNER WITNESS DETAIL

SCALE 1" = 40'

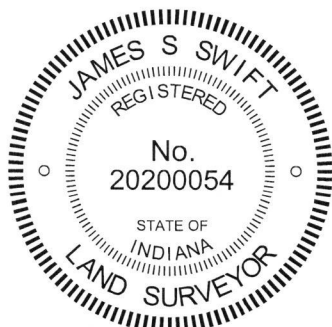


- A - Mag nail set in W. side wood post, 2' a.g., 27.8'
- B - Boone County witness mark, flush, 47.6'
- C - Mag nail set in E. side power pole, 3' a.g., 43.0'

The Harrison monument was set over a stone found. A BCS record of April 20-22, 1870 calls this corner "Rock that was set." A BCS tie card with no date, though evidently originating from the late 1960s or early 1970s, based on the drafting style of the sketch and the names of the crew members, shows this corner as "Stone Located. RRR 7" east of stone."

This corner was excavated on September 28, 2018. Prior to excavation, a section of 5/8 inch rebar was found flush with the road surface. The rebar was bent at 4 inches below the surface of the road, above which point it was generally horizontal and below which point it was generally vertical. Excavation revealed a railroad rail found at 5 inches deep in the same approximate horizontal position as the shaft of the rebar. Further excavation revealed a stone found at 32 inches deep. The stone had a distinct "+" mark at the top, center. With the top 4 inches of the stone exposed, it measured 9 inches N-S by 8 inches E-W. The stone was fully embedded in the clay layer below the road, with the top of the stone coincident with the bottom of the road bed. The "+" mark on the stone was 7 inches west of the railroad rail, in precise conformity with the undated tie card. The tie card clearly indicates that the found stone is held as the corner and that the rail was set 7 inches east, presumably as a witness. It is noted that the section of rail, removed during excavation, was 30 inches long. The vertical separation between the top of the stone and the top of the rail was computed to be 27 inches. It is concluded that the top of the rail was most likely originally set flush with the road bed and that, given that the rail was too long to be placed directly over the stone, the rail was set slightly east of the stone as a witness to the stone. The "+" mark on the top of the stone was held as marking the specific location of the corner and a Harrison monument was set directly over this point. As noted, the rebar and rail, both removed during excavation, had been 7 inches east of the mark on the stone.

This corner was originally established as a wood post in 1820.



Kenneth E. Hedge
Kenneth E. Hedge, County Surveyor

James S. Swift
James S. Swift, IN LS 20200054
October 10, 2018

Jackson Township

Section 21 T18N, R2W	Section 22 T18N, R2W
Section 28 T18N, R2W	Section 27 T18N, R2W

SECTION CORNER RECORD

SW 400-950

BOONE COUNTY SURVEYOR'S OFFICE

State Plane grid coordinates NAD83 (2011):

North: 1724155.33 East: 3074680.79 (U.S. survey feet)

Type of monument: Harrison, 4" disk 'Section Corner'

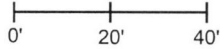
Depth: Six inches below adjacent gravel road surface

Indiana tie card references:

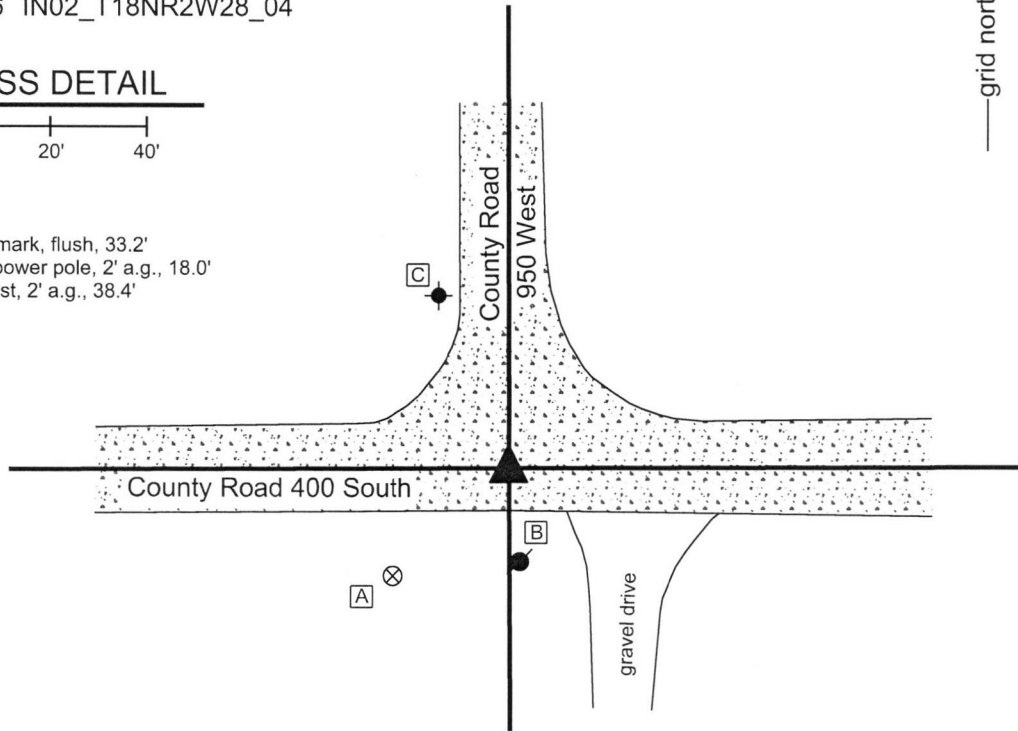
IN02_T18NR2W21_76 IN02_T18NR2W28_04

CORNER WITNESS DETAIL

SCALE 1" = 40'



- A - Boone County witness mark, flush, 33.2'
- B - Mag nail set in N. side power pole, 2' a.g., 18.0'
- C - East edge, stop sign post, 2' a.g., 38.4'



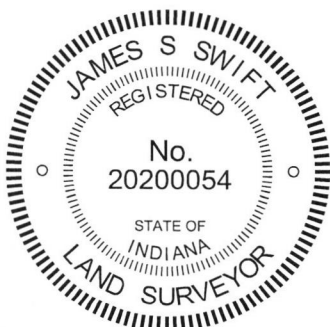
The Harrison monument was set over a stone found.

A BCS record of April 20-22, 1870 calls this corner "a stone that was set." The entry includes a tie reference to a white oak tree. A BCS record of May 2, 1887 states that the corner was "Reestablished from White Oak."

No recent BCS tie cards were found referencing this corner.

Excavation was performed at this corner on September 27, 2018. Prior to excavation, no metal or other artificial monuments were found or known to exist at this corner. Excavation at center of the intersection of County Roads 400 South and 950 West revealed a stone found at 18 inches deep. The stone was vertical with a distinct high point. The stone was embedded in the clay layer below the road with the top of the stone coincident with the bottom of the road bed. The top 7 inches of the stone were exposed, at which point it measured 6 inches N-S by 10 inches E-W. The west edge of the stone was partially exposed and measured to be approximately 15 inches tall. No specific marks were detected on the stone. The north and south sides were flat and vertical while the stone rounded across the top in the E-W dimensions. The stone was accepted as providing the best available evidence of the original position of the corner and was held as marking the corner. A Harrison monument was set directly over the top, high point of the stone.

This corner was originally established as a wood post in 1820.



Kenneth E. Hedge
Kenneth E. Hedge, County Surveyor

James S. Swift
James S. Swift, IN LS 20200054
October 10, 2018

Jackson
Township

Section 21
T18N, R2W

Section 28
T18N, R2W

SECTION CORNER RECORD

SW 400-1000

BOONE COUNTY SURVEYOR'S OFFICE

State Plane grid coordinates NAD83 (2011):

North: 1724143.45 East: 3072032.74 (U.S. survey feet)

Type of monument: Harrison, 4" disk 'Section Corner'

Depth: Six inches below adjacent gravel road surface

Indiana tie card references:

IN02_T18NR2W20_80 IN02_T18NR2W21_72

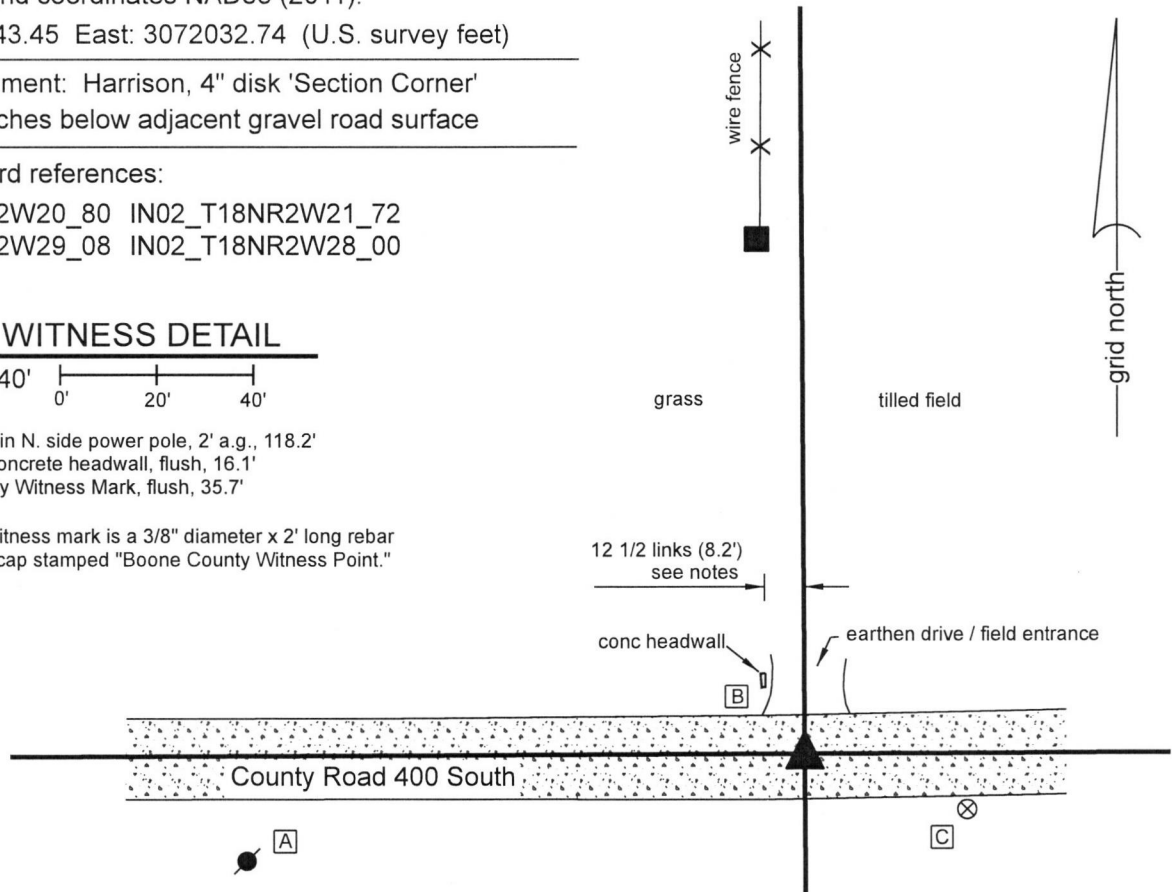
IN02_T18NR2W29_08 IN02_T18NR2W28_00

CORNER WITNESS DETAIL

SCALE 1" = 40'

- A - Mag Nail set in N. side power pole, 2' a.g., 118.2'
- B - S.E. corner concrete headwall, flush, 16.1'
- C - Boone County Witness Mark, flush, 35.7'

Boone County witness mark is a 3/8" diameter x 2' long rebar bearing a metal cap stamped "Boone County Witness Point."

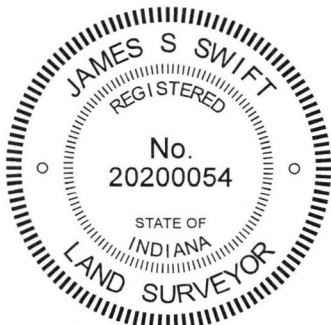


The Harrison monument was set over a stone found.

The position of this corner is discussed in significant detail in BCS records of 1887 and 1889. A record of February 14-16, 1887 gives this explanation for the establishment of the corner: "Point for E found by running line from C and doubling distance from C to D making C to E 79.94 & C to D 39.97 & D to E 39.97." Note, in this record the subject corner is referred to as corner E. A subsequent record of May 2, 1887 states, with respect to this corner, "Set two rocks. One 12x8x6 +. The other 8x7x5 +." Another record, dated June 3, 1889 appears to be the report of a survey performed in response to land owners who questioned the position of the corner and discusses in considerable detail the position of the corner relative to other proximate corners, concluding with the statement, "The parties requiring the resurvey consent that the corner be confirmed as set." This record confirms the position of the two rocks set in 1887. The description of a survey dated May 31, 1943 describes the east line of the property to the west as beginning 12 1/2 links west of the corner. No recent BCS tie cards were found referencing this corner.

The corner was excavated on October 8, 2018. Prior to excavation, no metal monuments were found in the road. A position was calculated for the corner by doubling the distance between the section corner 1/2 mile east (see Corner SW 400-950) and evidence of the corner 1/4 mile east in the form of a centerline/fenceline intersection. It was observed that this calculated position fell almost exactly 12 1/2 links east of the southerly prolongation of a fence beginning approximately 100 feet north of the road, consistent with the 1943 description. Excavation at the calculated position revealed both stones described in the May 2, 1887 record. The top stone was found at 16 inches deep. The stone was vertical, measuring 8 inches tall by 7 inches N-S by 5 inches E-W. The stone was of a reasonably soft material and the top of the stone was damaged during excavation. No mark was found. The stone was removed and the lower stone was found at 26 inches deep, directly below the top stone. This stone measured 12 inches E-W by 8 inches N-S. The thickness of the stone was not measured. An etched "+" mark was clearly visible at the center of the top of the stone. The two stones were accepted as marking the corner. The top stone was removed, the lower stone was left in place and a Harrison monument was set directly over the mark on the lower stone.

This corner was originally established as a wood post in 1820.



Kenneth E. Hedge
 Kenneth E. Hedge, County Surveyor

James S. Swift
 James S. Swift, IN LS 20200054
 November 20, 2018

Jackson Township

Section 20 T18N, R2W	Section 21 T18N, R2W
Section 29 T18N, R2W	Section 28 T18N, R2W