

# SECTION CORNER RECORD

SW 300-1000

## BOONE COUNTY SURVEYOR'S OFFICE

State Plane grid coordinates NAD83 (2011):

North: 1729427.48 East: 3072005.57 (U.S. survey feet)

Type of monument: Harrison, 4" disk 'Section Corner'

Depth: One inch below adjacent road surface

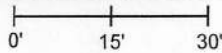
Indiana tie card references:

IN02\_T18NR2W16\_72 IN02\_T18NR2W17\_80

IN02\_T18NR2W20\_08 IN02\_T18NR2W21\_00

### CORNER WITNESS DETAIL

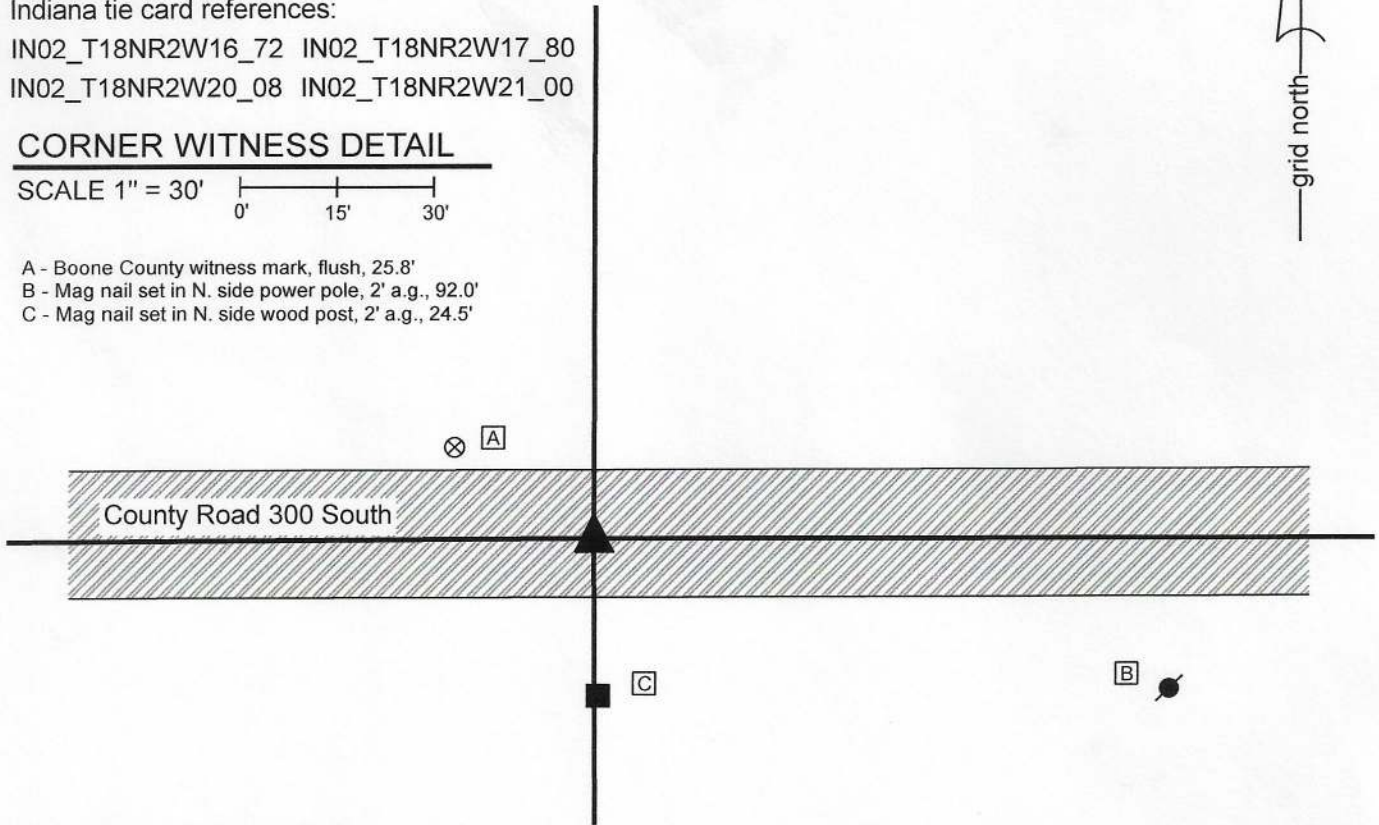
SCALE 1" = 30'



A - Boone County witness mark, flush, 25.8'

B - Mag nail set in N. side power pole, 2' a.g., 92.0'

C - Mag nail set in N. side wood post, 2' a.g., 24.5'

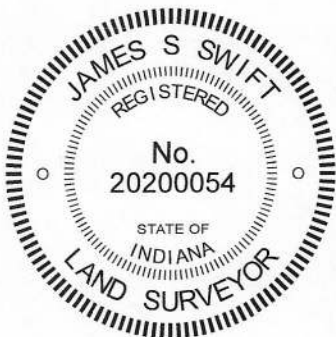


The Harrison monument was set over a stone found.

A BCS record dated April 18-19, 1870 states, with respect to this corner, "A rock that was set from stake where I run road." A BCS tie card dated August 25, 1967 states "No stone."

This corner was excavated on June 25, 2020. Prior to excavation, a mag nail with washer was found at 3 inches below the surface of the road. Excavation revealed a vertical section of railroad rail found at 12 inches deep, directly below the mag nail. A rotten, but generally intact 2 inch by 2 inch wood hub was found at 12 inches deep, slightly south and east of the rail. Further excavation revealed a stone found at 19 inches deep, below the wood hub. The stone was found to be 8 inches E-W by 8 inches N-S by 8 inches tall. The stone was embedded in the clay layer below the road bed, protruding 2 inches into the bottom of the road bed. No specific marks were observed on the stone but it was oriented such that it had a clear high point at the top, center. The stone, being oriented in cardinal directions with a distinct high point and embedded in the clay layer below the road, matched the characteristics of other stones found throughout county for which the record reference is "a rock (or stone) that was set." The stone was accepted as the best available evidence of the corner. The stone was left in place and a Harrison monument was set directly over the top, center and high point of the stone. The nail and rail, both removed during excavation, had been 1.1 foot north and 0.6 foot west of the top, center of the stone. Though the 1967 tie card states simply, "No stone", it is believed most likely that the vertical section of railroad rail was set in association with the creation of that tie card. The call of "no stone" is erroneous, as a stone was present, slightly south and east of the rail.

This corner was originally established as a wood post in 1820.



*Kenneth E. Hedge*  
 Kenneth E. Hedge, County Surveyor

*James S. Swift*  
 James S. Swift, IN LS 20200054  
 July 7, 2020

Jackson Township

Section 17 T18N, R2W	Section 16 T18N, R2W
Section 20 T18N, R2W	Section 21 T18N, R2W

# SECTION CORNER RECORD

SW 300-1050

## BOONE COUNTY SURVEYOR'S OFFICE

State Plane grid coordinates NAD83 (2011):

North: 1729409.24 East: 3069363.56 (U.S. survey feet)

Type of monument: Harrison, 4" disk 'Section Corner'

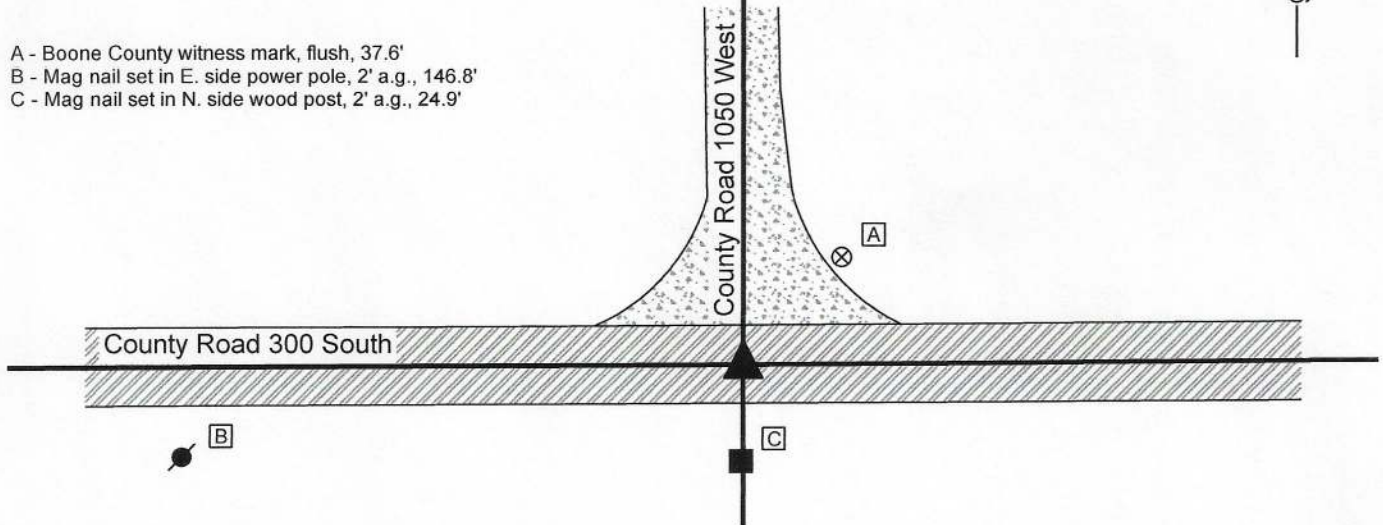
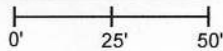
Depth: One inch below adjacent road surface

Indiana tie card references:

IN02\_T18NR2W17\_76 IN02\_T18NR2W20\_04

### CORNER WITNESS DETAIL

SCALE 1" = 50'



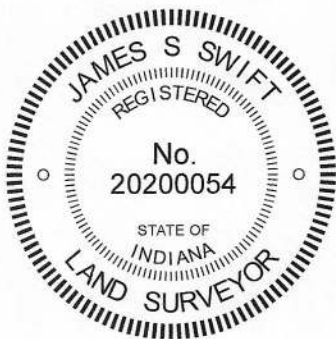
- A - Boone County witness mark, flush, 37.6'
- B - Mag nail set in E. side power pole, 2' a.g., 146.8'
- C - Mag nail set in N. side wood post, 2' a.g., 24.9'

The Harrison monument was set over a stone found.

A BCS record of August 24, 1888 states, with respect to this corner, "Reestablished from roots and stump of Oak. Set a rock 21,16x11 marked +. Also one under it at 14, 12 by 5 in. marked +." No recent BCS tie cards were found referencing this corner.

Excavation was performed at this corner on June 25, 2020. Prior to excavation, a mag nail was found at the surface of the road at the approximate center of the intersection of the two county roads. Another mag nail was found at the surface of the road 5.1 feet north thereof. Excavation revealed a stone found at 15 inches deep, north of the southerly mag nail and south of the other. The stone was found to measure 14 inches E-W by 9 inches N-S. 16 inches were exposed along the south edge of the stone. Both the north and south edges of the stone were flat and vertical. Probing indicated the presence of another stone found below at 19 inches below the top of the upper stone. The top stone was embedded in the clay layer below the road bed, protruding approximately 2 inches into the bottom of the road bed. No specific marks were observed on the upper stone, though it was observed that top, west edge of the stone appeared to have been previously broken off, presumably by road grading equipment. The upper stone measured uniformly 2 inches less than the dimensions recited in the 1888 record. This phenomenon has been observed at numerous other corners, though certainly not the majority of corners, throughout the county. It is believed that one of the rulers used by the Boone County Surveyors of the late 1800s was broken or faulty, resulting in a uniform mismeasurement of 2 inches. The two stones were accepted as being the same monuments as called in the 1888 record and were held as marking the corner. The stones were left in place and a Harrison monument was set directly over the top, center of the top stone. The Mag nails, both removed during excavation, had been 1.5 foot south and 0.1 foot west (southerly) and 3.6 feet north and 0.3 foot west (northerly), respectively, of the top, center of the stone. No additional evidence, including metal monuments, was found below the nails.

This corner was originally established as a wood post in 1820.



*Kenneth E. Hedge*  
Kenneth E. Hedge, County Surveyor

*James S. Swift*  
James S. Swift, IN LS 20200054  
July 7, 2020

Jackson Township

Section 17  
T18N, R2W

Section 20  
T18N, R2W

# SECTION CORNER RECORD

SW 300-1100

## BOONE COUNTY SURVEYOR'S OFFICE

State Plane grid coordinates NAD83 (2011):

North: 1729397.70 East: 3066722.34 (U.S. survey feet)

Type of monument: Harrison, 4" disk 'Section Corner'

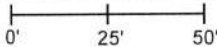
Depth: One inch below adjacent road surface

Indiana tie card references:

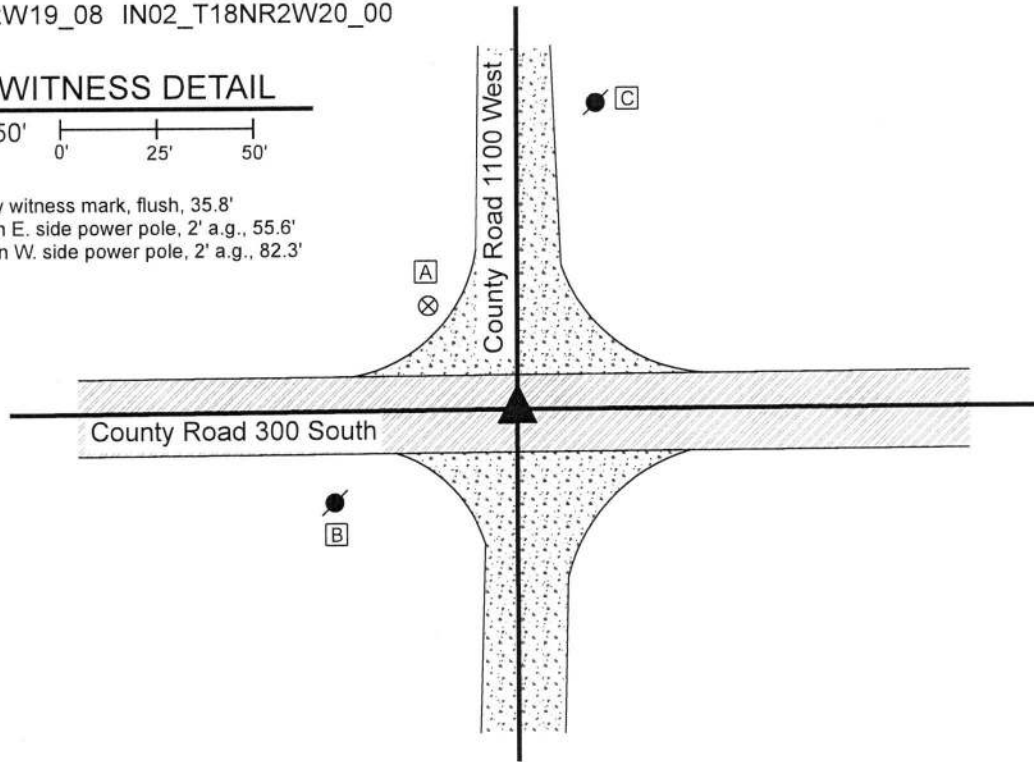
IN02\_T18NR2W18\_80 IN02\_T18NR2W17\_72

IN02\_T18NR2W19\_08 IN02\_T18NR2W20\_00

### CORNER WITNESS DETAIL

SCALE 1" = 50' 

- A - Boone County witness mark, flush, 35.8'
- B - Mag nail set in E. side power pole, 2' a.g., 55.6'
- C - Mag nail set in W. side power pole, 2' a.g., 82.3'



The Harrison monument was set over a stone found.

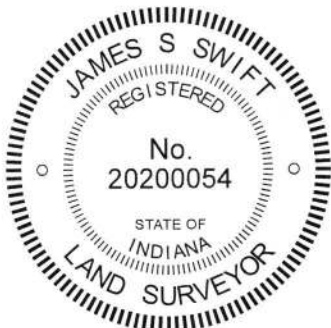
A BCS record of August 24, 1888 states, with respect to this corner, "Reestablished from stump of Oak bearing tree, made when same corner was reestablished April 8, 1867 (old stake had been in place). Set two rocks. One 14,7,3 +. Top one 15,14,7 + SE corner of brick school house bears N 52 1/4 W 99 links." A subsequent record of September 23, 1912 states "Relocated from roots of stump of Oak W. Two rocks, one 14x7x3 +. Top one 15x14x7 +." The 1912 record also calls for the witness to the corner of the brick school house.

A BCS tie card dated August 23, 1974 shows the corner, but does not state what monument was set or found.


This corner was excavated on October 18, 2019. Prior to excavation, a railroad spike was found at 7 inches below grade. Excavation revealed a vertical section of railroad rail found at 13 inches deep, directly below the railroad spike. It is considered most likely that the railroad rail was set in association with the creation of the 1974 tie card.

Further excavation revealed a stone found at 24 inches deep, slightly northeast of the rail and spike. The stone is 14 inches N-S by 7 inches E-W by 15 inches tall, as measured on the east side. An etched "+" mark was distinctly visible on the top, center of the stone. Probing indicated that another stone is situated below the stone which was exposed. The stones were accepted as being the same monuments described in the 1888 and 1912 records and held as marking the corner. The stones were left in place and a Harrison monument was set directly over the etched mark on the top of the upper stone. The railroad spike and railroad rail, both removed during excavation, had been 0.6 foot south and 0.8 foot east of the mark on the stone.

This corner was originally established as a wood post in 1820.



  
 Kenneth E. Hedge, County Surveyor

  
 James S. Swift, IN LS 20200054  
 December 11, 2019

Jackson Township

Section 18 T18N, R2W	Section 17 T18N, R2W
Section 19 T18N, R2W	Section 20 T18N, R2W

# SECTION CORNER RECORD

# SW 350-1000

## BOONE COUNTY SURVEYOR'S OFFICE

State Plane grid coordinates NAD83 (2011):

North: 1726786.32 East: 3072015.12 (U.S. survey feet)

Type of monument: Harrison, 4" disk 'Section Corner'

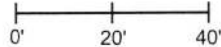
Depth: Four inches above adjacent grade

Indiana tie card references:

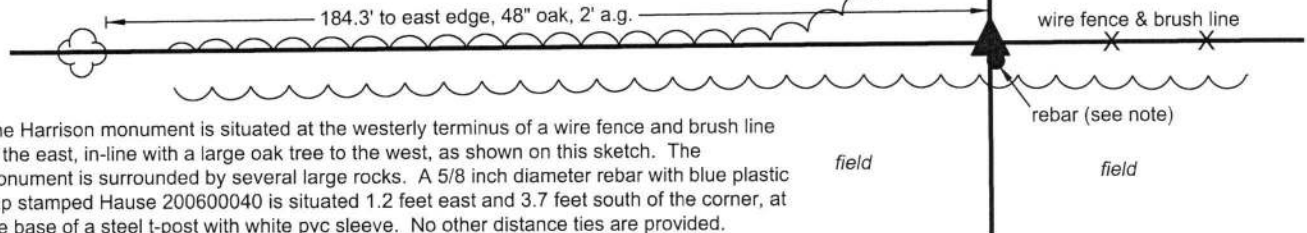
IN02\_T18NR2W20\_44 IN02\_T18NR2W21\_36

### CORNER WITNESS DETAIL

SCALE 1" = 40'



- edge field / grass & brush

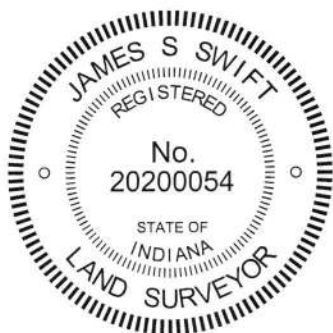


The Harrison monument is situated at the westerly terminus of a wire fence and brush line to the east, in-line with a large oak tree to the west, as shown on this sketch. The monument is surrounded by several large rocks. A 5/8 inch diameter rebar with blue plastic cap stamped Hause 200600040 is situated 1.2 feet east and 3.7 feet south of the corner, at the base of a steel t-post with white pvc sleeve. No other distance ties are provided.

The Harrison monument was set over the base of a wood corner post found.

A BCS record dated April 20-22, 1870 states, with respect to this corner, "Reestablished from stump of Oak, set two rocks. One rock 6.5-1/2.5 +. Top rock 24.15.7+." No recent BCS tie cards were found referencing this corner, nor were any surveys recorded in the Office of the Boone County Recorder found referencing this corner. Excavation was performed at this corner on October 3 and 18, 2018. Prior to excavation, a wood corner post at the westerly terminus of an ancient fence to the east was observed, surrounded by numerous rocks, several of which were quite large. Also, a rebar bearing the plastic cap of Jonathon E. Hause, LS No.20600040, was found to the south and east of the post. None of the large rocks found around the post matched the description of the rocks set in 1870. These rocks were moved to the side and excavation around the base of the post and up to 5 feet east revealed numerous additional rocks, none of which matched the record dimensions, nor appeared to have been purposely set as corner stones. Substantial probing and minor excavation in the immediate vicinity of the Hause capped rebar revealed no further evidence of the corner. Mr. Hause's office was contacted on October 3, 2018 and a survey dated November 14, 2012 was supplied. The survey shows the subject corner as "calculated position." The calculated position appears to match the position of the found rebar. The associated Surveyor's Report does not reference the subject corner and the survey specifically states that no uncertainties were found with respect to occupation and possession. No explanation was offered either on the survey or in response to verbal questions as to why the rebar was set at variance with the obvious physical evidence of the corner in the form of the found wood end post. Although the final position of the section corner to the north has not been established as of the date of publication of this document, it is noted that the position of the wood end post is much closer to a theoretical midpoint between the section corners to the north and south than is the capped rebar. Both the original federal notes of 1820 and the synthesis of BCS records of 1870 and 1895 indicate that the corner should be at or close to equidistant from the section corners to the north and south. The wood post fits better with this expectation than does the capped rebar. It is also noted that the position for the southeast corner of section 21 as shown on the Hause survey is substantially west of the true corner, as marked by a Harrison monument set over a found stone (see BCS Corner SW 400-1000). It is further noted that an ancient wood corner post with fencing to the south and east, found 940.3 feet east of the subject corner, falls along the line between the found wood end post and a fence post on the west edge of County Road 950 west, providing witness evidence of the center of section 21. The preponderance of evidence clearly indicates that the found end post represents the best available evidence of the corner. The top of the post was broken off, the base of the post was encased in concrete, and a Harrison monument was set directly over the base of the post. The found rebar was left in place, 1.2 feet east and 3.7 feet south of the corner.

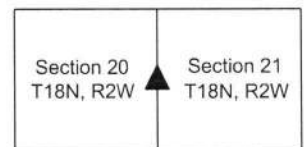
This corner was originally established as a wood post in 1820.



*Kenneth E. Hedge*  
 Kenneth E. Hedge, County Surveyor

*James S. Swift*  
 James S. Swift, IN LS 20200054  
 February 6, 2019

Jackson Township



# SECTION CORNER RECORD

SW 350-1100

## BOONE COUNTY SURVEYOR'S OFFICE

State Plane grid coordinates NAD83 (2011):

North: 1726759.66 East: 3066726.35 (U.S. survey feet)

Type of monument: Harrison, 4" disk 'Section Corner'

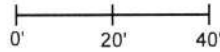
Depth: One inch below adjacent road surface

Indiana tie card references:

IN02\_T18NR2W19\_44 IN02\_T18NR2W20\_36

### CORNER WITNESS DETAIL

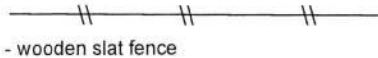
SCALE 1" = 40'



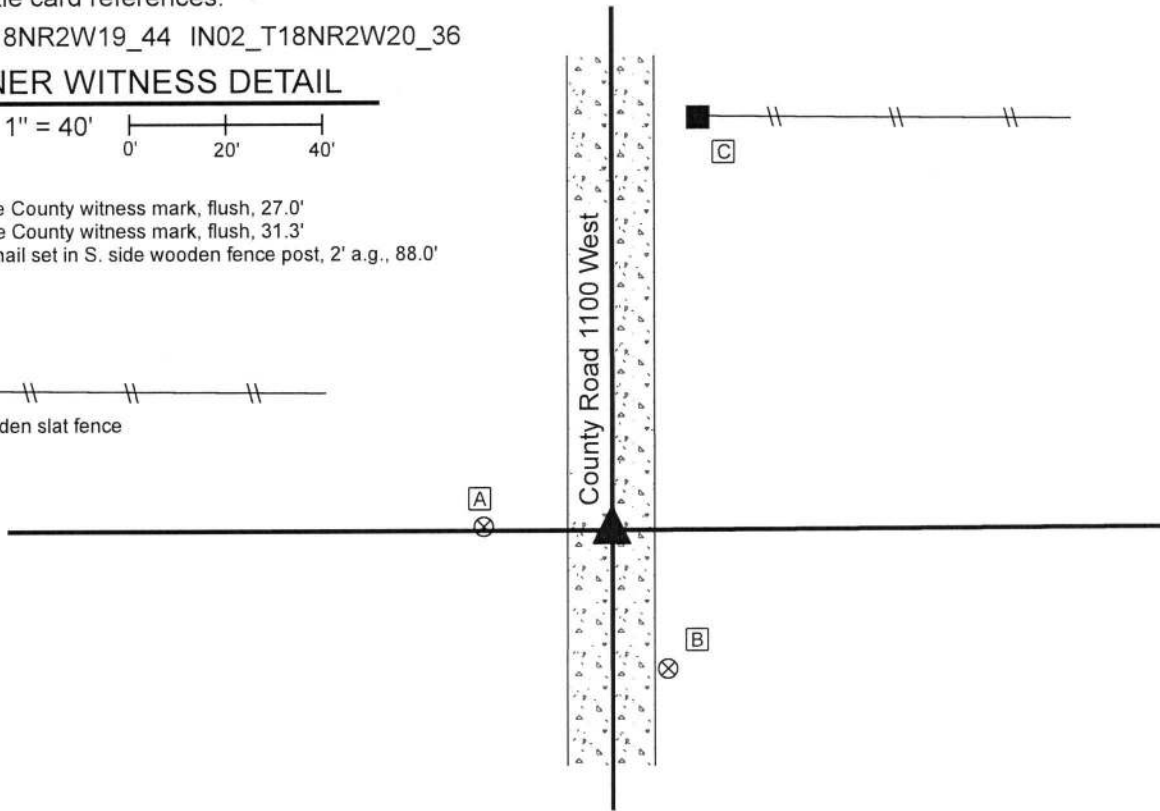
A - Boone County witness mark, flush, 27.0'

B - Boone County witness mark, flush, 31.3'

C - Mag nail set in S. side wooden fence post, 2' a.g., 88.0'



- wooden slat fence



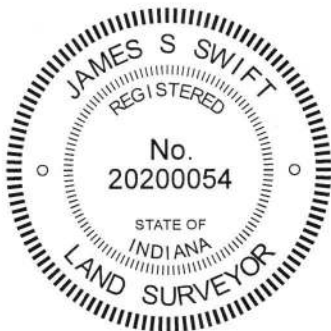
The Harrison monument was set over a stone found.

A BCS record dated February 28, 1887 states, with respect to this corner, "Reestablished as per measure. Set Rock 10 10 16 + on side...." A BCS record dated September 23, 1912 calls the corner "Rock 10x10x18."

No recent BCS tie cards were found referencing this corner.

Excavation was performed at this corner on October 17, 2019. Prior to excavation, a railroad spike was found at 6 inches below grade. No post was found on the edge of the road at the time of excavation, but it is known that the railroad spike was previously in-line with a post on the west side of the road. Excavation revealed a stone found at 15 inches deep, slightly northeast of the railroad spike. The top of the stone appeared to have been previously broken off, presumably by road grading equipment. With the top 8 inches of the stone exposed, it measured 10 inches N-S by 10 inches E-W. The full height of the stone was not measured, though it was confirmed to be at least 12 inches tall. As noted, the top appeared to be broken, hence the height has changed since the stone was set. The stone was embedded in the clay layer below the road, protruding approximately 6 inches into a soft mix of clay and sand at the bottom of the road bed. No specific marks were found on the stone. Clearly vertical and matching the two dimensions common to both records, the stone was accepted as marking the corner. The top 8 inches of the stone were embedded in concrete and a Harrison monument was set directly over the top, center of the stone. The railroad spike, removed during excavation, had been 0.7 foot south and 0.6 foot west of the top, center of the stone.

This corner was originally established in 1820.



*Kenneth E. Hedge*  
Kenneth E. Hedge, County Surveyor

*James S. Swift*  
James S. Swift, IN LS 20200054  
December 3, 2019

Jackson Township

Section 19 T18N, R2W	Section 20 T18N, R2W
-------------------------	-------------------------

# SECTION CORNER RECORD

SW 400-1000

## BOONE COUNTY SURVEYOR'S OFFICE

State Plane grid coordinates NAD83 (2011):

North: 1724143.45 East: 3072032.74 (U.S. survey feet)

Type of monument: Harrison, 4" disk 'Section Corner'

Depth: Six inches below adjacent gravel road surface

Indiana tie card references:

IN02\_T18NR2W20\_80 IN02\_T18NR2W21\_72

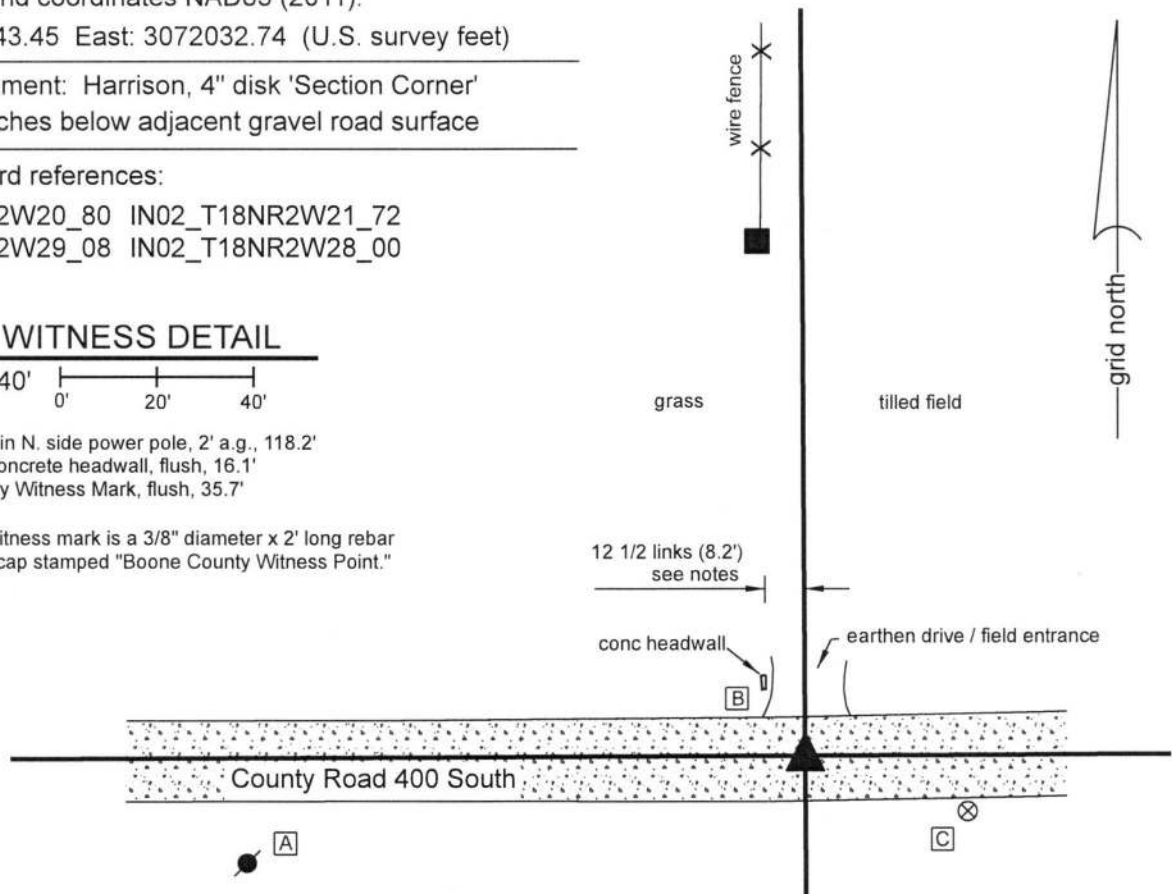
IN02\_T18NR2W29\_08 IN02\_T18NR2W28\_00

### CORNER WITNESS DETAIL

SCALE 1" = 40'

- A - Mag Nail set in N. side power pole, 2' a.g., 118.2'
- B - S.E. corner concrete headwall, flush, 16.1'
- C - Boone County Witness Mark, flush, 35.7'

Boone County witness mark is a 3/8" diameter x 2' long rebar bearing a metal cap stamped "Boone County Witness Point."

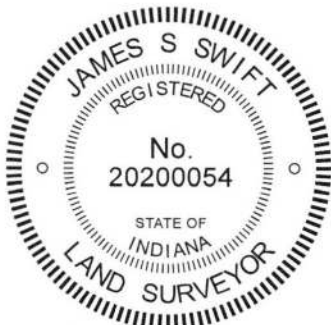


The Harrison monument was set over a stone found.

The position of this corner is discussed in significant detail in BCS records of 1887 and 1889. A record of February 14-16, 1887 gives this explanation for the establishment of the corner: "Point for E found by running line from C and doubling distance from C to D making C to E 79.94 & C to D 39.97 & D to E 39.97." Note, in this record the subject corner is referred to as corner E. A subsequent record of May 2, 1887 states, with respect to this corner, "Set two rocks. One 12x8x6 +. The other 8x7x5 +." Another record, dated June 3, 1889 appears to be the report of a survey performed in response to land owners who questioned the position of the corner and discusses in considerable detail the position of the corner relative to other proximate corners, concluding with the statement, "The parties requiring the resurvey consent that the corner be confirmed as set." This record confirms the position of the two rocks set in 1887. The description of a survey dated May 31, 1943 describes the east line of the property to the west as beginning 12 1/2 links west of the corner. No recent BCS tie cards were found referencing this corner.

The corner was excavated on October 8, 2018. Prior to excavation, no metal monuments were found in the road. A position was calculated for the corner by doubling the distance between the section corner 1/2 mile east (see Corner SW 400-950) and evidence of the corner 1/4 mile east in the form of a centerline/fenceline intersection. It was observed that this calculated position fell almost exactly 12 1/2 links east of the southerly prolongation of a fence beginning approximately 100 feet north of the road, consistent with the 1943 description. Excavation at the calculated position revealed both stones described in the May 2, 1887 record. The top stone was found at 16 inches deep. The stone was vertical, measuring 8 inches tall by 7 inches N-S by 5 inches E-W. The stone was of a reasonably soft material and the top of the stone was damaged during excavation. No mark was found. The stone was removed and the lower stone was found at 26 inches deep, directly below the top stone. This stone measured 12 inches E-W by 8 inches N-S. The thickness of the stone was not measured. An etched "+" mark was clearly visible at the center of the top of the stone. The two stones were accepted as marking the corner. The top stone was removed, the lower stone was left in place and a Harrison monument was set directly over the mark on the lower stone.

This corner was originally established as a wood post in 1820.



*Kenneth E. Hedge*  
Kenneth E. Hedge, County Surveyor

*James S. Swift*  
James S. Swift, IN LS 20200054  
November 20, 2018

Jackson Township

Section 20 T18N, R2W	Section 21 T18N, R2W
Section 29 T18N, R2W	Section 28 T18N, R2W

# SECTION CORNER RECORD

SW 400-1050

## BOONE COUNTY SURVEYOR'S OFFICE

State Plane grid coordinates NAD83 (2011):

North: 1724131.58 East: 3069366.56 (U.S. survey feet)

Type of monument: Harrison, 4" disk 'Section Corner'

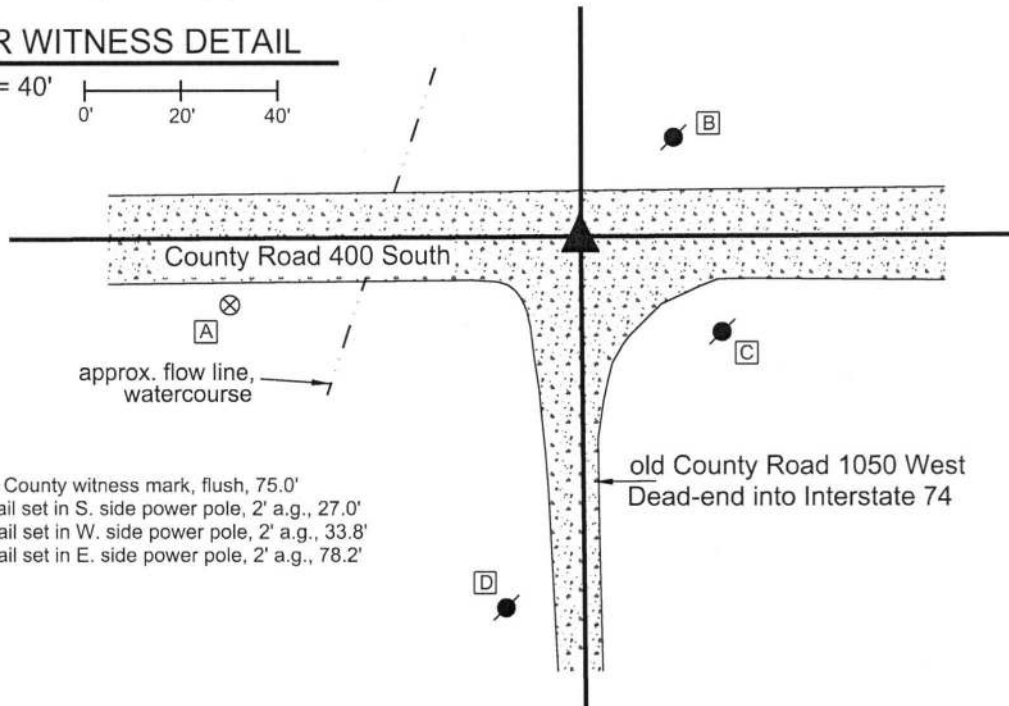
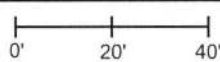
Depth: Six inches below adjacent gravel road surface

Indiana tie card references:

IN02\_T18NR2W20\_76 IN02\_T18NR2W29\_04

### CORNER WITNESS DETAIL

SCALE 1" = 40'



- A - Boone County witness mark, flush, 75.0'
- B - Mag nail set in S. side power pole, 2' a.g., 27.0'
- C - Mag nail set in W. side power pole, 2' a.g., 33.8'
- D - Mag nail set in E. side power pole, 2' a.g., 78.2'

The Harrison monument was set in place of a square headed bolt spike.

This corner is documented in considerable detail in BCS records of February 14-16, March 10, and May 2, 1887. The final entry in May, 1887 states that a rock 11x7x5 inches marked + was set over a three cornered rock marked +. No BCS tie cards were found referencing this corner.

Excavation was performed at this corner on October 8, 2018. Prior to excavation, a square headed bolt spike was found at 8 inches below the surface of the gravel road. This bolt spike was originally found as part of the current BCS section corner perpetuation project in July, 2011. Excavation revealed fragments of an old wood stake approximately below the bolt spike. Further excavation of an area extending 4 feet north, 4 feet east, 3 feet south and 3 feet west of the spike revealed no further evidence of the corner. Excavation was performed to 22 inches deep, which appeared to be below the bottom of the road bed. It is noted, though, that the road bed in this area is significantly influenced by the presence of a large drainage culvert slightly to the west of corner and that the overall ground slopes toward this culvert. The bolt spike was removed during excavation and found to have a 12 inch long shaft of 3/4 inches diameter. The bolt spike and fragments of wood stake fit well with the local evidence of the corner in the form of the approximate center of County Road 400 South and the evident center of County Road 1050 West. It is noted that C.R. 1050 dead-ends into Interstate 74 and does not appear to be actively maintained as a public road. The spike and fragments of stake fit well with the relative positions of proximate corners and were accepted as providing the best available evidence of the corner. It is considered most likely that the stone set in 1887 was removed in association with installation of the culvert to the west or some other human or natural action associated with the presence of the watercourse.

The bolt spike and fragments of wood stake were removed during excavation. A Harrison monument was set in the position of the bolt spike as originally found. This corner was originally established as a wood post in 1820.



*Kenneth E. Hedge*  
Kenneth E. Hedge, County Surveyor

*James S. Swift*  
James S. Swift, IN LS 20200054

October 31, 2018

Jackson Township

Section 20  
T18N, R2W

Section 29  
T18N, R2W

# SECTION CORNER RECORD

SW 400-1100

## BOONE COUNTY SURVEYOR'S OFFICE

State Plane grid coordinates NAD83 (2011):

North: 1724118.70 East: 3066733.25 (U.S. survey feet)

Type of monument: INDOT Type B

Depth: two inches below adjacent road surface

Indiana tie card references:

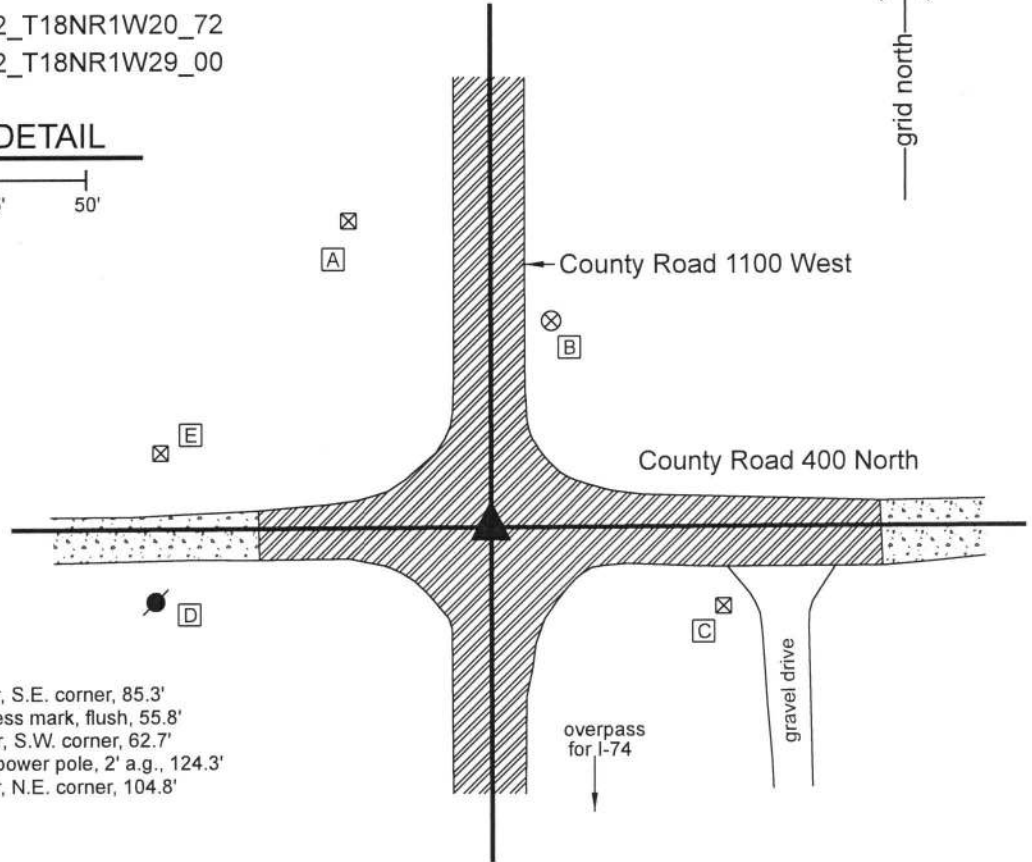
IN02\_T18NR2W19\_80 IN02\_T18NR1W20\_72

IN02\_T18NR2W30\_08 IN02\_T18NR1W29\_00

### CORNER WITNESS DETAIL

SCALE 1" = 50'

0' 25' 50'



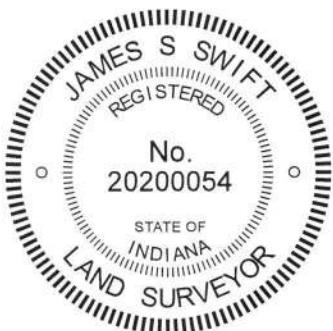
- A - INDOT R/W marker, S.E. corner, 85.3'
- B - Boone County witness mark, flush, 55.8'
- C - INDOT R/W marker, S.W. corner, 62.7'
- D - Mag nail in E. side power pole, 2' a.g., 124.3'
- E - INDOT R/W marker, N.E. corner, 104.8'

The INDOT Type B monument was found in place and held as marking the corner.

A BCS record dated February 28, 1887 states, with respect to this corner, "Took out the two small rocks and put one in 14,17,30 marked +." A BCS record dated September 23, 1912 confirms the presence of the stone called in the earlier record, stating, "Rock 14.17.30 +." A BCS tie card dated March 20, 1969 shows the corner as a "brass pin on monument, State Highway Department."

This corner falls in an area of fill in the approach to the bridge which represents the overpass of County Road 1100 West over Interstate 74. The found monument is an INDOT Type B monument matching the description in the 1969 BCS tie card. The plans for Interstate 74, approved by the Indiana State Highway Commission on March 22, 1963, show the overpass as project 74-2(42)35. The plans do not specifically call for a section corner but show P.O.T 42+53.5 of line S-13-A = P.O.T 50+00 of line S-14-A at the center of the intersection and show the intersecting lines as COUNTY ROAD (gravel) SECTION LINE. The found Type B monument is believed to represent this P.O.T. The corner was not excavated and the found monument was accepted as marking the corner. It is not known if this monument replaced, is above, or at variance with the position the stone called in the 1887 and 1912 BCS records. The monument is believed to be the same monument as is called in the 1969 BCS tie card.

This corner was originally established as a wood post in 1820.



*Kenneth E. Hedge*  
Kenneth E. Hedge, County Surveyor

*James S. Swift*  
James S. Swift, IN LS 20200054  
March 13, 2019

Jackson Township

Section 19 T18N, R2W	Section 20 T18N, R2W
Section 30 T18N, R2W	Section 29 T18N, R2W