

SECTION CORNER RECORD

BOONE COUNTY SURVEYOR'S OFFICE

NW 800-1100

State Plane grid coordinates NAD83 (2011):

North: 1788128.40 East: 3066534.22 (U.S. survey feet)

Type of monument: Harrison, 4" disk 'Section Corner'

Depth: One inch below adjacent road surface

Indiana tie card references:

IN02_T20NR2W19_80 IN02_T20NR2W20_72

IN02_T20NR2W30_08 IN02_T20NR2W29_00

CORNER WITNESS DETAIL

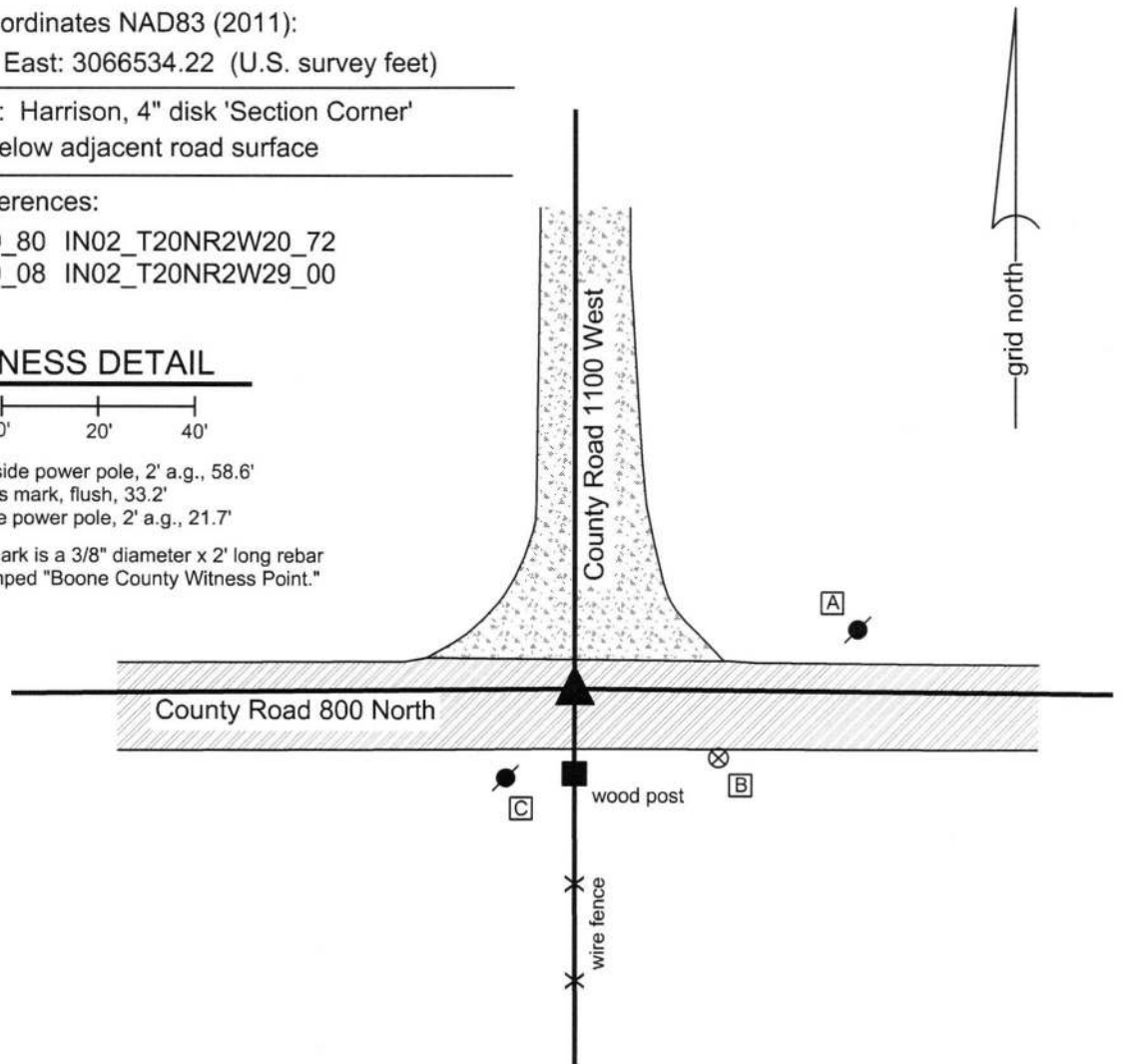
SCALE 1" = 40'

A - Mag nail set in S.W. side power pole, 2' a.g., 58.6'

B - Boone County witness mark, flush, 33.2'

C - Mag nail set in N. side power pole, 2' a.g., 21.7'

Boone County witness mark is a 3/8" diameter x 2' long rebar bearing a metal cap stamped "Boone County Witness Point."



The Harrison monument was set over a stone found.

A BCS record dated October 21, 1867 states, with respect to this corner, "A Stone that was placed." A BCS tie card dated August 16, 1971 states "No Stone - RRR put in."

This corner was excavated on June 15, 2016. Prior to excavation, a Mag nail was found at 3 inches deep in a hole in the asphalt roadway.

Excavation revealed a vertical section of railroad rail found at 5 inches deep, slightly north and east of the Mag nail. Further excavation revealed a stone found at 17 inches, several feet north of the nail and rail. With the top 6 inches of the stone exposed, it measured 8.5 inches E-W by 6 inches N-S. The south side of the stone was exposed to its bottom, 10 inches below the top of the stone. The south side is vertical and flat while the north side is more sloping. The stone had a distinct ridge across the top oriented in the E-W direction. No specific marks were found on the stone. The stone was held as marking the corner and a Harrison monument was set over the center of the E-W ridge. The Mag nail and railroad rail, removed during excavation, had been 3.0 feet south and 0.5 foot west of the stone.

This corner was originally established as a wood post in 1829.



Kenneth E. Hedge
 Kenneth E. Hedge, County Surveyor

James S. Swift
 James S. Swift, IN LS 20200054
 March 23, 2017

Sugar Creek Twp

Section 19 T20N, R2W	Section 20 T20N, R2W
Section 30 T20N, R2W	Section 29 T20N, R2W

PHOTOGRAPHIC DOCUMENTATION

Date of photography: June 15, 2016

The stone as it was originally exposed, circled in red.



View showing the exposed, vertical south edge of the stone.



View from the south, looking across the stone and north along County Road 1100 West.



View from the north, looking across the stone and along the existing fence to the south.



For details and documentation, refer to related sheet "Section Corner Record."

SECTION CORNER RECORD

BOONE COUNTY SURVEYOR'S OFFICE

NW 800-1150

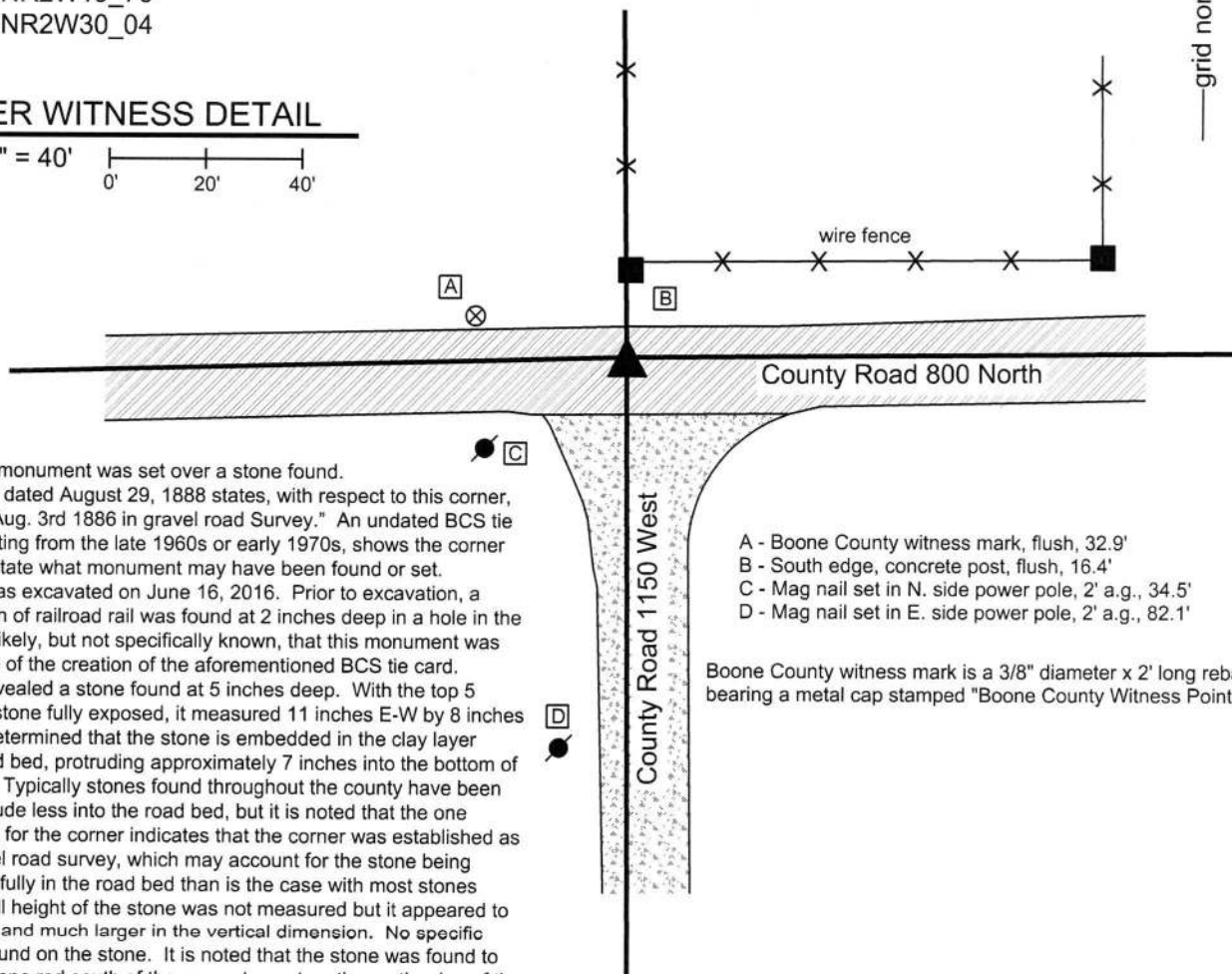
State Plane grid coordinates NAD83 (2011):
 North: 1788104.08 East: 3063875.71 (U.S. survey feet)

Type of monument: Harrison, 4" disk 'Section Corner'
 Depth: One inch below adjacent road surface

Indiana tie card references:
 IN02_T20NR2W19_76
 IN02_T20NR2W30_04

CORNER WITNESS DETAIL

SCALE 1" = 40'



The Harrison monument was set over a stone found. A BCS record dated August 29, 1888 states, with respect to this corner, "Established Aug. 3rd 1886 in gravel road Survey." An undated BCS tie card, likely dating from the late 1960s or early 1970s, shows the corner but does not state what monument may have been found or set. This corner was excavated on June 16, 2016. Prior to excavation, a vertical section of railroad rail was found at 2 inches deep in a hole in the asphalt. It is likely, but not specifically known, that this monument was set at the time of the creation of the aforementioned BCS tie card. Excavation revealed a stone found at 5 inches deep. With the top 5 inches of the stone fully exposed, it measured 11 inches E-W by 8 inches N-S. It was determined that the stone is embedded in the clay layer below the road bed, protruding approximately 7 inches into the bottom of the road bed. Typically stones found throughout the county have been found to protrude less into the road bed, but it is noted that the one reliable record for the corner indicates that the corner was established as part of a gravel road survey, which may account for the stone being situated more fully in the road bed than is the case with most stones found. The full height of the stone was not measured but it appeared to be substantial and much larger in the vertical dimension. No specific marks were found on the stone. It is noted that the stone was found to be situated at one rod south of the concrete post on the north edge of the road. The stone was accepted as marking the corner. The top 5 inches of the stone were embedded in concrete and a Harrison monument was set over the top, center of the stone. The vertical section of railroad rail, removed during excavation, had been 1.9 feet south and 1.3 feet east of the stone. This corner was originally established as a wood post in 1829.

- A - Boone County witness mark, flush, 32.9'
- B - South edge, concrete post, flush, 16.4'
- C - Mag nail set in N. side power pole, 2' a.g., 34.5'
- D - Mag nail set in E. side power pole, 2' a.g., 82.1'

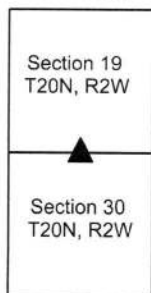
Boone County witness mark is a 3/8" diameter x 2' long rebar bearing a metal cap stamped "Boone County Witness Point."



Kenneth E. Hedge
 Kenneth E. Hedge, County Surveyor

James S. Swift
 James S. Swift, IN LS 20200054
 March 23, 2017

Sugar Creek Township



PHOTOGRAPHIC DOCUMENTATION

Date of photography: June 16, 2016

The stone as it was originally exposed.



The stone more fully exposed, from above and north.



View from above the stone looking south along County Road 1150 West.



View from the west looking across the stone and east along County Road 800 North.



For details and documentation, refer to related sheet "Section Corner Record."

SECTION CORNER RECORD

NW 850-1100

BOONE COUNTY SURVEYOR'S OFFICE

State Plane grid coordinates NAD83 (2011):

North: 1790802.31 East: 3066537.70 (U.S. survey feet)

Type of monument: Harrison, 4" disk 'Section Corner'


Depth: four inches below adjacent gravel road surface

Indiana tie card references:

IN02_T20NR2W19_44 IN02_T20NR2W20_36

CORNER WITNESS DETAIL

SCALE 1" = 50'



A - Mag nail set in S.E. side power pole, 2' a.g., 195.1'

B - Boone County witness mark, flush, 33.0'

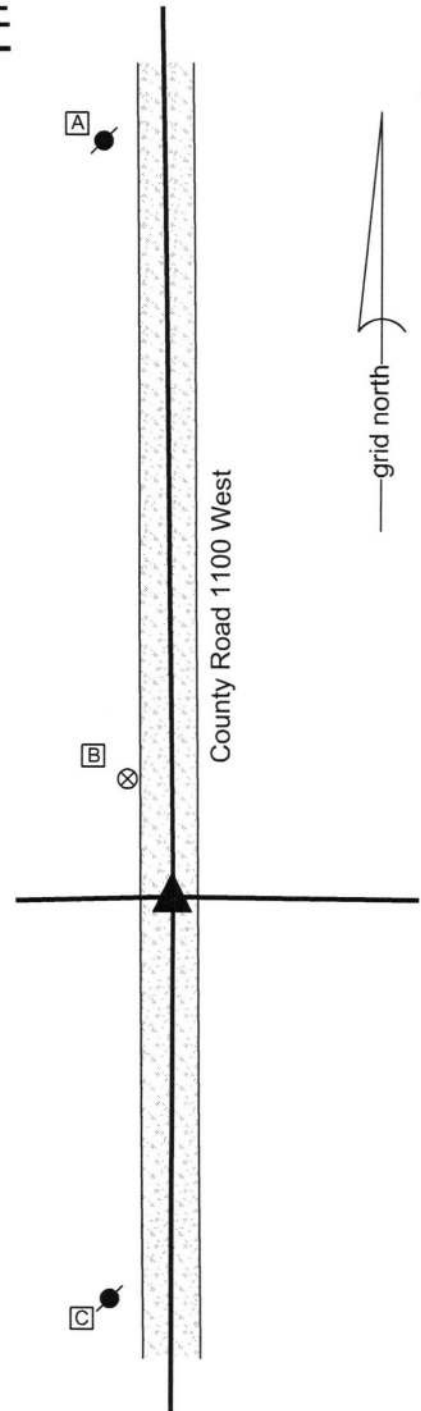
C - Mag nail set in N. side power pole, 2' a.g., 104.0'

Boone County witness mark is a 3/8" diameter x 2' long rebar bearing a metal cap stamped "Boone County Witness Point."

The Harrison monument was set in place of a stone found. No specific descriptions of this corner were found in the BCS Surveyor's Record. However, several entries were found which reference this corner as the terminal point for measurements. Prior to excavation, no metal or other artificial monuments were found marking the ostensible location of the corner, nor was local evidence found indicating the likely position of the corner in the north-south dimension. The existing roadway of County Road 1100 West did provide evidence of the east-west position of the corner. A probable position was estimated for the corner with respect to measurements from records of 1867 and 1916 and with respect to the relative positions of the stones found marking the adjacent corners to the north and south. The 1867 measurements were scaled to match known variations of reported measurements from that specific era versus modern field measurements. The 1916 measurements were not scaled, as measurements from that era have been found to match modern field measurements. The calculated, probable position had minimal uncertainty in the north-south dimension.

The corner was excavated on June 21, 2016. Excavation yielded a stone found at 3 inches deep in the gravel road within one foot of the estimated position. The stone was removed, measured, and found to have been 22 inches tall by 14 inches E-W by 18 inches N-S. As found, the stone was embedded in the clay layer below the road, protruding approximately 5 inches into the bottom of the road bed. The stone was approximately vertical. No specific marks were observed on the stone. The top of the stone was approximately 10 inches E-W by 8 inches N-S. The top center of the stone, as originally found, was held as the position of the corner and a Harrison monument was set in that position.

This corner was originally established as a wood post in 1829.




Kenneth E. Hedge, County Surveyor


James S. Swift, IN LS 20200054

March 23, 2017

Sugar Creek Township

Section 19 T20N, R2W	Section 20 T20N, R2W
-------------------------	-------------------------

PHOTOGRAPHIC DOCUMENTATION

Date of photography: June 21, 2016

The stone as it was originally exposed.



The stone more fully exposed.



The stone as it is being removed from the road bed.



For details and documentation, refer to related sheet "Section Corner Record."

SECTION CORNER RECORD

BOONE COUNTY SURVEYOR'S OFFICE

NW 900-1100

State Plane grid coordinates NAD83 (2011):

North: 1793486.98 East: 3066498.97 (U.S. survey feet)

Type of monument: Harrison, 4" disk 'Section Corner'

Depth: Six inches below adjacent gravel road surface

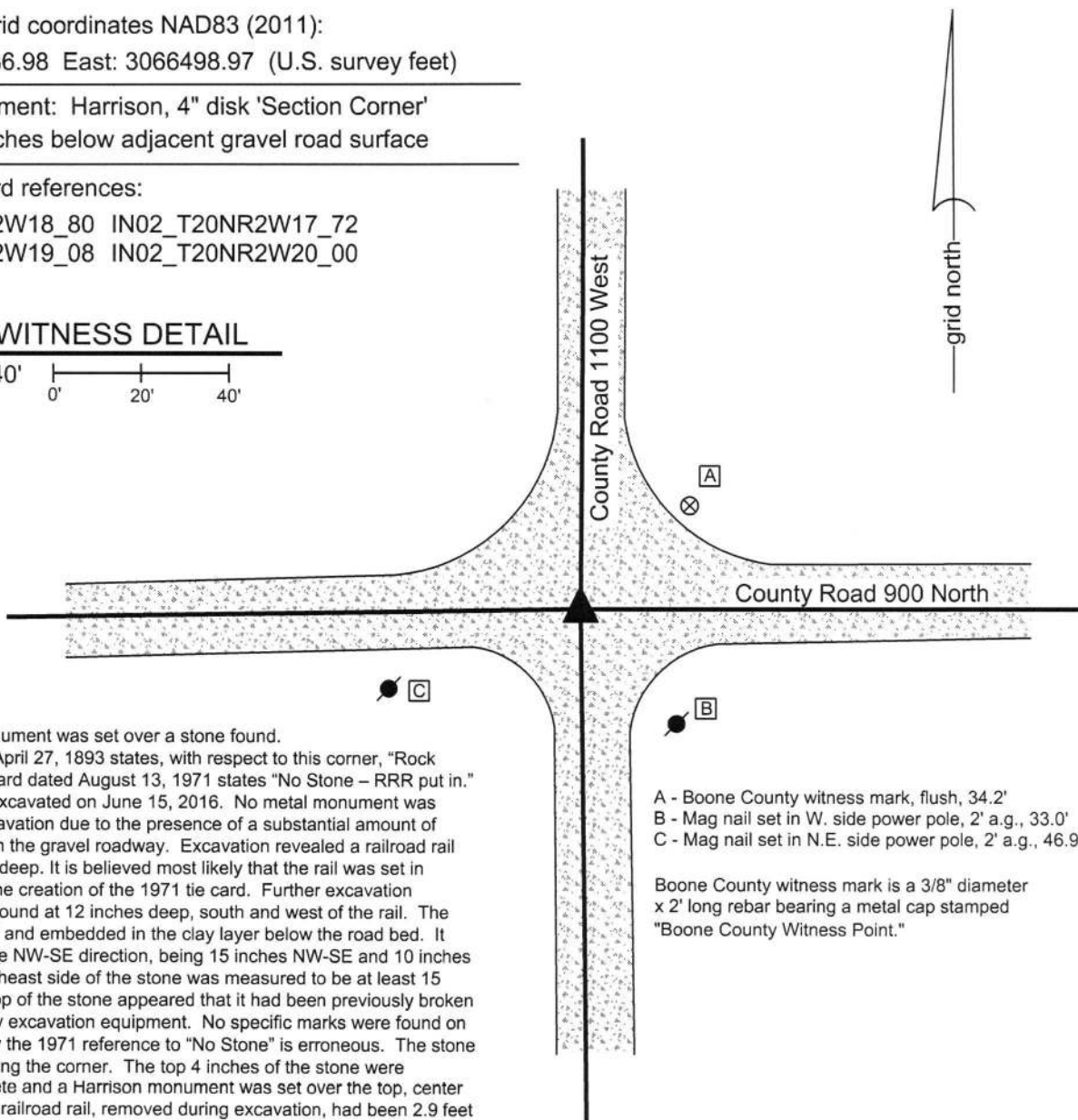
Indiana tie card references:

IN02_T20NR2W18_80 IN02_T20NR2W17_72

IN02_T20NR2W19_08 IN02_T20NR2W20_00

CORNER WITNESS DETAIL

SCALE 1" = 40'

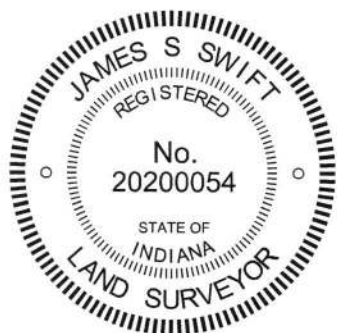


The Harrison monument was set over a stone found. A BCS record of April 27, 1893 states, with respect to this corner, "Rock Set." A BCS tie card dated August 13, 1971 states "No Stone - RRR put in." This corner was excavated on June 15, 2016. No metal monument was found prior to excavation due to the presence of a substantial amount of metallic material in the gravel roadway. Excavation revealed a railroad rail found at 7 inches deep. It is believed most likely that the rail was set in association with the creation of the 1971 tie card. Further excavation revealed a stone found at 12 inches deep, south and west of the rail. The stone was vertical and embedded in the clay layer below the road bed. It was oriented in the NW-SE direction, being 15 inches NW-SE and 10 inches NE-SW. The northeast side of the stone was measured to be at least 15 inches tall. The top of the stone appeared that it had been previously broken off, presumably by excavation equipment. No specific marks were found on the stone. Clearly the 1971 reference to "No Stone" is erroneous. The stone was held as marking the corner. The top 4 inches of the stone were encased in concrete and a Harrison monument was set over the top, center of the stone. The railroad rail, removed during excavation, had been 2.9 feet east and 0.9 foot north of the stone.

This corner was originally established as a wood post in 1829.

- A - Boone County witness mark, flush, 34.2'
- B - Mag nail set in W. side power pole, 2' a.g., 33.0'
- C - Mag nail set in N.E. side power pole, 2' a.g., 46.9'

Boone County witness mark is a 3/8" diameter x 2' long rebar bearing a metal cap stamped "Boone County Witness Point."



Kenneth E. Hedge
 Kenneth E. Hedge, County Surveyor

James S. Swift
 James S. Swift, IN LS 20200054
 March 23, 2017

Sugar Creek Township

Section 18 T20N, R2W	Section 17 T20N, R2W
Section 19 T20N, R2W	Section 20 T20N, R2W

PHOTOGRAPHIC DOCUMENTATION

Date of photography: June 15, 2016

The stone partially exposed, view from above and north.



The stone partially exposed, view from above.



View from east, looking across the stone and west along County Road 900 North.



View from north, looking across the stone and south along County Road 1100 West.



For details and documentation, refer to related sheet "Section Corner Record."

SECTION CORNER RECORD

NW 900-1150

BOONE COUNTY SURVEYOR'S OFFICE

State Plane grid coordinates NAD83 (2011):

North: 1793448.08 East: 3063823.14 (U.S. survey feet)

Type of monument: Harrison, 4" disk 'Section Corner'

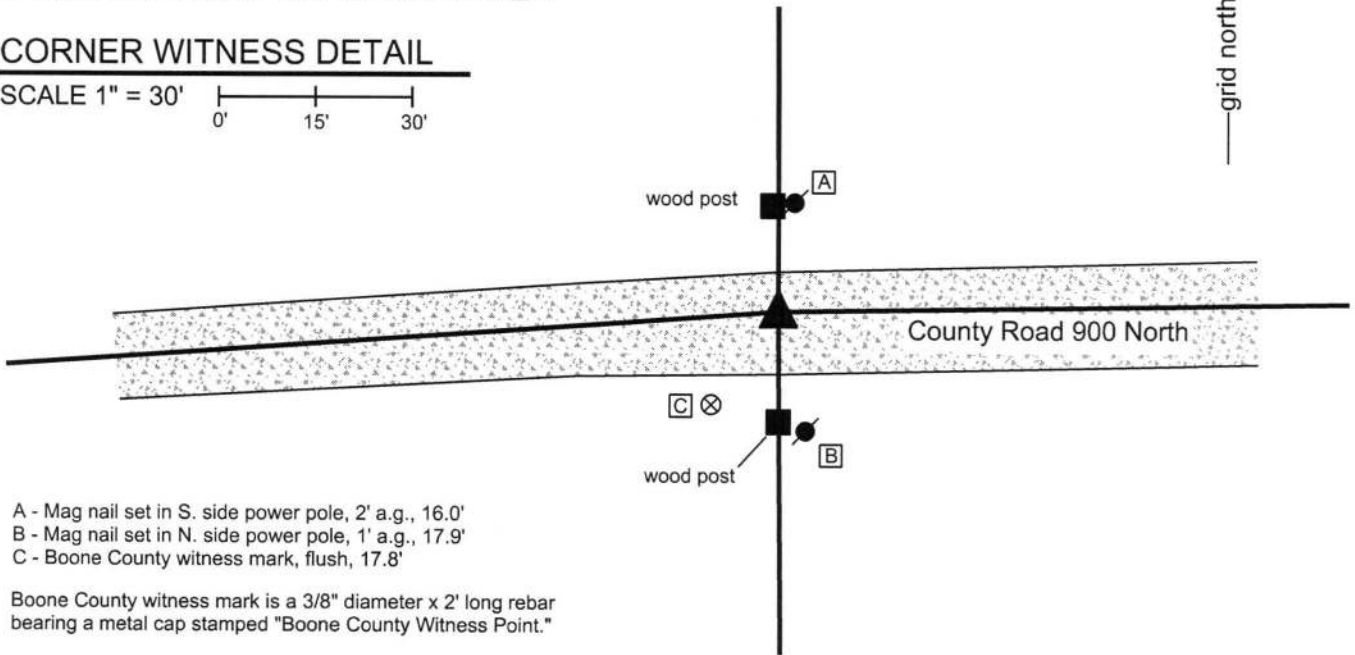
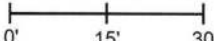
Depth: Six inches below adjacent gravel road surface

Indiana tie card references:

IN02_T20NR2W18_76 IN02_T20NR2W19_04

CORNER WITNESS DETAIL

SCALE 1" = 30'



- A - Mag nail set in S. side power pole, 2' a.g., 16.0'
- B - Mag nail set in N. side power pole, 1' a.g., 17.9'
- C - Boone County witness mark, flush, 17.8'

Boone County witness mark is a 3/8" diameter x 2' long rebar bearing a metal cap stamped "Boone County Witness Point."

The Harrison monument was set in place of a stone found.

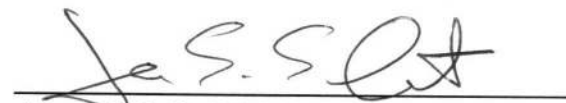
A BCS record dated August 29, 1888 states, with respect to this corner, "Reestablished by measure and intersection. Set large rock marked +..." A subsequent BCS record, dated August 20, 1894 states "Found Rock for Old Corner. Rock set by Warren N12E, 17 [lks]." The reference to Warren in the 1894 record refers to the 1888 record. No recent BCS tie cards were found referencing this corner.

This corner was excavated on July 11, 2016. Prior to excavation, a railroad spike was found at 6 inches deep in the approximate center of the gravel road, situated between wood corner posts on the north and south sides of the road. Prior to excavation, significant analysis was performed with respect to the relative positions of the subject and adjoining corners and with respect to the distances reported on the 1888 and 1894 records. Excavation centered on the aforementioned railroad spike revealed a stone found at 10 inches deep. The stone was 18 inches tall by 11 inches N-S by 12 inches E-W. An etched mark was vaguely visible on the top of the stone. Given the uncertainties with respect to the previous records, further excavation was performed after finding the stone in order to determine whether the found stone represents the monument referred to in the 1888 or 1894 records. Excavation of areas 3 feet N-S by 4 feet E-W at points South 12 degrees West and North 12 degrees East, respectively, of the found stone yielded no further evidence of the corner. Based on the available evidence and records, it is believed most likely that the found stone represents the monument associated with the 1894 record. The position of the found stone was held as marking the corner. The stone was removed and a Harrison monument was set in place of the top, high point of the stone. The railroad spike, removed during excavation, had been near the southwest edge of the stone, specifically 0.3 foot west and 0.5 foot south of the point held as the corner.

This corner was originally established as a wood post in 1829. It is noted that the roadway and section lines bend significantly at this point. This irregularity in the east-west section line is due to the presence of the west line of the Thorntown Indian Reserve approximately 1924 feet to the west.




Kenneth E. Hedge, County Surveyor


James S. Swift, IN LS 20200054

March 23, 2017

Sugar Creek Township

Section 18
T20N, R2W



Section 19
T20N, R2W

PHOTOGRAPHIC DOCUMENTATION

Date of photography: July 11, 2016

The stone as it was originally exposed.



The stone more fully exposed.



View from NNE, showing the three areas of excavation (see Section Corner Record).



View from north, looking across the stone toward the post on the south side of C.R. 900 North



For details and documentation, refer to related sheet "Section Corner Record."

SECTION CORNER RECORD

NW 900-1200

BOONE COUNTY SURVEYOR'S OFFICE

State Plane grid coordinates NAD83 (2011):

North: 1793335.55 East: 3061055.84 (U.S. survey feet)

Type of monument: Harrison, 4" disk 'Section Corner'

Depth: four inches below adjacent road surface

Indiana tie card references:

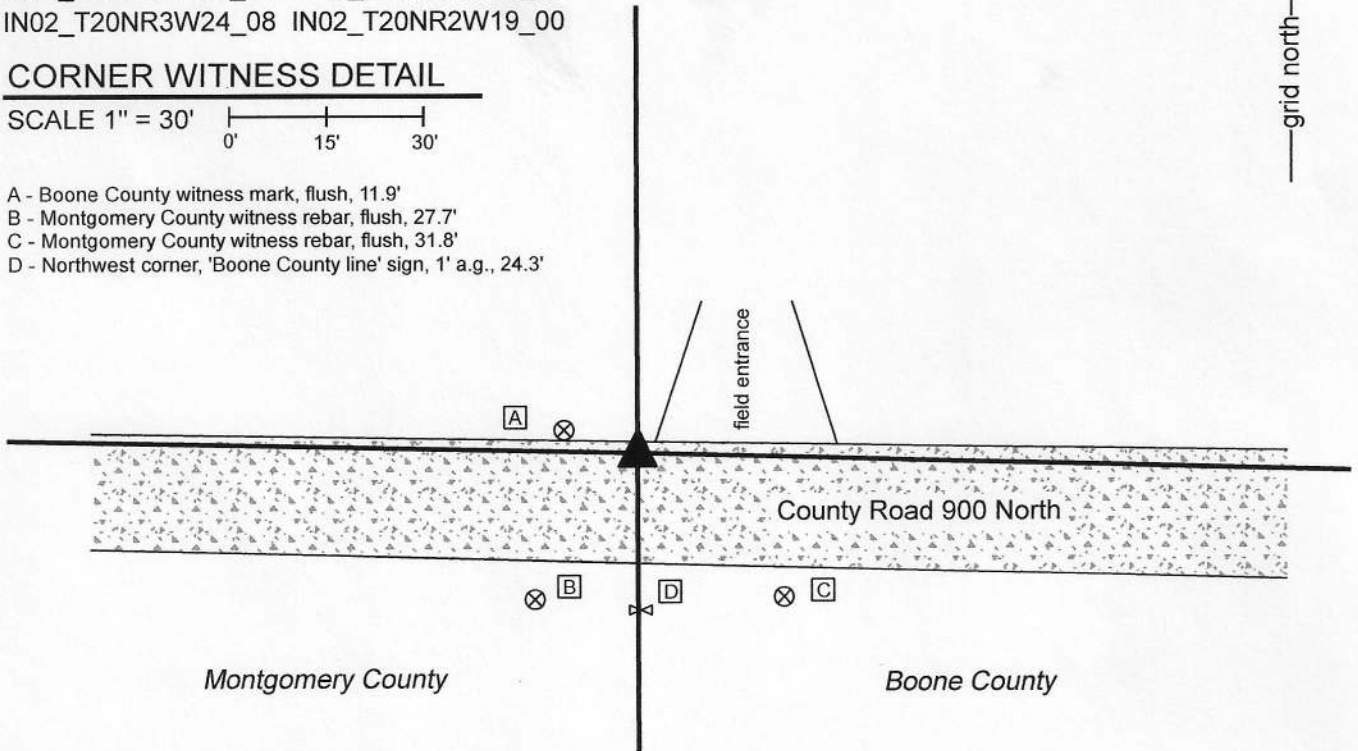
IN02_T20NR3W13_80 IN02_T20NR2W18_72

IN02_T20NR3W24_08 IN02_T20NR2W19_00

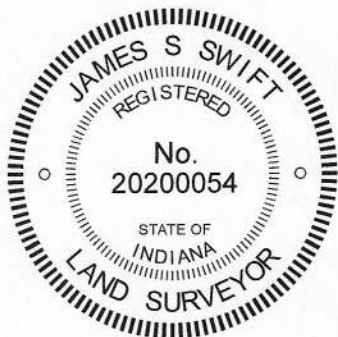
CORNER WITNESS DETAIL

SCALE 1" = 30'

- A - Boone County witness mark, flush, 11.9'
- B - Montgomery County witness rebar, flush, 27.7'
- C - Montgomery County witness rebar, flush, 31.8'
- D - Northwest corner, 'Boone County line' sign, 1' a.g., 24.3'



The Harrison monument was set in place of a disturbed rebar found, per distance ties provided by the Montgomery County Surveyor's Office. No specific description of this corner was found in the BCS Surveyor's Record beyond the original establishment of the corner as a wood post in 1819. The corner was established by the Montgomery County Surveyor's Office in 2010 as a rebar set in place of a found railroad spike, per section corner dossier dated July 3, 2010. The rebar called for by said dossier was found at the north edge of the road, at the surface of the road, bent substantially with no cap. The precise position of the corner as called by Montgomery County was established per the position of the vertical shaft of the rebar, found below the bend in the rebar, and per 2 rebars with plastic caps shown the dossier as distance references. The vertical shaft of the rebar fit well with the distance ties to the rebars. As no stone was found at this corner during excavation in 2010, additional excavation was performed by the Boone County Surveyor's Office on March 25, 2020. Excavation of an area extending 2 feet north, 8 feet south, 4.5 feet east and 3.5 feet west of the rebar revealed no further evidence of the corner. Excavation was performed to below the bottom of the road bed, approximately 18 inches deep. The corner as established by Montgomery County was held and a Harrison monument was set in place of the vertical shaft of the bent rebar, in agreement with the aforementioned witness ties. It is noted that, though this corner falls on a range line, this is a common corner for the sections in Ranges 2 and 3 West, due to the presence of the west line of the Thorntown Reserve to the east. In 1822 the federal surveyors held the standard corner set in 1819 and surveyed east to the reserve line from that corner, causing this corner to be a single corner with no range line offset.



Kenneth E. Hedge
 Kenneth E. Hedge, County Surveyor

James S. Swift
 James S. Swift, IN LS 20200054
 April 15, 2020

Sugar Creek Township Montgomery County	Sugar Creek Township Boone County
Section 13 T20N, R3W	Section 18 T20N, R2W
Section 24 T20N, R3W	Section 19 T20N, R2W

SECTION CORNER RECORD NW 900-1200RSV

BOONE COUNTY SURVEYOR'S OFFICE

West line of the
Thorntown Reserve

State Plane grid coordinates NAD83 (2011):
North: 1793313.34 East: 3061901.33 (U.S. survey feet)

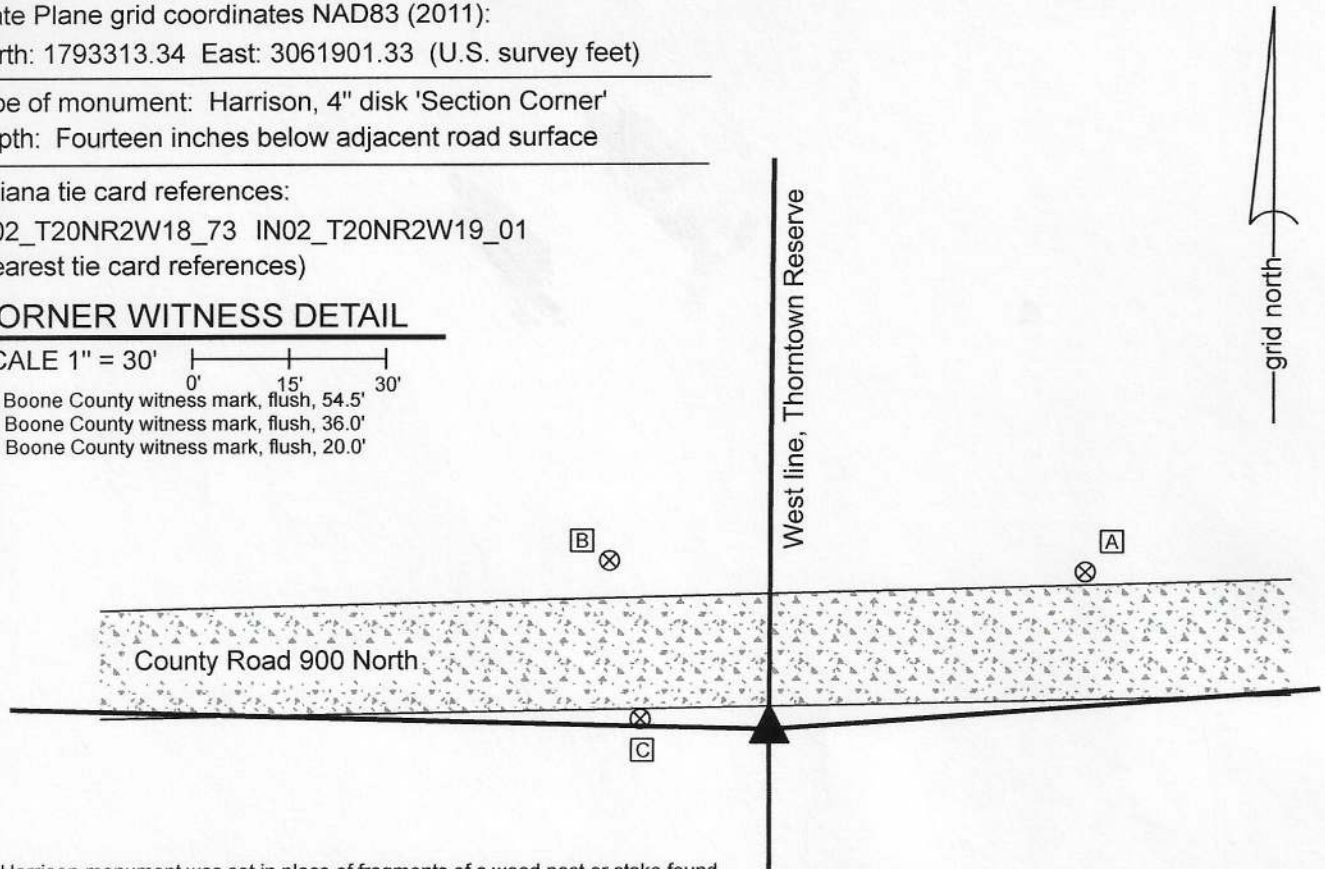
Type of monument: Harrison, 4" disk 'Section Corner'
Depth: Fourteen inches below adjacent road surface

Indiana tie card references:
IN02_T20NR2W18_73 IN02_T20NR2W19_01
(Nearest tie card references)

CORNER WITNESS DETAIL

SCALE 1" = 30'

- A - Boone County witness mark, flush, 54.5'
- B - Boone County witness mark, flush, 36.0'
- C - Boone County County witness mark, flush, 20.0'



The Harrison monument was set in place of fragments of a wood post or stake found. This corner is on the west line of the Thorntown Reserve, a reserve held out from the Treaty of St. Mary's in 1818. The perimeter of the reserve and adjacent sections outside the reserve were surveyed by Thomas Brown and crew in 1822. The interior of the reserve was surveyed by John Hendricks and crew in 1829. No specific descriptions of this corner were found in the BCS Surveyor's Record beyond the original establishment of the corner as a wood post in 1822 and the closing onto that corner in 1829. It is noted that in 1829, the random line surveyed west to the reserve line intersected the west line of the reserve 290 links north of the post. The line was corrected in a straight line from the post, which accounts, in part, for the substantial bend which occurs in the section line at the reserve line. See also BCS corner NW 900-1150 for more information about the line between sections 18 and 19. Neither recent BCS tie cards nor recorded surveys were found referencing this corner.

This corner was excavated on March 25, 2020. Prior to excavation, an estimated position was computed for the corner, being 12.79 chains (original federal distance reported in 1822) easterly from the southwest corner of section 18 (see BCS Corner NW 900-1200) and on the westerly prolongation of a line connecting said BCS Corner NW 900-1150 with a railroad spike found in the center of County Road 1100 North, 1334 feet west of corner NW 900-1150. This computed position falls slightly south of the physical roadway, but fits reasonably well with the center of the road to the east and west. It is noted that the roadway appears to generally fall along the section line, but smooths out the substantial bend in the vicinity of the reserve line. No physical evidence of the north-south treaty line was observed prior to excavation, though as noted, the existing roads agree with the expected bend in the section line. Excavation at the computed position for the corner revealed fragments of a wood post or stake found approximately 1.5 feet east of the computed position. The fragments of stake were found from 9 to 12 inches deep in the ground, adjacent to the road. The fragments definitely appeared to be those of a former stake or post and appeared to be in a vertical orientation. No stone or other solid monuments were found. The fragments of post or stake were accepted as the best available evidence of the corner. It is noted that this evidence fit remarkably well with the available evidence in the form of the existing roadways and distances recorded by the original federal surveyors, both from 1822 and 1829. It also fit reasonably well with the distance called from the southwest corner of section 18 in the deed for the adjoining land to the north, per Instrument 2008008515, Boone County Recorders Office. The fragments of stake or post were replaced with a Harrison monument with cap stamped 'Treaty Line' on March 25, 2020. The monument was set at 14 inches below grade, as it is proximate to the plow line for the tilled field on the south side of County Road 1100 North.



Kenneth E. Hedge
Kenneth E. Hedge, County Surveyor

James S. Swift
James S. Swift, IN LS 20200054
April 15, 2020

Sugar Creek Township

Section 18
T20N, R2W

Section 19
T20N, R2W

