

SECTION CORNER RECORD

NW 200-1100

BOONE COUNTY SURVEYOR'S OFFICE

State Plane grid coordinates NAD83 (2011):
North: 1756190.09 East: 3066637.85 (U.S. survey feet)

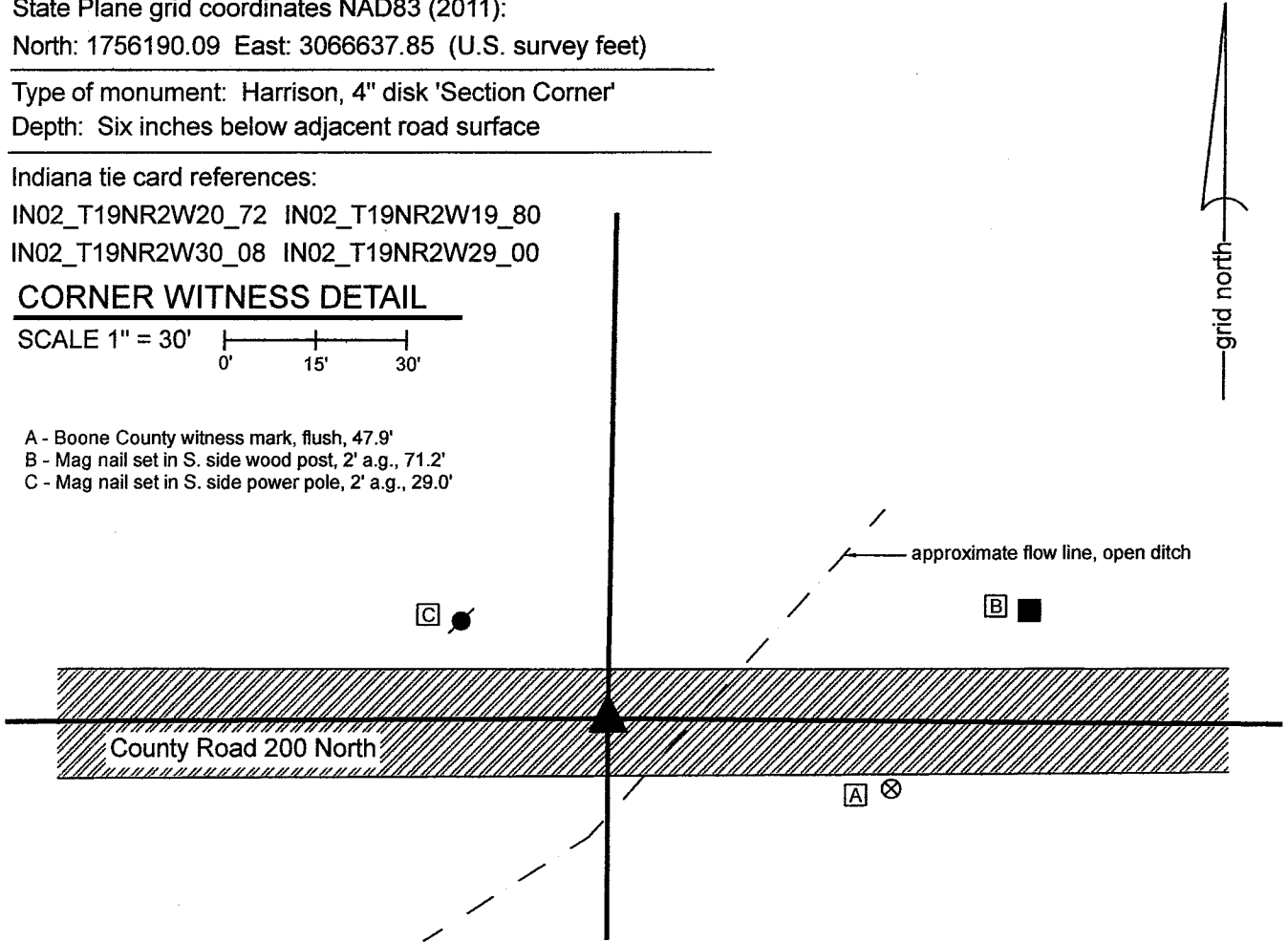
Type of monument: Harrison, 4" disk 'Section Corner'
Depth: Six inches below adjacent road surface

Indiana tie card references:
IN02_T19NR2W20_72 IN02_T19NR2W19_80
IN02_T19NR2W30_08 IN02_T19NR2W29_00

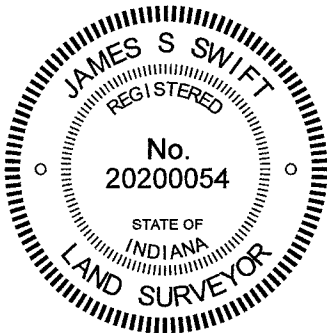
CORNER WITNESS DETAIL

SCALE 1" = 30'
0' 15' 30'

- A - Boone County witness mark, flush, 47.9'
- B - Mag nail set in S. side wood post, 2' a.g., 71.2'
- C - Mag nail set in S. side power pole, 2' a.g., 29.0'



The Harrison monument was set in place of a rebar found.
No specific descriptions of this corner were found in the BCS Surveyor's Record beyond the original establishment of the corner as a wood post in 1829. No recent BCS tie cards were found referencing this corner.
Excavation was performed at this corner on October 26, 2021. Prior to excavation, a 5/8-inch diameter rebar was found at 3 inches below grade, in the approximate center of the east-west county road, at the northerly prolongation of an old north-south fence which terminates on the south side of the open ditch which crosses under the road immediately east of the corner. Due to the presence of the ditch and a large metal culvert so close to the corner, exploratory excavation was not performed at this corner, as there appears to be minimal chance of an old monument such as a corner stone being present and having survived previous excavations associated with the open ditch and culvert. An area 30 inches wide N-S by 4 feet long E-W was excavated to 2 feet deep. This depth is below the general grade of the adjacent land but only fill material was observed in this area of excavation, indicating, as expected, that the immediate vicinity of the corner has been previously disturbed.
The position of the rebar fit well with the relative positions of other, proximate corners and fit well with local evidence of the corner, being in the center of the east-west road and in-line with the standing fence south of the ditch.
The rebar was accepted as providing the best available evidence of the corner and was held as marking the corner. The rebar was removed during excavation and replaced with a Harrison monument in the same position on October 26, 2021.



Kenneth E. Hedge
Kenneth E. Hedge, County Surveyor

James S. Swift
James S. Swift, IN LS 20200054
November 1, 2021

Jefferson Township

Section 19 T19N, R2W	Section 20 T19N, R2W
Section 30 T19N, R2W	Section 29 T19N, R2W

An arrow points to the center of the four-section grid.

SECTION CORNER RECORD

NW 200-1200

BOONE COUNTY SURVEYOR'S OFFICE

State Plane grid coordinates NAD83 (2011):

North: 1756171.73 East: 3061223.59 (U.S. survey feet)

Type of monument: 5/8" rebar with aluminum cap stamped
'Montgomery County Surveyor'

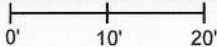
Depth: 12 inches below surrounding ground

Indiana tie card references:

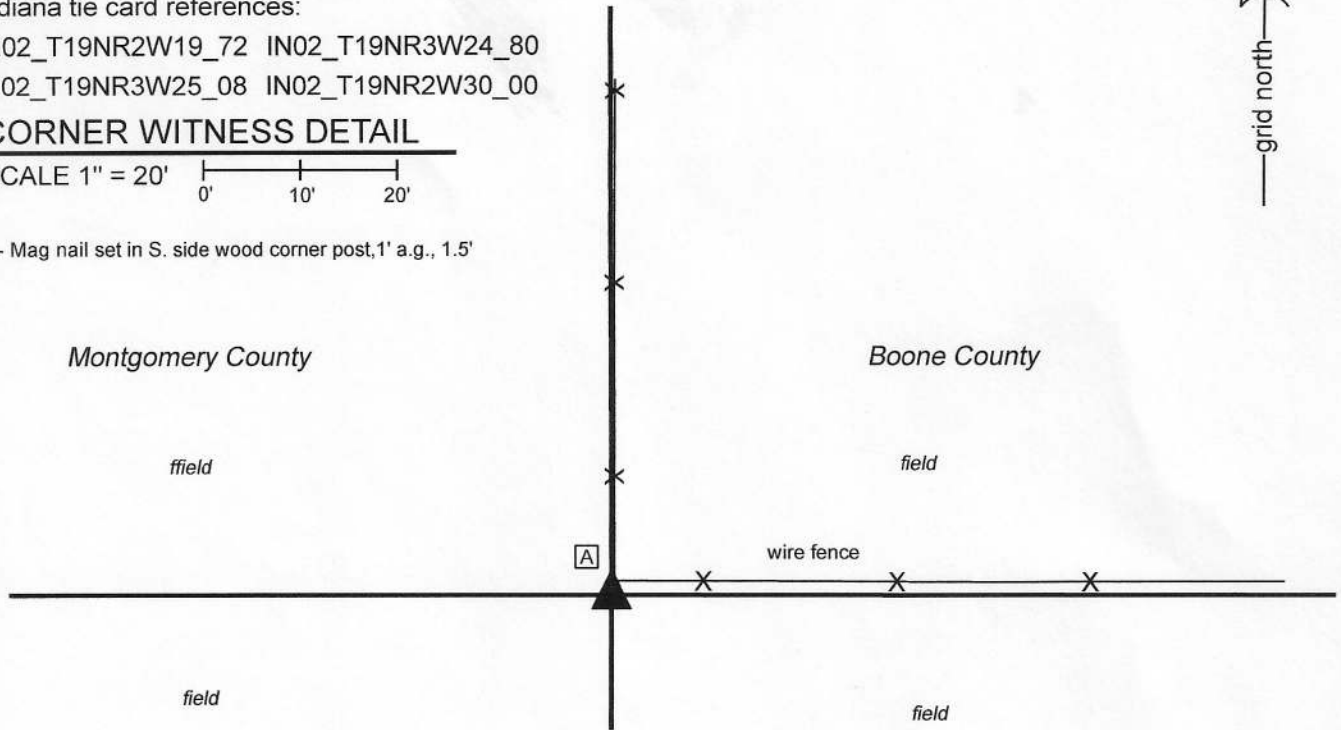
IN02_T19NR2W19_72 IN02_T19NR3W24_80

IN02_T19NR3W25_08 IN02_T19NR2W30_00

CORNER WITNESS DETAIL

SCALE 1" = 20' 

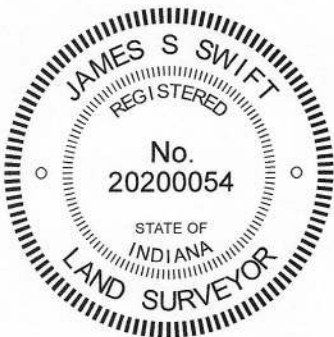
A - Mag nail set in S. side wood corner post, 1' a.g., 1.5'



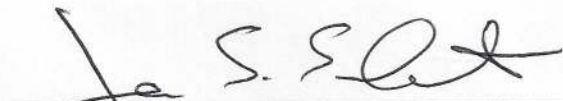
The rebar with Montgomery County Surveyor cap was found in place and held as marking the corner.

A BCS record dated April 27, 1869 states, with respect to this corner, "Reestablished from stumps of both trees. Set rock 12, 15 marked +."

No recent BCS tie cards were found referencing this corner. A Section Corner Dossier dated March 23, 2016, provided by the Montgomery County Surveyor, shows the corner as a 5/8 inch rebar with metal cap set in place of a stone. The dossier notes that the stone was found 0.8 foot below grade, 1.7 feet south of the center of a 7 inch square wood corner post with old fence line running north and east. The dossier states that the stone is of the same size as referenced by Boone County Surveyor D.M. Burns in a record of July 23, 1873. It is observed that the entry in the BCS Surveyor's Record which references a stone set at this corner is dated April 27, 1869 and is directly above a set of entries dated July 23, 1873. The Montgomery County monument was found on March 20, 2020 and was held, accepted as being in place of the stone set by the Boone County Surveyor in 1869. The monument is sufficiently far from the edge of the post that it is in a tilled area. A surface monument may be damaged or destroyed at this position. The rebar was found at 12 inches below grade, evidently below that which would be tilled in the vicinity of the post. The Montgomery County rebar was left in place, as found. It is noted that this corner, though on a range line, is a common corner for the sections in Ranges 2 and 3 West, due to the presence of the west line of the Thorntown Reserve slightly to the east and the fact that the original federal surveyors in 1822 held the standard corners at the section corners and surveyed east therefrom to the west line of the reserve. The corner was originally established in 1819 and held in 1822.




 Kenneth E. Hedge, County Surveyor


 James S. Swift, IN LS 20200054
 May 27, 2020

Franklin Township
 Montgomery County

Jefferson Township
 Boone County

Section 24 T19N, R3W	Section 19 T19N, R2W
Section 25 T19N, R3W	Section 30 T19N, R2W

SECTION CORNER RECORD

BOONE COUNTY SURVEYOR'S OFFICE

NW 250-1100

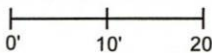
State Plane grid coordinates NAD83 (2011):
North: 1758855.15 East: 3066666.19 (U.S. survey feet)

Type of monument: Harrison, 4" disk 'Section Corner'
Depth: One inch below adjacent ground

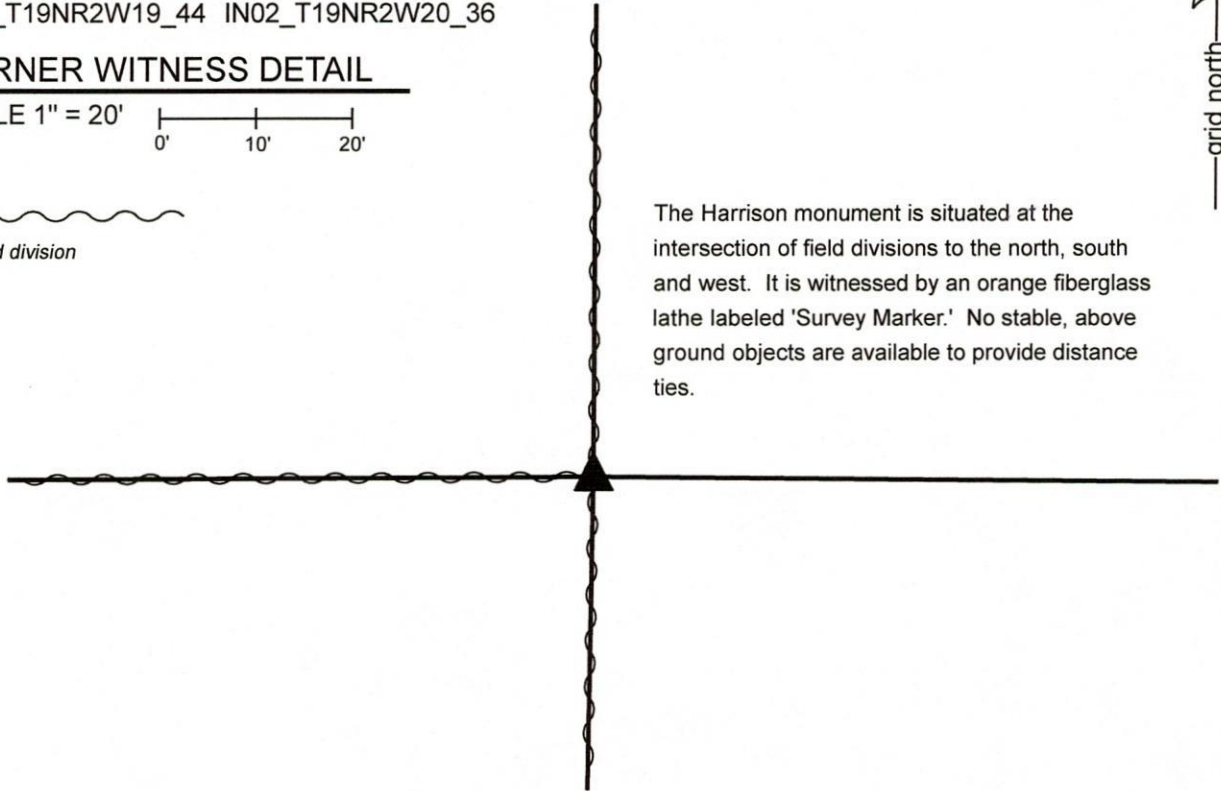
Indiana tie card references:
IN02_T19NR2W19_44 IN02_T19NR2W20_36

CORNER WITNESS DETAIL

SCALE 1" = 20'

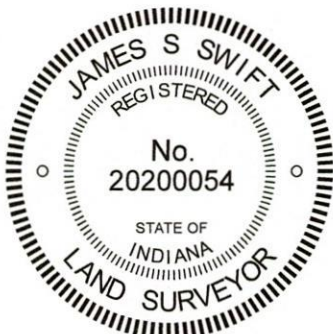



- field division




The Harrison monument is situated at the intersection of field divisions to the north, south and west. It is witnessed by an orange fiberglass lathe labeled 'Survey Marker.' No stable, above ground objects are available to provide distance ties.

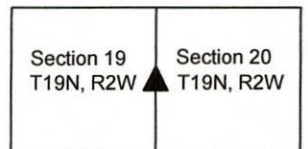
The Harrison monument was set in place of a 5/8 inch diameter rebar and over the base of a wood post. No specific descriptions of this corner were found in the BCS Surveyor's Record beyond the original establishment of the corner as a wood post in 1829. Neither recent BCS tie cards nor recorded surveys were found referencing this corner. Excavation was performed at this corner on March 13 & 16, 2020. Prior to excavation, a 5/8 inch diameter rebar with no cap was found at the apparent position of the corner at the intersection of field divisions to the north, south and west. The position of the rebar fit well with the relative positions of wood corner posts found 1/2 mile and 1/4 mile east, respectively. Several stones were found in the vicinity of the corner, none of which appeared to represent stones purposely set to mark the corner. All were haphazard in their orientation. Excavation revealed that the rebar was driven into the remnant base of an old wood post. The rebar was leaning slightly toward the north. The bottom of the rebar was firmly driven into the post. The rebar and remnants of the post were accepted as the best available evidence of the corner and held as marking the corner. The specific position of the corner was established per the post and bottom of the rebar. This position was slightly south of the position of the top of the rebar as originally found.




Kenneth E. Hedge, County Surveyor


James S. Swift, IN LS 20200054
March 23, 2020

Jefferson Township



SECTION CORNER RECORD

NW 250-1200

BOONE COUNTY SURVEYOR'S OFFICE

State Plane grid coordinates NAD83 (2011):

North: 1758822.61 East: 3061211.50 (U.S. survey feet)

Type of monument: Harrison, 4" disk 'Section Corner'

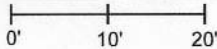
Depth: 2 inches above surrounding ground

Indiana tie card references:

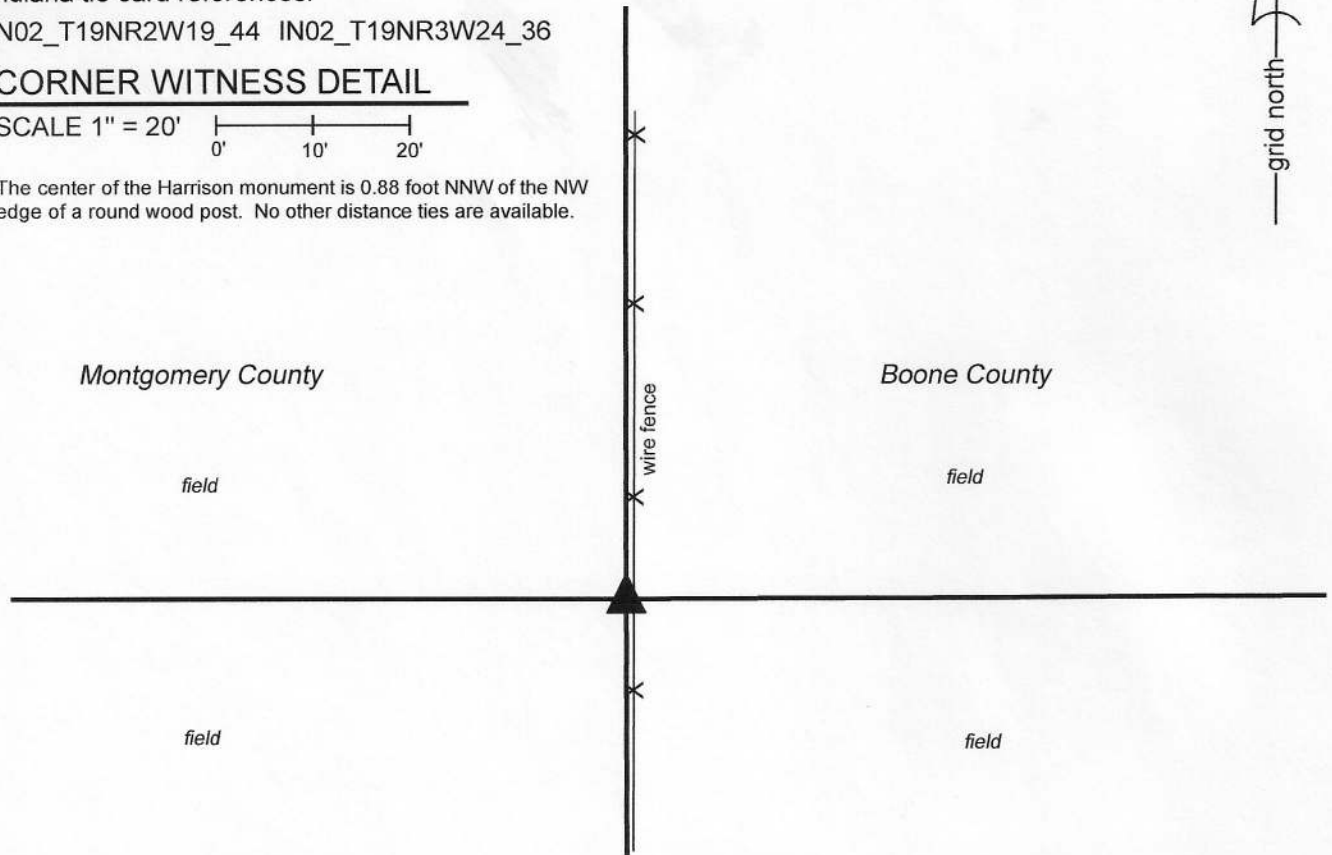
IN02_T19NR2W19_44 IN02_T19NR3W24_36

CORNER WITNESS DETAIL

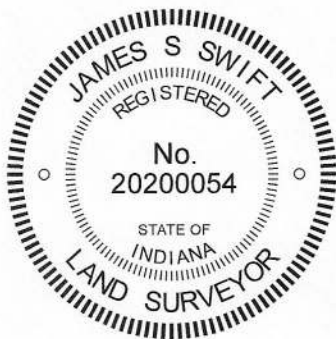
SCALE 1" = 20'



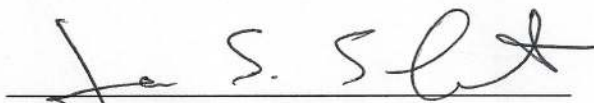
The center of the Harrison monument is 0.88 foot NNW of the NW edge of a round wood post. No other distance ties are available.



The Harrison monument was set directly over a 5/8 inch rebar bearing a metal cap stamped 'Montgomery County Surveyor.' A BCS record of July 23, 1873 states, with respect to this corner, "Reestablished from NE Beech. Set a Rock 13,7,6 +." No recent BCS tie cards were found referencing this corner. A Section Corner Dossier dated March 23, 2016, provided by the Montgomery County Surveyor's Office, shows the corner as being a 5/8 inch rebar with metal cap set in place of the stone described in the 1873 BCS record. The rebar was found on March 20, 2020 at 11 inches below grade, as described in the dossier. Above the rebar was a stone, flush with the ground, being 9 inches tall by 5 inches by 6 inches. The top, center of the stone was found to be 0.2 foot west of the top of the rebar. It is not known why the stone was above the rebar. The Montgomery County monument was held, accepted as being in place of the stone described in the 1873 BCS record. The stone above the rebar was removed, the rebar driven deeper into the ground and a Harrison monument was set directly above the rebar. It is noted that this corner, though on a range line, is a common corner for the sections in Ranges 2 and 3 West, due to the presence of the west line of the Thorntown Reserve slightly to the east and the fact that the original federal surveyors in 1822 held the standard corners at the section corners and surveyed east therefrom to the west line of the reserve. The corner was originally established in 1819 as the quarter corner for the section to the west. This corner is not technically an original corner for the section to the east (Boone County).




Kenneth E. Hedge, County Surveyor


James S. Swift, IN LS 20200054
May 27, 2020

Franklin Township
Montgomery County

Jefferson Township
Boone County

Section 24 T19N, R3W	Section 19 T19N, R2W
-------------------------	-------------------------

SECTION CORNER RECORD

NW 300-1000

BOONE COUNTY SURVEYOR'S OFFICE

State Plane grid coordinates NAD83 (2011):

North: 1761447.50 East: 3071971.92 (U.S. survey feet)

Type of monument: Harrison, 4" disk 'Section Corner'

Depth: three inches above adjacent ground

Indiana tie card references:

IN02_T19NR2W16_72 IN02_T19NR2W17_80

IN02_T19NR2W20_08 IN02_T19NR2W21_00

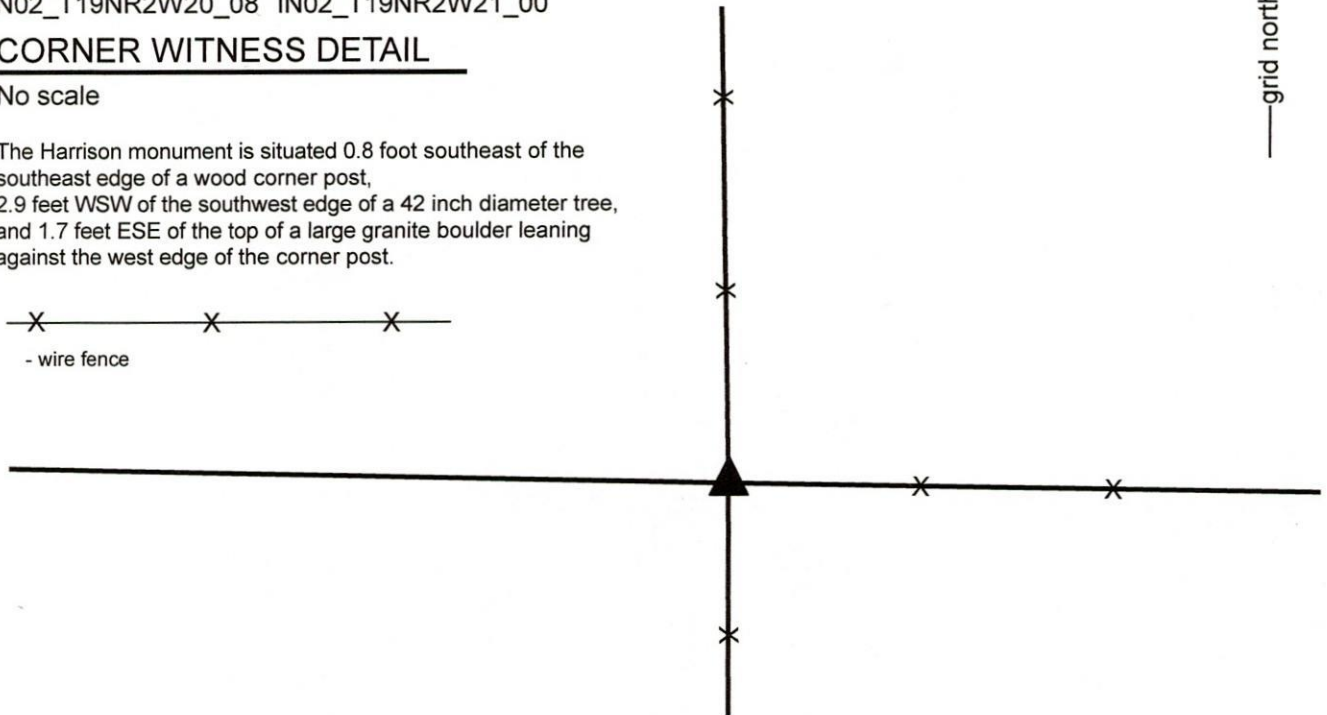
CORNER WITNESS DETAIL

No scale

The Harrison monument is situated 0.8 foot southeast of the southeast edge of a wood corner post, 2.9 feet WSW of the southwest edge of a 42 inch diameter tree, and 1.7 feet ESE of the top of a large granite boulder leaning against the west edge of the corner post.



- wire fence

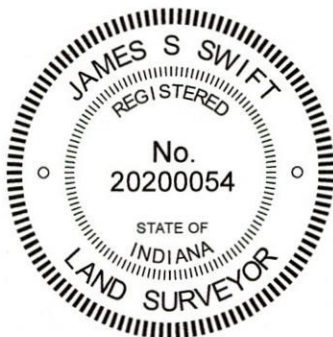


The Harrison monument was set over a stone found.

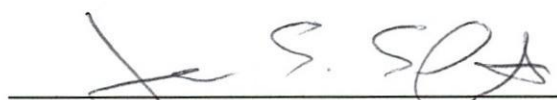
A BCS record of April 12, 1912 states, with respect to this corner, "Set Rock 12x16x9 +." No recent BCS tie cards were found referencing this corner. A survey recorded in Survey Book 19, page 91 in the Office of the Boone County Recorder shows the corner as a stone found.

This corner was excavated on March 13 & 17, 2020. Prior to excavation, a wood corner post at the intersection of standing fences to the north, south and east was found. A large granite boulder was found leaning against the west side of the post. Excavation revealed the stone described in the 1912 record at 10 inches below grade near the southeast edge of the post. The stone measured 12 inches N-S by 9 inches E-W by 17 inches tall, as measured on the southwest edge. A distinct etched + mark was visible on the top, center of the stone. This stone was vertical, oriented in cardinal directions and was separated by several inches from the post, hence it did not appear to be bracing the post. The stone was accepted as being the same monument described in the 1912 record and was held as marking the corner. The stone was left in place, the top 8 inches of the stone were encased in concrete and a Harrison monument was set directly over the etched mark on the top, center of the stone. It is believed that the stone called in the aforementioned survey is the large granite boulder found leaning against the west edge of the post.

This corner was originally established as a wood post in 1829.




Kenneth E. Hedge, County Surveyor


James S. Swift, IN LS 20200054
March 23, 2020

Jefferson Township

Section 17 T19N, R2W	Section 16 T19N, R2W
Section 20 T19N, R2W	Section 21 T19N, R2W

SECTION CORNER RECORD

BOONE COUNTY SURVEYOR'S OFFICE

NW-300-1100

State Plane grid coordinates NAD83 (2011):
 North: 1761507.24 East: 3066665.22 (U.S. survey feet)

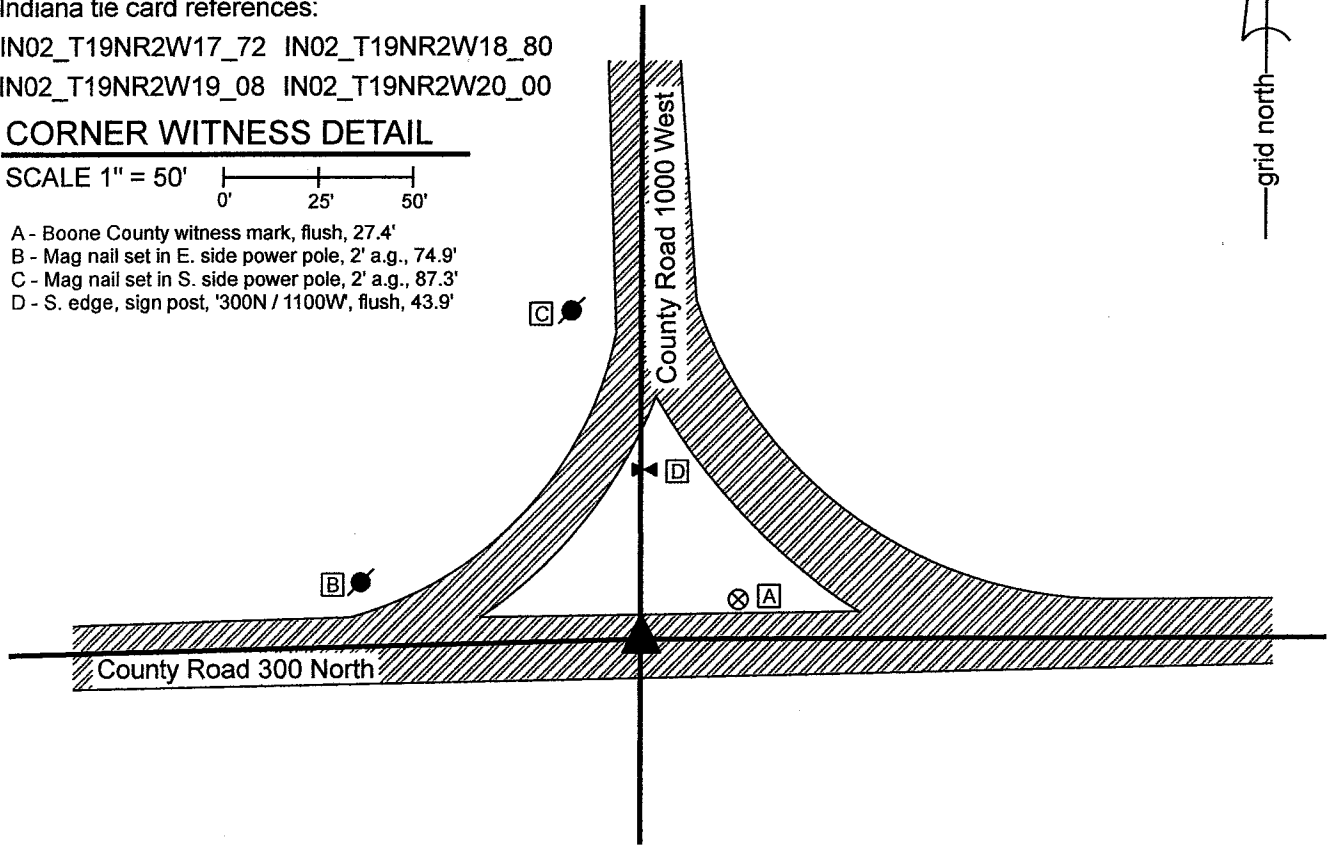
Type of monument: Harrison, 4" disk 'Section Corner'
 Depth: One inch below adjacent road surface

Indiana tie card references:
 IN02_T19NR2W17_72 IN02_T19NR2W18_80
 IN02_T19NR2W19_08 IN02_T19NR2W20_00

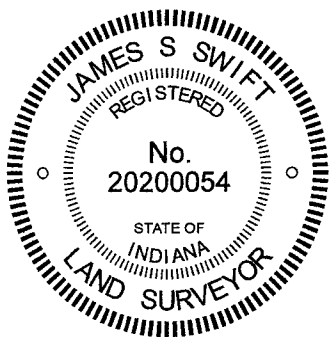
CORNER WITNESS DETAIL

SCALE 1" = 50'

- A - Boone County witness mark, flush, 27.4'
- B - Mag nail set in E. side power pole, 2' a.g., 74.9'
- C - Mag nail set in S. side power pole, 2' a.g., 87.3'
- D - S. edge, sign post, '300N / 1100W', flush, 43.9'



The Harrison monument was set in place of a rebar found. A BCS record of November 2, 1869 states, with respect to this corner, "Reestablished from stumps of both trees. Set Rock 12,15 marked +." No recent BCS tie cards were found referencing this corner. Excavation was performed at this corner on October 27, 2021. Prior to excavation, a 5/8-inch diameter rebar of unknown origin was found flush with the surface at the intersection of the two county roads. Excavation revealed that the rebar was 12 inches tall but did not reveal any further evidence of the corner. An area extending 2 feet north, 2.5 feet east, 3 feet south and 3.5 feet west of the rebar was excavated to approximately 22 inches deep. The bottom of the road bed was found at 20 inches deep. The position of the rebar fit well with other corners, including evidence of the corners one-half and one-quarter mile west, respectively, and also the relative positions of the corners one-half and one mile east, particularly with respect to the distances referenced in the 1869 record. The position of the rebar also fit well with local evidence of the corner, being at a reasonable approximation of the center of the intersection of the two county roads. The rebar was accepted as providing the best available evidence of the corner and was held as marking the corner. The rebar was removed during excavation and replaced with a Harrison monument in the same position on October 27, 2021. This corner was originally established as a wood post in 1829.



Kenneth E. Hedge
 Kenneth E. Hedge, County Surveyor

James S. Swift
 James S. Swift, IN LS 20200054
 November 1, 2021

Jefferson Township

Section 18 T19N, R2W	Section 17 T19N, R2W
Section 19 T19N, R2W	Section 20 T19N, R2W

SECTION CORNER RECORD

BOONE COUNTY SURVEYOR'S OFFICE

NW 300-1200

State Plane grid coordinates NAD83 (2011):
 North: 1761474.92 East: 3061202.92 (U.S. survey feet)

Type of monument: Harrison, 4" disk 'Section Corner'
 Depth: Six inches below adjacent road surface

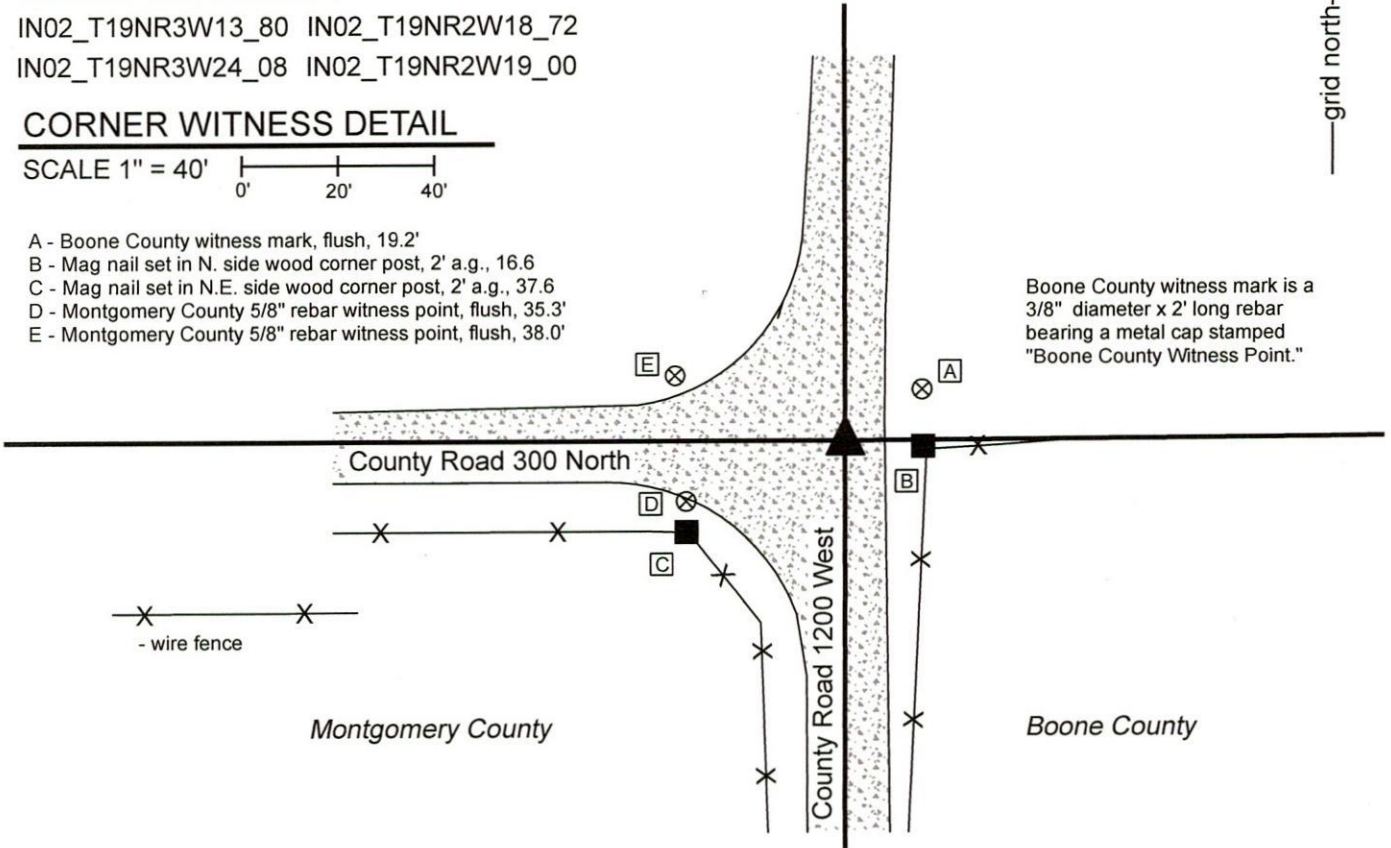
Indiana tie card references:
 IN02_T19NR3W13_80 IN02_T19NR2W18_72
 IN02_T19NR3W24_08 IN02_T19NR2W19_00

CORNER WITNESS DETAIL

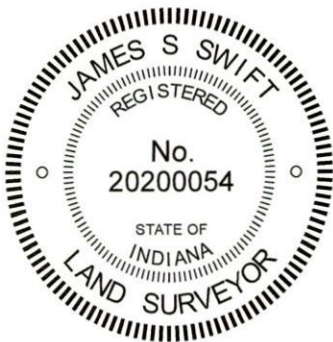
SCALE 1" = 40'

- A - Boone County witness mark, flush, 19.2'
- B - Mag nail set in N. side wood corner post, 2' a.g., 16.6
- C - Mag nail set in N.E. side wood corner post, 2' a.g., 37.6
- D - Montgomery County 5/8" rebar witness point, flush, 35.3'
- E - Montgomery County 5/8" rebar witness point, flush, 38.0'

Boone County witness mark is a 3/8" diameter x 2' long rebar bearing a metal cap stamped "Boone County Witness Point."



The Harrison monument was set in place of a rebar found. A BCS record of April 28-29, 1865 states, with respect to this corner, "A Rock. From G north on a corrected line." No recent BCS tie cards were found referencing this corner. A Section Corner Dossier dated April 23, 2015 provided by the Montgomery County Surveyor's Office shows the corner as being a 5/8 inch x 24 inch rebar with aluminum cap. The dossier states that the rebar was set in place of a stone found at 0.2 foot below grade. No dimensions are provided for the stone. The dossier states that the stone was 0.7 foot north and 0.75 east of a bent 5/8 inch rebar found flush with the surface of the road prior to excavation in 2015. The Montgomery County rebar was found at 3 inches below grade in good condition, evidently undisturbed. The rebar falls at the approximate center of the intersection of the gravel roads, approximately in-line with an ancient post and fence to the east. The Montgomery County rebar was held as marking the corner and was replaced with a Harrison monument in the same position on March 3, 2020. It is noted that though this corner falls on a range line, the corners for the adjacent sections represent a common corner with no offset. The standard corner set in 1819 was held by the federal subdividing surveyors in 1822. This was due to the presence of the west line of the Thorntown Reserve to the east and the practice of holding the standard corner and surveying from that corner to the east to establish a corner of the treaty line.



Kenneth E. Hedge
 Kenneth E. Hedge, County Surveyor

James S. Swift
 James S. Swift, IN LS 20200054
 March 17, 2020

Franklin Township
 Montgomery County

Jefferson Township
 Boone County

Section 13 T19N, R3W	Section 18 T19N, R2W
Section 24 T19N, R3W	Section 19 T19N, R2W