

# SECTION CORNER RECORD

## BOONE COUNTY SURVEYOR'S OFFICE

NE 300-050

State Plane grid coordinates NAD83 (CORS96):

North: 1761488.52 East: 3127177.76 (U.S. survey feet)

Type of monument: Harrison, 4" disk 'Section Corner'

Depth: One inch below adjacent road surface

Indiana tie card references:

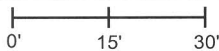
IN02\_T19NR1E18\_76

IN02\_T19NR1E19\_04



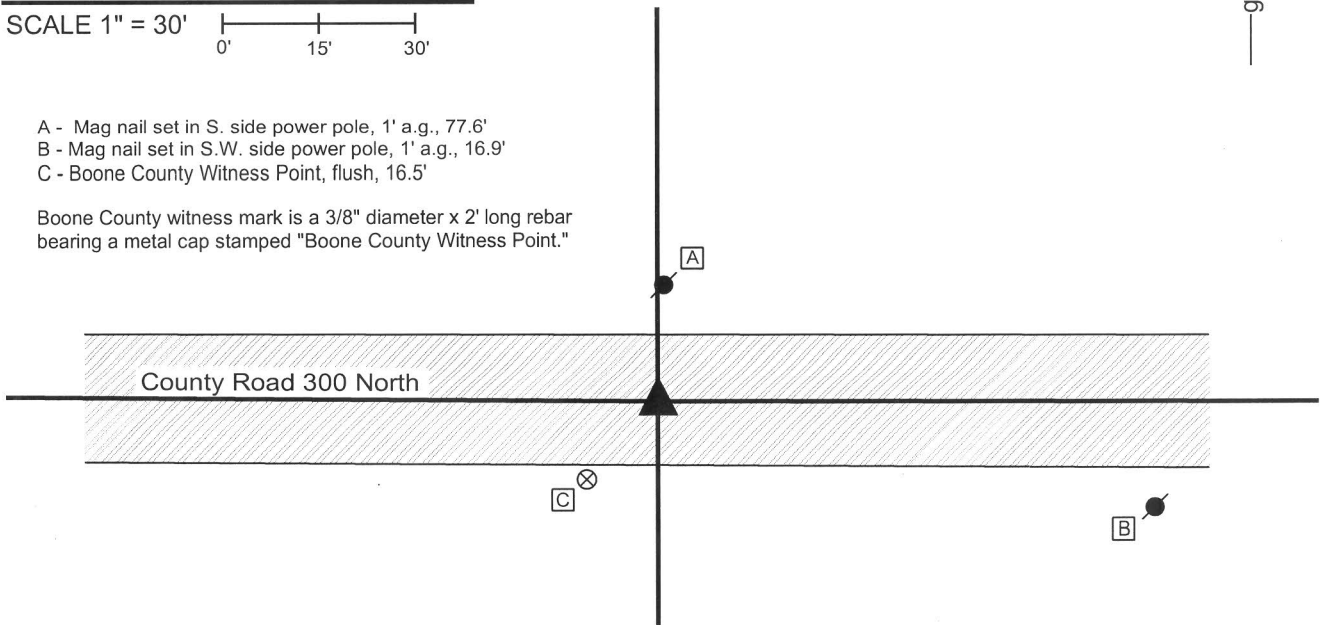
### CORNER WITNESS DETAIL

SCALE 1" = 30'

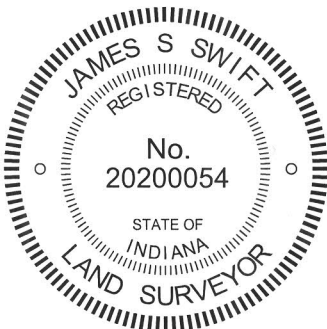


- A - Mag nail set in S. side power pole, 1' a.g., 77.6'
- B - Mag nail set in S.W. side power pole, 1' a.g., 16.9'
- C - Boone County Witness Point, flush, 16.5'

Boone County witness mark is a 3/8" diameter x 2' long rebar bearing a metal cap stamped "Boone County Witness Point."



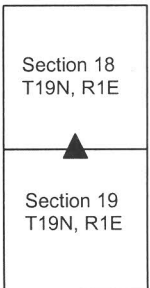
The harrison monument was set in place of a stone found. a BCS record of October 2, 3 & 5, 1857 states "Reestablished Set Rock 10 by 13." This record also shows a distance from the corner to the center of Elm Swamp Road to the east. A BCS tie card dated September 26, 2005 shows the corner as a harrison monument with no documentation of source. This corner was excavated November 14, 2013. Prior to excavation a harrison monument was found which fit with the distance ties shown on the 2005 tie card. This monument also fit well with the distance to the approximate center of Elm Swamp Road as shown on the 1857 record. Excavation revealed a stone found at 16 inches deep, west of the harrison. As found, the stone appeared to have been knocked over towards the east. The stone was removed from the road, and measured to be 13 inches by 10 inches by 7 inches. The stone was accepted as being the same monument described in the 1857 record. A harrison monument was set in place of the stone at the position of the main body of the stone, as found. The harrison monument found prior to excavation and removed during excavation was 2.0 feet east and 0.3 feet north of the stone. This corner was originally established as a wood post in 1822.



*Kenneth E. Hedge*  
 Kenneth E. Hedge, County Surveyor

*James S. Swift*  
 James S. Swift, IN LS 20200054  
 February 5, 2015

Center  
Township



PHOTOGRAPHIC DOCUMENTATION

Date of photography: November 14, 2013

View of the stone as found.



View of the stone, removed from the hole and stood vertical.



View from over the stone, looking west along C.R. 300 North.



For details and documentation, refer to related sheet "Section Corner Record."

# SECTION CORNER RECORD

NE 300-100

## BOONE COUNTY SURVEYOR'S OFFICE

State Plane grid coordinates NAD83 (CORS96):

North: 1761482.20 East: 3129821.45 (U.S. survey feet)

Type of monument: Harrison, 4" disk 'Section Corner'

Depth: One inch below adjacent road surface

Indiana tie card references:

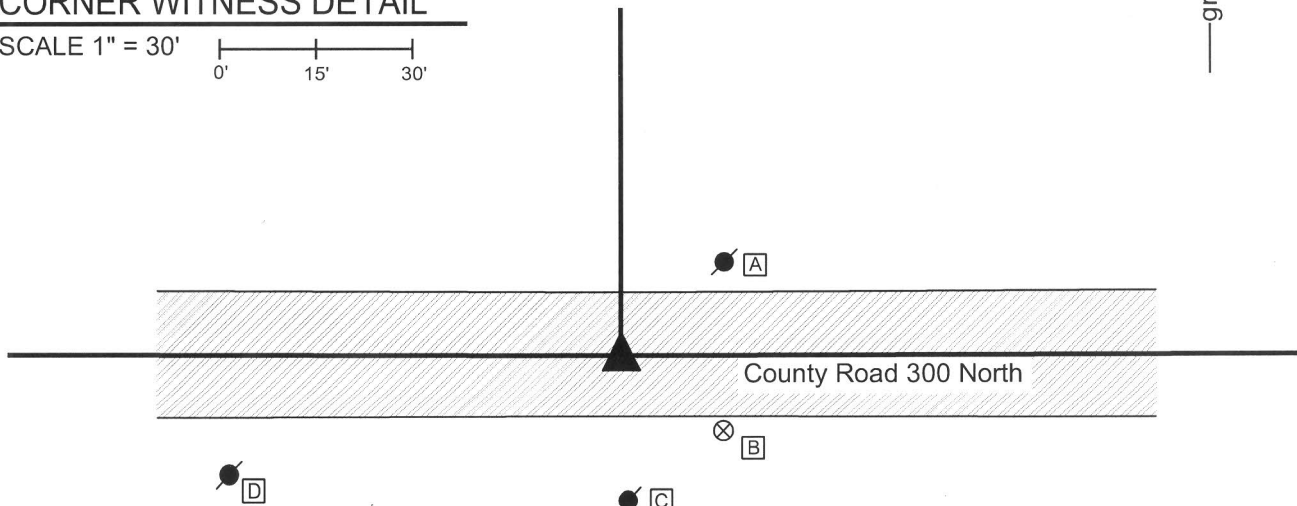
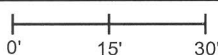
IN02\_T19NR1E18\_80 IN02\_T19NR1E17\_72

IN02\_T19NR1E19\_08 IN02\_T19NR1E20\_00



### CORNER WITNESS DETAIL

SCALE 1" = 30'



- A - Mag nail set in S. side power pole, 1' a.g., 21.3'
- B - Boone County witness mark, flush, 20.2'
- C - Mag nail set in N. side power pole, 1' a.g., 21.7'
- D - Mag nail set in N.E. side power pole, 1' a.g. 63.4'

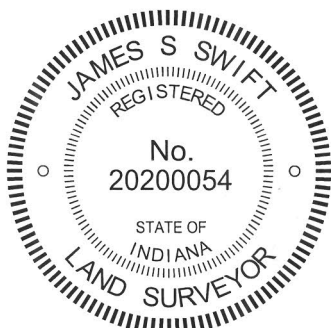
Boone County witness mark is a 3/8" diameter x 2' long rebar bearing a metal cap stamped "Boone County Witness Point."

The harrison monument was set in place of a vertical section of railroad rail found.

A BCS record of October 2, 3 & 5, 1857 states "Set Rock 9 by 11 in." A BCS tie card dated August 15, 1967 states "no stone." A BCS tie card dated July 28, 2005 shows the corner as a harrison monument with no documentation of source.

This corner was excavated on November 14, 2013. Prior to excavation, a harrison monument was found at 2 inches deep in a hole in the asphalt roadway. Excavation revealed a vertical section of railroad rail at 14 inches deep, 0.2 foot north and 0.05 foot west of the position of the harrison monument which had been removed during excavation. The top of the rail is at the depth of the bottom of the road bed. Excavation of an area extending 2.7 feet north, 4 feet east, 3 feet south and 2.5 feet west of the rail revealed no further evidence of the corner. It is most likely that the rail was set in association with the creation of the 1967 tie card, as it is known that it was a common practice for BCS survey crews working at that time to set rails at the purported location of the corner. The tie card shows the rail being in line with a corner post to the north. The rail was accepted as the best available evidence of the corner. A new harrison monument was set in the position of the rail.

This corner was originally established as a wood post in 1822.



*Kenneth E. Hedge*  
Kenneth E. Hedge, County Surveyor

*James S. Swift*  
James S. Swift, IN LS 20200054

February 5, 2015

Center Township

Section 18 T19N, R1E	Section 17 T19N, R1E
Section 19 T19N, R1E	Section 20 T19N, R1E

# SECTION CORNER RECORD

NE 350-100

## BOONE COUNTY SURVEYOR'S OFFICE

State Plane grid coordinates NAD83 (2011):

North: 1764131.14 East: 3129822.15 (U.S. survey feet)

Type of monument: Harrison, 4" disk 'Section Corner'

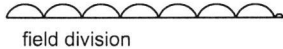
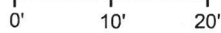
Depth: Two inches above the adjacent ground

Indiana tie card references:

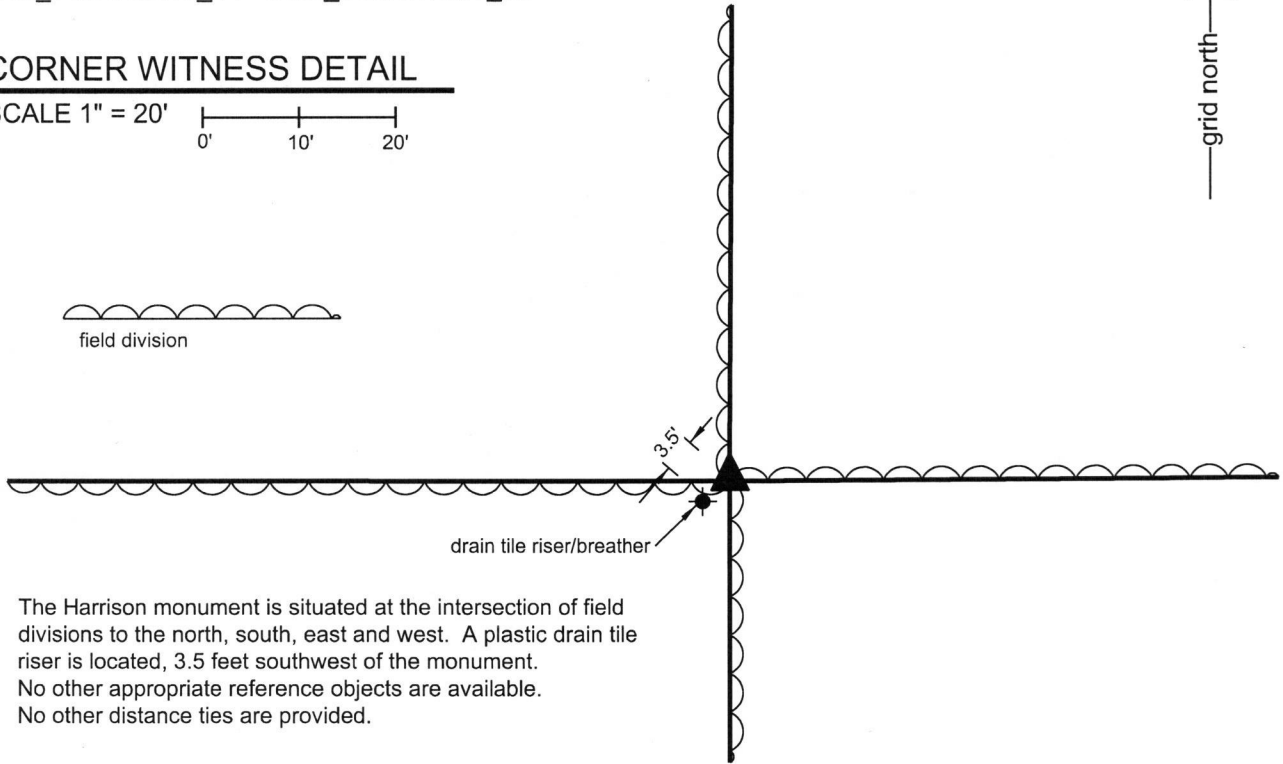
IN02\_T19NR1E18\_44 IN02\_T19NR1E17\_36

### CORNER WITNESS DETAIL

SCALE 1" = 20'



field division



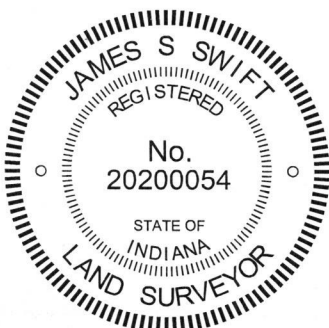
The Harrison monument is situated at the intersection of field divisions to the north, south, east and west. A plastic drain tile riser is located, 3.5 feet southwest of the monument. No other appropriate reference objects are available. No other distance ties are provided.

The Harrison monument was set in place of a Harrison monument which previously existed at the corner.

No specific descriptions of this corner were found in the BCS Surveyor's Record beyond the original establishment of the corner as a wood post in 1822. A BCS tie card dated September 30, 2005 shows the corner as a Harrison monument with no reference to source.

This corner was excavated on October 18, 2017. Prior to excavation, a steel t-post was found at the intersection of field divisions in all cardinal directions. Two stones were found on the surface adjacent to the t-post, both of which were sitting on top of the ground, not embedded in the dirt. The Harrison monument shown on the 2005 tie card was not found. A plastic, perforated riser/breather for a subterranean tile was observed adjacent to the corner. It is likely that the Harrison monument was removed during tile installation or repair. It also known that Harrison monuments set in such a situation in 2005 were most likely set directly in the dirt, with no concrete for stabilization. Hence, such a monument would have been easily removed during excavation of the adjacent tile.

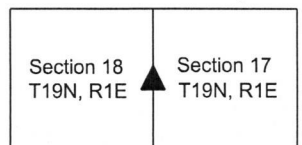
The position of the Harrison monument shown on the 2005 tie card fit well with the relative positions of proximate corners and fit well with calls for the half section line in the description of a property to the west on Elm Swamp Road, described in Instrument 201500007606 in the Office of the Boone County Recorder. The previous position for the corner was held and a Harrison monument was set in the position of the previous monument, as shown on the 2005 tie card. It is noted that approximately 0.3 foot uncertainty in all directions is associated with the replacement of the monument, per the state plane coordinates and with respect to the relative positions of other found monuments from 2005 and the coordinates reported for them.



*Kenneth E. Hedge*  
Kenneth E. Hedge, County Surveyor

*James S. Swift*  
James S. Swift, IN LS 20200054  
October 24, 2017

Center Township





# SECTION CORNER RECORD

NE 400-000

## BOONE COUNTY SURVEYOR'S OFFICE

State Plane grid coordinates NAD83 (2011):

Corner 1: North: 1766724.12 East: 3124826.08 (U.S. survey feet)

Corner 2: North: 1766794.02 East: 3124826.04 (U.S. survey feet)

Both Corners: Harrison, 4" disk 'Section Corner', flush

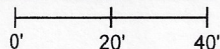
Indiana tie card references:

IN02\_T19NR1E07\_72 IN02\_T19NR1W12\_80

IN02\_T19NR1W13\_08 IN02\_T19NR1E18\_00

### CORNER WITNESS DETAIL

SCALE 1" = 40'

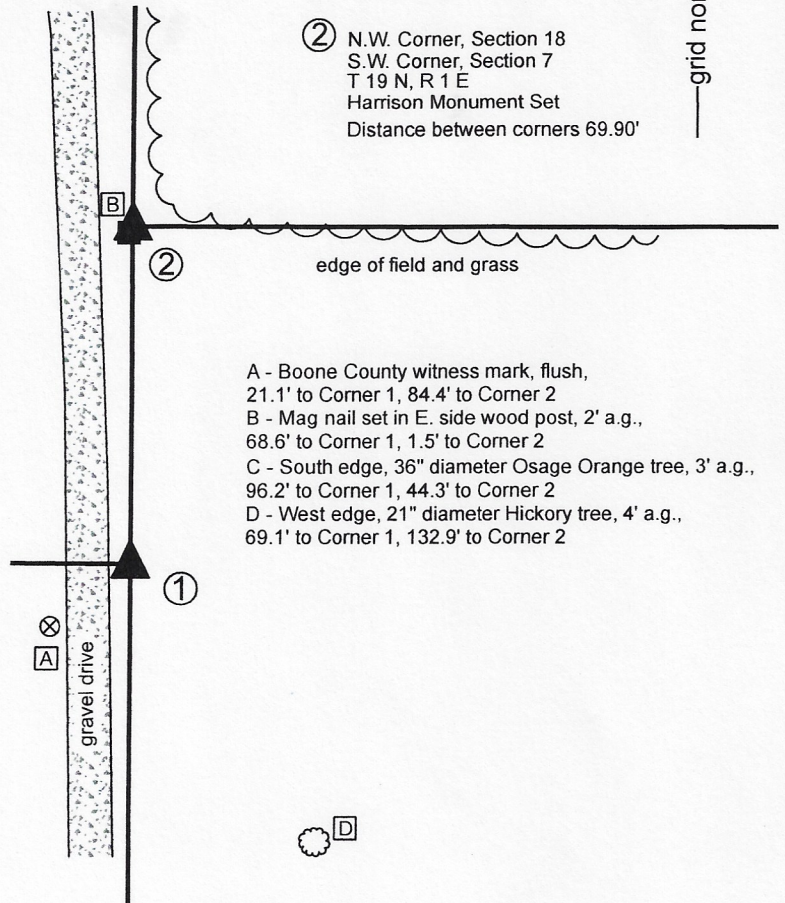


The Harrison monument at Corner 2 was set in place of a disturbed monument found. The Harrison monument at Corner 1 was set in the position of a previous monument, per information shown on a BCS tie sheet dated September 30, 2005. Both of these corners are original federal corners. Corner 1 was set in 1819 and Corner 2 was set in 1822. No specific descriptions of the corners were found in the BCS Surveyor's Record beyond the original establishments of the corners as wood posts in 1819 and 1822, respectively. Both corners are shown on a BCS tie card dated September 30, 2005 which shows them as Harrison monuments with no documentation of source.

Corner 2 is situated slightly east of a wood post, generally in-line with evidence of the north line of the northwest quarter of the northwest quarter of Section 18, in the form of a wood corner post, rebar at the base of a wood corner post, and east-west field division. The Harrison monument found at Corner 2 was disturbed, leaning substantially to the southwest, as found. No monument was found at Corner 1. Ron Neese, owner of the surrounding land confirms that the monument was removed several years ago during installation of a drainage tile. The record federal closing distance for these corners is 93 links, or 61.4 feet. The corners as established per the 2005 tie card are separated by 69.90 feet. Existing fences and rebars found providing evidence of the north line of the northeast quarter of section 13 fall generally along the line, or slightly south thereof, connecting Corner 1 as established per the 2005 tie card and the north quarter corner of Section 13 (see BCS Corner NW 400-050). The furthest east of this evidence was found at approximately 600 feet west of Corner 1. It was observed that the 2005 position for Corner 1 represents the northerly most position expected with respect to the physical evidence to the west and that some evidence indicates that the corner could be several feet further south. Hence it is observed that although the two corners are substantially further apart than the record federal closing distance, both corners work with respective evidence to the west (Corner 1) and east (Corner 2) and that no physical evidence was found to indicate that the corners should be separated by less distance than is shown on the 2005 tie card. Manual excavation around the monument and post at Corner 2 revealed various rubble and small rocks but no stones or other monuments which appeared to represent evidence of the corner. Exploratory excavation was not performed at Corner 1, given the known fact that the vicinity of this corner was substantially disturbed during the recent tile installation.

Corner 2 was established per reference ties shown on the 2005 tie card, which fit with the found, though disturbed, monument. Corner 1 was established at the southerly prolongation of a line prolonged from the east quarter corner of Section 12 (see BCS Corner NW 450-000) through Corner 2 at 69.90 feet, per the 2005 tie card. Harrison monuments were set in concrete at both corners on October 8, 2020.

- ① S.E. Corner, Section 12  
N.E. Corner, Section 13  
T 19 N, R 1 W  
Harrison Monument Set
- ② N.W. Corner, Section 18  
S.W. Corner, Section 7  
T 19 N, R 1 E  
Harrison Monument Set  
Distance between corners 69.90'

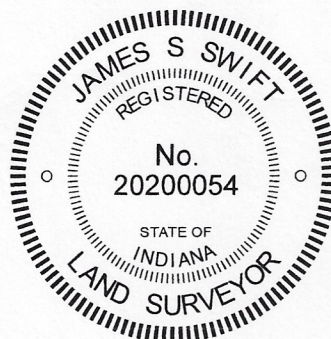


- A - Boone County witness mark, flush, 21.1' to Corner 1, 84.4' to Corner 2
- B - Mag nail set in E. side wood post, 2' a.g., 68.6' to Corner 1, 1.5' to Corner 2
- C - South edge, 36" diameter Osage Orange tree, 3' a.g., 96.2' to Corner 1, 44.3' to Corner 2
- D - West edge, 21" diameter Hickory tree, 4' a.g., 69.1' to Corner 1, 132.9' to Corner 2

*Kenneth E. Hedge*  
Kenneth E. Hedge, County Surveyor

*James S. Swift*  
James S. Swift, IN-LS 20200054

October 13, 2020



Washington Township Clinton Township

Section 12 T19N, R1W	Section 7 T19N, R1E
Section 13 T19N, R1W	Section 18 T19N, R1E

Center Township



# SECTION CORNER RECORD

NE 400-050

## BOONE COUNTY SURVEYOR'S OFFICE

State Plane grid coordinates NAD83 (2011):

North: 1766786.88 East: 3127191.86 (U.S. survey feet)

Type of monument: Harrison, 4" disk 'Section Corner'

Depth: Three inches above adjacent ground

Indiana tie card references:

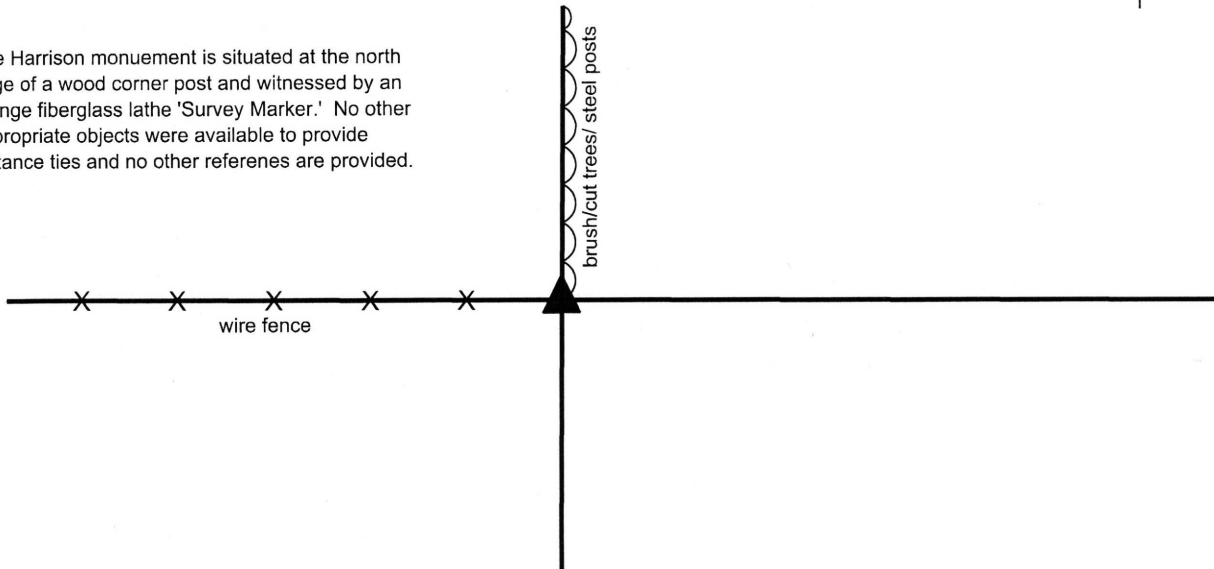
IN02\_T19NR1E07\_76 IN02\_T19NR1E18\_04



### CORNER WITNESS DETAIL

No scale

The Harrison monument is situated at the north edge of a wood corner post and witnessed by an orange fiberglass lathe 'Survey Marker.' No other appropriate objects were available to provide distance ties and no other referenes are provided.

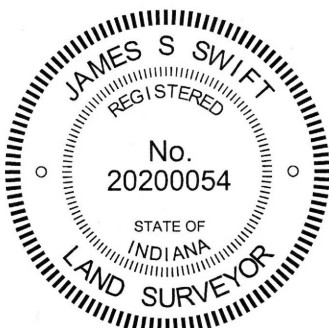


The Harrison Monument was set in place of a stone found.

A BCS record of September 7, 1863 states, with respect to this corner, "One tree gone, the other turned out by the roots, found a stone at corner." A subsequent record of February 7, 1873 references the corner as a terminal point for measurements but makes no mention of a monument, presumably holding the stone found 10 years earlier. No recent BCS tie cards were found referencing this corner.

Excavation was performed at this corner of November 27, 2017. Prior to excavation, no specific artificial survey monuments were known to represent the corner and the most obvious evidence of the corner was a wood corner post with standing fencing to the west, fencing cut-off to the east and in line with a line of steel posts, brush and cut trees to the north. The position of the post fit well with proximate corners. Excavation around the post revealed several stones. Two small stones were found on the east side of the post and a larger stone was found at the north edge of the post. The stone was not vertical, as found, but also did not appear to be acting as a brace rock for the post. The stone, as found, was 19 inches E-W by 10 inches N-S by 10 inches tall. An etched + mark was found on the top side, near the west edge of the rock. Given the size, position and mark, the rock was accepted as representing the stone found and referenced in 1863. In the field, it appeared most likely that the stone was on its side. The stone was accepted as representing the best available evidence of the corner. The stone was removed and replaced with a Harrison monument in the position of the main body of the stone, as originally found.

This corner was originally established as a wood post in 1822.



*Kenneth E. Hedge*  
Kenneth E. Hedge, County Surveyor

*James S. Swift*  
James S. Swift, IN LS 20200054  
January 17, 2018

Clinton  
Township

Section 7  
T19N, R1E

Center  
Township

Section 18  
T19N, R1E

# SECTION CORNER RECORD

# NE 400-100

## BOONE COUNTY SURVEYOR'S OFFICE

State Plane grid coordinates NAD83 (2011):

North: 1766779.94 East: 3129833.33 (U.S. survey feet)

Type of monument: Harrison, 4" disk 'Section Corner'

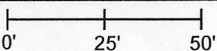
Depth: Flush with surrounding ground

Indiana tie card references:

IN02\_T19NR1E08\_72 IN02\_T19NR1E07\_80

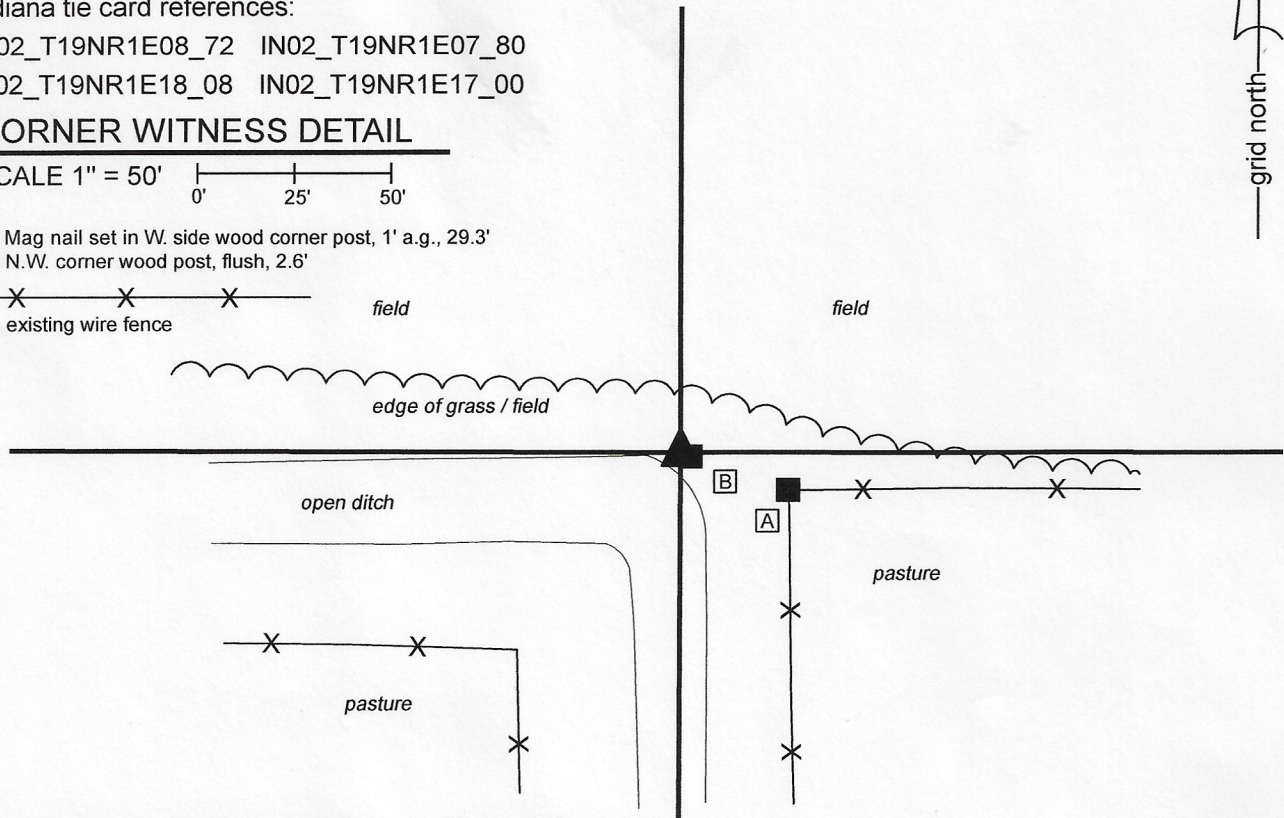
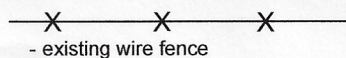
IN02\_T19NR1E18\_08 IN02\_T19NR1E17\_00

### CORNER WITNESS DETAIL

SCALE 1" = 50' 

A - Mag nail set in W. side wood corner post, 1' a.g., 29.3'

B - N.W. corner wood post, flush, 2.6'



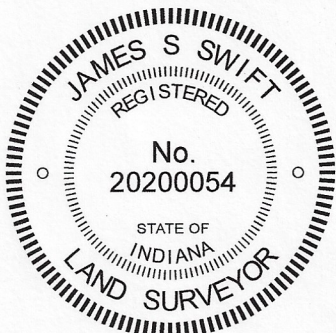
The Harrison monument was set in place of a Harrison monument found.

A BCS record dated March 9, 1886 states, with respect to this corner, "Reestablished by measurement (found point of stake) and set rock 20.14.12 + top - north 10 feet set wit 20.18.12."

A BCS tie card dated September 28, 2005 calls the corner a Harrison monument.

The Harrison monument was found in good condition, though not firmly attached to the ground, as shown on the 2005 tie card. The monument is 2.6 feet NW of the northwest edge of a wood corner post and 1 foot north of a rock found embedded in the soil. It is observed that this corner falls along the north edge of a deep open ditch. Clearly the immediate vicinity of the corner has been excavated and disturbed in the past. The wood post is not held as ancient evidence of the corner, as local landowner Tom Cunningham reports that the post was set in the 1960s following a tornado and has been doubted as representing the corner. The found stone is not of the same dimensions as called in the 1886 record and appears to have been haphazardly set. It does not appear to have been purposely set to mark the corner. No explanation is offered on the 2005 tie card for why the monument was set at its precise location, though it is noted that the position of the monument fits well with monumentation found marking property corners of properties along Elm Swamp Road, to the west, with respect to calls for the center of that road and the east line of the west half of the northeast quarter of section 18. The monument is situated slightly west of the southerly prolongation of fencing found providing evidence of the west line of the southwest quarter of section 8. Overall, up to 3 feet of uncertainty in all directions may be attributed to the position of the monument with respect to the found evidence. No evidence was found, however, which firmly disputes the position of the existing county monument so that position was held as the position of the corner. The existing Harrison was removed and replaced with a new Harrison, set firmly in concrete on May 13, 2020.

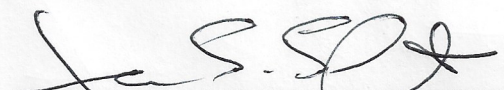
This corner was originally established as a wood post in 1822.



  
Kenneth E. Hedge, County Surveyor

Clinton Township

Section 7 T19N, R1E	Section 8 T19N, R1E
Section 18 T19N, R1E	Section 17 T19N, R1E

  
James S. Swift, IN LS 20200054

Center Township

June 30, 2020