

# SECTION CORNER RECORD

SE 200-600

## BOONE COUNTY SURVEYOR'S OFFICE

State Plane grid coordinates NAD83 (NSRS 2007):

North: 1735675.03 East: 3156486.41 (U.S. survey feet)

Type of monument: Harrison, 4" disk 'Section Corner'

Depth: One inch below adjacent road surface

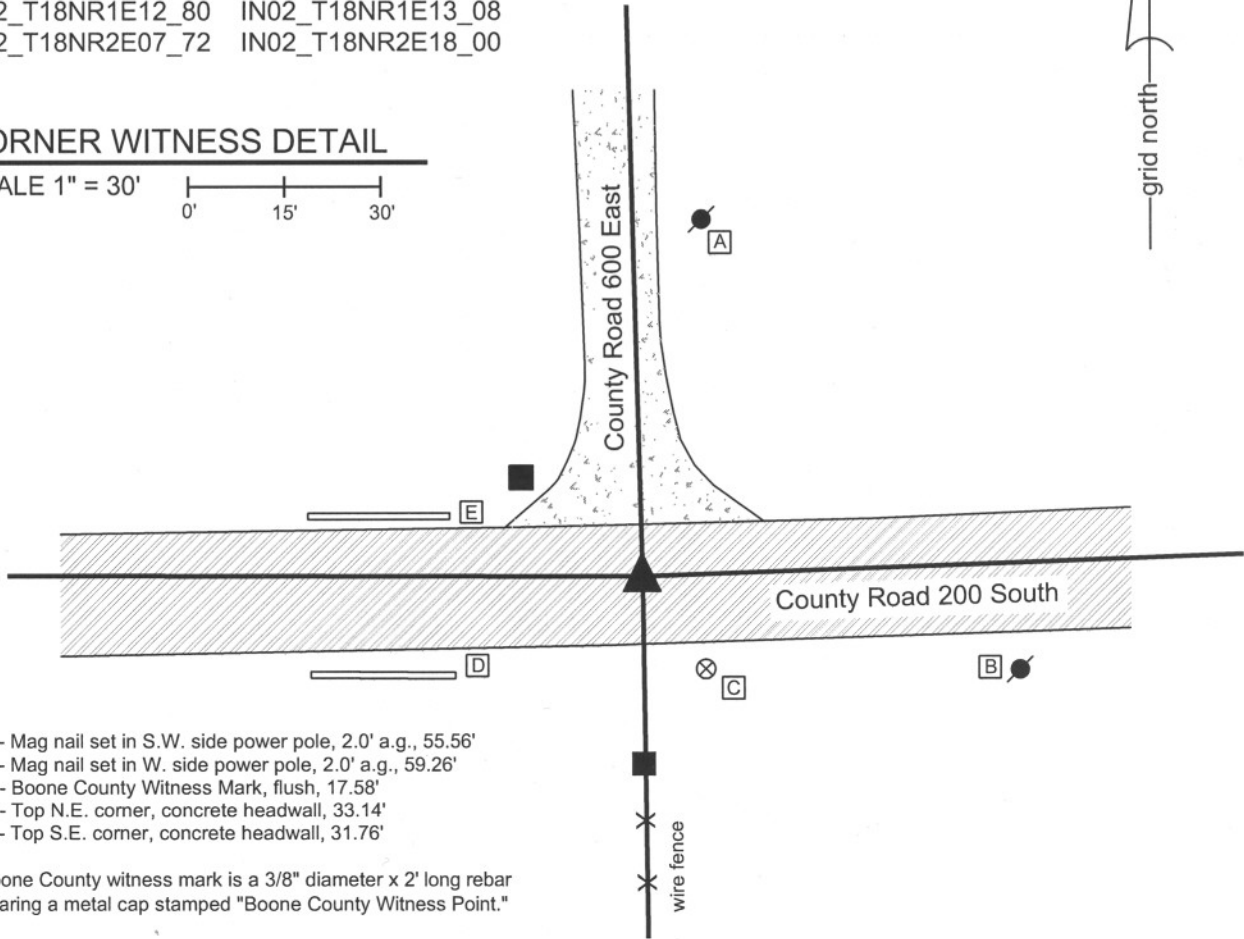
Indiana tie card references:

IN02\_T18NR1E12\_80 IN02\_T18NR1E13\_08

IN02\_T18NR2E07\_72 IN02\_T18NR2E18\_00

### CORNER WITNESS DETAIL

SCALE 1" = 30'



- A - Mag nail set in S.W. side power pole, 2.0' a.g., 55.56'
- B - Mag nail set in W. side power pole, 2.0' a.g., 59.26'
- C - Boone County Witness Mark, flush, 17.58'
- D - Top N.E. corner, concrete headwall, 33.14'
- E - Top S.E. corner, concrete headwall, 31.76'

Boone County witness mark is a 3/8" diameter x 2' long rebar bearing a metal cap stamped "Boone County Witness Point."

The harrison monument was set over the top, center of a stone found.

A BCS record of April 26, 1865 states "Reestablished from Oak tree stump. Set Rock 10.20.9 in Marked T..."

This corner was excavated on May 30, 2008. Prior to excavation no monuments were visible nor were any detected with a magnetic locator. Excavation centered on the approximate intersection of the centers of the two county roads yielded the record stone found at a depth of 14 inches below the road surface. The stone measures 10 inches NS by 9 inches EW and is 17 inches tall, set vertically, well embedded in the clay base layer below the road. No specific markings were observed on the stone. The stone may have been broken off at some point, as it is slightly shorter than the record height and does not bear the described markings. The harrison monument was set directly over the top of the stone.

This corner was originally established as a wood post in 1819. No record offset was recorded as the closing corner is coincident with the standard corner.



*Kenneth E. Hedge*  
 Kenneth E. Hedge, County Surveyor

*James S. Swift*  
 James S. Swift, IN LS 20200054  
 March 11, 2009

Worth Township

Section 12 T18N, R1E	Section 7 T18N, R2E
Section 13 T18N, R1E	Section 18 T18N, R2E

PHOTOGRAPHIC DOCUMENTATION

Date of photography: May 30, 2008

Corner stone, view from West.

Note top of clay layer exposed and visible around stone.



Corner stone, view from South.



For details and documentation, refer to related sheet "Section Corner Record."

# SECTION CORNER RECORD

SE 200-650

## BOONE COUNTY SURVEYOR'S OFFICE

State Plane grid coordinates NAD83 (NSRS 2007):  
North: 1735776.33 East: 3159300.17 (U.S. survey feet)

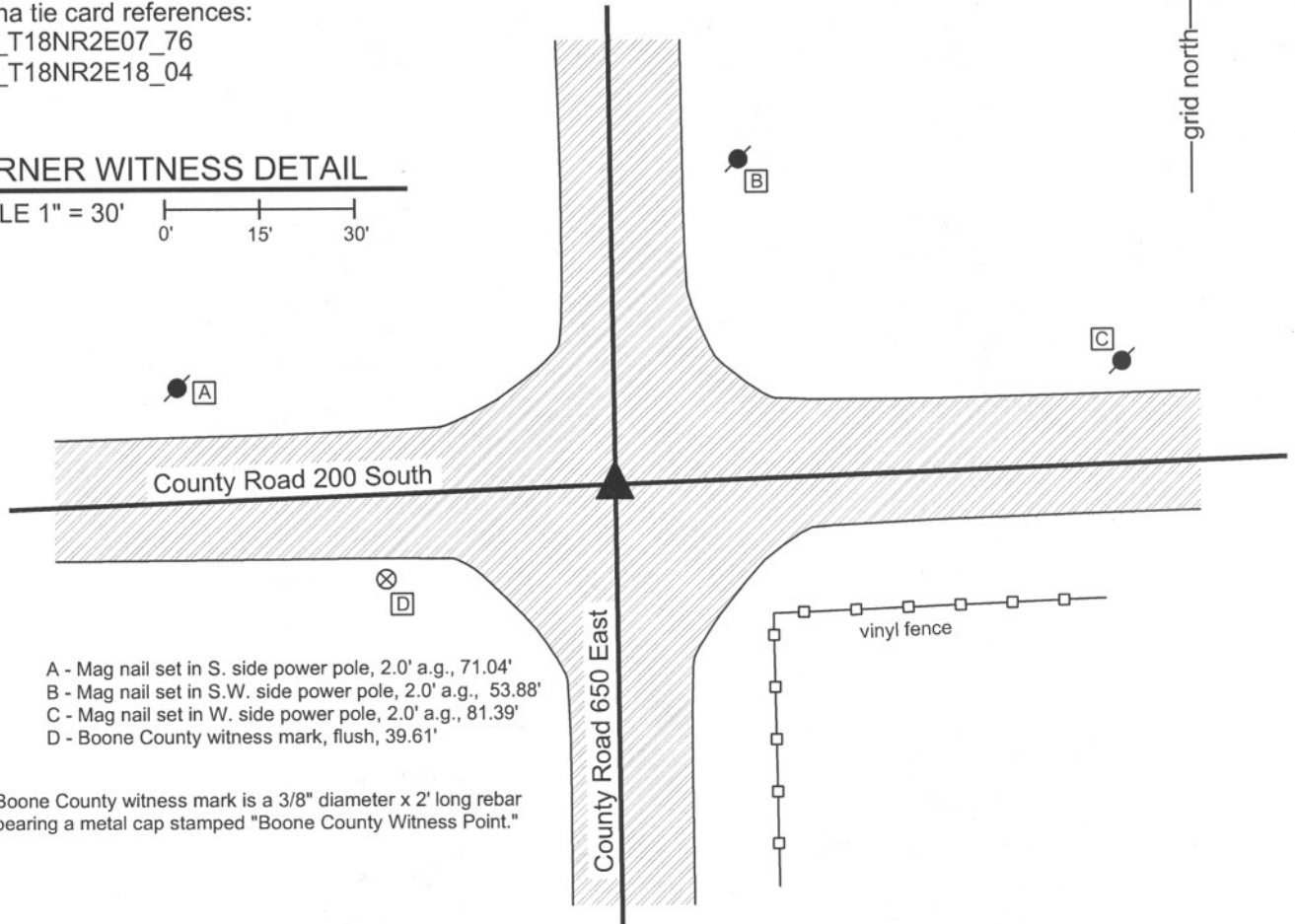
Type of monument: Harrison, 4" disk 'Section Corner'  
Depth: One inch below adjacent road surface

Indiana tie card references:  
IN02\_T18NR2E07\_76  
IN02\_T18NR2E18\_04



### CORNER WITNESS DETAIL

SCALE 1" = 30'  
0' 15' 30'



- A - Mag nail set in S. side power pole, 2.0' a.g., 71.04'
- B - Mag nail set in S.W. side power pole, 2.0' a.g., 53.88'
- C - Mag nail set in W. side power pole, 2.0' a.g., 81.39'
- D - Boone County witness mark, flush, 39.61'

Boone County witness mark is a 3/8" diameter x 2' long rebar bearing a metal cap stamped "Boone County Witness Point."

The harrison monument was set over the etched "+" on the top of a stone found. A BCS record dated April 26, 1865 states "Re-established from rotten Hick stump. Set Rock 16.14 by 8 in. marked +." A BCS tie card dated August 17, 1967 states "no stone." This corner was excavated on June 6, 2008. Prior to excavation two mag nails were visible at the surface, adjacent to each other. Excavation exposed a railroad spike below the two mag nails. A railroad rail was found slightly lower than the railroad spike. The spike was situated against the northeast edge of the rail. Further excavation yielded the record stone at 30 inches deep. The stone is fully embedded in the clay. With the top 8 inches of the stone exposed, it measures 8 inches EW by 12 inches NS and has a clearly identifiable "+" on the top center. An old post was found lying horizontally, embedded in the clay, extending east from the stone. No explanation is offered with respect to the post. The stone appeared to be stable and undisturbed. The mag nails were 1.5 feet north and 0.6 feet east of the etched "+" on the stone. The harrison was set directly over the etched + on the top, center of the stone. No specific source is documented for the railroad rail, though it was likely set at the time of the creation of the 1967 tie card, which was clearly erroneous in the statement "no stone." This corner was originally established as a wood post in July, 1821.

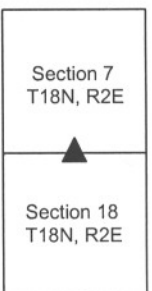


*Kenneth E. Hedge*  
Kenneth E. Hedge, County Surveyor

*James S. Swift*  
James S. Swift, IN LS 20200054

March 11, 2009

Worth Twp



PHOTOGRAPHIC DOCUMENTATION

Date of photography: June 6, 2008

Corner stone - view from South.



Corner stone - overhead view from West.



Same picture as above with etched "+" enhance for ease of visual detection.



View from South showing County Road 650 East to the North.



Overhead view from West.



For details and documentation, refer to related sheet "Section Corner Record."

# SECTION CORNER RECORD

SE 200-700

## BOONE COUNTY SURVEYOR'S OFFICE

State Plane grid coordinates NAD83 (NSRS 2007):

North: 1735870.87 East: 3161948.65 (U.S. survey feet)

Type of monument: Harrison, 4" disk 'Section Corner'

Depth: 1 inch below adjacent road surface

Indiana tie card references:

IN02\_T18NR2E07\_80

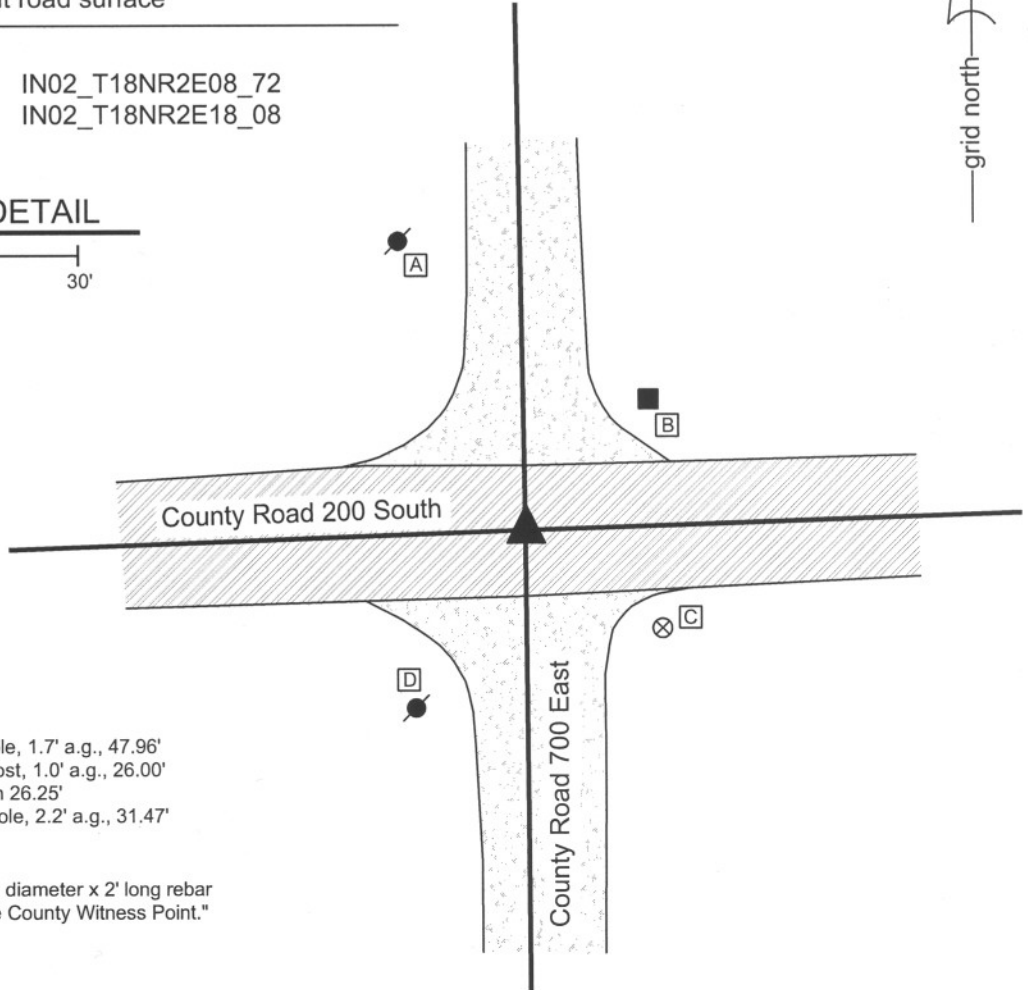
IN02\_T18NR2E08\_72

IN02\_T18NR2E17\_00

IN02\_T18NR2E18\_08

### CORNER WITNESS DETAIL

SCALE 1" = 30'



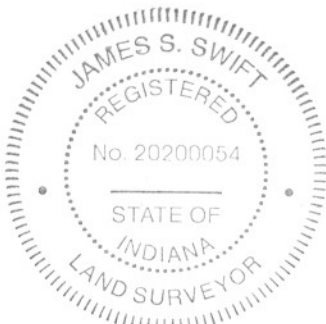
- A - Mag Nail set in S.E. side powerpole, 1.7' a.g., 47.96'
- B - Mag Nail set in S.W. side wood post, 1.0' a.g., 26.00'
- C - Boone County witness mark, flush 26.25'
- D - Mag Nail set in N.E. side power pole, 2.2' a.g., 31.47'

Boone County witness mark is a 3/8" diameter x 2' long rebar bearing a metal cap stamped "Boone County Witness Point."

The harrison monument was set in place of a railroad rail found.

A BCS record of August 17, 1869 states "found from stump of Oak and reestablished drove stake under a rock 16,13.6 +..." A BCS tie card of July 1970 states "no stone, set rail." The railroad rail was found 8 inches below grade in the approximate center of County Road 200 South, slightly west of the apparent physical intersection of said road with County Road 700 East. A four foot N-S by 7 foot E-W area, centered on the rail in the N-S dimension and extended to 5.5 feet east of the rail, was excavated on April 4, 2008. The record stone was not found, nor was any other monument found. Signs of significant disturbance were detected in the gravel layer at the bottom of the road. Excavation was performed to a depth of 2.5 feet and the main layer of clay begins at approximately 2 feet. All sides of the hole were probed every 4 to 6 inches for a minimum of 2 foot penetration into the surrounding area. The railroad rail was replaced with a harrison monument.

This corner was originally established as a wood post in July 1821.



*Kenneth E. Hedge*  
 Kenneth E. Hedge, County Surveyor

*James S. Swift*  
 James S. Swift, IN LS 20200054

March 11, 2009

Worth Township

Section 7 T18N, R2E	Section 8 T18N, R2E
Section 18 T18N, R2E	Section 17 T18N, R2E

# SECTION CORNER RECORD

SE 250-600

## BOONE COUNTY SURVEYOR'S OFFICE

State Plane grid coordinates NAD83 (NSRS 2007):

North: 1733038.80 East: 3156523.58 (U.S. survey feet)

Type of monument: Harrison, 4" disk 'Section Corner'

Depth: 4 inches above adjoining ground.

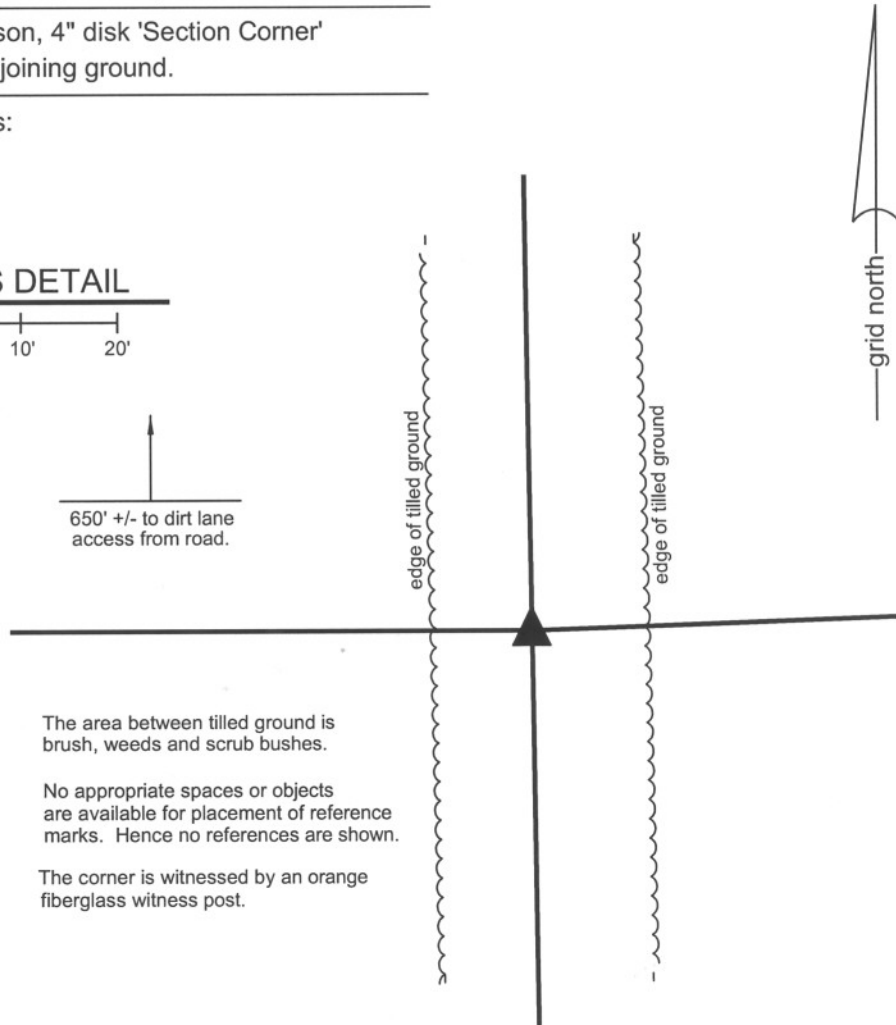
Indiana tie card references:

IN02\_T18NR1E13\_44

IN02\_T18NR1E18\_36

### CORNER WITNESS DETAIL

SCALE 1" = 20'



650' +/- to dirt lane  
access from road.

The area between tilled ground is  
brush, weeds and scrub bushes.

No appropriate spaces or objects  
are available for placement of reference  
marks. Hence no references are shown.

The corner is witnessed by an orange  
fiberglass witness post.

The harrison monument was set in the position of the found remnants of a wood corner post.

This corner was excavated on November 9, 2009 and monumented on November 12, 2009. Prior to excavation a small pile rocks was visible in the vicinity of the corner but no specific monuments were known to exist. Prior to excavation an approximate position for the corner was computed, being the midpoint of the line between the section corners to the north and south. A pile of various medium sized rock was found near this computed point. Excavation in this area revealed that immediately north and east of the pile of rocks was evidence of an old corner post. Remnants of a wood post were found, surrounded by several rocks which appeared by their orientation to be brace rocks for the post. Fragments of fence were found bearing north, south and east from the post. None of the rocks had the characteristics of a section corner stone and all the rocks were accepted as being either brace rocks or just rocks piled near the post. The remnants of the post were accepted as the best evidence of the corner and the harrison monument was set in place of the post fragments. It is noted that although this corner is on the range line, there is a common position for the standard and closing corners as offsets were recorded at neither the section corner to the north nor the section corner to the south.

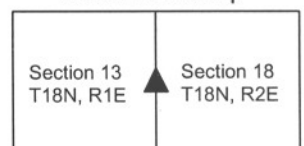
This corner was originally established as a wood post in 1819.



*Kenneth E. Hedge*  
Kenneth E. Hedge, County Surveyor

*James S. Swift*  
James S. Swift, IN LS 20200054  
July 14, 2010

Worth Township



# SECTION CORNER RECORD

## BOONE COUNTY SURVEYOR'S OFFICE

SE 250-700

State Plane grid coordinates NAD83 (NSRS 2007):

North: 1733225.88 East: 3161970.45 (U.S. survey feet)

Type of monument: Harrison, 4" disk 'Section Corner'

Depth: 5 inches below adjacent gravel road surface

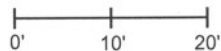
Indiana tie card references:

IN02\_T18NR2E17\_36

IN02\_T18NR2E18\_44

### CORNER WITNESS DETAIL

SCALE 1" = 20'



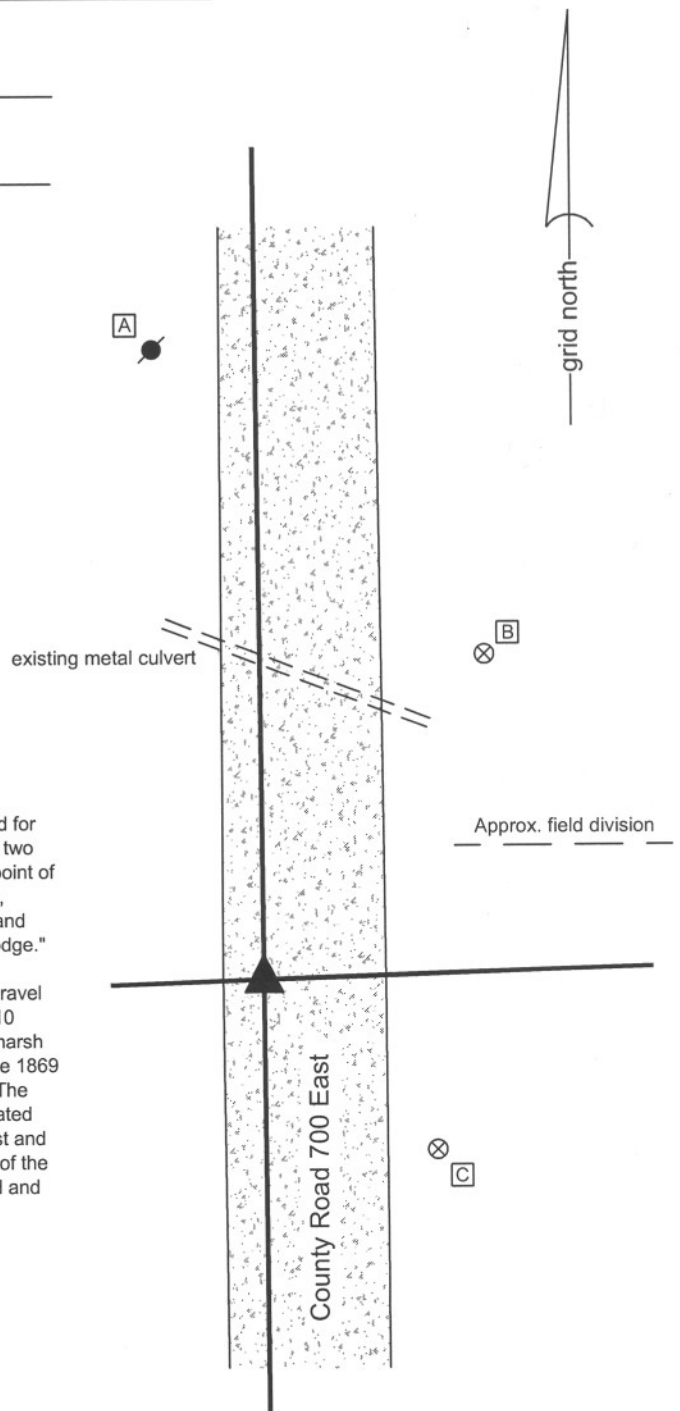
A - Mag nail set in SE side powerpole, 2' a.g., 65.8'

B - Boone County witness mark, flush, 40.97'

C - Boone County witness mark, flush, 25.26'

Boone County witness mark is a 3/8" diameter x 2' long rebar bearing a metal cap stamped "Boone County Witness Point."

The harrison monument was set in place of a 5/8 inch rebar found. This corner is mentioned in a BCS record dated August 17, 1869 which states "Thence North 39.91 to D where drove no stake." No BCS tie cards were found for this corner. Excavation occurred on September 16, 2008. Prior to excavation, two rebars were found, both 5/8 inch, and both in the immediate vicinity of the midpoint of the line between the northeast and southeast corners of section 18. The lower, apparently older rebar was capped with a plastic cap stamped "witness point" and the higher, apparently newer rebar was capped with a plastic cap stamped "Dodge." The newer rebar was 0.15 of a foot southeast of the older rebar. Excavation revealed no further monuments. The road bed consisted of 6 inches modern gravel over 6 inches of older, sandy gravel material. Below this was approximately 10 inches of a thick, peat like material which appears to be residual of an former marsh in this area. This may be the reason for the fact that no stake was driven on the 1869 survey. The two rebars both appear to be intended to be set at the midpoint. The older rebar is approximately 0.1 foot N and 0.1 foot E of the midpoint as calculated from field work in 2008, after the Harrison monuments were set at the northeast and southeast corners of the section. The newer rebar is approximately 0.2 foot E of the calculated midpoint. For purposes of monumentation, the older rebar was held and the harrison was set in the position it occupied prior to excavation. This corner was originally established as a wood post in July, 1821.



*Kenneth E. Hedge*  
 Kenneth E. Hedge, County Surveyor

*James S. Swift*  
 James S. Swift, IN LS 20200054

March 11, 2009

Worth Township

Section 18 T18N, R2E	▲	Section 17 T18N, R2E
-------------------------	---	-------------------------

# SECTION CORNER RECORD

SE 300-600

## BOONE COUNTY SURVEYOR'S OFFICE

State Plane grid coordinates NAD83 (NSRS 2007):  
North: 1730404.93 East: 3156558.88 (U.S. survey feet)

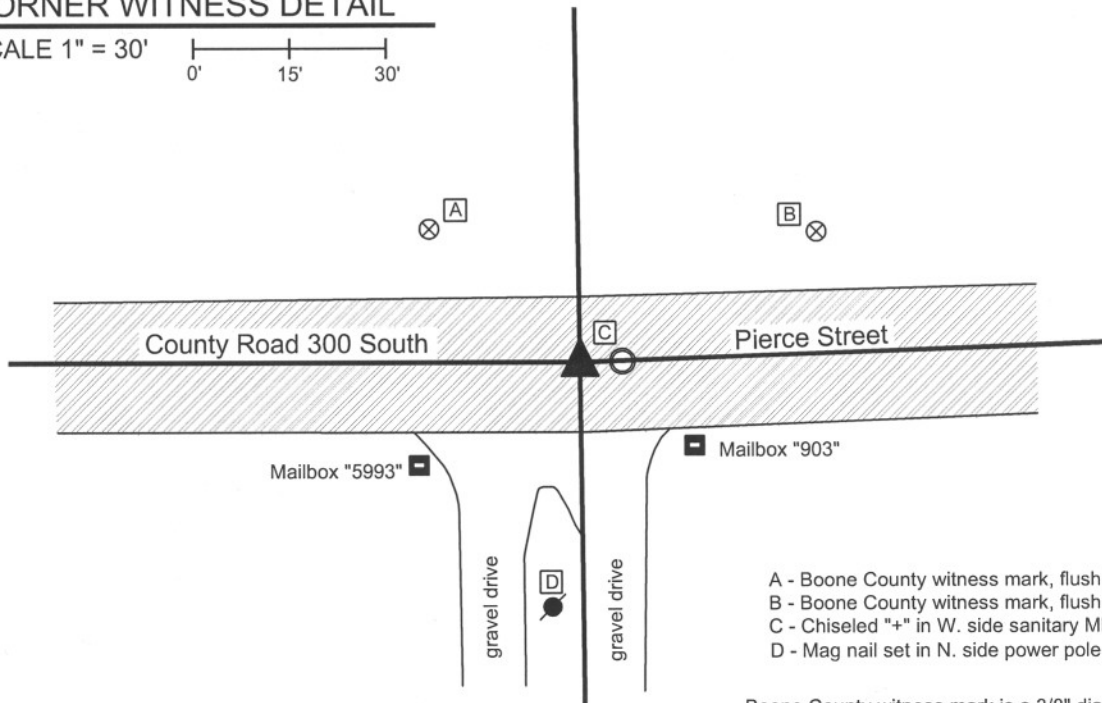
Type of monument: Harrison, 4" disk 'Section Corner'  
Depth: One inch below adjacent road surface

Indiana tie card references:  
IN02\_T18NR1E13\_80 IN02\_T18NR2E18\_72  
IN02\_T18NR1E24\_08 IN02\_T18NR2E19\_00



### CORNER WITNESS DETAIL

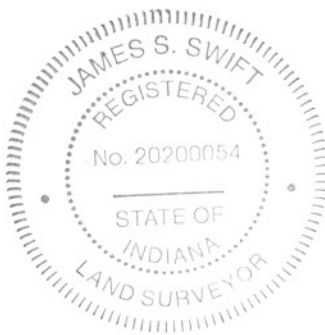
SCALE 1" = 30'



- A - Boone County witness mark, flush, 31.56'
- B - Boone County witness mark, flush, 42.37'
- C - Chiseled "+" in W. side sanitary MH, T.C., 4.9'
- D - Mag nail set in N. side power pole, 2' a.g., 37.6'

Boone County witness mark is a 3/8" diameter x 2' long rebar bearing a metal cap stamped "Boone County Witness Point."

The harrison monument was set in place of a harrison monument found. A BCS record of April 7-9, 1857 states "Reest. Set Rock 14 by 18 in." A BCS tie card dated February 26, 1969 states "no stone." A BCS tie card dated November 22, 2005 shows the corner as a harrison monument with no documentation about source. This corner was excavated on July 23, 2008. Prior to excavation, a harrison monument was visible at the surface. Excavation revealed clear evidence that the immediate vicinity of the corner was disturbed as part of the construction of a sanitary sewer and installation of the manhole 5 feet east of the harrison. No stone, nor any other monument was found. The old harrison was replaced with a new harrison in the same position. This corner was originally established as a wood post in 1819. There is no standard corner / closing corner offset as the federal notes for T 18 N, R 2 E state "intersect west line at post."



*Kenneth E. Hedge*  
Kenneth E. Hedge, County Surveyor

*James S. Swift*  
James S. Swift, IN LS 20200054

March 11, 2009

Worth Township

Section 13 T18N, R1E	Section 18 T18N, R2E
Section 24 T18N, R1E	Section 19 T18N, R2E



# SECTION CORNER RECORD

SE 300-650

## BOONE COUNTY SURVEYOR'S OFFICE

State Plane grid coordinates NAD83 (2011):

North: 1730503.47 East: 3159354.73 (U.S. survey feet)

Type of monument: Harrison, 4" disk 'Section Corner'

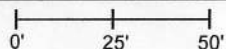
Depth: Flush with adjacent road surface

Indiana tie card references:

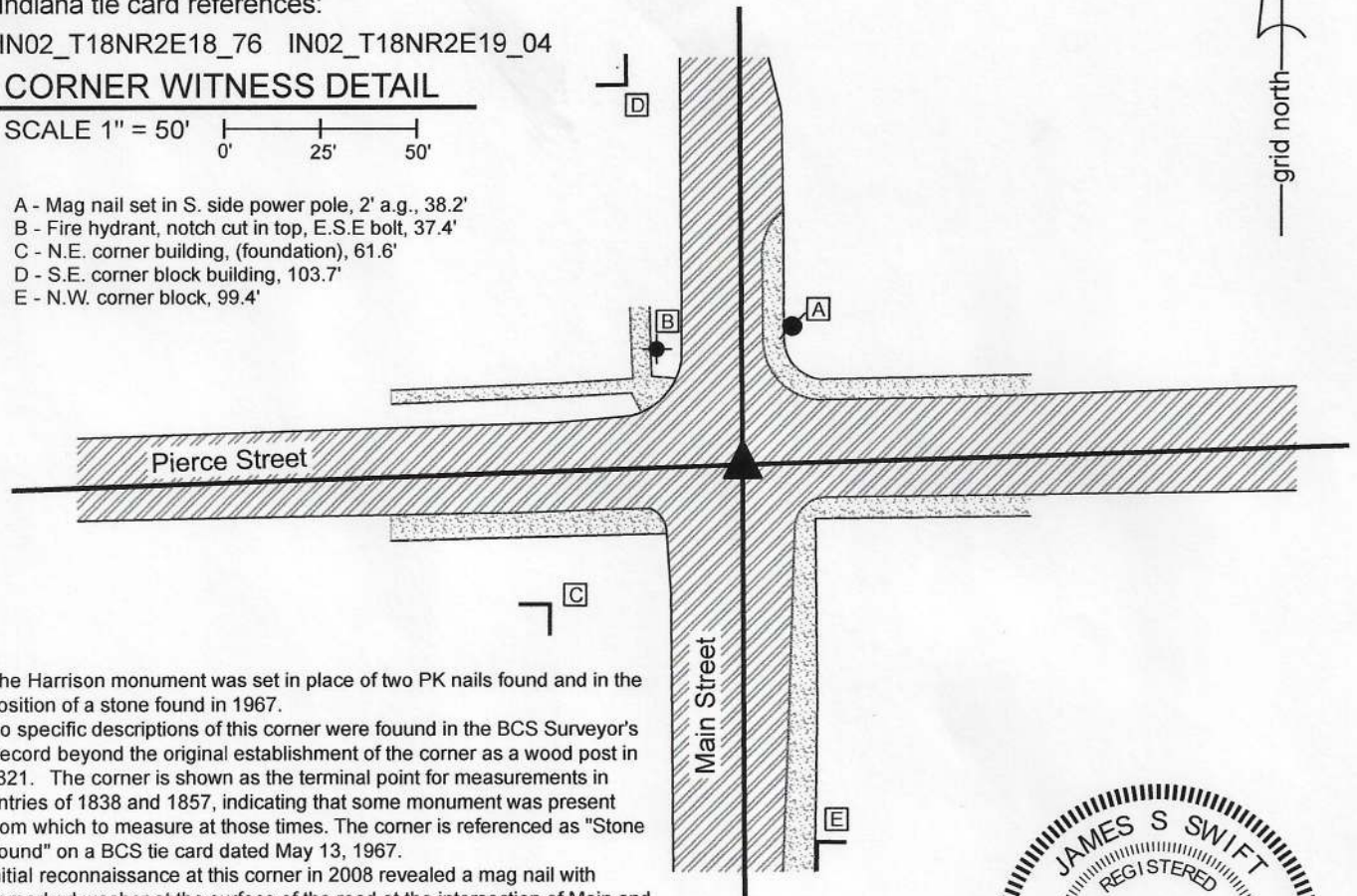
IN02\_T18NR2E18\_76 IN02\_T18NR2E19\_04

### CORNER WITNESS DETAIL

SCALE 1" = 50'



- A - Mag nail set in S. side power pole, 2' a.g., 38.2'
- B - Fire hydrant, notch cut in top, E.S.E bolt, 37.4'
- C - N.E. corner building, (foundation), 61.6'
- D - S.E. corner block building, 103.7'
- E - N.W. corner block, 99.4'



The Harrison monument was set in place of two PK nails found and in the position of a stone found in 1967.

No specific descriptions of this corner were found in the BCS Surveyor's Record beyond the original establishment of the corner as a wood post in 1821. The corner is shown as the terminal point for measurements in entries of 1838 and 1857, indicating that some monument was present from which to measure at those times. The corner is referenced as "Stone Found" on a BCS tie card dated May 13, 1967.

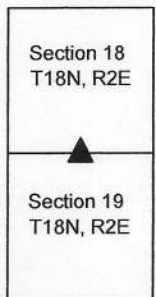
Initial reconnaissance at this corner in 2008 revealed a mag nail with unmarked washer at the surface of the road at the intersection of Main and Pierce Streets. Subsequent reconnaissance revealed that that particular monument was no longer present, but another mag nail was present almost seven feet west of the position of the nail found in 2008. This corner was studied carefully in the spring of 2020 at the request of several survey companies. Numerous small holes were visible in the pavement, indicating that survey field crews had been searching for a reliable monument at the corner. The position of the corner as documented in 1967 was reestablished using the one remaining distance tie from the 1967 survey and information shown on several surveys recorded in the Boone County Recorder's Office including surveys in Survey Book 15, page 63 and Survey Book 17, pages 60-61, respectively, both of which call for nails found marking the corner, the computed positions for which work with the 1967 distance tie. Excavation at this position revealed a P.K. Nail found at 5 inches below grade and another micro-P.K. Nail found at 8 inches below grade, slightly west of the upper nail. Both nails fit well with the computed position. Excavation to 16 inches and probing to 30 inches deep did not reveal the stone called in the 1967 record. It is believed that the stone was previously removed during excavation for a sewer project by the Town of Whitestown. The nail found at 5 inches deep fit precisely with the remaining distance tie from the 1967 tie card and was held as marking the position of the corner. Both nails were removed and a Harrison monument was set in the precise position of the nail found at 5 inches deep on April 8, 2020. The nail found in 2008, no longer present, had been 0.3 foot south and 1.2 feet east of the corner. The nail found in 2020, left in place, is 1.4 feet north and 5.5 feet west of the corner.



*Kenneth E. Hedge*  
 \_\_\_\_\_  
 Kenneth E. Hedge, County Surveyor

*James S. Swift*  
 \_\_\_\_\_  
 James S. Swift, IN LS 20200054  
 July 15, 2020

Worth Township



# SECTION CORNER RECORD

SE 300-700

## BOONE COUNTY SURVEYOR'S OFFICE

State Plane grid coordinates NAD83 (NSRS 2007):

North: 1730580.62 East: 3161992.08 (U.S. survey feet)

Type of monument: Harrison, 4" disk 'Section Corner'

Depth: One inch below adjacent road surface

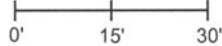
Indiana tie card references:

IN02\_T18NR2E17\_72 IN02\_T18NR2E18\_80

IN02\_T18NR2E19\_08 IN02\_T18NR2E20\_00

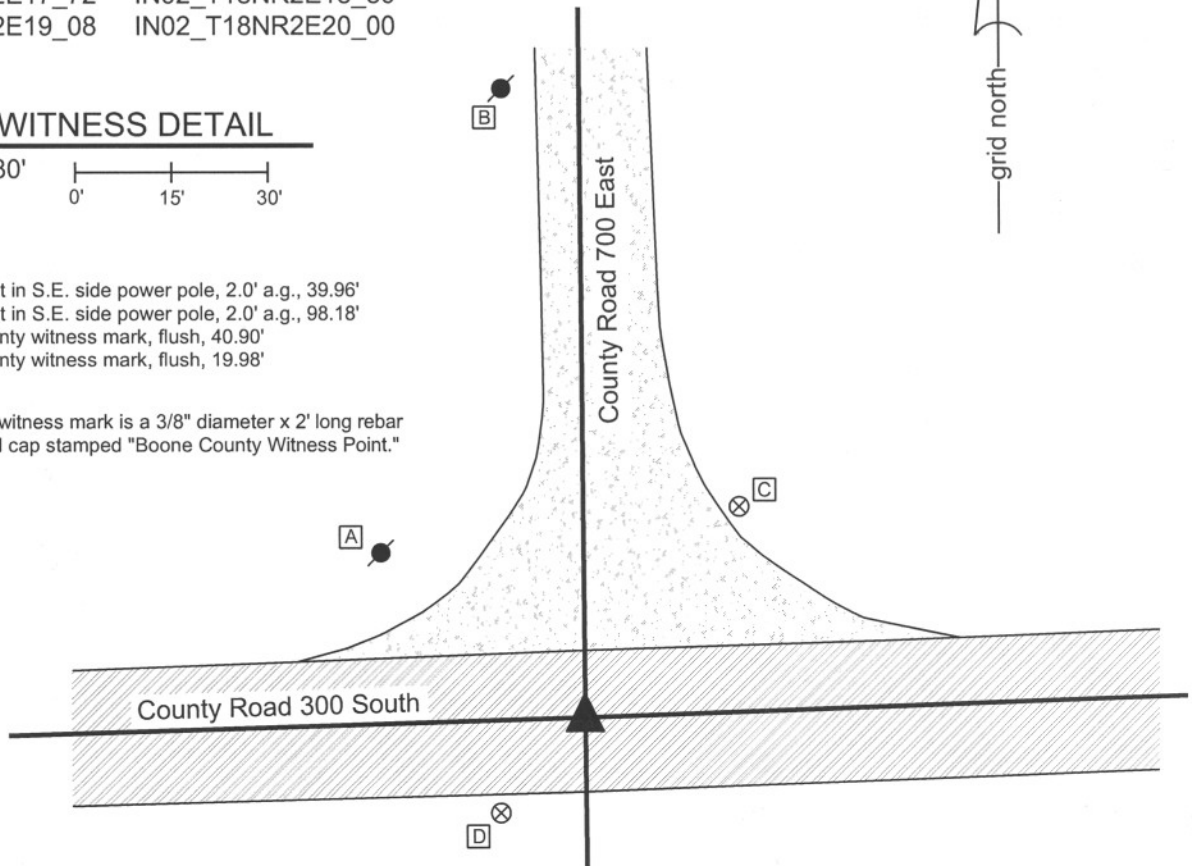
### CORNER WITNESS DETAIL

SCALE 1" = 30'



- A - Mag nail set in S.E. side power pole, 2.0' a.g., 39.96'
- B - Mag nail set in S.E. side power pole, 2.0' a.g., 98.18'
- C - Boone County witness mark, flush, 40.90'
- D - Boone County witness mark, flush, 19.98'

Boone County witness mark is a 3/8" diameter x 2' long rebar bearing a metal cap stamped "Boone County Witness Point."



The harrison monument was set in place of a railroad rail found.

A BCS record of August 17, 1869 calls for "a stone that was set." A BCS tie card dated May 3, 1967 states "stone found." This corner was excavated on July 15, 2008. Prior to excavation, a railroad spike was visible 2 inches deep in a hole in the asphalt. Excavation revealed a railroad rail 10 inches deep, 0.15 foot W and 0.05 foot S of the railroad spike. Both were removed. Further excavation yielded a small stone found at 24 inches deep. The stone measured 10 inches E-W by 6 inches N-S by 5 inches thick. The top, center of the stone was 0.3 foot south of the rail. It is not clear whether this stone is the the stone of record, nor is it clear whether this was the stone found in 1967. If is the stone of 1967, it is not known whether it was left undisturbed at the time of the setting of the rail. It is known that the common practice by field crews from this office during that time was to remove the stone entirely and set a rail in its place, when a stone was found. The most likely occurrence was exactly that: the stone was removed and replaced with the rail and that the small stone is not the true corner stone. No other monuments were found. The rail was accepted as providing the best evidence of the original location of the corner stone and the harrison monument was set in the position of the rail.

This corner was originally established as a wood post in July, 1821.



*Kenneth E. Hedge*  
 Kenneth E. Hedge, County Surveyor

*James S. Swift*  
 James S. Swift, IN LS 20200054

March 11, 2009

Worth Township

Section 18 T18N, R2E	Section 17 T18N, R2E
Section 19 T18N, R2E	Section 20 T18N, R2E