

SECTION CORNER RECORD

NW 300-1000

BOONE COUNTY SURVEYOR'S OFFICE

State Plane grid coordinates NAD83 (2011):

North: 1761447.50 East: 3071971.92 (U.S. survey feet)

Type of monument: Harrison, 4" disk 'Section Corner'

Depth: three inches above adjacent ground

Indiana tie card references:

IN02_T19NR2W16_72 IN02_T19NR2W17_80

IN02_T19NR2W20_08 IN02_T19NR2W21_00

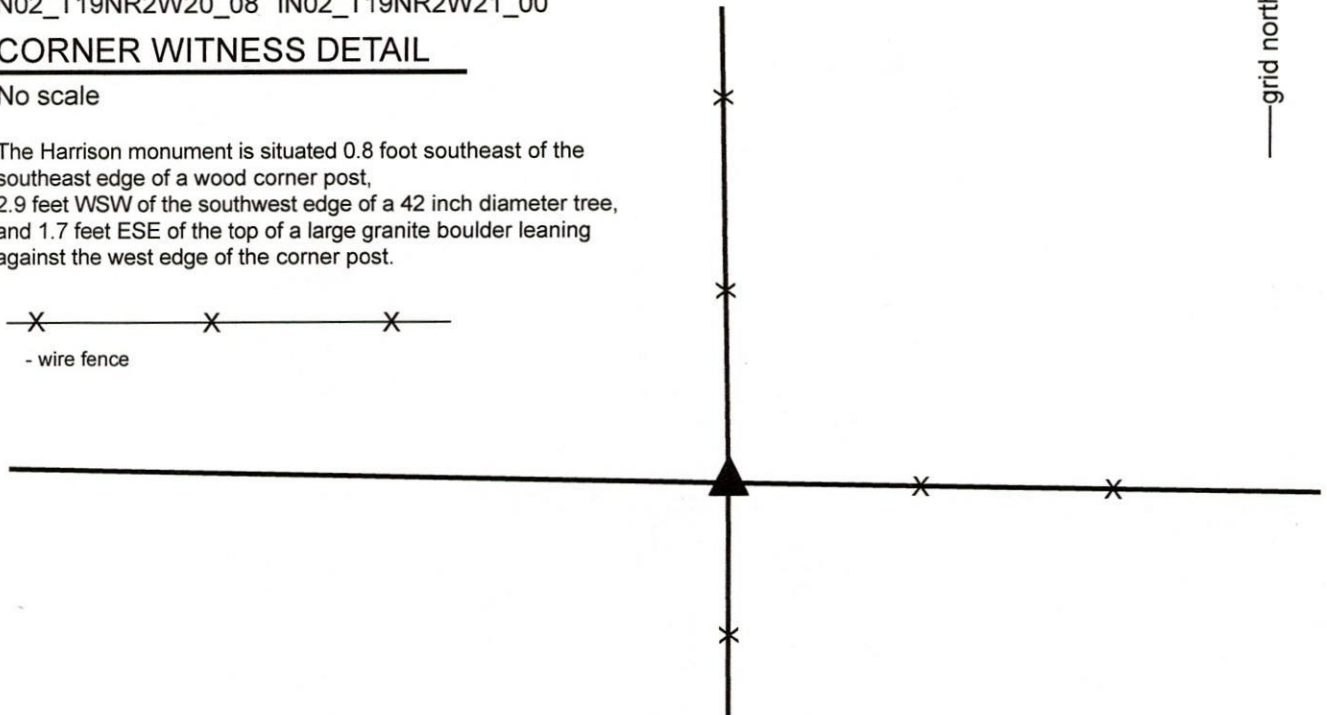
CORNER WITNESS DETAIL

No scale

The Harrison monument is situated 0.8 foot southeast of the southeast edge of a wood corner post, 2.9 feet WSW of the southwest edge of a 42 inch diameter tree, and 1.7 feet ESE of the top of a large granite boulder leaning against the west edge of the corner post.



- wire fence

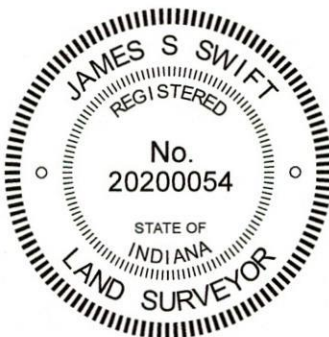


The Harrison monument was set over a stone found.

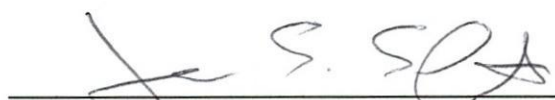
A BCS record of April 12, 1912 states, with respect to this corner, "Set Rock 12x16x9 +." No recent BCS tie cards were found referencing this corner. A survey recorded in Survey Book 19, page 91 in the Office of the Boone County Recorder shows the corner as a stone found.

This corner was excavated on March 13 & 17, 2020. Prior to excavation, a wood corner post at the intersection of standing fences to the north, south and east was found. A large granite boulder was found leaning against the west side of the post. Excavation revealed the stone described in the 1912 record at 10 inches below grade near the southeast edge of the post. The stone measured 12 inches N-S by 9 inches E-W by 17 inches tall, as measured on the southwest edge. A distinct etched + mark was visible on the top, center of the stone. This stone was vertical, oriented in cardinal directions and was separated by several inches from the post, hence it did not appear to be bracing the post. The stone was accepted as being the same monument described in the 1912 record and was held as marking the corner. The stone was left in place, the top 8 inches of the stone were encased in concrete and a Harrison monument was set directly over the etched mark on the top, center of the stone. It is believed that the stone called in the aforementioned survey is the large granite boulder found leaning against the west edge of the post.

This corner was originally established as a wood post in 1829.




Kenneth E. Hedge, County Surveyor


James S. Swift, IN LS 20200054
March 23, 2020

Jefferson Township

Section 17 T19N, R2W	Section 16 T19N, R2W
Section 20 T19N, R2W	Section 21 T19N, R2W

SECTION CORNER RECORD

NW 300-1050

BOONE COUNTY SURVEYOR'S OFFICE

State Plane grid coordinates NAD83 (2011):

North: 1761506.61 East: 3069315.97 (U.S. survey feet)

Type of monument: Harrison, 4" disk 'Section Corner'

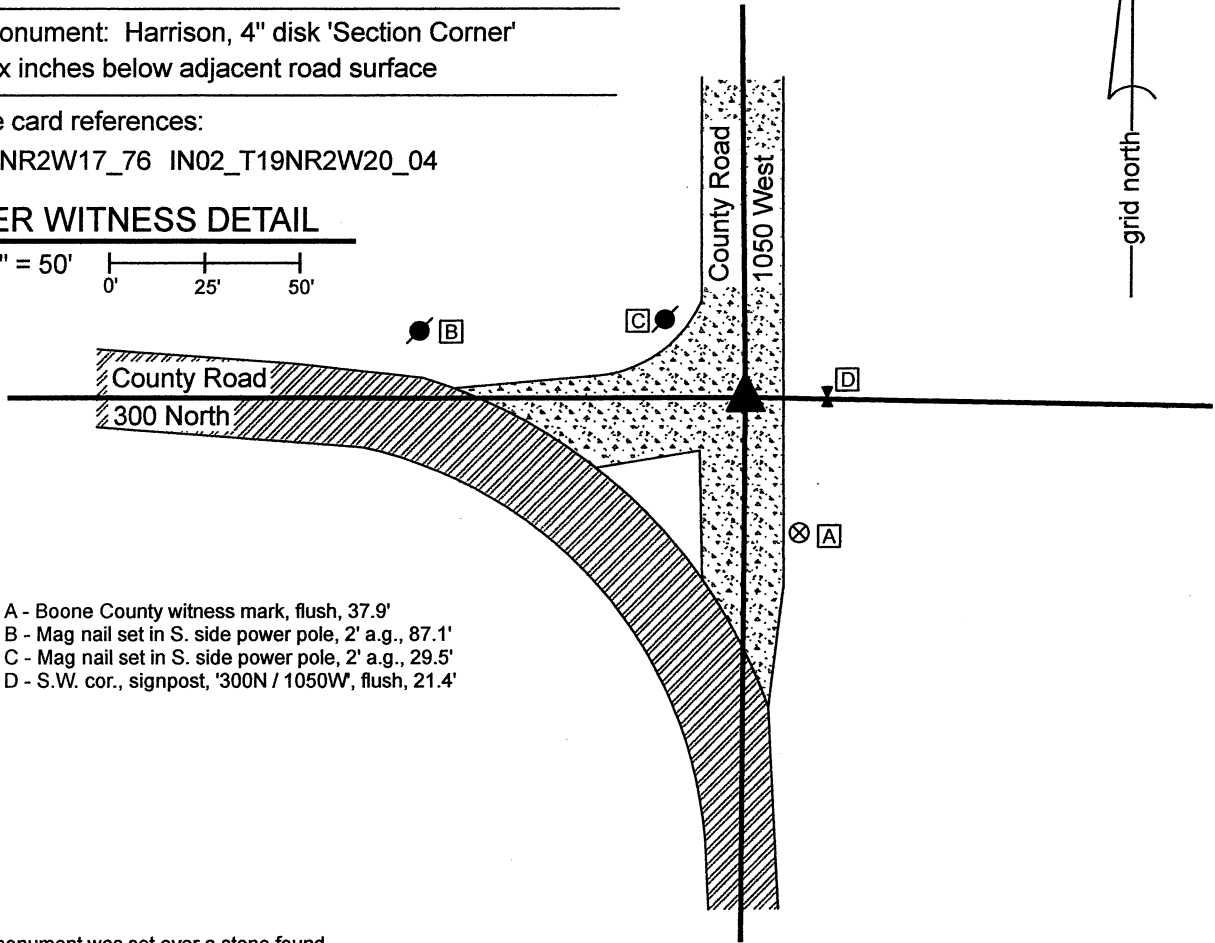
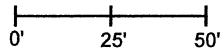
Depth: Six inches below adjacent road surface

Indiana tie card references:

IN02_T19NR2W17_76 IN02_T19NR2W20_04

CORNER WITNESS DETAIL

SCALE 1" = 50'



- A - Boone County witness mark, flush, 37.9'
- B - Mag nail set in S. side power pole, 2' a.g., 87.1'
- C - Mag nail set in S. side power pole, 2' a.g., 29.5'
- D - S.W. cor., signpost, '300N / 1050W', flush, 21.4'

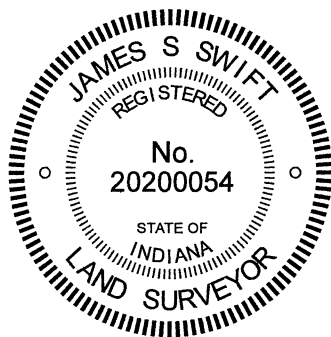
The Harrison monument was set over a stone found.

A BCS record dated November 2, 1869 states, with respect to this corner, "Reestablished by measure and by tracing the line c to C, b to B to the point where I set Rocks, two. One 18,8,5 1/2 marked +. Top Rock 13,7,6 marked +."

No recent BCS tie cards were found referencing this corner. A survey by Jerry L. Carter recorded as Instrument 0211466 in the Office of the Boone County Recorder shows the corner as a rebar found.

This corner was excavated on October 26, 2021. Prior to excavation, a 5/8-inch diameter rebar was found at 2 inches below grade at the intersection of the two county roads. The rebar is believed to be the same monument as was held by the said Carter survey. Excavation revealed a stone found at 12 inches below grade, slightly northwest of the rebar. The stone measured 14 inches tall by 8 inches N-S by 7 inches E-W, one inch larger in all dimensions than that reported for the top stone in the 1869 record. The stone was generally vertical, though appeared to be leaning toward the south. This stone had a distinct etched "+" mark on the east side, 2 inches below the top. The stone was removed and another stone was found directly below at 27 inches deep. The lower stone had a distinct etched "+" mark on the top. The top of the stone was measured to be 9 inches N-S by 5 inches E-W. The full dimensions of the stone were not confirmed. Given the clearly etched mark on the top of the stone and the position directly below the upper stone, this lower stone was accepted as being the bottom of the two stones referenced in the 1869 record. The two stones were accepted as marking the corner. The upper stone and rebar were both removed during excavation and a Harrison monument was set directly above the "+" mark on the lower stone. The rebar, removed during excavation, had been 0.4 foot south and 1.4 feet east of this position.

This corner was originally established as a wood post in 1829.



Kenneth E. Hedge

 Kenneth E. Hedge, County Surveyor

James S. Swift

 James S. Swift, IN LS 20200054
 November 1, 2021

Jefferson Township

Section 17
T19N, R2W

▲
 Section 20
T19N, R2W

SECTION CORNER RECORD

BOONE COUNTY SURVEYOR'S OFFICE

NW-300-1100

State Plane grid coordinates NAD83 (2011):
 North: 1761507.24 East: 3066665.22 (U.S. survey feet)

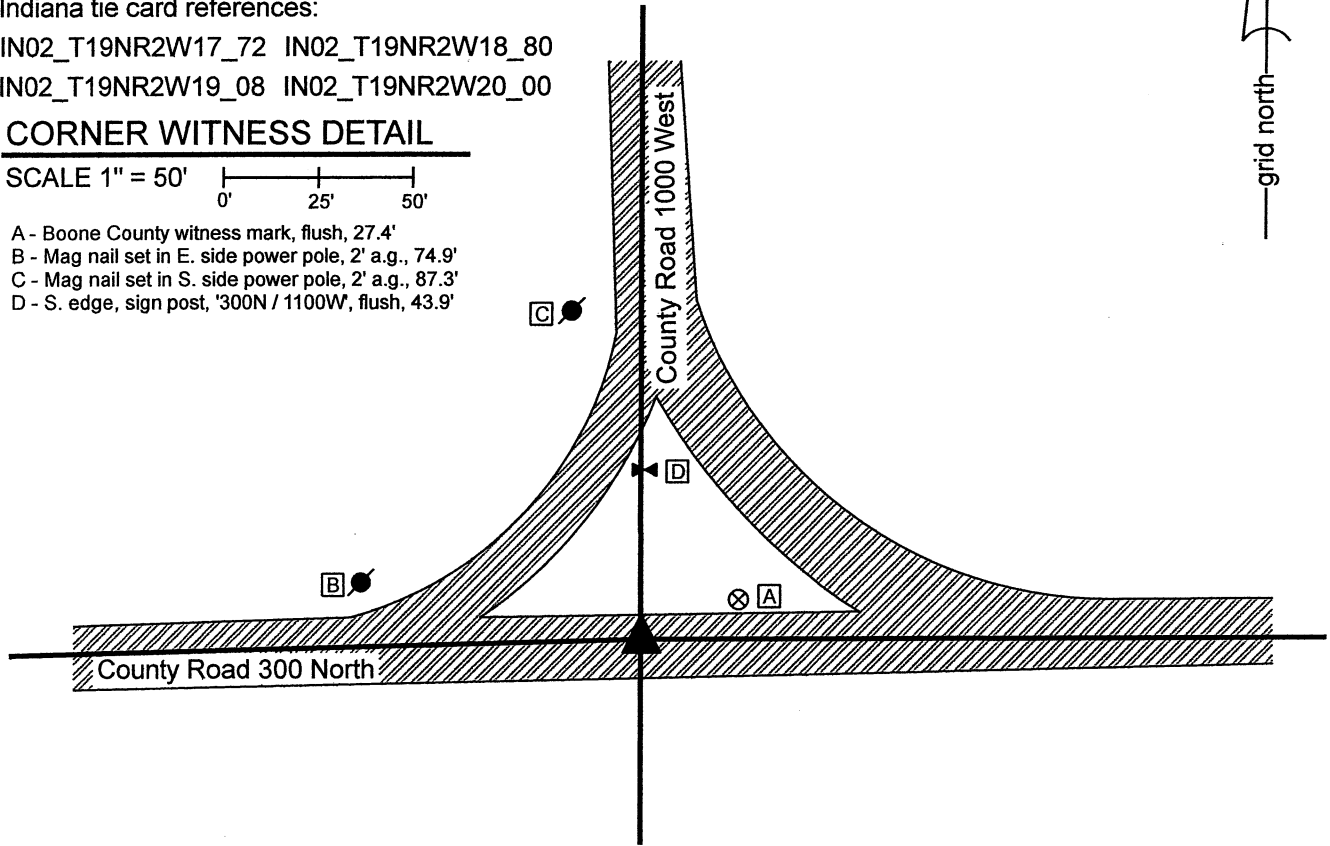
Type of monument: Harrison, 4" disk 'Section Corner'
 Depth: One inch below adjacent road surface

Indiana tie card references:
 IN02_T19NR2W17_72 IN02_T19NR2W18_80
 IN02_T19NR2W19_08 IN02_T19NR2W20_00

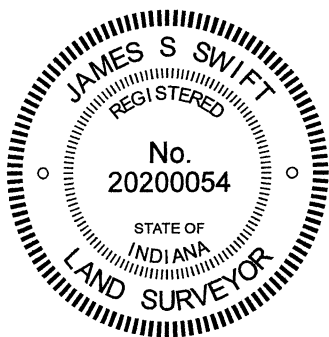
CORNER WITNESS DETAIL

SCALE 1" = 50'

- A - Boone County witness mark, flush, 27.4'
- B - Mag nail set in E. side power pole, 2' a.g., 74.9'
- C - Mag nail set in S. side power pole, 2' a.g., 87.3'
- D - S. edge, sign post, '300N / 1100W', flush, 43.9'



The Harrison monument was set in place of a rebar found. A BCS record of November 2, 1869 states, with respect to this corner, "Reestablished from stumps of both trees. Set Rock 12,15 marked +." No recent BCS tie cards were found referencing this corner. Excavation was performed at this corner on October 27, 2021. Prior to excavation, a 5/8-inch diameter rebar of unknown origin was found flush with the surface at the intersection of the two county roads. Excavation revealed that the rebar was 12 inches tall but did not reveal any further evidence of the corner. An area extending 2 feet north, 2.5 feet east, 3 feet south and 3.5 feet west of the rebar was excavated to approximately 22 inches deep. The bottom of the road bed was found at 20 inches deep. The position of the rebar fit well with other corners, including evidence of the corners one-half and one-quarter mile west, respectively, and also the relative positions of the corners one-half and one mile east, particularly with respect to the distances referenced in the 1869 record. The position of the rebar also fit well with local evidence of the corner, being at a reasonable approximation of the center of the intersection of the two county roads. The rebar was accepted as providing the best available evidence of the corner and was held as marking the corner. The rebar was removed during excavation and replaced with a Harrison monument in the same position on October 27, 2021. This corner was originally established as a wood post in 1829.



Kenneth E. Hedge
 Kenneth E. Hedge, County Surveyor

James S. Swift
 James S. Swift, IN LS 20200054
 November 1, 2021

Jefferson Township

Section 18 T19N, R2W	Section 17 T19N, R2W
Section 19 T19N, R2W	Section 20 T19N, R2W

SECTION CORNER RECORD

BOONE COUNTY SURVEYOR'S OFFICE

NW 350-1000

State Plane grid coordinates NAD83 (2011):
 North: 1764076.63 East: 3071927.16 (U.S. survey feet)

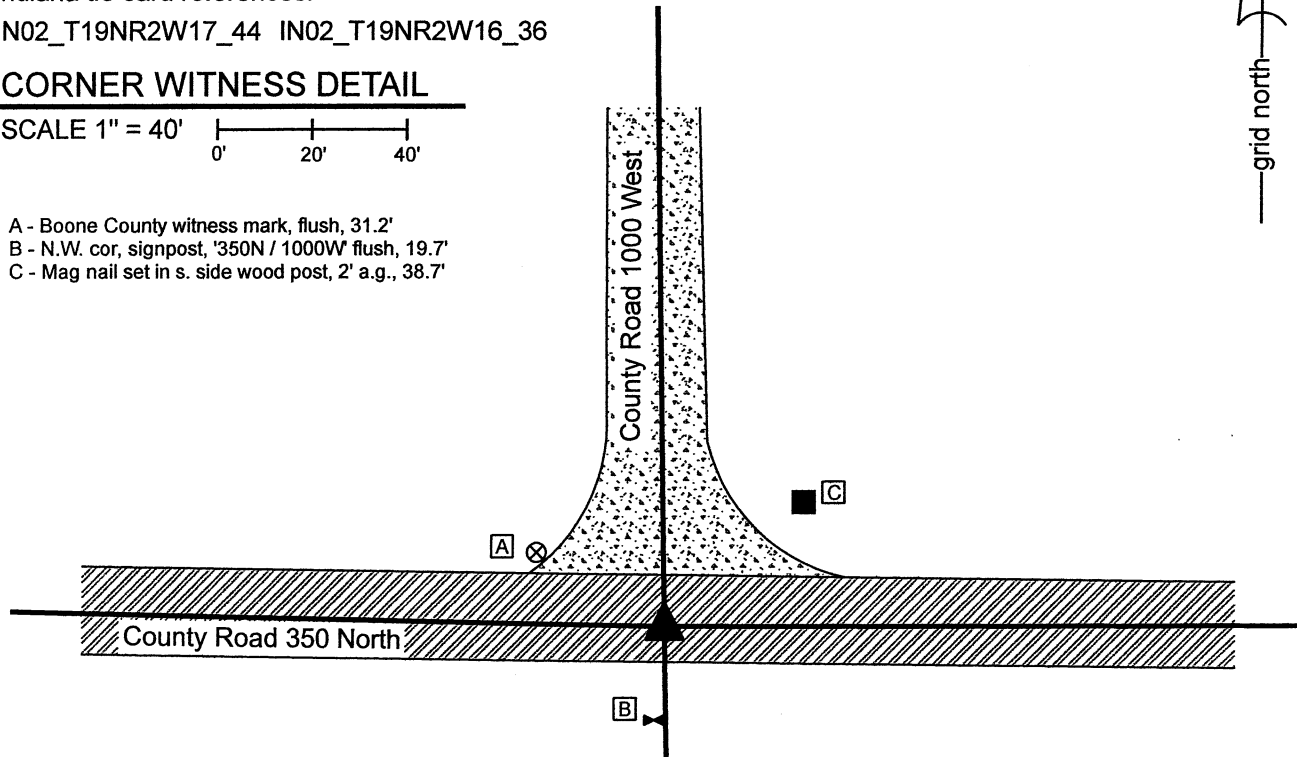
Type of monument: Harrison, 4" disk 'Section Corner'
 Depth: One inch below adjacent road surface

Indiana tie card references:
 IN02_T19NR2W17_44 IN02_T19NR2W16_36

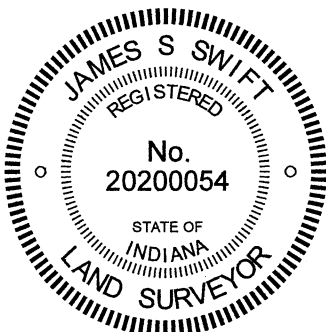
CORNER WITNESS DETAIL

SCALE 1" = 40'

- A - Boone County witness mark, flush, 31.2'
- B - N.W. cor, signpost, '350N / 1000W flush, 19.7'
- C - Mag nail set in s. side wood post, 2' a.g., 38.7'

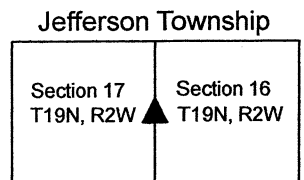


The Harrison monument was set over a stone found.
 A BCS record of December 27, 1862 to January 3, 1863 states, with respect to this corner, "Reestab. Set Rock 17,16,15 marked +." A subsequent record of February 27, 1863 references the previous record. A BCS tie card dated September 8, 1969 states "No stone. R/R Rail set."
 This corner was excavated on October 27, 2021. Prior to excavation, a railroad spike was found at 3 inches below grade at the intersection of the two county roads. Excavation revealed a vertical section of railroad rail found at 11 inches, slightly north of the railroad spike. Further excavation revealed a stone found at 10 inches below grade, south and east of the rail and spike. This stone was measured to be 9 inches tall by 7 inches E-W by 8 inches N-S and was observed to be situated entirely within the fill material of the road bed. The stone was removed and another, much larger stone was found at the bottom of the road bed at 21 inches deep. This stone had a distinct etched "+" mark on the top. With the top 5 inches of the stone exposed, it measured 13 inches N-S by 12 inches E-W and was clearly yet larger in all dimensions. The stone was fully embedded in the clay layer below the road bed, with the top of the stone being at the general level of the bottom of the road bed, though it appeared that some clay had been packed above the stone, perhaps when the upper stone was set above it. The position of the stone fit remarkably well with the relative positions of other monuments found marking proximate corners. Though the precise dimensions of the stone were not fully confirmed to match those reported in the 1863 record, it was clear in the field that this stone was set to mark the corner. The upper stone, railroad spike and railroad rail were all removed during excavation and a Harrison monument was set directly above the etched mark on the lower stone. The railroad spike had been 2.2 feet north and 0.7 foot west of this point. The railroad rail had been 2.3 feet north and 0.8 foot west of this point.
 This corner was originally established as a wood post in 1829.



Kenneth E. Hedge
 Kenneth E. Hedge, County Surveyor

James S. Swift
 James S. Swift, IN LS 20200054
 November 1, 2021



SECTION CORNER RECORD

NW 400-1000

BOONE COUNTY SURVEYOR'S OFFICE

State Plane grid coordinates NAD83 (2011):

North: 1766705.79 East: 3071885.80 (U.S. survey feet)

Type of monument: Harrison, 4" disk 'Section Corner'

Depth: Six inches below adjacent road surface

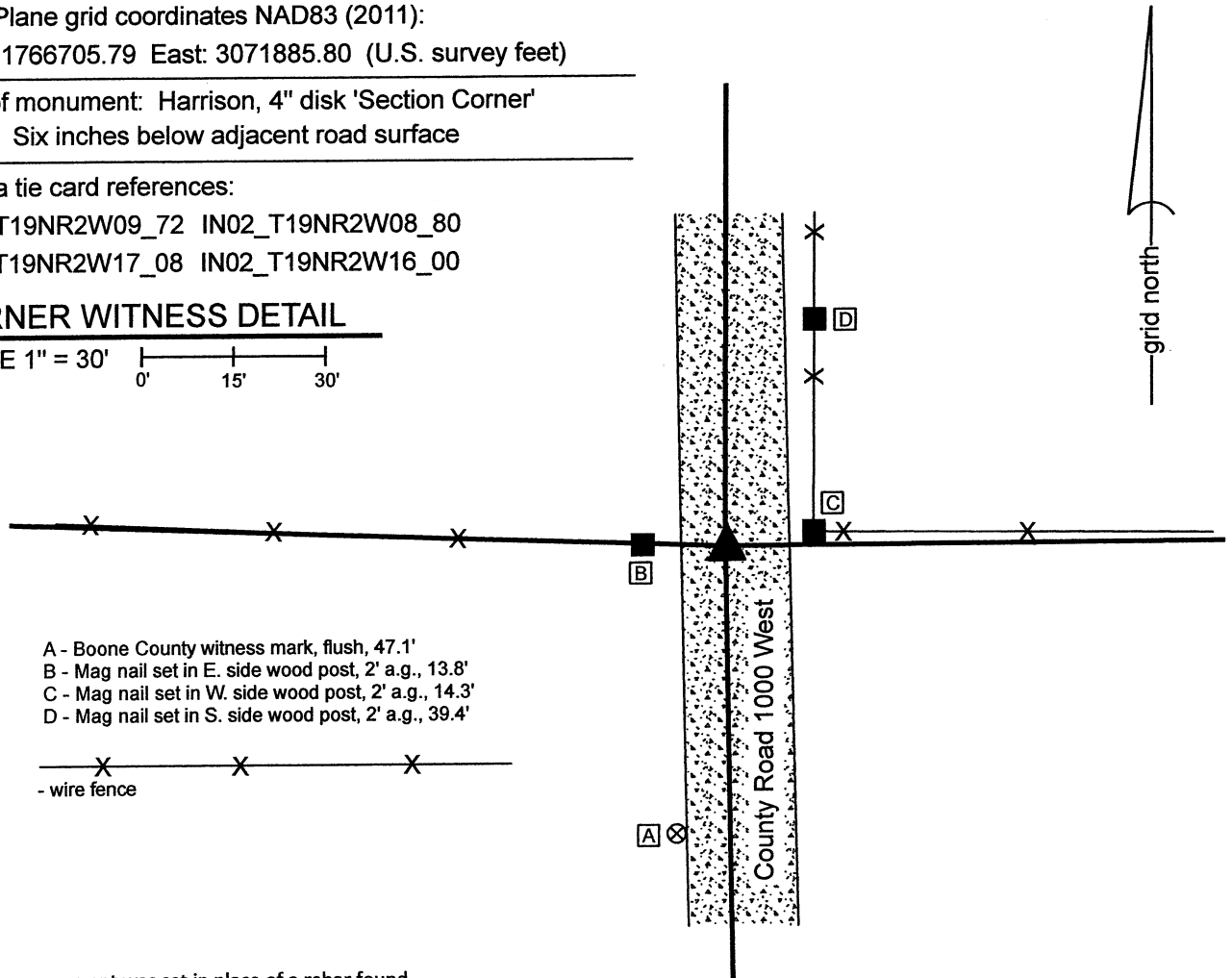
Indiana tie card references:

IN02_T19NR2W09_72 IN02_T19NR2W08_80

IN02_T19NR2W17_08 IN02_T19NR2W16_00

CORNER WITNESS DETAIL

SCALE 1" = 30'



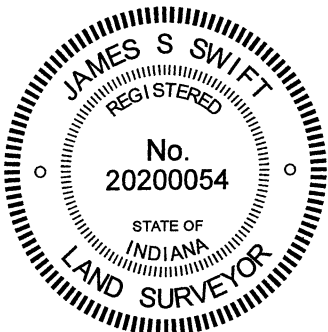
- A - Boone County witness mark, flush, 47.1'
- B - Mag nail set in E. side wood post, 2' a.g., 13.8'
- C - Mag nail set in W. side wood post, 2' a.g., 14.3'
- D - Mag nail set in S. side wood post, 2' a.g., 39.4'

- wire fence

The Harrison monument was set in place of a rebar found.

A BCS record of December 27, 1862 to January 3, 1863 states, with respect to this corner, "Reestablished from one tree. Set a Rock 23,17,12 marked +." A BCS tie card dated September 2, 1969 states "Stone Located. R/R Rail Set."

This corner was excavated on December 15, 2021. Prior to excavation, a rebar with orange plastic cap (markings illegible) was found at 2 inches deep in the center of the gravel roadway, opposite posts on both sides of the road and in-line with a fence to the east. Excavation did not reveal additional evidence of the corner. Per the 1969 tie card, it was expected that a section of railroad rail would be found, but no such monument was found. It was observed that the road bed in this immediate vicinity is only about 4 inches thick. The position of the found rebar fit with the local evidence of the corner and fit with the graphic representation of the corner on the 1969 tie card, being in the center of the road and in-line with the fences. The position of the rebar also fit with the distance ties to the posts on the east and west sides of the road, though it is noted that these posts appear that they may be newer than what was present in 1969. It is considered most likely that the stone called for in the 1863 record was removed in 1969 when the railroad rail was installed and that subsequently the rail was removed by road grading equipment. Surveys by Jerry L. Carter, LS S0350, recorded as Instrument 2003005080 and 2003005081 in the Office of the Boone County Recorder show the corner as a railroad rail. The position of the found rebar fits with the position of the rail shown on that survey, relative to other survey monuments shown thereon. The origin of the rebar is not known but it fits with the local evidence of the corner the 1969 tie card, and the 2003 surveys. The rebar was held as marking the corner and replaced with a Harrison monument. This corner was originally established as a wood post in 1829.



Kenneth E. Hedge
Kenneth E. Hedge, County Surveyor

James S. Swift
James S. Swift, IN LS 20200054
December 20, 2021

Sugar Creek
Township

Jefferson
Township

Section 8 T19N, R2W	Section 9 T19N, R2W
Section 17 T19N, R2W	Section 16 T19N, R2W