

SECTION CORNER RECORD

NE 300-100

BOONE COUNTY SURVEYOR'S OFFICE

State Plane grid coordinates NAD83 (CORS96):

North: 1761482.20 East: 3129821.45 (U.S. survey feet)

Type of monument: Harrison, 4" disk 'Section Corner'

Depth: One inch below adjacent road surface

Indiana tie card references:

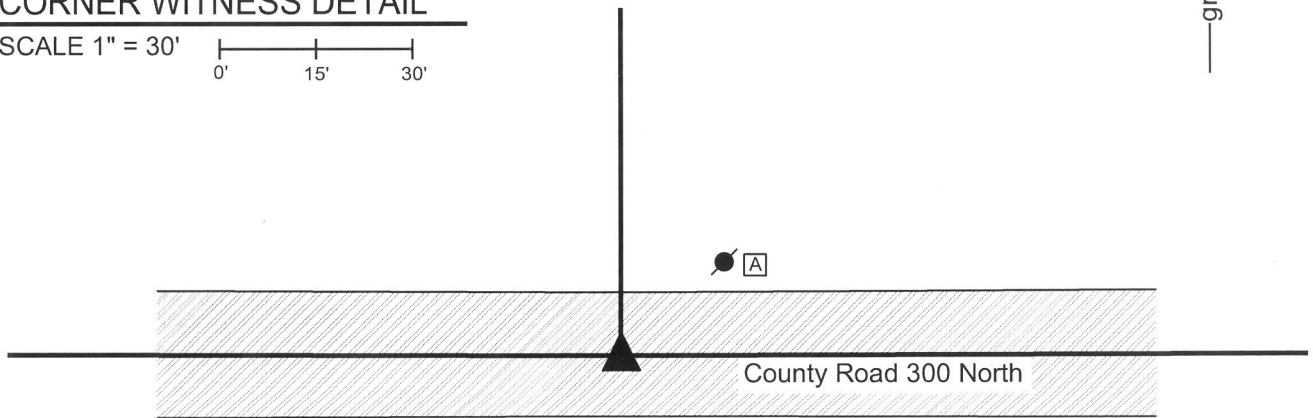
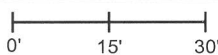
IN02_T19NR1E18_80 IN02_T19NR1E17_72

IN02_T19NR1E19_08 IN02_T19NR1E20_00



CORNER WITNESS DETAIL

SCALE 1" = 30'



- A - Mag nail set in S. side power pole, 1' a.g., 21.3'
- B - Boone County witness mark, flush, 20.2'
- C - Mag nail set in N. side power pole, 1' a.g., 21.7'
- D - Mag nail set in N.E. side power pole, 1' a.g. 63.4'

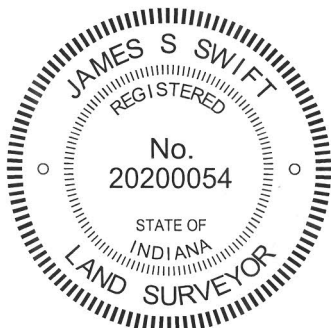
Boone County witness mark is a 3/8" diameter x 2' long rebar bearing a metal cap stamped "Boone County Witness Point."

The harrison monument was set in place of a vertical section of railroad rail found.

A BCS record of October 2, 3 & 5, 1857 states "Set Rock 9 by 11 in." A BCS tie card dated August 15, 1967 states "no stone." A BCS tie card dated July 28, 2005 shows the corner as a harrison monument with no documentation of source.

This corner was excavated on November 14, 2013. Prior to excavation, a harrison monument was found at 2 inches deep in a hole in the asphalt roadway. Excavation revealed a vertical section of railroad rail at 14 inches deep, 0.2 foot north and 0.05 foot west of the position of the harrison monument which had been removed during excavation. The top of the rail is at the depth of the bottom of the road bed. Excavation of an area extending 2.7 feet north, 4 feet east, 3 feet south and 2.5 feet west of the rail revealed no further evidence of the corner. It is most likely that the rail was set in association with the creation of the 1967 tie card, as it is known that it was a common practice for BCS survey crews working at that time to set rails at the purported location of the corner. The tie card shows the rail being in line with a corner post to the north. The rail was accepted as the best available evidence of the corner. A new harrison monument was set in the position of the rail.

This corner was originally established as a wood post in 1822.



Kenneth E. Hedge
Kenneth E. Hedge, County Surveyor

James S. Swift
James S. Swift, IN LS 20200054
February 5, 2015

Center Township

Section 18 T19N, R1E	Section 17 T19N, R1E
Section 19 T19N, R1E	Section 20 T19N, R1E

SECTION CORNER RECORD

NE 300-150

BOONE COUNTY SURVEYOR'S OFFICE

State Plane grid coordinates NAD83 (CORS96):

North: 1761488.86 East: 3132479.57 (U.S. survey feet)

Type of monument: Harrison, 4" disk 'Section Corner'

Depth: One inch below adjacent road surface

Indiana tie card references:

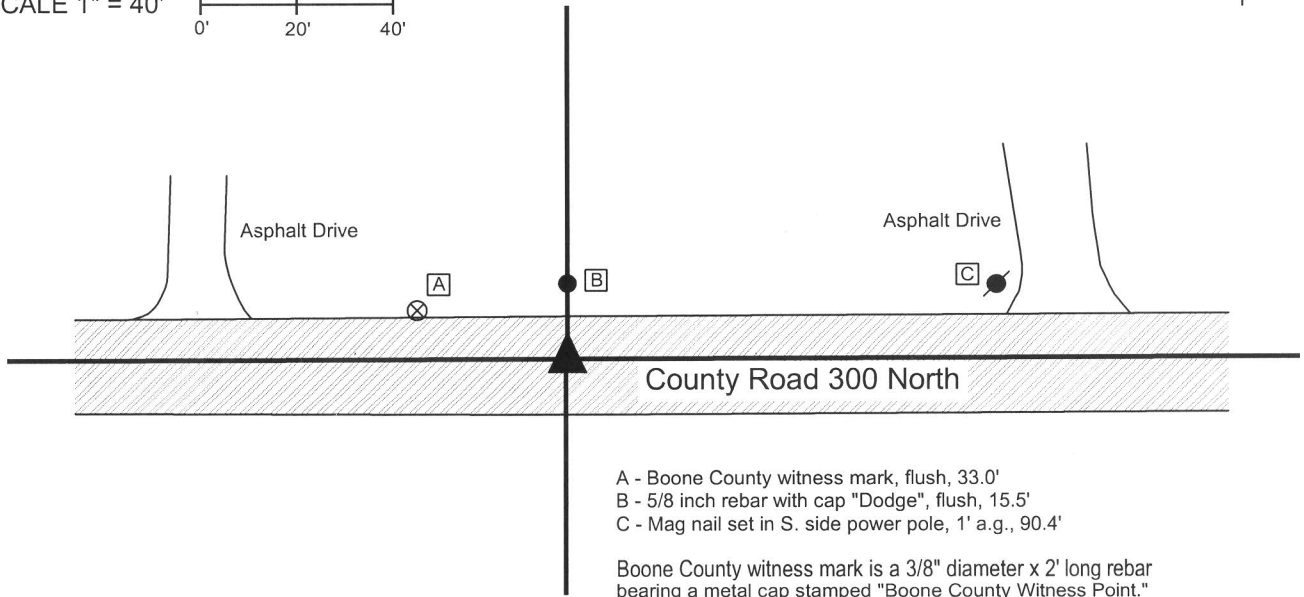
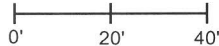
IN02_T19NR1E17_76

IN02_T19NR1E20_04



CORNER WITNESS DETAIL

SCALE 1" = 40'



- A - Boone County witness mark, flush, 33.0'
- B - 5/8 inch rebar with cap "Dodge", flush, 15.5'
- C - Mag nail set in S. side power pole, 1' a.g., 90.4'

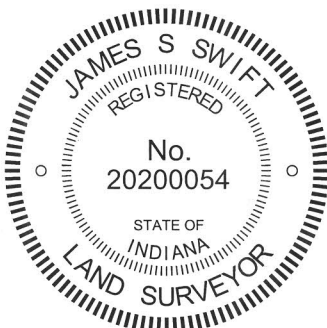
Boone County witness mark is a 3/8" diameter x 2' long rebar bearing a metal cap stamped "Boone County Witness Point."

The harrison monument was set in place of a vertical section of railroad rail found.


A BCS record February 9, 1872 states "Reestablished from Oak (green). Set rock marked +." A BCS tie card dated August 18, 1967 shows the corner but does not give information about what may have been found or set. A BCS tie card dated July 28, 2005 shows the corner as a harrison monument with no documentation of source.

This corner was excavated on November 15, 2013. Prior to excavation, a Harrison monument was found at 10 inches deep in a hole in the asphalt roadway. Excavation revealed a railroad rail found below and 0.3 of a foot east and 0.05 of a foot north of the harrison. Excavation of an area extending 2 feet north, 3 feet south, 2.5 feet east and 2.5 feet west of the harrison revealed no further evidence of the corner. It is most likely that the rail was set in association with the creation of the 1967 tie card, as it is known that it was a common practice for BCS survey crews working at that time to set rails at the purported location of the corner. The 1967 tie card shows the rail being south of and slightly west of a corner post on the north side of the road but the field notes from which that card were made show the corner directly south of the corner post. The rail was accepted as the best available evidence of the corner. A new harrison monument was set in the position of the rail.

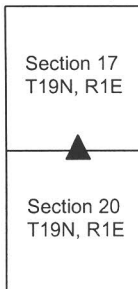
This corner was originally established as a wood post in 1822.




Kenneth E. Hedge, County Surveyor


James S. Swift, IN LS 20200054
February 5, 2015

Center Township



SECTION CORNER RECORD

NE 300-200

BOONE COUNTY SURVEYOR'S OFFICE

State Plane grid coordinates NAD83 (2011):

North: 1761494.82 East: 3135153.46 (U.S. survey feet)

Type of monument: Harrison, 4" disk 'Section Corner'

Depth: flush with adjacent ground

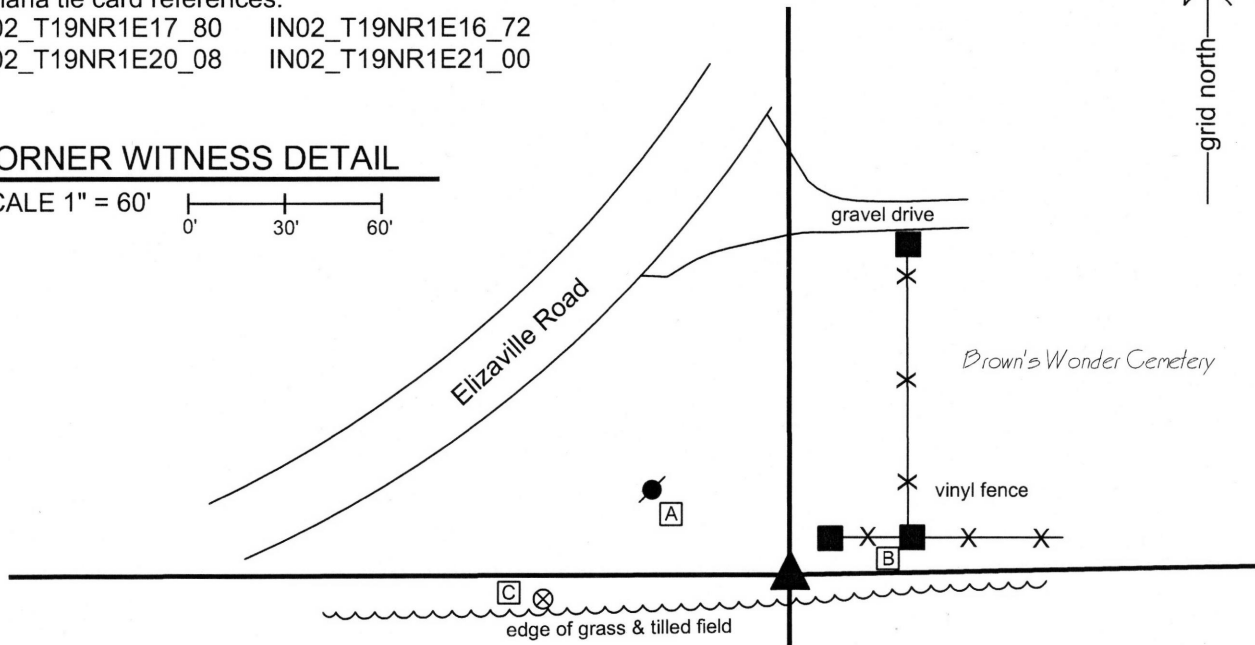
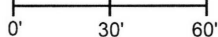
Indiana tie card references:

IN02_T19NR1E17_80 IN02_T19NR1E16_72

IN02_T19NR1E20_08 IN02_T19NR1E21_00

CORNER WITNESS DETAIL

SCALE 1" = 60'

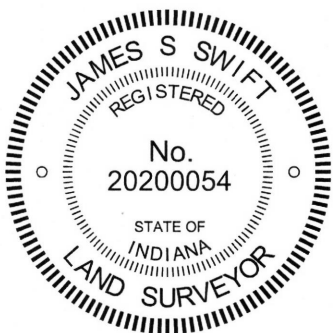


- A - Mag nail set in S.E. side power pole, 1' a.g., 48.3'
- B - S.W. edge, vinyl wrapped fence post, flush, 38.4'
- C - Boone County witness mark, flush, 77.9'

Boone County witness mark is a 3/8" diameter x 2' long rebar bearing a metal cap stamped "Boone County Witness Point."

The Harrison monument was set in place of a vertical section of railroad rail found.

No specific descriptions of this corner were found in the BCS Surveyors Record. A BCS tie card dated August 16, 1967 states "no stone." A BCS tie card dated July 28, 2005 shows the corner as a Harrison monument with no documentation of source. This corner was excavated on October 10, 2013. Prior to excavation a Harrison monument was found at 2 inches below the grade of the adjoining ground. Excavation revealed a vertical section of railroad rail found at 11 inches deep, directly below the Harrison. Further excavation of an area extending 4 feet in all cardinal directions from the found monuments revealed no further evidence of the corner. The clay layer below the top soil was found at 16 inches deep. Excavation was performed to a minimum depth of 18 inches. The rail and Harrison fit with local evidence in the form of aligning with the roadways to the north and west also being in line with the field division to the south. The two found monuments were accepted as representing the best available evidence of the corner. A new Harrison monument was set in place of the old Harrison and railroad rail. This corner was originally established as a wood post in 1822.



Kenneth E. Hedge
 Kenneth E. Hedge, County Surveyor

James S. Swift
 James S. Swift, IN LS 20200054
 March 24, 2016

Center Township

Section 17 T19N, R1E	Section 16 T19N, R1E
Section 20 T19N, R1E	Section 21 T19N, R1E

SECTION CORNER RECORD

NE 350-100

BOONE COUNTY SURVEYOR'S OFFICE

State Plane grid coordinates NAD83 (2011):

North: 1764131.14 East: 3129822.15 (U.S. survey feet)

Type of monument: Harrison, 4" disk 'Section Corner'

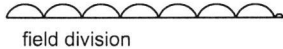
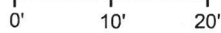
Depth: Two inches above the adjacent ground

Indiana tie card references:

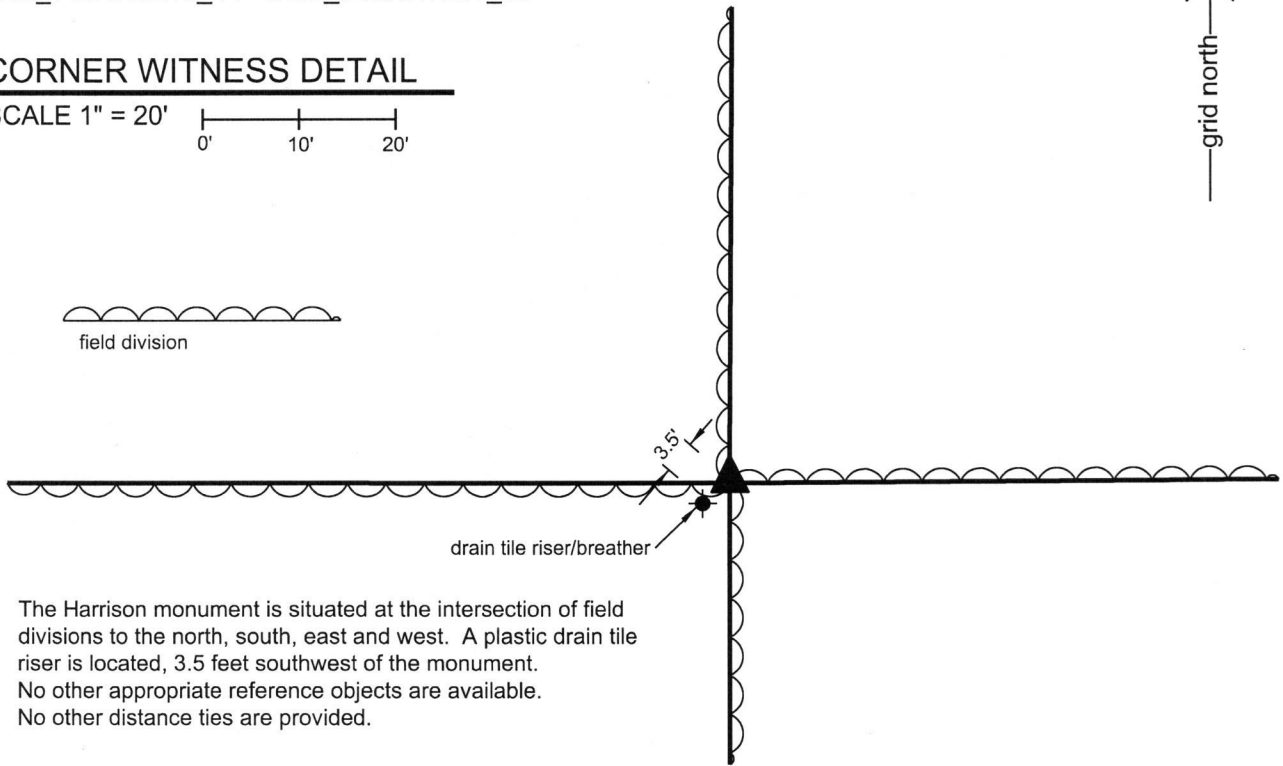
IN02_T19NR1E18_44 IN02_T19NR1E17_36

CORNER WITNESS DETAIL

SCALE 1" = 20'



field division



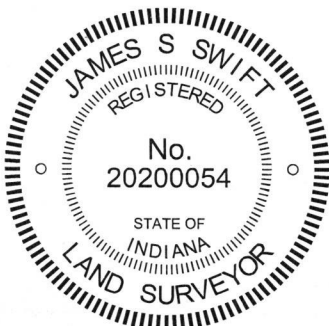
The Harrison monument is situated at the intersection of field divisions to the north, south, east and west. A plastic drain tile riser is located, 3.5 feet southwest of the monument. No other appropriate reference objects are available. No other distance ties are provided.

The Harrison monument was set in place of a Harrison monument which previously existed at the corner.

No specific descriptions of this corner were found in the BCS Surveyor's Record beyond the original establishment of the corner as a wood post in 1822. A BCS tie card dated September 30, 2005 shows the corner as a Harrison monument with no reference to source.

This corner was excavated on October 18, 2017. Prior to excavation, a steel t-post was found at the intersection of field divisions in all cardinal directions. Two stones were found on the surface adjacent to the t-post, both of which were sitting on top of the ground, not embedded in the dirt. The Harrison monument shown on the 2005 tie card was not found. A plastic, perforated riser/breather for a subterranean tile was observed adjacent to the corner. It is likely that the Harrison monument was removed during tile installation or repair. It also known that Harrison monuments set in such a situation in 2005 were most likely set directly in the dirt, with no concrete for stabilization. Hence, such a monument would have been easily removed during excavation of the adjacent tile.

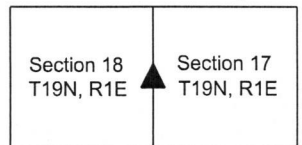
The position of the Harrison monument shown on the 2005 tie card fit well with the relative positions of proximate corners and fit well with calls for the half section line in the description of a property to the west on Elm Swamp Road, described in Instrument 201500007606 in the Office of the Boone County Recorder. The previous position for the corner was held and a Harrison monument was set in the position of the previous monument, as shown on the 2005 tie card. It is noted that approximately 0.3 foot uncertainty in all directions is associated with the replacement of the monument, per the state plane coordinates and with respect to the relative positions of other found monuments from 2005 and the coordinates reported for them.



Kenneth E. Hedge
Kenneth E. Hedge, County Surveyor

James S. Swift
James S. Swift, IN LS 20200054
October 24, 2017

Center Township



SECTION CORNER RECORD

NE 400-100

BOONE COUNTY SURVEYOR'S OFFICE

State Plane grid coordinates NAD83 (2011):

North: 1766779.94 East: 3129833.33 (U.S. survey feet)

Type of monument: Harrison, 4" disk 'Section Corner'

Depth: Flush with surrounding ground

Indiana tie card references:

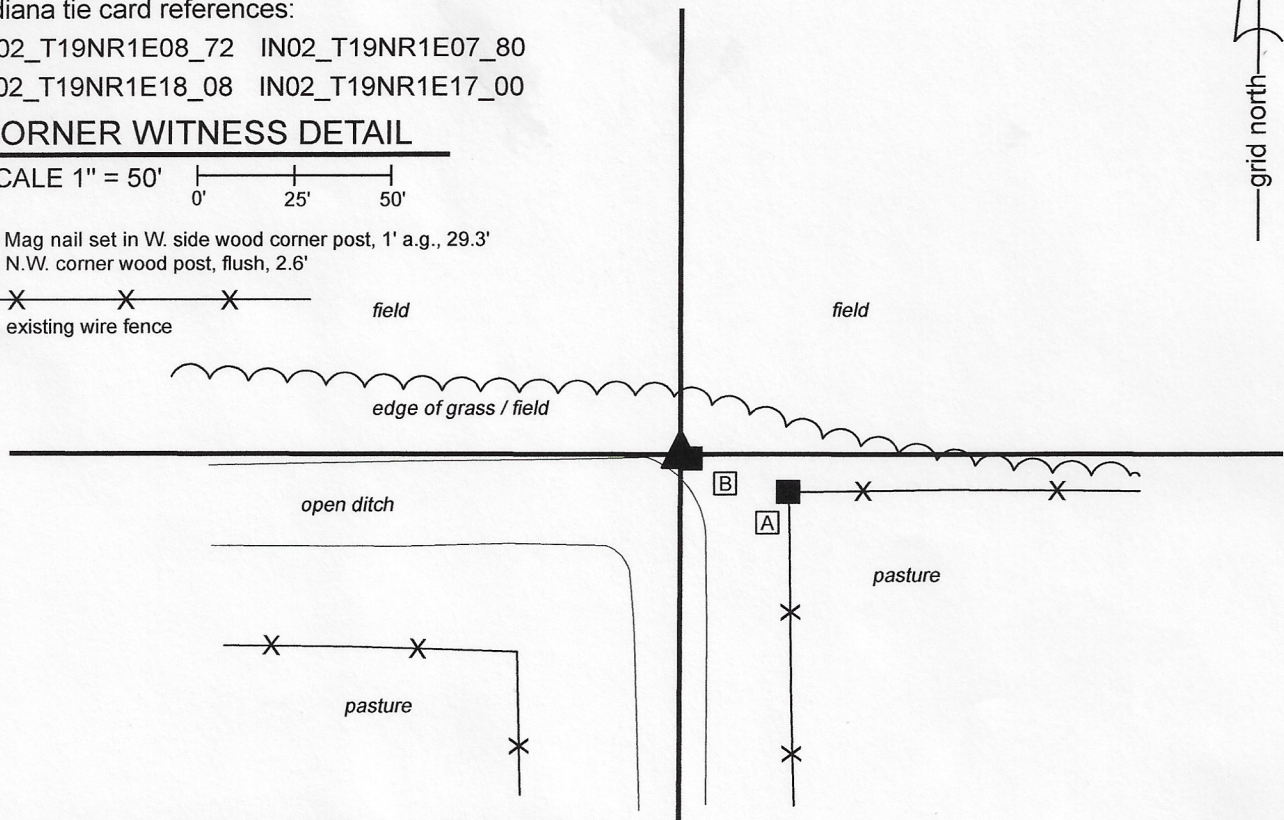
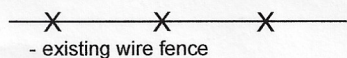
IN02_T19NR1E08_72 IN02_T19NR1E07_80

IN02_T19NR1E18_08 IN02_T19NR1E17_00

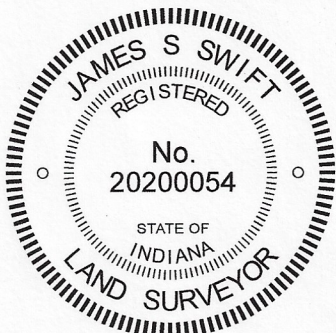
CORNER WITNESS DETAIL

SCALE 1" = 50'

- A - Mag nail set in W. side wood corner post, 1' a.g., 29.3'
- B - N.W. corner wood post, flush, 2.6'



The Harrison monument was set in place of a Harrison monument found.
 A BCS record dated March 9, 1886 states, with respect to this corner, "Reestablished by measurement (found point of stake) and set rock 20.14.12 + top - north 10 feet set wit 20.18.12."
 A BCS tie card dated September 28, 2005 calls the corner a Harrison monument.
 The Harrison monument was found in good condition, though not firmly attached to the ground, as shown on the 2005 tie card. The monument is 2.6 feet NW of the northwest edge of a wood corner post and 1 foot north of a rock found embedded in the soil. It is observed that this corner falls along the north edge of a deep open ditch. Clearly the immediate vicinity of the corner has been excavated and disturbed in the past. The wood post is not held as ancient evidence of the corner, as local landowner Tom Cunningham reports that the post was set in the 1960s following a tornado and has been doubted as representing the corner. The found stone is not of the same dimensions as called in the 1886 record and appears to have been haphazardly set. It does not appear to have been purposely set to mark the corner. No explanation is offered on the 2005 tie card for why the monument was set at its precise location, though it is noted that the position of the monument fits well with monumentation found marking property corners of properties along Elm Swamp Road, to the west, with respect to calls for the center of that road and the east line of the west half of the northeast quarter of section 18. The monument is situated slightly west of the southerly prolongation of fencing found providing evidence of the west line of the southwest quarter of section 8. Overall, up to 3 feet of uncertainty in all directions may be attributed to the position of the monument with respect to the found evidence. No evidence was found, however, which firmly disputes the position of the existing county monument so that position was held as the position of the corner. The existing Harrison was removed and replaced with a new Harrison, set firmly in concrete on May 13, 2020.
 This corner was originally established as a wood post in 1822.



Kenneth E. Hedge
 Kenneth E. Hedge, County Surveyor

James S. Swift
 James S. Swift, IN LS 20200054
 June 30, 2020

Clinton Township

Center Township

Section 7 T19N, R1E	Section 8 T19N, R1E
Section 18 T19N, R1E	Section 17 T19N, R1E

SECTION CORNER RECORD

NE 400-150

BOONE COUNTY SURVEYOR'S OFFICE

State Plane grid coordinates NAD83 (2011):

North: 1766776.46 East: 3132480.75 (U.S. survey feet)

Type of monument: Harrison, 4" disk 'Section Corner'

Depth: Flush with ground, adjacent to south edge of post

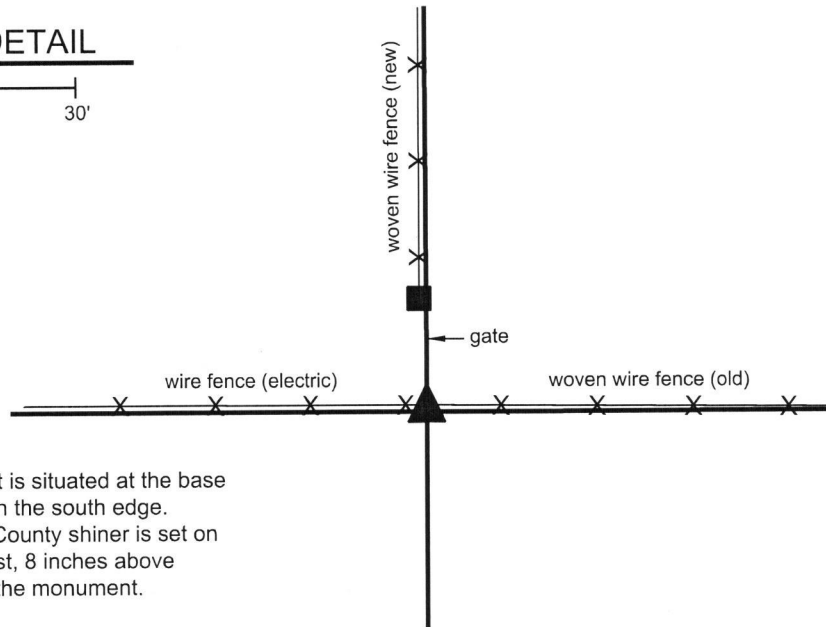
Indiana tie card references:

IN02_T19NR1E08_76 IN02_T19NR1E17_04

CORNER WITNESS DETAIL

SCALE 1" = 30'

0' 15' 30'



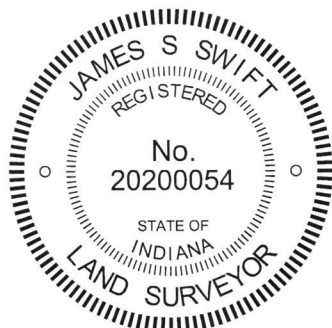
The Harrison monument is situated at the base of a wood corner post on the south edge. A mag nail with Boone County shiner is set on the south side of the post, 8 inches above grade, 0.4 foot north of the monument.

The Harrison monument was set in place of a stone found.

A BCS record of January 1, 1870 states, with respect to this corner, "Reestablished from Beech stake and a Beech stake, 16 in., N56E, 56 [links]." A BCS tie card dated September 29, 2005 shows the corner as a Harrison monument with no documentation of source. The tie card shows the corner 1.2 feet south of a wood corner post and shows the east-west section line as being south of the existing east-west fence. No information is provided as to why the corner was set south of the post.

This corner was excavated on October 17, 2017. Prior to excavation, an ancient wood post was found with ancient fencing to the east, modern electric fencing to the west and a gate to the north, north of which is newer fence, slightly west of the post. Per the 2005 tie card, a Harrison monument was found south of the post. As found, the monument appeared disturbed, with the top leaning toward the north. The monument evidently had been set directly in the dirt and did not appear to be stable as found. In the field, on first inspection, it was not clear why the monument was so far south of the post. Excavation around the post revealed a stone found at 8 inches deep at the south edge of the post, slightly northeast of the Harrison, partially between the monument and the post. The stone appeared to be vertical with a clear and distinct high point. The stone was measured to be 9 1/2 inches tall by 7 inches N-S by 5 inches E-W. The stone did not appear to be acting as a brace rock and also did not appear to have been haphazardly placed. The stone appeared in the field to have been purposely set as a corner marker. It was also evident in the field why the previous Harrison monument had been set so far south of the post, as it appeared that the monument was set in such a position to avoid the adjacent stone, which would have been in the way of a casual placement of a monument. The Harrison, being loosely set in the ground, was removed. The stone was accepted as the best evidence of the corner and was held as marking the corner. A new Harrison monument was set in place of the stone, fully embedded in concrete and in a stable condition. The new monument is 0.3 foot north and 0.4 foot east of the top of the previous monument as found. It is noted that the previous monument was leaning to the north as found.

This corner was originally established as a wood post in 1822.



Kenneth E. Hedge
Kenneth E. Hedge, County Surveyor

James S. Swift
James S. Swift, IN LS 20200054
October 24, 2017

Clinton Township

Section 8
T19N, R1E

Center Township

Section 17
T19N, R1E

SECTION CORNER RECORD

NE 400-200

BOONE COUNTY SURVEYOR'S OFFICE

State Plane grid coordinates NAD83 (2011):

North: 1766782.46 East: 3135113.83 (U.S. survey feet)

Type of monument: Harrison, 4" disk 'Section Corner'

Depth: Two inches above adjacent ground

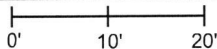
Indiana tie card references:

IN02_T19NR1E08_80 IN02_T19NR1E09_72

IN02_T19NR1E17_08 IN02_T19NR1E16_00

CORNER WITNESS DETAIL

SCALE 1" = 20'



orange plastic riser/breather for subterranean tile



An orange plastic perforated riser/breather for a subterranean tile is located 11.4 feet NNW of the monument. No other appropriate object are available to provide reliable distance ties.

The Harrison monument was set in place of a stone found.

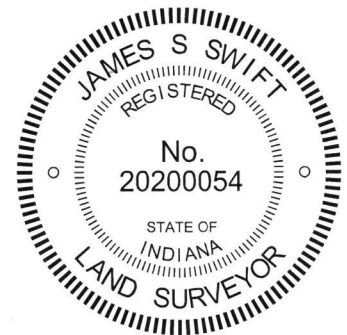
A BCS record dated April 22, 1880 states, with respect to this corner, "Reestablished. Tree has fallen but is here and retains mark. Set rock 15.9.9 + on top."

A BCS tie card dated August 16, 2005 shows the corner as a Harrison monument with no documentation of source. The tie card shows the Harrison as being set between a post and a N-S fence.

On July 18, 2014 excavators working for Ramsey Farm Drainage contacted the Boone County Surveyor's Office with information that they had just discovered a Harrison monument (bare with no concrete) amidst the material which had just been excavated and that they had hit a substantial sized rock. They recognized the monument as a survey marker and questioned whether the found rock was a corner stone marking a survey corner. I, James Swift, PS, went to the scene where I confirmed that the iron monument was indeed a Harrison monument and that the found stone which was exposed on the top and along its west side did appear to be a corner stone. The stone was not positively confirmed to match the dimensions of the 1880 stone. The position of the stone was determined with GPS equipment and the excavators continued their work which included removing the stone and installing a subterranean tile. The found stone was accepted as providing the best evidence of the corner.

On October 27, 2017 the stone was replaced with a new Harrison monument, set in durable fashion, in the same position. As noted, the 2005 Harrison had already been removed from the ground when the excavators noticed it, hence the position of the monument is reported per the coordinates on the tie sheet, with approximately 0.3 foot uncertainty in all directions. Per those coordinates, the new Harrison, set in place of the stone, is 0.5 foot south and 1.6 feet east of the position of the previous Harrison. Though the fencing has been removed in the immediate vicinity of the corner, the new monument is approximately 0.5 foot east of the longer N-S fence, as it yet exists north and south of the corner. The previous Harrison had been approximately 1 foot west of the fence.

This corner was originally established as a wood post in 1822.




 Kenneth E. Hedge, County Surveyor


 James S. Swift, IN LS 20200054
 November 15, 2017

Clinton Township

Section 8
T19N, R1E

Section 9
T19N, R1E

Center Township

Section 17
T19N, R1E

Section 16
T19N, R1E