

# SECTION CORNER RECORD

SW 200-1000

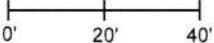
## BOONE COUNTY SURVEYOR'S OFFICE

State Plane grid coordinates NAD83 (2011):  
North: 1734704.74 East: 3072003.61 (U.S. survey feet)

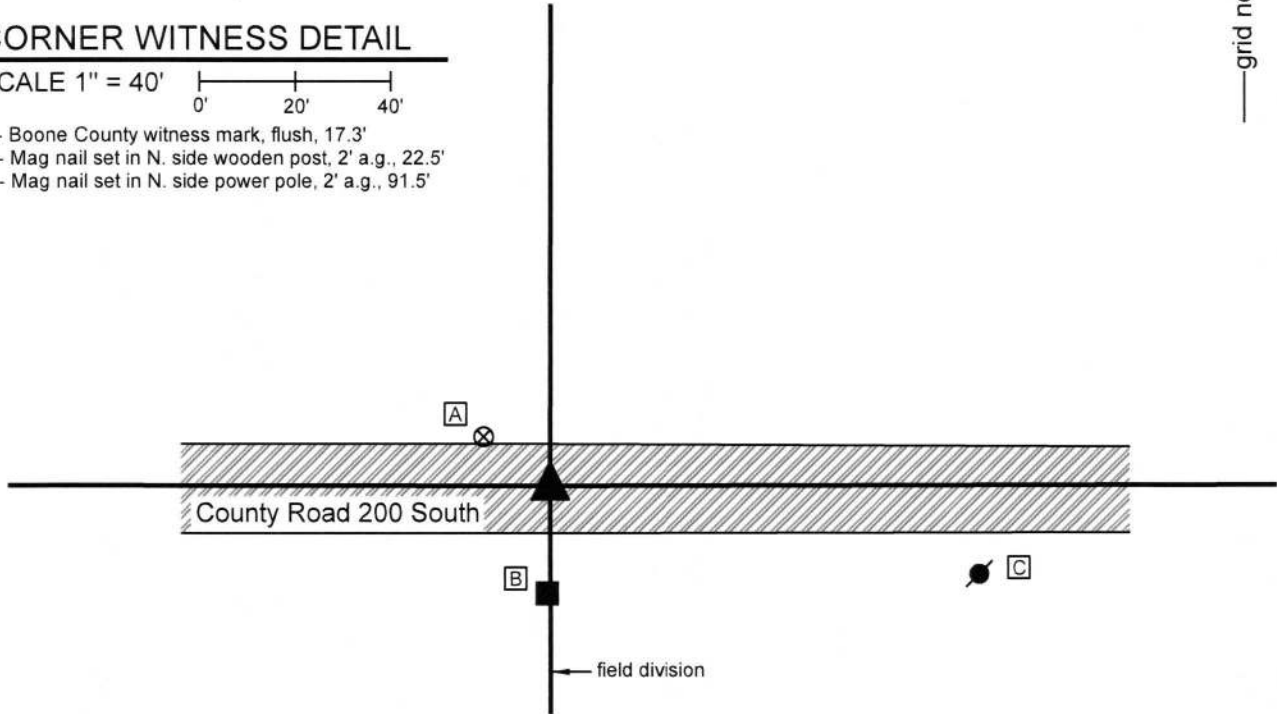
Type of monument: Harrison, 4" disk 'Section Corner'  
Depth: One inch below adjacent road surface

Indiana tie card references:  
IN02\_T18NR2W08\_80 IN02\_T18NR2W09\_72  
IN02\_T18NR2W17\_08 IN02\_T18NR2W16\_00

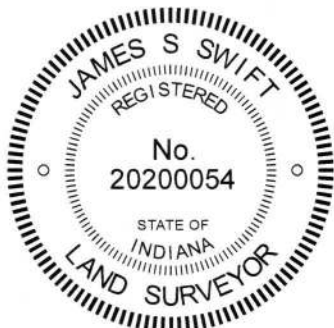
### CORNER WITNESS DETAIL

SCALE 1" = 40' 

- A - Boone County witness mark, flush, 17.3'
- B - Mag nail set in N. side wooden post, 2' a.g., 22.5'
- C - Mag nail set in N. side power pole, 2' a.g., 91.5'




The Harrison monument was set over a stone found.  
A BCS record of April 18-19, 1870 states, with respect to this corner, "Reest. Set two rocks. One 7.5 12. 4 marked +. Top rock 11.8.9 marked +." A BCS tie card dated August 23, 1967 states "no stone."  
This corner was excavated on September 17, 2019. Prior to excavation, a mag nail was found at the surface of the road, slightly east of two posts on the south side of the road. Excavation revealed a vertical section of railroad rail found at 11 inches deep, directly below the nail. Further excavation revealed a stone found at 24 inches deep, west of the nail and rail. The stone appeared to be leaning toward the east, as found. As stood vertically, the stone measured 7 inches E-W by 6 inches N-S by 10 inches tall, 1 inch smaller in each dimension than what was reported in the 1870 record. No other stone was found below this stone, though fragments of a wood stake were found along the east edge of the stone. The found stone fit better with the posts on the south side of the road (one ancient, one newer) than did the rail. No explanation is offered as to why the lower stone was not found. The found stone was slightly smaller than called in the 1870 record though of the same proportions. The stone was accepted as being the best available evidence of the corner. The stone was left in place, as stood vertically, and a Harrison monument was set directly over the top, center of the stone. The nail and rail, both removed during excavation, had been 1.7 foot east and 0.7 foot south of the stone.  
This corner was originally established as a wood post in 1820.



  
Kenneth E. Hedge, County Surveyor

Jefferson Township

  
James S. Swift, IN LS 20200054  
September 25, 2019

Jackson Township

|                         |                         |
|-------------------------|-------------------------|
| Section 8<br>T18N, R2W  | Section 9<br>T18N, R2W  |
| Section 17<br>T18N, R2W | Section 16<br>T18N, R2W |

# SECTION CORNER RECORD

SW 200-1050

## BOONE COUNTY SURVEYOR'S OFFICE

State Plane grid coordinates NAD83 (2011):

North: 1734707.77 East: 3069356.96 (U.S. survey feet)

Type of monument: Harrison, 4" disk 'Section Corner'

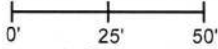
Depth: One inch below adjacent road surface

Indiana tie card references:

IN02\_T18NR2W08\_76 IN02\_T18NR2W17\_04

### CORNER WITNESS DETAIL

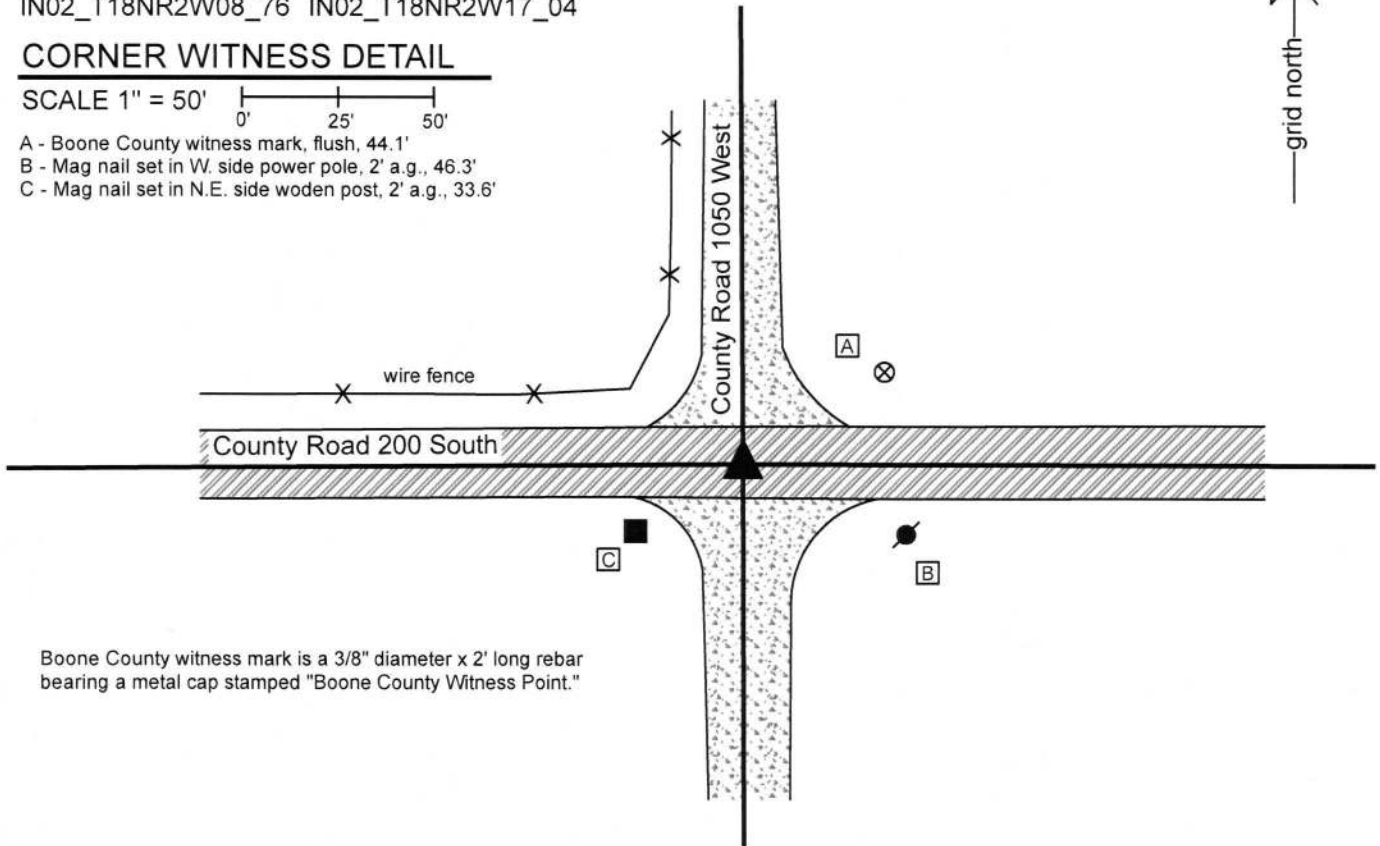
SCALE 1" = 50'



A - Boone County witness mark, flush, 44.1'

B - Mag nail set in W. side power pole, 2' a.g., 46.3'

C - Mag nail set in N.E. side woden post, 2' a.g., 33.6'



Boone County witness mark is a 3/8" diameter x 2' long rebar bearing a metal cap stamped "Boone County Witness Point."

The Harrison monument was set over a stone found.

A BCS Record of October 5-6, 1897 states, with respect to this orner, "Found rock with old stake beneath." No recent BCS tie cards were found referencing this corner.

Excavation was performed at this corner on September 18, 2019. Prior to excavation, a Mag Nail was found at the surface of the road at the intersection of the centers of the county roads in all four cardinal directions. Excavation revealed no metal monument found beneath the nail, though excavation did reveal a stone found at 20 inches deep, generally below the position of the nail. With the top four inches of the stone exposed, it measured 8 inches N-S by 9 inches E-W and was clearly larger in those dimensions and clearly of substantial size in the vertical dimension. An etched "+" mark was clearly visible on the top of the stone, slightly south of the top, high point. The stone was embedded in the clay layer below the road with the top of the stone coincident with the bottom of the road bed. The stone was held as marking the corner and a Harrison monument was set over the top, high point of the stone, slightly north of the etched "+" mark. The mag nail, removed during excavation, had been 0.4 foot north of the point held as the corner.

This corner was originally established as a wood post in 1820.



*Kenneth E. Hedge*  
Kenneth E. Hedge, County Surveyor

*James S. Swift*  
James S. Swift, IN LS 20200054  
September 25, 2019

Jefferson  
Township

Section 8  
T18N, R2W

Jackson  
Township

Section 17  
T18N, R2W

# SECTION CORNER RECORD

# SW 200-1100

## BOONE COUNTY SURVEYOR'S OFFICE

State Plane grid coordinates NAD83 (2011):

North: 1734691.23 East: 3066709.26 (U.S. survey feet)

Type of monument: Harrison, 4" disk 'Section Corner'

Depth: One inch below adjacent road surface

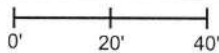
Indiana tie card references:

IN02\_T18NR2W07\_80 IN02\_T18NR2W08\_72

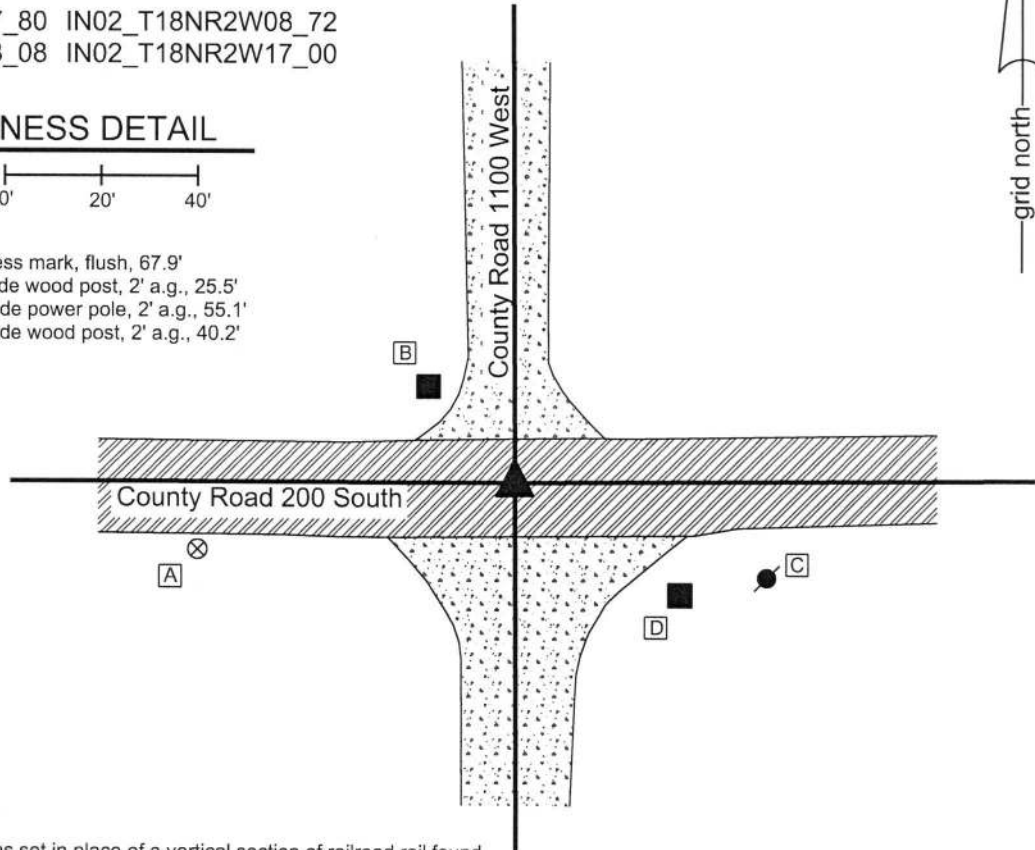
IN02\_T18NR2W18\_08 IN02\_T18NR2W17\_00

### CORNER WITNESS DETAIL

SCALE 1" = 40'



- A - Boone County witness mark, flush, 67.9'
- B - Mag nail set in S. side wood post, 2' a.g., 25.5'
- C - Mag nail set in N. side power pole, 2' a.g., 55.1'
- D - Mag nail set in N. side wood post, 2' a.g., 40.2'



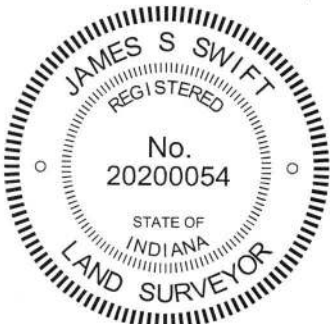
The Harrison Monument was set in place of a vertical section of railroad rail found.

No specific descriptions of this corner were found in the BCS Surveyor's Record beyond the original establishment of the corner as a wood post in 1820.

A BCS tie card dated August 23, 1967 shows the corner as "No stone." A BCS tie card dated May 19, 1994 shows the corner as a railroad spike. It is noted that the distance ties to corner posts in the northeast and northwest quadrants of the intersection do not match on the two tie cards.

This corner was excavated on October 9, 2018. Prior to excavation, a railroad spike was found at the surface of the road near the center of the intersection of the two roads. Prior to excavation, it appeared that the railroad spike was slightly southwest of the most probable location of the original corner, as determined by the centers of the roads in all four directions. The area of excavation was offset towards the northeast of the spike and was not centered on the spike for this reason.

Excavation revealed a vertical section railroad rail found at 8 inches deep 1.4 feet north and 1.7 feet east of the railroad spike. Further excavation of a rectangular area extending 2 feet south and 2 feet west of the railroad spike and 1.5 feet north and 1.5 feet east of the railroad rail revealed no further evidence of the corner. The bottom of the road bed was found at 10 inches deep. Excavation was performed to at least 12 inches deep. The vertical section of railroad rail is believed to have been set in association with the 1967 tie card, as it is known that setting railroad rails was the standard operating procedure of BCS field crews in the late 1960s and early 1970s. The variation in the positions of the spike and rail match the relative variations in the distance ties to the corner posts noted above. The rail was clearly in place before the spike was set and fits better with the evidence of the original corner in the form of the center of the roads. The rail was held as marking the corner. Both monuments were removed during excavation and a Harrison monument was set in the position of the rail.



*Kenneth E. Hedge*  
 Kenneth E. Hedge, County Surveyor

Jefferson Township

*James S. Swift*  
 James S. Swift, IN LS 20200054

Jackson Township

October 31, 2018

|                         |                         |
|-------------------------|-------------------------|
| Section 7<br>T18N, R2W  | Section 8<br>T18N, R2W  |
| Section 18<br>T18N, R2W | Section 17<br>T18N, R2W |

# SECTION CORNER RECORD

## BOONE COUNTY SURVEYOR'S OFFICE

SW 250-1000

State Plane grid coordinates NAD83 (2011):  
North: 1732067.45 East: 3072007.71 (U.S. survey feet)

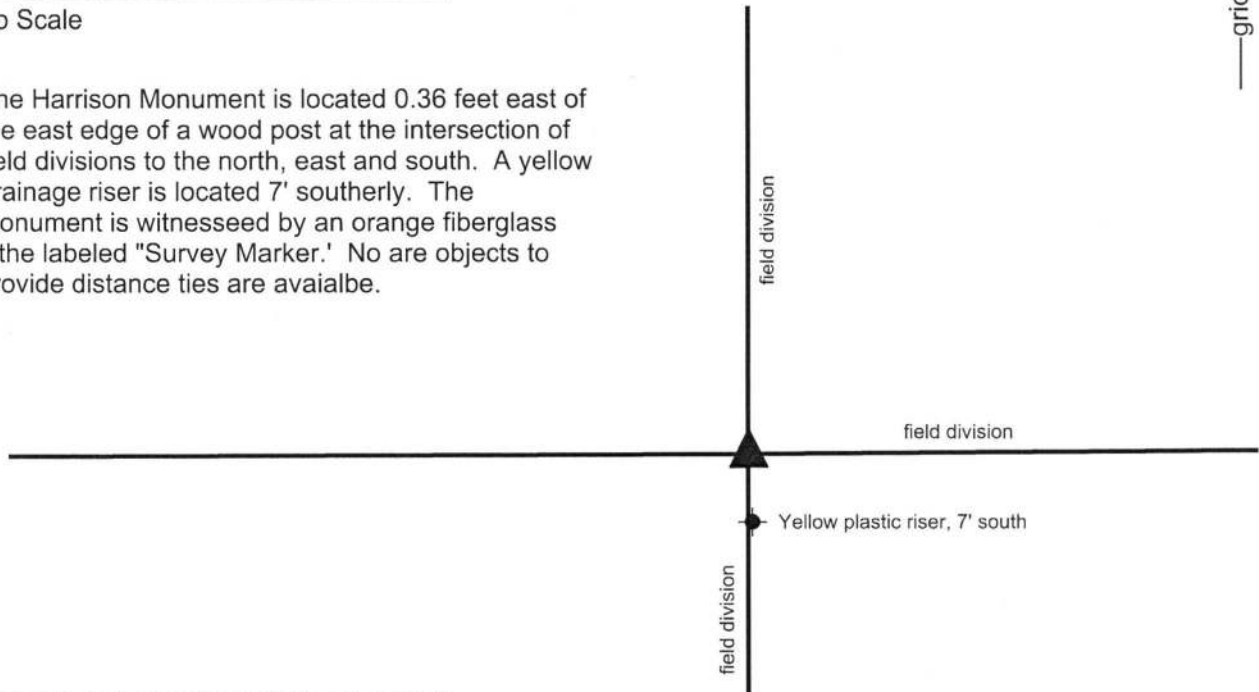
Type of monument: Harrison, 4" disk 'Section Corner'  
Depth: Four inches above adjacent ground

Indiana tie card references:  
IN02\_T18NR2W17\_44 IN02\_T18NR2W18\_36

### CORNER WITNESS DETAIL

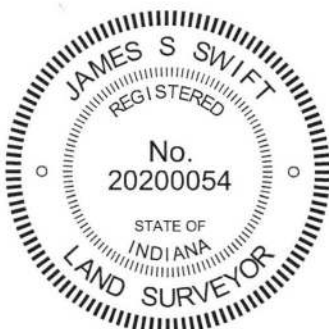
No Scale

The Harrison Monument is located 0.36 feet east of the east edge of a wood post at the intersection of field divisions to the north, east and south. A yellow drainage riser is located 7' southerly. The monument is witnessed by an orange fiberglass lathe labeled "Survey Marker." No are objects to provide distance ties are availalbe.



The Harrison monument was set over a stone found.

A BCS record of April 18-19, 1870 states, with respect to this corner, "Reest. Set a rock 21.15.6 +." No recent BCS tie cards were found referencing this corner. Excavation on October 3, 2018 revealed the stone described in the 1870 record adjacent to a wood corner post at the intersection of field divisions to the north, south and east. The post itself has fencing cut off toward to the north, south and east. The stone is situated against the east edge of the post, approximately 10 inches below grade. The stone has a flat top with a deeply etched "+" mark on the top center. The east and west sides of the stone are vertical. With the top 8 inches of the stone exposed, it measured 6 inches east-west. The north and south sides of the stone are sloping. The full north-south dimension of the stone was not exposed and measured but through use of a probe, the stone was determined to be at least 13 inches N-S. Probing along the east edge of the stone revealed that it was approximately 20 inches tall along the east edge. The stone was accepted as being the same monument described in the 1870 record. It appeared to be undisturbed. The stone was held as marking the corner. The top 6 inches of the stone were encased in concrete and a Harrison monument was set directly above the etched + mark on the top of the stone. This corner was originally established as a wood post in 1820.



*Kenneth E. Hedge*  
Kenneth E. Hedge, County Surveyor

*James S. Swift*  
James S. Swift, IN LS 20200054  
October 31, 2018

Jackson Township

|                         |                         |
|-------------------------|-------------------------|
| Section 17<br>T18N, R2W | Section 16<br>T18N, R2W |
|-------------------------|-------------------------|

# SECTION CORNER RECORD

# SW 250-1100

## BOONE COUNTY SURVEYOR'S OFFICE

State Plane grid coordinates NAD83 (2011):  
North: 1732045.29 East: 3066720.75 (U.S. survey feet)

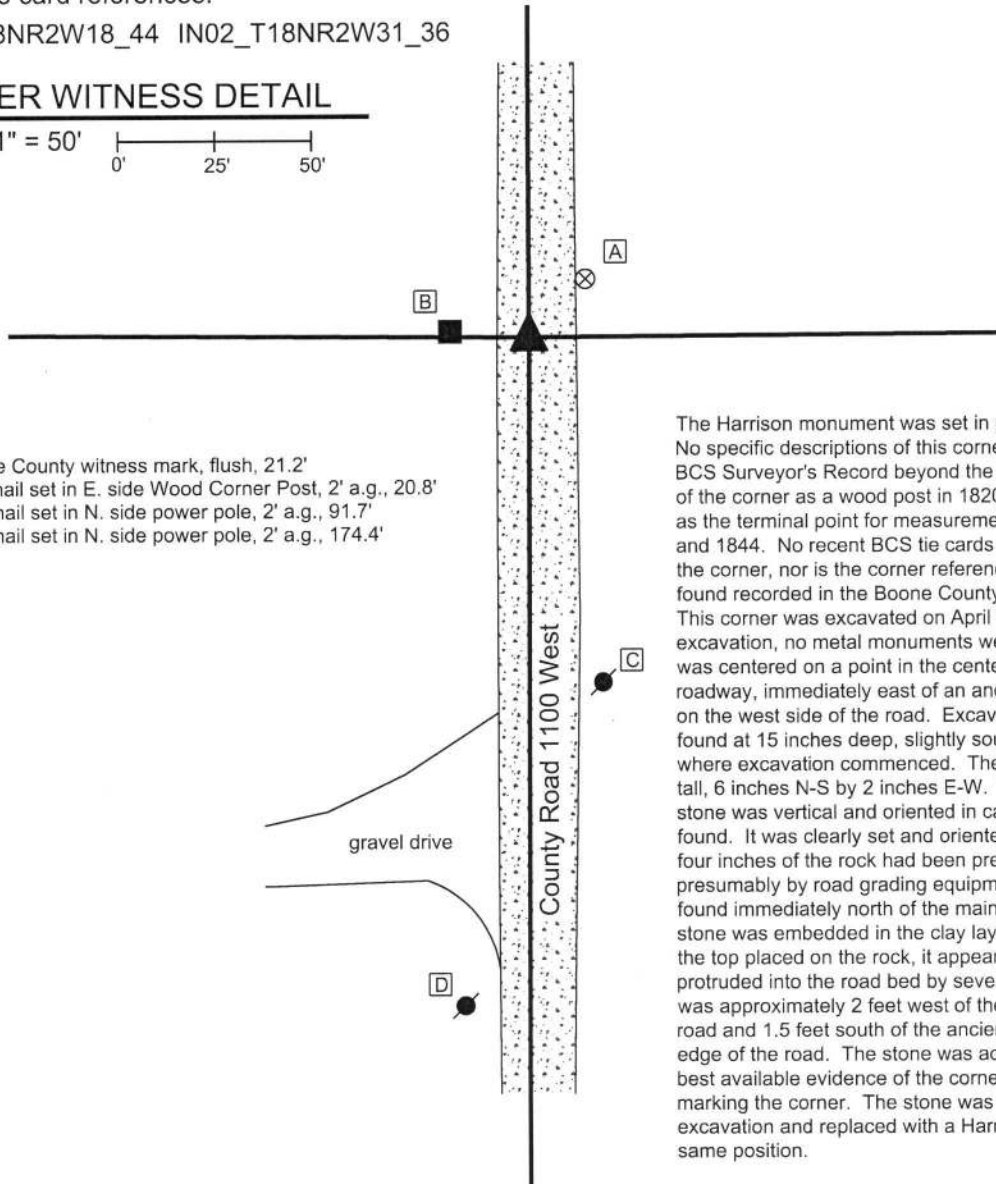
Type of monument: Harrison, 4" disk 'Section Corner'  
Depth: Six inches below adjacent gravel road surface

Indiana tie card references:  
IN02\_T18NR2W18\_44 IN02\_T18NR2W31\_36

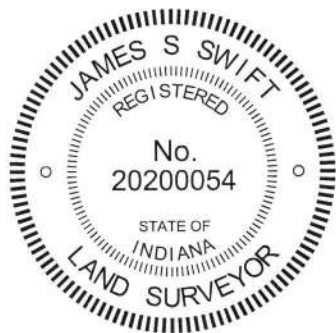
### CORNER WITNESS DETAIL

SCALE 1" = 50'  
0' 25' 50'

- A - Boone County witness mark, flush, 21.2'
- B - Mag nail set in E. side Wood Corner Post, 2' a.g., 20.8'
- C - Mag nail set in N. side power pole, 2' a.g., 91.7'
- D - Mag nail set in N. side power pole, 2' a.g., 174.4'



The Harrison monument was set in place of a stone found. No specific descriptions of this corner were found in the BCS Surveyor's Record beyond the original establishment of the corner as a wood post in 1820. The corner is noted as the terminal point for measurements in entries of 1834 and 1844. No recent BCS tie cards were found referencing the corner, nor is the corner referenced on any surveys found recorded in the Boone County Recorder's Office. This corner was excavated on April 12, 2019. Prior to excavation, no metal monuments were found. Excavation was centered on a point in the center of the north-south roadway, immediately east of an ancient wood corner post on the west side of the road. Excavation revealed a stone found at 15 inches deep, slightly southwest of the point where excavation commenced. The stone was 12 inches tall, 6 inches N-S by 2 inches E-W. Though not large, the stone was vertical and oriented in cardinal directions, as found. It was clearly set and oriented by humans. The top four inches of the rock had been previously broken off, presumably by road grading equipment. This portion was found immediately north of the main body of the rock. The stone was embedded in the clay layer below the road. With the top placed on the rock, it appeared that it would have protruded into the road bed by several inches. The stone was approximately 2 feet west of the center of the gravel road and 1.5 feet south of the ancient post on the west edge of the road. The stone was accepted as providing the best available evidence of the corner and was held as marking the corner. The stone was removed during excavation and replaced with a Harrison monument in the same position.



*Kenneth E. Hedge*  
Kenneth E. Hedge, County Surveyor

*James S. Swift*  
James S. Swift, IN LS 20200054  
April 30, 2019

Jackson Township

|                         |                         |
|-------------------------|-------------------------|
| Section 18<br>T18N, R2W | Section 17<br>T18N, R2W |
|-------------------------|-------------------------|



# SECTION CORNER RECORD

SW 300-1000

## BOONE COUNTY SURVEYOR'S OFFICE

State Plane grid coordinates NAD83 (2011):

North: 1729427.48 East: 3072005.57 (U.S. survey feet)

Type of monument: Harrison, 4" disk 'Section Corner'

Depth: One inch below adjacent road surface

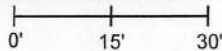
Indiana tie card references:

IN02\_T18NR2W16\_72 IN02\_T18NR2W17\_80

IN02\_T18NR2W20\_08 IN02\_T18NR2W21\_00

### CORNER WITNESS DETAIL

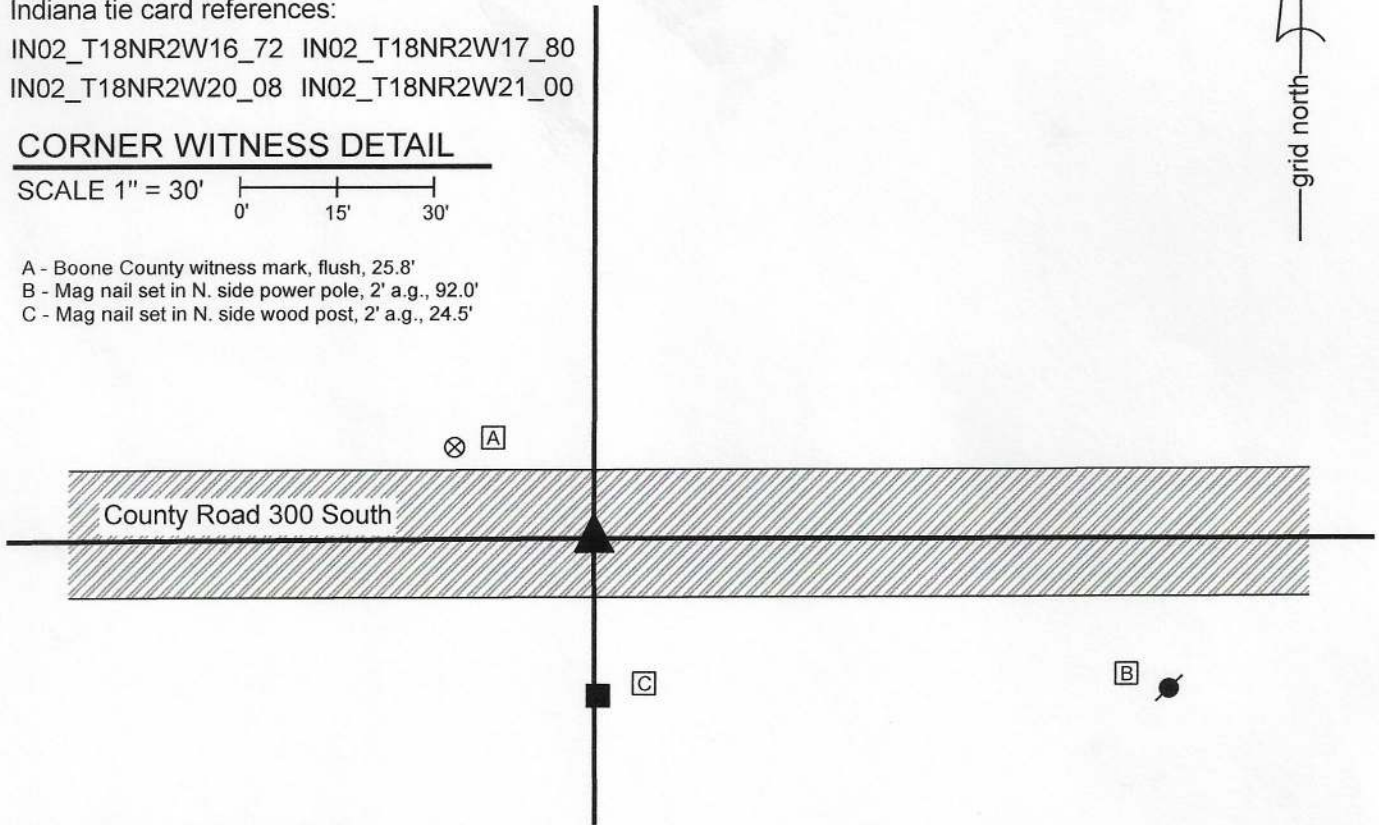
SCALE 1" = 30'



A - Boone County witness mark, flush, 25.8'

B - Mag nail set in N. side power pole, 2' a.g., 92.0'

C - Mag nail set in N. side wood post, 2' a.g., 24.5'

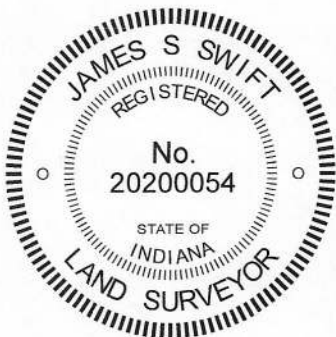


The Harrison monument was set over a stone found.

A BCS record dated April 18-19, 1870 states, with respect to this corner, "A rock that was set from stake where I run road." A BCS tie card dated August 25, 1967 states "No stone."

This corner was excavated on June 25, 2020. Prior to excavation, a mag nail with washer was found at 3 inches below the surface of the road. Excavation revealed a vertical section of railroad rail found at 12 inches deep, directly below the mag nail. A rotten, but generally intact 2 inch by 2 inch wood hub was found at 12 inches deep, slightly south and east of the rail. Further excavation revealed a stone found at 19 inches deep, below the wood hub. The stone was found to be 8 inches E-W by 8 inches N-S by 8 inches tall. The stone was embedded in the clay layer below the road bed, protruding 2 inches into the bottom of the road bed. No specific marks were observed on the stone but it was oriented such that it had a clear high point at the top, center. The stone, being oriented in cardinal directions with a distinct high point and embedded in the clay layer below the road, matched the characteristics of other stones found throughout county for which the record reference is "a rock (or stone) that was set." The stone was accepted as the best available evidence of the corner. The stone was left in place and a Harrison monument was set directly over the top, center and high point of the stone. The nail and rail, both removed during excavation, had been 1.1 foot north and 0.6 foot west of the top, center of the stone. Though the 1967 tie card states simply, "No stone", it is believed most likely that the vertical section of railroad rail was set in association with the creation of that tie card. The call of "no stone" is erroneous, as a stone was present, slightly south and east of the rail.

This corner was originally established as a wood post in 1820.



*Kenneth E. Hedge*  
 Kenneth E. Hedge, County Surveyor

*James S. Swift*  
 James S. Swift, IN LS 20200054  
 July 7, 2020

Jackson Township

|                         |                         |
|-------------------------|-------------------------|
| Section 17<br>T18N, R2W | Section 16<br>T18N, R2W |
| Section 20<br>T18N, R2W | Section 21<br>T18N, R2W |



# SECTION CORNER RECORD

SW 300-1050

## BOONE COUNTY SURVEYOR'S OFFICE

State Plane grid coordinates NAD83 (2011):

North: 1729409.24 East: 3069363.56 (U.S. survey feet)

Type of monument: Harrison, 4" disk 'Section Corner'

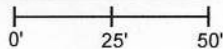
Depth: One inch below adjacent road surface

Indiana tie card references:

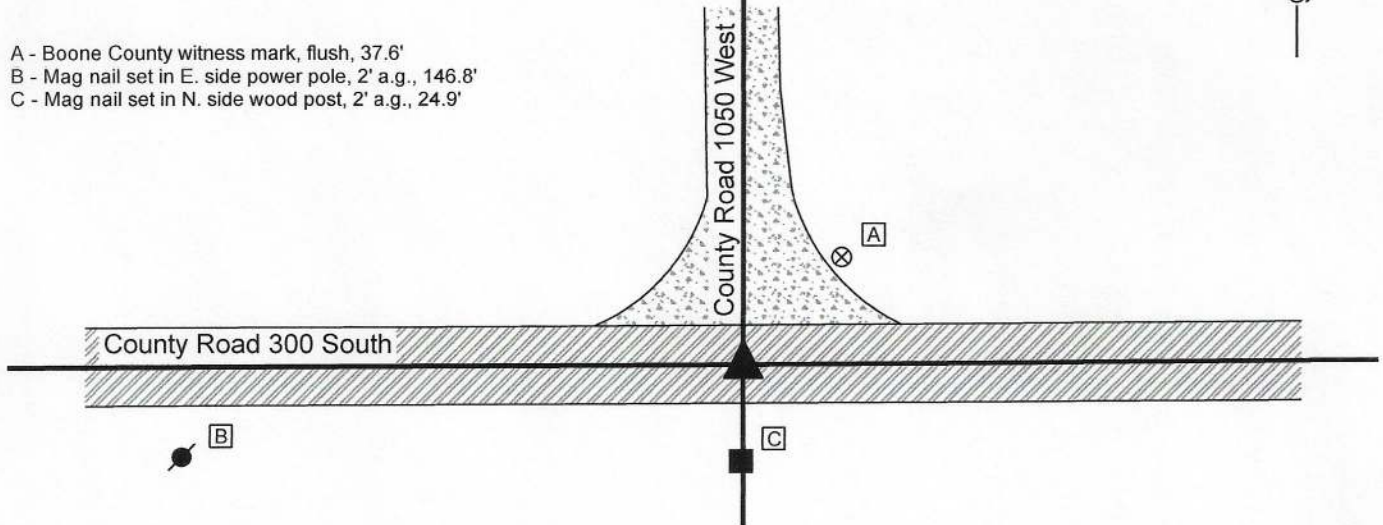
IN02\_T18NR2W17\_76 IN02\_T18NR2W20\_04

### CORNER WITNESS DETAIL

SCALE 1" = 50'



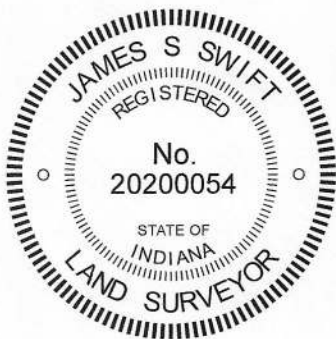
- A - Boone County witness mark, flush, 37.6'
- B - Mag nail set in E. side power pole, 2' a.g., 146.8'
- C - Mag nail set in N. side wood post, 2' a.g., 24.9'



The Harrison monument was set over a stone found.

A BCS record of August 24, 1888 states, with respect to this corner, "Reestablished from roots and stump of Oak. Set a rock 21,16x11 marked +. Also one under it at 14, 12 by 5 in. marked +." No recent BCS tie cards were found referencing this corner.

Excavation was performed at this corner on June 25, 2020. Prior to excavation, a mag nail was found at the surface of the road at the approximate center of the intersection of the two county roads. Another mag nail was found at the surface of the road 5.1 feet north thereof. Excavation revealed a stone found at 15 inches deep, north of the southerly mag nail and south of the other. The stone was found to measure 14 inches E-W by 9 inches N-S. 16 inches were exposed along the south edge of the stone. Both the north and south edges of the stone were flat and vertical. Probing indicated the presence of another stone found below at 19 inches below the top of the upper stone. The top stone was embedded in the clay layer below the road bed, protruding approximately 2 inches into the bottom of the road bed. No specific marks were observed on the upper stone, though it was observed that top, west edge of the stone appeared to have been previously broken off, presumably by road grading equipment. The upper stone measured uniformly 2 inches less than the dimensions recited in the 1888 record. This phenomenon has been observed at numerous other corners, though certainly not the majority of corners, throughout the county. It is believed that one of the rulers used by the Boone County Surveyors of the late 1800s was broken or faulty, resulting in a uniform mismeasurement of 2 inches. The two stones were accepted as being the same monuments as called in the 1888 record and were held as marking the corner. The stones were left in place and a Harrison monument was set directly over the top, center of the top stone. The Mag nails, both removed during excavation, had been 1.5 foot south and 0.1 foot west (southerly) and 3.6 feet north and 0.3 foot west (northerly), respectively, of the top, center of the stone. No additional evidence, including metal monuments, was found below the nails. This corner was originally established as a wood post in 1820.



*Kenneth E. Hedge*  
 Kenneth E. Hedge, County Surveyor

*James S. Swift*  
 James S. Swift, IN LS 20200054  
 July 7, 2020

Jackson Township

Section 17  
T18N, R2W

Section 20  
T18N, R2W

# SECTION CORNER RECORD

SW 300-1100

## BOONE COUNTY SURVEYOR'S OFFICE

State Plane grid coordinates NAD83 (2011):

North: 1729397.70 East: 3066722.34 (U.S. survey feet)

Type of monument: Harrison, 4" disk 'Section Corner'

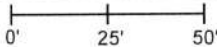
Depth: One inch below adjacent road surface

Indiana tie card references:

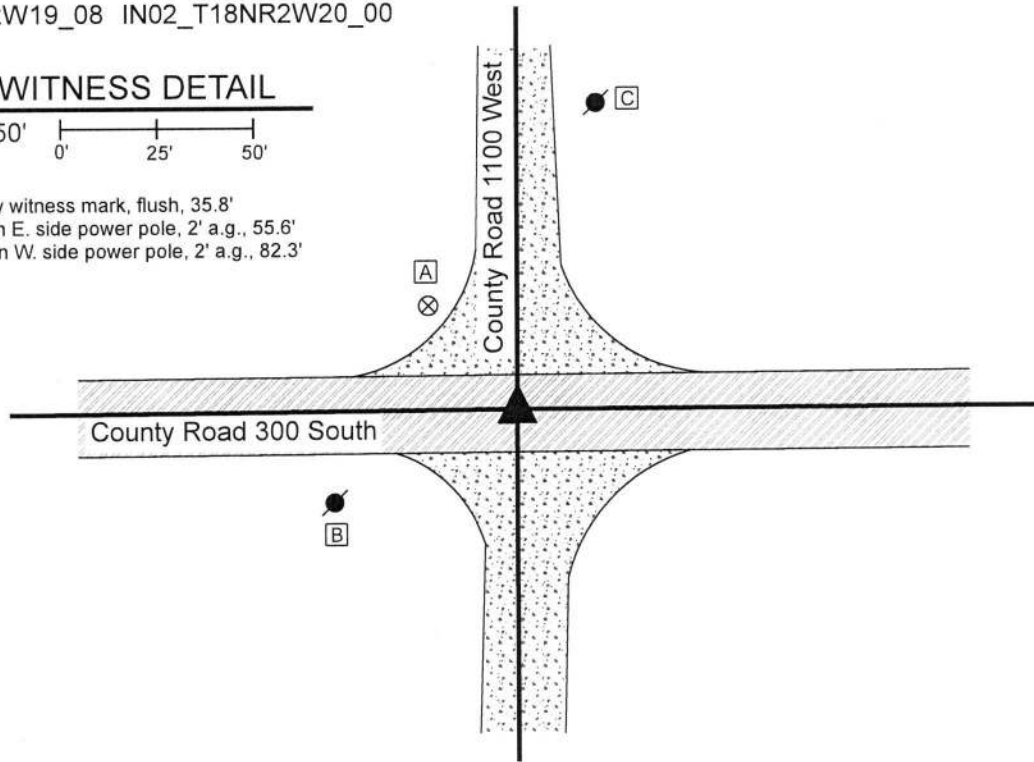
IN02\_T18NR2W18\_80 IN02\_T18NR2W17\_72

IN02\_T18NR2W19\_08 IN02\_T18NR2W20\_00

### CORNER WITNESS DETAIL

SCALE 1" = 50' 

- A - Boone County witness mark, flush, 35.8'
- B - Mag nail set in E. side power pole, 2' a.g., 55.6'
- C - Mag nail set in W. side power pole, 2' a.g., 82.3'



The Harrison monument was set over a stone found.

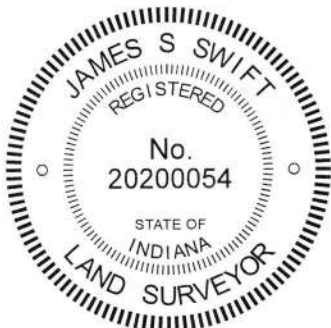
A BCS record of August 24, 1888 states, with respect to this corner, "Reestablished from stump of Oak bearing tree, made when same corner was reestablished April 8, 1867 (old stake had been in place). Set two rocks. One 14,7,3 +. Top one 15,14,7 + SE corner of brick school house bears N 52 1/4 W 99 links." A subsequent record of September 23, 1912 states "Relocated from roots of stump of Oak W. Two rocks, one 14x7x3 +. Top one 15x14x7 +." The 1912 record also calls for the witness to the corner of the brick school house.

A BCS tie card dated August 23, 1974 shows the corner, but does not state what monument was set or found.

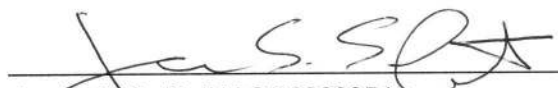
This corner was excavated on October 18, 2019. Prior to excavation, a railroad spike was found at 7 inches below grade. Excavation revealed a vertical section of railroad rail found at 13 inches deep, directly below the railroad spike. It is considered most likely that the railroad rail was set in association with the creation of the 1974 tie card.

Further excavation revealed a stone found at 24 inches deep, slightly northeast of the rail and spike. The stone is 14 inches N-S by 7 inches E-W by 15 inches tall, as measured on the east side. An etched "+" mark was distinctly visible on the top, center of the stone. Probing indicated that another stone is situated below the stone which was exposed. The stones were accepted as being the same monuments described in the 1888 and 1912 records and held as marking the corner. The stones were left in place and a Harrison monument was set directly over the etched mark on the top of the upper stone. The railroad spike and railroad rail, both removed during excavation, had been 0.6 foot south and 0.8 foot east of the mark on the stone.

This corner was originally established as a wood post in 1820.



  
 Kenneth E. Hedge, County Surveyor

  
 James S. Swift, IN LS 20200054  
 December 11, 2019

Jackson Township

|                         |                         |
|-------------------------|-------------------------|
| Section 18<br>T18N, R2W | Section 17<br>T18N, R2W |
| Section 19<br>T18N, R2W | Section 20<br>T18N, R2W |